

---

**Institute for Public Policy and Business Research  
Technical Report Series**

---

**Economic Trends for Northeast Kansas:**

*Atchison County*  
*Brown County*  
*Doniphan County*  
*Jackson County*  
*Jefferson County*  
*Nemaha County*

**Kansas Center for Community Economic Development**

**Institute for Public Policy and Business Research**  
The University of Kansas

November 1995

Report No. 29

---

**ECONOMIC TRENDS FOR NORTHEAST KANSAS**

*Atchison County*  
*Brown County*  
*Doniphan County*  
*Jackson County*  
*Jefferson County*  
*Nemaha County*

---

*Contributing Authors:*

Genna Ott                      Assistant Director, KCCED  
Alison Reiff-Martin      Graduate Research Assistant, KCCED

**Kansas Center for Community Economic Development  
Institute for Public Policy and Business Research**

Dr. Charles Krider, Co-Director, KCCED  
The University of Kansas

November 1995

## *Foreword*

The Kansas Center for Community Economic Development (KCCED) is a joint center of the Institute for Public Policy and Business Research at the University of Kansas and the Kansas Center for Rural Initiatives at Kansas State University. Its purpose is to enhance economic development efforts by bringing university expertise to rural Kansas.

This economic trend report was prepared by the KCCED at the University of Kansas for the Northeast Kansas Coalition for Regional Economic Development (NEKCRED). NEKCRED was formed in 1995 “to identify, coordinate and implement regional development efforts which will strengthen the economy of Northeast Kansas.” The Coalition includes Atchison, Brown, Doniphan, Jackson, Jefferson, and Nemaha counties. Looking at data trends is important because it provides a new perspective on the community and allows for a greater understanding of internal and external forces that influence a community.

KCCED is funded by a grant from the Economic Development Administration of the U.S. Department of Commerce. The statements, findings, and conclusions of this report are those of the authors and do not necessarily reflect the views of the U.S. Government, the University of Kansas, or any other individual or organization.

## TABLE OF CONTENTS

<b>INTRODUCTION</b> .....	1
<b>POPULATION</b> .....	1
Table 1 POPULATION TOTALS, GROWTH RATES, RANK & SHARE .....	4
Table 2 POPULATION OF TOP RANKING KANSAS COUNTIES .....	5
Table 3 POPULATION GROWTH RATES .....	6
Table 4 AGE GROUPS AS A PERCENTAGE OF TOTAL POPULATION .....	7
Figure 1 RATES OF POPULATION CHANGE .....	8
Map 1. PERCENT POPULATION CHANGE, 1980 TO 1990 .....	9
Map 2. PERCENT NET MIGRATION .....	10
<b>EMPLOYMENT AND EARNINGS</b> .....	11
Table 5 EMPLOYMENT GROWTH RATES .....	14
Table 6 POPULATION AND JOB GROWTH RATES .....	15
Table 7 AVERAGE WAGE PER JOB .....	16
Table 8 NUMBER OF FIRMS BY NUMBER OF EMPLOYEES .....	17
Table 9 PERCENTAGE DISTRIBUTION OF FIRMS BY NUMBER OF EMPLOYEES .....	18
Figure 2 JOB GROWTH V. POPULATION GROWTH .....	19
Figure 3 AVERAGE WAGE GROWTH RATES .....	20
Map 3. LABOR FORCE PARTICIPATION .....	21
Map 4. UNEMPLOYMENT RATES .....	22
Map 5. JOB GROWTH .....	23
<b>BUSINESS AND MANUFACTURING</b> .....	24
Table 10 EMPLOYMENT LEVELS BY INDUSTRY .....	26
Table 10a EMPLOYMENT LEVELS BY INDUSTRY GROWTH RATES .....	27
Table 11 NUMBER OF FIRMS BY INDUSTRY .....	28
Table 12 NUMBER OF MANUFACTURING BUSINESSES .....	29
Table 13 NUMBER OF RETAIL BUSINESSES .....	30
<b>AGRICULTURE</b> .....	31
Table 14 TOTAL VALUE OF FIELD CROPS .....	32
Table 15 TOTAL VALUE OF LIVESTOCK AND POULTRY .....	33
<b>INCOME</b> .....	34
Table 16 PER CAPITA PERSONAL INCOME .....	35
Table 17 TOTAL PERSONAL INCOME .....	36
Table 18 TRANSFER PAYMENTS AS A PERCENTAGE OF TOTAL PERSONAL INCOME .....	37
MAP 6. PER CAPITA INCOME .....	38
<b>EDUCATION</b> .....	39
Table 19 EDUCATIONAL ATTAINMENT OF PERSONS OVER 25 .....	40
Table 20 HIGH SCHOOL DROPOUTS .....	41
Table 21 HIGH SCHOOL GRADUATES .....	42
<b>INFRASTRUCTURE: TELEPHONE SERVICE</b> .....	43
<b>CONCLUSION</b> .....	43

**APPENDICES FOR *ECONOMIC TRENDS FOR NORTHEAST KANSAS***

**APPENDIX A**

Population Totals, Growth Rates, Rank & Share ..... A-1 to A-6

**APPENDIX B**

Population and Job Growth Rates ..... B-1 to B-6

**APPENDIX C**

Number of Firms by Number of Employees ..... C-1 to C-6

**APPENDIX D**

Commuting Patterns ..... D-1 to D-15

**APPENDIX E**

Employment Levels by Industry and Growth Rates ..... E-1 to E-6

**APPENDIX F**

Number of Firms by Industry ..... F-1 to F-6

**APPENDIX G**

Per Capita Personal Income ..... G-1 to G-6

**APPENDIX H**

Per Capita Personal Income - Figures ..... H-1 to H-6

**APPENDIX I**

Transfer Payments ..... I-1 to I-7

**APPENDIX J**

Telephone Exchange Service Areas ..... J-1 to J-9

## *Economic Trends for Northeast Kansas*

### **INTRODUCTION**

The use of data in economic development is important because it helps a community to evaluate its current situation across several different areas of economic and demographic performance. However, data by itself does not lead to a well-founded understanding of the community. Data must be analyzed and interpreted, considering the intuition of those within the community about what the overall trends really mean. In other words, data serves as the foundation for an analysis which concludes: 1) what is happening in the community compared with other regions over time, and 2) what potential impacts or consequences are suggested from the data.

This report will discuss key demographic and economic variables for a coalition of counties in Northeast Kansas called NEKCRED.<sup>1</sup> The report will include the following areas:

- Population,
- Employment and Earnings,
- Business and Manufacturing,
- Agriculture and Oil Production,
- Income and,
- Education.

### **POPULATION**

This section consists of population tables, figures and maps on: population totals from 1890 to 1994, population growth and change from 1930 to 1990, percent net migration from 1980 to 1990, and population rankings.

Population size and economic activity are closely related. Changes in population size are directly linked to employment opportunities, wage differentials between regions, and a community's overall economic conditions and quality of life. Generally, areas of population growth are also areas of economic growth while areas of population loss are area that have suffered previous economic decline and restructuring.

Communities with growing populations are generally better able to adapt to a changing economic environment due to the opportunities presented by new residents as additional consumers, taxpayers and suppliers of labor. Without population growth, communities face

---

<sup>1</sup>NEKCRED is the acronym for Northeast Kansas Coalition for Regional Economic Development. NEKCRED counties refer to Atchison, Brow, Doniphan, Jackson, Jefferson, and Nemaha counties.

problems of a tightening labor market, lack of new customers for businesses, a shrinking tax base, and an overall decline in economic activity.

Population characteristics are regarded as indicators of a region's economic conditions and economic potential. A minimum population is necessary to sustain a basic level of public and private services and facilities. Past and projected population change suggests community economic trends and can be compared with other counties and the statewide and national averages.

Migration is linked to job opportunities, demand, and wage differentials. Counties with low rates of job creation will face higher worker mobility due to a "push" factor (lack of opportunity) or a "pull" phenomenon by urban areas with higher wages, better job opportunities, and a perceived better quality of life. Other determinants of regional migration are age and education. Generally, there is a life cycle pattern to migration with the population aged 18-45 being the most mobile age group. The effect of education on migration is reflected by the movement of well-educated workers toward better job matches for themselves and their spouses and their attempts to raise their income levels by migrating to areas with employment opportunities.

### **Key Findings: Population**

- NEKCRED's population peaked in 1900 at 121,080; the current estimated population for 1994 was 74,309 (**Table 1**). From 1991-94, population has remained steady with an annual average decline of 0.3 percent or less. [*For individual county population totals, see Appendix A.*]
- NEKCRED's population did not grow as much as some of the surrounding counties in Kansas. Douglas, Johnson, Leavenworth and Shawnee Counties all improved their population ranks while each NEKCRED county dropped in rank (**Table 2**).
- The counties surrounding NEKCRED in Kansas, Nebraska, and Missouri experienced more population growth from 1960-1994 than the NEKCRED counties, which declined or showed only a slight increase (**Table 3**). **Figure 1** illustrates that population growth for NEKCRED has lagged behind its neighboring counties and Kansas as a whole from 1960 to 1994.
- The decline in population for NEKCRED from 1980-1990 when compared with increases elsewhere suggests that the area may lack competitiveness with other regions of Kansas (**Map 1**).
- The majority of the population in the NEKCRED counties is comprised of people aged 25-64 years (**Table 2**). This trend suggests that the NEKCRED counties have a strong work force available.

- The NEKCRED counties as a whole have experienced out migration during the 1980s, indicating that the area lags behind other parts of the state, particularly Douglas and Johnson Counties, in job opportunities and wages (**Map 2**). Given the continued decline in population for the NEKCRED counties, the area could be facing difficulty in maintaining the level of public and private services if the trend is not reversed.



**Table 1**  
**POPULATION TOTALS, GROWTH RATES, RANK & SHARE**  
**ACTUAL 1890-1990, ESTIMATES 1991-1994**  
**NEKCREDCOUNTIES**

<u>Year</u>	<b>NEKCREDC</b>		<b>Kansas</b>		<b>NEKCREDC</b>	
	<u>Population Total</u>	<u>Growth Rate</u>	<u>Population Total</u>	<u>Growth Rate</u>	<u>Share (%)</u>	<u>Growth Index +</u>
1890	111,107		1,427,096		7.79	
1900	121,080	9.0	1,470,495	3.0	8.23	2.95
1910	115,602	-4.5	1,690,949	15.0	6.84	-0.30
1920	106,530	-7.8	1,769,257	4.6	6.02	-1.69
1930	105,808	-0.7	1,880,999	6.3	5.63	-0.11
1940	95,414	-9.8	1,801,028	-4.3	5.30	2.31
1950	83,169	-12.8	1,905,299	5.8	4.37	-2.22
1960	78,159	-6.0	2,178,611	14.3	3.59	-0.42
1970	74,069	-5.2	2,249,071	3.2	3.29	-1.62
1980	77,682	4.9	2,364,236	5.1	3.29	0.95
1990	74,070	-4.6	2,477,588	4.8	2.99	-0.97
1991*	74,045	0.0	2,491,659	0.6	2.97	-0.06
1992*	74,062	0.0	2,517,791	1.0	2.94	0.02
1993*	74,275	0.3	2,535,097	0.7	2.93	0.42
1994*	74,309	0.0	2,554,047	0.7	2.91	0.06

+ NEKCREDC Coalition Growth Rate divided by Kansas Growth Rate (=1) when Coalition and state growth rates are equal.  
\* Estimate

Source: Population Totals: U.S. Bureau of the Census, Fifteenth Census of the United States, 1930 Vol. 1; "Census of Population, 1960: Number of Inhabitants; 1980 Census of Population", Vol. 1, Chapter A, Part 18; "1990 Decennial Census", mimeographed sheet; Population Projection: Floerchinger, Teresa D., "Kansas Population Projections 1990-2030", Kansas Division of the Budget, September 1992; Population Estimates, and Population Distribution Branches, U.S. Bureau of the Census; 1994 Population Estimates for Counties, Population Estimates Branch, U.S. Bureau of the Census.

**Table 2**  
**Population of Top Ranking Kansas Counties**  
(in Thousands)

<u>Rank</u>	<u>1940</u>	<u>Population</u>	<u>Rank</u>	<u>1990</u>	<u>Population</u>
3	Shawnee	91	2	Johnson	355
7	Leavenworth	41	4	Shawnee	161
9	Johnson	33	5	Douglas	82
16	Douglas	25	7	Leavenworth	64
20	Atchison	22	30	Atchison	17
23	Marshall	21	31	Pottawatomie	16
32	Brown	17	32	Jefferson	16
36	Nemaha	17	37	Marshall	12
41	Pottawatomie	14	38	Jackson	12
43	Jackson	13	39	Brown	11
46	Doniphan	13	42	Nemaha	10
47	Jefferson	13	50	Doniphan	8
67	Wabaunsee	9	60	Wabaunsee	7

Source: University of Kansas, Institute for Public Policy and Business Research, "Kansas Statistical Abstract", 1993-1994, "Population of Kansas Counties, 1890-1980; U.S. Bureau of the Census, "Fifteenth Census of the United States, 1930, Vol. 1"; "Census of Population, 1960: Number of Inhabitants"; "1980 Census of Population, Vol. 1, Chapter A, Part 18"; "1990 Decennial Census". Population Projections, 1990-2030, "Kansas Division of the Budget, September, 1992. Calculations: IPPBR.

**Table 3**  
**POPULATION GROWTH RATES: 1960-1994**  
**NEKCRED, NEIGHBORING COUNTIES, KANSAS, AND UNITED STATES**

	<u>60-70</u>	<u>70-80</u>	<u>80-90</u>	<u>90-94</u>
Atchison	-8.3%	-4.0%	-8.0%	-1.1%
Brown	-11.7	2.3	-6.9	-0.9
Doniphan	-4.9	1.8	-12.2	-6.3
Jackson	0.3	12.6	-1.0	0.9
Jefferson	6.2	27.3	4.6	5.8
Nemaha	-8.3	-5.2	-6.8	0.0
NEKCRED	-5.2	4.9	-4.6	0.3
Douglas	32.5	16.8	20.9	7.6
Johnson	53.0	22.8	31.4	10.7
Leavenworth	9.9	2.8	17.4	7.0
Shawnee	9.9	-0.3	3.9	2.6
Marshall	-15.8	-2.7	-8.5	-3.7
Pottawatomie	-1.7	25.8	9.1	8.0
Waubaussee	-3.8	7.3	-3.8	0.5
Andrew (MO)	7.7	17.4	4.7	2.7
Buchanan (MO)	-4.0	1.1	-5.5	-0.1
Holt (MO)	-15.6	3.4	-12.3	-5.9
Platte (MO)	37.4	44.4	24.9	12.0
Pawnee (NE)	-16.5	-12.0	-15.7	-0.5
Richardson (NE)	-11.7	-7.8	-12.2	-1.9
Total Neighboring Counties	19.3	11.9	15.8	6.9
Kansas	3.2	5.1	4.8	3.1
United States	13.4	11.4	9.8	4.7

Source: U.S. Bureau of the Census, "Census of Population, 1960: Number of Inhabitants", Final Report: "1980 Census of Population", PC90-1-A-18; "1990 Decennial Census". Population Projections: Floerchinger, Teresa D., "Kansas Population Projections, 1990-2030, "Kansas Division of the Budget, September, 1992. Calculations: IPPBR.

**Table 4**  
**AGE GROUPS AS A PERCENTAGE OF TOTAL POPULATION**  
**NEKCRED COUNTIES AND KANSAS: 1990**

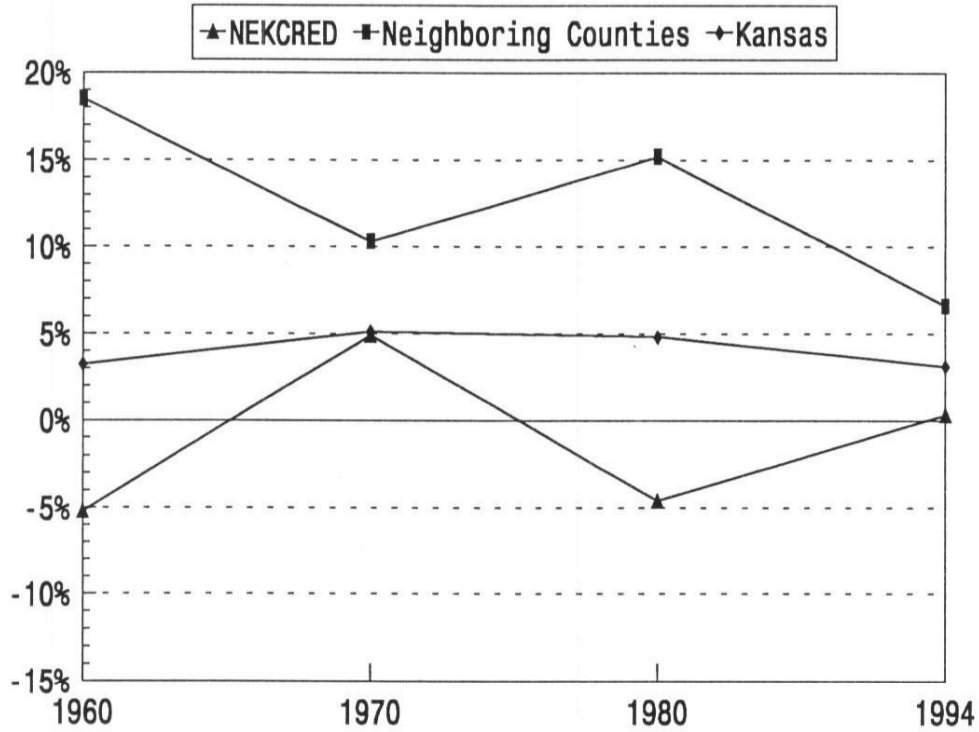
---

	<u>1-19</u>	<u>20-25</u>	<u>25-44</u>	<u>45-64</u>	<u>65+</u>
Atchison	31.4%	6.9%	26.1%	18.7%	16.9%
Brown	29.6	4.6	25.8	18.3	21.7
Doniphan	30.6	5.9	26.8	18.7	18.0
Jackson	31.3	4.9	27.8	19.8	16.2
Jefferson	29.7	4.9	30.1	20.6	14.7
Nemaha	30.7	4.6	25.7	18.5	20.5
NEKCRED	30.6	5.4	27.2	19.2	17.6
Kansas	29.7	7.3	31.3	17.9	13.8

---

Source: U.S. Bureau of the Census, "1990 Census of Population and Housing," (1990 CPH-1-18). Kansas County Profile.  
 Calculations: KCCED/IPPBR

**Figure 1**  
**RATES OF POPULATION CHANGE: 1960-1994**  
**NEKCRED COUNTIES, NEIGHBORING COUNTIES, AND KANSAS**



Source: U.S. Bureau of the Census, "Fifteenth Census of the United States: 1930, Vol. 1;" "Census of Population, 1960: Number of Inhabitants, Final Report;" "1980 Census of Population, Vol. 1, Chapter A, Part 18, "1990 Census of Population", STF1-A Population Projections: Floerchinger, Teresa D., "Kansas Populations Projections, 1990-2030, "Kansas Division of the Budget, September, 1992. Calculations: IPPBR.





## EMPLOYMENT AND EARNINGS

The following tables, figures or maps included in this section are: employment growth rates, population and job growth rates, number of firms by number of employees, average wage per job, and average wage growth rates.

Employment levels are an important measure of a community's economic vitality. The size of the labor force shows the number of people who are either working or willing to work. The size of the labor force is influenced not only by population but also by the perception that suitable job opportunities exist. Diverse, healthy economies tend to offer the widest variety of job opportunities and attract a large number of job-seekers, which increases the size of the labor force. The level of unemployment reflects the amount of economic activity within an area and how well the local market can match the supply and demand for labor.

Job creation rates (net change in average annual employment) reflect the growth in employment levels and the range of employment opportunities. As some jobs are lost in a community due to changing economic circumstances, new jobs may replace them. Net job creation reflects the net gain or loss in jobs over a given period. Wage rates are another indicator of the attractiveness of a particular economy. Attractive wages will attract a larger number of job seekers.

### Key Findings: Employment

- Average annual employment for the NEKCRED counties has increased 5.9 percent in recent years from 33,574 in 1989 to 36,676 in 1993 (**Table 5**). Within NEKCRED, Jefferson County experienced the largest increase in employment with an increase of 652 people employed, or 12.2 percent, from 1989 to 1993.
- The counties surrounding NEKCRED experienced a 9.5 percent increase in average annual employment from 1989 to 1993, helped along by strong growth in Douglas and Johnson counties (**Table 5**). Johnson County experienced the largest increase in employment with an increase of 29,966 people employed, or 15.4 percent, from 1989 to 1993.
- Since 1984, the job growth rates for the NEKCRED counties have increased faster than the population growth rates, suggesting that the job opportunities are increasing (**Table 6** and **Figure 2**).
- From 1992 to 1994, the job growth rate (-4.50 percent) for Brown County decreased faster than the population growth rate (-0.42 percent) (**Appendix B, Table 6b**). Nemaha County also experienced a job growth rate decrease of 12 percent from 1992 to 1994 while the population growth rate in that same time increased 0.3 percent (**Appendix B, Table 6f**). [*For further information on the population and job growth rates for each*



*NEKCRED county, see Appendix B.]*

- Since 1980, the NEKCRED counties' average wage per job increased 64.3 percent from \$9,978 in 1980 to \$16,393 in 1993 (**Table 7** and **Figure 3**). NEKCRED's average wage per job has lagged behind the Neighboring Kansas Counties' and the State of Kansas' average wage. Since wage rates are an indicator of the attractiveness of a particular economy, these lower wage rates suggest that the region is vulnerable to movement to other parts of the state with higher wages.
- Since 1980, the NEKCRED counties have experienced an increase (12.0 percent) in the total number of firms located within the area suggesting that firms are being created or attracted to the area (**Table 8**). However, NEKCRED's growth has not been as great as the state for a whole, which has grown 22.9 percent. [*See Appendix C, Tables 8a-8f for individual county data.*]
- Kansas is composed of many small firms with almost 88 percent of its firms in 1992 employing less than 19 employees (**Table 9**). Small firms are also important to NEKCRED with almost 92 percent of its firms employing less than 19. The importance of small firms to the economy indicates a need for strategies that nurture new business development and assist existing small businesses. [*See Appendix D, Tables 9a-9f for data on individual counties.*]
- The labor force participation rates for the NEKCRED counties in 1990 range from a low of 59.3 for both Brown and Doniphan Counties to a high of 66.0 for Jefferson County (**Map 3**).<sup>2</sup> As a coalition, the participation rate (54.1) is slightly below the state and national averages of 65.4 percent for Kansas and 64.4 percent for the U.S. (1990 Census). This lower participation rate indicates that there is a greater potential for labor supply than would be suggested by the unemployment rate alone.
- In 1994, the unemployment rates for the NEKCRED counties were lower than the southeast Kansas region but higher than other regions in Kansas, suggesting that the region has a greater supply of workers if additional jobs are generated (**Map 4**).
- NEKCRED as a whole experienced an increase in job growth from 1989 to 1994 (**Map 5**).<sup>3</sup> Jackson County and Jefferson County experienced the largest increase in job growth,

---

<sup>2</sup>The labor force participation rate is the percentage of population 16 and over that is in the labor force. A lower participation rate reflects slower job growth. If jobs are not available than the individuals who want to work may drop out of the labor force rather than remain unemployed.

<sup>3</sup>Job growth for this map is based on individual's place of residence. Consequently, job growth does not necessarily reflect the number of jobs created in the county but rather the growth in the number of people in the county with jobs.

25.7 percent and 25.3 percent, respectively, from 1989 to 1994. This suggests that this region as a whole may see an increase in population due to the large increase in job growth.

- Commuting patterns of residents within the counties illustrate employment opportunities in and out of the county. **Appendix D** contains maps of the commuting outflow and inflow patterns for each NEKCRED county, based on 1990 Census data. These patterns show that the NEKCRED region is dependent upon the nearby metropolitan areas for employment with a large number of commuters out of Atchison and Doniphan counties to the Kansas City metropolitan region and a large number of commuters out of Jefferson and Jackson counties to the Topeka metropolitan region. [*See Appendix D for further analysis of commuting patterns.*]

**Table 5**  
**EMPLOYMENT GROWTH RATES: 1983-1993**  
**NEKCRED, NEIGHBORING COUNTIES, AND KANSAS**

	Avg. Annual Employment			% Empl. Growth			
	1983	1986	1989	1993	83-86	86-89	89-93
Atchison	7,907	7,964	8,361	8,827	0.7%	5.0%	5.6%
Brown	5,762	5,547	5,975	5,967	-3.7	7.7	-0.1
Doniphan	3,702	3,759	3,807	4,023	1.5	1.3	5.7
Jackson	4,710	5,037	4,947	5,380	6.9	-1.8	8.8
Jefferson	5,145	5,297	5,351	6,003	3.0	1.0	12.2
Nemaha	6,102	5,970	6,184	6,476	-2.2	3.6	4.7
NEKCRED	33,328	33,574	34,625	36,676	0.7	3.1	5.9
Douglas	33,943	37,748	43,418	49,018	11.2	15.0	12.9
Johnson	162,943	200,930	231,836	261,802	23.3	15.4	12.9
Leavenworth	23,753	26,184	28,117	29,971	10.2	7.4	6.6
Shawnee	94,907	100,870	108,884	111,107	6.3	7.9	2.0
Marshall	6,382	6,289	6,434	6,780	-1.5	2.3	5.4
Pottawatomie	7,175	8,238	8,448	9,524	14.8	2.5	12.7
Waubaussee	2,524	2,884	2,586	2,517	14.3	-10.3	-2.7
Neighboring Kansas Counties	331,627	383,143	429,723	470,719	15.5	12.2	9.5
Kansas	1,326,028	1,391,755	1,449,774	1,529,393	5.0	4.2	5.5
United States	114,146.5	126,616.4	136,413.8	139,289.1	10.9	7.7	2.1

(United States amounts in 000s)

*Note:* Employment data are based on an individual's place of work.

Source: U.S. Department of Commerce, Bureau of Economic Analysis, Kansas County Profile, KCCED/IPPBR, University of Kansas

**Table 6**  
**POPULATION AND JOB GROWTH RATES**  
**NEKRED COUNTIES**

---

	<u>80-82</u>	<u>82-84</u>	<u>84-86</u>	<u>86-88</u>	<u>88-90</u>	<u>90-92</u>	<u>92-94</u>
Job Growth	-4.63%	-8.13%	2.28%	3.49%	2.77%	3.38%	4.50%
Population Growth	0.28%	-0.51%	-0.39%	0.65%	-4.67%	-0.01%	0.33%

---

*Note:* Employment data are base on an individual's place of residence.

Source: Kansas Statistical Abstract 1992-1993, IPPBR, University of Kansas; Kansas Department of Human Resources; and, 1994 Population Estimates Branch, U.S. Bureau of the Census.

**Table 7**  
**AVERAGE WAGE PER JOB**  
**NEKCRED, NEIGHBORING COUNTIES, AND KANSAS**  
**1980, 1985, 1990, 1993**  
**(IN DOLLARS)**

	<u>1980</u>	<u>1985</u>	<u>1990</u>	<u>1993</u>	<u>80-85</u>	<u>85-90</u>	<u>90-93</u>
Atchison	11,802	14,553	16,553	18,222	23.3%	13.7%	10.1%
Brown	9,164	12,403	14,580	15,892	35.3	17.6	9.0
Doniphan	10,742	13,923	16,895	18,556	29.6	21.3	9.8
Jackson	9,356	12,360	13,338	14,243	32.1	7.9	6.8
Jefferson	9,940	12,688	14,505	15,897	27.6	14.3	9.6
Nemaha	8,861	11,588	14,335	15,547	30.8	23.7	8.5
NEKCRED	9,978	12,919	15,034	16,393	29.5	16.4	9.0
Douglas	11,022	14,338	16,600	18,098	30.1	15.8	9.0
Johnson	13,846	18,955	22,855	26,008	36.9	20.6	13.8
Leavenworth	13,135	18,951	22,068	25,663	44.3	16.4	16.3
Shawnee	13,483	18,310	21,344	23,559	35.8	16.6	10.4
Marshall	10,674	14,215	16,725	17,731	33.2	17.7	6.0
Pottawatomie	11,129	14,070	16,194	17,527	26.4	15.1	8.2
Wabaunsee	7,739	10,856	12,792	13,777	40.3	17.8	7.7
Neigh. Kansas Counties	11,575	15,671	18,368	20,338	35.4	17.2	10.7
Kansas	12,697	16,906	19,794	21,936	33.1	17.1	10.8

*Note:* The employment estimates used to compute the average are a job count, not a person count.

Source: U.S. Bureau of Economic Analysis, Regional Information System, January 1995, Table CA34, Line Code 030.  
 Kansas County Profile, KCCED/IPPBR, University of Kansas.

**Table 8**  
**NUMBER OF FIRMS BY NUMBER OF EMPLOYEES**  
**NEKCRED AND KANSAS: 1980, 1992**

Employees	NEKCRED			Kansas		
	1980	1985	1992	1980	1985	1992
0-19	1,397	1,531	1569	48,394	58,347	59,240
20-99	113	98	117	5,689	6,234	7,171
100-499	16	17	23	842	840	1,102
500+	1	1	1	96	89	117
<b>Total</b>	<b>1,527</b>	<b>1,647</b>	<b>1,710</b>	<b>55,021</b>	<b>65,510</b>	<b>67,630</b>

*Note:* Employment data are based on an individual's place of work.

Source: U.S. Department of Commerce, Bureau of Economic Analysis. Calculations: KCCED/IPPBR.

**Table 9**  
**PERCENTAGE DISTRIBUTION OF FIRMS BY NUMBER OF EMPLOYEES**  
**NEKCRED AND KANSAS: 1980, 1985, 1992**

---

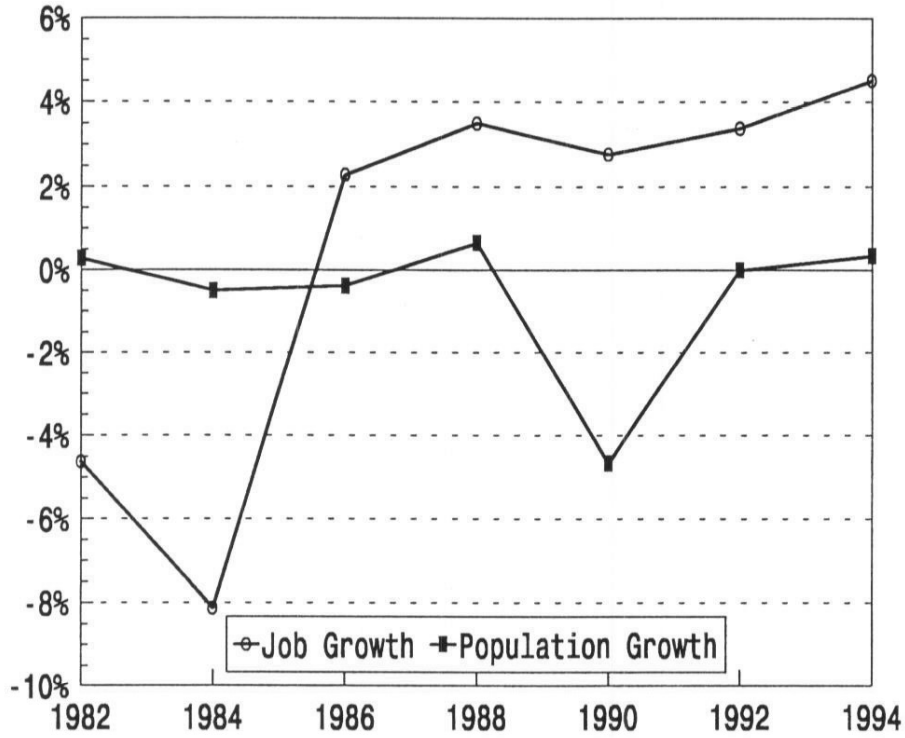
Employees	NEKCRED			Kansas		
	1980	1985	1992	1980	1985	1992
0-19	91.5%	93.0%	91.8%	88.0%	89.1%	87.6%
20-99	7.4	6.0	6.8	10.3	9.5	10.6
100-499	1.0	1.0	1.3	1.5	1.3	1.6
500+	0.1	0.1	0.1	0.2	0.1	0.2

---

*Note:* Employment data are based on an individual's place of work.

Source: U.S. Department of Commerce, Bureau of Economic Analysis. Calculations: KCCED/IPPBR

**Figure 2**  
**JOB GROWTH V. POPULATION GROWTH: 1982-1994**  
**NEKCRED COUNTIES**



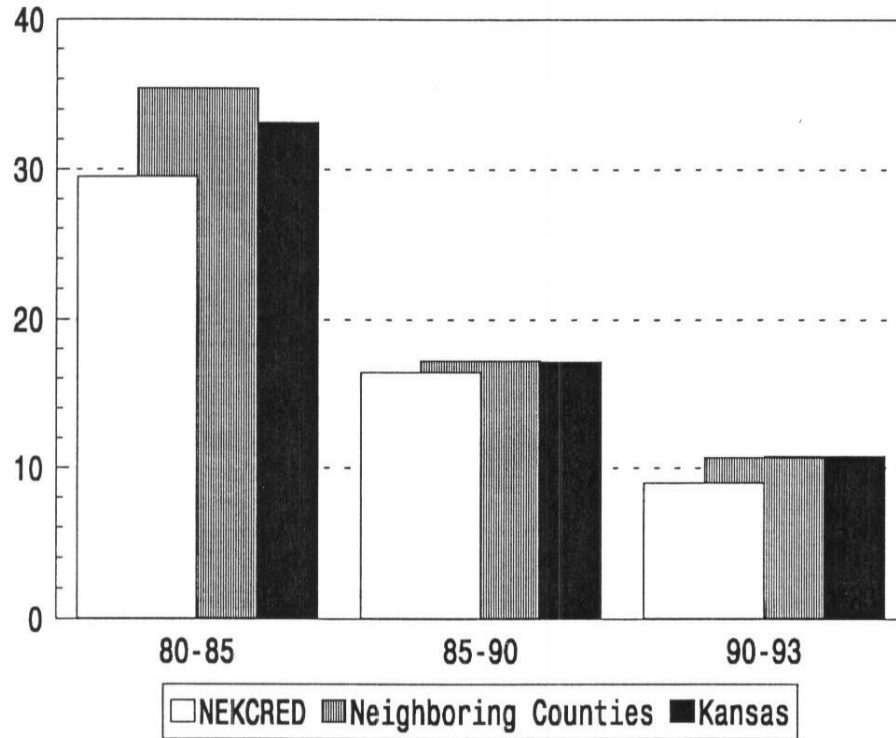
*Note:* Employment data are based on an individual's place of work.

Source: Bureau of Economic Analysis, Regional Economic Information System, Table CA5, Kansas County Profile, KCCED/IPPBR, University of Kansas.



**Figure 3**  
**AVERAGE WAGE GROWTH RATES**  
**NEKCRED COUNTIES, NEIGHBORING COUNTIES, AND KANSAS**

---

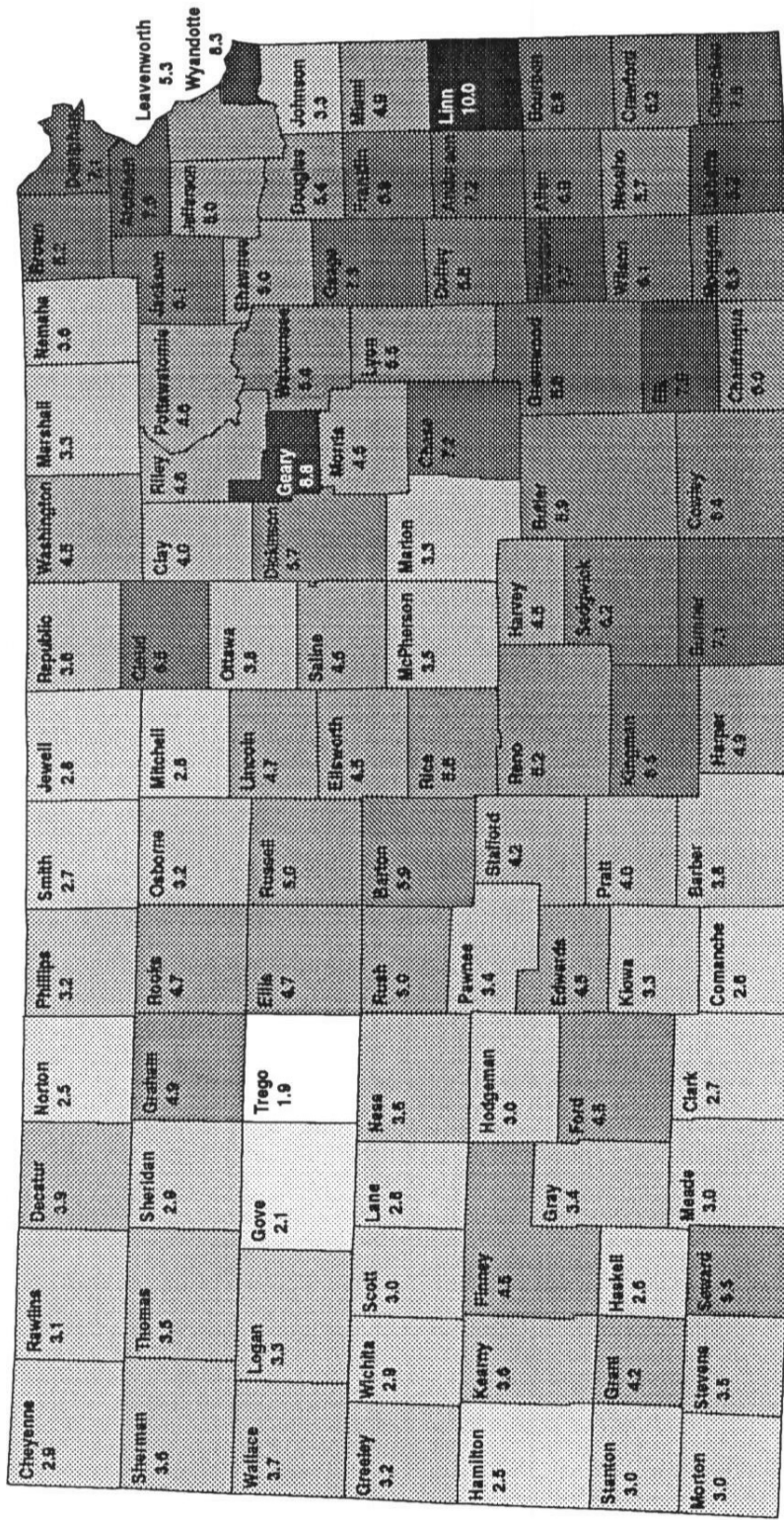


*Note:* The employment estimates used to compute the average are a job count, not a person count.

Source: U.S. Bureau of Economic Analysis, Regional Information System, January 1995, Table CA34, Line Code 030. Kansas County Profile, KCCED/IPPBR, University of Kansas.



Map 4. Unemployment Rates: 1994



Note: Employment data are based on an individual's place of residence.  
Source: Kansas Labor Force Estimates Annual Average 1994, Kansas Department of Human Resources.



## BUSINESS AND MANUFACTURING

This section includes tables and figures on: employment levels by industry, change in employment, manufacturing businesses and their growth rates, retail business and its growth rates, and retail sales growth.

Growth in businesses and manufacturing shows the economic vitality of a county. If the county is perceived to be economically strong, it can induce existing businesses to remain and attract additional new businesses.

### Key Findings: Business and Manufacturing

- The United States is experiencing a shift from a manufacturing-based economy to a more service based economy. The NEKCRED counties' economies are shifting, but they are still dependent upon manufacturing, construction, and government/governmental service sectors, which comprise more than half of the NEKCRED Counties' non-farm employment (**Table 10**). Manufacturing accounted for 11.9 percent of the NEKCRED Counties' total employment in 1993. The NEKCRED Counties are less dependent on manufacturing than the State of Kansas, with manufacturing accounting for 12.3 percent of total employment in the State of Kansas.
- From 1989 to 1993, employment growth occurred in the following industry sectors for the NEKCRED region (in order of greatest increase in number of jobs): services, government services, manufacturing, retail, construction, and transportation (**Table 10**). Farm employment declined during the same time period. [*See Appendix E for employment levels by industry for the individual NEKCRED counties.*]
- The total number of firms located in the NEKCRED counties increased 3.8 percent from 1985 to 1992, which was slightly higher than the 3.2 percent increase for Kansas during the same time period (**Table 11**). The NEKCRED region experienced increased in the number of firms for all the industry sectors but three (retail, wholesale, and unclassified). The greatest increase in the number of firms was in the service sector with 118 new firms in 1992 compared to 1985. [*For further information on the number of firms by industry for the individual NEKCRED counties, see Appendix F.*]
- The number of manufacturing business in the NEKCRED counties increased 13.3 percent from 1988 from 83 businesses to 94 businesses in 1992 (**Table 12**). Growth in manufacturing businesses was stronger for the neighboring counties with an increase of 168 businesses, or 17.7 percent, from 1988 to 1992.
- This increase in the number of manufacturing businesses for the NEKCRED region (**Table 12**) is consistent with the increase in manufacturing employment (**Table 10**), suggesting

that the region has been able to attract firms for its employment. However, the region has not done as well as its neighboring counties.

- The number of retail businesses in the NEKCRED counties has steadily increased (2.9 percent) from 1988 to 1992 (**Table 13**). However, the neighboring counties have experienced a greater increase of 8.9 percent for that same time period. The number of retail businesses located in the NEKCRED region has increased somewhat faster than the State of Kansas (2.7 percent) did from 1988 to 1992.

Table 10  
 EMPLOYMENT LEVELS BY INDUSTRY: 1983, 1989, 1993  
 NEKCRED COUNTIES AND KANSAS  
 (IN THOUSANDS)

Industry	NEKCRED			Kansas		
	1983	1989	1993	1983	1989	1993
Ag. Services	399	539	488	10,086	14,170	17,214
Mining	140	109	48	46,063	30,165	25,228
Construction	1,400	1,524	1,696	60,884	62,305	70,772
Manufacturing	3,175	3,920	4,347	169,289	189,508	187,966
Transportation	1,403	1,197	1,331	71,825	76,079	74,459
Wholesale	1,231	1,643	1,587	68,465	74,181	75,253
Retail	4,482	4,788	5,016	205,291	236,663	253,269
F.I.R.E.	1,445	1,605	1,493	88,851	95,754	93,505
Services	6,278	6,820	7,841	273,494	331,984	379,912
Gov't Services	5,153	6,010	6,632	223,378	253,120	271,523
Subtotal-Non-Farm	25,696	28,447	30,897	1,217,626	1,363,929	1,449,101
Farm Employment	7,632	6,178	5,779	108,402	85,845	80,292
Total Employment	33,328	34,625	36,676	1,326,028	1,449,774	1,529,393

*Note:* Employment data are based on an individual's place of work.

Source: Bureau of Economic Analysis, Regional Economic Information System, Table CA25.

**Table 10a**  
**EMPLOYMENT LEVELS BY INDUSTRY GROWTH RATES: 1983-1989, 1989-1993**  
**NEKCRED COUNTIES AND KANSAS**  
**(IN THOUSANDS)**

Industry	NEKCRED		Kansas	
	83-89	89-93	83-89	89-93
Ag. Services	35.1%	-9.5%	40.5%	21.5%
Mining	-22.1	-56.0	-34.5	-16.4
Construction	8.9	11.3	2.3	13.6
Manufacturing	23.5	10.9	11.9	-0.8
Transportation	-14.7	11.1	5.9	-2.1
Wholesale	33.5	-3.4	8.3	1.4
Retail	6.8	4.8	15.3	7.0
F.I.R.E.	11.1	-7.0	7.8	-2.3
Services	8.6	15.0	21.4	14.4
Gov't Services	16.6	10.3	13.3	7.3
Subtotal-Non-Farm	10.7	8.6	12.0	6.2
Farm Employment	-19.1	-6.5	-20.8	-6.5
Total Employment	3.9	5.9	9.3	5.5

*Note:* Employment data are based on an individual's place of work.

Source: Bureau of Economic Analysis, Regional Economic Information System, Table CA25. Calculations: KCCED/IPPBR.



**Table 11**  
**NUMBER OF FIRMS BY INDUSTRY**  
**NEKCRED AND KANSAS: 1980, 1985, 1992**

Industry	NEKCRED			Kansas		
	1980	1985	1992	1980	1985	1992
Ag. Services	21	21	33	547	764	1,104
Mining	6	10	11	1,137	1,446	1,134
Construction	163	155	173	5,149	5,361	6,066
Manufacturing	79	83	94	2,919	3,228	3,511
Transportation	97	88	104	2,881	3,562	3,232
Wholesale	153	150	128	5,267	5,630	5,747
Retail	457	465	455	15,204	16,594	16,839
F.I.R.E.	117	112	154	4,893	5,399	6,500
Services	355	409	527	14,270	18,235	22,531
Unclassified	79	154	31	2,754	5,291	1,184
<b>Total Firms</b>	<b>1,527</b>	<b>1,647</b>	<b>1,710</b>	<b>55,021</b>	<b>65,510</b>	<b>67,630</b>

Source: County Business Patterns. Calculations: KCCED/IPPBR.

**Table 12**  
**NUMBER OF MANUFACTURING BUSINESSES FOR**  
**NEKCRED COUNTIES, NEIGHBORING COUNTIES, AND KANSAS: 1988, 1990, 1992**

	<u>1988</u>	<u>1990</u>	<u>1992</u>	<u>88-90</u>	<u>90-92</u>
Atchison	19	21	22	10.5%	4.8%
Brown	16	11	16	-31.3	45.5
Doniphan	12	10	11	-16.7	10.0
Jackson	7	9	11	28.6	22.2
Jefferson	9	13	13	44.4	0.0
Nemaha	20	23	21	15.0	-8.7
NEKCRED	83	87	94	4.8	8.0
Douglas	85	88	99	3.5	12.5
Johnson	510	580	594	13.7	2.4
Leavenworth	32	34	33	6.3	-2.9
Shawnee	128	138	145	7.8	5.1
Marshall	14	17	22	21.4	29.4
Pottawatomie	15	16	18	6.7	12.5
Waubaussee	8	13	9	62.5	-30.8
Andrew (MO)	3	4	4	33.3	0.0
Buchanan (MO)	96	104	108	8.3	3.8
Holt (MO)	4	7	8	75.0	14.3
Platte (MO)	46	55	63	19.6	14.5
Pawnee (NE)	2	2	3	0.0	50.0
Richardson (NE)	8	9	13	12.5	44.4
Neighboring Counties	951	1,067	1,119	12.2	4.9
Kansas	3,179	3,367	3,511	5.9	4.3

Source: "County Business Patterns: Kansas," 1980-1992, "County Business Patterns: Missouri", 1980-1992, "County Business Patterns: Nebraska", 1980-1992, Kansas County Profile, KCCED/IPBPR, University of Kansas.

**Table 13**  
**NUMBER OF RETAIL BUSINESSES FOR**  
**NEKCRED COUNTIES, NEIGHBORING COUNTIES, AND KANSAS: 1980-1992**

	<u>1988</u>	<u>1990</u>	<u>1992</u>	<u>88-90</u>	<u>90-92</u>
Atchison	98	95	97	-3.1%	2.1%
Brown	66	73	65	10.6	-11.0
Doniphan	39	37	37	-5.1	0.0
Jackson	64	67	67	4.7	0.0
Jefferson	70	81	91	15.7	12.3
Nemaha	105	97	98	-7.6	1.0
NEKCRED	442	450	455	1.8	1.1
Douglas	478	501	554	4.8	10.6
Johnson	2,229	2,423	2,478	8.7	2.3
Leavenworth	242	254	277	5.0	9.1
Shawnee	1,108	1,161	1,106	4.8	-4.7
Marshall	92	101	115	9.8	13.9
Pottawatomie	87	98	111	12.6	13.3
Waubaussee	33	36	38	9.1	5.6
Andrew (MO)	41	43	53	4.9	23.3
Buchanan (MO)	540	576	571	6.7	-0.9
Holt (MO)	39	40	37	2.6	-7.5
Platte (MO)	278	301	288	8.3	-4.3
Pawnee (NE)	22	21	22	-4.5	4.8
Richardson (NE)	91	94	84	3.3	-10.6
Total Neighboring Counties	5,371	5,743	5,818	6.9	1.3
Kansas	16,401	16,845	16,839	2.7	0.0

Source: U.S. Bureau of the Census, "Census of Retail Trade, 1992" (RC-92-A-17), "County Business Patterns: Kansas," 1980-1992, "County Business Patterns: Oklahoma", 1980-1992, Kansas County Profile, KCCED/IPPBR, University of Kansas.

## AGRICULTURE

This section contains data on the total value of field crops and the total value of livestock and poultry. These data will help determine whether the overall importance of these two sectors in the county has been increasing or decreasing and how it compares with surrounding counties and the state as a whole. The NEKCRED counties' economies have been based on manufacturing, retail, and government services. However, agriculture has been important industries for Kansas, and it is therefore worthwhile to see how the county rates in these areas.

### Key Findings: Agriculture

- In 1993, the NEKCRED Counties' field crop production represented 4.7 percent of the State of Kansas' field crop production (**Table 14**). The average total value of field crop production decreased 0.7 percent while the State of Kansas experienced an 26.8 percent increase (**Table 14**).
- In 1993, the NEKCRED Counties' value of livestock and poultry represented 4.4 percent of the State of Kansas' total value of livestock and poultry (**Table 15**). The average total value of livestock and poultry decreased 5.2 percent from 1991 to 1993, while the State of Kansas increased 4.2 percent for the same time period (**Table 15**).

**Table 14**  
**TOTAL VALUE OF FIELD CROPS: 1988-1993**  
**NEKCRED COUNTIES, AND KANSAS**

	Value of Field Crops (\$ millions)						88-93 Change
	<u>1988</u>	<u>1989</u>	<u>1990</u>	<u>1991</u>	<u>1992</u>	<u>1993</u>	
Atchison	21	19	22	17	28	18	-14.3%
Brown	38	34	44	36	49	36	-5.3
Doniphan	27	26	30	33	41	31	14.8
Jackson	14	20	18	17	22	15	7.1
Jefferson	20	16	19	16	26	18	-10.0
Nemaha	23	31	36	30	39	24	4.3
 NEKCRED	 143	 146	 169	 149	 205	 142	 -0.7
 Kansas	 2,377	 2,861	 2,729	 2,579	 2,988	 3,014	 26.8
 Crop Price Index +	 138	 155	 129	 124	 140	 131	 -5.1

\* Does not include any government program payments, value of sugar beets, or cotton acreage value, until 1991, then only government program payments are not included.

+1977 prices = 100

A = preliminary figure

*Note:* Calculation of 88-93 Change may vary due to rounding.

Source: Kansas Agricultural Statistics, Kansas Farm Facts; IPPBR calculations.

**Table 15**  
**TOTAL VALUE OF LIVESTOCK AND POULTRY: 1988-1993**  
**NEKCRED COUNTIES, AND KANSAS**

---

**Value of Livestock and Poultry (\$ millions)**

	<u>1988</u>	<u>1989</u>	<u>1990</u>	<u>1991</u>	<u>1992</u>	<u>1993</u>	88-93 Change
Atchison	14	13	16	16	16	16	14.3%
Brown	23	21	25	25	21	23	0.0
Doniphan	11	11	15	13	11	11	0.0
Jackson	17	16	20	17	16	17	0.0
Jefferson	16	14	16	15	14	15	-6.3
Nemaha	38	39	47	48	43	45	18.4
NEKCRED	119	114	139	134	121	127	6.7
Kansas	2,438	2,625	2,929	2,857	2,759	2,874	17.9
Livestock & Products Price Index +	186	192	205	196	193	199	7.0

---

+1977 prices = 100  
A = preliminary figure

Source: Kansas Agricultural Statistics, Kansas Farm Facts; IPPBR calculations.

## INCOME

The Income Section discusses personal per capita income, total personal income, and total personal income growth rates. Per capita personal income shows the relative wealth of the area compared with the state. As the productivity of business and industry increase, personal per capita income also rises. Decrease or stable rates may be the result of mature or declining industry.

### Key Findings: Income

- Per capita personal incomes for the NEKCRED counties were lower than that of the State of Kansas (**Table 16** and **Appendix H**). However, from 1980-1990, per capita personal income increased at a greater rate in each of the six NEKCRED counties than it did for Kansas (79.5 percent). This closing of the gap continued from 1990-93 for Atchison, Doniphan, and Jackson counties, whose per capita personal income rates were greater than the State's 12.5 percent. [*See Appendix H for further detail on each county's per capita personal income.*]
- Total personal income for the six NEKCRED counties combined has increased at a somewhat slower rate (11.3 percent) than the State of Kansas (15.0 percent) from 1990 to 1993 (**Table 17**).
- Per capita income for the NEKCRED Counties is less than other regions in the State of Kansas indicating that the region is not as wealthy as other parts of the State (**Map 6**).
- Transfer payments as a percentage of total personal income has steadily increased from 1987 (17.6 percent) to 1993 (21.4 percent) (**Table 18**). Transfer payments as a percentage of total personal income for the NEKCRED counties have been higher than the State of Kansas. [*See Appendix I for more detail on transfer payments, which includes breakdowns for: retirement and disability insurance benefits, medical payments, income maintenance benefit payments, unemployment insurance benefit payments, veterans benefits payments, federal education and training benefit payments, payments to non-profit institutions, and business payments to individuals.*]

**Table 16**  
**PER CAPITA PERSONAL INCOME**  
**NEKCRED COUNTIES AND KANSAS**  
**1980, 1990, 1993**

	1980	1990	Growth 1993	Rate 80-90	90-93	Income Ratio: 1993
Atchison	\$7,781	\$14,023	16,038	80.2%	14.8%	80.8%
Brown	7,150	14,805	16,518	107.1	11.6	83.2
Doniphan	6,841	14,602	16,648	113.4	14.0	83.9
Jackson	7,563	15,462	17,424	104.4	12.7	87.8
Jefferson	8,454	15,737	17,179	86.1	9.2	86.5
Nemaha	7,091	17,202	17,972	142.6	4.5	90.5
Kansas	9,829	17,639	19,849	79.5	12.5	---

Source: University of Kansas, Kansas Center for Community Economic Development, "Kansas County Profile, 1994", Bureau of Economic Analysis, Regional Economic Information System, Table CA5, Local Area Personal Income 1969-1992, U.S. Department of Commerce, BEA.



**Table 17**  
**TOTAL PERSONAL INCOME**  
**NEKCRED COUNTIES AND KANSAS: 1988-1993**

---

	<u>1988</u>	<u>1990</u>	<u>1993</u>	<u>88-90</u>	<u>90-93</u>
Atchison	214,794	237,113	270,776	10.4%	14.2%
Brown	142,014	164,808	181,388	16.1	10.1
Doniphan	108,049	118,423	132,469	9.6	11.9
Jackson	157,056	177,823	201,408	13.2	13.3
Jefferson	214,617	250,881	283,283	16.9	12.9
Nemaha	152,549	179,415	186,998	17.6	4.2
NEKCRED	989,079	1,128,463	1,256,322	14.1	11.3
Kansas (in 000's)	38,778	43,763	50,319	12.9	15.0

---

Source: Bureau of Economic Analysis, Regional Economic Information System, Table CA5, Line Codes 010, 041, 042, 046, 047, 050, 060, 071, 072.

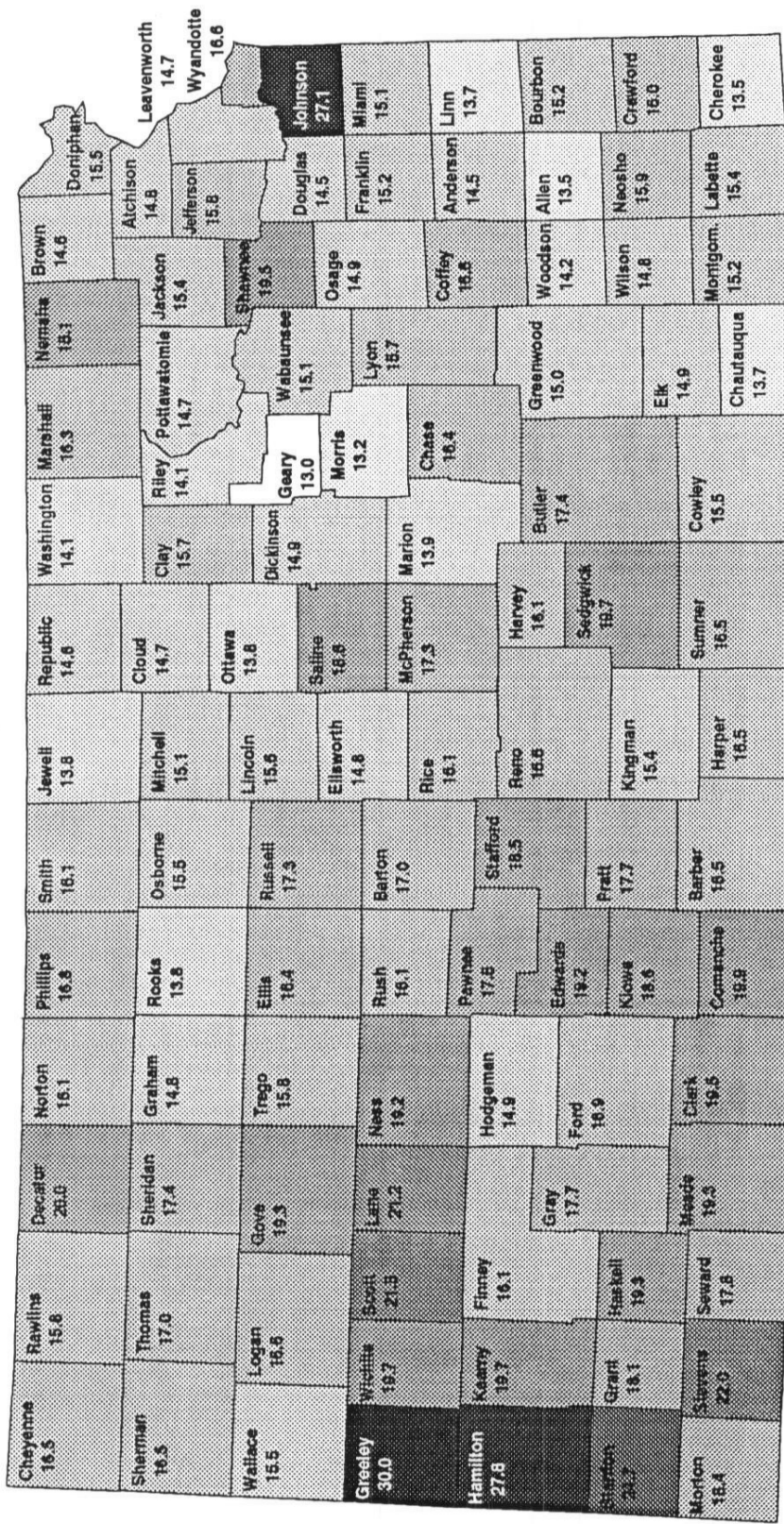
**Table 18**  
**TRANSFER PAYMENTS AS A PERCENTAGE OF TOTAL PERSONAL INCOME**  
**NEKCRED COUNTIES: 1987-1993**

	1987	1988	1989	1990	1991	1992	1993
Atchison	19.2%	19.0%	19.5%	19.8%	21.0%	21.0%	21.9%
Brown	22.1	23.4	23.7	23.3	25.3	26.1	27.6
Doniphan	18.4	18.8	20.1	20.3	20.3	21.1	23.6
Jackson	16.0	15.9	16.7	17.2	19.1	19.0	19.7
Jefferson	14.7	15.5	15.8	16.0	16.8	16.8	17.7
Nemaha	15.8	16.3	17.3	16.3	17.6	18.2	20.4
NEKCRED	17.6	17.9	18.6	18.6	19.8	20.0	21.4
Kansas	13.8	13.8	14.4	14.5	15.4	15.9	16.3

*Note:* See Appendix I for further breakdown of transfer payments. Transfer payments include retirement and disability insurance benefits, medical payments, income maintenance benefit payments, unemployment insurance benefit payments, veterans benefits payments, federal education and training benefit payments, payments to non-profit institutions, and business payments to individuals.

Source: Bureau of Economic Analysis, Regional Economic Information System, Table CA5, Table CA35.

MAP 6. PER CAPITA INCOME: 1991 (DOLLARS IN THOUSANDS)



Source: Institute for Public Policy and Business Research, University of Kansas, "Kansas Statistical Abstract 1992-1993", using data from Bureau of Economic Analysis, "News", October 7, 1993.

## EDUCATION

Education data includes tables on the educational attainment of the population and high school drop outs. Education is one of the keys to a strong community. Residents who have a strong educational background will be more employable and command higher salaries. Employers will benefit as well because they will most likely experience lower turnover and training costs. Individuals with lower education have a harder time finding jobs that can supply a living wage and may be more likely to use social services such as food stamps.

### Key Findings: Education

- In 1990, 32.9 percent of the residents over the age of 25 in the six NEKCRED counties had obtained some post-high school education compared to 48.4 percent for the State of Kansas (**Table 19**). In other words, NEKCRED has a greater percentage of its over 25 population less educated than the State. This would tend to indicate a greater need for education and training programs in the region.
- The number of high school drop outs can vary quite a bit from year to year (**Table 20**). Since 1989, drop outs have declined for the NEKCRED region while drop out numbers have increased for Kansas. Both Kansas and the NEKCRED region have experienced declines from 1991 to 1992. Continuation of this trend is important to the improvement of the region's labor market, with better educated, trained and skilled work force equalling greater employability.
- The number of high school graduates in the NEKCRED region has remained relatively constant from 1991 to 1993. The NEKCRED Counties graduated 850, 854, and 853 in 1991, 1992, and 1993, respectively (**Table 21**). This indicates a steady supply of new entrants into the labor force.
- Given that future jobs will require some kind of post-high school training and the education level of the over 25 population in the NEKCRED region, further education and training of adult workers may be necessary to increase the skill level of this portion of the population.

**Table 19**  
**EDUCATIONAL ATTAINMENT OF PERSONS OVER 25**  
**AS A PERCENTAGE OF POPULATION OF PERSONS OVER 25**  
**1990**  
**NEKCRED COUNTIES, AND KANSAS**

---

	Completed Less than 9th Grade	9-12th Grade, No Diploma	High School Graduate	Some College	College Degree
Atchison	10.6%	11.9%	45.6%	14.1%	17.8%
Brown	9.5	12.1	41.9	18.0	18.5
Doniphan	12.6	14.4	39.9	17.0	16.1
Jackson	9.3	9.9	48.8	17.6	14.4
Jefferson	8.1	10.9	45.0	19.6	16.4
Nemaha	15.8	8.5	48.5	12.0	15.2
NEKCRED	10.7	11.2	45.2	16.5	16.4
Kansas	7.8	11.0	32.8	21.9	26.5

---

*Note:* College Degree includes Associates, Bachelors, and Graduate Degrees.

Source: U.S. Bureau of the Census, "1990 Census of Population and Housing," STF3A. Kansas County Profile. Calculations: KCCED/IPPBR.

**Table 20**  
**HIGH SCHOOL DROPOUTS: 1989-1992**  
**NEKCRED COUNTIES, AND KANSAS**

---

	<u>1989</u>	<u>1990</u>	<u>1991</u>	<u>1992</u>
Atchison	37	46	38	23
Brown	15	10	15	10
Doniphan	10	17	16	15
Jackson	14	20	15	18
Jefferson	19	12	29	28
Nemaha	4	2	1	1
NEKCRED	99	107	114	95
Kansas	4,795	4,995	5,738	5,651

---

Source: Kansas State Department of Education, "1992-93 Secondary School Dropouts." Kansas County Profile.

**Table 21**  
**HIGH SCHOOL GRADUATES: 1989-1993**  
**NEKCRED COUNTIES, AND KANSAS**

---

	<u>1989</u>	<u>1990</u>	<u>1991</u>	<u>1992</u>	<u>1993</u>
Atchison	177	167	156	141	122
Brown	108	114	111	110	117
Doniphan	118	113	101	94	106
Jackson	177	113	134	147	145
Jefferson	259	249	220	240	233
Nemaha	131	138	128	122	130
NEKCRED	970	894	850	854	853
Kansas	26,848	25,367	24,414	24,129	24,720

---

Source: Kansas State Department of Education, "1992-93 Secondary School Dropouts." Kansas County Profile.

## INFRASTRUCTURE: TELEPHONE SERVICE

An inventory of the telephone service area providers is the first step in developing a telecommunication's plan for the region. Therefore, a map of the telephone companies providing service in Kansas was obtained from the Kansas State Corporation Commission, Utilities Division. From this map, **Appendix J** was developed, which consists of maps of the northeast Kansas region and the individual NEKCRED counties. Ten telephone companies provide service to northeast Kansas and six of those ten companies provide service to the six NEKCRED counties (**Map 7, Appendix J**). [*See Appendix J for further analysis and information on telephone companies and their service areas.*]

## CONCLUSION

Data for the NEKCRED region and Kansas shows that a restructuring of the economy is occurring. It appears that a shift is occurring from manufacturing to service-oriented industries. The reliance on manufacturing jobs and the continued population loss in NEKCRED makes it difficult for the region to adapt quickly enough to economic changes. Northeast Kansas, like most of Kansas, needs an even greater emphasis on creating, retaining and attracting new businesses which will increase the employment base and level of personal income. Such a focus should improve the region's economy and ability to effectively compete with the other regions in and out of Kansas.



---

**Institute for Public Policy and Business Research**  
**Technical Report Series**

---

**APPENDICES FOR REPORT NO. 29**

*Economic Trends for Northeast Kansas*

**Kansas Center for Community Economic Development**

**Institute for Public Policy and Business Research**  
The University of Kansas

November 1995

**APPENDICES FOR *ECONOMIC TRENDS FOR NORTHEAST KANSAS***

**APPENDIX A**

Population Totals, Growth Rates, Rank & Share ..... A-1 to A-6

**APPENDIX B**

Population and Job Growth Rates ..... B-1 to B-6

**APPENDIX C**

Number of Firms by Number of Employees ..... C-1 to C-6

**APPENDIX D**

Commuting Patterns ..... D-1 to D-15

**APPENDIX E**

Employment Levels by Industry and Growth Rates ..... E-1 to E-6

**APPENDIX F**

Number of Firms by Industry ..... F-1 to F-6

**APPENDIX G**

Per Capita Personal Income ..... G-1 to G-6

**APPENDIX H**

Per Capita Personal Income - Figures ..... H-1 to H-6

**APPENDIX I**

Transfer Payments ..... I-1 to I-7

**APPENDIX J**

Telephone Exchange Service Areas ..... J-1 to J-9

---

**APPENDIX A**  
**POPULATION TOTALS, GROWTH RATES, RANK & SHARE**

---

**Atchison County**  
**Brown County**  
**Doniphan County**  
**Jackson County**  
**Jefferson County**  
**Nemaha County**

**Table 1a**  
**ATCHISON COUNTY**  
**POPULATION TOTALS, GROWTH RATES, RANK & SHARE**  
**ACTUAL 1890-1990, ESTIMATES 1991-1994**

<u>Year</u>	<u>Atchison</u>		<u>Kansas</u>		<u>Atchison</u>		
	<u>Population Total</u>	<u>Growth Rate</u>	<u>Population Total</u>	<u>Growth Rate</u>	<u>Share (%)</u>	<u>Rank</u>	<u>Growth Index +</u>
1890	26,758		1,427,096		1.87	12	
1900	28,606	6.9	1,470,495	3.0	1.95	10	2.95
1910	28,107	-1.7	1,690,949	15.0	1.66	12	-0.30
1920	23,411	-16.7	1,769,257	4.6	1.32	19	-1.69
1930	23,945	-2.3	1,880,999	6.3	1.27	18	-0.11
1940	22,222	-7.2	1,801,028	-4.3	1.23	20	2.31
1950	21,496	-3.3	1,905,299	5.8	1.13	22	-2.22
1960	20,898	-2.8	2,178,611	14.3	0.96	25	-0.42
1970	19,165	-8.3	2,249,071	3.2	0.85	27	-1.62
1980	18,397	-4.0	2,364,236	5.1	0.78	29	0.95
1990	16,932	-8.0	2,477,588	4.8	0.68	30	-0.97
1991*	16,822	-0.6	2,491,659	0.6	0.68	30	-0.06
1992*	16,801	-0.1	2,517,791	1.0	0.67	31	0.02
1993*	16,883	0.5	2,535,097	0.7	0.67	31	0.42
1994*	16,754	-0.8	2,554,047	0.7	0.66	32	0.06

+ Atchison County Growth Rate divided by Kansas Growth Rate (=1) when county and state growth rates are equal.

\* Estimate

Source: Population Totals: U.S. Bureau of the Census, Fifteenth Census of the United States, 1930 Vol. 1; "Census of Population, 1960: Number of Inhabitants; 1980 Census of Population", Vol. 1, Chapter A, Part 18; "1990 Decennial Census", mimeographed sheet; Population Projection: Floerchinger, Teresa D., "Kansas Population Projections 1990-2030", Kansas Division of the Budget, September 1992; Population Estimates, and Population Distribution Branches, U.S. Bureau of the Census; 1994 Population Estimates for Counties, Population Estimates Branch, U.S. Bureau of the Census.

**Table 1b**  
**BROWN COUNTY**  
**POPULATION TOTALS, GROWTH RATES, RANK & SHARE**  
**ACTUAL 1890-1990, ESTIMATES 1991-1994**

<u>Year</u>	<u>Brown</u>		<u>Kansas</u>			<u>Brown</u>	
	<u>Population Total</u>	<u>Growth Rate</u>	<u>Population Total</u>	<u>Growth Rate</u>	<u>Share (%)</u>	<u>Rank</u>	<u>Growth Index +</u>
1890	20,319		1,427,096		1.42	23	
1900	22,369	10.1	1,470,495	3.0	1.52	19	3.32
1910	21,314	-4.7	1,690,949	15.0	1.26	23	-0.31
1920	20,949	-1.7	1,769,257	4.6	1.18	26	-0.37
1930	20,553	-1.9	1,880,999	6.3	1.09	29	-0.30
1940	17,395	-15.4	1,801,028	-4.3	0.97	32	3.61
1950	14,651	-15.8	1,905,299	5.8	0.77	37	-2.72
1960	13,229	-9.7	2,178,611	14.3	0.61	37	-0.68
1970	11,685	-11.7	2,249,071	3.2	0.52	41	-3.61
1980	11,955	2.3	2,364,236	5.1	0.51	40	0.45
1990	11,128	-6.9	2,477,588	4.8	0.45	39	-1.44
1991*	11,130	0.0	2,491,659	0.6	0.45	39	0.03
1992*	11,077	-0.5	2,517,791	1.0	0.44	39	-0.45
1993*	10,981	-0.9	2,535,097	0.7	0.43	39	-1.26
1994*	11,031	0.5	2,554,047	0.7	0.43	39	0.61

+ Brown County Growth Rate divided by Kansas Growth Rate (=1) when county and state growth rates are equal.

\* Estimate

Source: Population Totals: U.S. Bureau of the Census, Fifteenth Census of the United States, 1930 Vol. 1; "Census of Population, 1960: Number of Inhabitants; 1980 Census of Population", Vol. 1, Chapter A, Part 18; "1990 Decennial Census", mimeographed sheet; Population Projection: Floerchinger, Teresa D., "Kansas Population Projections 1990-2030", Kansas Division of the Budget, September 1992; Population Estimates, and Population Distribution Branches, U.S. Bureau of the Census; 1994 Population Estimates for Counties, Population Estimates Branch, U.S. Bureau of the Census.

**Table 1c**  
**DONIPHAN COUNTY**  
**POPULATION TOTALS, GROWTH RATES, RANK & SHARE**  
**ACTUAL 1890-1990, ESTIMATES 1991-1994**

<u>Year</u>	<u>Doniphan</u>		<u>Kansas</u>		<u>Doniphan</u>		
	<u>Population Total</u>	<u>Growth Rate</u>	<u>Population Total</u>	<u>Growth Rate</u>	<u>Share (%)</u>	<u>Rank</u>	<u>Growth Index +</u>
1890	13,535		1,427,096		0.95	47	
1900	15,079	11.4	1,470,495	3.0	1.03	44	3.75
1910	14,422	-4.4	1,690,949	15.0	0.85	48	-0.29
1920	13,438	-6.8	1,769,257	4.6	0.76	52	-1.47
1930	14,063	4.7	1,880,999	6.3	0.75	46	0.74
1940	12,936	-8.0	1,801,028	-4.3	0.72	46	1.88
1950	10,499	-18.8	1,905,299	5.8	0.55	50	-3.25
1960	9,574	-8.8	2,178,611	14.3	0.44	53	-0.61
1970	9,107	-4.9	2,249,071	3.2	0.40	49	-1.51
1980	9,268	1.8	2,364,236	5.1	0.39	47	0.35
1990	8,134	-12.2	2,477,588	4.8	0.33	50	-2.55
1991*	8,129	-0.1	2,491,659	0.6	0.33	50	-0.11
1992*	8,068	-0.8	2,517,791	1.0	0.32	50	0.72
1993*	7,957	-1.4	2,535,097	0.7	0.31	51	-2.00
1994*	7,625	-4.2	2,554,047	0.7	0.30	55	-5.58

+ Doniphan County Growth Rate divided by Kansas Growth Rate (=1) when county and state growth rates are equal.

\* Estimate

Source: Population Totals: U.S. Bureau of the Census, Fifteenth Census of the United States, 1930 Vol. 1; "Census of Population, 1960: Number of Inhabitants; 1980 Census of Population", Vol. 1, Chapter A, Part 18; "1990 Decennial Census", mimeographed sheet; Population Projection: Floerchinger, Teresa D., "Kansas Population Projections 1990-2030", Kansas Division of the Budget, September 1992; Population Estimates, and Population Distribution Branches, U.S. Bureau of the Census; 1994 Population Estimates for Counties, Population Estimates Branch, U.S. Bureau of the Census.

**Table 1d**  
**JACKSON COUNTY**  
**POPULATION TOTALS, GROWTH RATES, RANK & SHARE**  
**ACTUAL 1890-1990, ESTIMATES 1991-1994**

<u>Year</u>	<u>Jackson</u>		<u>Kansas</u>		<u>Jackson</u>		
	<u>Population Total</u>	<u>Growth Rate</u>	<u>Population Total</u>	<u>Growth Rate</u>	<u>Share (%)</u>	<u>Rank</u>	<u>Growth Index +</u>
1890	14,626		1,427,096		1.02	43	
1900	17,117	17.0	1,470,495	3.0	1.16	36	5.60
1910	16,861	-1.5	1,690,949	15.0	1.00	38	-0.10
1920	15,495	-8.1	1,769,257	4.6	0.88	39	-1.75
1930	14,776	-4.6	1,880,999	6.3	0.79	40	-0.73
1940	13,382	-9.4	1,801,028	-4.3	0.74	43	2.22
1950	11,098	-17.1	1,905,299	5.8	0.58	47	-2.95
1960	10,309	-7.1	2,178,611	14.3	0.47	48	-0.50
1970	10,342	0.3	2,249,071	3.2	0.46	43	0.10
1980	11,644	12.6	2,364,236	5.1	0.49	42	2.46
1990	11,525	-1.0	2,477,588	4.8	0.47	38	-0.21
1991*	11,519	-0.1	2,491,659	0.6	0.46	38	-0.09
1992*	11,465	-0.5	2,517,791	1.0	0.46	37	-0.45
1993*	11,559	0.8	2,535,097	0.7	0.46	37	1.19
1994*	11,634	0.6	2,554,047	0.7	0.46	37	0.87

+ Jackson County Growth Rate divided by Kansas Growth Rate (=1) when county and state growth rates are equal.

\* Estimate

Source: Population Totals: U.S. Bureau of the Census, Fifteenth Census of the United States, 1930 Vol. 1; "Census of Population, 1960: Number of Inhabitants; 1980 Census of Population", Vol. 1, Chapter A, Part 18; "1990 Decennial Census", mimeographed sheet; Population Projection: Floerchinger, Teresa D., "Kansas Population Projections 1990-2030", Kansas Division of the Budget, September 1992; Population Estimates, and Population Distribution Branches, U.S. Bureau of the Census; 1994 Population Estimates for Counties, Population Estimates Branch, U.S. Bureau of the Census.

**Table 1e**  
**JEFFERSON COUNTY**  
**POPULATION TOTALS, GROWTH RATES, RANK & SHARE**  
**ACTUAL 1890-1990, ESTIMATES 1991-1994**

<u>Year</u>	<u>Jefferson</u>		<u>Kansas</u>		<u>Jefferson</u>		
	<u>Population Total</u>	<u>Growth Rate</u>	<u>Population Total</u>	<u>Growth Rate</u>	<u>Share (%)</u>	<u>Rank</u>	<u>Growth Index +</u>
1890	16,620		1,427,096		1.16	36	
1900	17,533	5.5	1,470,495	3.0	1.19	35	1.81
1910	15,826	-9.7	1,690,949	15.0	0.94	40	-0.65
1920	14,750	-6.8	1,769,257	4.6	0.83	42	-1.47
1930	14,129	-4.2	1,880,999	6.3	0.75	45	-0.67
1940	12,718	-10.0	1,801,028	-4.3	0.71	47	2.35
1950	11,084	-12.8	1,905,299	5.8	0.58	48	-2.22
1960	11,252	1.5	2,178,611	14.3	0.52	45	0.11
1970	11,945	6.2	2,249,071	3.2	0.53	38	1.90
1980	15,207	27.3	2,364,236	5.1	0.64	34	5.33
1990	15,905	4.6	2,477,588	4.8	0.64	32	0.96
1991*	16,001	0.6	2,491,659	0.6	0.64	32	1.06
1992*	16,239	1.5	2,517,791	1.0	0.64	32	1.42
1993*	16,490	1.5	2,535,097	0.7	0.65	32	2.25
1994*	16,822	2.0	2,554,047	0.7	0.66	31	2.69

+ Jefferson County Growth Rate divided by Kansas Growth Rate (=1) when county and state growth rates are equal.

\* Estimate

Source: Population Totals: U.S. Bureau of the Census, Fifteenth Census of the United States, 1930 Vol. 1; "Census of Population, 1960: Number of Inhabitants; 1980 Census of Population", Vol. 1, Chapter A, Part 18; "1990 Decennial Census", mimeographed sheet; Population Projection: Floerchinger, Teresa D., "Kansas Population Projections 1990-2030", Kansas Division of the Budget, September 1992; Population Estimates, and Population Distribution Branches, U.S. Bureau of the Census; 1994 Population Estimates for Counties, Population Estimates Branch, U.S. Bureau of the Census.



**Table 1f**  
**NEMAHA COUNTY**  
**POPULATION TOTALS, GROWTH RATES, RANK & SHARE**  
**ACTUAL 1890-1990, ESTIMATES 1991-1994**

<u>Year</u>	<u>Nemaha</u>		<u>Kansas</u>		<u>Nemaha</u>		
	<u>Population Total</u>	<u>Growth Rate</u>	<u>Population Total</u>	<u>Growth Rate</u>	<u>Share (%)</u>	<u>Rank</u>	<u>Growth Index +</u>
1890	19,249		1,427,096		1.35	28	
1900	20,376	5.9	1,470,495	3.0	1.39	26	1.93
1910	19,072	-6.4	1,690,949	15.0	1.13	31	-0.43
1920	18,487	-3.1	1,769,257	4.6	1.04	31	-0.66
1930	18,342	-0.8	1,880,999	6.3	0.98	34	-0.12
1940	16,761	-8.6	1,801,028	-4.3	0.93	36	2.03
1950	14,341	-14.4	1,905,299	5.8	0.75	38	-2.49
1960	12,897	-10.1	2,178,611	14.3	0.59	39	-0.70
1970	11,825	-8.3	2,249,071	3.2	0.53	39	-2.57
1980	11,211	-5.2	2,364,236	5.1	0.47	43	-1.01
1990	10,446	-6.8	2,477,588	4.8	0.42	42	-1.42
1991*	10,444	0.0	2,491,659	0.6	0.42	41	-0.03
1992*	10,412	-0.3	2,517,791	1.0	0.41	41	-0.29
1993*	10,405	-0.1	2,535,097	0.7	0.41	41	-0.10
1994*	10,443	0.4	2,554,047	0.7	0.41	41	0.49

+ Nemaha County Growth Rate divided by Kansas Growth Rate (=1) when county and state growth rates are equal.

\* Estimate

Source: Population Totals: U.S. Bureau of the Census, Fifteenth Census of the United States, 1930 Vol. 1; "Census of Population, 1960: Number of Inhabitants; 1980 Census of Population", Vol. 1, Chapter A, Part 18; "1990 Decennial Census", mimeographed sheet; Population Projection: Floerchinger, Teresa D., "Kansas Population Projections 1990-2030", Kansas Division of the Budget, September 1992; Population Estimates, and Population Distribution Branches, U.S. Bureau of the Census; 1994 Population Estimates for Counties, Population Estimates Branch, U.S. Bureau of the Census.

---

**APPENDIX B**  
**POPULATION AND JOB GROWTH RATES**

---

**Atchison County**  
**Brown County**  
**Doniphan County**  
**Jackson County**  
**Jefferson County**  
**Nemaha County**

**Table 6a**  
**ATCHISON COUNTY**  
**POPULATION AND JOB GROWTH RATES**

---

	<u>80-82</u>	<u>82-84</u>	<u>84-86</u>	<u>86-88</u>	<u>88-90</u>	<u>90-92</u>	<u>92-94</u>
Job Growth	-9.98%	0.80%	-3.00%	5.68%	1.06%	2.66%	7.79%
Population Growth	0.02%	-1.63%	-1.10%	-0.56%	-4.88%	-0.77%	-0.28%

---

*Note:* Employment data are base on an individual's place of residence.

Source: Kansas Statistical Abstract 1992-1993, IPPBR, University of Kansas; Kansas Department of Human Resources; and, 1994 Population Estimates Branch, U.S. Bureau of the Census.

**Table 6b**  
**BROWN COUNTY**  
**POPULATION AND JOB GROWTH RATES**

---

	<u>80-82</u>	<u>82-84</u>	<u>84-86</u>	<u>86-88</u>	<u>88-90</u>	<u>90-92</u>	<u>92-94</u>
Job Growth	-9.80%	-15.36%	2.97%	3.28%	9.26%	-6.31%	-4.50%
Population Growth	-1.30%	-0.85%	-2.56%	0.00%	-2.39%	-0.46%	-0.42%

---

*Note:* Employment data are base on an individual's place of residence.

Source: Kansas Statistical Abstract 1992-1993, IPPBR, University of Kansas; Kansas Department of Human Resources; and, 1994 Population Estimates Branch, U.S. Bureau of the Census.

**Table 6c**  
**DONIPHAN COUNTY**  
**POPULATION AND JOB GROWTH RATES**

---

	<u>80-82</u>	<u>82-84</u>	<u>84-86</u>	<u>86-88</u>	<u>88-90</u>	<u>90-92</u>	<u>92-94</u>
Job Growth	-0.75%	-17.99%	-1.79%	0.72%	3.89%	1.71%	1.61%
Population Growth	-0.73%	-1.09%	0.00%	-1.10%	-9.62%	-0.81%	-5.49%

---

*Note:* Employment data are base on an individual's place of residence.

Source: Kansas Statistical Abstract 1992-1993, IPPBR, University of Kansas; Kansas Department of Human Resources; and, 1994 Population Estimates Branch, U.S. Bureau of the Census.

**Table 6d**  
**Population and Job Growth Rates**  
**Jackson**

---

	<u>80-82</u>	<u>82-84</u>	<u>84-86</u>	<u>86-88</u>	<u>88-90</u>	<u>90-92</u>	<u>92-94</u>
Job Growth	-5.16%	-8.22%	-3.42%	10.32%	-1.59%	4.79%	21.26%
Population Growth	0.48%	-0.85%	0.86%	0.85%	-2.33%	-0.52%	1.47%

---

*Note:* Employment data are base on an individual's place of residence.

Source: Kansas Statistical Abstract 1992-1993, IPPBR, University of Kansas; Kansas Department of Human Resources; and, 1994 Population Estimates Branch, U.S. Bureau of the Census.

**Table 6e**  
**Population and Job Growth Rates**  
**Jefferson**

---

	<u>80-82</u>	<u>82-84</u>	<u>84-86</u>	<u>86-88</u>	<u>88-90</u>	<u>90-92</u>	<u>92-94</u>
Job Growth	-2.71%	-5.67%	9.22%	0.85%	2.62%	9.78%	9.83%
Population Growth	2.58%	1.92%	1.26%	4.97%	-5.89%	2.10%	3.59%

---

*Note:* Employment data are base on an individual's place of residence.

Source: Kansas Statistical Abstract 1992-1993, IPPBR, University of Kansas; Kansas Department of Human Resources; and, 1994 Population Estimates Branch, U.S. Bureau of the Census.

**Table 6f**  
**Population and Job Growth Rates**  
**Nemaha**

---

	<u>80-82</u>	<u>82-84</u>	<u>84-86</u>	<u>86-88</u>	<u>88-90</u>	<u>90-92</u>	<u>92-94</u>
Job Growth	3.06%	-7.30%	7.44%	1.00%	2.66%	4.33%	-12.00%
Population Growth	-0.10%	-0.89%	-0.90%	-1.82%	-3.28%	-0.33%	0.30%

---

*Note:* Employment data are base on an individual's place of residence.

Source: Kansas Statistical Abstract 1992-1993, IPPBR, University of Kansas; Kansas Department of Human Resources; and, 1994 Population Estimates Branch, U.S. Bureau of the Census.



---

**APPENDIX C**  
**NUMBER OF FIRMS BY NUMBER OF EMPLOYEES AND**  
**PERCENTAGE DISTRIBUTION OF FIRMS BY NUMBER OF EMPLOYEES**

---

**Atchison County**  
**Brown County**  
**Doniphan County**  
**Jackson County**  
**Jefferson County**  
**Nemaha County**

**Table 8a**  
**NUMBER OF FIRMS BY NUMBER OF EMPLOYEES**  
**ATCHISON COUNTY AND KANSAS: 1980, 1985, 1992**

<u>Employees</u>	<u>Atchison</u>			<u>Kansas</u>		
	<u>1980</u>	<u>1985</u>	<u>1992</u>	<u>1980</u>	<u>1985</u>	<u>1992</u>
0-19	306	329	317	48,394	58,347	59,240
20-99	31	28	38	5,689	6,234	7,171
100-499	8	7	7	842	840	1,102
500+	1	1	1	96	89	117
Total	346	365	363	55,021	65,510	67,630

*Note:* Employment data are based on an individual's place of work.

Source: U.S. Department of Commerce, Bureau of Economic Analysis, Kansas County Profile for Atchison County, KCCED/IPPBR, University of Kansas.

**Table 9a**  
**PERCENTAGE DISTRIBUTION OF FIRMS BY NUMBER OF EMPLOYEES**  
**ATCHISON COUNTY AND KANSAS: 1980, 1985, 1992**

<u>Employees</u>	<u>Atchison</u>			<u>Kansas</u>		
	<u>1980</u>	<u>1985</u>	<u>1992</u>	<u>1980</u>	<u>1985</u>	<u>1992</u>
0-19	88.4%	90.1%	87.3%	88.0%	89.1%	87.6%
20-99	9.0	7.7	10.5	10.3	9.5	10.6
100-499	2.3	1.9	1.9	1.5	1.3	1.6
500+	0.3	0.3	0.3	0.2	0.1	0.2

*Note:* Employment data are based on an individual's place of work.

Source: U.S. Department of Commerce, Bureau of Economic Analysis, Kansas County Profile for Atchison County, KCCED/IPPBR, University of Kansas.

**Table 8b**  
**NUMBER OF FIRMS BY NUMBER OF EMPLOYEES**  
**BROWN COUNTY AND KANSAS: 1980, 1985, 1992**

<u>Employees</u>	<b>Brown</b>			<b>Kansas</b>		
	<u>1980</u>	<u>1985</u>	<u>1992</u>	<u>1980</u>	<u>1985</u>	<u>1992</u>
0-19	253	265	256	48,394	58,347	59,240
20-99	26	25	25	5,689	6,234	7,171
100-499	3	2	3	842	840	1,102
500+	0	0	0	96	89	117
<b>Total</b>	<b>282</b>	<b>292</b>	<b>284</b>	<b>55,021</b>	<b>65,510</b>	<b>67,630</b>

*Note:* Employment data are based on an individual's place of work.

Source: U.S. Department of Commerce, Bureau of Economic Analysis, Kansas County Profile for Brown County, KCCED/IPPBR, University of Kansas.

**Table 9b**  
**PERCENTAGE DISTRIBUTION OF FIRMS BY NUMBER OF EMPLOYEES**  
**BROWN COUNTY AND KANSAS: 1980, 1985, 1992**

<u>Employees</u>	<b>Brown</b>			<b>Kansas</b>		
	<u>1980</u>	<u>1985</u>	<u>1992</u>	<u>1980</u>	<u>1985</u>	<u>1992</u>
0-19	89.7%	90.8%	90.1%	88.0%	89.1%	87.6%
20-99	9.2	8.6	8.8	10.3	9.5	10.6
100-499	1.1	0.7	1.1	1.5	1.3	1.6
500+	0.0	0.0	0.0	0.2	0.1	0.2

*Note:* Employment data are based on an individual's place of work.

Source: U.S. Department of Commerce, Bureau of Economic Analysis, Kansas County Profile for Brown County, KCCED/IPPBR, University of Kansas.

**Table 8c**  
**NUMBER OF FIRMS BY NUMBER OF EMPLOYEES**  
**DONIPHAN COUNTY AND KANSAS: 1980, 1985, 1992**

<u>Employees</u>	<b>Doniphan</b>			<b>Kansas</b>		
	<u>1980</u>	<u>1985</u>	<u>1992</u>	<u>1980</u>	<u>1985</u>	<u>1992</u>
0-19	151	154	141	48,394	58,347	59,240
20-99	12	8	6	5,689	6,234	7,171
100-499	1	4	4	842	840	1,102
500+	0	0	0	96	89	117
Total	164	166	151	55,021	65,510	67,630

*Note:* Employment data are based on an individual's place of work.

Source: U.S. Department of Commerce, Bureau of Economic Analysis, Kansas County Profile for Doniphan County, KCCED/IPPBR, University of Kansas.

**Table 9c**  
**PERCENTAGE DISTRIBUTION OF FIRMS BY NUMBER OF EMPLOYEES**  
**DONIPHAN COUNTY AND KANSAS: 1980, 1985, 1992**

<u>Employees</u>	<b>Doniphan</b>			<b>Kansas</b>		
	<u>1980</u>	<u>1985</u>	<u>1992</u>	<u>1980</u>	<u>1985</u>	<u>1992</u>
0-19	92.1%	92.8%	93.4%	88.0%	89.1%	87.6%
20-99	7.3	4.8	4.0	10.3	9.5	10.6
100-499	0.6	2.4	2.6	1.5	1.3	1.6
500+	0.0	0.0	0.0	0.2	0.1	0.2

*Note:* Employment data are based on an individual's place of work.

Source: U.S. Department of Commerce, Bureau of Economic Analysis, Kansas County Profile for Doniphan County, KCCED/IPPBR, University of Kansas.

**Table 8d**  
**NUMBER OF FIRMS BY NUMBER OF EMPLOYEES**  
**JACKSON COUNTY AND KANSAS: 1980, 1985, 1992**

<u>Employees</u>	<b>Jackson</b>			<b>Kansas</b>		
	<u>1980</u>	<u>1985</u>	<u>1992</u>	<u>1980</u>	<u>1985</u>	<u>1992</u>
0-19	181	212	229	48,394	58,347	59,240
20-99	16	14	12	5,689	6,234	7,171
100-499	0	0	1	842	840	1,102
500+	0	0	0	96	89	117
Total	197	226	242	55,021	65,510	67,630

*Note:* Employment data are based on an individual's place of work.

Source: U.S. Department of Commerce, Bureau of Economic Analysis, Kansas County Profile for Jackson County, KCCED/IPPBR, University of Kansas.

**Table 9d**  
**PERCENTAGE DISTRIBUTION OF FIRMS BY NUMBER OF EMPLOYEES**  
**JACKSON COUNTY AND KANSAS: 1980, 1985, 1992**

<u>Employees</u>	<b>Jackson</b>			<b>Kansas</b>		
	<u>1980</u>	<u>1985</u>	<u>1992</u>	<u>1980</u>	<u>1985</u>	<u>1992</u>
0-19	91.9%	93.8%	94.6%	88.0%	89.1%	87.6%
20-99	8.1	6.2	5.0	10.3	9.5	10.6
100-499	0.0	0.0	0.4	1.5	1.3	1.6
500+	0.0	0.0	0.0	0.2	0.1	0.2

*Note:* Employment data are based on an individual's place of work.

Source: U.S. Department of Commerce, Bureau of Economic Analysis, Kansas County Profile for Jackson County, KCCED/IPPBR, University of Kansas.

**Table 8e**  
**NUMBER OF FIRMS BY NUMBER OF EMPLOYEES**  
**JEFFERSON COUNTY AND KANSAS: 1980, 1985, 1992**

<u>Employees</u>	<b>Jefferson</b>			<b>Kansas</b>		
	<u>1980</u>	<u>1985</u>	<u>1992</u>	<u>1980</u>	<u>1985</u>	<u>1992</u>
0-19	203	260	290	48,394	58,347	59,240
20-99	10	6	9	5,689	6,234	7,171
100-499	2	1	1	842	840	1,102
500+	0	0	0	96	89	117
Total	215	267	300	55,021	65,510	67,630

*Note:* Employment data are based on an individual's place of work.

Source: U.S. Department of Commerce, Bureau of Economic Analysis, Kansas County Profile for Jefferson County, KCCED/IPPBR, University of Kansas.

**Table 9e**  
**PERCENTAGE DISTRIBUTION OF FIRMS BY NUMBER OF EMPLOYEES**  
**JEFFERSON COUNTY AND KANSAS: 1980, 1985, 1992**

<u>Employees</u>	<b>Jefferson</b>			<b>Kansas</b>		
	<u>1980</u>	<u>1985</u>	<u>1992</u>	<u>1980</u>	<u>1985</u>	<u>1992</u>
0-19	94.4%	97.4%	96.7%	88.0%	89.1%	87.6%
20-99	4.7	2.2	3.0	10.3	9.5	10.6
100-499	0.9	0.4	0.3	1.5	1.3	1.6
500+	0.0	0.0	0.0	0.2	0.1	0.2

*Note:* Employment data are based on an individual's place of work.

Source: U.S. Department of Commerce, Bureau of Economic Analysis, Kansas County Profile for Doniphan County, KCCED/IPPBR, University of Kansas.

**Table 8f**  
**NUMBER OF FIRMS BY NUMBER OF EMPLOYEES**  
**NEMAHA COUNTY AND KANSAS: 1980, 1985, 1992**

<u>Employees</u>	<b>Nemaha</b>			<b>Kansas</b>		
	<u>1980</u>	<u>1985</u>	<u>1992</u>	<u>1980</u>	<u>1985</u>	<u>1992</u>
0-19	303	311	336	48,394	58,347	59,240
20-99	18	17	27	5,689	6,234	7,171
100-499	2	3	7	842	840	1,102
500+	0	0	0	96	89	117
Total	323	331	370	55,021	65,510	67,630

*Note:* Employment data are based on an individual's place of work.

Source: U.S. Department of Commerce, Bureau of Economic Analysis, Kansas County Profile for Nemaha County, KCCED/IPPBR, University of Kansas.

**Table 9f**  
**PERCENTAGE DISTRIBUTION OF FIRMS BY NUMBER OF EMPLOYEES**  
**NEMAHA COUNTY AND KANSAS: 1980, 1985, 1992**

<u>Employees</u>	<b>Nemaha</b>			<b>Kansas</b>		
	<u>1980</u>	<u>1985</u>	<u>1992</u>	<u>1980</u>	<u>1985</u>	<u>1992</u>
0-19	93.8%	94.0%	90.8%	88.0%	89.1%	87.6%
20-99	5.6	5.1	5.1	10.3	9.5	10.6
100-499	0.6	0.9	0.9	1.5	1.3	1.6
500+	0.0	0.0	0.0	0.2	0.1	0.2

*Note:* Employment data are based on an individual's place of work.

Source: U.S. Department of Commerce, Bureau of Economic Analysis, Kansas County Profile for Nemaha County, KCCED/IPPBR, University of Kansas.

---

**APPENDIX D**  
**COMMUTING PATTERNS**

---

**Atchison County**  
**Brown County**  
**Doniphan County**  
**Jackson County**  
**Jefferson County**  
**Nemaha County**



## Commuting Patterns: NEKCRED Counties

Commuting patterns illustrate the movement of workers in and out of the county. The maps are based on information gathered from the 1990 U.S. Census. Highlights for each county follows:

### Atchison County (Maps A and B)

- In 1990 Mid-March employment for Atchison County was 4,724 (place of work). The employed Civilian Labor Force in 1990 was 7,056 (based on place of residence).
- 1,322 Atchison County residents were employed outside the county in 1990 (Map A).
- Thirty-eight percent of the residents (503) working outside of Atchison County commuted out of state to work.
- Thirty-five percent of the residents working outside Atchison County commuted to either Leavenworth County to the south (302 residents) or Brown County to the north (160 resident).
- 1,123 individuals from other Kansas counties and other states commuted to work in Atchison County in 1990 (Map B).
- Fifty-four percent, or 608 individuals, commuted to work in Atchison County from other states.
- Thirty-four percent of those who commuted in to Atchison County came from four surrounding counties: Doniphan, Leavenworth, Jefferson, and Brown.
- Atchison County experienced a net commuting **outflow** of 199 individuals (Outflow - Inflow =  $1,322 - 1,123 = 199$ ).

### Brown County (Maps C and D)

- In 1990 Mid-March employment for Brown County was 2,908 (place of work). The employed Civilian Labor Force in 1990 was 5,168 (based on place of residence).
- 766 Brown County residents were employed outside the county in 1990 (Map C).
- Over 51 percent of the residents (395 residents) working outside Brown County commuted from either Nemaha County (269 residents) to the west or from Doniphan County (126 residents) to the east.
- Fifteen percent (115 residents) worked outside of Kansas.
- 853 individuals from other Kansas counties and other states commuted to work in Brown County in 1990 (Map D).
- Nemaha (209 residents), Atchison (160 residents), and Doniphan (143 residents) counties accounted for 60 percent of the inflow.
- About 20 percent of the individuals commuting in to Brown County to work came from outside of Kansas.
- Brown County experienced a net commuting **inflow** of 87 individuals (Outflow - Inflow =  $766 - 853 = -87$ ).

### **Doniphan County (Maps E and F)**

- In 1990 Mid-March employment for Doniphan County was 1,620 (place of work). The employed Civilian Labor Force in 1990 was 3,794 (based on place of residence).
- 1,572 Doniphan County residents were employed outside the county in 1990 (Map E).
- 77 percent of the residents (1,205 residents) working outside Brown County commuted from other states.
- Brown (143 residents) and Nemaha (132 residents) counties supplied work for 17 percent of the residents commuting outside of Doniphan County.
- 1,276 individuals from other Kansas counties and other states commuted to work in Doniphan County in 1990 (Map F).
- About 87 percent of the individuals commuting into Doniphan County to work came from outside of Kansas.
- Brown County residents (125) accounted for about 10 percent of the individuals that commuted in to Doniphan County for work.
- Doniphan County experienced a net commuting **outflow** of 296 individuals (Outflow - Inflow =  $1,572 - 1,276 = 296$ ).

### **Jackson County (Maps G and H)**

- In 1990 Mid-March employment for Jackson County was 1,446 (place of work). The employed Civilian Labor Force in 1990 was 4,776 (based on place of residence).
- 2,651 Jackson County residents were employed outside the county in 1990 (Map G).
- 80 percent of the residents (2,111 residents) working outside Jackson County commuted to Shawnee County.
- Pottawatomie (201 residents) and Brown (102 residents) counties supplied jobs for 11 percent of those commuting outside of Jackson County to work.
- 432 individuals from other Kansas counties and other states commuted to work in Jackson County in 1990 (Map H).
- 34 percent of the individuals commuting into Jackson County to work came from Shawnee County.
- Jackson County experienced a net commuting **outflow** of 2,219 individuals (Outflow - Inflow =  $2,651 - 432 = 2,219$ ).

### Jefferson County (Maps I and J)

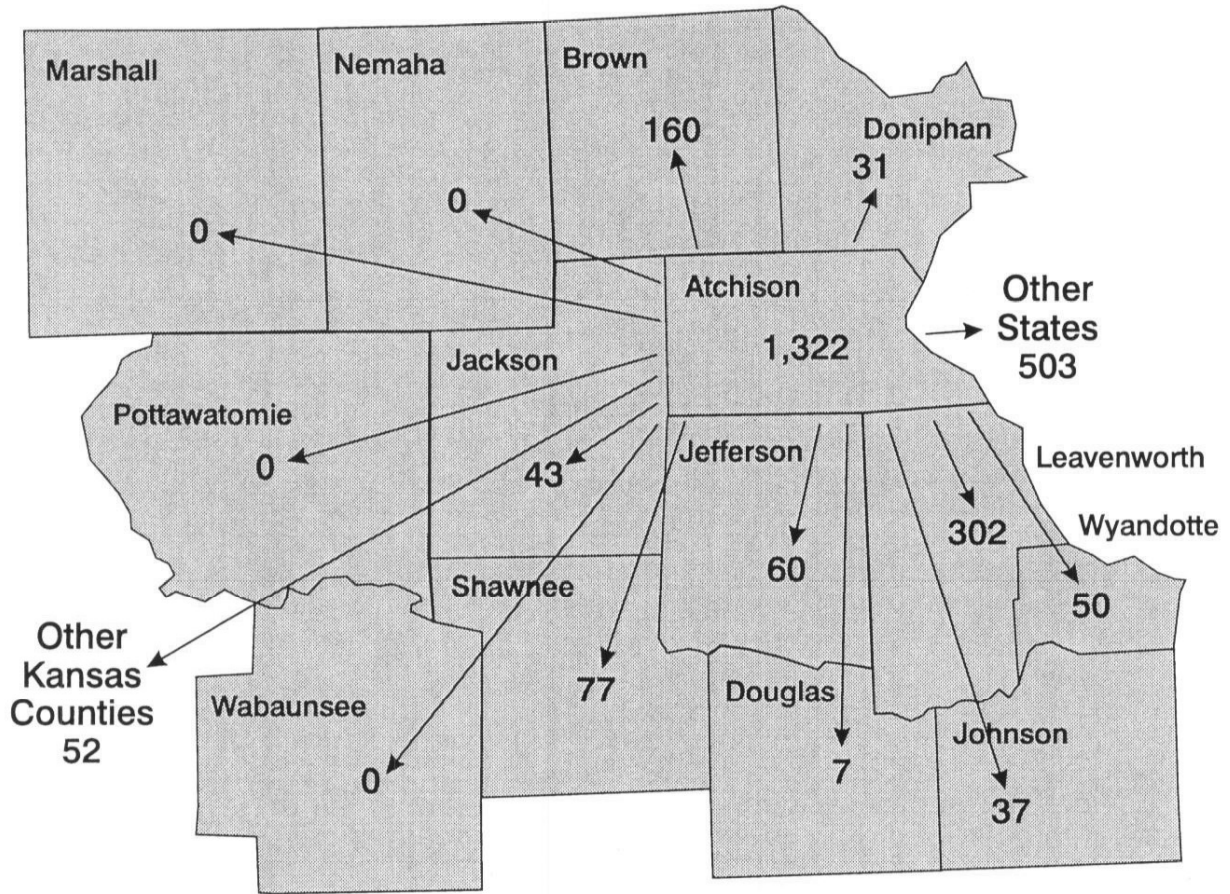
- In 1990 Mid-March employment for Jefferson County was 1,473 (place of work). The employed Civilian Labor Force in 1990 was 7,708 (based on place of residence).
- 4,715 Jefferson County residents were employed outside the county in 1990 (Map I).
- 78 percent of the residents working outside of Jefferson County commuted to either Shawnee (2,544 residents) or Douglas (1,074 residents) to work.
- 637 individuals from other Kansas counties and other states commuted to work in Jefferson County in 1990 (Map J).
- 64 percent of the individuals commuting in to work in Jefferson County came from either Douglas (214 individuals) or Shawnee (195 individuals) counties.
- Jefferson County experienced a net commuting **outflow** of 4,058 individuals (Outflow - Inflow =  $4,715 - 637 = 4,078$ ).

### Nemaha County (Maps K and L)

- In 1990 Mid-March employment for Nemaha County was 3,270 (place of work). The employed Civilian Labor Force in 1990 was 5,704 (based on place of residence).
- 657 Nemaha County residents were employed outside the county in 1990 (Map K).
- 49 percent of the residents working outside of Nemaha County commuted to either Brown (209 residents) or Pottawatomie (111 residents) counties to work.
- 730 individuals from other Kansas counties and other states commuted to work in Nemaha County in 1990 (Map L).
- 61 percent of the individuals commuting in to work in Nemaha County came from either Brown (69 individuals) or Marshall (176 individuals) counties.
- 23 percent of the individuals commuting in to work in Nemaha County came from counties in other states.
- Nemaha County experienced a net commuting **inflow** of 73 individuals (Outflow - Inflow =  $657 - 730 = -73$ ).

MAP A. ATCHISON COUNTY

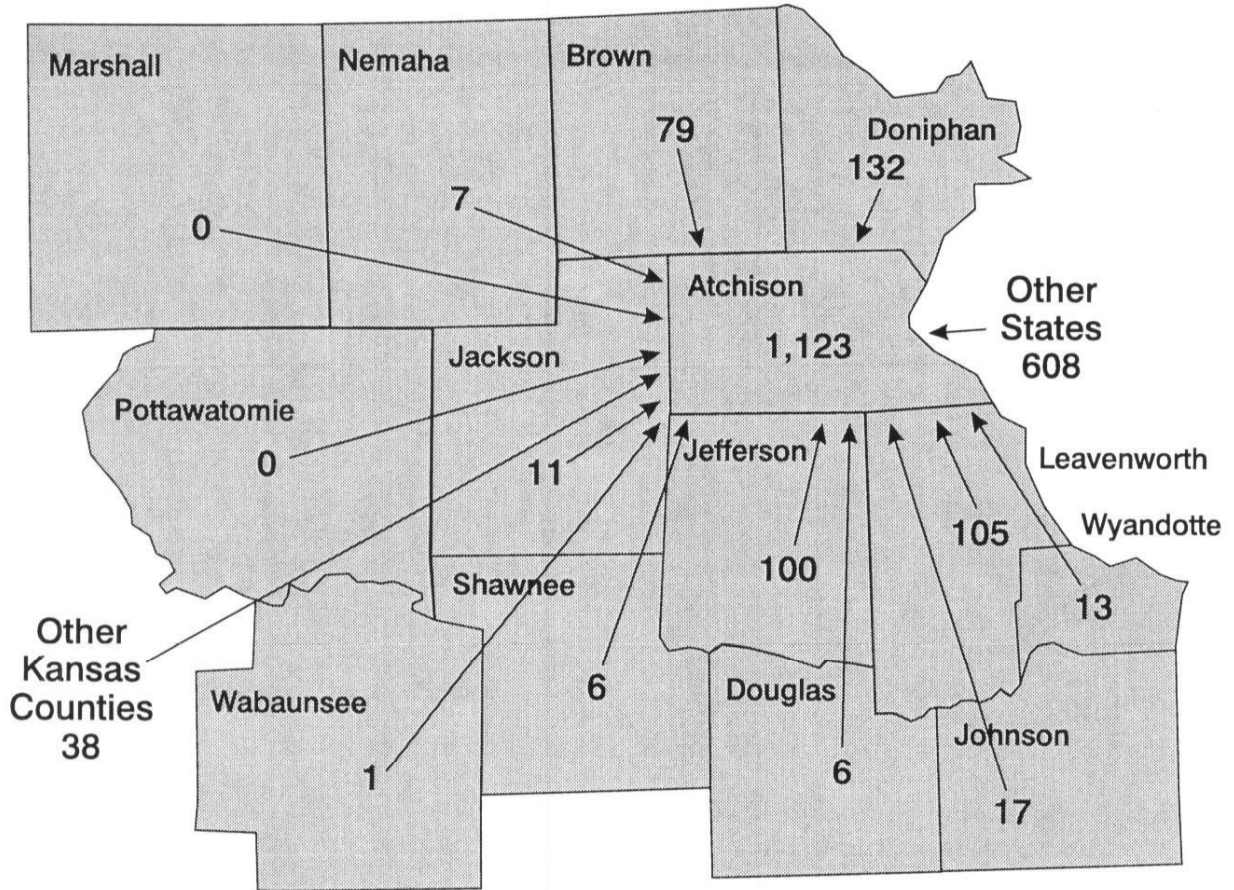
Daily Commuting Patterns:  
Atchison County Out-Flows



Source: U.S. Bureau of the Census: 1990.

Map B. Atchison County

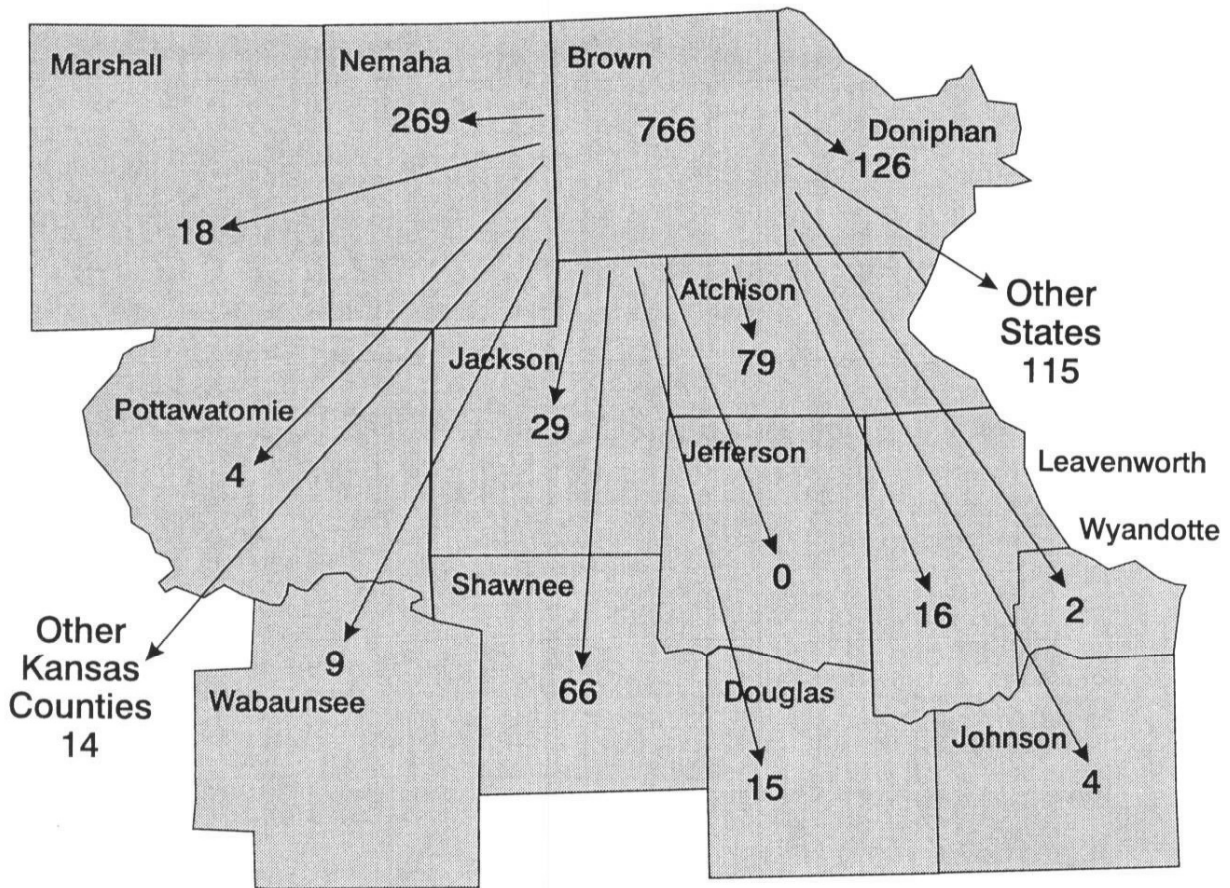
### Daily Commuting Patterns Atchison County In-Flows



Source: U.S. Bureau of the Census: 1990.

Map C. Brown County

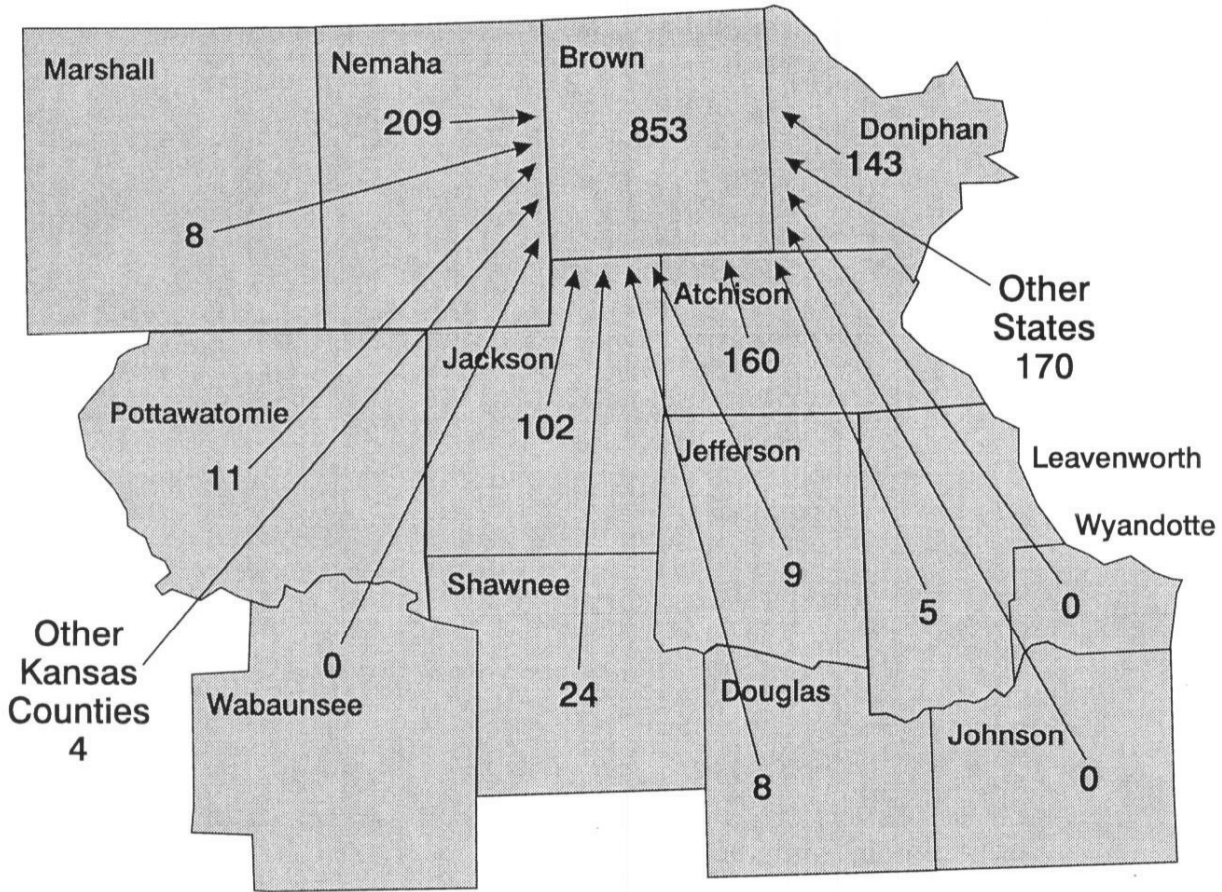
### Daily Commuting Patterns Brown County Out-Flows



Source: Bureau of the Census: 1990.

Map D. Brown County

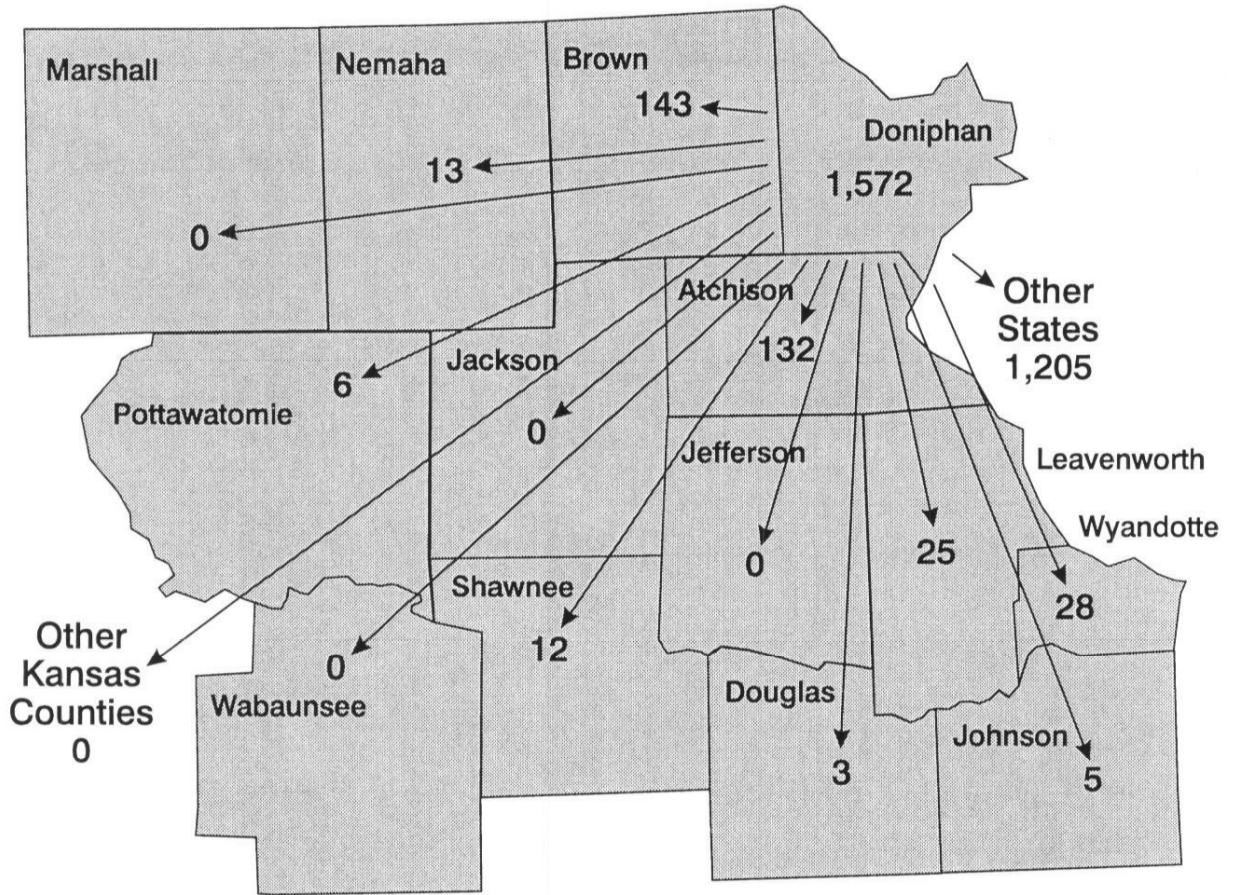
### Daily Commuting Patterns Brown County In-Flows



Source: U.S. Bureau of the Census: 1990.

Map E. Doniphan County

### Daily Commuting Patterns Doniphan County Out-Flows

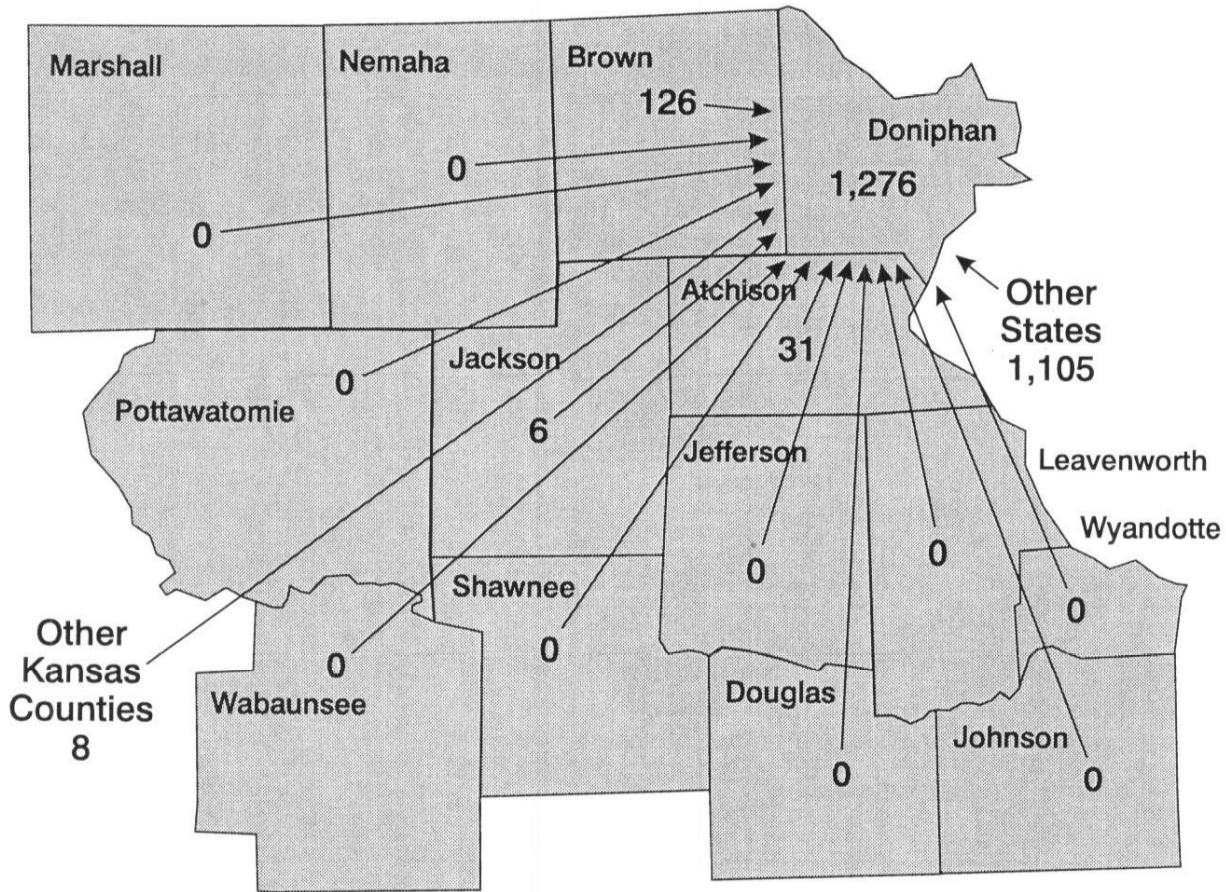


Source: I.S. Bureau of the Census: 1990.



Map F. Doniphan County

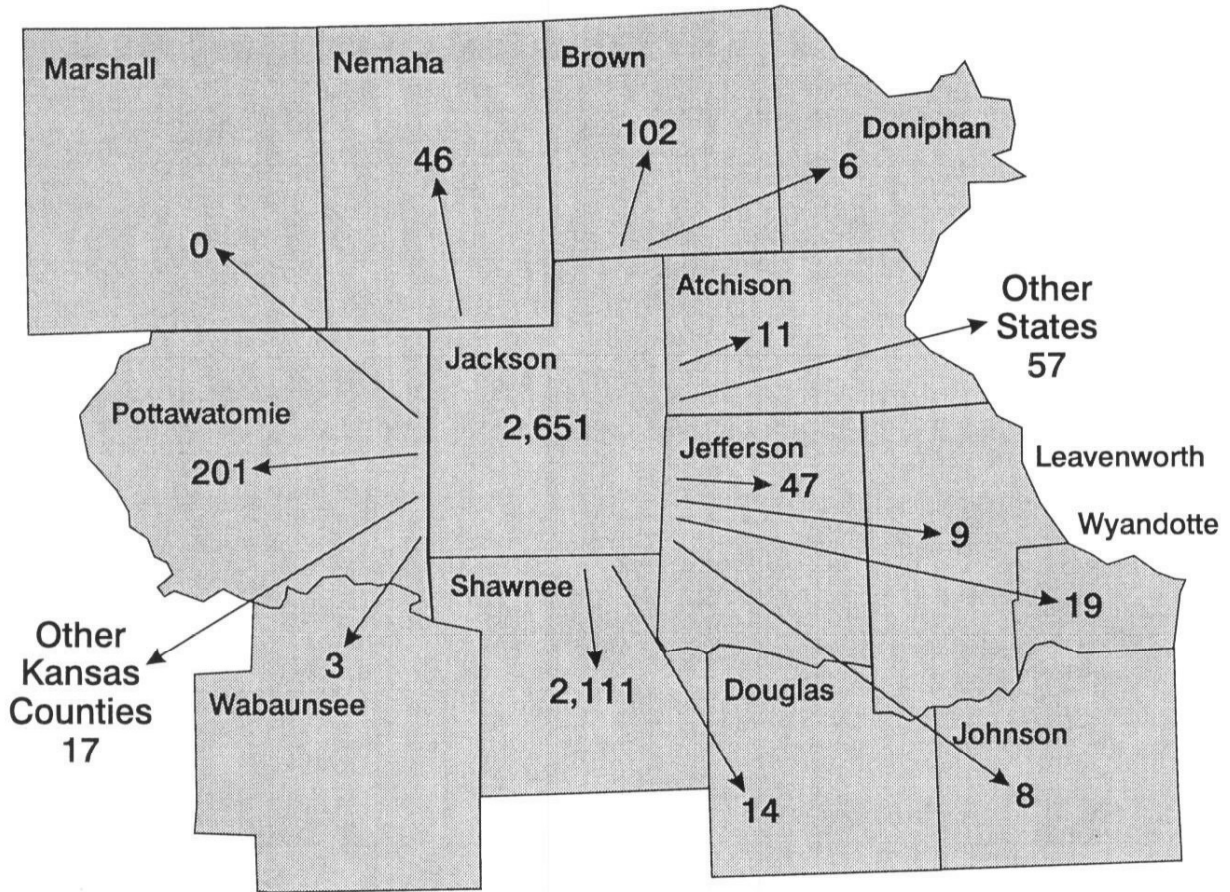
### Daily Commuting Patterns Doniphan County In-Flows



Source: U.S. Bureau of the Census: 1990.

Map G. Jackson County

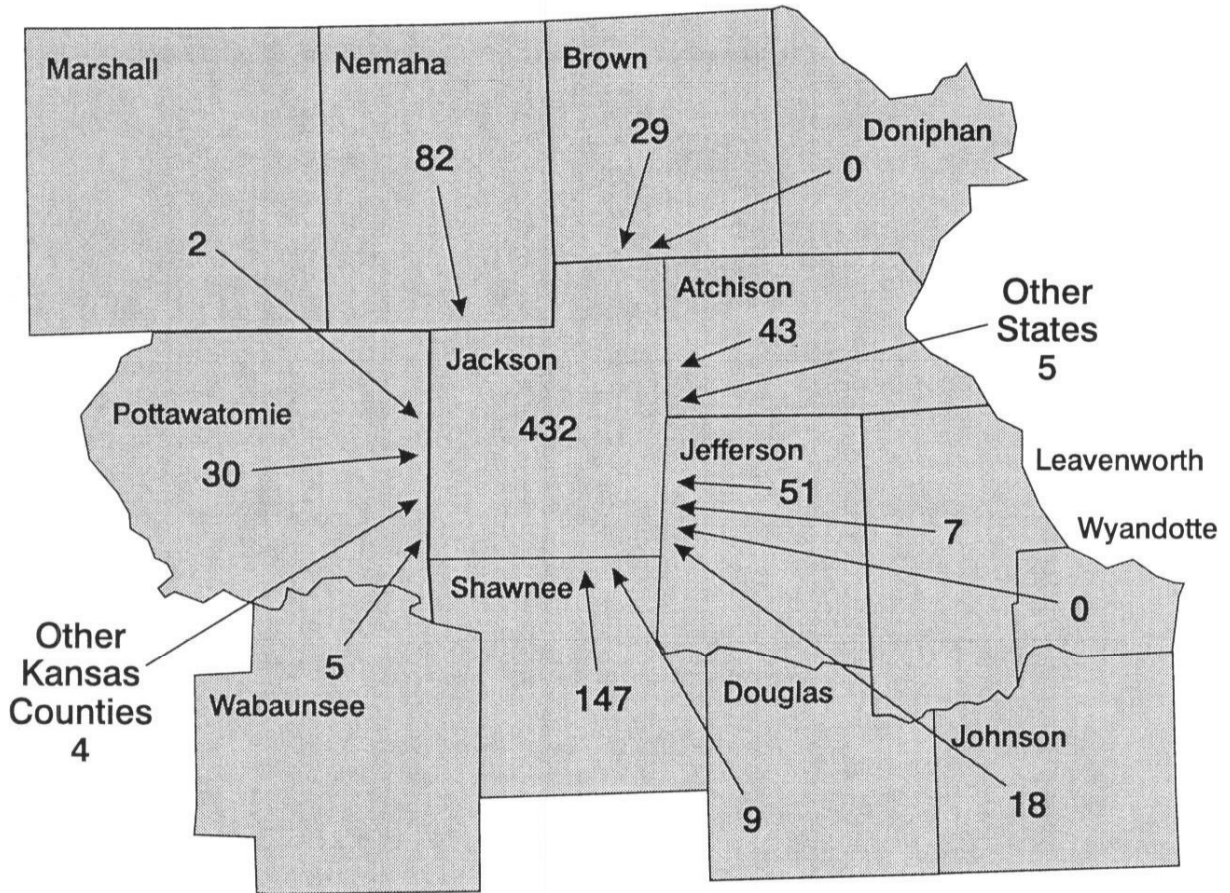
### Daily Commuting Patterns Jackson County Out-Flows



Source: U.S. Bureau of the Census: 1990.

Map H. Jackson County

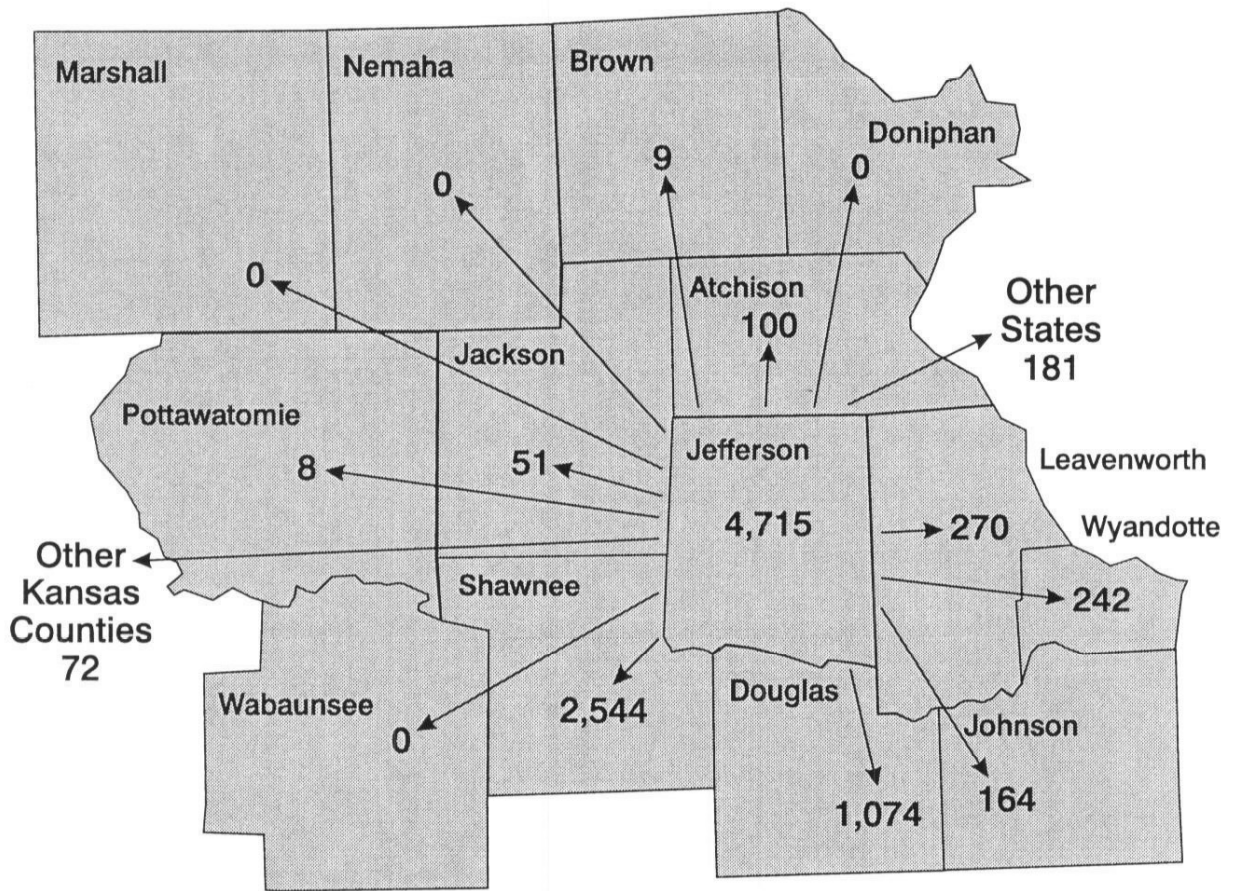
### Daily Commuting Patterns Jackson County In-Flows



Source: U.S. Bureau of the Census: 1990.

Map I. Jefferson County

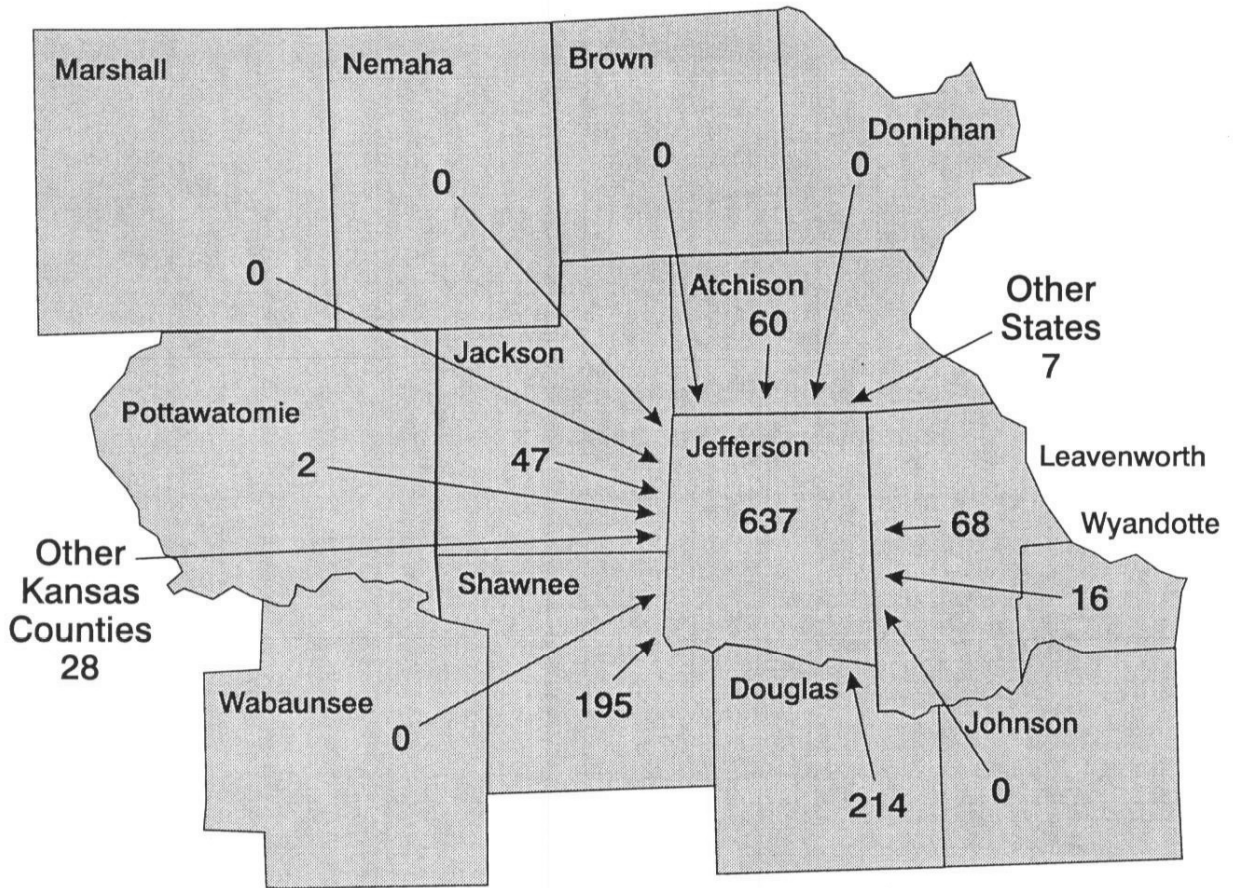
Daily Commuting Patterns  
Jefferson County Out-Flows



Source: Bureau of the Census: 1990.

Map J. Jefferson County

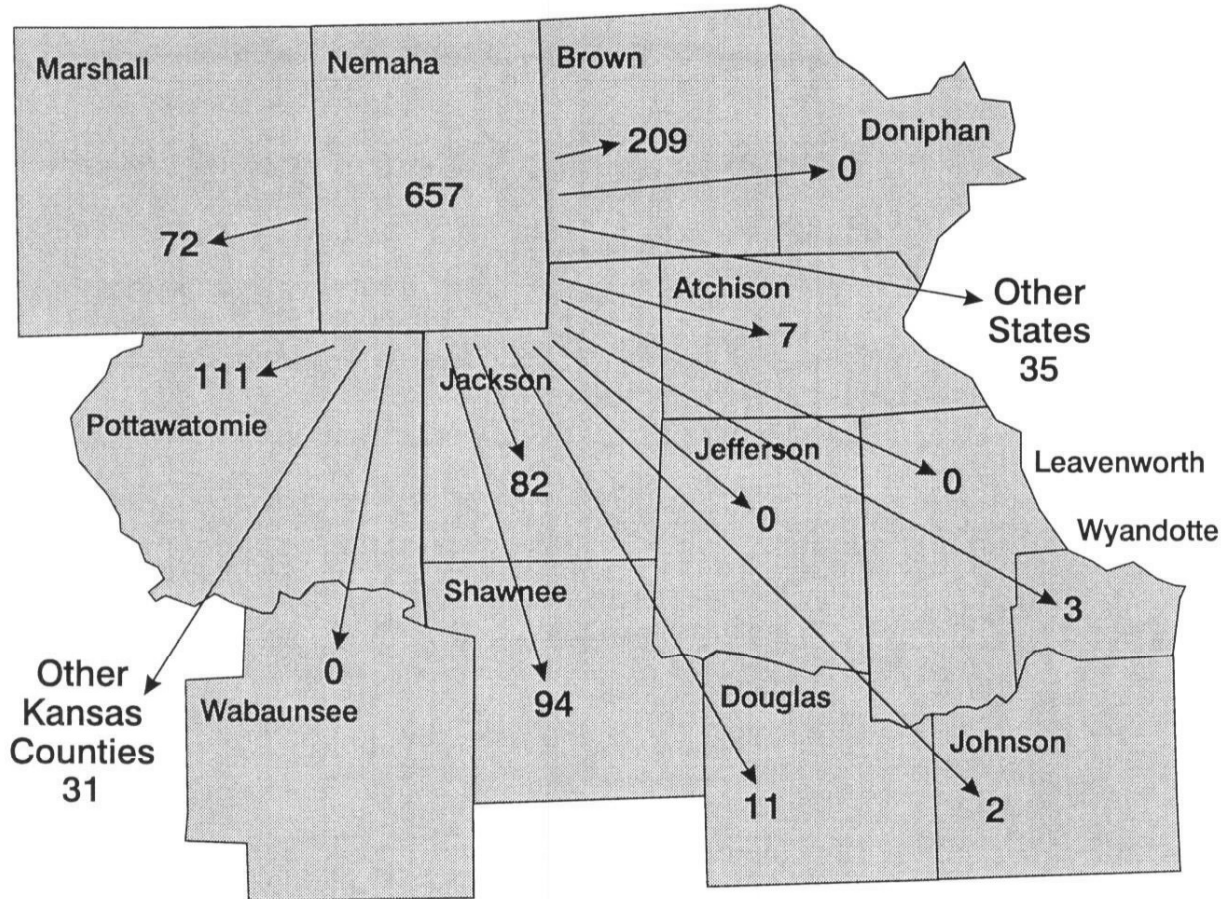
Daily Commuting Patterns  
Jefferson County In-Flows



Source: U.S. Bureau of the Census: 1990.

Map K. Nemaha County

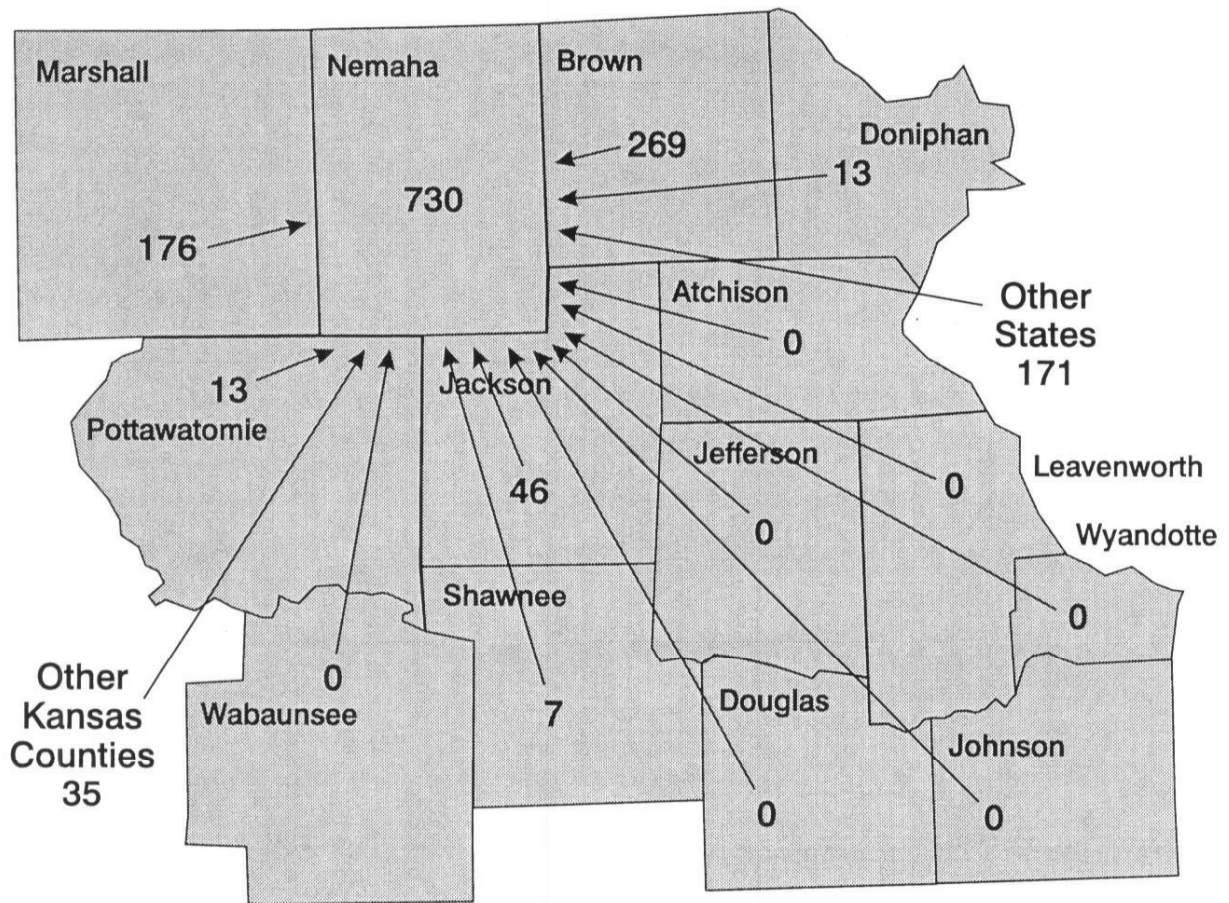
### Daily Commuting Patterns Nemaha County Out-Flows



Source: U.S. Bureau of the Census: 1990.

Map L. Nemaha County

### Daily Commuting Patterns Nemaha County In-Flows



Source: U.S. Bureau of the Census: 1990.

---

**APPENDIX E**  
**EMPLOYMENT LEVELS BY INDUSTRY AND GROWTH RATES**

---

**Atchison County**  
**Brown County**  
**Doniphan County**  
**Jackson County**  
**Jefferson County**  
**Nemaha County**



**Table 10b**  
**ATCHISON COUNTY**  
**EMPLOYMENT LEVELS BY INDUSTRY AND GROWTH RATES: 1983, 1989, 1993**  
**(IN THOUSANDS)**

<u>Industry</u>	<u>1983</u>	<u>1989</u>	<u>1993</u>	<u>83-89</u>	<u>89-93</u>
Ag. Services	24	66	199	175.0%	201.5%
Mining	A	A	48	N/A	N/A
Construction	276	291	307	5.4	5.5
Manufacturing	1,449	1,561	1,594	7.7	2.1
Transportation	299	A	197	N/A	N/A
Wholesale	A	472	455	N/A	-3.6
Retail	1,110	1,316	1,384	18.6	5.2
F.I.R.E.	337	332	342	-1.5	3.0
Services	1,652	1,951	2,205	18.1	13.0
Gov't Services	1,176	1,280	1,336	8.8	4.4
Subtotal-Non-Farm	6,909	7,548	8,067	9.2	6.9
Farm Employment	998	813	760	-18.5	-6.5
Total Employment	7,907	8,361	8,827	5.7	5.6

*Note:* Employment data are based on an individual's place of work.  
A = Reflects suppressed data.

Source: Bureau of Economic Analysis, Regional Economic Information System, Table CA25.

**Table 10c**  
**BROWN COUNTY**  
**EMPLOYMENT LEVELS BY INDUSTRY AND GROWTH RATES: 1983, 1989, 1993**  
**(IN THOUSANDS)**

<u>Industry</u>	<u>1985</u>	<u>1989</u>	<u>1993</u>	<u>83-89</u>	<u>89-93</u>
Ag. Services	40	99	101	147.5%	2.0%
Mining	32	A	A	N/A	N/A
Construction	175	180	232	2.9	28.9
Manufacturing	585	789	684	34.9	-13.3
Transportation	248	206	185	-16.9	-10.2
Wholesale	201	197	243	-2.0	23.4
Retail	735	763	701	3.8	-8.1
F.I.R.E.	286	501	297	75.2	-40.7
Services	1,346	1,379	1,579	2.5	14.5
Gov't Services	816	916	1,063	12.3	16.0
Subtotal-Non-Farm	4,464	5,035	5,089	12.8	1.1
Farm Employment	1,298	940	878	-27.6	-6.6
Total Employment	5,762	5,975	5,967	3.7	-0.1

*Note:* Employment data are based on an individual's place of work.  
A = Reflects suppressed data.

Source: Bureau of Economic Analysis, Regional Economic Information System, Table CA25.

**Table 10d**  
**DONIPHAN COUNTY**  
**EMPLOYMENT LEVELS BY INDUSTRY AND GROWTH RATES: 1983, 1989, 1993**  
**(IN THOUSANDS)**

<u>Industry</u>	<u>1983</u>	<u>1989</u>	<u>1993</u>	<u>83-89</u>	<u>89-93</u>
Ag. Services	50	69	109	38.0%	58.0%
Mining	13	A	A	N/A	N/A
Construction	128	189	131	47.7	-30.7
Manufacturing	352	530	757	50.6	42.8
Transportation	90	89	109	-1.1	22.5
Wholesale	478	433	437	-9.4	0.9
Retail	417	438	421	5.0	-3.9
F.I.R.E.	171	145	148	-15.2	2.1
Services	444	492	542	10.8	10.2
Gov't Services	690	774	768	12.2	-0.8
Subtotal-Non-Farm	2,833	3,163	3,422	11.6	8.2
Farm Employment	869	644	601	-25.9	-6.7
Total Employment	3,702	3,807	4,023	2.8	5.7

*Note:* Employment data are based on an individual's place of work.  
A= Reflects suppressed data.

Source: Bureau of Economic Analysis, Regional Economic Information System, Table CA25.

**Table 10e**  
**JACKSON COUNTY**  
**EMPLOYMENT LEVELS BY INDUSTRY AND GROWTH RATES: 1983, 1989, 1993**  
**(IN THOUSANDS)**

<u>Industry</u>	<u>1983</u>	<u>1989</u>	<u>1993</u>	<u>83-89</u>	<u>89-93</u>
Ag. Services	53	102	79	92.5%	-22.5%
Mining	A	A	A	N/A	N/A
Construction	281	325	383	15.7	17.8
Manufacturing	231	284	369	22.9	29.9
Transportation	131	132	95	0.8	-28.0
Wholesale	196	125	122	-36.2	-2.4
Retail	758	847	917	11.7	8.3
F.I.R.E.	180	222	284	23.3	27.9
Services	670	791	990	18.1	25.2
Gov't Services	761	902	1,002	18.5	11.1
Subtotal-Non-Farm	3,265	3,734	4,243	14.4	13.6
Farm Employment	1,445	1,213	1,137	-16.1	-6.3
Total Employment	4,710	4,947	5,380	5.0	8.8

*Note:* Employment data are based on an individual's place of work.  
A= Reflects suppressed data.

Source: Bureau of Economic Analysis, Regional Economic Information System, Table CA25.

**Table 10f**  
**JEFFERSON COUNTY**  
**EMPLOYMENT LEVELS BY INDUSTRY AND GROWTH RATES: 1983, 1989, 1993**  
**(IN THOUSANDS)**

<u>Industry</u>	<u>1983</u>	<u>1989</u>	<u>1993</u>	<u>83-89</u>	<u>89-93</u>
Ag. Services	102	80	A	-21.6%	N/A
Mining	71	79	A	11.3	N/A
Construction	332	315	432	-5.1	37.1
Manufacturing	54	69	94	27.8	36.2
Transportation	224	243	236	8.5	-2.9
Wholesale	116	105	94	-9.5	-10.5
Retail	601	627	729	4.3	16.3
F.I.R.E.	224	219	228	-2.2	4.1
Services	1,119	1,116	1,201	-0.3	7.6
Gov't Services	979	1,351	1,656	38.0	22.6
Subtotal-Non-Farm	3,822	4,204	4,928	10.0	17.2
Farm Employment	1,197	1,147	1,075	-13.3	-6.3
Total Employment	5,145	5,351	6,003	4.0	12.2

*Note:* Employment data are based on an individual's place of work.  
A= Reflects suppressed data.

Source: Bureau of Economic Analysis, Regional Economic Information System, Table CA25.

**Table 10g**  
**NEMAHA COUNTY**  
**EMPLOYMENT LEVELS BY INDUSTRY AND GROWTH RATES: 1983, 1989, 1993**  
**(IN THOUSANDS)**

<u>Industry</u>	<u>1983</u>	<u>1989</u>	<u>1993</u>	<u>83-89</u>	<u>89-93</u>
Ag. Services	130	123	A	-5.4%	N/A
Mining	24	30	A	25.0	N/A
Construction	208	224	211	7.7	-5.8
Manufacturing	504	687	849	36.3	23.6
Transportation	411	527	508	28.2	-3.6
Wholesale	240	311	236	29.6	-24.1
Retail	861	797	864	-7.4	8.4
F.I.R.E.	247	186	194	-24.7	4.3
Services	1,047	1,091	1,324	4.2	21.4
Gov't Services	731	787	807	7.7	2.5
Subtotal-Non-Farm	4,403	4,763	5,148	8.2	8.1
Farm Employment	1,699	1,421	1,328	-16.4	-6.5
Total Employment	6,102	6,184	6,476	1.3	4.7

*Note:* Employment data are based on an individual's place of work.  
A= Reflects suppressed data.

Source: Bureau of Economic Analysis, Regional Economic Information System, Table CA25.

---

**APPENDIX F**  
**NUMBER OF FIRMS BY INDUSTRY**

---

**Atchison County**  
**Brown County**  
**Doniphan County**  
**Jackson County**  
**Jefferson County**  
**Nemaha County**

**Table 11a**  
**NUMBER OF FIRMS BY INDUSTRY**  
**ATCHISON COUNTY: 1980, 1985, 1992**

---

	<b>Atchison</b>		
<u>Industry</u>	<u>1980</u>	<u>1985</u>	<u>1992</u>
Ag. Services	3	3	3
Mining	1	2	3
Construction	35	35	34
Manufacturing	22	23	22
Transportation	7	8	14
Wholesale	31	26	22
Retail	103	107	97
F.I.R.E.	35	30	41
Services	95	109	124
Unclassified	14	22	3
 Total Firms	 346	 365	 363

---

Source: County Business Patterns: Atchison County.



**Table 11b**  
**NUMBER OF FIRMS BY INDUSTRY**  
**BROWN COUNTY: 1980, 1985, 1992**

---

<u>Industry</u>	<b>Brown</b>		
	<u>1980</u>	<u>1985</u>	<u>1992</u>
Ag. Services	4	6	5
Mining	0	1	A
Construction	29	22	26
Manufacturing	16	15	16
Transportation	18	18	17
Wholesale	32	31	29
Retail	75	74	65
F.I.R.E.	23	22	29
Services	70	76	95
Unclassified	15	27	2
 Total Firms	 292	 292	 284

---

A = Reflects suppressed data.  
Source: County Business Patterns: Brown County.

**Table 11c**  
**NUMBER OF FIRMS BY INDUSTRY**  
**DONIPHAN COUNTY: 1980, 1985, 1992**

---

	<b>Doniphan</b>		
<u>Industry</u>	<u>1980</u>	<u>1985</u>	<u>1992</u>
Ag. Services	1	1	4
Mining	1	1	A
Construction	16	15	12
Manufacturing	8	9	11
Transportation	13	8	14
Wholesale	19	22	17
Retail	47	45	37
F.I.R.E.	16	17	13
Services	36	32	40
Unclassified	7	16	3
Total Firms	164	166	151

---

A = Reflects suppressed data.

Source: County Business Patterns: Doniphan County.

**Table 11d**  
**NUMBER OF FIRMS BY INDUSTRY**  
**JACKSON COUNTY: 1980, 1985, 1992**

---

	<b>Jackson</b>		
<u>Industry</u>	<u>1980</u>	<u>1985</u>	<u>1992</u>
Ag. Services	2	2	2
Mining	1	1	1
Construction	27	31	36
Manufacturing	10	7	11
Transportation	11	11	13
Wholesale	21	19	17
Retail	62	70	67
F.I.R.E.	13	14	23
Services	33	48	68
Unclassified	17	23	3
 Total Firms	 197	 226	 242

---

A = Reflects suppressed data.

Source: County Business Patterns: Jackson County.

**Table 11e**  
**NUMBER OF FIRMS BY INDUSTRY**  
**JEFFERSON COUNTY: 1980, 1985, 1992**

---

<u>Industry</u>	<b>Jefferson</b>		
	<u>1980</u>	<u>1985</u>	<u>1992</u>
Ag. Services	3	4	7
Mining	3	5	5
Construction	34	33	36
Manufacturing	8	8	13
Transportation	15	13	16
Wholesale	12	17	13
Retail	67	67	91
F.I.R.E.	15	12	18
Services	49	70	95
Unclassified	9	38	6
Total Firms	215	267	300

---

Source: County Business Patterns: Jefferson County.

**Table 11f**  
**NUMBER OF FIRMS BY INDUSTRY**  
**NEMAHA COUNTY: 1980, 1985, 1992**

---

<u>Industry</u>	<b>Nemaha</b>		
	<u>1980</u>	<u>1985</u>	<u>1992</u>
Ag. Services	8	5	12
Mining	0	0	2
Construction	22	19	29
Manufacturing	15	21	21
Transportation	33	30	30
Wholesale	38	35	30
Retail	103	102	98
F.I.R.E.	15	17	30
Services	72	74	104
Unclassified	17	28	14
 Total Firms	 323	 331	 370

---

Source: County Business Patterns: Nemaha County.

---

**APPENDIX G**  
**PER CAPITA PERSONAL INCOME**

---

**Atchison County**  
**Brown County**  
**Doniphan County**  
**Jackson County**  
**Jefferson County**  
**Nemaha County**

**Table 16a**  
**ATCHISON COUNTY AND KANSAS**  
**PER CAPITA PERSONAL INCOME**  
**1980-1993**

	<u>Income</u>		<u>Growth Rates</u>		<u>Income Ratio:</u>
	<u>Atchison</u>	<u>Kansas</u>	<u>Atchison</u>	<u>Kansas</u>	<u>Atchison to Kansas</u>
1980	\$7,781	\$9,829	--	--	79.2%
1981	8,851	11,034	13.8%	12.3%	80.2
1982	9,240	11,760	4.4	6.6	78.6
1983	9,925	12,192	-3.4	3.7	73.2
1984	10,120	13,114	13.4	7.6	77.2
1985	11,273	13,847	11.4	5.6	81.4
1986	11,214	14,472	-0.5	4.5	77.5
1987	11,850	15,017	5.7	3.8	78.9
1988	12,502	15,748	5.5	4.9	79.4
1989	13,198	16,399	5.6	4.1	80.5
1990	14,023	17,639	6.3	7.6	79.5
1991	14,540	18,290	3.7	3.7	79.5
1992	16,059	19,387	10.4	6.0	82.8
1993	16,038	19,849	-0.1	2.4	80.8

Source: University of Kansas, Kansas Center for Community Economic Development, "Kansas County Profile, 1994", Bureau of Economic Analysis, Regional Economic Information System, Table CA5, Local Area Personal Income 1969-1992, U.S. Department of Commerce, BEA.

**Table 16b**  
**BROWN COUNTY AND KANSAS**  
**PER CAPITA PERSONAL INCOME**  
**1980-1993**

	<u>Income</u>		<u>Growth Rates</u>		<u>Income Ratio:</u>
	<u>Brown</u>	<u>Kansas</u>	<u>Brown</u>	<u>Kansas</u>	<u>Brown to Kansas</u>
1980	\$7,150	\$9,829	--	--	72.7%
1981	9,359	11,034	30.9%	12.3%	84.8
1982	9,894	11,760	5.7	6.6	84.1
1983	9,036	12,192	-8.7	3.7	74.1
1984	10,322	13,114	14.2	7.6	78.7
1985	12,641	13,847	22.5	5.6	91.3
1986	12,213	14,472	-3.4	4.5	84.4
1987	12,987	15,017	6.3	3.8	86.5
1988	12,664	15,748	-2.5	4.9	80.4
1989	13,448	16,399	6.2	4.1	82.0
1990	14,805	17,639	10.1	7.6	83.9
1991	15,168	18,290	2.5	3.7	82.9
1992	16,395	19,387	8.1	6.0	84.6
1993	16,518	19,849	0.8	2.4	83.2

Source: University of Kansas, Kansas Center for Community Economic Development, "Kansas County Profile, 1994", Bureau of Economic Analysis, Regional Economic Information System, Table CA5, Local Area Personal Income 1969-1992, U.S. Department of Commerce, BEA.



**Table 16c**  
**DONIPHAN COUNTY AND KANSAS**  
**PER CAPITA PERSONAL INCOME**  
**1980-1993**

	<u>Income</u>		<u>Growth Rates</u>		<u>Income Ratio:</u>
	<u>Doniphan</u>	<u>Kansas</u>	<u>Doniphan</u>	<u>Kansas</u>	<u>Doniphan to Kansas</u>
1980	\$6,841	\$9,829	--	--	69.6%
1981	8,802	11,034	28.7%	12.3%	79.8
1982	9,931	11,760	12.8	6.6	84.4
1983	8,649	12,192	-12.9	3.7	70.9
1984	10,229	13,114	18.3	7.6	78.0
1985	12,731	13,847	24.5	5.6	91.9
1986	12,584	14,472	-1.2	4.5	87.0
1987	12,832	15,017	2.0	3.8	85.4
1988	12,901	15,748	0.5	4.9	81.9
1989	13,308	16,399	3.2	4.1	81.2
1990	14,602	17,639	9.7	7.6	82.8
1991	16,160	18,290	10.7	3.7	88.4
1992	17,406	19,387	7.7	6.0	89.8
1993	16,648	19,849	-4.4	2.4	83.9

Source: University of Kansas, Kansas Center for Community Economic Development, "Kansas County Profile, 1994", Bureau of Economic Analysis, Regional Economic Information System, Table CA5, Local Area Personal Income 1969-1992, U.S. Department of Commerce, BEA.

**Table 16d**  
**JACKSON COUNTY AND KANSAS**  
**PER CAPITA PERSONAL INCOME**  
**1980-1993**

	<u>Income</u>		<u>Growth Rates</u>		<u>Income Ratio:</u>
	<u>Jackson</u>	<u>Kansas</u>	<u>Jackson</u>	<u>Kansas</u>	<u>Jackson to Kansas</u>
1980	\$7,563	\$9,829	--	--	76.9%
1981	8,983	11,034	18.8%	12.3%	81.4
1982	9,427	11,760	4.9	6.6	80.2
1983	9,314	12,192	-1.2	3.7	76.4
1984	10,725	13,114	15.1	7.6	81.8
1985	12,380	13,847	15.4	5.6	89.4
1986	12,493	14,472	0.9	4.5	86.3
1987	12,621	15,017	1.0	3.8	84.0
1988	13,576	15,748	7.6	4.9	86.2
1989	14,405	16,399	6.1	4.1	87.8
1990	15,462	17,639	7.3	7.6	87.7
1991	15,395	18,290	-0.4	3.7	84.2
1992	17,113	19,387	11.2	6.0	88.3
1993	17,424	19,849	1.8	2.4	87.8

Source: University of Kansas, Kansas Center for Community Economic Development, "Kansas County Profile, 1994", Bureau of Economic Analysis, Regional Economic Information System, Table CA5, Local Area Personal Income 1969-1992, U.S. Department of Commerce, BEA.

**Table 16e**  
**JEFFERSON COUNTY AND KANSAS**  
**PER CAPITA PERSONAL INCOME**  
**1980-1993**

	<u>Income</u>		<u>Growth Rates</u>		<u>Income Ratio:</u>
	<u>Jefferson</u>	<u>Kansas</u>	<u>Jefferson</u>	<u>Kansas</u>	<u>Jefferson to Kansas</u>
1980	\$8,454	\$9,829	--	--	86.0%
1981	9,873	11,034	16.8%	12.3%	89.5
1982	10,468	11,760	6.0	6.6	89.0
1983	10,292	12,192	-1.7	3.7	84.4
1984	11,352	13,114	10.3	7.6	86.6
1985	13,108	13,847	15.5	5.6	94.7
1986	13,317	14,472	1.6	4.5	92.0
1987	13,684	15,017	2.8	3.8	91.1
1988	13,710	15,748	0.2	4.9	87.1
1989	14,565	16,399	6.2	4.1	88.8
1990	15,737	17,639	8.0	7.6	89.2
1991	16,031	18,290	1.9	3.7	87.6
1992	17,393	19,387	8.5	6.0	89.7
1993	17,179	19,849	-1.2	2.4	86.5

Source: University of Kansas, Kansas Center for Community Economic Development, "Kansas County Profile, 1994", Bureau of Economic Analysis, Regional Economic Information System, Table CA5, Local Area Personal Income 1969-1992, U.S. Department of Commerce, BEA.

**Table 16f**  
**NEMAHA COUNTY AND KANSAS**  
**PER CAPITA PERSONAL INCOME**  
**1980-1993**

	<u>Income</u>		<u>Growth Rates</u>		<u>Income Ratio:</u>
	<u>Nemaha</u>	<u>Kansas</u>	<u>Nemaha</u>	<u>Kansas</u>	<u>Nemaha to Kansas</u>
1980	\$7,091	\$9,829	--	--	72.1%
1981	9,067	11,034	27.9%	12.3%	82.2
1982	10,021	11,760	10.5	6.6	85.2
1983	9,537	12,192	-4.8	3.7	78.2
1984	10,348	13,114	8.5	7.6	78.9
1985	12,226	13,847	18.1	5.6	88.3
1986	13,315	14,472	8.9	4.5	92.0
1987	14,113	15,017	6.0	3.8	94.0
1988	14,401	15,748	2.0	4.9	91.4
1989	14,843	16,399	3.1	4.1	90.5
1990	17,202	17,639	15.9	7.6	97.5
1991	17,879	18,290	3.9	3.7	97.8
1992	19,035	19,387	6.5	6.0	98.2
1993	17,972	19,849	-5.6	2.4	90.5

Source: University of Kansas, Kansas Center for Community Economic Development, "Kansas County Profile, 1994", Bureau of Economic Analysis, Regional Economic Information System, Table CA5, Local Area Personal Income 1969-1992, U.S. Department of Commerce, BEA.

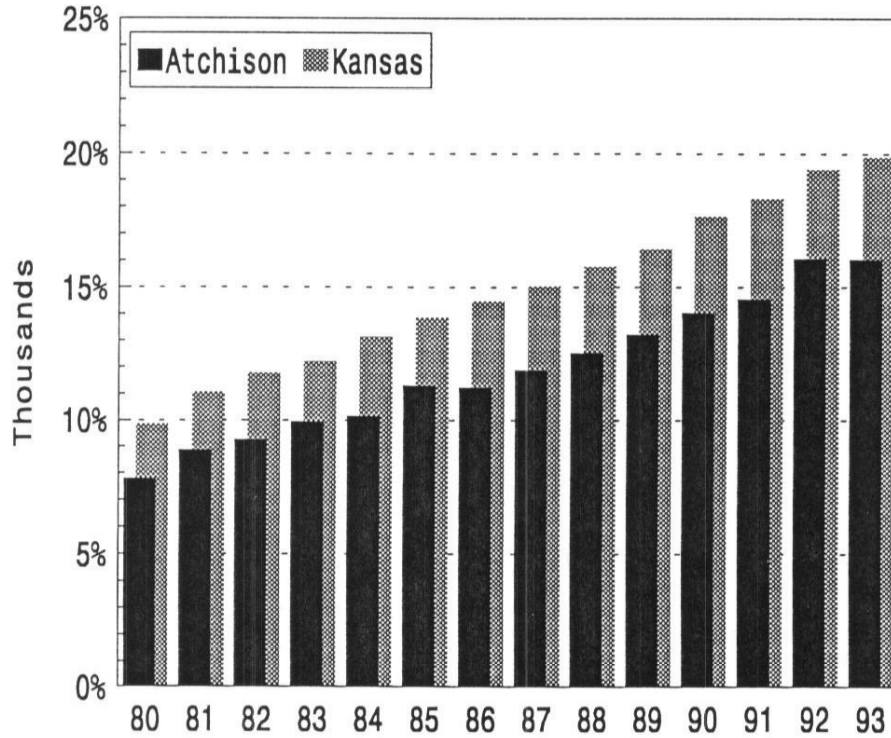
---

**APPENDIX H**  
**PER CAPITA PERSONAL INCOME - FIGURES**

---

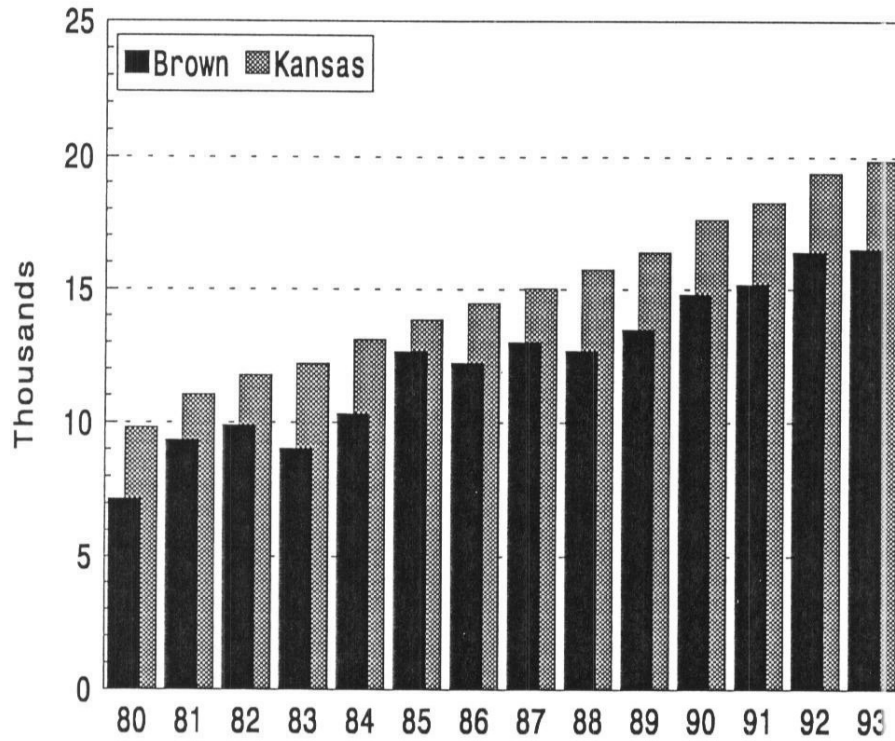
**Atchison County**  
**Brown County**  
**Doniphan County**  
**Jackson County**  
**Jefferson County**  
**Nemaha County**

**Figure 4a**  
**PER CAPITA PERSONAL INCOME**  
**ATCHISON COUNTY AND KANSAS**



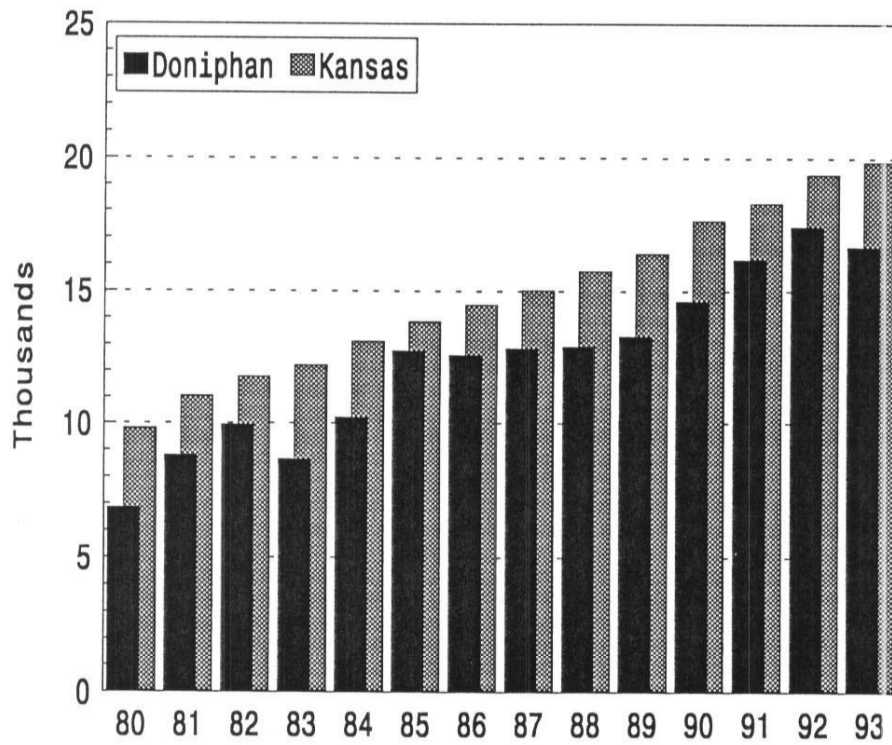
Source: University of Kansas, Kansas Center for Community Economic Development, "Kansas County Profile, 1994", Bureau of Economic Analysis, Regional Economic Information System, Table CA5, Local Area Personal Income 1969-1993, U.S. Department of Commerce, BEA.

**Figure 4b**  
**PER CAPITA PERSONAL INCOME**  
**BROWN COUNTY AND KANSAS**



Source: University of Kansas, Kansas Center for Community Economic Development, "Kansas County Profile, 1994", Bureau of Economic Analysis, Regional Economic Information System, Table CA5, Local Area Personal Income 1969-1993, U.S. Department of Commerce, BEA.

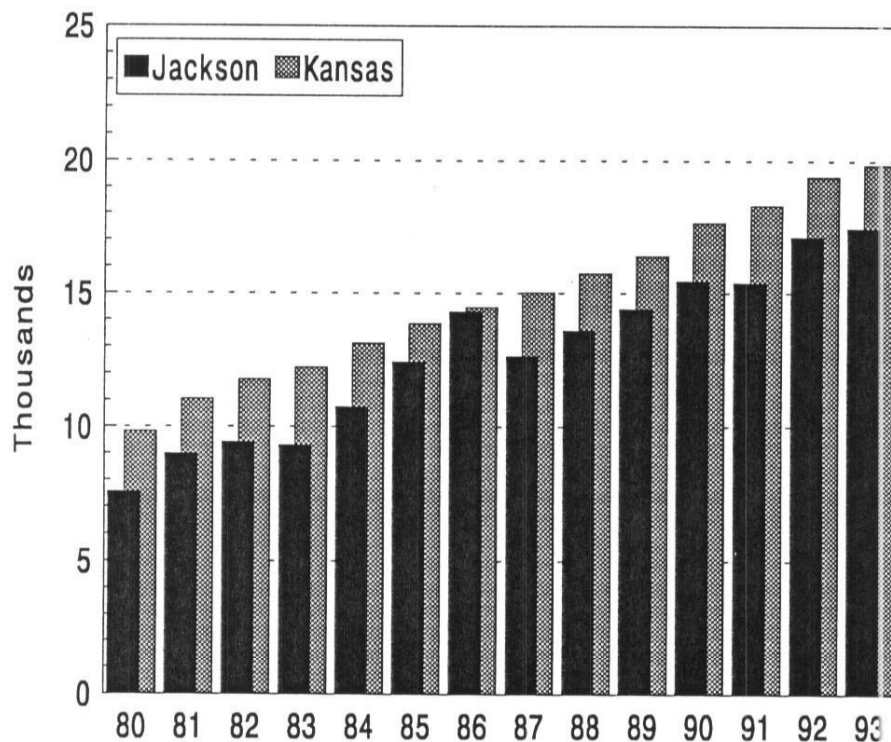
**Figure 4c**  
**PER CAPITA PERSONAL INCOME**  
**DONIPHAN COUNTY AND KANSAS**



Source: University of Kansas, Kansas Center for Community Economic Development, "Kansas County Profile, 1994", Bureau of Economic Analysis, Regional Economic Information System, Table CA5, Local Area Personal Income 1969-1993, U.S. Department of Commerce, BEA.

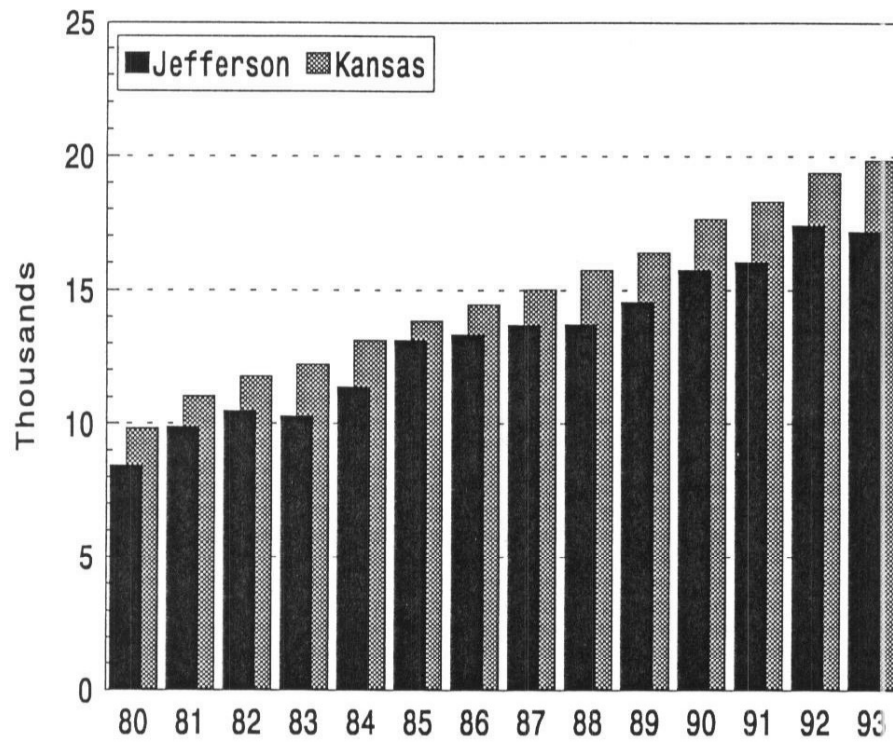


**Figure 4d**  
**PER CAPITA PERSONAL INCOME**  
**JACKSON COUNTY AND KANSAS**



Source: University of Kansas, Kansas Center for Community Economic Development, "Kansas County Profile, 1994", Bureau of Economic Analysis, Regional Economic Information System, Table CA5, Local Area Personal Income 1969-1993, U.S. Department of Commerce, BEA.

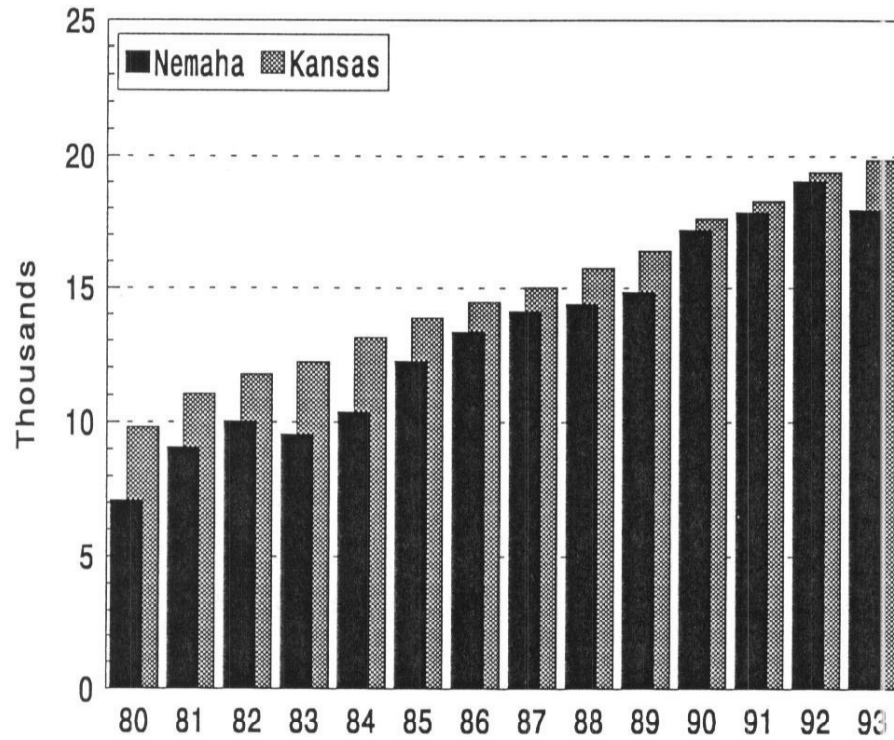
Figure 4e  
PER CAPITA PERSONAL INCOME  
JEFFERSON COUNTY AND KANSAS



Source: University of Kansas, Kansas Center for Community Economic Development, "Kansas County Profile, 1994", Bureau of Economic Analysis, Regional Economic Information System, Table CA5, Local Area Personal Income 1969-1993, U.S. Department of Commerce, BEA.

**Figure 4f**  
**PER CAPITA PERSONAL INCOME**  
**NEMAHA COUNTY AND KANSAS**

---



Source: University of Kansas, Kansas Center for Community Economic Development, "Kansas County Profile, 1994", Bureau of Economic Analysis, Regional Economic Information System, Table CA5, Local Area Personal Income 1969-1993, U.S. Department of Commerce, BEA.

---

**APPENDIX I**  
**TRANSFER PAYMENTS**

---

**Atchison County**  
**Brown County**  
**Doniphan County**  
**Jackson County**  
**Jefferson County**  
**Nemaha County**

Table 18a  
 BREAKOUT OF TRANSFER PAYMENTS  
 NEKCRED COUNTIES AND KANSAS  
 1987-1993

NEKCRED	1987	1988	1989	1990	1991	1992	1993
Ret. & disab. insurance benefit payments	97,625	103,132	109,254	116,038	124,267	131,308	136,653
Medical payments	41,821	45,170	52,206	61,354	70,130	81,023	90,722
Income maintenance benefit payments	8,489	9,392	10,188	10,757	11,717	13,790	14,660
Unemployment insurance benefit payments	6,768	4,699	4,906	5,119	6,465	8,730	8,637
Veterans benefit payments	5,150	5,170	5,257	5,498	5,735	6,057	6,128
Fed educ. & trng. ass't. pay (excl. vets)	1,082	1,219	1,871	1,722	1,504	1,636	1,556
Other payments to individuals	325	333	673	283	200	153	302
Government payments to individuals	161,351	169,158	184,454	200,863	220,145	242,813	258,748
Payments to nonprofit institutions	4,050	4,145	4,203	4,320	5,394	5,877	5,756
Business payments to individuals	4,210	4,124	4,145	4,206	4,120	4,357	4,174
Total Transfer Payments	169,611	177,427	192,802	209,389	229,659	253,047	268,678
<b>Kansas</b>	<b>1987</b>	<b>1988</b>	<b>1989</b>	<b>1990</b>	<b>1991</b>	<b>1992</b>	<b>1993</b>
Ret. & disab. insurance benefit payments	2,937,947	3,127,716	3,341,080	3,580,902	3,851,632	4,085,995	4,233,005
Medical payments	1,202,155	1,293,298	1,497,131	1,716,823	1,981,112	2,291,050	2,567,369
Income maintenance benefit payments	259,255	287,615	318,132	346,994	383,864	463,132	500,600
Unemployment insurance benefit payments	169,307	146,782	153,406	159,306	194,423	274,294	264,856
Veterans benefit payments	155,999	157,905	161,146	168,474	177,236	190,064	193,748
Fed educ. & trng. ass't. pay (excl. vets)	67,526	73,321	103,566	95,382	88,960	100,358	96,506
Other payments to individuals	2,498	2,630	5,928	5,066	6,810	6,167	7,016
Government payments to individuals	4,794,687	5,089,267	5,580,389	6,072,947	6,684,037	7,411,060	7,863,100
Payments to nonprofit institutions	131,619	135,472	138,293	143,224	180,222	196,306	196,621
Business payments to individuals	136,801	134,736	136,443	139,479	137,663	145,564	142,551
Total Transfer Payments	5,063,107	5,359,475	5,855,125	6,355,650	7,001,922	7,752,930	8,202,272

Source: Bureau of Economic Analysis, Regional Economic Information System, Table CA5, Table CA35.

Table 18b  
 BREAKOUT OF TRANSFER PAYMENTS  
 ATCHISON COUNTY  
 1987-1993

Atchison	1987	1988	1989	1990	1991	1992	1993
Ret. & disab. insurance benefit payments	22,139	23,578	24,985	26,291	28,004	29,425	30,508
Medical payments	9,119	10,211	11,439	12,970	14,750	17,031	19,115
Income maintenance benefit payments	2,568	2,726	2,914	3,004	3,184	3,650	3,871
Unemployment insurance benefit payments	2,290	1,033	1,078	1,082	1,296	1,924	1,844
Veterans benefit payments	1,028	1,009	1,027	1,023	1,093	1,172	1,189
Fed educ. & trng. asst. pay (excl. vets)	381	416	601	551	503	561	535
Other payments to individuals	(L)	(L)	(L)	(L)	(L)	(L)	(L)
Government payments to individuals	37,538	38,987	42,074	44,950	48,870	53,799	57,106
Payments to nonprofit institutions	942	955	964	986	1,226	1,335	1,299
Business payments to individuals	979	950	951	960	937	991	941
Total Transfer Payments	39459	40892	43989	46896	51033	56125	59346

Source: Bureau of Economic Analysis, Regional Economic Information System, Table CA5, Table CA35

Table 18c  
BREAKOUT OF TRANSFER PAYMENTS  
BROWN COUNTY  
1987-1993

Brown	1987	1988	1989	1990	1991	1992	1993
Ret. & disab. insurance benefit payments	16,793	17,425	18,207	19,160	20,364	21,222	22,130
Medical payments	10,298	11,082	12,313	13,861	16,122	18,660	20,912
Income maintenance benefit payments	1,716	1,927	2,121	2,261	2,424	2,896	3,059
Unemployment insurance benefit payments	1,337	694	725	719	1,047	1,439	1,332
Veterans benefit payments	609	679	755	829	876	896	983
Fed educ. & trng. asst. pay (excl. vets)	63	80	151	139	105	103	95
Other payments to individuals	(L)	54	150	98	130	98	81
Government payments to individuals	30,865	31,941	34,422	37,067	41,068	45,314	48,592
Payments to nonprofit institutions	607	624	632	649	810	882	849
Business payments to individuals	631	620	623	632	619	654	615
Total Transfer Payments	32,103	33,185	35,677	38,348	42,497	46,850	50,056

Source: Bureau of Economic Analysis, Regional Economic Information System, Table CA5, Table CA35

Table 18d  
 BREAKOUT OF TRANSFER PAYMENTS  
 DONIPHAN COUNTY  
 1987-1993

Doniphan	1987	1988	1989	1990	1991	1992	1993
Ret. & disab. insurance benefit payments	10,949	11,719	12,284	12,976	13,746	14,631	15,124
Medical payments	4,462	4,580	5,525	6,810	7,963	9,312	10,318
Income maintenance benefit payments	1,360	1,449	1,545	1,567	1,859	2,185	2,306
Unemployment insurance benefit payments	1,124	571	597	694	971	1,133	1,224
Veterans benefit payments	635	615	561	486	498	532	522
Fed educ. & trng. asst. pay (excl. vets)	425	453	607	557	538	619	594
Other payments to individuals	(L)	(L)	(L)	(L)	(L)	(L)	118
Government payments to individuals	18,965	19,398	21,146	23,112	25,605	28,438	30,206
Payments to nonprofit institutions	458	466	466	473	582	635	624
Business payments to individuals	476	463	460	461	445	471	452
Total Transfer Payments	19,899	20,327	22,072	24,046	26,632	29,544	31,282

Source: Bureau of Economic Analysis, Regional Economic Information System, Table CA5, Table CA35



Table 18e  
 BREAKOUT OF TRANSFER PAYMENTS  
 JACKSON COUNTY  
 1987-1993

Jackson	1987	1988	1989	1990	1991	1992	1993
Ret. & disab. insurance benefit payments	13,960	14,815	15,840	17,336	18,736	19,958	20,838
Medical payments	4,961	5,583	6,767	8,362	9,731	11,190	12,557
Income maintenance benefit payments	1,065	1,207	1,341	1,452	1,578	1,815	1,934
Unemployment insurance benefit payments	706	843	880	957	1,135	1,473	1,531
Veterans benefit payments	895	880	910	899	908	974	1,082
Fed educ. & trng. asst. pay (excl. vets)	65	83	156	144	109	107	100
Other payments to individuals	325	279	523	185	70	55	50
Government payments to individuals	21,977	23,690	26,417	29,335	32,267	35,572	38,092
Payments to nonprofit institutions	626	642	652	673	842	918	894
Business payments to individuals	651	640	644	655	642	679	649
Total Transfer Payments	23,254	24,972	27,713	30,663	33,751	37,169	39,635

Source: Bureau of Economic Analysis, Regional Economic Information System, Table CA5, Table CA35

Table 18e  
 BREAKOUT OF TRANSFER PAYMENTS  
 JEFFERSON COUNTY  
 1987-1993

Jefferson	1987	1988	1989	1990	1991	1992	1993
Ret. & disab. insurance benefit payments	18,908	19,983	21,350	22,683	24,451	26,046	27,228
Medical payments	7,168	7,799	9,204	11,037	11,696	13,461	15,084
Income maintenance benefit payments	995	1,179	1,315	1,526	1,559	1,914	2,065
Unemployment insurance benefit payments	976	1,162	1,213	1,305	1,531	2,001	1,921
Veterans benefit payments	1,221	1,225	1,267	1,493	1,519	1,606	1,561
Fed educ. & trng. asst. pay (excl. vets)	87	111	214	200	152	150	142
Other payments to individuals	(L)	(L)	(L)	(L)	(L)	(L)	(L)
Government payments to individuals	29,369	31,473	34,598	38,275	40,951	45,216	48,047
Payments to nonprofit institutions	838	870	894	930	1,177	1,283	1,280
Business payments to individuals	871	865	881	906	899	951	929
Total Transfer Payments	31,078	33,208	36,373	40,111	43,027	47,450	50,256

Source: Bureau of Economic Analysis, Regional Economic Information System, Table CA5, Table CA35

Table 18e  
 BREAKOUT OF TRANSFER PAYMENTS  
 NEMAHA COUNTY  
 1987-1993

Nemaha	1987	1988	1989	1990	1991	1992	1993
Ret. & disab. insurance benefit payments	14,876	15,612	16,588	17,592	18,966	20,026	20,825
Medical payments	5,813	5,915	6,958	8,314	9,868	11,369	12,736
Income maintenance benefit payments	785	904	952	947	1,113	1,330	1,425
Unemployment insurance benefit payments	335	396	413	362	485	760	785
Veterans benefit payments	762	762	737	768	841	877	791
Fed educ. & trng. asst. pay (excl. vets)	61	76	142	131	97	96	90
Other payments to individuals	(L)	(L)	(L)	(L)	(L)	(L)	53
Government payments to individuals	22,637	23,669	25,797	28,124	31,384	34,474	36,705
Payments to nonprofit institutions	579	588	595	609	757	824	810
Business payments to individuals	602	586	586	592	578	611	588
Total Transfer Payments	23,818	24,843	26,978	29,325	32,719	35,909	38,103

Source: Bureau of Economic Analysis, Regional Economic Information System, Table CA5, Table CA35

---

**APPENDIX J**  
**TELEPHONE EXCHANGE SERVICE AREAS**

---

**Atchison County**  
**Brown County**  
**Doniphan County**  
**Jackson County**  
**Jefferson County**  
**Nemaha County**

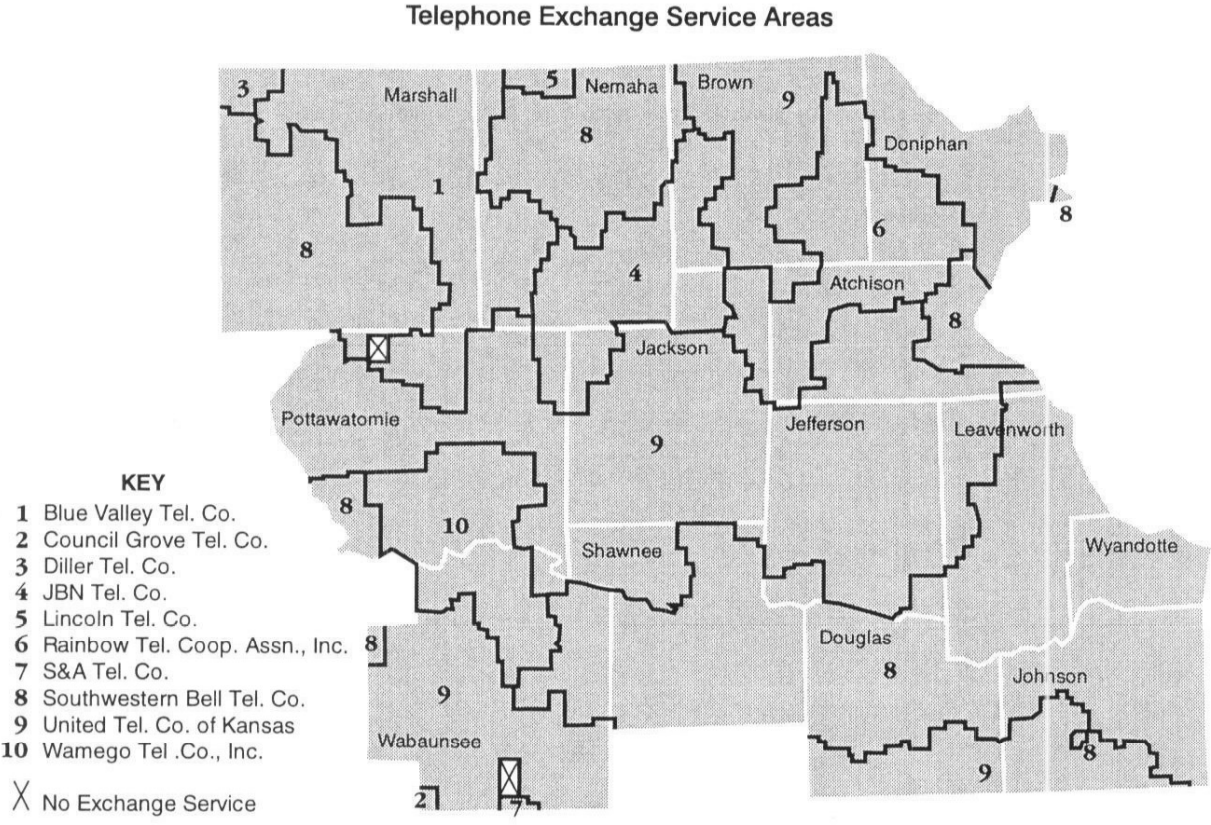
**APPENDIX J**  
**TELEPHONE EXCHANGE SERVICE AREAS**

---

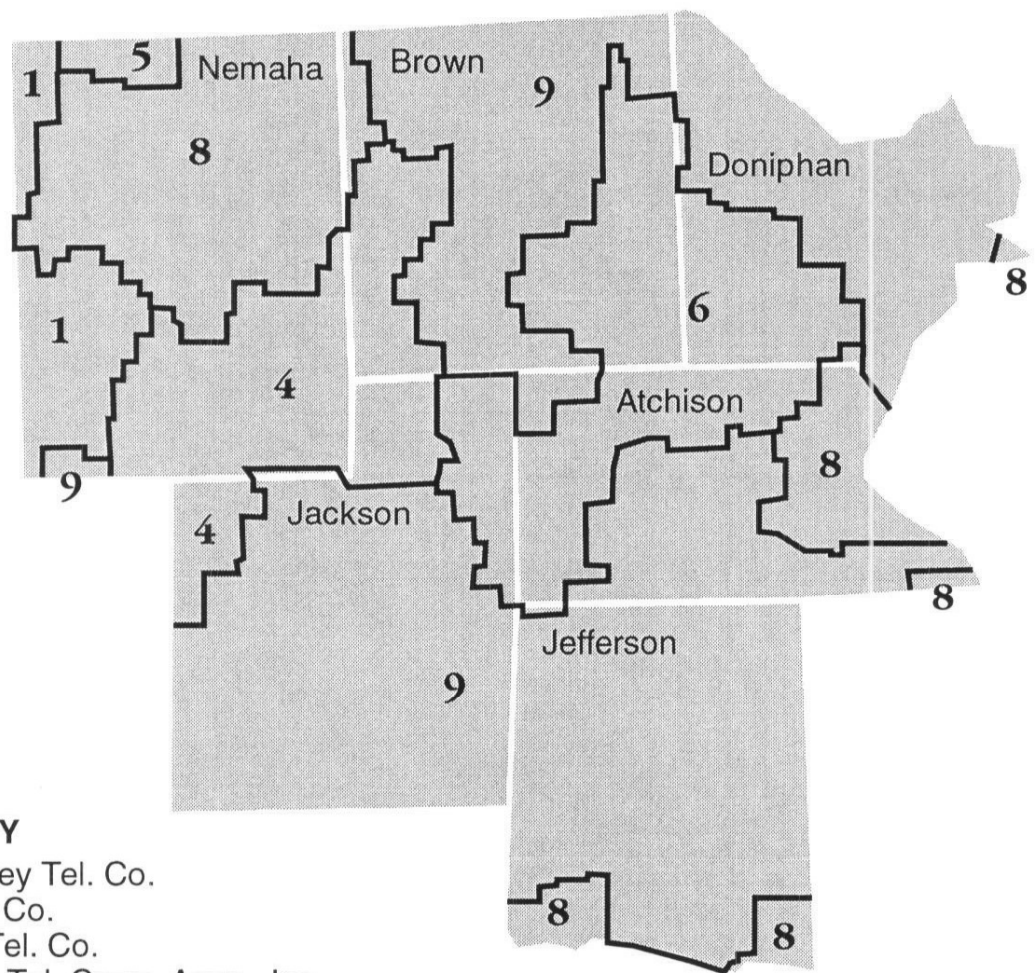
Any telecommunications plan that may be developed for the NEKCRED region will need to take into account the different telephone exchange service areas in the region. The following Appendix H contains maps for the NEKCRED region and for the six counties in the region. Some key findings by looking at the maps include:

- Ten telephone companies provide service to northeast Kansas (Map 7). Six of those 10 companies provide service to the six NEKCRED counties of Atchison, Brown, Doniphan, Jackson, Jefferson, and Nemaha (Map 7a).
- Three telephone companies provide telephone service to Atchison County: Rainbow Cooperative, Southwestern Bell, and United (Map 7b)
- Brown County has four different telephone companies providing service: JNB, Rainbow Cooperative, Southwestern Bell, and United (Map 7c).
- Three telephone companies service Doniphan County: Rainbow Cooperative, Southwestern Bell, and United (Map 7d).
- Jackson County's telephone service is provided by three companies: JNB, Rainbow Cooperative, and United (Map 7e).
- Three telephone exchange areas can be found in Jefferson County: Rainbow Cooperative, Southwestern Bell, and United (Map 7f).
- Nemaha County receives telephone service from five companies: Blue Valley, JNB, Lincoln, Southwestern Bell, and United of Kansas (Map 7g).
- Atchison, Doniphan, Jackson, and Jefferson counties are all covered by the same three telephone companies: Rainbow Cooperative, Southwestern Bell and United.

**MAP 7. TELEPHONE EXCHANGE SERVICE AREAS: NEKCRED COUNTIES AND NEIGHBORING COUNTIES**



Map 7a. Telephone Exchange Service Areas: NEKCRED Counties

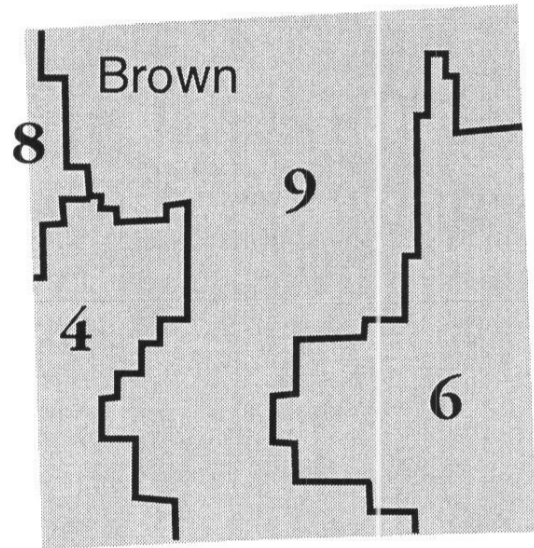


**KEY**

- 1 Blue Valley Tel. Co.
- 4 JBN Tel. Co.
- 5 Lincoln Tel. Co.
- 6 Rainbow Tel. Coop. Assn., Inc.
- 8 Southwestern Bell Tel. Co.
- 9 United Tel. Co. of Kansas

Map 7b. Telephone Exchange Service Areas: Brown County

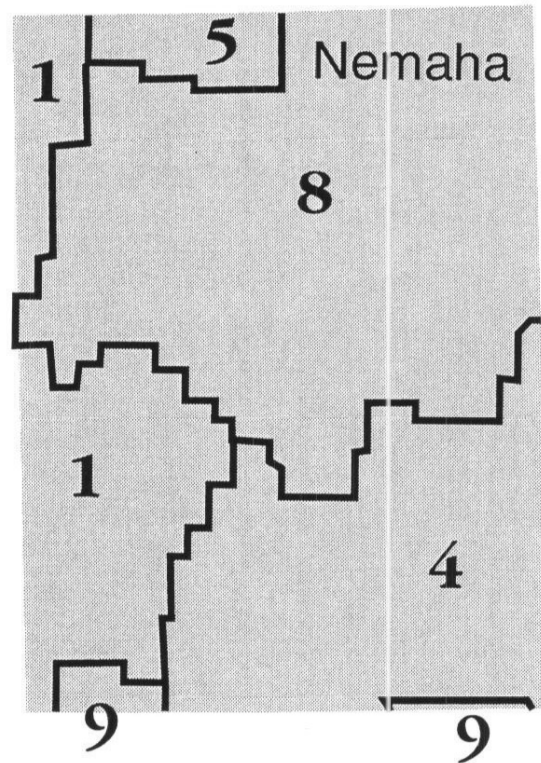
- KEY**
- 4 JBN Tel. Co.
  - 6 Rainbow Tel. Coop. Assn., Inc.
  - 8 Southwestern Bell Tel. Co.
  - 9 United Tel. Co. of Kansas





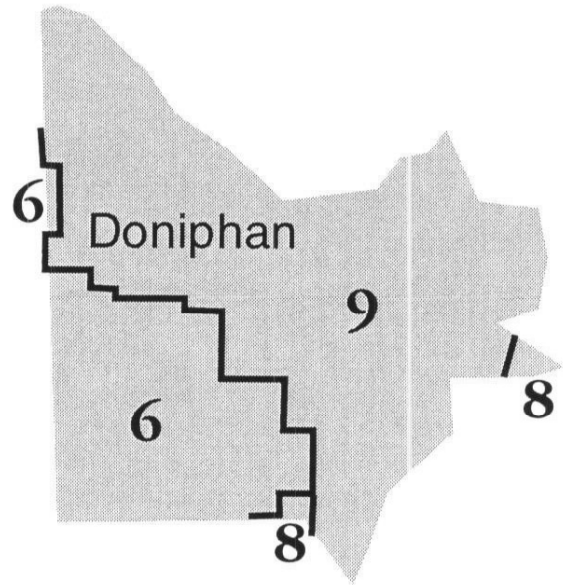
Map 7c. Telephone Exchange Service Areas: Nemaha County

- KEY**
- 1 Blue Valley Tel. Co.
  - 4 JBN Tel. Co.
  - 5 Lincoln Tel. Co.
  - 8 Southwestern Bell Tel. Co.
  - 9 United Tel. Co. of Kansas

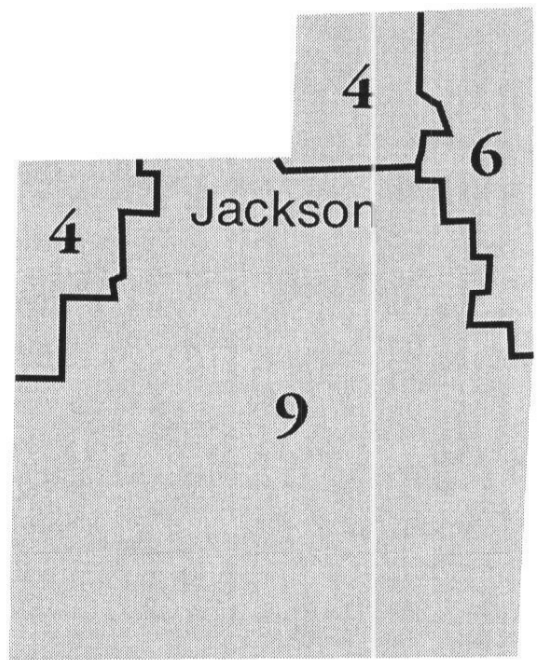


**Map 7d. Telephone Exchange Service Areas: Doniphan County**

- KEY**
- 6** Rainbow Tel. Coop. Assn., Inc.
  - 8** Southwestern Bell Tel. Co.
  - 9** United Tel. Co. of Kansas



Map 7e. Telephone Exchange Service Areas: Jackson County



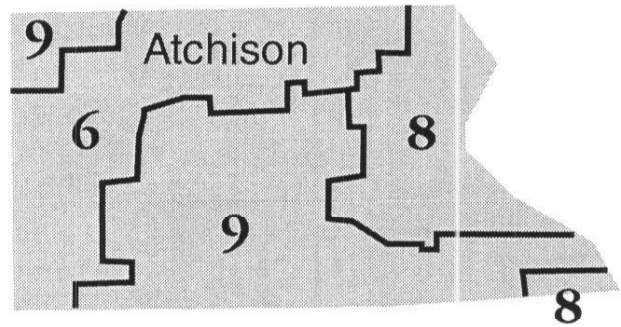
**KEY**

- 4 JBN Tel. Co.
- 6 Rainbow Tel. Coop. Assn., Inc.
- 9 United Tel. Co. of Kansas

**Map 7f. Telephone Exchange Service Areas: Atchison County**

**KEY**

- 6** Rainbow Tel. Coop. Assn., Inc.
- 8** Southwestern Bell Tel. Co.
- 9** United Tel. Co. of Kansas



Map 7g. Telephone Exchange Service Areas: Jefferson County

- KEY**
- 6 Rainbow Tel. Coop. Assn., Inc.
  - 8 Southwestern Bell Tel. Co.
  - 9 United Tel. Co. of Kansas

