



EMPLOYMENT AND EARNINGS

Kansas Statistical Abstract 2022
Institute for Policy & Social Research
ipsr.ku.edu/ksdata/ksah/

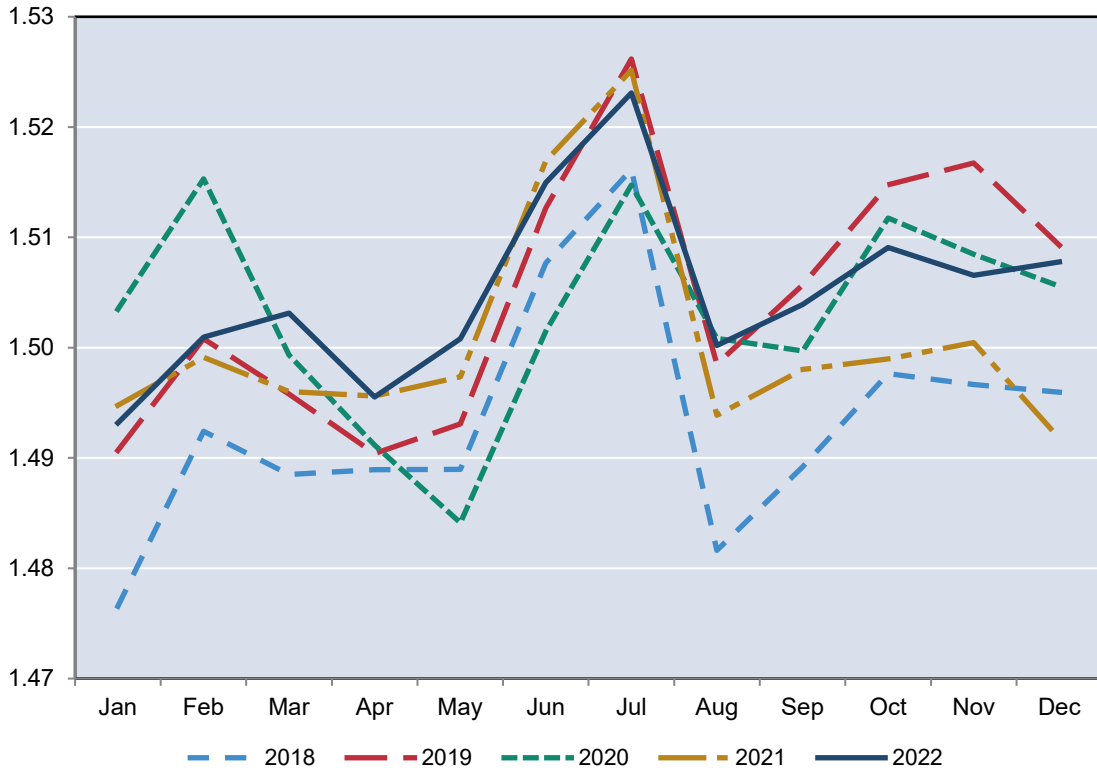
**Civilian Labor Force Estimates for the U.S., by State
2022 Annual Averages**

County	Labor Force	Employed	Unemployed	Unemployment Rate
Alabama	2,286,028	2,226,670	59,358	2.6
Alaska	356,799	342,400	14,399	4.0
Arizona	3,615,161	3,477,033	138,128	3.8
Arkansas	1,369,367	1,323,949	45,418	3.3
California	19,251,974	18,440,895	811,079	4.2
Colorado	3,200,625	3,103,531	97,094	3.0
Connecticut	1,932,463	1,851,993	80,470	4.2
Delaware	496,688	474,258	22,430	4.5
District of Columbia	388,403	370,229	18,174	4.7
Florida	10,762,307	10,449,041	313,266	2.9
Georgia	5,234,275	5,075,093	159,182	3.0
Hawaii	676,299	652,677	23,622	3.5
Idaho	950,672	925,358	25,314	2.7
Illinois	6,472,663	6,176,876	295,787	4.6
Indiana	3,404,443	3,302,632	101,811	3.0
Iowa	1,716,894	1,669,933	46,961	2.7
Kansas	1,504,932	1,464,834	40,098	2.7
Kentucky	2,048,066	1,968,121	79,945	3.9
Louisiana	2,088,217	2,011,867	76,350	3.7
Maine	674,875	654,965	19,910	3.0
Maryland	3,171,513	3,068,700	102,813	3.2
Massachusetts	3,743,924	3,603,172	140,752	3.8
Michigan	4,835,966	4,632,539	203,427	4.2
Minnesota	3,077,500	2,994,920	82,580	2.7
Mississippi	1,251,022	1,201,880	49,142	3.9
Missouri	3,061,279	2,984,340	76,939	2.5
Montana	567,787	552,842	14,945	2.6
Nebraska	1,058,927	1,034,091	24,836	2.3
Nevada	1,549,859	1,466,213	83,646	5.4
New Hampshire	766,672	747,339	19,333	2.5
New Jersey	4,739,804	4,564,113	175,691	3.7
New Mexico	947,025	908,870	38,155	4.0
New York	9,616,989	9,205,821	411,168	4.3
North Carolina	5,159,329	4,970,998	188,331	3.7
North Dakota	414,311	405,580	8,731	2.1
Ohio	5,741,277	5,510,327	230,950	4.0
Oklahoma	1,887,040	1,830,061	56,979	3.0
Oregon	2,176,734	2,085,939	90,795	4.2
Pennsylvania	6,479,077	6,196,385	282,692	4.4
Rhode Island	569,455	551,220	18,235	3.2
South Carolina	2,374,975	2,297,927	77,048	3.2
South Dakota	475,065	465,250	9,815	2.1
Tennessee	3,352,030	3,238,559	113,471	3.4
Texas	14,662,558	14,092,833	569,725	3.9
Utah	1,743,054	1,702,674	40,380	2.3
Vermont	342,119	333,081	9,038	2.6
Virginia	4,435,858	4,308,805	127,053	2.9
Washington	3,990,343	3,822,319	168,024	4.2
West Virginia	785,115	754,453	30,662	3.9
Wisconsin	3,082,128	2,992,049	90,079	2.9
Wyoming	291,756	281,343	10,413	3.6
United States	164,781,642	158,766,998	6,014,644	3.7

Source: U.S. Department of Labor, Bureau of Labor Statistics, <https://www.bls.gov/lau/> (accessed July 14, 2023).

Total Civilian Labor Force Estimates for Kansas 2018-2022

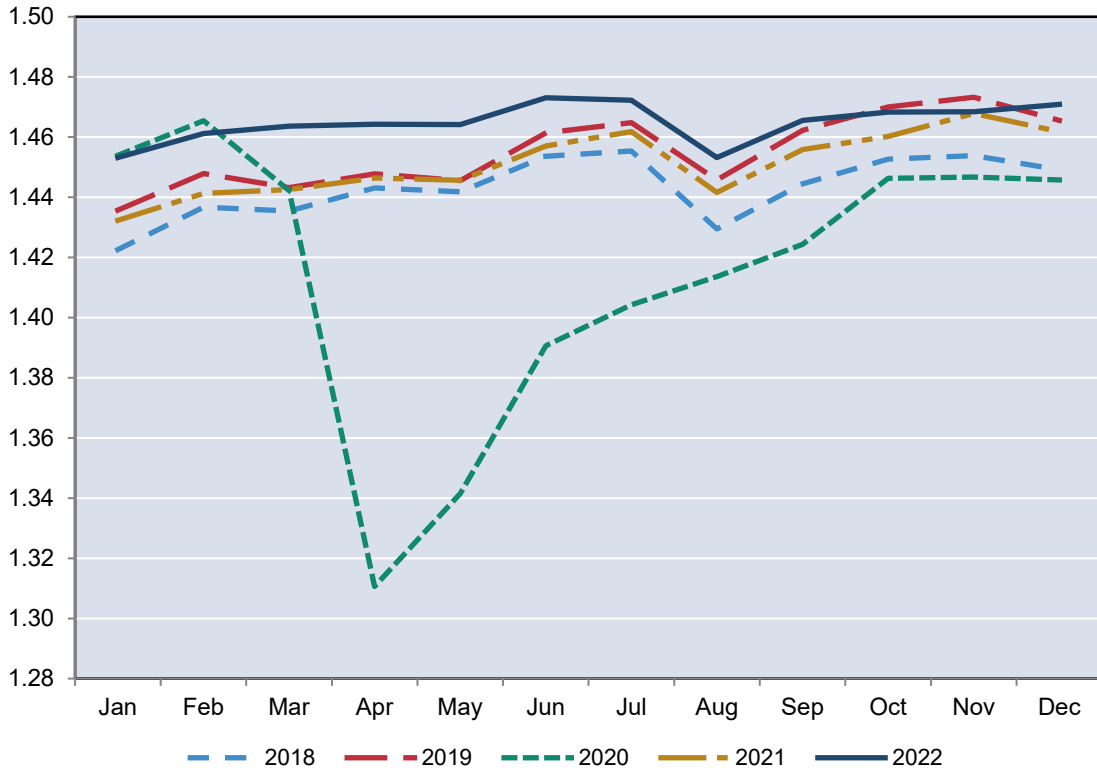
Millions of Persons



Source: Institute for Policy & Social Research, The University of Kansas; data from the U.S. Bureau of Labor Statistics.
Data revised annually.

Employed Civilian Labor Force Estimates for Kansas 2018-2022

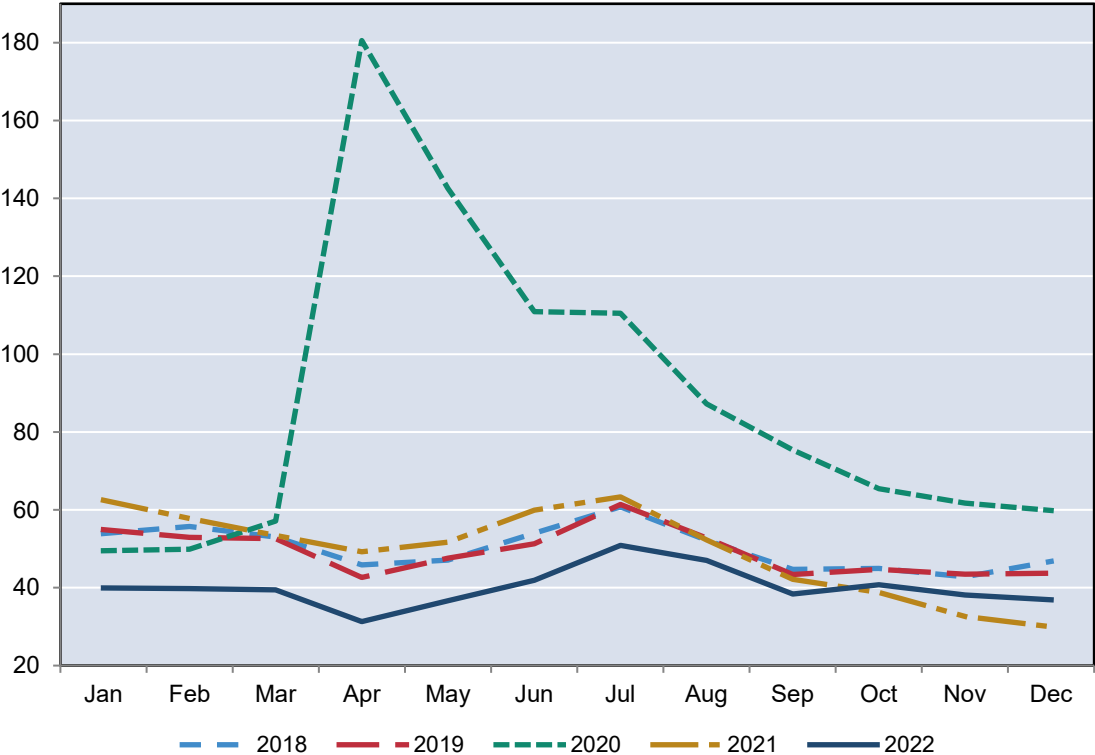
Millions of Persons



Source: Institute for Policy & Social Research, The University of Kansas; data from the U.S. Bureau of Labor Statistics.
Data revised annually.

Unemployed Civilian Labor Force Estimates for Kansas 2018-2022

Thousands of Persons



Source: Institute for Policy & Social Research, The University of Kansas; data from the U.S. Bureau of Labor Statistics.
Data revised annually.

Civilian Labor Force in Kansas, 1972-2022

Year	Labor Force	Number Employed	Number Unemployed	Unemployment Rate
1972	968,600	930,500	38,100	3.9
1973	1,014,100	982,600	31,500	3.1
1974	1,043,900	1,007,500	36,400	3.5
1975*	1,067,900	1,017,000	50,900	4.8
1976	1,076,433	1,031,811	44,622	4.1
1977	1,109,756	1,066,824	42,932	3.9
1978	1,135,822	1,101,149	34,673	3.1
1979	1,161,492	1,125,486	36,006	3.1
1980	1,179,558	1,127,524	52,034	4.4
1981	1,181,689	1,130,646	51,043	4.3
1982	1,193,636	1,118,398	75,238	6.3
1983	1,194,270	1,123,813	70,457	5.9
1984	1,204,362	1,144,575	59,787	5.0
1985	1,230,529	1,167,067	63,462	5.2
1986	1,249,332	1,182,678	66,654	5.3
1987	1,264,347	1,203,518	60,829	4.8
1988	1,275,408	1,218,029	57,379	4.5
1989	1,279,617	1,226,451	53,166	4.2
1990	1,272,578	1,218,561	54,017	4.2
1991	1,285,549	1,228,183	57,366	4.5
1992	1,310,475	1,250,711	59,764	4.6
1993	1,328,417	1,262,698	65,719	4.9
1994	1,346,332	1,281,897	64,435	4.8
1995	1,354,129	1,295,252	58,877	4.3
1996	1,367,812	1,309,635	58,177	4.3
1997	1,380,868	1,328,415	52,453	3.8
1998	1,399,168	1,347,503	51,665	3.7
1999	1,406,631	1,357,493	49,138	3.5
2000	1,402,606	1,349,841	52,765	3.8
2001	1,398,521	1,338,775	59,746	4.3
2002	1,419,335	1,347,163	72,172	5.1
2003	1,441,065	1,361,115	79,950	5.5
2004	1,458,910	1,378,355	80,555	5.5
2005*	1,458,767	1,384,654	74,113	5.1
2006	1,467,553	1,402,950	64,603	4.4
2007	1,485,414	1,422,109	63,305	4.3
2008	1,493,365	1,425,022	68,343	4.6
2009	1,512,572	1,408,142	104,430	6.9
2010	1,500,463	1,396,172	104,291	7.0
2011	1,498,000	1,402,198	95,802	6.4
2012	1,490,808	1,405,638	85,170	5.7
2013	1,489,395	1,410,470	78,925	5.3
2014	1,494,203	1,426,892	67,311	4.5
2015	1,493,782	1,431,533	62,249	4.2
2016	1,491,961	1,431,920	60,041	4.0
2017	1,488,346	1,434,516	53,830	3.6
2018	1,493,360	1,443,204	50,156	3.4
2019	1,504,552	1,455,263	49,289	3.3
2020	1,503,002	1,415,445	87,557	5.8
2021	1,500,677	1,451,204	49,473	3.3
2022	1,504,932	1,464,834	40,098	2.7

Source: Kansas Department of Labor, Labor Market Information Center in conjunction with U.S. Department of Labor, Bureau of Labor Statistics, <https://www.bls.gov/lau/> (accessed July 14, 2023).

Data refer to place of residence.

Data revised annually.

* Data forward not comparable to prior years due to revised model.

Civilian Labor Force Estimates for Kansas, by County, 2021 and 2022

County	2021				2022			
	Labor Force	Employed	Unemployed	Unemployment Rate	Labor Force	Employed	Unemployed	Unemployment Rate
Allen	6,496	6,292	204	3.1	6,312	6,130	182	2.9
Anderson	4,640	4,521	119	2.6	4,356	4,257	99	2.3
Atchison	6,782	6,518	264	3.9	6,789	6,552	237	3.5
Barber	2,307	2,261	46	2.0	2,276	2,229	47	2.1
Barton	13,350	12,951	399	3.0	13,133	12,788	345	2.6
Bourbon	6,503	6,256	247	3.8	6,275	6,057	218	3.5
Brown	5,142	5,000	142	2.8	5,089	4,969	120	2.4
Butler	32,566	31,401	1,165	3.6	32,766	31,856	910	2.8
Chase	1,380	1,346	34	2.5	1,392	1,362	30	2.2
Chautauqua	1,465	1,406	59	4.0	1,431	1,391	40	2.8
Cherokee	9,910	9,612	298	3.0	9,881	9,622	259	2.6
Cheyenne	1,295	1,271	24	1.9	1,259	1,229	30	2.4
Clark	1,133	1,112	21	1.9	1,110	1,088	22	2.0
Clay	3,790	3,689	101	2.7	3,744	3,646	98	2.6
Cloud	3,899	3,787	112	2.9	3,832	3,729	103	2.7
Coffey	3,979	3,847	132	3.3	3,783	3,652	131	3.5
Comanche	897	877	20	2.2	869	850	19	2.2
Cowley	16,699	16,113	586	3.5	16,444	15,958	486	3.0
Crawford	18,929	18,313	616	3.3	19,088	18,533	555	2.9
Decatur	1,207	1,175	32	2.7	1,180	1,146	34	2.9
Dickinson	9,066	8,789	277	3.1	8,647	8,406	241	2.8
Doniphan	4,096	3,979	117	2.9	4,030	3,926	104	2.6
Douglas	64,798	62,717	2,081	3.2	66,297	64,587	1,710	2.6
Edwards	1,463	1,431	32	2.2	1,392	1,360	32	2.3
Elk	1,159	1,124	35	3.0	1,174	1,142	32	2.7
Ellis	17,181	16,836	345	2.0	17,032	16,695	337	2.0
Ellsworth	2,687	2,624	63	2.3	2,630	2,569	61	2.3
Finney	20,342	19,898	444	2.2	20,483	20,058	425	2.1
Ford	17,686	17,295	391	2.2	17,851	17,479	372	2.1
Franklin	14,563	14,100	463	3.2	14,872	14,509	363	2.4
Geary	11,435	10,937	498	4.4	11,358	10,931	427	3.8
Gove	1,460	1,432	28	1.9	1,370	1,341	29	2.1
Graham	1,136	1,102	34	3.0	1,191	1,163	28	2.4
Grant	2,957	2,864	93	3.1	2,820	2,738	82	2.9
Gray	3,229	3,171	58	1.8	3,154	3,092	62	2.0
Greeley	827	816	11	1.3	794	782	12	1.5
Greenwood	3,037	2,950	87	2.9	3,026	2,953	73	2.4

Civilian Labor Force Estimates for Kansas, by County, 2021 and 2022

County	2021				2022			
	Labor Force	Employed	Unemployed	Unemployment Rate	Labor Force	Employed	Unemployed	Unemployment Rate
Hamilton	1,632	1,609	23	1.4	1,628	1,601	27	1.7
Harper	2,767	2,692	75	2.7	2,783	2,724	59	2.1
Harvey	16,977	16,466	511	3.0	17,120	16,687	433	2.5
Haskell	2,231	2,190	41	1.8	2,182	2,140	42	1.9
Hodgeman	1,035	1,016	19	1.8	1,028	1,007	21	2.0
Jackson	7,283	7,088	195	2.7	7,286	7,115	171	2.3
Jefferson	10,396	10,080	316	3.0	10,381	10,103	278	2.7
Jewell	1,238	1,209	29	2.3	1,188	1,157	31	2.6
Johnson	345,753	336,251	9,502	2.7	349,503	341,465	8,038	2.3
Kearny	2,044	2,010	34	1.7	2,007	1,969	38	1.9
Kingman	3,282	3,180	102	3.1	3,277	3,197	80	2.4
Kiowa	1,232	1,206	26	2.1	1,213	1,186	27	2.2
Labette	9,438	9,108	330	3.5	9,413	9,126	287	3.0
Lane	748	732	16	2.1	730	709	21	2.9
Leavenworth	37,038	35,784	1,254	3.4	37,454	36,366	1,088	2.9
Lincoln	1,691	1,653	38	2.2	1,693	1,653	40	2.4
Linn	4,352	4,162	190	4.4	4,373	4,203	170	3.9
Logan	1,622	1,595	27	1.7	1,607	1,577	30	1.9
Lyon	16,958	16,462	496	2.9	17,028	16,598	430	2.5
McPherson	17,205	16,831	374	2.2	17,375	17,041	334	1.9
Marion	6,010	5,861	149	2.5	5,963	5,818	145	2.4
Marshall	5,432	5,323	109	2.0	5,315	5,209	106	2.0
Meade	2,181	2,132	49	2.2	2,116	2,076	40	1.9
Miami	17,842	17,308	534	3.0	18,037	17,576	461	2.6
Mitchell	3,435	3,365	70	2.0	3,359	3,293	66	2.0
Montgomery	14,724	14,136	588	4.0	14,631	14,181	450	3.1
Morris	3,080	3,006	74	2.4	3,037	2,967	70	2.3
Morton	1,137	1,107	30	2.6	1,121	1,091	30	2.7
Nemaha	5,577	5,475	102	1.8	5,611	5,508	103	1.8
Neosho	6,118	5,852	266	4.3	6,036	5,819	217	3.6
Ness	1,317	1,287	30	2.3	1,327	1,298	29	2.2
Norton	2,669	2,620	49	1.8	2,617	2,567	50	1.9
Osage	8,052	7,807	245	3.0	8,033	7,808	225	2.8
Osborne	1,967	1,930	37	1.9	1,904	1,865	39	2.0
Ottawa	2,969	2,884	85	2.9	3,012	2,936	76	2.5
Pawnee	2,829	2,764	65	2.3	2,706	2,641	65	2.4
Phillips	2,638	2,580	58	2.2	2,656	2,597	59	2.2
Pottawatomie	12,297	11,979	318	2.6	12,519	12,216	303	2.4

Civilian Labor Force Estimates for Kansas, by County, 2021 and 2022

County	2021				2022			
	Labor Force	Employed	Unemployed	Unemployment Rate	Labor Force	Employed	Unemployed	Unemployment Rate
Pratt	4,903	4,790	113	2.3	4,903	4,798	105	2.1
Rawlins	1,626	1,600	26	1.6	1,529	1,501	28	1.8
Reno	29,721	28,747	974	3.3	29,232	28,406	826	2.8
Republic	2,358	2,302	56	2.4	2,383	2,333	50	2.1
Rice	5,301	5,168	133	2.5	5,335	5,212	123	2.3
Riley	33,889	32,914	975	2.9	34,620	33,691	929	2.7
Rooks	2,454	2,392	62	2.5	2,408	2,345	63	2.6
Rush	1,585	1,546	39	2.5	1,616	1,580	36	2.2
Russell	3,351	3,267	84	2.5	3,295	3,220	75	2.3
Saline	29,473	28,570	903	3.1	30,214	29,483	731	2.4
Scott	2,841	2,795	46	1.6	2,737	2,687	50	1.8
Sedgwick	255,879	244,066	11,813	4.6	255,813	247,806	8,007	3.1
Seward	9,900	9,617	283	2.9	9,811	9,560	251	2.6
Shawnee	91,820	88,910	2,910	3.2	91,886	89,363	2,523	2.7
Sheridan	1,465	1,437	28	1.9	1,455	1,427	28	1.9
Sherman	2,863	2,789	74	2.6	2,790	2,726	64	2.3
Smith	2,010	1,974	36	1.8	1,953	1,913	40	2.0
Stafford	1,971	1,925	46	2.3	1,914	1,869	45	2.4
Stanton	1,099	1,077	22	2.0	1,099	1,078	21	1.9
Stevens	2,877	2,815	62	2.2	2,964	2,906	58	2.0
Sumner	10,770	10,321	449	4.2	10,777	10,456	321	3.0
Thomas	4,256	4,174	82	1.9	4,247	4,165	82	1.9
Trego	1,423	1,392	31	2.2	1,358	1,325	33	2.4
Wabaunsee	3,735	3,641	94	2.5	3,737	3,645	92	2.5
Wallace	889	873	16	1.8	852	835	17	2.0
Washington	3,074	3,019	55	1.8	3,002	2,943	59	2.0
Wichita	1,179	1,156	23	2.0	1,146	1,123	23	2.0
Wilson	3,826	3,669	157	4.1	3,723	3,606	117	3.1
Woodson	1,527	1,473	54	3.5	1,539	1,485	54	3.5
Wyandotte	77,936	74,238	3,698	4.7	78,206	75,487	2,719	3.5
Kansas	1,500,688	1,451,210	49,478	3.3	1,504,943	1,464,839	40,104	2.7

Source: U.S. Department of Labor, Bureau of Labor Statistics, <https://www.bls.gov/lau/> (accessed July 21, 2023).

Data refer to place of residence.

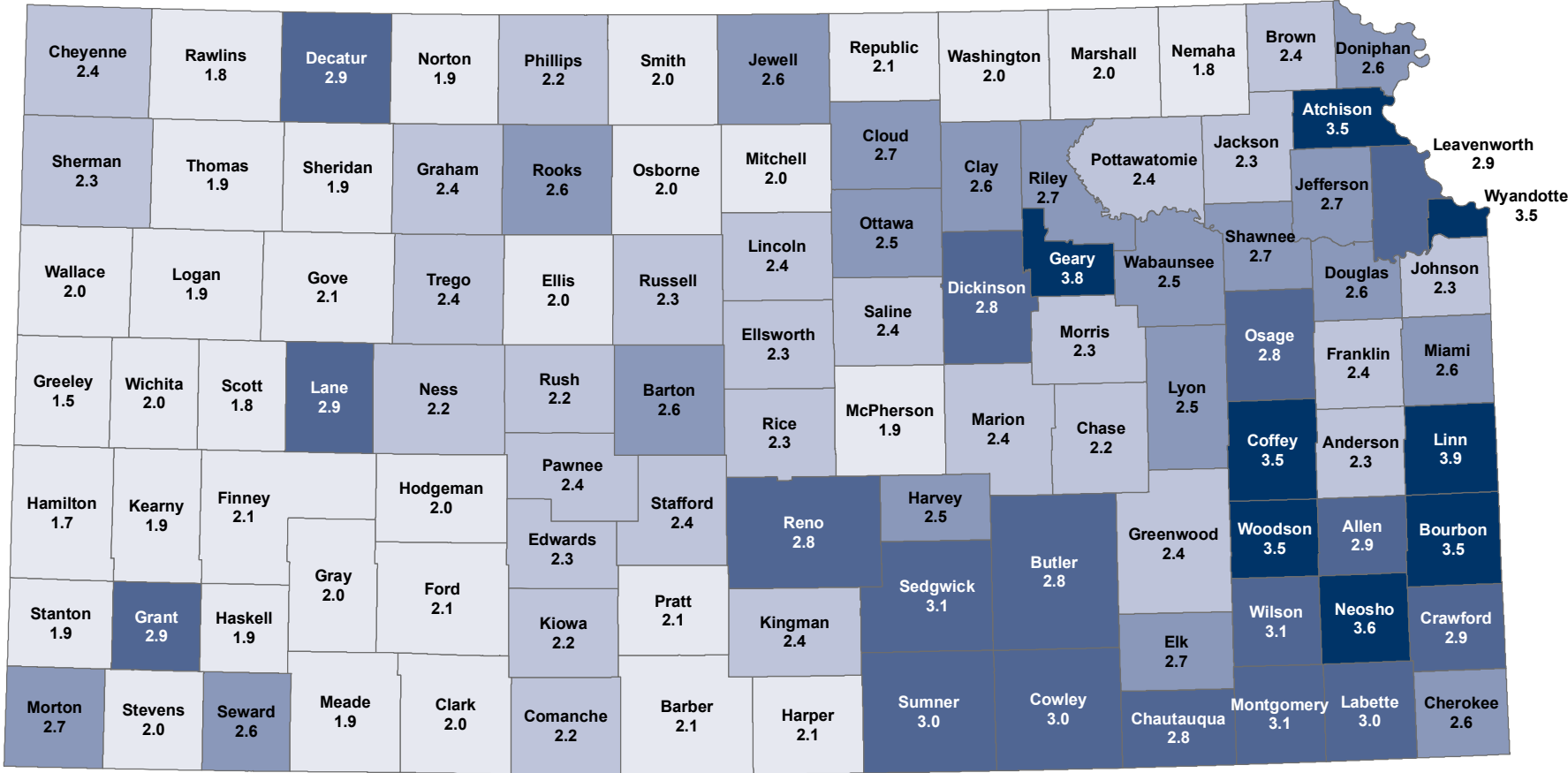
Data revised annually.

**Civilian Labor Force Estimates for Kansas, by Metropolitan Statistical Area,
Micropolitan Area, and City, 2022**

Area	Labor Force	Employed	Unemployed	Unemployment Rate
Metropolitan Statistical Area				
Kansas City, Kansas MSA	487,571	475,096	12,475	2.6
Lawrence MSA	66,297	64,587	1,710	2.6
Manhattan MSA	47,140	45,908	1,232	2.6
St. Joseph, Kansas MSA	4,030	3,926	104	2.6
Topeka MSA	121,323	118,034	3,289	2.7
Wichita MSA	319,753	310,002	9,751	3.0
Micropolitan Area				
Arkansas City-Winfield Micropolitan	16,444	15,958	486	3.0
Atchison Micropolitan	6,789	6,552	237	3.5
Coffeyville Micropolitan	14,631	14,181	450	3.1
Dodge City Micropolitan	17,851	17,479	372	2.1
Emporia Micropolitan	17,028	16,598	430	2.5
Garden City Micropolitan	22,490	22,027	463	2.1
Great Bend Micropolitan	13,133	12,788	345	2.6
Hays Micropolitan	17,032	16,695	337	2.0
Hutchinson Micropolitan	29,232	28,406	826	2.8
Junction City Micropolitan	11,358	10,931	427	3.8
Liberal Micropolitan	9,811	9,560	251	2.6
McPherson Micropolitan	17,375	17,041	334	1.9
Ottawa Micropolitan	14,872	14,509	363	2.4
Parsons Micropolitan	9,413	9,126	287	3.0
Pittsburg Micropolitan	19,088	18,533	555	2.9
Salina Micropolitan	33,226	32,419	807	2.4
City				
Derby	13,049	12,682	367	2.8
Dodge City	14,193	13,897	296	2.1
Emporia	12,684	12,367	317	2.5
Garden City	14,885	14,571	314	2.1
Hutchinson	18,507	17,951	556	3.0
Junction City	8,605	8,294	311	3.6
Kansas City	71,464	68,959	2,505	3.5
Lawrence	53,582	52,187	1,395	2.6
Leavenworth	14,059	13,599	460	3.3
Leawood	17,810	17,410	400	2.2
Lenexa	33,327	32,553	774	2.3
Manhattan	28,928	28,199	729	2.5
Olathe	81,999	80,218	1,781	2.2
Overland Park	114,387	111,684	2,703	2.4
Salina	25,651	25,011	640	2.5
Shawnee	37,312	36,446	866	2.3
Topeka	63,422	61,577	1,845	2.9
Wichita	191,918	185,656	6,262	3.3

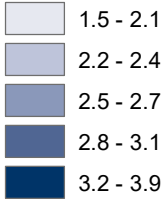
Source: Kansas Department of Labor, Kansas Labor Information Center in conjunction with U.S. Department of Labor, Bureau of Labor Statistics, <https://klic.dol.ks.gov> (accessed July 21, 2023).

Unemployment Rates in Kansas, by County 2022 Average



Source: Institute for Policy & Social Research, The University of Kansas; data from U.S. Department of Labor, Bureau of Labor Statistics.

Unemployment Rate



Kansas: 2.7
U.S.: 3.6

**Unemployment Rates in Kansas, by County
2017-2022, Annual Averages**

County	2017	2018	2019	2020	2021	2022
Allen	4.8	4.0	3.7	5.4	3.1	2.9
Anderson	3.9	3.5	3.4	4.1	2.6	2.3
Atchison	5.2	4.6	5.4	6.8	3.9	3.5
Barber	2.8	2.5	2.6	3.2	2.0	2.1
Barton	3.6	3.2	3.2	4.6	3.0	2.6
Bourbon	4.4	4.2	4.4	5.7	3.8	3.5
Brown	3.2	3.0	3.2	4.4	2.8	2.4
Butler	3.7	3.4	3.3	6.6	3.6	2.8
Chase	2.6	2.6	2.8	5.4	2.5	2.2
Chautauqua	4.7	4.0	3.9	6.1	4.0	2.8
Cherokee	3.9	3.7	3.6	5.2	3.0	2.6
Cheyenne	2.6	2.3	2.5	2.1	1.9	2.4
Clark	2.5	2.4	2.4	2.0	1.9	2.0
Clay	3.7	3.2	3.3	4.4	2.7	2.6
Cloud	4.3	3.5	3.3	4.0	2.9	2.7
Coffey	5.2	4.7	4.7	5.1	3.3	3.5
Comanche	2.9	2.5	2.7	3.3	2.2	2.2
Cowley	3.8	3.4	3.5	6.5	3.5	3.0
Crawford	4.2	4.0	4.0	5.5	3.3	2.9
Decatur	3.1	2.9	3.1	3.6	2.7	2.9
Dickinson	3.8	3.5	3.6	4.8	3.1	2.8
Doniphan	3.5	3.6	3.4	4.6	2.9	2.6
Douglas	3.2	3.1	3.0	5.9	3.2	2.6
Edwards	3.1	2.4	2.6	2.9	2.2	2.3
Elk	4.2	3.4	3.9	4.9	3.0	2.7
Ellis	2.5	2.4	2.3	3.4	2.0	2.0
Ellsworth	3.0	2.8	2.9	3.1	2.3	2.3
Finney	2.7	2.5	2.4	3.3	2.2	2.1
Ford	2.8	2.5	2.6	3.3	2.2	2.1
Franklin	3.7	3.6	3.4	5.3	3.2	2.4
Geary	4.9	4.7	4.5	7.0	4.4	3.8
Gove	2.3	2.2	2.1	2.6	1.9	2.1
Graham	3.6	3.1	3.1	4.5	3.0	2.4
Grant	3.2	2.8	2.9	4.0	3.1	2.9
Gray	2.0	2.0	2.1	2.2	1.8	2.0
Greeley	1.8	2.0	2.3	1.7	1.3	1.5
Greenwood	4.2	3.5	3.3	5.3	2.9	2.4
Hamilton	2.4	2.0	1.9	1.6	1.4	1.7
Harper	3.7	2.9	2.6	4.4	2.7	2.1
Harvey	4.1	3.2	3.0	5.3	3.0	2.5
Haskell	2.2	2.2	2.3	2.3	1.8	1.9
Hodgeman	2.5	2.4	2.5	2.5	1.8	2.0
Jackson	3.1	3.0	3.0	5.3	2.7	2.3
Jefferson	3.5	3.2	3.2	4.8	3.0	2.7
Jewell	3.4	2.8	2.9	2.9	2.3	2.6
Johnson	3.0	2.9	2.9	5.0	2.7	2.3
Kearny	2.5	2.3	2.4	2.5	1.7	1.9
Kingman	3.7	3.2	3.3	5.3	3.1	2.4
Kiowa	2.5	2.4	2.4	3.1	2.1	2.2
Labette	4.5	4.0	4.1	5.6	3.5	3.0
Lane	3.3	2.8	2.7	2.9	2.1	2.9
Leavenworth	3.9	3.7	3.6	5.8	3.4	2.9
Lincoln	2.8	2.5	2.4	2.9	2.2	2.4
Linn	5.9	5.9	6.2	7.2	4.4	3.9
Logan	2.1	2.1	2.1	2.4	1.7	1.9
Lyon	3.8	3.5	3.5	4.6	2.9	2.5

**Unemployment Rates in Kansas, by County
2017-2022, Annual Averages**

County	2017	2018	2019	2020	2021	2022
McPherson	2.7	2.5	2.3	3.4	2.2	1.9
Marion	3.6	3.1	3.0	4.0	2.5	2.4
Marshall	2.8	2.6	2.9	3.0	2.0	2.0
Meade	2.4	2.0	2.4	2.7	2.2	1.9
Miami	3.7	3.6	3.4	5.0	3.0	2.6
Mitchell	2.7	2.2	2.4	2.6	2.0	2.0
Montgomery	5.2	4.3	4.2	7.3	4.0	3.1
Morris	3.1	2.7	2.8	3.9	2.4	2.3
Morton	3.7	3.2	3.0	3.0	2.6	2.7
Nemaha	2.4	2.3	2.8	2.8	1.8	1.8
Neosho	5.2	4.9	4.8	6.3	4.3	3.6
Ness	2.9	2.7	2.6	3.4	2.3	2.2
Norton	2.2	2.1	2.3	2.6	1.8	1.9
Osage	3.9	3.8	3.7	5.1	3.0	2.8
Osborne	2.7	2.5	2.0	2.7	1.9	2.0
Ottawa	3.1	2.8	2.8	4.1	2.9	2.5
Pawnee	3.3	3.2	2.9	3.6	2.3	2.4
Phillips	2.9	2.5	2.7	3.3	2.2	2.2
Pottawatomie	3.1	2.8	2.9	4.1	2.6	2.4
Pratt	3.2	2.7	2.6	3.5	2.3	2.1
Rawlins	2.3	2.1	2.3	2.5	1.6	1.8
Reno	3.9	3.6	3.3	5.4	3.3	2.8
Republic	2.8	2.7	2.6	3.2	2.4	2.1
Rice	3.2	2.9	2.9	4.1	2.5	2.3
Riley	3.0	2.9	2.9	4.9	2.9	2.7
Rooks	3.8	3.2	3.6	3.9	2.5	2.6
Rush	3.2	2.8	2.9	4.6	2.5	2.2
Russell	3.3	2.9	3.0	4.1	2.5	2.3
Saline	3.2	3.1	3.1	5.4	3.1	2.4
Scott	2.2	1.9	2.0	2.4	1.6	1.8
Sedgwick	4.2	3.8	3.6	8.8	4.6	3.1
Seward	3.5	3.2	3.2	4.2	2.9	2.6
Shawnee	3.6	3.5	3.4	5.8	3.2	2.7
Sheridan	2.2	2.2	2.3	2.3	1.9	1.9
Sherman	2.9	2.8	2.8	3.3	2.6	2.3
Smith	2.8	2.5	2.5	2.6	1.8	2.0
Stafford	3.3	2.7	2.8	3.6	2.3	2.4
Stanton	2.8	2.6	2.6	2.2	2.0	1.9
Stevens	3.2	2.9	2.7	2.7	2.2	2.0
Sumner	3.8	3.5	3.5	8.2	4.2	3.0
Thomas	2.6	2.5	2.3	2.7	1.9	1.9
Trego	3.3	3.1	3.0	3.4	2.2	2.4
Wabaunsee	3.2	3.1	3.3	4.1	2.5	2.5
Wallace	2.6	2.5	2.7	2.0	1.8	2.0
Washington	3.0	2.7	2.7	2.4	1.8	2.0
Wichita	2.5	2.1	2.0	1.9	2.0	2.0
Wilson	4.7	4.4	4.1	7.8	4.1	3.1
Woodson	4.4	4.4	4.3	6.0	3.5	3.5
Wyandotte	5.2	4.9	4.5	7.9	4.7	3.5
Kansas	3.6	3.4	3.3	5.8	3.3	2.7

Source: Kansas Department of Labor, Kansas Labor Market Information Services in conjunction with U.S. Department of Labor, Bureau of Labor Statistics, <https://klic.dol.ks.gov> (accessed July 21, 2023).

Data revised annually.

**Unemployment Rates in Kansas, by Metropolitan Statistical Area,
Micropolitan Area, and City, 2017-2022, Annual Averages**

Area	2017	2018	2019	2020	2021	2022
Metropolitan Statistical Area						
Kansas City, Kansas MSA	3.5	3.3	3.2	5.6	3.1	2.6
Lawrence MSA	3.2	3.1	3.0	5.9	3.2	2.6
Manhattan MSA	3.0	2.8	2.9	4.7	2.8	2.6
St. Joseph, Kansas MSA	3.5	3.6	3.4	4.6	2.9	2.6
Topeka MSA	3.6	3.5	3.4	5.6	3.1	2.7
Wichita MSA	4.1	3.7	3.5	8.3	4.4	3.0
Micropolitan Area						
Atchison Micropolitan	5.2	4.6	5.4	6.8	3.9	3.5
Coffeyville Micropolitan	5.2	4.3	4.2	7.3	4.0	3.1
Dodge City Micropolitan	2.8	2.5	2.6	3.3	2.2	2.1
Emporia Micropolitan	3.8	3.5	3.5	4.6	2.9	2.5
Garden City Micropolitan	2.7	2.5	2.4	3.2	2.1	2.1
Great Bend Micropolitan	3.6	3.2	3.2	4.6	3.0	2.6
Hays Micropolitan	2.5	2.4	2.3	3.4	2.0	2.0
Hutchinson Micropolitan	3.9	3.6	3.3	5.4	3.3	2.8
Liberal Micropolitan	3.5	3.2	3.2	4.2	2.9	2.6
McPherson Micropolitan	2.7	2.5	2.3	3.4	2.2	1.9
Ottawa Micropolitan	3.7	3.6	3.4	5.3	3.2	2.4
Parsons Micropolitan	4.5	4.0	4.1	5.6	3.5	3.0
Pittsburg Micropolitan	4.2	4.0	4.0	5.5	3.3	2.9
Salina Micropolitan	3.2	3.0	3.1	5.3	3.0	2.4
Winfield Micropolitan	3.8	3.4	3.5	6.5	3.5	3.0
City						
Derby	-	-	-	7.0	3.7	2.8
Dodge City	2.8	2.6	2.6	3.4	2.3	2.1
Emporia	3.8	3.5	3.5	4.7	2.9	2.5
Garden City	2.8	2.5	2.4	3.4	2.2	2.1
Hutchinson	4.1	3.9	3.6	6.0	3.6	3.0
Junction City	4.7	4.6	4.3	7.0	4.2	3.6
Kansas City	5.2	4.9	4.5	8.0	4.8	3.5
Lawrence	3.1	3.0	3.0	6.1	3.2	2.6
Leavenworth	4.4	4.2	4.0	6.7	3.7	3.3
Leawood	2.8	2.7	2.7	4.1	2.4	2.2
Lenexa	3.1	2.9	2.9	5.3	2.8	2.3
Manhattan	2.8	2.6	2.7	4.6	2.6	2.5
Olathe	2.9	2.8	2.7	4.9	2.6	2.2
Overland Park	3.0	2.9	2.9	5.1	2.7	2.4
Salina	3.3	3.2	3.2	5.6	3.2	2.5
Shawnee	3.1	3.1	3.1	5.4	3.0	2.3
Topeka	3.9	3.7	3.7	6.4	3.4	2.9
Wichita	4.4	3.9	3.7	9.3	4.9	3.3

Source: Kansas Department of Labor, Kansas Labor Market Information Services in conjunction with U.S. Department of Labor, Bureau of Labor Statistics, <https://klic.dol.ks.gov> (accessed July 21, 2023).

Data revised annually.

Single dash (-) indicates not available.

Kansas Labor Market Summary, 2021 and 2022

Labor Market Category	2021 Average (thousands)	2022 Average (thousands)	Percent Change 2021-2022
Place of Residence Data			
Civilian Labor Force	1,500.7	1,504.9	0.3
Employment	1,451.2	1,464.8	0.9
Unemployment	49.5	40.1	-19.0
Unemployment Rate	3.3	2.7	-18.2
Place of Work Data by Industry			
Total Nonfarm	1,379.8	1,418.6	2.8
Total Private	1,129.0	1,167.3	3.4
Goods Producing	231.0	240.4	4.1
Natural Resources and Mining	5.9	6.2	5.1
Construction	63.9	64.8	1.4
Construction of Buildings	13.3	13.5	1.5
Heavy and Civil Engineering Construction	10.0	10.0	0.0
Specialty Trade Contractors	40.7	41.3	1.5
Manufacturing	161.2	169.4	5.1
Durable Goods	91.9	98.3	7.0
Machinery Manufacturing	19.4	20.6	6.2
Transportation Equipment Manufacturing	31.0	34.7	11.9
Aerospace Product and Parts Manufacturing	24.6	27.9	13.4
Non-Durable Goods	69.3	71.1	2.6
Food Manufacturing	36.3	36.9	1.7
Animal Slaughtering and Processing	19.3	19.7	2.1
Service-Providing	1,148.8	1,178.2	2.6
Private Service-Providing	898.0	926.9	3.2
Trade, Transportation, and Utilities	267.3	272.7	2.0
Wholesale Trade	55.8	58.2	4.3
Retail Trade	139.3	139.7	0.3
Motor Vehicle and Parts Dealers	18.0	18.2	1.1
Grocery Stores	23.3	22.5	-3.4
General Merchandise Stores	29.7	30.0	1.0
Transportation, Warehousing, and Utilities	72.2	74.9	3.7
Utilities	6.1	6.0	-1.6
Electric Power Generation, Transmission, Distribution	4.3	4.2	-2.3
Transportation and Warehousing	66.1	68.9	4.2
Truck Transportation	16.6	16.9	1.8
Information	16.9	18.2	7.7
Telecommunications	6.9	6.7	-2.9
Financial Activities	76.3	75.8	-0.7
Finance and Insurance	61.3	60.6	-1.1
Credit Intermediation and Related Activities	26.3	25.9	-1.5
Insurance Carriers	28.7	28.1	-2.1
Real Estate and Rental and Leasing	15.0	15.3	2.0

Kansas Labor Market Summary, 2021 and 2022

Labor Market Category	2021 Average (thousands)	2022 Average (thousands)	Percent Change 2021-2022
Professional and Business Services	171.2	181.6	6.1
Professional, Scientific, and Technical Services	72.4	77.5	7.0
Management of Companies and Enterprises	21.0	22.5	7.1
Administrative and Waste Services	77.9	81.6	4.7
Education and Health Services	197.7	200.0	1.2
Educational Services	17.0	15.9	-6.5
Health Care and Social Assistance	180.7	184.1	1.9
Hospitals	50.8	51.9	2.2
Leisure and Hospitality	120.3	128.5	6.8
Arts, Entertainment, and Recreation	15.1	16.6	9.9
Amusement, Gambling, and Recreation Industries	12.7	13.6	7.1
Accommodation and Food Services	105.3	111.9	6.3
Food Services and Drinking Places	96.6	102.2	5.8
Other Services	48.3	50.0	3.5
Government	250.8	251.3	0.2
Federal Government	25.7	25.7	0.0
State Government	48.8	48.4	-0.8
Local Government	176.4	177.2	0.5

Source: Kansas Department of Labor, Labor Market Information Services in conjunction with U.S. Department of Labor, Bureau of Labor Statistics, <https://klic.dol.ks.gov/> (accessed August 2, 2023).

Employment estimates by industry based on the North American Industry Classification System.

Average employment statistics are actual, not seasonally adjusted.

Data revised annually.

Kansas Labor Market Summary, by Metropolitan Area, 2021 and 2022

Metropolitan Area and Labor Market Category	2021 Average	2022 Average	Percent Change 2021-2022
Kansas City MSA			
Civilian Labor Force - Place of Work Data			
Civilian Labor Force	482,921	487,571	1.0
Employment	467,742	475,096	1.6
Unemployment	15,179	12,475	-17.8
Unemployment Rate	3.1	2.6	-16.1
Nonfarm Employment by Industry			
Total Nonfarm	474,600	490,600	3.4
Total Private	417,900	433,400	3.7
Goods Producing	57,100	58,100	1.8
Manufacturing	34,600	34,800	0.6
Durable Goods	19,800	20,400	3.0
Non-Durable Goods	14,800	14,400	-2.7
Service-Providing	417,500	432,500	3.6
Private Service-Providing	360,800	375,300	4.0
Trade, Transportation, and Utilities	107,000	108,800	1.7
Wholesale Trade	24,500	25,400	3.7
Retail Trade	46,300	46,600	0.6
Transportation, Warehousing, Utilities	36,300	36,800	1.4
Information	7,000	7,700	10.0
Telecommunications	2,000	1,800	-10.0
Financial Activities	36,800	34,400	-6.5
Finance and Insurance	30,100	27,700	-8.0
Professional and Business Services	84,300	91,700	8.8
Professional and Technical Services	38,200	41,200	7.9
Management of Companies and Enterprises	10,500	11,800	12.4
Administrative and Waste Services	35,700	38,800	8.7
Education and Health Services	70,000	72,300	3.3
Health Care and Social Assistance	64,500	67,300	4.3
Hospitals	21,800	22,900	5.0
Leisure and Hospitality	38,800	42,600	9.8
Accommodations and Food Services	33,300	36,000	8.1
Other Services	16,900	17,700	4.7
Government	56,700	57,200	0.9
Federal Government	8,200	8,400	2.4
State Government	7,000	7,000	0.0
Local Government	41,500	41,900	1.0
Lawrence MSA			
Civilian Labor Force - Place of Work Data			
Civilian Labor Force	64,798	66,297	2.3
Employment	62,717	64,587	3.0
Unemployment	2,081	1,710	-17.8
Unemployment Rate	3.2	2.6	-18.8
Nonfarm Employment by Industry			
Total Nonfarm	50,100	52,800	5.4
Total Private	35,000	36,800	5.1
Goods Producing	6,200	6,600	6.5
Service-Providing	43,900	46,200	5.2
Private Service-Providing	28,800	30,200	4.9
Trade, Transportation, and Utilities	7,400	7,500	1.4
Retail Trade	5,600	5,700	1.8
Professional and Business Services	5,000	4,900	-2.0
Education and Health Services	5,400	5,500	1.9
Leisure and Hospitality	6,300	7,500	19.0
Government	15,100	16,000	6.0

Kansas Labor Market Summary, by Metropolitan Area, 2021 and 2022

Metropolitan Area and Labor Market Category	2021 Average	2022 Average	Percent Change 2021-2022
Manhattan MSA			
Civilian Labor Force - Place of Work Data			
Civilian Labor Force	46,185	47,140	2.1
Employment	44,893	45,908	2.3
Unemployment	1,292	1,232	-4.6
Unemployment Rate	2.8	2.6	-7.1
Nonfarm Employment by Industry			
Total Nonfarm	39,600	41,200	4.0
Total Private	27,600	28,900	4.7
Goods Producing	5,200	5,200	0.0
Service-Providing	34,400	36,000	4.7
Private Service-Providing	22,400	23,700	5.8
Government	12,000	12,300	2.5
Topeka MSA			
Civilian Labor Force - Place of Work Data			
Civilian Labor Force	121,284	121,323	0.0
Employment	117,525	118,034	0.4
Unemployment	3,759	3,289	-12.5
Unemployment Rate	3.1	3.0	-3.2
Nonfarm Employment by Industry			
Total Nonfarm	109,400	111,700	2.1
Total Private	83,400	86,000	3.1
Goods Producing	13,800	14,200	2.9
Manufacturing	8,200	8,600	4.9
Non-Durable Goods	6,400	6,700	4.7
Service-Providing	95,700	97,500	1.9
Private Service-Providing	69,700	71,800	3.0
Trade, Transportation, and Utilities	17,600	18,300	4.0
Wholesale Trade	2,800	3,000	7.1
Retail Trade	9,800	9,800	0.0
Transportation, Warehousing, Utilities	5,000	5,600	12.0
Information	900	1,000	11.1
Financial Activities	6,900	7,000	1.4
Finance and Insurance	6,000	6,100	1.7
Professional and Business Services	13,300	13,600	2.3
Education and Health Services	18,600	18,800	1.1
Health Care and Social Assistance	18,000	18,100	0.6
Hospitals	7,100	7,000	-1.4
Leisure and Hospitality	7,900	8,400	6.3
Accommodations and Food Services	7,200	7,500	4.2
Other Services	4,500	4,800	6.7
Government	26,000	25,800	-0.8
Federal Government	3,200	3,100	-3.1
State Government	8,700	8,600	-1.1
Local Government	14,100	14,100	0.0

Kansas Labor Market Summary, by Metropolitan Area, 2021 and 2022

Metropolitan Area and Labor Market Category	2021 Average	2022 Average	Percent Change 2021-2022
Wichita MSA			
Civilian Labor Force - Place of Work Data			
Civilian Labor Force	318,474	319,753	0.4
Employment	305,434	310,002	1.5
Unemployment	14,040	9,751	-30.5
Unemployment Rate	4.4	3.0	-31.8
Nonfarm Employment by Industry			
Total Nonfarm	294,100	303,800	3.3
Total Private	252,800	260,900	3.2
Goods Producing	63,100	67,800	7.4
Manufacturing	46,100	50,600	9.8
Durable Goods	38,300	42,200	10.2
Machinery Manufacturing	6,500	6,900	6.2
Transportation Equipment Manufacturing	22,900	26,000	13.5
Aerospace Product and Parts Manufacturing	22,500	25,500	13.3
Nondurable Goods	7,800	8,400	7.7
Service-Providing	231,000	236,000	2.2
Private Service-Providing	189,700	193,000	1.7
Trade, Transportation, and Utilities	50,500	52,100	3.2
Wholesale Trade	8,600	9,100	5.8
Retail Trade	31,200	31,100	-0.3
Transportation, Warehousing, Utilities	10,600	11,800	11.3
Information	3,400	3,700	8.8
Financial Activities	11,800	12,000	1.7
Professional and Business Services	34,600	35,200	1.7
Professional and Technical Services	11,900	12,800	7.6
Administrative and Waste Services	18,000	18,000	0.0
Education and Health Services	46,500	45,700	-1.7
Educational Services	5,100	4,600	-9.8
Health Care and Social Assistance	41,400	41,100	-0.7
Hospitals	9,800	9,500	-3.1
Leisure and Hospitality	31,400	32,700	4.1
Accommodations and Food Services	26,200	27,800	6.1
Other Services	11,500	11,600	0.9
Government	41,300	43,000	4.1
Federal Government	5,100	5,100	0.0
State Government	6,400	6,600	3.1
Local Government	29,900	31,300	4.7

Source: Kansas Department of Labor, Labor Market Information Services in conjunction with U.S. Department of Labor, Bureau of Labor Statistics, <https://klic.dol.ks.gov> (accessed August 2, 2023).

Employment estimates by industry based on the North American Industry Classification System.

Average employment statistics are actual, not seasonally adjusted.

Data revised annually.

Mid-March Employment in Kansas, by Industry and County, 2021 (Part 1 of 2)

County	Total	AFFH	Mining	Utilities	Construction	Manufacturing	Wholesale Trade	Retail Trade	Transportation	Information	Finance and Insurance
Allen	4,147	-	133	16	91	1,635	141	566	75	117	110
Anderson	1,315	-	30	-	110	91	79	217	39	-	105
Atchison	4,984	-	-	-	279	754	314	584	80	24	118
Barber	1,149	-	108	-	28	171	66	237	27	33	31
Barton	9,468	7	346	149	717	998	540	1,409	285	94	540
Bourbon	4,237	-	7	-	207	1,265	354	708	69	38	201
Brown	3,267	-	-	-	92	763	171	319	150	61	200
Butler	13,387	-	79	87	1,100	1,616	537	1,992	460	35	444
Chase	465	-	-	-	33	134	-	45	49	-	11
Chautauqua	452	-	36	-	28	56	-	71	-	-	33
Cherokee	4,909	-	127	46	769	1,519	119	438	47	27	128
Cheyenne	557	-	-	-	23	-	88	73	-	-	37
Clark	438	-	7	-	-	-	14	42	-	-	31
Clay	2,104	-	-	-	107	271	165	418	48	38	100
Cloud	2,614	-	-	18	95	276	239	464	53	52	80
Coffey	2,662	-	37	909	88	145	86	321	134	54	100
Comanche	399	-	7	-	10	46	-	65	-	6	21
Cowley	11,410	-	32	-	259	4,528	208	1,391	85	82	335
Crawford	14,680	-	28	72	921	2,978	842	1,946	191	341	304
Decatur	529	-	-	-	12	-	93	75	11	-	40
Dickinson	4,834	-	-	69	190	1,393	372	763	167	23	197
Doniphan	1,606	7	-	-	126	379	60	147	140	-	51
Douglas	34,915	-	117	154	1,994	3,754	802	6,190	624	401	1,254
Edwards	511	-	-	-	9	111	97	60	-	-	23
Elk	297	-	5	-	-	-	-	58	4	-	10
Ellis	12,365	9	390	191	628	909	656	1,995	423	366	433
Ellsworth	1,708	-	-	-	71	385	75	194	233	57	98
Finney	15,005	92	157	282	801	3,729	759	2,553	476	87	453
Ford	14,599	-	-	172	504	6,386	773	1,606	439	71	293
Franklin	8,975	-	26	-	591	812	156	1,183	2,174	35	141
Geary	7,831	-	-	68	155	735	81	1,206	782	60	251
Gove	908	-	19	-	48	92	65	149	22	7	36
Graham	522	-	12	-	38	-	34	67	4	22	28
Grant	1,962	-	82	84	146	156	111	277	70	76	246
Gray	1,487	5	-	29	315	118	174	173	39	10	80
Greeley	332	-	-	-	14	-	25	87	-	-	26
Greenwood	1,087	-	70	-	70	43	63	178	162	16	49
Hamilton	523	12	-	-	4	-	113	64	72	-	76

Mid-March Employment in Kansas, by Industry and County, 2021 (Part 1 of 2)

County	Total	AFFH	Mining	Utilities	Construction	Manufacturing	Wholesale Trade	Retail Trade	Transportation	Information	Finance and Insurance
Harper	1,827	-	25	19	26	520	81	270	143	-	85
Harvey	12,561	-	36	-	709	3,611	292	1,317	107	23	300
Haskell	853	-	-	-	62	98	133	102	42	-	31
Hodgeman	278	-	-	-	-	-	51	35	48	-	26
Jackson	3,090	-	-	-	121	246	95	363	24	43	111
Jefferson	2,099	-	-	-	379	225	45	263	49	11	78
Jewell	437	-	-	-	11	-	75	57	28	-	24
Johnson	340,364	20	177	583	20,866	24,172	21,367	38,272	20,841	10,411	33,523
Kearny	707	47	2	-	23	-	3	91	50	-	76
Kingman	1,819	-	37	30	162	367	186	264	31	12	87
Kiowa	779	-	6	-	29	-	41	63	40	-	26
Labette	6,864	-	-	49	91	1,795	251	853	356	68	251
Lane	295	8	-	-	-	-	33	28	6	-	25
Leavenworth	13,844	25	5	48	1,343	1,153	116	2,099	359	74	658
Lincoln	573	-	-	-	43	-	74	63	-	-	44
Linn	1,525	-	30	468	164	156	17	243	35	29	77
Logan	660	6	-	-	76	-	85	99	5	8	56
Lyon	11,916	-	10	53	305	3,883	469	1,713	330	161	297
McPherson	14,421	-	85	-	771	5,268	423	1,131	190	78	634
Marion	2,511	-	7	-	96	323	136	250	26	32	89
Marshall	3,869	-	-	36	199	1,204	234	612	78	92	200
Meade	820	3	20	-	134	25	87	119	15	-	73
Miami	6,635	7	48	-	791	464	96	986	215	40	250
Mitchell	2,333	-	-	-	138	286	267	320	76	75	138
Montgomery	11,416	-	20	-	440	3,500	274	1,320	442	61	349
Morris	1,227	-	-	-	65	206	33	143	15	154	45
Morton	549	-	30	-	6	-	59	48	56	74	53
Nemaha	4,564	110	-	-	188	1,050	369	450	430	23	169
Neosho	4,701	10	61	-	186	941	303	796	92	42	254
Ness	835	-	146	-	17	25	131	55	40	-	45
Norton	1,641	-	19	-	55	221	81	189	-	84	71
Osage	1,676	-	-	-	145	158	57	326	14	-	111
Osborne	959	-	18	-	15	96	150	133	72	6	51
Ottawa	820	10	-	-	29	51	175	84	17	-	72
Pawnee	1,829	-	-	-	72	45	58	161	8	-	47
Phillips	1,519	-	14	-	63	156	58	270	82	28	113
Pottawatomie	9,204	17	-	-	858	1,643	736	1,587	285	138	269
Pratt	3,164	9	180	-	153	101	284	617	48	26	141

Mid-March Employment in Kansas, by Industry and County, 2021 (Part 1 of 2)

County	Total	AFFH	Mining	Utilities	Construction	Manufacturing	Wholesale Trade	Retail Trade	Transportation	Information	Finance and Insurance
Rawlins	704	-	-	-	56	68	139	112	3	9	34
Reno	21,460	10	19	97	876	3,424	969	2,943	1,072	526	867
Republic	1,196	-	-	-	12	153	146	186	15	11	63
Rice	2,416	-	77	-	68	493	183	214	109	44	111
Riley	19,457	-	155	100	1,305	462	298	3,796	166	822	803
Rooks	1,225	-	53	7	61	109	137	180	68	13	65
Rush	746	-	-	-	29	181	97	84	58	42	41
Russell	1,775	-	115	-	70	249	115	214	71	66	69
Saline	25,409	-	-	71	1,099	5,296	1,149	3,664	1,319	150	754
Scott	1,462	9	-	-	91	50	136	126	45	6	96
Sedgwick	224,582	10	611	886	14,853	39,774	9,388	27,734	9,206	4,334	7,050
Seward	8,862	-	170	61	196	3,081	297	1,126	865	61	143
Shawnee	73,975	33	-	1,234	4,535	7,208	2,310	9,180	2,931	1,492	5,700
Sheridan	689	-	-	-	48	-	121	81	41	-	51
Sherman	1,766	5	-	-	50	50	231	335	88	52	91
Smith	842	-	-	-	37	39	121	193	-	24	56
Stafford	590	29	21	-	30	-	44	87	30	-	49
Stanton	483	-	-	-	-	-	79	62	49	-	38
Stevens	1,078	25	-	-	52	73	91	155	111	-	82
Sumner	3,833	10	21	-	121	621	145	565	264	103	184
Thomas	2,837	-	-	34	132	110	336	623	129	64	145
Trego	791	-	3	-	20	36	61	108	20	10	32
Wabaunsee	1,025	-	55	-	122	383	32	93	30	-	40
Wallace	299	-	-	-	10	-	40	51	5	-	21
Washington	1,464	-	-	-	82	192	127	178	53	-	72
Wichita	488	-	-	15	28	55	72	70	22	-	23
Wilson	3,277	-	30	-	888	1,045	39	243	20	-	66
Woodson	395	-	53	-	13	-	70	57	6	-	22
Wyandotte	69,988	-	-	-	4,759	9,787	6,620	7,248	10,949	395	1,109
Kansas	1,188,432	946	5,094	7,382	69,246	161,437	60,747	143,852	64,704	23,291	67,424

Source: U.S. Census Bureau, County Business Patterns, <https://www.census.gov/programs-surveys/cbp.html> (accessed July 3, 2023).

Single dash (-) indicates not available or represents zero. Beginning with the 2017 data, any tabulation with fewer than 3 establishments were omitted from the release. Data for these establishments are included in the broader total.

Industry Description: AFFH=Agriculture, forestry, fishing and hunting; Mining=Mining, quarrying, and oil and gas extraction; and Transportation=Transportation and warehousing.

Mid-March Employment in Kansas, by Industry and County, 2021 (Part 2 of 2)

County	Accommod. and Other Services									
	Real Estate	Prof. Services	Management	Admin. Support	Educational Services	Health Care	Arts and Recreation	Food Service	Other Services	Unclassified
Allen	48	91	-	52	-	595	17	356	103	-
Anderson	9	36	-	4	-	346	-	161	69	-
Atchison	25	91	-	68	903	897	89	455	218	-
Barber	2	23	-	14	-	271	3	51	53	1
Barton	124	434	-	331	38	2,161	61	800	417	-
Bourbon	22	80	71	21	-	599	-	362	150	-
Brown	10	97	-	18	13	708	340	187	112	-
Butler	197	679	48	587	124	2,663	316	1,783	637	-
Chase	-	28	-	-	-	-	-	41	15	-
Chautauqua	-	-	-	-	-	121	-	50	20	-
Cherokee	14	84	349	174	-	531	32	383	122	-
Cheyenne	1	21	-	-	-	201	-	58	26	-
Clark	-	22	14	-	-	215	7	10	15	-
Clay	9	62	-	33	10	405	17	235	174	-
Cloud	4	78	-	87	-	606	8	351	194	-
Coffey	-	56	-	20	-	426	-	141	131	-
Comanche	-	8	-	-	-	141	-	38	21	-
Cowley	39	215	-	249	538	1,961	43	1,038	369	-
Crawford	92	332	499	408	719	2,600	141	1,805	458	-
Decatur	14	30	-	-	-	154	-	57	18	-
Dickinson	19	106	-	81	-	796	73	312	214	-
Doniphan	27	11	-	105	-	138	-	98	56	-
Douglas	656	2,324	432	1,196	966	6,005	605	5,752	1,687	-
Edwards	-	11	-	-	-	103	-	40	18	-
Elk	-	7	-	-	-	16	-	114	23	-
Ellis	143	309	69	200	110	3,065	85	1,815	567	-
Ellsworth	-	91	-	30	-	225	20	97	56	-
Finney	161	232	-	580	30	2,055	333	1,673	543	-
Ford	94	475	120	727	55	1,018	99	1,357	395	-
Franklin	57	125	-	67	877	1,521	52	843	283	-
Geary	264	254	228	626	23	1,293	74	1,221	508	-
Gove	-	12	-	33	-	196	-	137	79	-
Graham	-	5	-	-	-	184	-	30	39	-
Grant	14	34	-	57	-	220	-	263	81	-
Gray	21	44	-	66	29	185	-	79	90	-
Greeley	-	12	-	-	-	140	-	-	15	-
Greenwood	-	40	-	-	-	262	-	75	38	-
Hamilton	-	-	-	65	-	25	-	49	23	-
Harper	3	44	-	29	-	375	-	94	60	-
Harvey	43	243	-	811	631	2,805	111	942	515	-

Mid-March Employment in Kansas, by Industry and County, 2021 (Part 2 of 2)

County	Accommod. and Other Services									
	Real Estate	Prof. Services	Management	Admin. Support	Educational Services	Health Care	Arts and Recreation	Food Service	Other Services	Unclassified
Haskell	-	16	-	-	-	198	11	50	55	-
Hodgeman	-	-	-	18	-	70	-	-	13	-
Jackson	47	77	-	390	-	531	19	872	127	-
Jefferson	12	91	-	153	14	281	27	126	121	5
Jewell	-	9	-	6	-	89	-	36	17	-
Johnson	5,417	36,198	10,339	26,353	5,952	42,455	4,373	26,376	12,659	10
Kearny	5	11	-	-	-	302	-	57	24	-
Kingman	7	32	-	18	-	339	-	157	67	-
Kiowa	-	-	-	12	-	183	-	55	95	-
Labette	34	89	77	40	-	2,242	14	384	249	-
Lane	-	24	-	-	-	70	-	25	14	-
Leavenworth	229	1,327	36	615	575	2,428	156	1,740	857	-
Lincoln	-	12	-	25	-	134	6	54	31	-
Linn	8	18	-	36	-	82	15	66	80	-
Logan	-	20	-	-	-	167	16	63	43	-
Lyon	119	206	24	609	65	1,884	98	1,293	396	-
McPherson	106	330	225	229	767	2,359	170	961	600	-
Marion	13	90	12	33	369	601	-	236	191	-
Marshall	6	127	19	118	26	537	18	234	122	-
Meade	-	30	-	-	-	162	-	35	55	-
Miami	124	306	4	239	29	1,910	35	650	418	-
Mitchell	27	76	-	18	-	508	58	158	125	-
Montgomery	54	213	57	349	-	2,870	37	985	335	-
Morris	-	50	-	19	-	299	12	122	48	-
Morton	-	11	-	-	-	152	-	33	23	-
Nemaha	-	128	25	167	201	824	-	222	177	-
Neosho	31	132	9	103	-	1,098	30	413	197	-
Ness	-	24	-	-	-	239	-	20	60	-
Norton	-	29	-	1	-	497	8	153	56	-
Osage	9	57	-	37	-	412	17	213	80	-
Osborne	-	46	-	44	-	196	-	50	59	-
Ottawa	4	54	-	14	-	227	4	32	47	-
Pawnee	11	54	-	41	-	1,063	-	205	45	-
Phillips	-	100	-	76	-	285	4	99	114	-
Pottawatomie	88	242	-	226	59	1,575	69	561	531	-
Pratt	19	105	67	38	-	644	34	511	142	-
Rawlins	-	12	-	6	-	193	-	24	34	-
Reno	220	618	655	1,471	167	3,947	397	2,298	883	-
Republic	-	29	-	8	-	345	13	108	69	-
Rice	6	120	-	39	-	239	8	200	122	-

Mid-March Employment in Kansas, by Industry and County, 2021 (Part 2 of 2)

County	Accommod. and Food Service									
	Real Estate	Prof. Services	Management	Admin. Support	Educational Services	Health Care	Arts and Recreation	and Food Service	Other Services	Unclassified
Riley	665	953	146	727	369	3,536	350	3,595	1,179	-
Rooks	-	48	-	14	-	260	16	51	115	-
Rush	-	18	-	-	-	119	-	44	28	-
Russell	8	63	-	56	-	313	13	285	66	-
Saline	197	1,212	379	999	295	4,624	544	2,511	1,138	-
Scott	5	47	-	31	-	510	4	165	93	-
Sedgwick	3,286	11,050	7,689	14,198	4,138	34,706	3,296	23,239	9,127	7
Seward	67	110	-	432	-	1,121	55	821	217	-
Shawnee	877	3,465	995	4,213	762	18,365	670	6,441	3,559	-
Sheridan	-	29	-	-	-	163	3	67	39	-
Sherman	11	46	-	23	-	359	-	311	87	-
Smith	-	13	-	14	-	234	-	30	62	-
Stafford	-	16	-	15	-	150	-	47	31	-
Stanton	-	10	-	-	-	-	-	18	41	-
Stevens	-	13	-	15	-	219	6	103	73	-
Sumner	35	103	-	219	24	715	18	409	237	-
Thomas	24	82	-	47	-	536	-	357	154	-
Trego	2	19	-	-	-	249	-	135	41	-
Wabaunsee	1	1	-	32	-	94	6	70	55	-
Wallace	6	17	-	-	-	51	-	16	18	-
Washington	7	43	-	10	-	346	-	75	131	-
Wichita	-	4	-	-	-	105	-	41	31	-
Wilson	7	36	-	52	-	564	-	186	78	-
Woodson	-	5	-	-	-	75	-	42	20	-
Wyandotte	818	1,461	614	3,636	383	14,130	591	5,136	2,341	3
Kansas	14,788	69,169	23,861	92,953	20,479	191,385	13,926	110,604	47,048	96

Source: U.S. Census Bureau, County Business Patterns, <https://www.census.gov/programs-surveys/cbp.html> (accessed July 3, 2023).

Single dash (-) indicates not available or represents zero. Beginning with the 2017 data, any tabulation with fewer than 3 establishments were omitted from the release. Data for these establishments are included in the broader total.

Industry Description: Real Estate=Real estate and rental and leasing; Prof. Services=Professional, scientific, and technical services; Management=Management of companies and enterprises; Admin. Support=Administrative and support and waste management and remediation services; Health Care=Health care and social assistance; Arts and Recreation=Arts, entertainment, and recreation; Accommod. and Food Service=Accommodation and food service; and Other Services=Other services (except public administration).

Farm and Nonfarm Employment in Kansas, by County, 2019-2021

County	2019		2020		2021	
	Farm	Nonfarm	Farm	Nonfarm	Farm	Nonfarm
Allen	555	7,576	556	7,327	563	7,571
Anderson	646	3,321	647	3,376	656	3,711
Atchison	587	7,511	591	7,236	601	7,361
Barber	412	2,924	416	2,880	426	2,856
Barton	746	17,704	757	17,540	778	17,252
Bourbon	814	8,277	817	8,131	825	8,039
Brown	506	6,526	513	6,070	527	6,165
Butler	1,255	28,559	1,261	28,460	1,282	28,975
Chase	260	1,466	263	1,345	269	1,309
Chautauqua	304	1,396	306	1,422	311	1,405
Cherokee	706	8,094	712	7,820	724	7,765
Cheyenne	436	1,298	443	1,279	453	1,271
Clark	317	1,063	322	1,128	331	1,116
Clay	548	4,215	555	4,193	566	4,240
Cloud	442	4,615	444	4,587	451	4,678
Coffey	618	5,079	619	4,978	628	5,089
Comanche	269	937	273	906	279	941
Cowley	959	17,923	963	17,812	979	18,071
Crawford	812	22,671	818	22,215	831	22,654
Decatur	301	1,314	305	1,283	314	1,277
Dickinson	974	8,610	981	8,357	1,000	8,770
Doniphan	401	3,231	405	3,233	414	3,341
Douglas	880	73,787	884	70,086	897	71,260
Edwards	334	1,330	341	1,332	351	1,334
Elk	306	1,063	308	1,069	314	1,071
Ellis	635	24,258	638	24,017	650	24,230
Ellsworth	396	3,342	399	3,242	406	3,229
Finney	745	23,992	769	23,472	805	23,385
Ford	739	20,819	751	20,648	773	21,242
Franklin	987	12,870	994	12,780	1,012	13,279
Geary	222	32,717	225	32,701	230	32,556
Gove	452	1,934	460	1,848	475	1,850
Graham	399	1,458	402	1,497	410	1,498
Grant	463	3,741	476	3,552	497	3,410
Gray	716	3,982	739	3,894	775	3,856
Greeley	334	847	343	862	356	868
Greenwood	574	2,808	581	2,666	595	2,609
Hamilton	588	1,195	606	1,209	634	1,246
Harper	493	3,707	498	3,508	507	3,499
Harvey	707	19,288	712	18,821	724	19,164
Haskell	730	2,194	766	2,170	818	2,145
Hodgeman	455	844	464	892	479	912
Jackson	945	5,841	945	5,658	956	5,764
Jefferson	890	5,973	891	5,865	901	6,041
Jewell	486	1,261	493	1,215	506	1,210
Johnson	600	472,930	608	463,235	623	475,261
Kearny	560	1,772	577	1,735	604	1,765
Kingman	784	3,676	789	4,306	801	4,173
Kiowa	385	1,690	387	1,626	395	1,609
Labette	885	12,675	887	12,003	899	11,934
Lane	343	894	350	896	360	885
Leavenworth	1,061	32,938	1,066	32,474	1,080	32,795
Lincoln	387	1,366	388	1,389	394	1,348
Linn	811	3,227	812	3,263	822	3,313
Logan	312	1,880	315	1,841	321	1,856

Farm and Nonfarm Employment in Kansas, by County, 2019-2021

County	2019		2020		2021	
	Farm	Nonfarm	Farm	Nonfarm	Farm	Nonfarm
Lyon	926	20,133	931	19,759	948	20,329
McPherson	1,080	21,105	1,086	20,549	1,105	20,730
Marion	929	5,583	933	5,427	946	5,513
Marshall	749	6,512	750	6,400	763	6,400
Meade	580	2,135	596	2,090	619	2,123
Miami	1,228	13,413	1,230	13,274	1,247	13,481
Mitchell	448	4,353	455	4,430	466	4,444
Montgomery	971	18,383	975	17,626	990	17,925
Morris	471	2,378	475	2,428	485	2,474
Morton	487	1,315	503	1,341	524	1,348
Nemaha	921	6,486	931	6,658	955	6,773
Neosho	632	8,503	633	8,388	640	8,404
Ness	517	1,950	519	1,943	525	1,906
Norton	388	3,174	394	3,086	406	3,116
Osage	921	4,645	922	4,652	934	4,778
Osborne	326	2,209	328	2,147	333	2,149
Ottawa	507	2,126	511	2,015	521	2,021
Pawnee	460	3,495	469	3,374	482	3,362
Phillips	502	3,192	510	3,176	524	3,206
Pottawatomie	841	13,575	845	13,554	860	13,814
Pratt	582	6,290	590	6,219	608	6,219
Rawlins	325	1,447	331	1,500	340	1,579
Reno	1,552	34,924	1,567	34,073	1,598	34,645
Republic	633	2,554	641	2,628	659	2,678
Rice	678	5,118	692	4,893	716	5,150
Riley	521	43,481	528	41,267	542	41,933
Rooks	462	3,103	469	3,073	480	3,008
Rush	470	1,639	472	1,603	479	1,628
Russell	495	4,523	498	4,570	506	4,584
Saline	626	37,841	629	35,877	639	36,683
Scott	518	2,856	540	2,858	571	2,867
Sedgwick	1,341	339,744	1,350	327,320	1,372	334,990
Seward	463	13,265	474	13,317	492	13,517
Shawnee	734	120,184	734	116,988	744	119,580
Sheridan	442	1,657	452	1,670	466	1,668
Sherman	421	3,493	427	3,472	440	3,466
Smith	493	1,988	500	1,982	511	2,010
Stafford	551	2,031	559	2,089	574	2,033
Stanton	384	1,138	393	1,227	408	1,255
Stevens	461	2,583	472	2,672	490	2,726
Sumner	1,045	9,733	1,052	9,170	1,068	9,085
Thomas	562	5,613	574	5,444	596	5,482
Trego	383	1,890	387	1,900	395	1,869
Wabaunsee	587	2,272	590	2,294	600	2,274
Wallace	281	892	285	912	291	915
Washington	777	2,802	787	2,935	807	2,952
Wichita	345	1,250	355	1,059	370	990
Wilson	374	4,771	375	4,470	379	4,537
Woodson	295	1,333	296	1,308	300	1,291
Wyandotte	143	109,550	143	106,640	145	106,386
Kansas	63,300	1,861,239	63,989	1,815,097	65,437	1,846,750

Source: U.S. Bureau of Economic Analysis, Regional Economic Accounts, Local Area Personal Income, Table CA25N, <https://www.bea.gov/itable/> (accessed August 2, 2023).

Based on North American Industry Classification System (NAICS) codes.

Number of jobs includes full-time and part-time employment.

Data revised annually.

Average Annual Wages, by State, 2019-2022

State	2019	2020	2021	2022	Percent Change 2021-2022
Alabama	\$48,839	\$52,210	\$54,358	\$57,340	5.5
Alaska	57,518	61,730	62,681	65,297	4.2
Arizona	53,807	58,426	61,750	64,724	4.8
Arkansas	45,448	48,672	51,519	54,012	4.8
California	71,351	79,480	85,741	84,376	-1.6
Colorado	61,820	66,649	70,563	74,407	5.4
Connecticut	69,771	75,317	77,840	81,237	4.4
Delaware	58,479	62,462	64,484	67,877	5.3
District of Columbia	98,051	107,075	112,148	113,970	1.6
Florida	51,741	55,868	60,276	63,762	5.8
Georgia	55,263	58,884	62,242	65,820	5.7
Hawaii	52,686	57,934	59,644	61,483	3.1
Idaho	44,264	47,685	50,744	54,188	6.8
Illinois	61,572	66,279	70,127	72,767	3.8
Indiana	48,793	51,957	54,968	58,061	5.6
Iowa	48,672	52,333	54,293	57,375	5.7
Kansas	48,060	51,490	53,422	56,191	5.2
Kentucky	47,723	50,794	52,862	55,782	5.5
Louisiana	49,286	51,964	53,838	56,605	5.1
Maine	47,188	51,952	54,651	58,132	6.4
Maryland	62,976	68,879	71,688	73,609	2.7
Massachusetts	75,404	83,738	87,752	89,731	2.3
Michigan	54,972	59,432	61,683	63,881	3.6
Minnesota	59,630	64,191	67,009	69,723	4.1
Mississippi	40,687	43,222	44,958	47,420	5.5
Missouri	50,536	54,046	56,456	59,225	4.9
Montana	44,883	48,443	51,319	54,525	6.2
Nebraska	47,854	51,488	53,853	57,287	6.4
Nevada	51,422	55,996	59,463	61,976	4.2
New Hampshire	58,671	64,888	72,063	72,217	0.2
New Jersey	67,364	73,974	76,340	78,549	2.9
New Mexico	47,043	50,369	52,522	55,333	5.4
New York	75,365	83,122	88,035	89,564	1.7
North Carolina	52,379	56,214	59,594	63,181	6.0
North Dakota	54,102	55,465	56,851	60,215	5.9
Ohio	52,125	55,872	58,350	61,000	4.5
Oklahoma	48,023	49,566	51,317	53,989	5.2
Oregon	55,023	59,938	63,989	66,344	3.7
Pennsylvania	57,497	62,049	64,697	67,281	4.0
Rhode Island	54,918	60,508	62,280	64,501	3.6
South Carolina	46,383	49,554	52,295	55,542	6.2
South Dakota	45,150	49,167	51,254	54,057	5.5
Tennessee	51,702	55,137	59,147	62,097	5.0
Texas	59,794	62,872	65,970	69,609	5.5
Utah	50,766	54,890	57,837	61,178	5.8
Vermont	49,337	54,084	56,296	59,584	5.8
Virginia	60,200	65,159	67,990	71,136	4.6
Washington	69,593	76,791	82,477	83,987	1.8
West Virginia	46,618	48,741	50,498	53,172	5.3
Wisconsin	50,413	53,809	56,350	59,229	5.1
Wyoming	49,880	50,986	53,022	56,330	6.2
United States	\$59,209	\$64,021	\$67,610	\$69,985	3.5

Source: U.S. Bureau of Labor Statistics, Quarterly Census of Employment and Wages (QCEW), <https://www.bls.gov/cew/> (accessed August 2, 2023).

Includes workers covered by Unemployment Insurance and Unemployment Compensation for Federal Employees programs.

Average Annual Wages by Industry, Kansas and the U.S., 2019-2022

Area and Industry	2019	2020	2021	2022	Percent Change 2021-2022
Kansas					
Private Industry*	\$48,852	\$52,749	\$54,784	\$57,655	5.2
Agriculture, Forestry, Fishing, and Hunting	42,270	43,754	45,527	48,210	5.9
Mining, Quarrying, and Oil and Gas Extraction	58,134	56,406	60,094	67,386	12.1
Utilities	98,245	104,225	103,121	106,927	3.7
Construction	57,030	59,126	60,815	63,821	4.9
Manufacturing	59,652	62,958	64,603	68,581	6.2
Wholesale Trade	72,632	75,220	79,506	83,859	5.5
Retail Trade	27,994	30,129	32,001	33,856	5.8
Transportation and Warehousing	46,815	48,996	49,824	53,462	7.3
Information	66,434	73,749	81,217	86,113	6.0
Finance and Insurance	75,897	83,456	90,524	88,882	-1.8
Real Estate and Rental and Leasing	43,482	46,845	49,482	52,719	6.5
Professional and Technical Services	72,060	76,403	81,935	86,183	5.2
Management of Companies and Enterprises	111,449	133,003	124,363	134,805	8.4
Administrative and Waste Services	40,706	42,952	47,057	50,426	7.2
Educational Services	36,510	39,110	40,348	39,763	-1.4
Health Care and Social Assistance	44,502	49,188	51,763	54,623	5.5
Arts, Entertainment, and Recreation	20,333	22,185	23,133	24,705	6.8
Accommodation and Food Services	16,882	17,536	19,540	20,687	5.9
Other Services, except Public Administration	35,624	38,965	41,079	43,250	5.3
Government	44,369	45,704	47,065	49,150	4.4
Federal	70,165	71,190	73,822	77,738	5.3
State	58,381	52,822	54,281	57,643	6.2
Local	37,494	40,153	41,485	43,051	3.8
United States					
Private Industry*	\$59,202	\$64,247	\$68,029	\$70,343	3.4
Agriculture, Forestry, Fishing, and Hunting	37,212	39,777	41,740	43,550	4.3
Mining, Quarrying, and Oil and Gas Extraction	107,986	110,284	109,498	118,101	7.9
Utilities	113,354	117,180	119,705	124,033	3.6
Construction	64,826	67,357	69,855	73,444	5.1
Manufacturing	69,920	73,397	76,580	79,476	3.8
Wholesale Trade	80,193	84,221	90,348	94,891	5.0
Retail Trade	33,611	36,759	39,741	40,466	1.8
Transportation and Warehousing	54,365	55,337	57,956	60,501	4.4
Information	119,605	136,324	152,651	145,234	-4.9
Finance and Insurance	112,656	121,538	131,621	132,798	0.9
Real Estate and Rental and Leasing	61,336	65,183	69,893	73,928	5.8
Professional and Technical Services	100,699	107,153	114,364	117,079	2.4
Management of Companies and Enterprises	126,310	132,370	141,628	144,589	2.1
Administrative and Waste Services	43,026	46,481	50,166	54,554	8.7
Educational Services	52,658	57,189	58,442	59,926	2.5
Health Care and Social Assistance	51,792	55,077	58,073	61,058	5.1
Arts, Entertainment, and Recreation	40,056	45,676	46,244	48,579	5.0
Accommodation and Food Services	22,491	22,784	25,659	27,453	7.0
Other Services, except Public Administration	39,922	44,084	46,122	48,528	5.2
Government	59,249	62,765	65,170	67,821	4.1
Federal	84,310	85,467	89,205	92,770	4.0
State	62,830	65,762	68,835	72,813	5.8
Local	53,112	56,884	58,870	61,044	3.7

Source: U.S. Bureau of Labor Statistics, Quarterly Census of Employment and Wages (QCEW), <https://www.bls.gov/cew/> (accessed August 2, 2023).

Includes workers covered by Unemployment Insurance and Unemployment Compensation for Federal Employees programs.

* Includes other industries, not shown separately.

**Workers with Earnings at or below the Federal Minimum Wage, by State
2022 Annual Averages**

State	Number of Workers, 16 Years and Over (thousands)				Percent of	Rank
	Total Paid Hourly Rates	At Minimum Wage	Below Minimum Wage	Total At or Below Minimum Wage	Hourly Workers At or Below Minimum Wage	
Alabama	1,173	1	9	10	0.9	36
Alaska	198	0	1	1	0.5	45
Arizona	1,809	4	7	12	0.6	43
Arkansas	745	0	9	9	1.2	25
California	9,266	13	37	50	0.5	45
Colorado	1,273	0	7	7	0.5	45
Connecticut	891	1	0	1	0.1	51
Delaware	268	0	3	3	1.0	35
District of Columbia	84	0	2	2	2.7	2
Florida	5,012	1	84	85	1.7	13
Georgia	2,342	3	32	36	1.5	18
Hawaii	327	0	1	1	0.3	50
Idaho	537	1	6	7	1.2	25
Illinois	2,870	2	21	23	0.8	38
Indiana	1,784	4	32	36	2.0	6
Iowa	975	1	19	20	2.0	6
Kansas	770	1	8	10	1.2	25
Kentucky	1,061	4	8	12	1.2	25
Louisiana	1,062	7	23	30	2.8	1
Maine	318	0	3	3	0.9	36
Maryland	1,356	2	13	14	1.1	33
Massachusetts	1,580	3	17	20	1.3	23
Michigan	2,519	4	36	40	1.6	15
Minnesota	1,601	2	18	20	1.2	25
Mississippi	692	3	14	17	2.5	3
Missouri	1,611	0	21	21	1.3	23
Montana	315	0	3	3	0.8	38
Nebraska	565	1	9	11	1.9	12
Nevada	881	0	4	4	0.4	48
New Hampshire	387	1	4	5	1.2	25
New Jersey	1,904	4	28	33	1.7	13
New Mexico	457	0	6	7	1.5	18
New York	4,073	3	28	31	0.8	38
North Carolina	2,388	5	50	54	2.3	5
North Dakota	222	1	2	3	1.2	25
Ohio	3,270	2	50	52	1.6	15
Oklahoma	935	1	12	13	1.4	22
Oregon	1,024	0	4	4	0.4	48
Pennsylvania	3,245	17	46	63	2.0	6
Rhode Island	282	1	6	7	2.5	3
South Carolina	1,213	5	19	24	2.0	6
South Dakota	276	1	2	3	1.1	33
Tennessee	1,557	5	26	31	2.0	6
Texas	6,509	17	81	98	1.5	18
Utah	862	2	3	6	0.7	42
Vermont	159	0	1	1	0.8	38
Virginia	1,843	7	29	36	2.0	6
Washington	1,975	1	11	12	0.6	43
West Virginia	432	0	5	5	1.2	25
Wisconsin	1,668	7	21	27	1.6	15
Wyoming	162	1	2	2	1.5	18
United States	78,729	141	882	1,023	1.3	

Source: U.S. Department of Labor, Bureau of Labor Statistics, Characteristics of Minimum Wage Workers, 2022, <https://www.bls.gov/opub/reports/minimum-wage/2022/home.htm> (accessed August 28, 2023).

Data exclude all self-employed persons whether or not their businesses are incorporated.

Rank based on percent of hourly workers at or below minimum wage.

Data may not sum to totals due to rounding.

**Average Wage per Job in Kansas, by County
Full- and Part-Time by Place of Work, 2012-2021**

County	2012	2013	2014	2015	2016	2017	2018	2019	2020	2021
Allen	\$35,510	\$36,304	\$35,972	\$36,502	\$35,601	\$37,329	\$39,388	\$42,390	\$44,355	\$46,640
Anderson	38,146	40,227	40,981	39,182	40,736	38,221	38,121	37,973	45,856	52,777
Atchison	37,762	39,805	39,709	40,723	40,637	44,632	45,926	48,136	49,053	51,228
Barber	39,346	44,059	38,985	29,783	28,147	27,632	32,240	30,281	35,021	37,112
Barton	44,477	46,323	48,394	41,758	39,377	39,776	41,520	43,977	43,355	44,069
Bourbon	37,663	38,202	38,791	40,270	41,104	43,141	48,112	43,289	45,693	46,681
Brown	41,465	45,940	41,978	41,868	41,891	44,163	47,251	47,259	50,160	51,300
Butler	38,186	40,441	39,980	40,356	40,530	41,713	43,401	45,940	46,806	47,302
Chase	36,556	38,219	35,037	36,973	38,561	40,032	42,385	41,761	51,017	52,416
Chautauqua	28,537	33,088	30,478	25,289	21,747	23,378	25,676	24,032	26,638	28,553
Cherokee	41,236	41,838	40,624	41,656	43,329	46,776	52,510	52,670	62,543	63,951
Cheyenne	48,131	63,439	44,875	38,317	37,160	34,048	41,042	40,149	51,625	62,466
Clark	40,340	47,760	43,514	40,755	47,005	43,572	41,246	40,882	41,553	39,245
Clay	34,652	38,603	34,921	33,398	33,045	34,010	35,741	37,500	42,564	43,416
Cloud	32,380	34,401	33,014	32,030	32,802	33,594	37,284	39,623	44,840	45,921
Coffey	59,404	67,248	64,814	59,630	59,793	56,570	64,457	62,093	69,110	66,214
Comanche	30,313	40,313	31,222	27,480	26,988	23,486	30,970	26,741	31,866	37,030
Cowley	39,494	40,636	42,087	45,173	41,834	42,718	44,301	45,204	47,928	49,197
Crawford	38,965	40,593	39,066	39,106	38,950	39,903	42,202	43,562	47,344	48,320
Decatur	37,248	46,918	43,725	42,441	44,193	33,717	35,670	36,564	48,638	52,483
Dickinson	34,882	36,183	34,610	35,446	36,521	36,947	39,314	41,555	44,626	46,169
Doniphan	36,210	41,618	35,657	36,659	37,240	38,773	39,865	44,157	48,354	48,974
Douglas	37,425	38,237	38,970	40,707	41,506	41,996	42,994	44,592	47,387	49,160
Edwards	55,975	74,562	57,862	60,112	63,263	50,783	52,535	51,371	63,742	68,214
Elk	29,400	33,101	31,052	25,713	21,219	22,225	24,470	22,828	25,599	29,011
Ellis	40,214	41,433	42,312	39,405	36,563	35,917	39,437	40,856	42,880	44,838
Ellsworth	38,081	40,090	41,027	36,601	35,062	36,800	39,925	41,302	45,143	47,005
Finney	47,635	51,682	49,804	50,179	50,438	49,945	52,210	51,796	55,143	57,045
Ford	43,707	45,637	43,529	44,546	47,867	48,073	50,429	52,056	58,426	60,129
Franklin	37,441	39,420	39,413	40,008	40,550	41,992	43,211	44,091	46,622	48,723
Geary	67,359	66,524	66,128	67,185	67,833	69,194	70,406	68,799	71,733	74,197
Gove	60,650	57,299	49,684	59,915	58,500	43,395	45,764	45,129	53,232	59,108
Graham	39,278	46,316	37,983	35,202	28,679	30,313	36,604	37,104	40,479	47,113
Grant	61,570	73,454	70,495	61,626	68,841	58,571	61,072	55,087	55,328	53,196
Gray	58,446	77,092	68,075	60,904	71,266	59,267	53,257	52,509	56,230	54,779
Greeley	57,170	68,104	46,631	33,771	46,742	58,258	58,981	52,635	72,963	83,662
Greenwood	28,053	32,356	30,713	27,092	26,802	27,879	28,463	28,821	31,638	34,004

**Average Wage per Job in Kansas, by County
Full- and Part-Time by Place of Work, 2012-2021**

County	2012	2013	2014	2015	2016	2017	2018	2019	2020	2021
Hamilton	\$59,672	\$94,168	\$89,084	\$63,794	\$57,966	\$53,910	\$57,371	\$56,569	\$75,101	\$68,135
Harper	46,586	47,548	46,626	39,652	37,592	36,152	41,475	47,337	52,387	54,390
Harvey	40,243	42,264	41,123	40,939	40,945	42,705	44,582	46,355	49,140	50,303
Haskell	75,103	109,301	87,363	65,943	73,028	73,186	66,524	51,971	58,937	65,597
Hodgeman	35,852	56,884	48,040	50,953	47,059	41,541	42,913	40,290	46,142	45,160
Jackson	29,286	31,100	29,892	30,674	30,210	31,666	33,699	34,705	38,638	39,964
Jefferson	30,167	32,561	32,217	34,280	35,646	36,139	37,257	38,073	39,897	42,511
Jewell	39,815	57,436	40,674	37,804	33,586	28,818	35,444	37,072	47,775	51,561
Johnson	53,314	56,449	58,693	61,597	62,717	65,108	67,497	71,986	75,379	77,653
Kearny	59,482	73,299	58,453	51,889	54,251	52,447	51,851	53,127	66,129	69,458
Kingman	34,856	38,398	35,886	33,518	32,199	28,457	31,881	31,822	46,365	43,446
Kiowa	28,599	33,623	24,903	30,439	31,317	31,793	33,350	31,880	42,782	44,868
Labette	35,876	38,910	37,998	38,427	38,655	39,834	42,260	42,982	46,245	47,624
Lane	65,929	74,056	61,078	54,027	64,956	51,122	54,353	48,487	51,549	56,424
Leavenworth	58,683	59,190	59,520	59,940	59,439	60,311	61,771	63,011	65,906	67,916
Lincoln	30,721	33,939	30,185	28,108	28,253	27,530	33,872	34,085	45,678	43,831
Linn	31,775	34,975	33,488	35,389	36,613	39,200	38,886	39,802	46,650	43,685
Logan	41,333	51,989	38,497	35,720	35,426	32,286	35,671	38,396	48,514	51,700
Lyon	34,304	35,817	36,379	37,611	37,679	38,670	41,121	40,679	44,394	44,924
McPherson	48,284	50,365	50,459	50,396	46,965	47,987	52,791	58,471	60,228	61,245
Marion	31,153	33,813	32,026	33,053	33,251	34,001	36,061	35,308	40,163	40,078
Marshall	40,343	42,925	39,101	38,634	36,514	38,655	41,066	41,561	46,801	48,302
Meade	59,835	81,485	61,411	52,203	53,966	50,384	53,175	56,098	65,731	71,932
Miami	33,328	34,498	34,604	35,856	37,251	38,794	40,283	41,378	45,107	46,866
Mitchell	47,739	50,258	47,922	45,210	45,204	47,587	56,451	60,801	66,638	66,046
Montgomery	40,889	42,846	42,640	42,110	39,942	42,263	44,458	43,662	46,083	47,862
Morris	34,303	36,183	33,523	33,793	34,529	33,887	39,622	37,703	43,367	42,143
Morton	47,138	54,754	47,109	32,556	35,619	44,535	48,051	44,559	50,036	61,775
Nemaha	41,166	42,954	40,859	36,745	37,241	41,032	42,479	41,679	49,093	50,252
Neosho	36,340	37,343	37,259	36,362	36,685	37,132	39,610	41,017	43,581	44,883
Ness	35,792	39,254	35,018	31,769	25,640	28,551	33,748	35,334	39,031	43,996
Norton	42,215	52,304	46,412	39,987	44,948	41,835	41,272	43,691	53,089	54,210
Osage	24,683	26,563	25,286	26,247	27,127	28,034	30,907	31,286	35,121	37,099
Osborne	35,308	43,929	34,202	33,304	29,063	27,488	36,670	37,372	41,486	44,919
Ottawa	30,467	31,975	28,408	28,622	27,957	27,798	30,842	29,299	35,690	40,173
Pawnee	45,395	56,476	50,662	49,947	54,589	45,380	47,139	48,270	52,607	53,913
Phillips	43,219	50,840	46,268	48,635	39,802	37,649	39,069	42,005	43,919	45,480

**Average Wage per Job in Kansas, by County
Full- and Part-Time by Place of Work, 2012-2021**

County	2012	2013	2014	2015	2016	2017	2018	2019	2020	2021
Pottawatomie	\$39,253	\$39,161	\$39,370	\$41,261	\$41,745	\$42,089	\$44,091	\$43,590	\$46,840	\$47,673
Pratt	45,135	50,422	46,784	44,330	44,019	42,452	45,138	45,749	48,911	53,954
Rawlins	45,693	70,064	44,255	42,174	40,690	36,411	39,585	46,903	62,464	71,858
Reno	38,488	39,570	38,834	39,465	39,915	42,119	43,627	45,535	48,358	49,620
Republic	38,541	45,512	38,140	37,267	37,427	33,755	33,596	35,371	37,853	37,325
Rice	45,718	50,071	50,400	50,877	43,580	42,875	43,813	46,556	44,215	42,370
Riley	40,574	40,777	41,900	43,104	44,120	41,786	42,371	42,850	46,473	47,639
Rooks	33,039	37,358	32,209	30,531	26,350	25,882	31,680	31,465	35,713	39,712
Rush	35,642	38,601	33,964	32,453	28,969	27,948	34,512	40,190	46,107	48,737
Russell	41,476	42,317	39,304	32,687	26,213	26,168	29,908	31,540	32,317	35,606
Saline	45,599	46,145	46,273	47,813	48,772	51,080	52,428	53,063	54,432	56,105
Scott	63,682	85,866	75,303	71,222	70,589	63,323	54,781	50,533	55,244	56,296
Sedgwick	55,930	57,284	57,675	56,932	55,934	58,292	57,808	60,535	61,674	62,743
Seward	44,219	49,019	51,150	52,961	51,197	50,623	51,875	51,701	56,953	57,948
Shawnee	48,900	49,482	50,569	51,577	52,864	53,944	56,573	57,610	61,117	62,932
Sheridan	52,709	72,579	46,780	42,515	44,195	39,508	36,157	35,856	42,373	42,145
Sherman	44,185	57,430	39,332	37,006	37,363	37,889	39,908	38,729	45,393	49,376
Smith	35,542	42,996	31,621	32,892	29,652	30,532	34,164	36,173	46,538	46,879
Stafford	58,207	67,186	59,759	41,637	39,526	37,115	38,397	37,292	38,752	39,254
Stanton	68,298	96,630	63,454	57,327	52,398	54,966	56,611	74,152	90,074	97,400
Stevens	53,120	70,649	57,403	47,956	46,288	51,776	49,528	52,075	60,038	60,031
Sumner	39,548	38,261	36,215	35,702	34,710	35,884	37,538	40,721	43,727	46,706
Thomas	46,404	53,493	40,579	37,717	39,988	40,918	43,283	44,072	46,686	45,989
Trego	35,590	42,514	35,733	34,814	32,000	31,801	36,819	37,062	42,735	47,985
Wabaunsee	26,939	29,015	27,963	27,862	26,889	28,623	31,208	30,066	31,436	33,470
Wallace	54,860	78,798	44,566	32,022	35,212	31,521	40,276	39,472	47,019	46,637
Washington	35,876	42,857	37,336	29,999	30,158	30,128	33,103	34,552	41,226	40,725
Wichita	76,524	117,242	98,006	79,354	101,640	74,429	59,681	57,723	57,653	55,637
Wilson	44,050	45,688	44,615	46,296	43,705	44,483	42,847	43,323	46,046	47,647
Woodson	31,020	30,131	24,126	22,802	21,027	22,616	27,194	26,240	29,610	33,594
Wyandotte	93,660	88,358	77,859	74,765	61,052	62,762	64,709	67,021	68,211	69,022
Kansas	\$50,549	\$52,629	\$51,959	\$52,250	\$51,664	\$53,007	\$54,789	\$57,024	\$59,976	\$61,639

Source: U.S. Bureau of Economic Analysis, Regional Economic Information System, Table CAINC30, <https://www.bea.gov/itable/> (accessed August 2, 2023).

The employment measure is the number of jobs, full-time plus part-time.

Data revised annually.

**Average Wage per Job in Kansas, by Metropolitan and Micropolitan Area
Full- and Part-Time by Place of Work, 2013-2021**

Area	2013	2014	2015	2016	2017	2018	2019	2020	2021
Metropolitan Area									
Kansas City, MO-KS	\$57,717	\$58,178	\$59,566	\$58,924	\$60,537	\$62,182	\$64,870	\$67,836	\$69,919
Lawrence, KS	38,237	38,970	40,707	41,506	41,996	42,994	44,592	47,387	49,160
Manhattan, KS	50,560	50,892	52,096	52,644	51,761	52,691	52,323	55,865	57,327
St. Joseph, MO-KS	46,085	46,346	45,863	46,353	48,478	49,255	51,539	54,174	55,778
Topeka, KS	46,458	47,217	48,280	49,417	50,517	53,042	54,010	57,374	59,226
Wichita, KS	54,662	54,845	54,233	53,389	55,620	55,496	58,214	59,432	60,531
Micropolitan Area									
Atchison, KS	39,805	39,709	40,723	40,637	44,632	45,926	48,136	49,053	51,228
Coffeyville, KS	42,846	42,640	42,110	39,942	42,263	44,458	43,662	46,083	47,862
Dodge City, KS	45,637	43,529	44,546	47,867	48,073	50,429	52,056	58,426	60,129
Emporia, KS	35,996	36,279	37,565	37,741	38,767	41,216	40,761	44,872	45,441
Garden City, KS	53,623	50,580	50,333	50,769	50,163	52,178	51,910	56,100	58,152
Great Bend, KS	46,323	48,394	41,758	39,377	39,776	41,520	43,977	43,355	44,069
Hays, KS	41,433	42,312	39,405	36,563	35,917	39,437	40,856	42,880	44,838
Hutchinson, KS	39,570	38,834	39,465	39,915	42,119	43,627	45,535	48,358	49,620
Liberal, KS	49,019	51,150	52,961	51,197	50,623	51,875	51,701	56,953	57,948
McPherson, KS	50,365	50,459	50,396	46,965	47,987	52,791	58,471	60,228	61,245
Ottawa, KS	39,420	39,413	40,008	40,550	41,992	43,211	44,091	46,622	48,723
Parsons, KS	38,910	37,998	38,427	38,655	39,834	42,260	42,982	46,245	47,624
Pittsburg, KS	40,593	39,066	39,106	38,950	39,903	42,202	43,562	47,344	48,320
Salina, KS	45,217	45,077	46,540	47,378	49,576	51,068	51,541	53,219	55,089
Winfield, KS	40,636	42,087	45,173	41,834	42,718	44,301	45,204	47,928	49,197
Combined Statistical Area									
Kansas City-Overland Park-									
Kansas City, MO-KS	55,728	56,206	57,498	57,039	58,625	60,208	62,777	65,723	67,774
Wichita-Winfield, KS	53,966	54,209	53,791	52,828	54,999	54,969	57,630	58,901	60,012
Metropolitan	55,708	55,859	56,780	56,007	57,786	59,227	62,008	64,600	66,272
Nonmetropolitan	46,073	43,562	42,320	41,964	42,131	44,497	45,309	49,218	50,783
Kansas	\$52,629	\$51,959	\$52,250	\$51,664	\$53,007	\$54,789	\$57,024	\$59,976	\$61,639

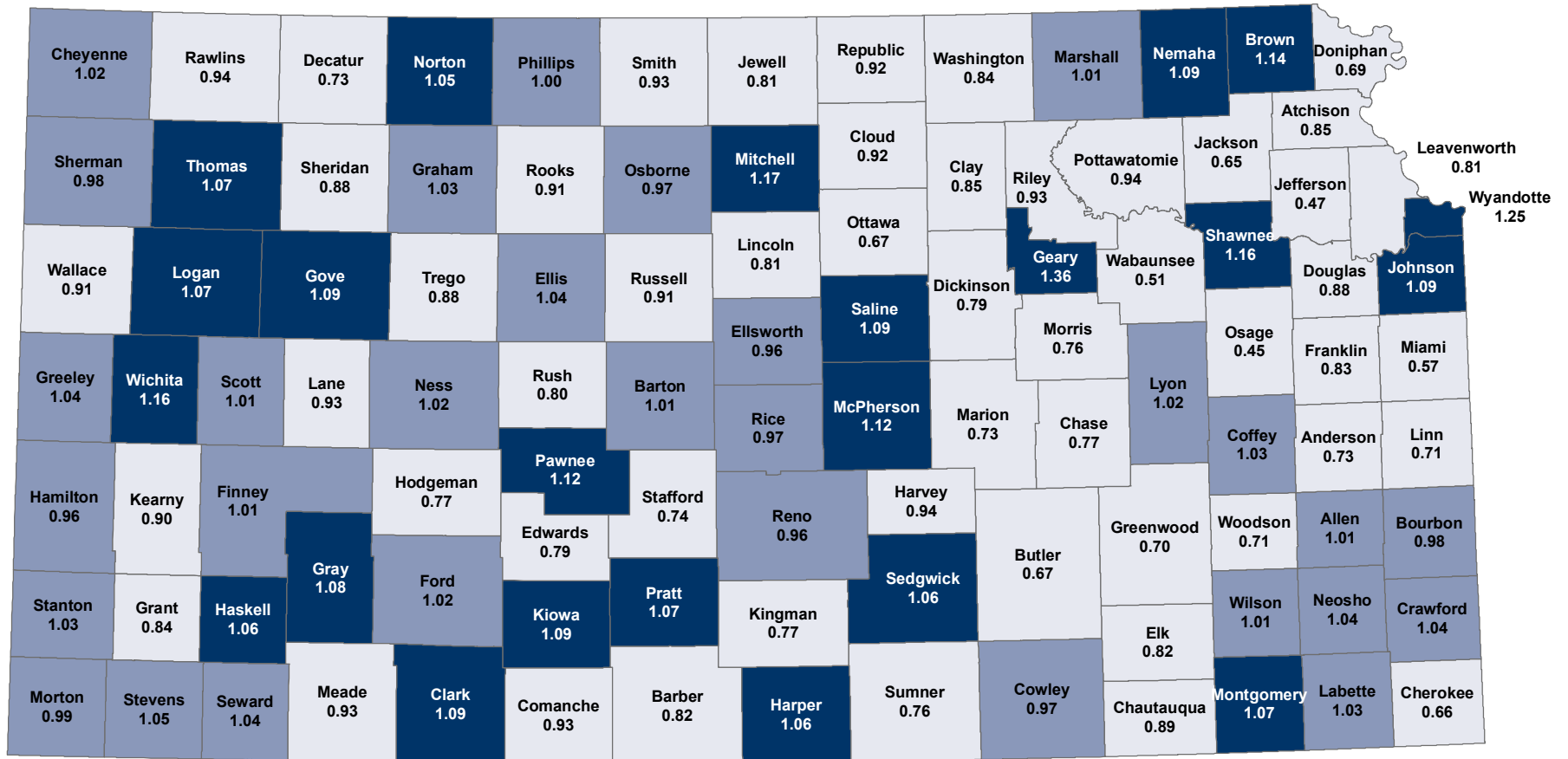
Source: U.S. Bureau of Economic Analysis, Regional Economic Information System, Table CAINC30, <https://www.bea.gov/itable/> (accessed August 2, 2023).

The employment measure is the number of jobs, full-time plus part-time.

Statistical areas are post-2010 Census areas as defined in Office of Management and Budget bulletin 20-01 issued March 6, 2020

Data revised annually.

County Employment Residence Ratio Five-Year Average 2017-21



Source: Institute for Policy & Social Research, The University of Kansas; data from U.S. Census Bureau, 2017-2021 American Community Survey.

Employment residence ratio is defined as the total number of workers in an area divided by the total number of workers living in the same area. A ratio higher than 1.0 indicates a county is attracting workers from other counties.

Employment Residence Ratio

State: 1.01

