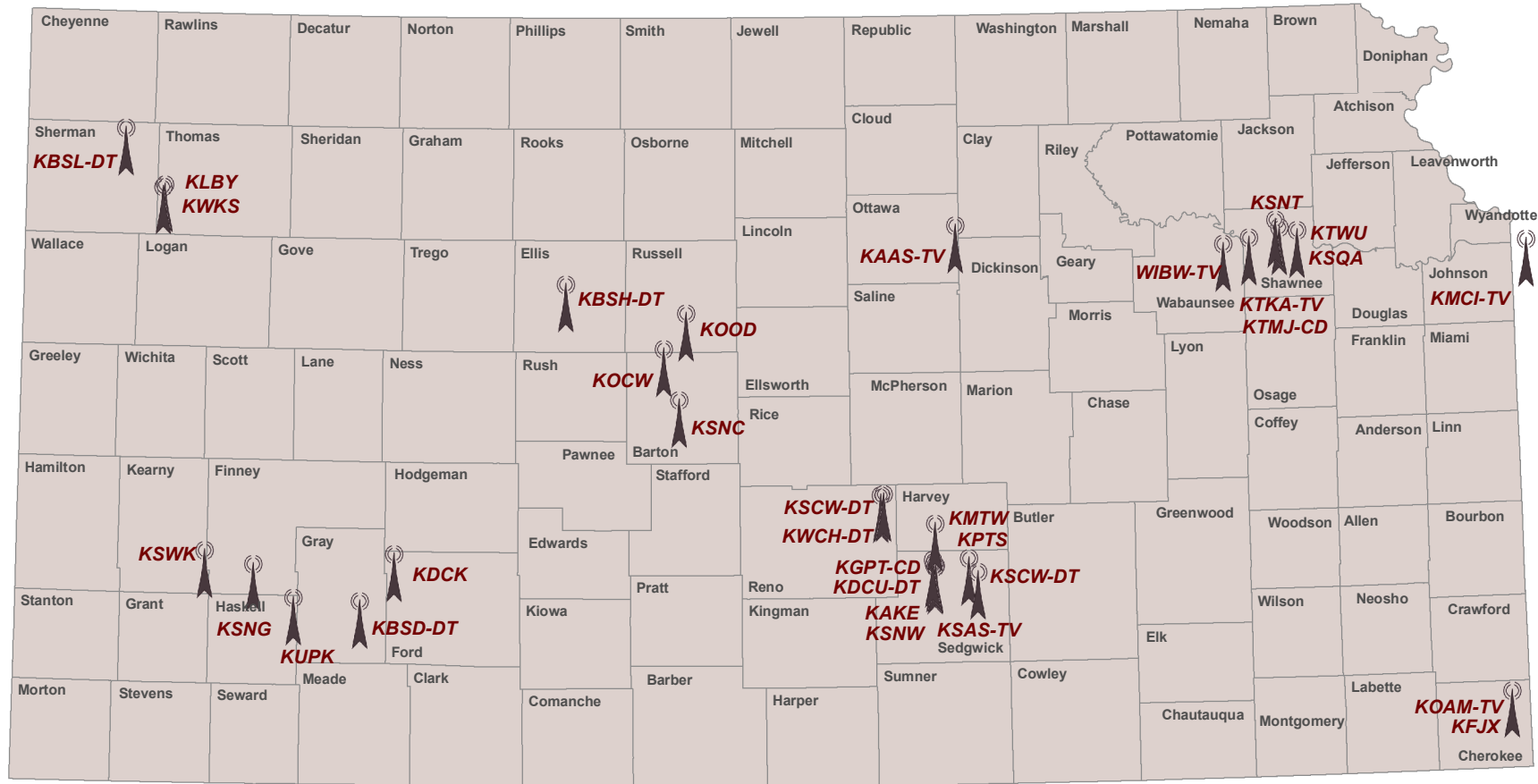




# COMMUNICATIONS AND INFORMATION


**Kansas Statistical Abstract 2022**  
Institute for Policy & Social Research  
[ipsr.ku.edu/ksdata/ksah/](https://ipsr.ku.edu/ksdata/ksah/)

## Digital TV Licensees in Kansas with Tower Locations



Source: Institute for Policy & Social Research, The University of Kansas; data from Federal Communications Commission (FCC).

Tower symbol represents the approximate location of one or more towers.

 DigitalTV  
(as of August 8, 2023)

**Radio and Television Stations in Kansas, 1971-2021**

Year	Radio Stations			Television Stations
	AM	FM	Total	
1971	63	31	94	15
1972	63	36	99	15
1973	63	36	99	15
1974	61	42	103	14
1975	62	46	108	14
1976	61	49	110	14
1977	61	57	118	14
1978	62	58	120	14
1979	61	64	125	14
1980	63	70	133	14
1981	64	72	136	16
1982	61	73	134	16
1983	63	78	141	19
1984	62	79	141	24
1985	63	90	153	24
1986	67	79	146	22
1987	62	87	149	21
1988	62	89	151	21
1989	61	94	155	20
1990	61	97	158	22
1991	61	101	162	22
1992	61	104	165	23
1993	62	107	169	22
1994	60	115	175	22
1995	61	118	179	22
1996	61	124	185	22
1997	61	128	189	22
1998	62	131	193	22
1999	63	141	204	24
2000	59	136	195	24
2001	70	157	227	36
2002	69	159	228	36
2003	72	166	238	36
2004	72	167	239	38
2005	72	179	251	39
2006	72	183	255	40
2007	72	183	255	40
2008	72	183	255	40
2009	72	185	257	40
2010	73	181	254	39
2011	73	181	254	39
2012	73	181	254	39
2013	73	183	256	39
2014	71	197	268	39
2015	71	197	268	39
2016	71	193	264	39
2017	65	185	250	39
2018	75	175	250	43
2019	75	175	250	43
2020	76	176	252	43
2021	76	176	252	43

Source: Associated Press Broadcast Services, *Broadcasting Yearbook*, various issues; R.R. Bowker, *Broadcasting and Cable Yearbook*, 1996-2000; Kansas Association of Broadcasters, 2001-2021.

Data for some years may include out-of-state stations that broadcast in Kansas.

**Newspapers in Kansas  
2015, 2017, and 2019**

City	Newspaper	Established	Issued*	Circulation		
				2015	2017	2019
Abilene	<i>Abilene Reflector-Chronicle</i>	1873	Mon. - Fri.	3,935	3,935	3,925
Alma	<i>The Wabaunsee County Signal Enterprise</i>	1884	Thur.	1,112	1,112	1,300
Andale	<i>The Clarion (The Mount Hope Clarion)</i>	1885	Thur.	1,650	1,500	1,500
Andover	<i>Andover American</i>	2011	Wed.	-	-	--
Anthony	<i>Anthony Republican &amp; 4 County News</i>	1878	Wed.	1,900	1,900	1,900
Arkansas City	<i>Arkansas City Traveler</i>	1870	Tues. - Sat.	4,832	4,832	4,832
Ashland	<i>The Clark County Clipper</i>	1884	Thur.	1,260	603	--
Atchison	<i>Atchison Globe</i>	1877	Wed., Sat.	3,293	3,293	3,293
Attica	<i>Attica Independent</i>	1895	Thur.	659	659	-
Augusta	<i>The Butler County Times-Gazette</i>	1882	Tues., Thurs., Sat.	2,247	2,247	2,247
Basehor	<i>Kansas City Record</i>	1888	Thur.	6,000	6,000	-
Belle Plaine	<i>The Belle Plaine News</i>	1879	Thur.	1,048	1,048	548
Belleville	<i>The Belleview Telescope</i>	1870	Wed.	3,500	3,500	3,500
Beloit	<i>Beloit Call</i>	1901	Mon., Wed., Fri.	1,620	1,620	-
Bird City	<i>Bird City Times</i>	1926	Thur.	568	568	568
Blue Rapids	<i>Blue Rapids Free Press</i>	2009	Thur.	1,900	1,900	-
Bucklin	<i>Bucklin Banner</i>	1901	Wed.	287	247	200
Burlington	<i>The Coffey County Republican</i>	1856	Tues., Fri.	3,000	3,000	3,000
Caldwell	<i>Caldwell Messenger</i>	1887	Wed.	1,350	1,350	1,350
Caney	<i>Montgomery County Chronicle</i>	1885	Thur.	1,963	2,020	-
Cawker City	<i>Cawker City Ledger</i>	1899	Thur.	-	764	--
Cedar Vale	<i>Cedar Vale Lookout</i>	-	Thur.	256	300	--
Chanute	<i>The Chanute Tribune</i>	1892	Tues. - Sat.	4,359	4,359	4,359
Chapman	<i>Chapman &amp; Enterprise News-Times</i>	-	Thur.	750	750	-
Cheney	<i>Times Sentinel</i>	1894	Thur.	3,000	3,000	3,000
Cherryvale	<i>Cherryvale Chronicle</i>	1885	Thur.	3,100	3,100	3,100
Cimarron	<i>Jacksonian</i>	1885	Wed.	1,200	1,200	905
Clay Center	<i>The Clay Center Dispatch</i>	1873	Mon. - Fri.	2,300	1,500	1,500
Clyde	<i>Clyde Republican</i>	1900	Thur.	1,000	1,000	1,000
Coffeyville	<i>Coffeyville Journal Addition</i>	1875	Mon., Wed., Fri.	10,000	14,103	14,103
Colby	<i>Colby Free Press</i>	1888	Mon.; Wed. - Fri.	1,954	1,954	1,954
Coldwater	<i>The Western Star</i>	1884	Thur.	939	830	780
Columbus	<i>Columbus News Report</i>	2010	Mon., Wed., Fri.	1,191	1,191	1,191
	<i>The Cherokee County News Advocate</i>	1882	Tues., Fri.	3,300	3,300	3,300
Concordia	<i>Concordia Blade-Empire</i>	1902	Mon. - Fri.	2,357	2,357	2,357
Conway Springs	<i>Conway Springs Star and The Argonia Argosy</i>	1884	Thur.	-	740	--
Cottonwood Falls	<i>Chase County Leader-News</i>	1871	Thur.	1,215	1,215	1,215
Council Grove	<i>Council Grove Republican</i>	1872	Mon. - Fri.	2,150	1,400	1,400
Courtland	<i>Courtland Journal</i>	1903	Thur.	720	720	720
Cunningham	<i>Cunningham Courier</i>	1886	Thur.	604	542	-
Derby	<i>Derby Informer</i>	1998	Wed.	1,750	2,789	2,789
Dighton	<i>The Dighton Herald</i>	1885	Wed.	1,000	1,000	1,000
Dodge City	<i>Dodge City Daily Globe</i>	1878	Tues. - Sat.	9,700	9,700	9,700
	<i>High Plains Journal</i>	1949	Mon.	46,814	44,232	44,232
Downs	<i>The Downs News and Times</i>	1879	Thur.	1,155	1,155	1,155
Effingham	<i>Newsleaf</i>	-	Tues.	210	210	-
Elkhart	<i>Elkhart Tri-State News</i>	1886	Thur.	-	933	--
Ellinwood	<i>Ellinwood Leader</i>	1894	Fri.	1,666	1,666	1,666
Ellis	<i>The Ellis Review</i>	1880	Thur.	1,162	1,162	1,162
Ellsworth	<i>The Ellsworth County Independent-Reporter</i>	1871	Thur.	2,745	2,745	2,745
Emporia	<i>The Emporia Gazette</i>	1890	Mon. - Sat.	5,746	5,746	5,746
Erie	<i>The Erie Record</i>	1876	Thur.	987	987	-
Eureka	<i>The Eureka Herald</i>	1868	Wed.	2,340	2,340	2,340

**Newspapers in Kansas  
2015, 2017, and 2019**

City	Newspaper	Established	Issued*	Circulation		
				2015	2017	2019
Fairview	<i>Fairview Enterprise</i>	1888	Wed.	325	325	325
Fort Scott	<i>The Fort Scott Tribune</i>	1884	Tues. - Sat.	3,289	3,289	3,289
Frankfort	<i>Frankfort Area News</i>	1991	Thur.	700	700	700
Fredonia	<i>Wilson County Citizen</i>	1870	Mon., Thur.	4,069	3,069	3,069
Galena	<i>Galena Sentinel-Times</i>	1880	Wed.	1,159	1,159	-
Garden City	<i>The Garden City Telegram</i>	1906	Mon. - Fri.	7,432	7,432	7,432
			Sat.	7,966	7,966	7,966
Gardner	<i>Spring Hill New Era</i>	-	Wed.	2,010	2,010	2,010
Garnett	<i>Anderson County Advocate</i>	-	Fri.	1,022	965	-
	<i>The Anderson County Review</i>	1865	Tues.	2,117	2,117	2,362
Glasco	<i>The Delphos Republican</i>	1883	Thur.	400	400	--
Goodland	<i>Goodland Star-News</i>	1993	Tues., Fri.	2,004	2,004	2,004
Great Bend	<i>Great Bend Tribune</i>	1876	Tues. - Fri., Sun.	5,977	5,977	5,977
Greensburg	<i>Kiowa County Signal</i>	1886	Wed.	900	900	900
Halstead	<i>Harvey County Independent</i>	1881	Thur.	1,700	1,709	-
Hanover	<i>Hanover News</i>	1948	Fri.	-	805	--
Harper	<i>Harper Advocate</i>	1881	Wed.	-	-	1,200
Haven	<i>Rural Messenger</i>	2008	Tues.	18,000	18,000	18,000
Hays	<i>The Hays Daily News</i>	1929	Tues. - Fri.	9,500	9,000	6,000
			Sun.	9,500	9,500	6,500
Haysville	<i>Haysville Sun-Times</i>	-	Thur.	1,100	1,100	1,100
Herington	<i>The Herington Times</i>	1889	Thur.	2,058	1,100	850
Hesston	<i>Hesston Record</i>	-	Thur.	1,204	1,204	1,204
	<i>The Ledger</i>	-	Thur.	-	-	1,300
Hiawatha	<i>Hiawatha World</i>	1908	Tues., Fri.	2,300	2,300	2,300
Hill City	<i>The Hill City Times</i>	1886	Wed.	2,260	2,260	1,810
Hillsboro	<i>Hillsboro Free Press</i>	1998	Wed.	7,238	7,260	7,260
	<i>Hillsboro Star-Journal</i>	1908	Wed.	1,300	1,300	1,300
Holton	<i>The Holton Recorder</i>	1867	Mon., Wed.	6,900	6,900	6,900
Horton	<i>The Horton Headlight</i>	1886	Thur.	1,300	1,300	1,300
Hoxie	<i>The Sheridan Sentinel</i>	1884	Thur.	1,801	1,801	850
Hugoton	<i>The Hugoton Hermes</i>	1887	Thur.	2,300	2,300	2,300
Hutchinson	<i>The Hutchinson News</i>	1872	Mon. - Sat.	21,050	18,507	17,605
			Sun.	23,502	21,015	21,393
Independence	<i>Independence Daily Reporter</i>	1881	Tues. - Fri.; Sun.	6,654	6,654	6,654
Iola	<i>Iola Register</i>	1875	Mon. - Thur.; Sat.	3,750	3,750	3,750
Jetmore	<i>Jetmore Republican</i>	1878	Wed.	470	403	-
Johnson	<i>Johnson Pioneer</i>	1914	Thur.	-	703	--
Junction City	<i>The Daily Union</i>	1861	Tues. - Fri.	2,604	3,092	3,092
			Sat.	2,770	3,092	3,092
Kansas City	<i>Wyandotte County Business News</i>	-	Mon.	-	-	-
	<i>Wyandotte Daily News Weekly Print Edition</i>	1968	Thur.	11,500	11,500	11,500
	<i>Wyandotte Echo</i>	-	Thur.	1,027	1,027	-
Kingman	<i>Kingman Leader-Courier</i>	1878	Thur.	2,450	2,450	2,450
Kinsley	<i>Edwards County Sentinel</i>	-	Wed.	1,200	1,200	1,200
Kiowa	<i>The Kiowa News</i>	1893	Wed.	1,284	1,284	1,284
La Crosse	<i>Rush County News</i>	1941	Thur.	1,317	1,197	-
Lakin	<i>The Lakin Independent</i>	1885	Thur.	1,450	1,450	1,450
Larned	<i>The Tiller &amp; Toiler</i>	1892	Tues., Fri.	1,434	1,434	1,434
Lawrence	<i>Lawrence Journal-World</i>	1891	Mon. - Sat.	19,356	21,305	8,751
			Sun.	21,055	24,730	9,728
Leavenworth	<i>The Leavenworth Times</i>	1857	Tues. - Fri.	4,020	4,020	4,020
			Sat.	4,100	4,100	4,100

**Newspapers in Kansas  
2015, 2017, and 2019**

City	Newspaper	Established	Issued*	Circulation				
				2015	2017	2019		
Leoti	<i>The Leoti Standard</i>	1885	Wed.	1,030	1,030	1,030		
Liberal	<i>The Leader &amp; Times</i>	1987	Mon. - Fri.	4,250	4,250	4,250		
			Sun.	4,500	4,500	4,500		
			Thur.	8,500	8,500	8,500		
Lincoln	<i>Lincoln Sentinel-Republican</i>	1886	Thur.	3,500	3,500	3,500		
Lindsborg	<i>The Lindsborg News-Record</i>	1881	Thur.	2,899	2,899	2,899		
Linn	<i>Linn-Palmer Record</i>	1891	Thur.	1,133	713	713		
Little River	<i>Monitor-Journal</i>	1886	Wed.	400	400	400		
Logan	<i>The Logan Republican</i>	1886	Thur.	1,000	1,000	1,000		
Louisburg	<i>Louisburg Herald</i>	1876	Wed.	2,350	-	--		
Lucas	<i>Lucas-Sylvan News</i>	1896	Thur.	950	950	675		
Lyons	<i>The Lyons News</i>	1906	Tues., Fri.	2,321	2,321	2,321		
McPherson	<i>McPherson Sentinel</i>	1887	Tues. - Sat.	3,600	3,600	3,600		
Madison	<i>The Madison News</i>	1909	Wed.	865	865	865		
			Grass & Grain	1953	Tues.	14,000	14,000	14,000
			<i>Manhattan Free Press</i>	1991	Thur.	2,000	2,000	-
Manhattan	<i>The Manhattan Mercury</i>	1884	Mon. - Fri.	8,021	8,340	8,340		
			Sun.	9,048	9,136	9,136		
			Thur.	1,005	1,005	700		
Mankato	<i>Jewell County Record</i>	1890	Thur.	1,005	1,005	700		
Marion	<i>Marion County Record</i>	1869	Wed.	2,800	2,800	2,800		
Marquette	<i>Marquette Tribune</i>	1887	Wed.	600	600	600		
Marysville	<i>Marysville Advocate</i>	1885	Thur.	4,350	4,150	3,700		
Meade	<i>Meade County News</i>	1885	Wed.	1,300	1,300	1,300		
Medicine Lodge	<i>Gyp Hill Premiere</i>	1991	Mon.	1,200	1,200	1,200		
Miltonvale	<i>Miltonvale Record</i>	1898	Thur.	621	621	411		
Minneapolis	<i>Minneapolis Messenger</i>	1875	Thur.	2,333	2,333	2,333		
Minneola	<i>Clark County Gazette</i>	-	Wed.	760	760	-		
Montezuma	<i>Montezuma Press</i>	1914	Thur.	1,018	1,018	--		
Moundridge	<i>The Ledger</i>	1887	Thur.	1,203	1,026	-		
Mulberry	<i>The Mulberry Advance</i>	-	Fri.	-	56	--		
Mullinville	<i>Merchant's Directory</i>	1969	Wed.	320	320	400		
Mulvane	<i>The Mulvane News</i>	1903	Thur.	1,712	1,712	--		
Natoma	<i>Natoma Luray Independent</i>	1909	Wed., Fri.	6,054	6,054	6,054		
Neodesha	<i>Neodesha Derrick</i>	1883	Thur.	1,899	1,899	1,899		
Ness City	<i>Ness County News</i>	1884	Thur.	2,248	2,248	2,248		
Newton	<i>The Newton Kansan</i>	1872	Mon. - Sun.	7,513	7,513	7,513		
Norton	<i>The Norton Telegram</i>	1906	Tues., Fri.	2,704	2,704	2,704		
Norwich	<i>The Norwich News</i>	1987	Tues.	246	254	-		
Oakley	<i>The Oakley Graphic</i>	1888	Wed.	1,200	1,200	1,200		
Oberlin	<i>The Oberlin Herald</i>	1879	Wed.	1,815	1,815	1,815		
			Olathe	<i>Legal Record</i>	-	Tues.	-	-
Olathe	<i>The Olathe News</i>	1861	Wed., Sat.	-	-	25,000		
			Thur.	970	970	-		
Onaga	<i>Onaga Herald</i>	1879	Thur.	970	970	-		
Osage City	<i>The Osage County Herald-Chronicle</i>	1869	Thur.	4,000	4,000	4,000		
Osawatomie	<i>Osawatomie Graphic</i>	1888	Wed.	3,500	-	--		
Osborne	<i>Osborne County Farmer</i>	1872	Thur.	2,600	2,600	2,600		
Oskaloosa	<i>Oskaloosa Independent</i>	1860	Thur.	1,752	1,752	1,559		
Oswego	<i>Labette Avenue</i>	1879	Wed.	1,889	1,889	1,889		
Ottawa	<i>The Ottawa Herald</i>	1869	Tues., Thurs., Sat.	-	4,800	4,800		
Oxford	<i>The Oxford Register</i>	1889	Thur.	524	524	524		
Paola	<i>The Miami County Republic</i>	1866	Wed.	5,150	5,150	5,150		
Parsons	<i>Farm Talk</i>	1974	Wed.	-	-	-		
			<i>Parsons Sun</i>	1871	Mon. - Sun.	5,420	5,420	5,420

**Newspapers in Kansas  
2015, 2017, and 2019**

City	Newspaper	Established	Issued*	Circulation		
				2015	2017	2019
Peabody	<i>The Gazette-Bulletin</i>	1873	Wed.	1,409	1,409	1,409
Phillipsburg	<i>Advocate of Phillips County</i>	-	Thur.	1,838	1,838	-
	<i>Phillips County Review</i>	1869	Wed.	2,000	2,000	2,000
Pittsburg	<i>The Morning Sun</i>	1887	Tues. - Fri.	5,500	5,500	5,500
			Sat.	5,900	5,900	5,900
			Sun.	6,000	6,000	6,000
Plainville	<i>Plainville Times</i>	1904	Thur.	2,440	2,440	1,240
Pleasanton	<i>The Linn County News</i>	-	Wed.	2,600	2,600	2,600
Pratt	<i>The Pratt Tribune</i>	1917	Tues., Thur., Sat.	2,000	2,000	2,000
Pretty Prairie	<i>Ninnescah Valley News</i>	-	Fri.	750	750	-
Protection	<i>Protection Press</i>	1986	Thur.	784	784	784
Quinter	<i>Gove County Advocate</i>	1894	Wed.	1,900	1,900	1,900
Riley	<i>Riley Countian</i>	-	Wed.	1,200	1,200	1,200
Russell	<i>The Russell County News</i>	1930, 1960	Wed., Fri.	2,300	2,300	2,300
Sabetha	<i>The Sabetha Herald</i>	1884	Wed.	2,592	2,592	2,592
St. Francis	<i>The Saint Francis Herald</i>	1912	Thur.	1,292	1,292	1,292
St. John	<i>St. John News</i>	1878	Wed.	714	714	714
St. Marys	<i>St. Marys Star</i>	1884	Tues.	1,850	1,850	1,850
Salina	<i>The Salina Journal</i>	1871	Mon. - Fri.	20,978	18,808	18,365
			Sat.	20,978	21,266	18,365
			Sun.	21,986	19,863	19,317
Sedan	<i>Prairie Star</i>	1870	Wed.	1,350	1,350	1,350
Seneca	<i>The Courier-Tribune</i>	1863	Wed.	4,900	4,900	4,900
Sharon Springs	<i>The Western Times</i>	1874	Thur.	-	5,209	--
Shawnee	<i>Shawnee Dispatch</i>	2003	Wed.	22,743	22,953	20,108
Smith Center	<i>Smith County Pioneer</i>	1872	Thur.	-	1,535	--
South Haven	<i>The South Haven New Era</i>	-	Tues.	365	365	365
Spearville	<i>Spearville News</i>	1899	Thur.	700	700	595
Stafford	<i>The Stafford Courier</i>	1903	Wed.	1,000	1,000	1,000
Sterling	<i>Sterling Bulletin</i>	1876	Thur.	1,147	1,147	1,047
Stockton	<i>Stockton Sentinel</i>	1989	Thur.	1,851	1,851	1,851
Sublette	<i>The Haskell County Monitor-Chief</i>	1891	Wed.	800	800	800
Syracuse	<i>The Syracuse Journal</i>	1885	Wed.	767	767	667
Tonganoxie	<i>The Mirror</i>	1882	Wed.	2,555	2,555	2,555
Topeka	<i>The Topeka Capital-Journal</i>	1879	Mon. - Fri.	21,689	25,747	20,273
			Sat.	22,462	28,345	20,273
			Sun.	27,882	31,176	25,480
			Mon.	-	-	-
Tribune	<i>The Topeka Metro News</i>	-	Mon.	-	-	-
Tribune	<i>Greeley County Republican</i>	1886	Wed.	914	914	914
Turon	<i>The Record</i>	1921	Thur.	576	576	576
Ulysses	<i>The Ulysses News</i>	1892	Thur.	2,616	2,216	2,216
Valley Center	<i>Ark Valley News</i>	-	Thur.	3,093	3,093	3,093
Valley Falls	<i>Valley Falls Vindicator</i>	1890	Thur.	1,997	1,997	1,900
WaKeeney	<i>Western Kansas World</i>	1879	Thur.	2,100	2,100	2,100
Wamego	<i>The Wamego Times</i>	1889	Thur.	1,300	1,300	950
	<i>Wamego Smoke Signal</i>	1974	Wed.	9,823	9,823	9,823
Washington	<i>The Washington County News</i>	1869	Thur.	2,816	2,501	2,310
Waterville	<i>Telegraph</i>	1870	Sat.	755	755	755
Wathena	<i>The Kansas Chief</i>	1857	Thur.	2,225	2,225	2,075
Wellington	<i>Wellington Daily News</i>	1901	Wed.	2,000	2,000	2,000
Westmoreland	<i>Westmoreland Recorder</i>	1885	Thur.	844	--	--
White City	<i>The Prairie Post</i>	1993	Thur.	900	815	765

**Newspapers in Kansas  
2015, 2017, and 2019**

City	Newspaper	Established	Issued*	Circulation		
				2015	2017	2019
Wichita	<i>Wichita Business Journal</i>	1986	Fri.	6,209	6,209	-
	<i>The Wichita Eagle</i>	1872	Mon. - Fri.	46,899	55,920	38,968
			Sat.	49,437	57,802	37,947
			Sun.	71,768	78,427	55,259
Winfield	<i>Cowley Courier Traveler</i>	-	Tues. - Sat.	-	-	-
	<i>Winfield Daily Courier</i>	1871	Tues. - Sat.	4,522	4,522	4,522
Yates Center	<i>Yates Center News</i>	1878	Thur.	2,190	2,190	1,540

Source: Editor & Publisher, *E & P Newspaper Data Book*, U.S. Daily Newspapers and Community Newspapers in the U.S., various editions; Kansas Press Association, <http://kspress.com/> (accessed July 22, 2020); *History of Kansas Newspapers*, Kansas State Historical Society, 1916.

\* Refers to the day(s) of the week published in the most recent published year.

Single dash (-) indicates not reported.

Double dash (-) indicates not published/not applicable.



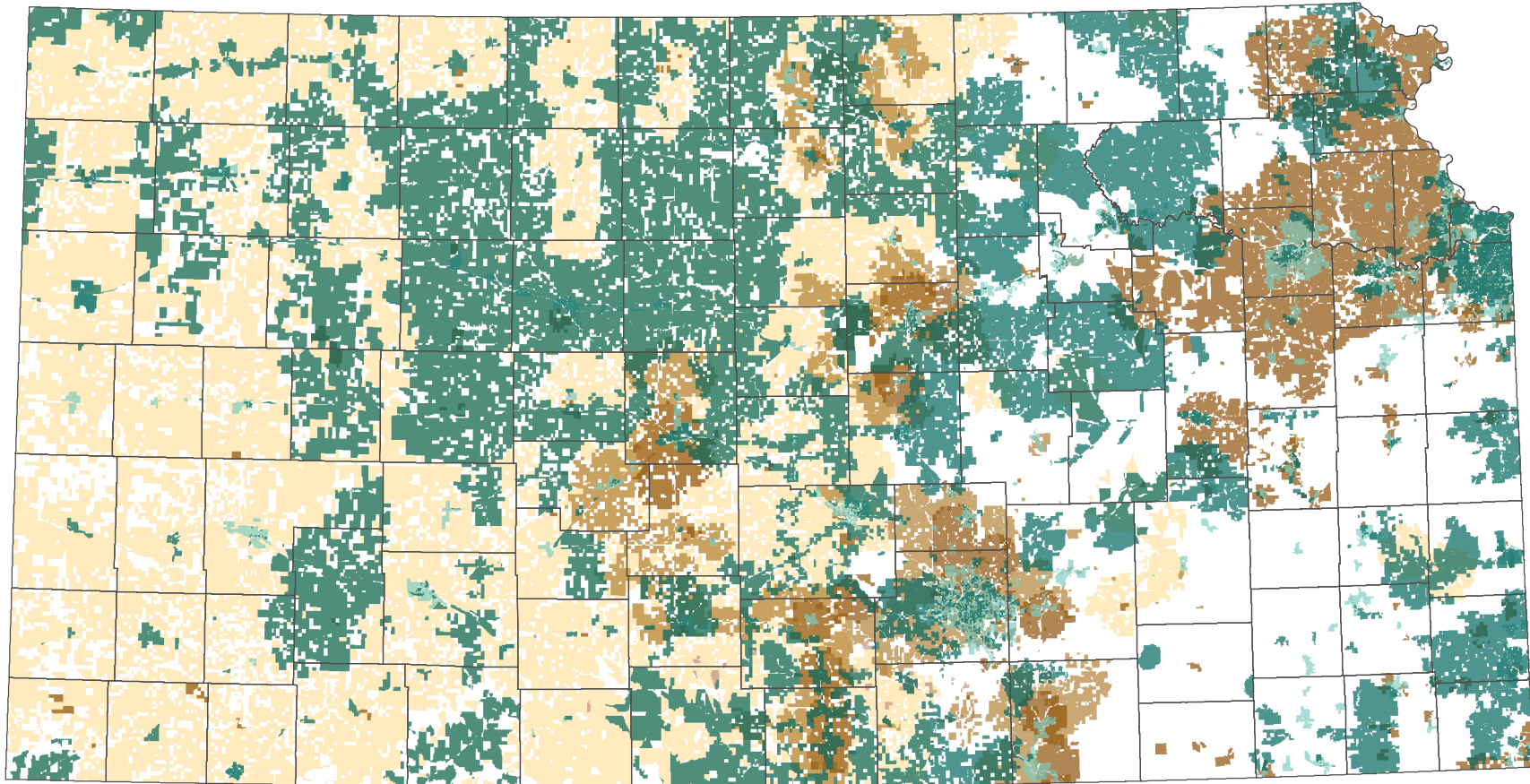
**Persons Using the Internet by Type of Connection and State, 2021**

State	Population in Households (thousands)	Percent with a Computer* with:				
		Dial-Up Internet Only	Fixed Broadband	Mobile Broadband	No Internet Subscription	No Computer (percent)
Alabama	4,925	0.4	77.6	71.4	7.4	4.5
Alaska	707	0.1	79.2	74.6	4.5	2.4
Arizona	7,131	0.1	86.2	80.3	4.3	2.5
Arkansas	2,950	0.1	77.6	72.0	6.8	4.5
California	38,422	0.1	86.6	82.6	3.4	2.0
Colorado	5,699	0.1	88.8	84.4	3.5	1.8
Connecticut	3,496	0.1	88.0	81.8	3.0	2.6
Delaware	979	0.2	86.6	81.4	3.8	2.7
District of Columbia	633	0.0	84.3	80.5	6.4	2.5
Florida	21,369	0.1	84.3	79.1	5.4	2.4
Georgia	10,546	0.1	84.8	79.6	5.1	3.1
Hawaii	1,399	0.3	87.6	84.1	3.2	2.5
Idaho	1,872	0.2	85.6	80.4	4.3	2.7
Illinois	12,382	0.1	84.7	79.9	4.4	3.1
Indiana	6,624	0.1	83.0	77.8	4.5	3.8
Iowa	3,101	0.2	83.8	79.5	5.0	3.5
<b>Kansas</b>	<b>2,860</b>	<b>0.1</b>	<b>84.2</b>	<b>79.2</b>	<b>4.7</b>	<b>2.7</b>
Kentucky	4,384	0.2	82.2	76.6	5.4	4.7
Louisiana	4,502	0.1	79.5	75.1	6.7	4.7
Maine	1,337	0.2	87.6	80.1	4.1	3.2
Maryland	6,027	0.1	87.6	82.1	3.9	2.1
Massachusetts	6,738	0.1	88.7	83.7	2.9	2.7
Michigan	9,839	0.1	84.1	78.3	4.2	3.3
Minnesota	5,583	0.2	86.8	82.1	3.5	2.6
Mississippi	2,866	0.1	72.9	67.2	9.9	5.4
Missouri	6,010	0.1	82.7	78.1	5.3	3.6
Montana	1,077	0.3	82.7	75.5	4.7	3.7
Nebraska	1,916	0.2	85.1	79.5	4.4	2.9
Nevada	3,109	0.1	85.3	80.0	5.2	2.3
New Hampshire	1,350	0.1	90.0	83.4	3.0	2.2
New Jersey	9,084	0.1	87.3	83.3	3.6	2.6
New Mexico	2,075	0.3	78.9	71.4	9.4	4.3
New York	19,266	0.1	85.1	79.7	4.1	3.7
North Carolina	10,290	0.1	85.4	80.0	5.1	3.5
North Dakota	751	0.1	86.0	81.0	5.5	3.2
Ohio	11,479	0.2	86.0	80.6	4.4	4.3
Oklahoma	3,885	0.1	79.1	73.1	6.0	3.7
Oregon	4,161	0.1	86.4	81.4	4.2	2.2
Pennsylvania	12,554	0.2	85.8	79.7	4.1	4.5
Rhode Island	1,054	0.1	85.5	79.7	3.9	2.7
South Carolina	5,069	0.2	82.6	77.0	6.2	3.7
South Dakota	864	0.4	84.9	76.8	5.4	4.3
Tennessee	6,825	0.1	82.3	77.4	5.7	3.7
Texas	28,966	0.1	82.4	77.0	5.5	2.6
Utah	3,291	0.1	88.8	84.7	3.6	1.2
Vermont	620	0.3	86.4	72.4	4.6	3.8
Virginia	8,407	0.1	84.9	80.6	4.2	2.9
Washington	7,595	0.1	88.6	84.4	2.9	1.8
West Virginia	1,739	0.2	83.8	74.5	6.3	6.1
Wisconsin	5,757	0.2	85.4	80.0	4.2	3.7
Wyoming	566	0.1	85.5	78.2	4.8	2.6
<b>United States</b>	<b>324,133</b>	<b>0.1</b>	<b>84.8</b>	<b>79.7</b>	<b>4.6</b>	<b>3.0</b>

Source: U.S. Census Bureau, 2021 American Community Survey (B28008).

\* Includes those who said "yes" to at least one of the following types of computers: desktop, laptop, netbook or notebook computer, handheld computer including smart mobile phones or other handheld wireless computer, or some other type of computer which may include tablets or other devices. Respondents were instructed to exclude GPS devices, digital music players, and devices with only limited computing devices such as household appliances. Respondents were able to select more than one type of computer and more than one type of internet subscription.

## Broadband Availability in Kansas, 2022



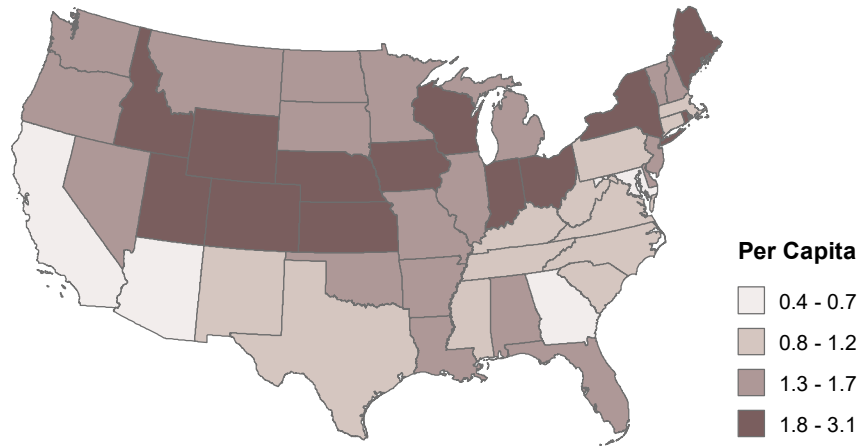
Source: Institute for Policy & Social Research, The University of Kansas;  
data from Federal Communications Commission.

Providers reporting 100/20 Mbps or faster service as of June 30, 2022.

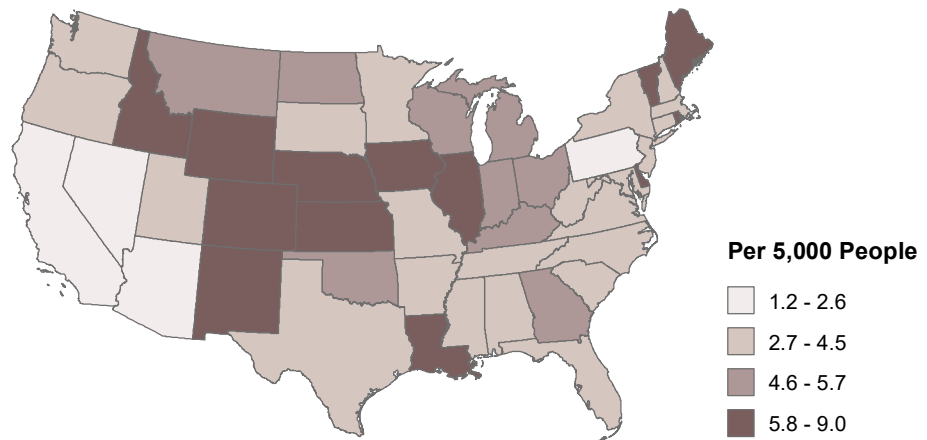
### Technology Type

- Optical Carrier/Fiber
- Coaxial Cable
- Licensed Terrestrial Fixed Wireless
- Unlicensed Terrestrial Fixed Wireless
- Copper Wire
- Non-geostationary Satellite

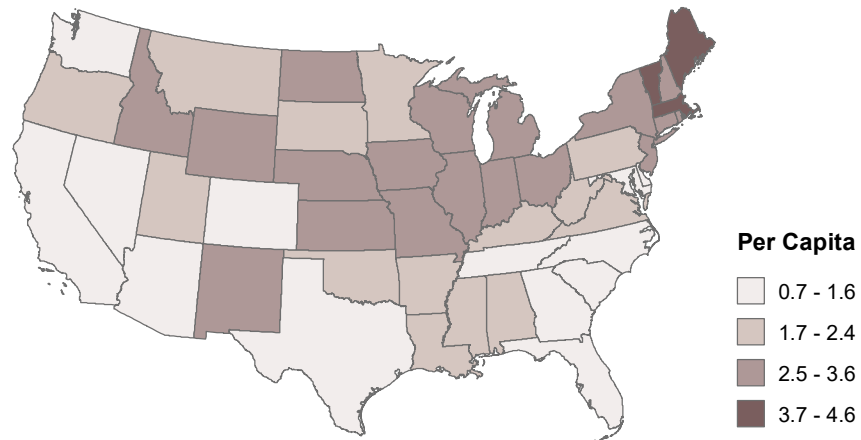
### Library Visits per Capita by State, FY2021



### Public-Use Internet Computers in Public Libraries per 5,000 People by State, FY2021



### Printed Library Materials per Capita by State, FY2021



Source: Institute for Policy & Social Research, The University of Kansas; data from Institute of Museum and Library Services.

**Public Library Materials by State, Fiscal Year 2021**

State	Number of Public Libraries	Printed Materials		Electronic Books		Audio		Video	
		Number (thousands)	Per Capita	Number (thousands)	Per 1,000 Population	Number (thousands)	Per 1,000 Population	Number (thousands)	Per 1,000 Population
Alabama	224	8,447	1.7	8,790	1,792.7	3,718	758.2	1,048	213.8
Alaska	67	1,990	3.1	1,784	2,780.3	1,138	1,773.1	366	571.2
Arizona	83	7,484	0.7	13,024	1,131.4	9,867	857.2	1,797	156.1
Arkansas	59	5,702	1.9	7,823	2,665.0	3,995	1,361.1	892	303.7
California	199	53,313	1.4	48,541	1,230.4	28,914	732.9	9,535	241.7
Colorado	96	9,205	1.6	8,736	1,523.0	5,689	991.8	2,515	438.4
Connecticut	183	12,388	2.8	2,822	648.9	1,890	434.7	1,192	274.2
Delaware	19	1,438	1.4	673	676.4	385	387.0	189	190.1
District of Columbia	1	1,028	1.5	85	127.4	57	84.6	191	285.3
Florida	57	23,355	1.0	18,192	817.6	40,897	1,838.1	4,368	196.3
Georgia	60	13,975	1.3	2,614	241.6	2,313	213.8	1,246	115.2
Hawaii	1	2,795	2.0	137	97.2	138	98.3	176	124.8
Idaho	100	4,129	2.6	2,713	1,684.4	1,246	773.4	446	276.7
Illinois	623	36,890	3.1	51,243	4,364.5	28,234	2,404.8	6,434	548.0
Indiana	235	21,069	3.4	21,929	3,531.1	7,491	1,206.2	2,840	457.3
Iowa	543	11,311	3.6	26,910	8,683.0	14,904	4,808.9	1,260	406.6
<b>Kansas</b>	<b>323</b>	<b>8,325</b>	<b>3.3</b>	<b>207,862</b>	<b>82,870.7</b>	<b>53,035</b>	<b>21,144.0</b>	<b>4,629</b>	<b>1,845.5</b>
Kentucky	120	8,982	2.0	19,138	4,278.5	5,871	1,312.6	1,283	286.9
Louisiana	67	10,709	2.3	6,873	1,492.4	3,501	760.2	2,112	458.5
Maine	255	6,062	4.6	6,862	5,251.0	4,172	3,192.5	944	722.3
Maryland	14	9,778	1.6	3,459	570.7	2,568	423.7	1,571	259.3
Massachusetts	369	28,053	4.1	27,976	4,059.1	12,548	1,820.5	2,772	402.2
Michigan	393	25,608	2.5	30,035	2,988.5	15,798	1,572.0	4,713	469.0
Minnesota	128	13,188	2.2	5,776	952.8	2,124	350.4	1,091	179.9
Mississippi	53	5,121	1.7	259	87.2	399	134.4	451	151.7
Missouri	139	14,778	2.7	7,908	1,447.4	3,629	664.2	1,875	343.2
Montana	78	2,402	2.4	3,399	3,439.9	3,170	3,208.6	423	428.3
Nebraska	245	5,535	3.5	6,087	3,823.4	4,038	2,536.0	470	295.3
Nevada	19	3,131	1.0	1,263	402.4	951	302.8	620	197.5
New Hampshire	223	5,326	3.6	9,816	6,562.4	8,432	5,637.4	1,561	1,043.6
New Jersey	296	24,145	2.6	42,209	4,488.2	25,953	2,759.6	7,460	793.3
New Mexico	98	3,874	2.6	1,752	1,166.4	1,613	1,074.1	523	348.1
New York	756	63,012	3.2	52,638	2,688.1	29,304	1,496.5	6,518	332.9
North Carolina	73	14,870	1.4	15,529	1,480.8	4,085	389.5	1,304	124.3
North Dakota	79	2,099	3.0	1,765	2,496.3	998	1,411.2	256	362.6
Ohio	239	37,251	3.2	155,008	13,304.9	79,035	6,783.8	11,570	993.1

**Public Library Materials by State, Fiscal Year 2021**

State	Number of Public Libraries	Printed Materials		Electronic Books		Audio		Video	
		Number (thousands)	Per Capita	Number (thousands)	Per 1,000 Population	Number (thousands)	Per 1,000 Population	Number (thousands)	Per 1,000 Population
Oklahoma	118	5,785	1.8	8,153	2,504.5	3,634	1,116.5	845	259.6
Oregon	128	8,620	2.3	12,147	3,207.2	6,018	1,588.9	1,818	479.9
Pennsylvania	441	23,923	1.9	19,221	1,510.9	9,076	713.4	2,870	225.6
Rhode Island	47	3,039	2.8	6,448	5,875.7	2,472	2,253.0	377	343.8
South Carolina	42	7,998	1.6	5,941	1,152.7	4,161	807.4	1,239	240.5
South Dakota	106	2,647	2.1	2,823	2,205.0	1,353	1,057.2	181	141.1
Tennessee	184	10,122	1.5	29,972	4,464.2	15,857	2,361.7	1,445	215.2
Texas	544	33,464	1.3	19,863	743.7	8,299	310.7	4,496	168.3
Utah	62	6,354	2.1	7,568	2,445.5	13,580	4,388.0	1,242	401.4
Vermont	183	2,841	4.5	1,886	3,018.0	1,756	2,808.9	255	408.2
Virginia	83	14,655	1.7	26,366	3,098.6	14,831	1,743.0	3,795	446.0
Washington	51	11,155	1.5	5,725	747.8	4,487	586.0	1,791	234.0
West Virginia	96	4,532	2.4	10,085	5,442.8	20,762	11,204.4	1,276	688.5
Wisconsin	380	17,326	2.9	66,699	11,302.1	27,709	4,695.3	2,647	448.5
Wyoming	23	2,076	3.6	2,153	3,733.1	889	1,541.7	403	698.2
<b>United States</b>	<b>9,005</b>	<b>661,305</b>	<b>2.0</b>	<b>1,046,680</b>	<b>3,189.1</b>	<b>546,983</b>	<b>1,666.6</b>	<b>111,323</b>	<b>339.2</b>

Source: Institute of Museum and Library Services, Public Libraries Survey FY2021, <https://www.ims.gov/research-evaluation/data-collection/public-libraries-survey> (accessed July 19, 2023).

Data may not sum to totals due to rounding.

Audio and Video include physical and downloadable titles.

**Public Library Service by State, Fiscal Year 2021**

State	Number of Public Libraries	Library Visits		Children's Circulation		Total Circulation	
		Total (thousands)	Per Capita	Total (thousands)	Percent of Total	Total (thousands)	Per Capita
Alabama	224	6,419	1.3	5,670	33.3	17,015	3.5
Alaska	67	910	1.4	963	34.6	2,783	4.3
Arizona	83	4,451	0.4	6,976	25.0	27,919	2.4
Arkansas	59	4,199	1.4	2,938	24.6	11,923	4.1
California	199	22,154	0.6	39,255	29.9	131,412	3.3
Colorado	96	13,294	2.3	17,405	33.8	51,449	9.0
Connecticut	183	5,080	1.2	5,413	32.8	16,523	3.8
Delaware	19	594	0.6	675	24.3	2,779	2.8
District of Columbia	1	902	1.3	1,506	29.9	5,043	7.5
Florida	57	29,079	1.3	22,774	29.7	76,678	3.4
Georgia	60	7,873	0.7	9,743	39.5	24,666	2.3
Hawaii	1	713	0.5	1,898	52.1	3,645	2.6
Idaho	100	3,779	2.3	4,842	37.1	13,042	8.1
Illinois	623	17,991	1.5	26,648	34.2	77,941	6.6
Indiana	235	15,277	2.5	16,521	36.2	45,603	7.3
Iowa	543	5,636	1.8	5,760	33.9	17,001	5.5
<b>Kansas</b>	<b>323</b>	<b>6,623</b>	<b>2.6</b>	<b>8,020</b>	<b>39.9</b>	<b>20,080</b>	<b>8.0</b>
Kentucky	120	4,976	1.1	4,930	26.8	18,362	4.1
Louisiana	67	7,661	1.7	3,665	20.8	17,591	3.8
Maine	255	2,406	1.8	2,039	38.7	5,273	4.0
Maryland	14	2,414	0.4	12,035	35.4	33,970	5.6
Massachusetts	369	5,990	0.9	12,137	32.0	37,918	5.5
Michigan	393	13,738	1.4	14,587	28.4	51,358	5.1
Minnesota	128	9,762	1.6	16,729	38.6	43,282	7.1
Mississippi	53	2,828	1.0	1,398	31.9	4,377	1.5
Missouri	139	8,654	1.6	10,900	27.3	40,000	7.3
Montana	78	1,662	1.7	1,330	31.8	4,184	4.2
Nebraska	245	3,699	2.3	5,314	46.3	11,478	7.2
Nevada	19	3,952	1.3	2,853	23.1	12,339	3.9
New Hampshire	223	2,441	1.6	2,221	31.3	7,100	4.7
New Jersey	296	15,675	1.7	15,345	38.2	40,120	4.3
New Mexico	98	1,525	1.0	1,346	21.0	6,410	4.3
New York	756	34,534	1.8	20,628	27.7	74,583	3.8
North Carolina	73	8,973	0.9	13,668	38.7	35,343	3.4
North Dakota	79	1,194	1.7	1,107	37.7	2,938	4.2
Ohio	239	30,548	2.6	41,110	31.0	132,787	11.4
Oklahoma	118	4,668	1.4	5,960	33.0	18,042	5.5
Oregon	128	4,858	1.3	9,928	29.8	33,309	8.8
Pennsylvania	441	15,035	1.2	16,632	35.0	47,550	3.7
Rhode Island	47	1,963	1.8	1,660	31.1	5,333	4.9
South Carolina	42	4,997	1.0	5,297	29.9	17,722	3.4
South Dakota	106	2,031	1.6	2,040	40.7	5,016	3.9
Tennessee	184	5,696	0.8	6,861	32.1	21,350	3.2
Texas	544	23,310	0.9	38,103	42.6	89,353	3.3
Utah	62	8,110	2.6	13,809	44.7	30,891	10.0
Vermont	183	987	1.6	1,047	33.9	3,093	4.9
Virginia	83	10,041	1.2	14,533	32.2	45,104	5.3
Washington	51	10,771	1.4	16,954	26.3	64,371	8.4
West Virginia	96	1,713	0.9	846	20.0	4,228	2.3
Wisconsin	380	13,852	2.3	14,883	36.2	41,095	7.0
Wyoming	23	1,776	3.1	1,504	38.8	3,880	6.7
<b>United States</b>	<b>9,005</b>	<b>417,414</b>	<b>1.3</b>	<b>510,406</b>	<b>32.8</b>	<b>1,555,251</b>	<b>4.7</b>

Source: Institute of Museum and Library Services, Public Libraries Survey FY2021, <https://www.ims.gov/research-evaluation/data-collection/public-libraries-survey> (accessed July 19, 2023).

Data may not sum to totals due to rounding.

**Number of Public Libraries Providing Public-Use Internet Terminals  
and Use of Electronic Resources by State, Fiscal Year 2021**

State	Number of Public Libraries	Number of Public-Use Internet Terminals		Circulation of Electronic Materials		Wireless Internet Sessions	
		Total	Per Capita	Total (thousands)	Per Capita	Total (thousands)	Per Capita
Alabama	224	4,439	4.5	12,596	2.6	5,358	1.1
Alaska	67	673	5.2	2,387	3.7	459	0.7
Arizona	83	4,524	2.0	19,272	1.7	3,780	0.3
Arkansas	59	2,591	4.4	5,444	1.9	1,739	0.6
California	199	20,618	2.6	115,314	2.9	14,855	0.4
Colorado	96	6,813	5.9	21,958	3.8	4,637	0.8
Connecticut	183	3,100	3.6	7,145	1.6	1,279	0.3
Delaware	19	1,041	5.2	875	0.9	70	0.1
District of Columbia	1	1,000	7.5	3,831	5.7	223	0.3
Florida	57	16,891	3.8	41,372	1.9	8,540	0.4
Georgia	60	10,260	4.7	8,229	0.8	3,539	0.3
Hawaii	1	344	1.2	42,228	30.0	174	0.1
Idaho	100	2,892	9.0	3,649	2.3	1,384	0.9
Illinois	623	14,772	6.3	36,126	3.1	12,740	1.1
Indiana	235	7,116	5.7	21,028	3.4	14,967	2.4
Iowa	543	4,183	6.7	6,418	2.1	2,182	0.7
<b>Kansas</b>	<b>323</b>	<b>3,450</b>	<b>6.9</b>	<b>11,859</b>	<b>4.7</b>	<b>2,619</b>	<b>1.0</b>
Kentucky	120	4,341	4.9	12,741	2.8	3,934	0.9
Louisiana	67	5,444	5.9	30,147	6.5	4,137	0.9
Maine	255	1,565	6.0	1,432	1.1	694	0.5
Maryland	14	4,432	3.7	21,987	3.6	7,787	1.3
Massachusetts	369	5,680	4.1	21,110	3.1	3,093	0.4
Michigan	393	10,773	5.4	20,616	2.1	6,544	0.7
Minnesota	128	4,107	3.4	15,358	2.5	5,849	1.0
Mississippi	53	2,627	4.4	1,830	0.6	2,351	0.8
Missouri	139	4,605	4.2	22,557	4.1	2,915	0.5
Montana	78	932	4.7	1,407	1.4	597	0.6
Nebraska	245	2,383	7.5	3,853	2.4	2,301	1.4
Nevada	19	1,605	2.6	7,691	2.4	866	0.3
New Hampshire	223	1,296	4.3	2,896	1.9	630	0.4
New Jersey	296	7,190	3.8	13,168	1.4	4,483	0.5
New Mexico	98	1,882	6.3	4,827	3.2	3,484	2.3
New York	756	15,613	4.0	34,263	1.7	9,441	0.5
North Carolina	73	7,345	3.5	25,125	2.4	2,155	0.2
North Dakota	79	655	4.6	968	1.4	1,668	2.4
Ohio	239	11,541	5.0	57,955	5.0	9,634	0.8
Oklahoma	118	3,126	4.8	11,711	3.6	2,754	0.8
Oregon	128	2,779	3.7	13,826	3.7	4,491	1.2
Pennsylvania	441	6,611	2.6	24,064	1.9	3,950	0.3
Rhode Island	47	1,342	6.1	7,186	6.5	386	0.4
South Carolina	42	3,670	3.6	17,529	3.4	2,103	0.4
South Dakota	106	967	3.8	1,438	1.1	581	0.5
Tennessee	184	5,482	4.1	12,464	1.9	3,698	0.6
Texas	544	16,455	3.1	91,781	3.4	34,172	1.3
Utah	62	2,026	3.3	9,029	2.9	2,003	0.6
Vermont	183	817	6.5	914	1.5	429	0.7
Virginia	83	7,310	4.3	28,263	3.3	7,861	0.9
Washington	51	5,956	3.9	37,456	4.9	5,543	0.7
West Virginia	96	1,138	3.1	2,242	1.2	112	0.1
Wisconsin	380	5,562	4.7	11,209	1.9	12,269	2.1
Wyoming	23	721	6.2	3,775	6.5	215	0.4
<b>United States</b>	<b>9,005</b>	<b>262,685</b>	<b>4.0</b>	<b>932,550</b>	<b>2.8</b>	<b>231,677</b>	<b>0.7</b>

Source: Institute of Museum and Library Services, Public Libraries Survey FY2021, <https://www.imls.gov/research-evaluation/data-collection/public-libraries-survey> (accessed July 19, 2023).

Data may not sum to totals due to rounding.