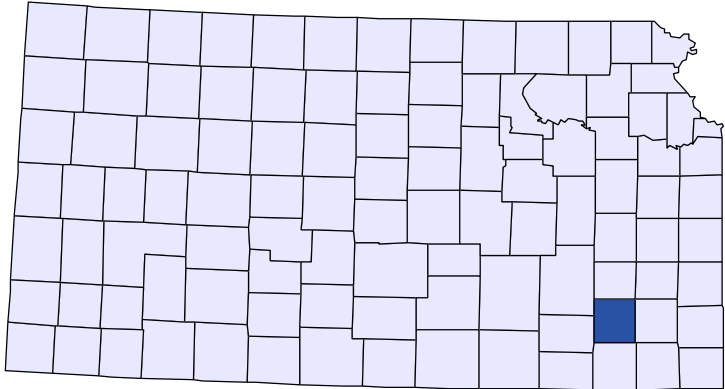




# Kansas County Profiles

## Wilson County



The University  
of Kansas

Institute for Policy  
& Social Research

**KU** INSTITUTE FOR POLICY  
& SOCIAL RESEARCH  

---

The University of Kansas

1541 Lilac Lane, Rm. 607  
Blake Hall  
Lawrence, KS 66045-3129

## Foreword

The Kansas County Profile Report is published by the Institute for Policy & Social Research (IPSR) at the University of Kansas with support from the KU University Center project.\* Special thanks to Xanthippe Wedel, senior research data engineer, who compiles and updates the county profiles and Genna Hurd, associate researcher, who provides editorial review.

County reports can be generated for any county in Kansas by simply clicking on the county from the web site:

<https://ipsr.ku.edu/ksdata/kcced/profiles/>

The Kansas County Profile Report contains 12 categories of information: Population, Vital Statistics and Health, Housing, Education, Social Environment, Business, Employment, Income, Banking, Government, Crime, and Agriculture. For more information about Kansas, please refer to the Kansas Statistical Abstract, available online at:

<https://ipsr.ku.edu/ksdata/ksah/>

We are always looking for ways to improve the Kansas County Profile Report and we welcome your suggestions and comments. Please address any correspondence to the Institute for Policy & Social Research, The University of Kansas, 607 Blake Hall, 1541 Lilac Lane, Lawrence, Kansas 66045-3129, e-mail [ipsr@ku.edu](mailto:ipsr@ku.edu) or call 785-864-3701.

*\*The KU University Center is a collaborative effort led by the Institute for Policy & Social Research at the University of Kansas. This project is supported by the Economic Development Administration, U.S. Department of Commerce, through its University Center Program.*

*The mission of EDA is to lead the federal economic development agenda by promoting innovation and competitiveness, preparing American regions for growth and success in the worldwide economy.*

## Kansas County Profiles Table of Contents

### Population

Total Population (Decennial Census)	1
Estimated Population (Current Population Reports)	2
Urban Population	2
Rural Population	3
Net Migration (Decade Ending...)	3
Median Age	3

### Population (Age Groups)

Population Under 18 (Decennial Census)	3
Population Age 18 and Over (Decennial Census)	4
Population Age 65 and Over (Decennial Census)	4
Population Age 85 and Over (Decennial Census)	4

### Vital Statistics and Health

Live Births	5
Deaths	5
Marriages	6
Divorces and Annulments	6
Physicians: M.D. Physicians	7
Physicians: D.O. Physicians	7
Dentists	8
Number of Hospitals	8
Number of Hospital Beds	9

### Housing

Housing Units (Decennial Census)	9
Housing Units (Estimated)	10
Occupied Housing Units	10
Owner Occupied Housing Units	10
Renter Occupied Housing Units	11
Vacant Housing Units	11
Median Value (\$): Owner Occupied Housing Units	11
Median Contract Rent (\$)	12
Fair Market Rent: 2 Bedrooms	12

### Education

Population Age 25 and Over	13
Percent of Population 25+ with High School or Higher Education	13
Percent of Population 25+ with Bachelors Degree or Higher Education	14
Public School Enrollment (FTE- School Year Beginning...)	14
Pupil/Teacher Ratio (School Year Beginning...)	15

## Kansas County Profiles Table of Contents

### Social Environment

Total Child Care Facilities	15
Preschools	16
Food Stamp Beneficiaries	16
Percent of Population Receiving Food Stamps	17
Estimated Number of People in Poverty	17
Estimated Percent of People in Poverty	18
Estimated Number of Related Children Age 5 to 17 in Families in Poverty	18
Estimated Percent of Related Children Age 5 to 17 in Families in Poverty	19
Estimated Number Under 18 in Poverty	19
Estimated Percent Under 18 in Poverty	20

### Business

Establishments: Total	21
Establishments: 1-19 Employees	22
Establishments: 20-99 Employees	22
Establishments: 100-499 Employees	23
Establishments: 500 or More Employees	23
Establishments: Forestry, Fishing, Hunting, and Ag Support	24
Establishments: Mining	24
Establishments: Utilities	25
Establishments: Construction	25
Establishments: Manufacturing	26
Establishments: Wholesale Trade	26
Establishments: Retail Trade	27
Establishments: Transportation and Warehousing	27
Establishments: Information	28
Establishments: Finance and Insurance	28
Establishments: Real Estate, Rental, and Leasing	29
Establishments: Professional, Scientific, and Technical Services	29
Establishments: Management of Companies and Enterprises	30
Establishments: Admin, Support, Waste Management, and Remediation	30
Establishments: Educational Services	31
Establishments: Health Care and Social Assistance	31
Establishments: Arts, Entertainment, and Recreation	32
Establishments: Accommodation and Food Services	32
Establishments: Other Services	33

## Kansas County Profiles Table of Contents

<b>Business</b>	
Total Annual Payroll (\$000)	34
Total Annual Payroll (\$000): Forestry, Fishing, Hunting, and Ag Support	35
Total Annual Payroll (\$000): Mining	35
Total Annual Payroll (\$000): Utilities	36
Total Annual Payroll (\$000): Construction	36
Total Annual Payroll (\$000): Manufacturing	37
Total Annual Payroll (\$000): Wholesale Trade	37
Total Annual Payroll (\$000): Retail Trade	38
Total Annual Payroll (\$000): Transportation and Warehousing	38
Total Annual Payroll (\$000): Information	39
Total Annual Payroll (\$000): Finance and Insurance	39
Total Annual Payroll (\$000): Real Estate, Rental, and Leasing	40
Total Annual Payroll (\$000): Professional, Scientific, and Technical Services	40
Total Annual Payroll (\$000): Management of Companies and Enterprises	41
Total Annual Payroll (\$000): Admin, Support, Waste Management, and Remediation	41
Total Annual Payroll (\$000): Educational Services	42
Total Annual Payroll (\$000): Health Care and Social Assistance	42
Total Annual Payroll (\$000): Arts, Entertainment, and Recreation	43
Total Annual Payroll (\$000): Accommodation and Food Services	43
Total Annual Payroll (\$000): Other Services	44
Nominal Taxable Retail Sales (Million\$)	44
Retail Pull Factor	45
<b>Employment</b>	
Civilian Labor Force (BLS - Place of Residence)	46
Employed (BLS - Place of Residence)	47
Unemployed (BLS - Place of Residence)	48
Unemployment Rate (BLS - Place of Residence)	49
BEA Employment: Total (Place of Work)	49
BEA Employment: Farm	50
BEA Employment: Non-Farm	50
Average Wage per Job (\$)	51
BEA Employment: Forestry, Fishing, Hunting, and Ag Support	51
BEA Employment: Mining	52
BEA Employment: Utilities	52
BEA Employment: Construction	53
BEA Employment: Manufacturing	53
BEA Employment: Wholesale Trade	54
BEA Employment: Retail Trade	54
BEA Employment: Transportation and Warehousing	55
BEA Employment: Information	55
BEA Employment: Finance and Insurance	56
BEA Employment: Real Estate, Rental, and Leasing	56
BEA Employment: Professional and Technical Services	57
BEA Employment: Management of Companies and Enterprises	57
BEA Employment: Administrative and Waste Services	58
BEA Employment: Educational Services	58
BEA Employment: Health Care and Social Assistance	59
BEA Employment: Arts, Entertainment, and Recreation	59
BEA Employment: Government and Government Enterprises	60
BEA Employment: Accommodation and Food Services	60
BEA Employment: Other Services, Except Public Administration	61

## Kansas County Profiles Table of Contents

### Income

BEA Per Capita Personal Income (\$)	61
Sources of Personal Income: Total Personal Income (\$000)	62
Sources of Personal Income: Wages And Salaries (\$000)	62
Sources of Personal Income: Proprietors-Farm (\$000)	63
Sources of Personal Income: Proprietors-Nonfarm (\$000)	63
Sources of Personal Income: Dividends, Interest, Rent (\$000)	64
Sources of Personal Income: Transfer Payments (\$000)	64
Sources of Personal Income: Less Social Insurance (\$000)	65
HUD Median Family Income	65
HUD 30% Low-To-Medium Income (LMI) Limit - 4 Persons	66
HUD 50% Low-To-Medium Income (LMI) Limit - 4 Persons	66
HUD 80% Low-To-Medium Income (LMI) Limit - 4 Persons	66

### Banking

Bank Deposits (\$000)	67
Number of Banks	67
Number of Banking Offices	68

### Government

Tangible Assessed Valuation (million\$)	68
Sales Tax Collections	69

### Crime

Crime Index Offenses	69
Property Crimes	70
Violent Crimes	70

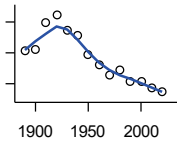
### Agriculture

Number of Farms	71
Total Acres Harvested	71
Value: Livestock and Poultry (\$000)	71
Value: Field Crops (\$000) Excluding Government Program Payments	72

**Population**

**DECENNIAL CENSUS:TOTAL POPULATION**

U.S. Census Bureau: Decennial Census

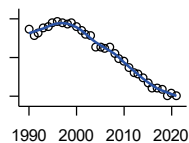


Year	County	State of Kansas	Non Metro Kansas	County Rank	Per 1000 or \$ Per Capita
1890	15,286	1,427,096	968,413	41	.
1900	15,621	1,470,495	981,206	43	.
1910	19,810	1,690,949	1,138,294	29	.
1920	21,157	1,769,257	1,153,525	25	.
1930	18,646	1,880,999	1,180,056	33	.
1940	17,723	1,801,028	1,097,216	30	.
1950	14,815	1,905,299	1,046,823	36	.
1960	13,077	2,178,611	1,021,510	38	.
1970	11,317	2,246,578	958,104	42	.
1980	12,128	2,363,679	980,085	39	.
1990	10,289	2,477,574	939,416	43	.
2000	10,332	2,688,418	959,507	42	.
2010	9,409	2,853,118	929,981	45	.
2020	8,624	2,937,880	892,006	45	.

County: county value. Kansas: state value. County Rank: highest county value ranked #1. (\$000): thousands of dollars. Nonmetro Kansas: Kansas total less Metropolitan Areas as defined by the Office of Management and Budget (OMB; released 3/6/2020). Per 1000: For nonmoney amounts, Per 1000=(county value / county population for the same year as the data) x 1000. \$ Per capita=(county value / county population for the same year as the data). Value= . indicates missing or suppressed data or value not calculated.

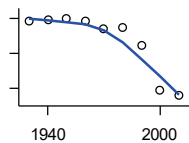
**Population**

**ESTIMATED POPULATION**



U.S. Census Bureau

Year	County	State of Kansas	Non Metro Kansas	County Rank	Per 1000 or \$ Per Capita
1990	10,247	2,481,349	938,607	43	.
1991	10,066	2,498,722	938,965	43	.
1992	10,138	2,532,394	942,759	43	.
1993	10,259	2,556,547	947,515	43	.
1994	10,314	2,580,513	952,178	43	.
1995	10,394	2,601,007	957,771	43	.
1996	10,418	2,614,554	959,455	43	.
1997	10,397	2,635,292	960,225	43	.
1998	10,380	2,660,598	960,569	43	.
1999	10,406	2,678,338	960,704	42	.
2000	10,303	2,693,681	959,230	42	.
2001	10,216	2,702,162	952,607	42	.
2002	10,104	2,713,535	945,985	42	.
2003	10,063	2,723,004	941,474	42	.
2004	9,784	2,734,373	937,623	43	.
2005	9,772	2,745,299	932,852	43	.
2006	9,747	2,762,931	928,809	43	.
2007	9,783	2,783,785	927,643	43	.
2008	9,592	2,808,076	926,248	44	.
2009	9,485	2,832,704	926,755	45	.
2010	9,392	2,858,190	930,028	45	.
2011	9,238	2,869,225	927,675	45	.
2012	9,120	2,885,257	925,152	45	.
2013	9,091	2,893,212	922,383	45	.
2014	8,970	2,900,475	917,854	45	.
2015	8,845	2,909,011	912,199	45	.
2016	8,698	2,910,844	905,099	45	.
2017	8,707	2,908,718	897,981	45	.
2018	8,666	2,911,359	892,656	45	.
2019	8,525	2,913,314	887,455	45	.
2020	8,577	2,935,880	889,750	45	.
2021	8,526	2,934,582	886,438	45	.



**URBAN POPULATION**

U.S. Census Bureau: Decennial Census

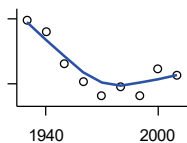
Year	County	State of Kansas	Non Metro Kansas	County Rank	Per 1000 or \$ Per Capita
1930	6,827	729,834	336,666	29	.
1940	6,900	753,941	349,228	29	.
1950	6,980	993,220	398,923	35	.
1960	6,827	1,328,741	457,447	35	.
1970	6,375	1,484,870	450,543	35	.
1980	6,461	1,575,899	474,769	35	.
1990	5,436	1,712,564	464,205	36	.
2000	2,910	1,920,081	488,011	52	.
2010	2,570	2,116,961	485,780	57	.

County: county value. Kansas: state value. County Rank: highest county value ranked #1. (\$000): thousands of dollars. Nonmetro Kansas: Kansas total less Metropolitan Areas as defined by the Office of Management and Budget (OMB; released 3/6/2020). Per 1000: For nonmoney amounts, Per 1000=(county value / county population for the same year as the data) x 1000. \$ Per capita=(county value / county population for the same year as the data). Value= . indicates missing or suppressed data or value not calculated.



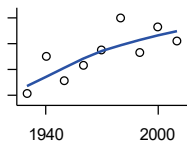
**Population**

**RURAL POPULATION**



U.S. Census Bureau

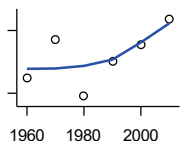
Year	County	State of Kansas	Non Metro Kansas	County Rank	Per 1000 or \$ Per Capita
1930	11,819	1,151,165	843,390	38	.
1940	10,823	1,047,087	747,988	37	.
1950	7,835	912,079	647,900	52	.
1960	6,250	849,870	564,063	57	.
1970	4,942	761,708	509,972	60	.
1980	5,667	787,780	505,873	52	.
1990	4,853	765,010	475,211	57	.
2000	7,422	768,337	471,900	36	.
2010	6,839	736,157	444,201	37	.



NET MIGRATION: DECADE ENDING...

calculated by the Institute for Policy and Social Research, The University of Kansas

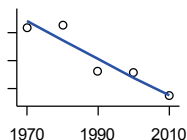
Year	County	State of Kansas	Non Metro Kansas	County Rank	Per 1000 or \$ Per Capita
1930	-4,891	-66,132	-101,869	101	-262.3
1940	-1,952	-192,649	-166,022	58	-110.1
1950	-3,913	-84,329	-158,379	94	-264.1
1960	-2,658	-38,999	-146,640	86	-203.3
1970	-1,533	-119,662	-105,116	81	-135.5
1980	949	-21,983	-6,184	18	78.2
1990	-1,699	-61,835	-79,274	90	-165.1
2000	335	68,960	4,247	32	32.4
2010	-783	5,578	-50,648	90	-83.2



MEDIAN AGE

U.S. Census Bureau: Decennial Census

Year	County	State of Kansas	Non Metro Kansas	County Rank	Per 1000 or \$ Per Capita
1960	37.4	26.9	.	24	.
1970	41.1	28.7	.	16	.
1980	35.7	30.1	.	38	.
1990	39.1	32.9	.	27	.
2000	40.6	35.2	.	39	.
2010	43.1	36.0	.	45	.



POPULATION UNDER 18 (DECENNIAL CENSUS)

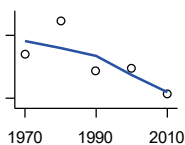
U.S. Census Bureau: Decennial Census

Year	County	State of Kansas	Non Metro Kansas	County Rank	Per 1000 or \$ Per Capita
1970	3,277	746,354	306,227	43	.
1980	3,298	649,035	263,919	37	.
1990	2,639	661,614	250,107	42	.
2000	2,625	712,993	250,757	42	.
2010	2,293	726,939	229,213	43	.

County: county value. Kansas: state value. County Rank: highest county value ranked #1. (\$000): thousands of dollars. Nonmetro Kansas: Kansas total less Metropolitan Areas as defined by the Office of Management and Budget (OMB; released 3/6/2020). Per 1000: For nonmoney amounts, Per 1000=(county value / county population for the same year as the data) x 1000. \$ Per capita=(county value / county population for the same year as the data). Value= . indicates missing or suppressed data or value not calculated.

**Population**

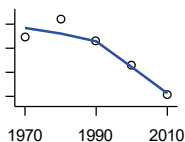
**POPULATION AGE 18 AND OVER  
(DECENNIAL CENSUS)**



U.S. Census Bureau: Decennial Census

Year	County	State of Kansas	Non Metro Kansas	County Rank	Per 1000 or \$ Per Capita
1970	8,040	1,500,224	654,288	39	.
1980	8,846	1,714,282	716,684	40	.
1990	7,650	1,815,960	689,309	42	.
2000	7,707	1,975,425	709,154	42	.
2010	7,116	2,126,179	700,768	45	.

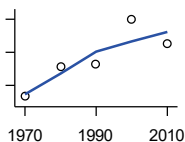
**POPULATION AGE 65 AND OVER  
(DECENNIAL CENSUS)**



U.S. Census Bureau: Decennial Census

Year	County	State of Kansas	Non Metro Kansas	County Rank	Per 1000 or \$ Per Capita
1970	2,295	266,201	149,049	34	.
1980	2,443	306,263	164,932	35	.
1990	2,265	342,571	168,579	39	.
2000	2,061	356,229	161,769	40	.
2010	1,813	376,116	154,214	44	.

**POPULATION AGE 85 AND OVER  
(DECENNIAL CENSUS)**



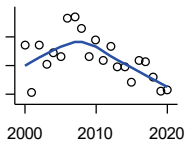
U.S. Census Bureau: Decennial Census

Year	County	State of Kansas	Non Metro Kansas	County Rank	Per 1000 or \$ Per Capita
1970	208	23,899	13,698	36	.
1980	254	33,455	18,804	39	.
1990	258	42,241	22,970	48	.
2000	325	51,770	26,644	38	.
2010	289	59,318	26,197	42	.

County: county value. Kansas: state value. County Rank: highest county value ranked #1. (\$000): thousands of dollars. Nonmetro Kansas: Kansas total less Metropolitan Areas as defined by the Office of Management and Budget (OMB; released 3/6/2020). Per 1000: For nonmoney amounts, Per 1000=(county value / county population for the same year as the data) x 1000. \$ Per capita=(county value / county population for the same year as the data). Value= . indicates missing or suppressed data or value not calculated.

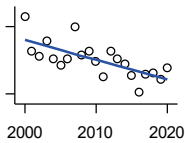
**Vital Statistics and Health**

**BIRTHS (LIVE)**



Kansas Department of Health and Environment

Year	County	State of Kansas	Non Metro Kansas	County Rank	Per 1000 or \$ Per Capita
2000	124	39,654	12,980	43	12.0
2001	91	38,832	12,527	51	8.9
2002	124	39,338	12,476	41	12.3
2003	111	39,353	12,342	44	11.0
2004	119	39,553	12,398	44	12.2
2005	116	39,701	12,382	42	11.9
2006	143	40,896	12,726	38	14.7
2007	144	41,951	12,990	38	14.7
2008	136	41,815	12,970	40	14.2
2009	116	41,388	12,949	43	12.2
2010	128	40,439	12,200	41	13.6
2011	114	39,628	12,098	43	12.3
2012	123	40,304	12,217	42	13.5
2013	109	38,805	11,877	45	12.0
2014	109	39,193	12,052	46	12.2
2015	98	39,126	11,836	48	11.1
2016	114	38,048	11,467	43	13.1
2017	113	36,464	10,968	43	13.0
2018	102	36,268	10,826	47	11.8
2019	92	35,395	10,506	49	10.8
2020	93	34,368	10,222	47	10.8



**DEATHS**

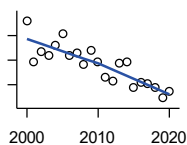
Kansas Department of Health and Environment

Year	County	State of Kansas	Non Metro Kansas	County Rank	Per 1000 or \$ Per Capita
2000	169	24,676	11,175	36	16.4
2001	138	24,590	10,807	40	13.5
2002	134	24,968	11,079	41	13.3
2003	147	24,417	10,615	38	14.6
2004	131	23,720	10,369	42	13.4
2005	125	24,632	10,599	45	12.8
2006	131	24,489	10,538	43	13.4
2007	160	24,413	10,601	37	16.4
2008	135	24,896	10,593	41	14.1
2009	138	23,997	9,938	39	14.5
2010	129	24,428	10,105	40	13.7
2011	115	25,114	10,520	44	12.4
2012	138	25,084	10,259	38	15.1
2013	131	25,347	10,249	39	14.4
2014	127	25,731	10,275	41	14.2
2015	116	26,611	10,539	43	13.1
2016	102	26,129	10,231	49	11.7
2017	117	26,725	10,452	42	13.4
2018	119	27,213	10,389	45	13.7
2019	113	27,312	10,569	46	13.3
2020	123	31,667	11,850	46	14.3

County: county value. Kansas: state value. County Rank: highest county value ranked #1. (\$000): thousands of dollars. Nonmetro Kansas: Kansas total less Metropolitan Areas as defined by the Office of Management and Budget (OMB; released 3/6/2020). Per 1000: For nonmoney amounts, Per 1000=(county value / county population for the same year as the data) x 1000. \$ Per capita=(county value / county population for the same year as the data). Value= . indicates missing or suppressed data or value not calculated.

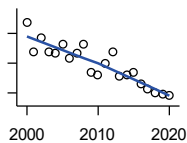
**Vital Statistics and Health**

**MARRIAGES**



Kansas Department of Health and Environment

Year	County	State of Kansas	Non Metro Kansas	County Rank	Per 1000 or \$ Per Capita
2000	92	20,426	7,333	34	8.9
2001	59	20,457	7,441	50	5.8
2002	67	19,783	6,794	46	6.6
2003	64	18,722	6,469	44	6.4
2004	72	19,174	6,756	42	7.4
2005	82	18,745	6,481	38	8.4
2006	64	18,836	6,433	44	6.6
2007	66	18,910	6,464	40	6.7
2008	57	18,717	6,283	47	5.9
2009	68	18,268	6,015	37	7.2
2010	59	18,150	5,925	44	6.3
2011	46	17,897	5,977	52	5.0
2012	43	18,154	5,752	53	4.7
2013	58	17,328	5,533	43	6.4
2014	59	17,655	5,535	42	6.6
2015	38	17,595	5,400	54	4.3
2016	42	17,948	5,340	50	4.8
2017	41	17,274	5,163	52	4.7
2018	38	16,362	4,999	53	4.4
2019	29	15,403	4,650	65	3.4
2020	35	14,038	4,066	50	4.1



**DIVORCES AND ANNULMENTS**

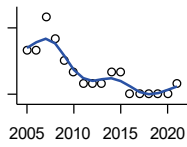
Kansas Department of Health and Environment

Year	County	State of Kansas	Non Metro Kansas	County Rank	Per 1000 or \$ Per Capita
2000	67	10,105	4,000	27	6.5
2001	48	9,885	3,818	38	4.7
2002	57	9,645	3,716	33	5.6
2003	48	8,644	3,464	31	4.8
2004	47	8,759	3,506	36	4.8
2005	53	8,476	3,311	32	5.4
2006	43	9,145	3,387	37	4.4
2007	47	9,347	3,402	33	4.8
2008	53	9,818	3,655	33	5.5
2009	34	10,333	3,463	44	3.6
2010	32	10,579	3,530	46	3.4
2011	40	10,445	3,347	39	4.3
2012	48	9,782	3,040	33	5.3
2013	31	9,085	2,973	43	3.4
2014	32	8,441	2,682	38	3.6
2015	34	8,036	2,704	39	3.8
2016	26	7,198	2,424	42	3.0
2017	23	6,494	2,315	42	2.6
2018	20	6,538	2,269	47	2.3
2019	19	6,398	2,357	46	2.2
2020	18	5,169	1,866	46	2.1

County: county value. Kansas: state value. County Rank: highest county value ranked #1. (\$000): thousands of dollars. Nonmetro Kansas: Kansas total less Metropolitan Areas as defined by the Office of Management and Budget (OMB; released 3/6/2020). Per 1000: For nonmoney amounts, Per 1000=(county value / county population for the same year as the data) x 1000. \$ Per capita=(county value / county population for the same year as the data). Value= . indicates missing or suppressed data or value not calculated.

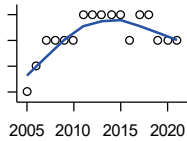
**Vital Statistics and Health**

**PHYSICIANS: M.D. PHYSICIANS**



Kansas Department of Health and Environment (1981-2005,2010-);Kansas Health Policy Authority (2006-2009)

Year	County	State of Kansas	Non Metro Kansas	County Rank	Per 1000 or \$ Per Capita
2005	10	4,241	912	36	1.0
2006	10	4,310	953	37	1.0
2007	13	5,309	1,046	34	1.3
2008	11	5,110	1,016	36	1.1
2009	9	5,249	996	38	0.9
2010	8	5,192	979	42	0.9
2011	7	5,243	983	44	0.8
2012	7	5,693	1,033	45	0.8
2013	7	6,106	1,071	44	0.8
2014	8	5,839	951	39	0.9
2015	8	5,703	855	36	0.9
2016	6	4,278	643	42	0.7
2017	6	6,332	1,047	49	0.7
2018	6	6,079	1,065	48	0.7
2019	6	6,435	1,036	47	0.7
2020	6	6,668	1,045	47	0.7
2021	7	6,745	1,042	45	0.8



**PHYSICIANS: D.O. PHYSICIANS**

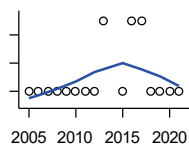
Kansas Department of Health and Environment (1981-2005,2010-);Kansas Health Policy Authority (2006-2009)

Year	County	State of Kansas	Non Metro Kansas	County Rank	Per 1000 or \$ Per Capita
2005	0	553	174	105	0.0
2006	1	508	171	66	0.1
2007	2	569	169	48	0.2
2008	2	558	166	48	0.2
2009	2	564	160	48	0.2
2010	2	583	169	45	0.2
2011	3	502	152	30	0.3
2012	3	718	200	36	0.3
2013	3	829	210	34	0.3
2014	3	817	189	34	0.3
2015	3	819	190	34	0.3
2016	2	632	136	34	0.2
2017	3	579	129	30	0.3
2018	3	871	164	30	0.3
2019	2	951	212	42	0.2
2020	2	1,018	204	42	0.2
2021	2	1,095	217	47	0.2

County: county value. Kansas: state value. County Rank: highest county value ranked #1. (\$000): thousands of dollars. Nonmetro Kansas: Kansas total less Metropolitan Areas as defined by the Office of Management and Budget (OMB; released 3/6/2020). Per 1000: For nonmoney amounts, Per 1000=(county value / county population for the same year as the data) x 1000. \$ Per capita=(county value / county population for the same year as the data). Value= . indicates missing or suppressed data or value not calculated.

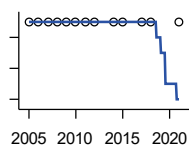
**Vital Statistics and Health**

**DENTISTS**



Kansas Department of Health and Environment (1981-2006,2010-);Kansas Health Policy Authority (2007-2009)

Year	County	State of Kansas	Non Metro Kansas	County Rank	Per 1000 or \$ Per Capita
2005	2	1,347	363	69	0.2
2006	2	1,381	361	68	0.2
2007	2	1,335	350	68	0.2
2008	2	1,392	353	67	0.2
2009	2	1,353	350	67	0.2
2010	2	1,401	365	70	0.2
2011	2	1,338	346	70	0.2
2012	2	1,434	392	69	0.2
2013	3	1,212	328	52	0.3
2015	2	1,240	327	69	0.2
2016	3	1,456	350	52	0.3
2017	3	1,467	350	48	0.3
2018	2	1,604	359	64	0.2
2019	2	1,646	355	66	0.2
2020	2	1,646	355	66	0.2
2021	2	1,688	362	66	0.2



**NUMBER OF HOSPITALS**

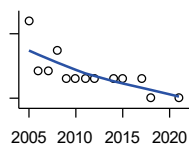
American Hospital Association, American Hospital Association Guide to the Health Care Field

Year	County	State of Kansas	Non Metro Kansas	County Rank	Per 1000 or \$ Per Capita
2005	2	158	105	31	.
2006	2	158	105	31	.
2007	2	159	104	32	.
2008	2	159	104	32	.
2009	2	158	105	32	.
2010	2	158	104	31	.
2011	2	158	103	31	.
2012	2	157	103	31	.
2014	2	156	.	31	.
2015	2	155	103	32	.
2017	2	157	102	30	.
2018	2	154	99	29	.
2021	2	151	.	27	.

County: county value. Kansas: state value. County Rank: highest county value ranked #1. (\$000): thousands of dollars. Nonmetro Kansas: Kansas total less Metropolitan Areas as defined by the Office of Management and Budget (OMB; released 3/6/2020). Per 1000: For nonmoney amounts, Per 1000=(county value / county population for the same year as the data) x 1000. \$ Per capita=(county value / county population for the same year as the data). Value= . indicates missing or suppressed data or value not calculated.

**Vital Statistics and Health**

**NUMBER OF HOSPITAL BEDS**

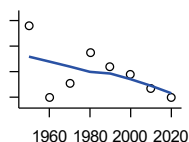


Kansas Department of Health and Environment

Year	County	State of Kansas	Non Metro Kansas	County Rank	Per 1000 or \$ Per Capita
2005	76	12,389	5,687	41	7.8
2006	53	11,992	5,514	53	5.4
2007	53	12,171	5,637	52	5.4
2008	62	12,332	5,700	47	6.5
2009	49	12,283	5,652	60	5.2
2010	49	12,218	5,521	60	5.2
2011	49	12,182	5,335	58	5.3
2012	49	12,002	5,355	58	5.4
2014	49	12,034	.	55	5.5
2015	49	11,926	5,330	54	5.5
2017	49	11,491	4,825	48	5.6
2018	40	11,448	4,583	53	4.6
2021	40	11,199	.	51	4.7

**Housing**

**HOUSING UNITS (DECENNIAL)**



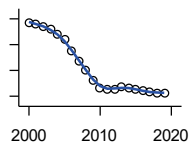
U.S. Census Bureau: Decennial Census

Year	County	State of Kansas	Non Metro Kansas	County Rank	Per 1000 or \$ Per Capita
1950	5,910	586,650	328,210	29	398.9
1960	4,490	672,899	329,380	38	343.4
1970	4,780	789,735	363,824	37	422.4
1980	5,372	955,207	416,877	39	442.9
1990	5,091	1,044,112	417,062	39	494.8
2000	4,937	1,131,395	422,218	39	477.8
2010	4,682	1,233,215	424,050	41	497.6
2020	4,485	1,275,689	413,120	42	520.1

County: county value. Kansas: state value. County Rank: highest county value ranked #1. (\$000): thousands of dollars. Nonmetro Kansas: Kansas total less Metropolitan Areas as defined by the Office of Management and Budget (OMB; released 3/6/2020). Per 1000: For nonmoney amounts, Per 1000=(county value / county population for the same year as the data) x 1000. \$ Per capita=(county value / county population for the same year as the data). Value= . indicates missing or suppressed data or value not calculated.

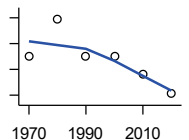
**Housing**

**HOUSING UNITS (ESTIMATED)**



U.S. Census Bureau

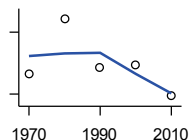
Year	County	State of Kansas	Non Metro Kansas	County Rank	Per 1000 or \$ Per Capita
2000	4,937	1,134,529	422,560	39	477.8
2001	4,931	1,146,858	423,876	39	482.7
2002	4,922	1,160,129	425,089	39	487.1
2003	4,909	1,171,620	425,936	40	487.8
2004	4,891	1,184,702	426,593	40	499.9
2005	4,868	1,195,791	426,964	40	498.2
2006	4,828	1,206,692	426,713	41	495.3
2007	4,788	1,217,608	426,090	41	489.4
2008	4,753	1,225,625	425,768	41	495.5
2009	4,712	1,230,552	424,776	41	496.8
2010	4,681	1,234,456	424,174	41	497.5
2011	4,679	1,238,052	424,549	41	506.5
2012	4,677	1,241,992	425,116	41	512.8
2013	4,686	1,246,675	425,699	41	515.5
2014	4,682	1,253,284	426,269	41	522.0
2015	4,677	1,258,999	426,844	41	528.8
2016	4,671	1,265,684	427,465	41	537.0
2017	4,665	1,273,536	427,746	41	535.8
2018	4,663	1,280,649	428,099	41	538.1
2019	4,664	1,288,401	428,495	41	547.1



**OCCUPIED HOUSING UNITS**

U.S. Census Bureau: Decennial Census

Year	County	State of Kansas	Non Metro Kansas	County Rank	Per 1000 or \$ Per Capita
1970	4,199	727,364	326,494	39	371.0
1980	4,773	872,239	371,693	38	393.6
1990	4,194	944,726	365,901	41	407.6
2000	4,203	1,037,891	375,313	40	406.8
2010	3,933	1,112,096	370,269	43	418.0
2020	3,636	1,151,360	356,330	45	421.6



**OWNER OCCUPIED HOUSING UNITS**

U.S. Census Bureau: Decennial Census

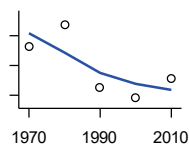
Year	County	State of Kansas	Non Metro Kansas	County Rank	Per 1000 or \$ Per Capita
1970	3,193	502,585	236,338	36	282.1
1980	3,730	612,433	277,096	38	307.6
1990	3,257	641,762	263,099	39	316.6
2000	3,283	718,703	271,350	39	317.8
2010	2,980	753,532	261,763	41	316.7

County: county value. Kansas: state value. County Rank: highest county value ranked #1. (\$000): thousands of dollars. Nonmetro Kansas: Kansas total less Metropolitan Areas as defined by the Office of Management and Budget (OMB; released 3/6/2020). Per 1000: For nonmoney amounts, Per 1000=(county value / county population for the same year as the data) x 1000. \$ Per capita=(county value / county population for the same year as the data). Value= . indicates missing or suppressed data or value not calculated.



**Housing**

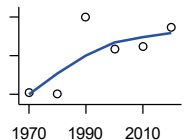
**RENTER OCCUPIED HOUSING UNITS**



U.S. Census Bureau: Decennial Census

Year	County	State of Kansas	Non Metro Kansas	County Rank	Per 1000 or \$ Per Capita
1970	1,006	224,779	90,156	39	88.9
1980	1,043	259,806	94,597	39	86.0
1990	937	302,964	102,802	43	91.1
2000	920	319,188	103,963	42	89.0
2010	953	358,564	108,506	43	101.3

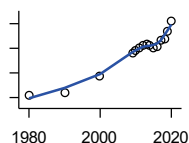
**VACANT HOUSING UNITS**



U.S. Census Bureau: Decennial Census

Year	County	State of Kansas	Non Metro Kansas	County Rank	Per 1000 or \$ Per Capita
1970	509	60,058	35,954	31	45.0
1980	503	77,912	41,584	42	41.5
1990	897	99,386	51,161	27	87.2
2000	734	93,309	46,904	31	71.0
2010	749	121,119	53,781	39	79.6
2020	849	124,329	56,790	34	98.4

**MEDIAN VALUE (\$): OWNER OCCUPIED HOUSING UNITS**



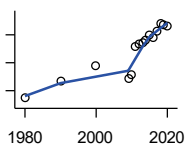
U.S. Census Bureau, Decennial Census (- 2000), (2009 -) American Community Survey five-year average ending in year shown.

Year	County	State of Kansas	Non Metro Kansas	County Rank	Per 1000 or \$ Per Capita
1980	21,600	37,800	.	92	.
1990	23,500	52,200	.	93	.
2000	37,700	83,500	.	90	.
2009	55,900	118,500	.	85	.
2010	58,500	122,600	.	85	.
2011	60,300	125,500	.	86	.
2012	62,300	127,400	.	84	.
2013	63,200	128,400	.	85	.
2014	62,700	129,400	.	91	.
2015	60,100	132,000	.	96	.
2016	61,700	135,300	.	96	.
2017	66,700	139,200	.	94	.
2018	67,400	145,400	.	94	.
2019	73,500	151,900	.	89	.
2020	82,200	157,600	.	74	.

County: county value. Kansas: state value. County Rank: highest county value ranked #1. (\$000): thousands of dollars. Nonmetro Kansas: Kansas total less Metropolitan Areas as defined by the Office of Management and Budget (OMB; released 3/6/2020). Per 1000: For nonmoney amounts, Per 1000=(county value / county population for the same year as the data) x 1000. \$ Per capita=(county value / county population for the same year as the data). Value= . indicates missing or suppressed data or value not calculated.

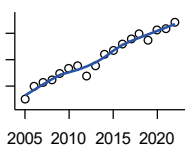
**Housing**

**MEDIAN CONTRACT RENT (\$)**



U.S. Census Bureau, Decennial Census (- 2000), (2009 -) American Community Survey five-year average ending in year shown.

Year	County	State of Kansas	Non Metro Kansas	County Rank	Per 1000 or \$ Per Capita
1980	146	219	.	84	.
1990	268	372	.	53	.
2000	382	498	.	47	.
2009	290	491	.	78	.
2010	311	507	.	73	.
2011	512	699	.	66	.
2012	535	715	.	61	.
2013	540	732	.	69	.
2014	565	748	.	64	.
2015	596	757	.	56	.
2016	578	775	.	67	.
2017	626	801	.	53	.
2018	678	831	.	34	.
2019	675	850	.	39	.
2020	663	863	.	54	.



**FAIR MARKET RENT: 2 BEDROOMS**

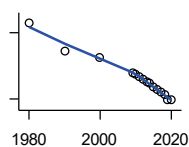
U.S. Department of Housing and Urban Development (HUD)

Year	County	State of Kansas	Non Metro Kansas	County Rank	Per 1000 or \$ Per Capita
2005	449	.	.	84	.
2006	497	.	.	105	.
2007	512	.	.	105	.
2008	525	628	.	105	.
2009	547	653	.	105	.
2010	566	678	.	105	.
2011	575	684	.	105	.
2012	540	660	.	105	.
2013	577	712	.	105	.
2014	622	746	.	105	.
2015	634	756	.	105	.
2016	658	781	.	105	.
2017	681	811	.	105	.
2018	697	815	.	105	.
2019	672	828	.	105	.
2020	714	855	.	105	.
2021	718	874	.	105	.
2022	742	879	.	105	.

County: county value. Kansas: state value. County Rank: highest county value ranked #1. (\$000): thousands of dollars. Nonmetro Kansas: Kansas total less Metropolitan Areas as defined by the Office of Management and Budget (OMB; released 3/6/2020). Per 1000: For nonmoney amounts, Per 1000=(county value / county population for the same year as the data) x 1000. \$ Per capita=(county value / county population for the same year as the data). Value= . indicates missing or suppressed data or value not calculated.

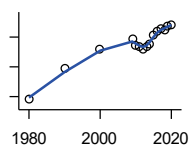
**Education**

**POPULATION AGE 25+**



U.S. Census Bureau, Decennial Census (- 2000), (2009 -) American Community Survey five-year average ending in year shown.

Year	County	State of Kansas	Non Metro Kansas	County Rank	Per 1000 or \$ Per Capita
1980	7,723	1,388,102	596,639	.	.
1990	7,087	1,565,936	608,745	.	.
2000	6,944	1,701,207	618,131	.	.
2009	6,604	1,775,427	600,188	.	.
2010	6,567	1,802,904	608,716	.	.
2011	6,511	1,822,400	610,386	.	.
2012	6,447	1,838,079	611,103	.	.
2013	6,387	1,850,010	610,374	.	.
2014	6,362	1,861,894	609,612	.	.
2015	6,271	1,869,698	606,967	.	.
2016	6,218	1,878,495	604,563	.	.
2017	6,150	1,886,741	601,076	.	.
2018	6,085	1,894,675	598,487	.	.
2019	5,997	1,902,279	595,501	.	.
2020	5,991	1,911,990	593,923	.	.



**PERCENT HS GRADUATE OR HIGHER AGE 25+**

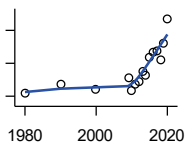
U.S. Census Bureau, Decennial Census (- 2000), (2009 -) American Community Survey five-year average ending in year shown.

Year	County	State of Kansas	Non Metro Kansas	County Rank	Per 1000 or \$ Per Capita
1980	64.0	73.3	.	90	.
1990	74.6	81.3	.	78	.
2000	81.1	86.0	.	86	.
2009	84.2	89.0	.	90	.
2010	82.3	89.2	.	93	.
2011	81.8	89.5	.	95	.
2012	80.8	89.7	.	94	.
2013	81.9	89.8	.	94	.
2014	82.6	90.0	.	94	.
2015	85.6	90.2	.	91	.
2016	87.0	90.3	.	88	.
2017	87.8	90.5	.	84	.
2018	87.3	90.7	.	87	.
2019	88.5	91.0	.	84	.
2020	89.3	91.4	.	80	.

County: county value. Kansas: state value. County Rank: highest county value ranked #1. (\$000): thousands of dollars. Nonmetro Kansas: Kansas total less Metropolitan Areas as defined by the Office of Management and Budget (OMB; released 3/6/2020). Per 1000: For nonmoney amounts, Per 1000=(county value / county population for the same year as the data) x 1000. \$ Per capita=(county value / county population for the same year as the data). Value= . indicates missing or suppressed data or value not calculated.

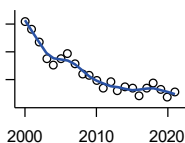
**Education**

**PERCENT BACHELORS DEGREE OR HIGHER AGE 25+**



U.S. Census Bureau, Decennial Census (- 2000), (2009 -) American Community Survey five-year average ending in year shown.

Year	County	State of Kansas	Non Metro Kansas	County Rank	Per 1000 or \$ Per Capita
1980	10.3	17.0	.	77	.
1990	11.4	21.1	.	85	.
2000	10.9	25.8	.	104	.
2009	12.2	28.8	.	103	.
2010	10.7	29.3	.	105	.
2011	11.4	29.7	.	105	.
2012	11.7	30.0	.	105	.
2013	13.0	30.3	.	103	.
2014	12.5	30.7	.	105	.
2015	14.7	31.0	.	101	.
2016	15.3	31.6	.	99	.
2017	15.5	32.3	.	100	.
2018	14.4	32.9	.	102	.
2019	16.5	33.4	.	96	.
2020	19.4	33.9	.	84	.



**PUBLIC SCHOOL ENROLLMENT (FTE) SCHOOL YEAR BEGINNING...**

Kansas State Department of Education

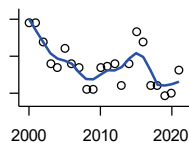
Year	County	State of Kansas	Non Metro Kansas	County Rank	Per 1000 or \$ Per Capita
2000	2,020.3	448,150.8	166,722.5	39	195.5
2001	1,966.5	447,047.1	164,365.0	40	192.5
2002	1,870.0	444,860.3	161,555.4	40	185.1
2003	1,753.9	443,620.6	159,130.2	41	174.3
2004	1,702.4	441,957.2	156,566.3	41	174.0
2005	1,752.0	442,708.4	155,197.2	41	179.3
2006	1,787.3	444,878.7	153,842.3	40	183.4
2007	1,717.1	446,831.3	152,337.1	41	175.5
2008	1,640.0	447,730.0	150,572.7	41	171.0
2009	1,629.9	453,202.5	151,246.8	41	171.8
2010	1,595.4	455,405.0	151,023.8	42	169.6
2011	1,537.1	456,000.5	150,257.9	42	166.4
2012	1,584.7	458,496.4	150,463.0	43	173.8
2013	1,515.7	461,950.0	150,420.9	44	166.7
2014	1,546.5	464,395.4	150,499.4	44	172.4
2015	1,536.3	463,504.0	149,539.3	44	173.7
2016	1,482.1	459,920.3	147,293.5	44	170.4
2017	1,543.0	477,977.9	152,096.3	44	177.2
2018	1,579.1	476,481.7	150,456.8	43	182.2
2019	1,532.8	476,525.1	150,045.2	44	179.8
2020	1,470.5	462,088.0	146,369.6	45	170.5
2021	1,513.1	463,652.4	147,500.4	44	177.5

County: county value. Kansas: state value. County Rank: highest county value ranked #1. (\$000): thousands of dollars. Nonmetro Kansas: Kansas total less Metropolitan Areas as defined by the Office of Management and Budget (OMB; released 3/6/2020). Per 1000: For nonmoney amounts, Per 1000=(county value / county population for the same year as the data) x 1000. \$ Per capita=(county value / county population for the same year as the data). Value= . indicates missing or suppressed data or value not calculated.

**Education**

**PUPIL/TEACHER RATIO SCHOOL YEAR BEGINNING...**

Kansas State Department of Education

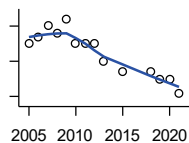


Year	County	State of Kansas	Non Metro Kansas	County Rank	Per 1000 or \$ Per Capita
2000	13.9	15.4	13.9	40	.
2001	13.9	15.3	13.8	39	.
2002	13.4	15.4	13.9	45	.
2003	12.8	15.5	13.8	56	.
2004	12.7	15.3	13.6	54	.
2005	13.2	15.0	13.4	43	.
2006	12.8	14.7	13.2	43	.
2007	12.7	14.6	13.1	45	.
2008	12.1	14.4	12.9	51	.
2009	12.1	14.8	13.2	63	.
2010	12.7	15.2	13.6	52	.
2011	12.7	15.1	13.5	52	.
2012	12.8	15.1	13.5	51	.
2013	12.2	15.1	13.5	63	.
2014	12.8	15.0	13.6	52	.
2015	13.7	15.2	13.9	39	.
2016	13.4	15.1	13.7	40	.
2017	12.2	15.5	13.9	66	.
2018	12.2	15.3	13.8	62	.
2019	11.9	15.2	13.7	65	.
2020	12.0	14.7	13.4	60	.
2021	12.6	14.8	13.5	52	.

**Social Environment**

**CHILD CARE FACILITIES: TOTAL CHILD CARE FACILITIES**

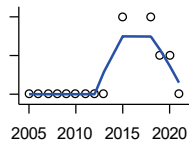
Kansas Department of Health and Environment, Bureau of Adult and Child Care



Year	County	State of Kansas	Non Metro Kansas	County Rank	Per 1000 or \$ Per Capita
2005	25	8,258	3,378	60	2.6
2006	27	8,442	3,429	59	2.8
2007	30	8,241	3,317	51	3.1
2008	28	8,011	3,150	52	2.9
2009	32	7,853	3,066	46	3.4
2010	25	7,354	2,858	54	2.7
2011	25	6,835	2,623	50	2.7
2012	25	6,346	2,409	48	2.7
2013	20	5,754	2,179	51	2.2
2015	17	5,289	2,146	57	1.9
2018	17	4,607	1,904	58	2.0
2019	15	4,287	1,774	56	1.8
2020	15	4,274	1,798	60	1.7
2021	11	4,002	1,700	68	1.3

County: county value. Kansas: state value. County Rank: highest county value ranked #1. (\$000): thousands of dollars. Nonmetro Kansas: Kansas total less Metropolitan Areas as defined by the Office of Management and Budget (OMB; released 3/6/2020). Per 1000: For nonmoney amounts, Per 1000=(county value / county population for the same year as the data) x 1000. \$ Per capita=(county value / county population for the same year as the data). Value= . indicates missing or suppressed data or value not calculated.

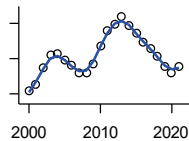
**Social Environment**



**CHILD CARE FACILITIES: PRESCHOOLS**

Kansas Department of Health and Environment, Bureau of Adult and Child Care

Year	County	State of Kansas	Non Metro Kansas	County Rank	Per 1000 or \$ Per Capita
2005	0	243	140	105	0.0
2006	0	221	127	105	0.0
2007	0	208	119	105	0.0
2008	0	204	114	105	0.0
2009	0	194	107	105	0.0
2010	0	194	112	105	0.0
2011	0	209	123	105	0.0
2012	0	201	121	105	0.0
2013	0	140	84	105	0.0
2015	2	185	113	42	0.2
2018	2	150	94	41	0.2
2019	1	134	83	56	0.1
2020	1	126	78	55	0.1
2021	0	120	74	105	0.0



**FOOD STAMP BENEFICIARIES**

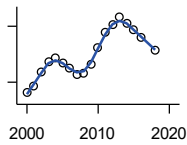
Kansas Social and Rehabilitation Services

Year	County	State of Kansas	Non Metro Kansas	County Rank	Per 1000 or \$ Per Capita
2000	629	110,619	44,825	34	60.9
2001	710	117,241	46,741	34	69.5
2002	899	131,726	52,342	31	89.0
2003	1,035	155,908	61,280	31	102.9
2004	1,058	167,971	65,852	32	108.1
2005	979	175,710	67,261	34	100.2
2006	918	182,821	67,487	34	94.2
2007	834	184,035	66,979	35	85.2
2008	832	187,377	67,160	35	86.7
2009	941	208,007	73,637	34	99.2
2010	1,143	259,609	90,919	35	121.5
2011	1,324	296,542	101,155	35	143.3
2012	1,392	303,257	102,478	35	152.6
2013	1,478	316,424	105,345	34	162.6
2014	1,380	301,377	100,761	34	153.8
2015	1,291	277,614	93,353	34	146.0
2016	1,184	258,412	88,343	34	136.1
2017	1,112	239,592	82,070	34	127.7
2018	1,027	219,738	75,208	34	118.5
2019	904	205,261	69,899	35	106.0
2020	841	198,457	66,721	35	97.5
2021	911	203,424	68,883	35	106.8

County: county value. Kansas: state value. County Rank: highest county value ranked #1. (\$000): thousands of dollars. Nonmetro Kansas: Kansas total less Metropolitan Areas as defined by the Office of Management and Budget (OMB; released 3/6/2020). Per 1000: For nonmoney amounts, Per 1000=(county value / county population for the same year as the data) x 1000. \$ Per capita=(county value / county population for the same year as the data). Value= . indicates missing or suppressed data or value not calculated.

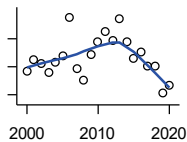
**Social Environment**

**PERCENT OF POPULATION RECEIVING FOOD STAMPS**



U.S. Dept. of Agriculture Food and Nutrition Service (1990-1997); Kansas Social and Rehabilitation Services (1998- )

Year	County	State of Kansas	Non Metro Kansas	County Rank	Per 1000 or \$ Per Capita
2000	6.1	4.1	.	16	.
2001	6.9	4.3	.	13	.
2002	8.9	4.9	.	5	.
2003	10.3	5.7	.	4	.
2004	10.8	6.2	.	5	.
2005	10.0	6.4	.	12	.
2006	9.4	6.6	.	13	.
2007	8.5	6.6	.	16	.
2008	8.7	6.7	.	16	.
2009	9.9	7.4	.	16	.
2010	12.1	9.1	.	17	.
2011	14.2	10.3	.	12	.
2012	15.3	10.5	.	9	.
2013	16.3	10.9	.	6	.
2014	15.4	10.4	.	9	.
2015	14.6	9.6	.	6	.
2016	13.6	8.9	.	9	.
2018	11.9	7.5	.	10	.



**ESTIMATED NUMBER OF PEOPLE IN POVERTY**

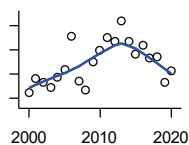
U.S. Census Bureau, Small Area Income and Poverty Estimates

Year	County	State of Kansas	Non Metro Kansas	County Rank	Per 1000 or \$ Per Capita
2000	1,264	235,087	98,984	36	122.3
2001	1,351	252,134	106,257	35	132.2
2002	1,325	265,673	107,542	36	131.1
2003	1,263	278,163	107,323	37	125.5
2004	1,333	297,733	111,534	37	136.2
2005	1,375	310,667	118,768	38	140.7
2006	1,653	327,102	123,700	35	169.6
2007	1,290	301,828	111,953	37	131.9
2008	1,206	307,804	113,015	38	125.7
2009	1,389	359,692	123,394	38	146.4
2010	1,474	374,677	131,502	38	156.7
2011	1,553	383,859	134,912	37	168.1
2012	1,492	392,095	133,800	37	163.6
2013	1,647	391,718	134,067	36	181.2
2014	1,478	381,506	130,213	37	164.8
2015	1,360	366,069	123,073	38	153.8
2016	1,402	343,773	121,314	37	161.2
2017	1,303	335,371	116,854	39	149.6
2018	1,307	336,892	114,490	38	150.8
2019	1,110	319,931	110,692	41	130.2
2020	1,172	300,931	100,998	39	135.9

County: county value. Kansas: state value. County Rank: highest county value ranked #1. (\$000): thousands of dollars. Nonmetro Kansas: Kansas total less Metropolitan Areas as defined by the Office of Management and Budget (OMB; released 3/6/2020). Per 1000: For nonmoney amounts, Per 1000=(county value / county population for the same year as the data) x 1000. \$ Per capita=(county value / county population for the same year as the data). Value= . indicates missing or suppressed data or value not calculated.

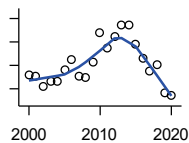
**Social Environment**

**ESTIMATED % OF PEOPLE IN POVERTY**



U.S. Census Bureau, Small Area Income and Poverty Estimates

Year	County	State of Kansas	Non Metro Kansas	County Rank	Per 1000 or \$ Per Capita
2000	12.5	8.9	.	12	.
2001	13.6	9.5	.	13	.
2002	13.3	10.0	.	16	.
2003	12.9	10.4	.	19	.
2004	13.7	11.1	.	18	.
2005	14.4	11.7	.	22	.
2006	17.1	12.2	.	10	.
2007	13.4	11.2	.	22	.
2008	12.7	11.3	.	31	.
2009	15.0	13.2	.	23	.
2010	16.0	13.5	.	19	.
2011	17.0	13.8	.	17	.
2012	16.7	14.0	.	18	.
2013	18.4	13.9	.	8	.
2014	16.7	13.5	.	19	.
2015	15.6	12.9	.	18	.
2016	16.4	12.2	.	12	.
2017	15.3	11.9	.	18	.
2018	15.4	11.9	.	17	.
2019	13.3	11.3	.	32	.
2020	14.3	10.6	.	12	.



**EST. NUMBER OF RELATED CHILDREN AGE 5 TO 17 IN FAMILIES IN POVERTY**

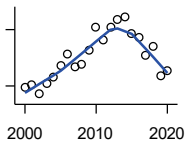
U.S. Census Bureau, Small Area Income and Poverty Estimates

Year	County	State of Kansas	Non Metro Kansas	County Rank	Per 1000 or \$ Per Capita
2000	280	50,388	21,854	36	27.1
2001	276	53,755	23,094	36	27.0
2002	254	52,453	21,423	36	25.1
2003	267	55,419	21,809	36	26.5
2004	267	59,392	22,313	38	27.3
2005	290	60,203	24,244	36	29.7
2006	313	64,427	25,326	36	32.1
2007	278	61,149	23,639	37	28.4
2008	273	59,842	22,661	36	28.5
2009	306	71,850	26,251	38	32.3
2010	371	81,077	29,804	36	39.4
2011	336	82,311	29,306	38	36.4
2012	362	87,594	29,781	37	39.7
2013	387	84,325	29,253	36	42.6
2014	385	83,873	29,354	37	42.9
2015	344	78,192	27,482	37	38.9
2016	315	67,810	25,074	37	36.2
2017	289	67,873	25,032	38	33.2
2018	302	68,153	24,928	37	34.8
2019	240	64,613	23,117	39	28.2
2020	236	59,792	21,143	38	27.4

County: county value. Kansas: state value. County Rank: highest county value ranked #1. (\$000): thousands of dollars. Nonmetro Kansas: Kansas total less Metropolitan Areas as defined by the Office of Management and Budget (OMB; released 3/6/2020). Per 1000: For nonmoney amounts, Per 1000=(county value / county population for the same year as the data) x 1000. \$ Per capita=(county value / county population for the same year as the data). Value= . indicates missing or suppressed data or value not calculated.



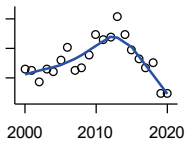
**Social Environment**



EST. % OF RELATED CHILDREN AGE 5 TO 17 IN FAMILIES IN POVERTY

U.S. Census Bureau, Small Area Income and Poverty Estimates

Year	County	State of Kansas	Non Metro Kansas	County Rank	Per 1000 or \$ Per Capita
2000	14.8	10.0	.	19	.
2001	15.1	10.8	.	29	.
2002	13.9	10.5	.	28	.
2003	15.3	11.3	.	17	.
2004	16.1	12.5	.	18	.
2005	17.7	12.8	.	17	.
2006	19.2	13.2	.	12	.
2007	17.5	12.6	.	15	.
2008	17.9	12.3	.	16	.
2009	19.7	14.7	.	16	.
2010	22.8	15.9	.	13	.
2011	21.2	16.2	.	16	.
2012	22.9	17.2	.	14	.
2013	23.9	16.5	.	11	.
2014	24.2	16.4	.	9	.
2015	22.0	15.3	.	14	.
2016	21.4	13.2	.	8	.
2017	19.1	13.4	.	23	.
2018	20.2	13.5	.	15	.
2019	16.4	12.9	.	37	.
2020	17.1	11.9	.	20	.



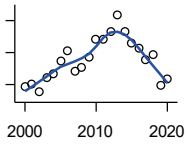
ESTIMATED NUMBER UNDER 18 IN POVERTY

U.S. Census Bureau, Small Area Income and Poverty Estimates

Year	County	State of Kansas	Non Metro Kansas	County Rank	Per 1000 or \$ Per Capita
2000	432	82,619	34,843	36	41.8
2001	425	87,487	36,724	36	41.6
2002	387	84,181	32,870	37	38.3
2003	429	93,896	36,004	37	42.6
2004	423	98,641	36,272	38	43.2
2005	459	100,254	39,118	37	47.0
2006	505	105,193	41,054	36	51.8
2007	426	100,242	37,881	37	43.5
2008	433	100,146	37,552	38	45.1
2009	477	118,187	42,682	38	50.3
2010	548	129,009	46,428	38	58.2
2011	529	133,478	46,832	38	57.3
2012	539	135,261	46,294	37	59.1
2013	608	131,251	44,952	36	66.9
2014	548	125,562	43,933	37	61.1
2015	497	119,994	41,828	37	56.2
2016	464	100,996	37,387	38	53.3
2017	433	102,858	37,955	38	49.7
2018	452	102,616	36,991	37	52.2
2019	348	97,920	34,797	40	40.8
2020	349	88,491	30,767	38	40.5

County: county value. Kansas: state value. County Rank: highest county value ranked #1. (\$000): thousands of dollars. Nonmetro Kansas: Kansas total less Metropolitan Areas as defined by the Office of Management and Budget (OMB; released 3/6/2020). Per 1000: For nonmoney amounts, Per 1000=(county value / county population for the same year as the data) x 1000. \$ Per capita=(county value / county population for the same year as the data). Value= . indicates missing or suppressed data or value not calculated.

**Social Environment**



**ESTIMATED PERCENT UNDER 18 IN POVERTY**

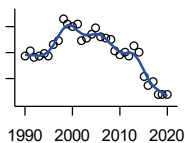
U.S. Census Bureau, Small Area Income and Poverty Estimates

Year	County	State of Kansas	Non Metro Kansas	County Rank	Per 1000 or \$ Per Capita
2000	17.2	11.9	.	19	.
2001	17.6	12.7	.	29	.
2002	16.3	12.1	.	17	.
2003	18.6	13.8	.	16	.
2004	19.2	14.6	.	14	.
2005	21.2	15.2	.	16	.
2006	22.8	15.4	.	11	.
2007	19.6	14.7	.	19	.
2008	20.2	14.6	.	19	.
2009	21.8	17.1	.	18	.
2010	24.5	18.1	.	16	.
2011	24.5	18.8	.	17	.
2012	25.8	19.0	.	12	.
2013	28.4	18.4	.	6	.
2014	25.8	17.6	.	9	.
2015	24.0	16.9	.	14	.
2016	23.1	14.3	.	9	.
2017	21.3	14.7	.	19	.
2018	22.2	14.8	.	12	.
2019	17.4	14.3	.	37	.
2020	18.3	13.0	.	19	.

County: county value. Kansas: state value. County Rank: highest county value ranked #1. (\$000): thousands of dollars. Nonmetro Kansas: Kansas total less Metropolitan Areas as defined by the Office of Management and Budget (OMB; released 3/6/2020). Per 1000: For nonmoney amounts, Per 1000=(county value / county population for the same year as the data) x 1000. \$ Per capita=(county value / county population for the same year as the data). Value= . indicates missing or suppressed data or value not calculated.

**Business**

**ESTABLISHMENTS TOTAL COUNTY BUSINESS PATTERNS**



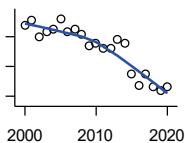
U.S. Census Bureau, County Business Patterns. Beginning with the 2017 data, any tabulation with fewer than 3 establishments were omitted from the release. Data for these establishments are included in the broader total.

Year	County	State of Kansas	Non Metro Kansas	County Rank	Per 1000 or \$ Per Capita
1990	237	65,858	26,802	49	23.0
1991	241	65,941	26,750	50	23.9
1992	236	67,630	27,229	52	23.3
1993	237	68,930	27,655	54	23.1
1994	239	69,822	27,763	54	23.2
1995	237	70,894	28,111	53	22.8
1996	246	72,017	28,353	52	23.6
1997	249	73,924	28,884	52	23.9
1998	266	74,019	28,749	50	25.6
1999	262	74,486	28,536	49	25.2
2000	260	74,939	28,475	50	25.2
2001	262	74,565	28,282	49	25.6
2002	249	75,077	28,183	50	24.6
2003	251	74,972	27,998	50	24.9
2004	254	75,827	28,009	49	26.0
2005	259	76,173	27,830	48	26.5
2006	252	76,446	27,653	49	25.9
2007	251	77,157	27,736	50	25.7
2008	250	76,096	27,314	50	26.1
2009	241	74,698	26,839	49	25.4
2010	238	74,301	26,739	50	25.3
2011	240	73,598	26,555	50	26.0
2012	237	73,944	26,534	51	26.0
2013	245	73,816	26,393	50	26.9
2014	240	74,055	26,292	51	26.8
2015	222	74,526	26,355	51	25.1
2016	215	74,884	26,172	53	24.7
2017	218	74,947	26,093	52	25.0
2018	208	74,559	25,802	54	24.0
2019	208	74,292	25,536	54	24.4
2020	208	73,982	25,178	54	24.1

County: county value. Kansas: state value. County Rank: highest county value ranked #1. (\$000): thousands of dollars. Nonmetro Kansas: Kansas total less Metropolitan Areas as defined by the Office of Management and Budget (OMB; released 3/6/2020). Per 1000: For nonmoney amounts, Per 1000=(county value / county population for the same year as the data) x 1000. \$ Per capita=(county value / county population for the same year as the data). Value= . indicates missing or suppressed data or value not calculated.

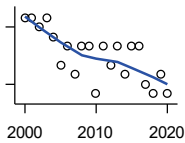
**Business**

**ESTABLISHMENTS: 1-19  
EMPLOYEES**



U.S. Census Bureau, County Business Patterns. Beginning with the 2017 data, any tabulation with fewer than 3 establishments were omitted from the release. Data for these establishments are included in the broader total.

Year	County	State of Kansas	Non Metro Kansas	County Rank	Per 1000 or \$ Per Capita
2000	228	64,527	25,381	50	22.1
2001	231	64,176	25,248	50	22.6
2002	220	64,886	25,208	52	21.8
2003	223	64,714	25,020	50	22.2
2004	225	65,554	24,995	49	23.0
2005	232	65,796	24,839	49	23.7
2006	223	65,764	24,589	50	22.9
2007	225	66,446	24,701	50	23.0
2008	222	65,322	24,257	50	23.1
2009	214	64,128	23,851	50	22.6
2010	216	64,015	23,857	50	23.0
2011	212	63,251	23,571	51	22.9
2012	212	63,519	23,575	51	23.2
2013	218	63,197	23,396	50	24.0
2014	216	63,113	23,229	51	24.1
2015	195	63,280	23,227	54	22.0
2016	187	63,630	23,117	60	21.5
2017	195	63,619	23,022	54	22.4
2018	186	63,233	22,745	57	21.5
2019	184	62,904	22,489	55	21.6
2020	186	62,634	22,173	54	21.6



**ESTABLISHMENTS: 20-99  
EMPLOYEES**

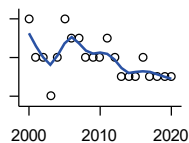
U.S. Census Bureau, County Business Patterns. Beginning with the 2017 data, any tabulation with fewer than 3 establishments were omitted from the release. Data for these establishments are included in the broader total.

Year	County	State of Kansas	Non Metro Kansas	County Rank	Per 1000 or \$ Per Capita
2000	25	8,714	2,653	45	2.4
2001	25	8,692	2,593	43	2.4
2002	24	8,582	2,554	43	2.4
2003	25	8,642	2,568	41	2.5
2004	23	8,658	2,590	46	2.4
2005	20	8,685	2,553	47	2.0
2006	22	8,922	2,612	46	2.3
2007	19	8,938	2,574	51	1.9
2008	22	8,939	2,587	44	2.3
2009	22	8,848	2,551	44	2.3
2010	17	8,612	2,454	50	1.8
2011	22	8,668	2,540	45	2.4
2012	20	8,700	2,500	46	2.2
2013	22	8,870	2,541	44	2.4
2014	19	9,121	2,590	45	2.1
2015	22	9,374	2,664	46	2.5
2016	22	9,412	2,596	43	2.5
2017	18	9,487	2,638	49	2.1
2018	17	9,485	2,621	51	2.0
2019	19	9,485	2,591	46	2.2
2020	17	9,471	2,545	51	2.0

County: county value. Kansas: state value. County Rank: highest county value ranked #1. (\$000): thousands of dollars. Nonmetro Kansas: Kansas total less Metropolitan Areas as defined by the Office of Management and Budget (OMB; released 3/6/2020). Per 1000: For nonmoney amounts, Per 1000=(county value / county population for the same year as the data) x 1000. \$ Per capita=(county value / county population for the same year as the data). Value= . indicates missing or suppressed data or value not calculated.

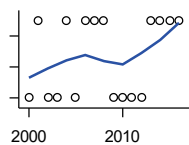
**Business**

**ESTABLISHMENTS: 100-499  
EMPLOYEES**



U.S. Census Bureau, County Business Patterns. Beginning with the 2017 data, any tabulation with fewer than 3 establishments were omitted from the release. Data for these establishments are included in the broader total.

Year	County	State of Kansas	Non Metro Kansas	County Rank	Per 1000 or \$ Per Capita
2000	6	1,555	409	35	0.6
2001	4	1,555	406	40	0.4
2002	4	1,464	386	39	0.4
2003	2	1,470	378	59	0.2
2004	4	1,463	388	39	0.4
2005	6	1,537	400	36	0.6
2006	5	1,598	407	37	0.5
2007	5	1,602	416	37	0.5
2008	4	1,653	421	42	0.4
2009	4	1,551	394	40	0.4
2010	4	1,513	382	38	0.4
2011	5	1,523	395	36	0.5
2012	4	1,567	410	41	0.4
2013	3	1,581	407	49	0.3
2014	3	1,641	421	52	0.3
2015	3	1,693	414	49	0.3
2016	4	1,671	406	44	0.5
2017	3	1,653	.	42	0.3
2018	3	1,650	.	45	0.3
2019	3	1,718	.	44	0.4
2020	3	1,692	.	43	0.3



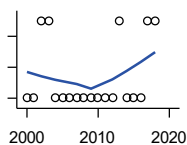
**ESTABLISHMENTS: 500 OR MORE  
EMPLOYEES**

U.S. Census Bureau, County Business Patterns. Beginning with the 2017 data, any tabulation with fewer than 3 establishments were omitted from the release. Data for these establishments are included in the broader total.

Year	County	State of Kansas	Non Metro Kansas	County Rank	Per 1000 or \$ Per Capita
2000	1	143	32	31	0.1
2001	2	142	35	17	0.2
2002	1	145	35	29	0.1
2003	1	146	32	29	0.1
2004	2	152	36	19	0.2
2005	1	155	38	31	0.1
2006	2	162	45	21	0.2
2007	2	171	45	19	0.2
2008	2	182	49	21	0.2
2009	1	171	43	33	0.1
2010	1	161	46	33	0.1
2011	1	156	49	33	0.1
2012	1	158	49	34	0.1
2013	2	168	49	19	0.2
2014	2	180	52	20	0.2
2015	2	179	50	20	0.2
2016	2	171	53	18	0.2

County: county value. Kansas: state value. County Rank: highest county value ranked #1. (\$000): thousands of dollars. Nonmetro Kansas: Kansas total less Metropolitan Areas as defined by the Office of Management and Budget (OMB; released 3/6/2020). Per 1000: For nonmoney amounts, Per 1000=(county value / county population for the same year as the data) x 1000. \$ Per capita=(county value / county population for the same year as the data). Value= . indicates missing or suppressed data or value not calculated.

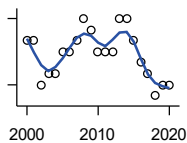
**Business**



**ESTABLISHMENTS: FORESTRY, FISHING, HUNTING, AND AG SUPPORT**

U.S. Census Bureau, County Business Patterns. Beginning with the 2017 data, any tabulation with fewer than 3 establishments were omitted from the release. Data for these establishments are included in the broader total.

Year	County	State of Kansas	Non Metro Kansas	County Rank	Per 1000 or \$ Per Capita
2000	2	190	149	43	0.2
2001	2	217	168	48	0.2
2002	3	224	176	30	0.3
2003	3	217	173	28	0.3
2004	2	211	165	53	0.2
2005	2	188	148	45	0.2
2006	2	193	158	48	0.2
2007	2	212	170	52	0.2
2008	2	197	158	50	0.2
2009	2	191	154	52	0.2
2010	2	192	161	50	0.2
2011	2	193	157	50	0.2
2012	2	204	164	50	0.2
2013	3	208	166	27	0.3
2014	2	194	152	55	0.2
2015	2	192	149	51	0.2
2016	2	181	142	48	0.2
2017	3	194	.	26	0.3
2018	3	195	.	26	0.3



**ESTABLISHMENTS: MINING**

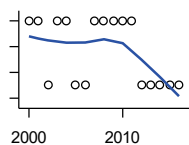
U.S. Census Bureau, County Business Patterns. Beginning with the 2017 data, any tabulation with fewer than 3 establishments were omitted from the release. Data for these establishments are included in the broader total.

Year	County	State of Kansas	Non Metro Kansas	County Rank	Per 1000 or \$ Per Capita
2000	10	868	619	29	1.0
2001	10	878	622	26	1.0
2002	6	847	615	36	0.6
2003	7	864	633	33	0.7
2004	7	880	647	34	0.7
2005	9	941	695	30	0.9
2006	9	991	734	30	0.9
2007	10	1,000	759	28	1.0
2008	12	1,047	799	27	1.3
2009	11	1,016	772	29	1.2
2010	9	1,009	762	32	1.0
2011	9	1,013	763	32	1.0
2012	9	1,048	789	30	1.0
2013	12	1,060	802	25	1.3
2014	12	1,102	828	26	1.3
2015	10	1,069	810	26	1.1
2016	8	990	747	31	0.9
2017	7	920	.	35	0.8
2018	5	900	.	43	0.6
2019	6	864	.	39	0.7
2020	6	825	.	38	0.7

County: county value. Kansas: state value. County Rank: highest county value ranked #1. (\$000): thousands of dollars. Nonmetro Kansas: Kansas total less Metropolitan Areas as defined by the Office of Management and Budget (OMB; released 3/6/2020). Per 1000: For nonmoney amounts, Per 1000=(county value / county population for the same year as the data) x 1000. \$ Per capita=(county value / county population for the same year as the data). Value= . indicates missing or suppressed data or value not calculated.

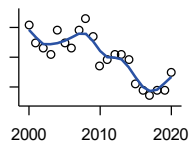
**Business**

**ESTABLISHMENTS: UTILITIES**



U.S. Census Bureau, County Business Patterns. Beginning with the 2017 data, any tabulation with fewer than 3 establishments were omitted from the release. Data for these establishments are included in the broader total.

Year	County	State of Kansas	Non Metro Kansas	County Rank	Per 1000 or \$ Per Capita
2000	2	274	192	68	0.2
2001	2	290	204	70	0.2
2002	1	278	195	93	0.1
2003	2	268	180	63	0.2
2004	2	247	164	59	0.2
2005	1	254	172	91	0.1
2006	1	248	169	92	0.1
2007	2	222	156	56	0.2
2008	2	244	166	61	0.2
2009	2	222	152	57	0.2
2010	2	197	129	49	0.2
2011	2	230	156	57	0.2
2012	1	232	156	86	0.1
2013	1	234	159	87	0.1
2014	1	232	160	89	0.1
2015	1	237	165	88	0.1
2016	1	245	171	90	0.1



**ESTABLISHMENTS: CONSTRUCTION**

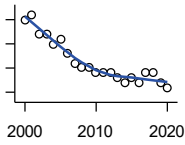
U.S. Census Bureau, County Business Patterns. Beginning with the 2017 data, any tabulation with fewer than 3 establishments were omitted from the release. Data for these establishments are included in the broader total.

Year	County	State of Kansas	Non Metro Kansas	County Rank	Per 1000 or \$ Per Capita
2000	28	7,703	2,616	49	2.7
2001	25	7,449	2,520	54	2.4
2002	24	7,519	2,482	56	2.4
2003	23	7,722	2,521	57	2.3
2004	27	7,887	2,518	49	2.8
2005	25	8,032	2,515	50	2.6
2006	24	8,031	2,494	53	2.5
2007	27	8,057	2,547	48	2.8
2008	29	7,831	2,522	47	3.0
2009	26	7,342	2,452	49	2.7
2010	21	7,064	2,394	57	2.2
2011	22	6,774	2,361	53	2.4
2012	23	6,741	2,393	52	2.5
2013	23	6,802	2,394	53	2.5
2014	22	6,920	2,383	54	2.5
2015	18	7,014	2,377	61	2.0
2016	17	6,988	2,343	64	2.0
2017	16	7,031	2,316	63	1.8
2018	17	7,124	2,285	61	2.0
2019	17	7,060	2,242	60	2.0
2020	20	7,089	2,249	54	2.3

County: county value. Kansas: state value. County Rank: highest county value ranked #1. (\$000): thousands of dollars. Nonmetro Kansas: Kansas total less Metropolitan Areas as defined by the Office of Management and Budget (OMB; released 3/6/2020). Per 1000: For nonmoney amounts, Per 1000=(county value / county population for the same year as the data) x 1000. \$ Per capita=(county value / county population for the same year as the data). Value= . indicates missing or suppressed data or value not calculated.

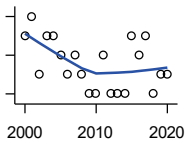
**Business**

**ESTABLISHMENTS:  
MANUFACTURING**



U.S. Census Bureau, County Business Patterns. Beginning with the 2017 data, any tabulation with fewer than 3 establishments were omitted from the release. Data for these establishments are included in the broader total.

Year	County	State of Kansas	Non Metro Kansas	County Rank	Per 1000 or \$ Per Capita
2000	30	3,229	1,316	23	2.9
2001	31	3,240	1,323	24	3.0
2002	27	3,181	1,289	29	2.7
2003	27	3,159	1,291	28	2.7
2004	25	3,179	1,313	31	2.6
2005	26	3,128	1,278	30	2.7
2006	23	3,165	1,290	33	2.4
2007	21	3,184	1,316	35	2.1
2008	20	3,171	1,297	34	2.1
2009	20	3,026	1,240	34	2.1
2010	19	2,955	1,222	35	2.0
2011	19	2,877	1,193	34	2.1
2012	19	2,889	1,197	34	2.1
2013	18	2,836	1,165	34	2.0
2014	17	2,831	1,168	35	1.9
2015	18	2,817	1,161	35	2.0
2016	17	2,791	1,150	35	2.0
2017	19	2,760	1,147	34	2.2
2018	19	2,725	1,126	35	2.2
2019	17	2,695	1,111	35	2.0
2020	16	2,673	1,103	37	1.9



**ESTABLISHMENTS: WHOLESALE  
TRADE**

U.S. Census Bureau, County Business Patterns. Beginning with the 2017 data, any tabulation with fewer than 3 establishments were omitted from the release. Data for these establishments are included in the broader total.

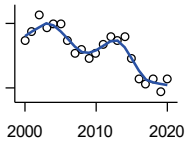
Year	County	State of Kansas	Non Metro Kansas	County Rank	Per 1000 or \$ Per Capita
2000	8	4,876	1,776	89	0.8
2001	9	4,811	1,769	84	0.9
2002	6	4,719	1,750	95	0.6
2003	8	4,590	1,637	87	0.8
2004	8	4,553	1,634	88	0.8
2005	7	4,541	1,618	90	0.7
2006	6	4,517	1,596	90	0.6
2007	7	4,555	1,629	92	0.7
2008	6	4,501	1,622	92	0.6
2009	5	4,437	1,614	97	0.5
2010	5	4,432	1,612	96	0.5
2011	7	4,400	1,660	93	0.8
2012	5	4,563	1,755	99	0.5
2013	5	4,501	1,741	99	0.5
2014	5	4,497	1,746	98	0.6
2015	8	4,459	1,755	89	0.9
2016	7	4,457	1,732	90	0.8
2017	8	4,436	1,774	87	0.9
2018	5	4,330	1,727	95	0.6
2019	6	4,291	1,713	92	0.7
2020	6	4,191	1,677	92	0.7

County: county value. Kansas: state value. County Rank: highest county value ranked #1. (\$000): thousands of dollars. Nonmetro Kansas: Kansas total less Metropolitan Areas as defined by the Office of Management and Budget (OMB; released 3/6/2020). Per 1000: For nonmoney amounts, Per 1000=(county value / county population for the same year as the data) x 1000. \$ Per capita=(county value / county population for the same year as the data). Value= . indicates missing or suppressed data or value not calculated.



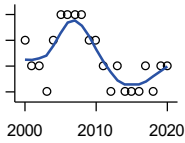
**Business**

**ESTABLISHMENTS: RETAIL TRADE**



U.S. Census Bureau, County Business Patterns. Beginning with the 2017 data, any tabulation with fewer than 3 establishments were omitted from the release. Data for these establishments are included in the broader total.

Year	County	State of Kansas	Non Metro Kansas	County Rank	Per 1000 or \$ Per Capita
2000	41	12,261	5,240	56	4.0
2001	43	12,206	5,207	54	4.2
2002	47	11,980	5,082	48	4.7
2003	44	11,834	5,049	47	4.4
2004	45	11,748	4,967	47	4.6
2005	45	11,562	4,834	47	4.6
2006	41	11,367	4,702	50	4.2
2007	38	11,306	4,653	53	3.9
2008	39	10,978	4,494	52	4.1
2009	37	10,760	4,372	53	3.9
2010	38	10,727	4,346	51	4.0
2011	40	10,655	4,289	49	4.3
2012	42	10,585	4,202	44	4.6
2013	41	10,433	4,147	44	4.5
2014	42	10,391	4,070	44	4.7
2015	37	10,327	4,061	49	4.2
2016	32	10,197	3,965	57	3.7
2017	31	10,074	3,885	58	3.6
2018	32	9,866	3,797	53	3.7
2019	29	9,762	3,750	57	3.4
2020	32	9,591	3,666	51	3.7



**ESTABLISHMENTS: TRANSPORTATION & WAREHOUSING**

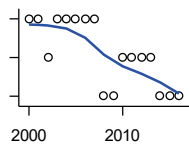
U.S. Census Bureau, County Business Patterns. Beginning with the 2017 data, any tabulation with fewer than 3 establishments were omitted from the release. Data for these establishments are included in the broader total.

Year	County	State of Kansas	Non Metro Kansas	County Rank	Per 1000 or \$ Per Capita
2000	8	2,474	1,293	78	0.8
2001	7	2,463	1,298	79	0.7
2002	7	2,461	1,278	78	0.7
2003	6	2,576	1,297	81	0.6
2004	8	2,651	1,324	70	0.8
2005	9	2,632	1,326	70	0.9
2006	9	2,626	1,295	69	0.9
2007	9	2,664	1,314	70	0.9
2008	9	2,675	1,329	70	0.9
2009	8	2,635	1,313	73	0.8
2010	8	2,615	1,313	72	0.9
2011	7	2,579	1,285	78	0.8
2012	6	2,519	1,243	84	0.7
2013	7	2,492	1,226	78	0.8
2014	6	2,518	1,240	84	0.7
2015	6	2,554	1,257	82	0.7
2016	6	2,567	1,241	78	0.7
2017	7	2,640	1,245	73	0.8
2018	6	2,627	1,238	78	0.7
2019	7	2,615	1,209	75	0.8
2020	7	2,589	1,179	72	0.8

County: county value. Kansas: state value. County Rank: highest county value ranked #1. (\$000): thousands of dollars. Nonmetro Kansas: Kansas total less Metropolitan Areas as defined by the Office of Management and Budget (OMB; released 3/6/2020). Per 1000: For nonmoney amounts, Per 1000=(county value / county population for the same year as the data) x 1000. \$ Per capita=(county value / county population for the same year as the data). Value= . indicates missing or suppressed data or value not calculated.

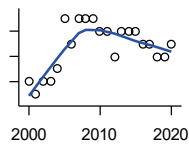
**Business**

**ESTABLISHMENTS: INFORMATION**



U.S. Census Bureau, County Business Patterns. Beginning with the 2017 data, any tabulation with fewer than 3 establishments were omitted from the release. Data for these establishments are included in the broader total.

Year	County	State of Kansas	Non Metro Kansas	County Rank	Per 1000 or \$ Per Capita
2000	4	1,542	578	75	0.4
2001	4	1,556	566	73	0.4
2002	3	1,517	551	80	0.3
2003	4	1,516	564	67	0.4
2004	4	1,518	556	65	0.4
2005	4	1,519	536	64	0.4
2006	4	1,549	559	68	0.4
2007	4	1,504	527	63	0.4
2008	2	1,468	522	87	0.2
2009	2	1,420	510	87	0.2
2010	3	1,437	527	75	0.3
2011	3	1,428	537	74	0.3
2012	3	1,387	515	71	0.3
2013	3	1,337	487	69	0.3
2014	2	1,335	496	85	0.2
2015	2	1,359	510	85	0.2
2016	2	1,431	537	85	0.2



**ESTABLISHMENTS: FINANCE & INSURANCE**

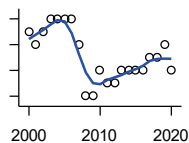
U.S. Census Bureau, County Business Patterns. Beginning with the 2017 data, any tabulation with fewer than 3 establishments were omitted from the release. Data for these establishments are included in the broader total.

Year	County	State of Kansas	Non Metro Kansas	County Rank	Per 1000 or \$ Per Capita
2000	12	5,209	1,848	70	1.2
2001	11	5,178	1,828	75	1.1
2002	12	5,496	1,911	74	1.2
2003	12	5,569	1,907	74	1.2
2004	13	5,572	1,913	69	1.3
2005	17	5,708	1,964	51	1.7
2006	15	5,877	1,976	63	1.5
2007	17	6,017	2,030	52	1.7
2008	17	6,010	2,023	51	1.8
2009	17	5,933	1,994	53	1.8
2010	16	5,872	1,975	52	1.7
2011	16	5,854	1,985	53	1.7
2012	14	5,993	2,024	64	1.5
2013	16	5,903	1,993	54	1.8
2014	16	5,894	2,000	55	1.8
2015	16	5,932	1,998	55	1.8
2016	15	6,022	2,021	62	1.7
2017	15	6,026	2,007	62	1.7
2018	14	6,023	1,997	62	1.6
2019	14	5,953	1,977	62	1.6
2020	15	5,926	1,969	58	1.7

County: county value. Kansas: state value. County Rank: highest county value ranked #1. (\$000): thousands of dollars. Nonmetro Kansas: Kansas total less Metropolitan Areas as defined by the Office of Management and Budget (OMB; released 3/6/2020). Per 1000: For nonmoney amounts, Per 1000=(county value / county population for the same year as the data) x 1000. \$ Per capita=(county value / county population for the same year as the data). Value= . indicates missing or suppressed data or value not calculated.

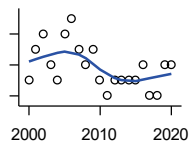
**Business**

**ESTABLISHMENTS: REAL ESTATE, RENTAL, AND LEASING**



U.S. Census Bureau, County Business Patterns. Beginning with the 2017 data, any tabulation with fewer than 3 establishments were omitted from the release. Data for these establishments are included in the broader total.

Year	County	State of Kansas	Non Metro Kansas	County Rank	Per 1000 or \$ Per Capita
2000	7	2,733	687	42	0.7
2001	6	2,849	724	46	0.6
2002	7	2,952	735	41	0.7
2003	8	3,007	727	40	0.8
2004	8	3,108	713	40	0.8
2005	8	3,203	727	40	0.8
2006	8	3,268	736	38	0.8
2007	6	3,286	721	45	0.6
2008	2	3,239	738	73	0.2
2009	2	3,122	723	70	0.2
2010	4	3,050	708	51	0.4
2011	3	3,002	692	58	0.3
2012	3	2,981	691	63	0.3
2013	4	3,046	717	54	0.4
2014	4	3,135	738	56	0.4
2015	4	3,179	744	57	0.5
2016	4	3,293	757	56	0.5
2017	5	3,389	.	50	0.6
2018	5	3,409	.	49	0.6
2019	6	3,464	.	44	0.7
2020	4	3,500	.	59	0.5



**ESTABLISHMENTS: PROFESSIONAL, SCIENTIFIC, AND TECHNICAL SERVICES**

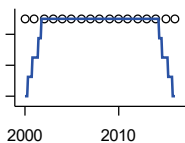
U.S. Census Bureau, County Business Patterns. Beginning with the 2017 data, any tabulation with fewer than 3 establishments were omitted from the release. Data for these establishments are included in the broader total.

Year	County	State of Kansas	Non Metro Kansas	County Rank	Per 1000 or \$ Per Capita
2000	12	6,424	1,690	63	1.2
2001	14	6,492	1,665	55	1.4
2002	15	6,719	1,704	55	1.5
2003	13	6,793	1,735	62	1.3
2004	12	7,025	1,730	62	1.2
2005	15	7,087	1,711	55	1.5
2006	16	7,231	1,736	49	1.6
2007	14	7,329	1,729	58	1.4
2008	13	7,133	1,671	59	1.4
2009	14	7,122	1,676	57	1.5
2010	12	7,172	1,680	62	1.3
2011	11	7,115	1,668	63	1.2
2012	12	7,122	1,681	62	1.3
2013	12	7,129	1,698	63	1.3
2014	12	7,206	1,682	63	1.3
2015	12	7,184	1,687	61	1.4
2016	13	7,146	1,659	56	1.5
2017	11	7,224	1,679	63	1.3
2018	11	7,138	1,655	64	1.3
2019	13	7,119	.	56	1.5
2020	13	7,117	.	57	1.5

County: county value. Kansas: state value. County Rank: highest county value ranked #1. (\$000): thousands of dollars. Nonmetro Kansas: Kansas total less Metropolitan Areas as defined by the Office of Management and Budget (OMB; released 3/6/2020). Per 1000: For nonmoney amounts, Per 1000=(county value / county population for the same year as the data) x 1000. \$ Per capita=(county value / county population for the same year as the data). Value= . indicates missing or suppressed data or value not calculated.

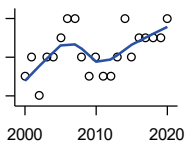
**Business**

**ESTABLISHMENTS: MANAGEMENT OF COMPANIES AND ENTERPRISES**



U.S. Census Bureau, County Business Patterns. Beginning with the 2017 data, any tabulation with fewer than 3 establishments were omitted from the release. Data for these establishments are included in the broader total.

Year	County	State of Kansas	Non Metro Kansas	County Rank	Per 1000 or \$ Per Capita
2000	1	622	145	68	0.1
2001	1	593	141	62	0.1
2002	1	597	152	63	0.1
2003	1	561	135	59	0.1
2004	1	569	133	57	0.1
2005	1	543	127	56	0.1
2006	1	542	131	57	0.1
2007	1	550	133	60	0.1
2008	1	553	139	60	0.1
2009	1	575	136	61	0.1
2010	1	567	131	61	0.1
2011	1	552	134	60	0.1
2012	1	593	135	56	0.1
2013	1	590	135	57	0.1
2014	1	603	136	57	0.1
2015	1	613	140	61	0.1
2016	1	655	171	60	0.1



**ESTABLISHMENTS: ADMIN, SUPPORT, WASTE MGMT., AND REMEDIATION**

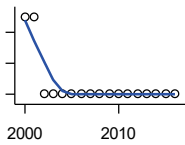
U.S. Census Bureau, County Business Patterns. Beginning with the 2017 data, any tabulation with fewer than 3 establishments were omitted from the release. Data for these establishments are included in the broader total.

Year	County	State of Kansas	Non Metro Kansas	County Rank	Per 1000 or \$ Per Capita
2000	5	3,307	871	65	0.5
2001	6	3,421	913	57	0.6
2002	4	3,232	882	74	0.4
2003	6	3,189	858	54	0.6
2004	6	3,301	891	53	0.6
2005	7	3,342	896	51	0.7
2006	8	3,395	886	41	0.8
2007	8	3,522	921	45	0.8
2008	6	3,587	932	57	0.6
2009	5	3,505	904	67	0.5
2010	6	3,494	897	59	0.6
2011	5	3,447	903	69	0.5
2012	5	3,462	891	65	0.5
2013	6	3,489	904	55	0.7
2014	8	3,569	933	44	0.9
2015	6	3,630	964	58	0.7
2016	7	3,705	987	51	0.8
2017	7	3,741	991	53	0.8
2018	7	3,740	983	52	0.8
2019	7	3,762	991	52	0.8
2020	8	3,807	989	49	0.9

County: county value. Kansas: state value. County Rank: highest county value ranked #1. (\$000): thousands of dollars. Nonmetro Kansas: Kansas total less Metropolitan Areas as defined by the Office of Management and Budget (OMB; released 3/6/2020). Per 1000: For nonmoney amounts, Per 1000=(county value / county population for the same year as the data) x 1000. \$ Per capita=(county value / county population for the same year as the data). Value= . indicates missing or suppressed data or value not calculated.

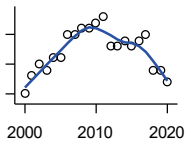
**Business**

**ESTABLISHMENTS: EDUCATIONAL SERVICES**



U.S. Census Bureau, County Business Patterns. Beginning with the 2017 data, any tabulation with fewer than 3 establishments were omitted from the release. Data for these establishments are included in the broader total.

Year	County	State of Kansas	Non Metro Kansas	County Rank	Per 1000 or \$ Per Capita
2000	3	604	155	37	0.3
2001	3	625	168	37	0.3
2002	2	666	165	46	0.2
2003	2	663	173	44	0.2
2004	2	690	173	44	0.2
2005	2	699	168	41	0.2
2006	2	698	175	46	0.2
2007	2	691	165	44	0.2
2008	2	692	158	44	0.2
2009	2	690	150	43	0.2
2010	2	700	149	44	0.2
2011	2	711	150	43	0.2
2012	2	724	145	44	0.2
2013	2	735	153	43	0.2
2014	2	722	152	45	0.2
2015	2	754	152	45	0.2
2016	2	728	150	40	0.2



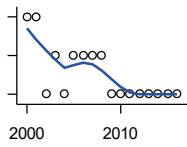
**ESTABLISHMENTS: HEALTH CARE AND SOCIAL ASSISTANCE**

U.S. Census Bureau, County Business Patterns. Beginning with the 2017 data, any tabulation with fewer than 3 establishments were omitted from the release. Data for these establishments are included in the broader total.

Year	County	State of Kansas	Non Metro Kansas	County Rank	Per 1000 or \$ Per Capita
2000	25	6,564	2,591	45	2.4
2001	28	6,636	2,590	41	2.7
2002	30	7,052	2,777	41	3.0
2003	29	7,129	2,792	43	2.9
2004	31	7,239	2,813	41	3.2
2005	31	7,412	2,855	43	3.2
2006	35	7,477	2,860	37	3.6
2007	35	7,661	2,864	40	3.6
2008	36	7,651	2,810	40	3.8
2009	36	7,696	2,787	39	3.8
2010	37	7,751	2,830	38	3.9
2011	38	7,804	2,817	37	4.1
2012	33	7,973	2,793	41	3.6
2013	33	7,877	2,729	39	3.6
2014	34	7,809	2,686	38	3.8
2015	33	8,103	2,692	38	3.7
2016	34	8,315	2,678	38	3.9
2017	35	8,136	2,646	36	4.0
2018	29	8,126	2,632	42	3.3
2019	29	8,184	2,587	41	3.4
2020	27	8,290	2,571	42	3.1

County: county value. Kansas: state value. County Rank: highest county value ranked #1. (\$000): thousands of dollars. Nonmetro Kansas: Kansas total less Metropolitan Areas as defined by the Office of Management and Budget (OMB; released 3/6/2020). Per 1000: For nonmoney amounts, Per 1000=(county value / county population for the same year as the data) x 1000. \$ Per capita=(county value / county population for the same year as the data). Value= . indicates missing or suppressed data or value not calculated.

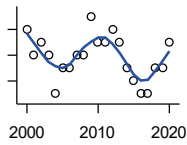
**Business**



**ESTABLISHMENTS: ARTS, ENTERTAINMENT, AND RECREATION**

U.S. Census Bureau, County Business Patterns. Beginning with the 2017 data, any tabulation with fewer than 3 establishments were omitted from the release. Data for these establishments are included in the broader total.

Year	County	State of Kansas	Non Metro Kansas	County Rank	Per 1000 or \$ Per Capita
2000	4	981	419	53	0.4
2001	4	1,009	433	52	0.4
2002	2	1,054	441	89	0.2
2003	3	1,045	443	70	0.3
2004	2	1,082	445	85	0.2
2005	3	1,109	446	71	0.3
2006	3	1,080	445	72	0.3
2007	3	1,092	444	71	0.3
2008	3	1,062	423	68	0.3
2009	2	1,063	421	83	0.2
2010	2	1,018	406	87	0.2
2011	2	997	387	89	0.2
2012	2	1,000	388	86	0.2
2013	2	1,009	377	84	0.2
2014	2	1,030	365	83	0.2
2015	2	1,031	357	83	0.2
2016	2	1,060	366	82	0.2



**ESTABLISHMENTS: ACCOMMODATION AND FOOD SERVICES**

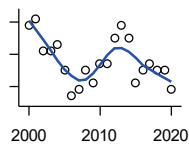
U.S. Census Bureau, County Business Patterns. Beginning with the 2017 data, any tabulation with fewer than 3 establishments were omitted from the release. Data for these establishments are included in the broader total.

Year	County	State of Kansas	Non Metro Kansas	County Rank	Per 1000 or \$ Per Capita
2000	20	5,536	2,213	53	1.9
2001	18	5,551	2,173	53	1.8
2002	19	5,610	2,174	50	1.9
2003	18	5,635	2,188	53	1.8
2004	15	5,681	2,160	59	1.5
2005	17	5,776	2,170	57	1.7
2006	17	5,745	2,132	55	1.7
2007	18	5,877	2,095	49	1.8
2008	18	5,843	2,052	50	1.9
2009	21	5,794	2,029	46	2.2
2010	19	5,898	2,046	46	2.0
2011	19	5,958	2,067	48	2.1
2012	20	5,951	2,046	47	2.2
2013	19	6,061	2,070	49	2.1
2014	17	5,985	2,024	50	1.9
2015	16	6,034	2,063	51	1.8
2016	15	6,126	2,094	60	1.7
2017	15	6,250	2,123	60	1.7
2018	17	6,256	2,128	52	2.0
2019	17	6,231	2,131	51	2.0
2020	19	6,206	2,131	47	2.2

County: county value. Kansas: state value. County Rank: highest county value ranked #1. (\$000): thousands of dollars. Nonmetro Kansas: Kansas total less Metropolitan Areas as defined by the Office of Management and Budget (OMB; released 3/6/2020). Per 1000: For nonmoney amounts, Per 1000=(county value / county population for the same year as the data) x 1000. \$ Per capita=(county value / county population for the same year as the data). Value= . indicates missing or suppressed data or value not calculated.

**Business**

**ESTABLISHMENTS: OTHER SERVICES**

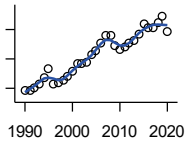


U.S. Census Bureau, County Business Patterns. Beginning with the 2017 data, any tabulation with fewer than 3 establishments were omitted from the release. Data for these establishments are included in the broader total.

Year	County	State of Kansas	Non Metro Kansas	County Rank	Per 1000 or \$ Per Capita
2000	37	8,423	3,636	45	3.6
2001	38	8,310	3,614	46	3.7
2002	33	8,552	3,658	50	3.3
2003	33	8,411	3,605	51	3.3
2004	34	8,343	3,597	50	3.5
2005	30	8,321	3,571	54	3.1
2006	26	8,225	3,490	59	2.7
2007	27	8,355	3,534	59	2.8
2008	30	8,104	3,406	54	3.1
2009	28	8,040	3,405	54	3.0
2010	31	7,998	3,379	53	3.3
2011	31	7,883	3,294	54	3.4
2012	35	7,913	3,303	47	3.8
2013	37	7,947	3,290	45	4.1
2014	35	7,943	3,285	47	3.9
2015	28	7,869	3,255	55	3.2
2016	30	7,839	3,204	51	3.4
2017	31	7,873	3,189	50	3.6
2018	30	7,853	3,176	50	3.5
2019	30	7,834	3,138	51	3.5
2020	27	7,787	3,073	56	3.1

County: county value. Kansas: state value. County Rank: highest county value ranked #1. (\$000): thousands of dollars. Nonmetro Kansas: Kansas total less Metropolitan Areas as defined by the Office of Management and Budget (OMB; released 3/6/2020). Per 1000: For nonmoney amounts, Per 1000=(county value / county population for the same year as the data) x 1000. \$ Per capita=(county value / county population for the same year as the data). Value= . indicates missing or suppressed data or value not calculated.

**Business**



**TOTAL ANNUAL PAYROLL (\$000)  
COUNTY BUSINESS PATTERNS**

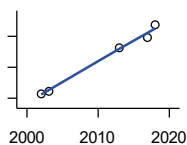
U.S. Census Bureau, County Business Patterns. Beginning with the 2017 data, any tabulation with fewer than 3 establishments were omitted from the release. Data for these establishments are included in the broader total.

Year	County	State of Kansas	Non Metro Kansas	County Rank	Per 1000 or \$ Per Capita
1990	46,530	17,487,316	4,442,429	34	4,522.3
1991	46,492	18,162,326	4,612,616	35	4,618.7
1992	51,536	19,244,346	4,882,060	36	5,083.4
1993	58,096	20,087,190	5,182,780	35	5,662.9
1994	67,440	21,201,652	5,541,423	35	6,538.7
1995	84,338	22,825,920	5,875,310	32	8,114.1
1996	57,753	24,613,884	6,198,398	37	5,543.6
1997	58,863	26,787,098	6,599,061	38	5,661.5
1998	64,512	28,747,576	6,871,794	38	6,215.0
1999	69,920	30,600,434	7,121,961	37	6,719.2
2000	78,707	31,990,762	7,520,424	36	7,617.8
2001	93,035	33,303,992	7,598,165	35	9,106.8
2002	92,313	33,152,962	7,572,002	35	9,136.3
2003	94,656	34,040,944	7,726,561	36	9,406.3
2004	106,834	35,725,812	8,303,779	34	10,919.3
2005	113,641	36,646,064	8,586,986	34	11,629.2
2006	127,125	39,251,388	9,178,947	32	13,042.5
2007	138,966	42,022,753	.	32	14,204.8
2008	140,829	43,984,689	.	33	14,681.9
2009	123,107	42,146,866	.	34	12,979.1
2010	116,109	42,686,303	10,294,015	36	12,340.2
2011	121,040	43,733,944	.	36	13,102.4
2012	127,810	45,608,072	11,222,183	36	14,014.3
2013	131,851	47,715,601	11,446,751	36	14,503.5
2014	142,162	49,712,832	11,957,931	34	15,848.6
2015	160,584	51,259,676	11,975,718	32	18,155.3
2016	152,868	51,016,318	12,148,646	34	17,575.1
2017	153,643	52,754,605	12,448,592	34	17,645.9
2018	161,135	55,087,460	12,810,270	33	18,593.9
2019	171,675	57,272,387	13,123,288	33	20,137.8
2020	146,895	58,374,388	14,007,955	37	17,033.3

County: county value. Kansas: state value. County Rank: highest county value ranked #1. (\$000): thousands of dollars. Nonmetro Kansas: Kansas total less Metropolitan Areas as defined by the Office of Management and Budget (OMB; released 3/6/2020). Per 1000: For nonmoney amounts, Per 1000=(county value / county population for the same year as the data) x 1000. \$ Per capita=(county value / county population for the same year as the data). Value= . indicates missing or suppressed data or value not calculated.



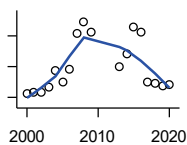
**Business**



**TOTAL ANNUAL PAYROLL(\$000): FORESTRY, FISHING, HUNTING, AND AG SUPPORT**

U.S. Census Bureau, County Business Patterns. Beginning with the 2017 data, any tabulation with fewer than 3 establishments were omitted from the release. Data for these establishments are included in the broader total.

Year	County	State of Kansas	Non Metro Kansas	County Rank	Per 1000 or \$ Per Capita
2000	.	13,551	.	.	.
2001	.	.	.	.	.
2002	32	16,528	.	.	3.2
2003	42	17,247	.	.	4.2
2004	.	17,552	.	.	.
2005	.	16,298	.	.	.
2006	.	17,908	.	.	.
2007	.	22,199	.	.	.
2008	.	21,359	.	.	.
2009	.	22,466	.	.	.
2010	.	22,753	.	.	.
2011	.	23,320	.	.	.
2012	.	27,492	.	.	.
2013	326	30,360	.	.	35.9
2014	.	34,862	.	.	.
2015	.	35,980	.	.	.
2017	393	34,117	.	.	45.1
2018	475	37,960	.	.	54.8



**TOTAL ANNUAL PAYROLL(\$000): MINING**

U.S. Census Bureau, County Business Patterns. Beginning with the 2017 data, any tabulation with fewer than 3 establishments were omitted from the release. Data for these establishments are included in the broader total.

Year	County	State of Kansas	Non Metro Kansas	County Rank	Per 1000 or \$ Per Capita
2000	710	240,079	.	.	68.7
2001	886	273,838	.	.	86.7
2002	853	262,277	.	.	84.4
2003	1,663	290,652	.	.	165.3
2004	4,314	326,997	.	.	440.9
2005	2,426	381,069	.	.	248.3
2006	4,627	482,102	.	.	474.7
2007	10,479	551,751	.	.	1,071.1
2008	12,281	620,446	.	.	1,280.3
2009	10,642	465,070	.	.	1,122.0
2010	.	485,841	.	.	.
2011	.	541,536	.	.	.
2012	.	600,402	.	.	.
2013	4,956	599,788	.	.	545.2
2014	7,131	678,673	.	.	795.0
2015	11,453	552,658	.	.	1,294.9
2016	10,525	428,767	.	.	1,210.0
2017	2,471	379,883	.	.	283.8
2018	2,300	431,367	.	.	265.4
2019	1,962	349,270	.	.	230.1
2020	2,044	302,795	.	.	237.0

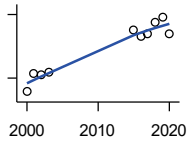
County: county value. Kansas: state value. County Rank: highest county value ranked #1. (\$000): thousands of dollars. Nonmetro Kansas: Kansas total less Metropolitan Areas as defined by the Office of Management and Budget (OMB; released 3/6/2020). Per 1000: For nonmoney amounts, Per 1000=(county value / county population for the same year as the data) x 1000. \$ Per capita=(county value / county population for the same year as the data). Value= . indicates missing or suppressed data or value not calculated.

**Business**

**TOTAL ANNUAL PAYROLL(\$000):  
UTILITIES**

U.S. Census Bureau, County Business Patterns. Beginning with the 2017 data, any tabulation with fewer than 3 establishments were omitted from the release. Data for these establishments are included in the broader total.

Year	County	State of Kansas	Non Metro Kansas	County Rank	Per 1000 or \$ Per Capita
2000	.	410,313	.	.	.
2001	.	452,057	.	.	.
2002	.	377,559	.	.	.
2003	.	378,157	.	.	.
2004	.	377,809	.	.	.
2005	.	429,864	.	.	.
2006	.	443,999	.	.	.
2007	.	480,068	.	.	.
2008	.	541,066	.	.	.
2009	.	563,373	.	.	.
2010	.	512,628	.	.	.
2011	.	653,229	.	.	.
2012	.	625,451	.	.	.
2013	.	625,347	.	.	.
2014	.	610,960	.	.	.
2015	.	668,559	.	.	.



**TOTAL ANNUAL PAYROLL(\$000):  
CONSTRUCTION**

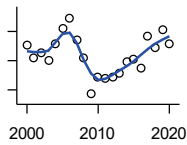
U.S. Census Bureau, County Business Patterns. Beginning with the 2017 data, any tabulation with fewer than 3 establishments were omitted from the release. Data for these establishments are included in the broader total.

Year	County	State of Kansas	Non Metro Kansas	County Rank	Per 1000 or \$ Per Capita
2000	6,992	2,256,057	.	.	676.7
2001	24,805	2,320,652	.	.	2,428.1
2002	23,439	2,302,229	.	.	2,319.8
2003	24,996	2,282,021	.	.	2,484.0
2004	.	2,302,854	.	.	.
2005	.	2,465,977	.	.	.
2006	.	2,700,351	.	.	.
2007	.	2,772,168	.	.	.
2008	.	2,950,073	.	.	.
2009	.	2,709,864	.	.	.
2010	.	2,553,555	.	.	.
2011	.	2,550,355	.	.	.
2012	.	2,733,284	.	.	.
2013	.	2,866,801	.	.	.
2014	.	3,135,814	.	.	.
2015	65,760	3,270,952	.	.	7,434.7
2016	59,750	3,328,610	.	.	6,869.4
2017	61,840	3,568,505	.	.	7,102.3
2018	72,722	3,806,196	.	.	8,391.6
2019	77,118	3,879,912	.	.	9,046.1
2020	61,306	3,983,029	.	.	7,108.8

County: county value. Kansas: state value. County Rank: highest county value ranked #1. (\$000): thousands of dollars. Nonmetro Kansas: Kansas total less Metropolitan Areas as defined by the Office of Management and Budget (OMB; released 3/6/2020). Per 1000: For nonmoney amounts, Per 1000=(county value / county population for the same year as the data) x 1000. \$ Per capita=(county value / county population for the same year as the data). Value= . indicates missing or suppressed data or value not calculated.

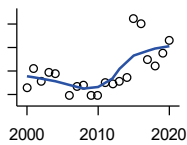
**Business**

**TOTAL ANNUAL PAYROLL(\$000):  
MANUFACTURING**



U.S. Census Bureau, County Business Patterns. Beginning with the 2017 data, any tabulation with fewer than 3 establishments were omitted from the release. Data for these establishments are included in the broader total.

Year	County	State of Kansas	Non Metro Kansas	County Rank	Per 1000 or \$ Per Capita
2000	45,529	7,015,414	.	.	4,406.6
2001	40,939	7,301,706	.	.	4,007.3
2002	42,513	6,802,605	.	.	4,207.5
2003	40,139	6,691,611	.	.	3,988.8
2004	45,881	6,985,656	.	.	4,689.4
2005	51,127	7,221,614	.	.	5,232.0
2006	54,532	7,621,873	.	.	5,594.7
2007	47,197	7,873,359	.	.	4,824.4
2008	40,996	8,441,541	.	.	4,274.0
2009	28,516	7,477,838	.	.	3,006.4
2010	34,323	7,556,955	.	.	3,647.9
2011	33,954	7,747,934	.	.	3,675.5
2012	34,404	7,704,851	.	.	3,772.4
2013	35,646	8,365,542	.	.	3,921.0
2014	39,440	8,787,306	.	.	4,396.9
2015	40,708	9,052,105	.	.	4,602.4
2016	37,550	8,868,744	.	.	4,317.1
2017	48,291	9,075,793	.	.	5,546.2
2018	44,391	9,481,652	.	.	5,122.4
2019	50,512	10,171,575	.	.	5,925.2
2020	45,816	9,744,825	.	.	5,312.6



**TOTAL ANNUAL PAYROLL(\$000):  
WHOLESALE TRADE**

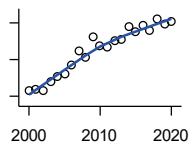
U.S. Census Bureau, County Business Patterns. Beginning with the 2017 data, any tabulation with fewer than 3 establishments were omitted from the release. Data for these establishments are included in the broader total.

Year	County	State of Kansas	Non Metro Kansas	County Rank	Per 1000 or \$ Per Capita
2000	658	2,332,755	.	.	63.7
2001	820	2,283,169	.	.	80.3
2002	713	2,107,653	.	.	70.6
2003	783	2,622,701	.	.	77.8
2004	772	2,663,196	.	.	78.9
2005	.	2,345,990	.	.	.
2006	597	2,592,211	.	.	61.2
2007	673	2,682,542	.	.	68.8
2008	680	3,078,655	.	.	70.9
2009	590	2,940,949	.	.	62.2
2010	588	3,097,628	.	.	62.5
2011	701	3,305,811	.	.	75.9
2012	687	3,339,997	.	.	75.3
2013	709	3,460,512	.	.	78.0
2014	742	3,712,075	.	.	82.7
2015	1,247	3,760,189	.	.	141.0
2016	1,208	3,738,207	.	.	138.9
2017	896	3,822,730	.	.	102.9
2018	838	3,814,353	.	.	96.7
2019	956	4,025,802	.	.	112.1
2020	1,059	4,224,666	.	.	122.8

County: county value. Kansas: state value. County Rank: highest county value ranked #1. (\$000): thousands of dollars. Nonmetro Kansas: Kansas total less Metropolitan Areas as defined by the Office of Management and Budget (OMB; released 3/6/2020). Per 1000: For nonmoney amounts, Per 1000=(county value / county population for the same year as the data) x 1000. \$ Per capita=(county value / county population for the same year as the data). Value= . indicates missing or suppressed data or value not calculated.

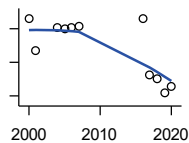
**Business**

**TOTAL ANNUAL PAYROLL(\$000):  
RETAIL TRADE**



U.S. Census Bureau, County Business Patterns. Beginning with the 2017 data, any tabulation with fewer than 3 establishments were omitted from the release. Data for these establishments are included in the broader total.

Year	County	State of Kansas	Non Metro Kansas	County Rank	Per 1000 or \$ Per Capita
2000	3,170	2,747,001	.	.	306.8
2001	3,184	2,813,226	.	.	311.7
2002	3,154	2,854,231	.	.	312.2
2003	3,407	2,773,674	.	.	338.6
2004	3,553	2,847,826	.	.	363.1
2005	3,620	2,952,196	.	.	370.4
2006	3,857	3,126,495	.	.	395.7
2007	4,219	3,201,169	.	.	431.3
2008	4,044	3,261,054	.	.	421.6
2009	4,632	3,232,246	.	.	488.4
2010	4,364	3,321,838	.	.	463.8
2011	4,332	3,384,607	.	.	468.9
2012	4,508	3,409,755	.	.	494.3
2013	4,564	3,483,752	.	.	502.0
2014	4,899	3,617,933	.	.	546.2
2015	4,757	3,712,165	.	.	537.8
2016	4,948	3,826,889	.	.	568.9
2017	4,803	3,797,849	.	.	551.6
2018	5,091	3,818,988	.	.	587.5
2019	4,954	3,908,994	.	.	581.1
2020	5,053	3,984,443	.	.	585.9



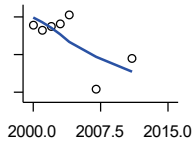
**TOTAL ANNUAL PAYROLL(\$000):  
TRANSPORTATION &  
WAREHOUSING**

U.S. Census Bureau, County Business Patterns. Beginning with the 2017 data, any tabulation with fewer than 3 establishments were omitted from the release. Data for these establishments are included in the broader total.

Year	County	State of Kansas	Non Metro Kansas	County Rank	Per 1000 or \$ Per Capita
2000	3,804	1,044,835	.	.	368.2
2001	2,852	1,089,405	.	.	279.2
2002	.	1,094,636	.	.	.
2003	.	1,316,655	.	.	.
2004	3,551	1,439,800	.	.	362.9
2005	3,501	1,393,651	.	.	358.3
2006	3,543	1,528,551	.	.	363.5
2007	3,581	1,788,267	.	.	366.0
2008	.	1,722,697	.	.	.
2009	.	1,618,598	.	.	.
2010	.	1,735,761	.	.	.
2011	.	1,739,165	.	.	.
2012	.	1,984,976	.	.	.
2013	.	2,006,261	.	.	.
2014	.	2,097,377	.	.	.
2015	.	2,190,072	.	.	.
2016	3,788	2,202,859	.	.	435.5
2017	2,117	2,546,061	.	.	243.1
2018	2,025	2,663,188	.	.	233.7
2019	1,609	2,879,406	.	.	188.7
2020	1,778	2,962,461	.	.	206.2

County: county value. Kansas: state value. County Rank: highest county value ranked #1. (\$000): thousands of dollars. Nonmetro Kansas: Kansas total less Metropolitan Areas as defined by the Office of Management and Budget (OMB; released 3/6/2020). Per 1000: For nonmoney amounts, Per 1000=(county value / county population for the same year as the data) x 1000. \$ Per capita=(county value / county population for the same year as the data). Value= . indicates missing or suppressed data or value not calculated.

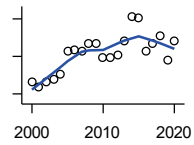
**Business**



**TOTAL ANNUAL PAYROLL(\$000):  
INFORMATION**

U.S. Census Bureau, County Business Patterns. Beginning with the 2017 data, any tabulation with fewer than 3 establishments were omitted from the release. Data for these establishments are included in the broader total.

Year	County	State of Kansas	Non Metro Kansas	County Rank	Per 1000 or \$ Per Capita
2000	554	1,923,381	.	.	53.6
2001	530	2,218,610	.	.	51.9
2002	548	2,298,108	.	.	54.2
2003	563	2,378,673	.	.	55.9
2004	611	2,392,990	.	.	62.4
2005	.	2,395,081	.	.	.
2006	.	2,586,483	.	.	.
2007	217	2,594,138	.	.	22.2
2008	.	3,043,244	.	.	.
2009	.	3,045,570	.	.	.
2010	.	2,481,580	.	.	.
2011	379	2,513,805	.	.	41.0
2012	.	2,535,555	.	.	.
2013	.	2,805,017	.	.	.
2014	.	2,393,609	.	.	.
2015	.	2,406,323	.	.	.



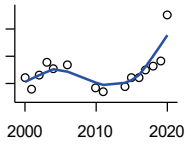
**TOTAL ANNUAL PAYROLL(\$000):  
FINANCE & INSURANCE**

U.S. Census Bureau, County Business Patterns. Beginning with the 2017 data, any tabulation with fewer than 3 establishments were omitted from the release. Data for these establishments are included in the broader total.

Year	County	State of Kansas	Non Metro Kansas	County Rank	Per 1000 or \$ Per Capita
2000	2,325	2,083,565	.	.	225.0
2001	2,192	2,129,587	.	.	214.6
2002	2,333	2,414,120	.	.	230.9
2003	2,386	2,608,579	.	.	237.1
2004	2,526	2,676,910	.	.	258.2
2005	3,150	2,786,136	.	.	322.3
2006	3,186	2,928,931	.	.	326.9
2007	3,125	3,096,017	.	.	319.4
2008	3,335	3,322,977	.	.	347.7
2009	3,335	3,206,839	.	.	351.6
2010	2,966	3,211,300	.	.	315.2
2011	2,983	3,404,633	.	.	322.9
2012	3,046	3,611,165	.	.	334.0
2013	3,413	3,896,051	.	.	375.4
2014	4,063	4,044,315	.	.	453.0
2015	4,022	4,113,060	.	.	454.7
2016	3,140	4,180,740	.	.	361.0
2017	3,356	4,258,057	.	.	385.4
2018	3,536	4,682,552	.	.	408.0
2019	2,907	4,814,201	.	.	341.0
2020	3,405	5,288,529	.	.	394.8

County: county value. Kansas: state value. County Rank: highest county value ranked #1. (\$000): thousands of dollars. Nonmetro Kansas: Kansas total less Metropolitan Areas as defined by the Office of Management and Budget (OMB; released 3/6/2020). Per 1000: For nonmoney amounts, Per 1000=(county value / county population for the same year as the data) x 1000. \$ Per capita=(county value / county population for the same year as the data). Value= . indicates missing or suppressed data or value not calculated.

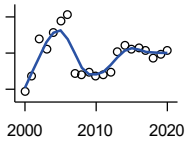
**Business**



**TOTAL ANNUAL PAYROLL(\$000):  
REAL ESTATE, RENTAL, AND  
LEASING**

U.S. Census Bureau, County Business Patterns. Beginning with the 2017 data, any tabulation with fewer than 3 establishments were omitted from the release. Data for these establishments are included in the broader total.

Year	County	State of Kansas	Non Metro Kansas	County Rank	Per 1000 or \$ Per Capita
2000	60	360,637	.	.	5.8
2001	40	397,371	.	.	3.9
2002	65	403,695	.	.	6.4
2003	88	437,786	.	.	8.7
2004	78	430,719	.	.	8.0
2005	.	465,149	.	.	.
2006	85	478,811	.	.	8.7
2007	.	452,969	.	.	.
2008	.	484,149	.	.	.
2009	.	450,884	.	.	.
2010	42	487,255	.	.	4.5
2011	34	535,120	.	.	3.7
2012	.	531,039	.	.	.
2013	.	538,796	.	.	.
2014	44	542,307	.	.	4.9
2015	61	595,030	.	.	6.9
2016	61	607,668	.	.	7.0
2017	74	590,373	.	.	8.5
2018	82	600,037	.	.	9.5
2019	92	622,881	.	.	10.8
2020	176	670,656	.	.	20.4



**TOTAL ANNUAL PAYROLL(\$000):  
PROFESSIONAL, SCIENTIFIC, AND  
TECHNICAL SERVICES**

U.S. Census Bureau, County Business Patterns. Beginning with the 2017 data, any tabulation with fewer than 3 establishments were omitted from the release. Data for these establishments are included in the broader total.

Year	County	State of Kansas	Non Metro Kansas	County Rank	Per 1000 or \$ Per Capita
2000	427	2,057,313	.	.	41.3
2001	866	2,152,937	.	.	84.8
2002	1,878	2,150,085	.	.	185.9
2003	1,616	2,052,712	.	.	160.6
2004	2,060	2,531,457	.	.	210.5
2005	2,385	2,418,500	.	.	244.1
2006	2,566	2,655,690	.	.	263.3
2007	934	2,901,544	.	.	95.5
2008	914	2,903,802	.	.	95.3
2009	957	3,071,611	.	.	100.9
2010	870	3,037,182	.	.	92.5
2011	888	3,132,082	.	.	96.1
2012	974	3,455,548	.	.	106.8
2013	1,548	3,777,729	.	.	170.3
2014	1,719	3,981,580	.	.	191.6
2015	1,603	4,039,074	.	.	181.2
2016	1,651	4,125,507	.	.	189.8
2017	1,564	4,158,858	.	.	179.6
2018	1,369	4,314,317	.	.	158.0
2019	1,483	4,646,644	.	.	174.0
2020	1,582	4,927,611	.	.	183.4

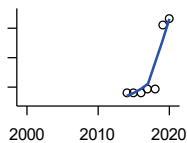
County: county value. Kansas: state value. County Rank: highest county value ranked #1. (\$000): thousands of dollars. Nonmetro Kansas: Kansas total less Metropolitan Areas as defined by the Office of Management and Budget (OMB; released 3/6/2020). Per 1000: For nonmoney amounts, Per 1000=(county value / county population for the same year as the data) x 1000. \$ Per capita=(county value / county population for the same year as the data). Value= . indicates missing or suppressed data or value not calculated.

**Business**

**TOTAL ANNUAL PAYROLL(\$000):  
MANAGEMENT OF COMPANIES AND  
ENTERPRISES**

U.S. Census Bureau, County Business Patterns. Beginning with the 2017 data, any tabulation with fewer than 3 establishments were omitted from the release. Data for these establishments are included in the broader total.

Year	County	State of Kansas	Non Metro Kansas	County Rank	Per 1000 or \$ Per Capita
2000	.	1,362,735	.	.	.
2001	.	1,279,253	.	.	.
2002	.	1,311,368	.	.	.
2003	.	1,352,119	.	.	.
2004	.	1,378,891	.	.	.
2005	.	1,510,876	.	.	.
2006	.	1,626,320	.	.	.
2007	.	2,233,654	.	.	.
2008	.	1,848,656	.	.	.
2009	.	1,601,158	.	.	.
2010	.	2,003,048	.	.	.
2011	.	1,677,619	.	.	.
2012	.	1,834,430	.	.	.
2013	.	1,938,100	.	.	.
2014	.	2,117,232	.	.	.
2015	.	2,451,126	.	.	.



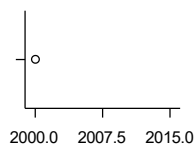
**TOTAL ANNUAL PAYROLL(\$000):  
ADMIN, SUPPORT, WASTE MGMT.,  
AND REMEDIATION**

U.S. Census Bureau, County Business Patterns. Beginning with the 2017 data, any tabulation with fewer than 3 establishments were omitted from the release. Data for these establishments are included in the broader total.

Year	County	State of Kansas	Non Metro Kansas	County Rank	Per 1000 or \$ Per Capita
2000	.	1,388,712	.	.	.
2001	.	1,416,480	.	.	.
2002	.	1,378,905	.	.	.
2003	.	1,387,061	.	.	.
2004	.	1,544,442	.	.	.
2005	.	1,694,687	.	.	.
2006	.	1,800,846	.	.	.
2007	.	1,978,025	.	.	.
2008	.	2,096,864	.	.	.
2009	.	1,832,540	.	.	.
2010	.	2,117,325	.	.	.
2011	.	2,114,970	.	.	.
2012	.	2,230,250	.	.	.
2013	.	2,214,320	.	.	.
2014	315	2,444,170	.	.	35.1
2015	298	2,577,592	.	.	33.7
2016	316	2,760,706	.	.	36.3
2017	442	3,026,927	.	.	50.8
2018	448	3,007,347	.	.	51.7
2019	2,615	3,075,485	.	.	306.7
2020	2,830	3,250,046	.	.	328.2

County: county value. Kansas: state value. County Rank: highest county value ranked #1. (\$000): thousands of dollars. Nonmetro Kansas: Kansas total less Metropolitan Areas as defined by the Office of Management and Budget (OMB; released 3/6/2020). Per 1000: For nonmoney amounts, Per 1000=(county value / county population for the same year as the data) x 1000. \$ Per capita=(county value / county population for the same year as the data). Value= . indicates missing or suppressed data or value not calculated.

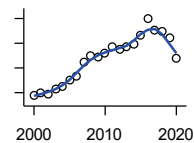
**Business**



**TOTAL ANNUAL PAYROLL(\$000):  
EDUCATIONAL SERVICES**

U.S. Census Bureau, County Business Patterns. Beginning with the 2017 data, any tabulation with fewer than 3 establishments were omitted from the release. Data for these establishments are included in the broader total.

Year	County	State of Kansas	Non Metro Kansas	County Rank	Per 1000 or \$ Per Capita
2000	131	299,843	.	.	12.7
2001	.	320,606	.	.	.
2002	.	353,531	.	.	.
2003	.	350,814	.	.	.
2004	.	361,644	.	.	.
2005	.	375,781	.	.	.
2006	.	400,565	.	.	.
2007	.	414,233	.	.	.
2008	.	463,210	.	.	.
2009	.	468,856	.	.	.
2010	.	487,670	.	.	.
2011	.	504,964	.	.	.
2012	.	508,448	.	.	.
2013	.	553,995	.	.	.
2014	.	612,073	.	.	.
2015	.	579,794	.	.	.



**TOTAL ANNUAL PAYROLL(\$000):  
HEALTH CARE AND SOCIAL ASSISTANCE**

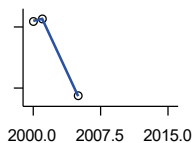
U.S. Census Bureau, County Business Patterns. Beginning with the 2017 data, any tabulation with fewer than 3 establishments were omitted from the release. Data for these establishments are included in the broader total.

Year	County	State of Kansas	Non Metro Kansas	County Rank	Per 1000 or \$ Per Capita
2000	9,386	4,120,595	.	.	908.4
2001	9,871	4,445,027	.	.	966.2
2002	9,673	4,705,220	.	.	957.3
2003	10,814	4,939,323	.	.	1,074.6
2004	11,181	5,232,394	.	.	1,142.8
2005	12,563	5,487,089	.	.	1,285.6
2006	13,352	5,814,218	.	.	1,369.9
2007	16,073	6,186,471	.	.	1,643.0
2008	17,385	6,490,627	.	.	1,812.4
2009	17,285	6,749,962	.	.	1,822.4
2010	17,992	6,871,727	.	.	1,912.2
2011	19,194	7,129,655	.	.	2,077.7
2012	18,804	7,614,853	.	.	2,061.8
2013	19,183	7,541,515	.	.	2,110.1
2014	19,763	7,733,621	.	.	2,203.2
2015	21,666	7,969,650	.	.	2,449.5
2016	24,998	8,018,706	.	.	2,874.0
2017	22,565	8,384,998	.	.	2,591.6
2018	22,278	8,637,619	.	.	2,570.7
2019	21,178	8,854,414	.	.	2,484.2
2020	16,994	9,309,269	.	.	1,970.5

County: county value. Kansas: state value. County Rank: highest county value ranked #1. (\$000): thousands of dollars. Nonmetro Kansas: Kansas total less Metropolitan Areas as defined by the Office of Management and Budget (OMB; released 3/6/2020). Per 1000: For nonmoney amounts, Per 1000=(county value / county population for the same year as the data) x 1000. \$ Per capita=(county value / county population for the same year as the data). Value= . indicates missing or suppressed data or value not calculated.



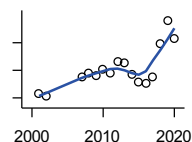
**Business**



**TOTAL ANNUAL PAYROLL(\$000):  
ARTS, ENTERTAINMENT, AND  
RECREATION**

U.S. Census Bureau, County Business Patterns. Beginning with the 2017 data, any tabulation with fewer than 3 establishments were omitted from the release. Data for these establishments are included in the broader total.

Year	County	State of Kansas	Non Metro Kansas	County Rank	Per 1000 or \$ Per Capita
2000	113	195,784	.	.	10.9
2001	114	203,511	.	.	11.2
2002	.	206,204	.	.	.
2003	.	185,049	.	.	.
2004	.	190,742	.	.	.
2005	76	196,594	.	.	7.8
2006	.	201,049	.	.	.
2007	.	220,435	.	.	.
2008	.	236,986	.	.	.
2009	.	237,116	.	.	.
2010	.	233,285	.	.	.
2011	.	234,351	.	.	.
2012	.	254,169	.	.	.
2013	.	278,474	.	.	.
2014	.	289,103	.	.	.
2015	.	300,253	.	.	.



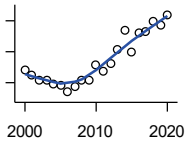
**TOTAL ANNUAL PAYROLL(\$000):  
ACCOMMODATION AND FOOD  
SERVICES**

U.S. Census Bureau, County Business Patterns. Beginning with the 2017 data, any tabulation with fewer than 3 establishments were omitted from the release. Data for these establishments are included in the broader total.

Year	County	State of Kansas	Non Metro Kansas	County Rank	Per 1000 or \$ Per Capita
2000	.	926,831	.	.	.
2001	1,070	960,196	.	.	104.7
2002	1,037	930,510	.	.	102.6
2003	.	992,313	.	.	.
2004	.	1,046,901	.	.	.
2005	.	1,101,854	.	.	.
2006	.	1,185,280	.	.	.
2007	1,373	1,431,100	.	.	140.3
2008	1,442	1,271,594	.	.	150.3
2009	1,392	1,283,065	.	.	146.8
2010	1,509	1,296,556	.	.	160.4
2011	1,453	1,364,281	.	.	157.3
2012	1,660	1,388,337	.	.	182.0
2013	1,637	1,476,335	.	.	180.1
2014	1,429	1,572,021	.	.	159.3
2015	1,285	1,640,144	.	.	145.3
2016	1,260	1,709,193	.	.	144.9
2017	1,388	1,824,791	.	.	159.4
2018	1,981	1,880,364	.	.	228.6
2019	2,403	1,958,603	.	.	281.9
2020	2,069	1,745,238	.	.	239.9

County: county value. Kansas: state value. County Rank: highest county value ranked #1. (\$000): thousands of dollars. Nonmetro Kansas: Kansas total less Metropolitan Areas as defined by the Office of Management and Budget (OMB; released 3/6/2020). Per 1000: For nonmoney amounts, Per 1000=(county value / county population for the same year as the data) x 1000. \$ Per capita=(county value / county population for the same year as the data). Value= . indicates missing or suppressed data or value not calculated.

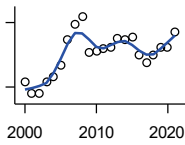
**Business**



**TOTAL ANNUAL PAYROLL(\$000):  
OTHER SERVICES**

U.S. Census Bureau, County Business Patterns. Beginning with the 2017 data, any tabulation with fewer than 3 establishments were omitted from the release. Data for these establishments are included in the broader total.

Year	County	State of Kansas	Non Metro Kansas	County Rank	Per 1000 or \$ Per Capita
2000	1,202	965,540	.	.	116.3
2001	1,115	996,716	.	.	109.1
2002	1,030	1,007,464	.	.	101.9
2003	1,039	979,466	.	.	103.2
2004	973	970,383	.	.	99.4
2005	951	1,005,537	.	.	97.3
2006	846	1,055,932	.	.	86.8
2007	940	1,141,551	.	.	96.1
2008	1,042	1,184,016	.	.	108.6
2009	1,050	1,167,154	.	.	110.7
2010	1,286	1,170,201	.	.	136.7
2011	1,179	1,173,775	.	.	127.6
2012	1,308	1,217,210	.	.	143.4
2013	1,538	1,254,933	.	.	169.2
2014	1,850	1,305,563	.	.	206.2
2015	1,494	1,341,075	.	.	168.9
2016	1,806	1,351,375	.	.	207.6
2017	1,821	1,344,179	.	.	209.1
2018	1,982	1,382,801	.	.	228.7
2019	1,925	1,427,711	.	.	225.8
2020	2,096	1,420,859	.	.	243.0



**NOMINAL TAXABLE RETAIL SALES  
(million\$)**

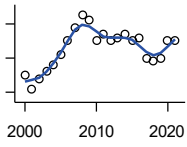
Kansas Department of Revenue

Year	County	State of Kansas	Non Metro Kansas	County Rank	Per 1000 or \$ Per Capita
2000	52.4	30,119.0	8,831.7	51	5.1
2001	46.8	30,202.2	8,700.3	53	4.6
2002	47.0	29,380.8	8,241.5	52	4.7
2003	52.2	30,694.0	8,710.6	52	5.2
2004	55.0	31,922.6	9,062.5	51	5.6
2005	60.3	32,924.2	9,386.6	51	6.2
2006	72.1	34,937.6	10,042.1	48	7.4
2007	79.2	36,180.1	10,553.2	46	8.1
2008	82.8	37,559.5	11,126.9	45	8.6
2009	66.3	35,211.8	10,351.5	51	7.0
2010	66.4	35,655.7	10,606.1	53	7.1
2011	68.0	37,257.0	11,153.5	55	7.4
2012	68.5	38,988.8	11,749.1	59	7.5
2013	72.5	40,009.0	11,993.8	59	8.0
2014	71.8	41,299.0	12,365.4	60	8.0
2015	73.5	41,635.8	11,747.6	54	8.3
2016	64.9	42,040.2	11,523.5	56	7.5
2017	61.6	41,940.1	11,449.9	57	7.1
2018	64.6	42,732.3	11,643.9	55	7.5
2019	68.4	43,732.5	12,062.7	56	8.0
2020	68.6	43,689.9	12,331.7	56	8.0
2021	75.7	48,532.8	13,413.0	55	8.9

County: county value. Kansas: state value. County Rank: highest county value ranked #1. (\$000): thousands of dollars. Nonmetro Kansas: Kansas total less Metropolitan Areas as defined by the Office of Management and Budget (OMB; released 3/6/2020). Per 1000: For nonmoney amounts, Per 1000=(county value / county population for the same year as the data) x 1000. \$ Per capita=(county value / county population for the same year as the data). Value= . indicates missing or suppressed data or value not calculated.

**Business**

RETAIL PULL FACTOR



Kansas Direct Program, Kansas State University Cooperative Extension Service (1980-1999); Kansas Department of Revenue (2000- )

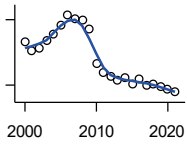
Year	County	State of Kansas	Non Metro Kansas	County Rank	Per 1000 or \$ Per Capita
2000	0.45	.	.	83	.
2001	0.41	.	.	86	.
2002	0.44	.	.	80	.
2003	0.46	.	.	82	.
2004	0.48	.	.	81	.
2005	0.51	.	.	78	.
2006	0.55	.	.	74	.
2007	0.59	.	.	69	.
2008	0.63	.	.	70	.
2009	0.61	.	.	79	.
2010	0.55	.	.	83	.
2011	0.57	.	.	84	.
2012	0.55	.	.	84	.
2013	0.56	.	.	83	.
2014	0.57	.	.	86	.
2015	0.55	.	.	86	.
2016	0.56	.	.	85	.
2017	0.50	.	.	91	.
2018	0.49	.	.	93	.
2019	0.50	.	.	94	.
2020	0.55	.	.	87	.
2021	0.55	.	.	89	.

County: county value. Kansas: state value. County Rank: highest county value ranked #1. (\$000): thousands of dollars. Nonmetro Kansas: Kansas total less Metropolitan Areas as defined by the Office of Management and Budget (OMB; released 3/6/2020). Per 1000: For nonmoney amounts, Per 1000=(county value / county population for the same year as the data) x 1000. \$ Per capita=(county value / county population for the same year as the data). Value= . indicates missing or suppressed data or value not calculated.

**Employment**

CIVILIAN LABOR FORCE (BLS-Place of Residence; 1990- )

U.S. Department of Labor, Bureau of Labor Statistics (BLS)



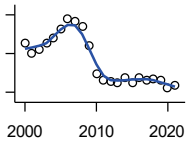
Year	County	State of Kansas	Non Metro Kansas	County Rank	Per 1000 or \$ Per Capita
2000	4,983	1,402,606	482,229	44	482.3
2001	4,783	1,398,521	475,280	44	468.2
2002	4,839	1,419,335	482,428	44	478.9
2003	5,029	1,441,065	490,161	44	499.8
2004	5,174	1,458,910	494,509	44	528.8
2005	5,372	1,458,767	490,047	44	549.7
2006	5,611	1,467,553	498,594	42	575.7
2007	5,523	1,485,414	497,048	43	564.6
2008	5,502	1,493,365	504,522	44	573.6
2009	5,286	1,512,572	516,311	45	557.3
2010	4,492	1,500,463	492,594	50	477.4
2011	4,286	1,498,000	492,563	50	464.0
2012	4,204	1,490,808	489,349	50	461.0
2013	4,119	1,489,395	485,484	50	453.1
2014	4,175	1,494,203	481,813	50	465.4
2015	4,019	1,493,782	477,546	50	454.4
2016	4,133	1,491,961	468,258	49	475.2
2017	4,007	1,488,346	461,063	48	460.2
2018	4,027	1,488,027	456,866	48	464.7
2019	3,954	1,497,517	455,858	48	463.8
2020	3,903	1,493,706	452,935	48	452.6
2021	3,837	1,495,665	453,398	49	450.0

County: county value. Kansas: state value. County Rank: highest county value ranked #1. (\$000): thousands of dollars. Nonmetro Kansas: Kansas total less Metropolitan Areas as defined by the Office of Management and Budget (OMB; released 3/6/2020). Per 1000: For nonmoney amounts, Per 1000=(county value / county population for the same year as the data) x 1000. \$ Per capita=(county value / county population for the same year as the data). Value= . indicates missing or suppressed data or value not calculated.

**Employment**

EMPLOYED (BLS-Place of Residence; 1990- )

U.S. Department of Labor, Bureau of Labor Statistics (BLS)



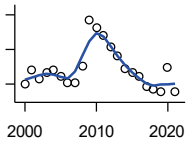
Year	County	State of Kansas	Non Metro Kansas	County Rank	Per 1000 or \$ Per Capita
2000	4,782	1,349,841	464,962	44	462.8
2001	4,502	1,338,775	455,154	44	440.7
2002	4,609	1,347,163	461,241	44	456.2
2003	4,762	1,361,115	467,622	44	473.2
2004	4,895	1,378,355	470,330	44	500.3
2005	5,130	1,384,654	467,722	44	525.0
2006	5,404	1,402,950	479,174	42	554.4
2007	5,317	1,422,109	477,983	43	543.5
2008	5,195	1,425,022	484,056	44	541.6
2009	4,714	1,408,142	485,797	46	497.0
2010	3,965	1,396,172	461,635	51	421.4
2011	3,803	1,402,198	463,723	51	411.7
2012	3,787	1,405,638	463,376	51	415.2
2013	3,754	1,410,470	461,405	52	412.9
2014	3,889	1,426,892	461,797	50	433.6
2015	3,755	1,431,533	457,899	51	424.5
2016	3,886	1,431,920	449,356	50	446.8
2017	3,819	1,434,516	445,003	48	438.6
2018	3,856	1,439,329	442,716	48	445.0
2019	3,801	1,450,705	442,108	48	445.9
2020	3,607	1,408,965	433,229	50	418.3
2021	3,683	1,447,323	441,159	50	432.0

County: county value. Kansas: state value. County Rank: highest county value ranked #1. (\$000): thousands of dollars. Nonmetro Kansas: Kansas total less Metropolitan Areas as defined by the Office of Management and Budget (OMB; released 3/6/2020). Per 1000: For nonmoney amounts, Per 1000=(county value / county population for the same year as the data) x 1000. \$ Per capita=(county value / county population for the same year as the data). Value= . indicates missing or suppressed data or value not calculated.

**Employment**

UNEMPLOYED (BLS-Place of Residence; 1990- )

U.S. Department of Labor, Bureau of Labor Statistics (BLS)

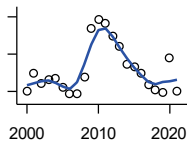


Year	County	State of Kansas	Non Metro Kansas	County Rank	Per 1000 or \$ Per Capita
2000	201	52,765	17,267	42	19.5
2001	281	59,746	20,126	40	27.5
2002	230	72,172	21,187	42	22.8
2003	267	79,950	22,539	41	26.5
2004	279	80,555	24,179	41	28.5
2005	242	74,113	22,325	43	24.8
2006	207	64,603	19,420	43	21.2
2007	206	63,305	19,065	43	21.1
2008	307	68,343	20,466	38	32.0
2009	572	104,430	30,514	34	60.3
2010	527	104,291	30,959	35	56.0
2011	483	95,802	28,840	37	52.3
2012	417	85,170	25,973	37	45.7
2013	365	78,925	24,079	38	40.1
2014	286	67,311	20,016	38	31.9
2015	264	62,249	19,647	39	29.8
2016	247	60,041	18,902	39	28.4
2017	188	53,830	16,060	40	21.6
2018	171	48,698	14,150	40	19.7
2019	153	46,812	13,750	42	17.9
2020	296	84,741	19,706	38	34.3
2021	154	48,342	12,239	38	18.1

County: county value. Kansas: state value. County Rank: highest county value ranked #1. (\$000): thousands of dollars. Nonmetro Kansas: Kansas total less Metropolitan Areas as defined by the Office of Management and Budget (OMB; released 3/6/2020). Per 1000: For nonmoney amounts, Per 1000=(county value / county population for the same year as the data) x 1000. \$ Per capita=(county value / county population for the same year as the data). Value= . indicates missing or suppressed data or value not calculated.

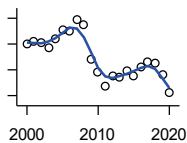
**Employment**

UNEMPLOYMENT RATE (BLS-Place of Residence; 1990- )



U.S. Department of Labor, Bureau of Labor Statistics (BLS)

Year	County	State of Kansas	Non Metro Kansas	County Rank	Per 1000 or \$ Per Capita
2000	4.0	3.8	3.6	28	.
2001	5.9	4.3	4.2	8	.
2002	4.8	5.1	4.4	30	.
2003	5.3	5.5	4.6	26	.
2004	5.4	5.5	4.9	29	.
2005	4.5	5.1	4.6	42	.
2006	3.7	4.4	3.9	47	.
2007	3.7	4.3	3.8	51	.
2008	5.6	4.6	4.1	11	.
2009	10.8	6.9	5.9	2	.
2010	11.7	7.0	6.3	1	.
2011	11.3	6.4	5.9	1	.
2012	9.9	5.7	5.3	2	.
2013	8.9	5.3	5.0	1	.
2014	6.9	4.5	4.2	4	.
2015	6.6	4.2	4.1	2	.
2016	6.0	4.0	4.0	6	.
2017	4.7	3.6	3.5	10	.
2018	4.2	3.3	3.1	9	.
2019	3.9	3.1	3.0	11	.
2020	7.6	5.7	4.4	4	.
2021	4.0	3.2	2.7	8	.



BEA EMPLOYMENT: TOTAL (Place of Work)

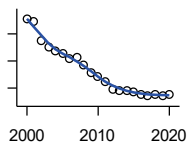
U.S. Bureau of Economic Analysis, Regional Economic Information System (REIS)

Year	County	State of Kansas	Non Metro Kansas	County Rank	Per 1000 or \$ Per Capita
2000	5,764	1,760,312	604,361	46	557.9
2001	5,791	1,767,601	592,672	45	566.9
2002	5,781	1,746,077	585,387	45	572.1
2003	5,681	1,733,694	577,860	45	564.5
2004	5,861	1,750,876	578,750	43	599.0
2005	6,027	1,765,650	577,562	44	616.8
2006	6,008	1,795,507	583,041	44	616.4
2007	6,230	1,844,355	591,924	43	636.8
2008	6,133	1,858,069	594,368	43	639.4
2009	5,457	1,813,184	580,972	46	575.3
2010	5,207	1,801,873	579,758	47	553.4
2011	4,924	1,819,044	583,725	51	533.0
2012	5,131	1,841,393	591,748	48	562.6
2013	5,114	1,869,054	597,236	48	562.5
2014	5,223	1,895,859	601,291	48	582.3
2015	5,134	1,910,954	598,589	49	580.4
2016	5,300	1,916,152	592,580	46	609.3
2017	5,416	1,914,179	584,337	46	622.0
2018	5,387	1,926,242	580,213	45	621.6
2019	5,147	1,925,204	574,496	45	603.8
2020	4,815	1,851,247	556,671	48	558.3

County: county value. Kansas: state value. County Rank: highest county value ranked #1. (\$000): thousands of dollars. Nonmetro Kansas: Kansas total less Metropolitan Areas as defined by the Office of Management and Budget (OMB; released 3/6/2020). Per 1000: For nonmoney amounts, Per 1000=(county value / county population for the same year as the data) x 1000. \$ Per capita=(county value / county population for the same year as the data). Value= . indicates missing or suppressed data or value not calculated.

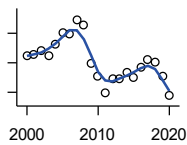
**Employment**

**BEA EMPLOYMENT: FARM**



U.S. Bureau of Economic Analysis,  
Regional Economic Information System  
(REIS)

Year	County	State of Kansas	Non Metro Kansas	County Rank	Per 1000 or \$ Per Capita
2000	654	77,477	59,088	55	63.3
2001	647	78,177	59,647	57	63.3
2002	574	70,532	53,893	60	56.8
2003	551	68,516	52,099	59	54.8
2004	537	67,586	51,246	57	54.9
2005	528	66,829	50,386	56	54.0
2006	510	64,910	48,728	56	52.3
2007	513	65,639	49,037	56	52.4
2008	483	63,820	47,682	60	50.4
2009	457	62,798	46,960	65	48.2
2010	441	63,882	47,984	72	46.9
2011	426	65,761	49,707	80	46.1
2012	396	63,753	48,167	85	43.4
2013	393	62,739	47,255	84	43.2
2014	391	64,308	48,722	86	43.6
2015	387	64,416	48,927	87	43.8
2016	377	63,840	48,539	88	43.3
2017	370	61,876	46,936	87	42.5
2018	375	63,233	48,069	88	43.3
2019	374	63,300	48,167	88	43.9
2020	376	64,281	49,038	88	43.6



**BEA EMPLOYMENT: NON-FARM**

U.S. Bureau of Economic Analysis,  
Regional Economic Information System  
(REIS)

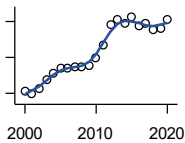
Year	County	State of Kansas	Non Metro Kansas	County Rank	Per 1000 or \$ Per Capita
2000	5,110	1,682,835	545,273	44	494.6
2001	5,144	1,689,424	533,025	44	503.5
2002	5,207	1,675,545	531,494	45	515.3
2003	5,130	1,665,178	525,761	45	509.8
2004	5,324	1,683,290	527,504	42	544.2
2005	5,499	1,698,821	527,176	43	562.7
2006	5,498	1,730,597	534,313	43	564.1
2007	5,717	1,778,716	542,887	41	584.4
2008	5,650	1,794,249	546,686	43	589.0
2009	5,000	1,750,386	534,012	46	527.1
2010	4,766	1,737,991	531,774	46	506.5
2011	4,498	1,753,283	534,018	48	486.9
2012	4,735	1,777,640	543,581	47	519.2
2013	4,721	1,806,315	549,981	48	519.3
2014	4,832	1,831,551	552,569	48	538.7
2015	4,747	1,846,538	549,662	48	536.7
2016	4,923	1,852,312	544,041	45	566.0
2017	5,046	1,852,303	537,401	45	579.5
2018	5,012	1,863,009	532,144	44	578.4
2019	4,773	1,861,904	526,329	44	559.9
2020	4,439	1,786,966	507,633	46	514.7

County: county value. Kansas: state value. County Rank: highest county value ranked #1. (\$000): thousands of dollars. Nonmetro Kansas: Kansas total less Metropolitan Areas as defined by the Office of Management and Budget (OMB; released 3/6/2020). Per 1000: For nonmoney amounts, Per 1000=(county value / county population for the same year as the data) x 1000. \$ Per capita=(county value / county population for the same year as the data). Value= . indicates missing or suppressed data or value not calculated.



**Employment**

**AVERAGE WAGE PER JOB (\$)**



U.S. Bureau of Economic Analysis,  
Regional Economic Information System  
(REIS)

Year	County	State of Kansas	Non Metro Kansas	County Rank	Per 1000 or \$ Per Capita
2000	25,614	31,854	24,396	29	.
2001	24,862	32,859	26,379	52	.
2002	26,227	33,707	26,331	33	.
2003	28,779	35,078	28,911	39	.
2004	30,639	35,932	29,747	29	.
2005	31,883	37,467	31,646	36	.
2006	31,997	40,038	31,993	35	.
2007	32,517	41,500	33,484	46	.
2008	32,377	44,197	36,256	75	.
2009	32,746	43,860	35,739	64	.
2010	34,788	45,370	38,631	64	.
2011	38,513	48,280	42,324	66	.
2012	44,050	50,549	42,015	40	.
2013	45,688	52,629	46,073	49	.
2014	44,615	51,959	43,562	39	.
2015	46,296	52,250	42,320	29	.
2016	43,705	51,664	41,964	36	.
2017	44,486	53,007	42,137	31	.
2018	42,873	54,790	44,514	46	.
2019	43,201	56,956	45,336	51	.
2020	45,487	60,597	49,183	61	.

**BEA EMPLOYMENT: FORESTRY, FISHING, HUNTING, AND AG SUPPORT**

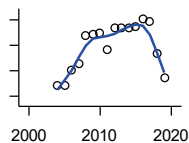
U.S. Bureau of Economic Analysis,  
Regional Economic Information System  
(REIS)

Year	County	State of Kansas	Non Metro Kansas	County Rank	Per 1000 or \$ Per Capita
2001	.	7,059	.	.	.
2002	.	8,045	.	.	.
2003	.	7,313	.	.	.
2004	.	7,623	.	.	.
2005	.	7,962	.	.	.
2006	.	7,748	.	.	.
2007	.	8,228	.	.	.
2008	.	8,646	.	.	.
2009	.	8,982	.	.	.
2010	.	9,251	.	.	.
2011	.	9,410	.	.	.
2012	.	9,691	.	.	.
2013	.	10,014	.	.	.
2014	.	10,708	.	.	.
2015	.	10,020	.	.	.
2016	.	10,383	.	.	.

County: county value. Kansas: state value. County Rank: highest county value ranked #1. (\$000): thousands of dollars. Nonmetro Kansas: Kansas total less Metropolitan Areas as defined by the Office of Management and Budget (OMB; released 3/6/2020). Per 1000: For nonmoney amounts, Per 1000=(county value / county population for the same year as the data) x 1000. \$ Per capita=(county value / county population for the same year as the data). Value= . indicates missing or suppressed data or value not calculated.

**Employment**

**BEA EMPLOYMENT: MINING**



U.S. Bureau of Economic Analysis,  
Regional Economic Information System  
(REIS)

Year	County	State of Kansas	Non Metro Kansas	County Rank	Per 1000 or \$ Per Capita
2001	.	19,592	.	.	.
2002	.	17,635	.	.	.
2003	.	19,869	.	.	.
2004	70	18,466	.	40	.
2005	72	19,489	.	36	.
2006	101	22,403	.	36	.
2007	114	24,043	.	33	.
2008	170	31,467	.	31	.
2009	171	29,941	.	28	.
2010	175	36,124	.	32	.
2011	142	31,658	.	33	.
2012	184	42,405	.	35	.
2013	184	46,585	.	38	.
2014	184	45,526	.	39	.
2015	187	46,460	.	40	.
2016	202	48,555	.	39	.
2017	197	40,710	.	34	.
2018	135	32,021	.	39	.
2019	87	29,101	.	44	.

**BEA EMPLOYMENT: UTILITIES**

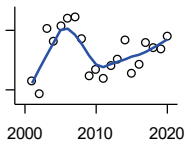
U.S. Bureau of Economic Analysis,  
Regional Economic Information System  
(REIS)

Year	County	State of Kansas	Non Metro Kansas	County Rank	Per 1000 or \$ Per Capita
2001	.	7,608	.	.	.
2002	.	7,087	.	.	.
2003	.	7,253	.	.	.
2004	.	7,356	.	.	.
2005	.	7,447	.	.	.
2006	.	7,478	.	.	.
2007	.	7,584	.	.	.
2008	.	7,855	.	.	.
2009	.	7,941	.	.	.
2010	.	8,028	.	.	.
2011	.	8,213	.	.	.
2012	.	8,155	.	.	.
2013	.	7,949	.	.	.
2014	.	7,985	.	.	.
2015	.	7,040	.	.	.
2016	.	7,133	.	.	.

County: county value. Kansas: state value. County Rank: highest county value ranked #1. (\$000): thousands of dollars. Nonmetro Kansas: Kansas total less Metropolitan Areas as defined by the Office of Management and Budget (OMB; released 3/6/2020). Per 1000: For nonmoney amounts, Per 1000=(county value / county population for the same year as the data) x 1000. \$ Per capita=(county value / county population for the same year as the data). Value= . indicates missing or suppressed data or value not calculated.

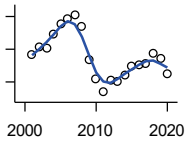
**Employment**

**BEA EMPLOYMENT:  
CONSTRUCTION**



U.S. Bureau of Economic Analysis,  
Regional Economic Information System  
(REIS)

Year	County	State of Kansas	Non Metro Kansas	County Rank	Per 1000 or \$ Per Capita
2001	272	92,647	27,972	46	.
2002	239	90,370	.	49	.
2003	404	91,725	26,681	33	.
2004	372	93,271	.	34	.
2005	412	94,836	.	32	.
2006	429	97,449	.	33	.
2007	434	99,119	29,179	36	.
2008	380	97,741	.	38	.
2009	286	90,165	28,077	46	.
2010	303	84,708	26,402	42	.
2011	280	83,332	25,999	45	.
2012	312	85,966	.	42	.
2013	327	88,094	.	44	.
2014	377	91,143	.	35	.
2015	291	91,458	27,583	45	.
2016	315	93,539	27,151	43	.
2017	370	92,046	25,579	38	.
2018	355	92,985	25,530	36	.
2019	354	94,858	25,701	37	.
2020	385	94,186	26,085	36	.



**BEA EMPLOYMENT:  
MANUFACTURING**

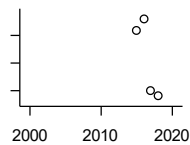
U.S. Bureau of Economic Analysis,  
Regional Economic Information System  
(REIS)

Year	County	State of Kansas	Non Metro Kansas	County Rank	Per 1000 or \$ Per Capita
2001	1,331	199,980	73,170	25	.
2002	1,429	188,905	70,691	24	.
2003	1,411	179,013	68,418	24	.
2004	1,587	181,738	69,669	22	.
2005	1,718	185,459	71,072	21	.
2006	1,775	188,047	71,704	21	.
2007	1,821	192,930	73,488	21	.
2008	1,672	193,116	72,235	23	.
2009	1,266	173,854	64,961	23	.
2010	1,034	166,000	62,884	26	.
2011	875	167,302	64,361	32	.
2012	1,020	169,308	65,944	31	.
2013	1,008	170,113	67,251	31	.
2014	1,084	169,307	68,299	30	.
2015	1,196	168,324	66,978	25	.
2016	1,204	167,723	65,796	26	.
2017	1,225	168,438	66,795	26	.
2018	1,343	171,778	68,181	24	.
2019	1,293	173,605	67,879	25	.
2020	1,102	165,228	65,658	28	.

County: county value. Kansas: state value. County Rank: highest county value ranked #1. (\$000): thousands of dollars. Nonmetro Kansas: Kansas total less Metropolitan Areas as defined by the Office of Management and Budget (OMB; released 3/6/2020). Per 1000: For nonmoney amounts, Per 1000=(county value / county population for the same year as the data) x 1000. \$ Per capita=(county value / county population for the same year as the data). Value= . indicates missing or suppressed data or value not calculated.

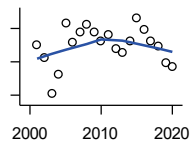
**Employment**

**BEA EMPLOYMENT: WHOLESALE TRADE**



U.S. Bureau of Economic Analysis,  
Regional Economic Information System  
(REIS)

Year	County	State of Kansas	Non Metro Kansas	County Rank	Per 1000 or \$ Per Capita
2001	.	65,698	.	.	.
2002	.	65,408	.	.	.
2003	.	63,504	.	.	.
2004	.	64,434	.	.	.
2005	.	64,587	.	.	.
2006	.	64,743	.	.	.
2007	.	65,993	.	.	.
2008	.	67,693	.	.	.
2009	.	65,954	.	.	.
2010	.	64,376	.	.	.
2011	.	64,712	.	.	.
2012	.	63,973	.	.	.
2013	.	64,999	.	.	.
2014	.	69,295	.	.	.
2015	86	68,444	.	70	.
2016	88	64,843	.	67	.
2017	75	65,014	.	72	.
2018	74	64,745	.	73	.



**BEA EMPLOYMENT: RETAIL TRADE**

U.S. Bureau of Economic Analysis,  
Regional Economic Information System  
(REIS)

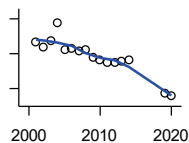
Year	County	State of Kansas	Non Metro Kansas	County Rank	Per 1000 or \$ Per Capita
2001	400	198,069	.	53	.
2002	382	196,112	.	55	.
2003	328	194,545	64,173	65	.
2004	356	192,957	63,265	59	.
2005	434	191,656	62,506	49	.
2006	404	190,391	62,082	54	.
2007	419	190,643	61,716	53	.
2008	431	185,907	59,783	51	.
2009	419	181,262	58,714	52	.
2010	406	177,858	57,470	51	.
2011	415	180,548	57,734	51	.
2012	394	180,596	57,349	51	.
2013	390	183,245	57,556	51	.
2014	406	185,899	57,855	51	.
2015	441	188,421	58,516	50	.
2016	423	188,505	57,864	50	.
2017	406	186,633	56,715	50	.
2018	398	183,323	.	49	.
2019	373	177,240	53,427	51	.
2020	367	171,777	52,563	51	.

County: county value. Kansas: state value. County Rank: highest county value ranked #1. (\$000): thousands of dollars. Nonmetro Kansas: Kansas total less Metropolitan Areas as defined by the Office of Management and Budget (OMB; released 3/6/2020). Per 1000: For nonmoney amounts, Per 1000=(county value / county population for the same year as the data) x 1000. \$ Per capita=(county value / county population for the same year as the data). Value= . indicates missing or suppressed data or value not calculated.

**Employment**

**BEA EMPLOYMENT:  
TRANSPORTATION AND  
WAREHOUSING**

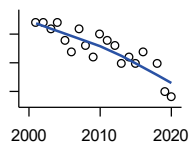
U.S. Bureau of Economic Analysis,  
Regional Economic Information System  
(REIS)



Year	County	State of Kansas	Non Metro Kansas	County Rank	Per 1000 or \$ Per Capita
2001	283	56,302	.	18	.
2002	269	55,319	.	19	.
2003	289	55,509	.	18	.
2004	339	55,479	.	17	.
2005	260	56,287	.	20	.
2006	266	57,506	.	21	.
2007	259	59,277	.	20	.
2008	260	58,725	.	21	.
2009	240	56,238	.	20	.
2010	232	55,179	.	19	.
2011	225	57,449	.	17	.
2012	226	59,756	.	18	.
2013	230	59,780	.	20	.
2014	234	60,565	.	21	.
2015	.	63,256	.	.	.
2016	.	65,705	.	.	.
2019	136	81,209	.	30	.
2020	128	80,543	.	36	.

**BEA EMPLOYMENT: INFORMATION**

U.S. Bureau of Economic Analysis,  
Regional Economic Information System  
(REIS)

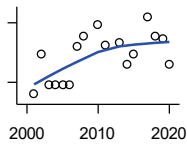


Year	County	State of Kansas	Non Metro Kansas	County Rank	Per 1000 or \$ Per Capita
2001	27	54,895	.	59	.
2002	27	50,728	.	59	.
2003	26	48,328	6,860	61	.
2004	27	45,617	.	57	.
2005	24	43,840	.	59	.
2006	22	43,925	.	60	.
2007	26	45,115	.	54	.
2008	23	42,958	.	54	.
2009	21	38,677	.	56	.
2010	25	33,432	.	57	.
2011	24	32,160	.	55	.
2012	23	31,829	.	54	.
2013	20	31,737	.	55	.
2014	21	32,316	.	57	.
2015	20	25,282	.	52	.
2016	22	24,998	.	53	.
2018	20	23,165	.	54	.
2019	15	22,078	.	57	.
2020	14	20,810	.	58	.

County: county value. Kansas: state value. County Rank: highest county value ranked #1. (\$000): thousands of dollars. Nonmetro Kansas: Kansas total less Metropolitan Areas as defined by the Office of Management and Budget (OMB; released 3/6/2020). Per 1000: For nonmoney amounts, Per 1000=(county value / county population for the same year as the data) x 1000. \$ Per capita=(county value / county population for the same year as the data). Value= . indicates missing or suppressed data or value not calculated.

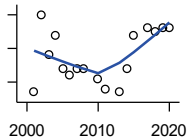
**Employment**

**BEA EMPLOYMENT: FINANCE AND INSURANCE**



U.S. Bureau of Economic Analysis,  
Regional Economic Information System  
(REIS)

Year	County	State of Kansas	Non Metro Kansas	County Rank	Per 1000 or \$ Per Capita
2001	164	76,118	.	52	.
2002	184	78,206	.	48	.
2003	169	78,441	.	52	.
2004	169	78,350	.	52	.
2005	169	78,952	.	48	.
2006	169	80,900	.	49	.
2007	188	86,094	.	48	.
2008	193	89,590	.	47	.
2009	.	93,573	.	.	.
2010	199	92,428	.	47	.
2011	189	99,495	.	48	.
2012	.	98,640	.	.	.
2013	190	99,998	.	48	.
2014	179	98,209	.	46	.
2015	184	100,534	.	47	.
2016	.	102,699	.	.	.
2017	203	101,563	.	43	.
2018	193	102,816	.	49	.
2019	192	100,276	.	49	.
2020	179	101,626	.	48	.



**BEA EMPLOYMENT: REAL ESTATE, RENTAL, AND LEASING**

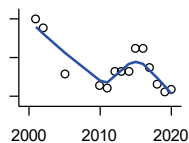
U.S. Bureau of Economic Analysis,  
Regional Economic Information System  
(REIS)

Year	County	State of Kansas	Non Metro Kansas	County Rank	Per 1000 or \$ Per Capita
2001	67	45,237	.	46	.
2002	90	44,970	.	39	.
2003	78	47,095	.	45	.
2004	84	50,181	.	46	.
2005	74	53,335	.	45	.
2006	72	55,342	.	47	.
2007	74	57,694	.	47	.
2008	74	57,933	.	44	.
2009	.	57,132	.	.	.
2010	71	59,578	.	50	.
2011	68	61,821	.	46	.
2012	.	60,432	.	.	.
2013	67	62,134	.	51	.
2014	74	64,705	.	53	.
2015	84	66,604	.	50	.
2016	.	68,395	.	.	.
2017	86	70,304	.	54	.
2018	85	72,631	.	56	.
2019	86	69,119	.	52	.
2020	86	68,452	.	53	.

County: county value. Kansas: state value. County Rank: highest county value ranked #1. (\$000): thousands of dollars. Nonmetro Kansas: Kansas total less Metropolitan Areas as defined by the Office of Management and Budget (OMB; released 3/6/2020). Per 1000: For nonmoney amounts, Per 1000=(county value / county population for the same year as the data) x 1000. \$ Per capita=(county value / county population for the same year as the data). Value= . indicates missing or suppressed data or value not calculated.

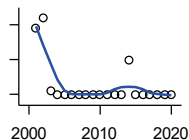
**Employment**

**BEA EMPLOYMENT: PROFESSIONAL AND TECHNICAL SERVICES**



U.S. Bureau of Economic Analysis, Regional Economic Information System (REIS)

Year	County	State of Kansas	Non Metro Kansas	County Rank	Per 1000 or \$ Per Capita
2001	160	81,396	.	35	.
2002	150	80,684	.	33	.
2003	.	80,311	.	.	.
2004	.	85,550	.	.	.
2005	103	85,003	.	46	.
2006	.	87,381	.	.	.
2007	.	92,717	.	.	.
2008	.	95,362	.	.	.
2009	.	93,232	.	.	.
2010	91	93,037	.	53	.
2011	89	93,237	.	58	.
2012	105	95,360	.	54	.
2013	106	100,795	.	55	.
2014	105	102,210	.	55	.
2015	130	105,625	.	46	.
2016	129	108,059	.	45	.
2017	109	109,041	.	50	.
2018	92	110,513	.	56	.
2019	85	109,637	.	56	.
2020	87	108,634	.	56	.



**BEA EMPLOYMENT: MANAGEMENT OF COMPANIES AND ENTERPRISES**

U.S. Bureau of Economic Analysis, Regional Economic Information System (REIS)

Year	County	State of Kansas	Non Metro Kansas	County Rank	Per 1000 or \$ Per Capita
2001	19	13,832	.	22	.
2002	22	12,576	.	19	.
2003	1	11,135	.	26	.
2004	0	10,614	.	67	.
2005	0	11,811	.	66	.
2006	0	13,061	.	66	.
2007	0	13,398	.	69	.
2008	0	15,234	.	72	.
2009	0	14,849	.	75	.
2010	0	16,579	.	75	.
2011	0	15,343	.	75	.
2012	0	15,075	.	82	.
2013	0	16,667	.	81	.
2014	10	20,441	.	35	.
2015	0	29,604	.	78	.
2016	0	27,824	.	77	.
2017	0	27,767	.	77	.
2018	0	28,862	.	75	.
2019	0	30,512	.	74	.
2020	0	25,648	.	74	.

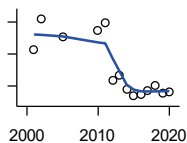
County: county value. Kansas: state value. County Rank: highest county value ranked #1. (\$000): thousands of dollars. Nonmetro Kansas: Kansas total less Metropolitan Areas as defined by the Office of Management and Budget (OMB; released 3/6/2020). Per 1000: For nonmoney amounts, Per 1000=(county value / county population for the same year as the data) x 1000. \$ Per capita=(county value / county population for the same year as the data). Value= . indicates missing or suppressed data or value not calculated.

**Employment**

**BEA EMPLOYMENT:  
ADMINISTRATIVE AND WASTE  
SERVICES**

U.S. Bureau of Economic Analysis,  
Regional Economic Information System  
(REIS)

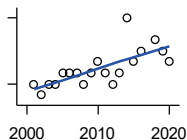
Year	County	State of Kansas	Non Metro Kansas	County Rank	Per 1000 or \$ Per Capita
2001	156	81,573	.	28	.
2002	205	82,992	.	27	.
2003	.	81,298	.	.	.
2004	.	85,721	.	.	.
2005	177	89,933	.	29	.
2006	.	93,688	.	.	.
2007	.	98,865	.	.	.
2008	.	97,440	.	.	.
2009	.	92,455	.	.	.
2010	186	93,675	.	31	.
2011	199	97,969	.	33	.
2012	109	100,490	.	46	.
2013	116	104,680	.	43	.
2014	95	107,218	18,836	46	.
2015	84	103,436	18,767	46	.
2016	86	103,233	18,428	44	.
2017	93	101,532	18,198	44	.
2018	100	102,062	.	43	.
2019	88	100,897	.	41	.
2020	91	95,361	.	45	.



**BEA EMPLOYMENT: EDUCATIONAL  
SERVICES**

U.S. Bureau of Economic Analysis,  
Regional Economic Information System  
(REIS)

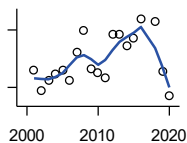
Year	County	State of Kansas	Non Metro Kansas	County Rank	Per 1000 or \$ Per Capita
2001	8	21,169	.	41	.
2002	7	22,173	.	51	.
2003	8	22,651	.	44	.
2004	8	21,601	.	47	.
2005	9	22,177	.	48	.
2006	9	22,438	.	41	.
2007	9	23,647	.	33	.
2008	8	24,653	.	43	.
2009	9	25,120	.	33	.
2010	10	26,071	.	35	.
2011	9	26,080	.	34	.
2012	8	26,625	.	43	.
2013	9	27,508	.	46	.
2014	14	28,708	.	35	.
2015	10	28,794	.	47	.
2016	11	27,996	.	36	.
2018	12	28,560	.	35	.
2019	11	29,586	.	43	.
2020	10	27,508	.	42	.



County: county value. Kansas: state value. County Rank: highest county value ranked #1. (\$000): thousands of dollars. Nonmetro Kansas: Kansas total less Metropolitan Areas as defined by the Office of Management and Budget (OMB; released 3/6/2020). Per 1000: For nonmoney amounts, Per 1000=(county value / county population for the same year as the data) x 1000. \$ Per capita=(county value / county population for the same year as the data). Value= . indicates missing or suppressed data or value not calculated.



**Employment**



**BEA EMPLOYMENT: HEALTH CARE AND SOCIAL ASSISTANCE**

U.S. Bureau of Economic Analysis, Regional Economic Information System (REIS)

Year	County	State of Kansas	Non Metro Kansas	County Rank	Per 1000 or \$ Per Capita
2001	395	165,415	.	27	.
2002	343	168,198	.	31	.
2003	367	169,654	.	30	.
2004	385	172,796	.	32	.
2005	396	173,949	.	27	.
2006	367	176,919	.	27	.
2007	441	182,160	.	26	.
2008	500	186,051	.	25	.
2009	398	188,499	.	27	.
2010	389	188,383	.	27	.
2011	375	190,736	.	28	.
2012	490	192,991	.	24	.
2013	488	193,687	.	26	.
2014	460	194,632	.	27	.
2015	477	199,724	.	25	.
2016	529	201,830	.	26	.
2018	523	204,011	.	27	.
2019	392	206,646	.	30	.
2020	327	204,942	.	29	.

**BEA EMPLOYMENT: ARTS, ENTERTAINMENT, AND RECREATION**

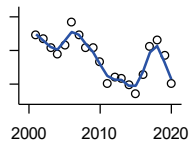
U.S. Bureau of Economic Analysis, Regional Economic Information System (REIS)

Year	County	State of Kansas	Non Metro Kansas	County Rank	Per 1000 or \$ Per Capita
2001	.	25,012	.	.	.
2002	.	25,668	.	.	.
2003	.	24,116	.	.	.
2004	.	25,355	.	.	.
2005	.	26,067	.	.	.
2006	.	26,505	.	.	.
2007	.	27,489	.	.	.
2008	.	27,501	.	.	.
2009	.	27,203	.	.	.
2010	.	27,479	.	.	.
2011	.	28,487	.	.	.
2012	.	30,729	.	.	.
2013	.	31,068	.	.	.
2014	.	32,154	.	.	.
2015	.	31,169	.	.	.
2016	.	32,373	.	.	.

County: county value. Kansas: state value. County Rank: highest county value ranked #1. (\$000): thousands of dollars. Nonmetro Kansas: Kansas total less Metropolitan Areas as defined by the Office of Management and Budget (OMB; released 3/6/2020). Per 1000: For nonmoney amounts, Per 1000=(county value / county population for the same year as the data) x 1000. \$ Per capita=(county value / county population for the same year as the data). Value= . indicates missing or suppressed data or value not calculated.

**Employment**

**BEA EMPLOYMENT: GOVERNMENT AND GOVERNMENT ENTERPRISES**



U.S. Bureau of Economic Analysis, Regional Economic Information System (REIS)

Year	County	State of Kansas	Non Metro Kansas	County Rank	Per 1000 or \$ Per Capita
2001	1,038	282,293	102,993	44	.
2002	1,034	281,427	103,581	44	.
2003	1,024	282,459	103,389	46	.
2004	1,015	283,877	103,946	46	.
2005	1,027	282,798	103,194	45	.
2006	1,054	288,372	104,103	44	.
2007	1,039	294,413	104,598	45	.
2008	1,023	298,580	104,718	46	.
2009	1,023	300,422	104,081	47	.
2010	1,006	303,875	103,382	47	.
2011	980	299,952	101,535	47	.
2012	988	298,068	101,180	46	.
2013	987	297,689	101,232	46	.
2014	979	296,956	100,634	46	.
2015	968	295,799	99,719	45	.
2016	992	291,536	98,520	44	.
2017	1,025	295,748	99,542	44	.
2018	1,033	298,105	99,499	44	.
2019	1,014	302,017	100,227	45	.
2020	980	292,583	96,477	44	.

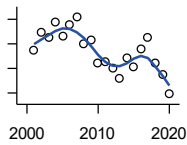
**BEA EMPLOYMENT: ACCOMMODATION AND FOOD SERVICES**

U.S. Bureau of Economic Analysis, Regional Economic Information System (REIS)

Year	County	State of Kansas	Non Metro Kansas	County Rank	Per 1000 or \$ Per Capita
2001	.	103,353	.	.	.
2002	.	103,692	.	.	.
2003	.	105,138	.	.	.
2004	.	106,694	.	.	.
2005	.	107,303	.	.	.
2006	.	109,888	.	.	.
2007	.	110,863	.	.	.
2008	.	111,092	.	.	.
2009	.	109,353	.	.	.
2010	.	108,628	.	.	.
2011	.	110,514	.	.	.
2012	.	112,574	.	.	.
2013	.	114,102	.	.	.
2014	.	115,768	.	.	.
2015	.	118,503	.	.	.
2016	.	119,764	.	.	.

County: county value. Kansas: state value. County Rank: highest county value ranked #1. (\$000): thousands of dollars. Nonmetro Kansas: Kansas total less Metropolitan Areas as defined by the Office of Management and Budget (OMB; released 3/6/2020). Per 1000: For nonmoney amounts, Per 1000=(county value / county population for the same year as the data) x 1000. \$ Per capita=(county value / county population for the same year as the data). Value= . indicates missing or suppressed data or value not calculated.

**Employment**

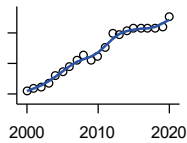


BEA EMPLOYMENT: OTHER SERVICES, EXCEPT PUBLIC ADMINISTRATION

U.S. Bureau of Economic Analysis, Regional Economic Information System (REIS)

Year	County	State of Kansas	Non Metro Kansas	County Rank	Per 1000 or \$ Per Capita
2001	255	92,176	.	51	.
2002	269	95,350	.	50	.
2003	265	95,821	32,629	51	.
2004	278	95,610	.	47	.
2005	266	95,930	32,555	49	.
2006	276	96,413	.	46	.
2007	282	98,444	.	43	.
2008	260	96,705	.	48	.
2009	263	95,534	.	44	.
2010	244	93,302	.	46	.
2011	245	94,865	.	46	.
2012	240	94,977	.	49	.
2013	232	95,471	.	53	.
2014	249	97,806	.	50	.
2015	241	98,041	.	48	.
2016	256	97,219	.	46	.
2017	265	96,568	.	42	.
2018	244	98,645	.	47	.
2019	235	98,638	.	47	.
2020	219	92,245	.	47	.

**Income**



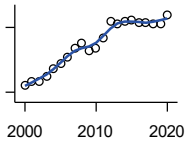
BEA PER CAPITA PERSONAL INCOME (\$)

U.S. Bureau of Economic Analysis, Regional Economic Information System (REIS)

Year	County	State of Kansas	Non Metro Kansas	County Rank	Per 1000 or \$ Per Capita
2000	21,093	28,253	23,116	90	.
2001	21,877	29,112	24,576	98	.
2002	22,350	29,248	24,314	89	.
2003	23,663	30,074	26,017	93	.
2004	26,044	30,843	26,583	64	.
2005	27,304	32,545	28,356	76	.
2006	28,912	35,690	29,782	61	.
2007	30,975	38,057	32,034	77	.
2008	32,607	41,257	35,211	85	.
2009	31,264	39,431	33,876	87	.
2010	32,240	39,960	35,795	87	.
2011	35,360	43,015	39,041	82	.
2012	39,940	45,294	39,660	59	.
2013	39,547	46,174	41,747	70	.
2014	40,536	47,013	41,042	61	.
2015	41,610	47,332	40,638	51	.
2016	41,380	47,326	40,797	54	.
2017	41,449	48,756	41,314	53	.
2018	41,460	50,811	43,283	77	.
2019	41,838	52,820	44,491	80	.
2020	45,341	55,677	48,415	82	.

County: county value. Kansas: state value. County Rank: highest county value ranked #1. (\$000): thousands of dollars. Nonmetro Kansas: Kansas total less Metropolitan Areas as defined by the Office of Management and Budget (OMB; released 3/6/2020). Per 1000: For nonmoney amounts, Per 1000=(county value / county population for the same year as the data) x 1000. \$ Per capita=(county value / county population for the same year as the data). Value= . indicates missing or suppressed data or value not calculated.

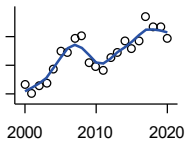
**Income**



**SOURCES OF PERSONAL INCOME:  
TOTAL PERSONAL INCOME (\$000)**

U.S. Bureau of Economic Analysis,  
Regional Economic Information System  
(REIS)

Year	County	State of Kansas	Non Metro Kansas	County Rank	Per 1000 or \$ Per Capita
2000	217,319	76,105,125	22,273,838	45	21,033.6
2001	223,497	78,664,651	23,411,174	46	21,877.2
2002	225,824	79,365,190	23,000,314	43	22,350.0
2003	238,125	81,890,340	24,494,191	45	23,663.4
2004	254,812	84,335,940	24,924,467	43	26,043.7
2005	266,812	89,346,228	26,452,291	43	27,303.7
2006	281,809	98,610,188	27,661,596	44	28,912.4
2007	303,029	105,943,199	29,715,946	43	30,975.1
2008	312,767	115,852,478	32,614,565	45	32,607.1
2009	296,540	111,697,350	31,394,702	45	31,264.1
2010	302,702	114,239,828	33,291,419	48	32,171.5
2011	326,688	123,558,772	36,221,488	49	35,363.5
2012	364,295	130,948,127	36,696,759	47	39,944.6
2013	359,602	133,979,908	38,513,959	48	39,555.8
2014	363,650	136,878,718	37,680,598	47	40,540.7
2015	368,126	138,336,768	37,081,851	45	41,619.7
2016	360,378	138,533,890	36,930,885	46	41,432.3
2017	360,899	142,729,689	37,104,963	45	41,449.3
2018	359,375	148,955,739	38,589,364	47	41,469.5
2019	357,928	154,961,001	39,424,148	47	41,985.7
2020	379,138	163,462,179	42,618,591	47	43,963.1



**SOURCES OF PERSONAL INCOME:  
WAGES AND SALARIES (\$000)**

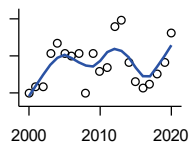
U.S. Bureau of Economic Analysis,  
Regional Economic Information System  
(REIS)

Year	County	State of Kansas	Non Metro Kansas	County Rank	Per 1000 or \$ Per Capita
2000	106,192	41,766,878	10,254,250	38	10,278.0
2001	100,556	43,269,734	10,518,206	41	9,843.0
2002	105,528	43,875,159	10,696,876	40	10,444.2
2003	107,903	44,488,560	10,894,971	40	10,722.7
2004	116,873	46,702,068	11,333,617	40	11,945.3
2005	130,253	48,537,956	11,614,130	38	13,329.2
2006	129,182	52,083,584	12,299,340	39	13,253.5
2007	138,819	55,442,368	13,093,908	38	14,189.8
2008	140,753	57,623,385	13,647,143	39	14,674.0
2009	121,670	55,605,578	13,199,674	43	12,827.6
2010	119,541	56,089,711	13,345,291	43	12,705.0
2011	115,995	58,104,706	13,856,458	43	12,556.3
2012	125,475	60,616,457	14,473,599	43	13,758.2
2013	129,387	61,872,023	14,781,792	44	14,232.4
2014	136,717	64,457,652	15,385,500	44	15,241.6
2015	131,647	66,729,598	15,454,485	44	14,883.8
2016	137,143	67,253,399	15,422,058	44	15,767.2
2017	154,038	68,830,861	15,731,853	40	17,691.3
2018	146,712	71,580,544	16,311,725	44	16,929.6
2019	146,460	74,404,771	16,882,299	44	17,180.1
2020	138,903	75,798,310	17,251,300	44	16,106.6

County: county value. Kansas: state value. County Rank: highest county value ranked #1. (\$000): thousands of dollars. Nonmetro Kansas: Kansas total less Metropolitan Areas as defined by the Office of Management and Budget (OMB; released 3/6/2020). Per 1000: For nonmoney amounts, Per 1000=(county value / county population for the same year as the data) x 1000. \$ Per capita=(county value / county population for the same year as the data). Value= . indicates missing or suppressed data or value not calculated.

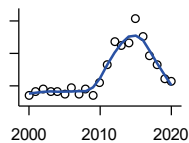
**Income**

**SOURCES OF PERSONAL INCOME:  
PROPRIETORS-FARM (\$000)**



U.S. Bureau of Economic Analysis,  
Regional Economic Information System  
(REIS)

Year	County	State of Kansas	Non Metro Kansas	County Rank	Per 1000 or \$ Per Capita
2000	-9	668,539	673,707	80	-0.9
2001	1,650	779,473	769,336	84	161.5
2002	1,695	145,064	187,033	44	167.8
2003	10,543	1,281,076	1,195,298	59	1,047.7
2004	13,439	1,149,425	938,524	32	1,373.6
2005	10,650	1,609,604	1,469,139	60	1,089.8
2006	10,087	766,047	663,735	33	1,034.9
2007	10,691	1,131,607	1,040,350	54	1,092.8
2008	-37	1,582,092	1,404,900	96	-3.9
2009	10,631	1,585,995	1,390,349	65	1,120.8
2010	5,632	2,149,482	2,029,067	79	598.6
2011	6,787	3,188,519	2,989,880	85	734.7
2012	17,796	2,519,555	2,296,875	55	1,951.3
2013	19,779	4,499,190	4,158,419	72	2,175.7
2014	8,124	2,231,181	2,157,992	66	905.7
2015	3,203	1,300,733	1,294,370	62	362.1
2016	1,282	1,577,060	1,564,511	66	147.4
2017	2,467	838,480	838,290	53	283.3
2018	5,058	1,050,662	971,690	62	583.7
2019	8,091	998,038	878,247	52	949.1
2020	16,206	2,151,349	1,887,881	68	1,879.2



**SOURCES OF PERSONAL INCOME:  
PROPRIETORS-NONFARM (\$000)**

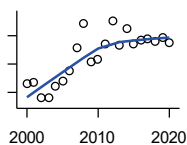
U.S. Bureau of Economic Analysis,  
Regional Economic Information System  
(REIS)

Year	County	State of Kansas	Non Metro Kansas	County Rank	Per 1000 or \$ Per Capita
2000	13,814	4,580,476	1,493,470	42	1,337.0
2001	16,829	4,510,530	1,855,621	48	1,647.3
2002	17,670	5,036,100	1,966,784	47	1,748.8
2003	16,471	4,719,377	1,916,735	48	1,636.8
2004	16,250	4,003,922	2,073,898	51	1,660.9
2005	14,927	4,455,294	2,200,971	59	1,527.5
2006	18,901	7,343,524	2,694,895	55	1,939.2
2007	15,017	7,280,197	2,436,574	61	1,535.0
2008	18,238	9,255,953	2,971,923	59	1,901.4
2009	13,873	9,323,551	2,858,848	72	1,462.6
2010	21,750	9,658,261	3,498,040	60	2,311.6
2011	33,337	12,196,566	4,186,007	53	3,608.7
2012	46,939	15,773,140	4,446,004	44	5,146.8
2013	44,527	16,441,660	4,492,127	44	4,897.9
2014	46,721	15,954,254	4,455,081	41	5,208.6
2015	61,501	15,536,116	4,386,172	33	6,953.2
2016	50,632	14,075,310	3,783,829	33	5,821.1
2017	38,722	15,371,957	3,908,254	41	4,447.2
2018	33,402	15,716,877	4,238,775	47	3,854.4
2019	24,429	16,705,488	3,921,051	60	2,865.6
2020	23,081	16,718,952	3,823,329	61	2,676.4

County: county value. Kansas: state value. County Rank: highest county value ranked #1. (\$000): thousands of dollars. Nonmetro Kansas: Kansas total less Metropolitan Areas as defined by the Office of Management and Budget (OMB; released 3/6/2020). Per 1000: For nonmoney amounts, Per 1000=(county value / county population for the same year as the data) x 1000. \$ Per capita=(county value / county population for the same year as the data). Value= . indicates missing or suppressed data or value not calculated.

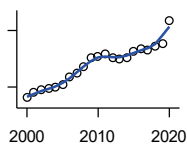
**Income**

**SOURCES OF PERSONAL INCOME:  
DIVIDENDS,INTEREST,RENT(\$000)**



U.S. Bureau of Economic Analysis,  
Regional Economic Information System  
(REIS)

Year	County	State of Kansas	Non Metro Kansas	County Rank	Per 1000 or \$ Per Capita
2000	42,921	15,916,201	4,736,921	49	4,154.2
2001	43,533	15,770,830	4,699,417	49	4,261.3
2002	38,178	15,111,563	4,316,887	50	3,778.5
2003	37,944	15,370,764	4,360,311	54	3,770.6
2004	42,035	15,820,469	4,251,925	45	4,296.3
2005	44,099	17,147,069	4,485,387	45	4,512.8
2006	47,550	20,117,848	4,945,184	45	4,878.4
2007	55,926	22,269,186	5,526,219	44	5,716.7
2008	64,270	24,972,485	6,180,979	45	6,700.4
2009	50,960	21,453,879	5,308,474	47	5,372.7
2010	51,457	20,861,351	5,414,285	46	5,468.9
2011	56,894	23,387,567	5,781,075	46	6,158.7
2012	65,246	25,689,368	6,389,505	46	7,154.2
2013	56,408	24,832,212	5,984,811	47	6,204.8
2014	62,708	27,412,684	6,403,356	47	6,990.9
2015	57,107	27,244,414	6,423,685	51	6,456.4
2016	58,661	27,293,441	6,389,161	49	6,744.2
2017	58,880	28,385,472	6,700,156	49	6,762.4
2018	57,846	29,953,419	6,772,504	50	6,675.1
2019	59,206	30,820,276	6,957,987	50	6,945.0
2020	57,736	30,283,520	6,844,745	52	6,694.8



**SOURCES OF PERSONAL INCOME:  
TRANSFER PAYMENTS (\$000)**

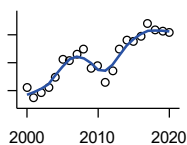
U.S. Bureau of Economic Analysis,  
Regional Economic Information System  
(REIS)

Year	County	State of Kansas	Non Metro Kansas	County Rank	Per 1000 or \$ Per Capita
2000	48,472	9,650,835	4,036,781	40	4,691.4
2001	54,046	10,549,124	4,355,457	39	5,290.3
2002	56,475	11,208,997	4,553,978	37	5,589.4
2003	58,121	11,709,049	4,702,911	38	5,775.7
2004	59,195	12,040,452	4,802,536	39	6,050.2
2005	62,479	12,696,735	5,059,314	39	6,393.7
2006	70,295	13,642,787	5,455,207	38	7,212.0
2007	74,341	14,686,821	5,775,024	38	7,599.0
2008	81,264	16,552,460	6,322,722	38	8,472.1
2009	91,364	18,025,603	6,790,962	38	9,632.5
2010	92,359	19,189,749	7,089,258	38	9,816.0
2011	94,718	19,625,770	7,255,825	38	10,253.1
2012	91,092	19,354,458	7,148,177	38	9,988.2
2013	89,318	19,639,358	7,185,636	38	9,824.9
2014	91,130	20,380,970	7,399,809	38	10,159.4
2015	98,166	21,116,856	7,623,577	38	11,098.5
2016	100,181	21,884,629	7,886,000	38	11,517.7
2017	99,788	22,559,744	8,062,517	38	11,460.7
2018	103,285	23,628,033	8,393,617	38	11,918.4
2019	106,459	25,050,174	8,845,371	39	12,487.9
2020	130,573	32,319,421	11,074,190	40	15,140.7

County: county value. Kansas: state value. County Rank: highest county value ranked #1. (\$000): thousands of dollars. Nonmetro Kansas: Kansas total less Metropolitan Areas as defined by the Office of Management and Budget (OMB; released 3/6/2020). Per 1000: For nonmoney amounts, Per 1000=(county value / county population for the same year as the data) x 1000. \$ Per capita=(county value / county population for the same year as the data). Value= . indicates missing or suppressed data or value not calculated.

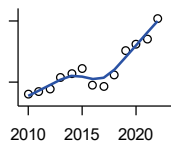
**Income**

**SOURCES OF PERSONAL INCOME:  
LESS SOCIAL INSURANCE (\$000)**



U.S. Bureau of Economic Analysis,  
Regional Economic Information System  
(REIS)

Year	County	State of Kansas	Non Metro Kansas	County Rank	Per 1000 or \$ Per Capita
2000	18,387	6,655,813	1,663,044	36	1,779.6
2001	16,909	6,869,934	1,740,915	40	1,655.1
2002	17,764	7,008,361	1,778,636	40	1,758.1
2003	18,431	7,172,781	1,821,858	40	1,831.6
2004	19,921	7,556,560	1,904,014	40	2,036.1
2005	22,493	7,911,241	1,986,907	37	2,301.8
2006	22,223	8,406,937	2,090,313	39	2,280.0
2007	23,286	8,806,941	2,180,587	38	2,380.3
2008	23,875	9,207,010	2,299,399	38	2,489.1
2009	21,107	9,002,859	2,248,703	43	2,225.3
2010	21,509	9,235,760	2,321,191	43	2,286.0
2011	19,144	8,515,986	2,139,991	45	2,072.3
2012	20,769	8,816,128	2,195,919	43	2,277.3
2013	23,982	10,225,399	2,540,439	42	2,638.0
2014	25,147	10,609,601	2,635,009	41	2,803.5
2015	25,047	11,028,204	2,663,038	43	2,831.8
2016	25,764	10,915,915	2,604,579	41	2,962.1
2017	27,676	11,224,218	2,669,954	40	3,178.6
2018	26,767	11,749,229	2,797,106	43	3,088.7
2019	26,494	12,245,451	2,889,336	43	3,107.8
2020	26,278	12,715,152	3,027,656	46	3,047.1



**HUD MEDIAN FAMILY INCOME**

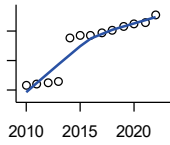
U.S. Department of Housing and Urban  
Development (HUD)

Year	County	State of Kansas	Non Metro Kansas	County Rank	Per 1000 or \$ Per Capita
2010	47,000	63,100	.	97	.
2011	47,800	64,300	.	95	.
2012	48,400	65,200	.	95	.
2013	51,200	64,800	.	87	.
2014	52,200	64,400	.	86	.
2015	53,200	66,300	.	87	.
2016	49,400	66,700	.	99	.
2017	48,900	68,500	.	104	.
2018	51,700	73,100	.	101	.
2019	57,800	75,200	.	87	.
2020	59,300	76,500	.	91	.
2021	60,600	77,400	.	84	.
2022	65,600	87,800	.	80	.

County: county value. Kansas: state value. County Rank: highest county value ranked #1. (\$000): thousands of dollars. Nonmetro Kansas: Kansas total less Metropolitan Areas as defined by the Office of Management and Budget (OMB; released 3/6/2020). Per 1000: For nonmoney amounts, Per 1000=(county value / county population for the same year as the data) x 1000. \$ Per capita=(county value / county population for the same year as the data). Value= . indicates missing or suppressed data or value not calculated.

**Income**

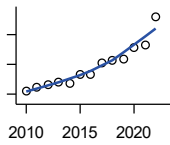
**HUD 30% LOW-TO-MEDIUM INCOME (LMI) LIMIT - 4 PERSONS**



U.S. Department of Housing and Urban Development (HUD)

Year	County	State of Kansas	Non Metro Kansas	County Rank	Per 1000 or \$ Per Capita
2010	15,850	.	.	105	.
2011	16,100	.	.	105	.
2012	16,300	.	.	105	.
2013	16,550	.	.	105	.
2014	23,850	.	.	105	.
2015	24,250	.	.	105	.
2016	24,300	.	.	105	.
2017	24,600	.	.	105	.
2018	25,100	21,950	.	105	.
2019	25,750	22,550	.	105	.
2020	26,200	22,950	.	105	.
2021	26,500	23,200	.	105	.
2022	27,750	25,950	.	105	.

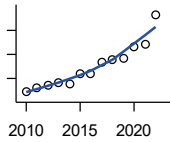
**HUD 50% LOW-TO-MEDIUM INCOME (LMI) LIMIT - 4 PERSONS**



U.S. Department of Housing and Urban Development (HUD)

Year	County	State of Kansas	Non Metro Kansas	County Rank	Per 1000 or \$ Per Capita
2010	26,400	.	.	105	.
2011	26,850	.	.	105	.
2012	27,200	.	.	105	.
2013	27,600	.	.	105	.
2014	27,400	.	.	105	.
2015	28,700	.	.	105	.
2016	28,650	.	.	105	.
2017	30,150	.	.	105	.
2018	30,550	36,550	.	105	.
2019	30,750	37,600	.	105	.
2020	32,300	38,250	.	104	.
2021	32,550	38,700	.	105	.
2022	36,400	43,300	.	105	.

**HUD 80% LOW-TO-MEDIUM INCOME (LMI) LIMIT - 4 PERSONS**



U.S. Department of Housing and Urban Development (HUD)

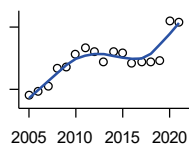
Year	County	State of Kansas	Non Metro Kansas	County Rank	Per 1000 or \$ Per Capita
2010	42,250	.	.	105	.
2011	42,950	.	.	105	.
2012	43,500	.	.	105	.
2013	44,150	.	.	105	.
2014	43,850	.	.	105	.
2015	45,900	.	.	105	.
2016	45,850	.	.	105	.
2017	48,250	.	.	105	.
2018	48,900	58,500	.	105	.
2019	49,200	60,150	.	105	.
2020	51,700	61,200	.	104	.
2021	52,100	61,900	.	105	.
2022	58,250	69,250	.	105	.

County: county value. Kansas: state value. County Rank: highest county value ranked #1. (\$000): thousands of dollars. Nonmetro Kansas: Kansas total less Metropolitan Areas as defined by the Office of Management and Budget (OMB; released 3/6/2020). Per 1000: For nonmoney amounts, Per 1000=(county value / county population for the same year as the data) x 1000. \$ Per capita=(county value / county population for the same year as the data). Value= . indicates missing or suppressed data or value not calculated.



**Banking**

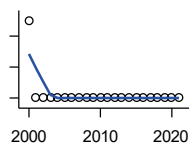
**BANK DEPOSITS** (1984-2004 in thousands; 2005- in millions)



Federal Deposit Insurance Corporation, Data Book, Operating Banks and Branches

Year	County	State of Kansas	Non Metro Kansas	County Rank	Per 1000 or \$ Per Capita
2005	194	48,304	17,000	41	19.9
2006	198	50,668	17,586	42	20.3
2007	203	54,057	18,517	43	20.8
2008	220	57,869	19,628	42	22.9
2009	222	57,763	20,031	41	23.4
2010	234	60,031	20,678	42	24.9
2011	240	61,094	21,347	42	26.0
2012	236	62,910	22,481	45	25.9
2013	227	64,547	22,795	49	25.0
2014	236	66,538	23,338	48	26.3
2015	235	68,160	23,367	49	26.6
2016	225	70,381	23,420	49	25.9
2017	227	73,329	23,928	50	26.1
2018	226	74,623	24,100	50	26.1
2019	228	76,436	24,488	51	26.7
2020	266	88,563	27,547	47	30.8
2021	265	97,055	30,122	52	31.1

**NUMBER OF BANKS**



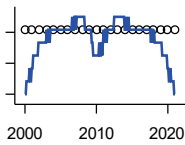
Federal Deposit Insurance Corporation, Data Book, Operating Banks and Branches

Year	County	State of Kansas	Non Metro Kansas	County Rank	Per 1000 or \$ Per Capita
2000	6	410	145	54	.
2001	5	410	136	66	.
2002	5	404	129	65	.
2003	5	397	121	63	.
2004	5	394	112	62	.
2005	5	388	101	60	.
2006	5	385	94	60	.
2007	5	382	91	60	.
2008	5	378	82	60	.
2009	5	374	79	60	.
2010	5	367	70	59	.
2011	5	359	61	59	.
2012	5	348	57	58	.
2013	5	332	45	58	.
2014	5	329	41	58	.
2015	5	320	31	55	.
2016	5	314	24	55	.
2017	5	301	13	55	.
2018	5	289	7	55	.
2019	5	279	3	55	.
2020	5	271	-1	55	.
2021	5	270	-6	55	.

County: county value. Kansas: state value. County Rank: highest county value ranked #1. (\$000): thousands of dollars. Nonmetro Kansas: Kansas total less Metropolitan Areas as defined by the Office of Management and Budget (OMB; released 3/6/2020). Per 1000: For nonmoney amounts, Per 1000=(county value / county population for the same year as the data) x 1000. \$ Per capita=(county value / county population for the same year as the data). Value= . indicates missing or suppressed data or value not calculated.

**Banking**

**NUMBER OF BANKING OFFICES**

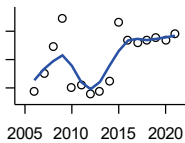


Federal Deposit Insurance Corporation, Data Book, Operating Banks and Branches

Year	County	State of Kansas	Non Metro Kansas	County Rank	Per 1000 or \$ Per Capita
2000	6	1,398	703	68	.
2001	6	1,424	708	68	.
2002	6	1,447	704	67	.
2003	6	1,461	708	67	.
2004	6	1,485	708	68	.
2005	6	1,505	711	67	.
2006	6	1,518	711	66	.
2007	6	1,543	717	66	.
2008	6	1,556	717	66	.
2009	6	1,569	716	66	.
2010	6	1,561	710	66	.
2011	6	1,559	707	66	.
2012	6	1,533	702	66	.
2013	6	1,518	696	66	.
2014	6	1,491	685	67	.
2015	6	1,472	675	67	.
2016	6	1,465	668	66	.
2017	6	1,452	666	66	.
2018	6	1,439	660	66	.
2019	6	1,439	663	64	.
2020	6	1,416	653	63	.
2021	6	1,392	641	62	.

**Government**

**TANGIBLE ASSESSED VALUATION (KDoR, million\$; 2006-)**



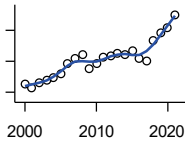
Kansas Department of Revenue, Division of Property Valuation, Statistical Report of Property Assessment and Taxation

Year	County	State of Kansas	Non Metro Kansas	County Rank	Per 1000 or \$ Per Capita
2006	79.0	28,964.3	10,316.9	55	8.1
2007	85.2	30,086.9	10,335.9	54	8.7
2008	94.8	31,000.3	10,856.9	51	9.9
2009	104.6	30,312.3	10,555.6	46	11.0
2010	80.1	29,450.2	10,158.7	59	8.5
2011	80.9	29,963.6	10,572.3	62	8.8
2012	77.7	30,382.9	10,876.2	65	8.5
2013	79.0	30,850.2	11,044.4	66	8.7
2014	82.3	31,783.0	11,388.9	66	9.2
2015	103.0	32,335.7	11,037.8	54	11.6
2016	96.8	33,156.3	10,889.6	54	11.1
2017	96.1	34,754.5	11,439.0	60	11.0
2018	96.7	36,566.1	11,907.1	61	11.2
2019	97.8	38,255.2	12,336.7	62	11.5
2020	96.7	39,333.9	12,219.3	57	11.2
2021	99.1	40,812.0	12,601.5	57	11.6

County: county value. Kansas: state value. County Rank: highest county value ranked #1. (\$000): thousands of dollars. Nonmetro Kansas: Kansas total less Metropolitan Areas as defined by the Office of Management and Budget (OMB; released 3/6/2020). Per 1000: For nonmoney amounts, Per 1000=(county value / county population for the same year as the data) x 1000. \$ Per capita=(county value / county population for the same year as the data). Value= . indicates missing or suppressed data or value not calculated.

**Government**

**SALES TAX COLLECTIONS (\$)**

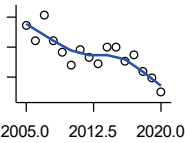


Kansas Department of Revenue. Use tax collections included beginning in calendar year 2018.

Year	County	State of Kansas	Non Metro Kansas	County Rank	Per 1000 or \$ Per Capita
2000	2,568,295	1,475,831,808	432,761,608	51	248,576.8
2001	2,295,314	1,481,026,688	426,316,284	53	224,678.3
2002	2,576,353	1,561,316,864	443,986,950	52	254,983.5
2003	2,766,475	1,626,782,976	461,658,700	52	274,915.5
2004	2,913,254	1,691,899,008	480,309,725	51	297,757.0
2005	3,196,907	1,744,980,352	497,494,867	51	327,149.7
2006	3,819,373	1,851,694,720	532,233,047	48	391,851.1
2007	4,198,251	1,917,546,752	559,319,583	46	429,137.3
2008	4,388,506	1,990,655,744	589,725,773	45	457,517.3
2009	3,514,564	1,866,223,078	548,627,132	51	370,539.2
2010	3,866,409	2,075,193,413	617,409,982	53	410,926.7
2011	4,283,955	2,347,193,367	702,671,534	55	463,731.9
2012	4,313,170	2,456,292,294	740,196,106	59	472,935.3
2013	4,512,835	2,489,204,048	746,226,565	59	496,406.9
2014	4,418,437	2,539,886,774	760,474,019	60	492,579.4
2015	4,651,880	2,642,374,740	750,090,163	54	525,933.3
2016	4,219,029	2,732,611,350	749,030,133	56	485,057.4
2017	4,001,653	2,726,104,521	744,246,491	57	459,590.3
2018	5,333,249	3,277,299,125	893,564,480	56	615,422.2
2019	5,861,809	3,395,631,405	939,607,762	55	687,602.2
2020	6,151,484	3,489,306,791	984,218,931	54	713,298.2
2021	6,969,360	3,981,293,227	1,098,391,422	53	817,424.3

**Crime**

**CRIME INDEX OFFENSES**



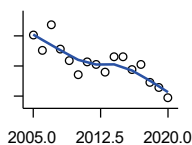
Kansas Bureau of Investigation, Note: Data are aggregated from reports by individual police departments and subject to be incomplete.

Year	County	State of Kansas	Non Metro Kansas	County Rank	Per 1000 or \$ Per Capita
2005	273	111,856	31,630	36	27.9
2006	223	110,032	.	37	22.9
2007	307	111,035	29,921	35	31.4
2008	222	93,996	27,342	37	23.1
2009	185	98,757	27,620	42	19.5
2010	141	98,354	26,909	46	15.0
2011	192	96,638	25,765	40	20.8
2012	164	98,914	26,963	46	18.0
2013	145	93,054	24,488	45	15.9
2014	202	86,323	23,341	38	22.5
2015	198	88,590	21,580	39	22.4
2016	152	90,589	21,565	41	17.5
2017	176	93,091	22,622	40	20.2
2018	120	92,062	20,325	47	13.8
2019	96	87,008	18,547	50	11.3
2020	49	87,346	17,762	67	5.7

County: county value. Kansas: state value. County Rank: highest county value ranked #1. (\$000): thousands of dollars. Nonmetro Kansas: Kansas total less Metropolitan Areas as defined by the Office of Management and Budget (OMB; released 3/6/2020). Per 1000: For nonmoney amounts, Per 1000=(county value / county population for the same year as the data) x 1000. \$ Per capita=(county value / county population for the same year as the data). Value= . indicates missing or suppressed data or value not calculated.

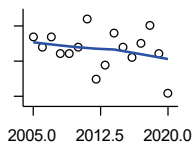
**Crime**

**PROPERTY CRIMES**



Kansas Bureau of Investigation, Note: Data are aggregated from reports by individual police departments and subject to be incomplete.

Year	County	State of Kansas	Non Metro Kansas	County Rank	Per 1000 or \$ Per Capita
2005	251	101,414	29,042	36	25.7
2006	204	99,110	.	36	20.9
2007	285	99,632	26,856	35	29.1
2008	205	83,964	24,367	37	21.4
2009	168	87,658	24,825	41	17.7
2010	122	87,926	24,133	47	13.0
2011	165	86,547	23,274	40	17.9
2012	154	88,707	24,220	43	16.9
2013	131	83,551	22,028	44	14.4
2014	179	76,794	20,858	38	20.0
2015	179	77,997	19,138	39	20.2
2016	136	79,549	19,207	41	15.6
2017	156	81,349	19,981	40	17.9
2018	95	79,695	17,769	50	11.0
2019	79	74,314	15,892	51	9.3
2020	43	73,450	15,100	66	5.0



**VIOLENT CRIMES**

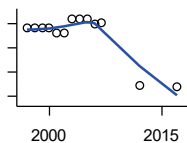
Kansas Bureau of Investigation, Note: Data are aggregated from reports by individual police departments and subject to be incomplete.

Year	County	State of Kansas	Non Metro Kansas	County Rank	Per 1000 or \$ Per Capita
2005	22	10,442	2,588	40	2.3
2006	19	10,922	.	42	1.9
2007	22	11,403	3,065	43	2.2
2008	17	10,032	2,975	52	1.8
2009	17	11,099	2,795	48	1.8
2010	19	10,428	2,776	44	2.0
2011	27	10,091	2,491	36	2.9
2012	10	10,207	2,743	62	1.1
2013	14	9,503	2,460	53	1.5
2014	23	9,529	2,483	39	2.6
2015	19	10,593	2,442	42	2.1
2016	16	11,040	2,358	41	1.8
2017	20	11,742	2,641	41	2.3
2018	25	12,367	2,556	40	2.9
2019	17	12,694	2,655	48	2.0
2020	6	13,896	2,662	79	0.7

County: county value. Kansas: state value. County Rank: highest county value ranked #1. (\$000): thousands of dollars. Nonmetro Kansas: Kansas total less Metropolitan Areas as defined by the Office of Management and Budget (OMB; released 3/6/2020). Per 1000: For nonmoney amounts, Per 1000=(county value / county population for the same year as the data) x 1000. \$ Per capita=(county value / county population for the same year as the data). Value= . indicates missing or suppressed data or value not calculated.

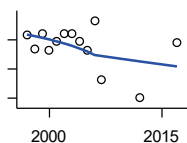
**Agriculture**

**NUMBER OF FARMS**



Kansas Agricultural Statistics, Kansas Farm Facts

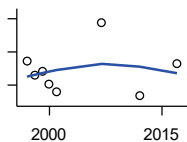
Year	County	State of Kansas	Non Metro Kansas	County Rank	Per 1000 or \$ Per Capita
1997	540	64,000	47,900	53	51.9
1998	540	65,000	48,850	53	52.0
1999	540	65,000	48,850	53	51.9
2000	540	64,000	48,030	51	52.3
2001	530	63,000	47,200	51	51.9
2002	530	63,000	47,200	51	52.5
2003	560	64,500	48,150	49	55.6
2004	560	64,500	48,150	49	57.2
2005	560	64,500	48,150	49	57.3
2006	550	64,000	47,650	49	56.4
2007	553	65,531	48,179	47	56.5
2012	423	61,773	45,655	66	46.4
2017	420	58,569	42,404	61	48.2



**TOTAL ACRES HARVESTED**

Kansas Agricultural Statistics, Kansas Farm Facts

Year	County	State of Kansas	Non Metro Kansas	County Rank	Per 1000 or \$ Per Capita
1997	173,300	22,846,000	19,430,580	71	16,668.3
1998	163,730	22,143,500	18,943,650	71	15,773.6
1999	174,260	21,708,900	18,581,750	65	16,746.1
2000	163,050	21,639,000	18,528,870	70	15,781.1
2001	168,750	21,847,900	18,689,750	69	16,518.2
2002	174,010	20,230,400	17,089,120	54	17,221.9
2003	174,000	21,827,700	18,661,920	66	17,291.1
2004	169,200	20,876,900	17,721,500	59	17,293.5
2005	162,500	21,936,500	18,807,930	73	16,629.1
2006	183,100	21,412,700	18,291,120	58	18,785.3
2007	142,719	19,886,655	17,164,743	72	14,588.5
2012	130,682	21,043,596	17,966,843	86	14,329.2
2017	168,052	21,837,465	18,543,057	67	19,300.8



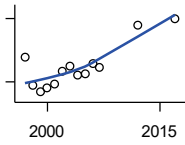
**VALUE: LIVESTOCK AND POULTRY (\$000)**

Kansas Agricultural Statistics, Kansas Farm Facts

Year	County	State of Kansas	Non Metro Kansas	County Rank	Per 1000 or \$ Per Capita
1997	12,893	2,806,445	2,500,305	80	1,240.1
1998	11,167	2,670,432	2,378,007	87	1,075.8
1999	11,698	2,849,061	2,554,528	85	1,124.2
2000	10,176	2,901,469	2,609,032	98	984.9
2001	9,141	2,693,274	2,437,187	93	894.8
2007	17,494	9,525,971	.	86	1,788.2
2012	8,668	11,476,571	10,883,216	99	950.4
2017	12,581	12,322,289	.	100	1,444.9

County: county value. Kansas: state value. County Rank: highest county value ranked #1. (\$000): thousands of dollars. Nonmetro Kansas: Kansas total less Metropolitan Areas as defined by the Office of Management and Budget (OMB; released 3/6/2020). Per 1000: For nonmoney amounts, Per 1000=(county value / county population for the same year as the data) x 1000. \$ Per capita=(county value / county population for the same year as the data). Value= . indicates missing or suppressed data or value not calculated.

**Agriculture**



VALUE:FIELD CROPS (\$000)  
EXCLUDING GOVERNMENT  
PROGRAM PAYMENTS

Kansas Agricultural Statistics, Kansas  
Farm Facts

Year	County	State of Kansas	Non Metro Kansas	County Rank	Per 1000 or \$ Per Capita
1997	31,629	4,474,942	3,800,365	68	3,042.1
1998	18,541	3,594,319	3,124,409	88	1,786.2
1999	15,097	3,118,193	2,728,319	85	1,450.8
2000	17,071	2,915,660	2,540,052	78	1,652.2
2001	18,962	3,283,117	2,857,136	85	1,856.1
2002	25,288	3,011,855	2,560,580	50	2,502.8
2003	27,253	3,623,255	3,150,629	59	2,708.2
2004	23,292	3,445,688	2,896,603	65	2,380.6
2005	23,578	3,678,123	3,182,677	72	2,412.8
2006	28,449	4,308,716	3,684,132	67	2,918.7
2007	26,882	4,887,212	.	76	2,747.8
2012	46,754	6,983,993	6,044,551	67	5,126.5
2017	49,704	6,460,437	.	62	5,708.5

County: county value. Kansas: state value. County Rank: highest county value ranked #1. (\$000): thousands of dollars. Nonmetro Kansas: Kansas total less Metropolitan Areas as defined by the Office of Management and Budget (OMB; released 3/6/2020). Per 1000: For nonmoney amounts, Per 1000=(county value / county population for the same year as the data) x 1000. \$ Per capita=(county value / county population for the same year as the data). Value= . indicates missing or suppressed data or value not calculated.