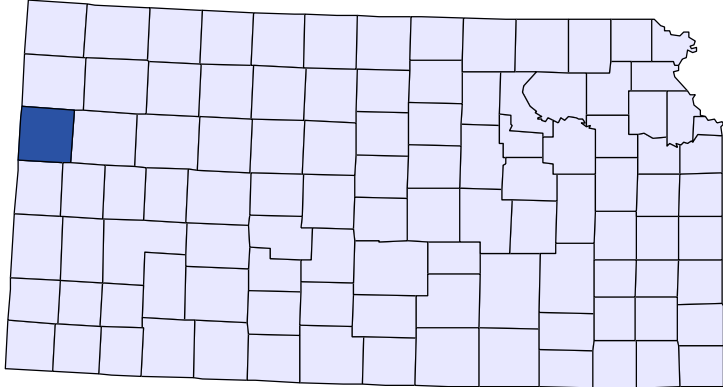




Kansas County Profiles

Wallace County



The University
of Kansas

Institute for Policy
& Social Research

KU INSTITUTE FOR POLICY
& SOCIAL RESEARCH

The University of Kansas

1541 Lilac Lane, Rm. 607
Blake Hall
Lawrence, KS 66045-3129

Foreword

The Kansas County Profile Report is published by the Institute for Policy & Social Research (IPSR) at the University of Kansas with support from the KU University Center project.* Special thanks to Xanthippe Wedel, senior research data engineer, who compiles and updates the county profiles and Genna Hurd, associate researcher, who provides editorial review.

County reports can be generated for any county in Kansas by simply clicking on the county from the web site:

<https://ipsr.ku.edu/ksdata/kcced/profiles/>

The Kansas County Profile Report contains 12 categories of information: Population, Vital Statistics and Health, Housing, Education, Social Environment, Business, Employment, Income, Banking, Government, Crime, and Agriculture. For more information about Kansas, please refer to the Kansas Statistical Abstract, available online at:

<https://ipsr.ku.edu/ksdata/ksah/>

We are always looking for ways to improve the Kansas County Profile Report and we welcome your suggestions and comments. Please address any correspondence to the Institute for Policy & Social Research, The University of Kansas, 607 Blake Hall, 1541 Lilac Lane, Lawrence, Kansas 66045-3129, e-mail ipsr@ku.edu or call 785-864-3701.

**The KU University Center is a collaborative effort led by the Institute for Policy & Social Research at the University of Kansas. This project is supported by the Economic Development Administration, U.S. Department of Commerce, through its University Center Program.*

The mission of EDA is to lead the federal economic development agenda by promoting innovation and competitiveness, preparing American regions for growth and success in the worldwide economy.

Kansas County Profiles Table of Contents

Population

Total Population (Decennial Census)	1
Estimated Population (Current Population Reports)	2
Urban Population	2
Rural Population	3
Net Migration (Decade Ending...)	3
Median Age	3

Population (Age Groups)

Population Under 18 (Decennial Census)	3
Population Age 18 and Over (Decennial Census)	4
Population Age 65 and Over (Decennial Census)	4
Population Age 85 and Over (Decennial Census)	4

Vital Statistics and Health

Live Births	5
Deaths	5
Marriages	6
Divorces and Annulments	6
Physicians: M.D. Physicians	7
Physicians: D.O. Physicians	7
Dentists	8
Number of Hospitals	8
Number of Hospital Beds	9

Housing

Housing Units (Decennial Census)	9
Housing Units (Estimated)	10
Occupied Housing Units	10
Owner Occupied Housing Units	10
Renter Occupied Housing Units	11
Vacant Housing Units	11
Median Value (\$): Owner Occupied Housing Units	11
Median Contract Rent (\$)	12
Fair Market Rent: 2 Bedrooms	12

Education

Population Age 25 and Over	13
Percent of Population 25+ with High School or Higher Education	13
Percent of Population 25+ with Bachelors Degree or Higher Education	14
Public School Enrollment (FTE- School Year Beginning...)	14
Pupil/Teacher Ratio (School Year Beginning...)	15

Kansas County Profiles Table of Contents

Social Environment

Total Child Care Facilities	15
Preschools	16
Food Stamp Beneficiaries	16
Percent of Population Receiving Food Stamps	17
Estimated Number of People in Poverty	17
Estimated Percent of People in Poverty	18
Estimated Number of Related Children Age 5 to 17 in Families in Poverty	18
Estimated Percent of Related Children Age 5 to 17 in Families in Poverty	19
Estimated Number Under 18 in Poverty	19
Estimated Percent Under 18 in Poverty	20

Business

Establishments: Total	21
Establishments: 1-19 Employees	22
Establishments: 20-99 Employees	22
Establishments: 100-499 Employees	23
Establishments: 500 or More Employees	23
Establishments: Forestry, Fishing, Hunting, and Ag Support	24
Establishments: Mining	24
Establishments: Utilities	25
Establishments: Construction	25
Establishments: Manufacturing	26
Establishments: Wholesale Trade	26
Establishments: Retail Trade	27
Establishments: Transportation and Warehousing	27
Establishments: Information	28
Establishments: Finance and Insurance	28
Establishments: Real Estate, Rental, and Leasing	29
Establishments: Professional, Scientific, and Technical Services	29
Establishments: Management of Companies and Enterprises	30
Establishments: Admin, Support, Waste Management, and Remediation	30
Establishments: Educational Services	31
Establishments: Health Care and Social Assistance	31
Establishments: Arts, Entertainment, and Recreation	32
Establishments: Accommodation and Food Services	32
Establishments: Other Services	33

Kansas County Profiles Table of Contents

Business	
Total Annual Payroll (\$000)	34
Total Annual Payroll (\$000): Forestry, Fishing, Hunting, and Ag Support	35
Total Annual Payroll (\$000): Mining	35
Total Annual Payroll (\$000): Utilities	36
Total Annual Payroll (\$000): Construction	36
Total Annual Payroll (\$000): Manufacturing	37
Total Annual Payroll (\$000): Wholesale Trade	37
Total Annual Payroll (\$000): Retail Trade	38
Total Annual Payroll (\$000): Transportation and Warehousing	38
Total Annual Payroll (\$000): Information	39
Total Annual Payroll (\$000): Finance and Insurance	39
Total Annual Payroll (\$000): Real Estate, Rental, and Leasing	40
Total Annual Payroll (\$000): Professional, Scientific, and Technical Services	40
Total Annual Payroll (\$000): Management of Companies and Enterprises	41
Total Annual Payroll (\$000): Admin, Support, Waste Management, and Remediation	41
Total Annual Payroll (\$000): Educational Services	42
Total Annual Payroll (\$000): Health Care and Social Assistance	42
Total Annual Payroll (\$000): Arts, Entertainment, and Recreation	43
Total Annual Payroll (\$000): Accommodation and Food Services	43
Total Annual Payroll (\$000): Other Services	44
Nominal Taxable Retail Sales (Million\$)	44
Retail Pull Factor	45
Employment	
Civilian Labor Force (BLS - Place of Residence)	46
Employed (BLS - Place of Residence)	47
Unemployed (BLS - Place of Residence)	48
Unemployment Rate (BLS - Place of Residence)	49
BEA Employment: Total (Place of Work)	49
BEA Employment: Farm	50
BEA Employment: Non-Farm	50
Average Wage per Job (\$)	51
BEA Employment: Forestry, Fishing, Hunting, and Ag Support	51
BEA Employment: Mining	52
BEA Employment: Utilities	52
BEA Employment: Construction	53
BEA Employment: Manufacturing	53
BEA Employment: Wholesale Trade	54
BEA Employment: Retail Trade	54
BEA Employment: Transportation and Warehousing	55
BEA Employment: Information	55
BEA Employment: Finance and Insurance	56
BEA Employment: Real Estate, Rental, and Leasing	56
BEA Employment: Professional and Technical Services	57
BEA Employment: Management of Companies and Enterprises	57
BEA Employment: Administrative and Waste Services	58
BEA Employment: Educational Services	58
BEA Employment: Health Care and Social Assistance	59
BEA Employment: Arts, Entertainment, and Recreation	59
BEA Employment: Government and Government Enterprises	60
BEA Employment: Accommodation and Food Services	60
BEA Employment: Other Services, Except Public Administration	61

Kansas County Profiles Table of Contents

Income

BEA Per Capita Personal Income (\$)	61
Sources of Personal Income: Total Personal Income (\$000)	62
Sources of Personal Income: Wages And Salaries (\$000)	62
Sources of Personal Income: Proprietors-Farm (\$000)	63
Sources of Personal Income: Proprietors-Nonfarm (\$000)	63
Sources of Personal Income: Dividends, Interest, Rent (\$000)	64
Sources of Personal Income: Transfer Payments (\$000)	64
Sources of Personal Income: Less Social Insurance (\$000)	65
HUD Median Family Income	65
HUD 30% Low-To-Medium Income (LMI) Limit - 4 Persons	66
HUD 50% Low-To-Medium Income (LMI) Limit - 4 Persons	66
HUD 80% Low-To-Medium Income (LMI) Limit - 4 Persons	66

Banking

Bank Deposits (\$000)	67
Number of Banks	67
Number of Banking Offices	68

Government

Tangible Assessed Valuation (million\$)	68
Sales Tax Collections	69

Crime

Crime Index Offenses	69
Property Crimes	70
Violent Crimes	70

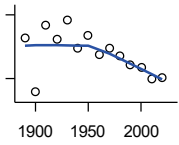
Agriculture

Number of Farms	71
Total Acres Harvested	71
Value: Livestock and Poultry (\$000)	71
Value: Field Crops (\$000) Excluding Government Program Payments	72

Population

DECENNIAL CENSUS:TOTAL POPULATION

U.S. Census Bureau: Decennial Census

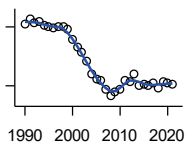


Year	County	State of Kansas	Non Metro Kansas	County Rank	Per 1000 or \$ Per Capita
1890	2,468	1,427,096	968,413	90	.
1900	1,178	1,470,495	981,206	96	.
1910	2,759	1,690,949	1,138,294	97	.
1920	2,424	1,769,257	1,153,525	100	.
1930	2,882	1,880,999	1,180,056	101	.
1940	2,216	1,801,028	1,097,216	99	.
1950	2,508	1,905,299	1,046,823	103	.
1960	2,069	2,178,611	1,021,510	105	.
1970	2,215	2,246,578	958,104	104	.
1980	2,045	2,363,679	980,085	104	.
1990	1,821	2,477,574	939,416	104	.
2000	1,749	2,688,418	959,507	104	.
2010	1,485	2,853,118	929,981	104	.
2020	1,512	2,937,880	892,006	104	.

County: county value. Kansas: state value. County Rank: highest county value ranked #1. (\$000): thousands of dollars. Nonmetro Kansas: Kansas total less Metropolitan Areas as defined by the Office of Management and Budget (OMB; released 3/6/2020). Per 1000: For nonmoney amounts, Per 1000=(county value / county population for the same year as the data) x 1000. \$ Per capita=(county value / county population for the same year as the data). Value= . indicates missing or suppressed data or value not calculated.

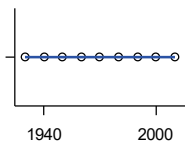
Population

ESTIMATED POPULATION



U.S. Census Bureau

Year	County	State of Kansas	Non Metro Kansas	County Rank	Per 1000 or \$ Per Capita
1990	1,813	2,481,349	938,607	104	.
1991	1,841	2,498,722	938,965	104	.
1992	1,823	2,532,394	942,759	104	.
1993	1,825	2,556,547	947,515	104	.
1994	1,811	2,580,513	952,178	104	.
1995	1,799	2,601,007	957,771	104	.
1996	1,798	2,614,554	959,455	104	.
1997	1,804	2,635,292	960,225	104	.
1998	1,801	2,660,598	960,569	104	.
1999	1,787	2,678,338	960,704	104	.
2000	1,733	2,693,681	959,230	104	.
2001	1,695	2,702,162	952,607	104	.
2002	1,671	2,713,535	945,985	104	.
2003	1,623	2,723,004	941,474	104	.
2004	1,562	2,734,373	937,623	104	.
2005	1,531	2,745,299	932,852	104	.
2006	1,527	2,762,931	928,809	104	.
2007	1,481	2,783,785	927,643	104	.
2008	1,447	2,808,076	926,248	104	.
2009	1,469	2,832,704	926,755	104	.
2010	1,480	2,858,190	930,028	104	.
2011	1,526	2,869,225	927,675	104	.
2012	1,523	2,885,257	925,152	104	.
2013	1,560	2,893,212	922,383	104	.
2014	1,501	2,900,475	917,854	104	.
2015	1,505	2,909,011	912,199	104	.
2016	1,502	2,910,844	905,099	104	.
2017	1,515	2,908,718	897,981	104	.
2018	1,489	2,911,359	892,656	104	.
2019	1,518	2,913,314	887,455	104	.
2020	1,514	2,935,880	889,750	104	.
2021	1,508	2,934,582	886,438	104	.



URBAN POPULATION

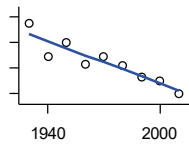
U.S. Census Bureau: Decennial Census

Year	County	State of Kansas	Non Metro Kansas	County Rank	Per 1000 or \$ Per Capita
1930	0	729,834	336,666	105	.
1940	0	753,941	349,228	105	.
1950	0	993,220	398,923	105	.
1960	0	1,328,741	457,447	105	.
1970	0	1,484,870	450,543	105	.
1980	0	1,575,899	474,769	105	.
1990	0	1,712,564	464,205	105	.
2000	0	1,920,081	488,011	105	.
2010	0	2,116,961	485,780	105	.

County: county value. Kansas: state value. County Rank: highest county value ranked #1. (\$000): thousands of dollars. Nonmetro Kansas: Kansas total less Metropolitan Areas as defined by the Office of Management and Budget (OMB; released 3/6/2020). Per 1000: For nonmoney amounts, Per 1000=(county value / county population for the same year as the data) x 1000. \$ Per capita=(county value / county population for the same year as the data). Value= . indicates missing or suppressed data or value not calculated.

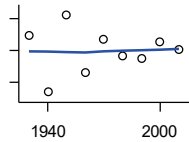
Population

RURAL POPULATION



U.S. Census Bureau

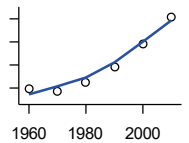
Year	County	State of Kansas	Non Metro Kansas	County Rank	Per 1000 or \$ Per Capita
1930	2,882	1,151,165	843,390	100	.
1940	2,216	1,047,087	747,988	98	.
1950	2,508	912,079	647,900	101	.
1960	2,069	849,870	564,063	103	.
1970	2,215	761,708	509,972	101	.
1980	2,045	787,780	505,873	101	.
1990	1,821	765,010	475,211	101	.
2000	1,749	768,337	471,900	101	.
2010	1,485	736,157	444,201	102	.



NET MIGRATION: DECADE ENDING...

calculated by the Institute for Policy and Social Research, The University of Kansas

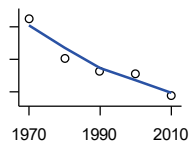
Year	County	State of Kansas	Non Metro Kansas	County Rank	Per 1000 or \$ Per Capita
1930	-6	-66,132	-101,869	31	-2.1
1940	-907	-192,649	-166,022	18	-409.3
1950	309	-84,329	-158,379	20	123.2
1960	-606	-38,999	-146,640	22	-292.9
1970	-72	-119,662	-105,116	15	-32.5
1980	-339	-21,983	-6,184	66	-165.8
1990	-382	-61,835	-79,274	32	-209.8
2000	-118	68,960	4,247	63	-67.5
2010	-226	5,578	-50,648	46	-152.2



MEDIAN AGE

U.S. Census Bureau: Decennial Census

Year	County	State of Kansas	Non Metro Kansas	County Rank	Per 1000 or \$ Per Capita
1960	29.8	26.9	.	73	.
1970	29.2	28.7	.	82	.
1980	31.3	30.1	.	74	.
1990	34.6	32.9	.	75	.
2000	39.5	35.2	.	52	.
2010	45.4	36.0	.	30	.



POPULATION UNDER 18 (DECENNIAL CENSUS)

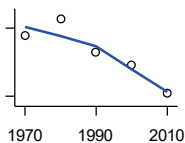
U.S. Census Bureau: Decennial Census

Year	County	State of Kansas	Non Metro Kansas	County Rank	Per 1000 or \$ Per Capita
1970	850	746,354	306,227	103	.
1980	608	649,035	263,919	103	.
1990	529	661,614	250,107	105	.
2000	509	712,993	250,757	103	.
2010	374	726,939	229,213	104	.

County: county value. Kansas: state value. County Rank: highest county value ranked #1. (\$000): thousands of dollars. Nonmetro Kansas: Kansas total less Metropolitan Areas as defined by the Office of Management and Budget (OMB; released 3/6/2020). Per 1000: For nonmoney amounts, Per 1000=(county value / county population for the same year as the data) x 1000. \$ Per capita=(county value / county population for the same year as the data). Value= . indicates missing or suppressed data or value not calculated.

Population

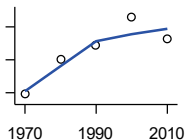
**POPULATION AGE 18 AND OVER
(DECENNIAL CENSUS)**



U.S. Census Bureau: Decennial Census

Year	County	State of Kansas	Non Metro Kansas	County Rank	Per 1000 or \$ Per Capita
1970	1,365	1,500,224	654,288	103	.
1980	1,441	1,714,282	716,684	104	.
1990	1,292	1,815,960	689,309	104	.
2000	1,240	1,975,425	709,154	104	.
2010	1,111	2,126,179	700,768	104	.

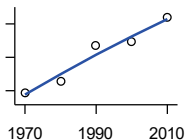
**POPULATION AGE 65 AND OVER
(DECENNIAL CENSUS)**



U.S. Census Bureau: Decennial Census

Year	County	State of Kansas	Non Metro Kansas	County Rank	Per 1000 or \$ Per Capita
1970	269	266,201	149,049	102	.
1980	290	306,263	164,932	103	.
1990	299	342,571	168,579	103	.
2000	316	356,229	161,769	103	.
2010	303	376,116	154,214	104	.

**POPULATION AGE 85 AND OVER
(DECENNIAL CENSUS)**



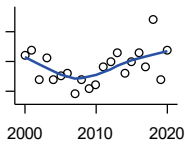
U.S. Census Bureau: Decennial Census

Year	County	State of Kansas	Non Metro Kansas	County Rank	Per 1000 or \$ Per Capita
1970	19	23,899	13,698	101	.
1980	26	33,455	18,804	100	.
1990	47	42,241	22,970	102	.
2000	49	51,770	26,644	102	.
2010	64	59,318	26,197	98	.

County: county value. Kansas: state value. County Rank: highest county value ranked #1. (\$000): thousands of dollars. Nonmetro Kansas: Kansas total less Metropolitan Areas as defined by the Office of Management and Budget (OMB; released 3/6/2020). Per 1000: For nonmoney amounts, Per 1000=(county value / county population for the same year as the data) x 1000. \$ Per capita=(county value / county population for the same year as the data). Value= . indicates missing or suppressed data or value not calculated.

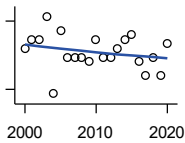
Vital Statistics and Health

BIRTHS (LIVE)



Kansas Department of Health and Environment

Year	County	State of Kansas	Non Metro Kansas	County Rank	Per 1000 or \$ Per Capita
2000	22	39,654	12,980	101	12.6
2001	24	38,832	12,527	98	14.2
2002	14	39,338	12,476	105	8.4
2003	21	39,353	12,342	102	12.9
2004	14	39,553	12,398	104	9.0
2005	15	39,701	12,382	103	9.8
2006	16	40,896	12,726	102	10.5
2007	9	41,951	12,990	105	6.1
2008	14	41,815	12,970	105	9.7
2009	11	41,388	12,949	105	7.5
2010	12	40,439	12,200	105	8.1
2011	18	39,628	12,098	103	11.8
2012	20	40,304	12,217	104	13.1
2013	23	38,805	11,877	101	14.7
2014	16	39,193	12,052	105	10.7
2015	20	39,126	11,836	102	13.3
2016	23	38,048	11,467	100	15.3
2017	18	36,464	10,968	102	11.9
2018	34	36,268	10,826	83	22.8
2019	14	35,395	10,506	103	9.2
2020	24	34,368	10,222	95	15.9



DEATHS

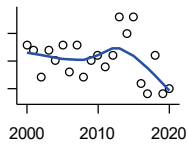
Kansas Department of Health and Environment

Year	County	State of Kansas	Non Metro Kansas	County Rank	Per 1000 or \$ Per Capita
2000	19	24,676	11,175	104	10.9
2001	21	24,590	10,807	102	12.4
2002	21	24,968	11,079	105	12.6
2003	26	24,417	10,615	98	16.0
2004	9	23,720	10,369	105	5.8
2005	23	24,632	10,599	101	15.0
2006	17	24,489	10,538	104	11.1
2007	17	24,413	10,601	102	11.5
2008	17	24,896	10,593	104	11.7
2009	16	23,997	9,938	104	10.9
2010	21	24,428	10,105	101	14.1
2011	17	25,114	10,520	103	11.1
2012	17	25,084	10,259	104	11.2
2013	19	25,347	10,249	102	12.2
2014	21	25,731	10,275	103	14.0
2015	22	26,611	10,539	103	14.6
2016	16	26,129	10,231	104	10.7
2017	13	26,725	10,452	105	8.6
2018	17	27,213	10,389	104	11.4
2019	13	27,312	10,569	105	8.6
2020	20	31,667	11,850	103	13.2

County: county value. Kansas: state value. County Rank: highest county value ranked #1. (\$000): thousands of dollars. Nonmetro Kansas: Kansas total less Metropolitan Areas as defined by the Office of Management and Budget (OMB; released 3/6/2020). Per 1000: For nonmoney amounts, Per 1000=(county value / county population for the same year as the data) x 1000. \$ Per capita=(county value / county population for the same year as the data). Value= . indicates missing or suppressed data or value not calculated.

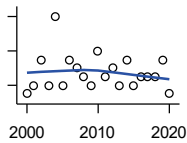
Vital Statistics and Health

MARRIAGES



Kansas Department of Health and Environment

Year	County	State of Kansas	Non Metro Kansas	County Rank	Per 1000 or \$ Per Capita
2000	13	20,426	7,333	103	7.4
2001	12	20,457	7,441	102	7.1
2002	7	19,783	6,794	105	4.2
2003	12	18,722	6,469	100	7.4
2004	10	19,174	6,756	102	6.4
2005	13	18,745	6,481	102	8.5
2006	8	18,836	6,433	103	5.2
2007	13	18,910	6,464	97	8.8
2008	7	18,717	6,283	101	4.8
2009	10	18,268	6,015	104	6.8
2010	11	18,150	5,925	100	7.4
2011	9	17,897	5,977	102	5.9
2012	11	18,154	5,752	99	7.2
2013	18	17,328	5,533	86	11.5
2014	15	17,655	5,535	89	10.0
2015	18	17,595	5,400	84	12.0
2016	6	17,948	5,340	103	4.0
2017	4	17,274	5,163	104	2.6
2018	11	16,362	4,999	94	7.4
2019	4	15,403	4,650	105	2.6
2020	5	14,038	4,066	103	3.3



DIVORCES AND ANNULMENTS

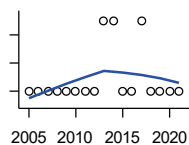
Kansas Department of Health and Environment

Year	County	State of Kansas	Non Metro Kansas	County Rank	Per 1000 or \$ Per Capita
2000	1	10,105	4,000	105	0.6
2001	2	9,885	3,818	103	1.2
2002	5	9,645	3,716	101	3.0
2003	2	8,644	3,464	105	1.2
2004	10	8,759	3,506	85	6.4
2005	2	8,476	3,311	105	1.3
2006	5	9,145	3,387	101	3.3
2007	4	9,347	3,402	102	2.7
2008	3	9,818	3,655	105	2.1
2009	2	10,333	3,463	104	1.4
2010	6	10,579	3,530	98	4.0
2011	3	10,445	3,347	104	2.0
2012	4	9,782	3,040	103	2.6
2013	2	9,085	2,973	103	1.3
2014	5	8,441	2,682	95	3.3
2015	2	8,036	2,704	105	1.3
2016	3	7,198	2,424	100	2.0
2017	3	6,494	2,315	102	2.0
2018	3	6,538	2,269	103	2.0
2019	5	6,398	2,357	94	3.3
2020	1	5,169	1,866	103	0.7

County: county value. Kansas: state value. County Rank: highest county value ranked #1. (\$000): thousands of dollars. Nonmetro Kansas: Kansas total less Metropolitan Areas as defined by the Office of Management and Budget (OMB; released 3/6/2020). Per 1000: For nonmoney amounts, Per 1000=(county value / county population for the same year as the data) x 1000. \$ Per capita=(county value / county population for the same year as the data). Value= . indicates missing or suppressed data or value not calculated.

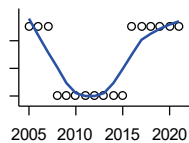
Vital Statistics and Health

PHYSICIANS: M.D. PHYSICIANS



Kansas Department of Health and Environment (1981-2005,2010-);Kansas Health Policy Authority (2006-2009)

Year	County	State of Kansas	Non Metro Kansas	County Rank	Per 1000 or \$ Per Capita
2005	0	4,241	912	105	0.0
2006	0	4,310	953	105	0.0
2007	0	5,309	1,046	105	0.0
2008	0	5,110	1,016	105	0.0
2009	0	5,249	996	105	0.0
2010	0	5,192	979	105	0.0
2011	0	5,243	983	105	0.0
2012	0	5,693	1,033	105	0.0
2013	1	6,106	1,071	100	0.6
2014	1	5,839	951	97	0.7
2015	0	5,703	855	105	0.0
2016	0	4,278	643	105	0.0
2017	1	6,332	1,047	99	0.7
2018	0	6,079	1,065	105	0.0
2019	0	6,435	1,036	105	0.0
2020	0	6,668	1,045	105	0.0
2021	0	6,745	1,042	105	0.0



PHYSICIANS: D.O. PHYSICIANS

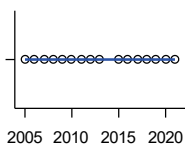
Kansas Department of Health and Environment (1981-2005,2010-);Kansas Health Policy Authority (2006-2009)

Year	County	State of Kansas	Non Metro Kansas	County Rank	Per 1000 or \$ Per Capita
2005	1	553	174	68	0.7
2006	1	508	171	66	0.7
2007	1	569	169	66	0.7
2008	0	558	166	105	0.0
2009	0	564	160	105	0.0
2010	0	583	169	105	0.0
2011	0	502	152	105	0.0
2012	0	718	200	105	0.0
2013	0	829	210	105	0.0
2014	0	817	189	105	0.0
2015	0	819	190	105	0.0
2016	1	632	136	58	0.7
2017	1	579	129	57	0.7
2018	1	871	164	64	0.7
2019	1	951	212	65	0.7
2020	1	1,018	204	66	0.7
2021	1	1,095	217	74	0.7

County: county value. Kansas: state value. County Rank: highest county value ranked #1. (\$000): thousands of dollars. Nonmetro Kansas: Kansas total less Metropolitan Areas as defined by the Office of Management and Budget (OMB; released 3/6/2020). Per 1000: For nonmoney amounts, Per 1000=(county value / county population for the same year as the data) x 1000. \$ Per capita=(county value / county population for the same year as the data). Value= . indicates missing or suppressed data or value not calculated.

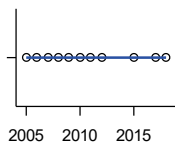
Vital Statistics and Health

DENTISTS



Kansas Department of Health and Environment (1981-2006,2010-);Kansas Health Policy Authority (2007-2009)

Year	County	State of Kansas	Non Metro Kansas	County Rank	Per 1000 or \$ Per Capita
2005	0	1,347	363	105	0.0
2006	0	1,381	361	105	0.0
2007	0	1,335	350	105	0.0
2008	0	1,392	353	105	0.0
2009	0	1,353	350	105	0.0
2010	0	1,401	365	105	0.0
2011	0	1,338	346	105	0.0
2012	0	1,434	392	105	0.0
2013	0	1,212	328	105	0.0
2015	0	1,240	327	105	0.0
2016	0	1,456	350	105	0.0
2017	0	1,467	350	105	0.0
2018	0	1,604	359	105	0.0
2019	0	1,646	355	105	0.0
2020	0	1,646	355	105	0.0
2021	0	1,688	362	105	0.0



NUMBER OF HOSPITALS

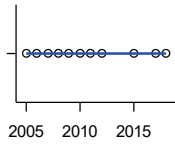
American Hospital Association, American Hospital Association Guide to the Health Care Field

Year	County	State of Kansas	Non Metro Kansas	County Rank	Per 1000 or \$ Per Capita
2005	0	158	105	105	.
2006	0	158	105	105	.
2007	0	159	104	105	.
2008	0	159	104	105	.
2009	0	158	105	105	.
2010	0	158	104	105	.
2011	0	158	103	105	.
2012	0	157	103	105	.
2015	0	155	103	105	.
2017	0	157	102	105	.
2018	0	154	99	105	.

County: county value. Kansas: state value. County Rank: highest county value ranked #1. (\$000): thousands of dollars. Nonmetro Kansas: Kansas total less Metropolitan Areas as defined by the Office of Management and Budget (OMB; released 3/6/2020). Per 1000: For nonmoney amounts, Per 1000=(county value / county population for the same year as the data) x 1000. \$ Per capita=(county value / county population for the same year as the data). Value= . indicates missing or suppressed data or value not calculated.

Vital Statistics and Health

NUMBER OF HOSPITAL BEDS

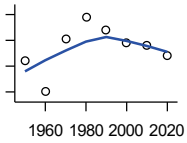


Kansas Department of Health and Environment

Year	County	State of Kansas	Non Metro Kansas	County Rank	Per 1000 or \$ Per Capita
2005	0	12,389	5,687	105	0.0
2006	0	11,992	5,514	105	0.0
2007	0	12,171	5,637	105	0.0
2008	0	12,332	5,700	105	0.0
2009	0	12,283	5,652	105	0.0
2010	0	12,218	5,521	105	0.0
2011	0	12,182	5,335	105	0.0
2012	0	12,002	5,355	105	0.0
2015	0	11,926	5,330	105	0.0
2017	0	11,491	4,825	105	0.0
2018	0	11,448	4,583	105	0.0

Housing

HOUSING UNITS (DECENNIAL)



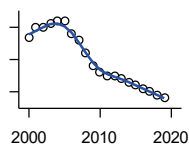
U.S. Census Bureau: Decennial Census

Year	County	State of Kansas	Non Metro Kansas	County Rank	Per 1000 or \$ Per Capita
1950	720	586,650	328,210	103	287.1
1960	603	672,899	329,380	104	291.4
1970	805	789,735	363,824	103	363.4
1980	892	955,207	416,877	104	436.2
1990	840	1,044,112	417,062	104	461.3
2000	791	1,131,395	422,218	104	452.3
2010	781	1,233,215	424,050	104	525.9
2020	740	1,275,689	413,120	104	489.4

County: county value. Kansas: state value. County Rank: highest county value ranked #1. (\$000): thousands of dollars. Nonmetro Kansas: Kansas total less Metropolitan Areas as defined by the Office of Management and Budget (OMB; released 3/6/2020). Per 1000: For nonmoney amounts, Per 1000=(county value / county population for the same year as the data) x 1000. \$ Per capita=(county value / county population for the same year as the data). Value= . indicates missing or suppressed data or value not calculated.

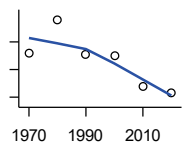
Housing

HOUSING UNITS (ESTIMATED)



U.S. Census Bureau

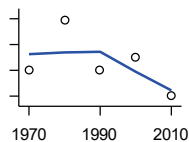
Year	County	State of Kansas	Non Metro Kansas	County Rank	Per 1000 or \$ Per Capita
2000	792	1,134,529	422,560	104	452.8
2001	795	1,146,858	423,876	104	469.0
2002	795	1,160,129	425,089	104	475.8
2003	796	1,171,620	425,936	104	490.4
2004	797	1,184,702	426,593	104	510.2
2005	797	1,195,791	426,964	104	520.6
2006	793	1,206,692	426,713	104	519.3
2007	791	1,217,608	426,090	104	534.1
2008	787	1,225,625	425,768	104	543.9
2009	783	1,230,552	424,776	104	533.0
2010	781	1,234,456	424,174	104	525.9
2011	780	1,238,052	424,549	104	511.1
2012	780	1,241,992	425,116	104	512.1
2013	779	1,246,675	425,699	104	499.4
2014	778	1,253,284	426,269	104	518.3
2015	777	1,258,999	426,844	104	516.3
2016	776	1,265,684	427,465	104	516.6
2017	775	1,273,536	427,746	104	511.6
2018	774	1,280,649	428,099	104	519.8
2019	773	1,288,401	428,495	104	509.2



OCCUPIED HOUSING UNITS

U.S. Census Bureau: Decennial Census

Year	County	State of Kansas	Non Metro Kansas	County Rank	Per 1000 or \$ Per Capita
1970	680	727,364	326,494	104	307.0
1980	740	872,239	371,693	104	361.9
1990	677	944,726	365,901	104	371.8
2000	674	1,037,891	375,313	104	385.4
2010	620	1,112,096	370,269	104	417.5
2020	608	1,151,360	356,330	104	402.1



OWNER OCCUPIED HOUSING UNITS

U.S. Census Bureau: Decennial Census

Year	County	State of Kansas	Non Metro Kansas	County Rank	Per 1000 or \$ Per Capita
1970	500	502,585	236,338	103	225.7
1980	578	612,433	277,096	103	282.6
1990	501	641,762	263,099	104	275.1
2000	521	718,703	271,350	104	297.9
2010	460	753,532	261,763	104	309.8

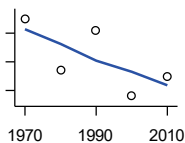
County: county value. Kansas: state value. County Rank: highest county value ranked #1. (\$000): thousands of dollars. Nonmetro Kansas: Kansas total less Metropolitan Areas as defined by the Office of Management and Budget (OMB; released 3/6/2020). Per 1000: For nonmoney amounts, Per 1000=(county value / county population for the same year as the data) x 1000. \$ Per capita=(county value / county population for the same year as the data). Value= . indicates missing or suppressed data or value not calculated.

Housing

RENTER OCCUPIED HOUSING UNITS

Year	County	State of Kansas	Non Metro Kansas	County Rank	Per 1000 or \$ Per Capita
1970	180	224,779	90,156	104	81.3
1980	162	259,806	94,597	104	79.2
1990	176	302,964	102,802	104	96.7
2000	153	319,188	103,963	105	87.5
2010	160	358,564	108,506	104	107.7

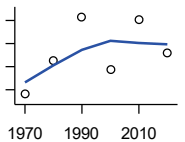
U.S. Census Bureau: Decennial Census



VACANT HOUSING UNITS

Year	County	State of Kansas	Non Metro Kansas	County Rank	Per 1000 or \$ Per Capita
1970	96	60,058	35,954	102	43.3
1980	125	77,912	41,584	105	61.1
1990	163	99,386	51,161	101	89.5
2000	117	93,309	46,904	103	66.9
2010	161	121,119	53,781	102	108.4
2020	132	124,329	56,790	103	87.3

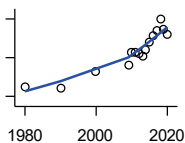
U.S. Census Bureau: Decennial Census



MEDIAN VALUE (\$): OWNER OCCUPIED HOUSING UNITS

Year	County	State of Kansas	Non Metro Kansas	County Rank	Per 1000 or \$ Per Capita
1980	30,400	37,800	.	40	.
1990	28,400	52,200	.	70	.
2000	45,700	83,500	.	71	.
2009	52,700	118,500	.	91	.
2010	65,300	122,600	.	72	.
2011	65,100	125,500	.	76	.
2012	64,100	127,400	.	79	.
2013	61,900	128,400	.	88	.
2014	67,700	129,400	.	79	.
2015	76,300	132,000	.	71	.
2016	82,500	135,300	.	64	.
2017	88,300	139,200	.	50	.
2018	99,300	145,400	.	39	.
2019	89,400	151,900	.	63	.
2020	84,500	157,600	.	68	.

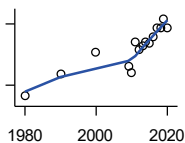
U.S. Census Bureau, Decennial Census (- 2000), (2009 -) American Community Survey five-year average ending in year shown.



County: county value. Kansas: state value. County Rank: highest county value ranked #1. (\$000): thousands of dollars. Nonmetro Kansas: Kansas total less Metropolitan Areas as defined by the Office of Management and Budget (OMB; released 3/6/2020). Per 1000: For nonmoney amounts, Per 1000=(county value / county population for the same year as the data) x 1000. \$ Per capita=(county value / county population for the same year as the data). Value= . indicates missing or suppressed data or value not calculated.

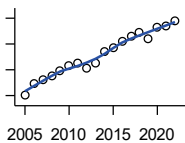
Housing

MEDIAN CONTRACT RENT (\$)



U.S. Census Bureau, Decennial Census (- 2000), (2009 -) American Community Survey five-year average ending in year shown.

Year	County	State of Kansas	Non Metro Kansas	County Rank	Per 1000 or \$ Per Capita
1980	146	219	.	84	.
1990	257	372	.	66	.
2000	361	498	.	64	.
2009	292	491	.	76	.
2010	263	507	.	99	.
2011	411	699	.	103	.
2012	375	715	.	105	.
2013	395	732	.	104	.
2014	409	748	.	104	.
2015	406	757	.	105	.
2016	438	775	.	105	.
2017	478	801	.	102	.
2018	481	831	.	103	.
2019	525	850	.	99	.
2020	482	863	.	103	.



FAIR MARKET RENT: 2 BEDROOMS

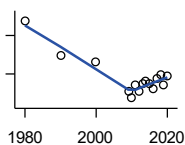
U.S. Department of Housing and Urban Development (HUD)

Year	County	State of Kansas	Non Metro Kansas	County Rank	Per 1000 or \$ Per Capita
2005	454	.	.	83	.
2006	497	.	.	105	.
2007	512	.	.	105	.
2008	525	628	.	105	.
2009	547	653	.	105	.
2010	566	678	.	105	.
2011	575	684	.	105	.
2012	555	660	.	43	.
2013	577	712	.	105	.
2014	622	746	.	105	.
2015	634	756	.	105	.
2016	658	781	.	105	.
2017	681	811	.	105	.
2018	697	815	.	105	.
2019	672	828	.	105	.
2020	714	855	.	105	.
2021	718	874	.	105	.
2022	742	879	.	105	.

County: county value. Kansas: state value. County Rank: highest county value ranked #1. (\$000): thousands of dollars. Nonmetro Kansas: Kansas total less Metropolitan Areas as defined by the Office of Management and Budget (OMB; released 3/6/2020). Per 1000: For nonmoney amounts, Per 1000=(county value / county population for the same year as the data) x 1000. \$ Per capita=(county value / county population for the same year as the data). Value= . indicates missing or suppressed data or value not calculated.

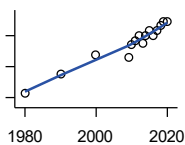
Education

POPULATION AGE 25+



U.S. Census Bureau, Decennial Census (- 2000), (2009 -) American Community Survey five-year average ending in year shown.

Year	County	State of Kansas	Non Metro Kansas	County Rank	Per 1000 or \$ Per Capita
1980	1,238	1,388,102	596,639	.	.
1990	1,147	1,565,936	608,745	.	.
2000	1,133	1,701,207	618,131	.	.
2009	1,054	1,775,427	600,188	.	.
2010	1,037	1,802,904	608,716	.	.
2011	1,072	1,822,400	610,386	.	.
2012	1,056	1,838,079	611,103	.	.
2013	1,075	1,850,010	610,374	.	.
2014	1,082	1,861,894	609,612	.	.
2015	1,075	1,869,698	606,967	.	.
2016	1,061	1,878,495	604,563	.	.
2017	1,087	1,886,741	601,076	.	.
2018	1,098	1,894,675	598,487	.	.
2019	1,070	1,902,279	595,501	.	.
2020	1,094	1,911,990	593,923	.	.



PERCENT HS GRADUATE OR HIGHER AGE 25+

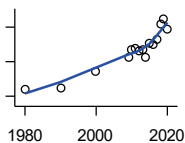
U.S. Census Bureau, Decennial Census (- 2000), (2009 -) American Community Survey five-year average ending in year shown.

Year	County	State of Kansas	Non Metro Kansas	County Rank	Per 1000 or \$ Per Capita
1980	71.2	73.3	.	40	.
1990	77.8	81.3	.	50	.
2000	84.0	86.0	.	65	.
2009	82.9	89.0	.	91	.
2010	87.0	89.2	.	78	.
2011	88.2	89.5	.	69	.
2012	90.0	89.7	.	46	.
2013	87.5	89.8	.	83	.
2014	90.1	90.0	.	50	.
2015	91.5	90.2	.	40	.
2016	89.8	90.3	.	70	.
2017	91.5	90.5	.	50	.
2018	93.4	90.7	.	23	.
2019	94.7	91.0	.	12	.
2020	94.7	91.4	.	14	.

County: county value. Kansas: state value. County Rank: highest county value ranked #1. (\$000): thousands of dollars. Nonmetro Kansas: Kansas total less Metropolitan Areas as defined by the Office of Management and Budget (OMB; released 3/6/2020). Per 1000: For nonmoney amounts, Per 1000=(county value / county population for the same year as the data) x 1000. \$ Per capita=(county value / county population for the same year as the data). Value= . indicates missing or suppressed data or value not calculated.

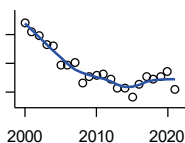
Education

PERCENT BACHELORS DEGREE OR HIGHER AGE 25+



U.S. Census Bureau, Decennial Census (- 2000), (2009 -) American Community Survey five-year average ending in year shown.

Year	County	State of Kansas	Non Metro Kansas	County Rank	Per 1000 or \$ Per Capita
1980	11.9	17.0	.	52	.
1990	12.5	21.1	.	72	.
2000	17.2	25.8	.	50	.
2009	21.1	28.8	.	27	.
2010	23.4	29.3	.	17	.
2011	23.9	29.7	.	14	.
2012	23.0	30.0	.	25	.
2013	23.5	30.3	.	22	.
2014	21.2	30.7	.	41	.
2015	25.2	31.0	.	22	.
2016	24.9	31.6	.	26	.
2017	26.4	32.3	.	22	.
2018	30.9	32.9	.	10	.
2019	32.4	33.4	.	7	.
2020	29.4	33.9	.	16	.



PUBLIC SCHOOL ENROLLMENT (FTE) SCHOOL YEAR BEGINNING...

Kansas State Department of Education

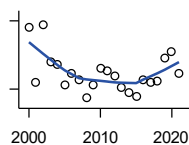
Year	County	State of Kansas	Non Metro Kansas	County Rank	Per 1000 or \$ Per Capita
2000	394.5	448,150.8	166,722.5	103	225.6
2001	379.5	447,047.1	164,365.0	102	223.9
2002	373.2	444,860.3	161,555.4	101	223.3
2003	357.2	443,620.6	159,130.2	102	220.1
2004	354.8	441,957.2	156,566.3	101	227.1
2005	323.0	442,708.4	155,197.2	103	211.0
2006	321.5	444,878.7	153,842.3	102	210.5
2007	325.5	446,831.3	152,337.1	101	219.8
2008	291.5	447,730.0	150,572.7	104	201.5
2009	301.5	453,202.5	151,246.8	102	205.2
2010	304.0	455,405.0	151,023.8	102	204.7
2011	305.5	456,000.5	150,257.9	100	200.2
2012	297.5	458,496.4	150,463.0	103	195.3
2013	283.0	461,950.0	150,420.9	103	181.4
2014	281.5	464,395.4	150,499.4	102	187.5
2015	265.5	463,504.0	149,539.3	104	176.4
2016	289.5	459,920.3	147,293.5	100	192.7
2017	303.0	477,977.9	152,096.3	101	200.0
2018	297.5	476,481.7	150,456.8	101	199.8
2019	301.5	476,525.1	150,045.2	101	198.6
2020	311.0	462,088.0	146,369.6	100	205.7
2021	280.5	463,652.4	147,500.4	103	186.0

County: county value. Kansas: state value. County Rank: highest county value ranked #1. (\$000): thousands of dollars. Nonmetro Kansas: Kansas total less Metropolitan Areas as defined by the Office of Management and Budget (OMB; released 3/6/2020). Per 1000: For nonmoney amounts, Per 1000=(county value / county population for the same year as the data) x 1000. \$ Per capita=(county value / county population for the same year as the data). Value= . indicates missing or suppressed data or value not calculated.

Education

PUPIL/TEACHER RATIO SCHOOL YEAR BEGINNING...

Kansas State Department of Education

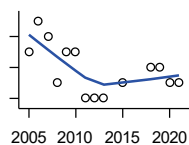


Year	County	State of Kansas	Non Metro Kansas	County Rank	Per 1000 or \$ Per Capita
2000	10.7	15.4	13.9	95	.
2001	8.3	15.3	13.8	105	.
2002	10.8	15.4	13.9	95	.
2003	9.2	15.5	13.8	103	.
2004	9.1	15.3	13.6	104	.
2005	8.2	15.0	13.4	104	.
2006	8.7	14.7	13.2	103	.
2007	8.4	14.6	13.1	105	.
2008	7.6	14.4	12.9	105	.
2009	8.2	14.8	13.2	105	.
2010	8.9	15.2	13.6	105	.
2011	8.8	15.1	13.5	104	.
2012	8.6	15.1	13.5	105	.
2013	8.1	15.1	13.5	105	.
2014	7.8	15.0	13.6	105	.
2015	7.7	15.2	13.9	104	.
2016	8.4	15.1	13.7	105	.
2017	8.3	15.5	13.9	105	.
2018	8.4	15.3	13.8	105	.
2019	9.4	15.2	13.7	102	.
2020	9.7	14.7	13.4	99	.
2021	8.7	14.8	13.5	104	.

Social Environment

CHILD CARE FACILITIES: TOTAL CHILD CARE FACILITIES

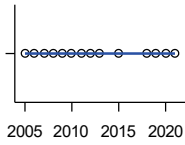
Kansas Department of Health and Environment, Bureau of Adult and Child Care



Year	County	State of Kansas	Non Metro Kansas	County Rank	Per 1000 or \$ Per Capita
2005	4	8,258	3,378	105	2.6
2006	6	8,442	3,429	102	3.9
2007	5	8,241	3,317	105	3.4
2008	2	8,011	3,150	105	1.4
2009	4	7,853	3,066	103	2.7
2010	4	7,354	2,858	103	2.7
2011	1	6,835	2,623	105	0.7
2012	1	6,346	2,409	105	0.7
2013	1	5,754	2,179	105	0.6
2015	2	5,289	2,146	105	1.3
2018	3	4,607	1,904	102	2.0
2019	3	4,287	1,774	101	2.0
2020	2	4,274	1,798	105	1.3
2021	2	4,002	1,700	105	1.3

County: county value. Kansas: state value. County Rank: highest county value ranked #1. (\$000): thousands of dollars. Nonmetro Kansas: Kansas total less Metropolitan Areas as defined by the Office of Management and Budget (OMB; released 3/6/2020). Per 1000: For nonmoney amounts, Per 1000=(county value / county population for the same year as the data) x 1000. \$ Per capita=(county value / county population for the same year as the data). Value= . indicates missing or suppressed data or value not calculated.

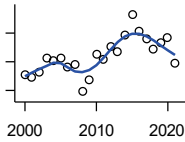
Social Environment



**CHILD CARE FACILITIES:
PRESCHOOLS**

Kansas Department of Health and Environment, Bureau of Adult and Child Care

Year	County	State of Kansas	Non Metro Kansas	County Rank	Per 1000 or \$ Per Capita
2005	0	243	140	105	0.0
2006	0	221	127	105	0.0
2007	0	208	119	105	0.0
2008	0	204	114	105	0.0
2009	0	194	107	105	0.0
2010	0	194	112	105	0.0
2011	0	209	123	105	0.0
2012	0	201	121	105	0.0
2013	0	140	84	105	0.0
2015	0	185	113	105	0.0
2018	0	150	94	105	0.0
2019	0	134	83	105	0.0
2020	0	126	78	105	0.0
2021	0	120	74	105	0.0



FOOD STAMP BENEFICIARIES

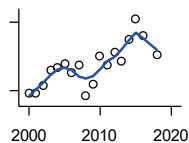
Kansas Social and Rehabilitation Services

Year	County	State of Kansas	Non Metro Kansas	County Rank	Per 1000 or \$ Per Capita
2000	51	110,619	44,825	100	29.2
2001	49	117,241	46,741	100	28.9
2002	53	131,726	52,342	101	31.7
2003	63	155,908	61,280	102	38.8
2004	61	167,971	65,852	103	39.1
2005	63	175,710	67,261	102	41.1
2006	56	182,821	67,487	104	36.7
2007	58	184,035	66,979	103	39.2
2008	39	187,377	67,160	104	27.0
2009	47	208,007	73,637	103	32.0
2010	65	259,609	90,919	103	43.8
2011	62	296,542	101,155	104	40.6
2012	71	303,257	102,478	104	46.6
2013	67	316,424	105,345	104	42.9
2014	79	301,377	100,761	103	52.6
2015	93	277,614	93,353	100	61.8
2016	81	258,412	88,343	100	53.9
2017	76	239,592	82,070	100	50.2
2018	69	219,738	75,208	102	46.3
2019	73	205,261	69,899	100	48.1
2020	77	198,457	66,721	99	50.9
2021	59	203,424	68,883	103	39.1

County: county value. Kansas: state value. County Rank: highest county value ranked #1. (\$000): thousands of dollars. Nonmetro Kansas: Kansas total less Metropolitan Areas as defined by the Office of Management and Budget (OMB; released 3/6/2020). Per 1000: For nonmoney amounts, Per 1000=(county value / county population for the same year as the data) x 1000. \$ Per capita=(county value / county population for the same year as the data). Value= . indicates missing or suppressed data or value not calculated.

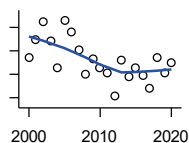
Social Environment

PERCENT OF POPULATION RECEIVING FOOD STAMPS



U.S. Dept. of Agriculture Food and Nutrition Service (1990-1997); Kansas Social and Rehabilitation Services (1998-)

Year	County	State of Kansas	Non Metro Kansas	County Rank	Per 1000 or \$ Per Capita
2000	2.9	4.1	.	75	.
2001	2.9	4.3	.	76	.
2002	3.2	4.9	.	78	.
2003	3.9	5.7	.	75	.
2004	4.0	6.2	.	78	.
2005	4.2	6.4	.	75	.
2006	3.8	6.6	.	90	.
2007	4.1	6.6	.	83	.
2008	2.8	6.7	.	99	.
2009	3.3	7.4	.	97	.
2010	4.5	9.1	.	93	.
2011	4.1	10.3	.	101	.
2012	4.7	10.5	.	95	.
2013	4.3	10.9	.	101	.
2014	5.2	10.4	.	88	.
2015	6.1	9.6	.	69	.
2016	5.4	8.9	.	77	.
2018	4.6	7.5	.	83	.



ESTIMATED NUMBER OF PEOPLE IN POVERTY

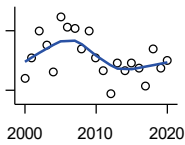
U.S. Census Bureau, Small Area Income and Poverty Estimates

Year	County	State of Kansas	Non Metro Kansas	County Rank	Per 1000 or \$ Per Capita
2000	194	235,087	98,984	102	110.9
2001	209	252,134	106,257	101	123.3
2002	225	265,673	107,542	101	134.6
2003	208	278,163	107,323	101	128.2
2004	186	297,733	111,534	102	119.1
2005	226	310,667	118,768	101	147.6
2006	216	327,102	123,700	102	141.5
2007	201	301,828	111,953	101	135.7
2008	180	307,804	113,015	103	124.4
2009	193	359,692	123,394	101	131.4
2010	185	374,677	131,502	103	124.6
2011	181	383,859	134,912	103	118.6
2012	162	392,095	133,800	103	106.4
2013	192	391,718	134,067	102	123.1
2014	178	381,506	130,213	103	118.6
2015	186	366,069	123,073	102	123.6
2016	179	343,773	121,314	103	119.2
2017	168	335,371	116,854	103	110.9
2018	194	336,892	114,490	102	130.3
2019	181	319,931	110,692	103	119.2
2020	190	300,931	100,998	101	125.7

County: county value. Kansas: state value. County Rank: highest county value ranked #1. (\$000): thousands of dollars. Nonmetro Kansas: Kansas total less Metropolitan Areas as defined by the Office of Management and Budget (OMB; released 3/6/2020). Per 1000: For nonmoney amounts, Per 1000=(county value / county population for the same year as the data) x 1000. \$ Per capita=(county value / county population for the same year as the data). Value= . indicates missing or suppressed data or value not calculated.

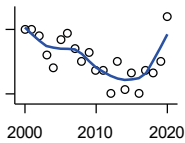
Social Environment

ESTIMATED % OF PEOPLE IN POVERTY



U.S. Census Bureau, Small Area Income and Poverty Estimates

Year	County	State of Kansas	Non Metro Kansas	County Rank	Per 1000 or \$ Per Capita
2000	11.6	8.9	.	23	.
2001	12.6	9.5	.	26	.
2002	14.0	10.0	.	9	.
2003	13.3	10.4	.	13	.
2004	11.9	11.1	.	37	.
2005	14.7	11.7	.	17	.
2006	14.2	12.2	.	30	.
2007	14.1	11.2	.	18	.
2008	13.1	11.3	.	26	.
2009	14.0	13.2	.	32	.
2010	12.6	13.5	.	54	.
2011	12.0	13.8	.	70	.
2012	10.8	14.0	.	82	.
2013	12.4	13.9	.	60	.
2014	12.0	13.5	.	62	.
2015	12.4	12.9	.	46	.
2016	12.1	12.2	.	50	.
2017	11.2	11.9	.	72	.
2018	13.1	11.9	.	41	.
2019	12.1	11.3	.	47	.
2020	12.5	10.6	.	34	.



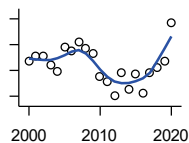
EST. NUMBER OF RELATED CHILDREN AGE 5 TO 17 IN FAMILIES IN POVERTY

U.S. Census Bureau, Small Area Income and Poverty Estimates

Year	County	State of Kansas	Non Metro Kansas	County Rank	Per 1000 or \$ Per Capita
2000	60	50,388	21,854	99	34.3
2001	60	53,755	23,094	99	35.4
2002	57	52,453	21,423	95	34.1
2003	48	55,419	21,809	99	29.6
2004	42	59,392	22,313	100	26.9
2005	55	60,203	24,244	99	35.9
2006	58	64,427	25,326	98	38.0
2007	51	61,149	23,639	97	34.4
2008	45	59,842	22,661	99	31.1
2009	49	71,850	26,251	99	33.4
2010	41	81,077	29,804	102	27.6
2011	41	82,311	29,306	102	26.9
2012	30	87,594	29,781	104	19.7
2013	45	84,325	29,253	102	28.8
2014	32	83,873	29,354	104	21.3
2015	40	78,192	27,482	103	26.6
2016	30	67,810	25,074	104	20.0
2017	41	67,873	25,032	102	27.1
2018	40	68,153	24,928	102	26.9
2019	45	64,613	23,117	101	29.6
2020	66	59,792	21,143	89	43.7

County: county value. Kansas: state value. County Rank: highest county value ranked #1. (\$000): thousands of dollars. Nonmetro Kansas: Kansas total less Metropolitan Areas as defined by the Office of Management and Budget (OMB; released 3/6/2020). Per 1000: For nonmoney amounts, Per 1000=(county value / county population for the same year as the data) x 1000. \$ Per capita=(county value / county population for the same year as the data). Value= . indicates missing or suppressed data or value not calculated.

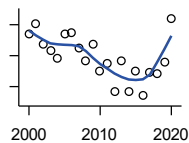
Social Environment



EST. % OF RELATED CHILDREN AGE 5 TO 17 IN FAMILIES IN POVERTY

U.S. Census Bureau, Small Area Income and Poverty Estimates

Year	County	State of Kansas	Non Metro Kansas	County Rank	Per 1000 or \$ Per Capita
2000	16.9	10.0	.	6	.
2001	17.8	10.8	.	6	.
2002	17.7	10.5	.	4	.
2003	16.1	11.3	.	12	.
2004	14.7	12.5	.	26	.
2005	19.4	12.8	.	9	.
2006	18.9	13.2	.	16	.
2007	20.5	12.6	.	7	.
2008	19.3	12.3	.	7	.
2009	18.4	14.7	.	23	.
2010	13.9	15.9	.	80	.
2011	12.9	16.2	.	86	.
2012	10.2	17.2	.	102	.
2013	14.5	16.5	.	69	.
2014	11.3	16.4	.	98	.
2015	14.4	15.3	.	68	.
2016	10.7	13.2	.	92	.
2017	14.6	13.4	.	64	.
2018	15.5	13.5	.	60	.
2019	16.9	12.9	.	29	.
2020	24.3	11.9	.	3	.



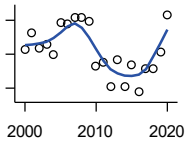
ESTIMATED NUMBER UNDER 18 IN POVERTY

U.S. Census Bureau, Small Area Income and Poverty Estimates

Year	County	State of Kansas	Non Metro Kansas	County Rank	Per 1000 or \$ Per Capita
2000	84	82,619	34,843	100	48.0
2001	91	87,487	36,724	99	53.7
2002	77	84,181	32,870	98	46.1
2003	73	93,896	36,004	100	45.0
2004	68	98,641	36,272	100	43.5
2005	84	100,254	39,118	99	54.9
2006	85	105,193	41,054	98	55.7
2007	75	100,242	37,881	99	50.6
2008	67	100,146	37,552	100	46.3
2009	77	118,187	42,682	99	52.4
2010	60	129,009	46,428	102	40.4
2011	65	133,478	46,832	101	42.6
2012	47	135,261	46,294	104	30.9
2013	67	131,251	44,952	102	42.9
2014	47	125,562	43,933	104	31.3
2015	60	119,994	41,828	103	39.9
2016	44	100,996	37,387	104	29.3
2017	59	102,858	37,955	102	38.9
2018	58	102,616	36,991	103	39.0
2019	66	97,920	34,797	101	43.5
2020	94	88,491	30,767	89	62.2

County: county value. Kansas: state value. County Rank: highest county value ranked #1. (\$000): thousands of dollars. Nonmetro Kansas: Kansas total less Metropolitan Areas as defined by the Office of Management and Budget (OMB; released 3/6/2020). Per 1000: For nonmoney amounts, Per 1000=(county value / county population for the same year as the data) x 1000. \$ Per capita=(county value / county population for the same year as the data). Value= . indicates missing or suppressed data or value not calculated.

Social Environment



ESTIMATED PERCENT UNDER 18 IN POVERTY

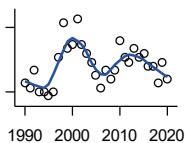
U.S. Census Bureau, Small Area Income and Poverty Estimates

Year	County	State of Kansas	Non Metro Kansas	County Rank	Per 1000 or \$ Per Capita
2000	18.2	11.9	.	10	.
2001	20.6	12.7	.	4	.
2002	18.4	12.1	.	7	.
2003	19.0	13.8	.	11	.
2004	17.4	14.6	.	25	.
2005	22.1	15.2	.	10	.
2006	22.0	15.4	.	16	.
2007	23.0	14.7	.	8	.
2008	23.0	14.6	.	7	.
2009	22.4	17.1	.	17	.
2010	15.8	18.1	.	76	.
2011	16.4	18.8	.	77	.
2012	12.8	19.0	.	102	.
2013	16.7	18.4	.	65	.
2014	12.7	17.6	.	94	.
2015	15.9	16.9	.	65	.
2016	11.9	14.3	.	90	.
2017	15.3	14.7	.	70	.
2018	15.4	14.8	.	71	.
2019	17.8	14.3	.	34	.
2020	23.3	13.0	.	5	.

County: county value. Kansas: state value. County Rank: highest county value ranked #1. (\$000): thousands of dollars. Nonmetro Kansas: Kansas total less Metropolitan Areas as defined by the Office of Management and Budget (OMB; released 3/6/2020). Per 1000: For nonmoney amounts, Per 1000=(county value / county population for the same year as the data) x 1000. \$ Per capita=(county value / county population for the same year as the data). Value= . indicates missing or suppressed data or value not calculated.

Business

ESTABLISHMENTS TOTAL COUNTY BUSINESS PATTERNS



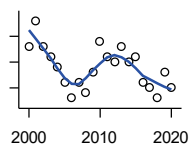
U.S. Census Bureau, County Business Patterns. Beginning with the 2017 data, any tabulation with fewer than 3 establishments were omitted from the release. Data for these establishments are included in the broader total.

Year	County	State of Kansas	Non Metro Kansas	County Rank	Per 1000 or \$ Per Capita
1990	52	65,858	26,802	104	28.6
1991	51	65,941	26,750	104	27.7
1992	55	67,630	27,229	104	30.2
1993	50	68,930	27,655	104	27.4
1994	50	69,822	27,763	104	27.6
1995	49	70,894	28,111	104	27.2
1996	50	72,017	28,353	104	27.8
1997	58	73,924	28,884	104	32.2
1998	66	74,019	28,749	102	36.6
1999	60	74,486	28,536	104	33.6
2000	61	74,939	28,475	103	34.9
2001	67	74,565	28,282	102	39.5
2002	61	75,077	28,183	103	36.5
2003	59	74,972	27,998	103	36.4
2004	57	75,827	28,009	103	36.5
2005	54	76,173	27,830	103	35.3
2006	51	76,446	27,653	103	33.4
2007	55	77,157	27,736	103	37.1
2008	53	76,096	27,314	103	36.6
2009	55	74,698	26,839	103	37.4
2010	62	74,301	26,739	103	41.8
2011	58	73,598	26,555	103	38.0
2012	57	73,944	26,534	103	37.4
2013	60	73,816	26,393	102	38.5
2014	58	74,055	26,292	103	38.6
2015	59	74,526	26,355	103	39.2
2016	56	74,884	26,172	103	37.3
2017	56	74,947	26,093	103	37.0
2018	52	74,559	25,802	103	34.9
2019	57	74,292	25,536	103	37.5
2020	53	73,982	25,178	103	35.1

County: county value. Kansas: state value. County Rank: highest county value ranked #1. (\$000): thousands of dollars. Nonmetro Kansas: Kansas total less Metropolitan Areas as defined by the Office of Management and Budget (OMB; released 3/6/2020). Per 1000: For nonmoney amounts, Per 1000=(county value / county population for the same year as the data) x 1000. \$ Per capita=(county value / county population for the same year as the data). Value= . indicates missing or suppressed data or value not calculated.

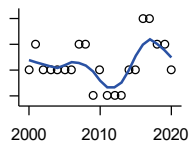
Business

**ESTABLISHMENTS: 1-19
EMPLOYEES**



U.S. Census Bureau, County Business Patterns. Beginning with the 2017 data, any tabulation with fewer than 3 establishments were omitted from the release. Data for these establishments are included in the broader total.

Year	County	State of Kansas	Non Metro Kansas	County Rank	Per 1000 or \$ Per Capita
2000	58	64,527	25,381	103	33.2
2001	63	64,176	25,248	102	37.2
2002	58	64,886	25,208	103	34.7
2003	56	64,714	25,020	103	34.5
2004	54	65,554	24,995	102	34.6
2005	51	65,796	24,839	103	33.3
2006	48	65,764	24,589	103	31.4
2007	51	66,446	24,701	103	34.4
2008	49	65,322	24,257	103	33.9
2009	53	64,128	23,851	103	36.1
2010	59	64,015	23,857	103	39.7
2011	56	63,251	23,571	103	36.7
2012	55	63,519	23,575	102	36.1
2013	58	63,197	23,396	100	37.2
2014	55	63,113	23,229	103	36.6
2015	56	63,280	23,227	103	37.2
2016	51	63,630	23,117	103	34.0
2017	50	63,619	23,022	103	33.0
2018	48	63,233	22,745	103	32.2
2019	53	62,904	22,489	103	34.9
2020	50	62,634	22,173	103	33.1



**ESTABLISHMENTS: 20-99
EMPLOYEES**

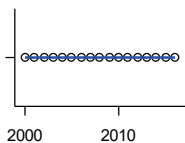
U.S. Census Bureau, County Business Patterns. Beginning with the 2017 data, any tabulation with fewer than 3 establishments were omitted from the release. Data for these establishments are included in the broader total.

Year	County	State of Kansas	Non Metro Kansas	County Rank	Per 1000 or \$ Per Capita
2000	3	8,714	2,653	101	1.7
2001	4	8,692	2,593	95	2.4
2002	3	8,582	2,554	98	1.8
2003	3	8,642	2,568	101	1.8
2004	3	8,658	2,590	100	1.9
2005	3	8,685	2,553	98	2.0
2006	3	8,922	2,612	100	2.0
2007	4	8,938	2,574	94	2.7
2008	4	8,939	2,587	95	2.8
2009	2	8,848	2,551	104	1.4
2010	3	8,612	2,454	101	2.0
2011	2	8,668	2,540	104	1.3
2012	2	8,700	2,500	103	1.3
2013	2	8,870	2,541	104	1.3
2014	3	9,121	2,590	99	2.0
2015	3	9,374	2,664	101	2.0
2016	5	9,412	2,596	90	3.3
2017	5	9,487	2,638	85	3.3
2018	4	9,485	2,621	92	2.7
2019	4	9,485	2,591	91	2.6
2020	3	9,471	2,545	93	2.0

County: county value. Kansas: state value. County Rank: highest county value ranked #1. (\$000): thousands of dollars. Nonmetro Kansas: Kansas total less Metropolitan Areas as defined by the Office of Management and Budget (OMB; released 3/6/2020). Per 1000: For nonmoney amounts, Per 1000=(county value / county population for the same year as the data) x 1000. \$ Per capita=(county value / county population for the same year as the data). Value= . indicates missing or suppressed data or value not calculated.

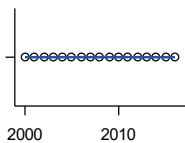
Business

**ESTABLISHMENTS: 100-499
EMPLOYEES**



U.S. Census Bureau, County Business Patterns. Beginning with the 2017 data, any tabulation with fewer than 3 establishments were omitted from the release. Data for these establishments are included in the broader total.

Year	County	State of Kansas	Non Metro Kansas	County Rank	Per 1000 or \$ Per Capita
2000	0	1,555	409	105	0.0
2001	0	1,555	406	105	0.0
2002	0	1,464	386	105	0.0
2003	0	1,470	378	105	0.0
2004	0	1,463	388	105	0.0
2005	0	1,537	400	105	0.0
2006	0	1,598	407	105	0.0
2007	0	1,602	416	105	0.0
2008	0	1,653	421	105	0.0
2009	0	1,551	394	105	0.0
2010	0	1,513	382	105	0.0
2011	0	1,523	395	105	0.0
2012	0	1,567	410	105	0.0
2013	0	1,581	407	105	0.0
2014	0	1,641	421	105	0.0
2015	0	1,693	414	105	0.0
2016	0	1,671	406	105	0.0



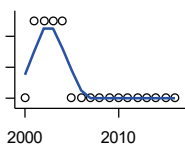
**ESTABLISHMENTS: 500 OR MORE
EMPLOYEES**

U.S. Census Bureau, County Business Patterns. Beginning with the 2017 data, any tabulation with fewer than 3 establishments were omitted from the release. Data for these establishments are included in the broader total.

Year	County	State of Kansas	Non Metro Kansas	County Rank	Per 1000 or \$ Per Capita
2000	0	143	32	105	0.0
2001	0	142	35	105	0.0
2002	0	145	35	105	0.0
2003	0	146	32	105	0.0
2004	0	152	36	105	0.0
2005	0	155	38	105	0.0
2006	0	162	45	105	0.0
2007	0	171	45	105	0.0
2008	0	182	49	105	0.0
2009	0	171	43	105	0.0
2010	0	161	46	105	0.0
2011	0	156	49	105	0.0
2012	0	158	49	105	0.0
2013	0	168	49	105	0.0
2014	0	180	52	105	0.0
2015	0	179	50	105	0.0
2016	0	171	53	105	0.0

County: county value. Kansas: state value. County Rank: highest county value ranked #1. (\$000): thousands of dollars. Nonmetro Kansas: Kansas total less Metropolitan Areas as defined by the Office of Management and Budget (OMB; released 3/6/2020). Per 1000: For nonmoney amounts, Per 1000=(county value / county population for the same year as the data) x 1000. \$ Per capita=(county value / county population for the same year as the data). Value= . indicates missing or suppressed data or value not calculated.

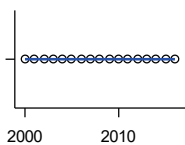
Business



ESTABLISHMENTS: FORESTRY, FISHING, HUNTING, AND AG SUPPORT

U.S. Census Bureau, County Business Patterns. Beginning with the 2017 data, any tabulation with fewer than 3 establishments were omitted from the release. Data for these establishments are included in the broader total.

Year	County	State of Kansas	Non Metro Kansas	County Rank	Per 1000 or \$ Per Capita
2000	1	190	149	74	0.6
2001	2	217	168	48	1.2
2002	2	224	176	56	1.2
2003	2	217	173	54	1.2
2004	2	211	165	53	1.3
2005	1	188	148	76	0.7
2006	1	193	158	76	0.7
2007	1	212	170	78	0.7
2008	1	197	158	81	0.7
2009	1	191	154	79	0.7
2010	1	192	161	79	0.7
2011	1	193	157	77	0.7
2012	1	204	164	85	0.7
2013	1	208	166	85	0.6
2014	1	194	152	83	0.7
2015	1	192	149	81	0.7
2016	1	181	142	80	0.7



ESTABLISHMENTS: MINING

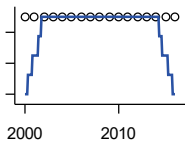
U.S. Census Bureau, County Business Patterns. Beginning with the 2017 data, any tabulation with fewer than 3 establishments were omitted from the release. Data for these establishments are included in the broader total.

Year	County	State of Kansas	Non Metro Kansas	County Rank	Per 1000 or \$ Per Capita
2000	0	868	619	105	0.0
2001	0	878	622	105	0.0
2002	0	847	615	105	0.0
2003	0	864	633	105	0.0
2004	0	880	647	105	0.0
2005	0	941	695	105	0.0
2006	0	991	734	105	0.0
2007	0	1,000	759	105	0.0
2008	0	1,047	799	105	0.0
2009	0	1,016	772	105	0.0
2010	0	1,009	762	105	0.0
2011	0	1,013	763	105	0.0
2012	0	1,048	789	105	0.0
2013	0	1,060	802	105	0.0
2014	0	1,102	828	105	0.0
2015	0	1,069	810	105	0.0
2016	0	990	747	105	0.0

County: county value. Kansas: state value. County Rank: highest county value ranked #1. (\$000): thousands of dollars. Nonmetro Kansas: Kansas total less Metropolitan Areas as defined by the Office of Management and Budget (OMB; released 3/6/2020). Per 1000: For nonmoney amounts, Per 1000=(county value / county population for the same year as the data) x 1000. \$ Per capita=(county value / county population for the same year as the data). Value= . indicates missing or suppressed data or value not calculated.

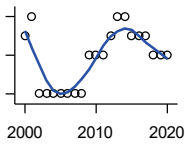
Business

ESTABLISHMENTS: UTILITIES



U.S. Census Bureau, County Business Patterns. Beginning with the 2017 data, any tabulation with fewer than 3 establishments were omitted from the release. Data for these establishments are included in the broader total.

Year	County	State of Kansas	Non Metro Kansas	County Rank	Per 1000 or \$ Per Capita
2000	2	274	192	68	1.1
2001	2	290	204	70	1.2
2002	2	278	195	64	1.2
2003	2	268	180	63	1.2
2004	2	247	164	59	1.3
2005	2	254	172	57	1.3
2006	2	248	169	58	1.3
2007	2	222	156	56	1.4
2008	2	244	166	61	1.4
2009	2	222	152	57	1.4
2010	2	197	129	49	1.3
2011	2	230	156	57	1.3
2012	2	232	156	57	1.3
2013	2	234	159	58	1.3
2014	2	232	160	58	1.3
2015	2	237	165	59	1.3
2016	2	245	171	60	1.3



ESTABLISHMENTS: CONSTRUCTION

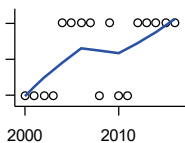
U.S. Census Bureau, County Business Patterns. Beginning with the 2017 data, any tabulation with fewer than 3 establishments were omitted from the release. Data for these establishments are included in the broader total.

Year	County	State of Kansas	Non Metro Kansas	County Rank	Per 1000 or \$ Per Capita
2000	4	7,703	2,616	101	2.3
2001	5	7,449	2,520	100	2.9
2002	1	7,519	2,482	105	0.6
2003	1	7,722	2,521	105	0.6
2004	1	7,887	2,518	105	0.6
2005	1	8,032	2,515	105	0.7
2006	1	8,031	2,494	105	0.7
2007	1	8,057	2,547	105	0.7
2008	1	7,831	2,522	105	0.7
2009	3	7,342	2,452	103	2.0
2010	3	7,064	2,394	103	2.0
2011	3	6,774	2,361	103	2.0
2012	4	6,741	2,393	101	2.6
2013	5	6,802	2,394	99	3.2
2014	5	6,920	2,383	100	3.3
2015	4	7,014	2,377	99	2.7
2016	4	6,988	2,343	100	2.7
2017	4	7,031	2,316	101	2.6
2018	3	7,124	2,285	102	2.0
2019	3	7,060	2,242	102	2.0
2020	3	7,089	2,249	102	2.0

County: county value. Kansas: state value. County Rank: highest county value ranked #1. (\$000): thousands of dollars. Nonmetro Kansas: Kansas total less Metropolitan Areas as defined by the Office of Management and Budget (OMB; released 3/6/2020). Per 1000: For nonmoney amounts, Per 1000=(county value / county population for the same year as the data) x 1000. \$ Per capita=(county value / county population for the same year as the data). Value= . indicates missing or suppressed data or value not calculated.

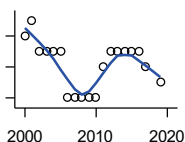
Business

**ESTABLISHMENTS:
MANUFACTURING**



U.S. Census Bureau, County Business Patterns. Beginning with the 2017 data, any tabulation with fewer than 3 establishments were omitted from the release. Data for these establishments are included in the broader total.

Year	County	State of Kansas	Non Metro Kansas	County Rank	Per 1000 or \$ Per Capita
2000	1	3,229	1,316	101	0.6
2001	1	3,240	1,323	102	0.6
2002	1	3,181	1,289	102	0.6
2003	1	3,159	1,291	104	0.6
2004	2	3,179	1,313	98	1.3
2005	2	3,128	1,278	97	1.3
2006	2	3,165	1,290	98	1.3
2007	2	3,184	1,316	98	1.4
2008	1	3,171	1,297	101	0.7
2009	2	3,026	1,240	97	1.4
2010	1	2,955	1,222	101	0.7
2011	1	2,877	1,193	101	0.7
2012	2	2,889	1,197	96	1.3
2013	2	2,836	1,165	94	1.3
2014	2	2,831	1,168	93	1.3
2015	2	2,817	1,161	93	1.3
2016	2	2,791	1,150	94	1.3



**ESTABLISHMENTS: WHOLESALE
TRADE**

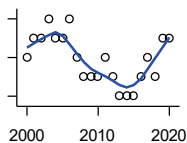
U.S. Census Bureau, County Business Patterns. Beginning with the 2017 data, any tabulation with fewer than 3 establishments were omitted from the release. Data for these establishments are included in the broader total.

Year	County	State of Kansas	Non Metro Kansas	County Rank	Per 1000 or \$ Per Capita
2000	7	4,876	1,776	98	4.0
2001	8	4,811	1,769	88	4.7
2002	6	4,719	1,750	95	3.6
2003	6	4,590	1,637	95	3.7
2004	6	4,553	1,634	95	3.8
2005	6	4,541	1,618	94	3.9
2006	3	4,517	1,596	100	2.0
2007	3	4,555	1,629	100	2.0
2008	3	4,501	1,622	100	2.1
2009	3	4,437	1,614	100	2.0
2010	3	4,432	1,612	100	2.0
2011	5	4,400	1,660	97	3.3
2012	6	4,563	1,755	95	3.9
2013	6	4,501	1,741	93	3.8
2014	6	4,497	1,746	92	4.0
2015	6	4,459	1,755	94	4.0
2016	6	4,457	1,732	92	4.0
2017	5	4,436	1,774	97	3.3
2019	4	4,291	1,713	99	2.6

County: county value. Kansas: state value. County Rank: highest county value ranked #1. (\$000): thousands of dollars. Nonmetro Kansas: Kansas total less Metropolitan Areas as defined by the Office of Management and Budget (OMB; released 3/6/2020). Per 1000: For nonmoney amounts, Per 1000=(county value / county population for the same year as the data) x 1000. \$ Per capita=(county value / county population for the same year as the data). Value= . indicates missing or suppressed data or value not calculated.

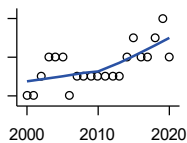
Business

ESTABLISHMENTS: RETAIL TRADE



U.S. Census Bureau, County Business Patterns. Beginning with the 2017 data, any tabulation with fewer than 3 establishments were omitted from the release. Data for these establishments are included in the broader total.

Year	County	State of Kansas	Non Metro Kansas	County Rank	Per 1000 or \$ Per Capita
2000	8	12,261	5,240	104	4.6
2001	9	12,206	5,207	103	5.3
2002	9	11,980	5,082	103	5.4
2003	10	11,834	5,049	103	6.2
2004	9	11,748	4,967	103	5.8
2005	9	11,562	4,834	103	5.9
2006	10	11,367	4,702	100	6.5
2007	8	11,306	4,653	103	5.4
2008	7	10,978	4,494	104	4.8
2009	7	10,760	4,372	104	4.8
2010	7	10,727	4,346	104	4.7
2011	8	10,655	4,289	102	5.2
2012	7	10,585	4,202	104	4.6
2013	6	10,433	4,147	105	3.8
2014	6	10,391	4,070	105	4.0
2015	6	10,327	4,061	105	4.0
2016	7	10,197	3,965	105	4.7
2017	8	10,074	3,885	102	5.3
2018	7	9,866	3,797	103	4.7
2019	9	9,762	3,750	100	5.9
2020	9	9,591	3,666	101	6.0



ESTABLISHMENTS: TRANSPORTATION & WAREHOUSING

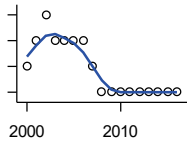
U.S. Census Bureau, County Business Patterns. Beginning with the 2017 data, any tabulation with fewer than 3 establishments were omitted from the release. Data for these establishments are included in the broader total.

Year	County	State of Kansas	Non Metro Kansas	County Rank	Per 1000 or \$ Per Capita
2000	1	2,474	1,293	105	0.6
2001	1	2,463	1,298	105	0.6
2002	2	2,461	1,278	103	1.2
2003	3	2,576	1,297	97	1.8
2004	3	2,651	1,324	99	1.9
2005	3	2,632	1,326	101	2.0
2006	1	2,626	1,295	104	0.7
2007	2	2,664	1,314	103	1.4
2008	2	2,675	1,329	102	1.4
2009	2	2,635	1,313	99	1.4
2010	2	2,615	1,313	101	1.3
2011	2	2,579	1,285	102	1.3
2012	2	2,519	1,243	101	1.3
2013	2	2,492	1,226	102	1.3
2014	3	2,518	1,240	99	2.0
2015	4	2,554	1,257	94	2.7
2016	3	2,567	1,241	99	2.0
2017	3	2,640	1,245	101	2.0
2018	4	2,627	1,238	94	2.7
2019	5	2,615	1,209	86	3.3
2020	3	2,589	1,179	99	2.0

County: county value. Kansas: state value. County Rank: highest county value ranked #1. (\$000): thousands of dollars. Nonmetro Kansas: Kansas total less Metropolitan Areas as defined by the Office of Management and Budget (OMB; released 3/6/2020). Per 1000: For nonmoney amounts, Per 1000=(county value / county population for the same year as the data) x 1000. \$ Per capita=(county value / county population for the same year as the data). Value= . indicates missing or suppressed data or value not calculated.

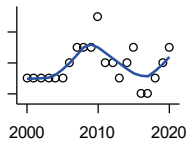
Business

ESTABLISHMENTS: INFORMATION



U.S. Census Bureau, County Business Patterns. Beginning with the 2017 data, any tabulation with fewer than 3 establishments were omitted from the release. Data for these establishments are included in the broader total.

Year	County	State of Kansas	Non Metro Kansas	County Rank	Per 1000 or \$ Per Capita
2000	2	1,542	578	98	1.1
2001	3	1,556	566	85	1.8
2002	4	1,517	551	67	2.4
2003	3	1,516	564	79	1.8
2004	3	1,518	556	74	1.9
2005	3	1,519	536	73	2.0
2006	3	1,549	559	78	2.0
2007	2	1,504	527	87	1.4
2008	1	1,468	522	101	0.7
2009	1	1,420	510	101	0.7
2010	1	1,437	527	102	0.7
2011	1	1,428	537	101	0.7
2012	1	1,387	515	102	0.7
2013	1	1,337	487	102	0.6
2014	1	1,335	496	103	0.7
2015	1	1,359	510	103	0.7
2016	1	1,431	537	103	0.7



ESTABLISHMENTS: FINANCE & INSURANCE

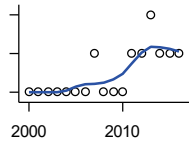
U.S. Census Bureau, County Business Patterns. Beginning with the 2017 data, any tabulation with fewer than 3 establishments were omitted from the release. Data for these establishments are included in the broader total.

Year	County	State of Kansas	Non Metro Kansas	County Rank	Per 1000 or \$ Per Capita
2000	4	5,209	1,848	102	2.3
2001	4	5,178	1,828	101	2.4
2002	4	5,496	1,911	99	2.4
2003	4	5,569	1,907	102	2.5
2004	4	5,572	1,913	102	2.6
2005	4	5,708	1,964	102	2.6
2006	5	5,877	1,976	100	3.3
2007	6	6,017	2,030	100	4.1
2008	6	6,010	2,023	98	4.1
2009	6	5,933	1,994	98	4.1
2010	8	5,872	1,975	88	5.4
2011	5	5,854	1,985	103	3.3
2012	5	5,993	2,024	104	3.3
2013	4	5,903	1,993	104	2.6
2014	5	5,894	2,000	103	3.3
2015	6	5,932	1,998	100	4.0
2016	3	6,022	2,021	105	2.0
2017	3	6,026	2,007	105	2.0
2018	4	6,023	1,997	105	2.7
2019	5	5,953	1,977	100	3.3
2020	6	5,926	1,969	97	4.0

County: county value. Kansas: state value. County Rank: highest county value ranked #1. (\$000): thousands of dollars. Nonmetro Kansas: Kansas total less Metropolitan Areas as defined by the Office of Management and Budget (OMB; released 3/6/2020). Per 1000: For nonmoney amounts, Per 1000=(county value / county population for the same year as the data) x 1000. \$ Per capita=(county value / county population for the same year as the data). Value= . indicates missing or suppressed data or value not calculated.

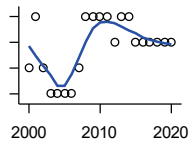
Business

ESTABLISHMENTS: REAL ESTATE, RENTAL, AND LEASING



U.S. Census Bureau, County Business Patterns. Beginning with the 2017 data, any tabulation with fewer than 3 establishments were omitted from the release. Data for these establishments are included in the broader total.

Year	County	State of Kansas	Non Metro Kansas	County Rank	Per 1000 or \$ Per Capita
2000	1	2,733	687	91	0.6
2001	1	2,849	724	92	0.6
2002	1	2,952	735	95	0.6
2003	1	3,007	727	93	0.6
2004	1	3,108	713	93	0.6
2005	1	3,203	727	90	0.7
2006	1	3,268	736	91	0.7
2007	2	3,286	721	71	1.4
2008	1	3,239	738	90	0.7
2009	1	3,122	723	89	0.7
2010	1	3,050	708	90	0.7
2011	2	3,002	692	74	1.3
2012	2	2,981	691	74	1.3
2013	3	3,046	717	64	1.9
2014	2	3,135	738	79	1.3
2015	2	3,179	744	79	1.3
2016	2	3,293	757	77	1.3



ESTABLISHMENTS: PROFESSIONAL, SCIENTIFIC, AND TECHNICAL SERVICES

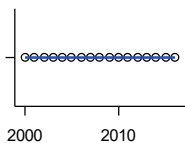
U.S. Census Bureau, County Business Patterns. Beginning with the 2017 data, any tabulation with fewer than 3 establishments were omitted from the release. Data for these establishments are included in the broader total.

Year	County	State of Kansas	Non Metro Kansas	County Rank	Per 1000 or \$ Per Capita
2000	2	6,424	1,690	105	1.1
2001	4	6,492	1,665	101	2.4
2002	2	6,719	1,704	105	1.2
2003	1	6,793	1,735	105	0.6
2004	1	7,025	1,730	105	0.6
2005	1	7,087	1,711	105	0.7
2006	1	7,231	1,736	105	0.7
2007	2	7,329	1,729	105	1.4
2008	4	7,133	1,671	98	2.8
2009	4	7,122	1,676	102	2.7
2010	4	7,172	1,680	101	2.7
2011	4	7,115	1,668	99	2.6
2012	3	7,122	1,681	105	2.0
2013	4	7,129	1,698	97	2.6
2014	4	7,206	1,682	98	2.7
2015	3	7,184	1,687	102	2.0
2016	3	7,146	1,659	101	2.0
2017	3	7,224	1,679	101	2.0
2018	3	7,138	1,655	103	2.0
2019	3	7,119	.	101	2.0
2020	3	7,117	.	100	2.0

County: county value. Kansas: state value. County Rank: highest county value ranked #1. (\$000): thousands of dollars. Nonmetro Kansas: Kansas total less Metropolitan Areas as defined by the Office of Management and Budget (OMB; released 3/6/2020). Per 1000: For nonmoney amounts, Per 1000=(county value / county population for the same year as the data) x 1000. \$ Per capita=(county value / county population for the same year as the data). Value= . indicates missing or suppressed data or value not calculated.

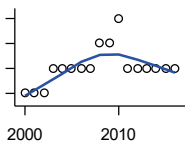
Business

ESTABLISHMENTS: MANAGEMENT OF COMPANIES AND ENTERPRISES



U.S. Census Bureau, County Business Patterns. Beginning with the 2017 data, any tabulation with fewer than 3 establishments were omitted from the release. Data for these establishments are included in the broader total.

Year	County	State of Kansas	Non Metro Kansas	County Rank	Per 1000 or \$ Per Capita
2000	0	622	145	105	0.0
2001	0	593	141	105	0.0
2002	0	597	152	105	0.0
2003	0	561	135	105	0.0
2004	0	569	133	105	0.0
2005	0	543	127	105	0.0
2006	0	542	131	105	0.0
2007	0	550	133	105	0.0
2008	0	553	139	105	0.0
2009	0	575	136	105	0.0
2010	0	567	131	105	0.0
2011	0	552	134	105	0.0
2012	0	593	135	105	0.0
2013	0	590	135	105	0.0
2014	0	603	136	105	0.0
2015	0	613	140	105	0.0
2016	0	655	171	105	0.0



ESTABLISHMENTS: ADMIN, SUPPORT, WASTE MGMT., AND REMEDIATION

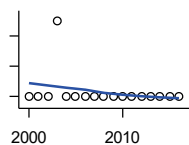
U.S. Census Bureau, County Business Patterns. Beginning with the 2017 data, any tabulation with fewer than 3 establishments were omitted from the release. Data for these establishments are included in the broader total.

Year	County	State of Kansas	Non Metro Kansas	County Rank	Per 1000 or \$ Per Capita
2000	1	3,307	871	101	0.6
2001	1	3,421	913	99	0.6
2002	1	3,232	882	99	0.6
2003	2	3,189	858	88	1.2
2004	2	3,301	891	92	1.3
2005	2	3,342	896	91	1.3
2006	2	3,395	886	93	1.3
2007	2	3,522	921	94	1.4
2008	3	3,587	932	85	2.1
2009	3	3,505	904	85	2.0
2010	4	3,494	897	78	2.7
2011	2	3,447	903	90	1.3
2012	2	3,462	891	90	1.3
2013	2	3,489	904	90	1.3
2014	2	3,569	933	89	1.3
2015	2	3,630	964	91	1.3
2016	2	3,705	987	90	1.3

County: county value. Kansas: state value. County Rank: highest county value ranked #1. (\$000): thousands of dollars. Nonmetro Kansas: Kansas total less Metropolitan Areas as defined by the Office of Management and Budget (OMB; released 3/6/2020). Per 1000: For nonmoney amounts, Per 1000=(county value / county population for the same year as the data) x 1000. \$ Per capita=(county value / county population for the same year as the data). Value= . indicates missing or suppressed data or value not calculated.

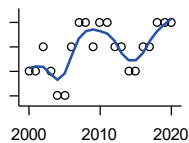
Business

ESTABLISHMENTS: EDUCATIONAL SERVICES



U.S. Census Bureau, County Business Patterns. Beginning with the 2017 data, any tabulation with fewer than 3 establishments were omitted from the release. Data for these establishments are included in the broader total.

Year	County	State of Kansas	Non Metro Kansas	County Rank	Per 1000 or \$ Per Capita
2000	0	604	155	105	0.0
2001	0	625	168	105	0.0
2002	0	666	165	105	0.0
2003	1	663	173	73	0.6
2004	0	690	173	105	0.0
2005	0	699	168	105	0.0
2006	0	698	175	105	0.0
2007	0	691	165	105	0.0
2008	0	692	158	105	0.0
2009	0	690	150	105	0.0
2010	0	700	149	105	0.0
2011	0	711	150	105	0.0
2012	0	724	145	105	0.0
2013	0	735	153	105	0.0
2014	0	722	152	105	0.0
2015	0	754	152	105	0.0
2016	0	728	150	105	0.0



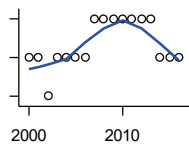
ESTABLISHMENTS: HEALTH CARE AND SOCIAL ASSISTANCE

U.S. Census Bureau, County Business Patterns. Beginning with the 2017 data, any tabulation with fewer than 3 establishments were omitted from the release. Data for these establishments are included in the broader total.

Year	County	State of Kansas	Non Metro Kansas	County Rank	Per 1000 or \$ Per Capita
2000	3	6,564	2,591	105	1.7
2001	3	6,636	2,590	105	1.8
2002	4	7,052	2,777	103	2.4
2003	3	7,129	2,792	103	1.8
2004	2	7,239	2,813	105	1.3
2005	2	7,412	2,855	105	1.3
2006	4	7,477	2,860	103	2.6
2007	5	7,661	2,864	101	3.4
2008	5	7,651	2,810	101	3.5
2009	4	7,696	2,787	101	2.7
2010	5	7,751	2,830	101	3.4
2011	5	7,804	2,817	100	3.3
2012	4	7,973	2,793	102	2.6
2013	4	7,877	2,729	101	2.6
2014	3	7,809	2,686	104	2.0
2015	3	8,103	2,692	103	2.0
2016	4	8,315	2,678	102	2.7
2017	4	8,136	2,646	102	2.6
2018	5	8,126	2,632	97	3.4
2019	5	8,184	2,587	97	3.3
2020	5	8,290	2,571	97	3.3

County: county value. Kansas: state value. County Rank: highest county value ranked #1. (\$000): thousands of dollars. Nonmetro Kansas: Kansas total less Metropolitan Areas as defined by the Office of Management and Budget (OMB; released 3/6/2020). Per 1000: For nonmoney amounts, Per 1000=(county value / county population for the same year as the data) x 1000. \$ Per capita=(county value / county population for the same year as the data). Value= . indicates missing or suppressed data or value not calculated.

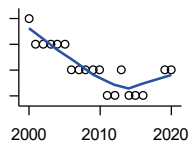
Business



ESTABLISHMENTS: ARTS, ENTERTAINMENT, AND RECREATION

U.S. Census Bureau, County Business Patterns. Beginning with the 2017 data, any tabulation with fewer than 3 establishments were omitted from the release. Data for these establishments are included in the broader total.

Year	County	State of Kansas	Non Metro Kansas	County Rank	Per 1000 or \$ Per Capita
2000	2	981	419	84	1.1
2001	2	1,009	433	87	1.2
2002	1	1,054	441	100	0.6
2003	2	1,045	443	89	1.2
2004	2	1,082	445	85	1.3
2005	2	1,109	446	86	1.3
2006	2	1,080	445	86	1.3
2007	3	1,092	444	71	2.0
2008	3	1,062	423	68	2.1
2009	3	1,063	421	67	2.0
2010	3	1,018	406	65	2.0
2011	3	997	387	67	2.0
2012	3	1,000	388	65	2.0
2013	3	1,009	377	64	1.9
2014	2	1,030	365	83	1.3
2015	2	1,031	357	83	1.3
2016	2	1,060	366	82	1.3



ESTABLISHMENTS: ACCOMMODATION AND FOOD SERVICES

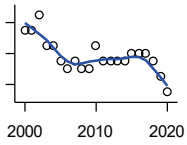
U.S. Census Bureau, County Business Patterns. Beginning with the 2017 data, any tabulation with fewer than 3 establishments were omitted from the release. Data for these establishments are included in the broader total.

Year	County	State of Kansas	Non Metro Kansas	County Rank	Per 1000 or \$ Per Capita
2000	5	5,536	2,213	99	2.9
2001	4	5,551	2,173	101	2.4
2002	4	5,610	2,174	103	2.4
2003	4	5,635	2,188	103	2.5
2004	4	5,681	2,160	101	2.6
2005	4	5,776	2,170	103	2.6
2006	3	5,745	2,132	103	2.0
2007	3	5,877	2,095	104	2.0
2008	3	5,843	2,052	103	2.1
2009	3	5,794	2,029	103	2.0
2010	3	5,898	2,046	104	2.0
2011	2	5,958	2,067	105	1.3
2012	2	5,951	2,046	105	1.3
2013	3	6,061	2,070	103	1.9
2014	2	5,985	2,024	104	1.3
2015	2	6,034	2,063	104	1.3
2016	2	6,126	2,094	104	1.3
2019	3	6,231	2,131	102	2.0
2020	3	6,206	2,131	103	2.0

County: county value. Kansas: state value. County Rank: highest county value ranked #1. (\$000): thousands of dollars. Nonmetro Kansas: Kansas total less Metropolitan Areas as defined by the Office of Management and Budget (OMB; released 3/6/2020). Per 1000: For nonmoney amounts, Per 1000=(county value / county population for the same year as the data) x 1000. \$ Per capita=(county value / county population for the same year as the data). Value= . indicates missing or suppressed data or value not calculated.

Business

ESTABLISHMENTS: OTHER SERVICES

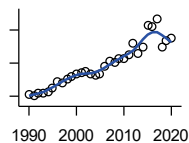


U.S. Census Bureau, County Business Patterns. Beginning with the 2017 data, any tabulation with fewer than 3 establishments were omitted from the release. Data for these establishments are included in the broader total.

Year	County	State of Kansas	Non Metro Kansas	County Rank	Per 1000 or \$ Per Capita
2000	15	8,423	3,636	87	8.6
2001	15	8,310	3,614	87	8.8
2002	17	8,552	3,658	82	10.2
2003	13	8,411	3,605	92	8.0
2004	13	8,343	3,597	92	8.3
2005	11	8,321	3,571	97	7.2
2006	10	8,225	3,490	99	6.5
2007	11	8,355	3,534	99	7.4
2008	10	8,104	3,406	100	6.9
2009	10	8,040	3,405	100	6.8
2010	13	7,998	3,379	94	8.8
2011	11	7,883	3,294	99	7.2
2012	11	7,913	3,303	95	7.2
2013	11	7,947	3,290	97	7.1
2014	11	7,943	3,285	97	7.3
2015	12	7,869	3,255	92	8.0
2016	12	7,839	3,204	94	8.0
2017	12	7,873	3,189	92	7.9
2018	11	7,853	3,176	95	7.4
2019	9	7,834	3,138	100	5.9
2020	7	7,787	3,073	105	4.6

County: county value. Kansas: state value. County Rank: highest county value ranked #1. (\$000): thousands of dollars. Nonmetro Kansas: Kansas total less Metropolitan Areas as defined by the Office of Management and Budget (OMB; released 3/6/2020). Per 1000: For nonmoney amounts, Per 1000=(county value / county population for the same year as the data) x 1000. \$ Per capita=(county value / county population for the same year as the data). Value= . indicates missing or suppressed data or value not calculated.

Business



**TOTAL ANNUAL PAYROLL (\$000)
COUNTY BUSINESS PATTERNS**

U.S. Census Bureau, County Business Patterns. Beginning with the 2017 data, any tabulation with fewer than 3 establishments were omitted from the release. Data for these establishments are included in the broader total.

Year	County	State of Kansas	Non Metro Kansas	County Rank	Per 1000 or \$ Per Capita
1990	2,809	17,487,316	4,442,429	103	1,542.6
1991	2,532	18,162,326	4,612,616	104	1,375.3
1992	2,929	19,244,346	4,882,060	103	1,606.7
1993	3,005	20,087,190	5,182,780	104	1,646.6
1994	3,166	21,201,652	5,541,423	104	1,748.2
1995	3,751	22,825,920	5,875,310	104	2,085.0
1996	4,701	24,613,884	6,198,398	103	2,614.6
1997	4,567	26,787,098	6,599,061	103	2,531.6
1998	5,092	28,747,576	6,871,794	104	2,827.3
1999	5,422	30,600,434	7,121,961	104	3,034.1
2000	5,834	31,990,762	7,520,424	103	3,335.6
2001	6,056	33,303,992	7,598,165	103	3,572.9
2002	6,241	33,152,962	7,572,002	102	3,734.9
2003	5,786	34,040,944	7,726,561	103	3,565.0
2004	5,716	35,725,812	8,303,779	103	3,659.4
2005	5,812	36,646,064	8,586,986	104	3,796.2
2006	7,030	39,251,388	9,178,947	103	4,603.8
2007	7,880	42,022,753	.	101	5,320.7
2008	7,543	43,984,689	.	101	5,212.9
2009	8,178	42,146,866	.	100	5,567.1
2010	8,204	42,686,303	10,294,015	101	5,524.6
2011	8,709	43,733,944	.	100	5,707.1
2012	10,518	45,608,072	11,222,183	100	6,906.1
2013	8,976	47,715,601	11,446,751	102	5,753.8
2014	9,928	49,712,832	11,957,931	100	6,614.3
2015	13,216	51,259,676	11,975,718	97	8,781.4
2016	13,103	51,016,318	12,148,646	98	8,723.7
2017	14,187	52,754,605	12,448,592	96	9,364.4
2018	9,889	55,087,460	12,810,270	103	6,641.4
2019	10,961	57,272,387	13,123,288	103	7,220.7
2020	11,205	58,374,388	14,007,955	103	7,410.7

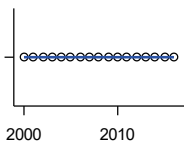
County: county value. Kansas: state value. County Rank: highest county value ranked #1. (\$000): thousands of dollars. Nonmetro Kansas: Kansas total less Metropolitan Areas as defined by the Office of Management and Budget (OMB; released 3/6/2020). Per 1000: For nonmoney amounts, Per 1000=(county value / county population for the same year as the data) x 1000. \$ Per capita=(county value / county population for the same year as the data). Value= . indicates missing or suppressed data or value not calculated.

Business

**TOTAL ANNUAL PAYROLL(\$000):
FORESTRY, FISHING, HUNTING, AND
AG SUPPORT**

U.S. Census Bureau, County Business Patterns. Beginning with the 2017 data, any tabulation with fewer than 3 establishments were omitted from the release. Data for these establishments are included in the broader total.

Year	County	State of Kansas	Non Metro Kansas	County Rank	Per 1000 or \$ Per Capita
2000	.	13,551	.	.	.
2001
2002	.	16,528	.	.	.
2003	.	17,247	.	.	.
2004	.	17,552	.	.	.
2005	.	16,298	.	.	.
2006	.	17,908	.	.	.
2007	.	22,199	.	.	.
2008	.	21,359	.	.	.
2009	.	22,466	.	.	.
2010	.	22,753	.	.	.
2011	.	23,320	.	.	.
2012	.	27,492	.	.	.
2013	.	30,360	.	.	.
2014	.	34,862	.	.	.
2015	.	35,980	.	.	.



**TOTAL ANNUAL PAYROLL(\$000):
MINING**

U.S. Census Bureau, County Business Patterns. Beginning with the 2017 data, any tabulation with fewer than 3 establishments were omitted from the release. Data for these establishments are included in the broader total.

Year	County	State of Kansas	Non Metro Kansas	County Rank	Per 1000 or \$ Per Capita
2000	0	240,079	.	.	0.0
2001	0	273,838	.	.	0.0
2002	0	262,277	.	.	0.0
2003	0	290,652	.	.	0.0
2004	0	326,997	.	.	0.0
2005	0	381,069	.	.	0.0
2006	0	482,102	.	.	0.0
2007	0	551,751	.	.	0.0
2008	0	620,446	.	.	0.0
2009	0	465,070	.	.	0.0
2010	0	485,841	.	.	0.0
2011	0	541,536	.	.	0.0
2012	0	600,402	.	.	0.0
2013	0	599,788	.	.	0.0
2014	0	678,673	.	.	0.0
2015	0	552,658	.	.	0.0
2016	0	428,767	.	.	0.0

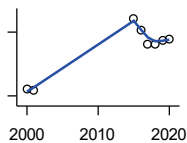
County: county value. Kansas: state value. County Rank: highest county value ranked #1. (\$000): thousands of dollars. Nonmetro Kansas: Kansas total less Metropolitan Areas as defined by the Office of Management and Budget (OMB; released 3/6/2020). Per 1000: For nonmoney amounts, Per 1000=(county value / county population for the same year as the data) x 1000. \$ Per capita=(county value / county population for the same year as the data). Value= . indicates missing or suppressed data or value not calculated.

Business

**TOTAL ANNUAL PAYROLL(\$000):
UTILITIES**

U.S. Census Bureau, County Business Patterns. Beginning with the 2017 data, any tabulation with fewer than 3 establishments were omitted from the release. Data for these establishments are included in the broader total.

Year	County	State of Kansas	Non Metro Kansas	County Rank	Per 1000 or \$ Per Capita
2000	.	410,313	.	.	.
2001	.	452,057	.	.	.
2002	.	377,559	.	.	.
2003	.	378,157	.	.	.
2004	.	377,809	.	.	.
2005	.	429,864	.	.	.
2006	.	443,999	.	.	.
2007	.	480,068	.	.	.
2008	.	541,066	.	.	.
2009	.	563,373	.	.	.
2010	.	512,628	.	.	.
2011	.	653,229	.	.	.
2012	.	625,451	.	.	.
2013	.	625,347	.	.	.
2014	.	610,960	.	.	.
2015	.	668,559	.	.	.



**TOTAL ANNUAL PAYROLL(\$000):
CONSTRUCTION**

U.S. Census Bureau, County Business Patterns. Beginning with the 2017 data, any tabulation with fewer than 3 establishments were omitted from the release. Data for these establishments are included in the broader total.

Year	County	State of Kansas	Non Metro Kansas	County Rank	Per 1000 or \$ Per Capita
2000	16	2,256,057	.	.	9.1
2001	14	2,320,652	.	.	8.3
2002	.	2,302,229	.	.	.
2003	.	2,282,021	.	.	.
2004	.	2,302,854	.	.	.
2005	.	2,465,977	.	.	.
2006	.	2,700,351	.	.	.
2007	.	2,772,168	.	.	.
2008	.	2,950,073	.	.	.
2009	.	2,709,864	.	.	.
2010	.	2,553,555	.	.	.
2011	.	2,550,355	.	.	.
2012	.	2,733,284	.	.	.
2013	.	2,866,801	.	.	.
2014	.	3,135,814	.	.	.
2015	182	3,270,952	.	.	120.9
2016	156	3,328,610	.	.	103.9
2017	122	3,568,505	.	.	80.5
2018	121	3,806,196	.	.	81.3
2019	130	3,879,912	.	.	85.6
2020	135	3,983,029	.	.	89.3

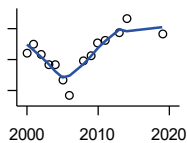
County: county value. Kansas: state value. County Rank: highest county value ranked #1. (\$000): thousands of dollars. Nonmetro Kansas: Kansas total less Metropolitan Areas as defined by the Office of Management and Budget (OMB; released 3/6/2020). Per 1000: For nonmoney amounts, Per 1000=(county value / county population for the same year as the data) x 1000. \$ Per capita=(county value / county population for the same year as the data). Value= . indicates missing or suppressed data or value not calculated.

Business

**TOTAL ANNUAL PAYROLL(\$000):
MANUFACTURING**

U.S. Census Bureau, County Business Patterns. Beginning with the 2017 data, any tabulation with fewer than 3 establishments were omitted from the release. Data for these establishments are included in the broader total.

Year	County	State of Kansas	Non Metro Kansas	County Rank	Per 1000 or \$ Per Capita
2000	.	7,015,414	.	.	.
2001	.	7,301,706	.	.	.
2002	.	6,802,605	.	.	.
2003	.	6,691,611	.	.	.
2004	.	6,985,656	.	.	.
2005	.	7,221,614	.	.	.
2006	.	7,621,873	.	.	.
2007	.	7,873,359	.	.	.
2008	.	8,441,541	.	.	.
2009	.	7,477,838	.	.	.
2010	.	7,556,955	.	.	.
2011	.	7,747,934	.	.	.
2012	.	7,704,851	.	.	.
2013	.	8,365,542	.	.	.
2014	.	8,787,306	.	.	.
2015	.	9,052,105	.	.	.



**TOTAL ANNUAL PAYROLL(\$000):
WHOLESALE TRADE**

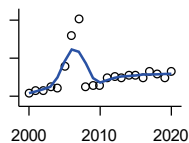
U.S. Census Bureau, County Business Patterns. Beginning with the 2017 data, any tabulation with fewer than 3 establishments were omitted from the release. Data for these establishments are included in the broader total.

Year	County	State of Kansas	Non Metro Kansas	County Rank	Per 1000 or \$ Per Capita
2000	2,225	2,332,755	.	.	1,272.2
2001	2,515	2,283,169	.	.	1,483.8
2002	2,171	2,107,653	.	.	1,299.2
2003	1,819	2,622,701	.	.	1,120.8
2004	1,852	2,663,196	.	.	1,185.7
2005	1,330	2,345,990	.	.	868.7
2006	825	2,592,211	.	.	540.3
2007	.	2,682,542	.	.	.
2008	1,964	3,078,655	.	.	1,357.3
2009	2,107	2,940,949	.	.	1,434.3
2010	2,534	3,097,628	.	.	1,706.4
2011	2,629	3,305,811	.	.	1,722.8
2012	.	3,339,997	.	.	.
2013	2,878	3,460,512	.	.	1,844.9
2014	3,328	3,712,075	.	.	2,217.2
2015	.	3,760,189	.	.	.
2019	2,845	4,025,802	.	.	1,874.2

County: county value. Kansas: state value. County Rank: highest county value ranked #1. (\$000): thousands of dollars. Nonmetro Kansas: Kansas total less Metropolitan Areas as defined by the Office of Management and Budget (OMB; released 3/6/2020). Per 1000: For nonmoney amounts, Per 1000=(county value / county population for the same year as the data) x 1000. \$ Per capita=(county value / county population for the same year as the data). Value= . indicates missing or suppressed data or value not calculated.

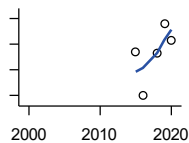
Business

**TOTAL ANNUAL PAYROLL(\$000):
RETAIL TRADE**



U.S. Census Bureau, County Business Patterns. Beginning with the 2017 data, any tabulation with fewer than 3 establishments were omitted from the release. Data for these establishments are included in the broader total.

Year	County	State of Kansas	Non Metro Kansas	County Rank	Per 1000 or \$ Per Capita
2000	596	2,747,001	.	.	340.8
2001	646	2,813,226	.	.	381.1
2002	633	2,854,231	.	.	378.8
2003	742	2,773,674	.	.	457.2
2004	698	2,847,826	.	.	446.9
2005	1,284	2,952,196	.	.	838.7
2006	2,098	3,126,495	.	.	1,373.9
2007	2,534	3,201,169	.	.	1,711.0
2008	762	3,261,054	.	.	526.6
2009	790	3,232,246	.	.	537.8
2010	789	3,321,838	.	.	531.3
2011	977	3,384,607	.	.	640.2
2012	1,026	3,409,755	.	.	673.7
2013	980	3,483,752	.	.	628.2
2014	1,063	3,617,933	.	.	708.2
2015	1,057	3,712,165	.	.	702.3
2016	996	3,826,889	.	.	663.1
2017	1,161	3,797,849	.	.	766.3
2018	1,087	3,818,988	.	.	730.0
2019	987	3,908,994	.	.	650.2
2020	1,141	3,984,443	.	.	754.6



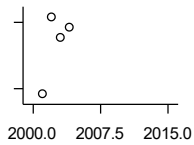
**TOTAL ANNUAL PAYROLL(\$000):
TRANSPORTATION &
WAREHOUSING**

U.S. Census Bureau, County Business Patterns. Beginning with the 2017 data, any tabulation with fewer than 3 establishments were omitted from the release. Data for these establishments are included in the broader total.

Year	County	State of Kansas	Non Metro Kansas	County Rank	Per 1000 or \$ Per Capita
2000	.	1,044,835	.	.	.
2001	.	1,089,405	.	.	.
2002	.	1,094,636	.	.	.
2003	.	1,316,655	.	.	.
2004	.	1,439,800	.	.	.
2005	.	1,393,651	.	.	.
2006	.	1,528,551	.	.	.
2007	.	1,788,267	.	.	.
2008	.	1,722,697	.	.	.
2009	.	1,618,598	.	.	.
2010	.	1,735,761	.	.	.
2011	.	1,739,165	.	.	.
2012	.	1,984,976	.	.	.
2013	.	2,006,261	.	.	.
2014	.	2,097,377	.	.	.
2015	134	2,190,072	.	.	89.0
2016	49	2,202,859	.	.	32.6
2018	133	2,663,188	.	.	89.3
2019	190	2,879,406	.	.	125.2
2020	157	2,962,461	.	.	103.8

County: county value. Kansas: state value. County Rank: highest county value ranked #1. (\$000): thousands of dollars. Nonmetro Kansas: Kansas total less Metropolitan Areas as defined by the Office of Management and Budget (OMB; released 3/6/2020). Per 1000: For nonmoney amounts, Per 1000=(county value / county population for the same year as the data) x 1000. \$ Per capita=(county value / county population for the same year as the data). Value= . indicates missing or suppressed data or value not calculated.

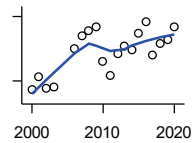
Business



**TOTAL ANNUAL PAYROLL(\$000):
INFORMATION**

U.S. Census Bureau, County Business Patterns. Beginning with the 2017 data, any tabulation with fewer than 3 establishments were omitted from the release. Data for these establishments are included in the broader total.

Year	County	State of Kansas	Non Metro Kansas	County Rank	Per 1000 or \$ Per Capita
2000	.	1,923,381	.	.	.
2001	175	2,218,610	.	.	103.2
2002	245	2,298,108	.	.	146.6
2003	226	2,378,673	.	.	139.2
2004	236	2,392,990	.	.	151.1
2005	.	2,395,081	.	.	.
2006	.	2,586,483	.	.	.
2007	.	2,594,138	.	.	.
2008	.	3,043,244	.	.	.
2009	.	3,045,570	.	.	.
2010	.	2,481,580	.	.	.
2011	.	2,513,805	.	.	.
2012	.	2,535,555	.	.	.
2013	.	2,805,017	.	.	.
2014	.	2,393,609	.	.	.
2015	.	2,406,323	.	.	.



**TOTAL ANNUAL PAYROLL(\$000):
FINANCE & INSURANCE**

U.S. Census Bureau, County Business Patterns. Beginning with the 2017 data, any tabulation with fewer than 3 establishments were omitted from the release. Data for these establishments are included in the broader total.

Year	County	State of Kansas	Non Metro Kansas	County Rank	Per 1000 or \$ Per Capita
2000	515	2,083,565	.	.	294.5
2001	637	2,129,587	.	.	375.8
2002	527	2,414,120	.	.	315.4
2003	545	2,608,579	.	.	335.8
2004	.	2,676,910	.	.	.
2005	.	2,786,136	.	.	.
2006	902	2,928,931	.	.	590.7
2007	1,024	3,096,017	.	.	691.4
2008	1,072	3,322,977	.	.	740.8
2009	1,101	3,206,839	.	.	749.5
2010	780	3,211,300	.	.	525.3
2011	649	3,404,633	.	.	425.3
2012	850	3,611,165	.	.	558.1
2013	929	3,896,051	.	.	595.5
2014	887	4,044,315	.	.	590.9
2015	1,050	4,113,060	.	.	697.7
2016	1,154	4,180,740	.	.	768.3
2017	844	4,258,057	.	.	557.1
2018	952	4,682,552	.	.	639.4
2019	982	4,814,201	.	.	646.9
2020	1,103	5,288,529	.	.	729.5

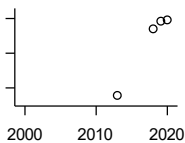
County: county value. Kansas: state value. County Rank: highest county value ranked #1. (\$000): thousands of dollars. Nonmetro Kansas: Kansas total less Metropolitan Areas as defined by the Office of Management and Budget (OMB; released 3/6/2020). Per 1000: For nonmoney amounts, Per 1000=(county value / county population for the same year as the data) x 1000. \$ Per capita=(county value / county population for the same year as the data). Value= . indicates missing or suppressed data or value not calculated.

Business

**TOTAL ANNUAL PAYROLL(\$000):
REAL ESTATE, RENTAL, AND
LEASING**

U.S. Census Bureau, County Business Patterns. Beginning with the 2017 data, any tabulation with fewer than 3 establishments were omitted from the release. Data for these establishments are included in the broader total.

Year	County	State of Kansas	Non Metro Kansas	County Rank	Per 1000 or \$ Per Capita
2000	.	360,637	.	.	.
2001	.	397,371	.	.	.
2002	.	403,695	.	.	.
2003	.	437,786	.	.	.
2004	.	430,719	.	.	.
2005	.	465,149	.	.	.
2006	.	478,811	.	.	.
2007	.	452,969	.	.	.
2008	.	484,149	.	.	.
2009	.	450,884	.	.	.
2010	.	487,255	.	.	.
2011	.	535,120	.	.	.
2012	.	531,039	.	.	.
2013	.	538,796	.	.	.
2014	.	542,307	.	.	.
2015	.	595,030	.	.	.



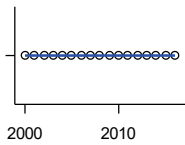
**TOTAL ANNUAL PAYROLL(\$000):
PROFESSIONAL, SCIENTIFIC, AND
TECHNICAL SERVICES**

U.S. Census Bureau, County Business Patterns. Beginning with the 2017 data, any tabulation with fewer than 3 establishments were omitted from the release. Data for these establishments are included in the broader total.

Year	County	State of Kansas	Non Metro Kansas	County Rank	Per 1000 or \$ Per Capita
2000	.	2,057,313	.	.	.
2001	.	2,152,937	.	.	.
2002	.	2,150,085	.	.	.
2003	.	2,052,712	.	.	.
2004	.	2,531,457	.	.	.
2005	.	2,418,500	.	.	.
2006	.	2,655,690	.	.	.
2007	.	2,901,544	.	.	.
2008	.	2,903,802	.	.	.
2009	.	3,071,611	.	.	.
2010	.	3,037,182	.	.	.
2011	.	3,132,082	.	.	.
2012	.	3,455,548	.	.	.
2013	427	3,777,729	.	.	273.7
2014	.	3,981,580	.	.	.
2015	.	4,039,074	.	.	.
2018	622	4,314,317	.	.	417.7
2019	643	4,646,644	.	.	423.6
2020	647	4,927,611	.	.	427.9

County: county value. Kansas: state value. County Rank: highest county value ranked #1. (\$000): thousands of dollars. Nonmetro Kansas: Kansas total less Metropolitan Areas as defined by the Office of Management and Budget (OMB; released 3/6/2020). Per 1000: For nonmoney amounts, Per 1000=(county value / county population for the same year as the data) x 1000. \$ Per capita=(county value / county population for the same year as the data). Value= . indicates missing or suppressed data or value not calculated.

Business



**TOTAL ANNUAL PAYROLL(\$000):
MANAGEMENT OF COMPANIES AND
ENTERPRISES**

U.S. Census Bureau, County Business Patterns. Beginning with the 2017 data, any tabulation with fewer than 3 establishments were omitted from the release. Data for these establishments are included in the broader total.

Year	County	State of Kansas	Non Metro Kansas	County Rank	Per 1000 or \$ Per Capita
2000	0	1,362,735	.	.	0.0
2001	0	1,279,253	.	.	0.0
2002	0	1,311,368	.	.	0.0
2003	0	1,352,119	.	.	0.0
2004	0	1,378,891	.	.	0.0
2005	0	1,510,876	.	.	0.0
2006	0	1,626,320	.	.	0.0
2007	0	2,233,654	.	.	0.0
2008	0	1,848,656	.	.	0.0
2009	0	1,601,158	.	.	0.0
2010	0	2,003,048	.	.	0.0
2011	0	1,677,619	.	.	0.0
2012	0	1,834,430	.	.	0.0
2013	0	1,938,100	.	.	0.0
2014	0	2,117,232	.	.	0.0
2015	0	2,451,126	.	.	0.0
2016	0	2,167,620	.	.	0.0

**TOTAL ANNUAL PAYROLL(\$000):
ADMIN, SUPPORT, WASTE MGMT.,
AND REMEDIATION**

U.S. Census Bureau, County Business Patterns. Beginning with the 2017 data, any tabulation with fewer than 3 establishments were omitted from the release. Data for these establishments are included in the broader total.

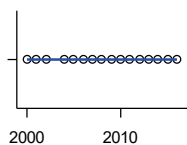
Year	County	State of Kansas	Non Metro Kansas	County Rank	Per 1000 or \$ Per Capita
2000	.	1,388,712	.	.	.
2001	.	1,416,480	.	.	.
2002	.	1,378,905	.	.	.
2003	.	1,387,061	.	.	.
2004	.	1,544,442	.	.	.
2005	.	1,694,687	.	.	.
2006	.	1,800,846	.	.	.
2007	.	1,978,025	.	.	.
2008	.	2,096,864	.	.	.
2009	.	1,832,540	.	.	.
2010	.	2,117,325	.	.	.
2011	.	2,114,970	.	.	.
2012	.	2,230,250	.	.	.
2013	.	2,214,320	.	.	.
2014	.	2,444,170	.	.	.
2015	.	2,577,592	.	.	.

County: county value. Kansas: state value. County Rank: highest county value ranked #1. (\$000): thousands of dollars. Nonmetro Kansas: Kansas total less Metropolitan Areas as defined by the Office of Management and Budget (OMB; released 3/6/2020). Per 1000: For nonmoney amounts, Per 1000=(county value / county population for the same year as the data) x 1000. \$ Per capita=(county value / county population for the same year as the data). Value= . indicates missing or suppressed data or value not calculated.

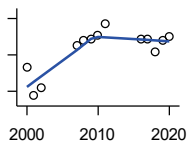
Business

**TOTAL ANNUAL PAYROLL(\$000):
EDUCATIONAL SERVICES**

Year	County	State of Kansas	Non Metro Kansas	County Rank	Per 1000 or \$ Per Capita
2000	0	299,843	.	.	0.0
2001	0	320,606	.	.	0.0
2002	0	353,531	.	.	0.0
2003	.	350,814	.	.	.
2004	0	361,644	.	.	0.0
2005	0	375,781	.	.	0.0
2006	0	400,565	.	.	0.0
2007	0	414,233	.	.	0.0
2008	0	463,210	.	.	0.0
2009	0	468,856	.	.	0.0
2010	0	487,670	.	.	0.0
2011	0	504,964	.	.	0.0
2012	0	508,448	.	.	0.0
2013	0	553,995	.	.	0.0
2014	0	612,073	.	.	0.0
2015	0	579,794	.	.	0.0
2016	0	571,582	.	.	0.0



U.S. Census Bureau, County Business Patterns. Beginning with the 2017 data, any tabulation with fewer than 3 establishments were omitted from the release. Data for these establishments are included in the broader total.



**TOTAL ANNUAL PAYROLL(\$000):
HEALTH CARE AND SOCIAL ASSISTANCE**

Year	County	State of Kansas	Non Metro Kansas	County Rank	Per 1000 or \$ Per Capita
2000	871	4,120,595	.	.	498.0
2001	549	4,445,027	.	.	323.9
2002	634	4,705,220	.	.	379.4
2003	.	4,939,323	.	.	.
2004	.	5,232,394	.	.	.
2005	.	5,487,089	.	.	.
2006	.	5,814,218	.	.	.
2007	1,098	6,186,471	.	.	741.4
2008	1,159	6,490,627	.	.	801.0
2009	1,174	6,749,962	.	.	799.2
2010	1,209	6,871,727	.	.	814.1
2011	1,346	7,129,655	.	.	882.0
2012	.	7,614,853	.	.	.
2013	.	7,541,515	.	.	.
2014	.	7,733,621	.	.	.
2015	.	7,969,650	.	.	.
2016	1,169	8,018,706	.	.	778.3
2017	1,179	8,384,998	.	.	778.2
2018	1,036	8,637,619	.	.	695.8
2019	1,163	8,854,414	.	.	766.1
2020	1,203	9,309,269	.	.	795.6

U.S. Census Bureau, County Business Patterns. Beginning with the 2017 data, any tabulation with fewer than 3 establishments were omitted from the release. Data for these establishments are included in the broader total.

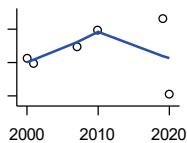
County: county value. Kansas: state value. County Rank: highest county value ranked #1. (\$000): thousands of dollars. Nonmetro Kansas: Kansas total less Metropolitan Areas as defined by the Office of Management and Budget (OMB; released 3/6/2020). Per 1000: For nonmoney amounts, Per 1000=(county value / county population for the same year as the data) x 1000. \$ Per capita=(county value / county population for the same year as the data). Value= . indicates missing or suppressed data or value not calculated.

Business

**TOTAL ANNUAL PAYROLL(\$000):
ARTS, ENTERTAINMENT, AND
RECREATION**

U.S. Census Bureau, County Business Patterns. Beginning with the 2017 data, any tabulation with fewer than 3 establishments were omitted from the release. Data for these establishments are included in the broader total.

Year	County	State of Kansas	Non Metro Kansas	County Rank	Per 1000 or \$ Per Capita
2000	.	195,784	.	.	.
2001	.	203,511	.	.	.
2002	.	206,204	.	.	.
2003	.	185,049	.	.	.
2004	.	190,742	.	.	.
2005	.	196,594	.	.	.
2006	.	201,049	.	.	.
2007	.	220,435	.	.	.
2008	.	236,986	.	.	.
2009	.	237,116	.	.	.
2010	.	233,285	.	.	.
2011	.	234,351	.	.	.
2012	.	254,169	.	.	.
2013	.	278,474	.	.	.
2014	.	289,103	.	.	.
2015	.	300,253	.	.	.



**TOTAL ANNUAL PAYROLL(\$000):
ACCOMMODATION AND FOOD
SERVICES**

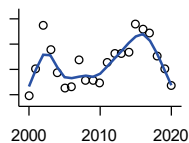
U.S. Census Bureau, County Business Patterns. Beginning with the 2017 data, any tabulation with fewer than 3 establishments were omitted from the release. Data for these establishments are included in the broader total.

Year	County	State of Kansas	Non Metro Kansas	County Rank	Per 1000 or \$ Per Capita
2000	414	926,831	.	.	236.7
2001	398	960,196	.	.	234.8
2002	.	930,510	.	.	.
2003	.	992,313	.	.	.
2004	.	1,046,901	.	.	.
2005	.	1,101,854	.	.	.
2006	.	1,185,280	.	.	.
2007	447	1,431,100	.	.	301.8
2008	.	1,271,594	.	.	.
2009	.	1,283,065	.	.	.
2010	499	1,296,556	.	.	336.0
2011	.	1,364,281	.	.	.
2012	.	1,388,337	.	.	.
2013	.	1,476,335	.	.	.
2014	.	1,572,021	.	.	.
2015	.	1,640,144	.	.	.
2019	532	1,958,603	.	.	350.5
2020	306	1,745,238	.	.	202.4

County: county value. Kansas: state value. County Rank: highest county value ranked #1. (\$000): thousands of dollars. Nonmetro Kansas: Kansas total less Metropolitan Areas as defined by the Office of Management and Budget (OMB; released 3/6/2020). Per 1000: For nonmoney amounts, Per 1000=(county value / county population for the same year as the data) x 1000. \$ Per capita=(county value / county population for the same year as the data). Value= . indicates missing or suppressed data or value not calculated.

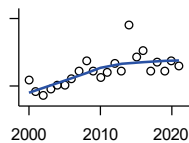
Business

**TOTAL ANNUAL PAYROLL(\$000):
OTHER SERVICES**



U.S. Census Bureau, County Business Patterns. Beginning with the 2017 data, any tabulation with fewer than 3 establishments were omitted from the release. Data for these establishments are included in the broader total.

Year	County	State of Kansas	Non Metro Kansas	County Rank	Per 1000 or \$ Per Capita
2000	194	965,540	.	.	110.9
2001	300	996,716	.	.	177.0
2002	474	1,007,464	.	.	283.7
2003	377	979,466	.	.	232.3
2004	288	970,383	.	.	184.4
2005	225	1,005,537	.	.	147.0
2006	231	1,055,932	.	.	151.3
2007	338	1,141,551	.	.	228.2
2008	259	1,184,016	.	.	179.0
2009	258	1,167,154	.	.	175.6
2010	249	1,170,201	.	.	167.7
2011	325	1,173,775	.	.	213.0
2012	361	1,217,210	.	.	237.0
2013	365	1,254,933	.	.	234.0
2014	370	1,305,563	.	.	246.5
2015	477	1,341,075	.	.	316.9
2016	459	1,351,375	.	.	305.6
2017	442	1,344,179	.	.	291.7
2018	354	1,382,801	.	.	237.7
2019	302	1,427,711	.	.	198.9
2020	237	1,420,859	.	.	156.7



**NOMINAL TAXABLE RETAIL SALES
(million\$)**

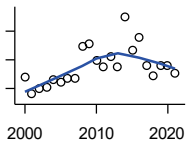
Kansas Department of Revenue

Year	County	State of Kansas	Non Metro Kansas	County Rank	Per 1000 or \$ Per Capita
2000	11.2	30,119.0	8,831.7	102	6.4
2001	8.7	30,202.2	8,700.3	104	5.1
2002	7.8	29,380.8	8,241.5	102	4.7
2003	9.3	30,694.0	8,710.6	104	5.7
2004	10.3	31,922.6	9,062.5	103	6.6
2005	10.2	32,924.2	9,386.6	104	6.7
2006	11.5	34,937.6	10,042.1	103	7.5
2007	13.4	36,180.1	10,553.2	103	9.1
2008	15.7	37,559.5	11,126.9	104	10.8
2009	13.2	35,211.8	10,351.5	103	9.0
2010	11.8	35,655.7	10,606.1	104	7.9
2011	13.1	37,257.0	11,153.5	104	8.6
2012	15.0	38,988.8	11,749.1	104	9.8
2013	13.4	40,009.0	11,993.8	105	8.6
2014	23.7	41,299.0	12,365.4	97	15.8
2015	16.4	41,635.8	11,747.6	103	10.9
2016	17.9	42,040.2	11,523.5	100	11.9
2017	13.3	41,940.1	11,449.9	103	8.8
2018	15.3	42,732.3	11,643.9	103	10.3
2019	13.2	43,732.5	12,062.7	104	8.7
2020	15.5	43,689.9	12,331.7	103	10.3
2021	14.5	48,532.8	13,413.0	104	9.6

County: county value. Kansas: state value. County Rank: highest county value ranked #1. (\$000): thousands of dollars. Nonmetro Kansas: Kansas total less Metropolitan Areas as defined by the Office of Management and Budget (OMB; released 3/6/2020). Per 1000: For nonmoney amounts, Per 1000=(county value / county population for the same year as the data) x 1000. \$ Per capita=(county value / county population for the same year as the data). Value= . indicates missing or suppressed data or value not calculated.

Business

RETAIL PULL FACTOR



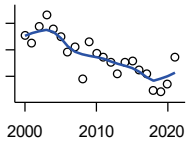
Kansas Direct Program, Kansas State University Cooperative Extension Service (1980-1999); Kansas Department of Revenue (2000-)

Year	County	State of Kansas	Non Metro Kansas	County Rank	Per 1000 or \$ Per Capita
2000	0.58	.	.	58	.
2001	0.46	.	.	78	.
2002	0.50	.	.	71	.
2003	0.51	.	.	71	.
2004	0.56	.	.	68	.
2005	0.54	.	.	73	.
2006	0.57	.	.	70	.
2007	0.57	.	.	73	.
2008	0.79	.	.	44	.
2009	0.81	.	.	44	.
2010	0.70	.	.	63	.
2011	0.65	.	.	72	.
2012	0.72	.	.	63	.
2013	0.65	.	.	75	.
2014	1.00	.	.	30	.
2015	0.77	.	.	52	.
2016	0.86	.	.	30	.
2017	0.66	.	.	66	.
2018	0.59	.	.	79	.
2019	0.66	.	.	69	.
2020	0.66	.	.	73	.
2021	0.61	.	.	78	.

County: county value. Kansas: state value. County Rank: highest county value ranked #1. (\$000): thousands of dollars. Nonmetro Kansas: Kansas total less Metropolitan Areas as defined by the Office of Management and Budget (OMB; released 3/6/2020). Per 1000: For nonmoney amounts, Per 1000=(county value / county population for the same year as the data) x 1000. \$ Per capita=(county value / county population for the same year as the data). Value= . indicates missing or suppressed data or value not calculated.

Employment

CIVILIAN LABOR FORCE (BLS-Place of Residence; 1990-)



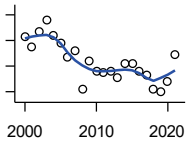
U.S. Department of Labor, Bureau of Labor Statistics (BLS)

Year	County	State of Kansas	Non Metro Kansas	County Rank	Per 1000 or \$ Per Capita
2000	928	1,402,606	482,229	104	530.6
2001	913	1,398,521	475,280	104	538.6
2002	943	1,419,335	482,428	104	564.3
2003	966	1,441,065	490,161	104	595.2
2004	940	1,458,910	494,509	104	601.8
2005	924	1,458,767	490,047	104	603.5
2006	896	1,467,553	498,594	104	586.8
2007	905	1,485,414	497,048	103	611.1
2008	846	1,493,365	504,522	104	584.7
2009	916	1,512,572	516,311	104	623.6
2010	894	1,500,463	492,594	104	602.0
2011	886	1,498,000	492,563	104	580.6
2012	876	1,490,808	489,349	105	575.2
2013	854	1,489,395	485,484	105	547.4
2014	877	1,494,203	481,813	104	584.3
2015	879	1,493,782	477,546	105	584.1
2016	863	1,491,961	468,258	104	574.6
2017	854	1,488,346	461,063	104	563.7
2018	824	1,488,027	456,866	104	553.4
2019	820	1,497,517	455,858	103	540.2
2020	836	1,493,706	452,935	103	552.9
2021	887	1,495,665	453,398	103	588.2

County: county value. Kansas: state value. County Rank: highest county value ranked #1. (\$000): thousands of dollars. Nonmetro Kansas: Kansas total less Metropolitan Areas as defined by the Office of Management and Budget (OMB; released 3/6/2020). Per 1000: For nonmoney amounts, Per 1000=(county value / county population for the same year as the data) x 1000. \$ Per capita=(county value / county population for the same year as the data). Value= . indicates missing or suppressed data or value not calculated.

Employment

EMPLOYED (BLS-Place of Residence; 1990-)

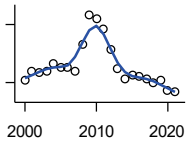


U.S. Department of Labor, Bureau of Labor Statistics (BLS)

Year	County	State of Kansas	Non Metro Kansas	County Rank	Per 1000 or \$ Per Capita
2000	907	1,349,841	464,962	104	518.6
2001	887	1,338,775	455,154	104	523.3
2002	918	1,347,163	461,241	104	549.4
2003	940	1,361,115	467,622	104	579.2
2004	910	1,378,355	470,330	104	582.6
2005	896	1,384,654	467,722	104	585.2
2006	868	1,402,950	479,174	104	568.4
2007	879	1,422,109	477,983	103	593.5
2008	806	1,425,022	484,056	104	557.0
2009	861	1,408,142	485,797	104	586.1
2010	841	1,396,172	461,635	104	566.3
2011	838	1,402,198	463,723	104	549.1
2012	839	1,405,638	463,376	105	550.9
2013	827	1,410,470	461,405	105	530.1
2014	855	1,426,892	461,797	104	569.6
2015	855	1,431,533	457,899	104	568.1
2016	840	1,431,920	449,356	104	559.3
2017	832	1,434,516	445,003	104	549.2
2018	804	1,439,329	442,716	104	540.0
2019	799	1,450,705	442,108	103	526.4
2020	820	1,408,965	433,229	103	542.3
2021	872	1,447,323	441,159	103	578.2

County: county value. Kansas: state value. County Rank: highest county value ranked #1. (\$000): thousands of dollars. Nonmetro Kansas: Kansas total less Metropolitan Areas as defined by the Office of Management and Budget (OMB; released 3/6/2020). Per 1000: For nonmoney amounts, Per 1000=(county value / county population for the same year as the data) x 1000. \$ Per capita=(county value / county population for the same year as the data). Value= . indicates missing or suppressed data or value not calculated.

Employment



UNEMPLOYED (BLS-Place of Residence; 1990-)

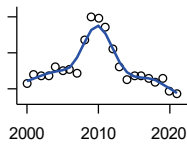
U.S. Department of Labor, Bureau of Labor Statistics (BLS)

Year	County	State of Kansas	Non Metro Kansas	County Rank	Per 1000 or \$ Per Capita
2000	21	52,765	17,267	105	12.0
2001	26	59,746	20,126	105	15.3
2002	25	72,172	21,187	104	15.0
2003	26	79,950	22,539	105	16.0
2004	30	80,555	24,179	105	19.2
2005	28	74,113	22,325	105	18.3
2006	28	64,603	19,420	104	18.3
2007	26	63,305	19,065	104	17.6
2008	40	68,343	20,466	99	27.6
2009	55	104,430	30,514	93	37.4
2010	53	104,291	30,959	96	35.7
2011	48	95,802	28,840	99	31.5
2012	37	85,170	25,973	104	24.3
2013	27	78,925	24,079	104	17.3
2014	22	67,311	20,016	104	14.7
2015	24	62,249	19,647	104	15.9
2016	23	60,041	18,902	104	15.3
2017	22	53,830	16,060	104	14.5
2018	20	48,698	14,150	104	13.4
2019	21	46,812	13,750	103	13.8
2020	16	84,741	19,706	104	10.6
2021	15	48,342	12,239	104	9.9

County: county value. Kansas: state value. County Rank: highest county value ranked #1. (\$000): thousands of dollars. Nonmetro Kansas: Kansas total less Metropolitan Areas as defined by the Office of Management and Budget (OMB; released 3/6/2020). Per 1000: For nonmoney amounts, Per 1000=(county value / county population for the same year as the data) x 1000. \$ Per capita=(county value / county population for the same year as the data). Value= . indicates missing or suppressed data or value not calculated.

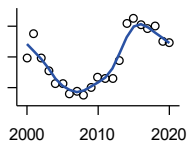
Employment

UNEMPLOYMENT RATE (BLS-Place of Residence; 1990-)



U.S. Department of Labor, Bureau of Labor Statistics (BLS)

Year	County	State of Kansas	Non Metro Kansas	County Rank	Per 1000 or \$ Per Capita
2000	2.3	3.8	3.6	103	.
2001	2.8	4.3	4.2	98	.
2002	2.7	5.1	4.4	104	.
2003	2.7	5.5	4.6	105	.
2004	3.2	5.5	4.9	103	.
2005	3.0	5.1	4.6	104	.
2006	3.1	4.4	3.9	87	.
2007	2.9	4.3	3.8	99	.
2008	4.7	4.6	4.1	26	.
2009	6.0	6.9	5.9	37	.
2010	5.9	7.0	6.3	47	.
2011	5.4	6.4	5.9	47	.
2012	4.2	5.7	5.3	66	.
2013	3.2	5.3	5.0	90	.
2014	2.5	4.5	4.2	100	.
2015	2.7	4.2	4.1	93	.
2016	2.7	4.0	4.0	94	.
2017	2.6	3.6	3.5	87	.
2018	2.4	3.3	3.1	85	.
2019	2.6	3.1	3.0	71	.
2020	1.9	5.7	4.4	103	.
2021	1.7	3.2	2.7	99	.



BEA EMPLOYMENT: TOTAL (Place of Work)

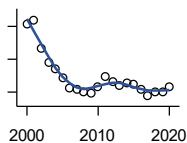
U.S. Bureau of Economic Analysis, Regional Economic Information System (REIS)

Year	County	State of Kansas	Non Metro Kansas	County Rank	Per 1000 or \$ Per Capita
2000	1,149	1,760,312	604,361	105	656.9
2001	1,188	1,767,601	592,672	105	700.9
2002	1,149	1,746,077	585,387	105	687.6
2003	1,128	1,733,694	577,860	105	695.0
2004	1,107	1,750,876	578,750	105	708.7
2005	1,106	1,765,650	577,562	104	722.4
2006	1,089	1,795,507	583,041	105	713.2
2007	1,094	1,844,355	591,924	104	738.7
2008	1,087	1,858,069	594,368	105	751.2
2009	1,100	1,813,184	580,972	104	748.8
2010	1,117	1,801,873	579,758	104	752.2
2011	1,114	1,819,044	583,725	105	730.0
2012	1,114	1,841,393	591,748	105	731.5
2013	1,144	1,869,054	597,236	105	733.3
2014	1,205	1,895,859	601,291	105	802.8
2015	1,213	1,910,954	598,589	105	806.0
2016	1,202	1,916,152	592,580	105	800.3
2017	1,196	1,914,179	584,337	105	789.4
2018	1,200	1,926,242	580,213	105	805.9
2019	1,175	1,925,204	574,496	105	774.0
2020	1,173	1,851,247	556,671	105	775.8

County: county value. Kansas: state value. County Rank: highest county value ranked #1. (\$000): thousands of dollars. Nonmetro Kansas: Kansas total less Metropolitan Areas as defined by the Office of Management and Budget (OMB; released 3/6/2020). Per 1000: For nonmoney amounts, Per 1000=(county value / county population for the same year as the data) x 1000. \$ Per capita=(county value / county population for the same year as the data). Value= . indicates missing or suppressed data or value not calculated.

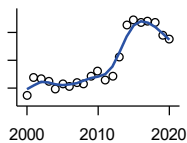
Employment

BEA EMPLOYMENT: FARM



U.S. Bureau of Economic Analysis, Regional Economic Information System (REIS)

Year	County	State of Kansas	Non Metro Kansas	County Rank	Per 1000 or \$ Per Capita
2000	363	77,477	59,088	101	207.5
2001	368	78,177	59,647	101	217.1
2002	333	70,532	53,893	100	199.3
2003	316	68,516	52,099	99	194.7
2004	308	67,586	51,246	100	197.2
2005	298	66,829	50,386	100	194.6
2006	285	64,910	48,728	100	186.6
2007	283	65,639	49,037	100	191.1
2008	280	63,820	47,682	100	193.5
2009	279	62,798	46,960	100	189.9
2010	287	63,882	47,984	101	193.3
2011	299	65,761	49,707	101	195.9
2012	293	63,753	48,167	100	192.4
2013	288	62,739	47,255	100	184.6
2014	291	64,308	48,722	101	193.9
2015	290	64,416	48,927	101	192.7
2016	283	63,840	48,539	101	188.4
2017	275	61,876	46,936	101	181.5
2018	281	63,233	48,069	101	188.7
2019	281	63,300	48,167	101	185.1
2020	286	64,281	49,038	101	189.2



BEA EMPLOYMENT: NON-FARM

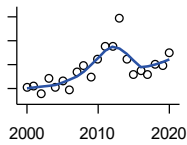
U.S. Bureau of Economic Analysis, Regional Economic Information System (REIS)

Year	County	State of Kansas	Non Metro Kansas	County Rank	Per 1000 or \$ Per Capita
2000	786	1,682,835	545,273	105	449.4
2001	820	1,689,424	533,025	105	483.8
2002	816	1,675,545	531,494	105	488.3
2003	812	1,665,178	525,761	105	500.3
2004	799	1,683,290	527,504	104	511.5
2005	808	1,698,821	527,176	104	527.8
2006	804	1,730,597	534,313	103	526.5
2007	811	1,778,716	542,887	103	547.6
2008	807	1,794,249	546,686	105	557.7
2009	821	1,750,386	534,012	104	558.9
2010	830	1,737,991	531,774	104	558.9
2011	815	1,753,283	534,018	105	534.1
2012	821	1,777,640	543,581	105	539.1
2013	856	1,806,315	549,981	105	548.7
2014	914	1,831,551	552,569	103	608.9
2015	923	1,846,538	549,662	103	613.3
2016	919	1,852,312	544,041	104	611.9
2017	921	1,852,303	537,401	104	607.9
2018	919	1,863,009	532,144	104	617.2
2019	894	1,861,904	526,329	103	588.9
2020	887	1,786,966	507,633	102	586.6

County: county value. Kansas: state value. County Rank: highest county value ranked #1. (\$000): thousands of dollars. Nonmetro Kansas: Kansas total less Metropolitan Areas as defined by the Office of Management and Budget (OMB; released 3/6/2020). Per 1000: For nonmoney amounts, Per 1000=(county value / county population for the same year as the data) x 1000. \$ Per capita=(county value / county population for the same year as the data). Value= . indicates missing or suppressed data or value not calculated.

Employment

AVERAGE WAGE PER JOB (\$)



U.S. Bureau of Economic Analysis,
Regional Economic Information System
(REIS)

Year	County	State of Kansas	Non Metro Kansas	County Rank	Per 1000 or \$ Per Capita
2000	20,956	31,854	24,396	65	.
2001	21,840	32,859	26,379	76	.
2002	15,228	33,707	26,331	105	.
2003	28,762	35,078	28,911	40	.
2004	20,883	35,932	29,747	95	.
2005	26,021	37,467	31,646	84	.
2006	18,449	40,038	31,993	103	.
2007	33,522	41,500	33,484	39	.
2008	39,597	44,197	36,256	23	.
2009	30,037	43,860	35,739	82	.
2010	44,797	45,370	38,631	25	.
2011	55,352	48,280	42,324	23	.
2012	54,860	50,549	42,015	20	.
2013	78,798	52,629	46,073	8	.
2014	44,566	51,959	43,562	40	.
2015	32,022	52,250	42,320	90	.
2016	35,212	51,664	41,964	76	.
2017	31,687	53,007	42,137	84	.
2018	39,995	54,790	44,514	62	.
2019	39,693	56,956	45,336	71	.
2020	50,130	60,597	49,183	33	.

BEA EMPLOYMENT: FORESTRY, FISHING, HUNTING, AND AG SUPPORT

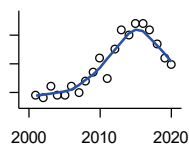
U.S. Bureau of Economic Analysis,
Regional Economic Information System
(REIS)

Year	County	State of Kansas	Non Metro Kansas	County Rank	Per 1000 or \$ Per Capita
2001	.	7,059	.	.	.
2002	.	8,045	.	.	.
2003	.	7,313	.	.	.
2004	.	7,623	.	.	.
2005	.	7,962	.	.	.
2006	.	7,748	.	.	.
2007	.	8,228	.	.	.
2008	.	8,646	.	.	.
2009	.	8,982	.	.	.
2010	.	9,251	.	.	.
2011	.	9,410	.	.	.
2012	.	9,691	.	.	.
2013	.	10,014	.	.	.
2014	.	10,708	.	.	.
2015	.	10,020	.	.	.
2016	.	10,383	.	.	.

County: county value. Kansas: state value. County Rank: highest county value ranked #1. (\$000): thousands of dollars. Nonmetro Kansas: Kansas total less Metropolitan Areas as defined by the Office of Management and Budget (OMB; released 3/6/2020). Per 1000: For nonmoney amounts, Per 1000=(county value / county population for the same year as the data) x 1000. \$ Per capita=(county value / county population for the same year as the data). Value= . indicates missing or suppressed data or value not calculated.

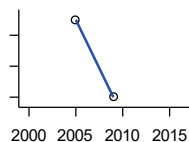
Employment

BEA EMPLOYMENT: MINING



U.S. Bureau of Economic Analysis,
Regional Economic Information System
(REIS)

Year	County	State of Kansas	Non Metro Kansas	County Rank	Per 1000 or \$ Per Capita
2001	9	19,592	.	60	.
2002	8	17,635	.	54	.
2003	12	19,869	.	53	.
2004	9	18,466	.	58	.
2005	9	19,489	.	59	.
2006	12	22,403	.	59	.
2007	10	24,043	.	59	.
2008	14	31,467	.	58	.
2009	17	29,941	.	53	.
2010	22	36,124	.	50	.
2011	15	31,658	.	50	.
2012	25	42,405	.	54	.
2013	32	46,585	.	58	.
2014	30	45,526	.	63	.
2015	34	46,460	.	56	.
2016	34	48,555	.	63	.
2017	32	40,710	.	59	.
2018	27	32,021	.	60	.
2019	22	29,101	.	64	.
2020	20	26,272	.	61	.



BEA EMPLOYMENT: UTILITIES

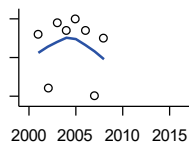
U.S. Bureau of Economic Analysis,
Regional Economic Information System
(REIS)

Year	County	State of Kansas	Non Metro Kansas	County Rank	Per 1000 or \$ Per Capita
2001	.	7,608	.	.	.
2002	.	7,087	.	.	.
2003	.	7,253	.	.	.
2004	.	7,356	.	.	.
2005	16	7,447	.	13	.
2006	.	7,478	.	.	.
2007	.	7,584	.	.	.
2008	.	7,855	.	.	.
2009	15	7,941	.	13	.
2010	.	8,028	.	.	.
2011	.	8,213	.	.	.
2012	.	8,155	.	.	.
2013	.	7,949	.	.	.
2014	.	7,985	.	.	.
2015	.	7,040	.	.	.
2016	.	7,133	.	.	.

County: county value. Kansas: state value. County Rank: highest county value ranked #1. (\$000): thousands of dollars. Nonmetro Kansas: Kansas total less Metropolitan Areas as defined by the Office of Management and Budget (OMB; released 3/6/2020). Per 1000: For nonmoney amounts, Per 1000=(county value / county population for the same year as the data) x 1000. \$ Per capita=(county value / county population for the same year as the data). Value= . indicates missing or suppressed data or value not calculated.

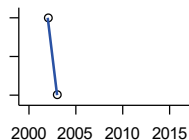
Employment

**BEA EMPLOYMENT:
CONSTRUCTION**



U.S. Bureau of Economic Analysis,
Regional Economic Information System
(REIS)

Year	County	State of Kansas	Non Metro Kansas	County Rank	Per 1000 or \$ Per Capita
2001	31	92,647	27,972	87	.
2002	17	90,370	.	87	.
2003	34	91,725	26,681	84	.
2004	32	93,271	.	83	.
2005	35	94,836	.	81	.
2006	32	97,449	.	81	.
2007	15	99,119	29,179	88	.
2008	30	97,741	.	87	.
2009	.	90,165	28,077	.	.
2010	.	84,708	26,402	.	.
2011	.	83,332	25,999	.	.
2012	.	85,966	.	.	.
2013	.	88,094	.	.	.
2014	.	91,143	.	.	.
2015	.	91,458	27,583	.	.
2016	.	93,539	27,151	.	.



**BEA EMPLOYMENT:
MANUFACTURING**

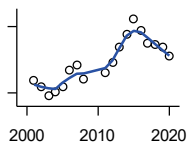
U.S. Bureau of Economic Analysis,
Regional Economic Information System
(REIS)

Year	County	State of Kansas	Non Metro Kansas	County Rank	Per 1000 or \$ Per Capita
2001	.	199,980	73,170	.	.
2002	13	188,905	70,691	87	.
2003	11	179,013	68,418	86	.
2004	.	181,738	69,669	.	.
2005	.	185,459	71,072	.	.
2006	.	188,047	71,704	.	.
2007	.	192,930	73,488	.	.
2008	.	193,116	72,235	.	.
2009	.	173,854	64,961	.	.
2010	.	166,000	62,884	.	.
2011	.	167,302	64,361	.	.
2012	.	169,308	65,944	.	.
2013	.	170,113	67,251	.	.
2014	.	169,307	68,299	.	.
2015	.	168,324	66,978	.	.
2016	.	167,723	65,796	.	.

County: county value. Kansas: state value. County Rank: highest county value ranked #1. (\$000): thousands of dollars. Nonmetro Kansas: Kansas total less Metropolitan Areas as defined by the Office of Management and Budget (OMB; released 3/6/2020). Per 1000: For nonmoney amounts, Per 1000=(county value / county population for the same year as the data) x 1000. \$ Per capita=(county value / county population for the same year as the data). Value= . indicates missing or suppressed data or value not calculated.

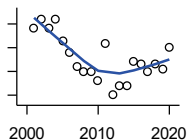
Employment

BEA EMPLOYMENT: WHOLESALE TRADE



U.S. Bureau of Economic Analysis,
Regional Economic Information System
(REIS)

Year	County	State of Kansas	Non Metro Kansas	County Rank	Per 1000 or \$ Per Capita
2001	71	65,698	.	78	.
2002	66	65,408	.	78	.
2003	57	63,504	.	78	.
2004	61	64,434	.	78	.
2005	65	64,587	.	73	.
2006	81	64,743	.	66	.
2007	85	65,993	.	61	.
2008	72	67,693	.	69	.
2009	.	65,954	.	.	.
2010	.	64,376	.	.	.
2011	78	64,712	.	74	.
2012	88	63,973	.	68	.
2013	102	64,999	.	60	.
2014	113	69,295	.	58	.
2015	127	68,444	.	54	.
2016	117	64,843	.	55	.
2017	105	65,014	.	57	.
2018	104	64,745	.	59	.
2019	101	63,324	.	61	.
2020	93	60,844	.	65	.



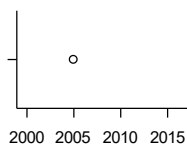
BEA EMPLOYMENT: RETAIL TRADE

U.S. Bureau of Economic Analysis,
Regional Economic Information System
(REIS)

Year	County	State of Kansas	Non Metro Kansas	County Rank	Per 1000 or \$ Per Capita
2001	98	198,069	.	103	.
2002	102	196,112	.	102	.
2003	98	194,545	64,173	103	.
2004	102	192,957	63,265	101	.
2005	93	191,656	62,506	102	.
2006	88	190,391	62,082	101	.
2007	82	190,643	61,716	102	.
2008	80	185,907	59,783	102	.
2009	80	181,262	58,714	102	.
2010	76	177,858	57,470	102	.
2011	92	180,548	57,734	99	.
2012	70	180,596	57,349	102	.
2013	74	183,245	57,556	102	.
2014	74	185,899	57,855	103	.
2015	84	188,421	58,516	101	.
2016	83	188,505	57,864	102	.
2017	80	186,633	56,715	103	.
2018	83	183,323	.	101	.
2019	81	177,240	53,427	101	.
2020	90	171,777	52,563	101	.

County: county value. Kansas: state value. County Rank: highest county value ranked #1. (\$000): thousands of dollars. Nonmetro Kansas: Kansas total less Metropolitan Areas as defined by the Office of Management and Budget (OMB; released 3/6/2020). Per 1000: For nonmoney amounts, Per 1000=(county value / county population for the same year as the data) x 1000. \$ Per capita=(county value / county population for the same year as the data). Value= . indicates missing or suppressed data or value not calculated.

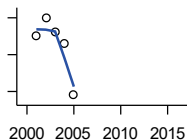
Employment



**BEA EMPLOYMENT:
TRANSPORTATION AND
WAREHOUSING**

U.S. Bureau of Economic Analysis,
Regional Economic Information System
(REIS)

Year	County	State of Kansas	Non Metro Kansas	County Rank	Per 1000 or \$ Per Capita
2001	.	56,302	.	.	.
2002	.	55,319	.	.	.
2003	.	55,509	.	.	.
2004	.	55,479	.	.	.
2005	34	56,287	.	46	.
2006	.	57,506	.	.	.
2007	.	59,277	.	.	.
2008	.	58,725	.	.	.
2009	.	56,238	.	.	.
2010	.	55,179	.	.	.
2011	.	57,449	.	.	.
2012	.	59,756	.	.	.
2013	.	59,780	.	.	.
2014	.	60,565	.	.	.
2015	.	63,256	.	.	.
2016	.	65,705	.	.	.



BEA EMPLOYMENT: INFORMATION

U.S. Bureau of Economic Analysis,
Regional Economic Information System
(REIS)

Year	County	State of Kansas	Non Metro Kansas	County Rank	Per 1000 or \$ Per Capita
2001	25	54,895	.	62	.
2002	30	50,728	.	54	.
2003	26	48,328	6,860	61	.
2004	23	45,617	.	63	.
2005	9	43,840	.	70	.
2006	.	43,925	.	.	.
2007	.	45,115	.	.	.
2008	.	42,958	.	.	.
2009	.	38,677	.	.	.
2010	.	33,432	.	.	.
2011	.	32,160	.	.	.
2012	.	31,829	.	.	.
2013	.	31,737	.	.	.
2014	.	32,316	.	.	.
2015	.	25,282	.	.	.
2016	.	24,998	.	.	.

County: county value. Kansas: state value. County Rank: highest county value ranked #1. (\$000): thousands of dollars. Nonmetro Kansas: Kansas total less Metropolitan Areas as defined by the Office of Management and Budget (OMB; released 3/6/2020). Per 1000: For nonmoney amounts, Per 1000=(county value / county population for the same year as the data) x 1000. \$ Per capita=(county value / county population for the same year as the data). Value= . indicates missing or suppressed data or value not calculated.

Employment

BEA EMPLOYMENT: FINANCE AND INSURANCE

U.S. Bureau of Economic Analysis,
Regional Economic Information System
(REIS)

Year	County	State of Kansas	Non Metro Kansas	County Rank	Per 1000 or \$ Per Capita
2001	.	76,118	.	.	.
2002	.	78,206	.	.	.
2003	.	78,441	.	.	.
2004	.	78,350	.	.	.
2005	.	78,952	.	.	.
2006	.	80,900	.	.	.
2007	.	86,094	.	.	.
2008	.	89,590	.	.	.
2009	.	93,573	.	.	.
2010	.	92,428	.	.	.
2011	.	99,495	.	.	.
2012	.	98,640	.	.	.
2013	.	99,998	.	.	.
2014	.	98,209	.	.	.
2015	.	100,534	.	.	.
2016	.	102,699	.	.	.

BEA EMPLOYMENT: REAL ESTATE, RENTAL, AND LEASING

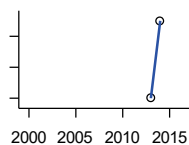
U.S. Bureau of Economic Analysis,
Regional Economic Information System
(REIS)

Year	County	State of Kansas	Non Metro Kansas	County Rank	Per 1000 or \$ Per Capita
2001	.	45,237	.	.	.
2002	.	44,970	.	.	.
2003	.	47,095	.	.	.
2004	.	50,181	.	.	.
2005	.	53,335	.	.	.
2006	.	55,342	.	.	.
2007	.	57,694	.	.	.
2008	.	57,933	.	.	.
2009	.	57,132	.	.	.
2010	.	59,578	.	.	.
2011	.	61,821	.	.	.
2012	.	60,432	.	.	.
2013	.	62,134	.	.	.
2014	.	64,705	.	.	.
2015	.	66,604	.	.	.
2016	.	68,395	.	.	.

County: county value. Kansas: state value. County Rank: highest county value ranked #1. (\$000): thousands of dollars. Nonmetro Kansas: Kansas total less Metropolitan Areas as defined by the Office of Management and Budget (OMB; released 3/6/2020). Per 1000: For nonmoney amounts, Per 1000=(county value / county population for the same year as the data) x 1000. \$ Per capita=(county value / county population for the same year as the data). Value= . indicates missing or suppressed data or value not calculated.

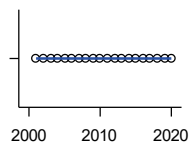
Employment

BEA EMPLOYMENT: PROFESSIONAL AND TECHNICAL SERVICES



U.S. Bureau of Economic Analysis, Regional Economic Information System (REIS)

Year	County	State of Kansas	Non Metro Kansas	County Rank	Per 1000 or \$ Per Capita
2001	.	81,396	.	.	.
2002	.	80,684	.	.	.
2003	.	80,311	.	.	.
2004	.	85,550	.	.	.
2005	.	85,003	.	.	.
2006	.	87,381	.	.	.
2007	.	92,717	.	.	.
2008	.	95,362	.	.	.
2009	.	93,232	.	.	.
2010	.	93,037	.	.	.
2011	.	93,237	.	.	.
2012	.	95,360	.	.	.
2013	28	100,795	.	80	.
2014	29	102,210	.	79	.
2015	.	105,625	.	.	.
2016	.	108,059	.	.	.



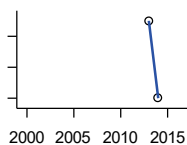
BEA EMPLOYMENT: MANAGEMENT OF COMPANIES AND ENTERPRISES

U.S. Bureau of Economic Analysis, Regional Economic Information System (REIS)

Year	County	State of Kansas	Non Metro Kansas	County Rank	Per 1000 or \$ Per Capita
2001	0	13,832	.	70	.
2002	0	12,576	.	69	.
2003	0	11,135	.	67	.
2004	0	10,614	.	67	.
2005	0	11,811	.	66	.
2006	0	13,061	.	66	.
2007	0	13,398	.	69	.
2008	0	15,234	.	72	.
2009	0	14,849	.	75	.
2010	0	16,579	.	75	.
2011	0	15,343	.	75	.
2012	0	15,075	.	82	.
2013	0	16,667	.	81	.
2014	0	20,441	.	79	.
2015	0	29,604	.	78	.
2016	0	27,824	.	77	.
2017	0	27,767	.	77	.
2018	0	28,862	.	75	.
2019	0	30,512	.	74	.
2020	0	25,648	.	74	.

County: county value. Kansas: state value. County Rank: highest county value ranked #1. (\$000): thousands of dollars. Nonmetro Kansas: Kansas total less Metropolitan Areas as defined by the Office of Management and Budget (OMB; released 3/6/2020). Per 1000: For nonmoney amounts, Per 1000=(county value / county population for the same year as the data) x 1000. \$ Per capita=(county value / county population for the same year as the data). Value= . indicates missing or suppressed data or value not calculated.

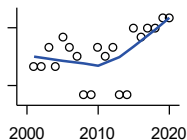
Employment



**BEA EMPLOYMENT:
ADMINISTRATIVE AND WASTE
SERVICES**

U.S. Bureau of Economic Analysis,
Regional Economic Information System
(REIS)

Year	County	State of Kansas	Non Metro Kansas	County Rank	Per 1000 or \$ Per Capita
2001	.	81,573	.	.	.
2002	.	82,992	.	.	.
2003	.	81,298	.	.	.
2004	.	85,721	.	.	.
2005	.	89,933	.	.	.
2006	.	93,688	.	.	.
2007	.	98,865	.	.	.
2008	.	97,440	.	.	.
2009	.	92,455	.	.	.
2010	.	93,675	.	.	.
2011	.	97,969	.	.	.
2012	.	100,490	.	.	.
2013	29	104,680	.	64	.
2014	28	107,218	18,836	61	.
2015	.	103,436	18,767	.	.
2016	.	103,233	18,428	.	.



**BEA EMPLOYMENT: EDUCATIONAL
SERVICES**

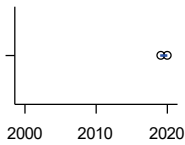
U.S. Bureau of Economic Analysis,
Regional Economic Information System
(REIS)

Year	County	State of Kansas	Non Metro Kansas	County Rank	Per 1000 or \$ Per Capita
2001	4	21,169	.	74	.
2002	4	22,173	.	75	.
2003	6	22,651	.	75	.
2004	4	21,601	.	80	.
2005	7	22,177	.	68	.
2006	6	22,438	.	74	.
2007	5	23,647	.	70	.
2008	1	24,653	.	71	.
2009	1	25,120	.	68	.
2010	6	26,071	.	61	.
2011	5	26,080	.	66	.
2012	6	26,625	.	56	.
2013	1	27,508	.	68	.
2014	1	28,708	.	67	.
2015	8	28,794	.	65	.
2016	7	27,996	.	61	.
2017	8	28,459	.	53	.
2018	8	28,560	.	56	.
2019	9	29,586	.	58	.
2020	9	27,508	.	58	.

County: county value. Kansas: state value. County Rank: highest county value ranked #1. (\$000): thousands of dollars. Nonmetro Kansas: Kansas total less Metropolitan Areas as defined by the Office of Management and Budget (OMB; released 3/6/2020). Per 1000: For nonmoney amounts, Per 1000=(county value / county population for the same year as the data) x 1000. \$ Per capita=(county value / county population for the same year as the data). Value= . indicates missing or suppressed data or value not calculated.

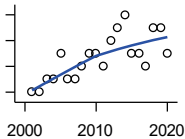
Employment

BEA EMPLOYMENT: HEALTH CARE AND SOCIAL ASSISTANCE



U.S. Bureau of Economic Analysis, Regional Economic Information System (REIS)

Year	County	State of Kansas	Non Metro Kansas	County Rank	Per 1000 or \$ Per Capita
2001	.	165,415	.	.	.
2002	.	168,198	.	.	.
2003	.	169,654	.	.	.
2004	.	172,796	.	.	.
2005	.	173,949	.	.	.
2006	.	176,919	.	.	.
2007	.	182,160	.	.	.
2008	.	186,051	.	.	.
2009	.	188,499	.	.	.
2010	.	188,383	.	.	.
2011	.	190,736	.	.	.
2012	.	192,991	.	.	.
2013	.	193,687	.	.	.
2014	.	194,632	.	.	.
2015	.	199,724	.	.	.
2016	.	201,830	.	.	.
2019	18	206,646	.	58	.
2020	18	204,942	.	58	.



BEA EMPLOYMENT: ARTS, ENTERTAINMENT, AND RECREATION

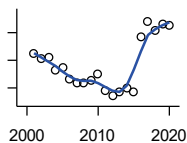
U.S. Bureau of Economic Analysis, Regional Economic Information System (REIS)

Year	County	State of Kansas	Non Metro Kansas	County Rank	Per 1000 or \$ Per Capita
2001	8	25,012	.	67	.
2002	8	25,668	.	67	.
2003	9	24,116	.	66	.
2004	9	25,355	.	68	.
2005	11	26,067	.	65	.
2006	9	26,505	.	69	.
2007	9	27,489	.	64	.
2008	10	27,501	.	68	.
2009	11	27,203	.	69	.
2010	11	27,479	.	63	.
2011	10	28,487	.	64	.
2012	12	30,729	.	64	.
2013	13	31,068	.	56	.
2014	14	32,154	.	56	.
2015	11	31,169	.	60	.
2016	11	32,373	.	60	.
2017	10	33,213	.	59	.
2018	13	33,837	.	50	.
2019	13	33,082	.	54	.
2020	11	26,644	.	50	.

County: county value. Kansas: state value. County Rank: highest county value ranked #1. (\$000): thousands of dollars. Nonmetro Kansas: Kansas total less Metropolitan Areas as defined by the Office of Management and Budget (OMB; released 3/6/2020). Per 1000: For nonmoney amounts, Per 1000=(county value / county population for the same year as the data) x 1000. \$ Per capita=(county value / county population for the same year as the data). Value= . indicates missing or suppressed data or value not calculated.

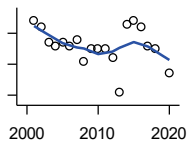
Employment

BEA EMPLOYMENT: GOVERNMENT AND GOVERNMENT ENTERPRISES



U.S. Bureau of Economic Analysis, Regional Economic Information System (REIS)

Year	County	State of Kansas	Non Metro Kansas	County Rank	Per 1000 or \$ Per Capita
2001	205	282,293	102,993	105	.
2002	201	281,427	103,581	105	.
2003	202	282,459	103,389	104	.
2004	193	283,877	103,946	105	.
2005	195	282,798	103,194	105	.
2006	186	288,372	104,103	105	.
2007	184	294,413	104,598	105	.
2008	184	298,580	104,718	105	.
2009	185	300,422	104,081	105	.
2010	190	303,875	103,382	105	.
2011	178	299,952	101,535	105	.
2012	174	298,068	101,180	105	.
2013	177	297,689	101,232	105	.
2014	180	296,956	100,634	105	.
2015	177	295,799	99,719	105	.
2016	217	291,536	98,520	104	.
2017	228	295,748	99,542	104	.
2018	222	298,105	99,499	104	.
2019	226	302,017	100,227	104	.
2020	225	292,583	96,477	104	.



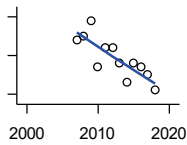
BEA EMPLOYMENT: ACCOMMODATION AND FOOD SERVICES

U.S. Bureau of Economic Analysis, Regional Economic Information System (REIS)

Year	County	State of Kansas	Non Metro Kansas	County Rank	Per 1000 or \$ Per Capita
2001	59	103,353	.	63	.
2002	57	103,692	.	61	.
2003	52	105,138	.	61	.
2004	51	106,694	.	64	.
2005	52	107,303	.	65	.
2006	51	109,888	.	66	.
2007	53	110,863	.	64	.
2008	46	111,092	.	65	.
2009	50	109,353	.	68	.
2010	50	108,628	.	62	.
2011	50	110,514	.	62	.
2012	47	112,574	.	62	.
2013	36	114,102	.	61	.
2014	58	115,768	.	59	.
2015	59	118,503	.	55	.
2016	57	119,764	.	54	.
2017	51	121,181	.	52	.
2018	50	121,900	.	55	.
2020	42	106,561	.	59	.

County: county value. Kansas: state value. County Rank: highest county value ranked #1. (\$000): thousands of dollars. Nonmetro Kansas: Kansas total less Metropolitan Areas as defined by the Office of Management and Budget (OMB; released 3/6/2020). Per 1000: For nonmoney amounts, Per 1000=(county value / county population for the same year as the data) x 1000. \$ Per capita=(county value / county population for the same year as the data). Value= . indicates missing or suppressed data or value not calculated.

Employment

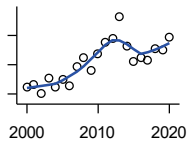


BEA EMPLOYMENT: OTHER SERVICES, EXCEPT PUBLIC ADMINISTRATION

U.S. Bureau of Economic Analysis, Regional Economic Information System (REIS)

Year	County	State of Kansas	Non Metro Kansas	County Rank	Per 1000 or \$ Per Capita
2001	.	92,176	.	.	.
2002	.	95,350	.	.	.
2003	.	95,821	32,629	.	.
2004	.	95,610	.	.	.
2005	.	95,930	32,555	.	.
2006	.	96,413	.	.	.
2007	69	98,444	.	88	.
2008	70	96,705	.	83	.
2009	74	95,534	.	82	.
2010	62	93,302	.	82	.
2011	67	94,865	.	82	.
2012	67	94,977	.	79	.
2013	63	95,471	.	82	.
2014	58	97,806	.	83	.
2015	63	98,041	.	77	.
2016	62	97,219	.	77	.
2017	60	96,568	.	78	.
2018	56	98,645	.	82	.

Income



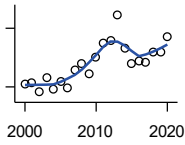
BEA PER CAPITA PERSONAL INCOME (\$)

U.S. Bureau of Economic Analysis, Regional Economic Information System (REIS)

Year	County	State of Kansas	Non Metro Kansas	County Rank	Per 1000 or \$ Per Capita
2000	24,667	28,253	23,116	42	.
2001	26,037	29,112	24,576	39	.
2002	20,685	29,248	24,314	102	.
2003	30,724	30,074	26,017	13	.
2004	24,398	30,843	26,583	82	.
2005	29,617	32,545	28,356	53	.
2006	25,185	35,690	29,782	101	.
2007	38,593	38,057	32,034	10	.
2008	44,581	41,257	35,211	11	.
2009	36,097	39,431	33,876	46	.
2010	47,661	39,960	35,795	12	.
2011	55,713	43,015	39,041	12	.
2012	57,644	45,294	39,660	10	.
2013	72,894	46,174	41,747	9	.
2014	52,898	47,013	41,042	18	.
2015	42,620	47,332	40,638	48	.
2016	44,742	47,326	40,797	35	.
2017	42,925	48,756	41,314	43	.
2018	51,176	50,811	43,283	22	.
2019	50,175	52,820	44,491	30	.
2020	59,159	55,677	48,415	19	.

County: county value. Kansas: state value. County Rank: highest county value ranked #1. (\$000): thousands of dollars. Nonmetro Kansas: Kansas total less Metropolitan Areas as defined by the Office of Management and Budget (OMB; released 3/6/2020). Per 1000: For nonmoney amounts, Per 1000=(county value / county population for the same year as the data) x 1000. \$ Per capita=(county value / county population for the same year as the data). Value= . indicates missing or suppressed data or value not calculated.

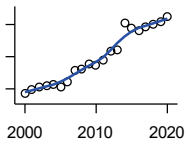
Income



**SOURCES OF PERSONAL INCOME:
TOTAL PERSONAL INCOME (\$000)**

U.S. Bureau of Economic Analysis,
Regional Economic Information System
(REIS)

Year	County	State of Kansas	Non Metro Kansas	County Rank	Per 1000 or \$ Per Capita
2000	42,748	76,105,125	22,273,838	105	24,441.4
2001	44,133	78,664,651	23,411,174	105	26,037.2
2002	34,565	79,365,190	23,000,314	104	20,685.2
2003	49,865	81,890,340	24,494,191	105	30,724.0
2004	38,110	84,335,940	24,924,467	104	24,398.2
2005	45,344	89,346,228	26,452,291	105	29,617.2
2006	38,457	98,610,188	27,661,596	104	25,184.7
2007	57,156	105,943,199	29,715,946	104	38,592.8
2008	64,508	115,852,478	32,614,565	104	44,580.5
2009	53,027	111,697,350	31,394,702	105	36,097.3
2010	70,538	114,239,828	33,291,419	105	47,500.3
2011	84,963	123,558,772	36,221,488	104	55,676.9
2012	87,792	130,948,127	36,696,759	102	57,644.1
2013	113,714	133,979,908	38,513,959	99	72,893.6
2014	79,400	136,878,718	37,680,598	103	52,898.1
2015	64,143	138,336,768	37,081,851	104	42,619.9
2016	67,068	138,533,890	36,930,885	105	44,652.5
2017	64,945	142,729,689	37,104,963	105	42,868.0
2018	75,945	148,955,739	38,589,364	104	51,004.0
2019	76,166	154,961,001	39,424,148	104	50,175.2
2020	90,868	163,462,179	42,618,591	104	60,097.9



**SOURCES OF PERSONAL INCOME:
WAGES AND SALARIES (\$000)**

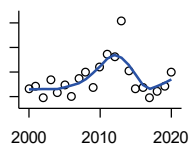
U.S. Bureau of Economic Analysis,
Regional Economic Information System
(REIS)

Year	County	State of Kansas	Non Metro Kansas	County Rank	Per 1000 or \$ Per Capita
2000	11,718	41,766,878	10,254,250	105	6,699.8
2001	12,334	43,269,734	10,518,206	105	7,276.7
2002	12,867	43,875,159	10,696,876	105	7,700.2
2003	13,071	44,488,560	10,894,971	105	8,053.6
2004	13,229	46,702,068	11,333,617	105	8,469.3
2005	12,825	48,537,956	11,614,130	105	8,376.9
2006	13,640	52,083,584	12,299,340	105	8,932.5
2007	15,443	55,442,368	13,093,908	105	10,427.4
2008	15,634	57,623,385	13,647,143	105	10,804.4
2009	16,431	55,605,578	13,199,674	104	11,185.2
2010	16,137	56,089,711	13,345,291	105	10,866.7
2011	17,025	58,104,706	13,856,458	105	11,156.6
2012	18,335	60,616,457	14,473,599	104	12,038.7
2013	18,565	61,872,023	14,781,792	104	11,900.6
2014	22,698	64,457,652	15,385,500	101	15,121.9
2015	21,988	66,729,598	15,454,485	101	14,610.0
2016	21,592	67,253,399	15,422,058	102	14,375.5
2017	22,063	68,830,861	15,731,853	102	14,563.0
2018	22,440	71,580,544	16,311,725	102	15,070.5
2019	23,008	74,404,771	16,882,299	102	15,156.8
2020	23,743	75,798,310	17,251,300	103	15,703.0

County: county value. Kansas: state value. County Rank: highest county value ranked #1. (\$000): thousands of dollars. Nonmetro Kansas: Kansas total less Metropolitan Areas as defined by the Office of Management and Budget (OMB; released 3/6/2020). Per 1000: For nonmoney amounts, Per 1000=(county value / county population for the same year as the data) x 1000. \$ Per capita=(county value / county population for the same year as the data). Value= . indicates missing or suppressed data or value not calculated.

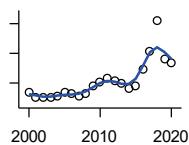
Income

**SOURCES OF PERSONAL INCOME:
PROPRIETORS-FARM (\$000)**



U.S. Bureau of Economic Analysis,
Regional Economic Information System
(REIS)

Year	County	State of Kansas	Non Metro Kansas	County Rank	Per 1000 or \$ Per Capita
2000	6,341	668,539	673,707	45	3,625.5
2001	8,033	779,473	769,336	43	4,739.2
2002	-1,307	145,064	187,033	76	-782.2
2003	13,525	1,281,076	1,195,298	46	8,333.3
2004	3,561	1,149,425	938,524	80	2,279.8
2005	9,143	1,609,604	1,469,139	66	5,971.9
2006	-222	766,047	663,735	82	-145.4
2007	14,592	1,131,607	1,040,350	34	9,852.8
2008	20,015	1,582,092	1,404,900	37	13,832.1
2009	7,832	1,585,995	1,390,349	76	5,331.5
2010	24,391	2,149,482	2,029,067	33	16,424.9
2011	34,105	3,188,519	2,989,880	40	22,349.3
2012	32,654	2,519,555	2,296,875	29	21,440.6
2013	61,674	4,499,190	4,158,419	23	39,534.6
2014	21,093	2,231,181	2,157,992	35	14,052.6
2015	6,770	1,300,733	1,294,370	46	4,498.3
2016	7,631	1,577,060	1,564,511	44	5,080.6
2017	-425	838,480	838,290	65	-280.5
2018	4,088	1,050,662	971,690	67	2,745.5
2019	8,678	998,038	878,247	50	5,716.7
2020	20,173	2,151,349	1,887,881	51	13,341.9



**SOURCES OF PERSONAL INCOME:
PROPRIETORS-NONFARM (\$000)**

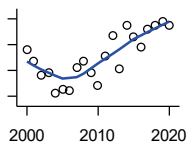
U.S. Bureau of Economic Analysis,
Regional Economic Information System
(REIS)

Year	County	State of Kansas	Non Metro Kansas	County Rank	Per 1000 or \$ Per Capita
2000	3,354	4,580,476	1,493,470	102	1,917.7
2001	2,609	4,510,530	1,855,621	104	1,539.2
2002	2,680	5,036,100	1,966,784	104	1,603.8
2003	2,496	4,719,377	1,916,735	105	1,537.9
2004	2,792	4,003,922	2,073,898	104	1,787.5
2005	3,337	4,455,294	2,200,971	104	2,179.6
2006	3,202	7,343,524	2,694,895	104	2,096.9
2007	2,707	7,280,197	2,436,574	104	1,827.8
2008	3,155	9,255,953	2,971,923	104	2,180.4
2009	4,566	9,323,551	2,858,848	104	3,108.2
2010	5,171	9,658,261	3,498,040	104	3,482.2
2011	5,853	12,196,566	4,186,007	104	3,835.5
2012	5,465	15,773,140	4,446,004	104	3,588.3
2013	4,860	16,441,660	4,492,127	104	3,115.4
2014	4,066	15,954,254	4,455,081	105	2,708.9
2015	4,433	15,536,116	4,386,172	105	2,945.5
2016	7,380	14,075,310	3,783,829	99	4,913.4
2017	10,388	15,371,957	3,908,254	96	6,856.8
2018	15,531	15,716,877	4,238,775	85	10,430.5
2019	9,006	16,705,488	3,921,051	97	5,932.8
2020	8,434	16,718,952	3,823,329	97	5,578.0

County: county value. Kansas: state value. County Rank: highest county value ranked #1. (\$000): thousands of dollars. Nonmetro Kansas: Kansas total less Metropolitan Areas as defined by the Office of Management and Budget (OMB; released 3/6/2020). Per 1000: For nonmoney amounts, Per 1000=(county value / county population for the same year as the data) x 1000. \$ Per capita=(county value / county population for the same year as the data). Value= . indicates missing or suppressed data or value not calculated.

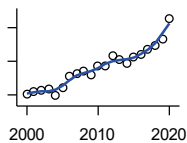
Income

**SOURCES OF PERSONAL INCOME:
DIVIDENDS,INTEREST,RENT(\$000)**



U.S. Bureau of Economic Analysis,
Regional Economic Information System
(REIS)

Year	County	State of Kansas	Non Metro Kansas	County Rank	Per 1000 or \$ Per Capita
2000	11,647	15,916,201	4,736,921	104	6,659.2
2001	10,683	15,770,830	4,699,417	104	6,302.7
2002	9,647	15,111,563	4,316,887	104	5,773.2
2003	9,783	15,370,764	4,360,311	104	6,027.7
2004	8,193	15,820,469	4,251,925	104	5,245.2
2005	8,529	17,147,069	4,485,387	104	5,570.9
2006	8,397	20,117,848	4,945,184	104	5,499.0
2007	10,180	22,269,186	5,526,219	104	6,873.7
2008	10,745	24,972,485	6,180,979	105	7,425.7
2009	9,835	21,453,879	5,308,474	104	6,695.0
2010	8,856	20,861,351	5,414,285	105	5,963.6
2011	11,101	23,387,567	5,781,075	104	7,274.6
2012	12,731	25,689,368	6,389,505	104	8,359.2
2013	10,128	24,832,212	5,984,811	104	6,492.3
2014	13,534	27,412,684	6,403,356	104	9,016.7
2015	12,598	27,244,414	6,423,685	104	8,370.8
2016	11,791	27,293,441	6,389,161	104	7,850.2
2017	13,180	28,385,472	6,700,156	104	8,699.7
2018	13,542	29,953,419	6,772,504	104	9,094.7
2019	13,818	30,820,276	6,957,987	104	9,102.8
2020	13,449	30,283,520	6,844,745	104	8,894.8



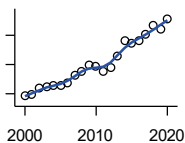
**SOURCES OF PERSONAL INCOME:
TRANSFER PAYMENTS (\$000)**

U.S. Bureau of Economic Analysis,
Regional Economic Information System
(REIS)

Year	County	State of Kansas	Non Metro Kansas	County Rank	Per 1000 or \$ Per Capita
2000	7,519	9,650,835	4,036,781	103	4,299.0
2001	8,067	10,549,124	4,355,457	104	4,759.3
2002	8,169	11,208,997	4,553,978	104	4,888.7
2003	8,341	11,709,049	4,702,911	104	5,139.2
2004	7,352	12,040,452	4,802,536	104	4,706.8
2005	8,483	12,696,735	5,059,314	104	5,540.8
2006	10,324	13,642,787	5,455,207	104	6,761.0
2007	10,639	14,686,821	5,775,024	104	7,183.7
2008	10,992	16,552,460	6,322,722	104	7,596.4
2009	10,388	18,025,603	6,790,962	104	7,071.5
2010	11,745	19,189,749	7,089,258	104	7,909.1
2011	11,763	19,625,770	7,255,825	104	7,708.4
2012	13,328	19,354,458	7,148,177	102	8,751.1
2013	12,736	19,639,358	7,185,636	104	8,164.1
2014	12,138	20,380,970	7,399,809	104	8,086.6
2015	13,173	21,116,856	7,623,577	104	8,752.8
2016	13,462	21,884,629	7,886,000	104	8,962.7
2017	14,227	22,559,744	8,062,517	104	9,390.8
2018	14,840	23,628,033	8,393,617	104	9,966.4
2019	15,730	25,050,174	8,845,371	104	10,362.3
2020	18,859	32,319,421	11,074,190	104	12,472.9

County: county value. Kansas: state value. County Rank: highest county value ranked #1. (\$000): thousands of dollars. Nonmetro Kansas: Kansas total less Metropolitan Areas as defined by the Office of Management and Budget (OMB; released 3/6/2020). Per 1000: For nonmoney amounts, Per 1000=(county value / county population for the same year as the data) x 1000. \$ Per capita=(county value / county population for the same year as the data). Value= . indicates missing or suppressed data or value not calculated.

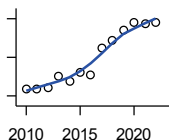
Income



**SOURCES OF PERSONAL INCOME:
LESS SOCIAL INSURANCE (\$000)**

U.S. Bureau of Economic Analysis,
Regional Economic Information System
(REIS)

Year	County	State of Kansas	Non Metro Kansas	County Rank	Per 1000 or \$ Per Capita
2000	1,924	6,655,813	1,663,044	105	1,100.1
2001	1,956	6,869,934	1,740,915	105	1,154.0
2002	2,190	7,008,361	1,778,636	105	1,310.6
2003	2,237	7,172,781	1,821,858	105	1,378.3
2004	2,281	7,556,560	1,904,014	105	1,460.3
2005	2,299	7,911,241	1,986,907	105	1,501.6
2006	2,364	8,406,937	2,090,313	105	1,548.1
2007	2,619	8,806,941	2,180,587	105	1,768.4
2008	2,785	9,207,010	2,299,399	105	1,924.7
2009	2,973	9,002,859	2,248,703	104	2,023.8
2010	2,960	9,235,760	2,321,191	105	1,993.3
2011	2,771	8,515,986	2,139,991	105	1,815.9
2012	2,896	8,816,128	2,195,919	105	1,901.5
2013	3,298	10,225,399	2,540,439	105	2,114.1
2014	3,809	10,609,601	2,635,009	102	2,537.6
2015	3,742	11,028,204	2,663,038	104	2,486.4
2016	3,794	10,915,915	2,604,579	104	2,526.0
2017	4,024	11,224,218	2,669,954	103	2,656.1
2018	4,323	11,749,229	2,797,106	102	2,903.3
2019	4,208	12,245,451	2,889,336	103	2,772.1
2020	4,563	12,715,152	3,027,656	103	3,017.9



HUD MEDIAN FAMILY INCOME

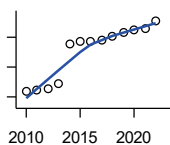
U.S. Department of Housing and Urban
Development (HUD)

Year	County	State of Kansas	Non Metro Kansas	County Rank	Per 1000 or \$ Per Capita
2010	53,300	63,100	.	45	.
2011	53,700	64,300	.	58	.
2012	54,400	65,200	.	58	.
2013	60,500	64,800	.	36	.
2014	57,400	64,400	.	54	.
2015	62,300	66,300	.	35	.
2016	60,600	66,700	.	38	.
2017	74,500	68,500	.	6	.
2018	79,000	73,100	.	7	.
2019	84,000	75,200	.	1	.
2020	87,800	76,500	.	2	.
2021	87,400	77,400	.	1	.
2022	88,000	87,800	.	9	.

County: county value. Kansas: state value. County Rank: highest county value ranked #1. (\$000): thousands of dollars. Nonmetro Kansas: Kansas total less Metropolitan Areas as defined by the Office of Management and Budget (OMB; released 3/6/2020). Per 1000: For nonmoney amounts, Per 1000=(county value / county population for the same year as the data) x 1000. \$ Per capita=(county value / county population for the same year as the data). Value= . indicates missing or suppressed data or value not calculated.

Income

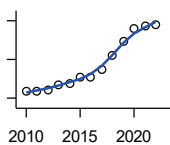
HUD 30% LOW-TO-MEDIUM INCOME (LMI) LIMIT - 4 PERSONS



U.S. Department of Housing and Urban Development (HUD)

Year	County	State of Kansas	Non Metro Kansas	County Rank	Per 1000 or \$ Per Capita
2010	16,000	.	.	45	.
2011	16,100	.	.	105	.
2012	16,300	.	.	105	.
2013	17,150	.	.	54	.
2014	23,850	.	.	105	.
2015	24,250	.	.	105	.
2016	24,300	.	.	105	.
2017	24,600	.	.	105	.
2018	25,100	21,950	.	105	.
2019	25,750	22,550	.	105	.
2020	26,200	22,950	.	105	.
2021	26,500	23,200	.	105	.
2022	27,750	25,950	.	105	.

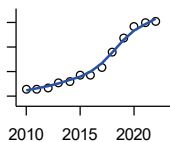
HUD 50% LOW-TO-MEDIUM INCOME (LMI) LIMIT - 4 PERSONS



U.S. Department of Housing and Urban Development (HUD)

Year	County	State of Kansas	Non Metro Kansas	County Rank	Per 1000 or \$ Per Capita
2010	26,650	.	.	45	.
2011	26,850	.	.	105	.
2012	27,200	.	.	105	.
2013	28,550	.	.	54	.
2014	28,700	.	.	55	.
2015	30,400	.	.	42	.
2016	30,300	.	.	38	.
2017	32,400	.	.	30	.
2018	36,100	36,550	.	11	.
2019	39,700	37,600	.	9	.
2020	42,850	38,250	.	7	.
2021	43,700	38,700	.	1	.
2022	44,000	43,300	.	7	.

HUD 80% LOW-TO-MEDIUM INCOME (LMI) LIMIT - 4 PERSONS



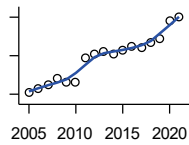
U.S. Department of Housing and Urban Development (HUD)

Year	County	State of Kansas	Non Metro Kansas	County Rank	Per 1000 or \$ Per Capita
2010	42,650	.	.	45	.
2011	42,950	.	.	105	.
2012	43,500	.	.	105	.
2013	45,650	.	.	54	.
2014	45,900	.	.	55	.
2015	48,600	.	.	42	.
2016	48,500	.	.	38	.
2017	51,850	.	.	30	.
2018	57,750	58,500	.	11	.
2019	63,500	60,150	.	9	.
2020	68,500	61,200	.	7	.
2021	69,900	61,900	.	1	.
2022	70,400	69,250	.	7	.

County: county value. Kansas: state value. County Rank: highest county value ranked #1. (\$000): thousands of dollars. Nonmetro Kansas: Kansas total less Metropolitan Areas as defined by the Office of Management and Budget (OMB; released 3/6/2020). Per 1000: For nonmoney amounts, Per 1000=(county value / county population for the same year as the data) x 1000. \$ Per capita=(county value / county population for the same year as the data). Value= . indicates missing or suppressed data or value not calculated.

Banking

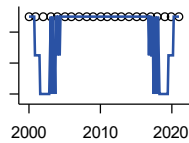
BANK DEPOSITS (1984-2004 in thousands; 2005- in millions)



Federal Deposit Insurance Corporation, Data Book, Operating Banks and Branches

Year	County	State of Kansas	Non Metro Kansas	County Rank	Per 1000 or \$ Per Capita
2005	21	48,304	17,000	105	13.7
2006	23	50,668	17,586	105	15.1
2007	25	54,057	18,517	105	16.9
2008	28	57,869	19,628	105	19.4
2009	26	57,763	20,031	105	17.7
2010	26	60,031	20,678	105	17.5
2011	39	61,094	21,347	105	25.6
2012	41	62,910	22,481	105	26.9
2013	42	64,547	22,795	104	26.9
2014	41	66,538	23,338	105	27.3
2015	43	68,160	23,367	104	28.6
2016	45	70,381	23,420	103	30.0
2017	44	73,329	23,928	102	29.0
2018	47	74,623	24,100	102	31.6
2019	49	76,436	24,488	102	32.3
2020	58	88,563	27,547	103	38.4
2021	60	97,055	30,122	103	39.8

NUMBER OF BANKS



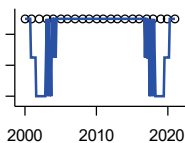
Federal Deposit Insurance Corporation, Data Book, Operating Banks and Branches

Year	County	State of Kansas	Non Metro Kansas	County Rank	Per 1000 or \$ Per Capita
2000	1	410	145	105	.
2001	1	410	136	105	.
2002	1	404	129	105	.
2003	1	397	121	105	.
2004	1	394	112	105	.
2005	1	388	101	105	.
2006	1	385	94	105	.
2007	1	382	91	105	.
2008	1	378	82	105	.
2009	1	374	79	105	.
2010	1	367	70	105	.
2011	1	359	61	105	.
2012	1	348	57	105	.
2013	1	332	45	105	.
2014	1	329	41	105	.
2015	1	320	31	105	.
2016	1	314	24	105	.
2017	1	301	13	105	.
2018	1	289	7	105	.
2019	1	279	3	105	.
2020	1	271	-1	105	.
2021	1	270	-6	105	.

County: county value. Kansas: state value. County Rank: highest county value ranked #1. (\$000): thousands of dollars. Nonmetro Kansas: Kansas total less Metropolitan Areas as defined by the Office of Management and Budget (OMB; released 3/6/2020). Per 1000: For nonmoney amounts, Per 1000=(county value / county population for the same year as the data) x 1000. \$ Per capita=(county value / county population for the same year as the data). Value= . indicates missing or suppressed data or value not calculated.

Banking

NUMBER OF BANKING OFFICES

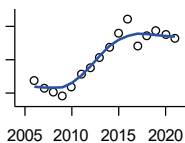


Federal Deposit Insurance Corporation, Data Book, Operating Banks and Branches

Year	County	State of Kansas	Non Metro Kansas	County Rank	Per 1000 or \$ Per Capita
2000	1	1,398	703	105	.
2001	1	1,424	708	105	.
2002	1	1,447	704	105	.
2003	1	1,461	708	105	.
2004	1	1,485	708	105	.
2005	1	1,505	711	105	.
2006	1	1,518	711	105	.
2007	1	1,543	717	105	.
2008	1	1,556	717	105	.
2009	1	1,569	716	105	.
2010	1	1,561	710	105	.
2011	1	1,559	707	105	.
2012	1	1,533	702	105	.
2013	1	1,518	696	105	.
2014	1	1,491	685	105	.
2015	1	1,472	675	105	.
2016	1	1,465	668	105	.
2017	1	1,452	666	105	.
2018	1	1,439	660	105	.
2019	1	1,439	663	105	.
2020	1	1,416	653	105	.
2021	1	1,392	641	105	.

Government

TANGIBLE ASSESSED VALUATION (KDoR, million\$; 2006-)



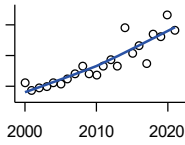
Kansas Department of Revenue, Division of Property Valuation, Statistical Report of Property Assessment and Taxation

Year	County	State of Kansas	Non Metro Kansas	County Rank	Per 1000 or \$ Per Capita
2006	28.8	28,964.3	10,316.9	103	18.9
2007	26.4	30,086.9	10,335.9	104	17.8
2008	25.2	31,000.3	10,856.9	104	17.4
2009	24.0	30,312.3	10,555.6	104	16.3
2010	26.8	29,450.2	10,158.7	103	18.0
2011	30.9	29,963.6	10,572.3	99	20.2
2012	32.7	30,382.9	10,876.2	99	21.5
2013	35.8	30,850.2	11,044.4	101	22.9
2014	38.9	31,783.0	11,388.9	100	25.9
2015	43.1	32,335.7	11,037.8	95	28.6
2016	47.2	33,156.3	10,889.6	92	31.4
2017	39.2	34,754.5	11,439.0	98	25.9
2018	42.2	36,566.1	11,907.1	97	28.3
2019	43.8	38,255.2	12,336.7	97	28.9
2020	42.7	39,333.9	12,219.3	95	28.2
2021	41.2	40,812.0	12,601.5	98	27.3

County: county value. Kansas: state value. County Rank: highest county value ranked #1. (\$000): thousands of dollars. Nonmetro Kansas: Kansas total less Metropolitan Areas as defined by the Office of Management and Budget (OMB; released 3/6/2020). Per 1000: For nonmoney amounts, Per 1000=(county value / county population for the same year as the data) x 1000. \$ Per capita=(county value / county population for the same year as the data). Value= . indicates missing or suppressed data or value not calculated.

Government

SALES TAX COLLECTIONS (\$)

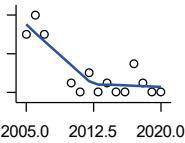


Kansas Department of Revenue. Use tax collections included beginning in calendar year 2018.

Year	County	State of Kansas	Non Metro Kansas	County Rank	Per 1000 or \$ Per Capita
2000	548,031	1,475,831,808	432,761,608	102	313,339.6
2001	428,645	1,481,026,688	426,316,284	104	252,887.9
2002	483,285	1,561,316,864	443,986,950	102	289,219.0
2003	493,605	1,626,782,976	461,658,700	103	304,131.2
2004	548,378	1,691,899,008	480,309,725	103	351,074.3
2005	542,834	1,744,980,352	497,494,867	104	354,561.7
2006	611,584	1,851,694,720	532,233,047	103	400,513.4
2007	711,187	1,917,546,752	559,319,583	103	480,207.2
2008	831,608	1,990,655,744	589,725,773	104	574,712.1
2009	699,553	1,866,223,078	548,627,132	103	476,210.3
2010	688,136	2,075,193,413	617,409,982	104	463,391.2
2011	827,263	2,347,193,367	702,671,534	104	542,112.1
2012	942,062	2,456,292,294	740,196,106	104	618,556.6
2013	832,054	2,489,204,048	746,226,565	105	533,368.2
2014	1,456,339	2,539,886,774	760,474,019	97	970,245.6
2015	1,038,797	2,642,374,740	750,090,163	103	690,230.4
2016	1,165,561	2,732,611,350	749,030,133	100	776,006.2
2017	864,342	2,726,104,521	744,246,491	103	570,522.6
2018	1,343,315	3,277,299,125	893,564,480	103	902,159.1
2019	1,304,910	3,395,631,405	939,607,762	103	859,624.7
2020	1,662,669	3,489,306,791	984,218,931	102	1,099,648.8
2021	1,404,918	3,981,293,227	1,098,391,422	104	931,643.2

Crime

CRIME INDEX OFFENSES



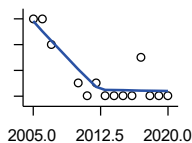
Kansas Bureau of Investigation, Note: Data are aggregated from reports by individual police departments and subject to be incomplete.

Year	County	State of Kansas	Non Metro Kansas	County Rank	Per 1000 or \$ Per Capita
2005	6	111,856	31,630	99	3.9
2006	8	110,032	.	97	5.2
2007	6	111,035	29,921	100	4.1
2010	1	98,354	26,909	101	0.7
2011	0	96,638	25,765	101	0.0
2012	2	98,914	26,963	103	1.3
2013	0	93,054	24,488	104	0.0
2014	1	86,323	23,341	102	0.7
2015	0	88,590	21,580	104	0.0
2016	0	90,589	21,565	102	0.0
2017	3	93,091	22,622	102	2.0
2018	1	92,062	20,325	104	0.7
2019	0	87,008	18,547	105	0.0
2020	0	87,346	17,762	104	0.0

County: county value. Kansas: state value. County Rank: highest county value ranked #1. (\$000): thousands of dollars. Nonmetro Kansas: Kansas total less Metropolitan Areas as defined by the Office of Management and Budget (OMB; released 3/6/2020). Per 1000: For nonmoney amounts, Per 1000=(county value / county population for the same year as the data) x 1000. \$ Per capita=(county value / county population for the same year as the data). Value= . indicates missing or suppressed data or value not calculated.

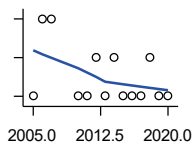
Crime

PROPERTY CRIMES



Kansas Bureau of Investigation, Note: Data are aggregated from reports by individual police departments and subject to be incomplete.

Year	County	State of Kansas	Non Metro Kansas	County Rank	Per 1000 or \$ Per Capita
2005	6	101,414	29,042	98	3.9
2006	6	99,110	.	97	3.9
2007	4	99,632	26,856	100	2.7
2010	1	87,926	24,133	101	0.7
2011	0	86,547	23,274	101	0.0
2012	1	88,707	24,220	103	0.7
2013	0	83,551	22,028	104	0.0
2014	0	76,794	20,858	102	0.0
2015	0	77,997	19,138	103	0.0
2016	0	79,549	19,207	102	0.0
2017	3	81,349	19,981	101	2.0
2018	0	79,695	17,769	104	0.0
2019	0	74,314	15,892	105	0.0
2020	0	73,450	15,100	104	0.0



VIOLENT CRIMES

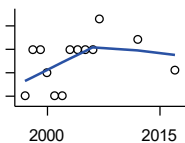
Kansas Bureau of Investigation, Note: Data are aggregated from reports by individual police departments and subject to be incomplete.

Year	County	State of Kansas	Non Metro Kansas	County Rank	Per 1000 or \$ Per Capita
2005	0	10,442	2,588	102	0.0
2006	2	10,922	.	90	1.3
2007	2	11,403	3,065	90	1.4
2010	0	10,428	2,776	101	0.0
2011	0	10,091	2,491	101	0.0
2012	1	10,207	2,743	100	0.7
2013	0	9,503	2,460	104	0.0
2014	1	9,529	2,483	101	0.7
2015	0	10,593	2,442	104	0.0
2016	0	11,040	2,358	102	0.0
2017	0	11,742	2,641	104	0.0
2018	1	12,367	2,556	97	0.7
2019	0	12,694	2,655	105	0.0
2020	0	13,896	2,662	104	0.0

County: county value. Kansas: state value. County Rank: highest county value ranked #1. (\$000): thousands of dollars. Nonmetro Kansas: Kansas total less Metropolitan Areas as defined by the Office of Management and Budget (OMB; released 3/6/2020). Per 1000: For nonmoney amounts, Per 1000=(county value / county population for the same year as the data) x 1000. \$ Per capita=(county value / county population for the same year as the data). Value= . indicates missing or suppressed data or value not calculated.

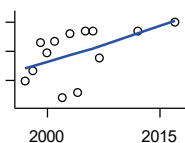
Agriculture

NUMBER OF FARMS



Kansas Agricultural Statistics, Kansas Farm Facts

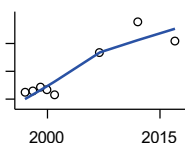
Year	County	State of Kansas	Non Metro Kansas	County Rank	Per 1000 or \$ Per Capita
1997	270	64,000	47,900	95	149.7
1998	290	65,000	48,850	94	161.0
1999	290	65,000	48,850	94	162.3
2000	280	64,000	48,030	96	160.1
2001	270	63,000	47,200	96	159.3
2002	270	63,000	47,200	96	161.6
2003	290	64,500	48,150	100	178.7
2004	290	64,500	48,150	100	185.7
2005	290	64,500	48,150	100	189.4
2006	290	64,000	47,650	100	189.9
2007	303	65,531	48,179	96	204.6
2012	294	61,773	45,655	93	193.0
2017	281	58,569	42,404	91	185.5



TOTAL ACRES HARVESTED

Kansas Agricultural Statistics, Kansas Farm Facts

Year	County	State of Kansas	Non Metro Kansas	County Rank	Per 1000 or \$ Per Capita
1997	139,450	22,846,000	19,430,580	89	77,300.4
1998	146,870	22,143,500	18,943,650	84	81,549.1
1999	166,060	21,708,900	18,581,750	69	92,926.7
2000	159,030	21,639,000	18,528,870	73	90,926.2
2001	167,000	21,847,900	18,689,750	72	98,525.1
2002	127,840	20,230,400	17,089,120	83	76,505.1
2003	172,450	21,827,700	18,661,920	68	106,253.9
2004	131,510	20,876,900	17,721,500	88	84,193.3
2005	173,620	21,936,500	18,807,930	69	113,403.0
2006	173,750	21,412,700	18,291,120	64	113,785.2
2007	155,106	19,886,655	17,164,743	66	104,730.6
2012	173,936	21,043,596	17,966,843	63	114,206.2
2017	179,926	21,837,465	18,543,057	63	118,763.0



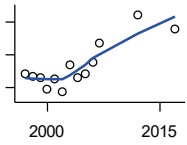
VALUE: LIVESTOCK AND POULTRY (\$000)

Kansas Agricultural Statistics, Kansas Farm Facts

Year	County	State of Kansas	Non Metro Kansas	County Rank	Per 1000 or \$ Per Capita
1997	7,316	2,806,445	2,500,305	101	4,055.4
1998	7,771	2,670,432	2,378,007	101	4,314.8
1999	9,241	2,849,061	2,554,528	99	5,171.2
2000	8,244	2,901,469	2,609,032	100	4,713.6
2001	6,531	2,693,274	2,437,187	99	3,853.1
2007	21,770	9,525,971	.	80	14,699.5
2012	32,817	11,476,571	10,883,216	60	21,547.6
2017	25,964	12,322,289	.	72	17,138.0

County: county value. Kansas: state value. County Rank: highest county value ranked #1. (\$000): thousands of dollars. Nonmetro Kansas: Kansas total less Metropolitan Areas as defined by the Office of Management and Budget (OMB; released 3/6/2020). Per 1000: For nonmoney amounts, Per 1000=(county value / county population for the same year as the data) x 1000. \$ Per capita=(county value / county population for the same year as the data). Value= . indicates missing or suppressed data or value not calculated.

Agriculture



VALUE:FIELD CROPS (\$000)
EXCLUDING GOVERNMENT
PROGRAM PAYMENTS

Kansas Agricultural Statistics, Kansas
Farm Facts

Year	County	State of Kansas	Non Metro Kansas	County Rank	Per 1000 or \$ Per Capita
1997	28,011	4,474,942	3,800,365	77	15,527.2
1998	26,748	3,594,319	3,124,409	62	14,851.7
1999	26,368	3,118,193	2,728,319	52	14,755.5
2000	19,311	2,915,660	2,540,052	69	11,041.2
2001	25,151	3,283,117	2,857,136	57	14,838.3
2002	17,166	3,011,855	2,560,580	76	10,272.9
2003	33,933	3,623,255	3,150,629	46	20,907.6
2004	25,812	3,445,688	2,896,603	59	16,525.0
2005	28,455	3,678,123	3,182,677	56	18,585.9
2006	35,331	4,308,716	3,684,132	51	23,137.5
2007	47,203	4,887,212	.	46	31,872.4
2012	64,411	6,983,993	6,044,551	46	42,292.2
2017	55,821	6,460,437	.	55	36,845.5

County: county value. Kansas: state value. County Rank: highest county value ranked #1. (\$000): thousands of dollars. Nonmetro Kansas: Kansas total less Metropolitan Areas as defined by the Office of Management and Budget (OMB; released 3/6/2020). Per 1000: For nonmoney amounts, Per 1000=(county value / county population for the same year as the data) x 1000. \$ Per capita=(county value / county population for the same year as the data). Value= . indicates missing or suppressed data or value not calculated.