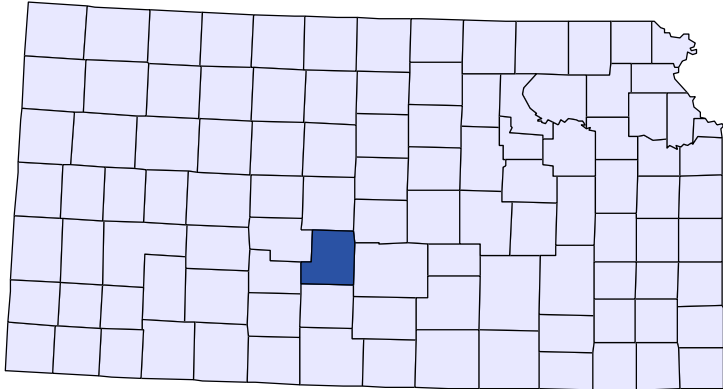




# Kansas County Profiles

## Stafford County



The University  
of Kansas

Institute for Policy  
& Social Research

**KU** INSTITUTE FOR POLICY  
& SOCIAL RESEARCH  

---

The University of Kansas

1541 Lilac Lane, Rm. 607  
Blake Hall  
Lawrence, KS 66045-3129

## Foreword

The Kansas County Profile Report is published by the Institute for Policy & Social Research (IPSR) at the University of Kansas with support from the KU University Center project.\* Special thanks to Xanthippe Wedel, senior research data engineer, who compiles and updates the county profiles and Genna Hurd, associate researcher, who provides editorial review.

County reports can be generated for any county in Kansas by simply clicking on the county from the web site:

<https://ipsr.ku.edu/ksdata/kcced/profiles/>

The Kansas County Profile Report contains 12 categories of information: Population, Vital Statistics and Health, Housing, Education, Social Environment, Business, Employment, Income, Banking, Government, Crime, and Agriculture. For more information about Kansas, please refer to the Kansas Statistical Abstract, available online at:

<https://ipsr.ku.edu/ksdata/ksah/>

We are always looking for ways to improve the Kansas County Profile Report and we welcome your suggestions and comments. Please address any correspondence to the Institute for Policy & Social Research, The University of Kansas, 607 Blake Hall, 1541 Lilac Lane, Lawrence, Kansas 66045-3129, e-mail [ipsr@ku.edu](mailto:ipsr@ku.edu) or call 785-864-3701.

*\*The KU University Center is a collaborative effort led by the Institute for Policy & Social Research at the University of Kansas. This project is supported by the Economic Development Administration, U.S. Department of Commerce, through its University Center Program.*

*The mission of EDA is to lead the federal economic development agenda by promoting innovation and competitiveness, preparing American regions for growth and success in the worldwide economy.*

## Kansas County Profiles Table of Contents

### Population

Total Population (Decennial Census)	1
Estimated Population (Current Population Reports)	2
Urban Population	2
Rural Population	3
Net Migration (Decade Ending...)	3
Median Age	3

### Population (Age Groups)

Population Under 18 (Decennial Census)	3
Population Age 18 and Over (Decennial Census)	4
Population Age 65 and Over (Decennial Census)	4
Population Age 85 and Over (Decennial Census)	4

### Vital Statistics and Health

Live Births	5
Deaths	5
Marriages	6
Divorces and Annulments	6
Physicians: M.D. Physicians	7
Physicians: D.O. Physicians	7
Dentists	8
Number of Hospitals	8
Number of Hospital Beds	9

### Housing

Housing Units (Decennial Census)	9
Housing Units (Estimated)	10
Occupied Housing Units	10
Owner Occupied Housing Units	10
Renter Occupied Housing Units	11
Vacant Housing Units	11
Median Value (\$): Owner Occupied Housing Units	11
Median Contract Rent (\$)	12
Fair Market Rent: 2 Bedrooms	12

### Education

Population Age 25 and Over	13
Percent of Population 25+ with High School or Higher Education	13
Percent of Population 25+ with Bachelors Degree or Higher Education	14
Public School Enrollment (FTE- School Year Beginning...)	14
Pupil/Teacher Ratio (School Year Beginning...)	15

## Kansas County Profiles Table of Contents

### Social Environment

Total Child Care Facilities	15
Preschools	16
Food Stamp Beneficiaries	16
Percent of Population Receiving Food Stamps	17
Estimated Number of People in Poverty	17
Estimated Percent of People in Poverty	18
Estimated Number of Related Children Age 5 to 17 in Families in Poverty	18
Estimated Percent of Related Children Age 5 to 17 in Families in Poverty	19
Estimated Number Under 18 in Poverty	19
Estimated Percent Under 18 in Poverty	20

### Business

Establishments: Total	21
Establishments: 1-19 Employees	22
Establishments: 20-99 Employees	22
Establishments: 100-499 Employees	23
Establishments: 500 or More Employees	23
Establishments: Forestry, Fishing, Hunting, and Ag Support	24
Establishments: Mining	24
Establishments: Utilities	25
Establishments: Construction	25
Establishments: Manufacturing	26
Establishments: Wholesale Trade	26
Establishments: Retail Trade	27
Establishments: Transportation and Warehousing	27
Establishments: Information	28
Establishments: Finance and Insurance	28
Establishments: Real Estate, Rental, and Leasing	29
Establishments: Professional, Scientific, and Technical Services	29
Establishments: Management of Companies and Enterprises	30
Establishments: Admin, Support, Waste Management, and Remediation	30
Establishments: Educational Services	31
Establishments: Health Care and Social Assistance	31
Establishments: Arts, Entertainment, and Recreation	32
Establishments: Accommodation and Food Services	32
Establishments: Other Services	33

## Kansas County Profiles Table of Contents

<b>Business</b>	
Total Annual Payroll (\$000)	34
Total Annual Payroll (\$000): Forestry, Fishing, Hunting, and Ag Support	35
Total Annual Payroll (\$000): Mining	35
Total Annual Payroll (\$000): Utilities	36
Total Annual Payroll (\$000): Construction	36
Total Annual Payroll (\$000): Manufacturing	37
Total Annual Payroll (\$000): Wholesale Trade	37
Total Annual Payroll (\$000): Retail Trade	38
Total Annual Payroll (\$000): Transportation and Warehousing	38
Total Annual Payroll (\$000): Information	39
Total Annual Payroll (\$000): Finance and Insurance	39
Total Annual Payroll (\$000): Real Estate, Rental, and Leasing	40
Total Annual Payroll (\$000): Professional, Scientific, and Technical Services	40
Total Annual Payroll (\$000): Management of Companies and Enterprises	41
Total Annual Payroll (\$000): Admin, Support, Waste Management, and Remediation	41
Total Annual Payroll (\$000): Educational Services	42
Total Annual Payroll (\$000): Health Care and Social Assistance	42
Total Annual Payroll (\$000): Arts, Entertainment, and Recreation	43
Total Annual Payroll (\$000): Accommodation and Food Services	43
Total Annual Payroll (\$000): Other Services	44
Nominal Taxable Retail Sales (Million\$)	44
Retail Pull Factor	45
<b>Employment</b>	
Civilian Labor Force (BLS - Place of Residence)	46
Employed (BLS - Place of Residence)	47
Unemployed (BLS - Place of Residence)	48
Unemployment Rate (BLS - Place of Residence)	49
BEA Employment: Total (Place of Work)	49
BEA Employment: Farm	50
BEA Employment: Non-Farm	50
Average Wage per Job (\$)	51
BEA Employment: Forestry, Fishing, Hunting, and Ag Support	51
BEA Employment: Mining	52
BEA Employment: Utilities	52
BEA Employment: Construction	53
BEA Employment: Manufacturing	53
BEA Employment: Wholesale Trade	54
BEA Employment: Retail Trade	54
BEA Employment: Transportation and Warehousing	55
BEA Employment: Information	55
BEA Employment: Finance and Insurance	56
BEA Employment: Real Estate, Rental, and Leasing	56
BEA Employment: Professional and Technical Services	57
BEA Employment: Management of Companies and Enterprises	57
BEA Employment: Administrative and Waste Services	58
BEA Employment: Educational Services	58
BEA Employment: Health Care and Social Assistance	59
BEA Employment: Arts, Entertainment, and Recreation	59
BEA Employment: Government and Government Enterprises	60
BEA Employment: Accommodation and Food Services	60
BEA Employment: Other Services, Except Public Administration	61

## Kansas County Profiles Table of Contents

### Income

BEA Per Capita Personal Income (\$)	61
Sources of Personal Income: Total Personal Income (\$000)	62
Sources of Personal Income: Wages And Salaries (\$000)	62
Sources of Personal Income: Proprietors-Farm (\$000)	63
Sources of Personal Income: Proprietors-Nonfarm (\$000)	63
Sources of Personal Income: Dividends, Interest, Rent (\$000)	64
Sources of Personal Income: Transfer Payments (\$000)	64
Sources of Personal Income: Less Social Insurance (\$000)	65
HUD Median Family Income	65
HUD 30% Low-To-Medium Income (LMI) Limit - 4 Persons	66
HUD 50% Low-To-Medium Income (LMI) Limit - 4 Persons	66
HUD 80% Low-To-Medium Income (LMI) Limit - 4 Persons	66

### Banking

Bank Deposits (\$000)	67
Number of Banks	67
Number of Banking Offices	68

### Government

Tangible Assessed Valuation (million\$)	68
Sales Tax Collections	69

### Crime

Crime Index Offenses	69
Property Crimes	70
Violent Crimes	70

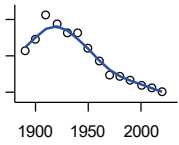
### Agriculture

Number of Farms	71
Total Acres Harvested	71
Value: Livestock and Poultry (\$000)	71
Value: Field Crops (\$000) Excluding Government Program Payments	72

**Population**

**DECENNIAL CENSUS:TOTAL POPULATION**

U.S. Census Bureau: Decennial Census

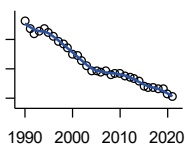


Year	County	State of Kansas	Non Metro Kansas	County Rank	Per 1000 or \$ Per Capita
1890	8,520	1,427,096	968,413	64	.
1900	9,829	1,470,495	981,206	63	.
1910	12,510	1,690,949	1,138,294	56	.
1920	11,559	1,769,257	1,153,525	60	.
1930	10,460	1,880,999	1,180,056	64	.
1940	10,487	1,801,028	1,097,216	57	.
1950	8,816	1,905,299	1,046,823	62	.
1960	7,451	2,178,611	1,021,510	65	.
1970	5,943	2,246,578	958,104	72	.
1980	5,694	2,363,679	980,085	72	.
1990	5,365	2,477,574	939,416	70	.
2000	4,789	2,688,418	959,507	72	.
2010	4,437	2,853,118	929,981	73	.
2020	4,072	2,937,880	892,006	72	.

County: county value. Kansas: state value. County Rank: highest county value ranked #1. (\$000): thousands of dollars. Nonmetro Kansas: Kansas total less Metropolitan Areas as defined by the Office of Management and Budget (OMB; released 3/6/2020). Per 1000: For nonmoney amounts, Per 1000=(county value / county population for the same year as the data) x 1000. \$ Per capita=(county value / county population for the same year as the data). Value= . indicates missing or suppressed data or value not calculated.

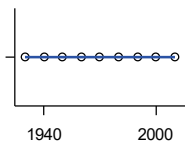
**Population**

**ESTIMATED POPULATION**



U.S. Census Bureau

Year	County	State of Kansas	Non Metro Kansas	County Rank	Per 1000 or \$ Per Capita
1990	5,317	2,481,349	938,607	70	.
1991	5,181	2,498,722	938,965	71	.
1992	5,096	2,532,394	942,759	72	.
1993	5,151	2,556,547	947,515	72	.
1994	5,178	2,580,513	952,178	72	.
1995	5,114	2,601,007	957,771	72	.
1996	5,053	2,614,554	959,455	72	.
1997	4,972	2,635,292	960,225	72	.
1998	4,927	2,660,598	960,569	72	.
1999	4,865	2,678,338	960,704	72	.
2000	4,752	2,693,681	959,230	72	.
2001	4,723	2,702,162	952,607	72	.
2002	4,646	2,713,535	945,985	73	.
2003	4,559	2,723,004	941,474	73	.
2004	4,468	2,734,373	937,623	73	.
2005	4,473	2,745,299	932,852	73	.
2006	4,440	2,762,931	928,809	73	.
2007	4,460	2,783,785	927,643	73	.
2008	4,404	2,808,076	926,248	73	.
2009	4,422	2,832,704	926,755	73	.
2010	4,429	2,858,190	930,028	73	.
2011	4,380	2,869,225	927,675	73	.
2012	4,350	2,885,257	925,152	73	.
2013	4,339	2,893,212	922,383	72	.
2014	4,281	2,900,475	917,854	73	.
2015	4,215	2,909,011	912,199	73	.
2016	4,186	2,910,844	905,099	73	.
2017	4,186	2,908,718	897,981	73	.
2018	4,162	2,911,359	892,656	72	.
2019	4,156	2,913,314	887,455	72	.
2020	4,064	2,935,880	889,750	72	.
2021	4,034	2,934,582	886,438	72	.



**URBAN POPULATION**

U.S. Census Bureau: Decennial Census

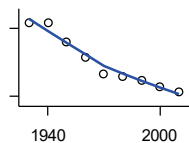
Year	County	State of Kansas	Non Metro Kansas	County Rank	Per 1000 or \$ Per Capita
1930	0	729,834	336,666	105	.
1940	0	753,941	349,228	105	.
1950	0	993,220	398,923	105	.
1960	0	1,328,741	457,447	105	.
1970	0	1,484,870	450,543	105	.
1980	0	1,575,899	474,769	105	.
1990	0	1,712,564	464,205	105	.
2000	0	1,920,081	488,011	105	.
2010	0	2,116,961	485,780	105	.

County: county value. Kansas: state value. County Rank: highest county value ranked #1. (\$000): thousands of dollars. Nonmetro Kansas: Kansas total less Metropolitan Areas as defined by the Office of Management and Budget (OMB; released 3/6/2020). Per 1000: For nonmoney amounts, Per 1000=(county value / county population for the same year as the data) x 1000. \$ Per capita=(county value / county population for the same year as the data). Value= . indicates missing or suppressed data or value not calculated.



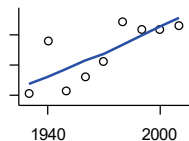
**Population**

**RURAL POPULATION**



U.S. Census Bureau

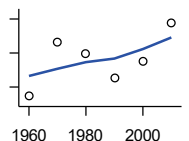
Year	County	State of Kansas	Non Metro Kansas	County Rank	Per 1000 or \$ Per Capita
1930	10,460	1,151,165	843,390	52	.
1940	10,487	1,047,087	747,988	44	.
1950	8,816	912,079	647,900	43	.
1960	7,451	849,870	564,063	44	.
1970	5,943	761,708	509,972	51	.
1980	5,694	787,780	505,873	51	.
1990	5,365	765,010	475,211	51	.
2000	4,789	768,337	471,900	54	.
2010	4,437	736,157	444,201	56	.



**NET MIGRATION: DECADE ENDING...**

calculated by the Institute for Policy and Social Research, The University of Kansas

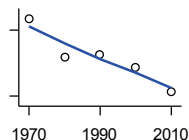
Year	County	State of Kansas	Non Metro Kansas	County Rank	Per 1000 or \$ Per Capita
1930	-2,441	-66,132	-101,869	87	-233.4
1940	-684	-192,649	-166,022	13	-65.2
1950	-2,344	-84,329	-158,379	71	-265.9
1960	-1,895	-38,999	-146,640	71	-254.3
1970	-1,395	-119,662	-105,116	77	-234.7
1980	-53	-21,983	-6,184	47	-9.3
1990	-311	-61,835	-79,274	29	-58.0
2000	-337	68,960	4,247	90	-70.4
2010	-205	5,578	-50,648	42	-46.2



**MEDIAN AGE**

U.S. Census Bureau: Decennial Census

Year	County	State of Kansas	Non Metro Kansas	County Rank	Per 1000 or \$ Per Capita
1960	36.9	26.9	.	26	.
1970	43.3	28.7	.	6	.
1980	41.9	30.1	.	8	.
1990	39.0	32.9	.	29	.
2000	41.0	35.2	.	36	.
2010	45.6	36.0	.	29	.



**POPULATION UNDER 18 (DECENNIAL CENSUS)**

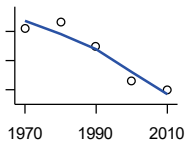
U.S. Census Bureau: Decennial Census

Year	County	State of Kansas	Non Metro Kansas	County Rank	Per 1000 or \$ Per Capita
1970	1,704	746,354	306,227	74	.
1980	1,351	649,035	263,919	74	.
1990	1,377	661,614	250,107	71	.
2000	1,260	712,993	250,757	75	.
2010	1,037	726,939	229,213	74	.

County: county value. Kansas: state value. County Rank: highest county value ranked #1. (\$000): thousands of dollars. Nonmetro Kansas: Kansas total less Metropolitan Areas as defined by the Office of Management and Budget (OMB; released 3/6/2020). Per 1000: For nonmoney amounts, Per 1000=(county value / county population for the same year as the data) x 1000. \$ Per capita=(county value / county population for the same year as the data). Value= . indicates missing or suppressed data or value not calculated.

**Population**

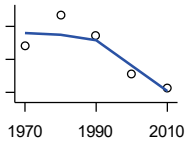
**POPULATION AGE 18 AND OVER  
(DECENNIAL CENSUS)**



U.S. Census Bureau: Decennial Census

Year	County	State of Kansas	Non Metro Kansas	County Rank	Per 1000 or \$ Per Capita
1970	4,239	1,500,224	654,288	71	.
1980	4,332	1,714,282	716,684	71	.
1990	3,988	1,815,960	689,309	69	.
2000	3,529	1,975,425	709,154	73	.
2010	3,400	2,126,179	700,768	72	.

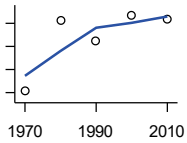
**POPULATION AGE 65 AND OVER  
(DECENNIAL CENSUS)**



U.S. Census Bureau: Decennial Census

Year	County	State of Kansas	Non Metro Kansas	County Rank	Per 1000 or \$ Per Capita
1970	1,182	266,201	149,049	68	.
1980	1,369	306,263	164,932	64	.
1990	1,248	342,571	168,579	66	.
2000	1,015	356,229	161,769	71	.
2010	930	376,116	154,214	70	.

**POPULATION AGE 85 AND OVER  
(DECENNIAL CENSUS)**



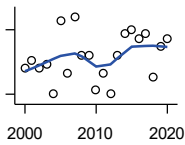
U.S. Census Bureau: Decennial Census

Year	County	State of Kansas	Non Metro Kansas	County Rank	Per 1000 or \$ Per Capita
1970	101	23,899	13,698	69	.
1980	162	33,455	18,804	62	.
1990	145	42,241	22,970	74	.
2000	167	51,770	26,644	69	.
2010	164	59,318	26,197	68	.

County: county value. Kansas: state value. County Rank: highest county value ranked #1. (\$000): thousands of dollars. Nonmetro Kansas: Kansas total less Metropolitan Areas as defined by the Office of Management and Budget (OMB; released 3/6/2020). Per 1000: For nonmoney amounts, Per 1000=(county value / county population for the same year as the data) x 1000. \$ Per capita=(county value / county population for the same year as the data). Value= . indicates missing or suppressed data or value not calculated.

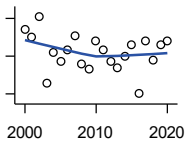
**Vital Statistics and Health**

**BIRTHS (LIVE)**



Kansas Department of Health and Environment

Year	County	State of Kansas	Non Metro Kansas	County Rank	Per 1000 or \$ Per Capita
2000	46	39,654	12,980	77	9.6
2001	48	38,832	12,527	73	10.2
2002	46	39,338	12,476	75	9.9
2003	47	39,353	12,342	71	10.3
2004	40	39,553	12,398	81	9.0
2005	57	39,701	12,382	68	12.7
2006	45	40,896	12,726	77	10.1
2007	58	41,951	12,990	68	13.0
2008	49	41,815	12,970	74	11.1
2009	49	41,388	12,949	77	11.1
2010	41	40,439	12,200	77	9.2
2011	45	39,628	12,098	75	10.3
2012	40	40,304	12,217	80	9.2
2013	49	38,805	11,877	76	11.3
2014	54	39,193	12,052	72	12.6
2015	55	39,126	11,836	71	13.0
2016	53	38,048	11,467	75	12.7
2017	54	36,464	10,968	69	12.9
2018	44	36,268	10,826	76	10.6
2019	51	35,395	10,506	71	12.3
2020	53	34,368	10,222	68	13.0



**DEATHS**

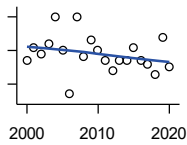
Kansas Department of Health and Environment

Year	County	State of Kansas	Non Metro Kansas	County Rank	Per 1000 or \$ Per Capita
2000	74	24,676	11,175	66	15.5
2001	70	24,590	10,807	69	14.8
2002	81	24,968	11,079	60	17.4
2003	46	24,417	10,615	84	10.1
2004	62	23,720	10,369	69	13.9
2005	57	24,632	10,599	74	12.7
2006	63	24,489	10,538	69	14.2
2007	71	24,413	10,601	66	15.9
2008	56	24,896	10,593	73	12.7
2009	53	23,997	9,938	71	12.0
2010	68	24,428	10,105	64	15.3
2011	63	25,114	10,520	69	14.4
2012	57	25,084	10,259	73	13.1
2013	54	25,347	10,249	73	12.4
2014	60	25,731	10,275	69	14.0
2015	66	26,611	10,539	67	15.7
2016	40	26,129	10,231	83	9.6
2017	68	26,725	10,452	63	16.2
2018	58	27,213	10,389	67	13.9
2019	66	27,312	10,569	65	15.9
2020	68	31,667	11,850	65	16.7

County: county value. Kansas: state value. County Rank: highest county value ranked #1. (\$000): thousands of dollars. Nonmetro Kansas: Kansas total less Metropolitan Areas as defined by the Office of Management and Budget (OMB; released 3/6/2020). Per 1000: For nonmoney amounts, Per 1000=(county value / county population for the same year as the data) x 1000. \$ Per capita=(county value / county population for the same year as the data). Value= . indicates missing or suppressed data or value not calculated.

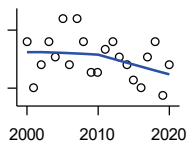
**Vital Statistics and Health**

**MARRIAGES**



Kansas Department of Health and Environment

Year	County	State of Kansas	Non Metro Kansas	County Rank	Per 1000 or \$ Per Capita
2000	22	20,426	7,333	90	4.6
2001	26	20,457	7,441	82	5.5
2002	24	19,783	6,794	84	5.2
2003	27	18,722	6,469	76	5.9
2004	35	19,174	6,756	69	7.8
2005	25	18,745	6,481	80	5.6
2006	12	18,836	6,433	99	2.7
2007	35	18,910	6,464	67	7.8
2008	23	18,717	6,283	80	5.2
2009	28	18,268	6,015	71	6.3
2010	25	18,150	5,925	78	5.6
2011	22	17,897	5,977	83	5.0
2012	19	18,154	5,752	81	4.4
2013	22	17,328	5,533	77	5.1
2014	22	17,655	5,535	74	5.1
2015	26	17,595	5,400	71	6.2
2016	22	17,948	5,340	72	5.3
2017	21	17,274	5,163	74	5.0
2018	18	16,362	4,999	80	4.3
2019	29	15,403	4,650	65	7.0
2020	20	14,038	4,066	69	4.9



**DIVORCES AND ANNULMENTS**

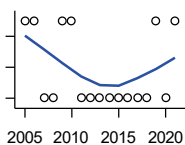
Kansas Department of Health and Environment

Year	County	State of Kansas	Non Metro Kansas	County Rank	Per 1000 or \$ Per Capita
2000	11	10,105	4,000	85	2.3
2001	5	9,885	3,818	96	1.1
2002	8	9,645	3,716	92	1.7
2003	11	8,644	3,464	78	2.4
2004	9	8,759	3,506	88	2.0
2005	14	8,476	3,311	71	3.1
2006	8	9,145	3,387	89	1.8
2007	14	9,347	3,402	71	3.1
2008	11	9,818	3,655	80	2.5
2009	7	10,333	3,463	91	1.6
2010	7	10,579	3,530	95	1.6
2011	10	10,445	3,347	83	2.3
2012	11	9,782	3,040	77	2.5
2013	9	9,085	2,973	84	2.1
2014	8	8,441	2,682	86	1.9
2015	6	8,036	2,704	92	1.4
2016	5	7,198	2,424	93	1.2
2017	9	6,494	2,315	72	2.2
2018	11	6,538	2,269	63	2.6
2019	4	6,398	2,357	99	1.0
2020	8	5,169	1,866	71	2.0

County: county value. Kansas: state value. County Rank: highest county value ranked #1. (\$000): thousands of dollars. Nonmetro Kansas: Kansas total less Metropolitan Areas as defined by the Office of Management and Budget (OMB; released 3/6/2020). Per 1000: For nonmoney amounts, Per 1000=(county value / county population for the same year as the data) x 1000. \$ Per capita=(county value / county population for the same year as the data). Value= . indicates missing or suppressed data or value not calculated.

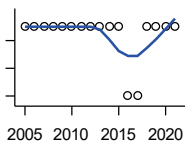
**Vital Statistics and Health**

**PHYSICIANS: M.D. PHYSICIANS**



Kansas Department of Health and Environment (1981-2005,2010-);Kansas Health Policy Authority (2006-2009)

Year	County	State of Kansas	Non Metro Kansas	County Rank	Per 1000 or \$ Per Capita
2005	1	4,241	912	96	0.2
2006	1	4,310	953	99	0.2
2007	0	5,309	1,046	105	0.0
2008	0	5,110	1,016	105	0.0
2009	1	5,249	996	98	0.2
2010	1	5,192	979	98	0.2
2011	0	5,243	983	105	0.0
2012	0	5,693	1,033	105	0.0
2013	0	6,106	1,071	105	0.0
2014	0	5,839	951	105	0.0
2015	0	5,703	855	105	0.0
2016	0	4,278	643	105	0.0
2017	0	6,332	1,047	105	0.0
2018	0	6,079	1,065	105	0.0
2019	1	6,435	1,036	97	0.2
2020	0	6,668	1,045	105	0.0
2021	1	6,745	1,042	99	0.2



**PHYSICIANS: D.O. PHYSICIANS**

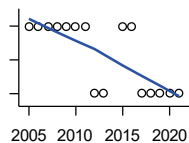
Kansas Department of Health and Environment (1981-2005,2010-);Kansas Health Policy Authority (2006-2009)

Year	County	State of Kansas	Non Metro Kansas	County Rank	Per 1000 or \$ Per Capita
2005	1	553	174	68	0.2
2006	1	508	171	66	0.2
2007	1	569	169	66	0.2
2008	1	558	166	66	0.2
2009	1	564	160	66	0.2
2010	1	583	169	66	0.2
2011	1	502	152	62	0.2
2012	1	718	200	67	0.2
2013	1	829	210	65	0.2
2014	1	817	189	62	0.2
2015	1	819	190	63	0.2
2016	0	632	136	105	0.0
2017	0	579	129	105	0.0
2018	1	871	164	64	0.2
2019	1	951	212	65	0.2
2020	1	1,018	204	66	0.2
2021	1	1,095	217	74	0.2

County: county value. Kansas: state value. County Rank: highest county value ranked #1. (\$000): thousands of dollars. Nonmetro Kansas: Kansas total less Metropolitan Areas as defined by the Office of Management and Budget (OMB; released 3/6/2020). Per 1000: For nonmoney amounts, Per 1000=(county value / county population for the same year as the data) x 1000. \$ Per capita=(county value / county population for the same year as the data). Value= . indicates missing or suppressed data or value not calculated.

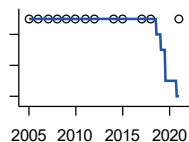
**Vital Statistics and Health**

**DENTISTS**



Kansas Department of Health and Environment (1981-2006,2010-);Kansas Health Policy Authority (2007-2009)

Year	County	State of Kansas	Non Metro Kansas	County Rank	Per 1000 or \$ Per Capita
2005	1	1,347	363	92	0.2
2006	1	1,381	361	92	0.2
2007	1	1,335	350	91	0.2
2008	1	1,392	353	90	0.2
2009	1	1,353	350	90	0.2
2010	1	1,401	365	91	0.2
2011	1	1,338	346	88	0.2
2012	0	1,434	392	105	0.0
2013	0	1,212	328	105	0.0
2015	1	1,240	327	89	0.2
2016	1	1,456	350	87	0.2
2017	0	1,467	350	105	0.0
2018	0	1,604	359	105	0.0
2019	0	1,646	355	105	0.0
2020	0	1,646	355	105	0.0
2021	0	1,688	362	105	0.0



**NUMBER OF HOSPITALS**

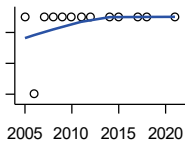
American Hospital Association, American Hospital Association Guide to the Health Care Field

Year	County	State of Kansas	Non Metro Kansas	County Rank	Per 1000 or \$ Per Capita
2005	1	158	105	96	.
2006	1	158	105	96	.
2007	1	159	104	95	.
2008	1	159	104	95	.
2009	1	158	105	96	.
2010	1	158	104	96	.
2011	1	158	103	96	.
2012	1	157	103	96	.
2014	1	156	.	96	.
2015	1	155	103	96	.
2017	1	157	102	96	.
2018	1	154	99	95	.
2021	1	151	.	95	.

County: county value. Kansas: state value. County Rank: highest county value ranked #1. (\$000): thousands of dollars. Nonmetro Kansas: Kansas total less Metropolitan Areas as defined by the Office of Management and Budget (OMB; released 3/6/2020). Per 1000: For nonmoney amounts, Per 1000=(county value / county population for the same year as the data) x 1000. \$ Per capita=(county value / county population for the same year as the data). Value= . indicates missing or suppressed data or value not calculated.

**Vital Statistics and Health**

**NUMBER OF HOSPITAL BEDS**

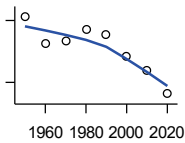


Kansas Department of Health and Environment

Year	County	State of Kansas	Non Metro Kansas	County Rank	Per 1000 or \$ Per Capita
2005	25	12,389	5,687	85	5.6
2006	24	11,992	5,514	87	5.4
2007	25	12,171	5,637	84	5.6
2008	25	12,332	5,700	85	5.7
2009	25	12,283	5,652	86	5.7
2010	25	12,218	5,521	86	5.6
2011	25	12,182	5,335	85	5.7
2012	25	12,002	5,355	85	5.7
2014	25	12,034	.	84	5.8
2015	25	11,926	5,330	85	5.9
2017	25	11,491	4,825	83	6.0
2018	25	11,448	4,583	82	6.0
2021	25	11,199	.	76	6.2

**Housing**

**HOUSING UNITS (DECENNIAL)**



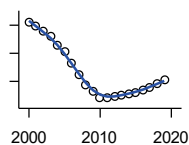
U.S. Census Bureau: Decennial Census

Year	County	State of Kansas	Non Metro Kansas	County Rank	Per 1000 or \$ Per Capita
1950	2,838	586,650	328,210	60	321.9
1960	2,576	672,899	329,380	63	345.7
1970	2,602	789,735	363,824	69	437.8
1980	2,709	955,207	416,877	70	475.8
1990	2,666	1,044,112	417,062	67	496.9
2000	2,458	1,131,395	422,218	69	513.3
2010	2,319	1,233,215	424,050	70	522.7
2020	2,088	1,275,689	413,120	72	512.8

County: county value. Kansas: state value. County Rank: highest county value ranked #1. (\$000): thousands of dollars. Nonmetro Kansas: Kansas total less Metropolitan Areas as defined by the Office of Management and Budget (OMB; released 3/6/2020). Per 1000: For nonmoney amounts, Per 1000=(county value / county population for the same year as the data) x 1000. \$ Per capita=(county value / county population for the same year as the data). Value= . indicates missing or suppressed data or value not calculated.

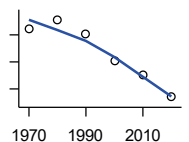
**Housing**

**HOUSING UNITS (ESTIMATED)**



U.S. Census Bureau

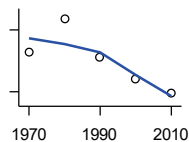
Year	County	State of Kansas	Non Metro Kansas	County Rank	Per 1000 or \$ Per Capita
2000	2,456	1,134,529	422,560	69	512.8
2001	2,449	1,146,858	423,876	69	518.5
2002	2,439	1,160,129	425,089	69	525.0
2003	2,431	1,171,620	425,936	69	533.2
2004	2,414	1,184,702	426,593	69	540.3
2005	2,402	1,195,791	426,964	69	537.0
2006	2,382	1,206,692	426,713	69	536.5
2007	2,362	1,217,608	426,090	69	529.6
2008	2,344	1,225,625	425,768	69	532.2
2009	2,333	1,230,552	424,776	69	527.6
2010	2,320	1,234,456	424,174	70	522.9
2011	2,321	1,238,052	424,549	70	529.9
2012	2,323	1,241,992	425,116	70	534.0
2013	2,325	1,246,675	425,699	70	535.8
2014	2,328	1,253,284	426,269	70	543.8
2015	2,331	1,258,999	426,844	70	553.0
2016	2,335	1,265,684	427,465	70	557.8
2017	2,339	1,273,536	427,746	70	558.8
2018	2,345	1,280,649	428,099	70	563.4
2019	2,352	1,288,401	428,495	70	565.9



**OCCUPIED HOUSING UNITS**

U.S. Census Bureau: Decennial Census

Year	County	State of Kansas	Non Metro Kansas	County Rank	Per 1000 or \$ Per Capita
1970	2,248	727,364	326,494	67	378.3
1980	2,307	872,239	371,693	70	405.2
1990	2,203	944,726	365,901	69	410.6
2000	2,010	1,037,891	375,313	71	419.7
2010	1,907	1,112,096	370,269	72	429.8
2020	1,739	1,151,360	356,330	72	427.1



**OWNER OCCUPIED HOUSING UNITS**

U.S. Census Bureau: Decennial Census

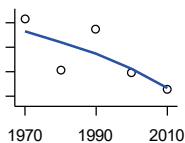
Year	County	State of Kansas	Non Metro Kansas	County Rank	Per 1000 or \$ Per Capita
1970	1,690	502,585	236,338	70	284.4
1980	1,854	612,433	277,096	70	325.6
1990	1,667	641,762	263,099	69	310.7
2000	1,563	718,703	271,350	69	326.4
2010	1,494	753,532	261,763	71	336.7

County: county value. Kansas: state value. County Rank: highest county value ranked #1. (\$000): thousands of dollars. Nonmetro Kansas: Kansas total less Metropolitan Areas as defined by the Office of Management and Budget (OMB; released 3/6/2020). Per 1000: For nonmoney amounts, Per 1000=(county value / county population for the same year as the data) x 1000. \$ Per capita=(county value / county population for the same year as the data). Value= . indicates missing or suppressed data or value not calculated.



**Housing**

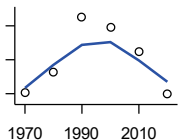
**RENTER OCCUPIED HOUSING UNITS**



U.S. Census Bureau: Decennial Census

Year	County	State of Kansas	Non Metro Kansas	County Rank	Per 1000 or \$ Per Capita
1970	558	224,779	90,156	66	93.9
1980	453	259,806	94,597	70	79.6
1990	536	302,964	102,802	67	99.9
2000	447	319,188	103,963	70	93.3
2010	413	358,564	108,506	74	93.1

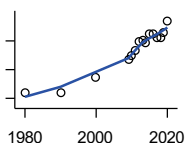
**VACANT HOUSING UNITS**



U.S. Census Bureau: Decennial Census

Year	County	State of Kansas	Non Metro Kansas	County Rank	Per 1000 or \$ Per Capita
1970	352	60,058	35,954	61	59.2
1980	381	77,912	41,584	55	66.9
1990	463	99,386	51,161	61	86.3
2000	448	93,309	46,904	58	93.5
2010	412	121,119	53,781	73	92.9
2020	349	124,329	56,790	75	85.7

**MEDIAN VALUE (\$): OWNER OCCUPIED HOUSING UNITS**



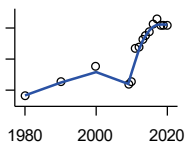
U.S. Census Bureau, Decennial Census (- 2000), (2009 -) American Community Survey five-year average ending in year shown.

Year	County	State of Kansas	Non Metro Kansas	County Rank	Per 1000 or \$ Per Capita
1980	23,700	37,800	.	79	.
1990	24,000	52,200	.	92	.
2000	34,400	83,500	.	95	.
2009	47,000	118,500	.	99	.
2010	50,200	122,600	.	98	.
2011	53,000	125,500	.	94	.
2012	59,300	127,400	.	89	.
2013	60,900	128,400	.	89	.
2014	58,500	129,400	.	95	.
2015	65,100	132,000	.	91	.
2016	64,900	135,300	.	95	.
2017	61,800	139,200	.	98	.
2018	62,200	145,400	.	101	.
2019	65,900	151,900	.	101	.
2020	73,900	157,600	.	93	.

County: county value. Kansas: state value. County Rank: highest county value ranked #1. (\$000): thousands of dollars. Nonmetro Kansas: Kansas total less Metropolitan Areas as defined by the Office of Management and Budget (OMB; released 3/6/2020). Per 1000: For nonmoney amounts, Per 1000=(county value / county population for the same year as the data) x 1000. \$ Per capita=(county value / county population for the same year as the data). Value= . indicates missing or suppressed data or value not calculated.

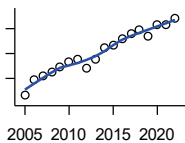
**Housing**

**MEDIAN CONTRACT RENT (\$)**



U.S. Census Bureau, Decennial Census (- 2000), (2009 -) American Community Survey five-year average ending in year shown.

Year	County	State of Kansas	Non Metro Kansas	County Rank	Per 1000 or \$ Per Capita
1980	161	219	.	60	.
1990	252	372	.	72	.
2000	353	498	.	71	.
2009	238	491	.	98	.
2010	256	507	.	100	.
2011	467	699	.	93	.
2012	476	715	.	90	.
2013	530	732	.	72	.
2014	552	748	.	72	.
2015	579	757	.	63	.
2016	629	775	.	46	.
2017	659	801	.	38	.
2018	616	831	.	68	.
2019	617	850	.	72	.
2020	616	863	.	73	.



**FAIR MARKET RENT: 2 BEDROOMS**

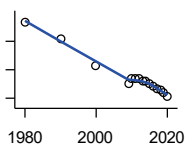
U.S. Department of Housing and Urban Development (HUD)

Year	County	State of Kansas	Non Metro Kansas	County Rank	Per 1000 or \$ Per Capita
2005	431	.	.	104	.
2006	497	.	.	105	.
2007	512	.	.	105	.
2008	525	628	.	105	.
2009	547	653	.	105	.
2010	566	678	.	105	.
2011	575	684	.	105	.
2012	540	660	.	105	.
2013	577	712	.	105	.
2014	622	746	.	105	.
2015	634	756	.	105	.
2016	658	781	.	105	.
2017	681	811	.	105	.
2018	697	815	.	105	.
2019	672	828	.	105	.
2020	714	855	.	105	.
2021	718	874	.	105	.
2022	742	879	.	105	.

County: county value. Kansas: state value. County Rank: highest county value ranked #1. (\$000): thousands of dollars. Nonmetro Kansas: Kansas total less Metropolitan Areas as defined by the Office of Management and Budget (OMB; released 3/6/2020). Per 1000: For nonmoney amounts, Per 1000=(county value / county population for the same year as the data) x 1000. \$ Per capita=(county value / county population for the same year as the data). Value= . indicates missing or suppressed data or value not calculated.

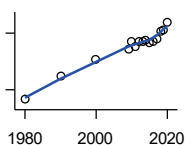
**Education**

**POPULATION AGE 25+**



U.S. Census Bureau, Decennial Census (- 2000), (2009 -) American Community Survey five-year average ending in year shown.

Year	County	State of Kansas	Non Metro Kansas	County Rank	Per 1000 or \$ Per Capita
1980	3,874	1,388,102	596,639	.	.
1990	3,640	1,565,936	608,745	.	.
2000	3,254	1,701,207	618,131	.	.
2009	3,011	1,775,427	600,188	.	.
2010	3,085	1,802,904	608,716	.	.
2011	3,073	1,822,400	610,386	.	.
2012	3,073	1,838,079	611,103	.	.
2013	3,046	1,850,010	610,374	.	.
2014	3,038	1,861,894	609,612	.	.
2015	3,005	1,869,698	606,967	.	.
2016	2,976	1,878,495	604,563	.	.
2017	2,941	1,886,741	601,076	.	.
2018	2,919	1,894,675	598,487	.	.
2019	2,886	1,902,279	595,501	.	.
2020	2,829	1,911,990	593,923	.	.



**PERCENT HS GRADUATE OR HIGHER AGE 25+**

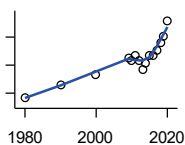
U.S. Census Bureau, Decennial Census (- 2000), (2009 -) American Community Survey five-year average ending in year shown.

Year	County	State of Kansas	Non Metro Kansas	County Rank	Per 1000 or \$ Per Capita
1980	72.4	73.3	.	28	.
1990	78.7	81.3	.	35	.
2000	82.9	86.0	.	76	.
2009	85.6	89.0	.	83	.
2010	87.7	89.2	.	71	.
2011	86.6	89.5	.	85	.
2012	87.9	89.7	.	76	.
2013	87.9	89.8	.	79	.
2014	88.2	90.0	.	80	.
2015	87.5	90.2	.	84	.
2016	87.9	90.3	.	82	.
2017	88.5	90.5	.	81	.
2018	90.4	90.7	.	66	.
2019	90.7	91.0	.	69	.
2020	92.9	91.4	.	43	.

County: county value. Kansas: state value. County Rank: highest county value ranked #1. (\$000): thousands of dollars. Nonmetro Kansas: Kansas total less Metropolitan Areas as defined by the Office of Management and Budget (OMB; released 3/6/2020). Per 1000: For nonmoney amounts, Per 1000=(county value / county population for the same year as the data) x 1000. \$ Per capita=(county value / county population for the same year as the data). Value= . indicates missing or suppressed data or value not calculated.

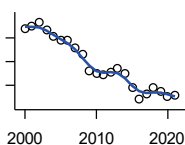
**Education**

**PERCENT BACHELORS DEGREE OR HIGHER AGE 25+**



U.S. Census Bureau, Decennial Census (- 2000), (2009 -) American Community Survey five-year average ending in year shown.

Year	County	State of Kansas	Non Metro Kansas	County Rank	Per 1000 or \$ Per Capita
1980	14.1	17.0	.	21	.
1990	16.5	21.1	.	24	.
2000	18.4	25.8	.	30	.
2009	21.3	28.8	.	26	.
2010	20.7	29.3	.	33	.
2011	21.8	29.7	.	27	.
2012	20.8	30.0	.	37	.
2013	19.1	30.3	.	63	.
2014	20.3	30.7	.	51	.
2015	21.8	31.0	.	40	.
2016	21.7	31.6	.	48	.
2017	22.6	32.3	.	43	.
2018	23.9	32.9	.	35	.
2019	25.2	33.4	.	28	.
2020	27.9	33.9	.	20	.



**PUBLIC SCHOOL ENROLLMENT (FTE) SCHOOL YEAR BEGINNING...**

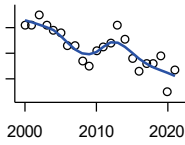
Kansas State Department of Education

Year	County	State of Kansas	Non Metro Kansas	County Rank	Per 1000 or \$ Per Capita
2000	1,039.1	448,150.8	166,722.5	67	217.0
2001	1,047.7	447,047.1	164,365.0	64	221.8
2002	1,066.3	444,860.3	161,555.4	63	229.5
2003	1,032.4	443,620.6	159,130.2	63	226.5
2004	1,004.5	441,957.2	156,566.3	63	224.8
2005	990.3	442,708.4	155,197.2	61	221.4
2006	989.7	444,878.7	153,842.3	61	222.9
2007	955.7	446,831.3	152,337.1	62	214.3
2008	931.3	447,730.0	150,572.7	64	211.5
2009	860.4	453,202.5	151,246.8	69	194.6
2010	848.6	455,405.0	151,023.8	70	191.3
2011	845.2	456,000.5	150,257.9	70	193.0
2012	854.3	458,496.4	150,463.0	69	196.4
2013	872.9	461,950.0	150,420.9	69	201.2
2014	848.1	464,395.4	150,499.4	69	198.1
2015	789.9	463,504.0	149,539.3	69	187.4
2016	739.6	459,920.3	147,293.5	71	176.7
2017	765.1	477,977.9	152,096.3	71	182.8
2018	787.8	476,481.7	150,456.8	70	189.3
2019	771.4	476,525.1	150,045.2	72	185.6
2020	753.5	462,088.0	146,369.6	71	185.0
2021	756.5	463,652.4	147,500.4	70	187.5

County: county value. Kansas: state value. County Rank: highest county value ranked #1. (\$000): thousands of dollars. Nonmetro Kansas: Kansas total less Metropolitan Areas as defined by the Office of Management and Budget (OMB; released 3/6/2020). Per 1000: For nonmoney amounts, Per 1000=(county value / county population for the same year as the data) x 1000. \$ Per capita=(county value / county population for the same year as the data). Value= . indicates missing or suppressed data or value not calculated.

**Education**

**PUPIL/TEACHER RATIO SCHOOL YEAR BEGINNING...**

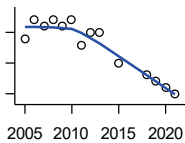


Kansas State Department of Education

Year	County	State of Kansas	Non Metro Kansas	County Rank	Per 1000 or \$ Per Capita
2000	12.1	15.4	13.9	74	.
2001	12.1	15.3	13.8	73	.
2002	12.5	15.4	13.9	65	.
2003	12.1	15.5	13.8	75	.
2004	11.9	15.3	13.6	76	.
2005	11.8	15.0	13.4	69	.
2006	11.3	14.7	13.2	75	.
2007	11.3	14.6	13.1	72	.
2008	10.7	14.4	12.9	87	.
2009	10.5	14.8	13.2	94	.
2010	11.1	15.2	13.6	88	.
2011	11.3	15.1	13.5	81	.
2012	11.4	15.1	13.5	80	.
2013	12.1	15.1	13.5	68	.
2014	11.5	15.0	13.6	74	.
2015	10.8	15.2	13.9	90	.
2016	10.3	15.1	13.7	95	.
2017	10.6	15.5	13.9	94	.
2018	10.6	15.3	13.8	95	.
2019	10.9	15.2	13.7	84	.
2020	9.5	14.7	13.4	102	.
2021	10.4	14.8	13.5	93	.

**Social Environment**

**CHILD CARE FACILITIES: TOTAL CHILD CARE FACILITIES**



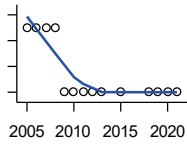
Kansas Department of Health and Environment, Bureau of Adult and Child Care

Year	County	State of Kansas	Non Metro Kansas	County Rank	Per 1000 or \$ Per Capita
2005	14	8,258	3,378	77	3.1
2006	17	8,442	3,429	72	3.8
2007	16	8,241	3,317	73	3.6
2008	17	8,011	3,150	71	3.9
2009	16	7,853	3,066	71	3.6
2010	17	7,354	2,858	69	3.8
2011	13	6,835	2,623	72	3.0
2012	15	6,346	2,409	67	3.4
2013	15	5,754	2,179	63	3.5
2015	10	5,289	2,146	74	2.4
2018	8	4,607	1,904	80	1.9
2019	7	4,287	1,774	80	1.7
2020	6	4,274	1,798	87	1.5
2021	5	4,002	1,700	91	1.2

County: county value. Kansas: state value. County Rank: highest county value ranked #1. (\$000): thousands of dollars. Nonmetro Kansas: Kansas total less Metropolitan Areas as defined by the Office of Management and Budget (OMB; released 3/6/2020). Per 1000: For nonmoney amounts, Per 1000=(county value / county population for the same year as the data) x 1000. \$ Per capita=(county value / county population for the same year as the data). Value= . indicates missing or suppressed data or value not calculated.

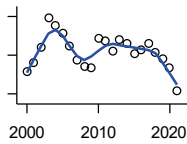
**Social Environment**

**CHILD CARE FACILITIES:  
PRESCHOOLS**



Kansas Department of Health and Environment, Bureau of Adult and Child Care

Year	County	State of Kansas	Non Metro Kansas	County Rank	Per 1000 or \$ Per Capita
2005	1	243	140	79	0.2
2006	1	221	127	76	0.2
2007	1	208	119	76	0.2
2008	1	204	114	73	0.2
2009	0	194	107	105	0.0
2010	0	194	112	105	0.0
2011	0	209	123	105	0.0
2012	0	201	121	105	0.0
2013	0	140	84	105	0.0
2015	0	185	113	105	0.0
2018	0	150	94	105	0.0
2019	0	134	83	105	0.0
2020	0	126	78	105	0.0
2021	0	120	74	105	0.0



**FOOD STAMP BENEFICIARIES**

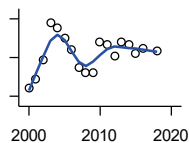
Kansas Social and Rehabilitation Services

Year	County	State of Kansas	Non Metro Kansas	County Rank	Per 1000 or \$ Per Capita
2000	257	110,619	44,825	57	53.7
2001	279	117,241	46,741	56	59.1
2002	320	131,726	52,342	55	68.9
2003	397	155,908	61,280	53	87.1
2004	376	167,971	65,852	56	84.2
2005	356	175,710	67,261	56	79.6
2006	324	182,821	67,487	57	73.0
2007	288	184,035	66,979	58	64.6
2008	271	187,377	67,160	62	61.5
2009	269	208,007	73,637	64	60.8
2010	342	259,609	90,919	63	77.1
2011	336	296,542	101,155	67	76.7
2012	309	303,257	102,478	70	71.0
2013	340	316,424	105,345	65	78.4
2014	330	301,377	100,761	67	77.1
2015	305	277,614	93,353	67	72.4
2016	314	258,412	88,343	65	75.0
2017	329	239,592	82,070	62	78.6
2018	306	219,738	75,208	62	73.5
2019	291	205,261	69,899	62	70.0
2020	267	198,457	66,721	62	65.6
2021	207	203,424	68,883	71	51.3

County: county value. Kansas: state value. County Rank: highest county value ranked #1. (\$000): thousands of dollars. Nonmetro Kansas: Kansas total less Metropolitan Areas as defined by the Office of Management and Budget (OMB; released 3/6/2020). Per 1000: For nonmoney amounts, Per 1000=(county value / county population for the same year as the data) x 1000. \$ Per capita=(county value / county population for the same year as the data). Value= . indicates missing or suppressed data or value not calculated.

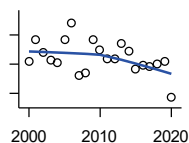
**Social Environment**

**PERCENT OF POPULATION RECEIVING FOOD STAMPS**



U.S. Dept. of Agriculture Food and Nutrition Service (1990-1997); Kansas Social and Rehabilitation Services (1998- )

Year	County	State of Kansas	Non Metro Kansas	County Rank	Per 1000 or \$ Per Capita
2000	5.4	4.1	.	24	.
2001	5.9	4.3	.	21	.
2002	6.9	4.9	.	18	.
2003	8.8	5.7	.	14	.
2004	8.5	6.2	.	18	.
2005	8.0	6.4	.	22	.
2006	7.4	6.6	.	28	.
2007	6.5	6.6	.	38	.
2008	6.2	6.7	.	39	.
2009	6.2	7.4	.	44	.
2010	7.8	9.1	.	42	.
2011	7.7	10.3	.	49	.
2012	7.1	10.5	.	59	.
2013	7.8	10.9	.	48	.
2014	7.7	10.4	.	50	.
2015	7.2	9.6	.	52	.
2016	7.5	8.9	.	41	.
2018	7.3	7.5	.	39	.



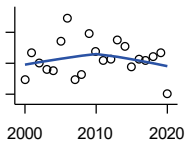
**ESTIMATED NUMBER OF PEOPLE IN POVERTY**

U.S. Census Bureau, Small Area Income and Poverty Estimates

Year	County	State of Kansas	Non Metro Kansas	County Rank	Per 1000 or \$ Per Capita
2000	559	235,087	98,984	65	116.7
2001	632	252,134	106,257	61	133.8
2002	591	265,673	107,542	68	127.2
2003	563	278,163	107,323	64	123.5
2004	556	297,733	111,534	66	124.4
2005	633	310,667	118,768	61	141.5
2006	693	327,102	123,700	60	156.1
2007	510	301,828	111,953	70	114.3
2008	521	307,804	113,015	70	118.3
2009	633	359,692	123,394	61	143.1
2010	600	374,677	131,502	66	135.2
2011	566	383,859	134,912	69	129.2
2012	568	392,095	133,800	71	130.6
2013	619	391,718	134,067	66	142.7
2014	594	381,506	130,213	68	138.8
2015	531	366,069	123,073	70	126.0
2016	547	343,773	121,314	70	130.7
2017	542	335,371	116,854	67	129.5
2018	549	336,892	114,490	69	131.9
2019	559	319,931	110,692	62	134.5
2020	435	300,931	100,998	71	106.8

County: county value. Kansas: state value. County Rank: highest county value ranked #1. (\$000): thousands of dollars. Nonmetro Kansas: Kansas total less Metropolitan Areas as defined by the Office of Management and Budget (OMB; released 3/6/2020). Per 1000: For nonmoney amounts, Per 1000=(county value / county population for the same year as the data) x 1000. \$ Per capita=(county value / county population for the same year as the data). Value= . indicates missing or suppressed data or value not calculated.

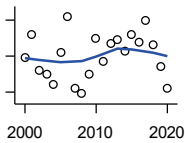
**Social Environment**



ESTIMATED % OF PEOPLE IN POVERTY

U.S. Census Bureau, Small Area Income and Poverty Estimates

Year	County	State of Kansas	Non Metro Kansas	County Rank	Per 1000 or \$ Per Capita
2000	11.9	8.9	.	20	.
2001	13.7	9.5	.	10	.
2002	13.0	10.0	.	17	.
2003	12.6	10.4	.	23	.
2004	12.5	11.1	.	28	.
2005	14.4	11.7	.	22	.
2006	15.9	12.2	.	16	.
2007	11.9	11.2	.	49	.
2008	12.3	11.3	.	43	.
2009	14.9	13.2	.	24	.
2010	13.8	13.5	.	39	.
2011	13.2	13.8	.	51	.
2012	13.3	14.0	.	45	.
2013	14.5	13.9	.	34	.
2014	14.1	13.5	.	32	.
2015	12.8	12.9	.	40	.
2016	13.3	12.2	.	38	.
2017	13.2	11.9	.	33	.
2018	13.4	11.9	.	35	.
2019	13.7	11.3	.	25	.
2020	11.0	10.6	.	50	.



EST. NUMBER OF RELATED CHILDREN AGE 5 TO 17 IN FAMILIES IN POVERTY

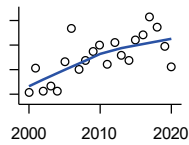
U.S. Census Bureau, Small Area Income and Poverty Estimates

Year	County	State of Kansas	Non Metro Kansas	County Rank	Per 1000 or \$ Per Capita
2000	129	50,388	21,854	65	26.9
2001	142	53,755	23,094	60	30.1
2002	122	52,453	21,423	61	26.3
2003	120	55,419	21,809	62	26.3
2004	114	59,392	22,313	64	25.5
2005	132	60,203	24,244	61	29.5
2006	152	64,427	25,326	56	34.2
2007	112	61,149	23,639	65	25.1
2008	109	59,842	22,661	64	24.8
2009	120	71,850	26,251	67	27.1
2010	140	81,077	29,804	67	31.6
2011	127	82,311	29,306	71	29.0
2012	137	87,594	29,781	69	31.5
2013	139	84,325	29,253	65	32.0
2014	133	83,873	29,354	64	31.1
2015	142	78,192	27,482	58	33.7
2016	138	67,810	25,074	59	33.0
2017	150	67,873	25,032	58	35.8
2018	136	68,153	24,928	63	32.7
2019	124	64,613	23,117	61	29.8
2020	112	59,792	21,143	64	27.5

County: county value. Kansas: state value. County Rank: highest county value ranked #1. (\$000): thousands of dollars. Nonmetro Kansas: Kansas total less Metropolitan Areas as defined by the Office of Management and Budget (OMB; released 3/6/2020). Per 1000: For nonmoney amounts, Per 1000=(county value / county population for the same year as the data) x 1000. \$ Per capita=(county value / county population for the same year as the data). Value= . indicates missing or suppressed data or value not calculated.



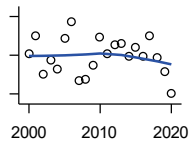
**Social Environment**



EST. % OF RELATED CHILDREN AGE 5 TO 17 IN FAMILIES IN POVERTY

U.S. Census Bureau, Small Area Income and Poverty Estimates

Year	County	State of Kansas	Non Metro Kansas	County Rank	Per 1000 or \$ Per Capita
2000	14.1	10.0	.	30	.
2001	16.1	10.8	.	19	.
2002	14.2	10.5	.	25	.
2003	14.7	11.3	.	21	.
2004	14.2	12.5	.	33	.
2005	16.6	12.8	.	25	.
2006	19.4	13.2	.	11	.
2007	16.0	12.6	.	29	.
2008	16.7	12.3	.	23	.
2009	17.5	14.7	.	30	.
2010	18.0	15.9	.	37	.
2011	16.4	16.2	.	52	.
2012	18.2	17.2	.	35	.
2013	17.2	16.5	.	46	.
2014	16.8	16.4	.	51	.
2015	18.4	15.3	.	28	.
2016	18.8	13.2	.	19	.
2017	20.3	13.4	.	14	.
2018	19.5	13.5	.	18	.
2019	17.9	12.9	.	22	.
2020	16.2	11.9	.	29	.



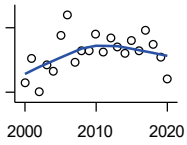
ESTIMATED NUMBER UNDER 18 IN POVERTY

U.S. Census Bureau, Small Area Income and Poverty Estimates

Year	County	State of Kansas	Non Metro Kansas	County Rank	Per 1000 or \$ Per Capita
2000	201	82,619	34,843	63	42.0
2001	220	87,487	36,724	60	46.6
2002	180	84,181	32,870	60	38.7
2003	195	93,896	36,004	60	42.8
2004	186	98,641	36,272	62	41.6
2005	217	100,254	39,118	59	48.5
2006	234	105,193	41,054	57	52.7
2007	174	100,242	37,881	66	39.0
2008	175	100,146	37,552	63	39.7
2009	189	118,187	42,682	67	42.7
2010	219	129,009	46,428	63	49.4
2011	201	133,478	46,832	70	45.9
2012	211	135,261	46,294	67	48.5
2013	212	131,251	44,952	65	48.9
2014	199	125,562	43,933	65	46.5
2015	208	119,994	41,828	60	49.3
2016	199	100,996	37,387	59	47.5
2017	220	102,858	37,955	58	52.6
2018	197	102,616	36,991	63	47.3
2019	183	97,920	34,797	59	44.0
2020	161	88,491	30,767	66	39.5

County: county value. Kansas: state value. County Rank: highest county value ranked #1. (\$000): thousands of dollars. Nonmetro Kansas: Kansas total less Metropolitan Areas as defined by the Office of Management and Budget (OMB; released 3/6/2020). Per 1000: For nonmoney amounts, Per 1000=(county value / county population for the same year as the data) x 1000. \$ Per capita=(county value / county population for the same year as the data). Value= . indicates missing or suppressed data or value not calculated.

**Social Environment**



**ESTIMATED PERCENT UNDER 18 IN POVERTY**

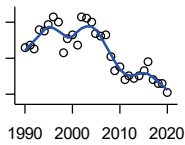
U.S. Census Bureau, Small Area Income and Poverty Estimates

Year	County	State of Kansas	Non Metro Kansas	County Rank	Per 1000 or \$ Per Capita
2000	16.9	11.9	.	24	.
2001	19.1	12.7	.	16	.
2002	16.1	12.1	.	19	.
2003	18.6	13.8	.	16	.
2004	17.9	14.6	.	20	.
2005	21.3	15.2	.	13	.
2006	23.2	15.4	.	9	.
2007	18.8	14.7	.	27	.
2008	19.8	14.6	.	23	.
2009	19.9	17.1	.	31	.
2010	21.4	18.1	.	28	.
2011	19.7	18.8	.	43	.
2012	21.0	19.0	.	32	.
2013	20.2	18.4	.	35	.
2014	19.6	17.6	.	33	.
2015	20.8	16.9	.	21	.
2016	19.8	14.3	.	20	.
2017	21.8	14.7	.	15	.
2018	20.5	14.8	.	19	.
2019	19.3	14.3	.	22	.
2020	17.2	13.0	.	30	.

County: county value. Kansas: state value. County Rank: highest county value ranked #1. (\$000): thousands of dollars. Nonmetro Kansas: Kansas total less Metropolitan Areas as defined by the Office of Management and Budget (OMB; released 3/6/2020). Per 1000: For nonmoney amounts, Per 1000=(county value / county population for the same year as the data) x 1000. \$ Per capita=(county value / county population for the same year as the data). Value= . indicates missing or suppressed data or value not calculated.

**Business**

**ESTABLISHMENTS TOTAL COUNTY BUSINESS PATTERNS**



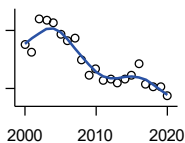
U.S. Census Bureau, County Business Patterns. Beginning with the 2017 data, any tabulation with fewer than 3 establishments were omitted from the release. Data for these establishments are included in the broader total.

Year	County	State of Kansas	Non Metro Kansas	County Rank	Per 1000 or \$ Per Capita
1990	146	65,858	26,802	69	27.2
1991	147	65,941	26,750	72	28.4
1992	145	67,630	27,229	73	28.5
1993	156	68,930	27,655	72	30.3
1994	155	69,822	27,763	72	29.9
1995	159	70,894	28,111	70	31.1
1996	163	72,017	28,353	70	32.3
1997	160	73,924	28,884	72	32.2
1998	143	74,019	28,749	74	29.0
1999	151	74,486	28,536	74	31.0
2000	153	74,939	28,475	73	31.9
2001	147	74,565	28,282	74	31.1
2002	163	75,077	28,183	69	35.1
2003	162	74,972	27,998	69	35.5
2004	160	75,827	28,009	70	35.8
2005	154	76,173	27,830	70	34.4
2006	152	76,446	27,653	70	34.2
2007	153	77,157	27,736	70	34.3
2008	141	76,096	27,314	71	32.0
2009	133	74,698	26,839	75	30.1
2010	135	74,301	26,739	73	30.4
2011	128	73,598	26,555	76	29.2
2012	130	73,944	26,534	77	29.9
2013	129	73,816	26,393	77	29.7
2014	130	74,055	26,292	77	30.4
2015	133	74,526	26,355	74	31.6
2016	138	74,884	26,172	71	33.0
2017	128	74,947	26,093	77	30.6
2018	126	74,559	25,802	74	30.3
2019	126	74,292	25,536	74	30.3
2020	121	73,982	25,178	77	29.7

County: county value. Kansas: state value. County Rank: highest county value ranked #1. (\$000): thousands of dollars. Nonmetro Kansas: Kansas total less Metropolitan Areas as defined by the Office of Management and Budget (OMB; released 3/6/2020). Per 1000: For nonmoney amounts, Per 1000=(county value / county population for the same year as the data) x 1000. \$ Per capita=(county value / county population for the same year as the data). Value= . indicates missing or suppressed data or value not calculated.

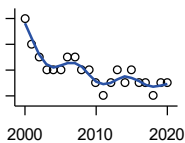
**Business**

**ESTABLISHMENTS: 1-19  
EMPLOYEES**



U.S. Census Bureau, County Business Patterns. Beginning with the 2017 data, any tabulation with fewer than 3 establishments were omitted from the release. Data for these establishments are included in the broader total.

Year	County	State of Kansas	Non Metro Kansas	County Rank	Per 1000 or \$ Per Capita
2000	143	64,527	25,381	72	29.9
2001	139	64,176	25,248	73	29.4
2002	156	64,886	25,208	69	33.6
2003	155	64,714	25,020	67	34.0
2004	154	65,554	24,995	67	34.5
2005	148	65,796	24,839	69	33.1
2006	145	65,764	24,589	69	32.7
2007	146	66,446	24,701	67	32.7
2008	135	65,322	24,257	69	30.7
2009	127	64,128	23,851	72	28.7
2010	130	64,015	23,857	70	29.3
2011	124	63,251	23,571	74	28.3
2012	125	63,519	23,575	75	28.7
2013	123	63,197	23,396	76	28.3
2014	125	63,113	23,229	72	29.2
2015	127	63,280	23,227	71	30.1
2016	133	63,630	23,117	70	31.8
2017	122	63,619	23,022	74	29.1
2018	121	63,233	22,745	73	29.1
2019	121	62,904	22,489	72	29.1
2020	116	62,634	22,173	75	28.5



**ESTABLISHMENTS: 20-99  
EMPLOYEES**

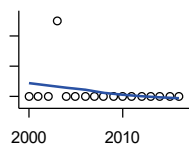
U.S. Census Bureau, County Business Patterns. Beginning with the 2017 data, any tabulation with fewer than 3 establishments were omitted from the release. Data for these establishments are included in the broader total.

Year	County	State of Kansas	Non Metro Kansas	County Rank	Per 1000 or \$ Per Capita
2000	10	8,714	2,653	69	2.1
2001	8	8,692	2,593	73	1.7
2002	7	8,582	2,554	78	1.5
2003	6	8,642	2,568	83	1.3
2004	6	8,658	2,590	83	1.3
2005	6	8,685	2,553	85	1.3
2006	7	8,922	2,612	79	1.6
2007	7	8,938	2,574	81	1.6
2008	6	8,939	2,587	84	1.4
2009	6	8,848	2,551	79	1.4
2010	5	8,612	2,454	89	1.1
2011	4	8,668	2,540	96	0.9
2012	5	8,700	2,500	89	1.1
2013	6	8,870	2,541	84	1.4
2014	5	9,121	2,590	89	1.2
2015	6	9,374	2,664	86	1.4
2016	5	9,412	2,596	90	1.2
2017	5	9,487	2,638	85	1.2
2018	4	9,485	2,621	92	1.0
2019	5	9,485	2,591	85	1.2
2020	5	9,471	2,545	82	1.2

County: county value. Kansas: state value. County Rank: highest county value ranked #1. (\$000): thousands of dollars. Nonmetro Kansas: Kansas total less Metropolitan Areas as defined by the Office of Management and Budget (OMB; released 3/6/2020). Per 1000: For nonmoney amounts, Per 1000=(county value / county population for the same year as the data) x 1000. \$ Per capita=(county value / county population for the same year as the data). Value= . indicates missing or suppressed data or value not calculated.

**Business**

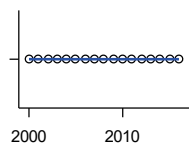
**ESTABLISHMENTS: 100-499 EMPLOYEES**



U.S. Census Bureau, County Business Patterns. Beginning with the 2017 data, any tabulation with fewer than 3 establishments were omitted from the release. Data for these establishments are included in the broader total.

Year	County	State of Kansas	Non Metro Kansas	County Rank	Per 1000 or \$ Per Capita
2000	0	1,555	409	105	0.0
2001	0	1,555	406	105	0.0
2002	0	1,464	386	105	0.0
2003	1	1,470	378	83	0.2
2004	0	1,463	388	105	0.0
2005	0	1,537	400	105	0.0
2006	0	1,598	407	105	0.0
2007	0	1,602	416	105	0.0
2008	0	1,653	421	105	0.0
2009	0	1,551	394	105	0.0
2010	0	1,513	382	105	0.0
2011	0	1,523	395	105	0.0
2012	0	1,567	410	105	0.0
2013	0	1,581	407	105	0.0
2014	0	1,641	421	105	0.0
2015	0	1,693	414	105	0.0
2016	0	1,671	406	105	0.0

**ESTABLISHMENTS: 500 OR MORE EMPLOYEES**



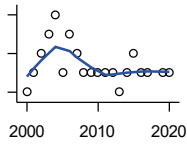
U.S. Census Bureau, County Business Patterns. Beginning with the 2017 data, any tabulation with fewer than 3 establishments were omitted from the release. Data for these establishments are included in the broader total.

Year	County	State of Kansas	Non Metro Kansas	County Rank	Per 1000 or \$ Per Capita
2000	0	143	32	105	0.0
2001	0	142	35	105	0.0
2002	0	145	35	105	0.0
2003	0	146	32	105	0.0
2004	0	152	36	105	0.0
2005	0	155	38	105	0.0
2006	0	162	45	105	0.0
2007	0	171	45	105	0.0
2008	0	182	49	105	0.0
2009	0	171	43	105	0.0
2010	0	161	46	105	0.0
2011	0	156	49	105	0.0
2012	0	158	49	105	0.0
2013	0	168	49	105	0.0
2014	0	180	52	105	0.0
2015	0	179	50	105	0.0
2016	0	171	53	105	0.0

County: county value. Kansas: state value. County Rank: highest county value ranked #1. (\$000): thousands of dollars. Nonmetro Kansas: Kansas total less Metropolitan Areas as defined by the Office of Management and Budget (OMB; released 3/6/2020). Per 1000: For nonmoney amounts, Per 1000=(county value / county population for the same year as the data) x 1000. \$ Per capita=(county value / county population for the same year as the data). Value= . indicates missing or suppressed data or value not calculated.

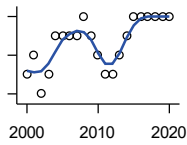
**Business**

**ESTABLISHMENTS: FORESTRY, FISHING, HUNTING, AND AG SUPPORT**



U.S. Census Bureau, County Business Patterns. Beginning with the 2017 data, any tabulation with fewer than 3 establishments were omitted from the release. Data for these establishments are included in the broader total.

Year	County	State of Kansas	Non Metro Kansas	County Rank	Per 1000 or \$ Per Capita
2000	2	190	149	43	0.4
2001	3	217	168	32	0.6
2002	4	224	176	21	0.9
2003	5	217	173	12	1.1
2004	6	211	165	8	1.3
2005	3	188	148	28	0.7
2006	5	193	158	12	1.1
2007	4	212	170	20	0.9
2008	3	197	158	29	0.7
2009	3	191	154	28	0.7
2010	3	192	161	26	0.7
2011	3	193	157	26	0.7
2012	3	204	164	28	0.7
2013	2	208	166	54	0.5
2014	3	194	152	22	0.7
2015	4	192	149	14	0.9
2016	3	181	142	23	0.7
2017	3	194	.	26	0.7
2019	3	185	.	26	0.7
2020	3	181	.	25	0.7



**ESTABLISHMENTS: MINING**

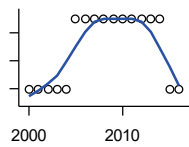
U.S. Census Bureau, County Business Patterns. Beginning with the 2017 data, any tabulation with fewer than 3 establishments were omitted from the release. Data for these establishments are included in the broader total.

Year	County	State of Kansas	Non Metro Kansas	County Rank	Per 1000 or \$ Per Capita
2000	4	868	619	44	0.8
2001	5	878	622	38	1.1
2002	3	847	615	52	0.6
2003	4	864	633	44	0.9
2004	6	880	647	38	1.3
2005	6	941	695	38	1.3
2006	6	991	734	38	1.4
2007	6	1,000	759	38	1.3
2008	7	1,047	799	35	1.6
2009	6	1,016	772	37	1.4
2010	5	1,009	762	42	1.1
2011	4	1,013	763	46	0.9
2012	4	1,048	789	48	0.9
2013	5	1,060	802	47	1.2
2014	6	1,102	828	44	1.4
2015	7	1,069	810	35	1.7
2016	7	990	747	36	1.7
2017	7	920	.	35	1.7
2018	7	900	.	32	1.7
2019	7	864	.	32	1.7
2020	7	825	.	33	1.7

County: county value. Kansas: state value. County Rank: highest county value ranked #1. (\$000): thousands of dollars. Nonmetro Kansas: Kansas total less Metropolitan Areas as defined by the Office of Management and Budget (OMB; released 3/6/2020). Per 1000: For nonmoney amounts, Per 1000=(county value / county population for the same year as the data) x 1000. \$ Per capita=(county value / county population for the same year as the data). Value= . indicates missing or suppressed data or value not calculated.

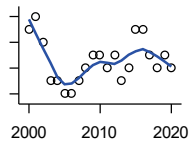
**Business**

**ESTABLISHMENTS: UTILITIES**



U.S. Census Bureau, County Business Patterns. Beginning with the 2017 data, any tabulation with fewer than 3 establishments were omitted from the release. Data for these establishments are included in the broader total.

Year	County	State of Kansas	Non Metro Kansas	County Rank	Per 1000 or \$ Per Capita
2000	0	274	192	105	0.0
2001	0	290	204	105	0.0
2002	0	278	195	105	0.0
2003	0	268	180	105	0.0
2004	0	247	164	105	0.0
2005	1	254	172	91	0.2
2006	1	248	169	92	0.2
2007	1	222	156	87	0.2
2008	1	244	166	87	0.2
2009	1	222	152	86	0.2
2010	1	197	129	82	0.2
2011	1	230	156	87	0.2
2012	1	232	156	86	0.2
2013	1	234	159	87	0.2
2014	1	232	160	89	0.2
2015	0	237	165	105	0.0
2016	0	245	171	105	0.0



**ESTABLISHMENTS: CONSTRUCTION**

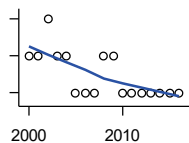
U.S. Census Bureau, County Business Patterns. Beginning with the 2017 data, any tabulation with fewer than 3 establishments were omitted from the release. Data for these establishments are included in the broader total.

Year	County	State of Kansas	Non Metro Kansas	County Rank	Per 1000 or \$ Per Capita
2000	11	7,703	2,616	79	2.3
2001	12	7,449	2,520	73	2.5
2002	10	7,519	2,482	77	2.2
2003	7	7,722	2,521	94	1.5
2004	7	7,887	2,518	93	1.6
2005	6	8,032	2,515	95	1.3
2006	6	8,031	2,494	94	1.4
2007	7	8,057	2,547	92	1.6
2008	8	7,831	2,522	85	1.8
2009	9	7,342	2,452	81	2.0
2010	9	7,064	2,394	82	2.0
2011	8	6,774	2,361	86	1.8
2012	9	6,741	2,393	85	2.1
2013	7	6,802	2,394	90	1.6
2014	8	6,920	2,383	87	1.9
2015	11	7,014	2,377	82	2.6
2016	11	6,988	2,343	81	2.6
2017	9	7,031	2,316	84	2.2
2018	8	7,124	2,285	87	1.9
2019	9	7,060	2,242	81	2.2
2020	8	7,089	2,249	85	2.0

County: county value. Kansas: state value. County Rank: highest county value ranked #1. (\$000): thousands of dollars. Nonmetro Kansas: Kansas total less Metropolitan Areas as defined by the Office of Management and Budget (OMB; released 3/6/2020). Per 1000: For nonmoney amounts, Per 1000=(county value / county population for the same year as the data) x 1000. \$ Per capita=(county value / county population for the same year as the data). Value= . indicates missing or suppressed data or value not calculated.

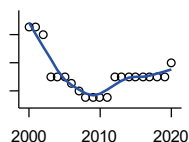
**Business**

**ESTABLISHMENTS:  
MANUFACTURING**



U.S. Census Bureau, County Business Patterns. Beginning with the 2017 data, any tabulation with fewer than 3 establishments were omitted from the release. Data for these establishments are included in the broader total.

Year	County	State of Kansas	Non Metro Kansas	County Rank	Per 1000 or \$ Per Capita
2000	3	3,229	1,316	92	0.6
2001	3	3,240	1,323	91	0.6
2002	4	3,181	1,289	87	0.9
2003	3	3,159	1,291	93	0.7
2004	3	3,179	1,313	93	0.7
2005	2	3,128	1,278	97	0.4
2006	2	3,165	1,290	98	0.5
2007	2	3,184	1,316	98	0.4
2008	3	3,171	1,297	95	0.7
2009	3	3,026	1,240	93	0.7
2010	2	2,955	1,222	97	0.5
2011	2	2,877	1,193	96	0.5
2012	2	2,889	1,197	96	0.5
2013	2	2,836	1,165	94	0.5
2014	2	2,831	1,168	93	0.5
2015	2	2,817	1,161	93	0.5
2016	2	2,791	1,150	94	0.5



**ESTABLISHMENTS: WHOLESALE  
TRADE**

U.S. Census Bureau, County Business Patterns. Beginning with the 2017 data, any tabulation with fewer than 3 establishments were omitted from the release. Data for these establishments are included in the broader total.

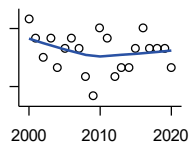
Year	County	State of Kansas	Non Metro Kansas	County Rank	Per 1000 or \$ Per Capita
2000	15	4,876	1,776	57	3.1
2001	15	4,811	1,769	56	3.2
2002	14	4,719	1,750	61	3.0
2003	8	4,590	1,637	87	1.8
2004	8	4,553	1,634	88	1.8
2005	8	4,541	1,618	84	1.8
2006	7	4,517	1,596	85	1.6
2007	6	4,555	1,629	94	1.3
2008	5	4,501	1,622	97	1.1
2009	5	4,437	1,614	97	1.1
2010	5	4,432	1,612	96	1.1
2011	5	4,400	1,660	97	1.1
2012	8	4,563	1,755	88	1.8
2013	8	4,501	1,741	87	1.8
2014	8	4,497	1,746	88	1.9
2015	8	4,459	1,755	89	1.9
2016	8	4,457	1,732	88	1.9
2017	8	4,436	1,774	87	1.9
2018	8	4,330	1,727	85	1.9
2019	8	4,291	1,713	85	1.9
2020	10	4,191	1,677	78	2.5

County: county value. Kansas: state value. County Rank: highest county value ranked #1. (\$000): thousands of dollars. Nonmetro Kansas: Kansas total less Metropolitan Areas as defined by the Office of Management and Budget (OMB; released 3/6/2020). Per 1000: For nonmoney amounts, Per 1000=(county value / county population for the same year as the data) x 1000. \$ Per capita=(county value / county population for the same year as the data). Value= . indicates missing or suppressed data or value not calculated.



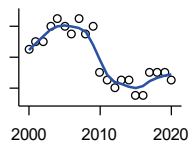
**Business**

**ESTABLISHMENTS: RETAIL TRADE**



U.S. Census Bureau, County Business Patterns. Beginning with the 2017 data, any tabulation with fewer than 3 establishments were omitted from the release. Data for these establishments are included in the broader total.

Year	County	State of Kansas	Non Metro Kansas	County Rank	Per 1000 or \$ Per Capita
2000	23	12,261	5,240	81	4.8
2001	21	12,206	5,207	87	4.4
2002	19	11,980	5,082	90	4.1
2003	21	11,834	5,049	83	4.6
2004	18	11,748	4,967	90	4.0
2005	20	11,562	4,834	85	4.5
2006	21	11,367	4,702	81	4.7
2007	20	11,306	4,653	82	4.5
2008	17	10,978	4,494	87	3.9
2009	15	10,760	4,372	91	3.4
2010	22	10,727	4,346	75	5.0
2011	21	10,655	4,289	76	4.8
2012	17	10,585	4,202	81	3.9
2013	18	10,433	4,147	79	4.1
2014	18	10,391	4,070	78	4.2
2015	20	10,327	4,061	75	4.7
2016	22	10,197	3,965	70	5.3
2017	20	10,074	3,885	74	4.8
2018	20	9,866	3,797	73	4.8
2019	20	9,762	3,750	72	4.8
2020	18	9,591	3,666	75	4.4



**ESTABLISHMENTS: TRANSPORTATION & WAREHOUSING**

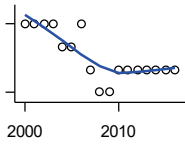
U.S. Census Bureau, County Business Patterns. Beginning with the 2017 data, any tabulation with fewer than 3 establishments were omitted from the release. Data for these establishments are included in the broader total.

Year	County	State of Kansas	Non Metro Kansas	County Rank	Per 1000 or \$ Per Capita
2000	13	2,474	1,293	53	2.7
2001	14	2,463	1,298	48	3.0
2002	14	2,461	1,278	45	3.0
2003	16	2,576	1,297	39	3.5
2004	17	2,651	1,324	36	3.8
2005	16	2,632	1,326	41	3.6
2006	15	2,626	1,295	44	3.4
2007	17	2,664	1,314	42	3.8
2008	15	2,675	1,329	43	3.4
2009	16	2,635	1,313	42	3.6
2010	10	2,615	1,313	64	2.3
2011	9	2,579	1,285	66	2.1
2012	8	2,519	1,243	70	1.8
2013	9	2,492	1,226	62	2.1
2014	9	2,518	1,240	63	2.1
2015	7	2,554	1,257	74	1.7
2016	7	2,567	1,241	71	1.7
2017	10	2,640	1,245	55	2.4
2018	10	2,627	1,238	58	2.4
2019	10	2,615	1,209	54	2.4
2020	9	2,589	1,179	58	2.2

County: county value. Kansas: state value. County Rank: highest county value ranked #1. (\$000): thousands of dollars. Nonmetro Kansas: Kansas total less Metropolitan Areas as defined by the Office of Management and Budget (OMB; released 3/6/2020). Per 1000: For nonmoney amounts, Per 1000=(county value / county population for the same year as the data) x 1000. \$ Per capita=(county value / county population for the same year as the data). Value= . indicates missing or suppressed data or value not calculated.

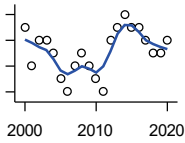
**Business**

**ESTABLISHMENTS: INFORMATION**



U.S. Census Bureau, County Business Patterns. Beginning with the 2017 data, any tabulation with fewer than 3 establishments were omitted from the release. Data for these establishments are included in the broader total.

Year	County	State of Kansas	Non Metro Kansas	County Rank	Per 1000 or \$ Per Capita
2000	3	1,542	578	85	0.6
2001	3	1,556	566	85	0.6
2002	3	1,517	551	80	0.6
2003	3	1,516	564	79	0.7
2004	2	1,518	556	92	0.4
2005	2	1,519	536	88	0.4
2006	3	1,549	559	78	0.7
2007	1	1,504	527	102	0.2
2008	0	1,468	522	105	0.0
2009	0	1,420	510	105	0.0
2010	1	1,437	527	102	0.2
2011	1	1,428	537	101	0.2
2012	1	1,387	515	102	0.2
2013	1	1,337	487	102	0.2
2014	1	1,335	496	103	0.2
2015	1	1,359	510	103	0.2
2016	1	1,431	537	103	0.2



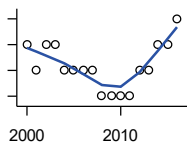
**ESTABLISHMENTS: FINANCE & INSURANCE**

U.S. Census Bureau, County Business Patterns. Beginning with the 2017 data, any tabulation with fewer than 3 establishments were omitted from the release. Data for these establishments are included in the broader total.

Year	County	State of Kansas	Non Metro Kansas	County Rank	Per 1000 or \$ Per Capita
2000	11	5,209	1,848	74	2.3
2001	8	5,178	1,828	84	1.7
2002	10	5,496	1,911	77	2.2
2003	10	5,569	1,907	79	2.2
2004	9	5,572	1,913	80	2.0
2005	7	5,708	1,964	94	1.6
2006	6	5,877	1,976	96	1.4
2007	8	6,017	2,030	89	1.8
2008	9	6,010	2,023	83	2.0
2009	8	5,933	1,994	89	1.8
2010	7	5,872	1,975	94	1.6
2011	6	5,854	1,985	99	1.4
2012	10	5,993	2,024	81	2.3
2013	11	5,903	1,993	75	2.5
2014	12	5,894	2,000	70	2.8
2015	11	5,932	1,998	74	2.6
2016	11	6,022	2,021	73	2.6
2017	10	6,026	2,007	77	2.4
2018	9	6,023	1,997	79	2.2
2019	9	5,953	1,977	79	2.2
2020	10	5,926	1,969	73	2.5

County: county value. Kansas: state value. County Rank: highest county value ranked #1. (\$000): thousands of dollars. Nonmetro Kansas: Kansas total less Metropolitan Areas as defined by the Office of Management and Budget (OMB; released 3/6/2020). Per 1000: For nonmoney amounts, Per 1000=(county value / county population for the same year as the data) x 1000. \$ Per capita=(county value / county population for the same year as the data). Value= . indicates missing or suppressed data or value not calculated.

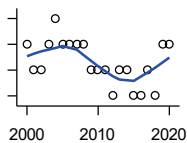
**Business**



**ESTABLISHMENTS: REAL ESTATE, RENTAL, AND LEASING**

U.S. Census Bureau, County Business Patterns. Beginning with the 2017 data, any tabulation with fewer than 3 establishments were omitted from the release. Data for these establishments are included in the broader total.

Year	County	State of Kansas	Non Metro Kansas	County Rank	Per 1000 or \$ Per Capita
2000	2	2,733	687	78	0.4
2001	1	2,849	724	92	0.2
2002	2	2,952	735	78	0.4
2003	2	3,007	727	71	0.4
2004	1	3,108	713	93	0.2
2005	1	3,203	727	90	0.2
2006	1	3,268	736	91	0.2
2007	1	3,286	721	91	0.2
2008	0	3,239	738	105	0.0
2009	0	3,122	723	105	0.0
2010	0	3,050	708	105	0.0
2011	0	3,002	692	105	0.0
2012	1	2,981	691	88	0.2
2013	1	3,046	717	87	0.2
2014	2	3,135	738	79	0.5
2015	2	3,179	744	79	0.5
2016	3	3,293	757	64	0.7



**ESTABLISHMENTS: PROFESSIONAL, SCIENTIFIC, AND TECHNICAL SERVICES**

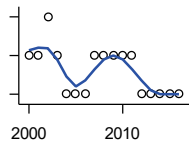
U.S. Census Bureau, County Business Patterns. Beginning with the 2017 data, any tabulation with fewer than 3 establishments were omitted from the release. Data for these establishments are included in the broader total.

Year	County	State of Kansas	Non Metro Kansas	County Rank	Per 1000 or \$ Per Capita
2000	9	6,424	1,690	69	1.9
2001	8	6,492	1,665	74	1.7
2002	8	6,719	1,704	76	1.7
2003	9	6,793	1,735	73	2.0
2004	10	7,025	1,730	67	2.2
2005	9	7,087	1,711	69	2.0
2006	9	7,231	1,736	69	2.0
2007	9	7,329	1,729	71	2.0
2008	9	7,133	1,671	70	2.0
2009	8	7,122	1,676	76	1.8
2010	8	7,172	1,680	76	1.8
2011	8	7,115	1,668	76	1.8
2012	7	7,122	1,681	82	1.6
2013	8	7,129	1,698	77	1.8
2014	8	7,206	1,682	79	1.9
2015	7	7,184	1,687	83	1.7
2016	7	7,146	1,659	81	1.7
2017	8	7,224	1,679	77	1.9
2018	7	7,138	1,655	81	1.7
2019	9	7,119	.	68	2.2
2020	9	7,117	.	69	2.2

County: county value. Kansas: state value. County Rank: highest county value ranked #1. (\$000): thousands of dollars. Nonmetro Kansas: Kansas total less Metropolitan Areas as defined by the Office of Management and Budget (OMB; released 3/6/2020). Per 1000: For nonmoney amounts, Per 1000=(county value / county population for the same year as the data) x 1000. \$ Per capita=(county value / county population for the same year as the data). Value= . indicates missing or suppressed data or value not calculated.

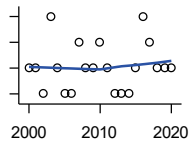
**Business**

**ESTABLISHMENTS: MANAGEMENT OF COMPANIES AND ENTERPRISES**



U.S. Census Bureau, County Business Patterns. Beginning with the 2017 data, any tabulation with fewer than 3 establishments were omitted from the release. Data for these establishments are included in the broader total.

Year	County	State of Kansas	Non Metro Kansas	County Rank	Per 1000 or \$ Per Capita
2000	1	622	145	68	0.2
2001	1	593	141	62	0.2
2002	2	597	152	41	0.4
2003	1	561	135	59	0.2
2004	0	569	133	105	0.0
2005	0	543	127	105	0.0
2006	0	542	131	105	0.0
2007	1	550	133	60	0.2
2008	1	553	139	60	0.2
2009	1	575	136	61	0.2
2010	1	567	131	61	0.2
2011	1	552	134	60	0.2
2012	0	593	135	105	0.0
2013	0	590	135	105	0.0
2014	0	603	136	105	0.0
2015	0	613	140	105	0.0
2016	0	655	171	105	0.0



**ESTABLISHMENTS: ADMIN, SUPPORT, WASTE MGMT., AND REMEDIATION**

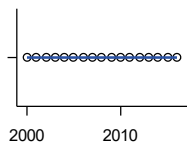
U.S. Census Bureau, County Business Patterns. Beginning with the 2017 data, any tabulation with fewer than 3 establishments were omitted from the release. Data for these establishments are included in the broader total.

Year	County	State of Kansas	Non Metro Kansas	County Rank	Per 1000 or \$ Per Capita
2000	5	3,307	871	65	1.0
2001	5	3,421	913	64	1.1
2002	4	3,232	882	74	0.9
2003	7	3,189	858	50	1.5
2004	5	3,301	891	64	1.1
2005	4	3,342	896	73	0.9
2006	4	3,395	886	74	0.9
2007	6	3,522	921	58	1.3
2008	5	3,587	932	64	1.1
2009	5	3,505	904	67	1.1
2010	6	3,494	897	59	1.4
2011	5	3,447	903	69	1.1
2012	4	3,462	891	74	0.9
2013	4	3,489	904	77	0.9
2014	4	3,569	933	75	0.9
2015	5	3,630	964	66	1.2
2016	7	3,705	987	51	1.7
2017	6	3,741	991	64	1.4
2018	5	3,740	983	67	1.2
2019	5	3,762	991	66	1.2
2020	5	3,807	989	67	1.2

County: county value. Kansas: state value. County Rank: highest county value ranked #1. (\$000): thousands of dollars. Nonmetro Kansas: Kansas total less Metropolitan Areas as defined by the Office of Management and Budget (OMB; released 3/6/2020). Per 1000: For nonmoney amounts, Per 1000=(county value / county population for the same year as the data) x 1000. \$ Per capita=(county value / county population for the same year as the data). Value= . indicates missing or suppressed data or value not calculated.

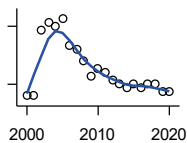
**Business**

**ESTABLISHMENTS: EDUCATIONAL SERVICES**



U.S. Census Bureau, County Business Patterns. Beginning with the 2017 data, any tabulation with fewer than 3 establishments were omitted from the release. Data for these establishments are included in the broader total.

Year	County	State of Kansas	Non Metro Kansas	County Rank	Per 1000 or \$ Per Capita
2000	0	604	155	105	0.0
2001	0	625	168	105	0.0
2002	0	666	165	105	0.0
2003	0	663	173	105	0.0
2004	0	690	173	105	0.0
2005	0	699	168	105	0.0
2006	0	698	175	105	0.0
2007	0	691	165	105	0.0
2008	0	692	158	105	0.0
2009	0	690	150	105	0.0
2010	0	700	149	105	0.0
2011	0	711	150	105	0.0
2012	0	724	145	105	0.0
2013	0	735	153	105	0.0
2014	0	722	152	105	0.0
2015	0	754	152	105	0.0
2016	0	728	150	105	0.0



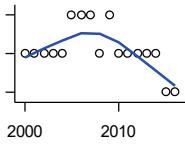
**ESTABLISHMENTS: HEALTH CARE AND SOCIAL ASSISTANCE**

U.S. Census Bureau, County Business Patterns. Beginning with the 2017 data, any tabulation with fewer than 3 establishments were omitted from the release. Data for these establishments are included in the broader total.

Year	County	State of Kansas	Non Metro Kansas	County Rank	Per 1000 or \$ Per Capita
2000	12	6,564	2,591	67	2.5
2001	12	6,636	2,590	67	2.5
2002	29	7,052	2,777	43	6.2
2003	31	7,129	2,792	38	6.8
2004	30	7,239	2,813	43	6.7
2005	32	7,412	2,855	39	7.2
2006	25	7,477	2,860	50	5.6
2007	24	7,661	2,864	53	5.4
2008	21	7,651	2,810	55	4.8
2009	17	7,696	2,787	56	3.8
2010	19	7,751	2,830	57	4.3
2011	18	7,804	2,817	58	4.1
2012	16	7,973	2,793	59	3.7
2013	15	7,877	2,729	62	3.5
2014	14	7,809	2,686	62	3.3
2015	15	8,103	2,692	61	3.6
2016	14	8,315	2,678	65	3.3
2017	15	8,136	2,646	64	3.6
2018	15	8,126	2,632	64	3.6
2019	13	8,184	2,587	68	3.1
2020	13	8,290	2,571	68	3.2

County: county value. Kansas: state value. County Rank: highest county value ranked #1. (\$000): thousands of dollars. Nonmetro Kansas: Kansas total less Metropolitan Areas as defined by the Office of Management and Budget (OMB; released 3/6/2020). Per 1000: For nonmoney amounts, Per 1000=(county value / county population for the same year as the data) x 1000. \$ Per capita=(county value / county population for the same year as the data). Value= . indicates missing or suppressed data or value not calculated.

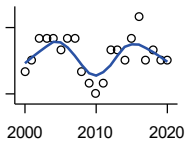
**Business**



**ESTABLISHMENTS: ARTS, ENTERTAINMENT, AND RECREATION**

U.S. Census Bureau, County Business Patterns. Beginning with the 2017 data, any tabulation with fewer than 3 establishments were omitted from the release. Data for these establishments are included in the broader total.

Year	County	State of Kansas	Non Metro Kansas	County Rank	Per 1000 or \$ Per Capita
2000	2	981	419	84	0.4
2001	2	1,009	433	87	0.4
2002	2	1,054	441	89	0.4
2003	2	1,045	443	89	0.4
2004	2	1,082	445	85	0.4
2005	3	1,109	446	71	0.7
2006	3	1,080	445	72	0.7
2007	3	1,092	444	71	0.7
2008	2	1,062	423	83	0.5
2009	3	1,063	421	67	0.7
2010	2	1,018	406	87	0.5
2011	2	997	387	89	0.5
2012	2	1,000	388	86	0.5
2013	2	1,009	377	84	0.5
2014	2	1,030	365	83	0.5
2015	1	1,031	357	101	0.2
2016	1	1,060	366	101	0.2



**ESTABLISHMENTS: ACCOMMODATION AND FOOD SERVICES**

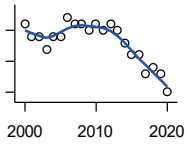
U.S. Census Bureau, County Business Patterns. Beginning with the 2017 data, any tabulation with fewer than 3 establishments were omitted from the release. Data for these establishments are included in the broader total.

Year	County	State of Kansas	Non Metro Kansas	County Rank	Per 1000 or \$ Per Capita
2000	8	5,536	2,213	90	1.7
2001	9	5,551	2,173	86	1.9
2002	11	5,610	2,174	71	2.4
2003	11	5,635	2,188	73	2.4
2004	11	5,681	2,160	71	2.5
2005	10	5,776	2,170	77	2.2
2006	11	5,745	2,132	70	2.5
2007	11	5,877	2,095	69	2.5
2008	8	5,843	2,052	83	1.8
2009	7	5,794	2,029	82	1.6
2010	6	5,898	2,046	92	1.4
2011	7	5,958	2,067	86	1.6
2012	10	5,951	2,046	71	2.3
2013	10	6,061	2,070	71	2.3
2014	9	5,985	2,024	74	2.1
2015	11	6,034	2,063	67	2.6
2016	13	6,126	2,094	65	3.1
2017	9	6,250	2,123	77	2.2
2018	10	6,256	2,128	75	2.4
2019	9	6,231	2,131	75	2.2
2020	9	6,206	2,131	77	2.2

County: county value. Kansas: state value. County Rank: highest county value ranked #1. (\$000): thousands of dollars. Nonmetro Kansas: Kansas total less Metropolitan Areas as defined by the Office of Management and Budget (OMB; released 3/6/2020). Per 1000: For nonmoney amounts, Per 1000=(county value / county population for the same year as the data) x 1000. \$ Per capita=(county value / county population for the same year as the data). Value= . indicates missing or suppressed data or value not calculated.

**Business**

**ESTABLISHMENTS: OTHER SERVICES**

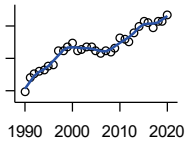


U.S. Census Bureau, County Business Patterns. Beginning with the 2017 data, any tabulation with fewer than 3 establishments were omitted from the release. Data for these establishments are included in the broader total.

Year	County	State of Kansas	Non Metro Kansas	County Rank	Per 1000 or \$ Per Capita
2000	26	8,423	3,636	63	5.4
2001	24	8,310	3,614	68	5.1
2002	24	8,552	3,658	70	5.2
2003	22	8,411	3,605	72	4.8
2004	24	8,343	3,597	65	5.4
2005	24	8,321	3,571	64	5.4
2006	27	8,225	3,490	58	6.1
2007	26	8,355	3,534	61	5.8
2008	26	8,104	3,406	57	5.9
2009	25	8,040	3,405	59	5.7
2010	26	7,998	3,379	57	5.9
2011	25	7,883	3,294	59	5.7
2012	26	7,913	3,303	59	6.0
2013	25	7,947	3,290	62	5.8
2014	23	7,943	3,285	67	5.4
2015	21	7,869	3,255	67	5.0
2016	21	7,839	3,204	70	5.0
2017	18	7,873	3,189	80	4.3
2018	19	7,853	3,176	75	4.6
2019	18	7,834	3,138	78	4.3
2020	15	7,787	3,073	85	3.7

County: county value. Kansas: state value. County Rank: highest county value ranked #1. (\$000): thousands of dollars. Nonmetro Kansas: Kansas total less Metropolitan Areas as defined by the Office of Management and Budget (OMB; released 3/6/2020). Per 1000: For nonmoney amounts, Per 1000=(county value / county population for the same year as the data) x 1000. \$ Per capita=(county value / county population for the same year as the data). Value= . indicates missing or suppressed data or value not calculated.

**Business**



**TOTAL ANNUAL PAYROLL (\$000)  
COUNTY BUSINESS PATTERNS**

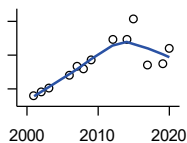
U.S. Census Bureau, County Business Patterns. Beginning with the 2017 data, any tabulation with fewer than 3 establishments were omitted from the release. Data for these establishments are included in the broader total.

Year	County	State of Kansas	Non Metro Kansas	County Rank	Per 1000 or \$ Per Capita
1990	9,772	17,487,316	4,442,429	78	1,821.4
1991	11,968	18,162,326	4,612,616	74	2,310.0
1992	12,541	19,244,346	4,882,060	75	2,460.9
1993	12,996	20,087,190	5,182,780	76	2,523.0
1994	13,266	21,201,652	5,541,423	77	2,562.0
1995	13,727	22,825,920	5,875,310	77	2,684.2
1996	13,989	24,613,884	6,198,398	79	2,768.5
1997	16,197	26,787,098	6,599,061	75	3,257.6
1998	16,158	28,747,576	6,871,794	78	3,279.5
1999	16,772	30,600,434	7,121,961	77	3,447.5
2000	17,410	31,990,762	7,520,424	77	3,635.4
2001	16,205	33,303,992	7,598,165	79	3,431.1
2002	16,342	33,152,962	7,572,002	79	3,517.4
2003	16,835	34,040,944	7,726,561	79	3,692.7
2004	16,773	35,725,812	8,303,779	80	3,754.0
2005	16,169	36,646,064	8,586,986	82	3,614.8
2006	15,851	39,251,388	9,178,947	84	3,570.0
2007	16,218	42,022,753	.	85	3,636.3
2008	15,971	43,984,689	.	86	3,626.5
2009	16,510	42,146,866	.	86	3,733.6
2010	18,129	42,686,303	10,294,015	86	4,085.9
2011	17,924	43,733,944	.	86	4,092.2
2012	17,601	45,608,072	11,222,183	88	4,046.2
2013	18,957	47,715,601	11,446,751	88	4,369.0
2014	20,023	49,712,832	11,957,931	88	4,677.2
2015	20,791	51,259,676	11,975,718	88	4,932.6
2016	20,590	51,016,318	12,148,646	88	4,918.8
2017	19,681	52,754,605	12,448,592	87	4,701.6
2018	20,652	55,087,460	12,810,270	87	4,962.0
2019	20,768	57,272,387	13,123,288	88	4,997.1
2020	21,723	58,374,388	14,007,955	88	5,334.7

County: county value. Kansas: state value. County Rank: highest county value ranked #1. (\$000): thousands of dollars. Nonmetro Kansas: Kansas total less Metropolitan Areas as defined by the Office of Management and Budget (OMB; released 3/6/2020). Per 1000: For nonmoney amounts, Per 1000=(county value / county population for the same year as the data) x 1000. \$ Per capita=(county value / county population for the same year as the data). Value= . indicates missing or suppressed data or value not calculated.



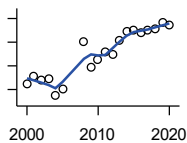
**Business**



**TOTAL ANNUAL PAYROLL(\$000):  
FORESTRY, FISHING, HUNTING, AND  
AG SUPPORT**

U.S. Census Bureau, County Business Patterns. Beginning with the 2017 data, any tabulation with fewer than 3 establishments were omitted from the release. Data for these establishments are included in the broader total.

Year	County	State of Kansas	Non Metro Kansas	County Rank	Per 1000 or \$ Per Capita
2000	.	13,551	.	.	.
2001	125	.	.	.	26.5
2002	163	16,528	.	.	35.1
2003	208	17,247	.	.	45.6
2004	.	17,552	.	.	.
2005	.	16,298	.	.	.
2006	368	17,908	.	.	82.9
2007	465	22,199	.	.	104.3
2008	440	21,359	.	.	99.9
2009	538	22,466	.	.	121.7
2010	.	22,753	.	.	.
2011	.	23,320	.	.	.
2012	787	27,492	.	.	180.9
2013	.	30,360	.	.	.
2014	791	34,862	.	.	184.8
2015	1,030	35,980	.	.	244.4
2017	486	34,117	.	.	116.1
2019	499	39,558	.	.	120.1
2020	685	44,008	.	.	168.2



**TOTAL ANNUAL PAYROLL(\$000):  
MINING**

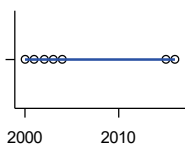
U.S. Census Bureau, County Business Patterns. Beginning with the 2017 data, any tabulation with fewer than 3 establishments were omitted from the release. Data for these establishments are included in the broader total.

Year	County	State of Kansas	Non Metro Kansas	County Rank	Per 1000 or \$ Per Capita
2000	648	240,079	.	.	135.3
2001	713	273,838	.	.	151.0
2002	675	262,277	.	.	145.3
2003	692	290,652	.	.	151.8
2004	546	326,997	.	.	122.2
2005	604	381,069	.	.	135.0
2006	.	482,102	.	.	.
2007	.	551,751	.	.	.
2008	1,006	620,446	.	.	228.4
2009	785	465,070	.	.	177.5
2010	852	485,841	.	.	192.0
2011	917	541,536	.	.	209.4
2012	897	600,402	.	.	206.2
2013	1,016	599,788	.	.	234.2
2014	1,094	678,673	.	.	255.5
2015	1,100	552,658	.	.	261.0
2016	1,080	428,767	.	.	258.0
2017	1,105	379,883	.	.	264.0
2018	1,118	431,367	.	.	268.6
2019	1,167	349,270	.	.	280.8
2020	1,144	302,795	.	.	280.9

County: county value. Kansas: state value. County Rank: highest county value ranked #1. (\$000): thousands of dollars. Nonmetro Kansas: Kansas total less Metropolitan Areas as defined by the Office of Management and Budget (OMB; released 3/6/2020). Per 1000: For nonmoney amounts, Per 1000=(county value / county population for the same year as the data) x 1000. \$ Per capita=(county value / county population for the same year as the data). Value= . indicates missing or suppressed data or value not calculated.

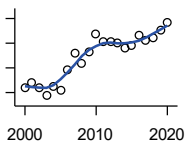
**Business**

**TOTAL ANNUAL PAYROLL(\$000):  
UTILITIES**



U.S. Census Bureau, County Business Patterns. Beginning with the 2017 data, any tabulation with fewer than 3 establishments were omitted from the release. Data for these establishments are included in the broader total.

Year	County	State of Kansas	Non Metro Kansas	County Rank	Per 1000 or \$ Per Capita
2000	0	410,313	.	.	0.0
2001	0	452,057	.	.	0.0
2002	0	377,559	.	.	0.0
2003	0	378,157	.	.	0.0
2004	0	377,809	.	.	0.0
2005	.	429,864	.	.	.
2006	.	443,999	.	.	.
2007	.	480,068	.	.	.
2008	.	541,066	.	.	.
2009	.	563,373	.	.	.
2010	.	512,628	.	.	.
2011	.	653,229	.	.	.
2012	.	625,451	.	.	.
2013	.	625,347	.	.	.
2014	.	610,960	.	.	.
2015	0	668,559	.	.	0.0
2016	0	700,926	.	.	0.0



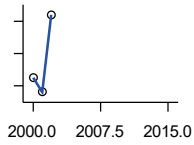
**TOTAL ANNUAL PAYROLL(\$000):  
CONSTRUCTION**

U.S. Census Bureau, County Business Patterns. Beginning with the 2017 data, any tabulation with fewer than 3 establishments were omitted from the release. Data for these establishments are included in the broader total.

Year	County	State of Kansas	Non Metro Kansas	County Rank	Per 1000 or \$ Per Capita
2000	441	2,256,057	.	.	92.1
2001	480	2,320,652	.	.	101.6
2002	441	2,302,229	.	.	94.9
2003	373	2,282,021	.	.	81.8
2004	453	2,302,854	.	.	101.4
2005	422	2,465,977	.	.	94.3
2006	588	2,700,351	.	.	132.4
2007	715	2,772,168	.	.	160.3
2008	637	2,950,073	.	.	144.6
2009	725	2,709,864	.	.	164.0
2010	872	2,553,555	.	.	196.5
2011	811	2,550,355	.	.	185.2
2012	811	2,733,284	.	.	186.4
2013	797	2,866,801	.	.	183.7
2014	765	3,135,814	.	.	178.7
2015	779	3,270,952	.	.	184.8
2016	866	3,328,610	.	.	206.9
2017	818	3,568,505	.	.	195.4
2018	847	3,806,196	.	.	203.5
2019	910	3,879,912	.	.	219.0
2020	963	3,983,029	.	.	236.5

County: county value. Kansas: state value. County Rank: highest county value ranked #1. (\$000): thousands of dollars. Nonmetro Kansas: Kansas total less Metropolitan Areas as defined by the Office of Management and Budget (OMB; released 3/6/2020). Per 1000: For nonmoney amounts, Per 1000=(county value / county population for the same year as the data) x 1000. \$ Per capita=(county value / county population for the same year as the data). Value= . indicates missing or suppressed data or value not calculated.

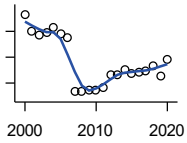
**Business**



**TOTAL ANNUAL PAYROLL(\$000):  
MANUFACTURING**

U.S. Census Bureau, County Business Patterns. Beginning with the 2017 data, any tabulation with fewer than 3 establishments were omitted from the release. Data for these establishments are included in the broader total.

Year	County	State of Kansas	Non Metro Kansas	County Rank	Per 1000 or \$ Per Capita
2000	1,370	7,015,414	.	.	286.1
2001	1,352	7,301,706	.	.	286.3
2002	1,448	6,802,605	.	.	311.7
2003	.	6,691,611	.	.	.
2004	.	6,985,656	.	.	.
2005	.	7,221,614	.	.	.
2006	.	7,621,873	.	.	.
2007	.	7,873,359	.	.	.
2008	.	8,441,541	.	.	.
2009	.	7,477,838	.	.	.
2010	.	7,556,955	.	.	.
2011	.	7,747,934	.	.	.
2012	.	7,704,851	.	.	.
2013	.	8,365,542	.	.	.
2014	.	8,787,306	.	.	.
2015	.	9,052,105	.	.	.



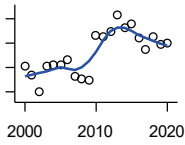
**TOTAL ANNUAL PAYROLL(\$000):  
WHOLESALE TRADE**

U.S. Census Bureau, County Business Patterns. Beginning with the 2017 data, any tabulation with fewer than 3 establishments were omitted from the release. Data for these establishments are included in the broader total.

Year	County	State of Kansas	Non Metro Kansas	County Rank	Per 1000 or \$ Per Capita
2000	3,651	2,332,755	.	.	762.4
2001	3,000	2,283,169	.	.	635.2
2002	2,846	2,107,653	.	.	612.6
2003	2,935	2,622,701	.	.	643.8
2004	3,152	2,663,196	.	.	705.5
2005	2,904	2,345,990	.	.	649.2
2006	2,766	2,592,211	.	.	623.0
2007	658	2,682,542	.	.	147.5
2008	680	3,078,655	.	.	154.4
2009	724	2,940,949	.	.	163.7
2010	706	3,097,628	.	.	159.1
2011	803	3,305,811	.	.	183.3
2012	1,302	3,339,997	.	.	299.3
2013	1,323	3,460,512	.	.	304.9
2014	1,511	3,712,075	.	.	353.0
2015	1,374	3,760,189	.	.	326.0
2016	1,438	3,738,207	.	.	343.5
2017	1,470	3,822,730	.	.	351.2
2018	1,684	3,814,353	.	.	404.6
2019	1,292	4,025,802	.	.	310.9
2020	1,932	4,224,666	.	.	474.5

County: county value. Kansas: state value. County Rank: highest county value ranked #1. (\$000): thousands of dollars. Nonmetro Kansas: Kansas total less Metropolitan Areas as defined by the Office of Management and Budget (OMB; released 3/6/2020). Per 1000: For nonmoney amounts, Per 1000=(county value / county population for the same year as the data) x 1000. \$ Per capita=(county value / county population for the same year as the data). Value= . indicates missing or suppressed data or value not calculated.

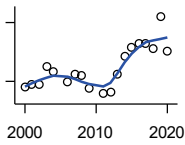
**Business**



**TOTAL ANNUAL PAYROLL(\$000):  
RETAIL TRADE**

U.S. Census Bureau, County Business Patterns. Beginning with the 2017 data, any tabulation with fewer than 3 establishments were omitted from the release. Data for these establishments are included in the broader total.

Year	County	State of Kansas	Non Metro Kansas	County Rank	Per 1000 or \$ Per Capita
2000	1,516	2,747,001	.	.	316.6
2001	1,331	2,813,226	.	.	281.8
2002	992	2,854,231	.	.	213.5
2003	1,530	2,773,674	.	.	335.6
2004	1,558	2,847,826	.	.	348.7
2005	1,558	2,952,196	.	.	348.3
2006	1,653	3,126,495	.	.	372.3
2007	1,324	3,201,169	.	.	296.9
2008	1,274	3,261,054	.	.	289.3
2009	1,239	3,232,246	.	.	280.2
2010	2,153	3,321,838	.	.	485.2
2011	2,121	3,384,607	.	.	484.2
2012	2,226	3,409,755	.	.	511.7
2013	2,581	3,483,752	.	.	594.8
2014	2,309	3,617,933	.	.	539.4
2015	2,387	3,712,165	.	.	566.3
2016	2,112	3,826,889	.	.	504.5
2017	1,858	3,797,849	.	.	443.9
2018	2,141	3,818,988	.	.	514.4
2019	1,983	3,908,994	.	.	477.1
2020	1,994	3,984,443	.	.	489.7



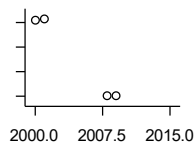
**TOTAL ANNUAL PAYROLL(\$000):  
TRANSPORTATION &  
WAREHOUSING**

U.S. Census Bureau, County Business Patterns. Beginning with the 2017 data, any tabulation with fewer than 3 establishments were omitted from the release. Data for these establishments are included in the broader total.

Year	County	State of Kansas	Non Metro Kansas	County Rank	Per 1000 or \$ Per Capita
2000	847	1,044,835	.	.	176.9
2001	921	1,089,405	.	.	195.0
2002	905	1,094,636	.	.	194.8
2003	1,371	1,316,655	.	.	300.7
2004	1,235	1,439,800	.	.	276.4
2005	.	1,393,651	.	.	.
2006	978	1,528,551	.	.	220.3
2007	1,168	1,788,267	.	.	261.9
2008	1,144	1,722,697	.	.	259.8
2009	816	1,618,598	.	.	184.5
2010	.	1,735,761	.	.	.
2011	680	1,739,165	.	.	155.3
2012	738	1,984,976	.	.	169.7
2013	1,187	2,006,261	.	.	273.6
2014	1,649	2,097,377	.	.	385.2
2015	1,868	2,190,072	.	.	443.2
2016	1,969	2,202,859	.	.	470.4
2017	1,951	2,546,061	.	.	466.1
2018	1,837	2,663,188	.	.	441.4
2019	2,654	2,879,406	.	.	638.6
2020	1,785	2,962,461	.	.	438.4

County: county value. Kansas: state value. County Rank: highest county value ranked #1. (\$000): thousands of dollars. Nonmetro Kansas: Kansas total less Metropolitan Areas as defined by the Office of Management and Budget (OMB; released 3/6/2020). Per 1000: For nonmoney amounts, Per 1000=(county value / county population for the same year as the data) x 1000. \$ Per capita=(county value / county population for the same year as the data). Value= . indicates missing or suppressed data or value not calculated.

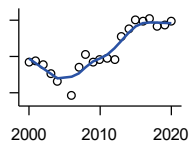
**Business**



**TOTAL ANNUAL PAYROLL(\$000):  
INFORMATION**

U.S. Census Bureau, County Business Patterns. Beginning with the 2017 data, any tabulation with fewer than 3 establishments were omitted from the release. Data for these establishments are included in the broader total.

Year	County	State of Kansas	Non Metro Kansas	County Rank	Per 1000 or \$ Per Capita
2000	62	1,923,381	.	.	12.9
2001	63	2,218,610	.	.	13.3
2002	.	2,298,108	.	.	.
2003	.	2,378,673	.	.	.
2004	.	2,392,990	.	.	.
2005	.	2,395,081	.	.	.
2006	.	2,586,483	.	.	.
2007	.	2,594,138	.	.	.
2008	0	3,043,244	.	.	0.0
2009	0	3,045,570	.	.	0.0
2010	.	2,481,580	.	.	.
2011	.	2,513,805	.	.	.
2012	.	2,535,555	.	.	.
2013	.	2,805,017	.	.	.
2014	.	2,393,609	.	.	.
2015	.	2,406,323	.	.	.



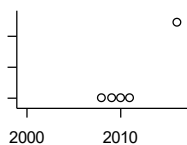
**TOTAL ANNUAL PAYROLL(\$000):  
FINANCE & INSURANCE**

U.S. Census Bureau, County Business Patterns. Beginning with the 2017 data, any tabulation with fewer than 3 establishments were omitted from the release. Data for these establishments are included in the broader total.

Year	County	State of Kansas	Non Metro Kansas	County Rank	Per 1000 or \$ Per Capita
2000	1,845	2,083,565	.	.	385.3
2001	1,863	2,129,587	.	.	394.5
2002	1,783	2,414,120	.	.	383.8
2003	1,531	2,608,579	.	.	335.8
2004	1,317	2,676,910	.	.	294.8
2005	.	2,786,136	.	.	.
2006	914	2,928,931	.	.	205.9
2007	1,711	3,096,017	.	.	383.6
2008	2,040	3,322,977	.	.	463.2
2009	1,830	3,206,839	.	.	413.8
2010	1,931	3,211,300	.	.	435.2
2011	1,967	3,404,633	.	.	449.1
2012	1,923	3,611,165	.	.	442.1
2013	2,548	3,896,051	.	.	587.2
2014	2,767	4,044,315	.	.	646.3
2015	2,998	4,113,060	.	.	711.3
2016	2,958	4,180,740	.	.	706.6
2017	3,046	4,258,057	.	.	727.7
2018	2,833	4,682,552	.	.	680.7
2019	2,871	4,814,201	.	.	690.8
2020	2,981	5,288,529	.	.	732.1

County: county value. Kansas: state value. County Rank: highest county value ranked #1. (\$000): thousands of dollars. Nonmetro Kansas: Kansas total less Metropolitan Areas as defined by the Office of Management and Budget (OMB; released 3/6/2020). Per 1000: For nonmoney amounts, Per 1000=(county value / county population for the same year as the data) x 1000. \$ Per capita=(county value / county population for the same year as the data). Value= . indicates missing or suppressed data or value not calculated.

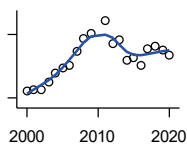
**Business**



**TOTAL ANNUAL PAYROLL(\$000):  
REAL ESTATE, RENTAL, AND  
LEASING**

U.S. Census Bureau, County Business Patterns. Beginning with the 2017 data, any tabulation with fewer than 3 establishments were omitted from the release. Data for these establishments are included in the broader total.

Year	County	State of Kansas	Non Metro Kansas	County Rank	Per 1000 or \$ Per Capita
2000	.	360,637	.	.	.
2001	.	397,371	.	.	.
2002	.	403,695	.	.	.
2003	.	437,786	.	.	.
2004	.	430,719	.	.	.
2005	.	465,149	.	.	.
2006	.	478,811	.	.	.
2007	.	452,969	.	.	.
2008	0	484,149	.	.	0.0
2009	0	450,884	.	.	0.0
2010	0	487,255	.	.	0.0
2011	0	535,120	.	.	0.0
2012	.	531,039	.	.	.
2013	.	538,796	.	.	.
2014	.	542,307	.	.	.
2015	.	595,030	.	.	.
2016	99	607,668	.	.	23.7



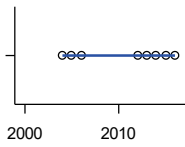
**TOTAL ANNUAL PAYROLL(\$000):  
PROFESSIONAL, SCIENTIFIC, AND  
TECHNICAL SERVICES**

U.S. Census Bureau, County Business Patterns. Beginning with the 2017 data, any tabulation with fewer than 3 establishments were omitted from the release. Data for these establishments are included in the broader total.

Year	County	State of Kansas	Non Metro Kansas	County Rank	Per 1000 or \$ Per Capita
2000	269	2,057,313	.	.	56.2
2001	280	2,152,937	.	.	59.3
2002	279	2,150,085	.	.	60.1
2003	347	2,052,712	.	.	76.1
2004	433	2,531,457	.	.	96.9
2005	489	2,418,500	.	.	109.3
2006	512	2,655,690	.	.	115.3
2007	644	2,901,544	.	.	144.4
2008	758	2,903,802	.	.	172.1
2009	810	3,071,611	.	.	183.2
2010	.	3,037,182	.	.	.
2011	932	3,132,082	.	.	212.8
2012	710	3,455,548	.	.	163.2
2013	749	3,777,729	.	.	172.6
2014	561	3,981,580	.	.	131.0
2015	575	4,039,074	.	.	136.4
2016	511	4,125,507	.	.	122.1
2017	665	4,158,858	.	.	158.9
2018	683	4,314,317	.	.	164.1
2019	652	4,646,644	.	.	156.9
2020	606	4,927,611	.	.	148.8

County: county value. Kansas: state value. County Rank: highest county value ranked #1. (\$000): thousands of dollars. Nonmetro Kansas: Kansas total less Metropolitan Areas as defined by the Office of Management and Budget (OMB; released 3/6/2020). Per 1000: For nonmoney amounts, Per 1000=(county value / county population for the same year as the data) x 1000. \$ Per capita=(county value / county population for the same year as the data). Value= . indicates missing or suppressed data or value not calculated.

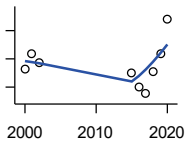
**Business**



**TOTAL ANNUAL PAYROLL(\$000):  
MANAGEMENT OF COMPANIES AND  
ENTERPRISES**

U.S. Census Bureau, County Business Patterns. Beginning with the 2017 data, any tabulation with fewer than 3 establishments were omitted from the release. Data for these establishments are included in the broader total.

Year	County	State of Kansas	Non Metro Kansas	County Rank	Per 1000 or \$ Per Capita
2000	.	1,362,735	.	.	.
2001	.	1,279,253	.	.	.
2002	.	1,311,368	.	.	.
2003	.	1,352,119	.	.	.
2004	0	1,378,891	.	.	0.0
2005	0	1,510,876	.	.	0.0
2006	0	1,626,320	.	.	0.0
2007	.	2,233,654	.	.	.
2008	.	1,848,656	.	.	.
2009	.	1,601,158	.	.	.
2010	.	2,003,048	.	.	.
2011	.	1,677,619	.	.	.
2012	0	1,834,430	.	.	0.0
2013	0	1,938,100	.	.	0.0
2014	0	2,117,232	.	.	0.0
2015	0	2,451,126	.	.	0.0
2016	0	2,167,620	.	.	0.0



**TOTAL ANNUAL PAYROLL(\$000):  
ADMIN, SUPPORT, WASTE MGMT.,  
AND REMEDIATION**

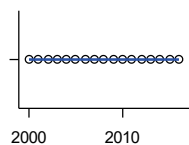
U.S. Census Bureau, County Business Patterns. Beginning with the 2017 data, any tabulation with fewer than 3 establishments were omitted from the release. Data for these establishments are included in the broader total.

Year	County	State of Kansas	Non Metro Kansas	County Rank	Per 1000 or \$ Per Capita
2000	562	1,388,712	.	.	117.4
2001	618	1,416,480	.	.	130.8
2002	587	1,378,905	.	.	126.3
2003	.	1,387,061	.	.	.
2004	.	1,544,442	.	.	.
2005	.	1,694,687	.	.	.
2006	.	1,800,846	.	.	.
2007	.	1,978,025	.	.	.
2008	.	2,096,864	.	.	.
2009	.	1,832,540	.	.	.
2010	.	2,117,325	.	.	.
2011	.	2,114,970	.	.	.
2012	.	2,230,250	.	.	.
2013	.	2,214,320	.	.	.
2014	.	2,444,170	.	.	.
2015	552	2,577,592	.	.	131.0
2016	500	2,760,706	.	.	119.4
2017	476	3,026,927	.	.	113.7
2018	555	3,007,347	.	.	133.3
2019	620	3,075,485	.	.	149.2
2020	742	3,250,046	.	.	182.2

County: county value. Kansas: state value. County Rank: highest county value ranked #1. (\$000): thousands of dollars. Nonmetro Kansas: Kansas total less Metropolitan Areas as defined by the Office of Management and Budget (OMB; released 3/6/2020). Per 1000: For nonmoney amounts, Per 1000=(county value / county population for the same year as the data) x 1000. \$ Per capita=(county value / county population for the same year as the data). Value= . indicates missing or suppressed data or value not calculated.

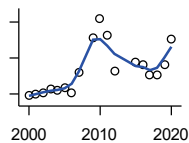
**Business**

**TOTAL ANNUAL PAYROLL(\$000):  
EDUCATIONAL SERVICES**



U.S. Census Bureau, County Business Patterns. Beginning with the 2017 data, any tabulation with fewer than 3 establishments were omitted from the release. Data for these establishments are included in the broader total.

Year	County	State of Kansas	Non Metro Kansas	County Rank	Per 1000 or \$ Per Capita
2000	0	299,843	.	.	0.0
2001	0	320,606	.	.	0.0
2002	0	353,531	.	.	0.0
2003	0	350,814	.	.	0.0
2004	0	361,644	.	.	0.0
2005	0	375,781	.	.	0.0
2006	0	400,565	.	.	0.0
2007	0	414,233	.	.	0.0
2008	0	463,210	.	.	0.0
2009	0	468,856	.	.	0.0
2010	0	487,670	.	.	0.0
2011	0	504,964	.	.	0.0
2012	0	508,448	.	.	0.0
2013	0	553,995	.	.	0.0
2014	0	612,073	.	.	0.0
2015	0	579,794	.	.	0.0
2016	0	571,582	.	.	0.0



**TOTAL ANNUAL PAYROLL(\$000):  
HEALTH CARE AND SOCIAL ASSISTANCE**

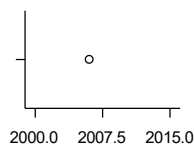
U.S. Census Bureau, County Business Patterns. Beginning with the 2017 data, any tabulation with fewer than 3 establishments were omitted from the release. Data for these establishments are included in the broader total.

Year	County	State of Kansas	Non Metro Kansas	County Rank	Per 1000 or \$ Per Capita
2000	4,457	4,120,595	.	.	930.7
2001	4,486	4,445,027	.	.	949.8
2002	4,524	4,705,220	.	.	973.7
2003	4,651	4,939,323	.	.	1,020.2
2004	4,589	5,232,394	.	.	1,027.1
2005	4,658	5,487,089	.	.	1,041.4
2006	4,548	5,814,218	.	.	1,024.3
2007	5,116	6,186,471	.	.	1,147.1
2008	.	6,490,627	.	.	.
2009	6,052	6,749,962	.	.	1,368.6
2010	6,598	6,871,727	.	.	1,487.0
2011	6,123	7,129,655	.	.	1,397.9
2012	5,145	7,614,853	.	.	1,182.8
2013	.	7,541,515	.	.	.
2014	.	7,733,621	.	.	.
2015	5,369	7,969,650	.	.	1,273.8
2016	5,308	8,018,706	.	.	1,268.0
2017	5,014	8,384,998	.	.	1,197.8
2018	5,036	8,637,619	.	.	1,210.0
2019	5,322	8,854,414	.	.	1,280.6
2020	6,011	9,309,269	.	.	1,476.2

County: county value. Kansas: state value. County Rank: highest county value ranked #1. (\$000): thousands of dollars. Nonmetro Kansas: Kansas total less Metropolitan Areas as defined by the Office of Management and Budget (OMB; released 3/6/2020). Per 1000: For nonmoney amounts, Per 1000=(county value / county population for the same year as the data) x 1000. \$ Per capita=(county value / county population for the same year as the data). Value= . indicates missing or suppressed data or value not calculated.



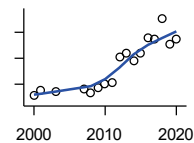
**Business**



**TOTAL ANNUAL PAYROLL(\$000):  
ARTS, ENTERTAINMENT, AND  
RECREATION**

U.S. Census Bureau, County Business Patterns. Beginning with the 2017 data, any tabulation with fewer than 3 establishments were omitted from the release. Data for these establishments are included in the broader total.

Year	County	State of Kansas	Non Metro Kansas	County Rank	Per 1000 or \$ Per Capita
2000	.	195,784	.	.	.
2001	.	203,511	.	.	.
2002	.	206,204	.	.	.
2003	.	185,049	.	.	.
2004	.	190,742	.	.	.
2005	.	196,594	.	.	.
2006	45	201,049	.	.	10.1
2007	.	220,435	.	.	.
2008	.	236,986	.	.	.
2009	.	237,116	.	.	.
2010	.	233,285	.	.	.
2011	.	234,351	.	.	.
2012	.	254,169	.	.	.
2013	.	278,474	.	.	.
2014	.	289,103	.	.	.
2015	.	300,253	.	.	.



**TOTAL ANNUAL PAYROLL(\$000):  
ACCOMMODATION AND FOOD  
SERVICES**

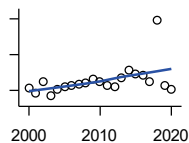
U.S. Census Bureau, County Business Patterns. Beginning with the 2017 data, any tabulation with fewer than 3 establishments were omitted from the release. Data for these establishments are included in the broader total.

Year	County	State of Kansas	Non Metro Kansas	County Rank	Per 1000 or \$ Per Capita
2000	155	926,831	.	.	32.4
2001	179	960,196	.	.	37.9
2002	.	930,510	.	.	.
2003	172	992,313	.	.	37.7
2004	.	1,046,901	.	.	.
2005	.	1,101,854	.	.	.
2006	.	1,185,280	.	.	.
2007	182	1,431,100	.	.	40.8
2008	169	1,271,594	.	.	38.4
2009	184	1,283,065	.	.	41.6
2010	200	1,296,556	.	.	45.1
2011	208	1,364,281	.	.	47.5
2012	305	1,388,337	.	.	70.1
2013	318	1,476,335	.	.	73.3
2014	291	1,572,021	.	.	68.0
2015	320	1,640,144	.	.	75.9
2016	378	1,709,193	.	.	90.3
2017	374	1,824,791	.	.	89.3
2018	453	1,880,364	.	.	108.8
2019	352	1,958,603	.	.	84.7
2020	372	1,745,238	.	.	91.4

County: county value. Kansas: state value. County Rank: highest county value ranked #1. (\$000): thousands of dollars. Nonmetro Kansas: Kansas total less Metropolitan Areas as defined by the Office of Management and Budget (OMB; released 3/6/2020). Per 1000: For nonmoney amounts, Per 1000=(county value / county population for the same year as the data) x 1000. \$ Per capita=(county value / county population for the same year as the data). Value= . indicates missing or suppressed data or value not calculated.

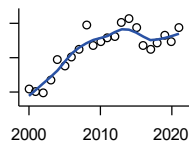
**Business**

**TOTAL ANNUAL PAYROLL(\$000):  
OTHER SERVICES**



U.S. Census Bureau, County Business Patterns. Beginning with the 2017 data, any tabulation with fewer than 3 establishments were omitted from the release. Data for these establishments are included in the broader total.

Year	County	State of Kansas	Non Metro Kansas	County Rank	Per 1000 or \$ Per Capita
2000	631	965,540	.	.	131.8
2001	574	996,716	.	.	121.5
2002	697	1,007,464	.	.	150.0
2003	535	979,466	.	.	117.4
2004	612	970,383	.	.	137.0
2005	641	1,005,537	.	.	143.3
2006	653	1,055,932	.	.	147.1
2007	676	1,141,551	.	.	151.6
2008	677	1,184,016	.	.	153.7
2009	731	1,167,154	.	.	165.3
2010	693	1,170,201	.	.	156.2
2011	658	1,173,775	.	.	150.2
2012	637	1,217,210	.	.	146.4
2013	739	1,254,933	.	.	170.3
2014	830	1,305,563	.	.	193.9
2015	778	1,341,075	.	.	184.6
2016	764	1,351,375	.	.	182.5
2017	702	1,344,179	.	.	167.7
2018	1,387	1,382,801	.	.	333.3
2019	659	1,427,711	.	.	158.6
2020	612	1,420,859	.	.	150.3



**NOMINAL TAXABLE RETAIL SALES  
(million\$)**

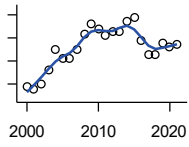
Kansas Department of Revenue

Year	County	State of Kansas	Non Metro Kansas	County Rank	Per 1000 or \$ Per Capita
2000	20.9	30,119.0	8,831.7	81	4.4
2001	20.1	30,202.2	8,700.3	81	4.3
2002	19.7	29,380.8	8,241.5	80	4.2
2003	23.5	30,694.0	8,710.6	79	5.2
2004	29.4	31,922.6	9,062.5	72	6.6
2005	27.6	32,924.2	9,386.6	77	6.2
2006	30.3	34,937.6	10,042.1	76	6.8
2007	32.5	36,180.1	10,553.2	77	7.3
2008	39.6	37,559.5	11,126.9	70	9.0
2009	33.5	35,211.8	10,351.5	75	7.6
2010	34.7	35,655.7	10,606.1	77	7.8
2011	35.7	37,257.0	11,153.5	80	8.2
2012	36.1	38,988.8	11,749.1	81	8.3
2013	40.2	40,009.0	11,993.8	79	9.3
2014	41.4	41,299.0	12,365.4	77	9.7
2015	38.9	41,635.8	11,747.6	76	9.2
2016	33.7	42,040.2	11,523.5	80	8.1
2017	32.6	41,940.1	11,449.9	79	7.8
2018	34.3	42,732.3	11,643.9	79	8.2
2019	36.5	43,732.5	12,062.7	76	8.8
2020	34.8	43,689.9	12,331.7	78	8.5
2021	38.8	48,532.8	13,413.0	78	9.6

County: county value. Kansas: state value. County Rank: highest county value ranked #1. (\$000): thousands of dollars. Nonmetro Kansas: Kansas total less Metropolitan Areas as defined by the Office of Management and Budget (OMB; released 3/6/2020). Per 1000: For nonmoney amounts, Per 1000=(county value / county population for the same year as the data) x 1000. \$ Per capita=(county value / county population for the same year as the data). Value= . indicates missing or suppressed data or value not calculated.

**Business**

RETAIL PULL FACTOR



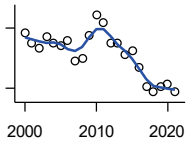
Kansas Direct Program, Kansas State University Cooperative Extension Service (1980-1999); Kansas Department of Revenue (2000- )

Year	County	State of Kansas	Non Metro Kansas	County Rank	Per 1000 or \$ Per Capita
2000	0.39	.	.	95	.
2001	0.38	.	.	91	.
2002	0.40	.	.	88	.
2003	0.46	.	.	82	.
2004	0.55	.	.	70	.
2005	0.51	.	.	78	.
2006	0.51	.	.	78	.
2007	0.55	.	.	77	.
2008	0.62	.	.	73	.
2009	0.66	.	.	71	.
2010	0.64	.	.	73	.
2011	0.61	.	.	78	.
2012	0.63	.	.	78	.
2013	0.63	.	.	80	.
2014	0.67	.	.	72	.
2015	0.69	.	.	65	.
2016	0.59	.	.	81	.
2017	0.53	.	.	87	.
2018	0.53	.	.	86	.
2019	0.58	.	.	82	.
2020	0.56	.	.	85	.
2021	0.57	.	.	87	.

County: county value. Kansas: state value. County Rank: highest county value ranked #1. (\$000): thousands of dollars. Nonmetro Kansas: Kansas total less Metropolitan Areas as defined by the Office of Management and Budget (OMB; released 3/6/2020). Per 1000: For nonmoney amounts, Per 1000=(county value / county population for the same year as the data) x 1000. \$ Per capita=(county value / county population for the same year as the data). Value= . indicates missing or suppressed data or value not calculated.

**Employment**

CIVILIAN LABOR FORCE (BLS-Place of Residence; 1990- )



U.S. Department of Labor, Bureau of Labor Statistics (BLS)

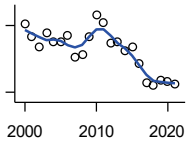
Year	County	State of Kansas	Non Metro Kansas	County Rank	Per 1000 or \$ Per Capita
2000	2,279	1,402,606	482,229	73	475.9
2001	2,222	1,398,521	475,280	73	470.5
2002	2,201	1,419,335	482,428	74	473.7
2003	2,255	1,441,065	490,161	74	494.6
2004	2,225	1,458,910	494,509	74	498.0
2005	2,212	1,458,767	490,047	74	494.5
2006	2,238	1,467,553	498,594	73	504.1
2007	2,135	1,485,414	497,048	76	478.7
2008	2,148	1,493,365	504,522	77	487.7
2009	2,266	1,512,572	516,311	75	512.4
2010	2,366	1,500,463	492,594	74	533.2
2011	2,328	1,498,000	492,563	74	531.5
2012	2,226	1,490,808	489,349	74	511.7
2013	2,222	1,489,395	485,484	74	512.1
2014	2,166	1,494,203	481,813	74	506.0
2015	2,189	1,493,782	477,546	74	519.3
2016	2,104	1,491,961	468,258	74	502.6
2017	2,011	1,488,346	461,063	76	480.4
2018	1,980	1,488,027	456,866	76	475.7
2019	2,005	1,497,517	455,858	76	482.4
2020	2,022	1,493,706	452,935	75	496.6
2021	1,980	1,495,665	453,398	76	490.8

County: county value. Kansas: state value. County Rank: highest county value ranked #1. (\$000): thousands of dollars. Nonmetro Kansas: Kansas total less Metropolitan Areas as defined by the Office of Management and Budget (OMB; released 3/6/2020). Per 1000: For nonmoney amounts, Per 1000=(county value / county population for the same year as the data) x 1000. \$ Per capita=(county value / county population for the same year as the data). Value= . indicates missing or suppressed data or value not calculated.

**Employment**

EMPLOYED (BLS-Place of Residence; 1990- )

U.S. Department of Labor, Bureau of Labor Statistics (BLS)

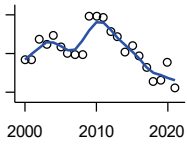


Year	County	State of Kansas	Non Metro Kansas	County Rank	Per 1000 or \$ Per Capita
2000	2,205	1,349,841	464,962	73	460.4
2001	2,148	1,338,775	455,154	73	454.8
2002	2,106	1,347,163	461,241	74	453.3
2003	2,165	1,361,115	467,622	75	474.9
2004	2,126	1,378,355	470,330	74	475.8
2005	2,125	1,384,654	467,722	74	475.1
2006	2,158	1,402,950	479,174	74	486.0
2007	2,056	1,422,109	477,983	77	461.0
2008	2,069	1,425,022	484,056	77	469.8
2009	2,148	1,408,142	485,797	75	485.8
2010	2,248	1,396,172	461,635	74	506.6
2011	2,211	1,402,198	463,723	74	504.8
2012	2,123	1,405,638	463,376	75	488.0
2013	2,124	1,410,470	461,405	74	489.5
2014	2,085	1,426,892	461,797	74	487.0
2015	2,101	1,431,533	457,899	74	498.5
2016	2,027	1,431,920	449,356	74	484.2
2017	1,945	1,434,516	445,003	76	464.6
2018	1,929	1,439,329	442,716	76	463.5
2019	1,952	1,450,705	442,108	76	469.7
2020	1,951	1,408,965	433,229	75	479.1
2021	1,936	1,447,323	441,159	76	479.9

County: county value. Kansas: state value. County Rank: highest county value ranked #1. (\$000): thousands of dollars. Nonmetro Kansas: Kansas total less Metropolitan Areas as defined by the Office of Management and Budget (OMB; released 3/6/2020). Per 1000: For nonmoney amounts, Per 1000=(county value / county population for the same year as the data) x 1000. \$ Per capita=(county value / county population for the same year as the data). Value= . indicates missing or suppressed data or value not calculated.

**Employment**

UNEMPLOYED (BLS-Place of Residence; 1990- )



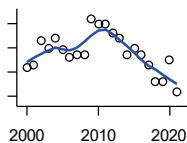
U.S. Department of Labor, Bureau of Labor Statistics (BLS)

Year	County	State of Kansas	Non Metro Kansas	County Rank	Per 1000 or \$ Per Capita
2000	74	52,765	17,267	72	15.5
2001	74	59,746	20,126	75	15.7
2002	95	72,172	21,187	71	20.4
2003	90	79,950	22,539	74	19.7
2004	99	80,555	24,179	73	22.2
2005	87	74,113	22,325	75	19.5
2006	80	64,603	19,420	74	18.0
2007	79	63,305	19,065	74	17.7
2008	79	68,343	20,466	74	17.9
2009	118	104,430	30,514	72	26.7
2010	118	104,291	30,959	70	26.6
2011	117	95,802	28,840	68	26.7
2012	103	85,170	25,973	69	23.7
2013	98	78,925	24,079	71	22.6
2014	81	67,311	20,016	71	18.9
2015	88	62,249	19,647	69	20.9
2016	77	60,041	18,902	71	18.4
2017	66	53,830	16,060	72	15.8
2018	51	48,698	14,150	75	12.3
2019	53	46,812	13,750	74	12.8
2020	71	84,741	19,706	72	17.4
2021	44	48,342	12,239	75	10.9

County: county value. Kansas: state value. County Rank: highest county value ranked #1. (\$000): thousands of dollars. Nonmetro Kansas: Kansas total less Metropolitan Areas as defined by the Office of Management and Budget (OMB; released 3/6/2020). Per 1000: For nonmoney amounts, Per 1000=(county value / county population for the same year as the data) x 1000. \$ Per capita=(county value / county population for the same year as the data). Value= . indicates missing or suppressed data or value not calculated.

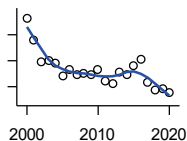
**Employment**

UNEMPLOYMENT RATE (BLS-Place of Residence; 1990- )



U.S. Department of Labor, Bureau of Labor Statistics (BLS)

Year	County	State of Kansas	Non Metro Kansas	County Rank	Per 1000 or \$ Per Capita
2000	3.2	3.8	3.6	55	.
2001	3.3	4.3	4.2	75	.
2002	4.3	5.1	4.4	40	.
2003	4.0	5.5	4.6	57	.
2004	4.4	5.5	4.9	58	.
2005	3.9	5.1	4.6	65	.
2006	3.6	4.4	3.9	50	.
2007	3.7	4.3	3.8	51	.
2008	3.7	4.6	4.1	55	.
2009	5.2	6.9	5.9	53	.
2010	5.0	7.0	6.3	63	.
2011	5.0	6.4	5.9	55	.
2012	4.6	5.7	5.3	53	.
2013	4.4	5.3	5.0	48	.
2014	3.7	4.5	4.2	56	.
2015	4.0	4.2	4.1	45	.
2016	3.7	4.0	4.0	56	.
2017	3.3	3.6	3.5	49	.
2018	2.6	3.3	3.1	71	.
2019	2.6	3.1	3.0	71	.
2020	3.5	5.7	4.4	60	.
2021	2.2	3.2	2.7	69	.



BEA EMPLOYMENT: TOTAL (Place of Work)

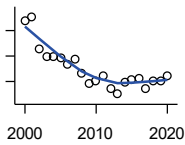
U.S. Bureau of Economic Analysis, Regional Economic Information System (REIS)

Year	County	State of Kansas	Non Metro Kansas	County Rank	Per 1000 or \$ Per Capita
2000	3,127	1,760,312	604,361	70	653.0
2001	2,962	1,767,601	592,672	70	627.1
2002	2,790	1,746,077	585,387	71	600.5
2003	2,799	1,733,694	577,860	70	614.0
2004	2,782	1,750,876	578,750	70	622.6
2005	2,680	1,765,650	577,562	72	599.2
2006	2,733	1,795,507	583,041	72	615.5
2007	2,688	1,844,355	591,924	72	602.7
2008	2,701	1,858,069	594,368	72	613.3
2009	2,691	1,813,184	580,972	72	608.5
2010	2,731	1,801,873	579,758	72	615.5
2011	2,646	1,819,044	583,725	76	604.1
2012	2,621	1,841,393	591,748	76	602.5
2013	2,716	1,869,054	597,236	74	626.0
2014	2,688	1,895,859	601,291	75	627.9
2015	2,763	1,910,954	598,589	75	655.5
2016	2,807	1,916,152	592,580	73	670.6
2017	2,634	1,914,179	584,337	76	629.2
2018	2,579	1,926,242	580,213	75	619.7
2019	2,583	1,925,204	574,496	74	621.5
2020	2,552	1,851,247	556,671	74	626.7

County: county value. Kansas: state value. County Rank: highest county value ranked #1. (\$000): thousands of dollars. Nonmetro Kansas: Kansas total less Metropolitan Areas as defined by the Office of Management and Budget (OMB; released 3/6/2020). Per 1000: For nonmoney amounts, Per 1000=(county value / county population for the same year as the data) x 1000. \$ Per capita=(county value / county population for the same year as the data). Value= . indicates missing or suppressed data or value not calculated.

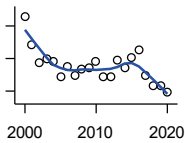
**Employment**

**BEA EMPLOYMENT: FARM**



U.S. Bureau of Economic Analysis,  
Regional Economic Information System  
(REIS)

Year	County	State of Kansas	Non Metro Kansas	County Rank	Per 1000 or \$ Per Capita
2000	669	77,477	59,088	48	139.7
2001	677	78,177	59,647	50	143.3
2002	613	70,532	53,893	48	131.9
2003	600	68,516	52,099	46	131.6
2004	599	67,586	51,246	45	134.1
2005	596	66,829	50,386	45	133.2
2006	584	64,910	48,728	45	131.5
2007	594	65,639	49,037	45	133.2
2008	565	63,820	47,682	45	128.3
2009	546	62,798	46,960	46	123.5
2010	551	63,882	47,984	48	124.2
2011	561	65,761	49,707	51	128.1
2012	535	63,753	48,167	51	123.0
2013	525	62,739	47,255	51	121.0
2014	548	64,308	48,722	52	128.0
2015	554	64,416	48,927	52	131.4
2016	555	63,840	48,539	52	132.6
2017	536	61,876	46,936	52	128.0
2018	550	63,233	48,069	52	132.1
2019	551	63,300	48,167	52	132.6
2020	562	64,281	49,038	51	138.0



**BEA EMPLOYMENT: NON-FARM**

U.S. Bureau of Economic Analysis,  
Regional Economic Information System  
(REIS)

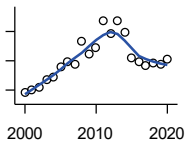
Year	County	State of Kansas	Non Metro Kansas	County Rank	Per 1000 or \$ Per Capita
2000	2,458	1,682,835	545,273	70	513.3
2001	2,285	1,689,424	533,025	71	483.8
2002	2,177	1,675,545	531,494	73	468.6
2003	2,199	1,665,178	525,761	72	482.3
2004	2,183	1,683,290	527,504	72	488.6
2005	2,084	1,698,821	527,176	74	465.9
2006	2,149	1,730,597	534,313	73	484.0
2007	2,094	1,778,716	542,887	75	469.5
2008	2,136	1,794,249	546,686	74	485.0
2009	2,145	1,750,386	534,012	75	485.1
2010	2,180	1,737,991	531,774	73	491.3
2011	2,085	1,753,283	534,018	76	476.0
2012	2,086	1,777,640	543,581	76	479.5
2013	2,191	1,806,315	549,981	75	505.0
2014	2,140	1,831,551	552,569	76	499.9
2015	2,209	1,846,538	549,662	75	524.1
2016	2,252	1,852,312	544,041	76	538.0
2017	2,098	1,852,303	537,401	76	501.2
2018	2,029	1,863,009	532,144	75	487.5
2019	2,032	1,861,904	526,329	75	488.9
2020	1,990	1,786,966	507,633	75	488.7

County: county value. Kansas: state value. County Rank: highest county value ranked #1. (\$000): thousands of dollars. Nonmetro Kansas: Kansas total less Metropolitan Areas as defined by the Office of Management and Budget (OMB; released 3/6/2020). Per 1000: For nonmoney amounts, Per 1000=(county value / county population for the same year as the data) x 1000. \$ Per capita=(county value / county population for the same year as the data). Value= . indicates missing or suppressed data or value not calculated.



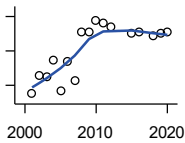
**Employment**

**AVERAGE WAGE PER JOB (\$)**



U.S. Bureau of Economic Analysis,  
Regional Economic Information System  
(REIS)

Year	County	State of Kansas	Non Metro Kansas	County Rank	Per 1000 or \$ Per Capita
2000	18,441	31,854	24,396	79	.
2001	20,319	32,859	26,379	86	.
2002	22,081	33,707	26,331	65	.
2003	26,687	35,078	28,911	64	.
2004	28,489	35,932	29,747	49	.
2005	35,621	37,467	31,646	20	.
2006	39,049	40,038	31,993	12	.
2007	37,878	41,500	33,484	17	.
2008	53,040	44,197	36,256	3	.
2009	44,748	43,860	35,739	15	.
2010	48,959	45,370	38,631	20	.
2011	67,714	48,280	42,324	7	.
2012	58,207	50,549	42,015	16	.
2013	67,186	52,629	46,073	19	.
2014	59,759	51,959	43,562	13	.
2015	41,637	52,250	42,320	42	.
2016	39,526	51,664	41,964	54	.
2017	37,156	53,007	42,137	65	.
2018	38,408	54,790	44,514	72	.
2019	37,423	56,956	45,336	79	.
2020	41,055	60,597	49,183	87	.



**BEA EMPLOYMENT: FORESTRY, FISHING, HUNTING, AND AG SUPPORT**

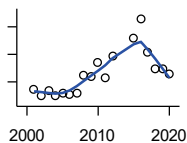
U.S. Bureau of Economic Analysis,  
Regional Economic Information System  
(REIS)

Year	County	State of Kansas	Non Metro Kansas	County Rank	Per 1000 or \$ Per Capita
2001	95	7,059	.	9	.
2002	106	8,045	.	9	.
2003	105	7,313	.	8	.
2004	115	7,623	.	6	.
2005	97	7,962	.	11	.
2006	114	7,748	.	8	.
2007	103	8,228	.	12	.
2008	131	8,646	.	9	.
2009	131	8,982	.	10	.
2010	138	9,251	.	10	.
2011	136	9,410	.	9	.
2012	134	9,691	.	9	.
2013	.	10,014	.	.	.
2014	.	10,708	.	.	.
2015	130	10,020	.	13	.
2016	131	10,383	.	15	.
2018	129	11,103	.	13	.
2019	130	10,768	.	14	.
2020	131	10,529	.	13	.

County: county value. Kansas: state value. County Rank: highest county value ranked #1. (\$000): thousands of dollars. Nonmetro Kansas: Kansas total less Metropolitan Areas as defined by the Office of Management and Budget (OMB; released 3/6/2020). Per 1000: For nonmoney amounts, Per 1000=(county value / county population for the same year as the data) x 1000. \$ Per capita=(county value / county population for the same year as the data). Value= . indicates missing or suppressed data or value not calculated.

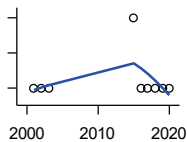
**Employment**

**BEA EMPLOYMENT: MINING**



U.S. Bureau of Economic Analysis,  
Regional Economic Information System  
(REIS)

Year	County	State of Kansas	Non Metro Kansas	County Rank	Per 1000 or \$ Per Capita
2001	174	19,592	.	23	.
2002	148	17,635	.	25	.
2003	170	19,869	.	26	.
2004	151	18,466	.	26	.
2005	157	19,489	.	24	.
2006	153	22,403	.	28	.
2007	160	24,043	.	29	.
2008	226	31,467	.	24	.
2009	221	29,941	.	26	.
2010	270	36,124	.	26	.
2011	214	31,658	.	26	.
2012	294	42,405	.	27	.
2013	.	46,585	.	.	.
2014	.	45,526	.	.	.
2015	358	46,460	.	28	.
2016	429	48,555	.	23	.
2017	307	40,710	.	29	.
2018	248	32,021	.	30	.
2019	247	29,101	.	27	.
2020	227	26,272	.	25	.



**BEA EMPLOYMENT: UTILITIES**

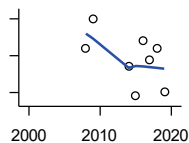
U.S. Bureau of Economic Analysis,  
Regional Economic Information System  
(REIS)

Year	County	State of Kansas	Non Metro Kansas	County Rank	Per 1000 or \$ Per Capita
2001	1	7,608	.	31	.
2002	1	7,087	.	33	.
2003	1	7,253	.	31	.
2004	.	7,356	.	.	.
2005	.	7,447	.	.	.
2006	.	7,478	.	.	.
2007	.	7,584	.	.	.
2008	.	7,855	.	.	.
2009	.	7,941	.	.	.
2010	.	8,028	.	.	.
2011	.	8,213	.	.	.
2012	.	8,155	.	.	.
2013	.	7,949	.	.	.
2014	.	7,985	.	.	.
2015	3	7,040	.	24	.
2016	1	7,133	.	27	.
2017	1	6,838	.	30	.
2018	1	6,639	.	29	.
2019	1	6,492	.	33	.
2020	1	6,573	.	42	.

County: county value. Kansas: state value. County Rank: highest county value ranked #1. (\$000): thousands of dollars. Nonmetro Kansas: Kansas total less Metropolitan Areas as defined by the Office of Management and Budget (OMB; released 3/6/2020). Per 1000: For nonmoney amounts, Per 1000=(county value / county population for the same year as the data) x 1000. \$ Per capita=(county value / county population for the same year as the data). Value= . indicates missing or suppressed data or value not calculated.

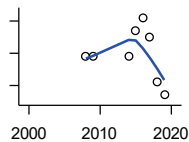
**Employment**

**BEA EMPLOYMENT:  
CONSTRUCTION**



U.S. Bureau of Economic Analysis,  
Regional Economic Information System  
(REIS)

Year	County	State of Kansas	Non Metro Kansas	County Rank	Per 1000 or \$ Per Capita
2001	.	92,647	27,972	.	.
2002	.	90,370	.	.	.
2003	.	91,725	26,681	.	.
2004	.	93,271	.	.	.
2005	.	94,836	.	.	.
2006	.	97,449	.	.	.
2007	.	99,119	29,179	.	.
2008	67	97,741	.	80	.
2009	75	90,165	28,077	79	.
2010	.	84,708	26,402	.	.
2011	.	83,332	25,999	.	.
2012	.	85,966	.	.	.
2013	.	88,094	.	.	.
2014	62	91,143	.	80	.
2015	54	91,458	27,583	85	.
2016	69	93,539	27,151	81	.
2017	64	92,046	25,579	81	.
2018	67	92,985	25,530	83	.
2019	55	94,858	25,701	85	.



**BEA EMPLOYMENT:  
MANUFACTURING**

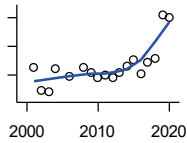
U.S. Bureau of Economic Analysis,  
Regional Economic Information System  
(REIS)

Year	County	State of Kansas	Non Metro Kansas	County Rank	Per 1000 or \$ Per Capita
2001	.	199,980	73,170	.	.
2002	.	188,905	70,691	.	.
2003	.	179,013	68,418	.	.
2004	.	181,738	69,669	.	.
2005	.	185,459	71,072	.	.
2006	.	188,047	71,704	.	.
2007	.	192,930	73,488	.	.
2008	72	193,116	72,235	77	.
2009	72	173,854	64,961	77	.
2010	.	166,000	62,884	.	.
2011	.	167,302	64,361	.	.
2012	.	169,308	65,944	.	.
2013	.	170,113	67,251	.	.
2014	72	169,307	68,299	76	.
2015	76	168,324	66,978	75	.
2016	78	167,723	65,796	74	.
2017	75	168,438	66,795	74	.
2018	68	171,778	68,181	77	.
2019	66	173,605	67,879	77	.

County: county value. Kansas: state value. County Rank: highest county value ranked #1. (\$000): thousands of dollars. Nonmetro Kansas: Kansas total less Metropolitan Areas as defined by the Office of Management and Budget (OMB; released 3/6/2020). Per 1000: For nonmoney amounts, Per 1000=(county value / county population for the same year as the data) x 1000. \$ Per capita=(county value / county population for the same year as the data). Value= . indicates missing or suppressed data or value not calculated.

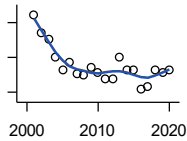
**Employment**

**BEA EMPLOYMENT: WHOLESALE TRADE**



U.S. Bureau of Economic Analysis,  
Regional Economic Information System  
(REIS)

Year	County	State of Kansas	Non Metro Kansas	County Rank	Per 1000 or \$ Per Capita
2001	45	65,698	.	83	.
2002	29	65,408	.	84	.
2003	28	63,504	.	85	.
2004	44	64,434	.	81	.
2005	.	64,587	.	.	.
2006	39	64,743	.	80	.
2007	.	65,993	.	.	.
2008	45	67,693	.	77	.
2009	42	65,954	.	77	.
2010	38	64,376	.	81	.
2011	40	64,712	.	83	.
2012	38	63,973	.	80	.
2013	42	64,999	.	78	.
2014	46	69,295	.	76	.
2015	51	68,444	.	79	.
2016	41	64,843	.	80	.
2017	49	65,014	.	79	.
2018	52	64,745	.	78	.
2019	82	63,324	.	68	.
2020	80	60,844	.	72	.



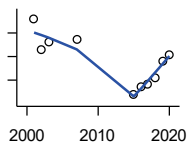
**BEA EMPLOYMENT: RETAIL TRADE**

U.S. Bureau of Economic Analysis,  
Regional Economic Information System  
(REIS)

Year	County	State of Kansas	Non Metro Kansas	County Rank	Per 1000 or \$ Per Capita
2001	209	198,069	.	76	.
2002	188	196,112	.	80	.
2003	181	194,545	64,173	83	.
2004	160	192,957	63,265	87	.
2005	146	191,656	62,506	91	.
2006	155	190,391	62,082	86	.
2007	141	190,643	61,716	88	.
2008	140	185,907	59,783	89	.
2009	149	181,262	58,714	84	.
2010	142	177,858	57,470	86	.
2011	135	180,548	57,734	90	.
2012	136	180,596	57,349	87	.
2013	160	183,245	57,556	80	.
2014	146	185,899	57,855	84	.
2015	145	188,421	58,516	86	.
2016	123	188,505	57,864	93	.
2017	127	186,633	56,715	92	.
2018	146	183,323	.	83	.
2019	143	177,240	53,427	82	.
2020	146	171,777	52,563	80	.

County: county value. Kansas: state value. County Rank: highest county value ranked #1. (\$000): thousands of dollars. Nonmetro Kansas: Kansas total less Metropolitan Areas as defined by the Office of Management and Budget (OMB; released 3/6/2020). Per 1000: For nonmoney amounts, Per 1000=(county value / county population for the same year as the data) x 1000. \$ Per capita=(county value / county population for the same year as the data). Value= . indicates missing or suppressed data or value not calculated.

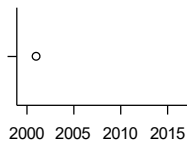
**Employment**



**BEA EMPLOYMENT:  
TRANSPORTATION AND  
WAREHOUSING**

U.S. Bureau of Economic Analysis,  
Regional Economic Information System  
(REIS)

Year	County	State of Kansas	Non Metro Kansas	County Rank	Per 1000 or \$ Per Capita
2001	76	56,302	.	33	.
2002	63	55,319	.	41	.
2003	66	55,509	.	37	.
2004	.	55,479	.	.	.
2005	.	56,287	.	.	.
2006	.	57,506	.	.	.
2007	67	59,277	.	43	.
2008	.	58,725	.	.	.
2009	.	56,238	.	.	.
2010	.	55,179	.	.	.
2011	.	57,449	.	.	.
2012	.	59,756	.	.	.
2013	.	59,780	.	.	.
2014	.	60,565	.	.	.
2015	44	63,256	.	40	.
2016	47	65,705	.	39	.
2017	48	70,641	.	45	.
2018	51	75,308	.	44	.
2019	58	81,209	.	45	.
2020	61	80,543	.	53	.



**BEA EMPLOYMENT: INFORMATION**

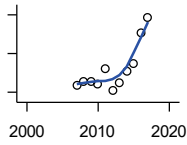
U.S. Bureau of Economic Analysis,  
Regional Economic Information System  
(REIS)

Year	County	State of Kansas	Non Metro Kansas	County Rank	Per 1000 or \$ Per Capita
2001	11	54,895	.	71	.
2002	.	50,728	.	.	.
2003	.	48,328	6,860	.	.
2004	.	45,617	.	.	.
2005	.	43,840	.	.	.
2006	.	43,925	.	.	.
2007	.	45,115	.	.	.
2008	.	42,958	.	.	.
2009	.	38,677	.	.	.
2010	.	33,432	.	.	.
2011	.	32,160	.	.	.
2012	.	31,829	.	.	.
2013	.	31,737	.	.	.
2014	.	32,316	.	.	.
2015	.	25,282	.	.	.
2016	.	24,998	.	.	.

County: county value. Kansas: state value. County Rank: highest county value ranked #1. (\$000): thousands of dollars. Nonmetro Kansas: Kansas total less Metropolitan Areas as defined by the Office of Management and Budget (OMB; released 3/6/2020). Per 1000: For nonmoney amounts, Per 1000=(county value / county population for the same year as the data) x 1000. \$ Per capita=(county value / county population for the same year as the data). Value= . indicates missing or suppressed data or value not calculated.

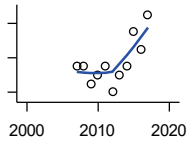
**Employment**

**BEA EMPLOYMENT: FINANCE AND INSURANCE**



U.S. Bureau of Economic Analysis,  
Regional Economic Information System  
(REIS)

Year	County	State of Kansas	Non Metro Kansas	County Rank	Per 1000 or \$ Per Capita
2001	.	76,118	.	.	.
2002	.	78,206	.	.	.
2003	.	78,441	.	.	.
2004	.	78,350	.	.	.
2005	.	78,952	.	.	.
2006	.	80,900	.	.	.
2007	87	86,094	.	59	.
2008	91	89,590	.	57	.
2009	91	93,573	.	60	.
2010	88	92,428	.	60	.
2011	104	99,495	.	58	.
2012	82	98,640	.	60	.
2013	90	99,998	.	60	.
2014	102	98,209	.	64	.
2015	110	100,534	.	59	.
2016	141	102,699	.	54	.
2017	157	101,563	.	52	.



**BEA EMPLOYMENT: REAL ESTATE, RENTAL, AND LEASING**

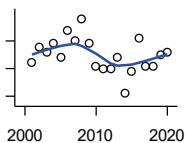
U.S. Bureau of Economic Analysis,  
Regional Economic Information System  
(REIS)

Year	County	State of Kansas	Non Metro Kansas	County Rank	Per 1000 or \$ Per Capita
2001	.	45,237	.	.	.
2002	.	44,970	.	.	.
2003	.	47,095	.	.	.
2004	.	50,181	.	.	.
2005	.	53,335	.	.	.
2006	.	55,342	.	.	.
2007	21	57,694	.	62	.
2008	21	57,933	.	57	.
2009	19	57,132	.	68	.
2010	20	59,578	.	68	.
2011	21	61,821	.	68	.
2012	18	60,432	.	70	.
2013	20	62,134	.	73	.
2014	21	64,705	.	75	.
2015	25	66,604	.	63	.
2016	23	68,395	.	67	.
2017	27	70,304	.	65	.

County: county value. Kansas: state value. County Rank: highest county value ranked #1. (\$000): thousands of dollars. Nonmetro Kansas: Kansas total less Metropolitan Areas as defined by the Office of Management and Budget (OMB; released 3/6/2020). Per 1000: For nonmoney amounts, Per 1000=(county value / county population for the same year as the data) x 1000. \$ Per capita=(county value / county population for the same year as the data). Value= . indicates missing or suppressed data or value not calculated.

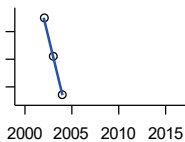
**Employment**

**BEA EMPLOYMENT: PROFESSIONAL AND TECHNICAL SERVICES**



U.S. Bureau of Economic Analysis, Regional Economic Information System (REIS)

Year	County	State of Kansas	Non Metro Kansas	County Rank	Per 1000 or \$ Per Capita
2001	72	81,396	.	58	.
2002	78	80,684	.	54	.
2003	76	80,311	.	46	.
2004	79	85,550	.	49	.
2005	74	85,003	.	54	.
2006	84	87,381	.	51	.
2007	80	92,717	.	56	.
2008	88	95,362	.	57	.
2009	79	93,232	.	57	.
2010	71	93,037	.	61	.
2011	70	93,237	.	64	.
2012	70	95,360	.	64	.
2013	74	100,795	.	62	.
2014	61	102,210	.	67	.
2015	69	105,625	.	65	.
2016	81	108,059	.	62	.
2017	71	109,041	.	64	.
2018	71	110,513	.	64	.
2019	75	109,637	.	61	.
2020	76	108,634	.	58	.



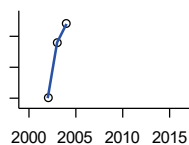
**BEA EMPLOYMENT: MANAGEMENT OF COMPANIES AND ENTERPRISES**

U.S. Bureau of Economic Analysis, Regional Economic Information System (REIS)

Year	County	State of Kansas	Non Metro Kansas	County Rank	Per 1000 or \$ Per Capita
2001	.	13,832	.	.	.
2002	15	12,576	.	26	.
2003	8	11,135	.	20	.
2004	1	10,614	.	20	.
2005	.	11,811	.	.	.
2006	.	13,061	.	.	.
2007	.	13,398	.	.	.
2008	.	15,234	.	.	.
2009	.	14,849	.	.	.
2010	.	16,579	.	.	.
2011	.	15,343	.	.	.
2012	.	15,075	.	.	.
2013	.	16,667	.	.	.
2014	.	20,441	.	.	.
2015	.	29,604	.	.	.
2016	.	27,824	.	.	.

County: county value. Kansas: state value. County Rank: highest county value ranked #1. (\$000): thousands of dollars. Nonmetro Kansas: Kansas total less Metropolitan Areas as defined by the Office of Management and Budget (OMB; released 3/6/2020). Per 1000: For nonmoney amounts, Per 1000=(county value / county population for the same year as the data) x 1000. \$ Per capita=(county value / county population for the same year as the data). Value= . indicates missing or suppressed data or value not calculated.

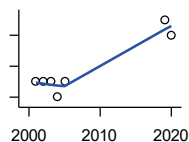
**Employment**



**BEA EMPLOYMENT:  
ADMINISTRATIVE AND WASTE  
SERVICES**

U.S. Bureau of Economic Analysis,  
Regional Economic Information System  
(REIS)

Year	County	State of Kansas	Non Metro Kansas	County Rank	Per 1000 or \$ Per Capita
2001	.	81,573	.	.	.
2002	50	82,992	.	46	.
2003	59	81,298	.	40	.
2004	62	85,721	.	46	.
2005	.	89,933	.	.	.
2006	.	93,688	.	.	.
2007	.	98,865	.	.	.
2008	.	97,440	.	.	.
2009	.	92,455	.	.	.
2010	.	93,675	.	.	.
2011	.	97,969	.	.	.
2012	.	100,490	.	.	.
2013	.	104,680	.	.	.
2014	.	107,218	18,836	.	.
2015	.	103,436	18,767	.	.
2016	.	103,233	18,428	.	.



**BEA EMPLOYMENT: EDUCATIONAL  
SERVICES**

U.S. Bureau of Economic Analysis,  
Regional Economic Information System  
(REIS)

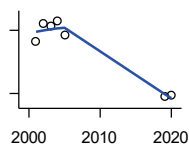
Year	County	State of Kansas	Non Metro Kansas	County Rank	Per 1000 or \$ Per Capita
2001	7	21,169	.	48	.
2002	7	22,173	.	51	.
2003	7	22,651	.	55	.
2004	6	21,601	.	74	.
2005	7	22,177	.	68	.
2006	.	22,438	.	.	.
2007	.	23,647	.	.	.
2008	.	24,653	.	.	.
2009	.	25,120	.	.	.
2010	.	26,071	.	.	.
2011	.	26,080	.	.	.
2012	.	26,625	.	.	.
2013	.	27,508	.	.	.
2014	.	28,708	.	.	.
2015	.	28,794	.	.	.
2016	.	27,996	.	.	.
2019	11	29,586	.	43	.
2020	10	27,508	.	42	.

County: county value. Kansas: state value. County Rank: highest county value ranked #1. (\$000): thousands of dollars. Nonmetro Kansas: Kansas total less Metropolitan Areas as defined by the Office of Management and Budget (OMB; released 3/6/2020). Per 1000: For nonmoney amounts, Per 1000=(county value / county population for the same year as the data) x 1000. \$ Per capita=(county value / county population for the same year as the data). Value= . indicates missing or suppressed data or value not calculated.



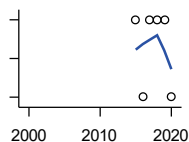
**Employment**

**BEA EMPLOYMENT: HEALTH CARE AND SOCIAL ASSISTANCE**



U.S. Bureau of Economic Analysis, Regional Economic Information System (REIS)

Year	County	State of Kansas	Non Metro Kansas	County Rank	Per 1000 or \$ Per Capita
2001	189	165,415	.	41	.
2002	207	168,198	.	40	.
2003	204	169,654	.	43	.
2004	209	172,796	.	46	.
2005	196	173,949	.	40	.
2006	.	176,919	.	.	.
2007	.	182,160	.	.	.
2008	.	186,051	.	.	.
2009	.	188,499	.	.	.
2010	.	188,383	.	.	.
2011	.	190,736	.	.	.
2012	.	192,991	.	.	.
2013	.	193,687	.	.	.
2014	.	194,632	.	.	.
2015	.	199,724	.	.	.
2016	.	201,830	.	.	.
2019	137	206,646	.	47	.
2020	138	204,942	.	44	.



**BEA EMPLOYMENT: ARTS, ENTERTAINMENT, AND RECREATION**

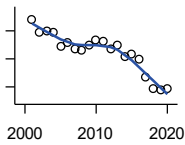
U.S. Bureau of Economic Analysis, Regional Economic Information System (REIS)

Year	County	State of Kansas	Non Metro Kansas	County Rank	Per 1000 or \$ Per Capita
2001	.	25,012	.	.	.
2002	.	25,668	.	.	.
2003	.	24,116	.	.	.
2004	.	25,355	.	.	.
2005	.	26,067	.	.	.
2006	.	26,505	.	.	.
2007	.	27,489	.	.	.
2008	.	27,501	.	.	.
2009	.	27,203	.	.	.
2010	.	27,479	.	.	.
2011	.	28,487	.	.	.
2012	.	30,729	.	.	.
2013	.	31,068	.	.	.
2014	.	32,154	.	.	.
2015	13	31,169	.	55	.
2016	11	32,373	.	60	.
2017	13	33,213	.	50	.
2018	13	33,837	.	50	.
2019	13	33,082	.	54	.
2020	11	26,644	.	50	.

County: county value. Kansas: state value. County Rank: highest county value ranked #1. (\$000): thousands of dollars. Nonmetro Kansas: Kansas total less Metropolitan Areas as defined by the Office of Management and Budget (OMB; released 3/6/2020). Per 1000: For nonmoney amounts, Per 1000=(county value / county population for the same year as the data) x 1000. \$ Per capita=(county value / county population for the same year as the data). Value= . indicates missing or suppressed data or value not calculated.

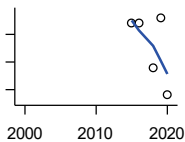
**Employment**

**BEA EMPLOYMENT: GOVERNMENT AND GOVERNMENT ENTERPRISES**



U.S. Bureau of Economic Analysis, Regional Economic Information System (REIS)

Year	County	State of Kansas	Non Metro Kansas	County Rank	Per 1000 or \$ Per Capita
2001	791	282,293	102,993	60	.
2002	747	281,427	103,581	63	.
2003	748	282,459	103,389	63	.
2004	747	283,877	103,946	62	.
2005	695	282,798	103,194	65	.
2006	708	288,372	104,103	64	.
2007	687	294,413	104,598	67	.
2008	681	298,580	104,718	68	.
2009	698	300,422	104,081	68	.
2010	719	303,875	103,382	65	.
2011	714	299,952	101,535	65	.
2012	686	298,068	101,180	65	.
2013	699	297,689	101,232	64	.
2014	659	296,956	100,634	66	.
2015	665	295,799	99,719	66	.
2016	647	291,536	98,520	66	.
2017	587	295,748	99,542	70	.
2018	546	298,105	99,499	72	.
2019	539	302,017	100,227	74	.
2020	543	292,583	96,477	71	.



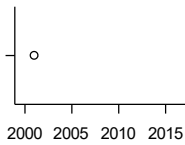
**BEA EMPLOYMENT: ACCOMMODATION AND FOOD SERVICES**

U.S. Bureau of Economic Analysis, Regional Economic Information System (REIS)

Year	County	State of Kansas	Non Metro Kansas	County Rank	Per 1000 or \$ Per Capita
2001	.	103,353	.	.	.
2002	.	103,692	.	.	.
2003	.	105,138	.	.	.
2004	.	106,694	.	.	.
2005	.	107,303	.	.	.
2006	.	109,888	.	.	.
2007	.	110,863	.	.	.
2008	.	111,092	.	.	.
2009	.	109,353	.	.	.
2010	.	108,628	.	.	.
2011	.	110,514	.	.	.
2012	.	112,574	.	.	.
2013	.	114,102	.	.	.
2014	.	115,768	.	.	.
2015	67	118,503	.	52	.
2016	67	119,764	.	51	.
2018	59	121,900	.	51	.
2019	68	122,819	.	53	.
2020	54	106,561	.	54	.

County: county value. Kansas: state value. County Rank: highest county value ranked #1. (\$000): thousands of dollars. Nonmetro Kansas: Kansas total less Metropolitan Areas as defined by the Office of Management and Budget (OMB; released 3/6/2020). Per 1000: For nonmoney amounts, Per 1000=(county value / county population for the same year as the data) x 1000. \$ Per capita=(county value / county population for the same year as the data). Value= . indicates missing or suppressed data or value not calculated.

**Employment**

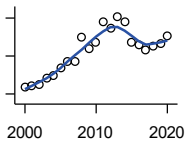


BEA EMPLOYMENT: OTHER SERVICES, EXCEPT PUBLIC ADMINISTRATION

U.S. Bureau of Economic Analysis, Regional Economic Information System (REIS)

Year	County	State of Kansas	Non Metro Kansas	County Rank	Per 1000 or \$ Per Capita
2001	165	92,176	.	69	.
2002	.	95,350	.	.	.
2003	.	95,821	32,629	.	.
2004	.	95,610	.	.	.
2005	.	95,930	32,555	.	.
2006	.	96,413	.	.	.
2007	.	98,444	.	.	.
2008	.	96,705	.	.	.
2009	.	95,534	.	.	.
2010	.	93,302	.	.	.
2011	.	94,865	.	.	.
2012	.	94,977	.	.	.
2013	.	95,471	.	.	.
2014	.	97,806	.	.	.
2015	.	98,041	.	.	.
2016	.	97,219	.	.	.

**Income**



BEA PER CAPITA PERSONAL INCOME (\$)

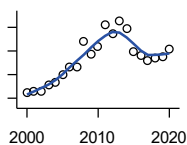
U.S. Bureau of Economic Analysis, Regional Economic Information System (REIS)

Year	County	State of Kansas	Non Metro Kansas	County Rank	Per 1000 or \$ Per Capita
2000	23,545	28,253	23,116	58	.
2001	24,212	29,112	24,576	74	.
2002	24,789	29,248	24,314	43	.
2003	28,220	30,074	26,017	35	.
2004	29,627	30,843	26,583	23	.
2005	33,706	32,545	28,356	14	.
2006	37,334	35,690	29,782	4	.
2007	37,444	38,057	32,034	15	.
2008	49,720	41,257	35,211	3	.
2009	43,575	39,431	33,876	10	.
2010	47,055	39,960	35,795	14	.
2011	58,201	43,015	39,041	10	.
2012	54,463	45,294	39,660	12	.
2013	60,775	46,174	41,747	15	.
2014	57,850	47,013	41,042	9	.
2015	46,914	47,332	40,638	24	.
2016	45,640	47,326	40,797	30	.
2017	43,144	48,756	41,314	42	.
2018	45,168	50,811	43,283	46	.
2019	46,272	52,820	44,491	46	.
2020	50,623	55,677	48,415	51	.

County: county value. Kansas: state value. County Rank: highest county value ranked #1. (\$000): thousands of dollars. Nonmetro Kansas: Kansas total less Metropolitan Areas as defined by the Office of Management and Budget (OMB; released 3/6/2020). Per 1000: For nonmoney amounts, Per 1000=(county value / county population for the same year as the data) x 1000. \$ Per capita=(county value / county population for the same year as the data). Value= . indicates missing or suppressed data or value not calculated.

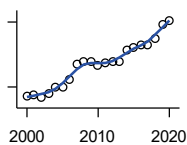
**Income**

**SOURCES OF PERSONAL INCOME:  
TOTAL PERSONAL INCOME (\$000)**



U.S. Bureau of Economic Analysis,  
Regional Economic Information System  
(REIS)

Year	County	State of Kansas	Non Metro Kansas	County Rank	Per 1000 or \$ Per Capita
2000	111,888	76,105,125	22,273,838	74	23,363.5
2001	114,355	78,664,651	23,411,174	74	24,212.4
2002	115,170	79,365,190	23,000,314	73	24,789.1
2003	128,653	81,890,340	24,494,191	73	28,219.6
2004	132,375	84,335,940	24,924,467	71	29,627.4
2005	150,765	89,346,228	26,452,291	71	33,705.6
2006	165,762	98,610,188	27,661,596	64	37,333.8
2007	166,999	105,943,199	29,715,946	69	37,443.7
2008	218,966	115,852,478	32,614,565	60	49,719.8
2009	192,687	111,697,350	31,394,702	69	43,574.6
2010	208,407	114,239,828	33,291,419	69	46,970.3
2011	255,096	123,558,772	36,221,488	64	58,241.1
2012	236,915	130,948,127	36,696,759	66	54,463.2
2013	263,764	133,979,908	38,513,959	65	60,789.1
2014	247,715	136,878,718	37,680,598	66	57,863.8
2015	197,835	138,336,768	37,081,851	73	46,935.9
2016	191,415	138,533,890	36,930,885	73	45,727.4
2017	180,646	142,729,689	37,104,963	73	43,154.8
2018	186,049	148,955,739	38,589,364	75	44,701.8
2019	188,836	154,961,001	39,424,148	75	45,437.0
2020	204,820	163,462,179	42,618,591	75	50,299.6



**SOURCES OF PERSONAL INCOME:  
WAGES AND SALARIES (\$000)**

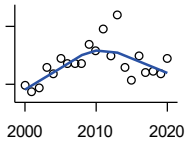
U.S. Bureau of Economic Analysis,  
Regional Economic Information System  
(REIS)

Year	County	State of Kansas	Non Metro Kansas	County Rank	Per 1000 or \$ Per Capita
2000	32,959	41,766,878	10,254,250	73	6,882.2
2001	33,235	43,269,734	10,518,206	74	7,036.8
2002	32,479	43,875,159	10,696,876	74	6,990.7
2003	33,509	44,488,560	10,894,971	73	7,350.1
2004	35,076	46,702,068	11,333,617	73	7,850.5
2005	35,092	48,537,956	11,614,130	75	7,845.3
2006	36,687	52,083,584	12,299,340	76	8,262.8
2007	40,417	55,442,368	13,093,908	76	9,062.1
2008	40,827	57,623,385	13,647,143	76	9,270.4
2009	40,749	55,605,578	13,199,674	76	9,215.1
2010	40,035	56,089,711	13,345,291	78	9,023.0
2011	40,527	58,104,706	13,856,458	80	9,252.7
2012	40,849	60,616,457	14,473,599	83	9,390.6
2013	40,941	61,872,023	14,781,792	81	9,435.6
2014	43,499	64,457,652	15,385,500	79	10,160.9
2015	44,012	66,729,598	15,454,485	82	10,441.8
2016	44,825	67,253,399	15,422,058	81	10,708.3
2017	44,840	68,830,861	15,731,853	82	10,711.9
2018	46,066	71,580,544	16,311,725	81	11,068.2
2019	49,532	74,404,771	16,882,299	79	11,918.2
2020	50,321	75,798,310	17,251,300	79	12,357.8

County: county value. Kansas: state value. County Rank: highest county value ranked #1. (\$000): thousands of dollars. Nonmetro Kansas: Kansas total less Metropolitan Areas as defined by the Office of Management and Budget (OMB; released 3/6/2020). Per 1000: For nonmoney amounts, Per 1000=(county value / county population for the same year as the data) x 1000. \$ Per capita=(county value / county population for the same year as the data). Value= . indicates missing or suppressed data or value not calculated.

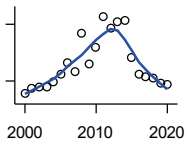
**Income**

**SOURCES OF PERSONAL INCOME:  
PROPRIETORS-FARM (\$000)**



U.S. Bureau of Economic Analysis,  
Regional Economic Information System  
(REIS)

Year	County	State of Kansas	Non Metro Kansas	County Rank	Per 1000 or \$ Per Capita
2000	9,652	668,539	673,707	30	2,015.5
2001	5,883	779,473	769,336	49	1,245.6
2002	7,816	145,064	187,033	13	1,682.3
2003	18,506	1,281,076	1,195,298	22	4,059.2
2004	15,135	1,149,425	938,524	25	3,387.4
2005	23,193	1,609,604	1,469,139	24	5,185.1
2006	20,759	766,047	663,735	11	4,675.5
2007	20,711	1,131,607	1,040,350	14	4,643.7
2008	20,419	1,582,092	1,404,900	35	4,636.5
2009	30,591	1,585,995	1,390,349	12	6,917.9
2010	27,300	2,149,482	2,029,067	25	6,152.8
2011	38,480	3,188,519	2,989,880	32	8,785.4
2012	24,816	2,519,555	2,296,875	39	5,704.8
2013	45,989	4,499,190	4,158,419	36	10,599.0
2014	19,009	2,231,181	2,157,992	39	4,440.3
2015	12,043	1,300,733	1,294,370	34	2,857.2
2016	24,738	1,577,060	1,564,511	21	5,909.7
2017	16,061	838,480	838,290	22	3,836.8
2018	16,703	1,050,662	971,690	21	4,013.2
2019	15,461	998,038	878,247	27	3,720.2
2020	23,430	2,151,349	1,887,881	34	5,753.9



**SOURCES OF PERSONAL INCOME:  
PROPRIETORS-NONFARM (\$000)**

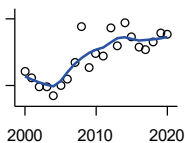
U.S. Bureau of Economic Analysis,  
Regional Economic Information System  
(REIS)

Year	County	State of Kansas	Non Metro Kansas	County Rank	Per 1000 or \$ Per Capita
2000	6,975	4,580,476	1,493,470	79	1,456.5
2001	12,681	4,510,530	1,855,621	64	2,684.9
2002	12,986	5,036,100	1,966,784	64	2,795.1
2003	13,956	4,719,377	1,916,735	58	3,061.2
2004	19,585	4,003,922	2,073,898	42	4,383.4
2005	27,653	4,455,294	2,200,971	34	6,182.2
2006	39,680	7,343,524	2,694,895	29	8,936.9
2007	30,042	7,280,197	2,436,574	39	6,735.9
2008	70,289	9,255,953	2,971,923	20	15,960.3
2009	37,791	9,323,551	2,858,848	35	8,546.1
2010	55,000	9,658,261	3,498,040	27	12,395.8
2011	88,224	12,196,566	4,186,007	22	20,142.5
2012	75,268	15,773,140	4,446,004	25	17,303.0
2013	82,480	16,441,660	4,492,127	23	19,009.0
2014	84,174	15,954,254	4,455,081	23	19,662.2
2015	45,149	15,536,116	4,386,172	41	10,711.5
2016	27,821	14,075,310	3,783,829	57	6,646.2
2017	24,000	15,371,957	3,908,254	66	5,733.4
2018	23,310	15,716,877	4,238,775	69	5,600.7
2019	18,234	16,705,488	3,921,051	71	4,387.4
2020	16,986	16,718,952	3,823,329	73	4,171.4

County: county value. Kansas: state value. County Rank: highest county value ranked #1. (\$000): thousands of dollars. Nonmetro Kansas: Kansas total less Metropolitan Areas as defined by the Office of Management and Budget (OMB; released 3/6/2020). Per 1000: For nonmoney amounts, Per 1000=(county value / county population for the same year as the data) x 1000. \$ Per capita=(county value / county population for the same year as the data). Value= . indicates missing or suppressed data or value not calculated.

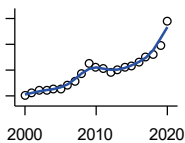
**Income**

**SOURCES OF PERSONAL INCOME:  
DIVIDENDS,INTEREST,RENT(\$000)**



U.S. Bureau of Economic Analysis,  
Regional Economic Information System  
(REIS)

Year	County	State of Kansas	Non Metro Kansas	County Rank	Per 1000 or \$ Per Capita
2000	28,182	15,916,201	4,736,921	72	5,884.7
2001	26,590	15,770,830	4,699,417	73	5,629.9
2002	24,581	15,111,563	4,316,887	73	5,290.8
2003	24,664	15,370,764	4,360,311	74	5,410.0
2004	22,592	15,820,469	4,251,925	73	5,056.4
2005	24,882	17,147,069	4,485,387	74	5,562.7
2006	26,506	20,117,848	4,945,184	74	5,969.8
2007	30,044	22,269,186	5,526,219	74	6,736.3
2008	38,110	24,972,485	6,180,979	70	8,653.5
2009	29,132	21,453,879	5,308,474	76	6,588.0
2010	32,156	20,861,351	5,414,285	72	7,247.2
2011	31,497	23,387,567	5,781,075	74	7,191.1
2012	37,928	25,689,368	6,389,505	71	8,719.1
2013	33,930	24,832,212	5,984,811	73	7,819.8
2014	38,995	27,412,684	6,403,356	73	9,108.9
2015	35,943	27,244,414	6,423,685	72	8,527.4
2016	33,785	27,293,441	6,389,161	74	8,071.0
2017	33,081	28,385,472	6,700,156	78	7,902.8
2018	34,876	29,953,419	6,772,504	77	8,379.6
2019	36,749	30,820,276	6,957,987	74	8,842.4
2020	36,384	30,283,520	6,844,745	73	8,935.2



**SOURCES OF PERSONAL INCOME:  
TRANSFER PAYMENTS (\$000)**

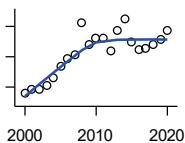
U.S. Bureau of Economic Analysis,  
Regional Economic Information System  
(REIS)

Year	County	State of Kansas	Non Metro Kansas	County Rank	Per 1000 or \$ Per Capita
2000	25,377	9,650,835	4,036,781	66	5,299.0
2001	26,325	10,549,124	4,355,457	67	5,573.8
2002	27,004	11,208,997	4,553,978	67	5,812.3
2003	27,065	11,709,049	4,702,911	68	5,936.6
2004	27,864	12,040,452	4,802,536	67	6,236.3
2005	27,607	12,696,735	5,059,314	69	6,171.9
2006	29,112	13,642,787	5,455,207	70	6,556.8
2007	30,742	14,686,821	5,775,024	70	6,892.8
2008	33,783	16,552,460	6,322,722	69	7,671.0
2009	37,751	18,025,603	6,790,962	67	8,537.1
2010	36,294	19,189,749	7,089,258	69	8,179.9
2011	35,744	19,625,770	7,255,825	72	8,160.7
2012	33,978	19,354,458	7,148,177	73	7,811.0
2013	35,042	19,639,358	7,185,636	71	8,076.1
2014	35,902	20,380,970	7,399,809	72	8,386.4
2015	36,410	21,116,856	7,623,577	72	8,638.2
2016	37,944	21,884,629	7,886,000	72	9,064.5
2017	39,859	22,559,744	8,062,517	70	9,522.0
2018	41,303	23,628,033	8,393,617	70	9,923.8
2019	44,761	25,050,174	8,845,371	70	10,770.2
2020	53,755	32,319,421	11,074,190	70	13,201.1

County: county value. Kansas: state value. County Rank: highest county value ranked #1. (\$000): thousands of dollars. Nonmetro Kansas: Kansas total less Metropolitan Areas as defined by the Office of Management and Budget (OMB; released 3/6/2020). Per 1000: For nonmoney amounts, Per 1000=(county value / county population for the same year as the data) x 1000. \$ Per capita=(county value / county population for the same year as the data). Value= . indicates missing or suppressed data or value not calculated.

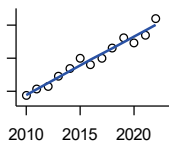
**Income**

**SOURCES OF PERSONAL INCOME:  
LESS SOCIAL INSURANCE (\$000)**



U.S. Bureau of Economic Analysis,  
Regional Economic Information System  
(REIS)

Year	County	State of Kansas	Non Metro Kansas	County Rank	Per 1000 or \$ Per Capita
2000	5,618	6,655,813	1,663,044	71	1,173.1
2001	5,894	6,869,934	1,740,915	73	1,247.9
2002	5,878	7,008,361	1,778,636	74	1,265.2
2003	6,102	7,172,781	1,821,858	73	1,338.5
2004	6,644	7,556,560	1,904,014	72	1,487.0
2005	7,387	7,911,241	1,986,907	71	1,651.5
2006	7,871	8,406,937	2,090,313	71	1,772.7
2007	8,098	8,806,941	2,180,587	73	1,815.7
2008	10,228	9,207,010	2,299,399	71	2,322.4
2009	8,774	9,002,859	2,248,703	72	1,984.2
2010	9,221	9,235,760	2,321,191	71	2,078.2
2011	9,238	8,515,986	2,139,991	69	2,109.1
2012	8,408	8,816,128	2,195,919	71	1,932.9
2013	9,727	10,225,399	2,540,439	71	2,241.8
2014	10,500	10,609,601	2,635,009	71	2,452.7
2015	8,963	11,028,204	2,663,038	77	2,126.5
2016	8,470	10,915,915	2,604,579	78	2,023.4
2017	8,512	11,224,218	2,669,954	77	2,033.4
2018	8,795	11,749,229	2,797,106	78	2,113.2
2019	9,167	12,245,451	2,889,336	78	2,205.7
2020	9,745	12,715,152	3,027,656	78	2,393.2



**HUD MEDIAN FAMILY INCOME**

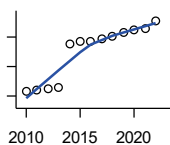
U.S. Department of Housing and Urban  
Development (HUD)

Year	County	State of Kansas	Non Metro Kansas	County Rank	Per 1000 or \$ Per Capita
2010	48,600	63,100	.	88	.
2011	50,700	64,300	.	76	.
2012	51,400	65,200	.	76	.
2013	54,600	64,800	.	64	.
2014	56,900	64,400	.	61	.
2015	60,100	66,300	.	50	.
2016	58,200	66,700	.	53	.
2017	59,900	68,500	.	59	.
2018	63,200	73,100	.	52	.
2019	66,300	75,200	.	38	.
2020	64,700	76,500	.	60	.
2021	67,100	77,400	.	51	.
2022	72,000	87,800	.	55	.

County: county value. Kansas: state value. County Rank: highest county value ranked #1. (\$000): thousands of dollars. Nonmetro Kansas: Kansas total less Metropolitan Areas as defined by the Office of Management and Budget (OMB; released 3/6/2020). Per 1000: For nonmoney amounts, Per 1000=(county value / county population for the same year as the data) x 1000. \$ Per capita=(county value / county population for the same year as the data). Value= . indicates missing or suppressed data or value not calculated.

**Income**

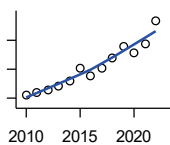
**HUD 30% LOW-TO-MEDIUM INCOME (LMI) LIMIT - 4 PERSONS**



U.S. Department of Housing and Urban Development (HUD)

Year	County	State of Kansas	Non Metro Kansas	County Rank	Per 1000 or \$ Per Capita
2010	15,850	.	.	105	.
2011	16,100	.	.	105	.
2012	16,300	.	.	105	.
2013	16,550	.	.	105	.
2014	23,850	.	.	105	.
2015	24,250	.	.	105	.
2016	24,300	.	.	105	.
2017	24,600	.	.	105	.
2018	25,100	21,950	.	105	.
2019	25,750	22,550	.	105	.
2020	26,200	22,950	.	105	.
2021	26,500	23,200	.	105	.
2022	27,750	25,950	.	105	.

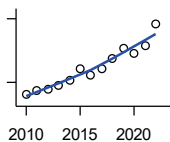
**HUD 50% LOW-TO-MEDIUM INCOME (LMI) LIMIT - 4 PERSONS**



U.S. Department of Housing and Urban Development (HUD)

Year	County	State of Kansas	Non Metro Kansas	County Rank	Per 1000 or \$ Per Capita
2010	26,400	.	.	105	.
2011	26,850	.	.	105	.
2012	27,200	.	.	105	.
2013	27,600	.	.	105	.
2014	28,450	.	.	62	.
2015	30,050	.	.	50	.
2016	29,100	.	.	55	.
2017	30,150	.	.	105	.
2018	31,600	36,550	.	52	.
2019	33,150	37,600	.	38	.
2020	32,350	38,250	.	60	.
2021	33,550	38,700	.	51	.
2022	36,700	43,300	.	57	.

**HUD 80% LOW-TO-MEDIUM INCOME (LMI) LIMIT - 4 PERSONS**



U.S. Department of Housing and Urban Development (HUD)

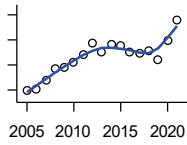
Year	County	State of Kansas	Non Metro Kansas	County Rank	Per 1000 or \$ Per Capita
2010	42,250	.	.	105	.
2011	42,950	.	.	105	.
2012	43,500	.	.	105	.
2013	44,150	.	.	105	.
2014	45,500	.	.	62	.
2015	48,100	.	.	50	.
2016	46,550	.	.	55	.
2017	48,250	.	.	105	.
2018	50,550	58,500	.	52	.
2019	53,050	60,150	.	38	.
2020	51,750	61,200	.	60	.
2021	53,700	61,900	.	51	.
2022	58,700	69,250	.	57	.

County: county value. Kansas: state value. County Rank: highest county value ranked #1. (\$000): thousands of dollars. Nonmetro Kansas: Kansas total less Metropolitan Areas as defined by the Office of Management and Budget (OMB; released 3/6/2020). Per 1000: For nonmoney amounts, Per 1000=(county value / county population for the same year as the data) x 1000. \$ Per capita=(county value / county population for the same year as the data). Value= . indicates missing or suppressed data or value not calculated.



**Banking**

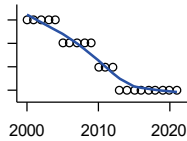
**BANK DEPOSITS** (1984-2004 in thousands; 2005- in millions)



Federal Deposit Insurance Corporation, Data Book, Operating Banks and Branches

Year	County	State of Kansas	Non Metro Kansas	County Rank	Per 1000 or \$ Per Capita
2005	120	48,304	17,000	65	26.8
2006	121	50,668	17,586	67	27.3
2007	128	54,057	18,517	66	28.7
2008	137	57,869	19,628	67	31.1
2009	138	57,763	20,031	67	31.2
2010	142	60,031	20,678	68	32.0
2011	148	61,094	21,347	69	33.8
2012	157	62,910	22,481	70	36.1
2013	150	64,547	22,795	72	34.6
2014	156	66,538	23,338	71	36.4
2015	155	68,160	23,367	71	36.8
2016	150	70,381	23,420	72	35.8
2017	149	73,329	23,928	73	35.6
2018	151	74,623	24,100	72	36.3
2019	144	76,436	24,488	74	34.6
2020	159	88,563	27,547	75	39.0
2021	176	97,055	30,122	76	43.6

**NUMBER OF BANKS**



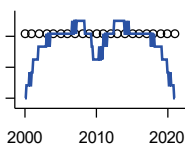
Federal Deposit Insurance Corporation, Data Book, Operating Banks and Branches

Year	County	State of Kansas	Non Metro Kansas	County Rank	Per 1000 or \$ Per Capita
2000	6	410	145	54	.
2001	6	410	136	53	.
2002	6	404	129	52	.
2003	6	397	121	52	.
2004	6	394	112	52	.
2005	5	388	101	60	.
2006	5	385	94	60	.
2007	5	382	91	60	.
2008	5	378	82	60	.
2009	5	374	79	60	.
2010	4	367	70	73	.
2011	4	359	61	74	.
2012	4	348	57	74	.
2013	3	332	45	92	.
2014	3	329	41	91	.
2015	3	320	31	90	.
2016	3	314	24	88	.
2017	3	301	13	88	.
2018	3	289	7	88	.
2019	3	279	3	88	.
2020	3	271	-1	88	.
2021	3	270	-6	88	.

County: county value. Kansas: state value. County Rank: highest county value ranked #1. (\$000): thousands of dollars. Nonmetro Kansas: Kansas total less Metropolitan Areas as defined by the Office of Management and Budget (OMB; released 3/6/2020). Per 1000: For nonmoney amounts, Per 1000=(county value / county population for the same year as the data) x 1000. \$ Per capita=(county value / county population for the same year as the data). Value= . indicates missing or suppressed data or value not calculated.

**Banking**

**NUMBER OF BANKING OFFICES**

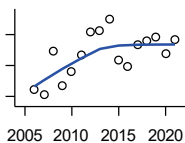


Federal Deposit Insurance Corporation, Data Book, Operating Banks and Branches

Year	County	State of Kansas	Non Metro Kansas	County Rank	Per 1000 or \$ Per Capita
2000	6	1,398	703	68	.
2001	6	1,424	708	68	.
2002	6	1,447	704	67	.
2003	6	1,461	708	67	.
2004	6	1,485	708	68	.
2005	6	1,505	711	67	.
2006	6	1,518	711	66	.
2007	6	1,543	717	66	.
2008	6	1,556	717	66	.
2009	6	1,569	716	66	.
2010	6	1,561	710	66	.
2011	6	1,559	707	66	.
2012	6	1,533	702	66	.
2013	6	1,518	696	66	.
2014	6	1,491	685	67	.
2015	6	1,472	675	67	.
2016	6	1,465	668	66	.
2017	6	1,452	666	66	.
2018	6	1,439	660	66	.
2019	6	1,439	663	64	.
2020	6	1,416	653	63	.
2021	6	1,392	641	62	.

**Government**

**TANGIBLE ASSESSED VALUATION (KDoR, million\$; 2006-)**



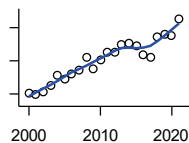
Kansas Department of Revenue, Division of Property Valuation, Statistical Report of Property Assessment and Taxation

Year	County	State of Kansas	Non Metro Kansas	County Rank	Per 1000 or \$ Per Capita
2006	72.3	28,964.3	10,316.9	62	16.3
2007	70.4	30,086.9	10,335.9	64	15.8
2008	84.5	31,000.3	10,856.9	58	19.2
2009	73.4	30,312.3	10,555.6	63	16.6
2010	78.1	29,450.2	10,158.7	60	17.6
2011	83.4	29,963.6	10,572.3	60	19.0
2012	90.9	30,382.9	10,876.2	61	20.9
2013	91.4	30,850.2	11,044.4	59	21.1
2014	95.0	31,783.0	11,388.9	59	22.2
2015	81.8	32,335.7	11,037.8	67	19.4
2016	79.6	33,156.3	10,889.6	67	19.0
2017	86.7	34,754.5	11,439.0	65	20.7
2018	87.9	36,566.1	11,907.1	66	21.1
2019	89.1	38,255.2	12,336.7	68	21.4
2020	84.0	39,333.9	12,219.3	69	20.6
2021	88.5	40,812.0	12,601.5	68	21.9

County: county value. Kansas: state value. County Rank: highest county value ranked #1. (\$000): thousands of dollars. Nonmetro Kansas: Kansas total less Metropolitan Areas as defined by the Office of Management and Budget (OMB; released 3/6/2020). Per 1000: For nonmoney amounts, Per 1000=(county value / county population for the same year as the data) x 1000. \$ Per capita=(county value / county population for the same year as the data). Value= . indicates missing or suppressed data or value not calculated.

**Government**

**SALES TAX COLLECTIONS (\$)**

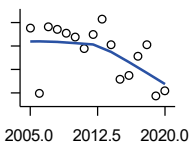


Kansas Department of Revenue. Use tax collections included beginning in calendar year 2018.

Year	County	State of Kansas	Non Metro Kansas	County Rank	Per 1000 or \$ Per Capita
2000	1,026,045	1,475,831,808	432,761,608	81	214,250.4
2001	983,204	1,481,026,688	426,316,284	81	208,173.6
2002	1,061,713	1,561,316,864	443,986,950	81	228,522.0
2003	1,246,370	1,626,782,976	461,658,700	78	273,386.7
2004	1,556,463	1,691,899,008	480,309,725	72	348,357.9
2005	1,461,725	1,744,980,352	497,494,867	77	326,788.5
2006	1,603,698	1,851,694,720	532,233,047	76	361,193.2
2007	1,720,416	1,917,546,752	559,319,583	77	385,743.5
2008	2,100,190	1,990,655,744	589,725,773	70	476,882.4
2009	1,775,015	1,866,223,078	548,627,132	75	401,405.5
2010	2,013,577	2,075,193,413	617,409,982	77	453,815.0
2011	2,249,840	2,347,193,367	702,671,534	80	513,662.1
2012	2,276,261	2,456,292,294	740,196,106	81	523,278.5
2013	2,497,815	2,489,204,048	746,226,565	79	575,666.1
2014	2,545,867	2,539,886,774	760,474,019	77	594,689.8
2015	2,456,567	2,642,374,740	750,090,163	76	582,815.3
2016	2,191,721	2,732,611,350	749,030,133	80	523,583.7
2017	2,118,634	2,726,104,521	744,246,491	79	506,123.6
2018	2,730,611	3,277,299,125	893,564,480	80	656,081.4
2019	2,797,943	3,395,631,405	939,607,762	80	673,229.9
2020	2,776,882	3,489,306,791	984,218,931	80	681,945.5
2021	3,266,774	3,981,293,227	1,098,391,422	77	809,810.1

**Crime**

**CRIME INDEX OFFENSES**



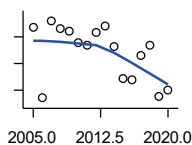
Kansas Bureau of Investigation, Note: Data are aggregated from reports by individual police departments and subject to be incomplete.

Year	County	State of Kansas	Non Metro Kansas	County Rank	Per 1000 or \$ Per Capita
2005	75	111,856	31,630	68	16.8
2006	20	110,032	.	90	4.5
2007	76	111,035	29,921	66	17.0
2008	74	93,996	27,342	66	16.8
2009	71	98,757	27,620	66	16.1
2010	68	98,354	26,909	65	15.3
2011	58	96,638	25,765	68	13.2
2012	70	98,914	26,963	67	16.1
2013	83	93,054	24,488	64	19.1
2014	61	86,323	23,341	71	14.2
2015	32	88,590	21,580	79	7.6
2016	35	90,589	21,565	75	8.4
2017	51	93,091	22,622	71	12.2
2018	61	92,062	20,325	66	14.7
2019	17	87,008	18,547	88	4.1
2020	22	87,346	17,762	84	5.4

County: county value. Kansas: state value. County Rank: highest county value ranked #1. (\$000): thousands of dollars. Nonmetro Kansas: Kansas total less Metropolitan Areas as defined by the Office of Management and Budget (OMB; released 3/6/2020). Per 1000: For nonmoney amounts, Per 1000=(county value / county population for the same year as the data) x 1000. \$ Per capita=(county value / county population for the same year as the data). Value= . indicates missing or suppressed data or value not calculated.

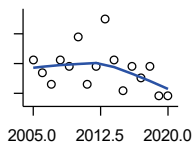
**Crime**

**PROPERTY CRIMES**



Kansas Bureau of Investigation, Note: Data are aggregated from reports by individual police departments and subject to be incomplete.

Year	County	State of Kansas	Non Metro Kansas	County Rank	Per 1000 or \$ Per Capita
2005	67	101,414	29,042	67	15.0
2006	14	99,110	.	93	3.2
2007	72	99,632	26,856	65	16.1
2008	66	83,964	24,367	67	15.0
2009	64	87,658	24,825	66	14.5
2010	56	87,926	24,133	66	12.6
2011	54	86,547	23,274	66	12.3
2012	63	88,707	24,220	65	14.5
2013	68	83,551	22,028	67	15.7
2014	53	76,794	20,858	71	12.4
2015	29	77,997	19,138	78	6.9
2016	28	79,549	19,207	77	6.7
2017	46	81,349	19,981	71	11.0
2018	54	79,695	17,769	66	13.0
2019	15	74,314	15,892	87	3.6
2020	20	73,450	15,100	82	4.9



**VIOLENT CRIMES**

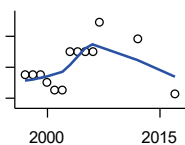
Kansas Bureau of Investigation, Note: Data are aggregated from reports by individual police departments and subject to be incomplete.

Year	County	State of Kansas	Non Metro Kansas	County Rank	Per 1000 or \$ Per Capita
2005	8	10,442	2,588	66	1.8
2006	6	10,922	.	67	1.4
2007	4	11,403	3,065	77	0.9
2008	8	10,032	2,975	68	1.8
2009	7	11,099	2,795	70	1.6
2010	12	10,428	2,776	56	2.7
2011	4	10,091	2,491	79	0.9
2012	7	10,207	2,743	70	1.6
2013	15	9,503	2,460	52	3.5
2014	8	9,529	2,483	68	1.9
2015	3	10,593	2,442	86	0.7
2016	7	11,040	2,358	64	1.7
2017	5	11,742	2,641	73	1.2
2018	7	12,367	2,556	64	1.7
2019	2	12,694	2,655	94	0.5
2020	2	13,896	2,662	94	0.5

County: county value. Kansas: state value. County Rank: highest county value ranked #1. (\$000): thousands of dollars. Nonmetro Kansas: Kansas total less Metropolitan Areas as defined by the Office of Management and Budget (OMB; released 3/6/2020). Per 1000: For nonmoney amounts, Per 1000=(county value / county population for the same year as the data) x 1000. \$ Per capita=(county value / county population for the same year as the data). Value= . indicates missing or suppressed data or value not calculated.

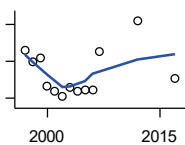
**Agriculture**

**NUMBER OF FARMS**



Kansas Agricultural Statistics, Kansas Farm Facts

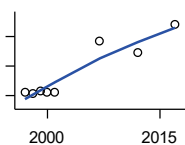
Year	County	State of Kansas	Non Metro Kansas	County Rank	Per 1000 or \$ Per Capita
1997	490	64,000	47,900	68	98.6
1998	490	65,000	48,850	68	99.5
1999	490	65,000	48,850	68	100.7
2000	480	64,000	48,030	68	100.2
2001	470	63,000	47,200	68	99.5
2002	470	63,000	47,200	68	101.2
2003	520	64,500	48,150	55	114.1
2004	520	64,500	48,150	55	116.4
2005	520	64,500	48,150	55	116.3
2006	520	64,000	47,650	55	117.1
2007	558	65,531	48,179	46	125.1
2012	536	61,773	45,655	46	123.2
2017	466	58,569	42,404	52	111.3



**TOTAL ACRES HARVESTED**

Kansas Agricultural Statistics, Kansas Farm Facts

Year	County	State of Kansas	Non Metro Kansas	County Rank	Per 1000 or \$ Per Capita
1997	295,820	22,846,000	19,430,580	20	59,497.2
1998	289,400	22,143,500	18,943,650	16	58,737.6
1999	291,500	21,708,900	18,581,750	17	59,917.8
2000	276,820	21,639,000	18,528,870	21	57,803.3
2001	274,020	21,847,900	18,689,750	21	58,018.2
2002	271,100	20,230,400	17,089,120	19	58,351.3
2003	276,120	21,827,700	18,661,920	20	60,565.9
2004	273,530	20,876,900	17,721,500	18	61,219.8
2005	274,600	21,936,500	18,807,930	23	61,390.6
2006	274,410	21,412,700	18,291,120	22	61,804.1
2007	295,532	19,886,655	17,164,743	11	66,262.8
2012	311,999	21,043,596	17,966,843	10	71,723.9
2017	280,693	21,837,465	18,543,057	19	67,055.2



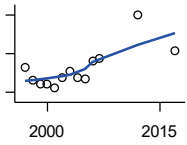
**VALUE: LIVESTOCK AND POULTRY (\$000)**

Kansas Agricultural Statistics, Kansas Farm Facts

Year	County	State of Kansas	Non Metro Kansas	County Rank	Per 1000 or \$ Per Capita
1997	24,411	2,806,445	2,500,305	35	4,909.7
1998	22,634	2,670,432	2,378,007	39	4,593.9
1999	26,480	2,849,061	2,554,528	36	5,443.0
2000	24,804	2,901,469	2,609,032	37	5,179.4
2001	24,883	2,693,274	2,437,187	33	5,268.5
2007	93,215	9,525,971	.	25	20,900.2
2012	77,402	11,476,571	10,883,216	33	17,793.6
2017	116,092	12,322,289	.	26	27,733.4

County: county value. Kansas: state value. County Rank: highest county value ranked #1. (\$000): thousands of dollars. Nonmetro Kansas: Kansas total less Metropolitan Areas as defined by the Office of Management and Budget (OMB; released 3/6/2020). Per 1000: For nonmoney amounts, Per 1000=(county value / county population for the same year as the data) x 1000. \$ Per capita=(county value / county population for the same year as the data). Value= . indicates missing or suppressed data or value not calculated.

**Agriculture**



VALUE:FIELD CROPS (\$000)  
EXCLUDING GOVERNMENT  
PROGRAM PAYMENTS

Kansas Agricultural Statistics, Kansas  
Farm Facts

Year	County	State of Kansas	Non Metro Kansas	County Rank	Per 1000 or \$ Per Capita
1997	65,185	4,474,942	3,800,365	14	13,110.4
1998	52,928	3,594,319	3,124,409	16	10,742.4
1999	48,980	3,118,193	2,728,319	15	10,067.8
2000	49,024	2,915,660	2,540,052	13	10,236.8
2001	44,698	3,283,117	2,857,136	22	9,463.9
2002	55,318	3,011,855	2,560,580	9	11,906.6
2003	61,679	3,623,255	3,150,629	12	13,529.1
2004	54,776	3,445,688	2,896,603	14	12,259.6
2005	54,193	3,678,123	3,182,677	17	12,115.6
2006	71,830	4,308,716	3,684,132	13	16,177.9
2007	74,613	4,887,212	.	15	16,729.4
2012	120,219	6,983,993	6,044,551	13	27,636.6
2017	82,480	6,460,437	.	23	19,703.8

County: county value. Kansas: state value. County Rank: highest county value ranked #1. (\$000): thousands of dollars. Nonmetro Kansas: Kansas total less Metropolitan Areas as defined by the Office of Management and Budget (OMB; released 3/6/2020). Per 1000: For nonmoney amounts, Per 1000=(county value / county population for the same year as the data) x 1000. \$ Per capita=(county value / county population for the same year as the data). Value= . indicates missing or suppressed data or value not calculated.