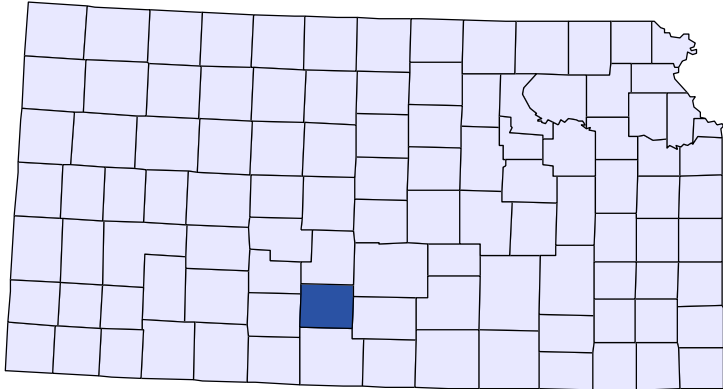




Kansas County Profiles

Pratt County



The University
of Kansas

Institute for Policy
& Social Research

KU INSTITUTE FOR POLICY
& SOCIAL RESEARCH

The University of Kansas

1541 Lilac Lane, Rm. 607
Blake Hall
Lawrence, KS 66045-3129

Foreword

The Kansas County Profile Report is published by the Institute for Policy & Social Research (IPSR) at the University of Kansas with support from the KU University Center project.* Special thanks to Xanthippe Wedel, senior research data engineer, who compiles and updates the county profiles and Genna Hurd, associate researcher, who provides editorial review.

County reports can be generated for any county in Kansas by simply clicking on the county from the web site:

<https://ipsr.ku.edu/ksdata/kcced/profiles/>

The Kansas County Profile Report contains 12 categories of information: Population, Vital Statistics and Health, Housing, Education, Social Environment, Business, Employment, Income, Banking, Government, Crime, and Agriculture. For more information about Kansas, please refer to the Kansas Statistical Abstract, available online at:

<https://ipsr.ku.edu/ksdata/ksah/>

We are always looking for ways to improve the Kansas County Profile Report and we welcome your suggestions and comments. Please address any correspondence to the Institute for Policy & Social Research, The University of Kansas, 607 Blake Hall, 1541 Lilac Lane, Lawrence, Kansas 66045-3129, e-mail ipsr@ku.edu or call 785-864-3701.

**The KU University Center is a collaborative effort led by the Institute for Policy & Social Research at the University of Kansas. This project is supported by the Economic Development Administration, U.S. Department of Commerce, through its University Center Program.*

The mission of EDA is to lead the federal economic development agenda by promoting innovation and competitiveness, preparing American regions for growth and success in the worldwide economy.

Kansas County Profiles Table of Contents

Population	
Total Population (Decennial Census)	1
Estimated Population (Current Population Reports)	2
Urban Population	2
Rural Population	3
Net Migration (Decade Ending...)	3
Median Age	3
Population (Age Groups)	
Population Under 18 (Decennial Census)	3
Population Age 18 and Over (Decennial Census)	4
Population Age 65 and Over (Decennial Census)	4
Population Age 85 and Over (Decennial Census)	4
Vital Statistics and Health	
Live Births	5
Deaths	5
Marriages	6
Divorces and Annulments	6
Physicians: M.D. Physicians	7
Physicians: D.O. Physicians	7
Dentists	8
Number of Hospitals	8
Number of Hospital Beds	9
Housing	
Housing Units (Decennial Census)	9
Housing Units (Estimated)	10
Occupied Housing Units	10
Owner Occupied Housing Units	10
Renter Occupied Housing Units	11
Vacant Housing Units	11
Median Value (\$): Owner Occupied Housing Units	11
Median Contract Rent (\$)	12
Fair Market Rent: 2 Bedrooms	12
Education	
Population Age 25 and Over	13
Percent of Population 25+ with High School or Higher Education	13
Percent of Population 25+ with Bachelors Degree or Higher Education	14
Public School Enrollment (FTE- School Year Beginning...)	14
Pupil/Teacher Ratio (School Year Beginning...)	15

Kansas County Profiles Table of Contents

Social Environment

Total Child Care Facilities	15
Preschools	16
Food Stamp Beneficiaries	16
Percent of Population Receiving Food Stamps	17
Estimated Number of People in Poverty	17
Estimated Percent of People in Poverty	18
Estimated Number of Related Children Age 5 to 17 in Families in Poverty	18
Estimated Percent of Related Children Age 5 to 17 in Families in Poverty	19
Estimated Number Under 18 in Poverty	19
Estimated Percent Under 18 in Poverty	20

Business

Establishments: Total	21
Establishments: 1-19 Employees	22
Establishments: 20-99 Employees	22
Establishments: 100-499 Employees	23
Establishments: 500 or More Employees	23
Establishments: Forestry, Fishing, Hunting, and Ag Support	24
Establishments: Mining	24
Establishments: Utilities	25
Establishments: Construction	25
Establishments: Manufacturing	26
Establishments: Wholesale Trade	26
Establishments: Retail Trade	27
Establishments: Transportation and Warehousing	27
Establishments: Information	28
Establishments: Finance and Insurance	28
Establishments: Real Estate, Rental, and Leasing	29
Establishments: Professional, Scientific, and Technical Services	29
Establishments: Management of Companies and Enterprises	30
Establishments: Admin, Support, Waste Management, and Remediation	30
Establishments: Educational Services	31
Establishments: Health Care and Social Assistance	31
Establishments: Arts, Entertainment, and Recreation	32
Establishments: Accommodation and Food Services	32
Establishments: Other Services	33

Kansas County Profiles Table of Contents

Business	
Total Annual Payroll (\$000)	34
Total Annual Payroll (\$000): Forestry, Fishing, Hunting, and Ag Support	35
Total Annual Payroll (\$000): Mining	35
Total Annual Payroll (\$000): Utilities	36
Total Annual Payroll (\$000): Construction	36
Total Annual Payroll (\$000): Manufacturing	37
Total Annual Payroll (\$000): Wholesale Trade	37
Total Annual Payroll (\$000): Retail Trade	38
Total Annual Payroll (\$000): Transportation and Warehousing	38
Total Annual Payroll (\$000): Information	39
Total Annual Payroll (\$000): Finance and Insurance	39
Total Annual Payroll (\$000): Real Estate, Rental, and Leasing	40
Total Annual Payroll (\$000): Professional, Scientific, and Technical Services	40
Total Annual Payroll (\$000): Management of Companies and Enterprises	41
Total Annual Payroll (\$000): Admin, Support, Waste Management, and Remediation	41
Total Annual Payroll (\$000): Educational Services	42
Total Annual Payroll (\$000): Health Care and Social Assistance	42
Total Annual Payroll (\$000): Arts, Entertainment, and Recreation	43
Total Annual Payroll (\$000): Accommodation and Food Services	43
Total Annual Payroll (\$000): Other Services	44
Nominal Taxable Retail Sales (Million\$)	44
Retail Pull Factor	45
Employment	
Civilian Labor Force (BLS - Place of Residence)	46
Employed (BLS - Place of Residence)	47
Unemployed (BLS - Place of Residence)	48
Unemployment Rate (BLS - Place of Residence)	49
BEA Employment: Total (Place of Work)	49
BEA Employment: Farm	50
BEA Employment: Non-Farm	50
Average Wage per Job (\$)	51
BEA Employment: Forestry, Fishing, Hunting, and Ag Support	51
BEA Employment: Mining	52
BEA Employment: Utilities	52
BEA Employment: Construction	53
BEA Employment: Manufacturing	53
BEA Employment: Wholesale Trade	54
BEA Employment: Retail Trade	54
BEA Employment: Transportation and Warehousing	55
BEA Employment: Information	55
BEA Employment: Finance and Insurance	56
BEA Employment: Real Estate, Rental, and Leasing	56
BEA Employment: Professional and Technical Services	57
BEA Employment: Management of Companies and Enterprises	57
BEA Employment: Administrative and Waste Services	58
BEA Employment: Educational Services	58
BEA Employment: Health Care and Social Assistance	59
BEA Employment: Arts, Entertainment, and Recreation	59
BEA Employment: Government and Government Enterprises	60
BEA Employment: Accommodation and Food Services	60
BEA Employment: Other Services, Except Public Administration	61

Kansas County Profiles Table of Contents

Income

BEA Per Capita Personal Income (\$)	61
Sources of Personal Income: Total Personal Income (\$000)	62
Sources of Personal Income: Wages And Salaries (\$000)	62
Sources of Personal Income: Proprietors-Farm (\$000)	63
Sources of Personal Income: Proprietors-Nonfarm (\$000)	63
Sources of Personal Income: Dividends, Interest, Rent (\$000)	64
Sources of Personal Income: Transfer Payments (\$000)	64
Sources of Personal Income: Less Social Insurance (\$000)	65
HUD Median Family Income	65
HUD 30% Low-To-Medium Income (LMI) Limit - 4 Persons	66
HUD 50% Low-To-Medium Income (LMI) Limit - 4 Persons	66
HUD 80% Low-To-Medium Income (LMI) Limit - 4 Persons	66

Banking

Bank Deposits (\$000)	67
Number of Banks	67
Number of Banking Offices	68

Government

Tangible Assessed Valuation (million\$)	68
Sales Tax Collections	69

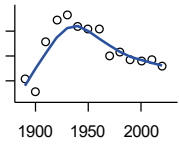
Crime

Crime Index Offenses	69
Property Crimes	70
Violent Crimes	70

Agriculture

Number of Farms	71
Total Acres Harvested	71
Value: Livestock and Poultry (\$000)	71
Value: Field Crops (\$000) Excluding Government Program Payments	72

Population



DECENNIAL CENSUS:TOTAL POPULATION

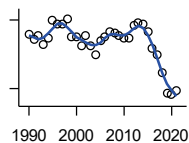
U.S. Census Bureau: Decennial Census

Year	County	State of Kansas	Non Metro Kansas	County Rank	Per 1000 or \$ Per Capita
1890	8,118	1,427,096	968,413	67	.
1900	7,085	1,470,495	981,206	70	.
1910	11,156	1,690,949	1,138,294	64	.
1920	12,909	1,769,257	1,153,525	54	.
1930	13,312	1,880,999	1,180,056	52	.
1940	12,348	1,801,028	1,097,216	48	.
1950	12,156	1,905,299	1,046,823	44	.
1960	12,122	2,178,611	1,021,510	41	.
1970	10,056	2,246,578	958,104	44	.
1980	10,275	2,363,679	980,085	44	.
1990	9,702	2,477,574	939,416	44	.
2000	9,647	2,688,418	959,507	44	.
2010	9,656	2,853,118	929,981	43	.
2020	9,157	2,937,880	892,006	43	.

County: county value. Kansas: state value. County Rank: highest county value ranked #1. (\$000): thousands of dollars. Nonmetro Kansas: Kansas total less Metropolitan Areas as defined by the Office of Management and Budget (OMB; released 3/6/2020). Per 1000: For nonmoney amounts, Per 1000=(county value / county population for the same year as the data) x 1000. \$ Per capita=(county value / county population for the same year as the data). Value= . indicates missing or suppressed data or value not calculated.

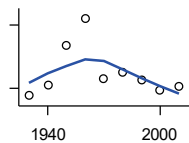
Population

ESTIMATED POPULATION



U.S. Census Bureau

Year	County	State of Kansas	Non Metro Kansas	County Rank	Per 1000 or \$ Per Capita
1990	9,671	2,481,349	938,607	44	.
1991	9,630	2,498,722	938,965	44	.
1992	9,659	2,532,394	942,759	44	.
1993	9,581	2,556,547	947,515	44	.
1994	9,643	2,580,513	952,178	44	.
1995	9,803	2,601,007	957,771	44	.
1996	9,763	2,614,554	959,455	44	.
1997	9,769	2,635,292	960,225	44	.
1998	9,810	2,660,598	960,569	44	.
1999	9,650	2,678,338	960,704	44	.
2000	9,649	2,693,681	959,230	44	.
2001	9,579	2,702,162	952,607	45	.
2002	9,669	2,713,535	945,985	45	.
2003	9,575	2,723,004	941,474	45	.
2004	9,492	2,734,373	937,623	45	.
2005	9,618	2,745,299	932,852	45	.
2006	9,658	2,762,931	928,809	44	.
2007	9,698	2,783,785	927,643	44	.
2008	9,684	2,808,076	926,248	43	.
2009	9,669	2,832,704	926,755	43	.
2010	9,641	2,858,190	930,028	42	.
2011	9,644	2,869,225	927,675	42	.
2012	9,758	2,885,257	925,152	42	.
2013	9,778	2,893,212	922,383	42	.
2014	9,768	2,900,475	917,854	42	.
2015	9,697	2,909,011	912,199	42	.
2016	9,557	2,910,844	905,099	43	.
2017	9,500	2,908,718	897,981	43	.
2018	9,340	2,911,359	892,656	43	.
2019	9,164	2,913,314	887,455	43	.
2020	9,151	2,935,880	889,750	43	.
2021	9,181	2,934,582	886,438	43	.



URBAN POPULATION

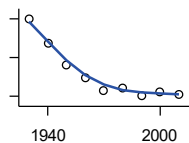
U.S. Census Bureau: Decennial Census

Year	County	State of Kansas	Non Metro Kansas	County Rank	Per 1000 or \$ Per Capita
1930	6,322	729,834	336,666	30	.
1940	6,591	753,941	349,228	30	.
1950	7,523	993,220	398,923	31	.
1960	8,156	1,328,741	457,447	32	.
1970	6,736	1,484,870	450,543	33	.
1980	6,885	1,575,899	474,769	33	.
1990	6,687	1,712,564	464,205	32	.
2000	6,448	1,920,081	488,011	32	.
2010	6,546	2,116,961	485,780	33	.

County: county value. Kansas: state value. County Rank: highest county value ranked #1. (\$000): thousands of dollars. Nonmetro Kansas: Kansas total less Metropolitan Areas as defined by the Office of Management and Budget (OMB; released 3/6/2020). Per 1000: For nonmoney amounts, Per 1000=(county value / county population for the same year as the data) x 1000. \$ Per capita=(county value / county population for the same year as the data). Value= . indicates missing or suppressed data or value not calculated.

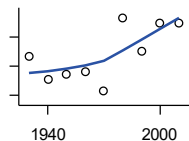
Population

RURAL POPULATION



U.S. Census Bureau

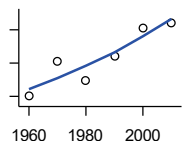
Year	County	State of Kansas	Non Metro Kansas	County Rank	Per 1000 or \$ Per Capita
1930	6,990	1,151,165	843,390	76	.
1940	5,757	1,047,087	747,988	81	.
1950	4,633	912,079	647,900	84	.
1960	3,966	849,870	564,063	85	.
1970	3,320	761,708	509,972	89	.
1980	3,390	787,780	505,873	86	.
1990	3,015	765,010	475,211	88	.
2000	3,199	768,337	471,900	80	.
2010	3,110	736,157	444,201	71	.



NET MIGRATION: DECADE ENDING...

calculated by the Institute for Policy and Social Research, The University of Kansas

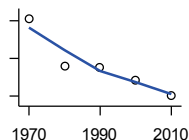
Year	County	State of Kansas	Non Metro Kansas	County Rank	Per 1000 or \$ Per Capita
1930	-1,155	-66,132	-101,869	57	-86.8
1940	-1,938	-192,649	-166,022	57	-156.9
1950	-1,794	-84,329	-158,379	55	-147.6
1960	-1,712	-38,999	-146,640	63	-141.2
1970	-2,367	-119,662	-105,116	91	-235.4
1980	141	-21,983	-6,184	33	13.7
1990	-971	-61,835	-79,274	72	-100.1
2000	-18	68,960	4,247	53	-1.9
2010	2	5,578	-50,648	18	0.2



MEDIAN AGE

U.S. Census Bureau: Decennial Census

Year	County	State of Kansas	Non Metro Kansas	County Rank	Per 1000 or \$ Per Capita
1960	32.1	26.9	.	61	.
1970	36.2	28.7	.	43	.
1980	33.9	30.1	.	52	.
1990	36.8	32.9	.	53	.
2000	40.2	35.2	.	44	.
2010	40.9	36.0	.	60	.



POPULATION UNDER 18 (DECENNIAL CENSUS)

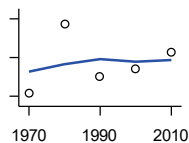
U.S. Census Bureau: Decennial Census

Year	County	State of Kansas	Non Metro Kansas	County Rank	Per 1000 or \$ Per Capita
1970	3,022	746,354	306,227	45	.
1980	2,520	649,035	263,919	47	.
1990	2,498	661,614	250,107	44	.
2000	2,364	712,993	250,757	47	.
2010	2,205	726,939	229,213	45	.

County: county value. Kansas: state value. County Rank: highest county value ranked #1. (\$000): thousands of dollars. Nonmetro Kansas: Kansas total less Metropolitan Areas as defined by the Office of Management and Budget (OMB; released 3/6/2020). Per 1000: For nonmoney amounts, Per 1000=(county value / county population for the same year as the data) x 1000. \$ Per capita=(county value / county population for the same year as the data). Value= . indicates missing or suppressed data or value not calculated.

Population

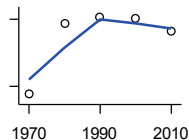
**POPULATION AGE 18 AND OVER
(DECENNIAL CENSUS)**



U.S. Census Bureau: Decennial Census

Year	County	State of Kansas	Non Metro Kansas	County Rank	Per 1000 or \$ Per Capita
1970	7,034	1,500,224	654,288	43	.
1980	7,752	1,714,282	716,684	44	.
1990	7,204	1,815,960	689,309	44	.
2000	7,283	1,975,425	709,154	44	.
2010	7,451	2,126,179	700,768	41	.

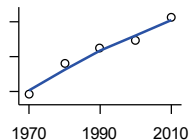
**POPULATION AGE 65 AND OVER
(DECENNIAL CENSUS)**



U.S. Census Bureau: Decennial Census

Year	County	State of Kansas	Non Metro Kansas	County Rank	Per 1000 or \$ Per Capita
1970	1,682	266,201	149,049	46	.
1980	1,840	306,263	164,932	46	.
1990	1,855	342,571	168,579	47	.
2000	1,851	356,229	161,769	44	.
2010	1,822	376,116	154,214	43	.

**POPULATION AGE 85 AND OVER
(DECENNIAL CENSUS)**



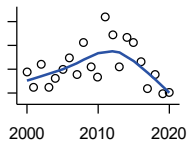
U.S. Census Bureau: Decennial Census

Year	County	State of Kansas	Non Metro Kansas	County Rank	Per 1000 or \$ Per Capita
1970	141	23,899	13,698	55	.
1980	230	33,455	18,804	43	.
1990	274	42,241	22,970	44	.
2000	295	51,770	26,644	46	.
2010	363	59,318	26,197	37	.

County: county value. Kansas: state value. County Rank: highest county value ranked #1. (\$000): thousands of dollars. Nonmetro Kansas: Kansas total less Metropolitan Areas as defined by the Office of Management and Budget (OMB; released 3/6/2020). Per 1000: For nonmoney amounts, Per 1000=(county value / county population for the same year as the data) x 1000. \$ Per capita=(county value / county population for the same year as the data). Value= . indicates missing or suppressed data or value not calculated.

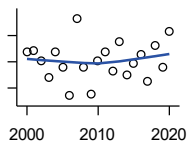
Vital Statistics and Health

BIRTHS (LIVE)



Kansas Department of Health and Environment

Year	County	State of Kansas	Non Metro Kansas	County Rank	Per 1000 or \$ Per Capita
2000	118	39,654	12,980	44	12.2
2001	105	38,832	12,527	44	11.0
2002	124	39,338	12,476	41	12.8
2003	105	39,353	12,342	47	11.0
2004	112	39,553	12,398	45	11.8
2005	120	39,701	12,382	39	12.5
2006	130	40,896	12,726	41	13.5
2007	115	41,951	12,990	46	11.9
2008	142	41,815	12,970	39	14.7
2009	122	41,388	12,949	41	12.6
2010	113	40,439	12,200	45	11.7
2011	164	39,628	12,098	35	17.0
2012	149	40,304	12,217	37	15.3
2013	122	38,805	11,877	42	12.5
2014	147	39,193	12,052	38	15.0
2015	142	39,126	11,836	38	14.6
2016	126	38,048	11,467	38	13.2
2017	104	36,464	10,968	46	10.9
2018	116	36,268	10,826	41	12.4
2019	99	35,395	10,506	44	10.8
2020	100	34,368	10,222	45	10.9



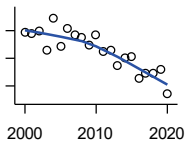
DEATHS

Kansas Department of Health and Environment

Year	County	State of Kansas	Non Metro Kansas	County Rank	Per 1000 or \$ Per Capita
2000	128	24,676	11,175	44	13.3
2001	129	24,590	10,807	47	13.5
2002	121	24,968	11,079	47	12.5
2003	108	24,417	10,615	47	11.3
2004	128	23,720	10,369	43	13.5
2005	116	24,632	10,599	47	12.1
2006	94	24,489	10,538	53	9.7
2007	153	24,413	10,601	38	15.8
2008	116	24,896	10,593	45	12.0
2009	95	23,997	9,938	50	9.8
2010	121	24,428	10,105	42	12.5
2011	128	25,114	10,520	42	13.3
2012	113	25,084	10,259	45	11.6
2013	135	25,347	10,249	37	13.8
2014	110	25,731	10,275	45	11.3
2015	119	26,611	10,539	41	12.3
2016	126	26,129	10,231	40	13.2
2017	105	26,725	10,452	47	11.1
2018	132	27,213	10,389	42	14.1
2019	116	27,312	10,569	43	12.7
2020	143	31,667	11,850	43	15.6

County: county value. Kansas: state value. County Rank: highest county value ranked #1. (\$000): thousands of dollars. Nonmetro Kansas: Kansas total less Metropolitan Areas as defined by the Office of Management and Budget (OMB; released 3/6/2020). Per 1000: For nonmoney amounts, Per 1000=(county value / county population for the same year as the data) x 1000. \$ Per capita=(county value / county population for the same year as the data). Value= . indicates missing or suppressed data or value not calculated.

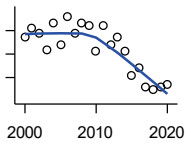
Vital Statistics and Health



MARRIAGES

Kansas Department of Health and Environment

Year	County	State of Kansas	Non Metro Kansas	County Rank	Per 1000 or \$ Per Capita
2000	79	20,426	7,333	39	8.2
2001	78	20,457	7,441	39	8.1
2002	80	19,783	6,794	38	8.3
2003	66	18,722	6,469	43	6.9
2004	89	19,174	6,756	35	9.4
2005	69	18,745	6,481	40	7.2
2006	82	18,836	6,433	36	8.5
2007	77	18,910	6,464	38	7.9
2008	75	18,717	6,283	37	7.7
2009	70	18,268	6,015	36	7.2
2010	77	18,150	5,925	39	8.0
2011	65	17,897	5,977	39	6.7
2012	66	18,154	5,752	39	6.8
2013	55	17,328	5,533	45	5.6
2014	60	17,655	5,535	40	6.1
2015	61	17,595	5,400	39	6.3
2016	45	17,948	5,340	48	4.7
2017	49	17,274	5,163	44	5.2
2018	49	16,362	4,999	46	5.2
2019	52	15,403	4,650	40	5.7
2020	34	14,038	4,066	51	3.7



DIVORCES AND ANNULMENTS

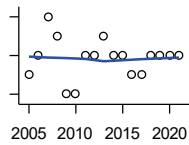
Kansas Department of Health and Environment

Year	County	State of Kansas	Non Metro Kansas	County Rank	Per 1000 or \$ Per Capita
2000	37	10,105	4,000	46	3.8
2001	41	9,885	3,818	41	4.3
2002	39	9,645	3,716	41	4.0
2003	32	8,644	3,464	45	3.3
2004	43	8,759	3,506	37	4.5
2005	34	8,476	3,311	40	3.5
2006	46	9,145	3,387	34	4.8
2007	39	9,347	3,402	36	4.0
2008	43	9,818	3,655	38	4.4
2009	42	10,333	3,463	36	4.3
2010	31	10,579	3,530	48	3.2
2011	42	10,445	3,347	38	4.4
2012	34	9,782	3,040	41	3.5
2013	37	9,085	2,973	37	3.8
2014	31	8,441	2,682	39	3.2
2015	21	8,036	2,704	49	2.2
2016	24	7,198	2,424	44	2.5
2017	16	6,494	2,315	50	1.7
2018	15	6,538	2,269	54	1.6
2019	16	6,398	2,357	52	1.7
2020	17	5,169	1,866	48	1.9

County: county value. Kansas: state value. County Rank: highest county value ranked #1. (\$000): thousands of dollars. Nonmetro Kansas: Kansas total less Metropolitan Areas as defined by the Office of Management and Budget (OMB; released 3/6/2020). Per 1000: For nonmoney amounts, Per 1000=(county value / county population for the same year as the data) x 1000. \$ Per capita=(county value / county population for the same year as the data). Value= . indicates missing or suppressed data or value not calculated.

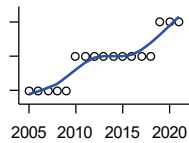
Vital Statistics and Health

PHYSICIANS: M.D. PHYSICIANS



Kansas Department of Health and Environment (1981-2005,2010-);Kansas Health Policy Authority (2006-2009)

Year	County	State of Kansas	Non Metro Kansas	County Rank	Per 1000 or \$ Per Capita
2005	11	4,241	912	34	1.1
2006	12	4,310	953	31	1.2
2007	14	5,309	1,046	31	1.4
2008	13	5,110	1,016	33	1.3
2009	10	5,249	996	36	1.0
2010	10	5,192	979	37	1.0
2011	12	5,243	983	33	1.2
2012	12	5,693	1,033	34	1.2
2013	13	6,106	1,071	36	1.3
2014	12	5,839	951	33	1.2
2015	12	5,703	855	33	1.2
2016	11	4,278	643	28	1.2
2017	11	6,332	1,047	36	1.2
2018	12	6,079	1,065	34	1.3
2019	12	6,435	1,036	33	1.3
2020	12	6,668	1,045	33	1.3
2021	12	6,745	1,042	33	1.3



PHYSICIANS: D.O. PHYSICIANS

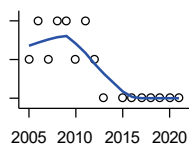
Kansas Department of Health and Environment (1981-2005,2010-);Kansas Health Policy Authority (2006-2009)

Year	County	State of Kansas	Non Metro Kansas	County Rank	Per 1000 or \$ Per Capita
2005	0	553	174	105	0.0
2006	0	508	171	105	0.0
2007	0	569	169	105	0.0
2008	0	558	166	105	0.0
2009	0	564	160	105	0.0
2010	1	583	169	66	0.1
2011	1	502	152	62	0.1
2012	1	718	200	67	0.1
2013	1	829	210	65	0.1
2014	1	817	189	62	0.1
2015	1	819	190	63	0.1
2016	1	632	136	58	0.1
2017	1	579	129	57	0.1
2018	1	871	164	64	0.1
2019	2	951	212	42	0.2
2020	2	1,018	204	42	0.2
2021	2	1,095	217	47	0.2

County: county value. Kansas: state value. County Rank: highest county value ranked #1. (\$000): thousands of dollars. Nonmetro Kansas: Kansas total less Metropolitan Areas as defined by the Office of Management and Budget (OMB; released 3/6/2020). Per 1000: For nonmoney amounts, Per 1000=(county value / county population for the same year as the data) x 1000. \$ Per capita=(county value / county population for the same year as the data). Value= . indicates missing or suppressed data or value not calculated.

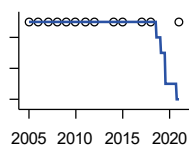
Vital Statistics and Health

DENTISTS



Kansas Department of Health and Environment (1981-2006,2010-); Kansas Health Policy Authority (2007-2009)

Year	County	State of Kansas	Non Metro Kansas	County Rank	Per 1000 or \$ Per Capita
2005	5	1,347	363	37	0.5
2006	6	1,381	361	30	0.6
2007	5	1,335	350	33	0.5
2008	6	1,392	353	30	0.6
2009	6	1,353	350	30	0.6
2010	5	1,401	365	36	0.5
2011	6	1,338	346	31	0.6
2012	5	1,434	392	39	0.5
2013	4	1,212	328	40	0.4
2015	4	1,240	327	40	0.4
2016	4	1,456	350	39	0.4
2017	4	1,467	350	40	0.4
2018	4	1,604	359	39	0.4
2019	4	1,646	355	38	0.4
2020	4	1,646	355	38	0.4
2021	4	1,688	362	39	0.4



NUMBER OF HOSPITALS

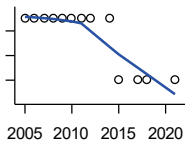
American Hospital Association, American Hospital Association Guide to the Health Care Field

Year	County	State of Kansas	Non Metro Kansas	County Rank	Per 1000 or \$ Per Capita
2005	1	158	105	96	.
2006	1	158	105	96	.
2007	1	159	104	95	.
2008	1	159	104	95	.
2009	1	158	105	96	.
2010	1	158	104	96	.
2011	1	158	103	96	.
2012	1	157	103	96	.
2014	1	156	.	96	.
2015	1	155	103	96	.
2017	1	157	102	96	.
2018	1	154	99	95	.
2021	1	151	.	95	.

County: county value. Kansas: state value. County Rank: highest county value ranked #1. (\$000): thousands of dollars. Nonmetro Kansas: Kansas total less Metropolitan Areas as defined by the Office of Management and Budget (OMB; released 3/6/2020). Per 1000: For nonmoney amounts, Per 1000=(county value / county population for the same year as the data) x 1000. \$ Per capita=(county value / county population for the same year as the data). Value= . indicates missing or suppressed data or value not calculated.

Vital Statistics and Health

NUMBER OF HOSPITAL BEDS

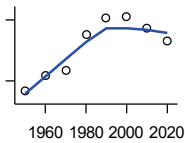


Kansas Department of Health and Environment

Year	County	State of Kansas	Non Metro Kansas	County Rank	Per 1000 or \$ Per Capita
2005	85	12,389	5,687	36	8.8
2006	85	11,992	5,514	36	8.8
2007	85	12,171	5,637	35	8.8
2008	85	12,332	5,700	35	8.8
2009	85	12,283	5,652	35	8.8
2010	85	12,218	5,521	31	8.8
2011	85	12,182	5,335	30	8.8
2012	85	12,002	5,355	30	8.7
2014	85	12,034	.	31	8.7
2015	80	11,926	5,330	30	8.2
2017	80	11,491	4,825	27	8.4
2018	80	11,448	4,583	29	8.6
2021	80	11,199	.	25	8.7

Housing

HOUSING UNITS (DECENNIAL)



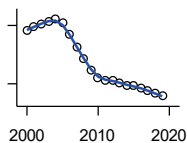
U.S. Census Bureau: Decennial Census

Year	County	State of Kansas	Non Metro Kansas	County Rank	Per 1000 or \$ Per Capita
1950	3,904	586,650	328,210	44	321.2
1960	4,050	672,899	329,380	40	334.1
1970	4,099	789,735	363,824	42	407.6
1980	4,450	955,207	416,877	44	433.1
1990	4,620	1,044,112	417,062	43	476.2
2000	4,633	1,131,395	422,218	43	480.3
2010	4,514	1,233,215	424,050	45	467.5
2020	4,388	1,275,689	413,120	44	479.2

County: county value. Kansas: state value. County Rank: highest county value ranked #1. (\$000): thousands of dollars. Nonmetro Kansas: Kansas total less Metropolitan Areas as defined by the Office of Management and Budget (OMB; released 3/6/2020). Per 1000: For nonmoney amounts, Per 1000=(county value / county population for the same year as the data) x 1000. \$ Per capita=(county value / county population for the same year as the data). Value= . indicates missing or suppressed data or value not calculated.

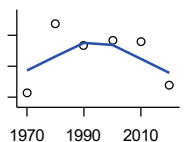
Housing

HOUSING UNITS (ESTIMATED)



U.S. Census Bureau

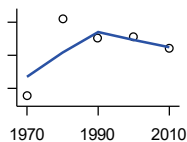
Year	County	State of Kansas	Non Metro Kansas	County Rank	Per 1000 or \$ Per Capita
2000	4,638	1,134,529	422,560	43	480.8
2001	4,647	1,146,858	423,876	43	485.1
2002	4,655	1,160,129	425,089	43	481.4
2003	4,661	1,171,620	425,936	43	486.8
2004	4,667	1,184,702	426,593	43	491.7
2005	4,657	1,195,791	426,964	43	484.2
2006	4,626	1,206,692	426,713	43	479.0
2007	4,594	1,217,608	426,090	43	473.7
2008	4,565	1,225,625	425,768	44	471.4
2009	4,534	1,230,552	424,776	45	468.9
2010	4,514	1,234,456	424,174	45	467.5
2011	4,509	1,238,052	424,549	45	467.5
2012	4,509	1,241,992	425,116	45	462.1
2013	4,503	1,246,675	425,699	45	460.5
2014	4,496	1,253,284	426,269	45	460.3
2015	4,494	1,258,999	426,844	45	463.4
2016	4,489	1,265,684	427,465	45	469.7
2017	4,482	1,273,536	427,746	45	471.8
2018	4,475	1,280,649	428,099	45	479.1
2019	4,468	1,288,401	428,495	45	487.6



OCCUPIED HOUSING UNITS

U.S. Census Bureau: Decennial Census

Year	County	State of Kansas	Non Metro Kansas	County Rank	Per 1000 or \$ Per Capita
1970	3,628	727,364	326,494	43	360.8
1980	4,078	872,239	371,693	43	396.9
1990	3,937	944,726	365,901	44	405.8
2000	3,963	1,037,891	375,313	43	410.8
2010	3,956	1,112,096	370,269	42	409.7
2020	3,677	1,151,360	356,330	43	401.6



OWNER OCCUPIED HOUSING UNITS

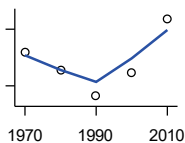
U.S. Census Bureau: Decennial Census

Year	County	State of Kansas	Non Metro Kansas	County Rank	Per 1000 or \$ Per Capita
1970	2,553	502,585	236,338	46	253.9
1980	3,021	612,433	277,096	44	294.0
1990	2,908	641,762	263,099	44	299.7
2000	2,909	718,703	271,350	45	301.5
2010	2,845	753,532	261,763	44	294.6

County: county value. Kansas: state value. County Rank: highest county value ranked #1. (\$000): thousands of dollars. Nonmetro Kansas: Kansas total less Metropolitan Areas as defined by the Office of Management and Budget (OMB; released 3/6/2020). Per 1000: For nonmoney amounts, Per 1000=(county value / county population for the same year as the data) x 1000. \$ Per capita=(county value / county population for the same year as the data). Value= . indicates missing or suppressed data or value not calculated.

Housing

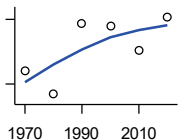
RENTER OCCUPIED HOUSING UNITS



U.S. Census Bureau: Decennial Census

Year	County	State of Kansas	Non Metro Kansas	County Rank	Per 1000 or \$ Per Capita
1970	1,075	224,779	90,156	37	106.9
1980	1,057	259,806	94,597	38	102.9
1990	1,029	302,964	102,802	40	106.1
2000	1,054	319,188	103,963	37	109.3
2010	1,111	358,564	108,506	38	115.1

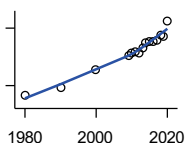
VACANT HOUSING UNITS



U.S. Census Bureau: Decennial Census

Year	County	State of Kansas	Non Metro Kansas	County Rank	Per 1000 or \$ Per Capita
1970	460	60,058	35,954	39	45.7
1980	352	77,912	41,584	61	34.3
1990	683	99,386	51,161	39	70.4
2000	670	93,309	46,904	35	69.5
2010	558	121,119	53,781	53	57.8
2020	711	124,329	56,790	41	77.6

MEDIAN VALUE (\$): OWNER OCCUPIED HOUSING UNITS



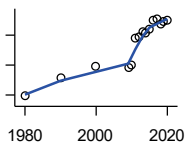
U.S. Census Bureau, Decennial Census (- 2000), (2009 -) American Community Survey five-year average ending in year shown.

Year	County	State of Kansas	Non Metro Kansas	County Rank	Per 1000 or \$ Per Capita
1980	29,300	37,800	.	44	.
1990	37,500	52,200	.	40	.
2000	56,600	83,500	.	43	.
2009	71,300	118,500	.	56	.
2010	74,500	122,600	.	58	.
2011	74,700	125,500	.	58	.
2012	73,600	127,400	.	60	.
2013	79,000	128,400	.	54	.
2014	84,300	129,400	.	47	.
2015	85,900	132,000	.	52	.
2016	86,300	135,300	.	52	.
2017	87,600	139,200	.	53	.
2018	93,200	145,400	.	53	.
2019	91,900	151,900	.	57	.
2020	107,500	157,600	.	39	.

County: county value. Kansas: state value. County Rank: highest county value ranked #1. (\$000): thousands of dollars. Nonmetro Kansas: Kansas total less Metropolitan Areas as defined by the Office of Management and Budget (OMB; released 3/6/2020). Per 1000: For nonmoney amounts, Per 1000=(county value / county population for the same year as the data) x 1000. \$ Per capita=(county value / county population for the same year as the data). Value= . indicates missing or suppressed data or value not calculated.

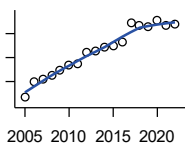
Housing

MEDIAN CONTRACT RENT (\$)



U.S. Census Bureau, Decennial Census (- 2000), (2009 -) American Community Survey five-year average ending in year shown.

Year	County	State of Kansas	Non Metro Kansas	County Rank	Per 1000 or \$ Per Capita
1980	192	219	.	25	.
1990	313	372	.	22	.
2000	389	498	.	44	.
2009	383	491	.	28	.
2010	402	507	.	31	.
2011	584	699	.	32	.
2012	586	715	.	42	.
2013	626	732	.	33	.
2014	617	748	.	44	.
2015	638	757	.	36	.
2016	697	775	.	18	.
2017	709	801	.	21	.
2018	672	831	.	38	.
2019	692	850	.	33	.
2020	697	863	.	35	.



FAIR MARKET RENT: 2 BEDROOMS

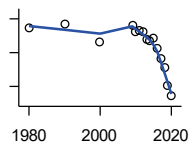
U.S. Department of Housing and Urban Development (HUD)

Year	County	State of Kansas	Non Metro Kansas	County Rank	Per 1000 or \$ Per Capita
2005	433	.	.	95	.
2006	497	.	.	105	.
2007	512	.	.	105	.
2008	525	628	.	105	.
2009	547	653	.	105	.
2010	566	678	.	105	.
2011	575	684	.	105	.
2012	620	660	.	26	.
2013	628	712	.	30	.
2014	646	746	.	36	.
2015	650	756	.	38	.
2016	664	781	.	40	.
2017	743	811	.	29	.
2018	736	815	.	33	.
2019	729	828	.	29	.
2020	756	855	.	29	.
2021	732	874	.	33	.
2022	742	879	.	105	.

County: county value. Kansas: state value. County Rank: highest county value ranked #1. (\$000): thousands of dollars. Nonmetro Kansas: Kansas total less Metropolitan Areas as defined by the Office of Management and Budget (OMB; released 3/6/2020). Per 1000: For nonmoney amounts, Per 1000=(county value / county population for the same year as the data) x 1000. \$ Per capita=(county value / county population for the same year as the data). Value= . indicates missing or suppressed data or value not calculated.

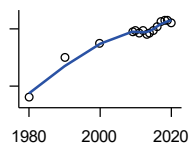
Education

POPULATION AGE 25+



U.S. Census Bureau, Decennial Census (- 2000), (2009 -) American Community Survey five-year average ending in year shown.

Year	County	State of Kansas	Non Metro Kansas	County Rank	Per 1000 or \$ Per Capita
1980	6,443	1,388,102	596,639	.	.
1990	6,472	1,565,936	608,745	.	.
2000	6,365	1,701,207	618,131	.	.
2009	6,458	1,775,427	600,188	.	.
2010	6,427	1,802,904	608,716	.	.
2011	6,433	1,822,400	610,386	.	.
2012	6,423	1,838,079	611,103	.	.
2013	6,376	1,850,010	610,374	.	.
2014	6,367	1,861,894	609,612	.	.
2015	6,383	1,869,698	606,967	.	.
2016	6,328	1,878,495	604,563	.	.
2017	6,265	1,886,741	601,076	.	.
2018	6,210	1,894,675	598,487	.	.
2019	6,102	1,902,279	595,501	.	.
2020	6,042	1,911,990	593,923	.	.



PERCENT HS GRADUATE OR HIGHER AGE 25+

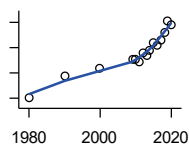
U.S. Census Bureau, Decennial Census (- 2000), (2009 -) American Community Survey five-year average ending in year shown.

Year	County	State of Kansas	Non Metro Kansas	County Rank	Per 1000 or \$ Per Capita
1980	72.0	73.3	.	32	.
1990	82.4	81.3	.	15	.
2000	86.3	86.0	.	32	.
2009	89.1	89.0	.	46	.
2010	89.5	89.2	.	49	.
2011	88.9	89.5	.	57	.
2012	89.5	89.7	.	58	.
2013	88.6	89.8	.	73	.
2014	89.0	90.0	.	71	.
2015	89.7	90.2	.	66	.
2016	90.6	90.3	.	58	.
2017	91.8	90.5	.	46	.
2018	92.2	90.7	.	39	.
2019	92.1	91.0	.	48	.
2020	91.7	91.4	.	59	.

County: county value. Kansas: state value. County Rank: highest county value ranked #1. (\$000): thousands of dollars. Nonmetro Kansas: Kansas total less Metropolitan Areas as defined by the Office of Management and Budget (OMB; released 3/6/2020). Per 1000: For nonmoney amounts, Per 1000=(county value / county population for the same year as the data) x 1000. \$ Per capita=(county value / county population for the same year as the data). Value= . indicates missing or suppressed data or value not calculated.

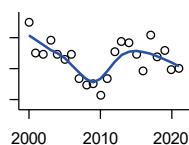
Education

PERCENT BACHELORS DEGREE OR HIGHER AGE 25+



U.S. Census Bureau, Decennial Census (- 2000), (2009 -) American Community Survey five-year average ending in year shown.

Year	County	State of Kansas	Non Metro Kansas	County Rank	Per 1000 or \$ Per Capita
1980	15.1	17.0	.	18	.
1990	19.5	21.1	.	10	.
2000	21.0	25.8	.	18	.
2009	22.7	28.8	.	17	.
2010	22.7	29.3	.	20	.
2011	22.2	29.7	.	24	.
2012	23.9	30.0	.	18	.
2013	23.4	30.3	.	24	.
2014	24.4	30.7	.	20	.
2015	25.9	31.0	.	18	.
2016	25.5	31.6	.	24	.
2017	26.4	32.3	.	22	.
2018	28.1	32.9	.	17	.
2019	30.3	33.4	.	12	.
2020	29.5	33.9	.	15	.



PUBLIC SCHOOL ENROLLMENT (FTE) SCHOOL YEAR BEGINNING...

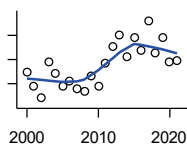
Kansas State Department of Education

Year	County	State of Kansas	Non Metro Kansas	County Rank	Per 1000 or \$ Per Capita
2000	1,650.0	448,150.8	166,722.5	46	171.0
2001	1,549.5	447,047.1	164,365.0	47	161.8
2002	1,545.3	444,860.3	161,555.4	47	159.8
2003	1,592.8	443,620.6	159,130.2	46	166.3
2004	1,546.1	441,957.2	156,566.3	46	162.9
2005	1,530.3	442,708.4	155,197.2	46	159.1
2006	1,547.9	444,878.7	153,842.3	45	160.3
2007	1,467.8	446,831.3	152,337.1	47	151.4
2008	1,447.4	447,730.0	150,572.7	46	149.5
2009	1,451.8	453,202.5	151,246.8	46	150.1
2010	1,413.8	455,405.0	151,023.8	47	146.4
2011	1,465.9	456,000.5	150,257.9	45	152.0
2012	1,553.9	458,496.4	150,463.0	44	159.2
2013	1,588.0	461,950.0	150,420.9	43	162.4
2014	1,581.7	464,395.4	150,499.4	43	161.9
2015	1,544.4	463,504.0	149,539.3	43	159.3
2016	1,492.5	459,920.3	147,293.5	43	156.2
2017	1,608.0	477,977.9	152,096.3	43	169.3
2018	1,539.8	476,481.7	150,456.8	44	164.9
2019	1,559.7	476,525.1	150,045.2	43	170.2
2020	1,496.2	462,088.0	146,369.6	44	163.4
2021	1,499.3	463,652.4	147,500.4	45	163.3

County: county value. Kansas: state value. County Rank: highest county value ranked #1. (\$000): thousands of dollars. Nonmetro Kansas: Kansas total less Metropolitan Areas as defined by the Office of Management and Budget (OMB; released 3/6/2020). Per 1000: For nonmoney amounts, Per 1000=(county value / county population for the same year as the data) x 1000. \$ Per capita=(county value / county population for the same year as the data). Value= . indicates missing or suppressed data or value not calculated.

Education

PUPIL/TEACHER RATIO SCHOOL YEAR BEGINNING...

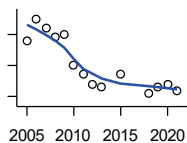


Kansas State Department of Education

Year	County	State of Kansas	Non Metro Kansas	County Rank	Per 1000 or \$ Per Capita
2000	14.5	15.4	13.9	30	.
2001	13.9	15.3	13.8	39	.
2002	13.4	15.4	13.9	45	.
2003	14.9	15.5	13.8	24	.
2004	14.4	15.3	13.6	26	.
2005	13.9	15.0	13.4	29	.
2006	14.1	14.7	13.2	26	.
2007	13.8	14.6	13.1	27	.
2008	13.7	14.4	12.9	24	.
2009	14.3	14.8	13.2	24	.
2010	13.9	15.2	13.6	34	.
2011	14.8	15.1	13.5	22	.
2012	15.5	15.1	13.5	11	.
2013	16.0	15.1	13.5	8	.
2014	15.1	15.0	13.6	16	.
2015	15.9	15.2	13.9	11	.
2016	15.4	15.1	13.7	14	.
2017	16.6	15.5	13.9	13	.
2018	15.3	15.3	13.8	17	.
2019	15.9	15.2	13.7	11	.
2020	14.9	14.7	13.4	15	.
2021	14.9	14.8	13.5	17	.

Social Environment

CHILD CARE FACILITIES: TOTAL CHILD CARE FACILITIES

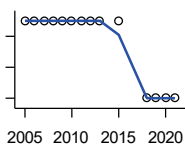


Kansas Department of Health and Environment, Bureau of Adult and Child Care

Year	County	State of Kansas	Non Metro Kansas	County Rank	Per 1000 or \$ Per Capita
2005	33	8,258	3,378	46	3.4
2006	40	8,442	3,429	40	4.1
2007	37	8,241	3,317	41	3.8
2008	34	8,011	3,150	44	3.5
2009	35	7,853	3,066	43	3.6
2010	25	7,354	2,858	54	2.6
2011	22	6,835	2,623	54	2.3
2012	19	6,346	2,409	56	1.9
2013	18	5,754	2,179	55	1.8
2015	22	5,289	2,146	49	2.3
2018	16	4,607	1,904	60	1.7
2019	18	4,287	1,774	49	2.0
2020	19	4,274	1,798	49	2.1
2021	17	4,002	1,700	51	1.9

County: county value. Kansas: state value. County Rank: highest county value ranked #1. (\$000): thousands of dollars. Nonmetro Kansas: Kansas total less Metropolitan Areas as defined by the Office of Management and Budget (OMB; released 3/6/2020). Per 1000: For nonmoney amounts, Per 1000=(county value / county population for the same year as the data) x 1000. \$ Per capita=(county value / county population for the same year as the data). Value= . indicates missing or suppressed data or value not calculated.

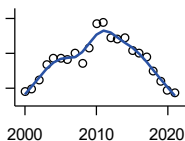
Social Environment



**CHILD CARE FACILITIES:
PRESCHOOLS**

Kansas Department of Health and Environment, Bureau of Adult and Child Care

Year	County	State of Kansas	Non Metro Kansas	County Rank	Per 1000 or \$ Per Capita
2005	1	243	140	79	0.1
2006	1	221	127	76	0.1
2007	1	208	119	76	0.1
2008	1	204	114	73	0.1
2009	1	194	107	72	0.1
2010	1	194	112	73	0.1
2011	1	209	123	76	0.1
2012	1	201	121	74	0.1
2013	1	140	84	64	0.1
2015	1	185	113	71	0.1
2018	0	150	94	105	0.0
2019	0	134	83	105	0.0
2020	0	126	78	105	0.0
2021	0	120	74	105	0.0



FOOD STAMP BENEFICIARIES

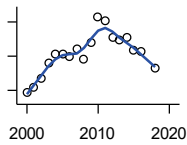
Kansas Social and Rehabilitation Services

Year	County	State of Kansas	Non Metro Kansas	County Rank	Per 1000 or \$ Per Capita
2000	378	110,619	44,825	47	39.2
2001	399	117,241	46,741	45	41.7
2002	446	131,726	52,342	45	46.1
2003	532	155,908	61,280	44	55.6
2004	569	167,971	65,852	44	59.9
2005	572	175,710	67,261	43	59.5
2006	563	182,821	67,487	43	58.3
2007	604	184,035	66,979	42	62.3
2008	546	187,377	67,160	46	56.4
2009	630	208,007	73,637	44	65.2
2010	772	259,609	90,919	44	80.0
2011	781	296,542	101,155	46	81.0
2012	690	303,257	102,478	47	70.7
2013	681	316,424	105,345	50	69.6
2014	692	301,377	100,761	49	70.8
2015	617	277,614	93,353	50	63.6
2016	598	258,412	88,343	49	62.6
2017	579	239,592	82,070	48	60.9
2018	497	219,738	75,208	50	53.2
2019	437	205,261	69,899	54	47.7
2020	386	198,457	66,721	54	42.2
2021	376	203,424	68,883	56	41.0

County: county value. Kansas: state value. County Rank: highest county value ranked #1. (\$000): thousands of dollars. Nonmetro Kansas: Kansas total less Metropolitan Areas as defined by the Office of Management and Budget (OMB; released 3/6/2020). Per 1000: For nonmoney amounts, Per 1000=(county value / county population for the same year as the data) x 1000. \$ Per capita=(county value / county population for the same year as the data). Value= . indicates missing or suppressed data or value not calculated.

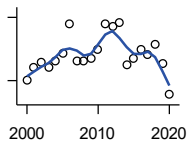
Social Environment

PERCENT OF POPULATION RECEIVING FOOD STAMPS



U.S. Dept. of Agriculture Food and Nutrition Service (1990-1997); Kansas Social and Rehabilitation Services (1998-)

Year	County	State of Kansas	Non Metro Kansas	County Rank	Per 1000 or \$ Per Capita
2000	3.9	4.1	.	43	.
2001	4.2	4.3	.	45	.
2002	4.7	4.9	.	42	.
2003	5.6	5.7	.	43	.
2004	6.1	6.2	.	42	.
2005	6.1	6.4	.	40	.
2006	6.0	6.6	.	43	.
2007	6.4	6.6	.	39	.
2008	5.8	6.7	.	42	.
2009	6.8	7.4	.	37	.
2010	8.3	9.1	.	37	.
2011	8.1	10.3	.	46	.
2012	7.1	10.5	.	59	.
2013	7.0	10.9	.	63	.
2014	7.1	10.4	.	60	.
2015	6.3	9.6	.	66	.
2016	6.2	8.9	.	63	.
2018	5.3	7.5	.	62	.



ESTIMATED NUMBER OF PEOPLE IN POVERTY

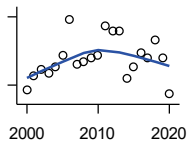
U.S. Census Bureau, Small Area Income and Poverty Estimates

Year	County	State of Kansas	Non Metro Kansas	County Rank	Per 1000 or \$ Per Capita
2000	903	235,087	98,984	47	93.6
2001	960	252,134	106,257	46	100.2
2002	986	265,673	107,542	45	102.0
2003	960	278,163	107,323	45	100.3
2004	996	297,733	111,534	45	104.9
2005	1,029	310,667	118,768	45	107.0
2006	1,168	327,102	123,700	43	120.9
2007	991	301,828	111,953	43	102.2
2008	994	307,804	113,015	46	102.6
2009	1,005	359,692	123,394	46	103.9
2010	1,045	374,677	131,502	47	108.2
2011	1,167	383,859	134,912	43	121.0
2012	1,160	392,095	133,800	44	118.9
2013	1,174	391,718	134,067	44	120.1
2014	974	381,506	130,213	48	99.7
2015	1,004	366,069	123,073	45	103.5
2016	1,048	343,773	121,314	43	109.7
2017	1,026	335,371	116,854	46	108.0
2018	1,074	336,892	114,490	43	115.0
2019	981	319,931	110,692	44	107.0
2020	833	300,931	100,998	46	91.0

County: county value. Kansas: state value. County Rank: highest county value ranked #1. (\$000): thousands of dollars. Nonmetro Kansas: Kansas total less Metropolitan Areas as defined by the Office of Management and Budget (OMB; released 3/6/2020). Per 1000: For nonmoney amounts, Per 1000=(county value / county population for the same year as the data) x 1000. \$ Per capita=(county value / county population for the same year as the data). Value= . indicates missing or suppressed data or value not calculated.

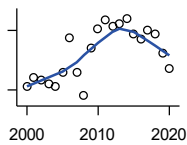
Social Environment

ESTIMATED % OF PEOPLE IN POVERTY



U.S. Census Bureau, Small Area Income and Poverty Estimates

Year	County	State of Kansas	Non Metro Kansas	County Rank	Per 1000 or \$ Per Capita
2000	9.8	8.9	.	62	.
2001	10.4	9.5	.	65	.
2002	10.7	10.0	.	63	.
2003	10.5	10.4	.	60	.
2004	10.8	11.1	.	53	.
2005	11.3	11.7	.	67	.
2006	12.9	12.2	.	44	.
2007	10.9	11.2	.	67	.
2008	11.0	11.3	.	63	.
2009	11.2	13.2	.	77	.
2010	11.3	13.5	.	74	.
2011	12.6	13.8	.	61	.
2012	12.4	14.0	.	58	.
2013	12.4	13.9	.	60	.
2014	10.3	13.5	.	91	.
2015	10.8	12.9	.	77	.
2016	11.4	12.2	.	68	.
2017	11.2	11.9	.	72	.
2018	12.0	11.9	.	57	.
2019	11.2	11.3	.	64	.
2020	9.6	10.6	.	85	.



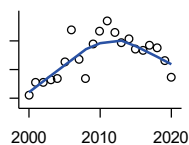
EST. NUMBER OF RELATED CHILDREN AGE 5 TO 17 IN FAMILIES IN POVERTY

U.S. Census Bureau, Small Area Income and Poverty Estimates

Year	County	State of Kansas	Non Metro Kansas	County Rank	Per 1000 or \$ Per Capita
2000	183	50,388	21,854	50	19.0
2001	193	53,755	23,094	48	20.1
2002	190	52,453	21,423	45	19.7
2003	186	55,419	21,809	46	19.4
2004	184	59,392	22,313	46	19.4
2005	198	60,203	24,244	47	20.6
2006	233	64,427	25,326	44	24.1
2007	198	61,149	23,639	44	20.4
2008	174	59,842	22,661	48	18.0
2009	222	71,850	26,251	45	23.0
2010	241	81,077	29,804	46	25.0
2011	251	82,311	29,306	44	26.0
2012	244	87,594	29,781	45	25.0
2013	247	84,325	29,253	44	25.3
2014	252	83,873	29,354	45	25.8
2015	236	78,192	27,482	44	24.3
2016	231	67,810	25,074	43	24.2
2017	240	67,873	25,032	42	25.3
2018	236	68,153	24,928	43	25.3
2019	217	64,613	23,117	43	23.7
2020	202	59,792	21,143	43	22.1

County: county value. Kansas: state value. County Rank: highest county value ranked #1. (\$000): thousands of dollars. Nonmetro Kansas: Kansas total less Metropolitan Areas as defined by the Office of Management and Budget (OMB; released 3/6/2020). Per 1000: For nonmoney amounts, Per 1000=(county value / county population for the same year as the data) x 1000. \$ Per capita=(county value / county population for the same year as the data). Value= . indicates missing or suppressed data or value not calculated.

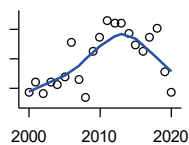
Social Environment



EST. % OF RELATED CHILDREN AGE 5 TO 17 IN FAMILIES IN POVERTY

U.S. Census Bureau, Small Area Income and Poverty Estimates

Year	County	State of Kansas	Non Metro Kansas	County Rank	Per 1000 or \$ Per Capita
2000	11.2	10.0	.	70	.
2001	12.1	10.8	.	65	.
2002	12.1	10.5	.	49	.
2003	12.3	11.3	.	56	.
2004	12.4	12.5	.	57	.
2005	13.5	12.8	.	63	.
2006	15.8	13.2	.	44	.
2007	13.7	12.6	.	59	.
2008	12.4	12.3	.	70	.
2009	14.8	14.7	.	62	.
2010	15.7	15.9	.	61	.
2011	16.4	16.2	.	52	.
2012	15.6	17.2	.	61	.
2013	14.9	16.5	.	66	.
2014	15.1	16.4	.	69	.
2015	14.4	15.3	.	68	.
2016	14.3	13.2	.	64	.
2017	14.7	13.4	.	61	.
2018	14.5	13.5	.	73	.
2019	13.6	12.9	.	68	.
2020	12.5	11.9	.	68	.



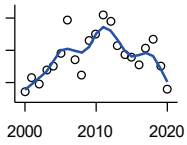
ESTIMATED NUMBER UNDER 18 IN POVERTY

U.S. Census Bureau, Small Area Income and Poverty Estimates

Year	County	State of Kansas	Non Metro Kansas	County Rank	Per 1000 or \$ Per Capita
2000	295	82,619	34,843	49	30.6
2001	309	87,487	36,724	47	32.3
2002	293	84,181	32,870	44	30.3
2003	308	93,896	36,004	45	32.2
2004	305	98,641	36,272	45	32.1
2005	316	100,254	39,118	47	32.9
2006	363	105,193	41,054	43	37.6
2007	312	100,242	37,881	43	32.2
2008	287	100,146	37,552	48	29.6
2009	350	118,187	42,682	46	36.2
2010	370	129,009	46,428	46	38.3
2011	392	133,478	46,832	44	40.6
2012	389	135,261	46,294	45	39.9
2013	389	131,251	44,952	44	39.8
2014	374	125,562	43,933	45	38.3
2015	359	119,994	41,828	45	37.0
2016	350	100,996	37,387	42	36.6
2017	370	102,858	37,955	41	38.9
2018	381	102,616	36,991	40	40.8
2019	322	97,920	34,797	43	35.1
2020	294	88,491	30,767	43	32.1

County: county value. Kansas: state value. County Rank: highest county value ranked #1. (\$000): thousands of dollars. Nonmetro Kansas: Kansas total less Metropolitan Areas as defined by the Office of Management and Budget (OMB; released 3/6/2020). Per 1000: For nonmoney amounts, Per 1000=(county value / county population for the same year as the data) x 1000. \$ Per capita=(county value / county population for the same year as the data). Value= . indicates missing or suppressed data or value not calculated.

Social Environment



ESTIMATED PERCENT UNDER 18 IN POVERTY

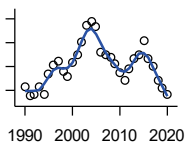
U.S. Census Bureau, Small Area Income and Poverty Estimates

Year	County	State of Kansas	Non Metro Kansas	County Rank	Per 1000 or \$ Per Capita
2000	13.4	11.9	.	68	.
2001	14.3	12.7	.	66	.
2002	13.9	12.1	.	45	.
2003	14.8	13.8	.	52	.
2004	15.0	14.6	.	53	.
2005	15.8	15.2	.	65	.
2006	17.9	15.4	.	42	.
2007	15.4	14.7	.	68	.
2008	14.5	14.6	.	71	.
2009	16.6	17.1	.	66	.
2010	17.0	18.1	.	65	.
2011	18.2	18.8	.	56	.
2012	17.8	19.0	.	54	.
2013	16.3	18.4	.	69	.
2014	15.7	17.6	.	71	.
2015	15.6	16.9	.	68	.
2016	15.1	14.3	.	69	.
2017	16.1	14.7	.	65	.
2018	16.7	14.8	.	59	.
2019	15.0	14.3	.	66	.
2020	13.6	13.0	.	64	.

County: county value. Kansas: state value. County Rank: highest county value ranked #1. (\$000): thousands of dollars. Nonmetro Kansas: Kansas total less Metropolitan Areas as defined by the Office of Management and Budget (OMB; released 3/6/2020). Per 1000: For nonmoney amounts, Per 1000=(county value / county population for the same year as the data) x 1000. \$ Per capita=(county value / county population for the same year as the data). Value= . indicates missing or suppressed data or value not calculated.

Business

ESTABLISHMENTS TOTAL COUNTY BUSINESS PATTERNS



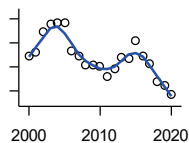
U.S. Census Bureau, County Business Patterns. Beginning with the 2017 data, any tabulation with fewer than 3 establishments were omitted from the release. Data for these establishments are included in the broader total.

Year	County	State of Kansas	Non Metro Kansas	County Rank	Per 1000 or \$ Per Capita
1990	363	65,858	26,802	31	37.4
1991	356	65,941	26,750	35	37.0
1992	357	67,630	27,229	37	37.0
1993	363	68,930	27,655	35	37.9
1994	357	69,822	27,763	37	37.0
1995	374	70,894	28,111	35	38.2
1996	381	72,017	28,353	35	39.0
1997	384	73,924	28,884	36	39.3
1998	376	74,019	28,749	36	38.3
1999	372	74,486	28,536	36	38.5
2000	383	74,939	28,475	36	39.7
2001	390	74,565	28,282	34	40.7
2002	401	75,077	28,183	31	41.5
2003	415	74,972	27,998	31	43.3
2004	418	75,827	28,009	30	44.0
2005	414	76,173	27,830	30	43.0
2006	392	76,446	27,653	33	40.6
2007	390	77,157	27,736	31	40.2
2008	388	76,096	27,314	32	40.1
2009	382	74,698	26,839	33	39.5
2010	375	74,301	26,739	32	38.8
2011	368	73,598	26,555	34	38.2
2012	378	73,944	26,534	31	38.7
2013	387	73,816	26,393	30	39.6
2014	390	74,055	26,292	30	39.9
2015	402	74,526	26,355	30	41.5
2016	387	74,884	26,172	30	40.5
2017	380	74,947	26,093	30	40.0
2018	368	74,559	25,802	31	39.4
2019	362	74,292	25,536	34	39.5
2020	357	73,982	25,178	32	39.0

County: county value. Kansas: state value. County Rank: highest county value ranked #1. (\$000): thousands of dollars. Nonmetro Kansas: Kansas total less Metropolitan Areas as defined by the Office of Management and Budget (OMB; released 3/6/2020). Per 1000: For nonmoney amounts, Per 1000=(county value / county population for the same year as the data) x 1000. \$ Per capita=(county value / county population for the same year as the data). Value= . indicates missing or suppressed data or value not calculated.

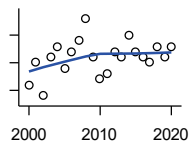
Business

**ESTABLISHMENTS: 1-19
EMPLOYEES**



U.S. Census Bureau, County Business Patterns. Beginning with the 2017 data, any tabulation with fewer than 3 establishments were omitted from the release. Data for these establishments are included in the broader total.

Year	County	State of Kansas	Non Metro Kansas	County Rank	Per 1000 or \$ Per Capita
2000	349	64,527	25,381	35	36.2
2001	352	64,176	25,248	32	36.7
2002	369	64,886	25,208	30	38.2
2003	376	64,714	25,020	30	39.3
2004	377	65,554	24,995	30	39.7
2005	377	65,796	24,839	30	39.2
2006	353	65,764	24,589	30	36.6
2007	349	66,446	24,701	32	36.0
2008	342	65,322	24,257	32	35.3
2009	342	64,128	23,851	32	35.4
2010	340	64,015	23,857	32	35.2
2011	332	63,251	23,571	32	34.4
2012	338	63,519	23,575	32	34.6
2013	348	63,197	23,396	31	35.6
2014	347	63,113	23,229	31	35.5
2015	362	63,280	23,227	30	37.3
2016	349	63,630	23,117	30	36.5
2017	343	63,619	23,022	31	36.1
2018	328	63,233	22,745	31	35.1
2019	324	62,904	22,489	32	35.4
2020	317	62,634	22,173	33	34.6



**ESTABLISHMENTS: 20-99
EMPLOYEES**

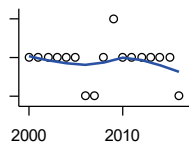
U.S. Census Bureau, County Business Patterns. Beginning with the 2017 data, any tabulation with fewer than 3 establishments were omitted from the release. Data for these establishments are included in the broader total.

Year	County	State of Kansas	Non Metro Kansas	County Rank	Per 1000 or \$ Per Capita
2000	31	8,714	2,653	36	3.2
2001	35	8,692	2,593	34	3.7
2002	29	8,582	2,554	36	3.0
2003	36	8,642	2,568	34	3.8
2004	38	8,658	2,590	34	4.0
2005	34	8,685	2,553	33	3.5
2006	37	8,922	2,612	34	3.8
2007	39	8,938	2,574	32	4.0
2008	43	8,939	2,587	30	4.4
2009	36	8,848	2,551	31	3.7
2010	32	8,612	2,454	34	3.3
2011	33	8,668	2,540	34	3.4
2012	37	8,700	2,500	31	3.8
2013	36	8,870	2,541	32	3.7
2014	40	9,121	2,590	32	4.1
2015	37	9,374	2,664	33	3.8
2016	36	9,412	2,596	33	3.8
2017	35	9,487	2,638	33	3.7
2018	38	9,485	2,621	31	4.1
2019	36	9,485	2,591	32	3.9
2020	38	9,471	2,545	31	4.1

County: county value. Kansas: state value. County Rank: highest county value ranked #1. (\$000): thousands of dollars. Nonmetro Kansas: Kansas total less Metropolitan Areas as defined by the Office of Management and Budget (OMB; released 3/6/2020). Per 1000: For nonmoney amounts, Per 1000=(county value / county population for the same year as the data) x 1000. \$ Per capita=(county value / county population for the same year as the data). Value= . indicates missing or suppressed data or value not calculated.

Business

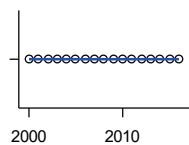
**ESTABLISHMENTS: 100-499
EMPLOYEES**



U.S. Census Bureau, County Business Patterns. Beginning with the 2017 data, any tabulation with fewer than 3 establishments were omitted from the release. Data for these establishments are included in the broader total.

Year	County	State of Kansas	Non Metro Kansas	County Rank	Per 1000 or \$ Per Capita
2000	3	1,555	409	47	0.3
2001	3	1,555	406	45	0.3
2002	3	1,464	386	46	0.3
2003	3	1,470	378	46	0.3
2004	3	1,463	388	47	0.3
2005	3	1,537	400	46	0.3
2006	2	1,598	407	64	0.2
2007	2	1,602	416	63	0.2
2008	3	1,653	421	48	0.3
2009	4	1,551	394	40	0.4
2010	3	1,513	382	48	0.3
2011	3	1,523	395	45	0.3
2012	3	1,567	410	47	0.3
2013	3	1,581	407	49	0.3
2014	3	1,641	421	52	0.3
2015	3	1,693	414	49	0.3
2016	2	1,671	406	60	0.2

**ESTABLISHMENTS: 500 OR MORE
EMPLOYEES**

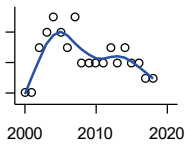


U.S. Census Bureau, County Business Patterns. Beginning with the 2017 data, any tabulation with fewer than 3 establishments were omitted from the release. Data for these establishments are included in the broader total.

Year	County	State of Kansas	Non Metro Kansas	County Rank	Per 1000 or \$ Per Capita
2000	0	143	32	105	0.0
2001	0	142	35	105	0.0
2002	0	145	35	105	0.0
2003	0	146	32	105	0.0
2004	0	152	36	105	0.0
2005	0	155	38	105	0.0
2006	0	162	45	105	0.0
2007	0	171	45	105	0.0
2008	0	182	49	105	0.0
2009	0	171	43	105	0.0
2010	0	161	46	105	0.0
2011	0	156	49	105	0.0
2012	0	158	49	105	0.0
2013	0	168	49	105	0.0
2014	0	180	52	105	0.0
2015	0	179	50	105	0.0
2016	0	171	53	105	0.0

County: county value. Kansas: state value. County Rank: highest county value ranked #1. (\$000): thousands of dollars. Nonmetro Kansas: Kansas total less Metropolitan Areas as defined by the Office of Management and Budget (OMB; released 3/6/2020). Per 1000: For nonmoney amounts, Per 1000=(county value / county population for the same year as the data) x 1000. \$ Per capita=(county value / county population for the same year as the data). Value= . indicates missing or suppressed data or value not calculated.

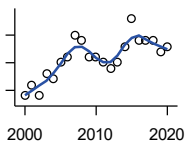
Business



ESTABLISHMENTS: FORESTRY, FISHING, HUNTING, AND AG SUPPORT

U.S. Census Bureau, County Business Patterns. Beginning with the 2017 data, any tabulation with fewer than 3 establishments were omitted from the release. Data for these establishments are included in the broader total.

Year	County	State of Kansas	Non Metro Kansas	County Rank	Per 1000 or \$ Per Capita
2000	3	190	149	25	0.3
2001	3	217	168	32	0.3
2002	6	224	176	6	0.6
2003	7	217	173	6	0.7
2004	8	211	165	5	0.8
2005	7	188	148	5	0.7
2006	6	193	158	6	0.6
2007	8	212	170	3	0.8
2008	5	197	158	9	0.5
2009	5	191	154	8	0.5
2010	5	192	161	9	0.5
2011	5	193	157	9	0.5
2012	6	204	164	7	0.6
2013	5	208	166	9	0.5
2014	6	194	152	6	0.6
2015	5	192	149	10	0.5
2016	5	181	142	10	0.5
2017	4	194	.	14	0.4
2018	4	195	.	15	0.4



ESTABLISHMENTS: MINING

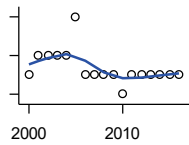
U.S. Census Bureau, County Business Patterns. Beginning with the 2017 data, any tabulation with fewer than 3 establishments were omitted from the release. Data for these establishments are included in the broader total.

Year	County	State of Kansas	Non Metro Kansas	County Rank	Per 1000 or \$ Per Capita
2000	19	868	619	9	2.0
2001	21	878	622	9	2.2
2002	19	847	615	9	2.0
2003	23	864	633	6	2.4
2004	22	880	647	7	2.3
2005	25	941	695	8	2.6
2006	26	991	734	8	2.7
2007	30	1,000	759	6	3.1
2008	29	1,047	799	7	3.0
2009	26	1,016	772	7	2.7
2010	26	1,009	762	7	2.7
2011	25	1,013	763	10	2.6
2012	24	1,048	789	10	2.5
2013	25	1,060	802	10	2.6
2014	28	1,102	828	10	2.9
2015	33	1,069	810	7	3.4
2016	29	990	747	7	3.0
2017	29	920	.	7	3.1
2018	29	900	.	5	3.1
2019	27	864	.	5	2.9
2020	28	825	.	5	3.1

County: county value. Kansas: state value. County Rank: highest county value ranked #1. (\$000): thousands of dollars. Nonmetro Kansas: Kansas total less Metropolitan Areas as defined by the Office of Management and Budget (OMB; released 3/6/2020). Per 1000: For nonmoney amounts, Per 1000=(county value / county population for the same year as the data) x 1000. \$ Per capita=(county value / county population for the same year as the data). Value= . indicates missing or suppressed data or value not calculated.

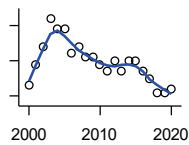
Business

ESTABLISHMENTS: UTILITIES



U.S. Census Bureau, County Business Patterns. Beginning with the 2017 data, any tabulation with fewer than 3 establishments were omitted from the release. Data for these establishments are included in the broader total.

Year	County	State of Kansas	Non Metro Kansas	County Rank	Per 1000 or \$ Per Capita
2000	2	274	192	68	0.2
2001	3	290	204	39	0.3
2002	3	278	195	38	0.3
2003	3	268	180	36	0.3
2004	3	247	164	32	0.3
2005	5	254	172	13	0.5
2006	2	248	169	58	0.2
2007	2	222	156	56	0.2
2008	2	244	166	61	0.2
2009	2	222	152	57	0.2
2010	1	197	129	82	0.1
2011	2	230	156	57	0.2
2012	2	232	156	57	0.2
2013	2	234	159	58	0.2
2014	2	232	160	58	0.2
2015	2	237	165	59	0.2
2016	2	245	171	60	0.2



ESTABLISHMENTS: CONSTRUCTION

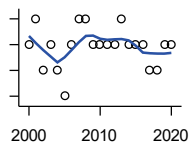
U.S. Census Bureau, County Business Patterns. Beginning with the 2017 data, any tabulation with fewer than 3 establishments were omitted from the release. Data for these establishments are included in the broader total.

Year	County	State of Kansas	Non Metro Kansas	County Rank	Per 1000 or \$ Per Capita
2000	33	7,703	2,616	40	3.4
2001	39	7,449	2,520	30	4.1
2002	44	7,519	2,482	27	4.6
2003	52	7,722	2,521	25	5.4
2004	49	7,887	2,518	28	5.2
2005	49	8,032	2,515	28	5.1
2006	42	8,031	2,494	30	4.3
2007	44	8,057	2,547	31	4.5
2008	41	7,831	2,522	33	4.2
2009	41	7,342	2,452	30	4.2
2010	39	7,064	2,394	30	4.0
2011	37	6,774	2,361	29	3.8
2012	40	6,741	2,393	30	4.1
2013	37	6,802	2,394	31	3.8
2014	40	6,920	2,383	31	4.1
2015	40	7,014	2,377	30	4.1
2016	37	6,988	2,343	30	3.9
2017	35	7,031	2,316	31	3.7
2018	31	7,124	2,285	35	3.3
2019	31	7,060	2,242	35	3.4
2020	32	7,089	2,249	36	3.5

County: county value. Kansas: state value. County Rank: highest county value ranked #1. (\$000): thousands of dollars. Nonmetro Kansas: Kansas total less Metropolitan Areas as defined by the Office of Management and Budget (OMB; released 3/6/2020). Per 1000: For nonmoney amounts, Per 1000=(county value / county population for the same year as the data) x 1000. \$ Per capita=(county value / county population for the same year as the data). Value= . indicates missing or suppressed data or value not calculated.

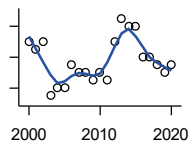
Business

**ESTABLISHMENTS:
MANUFACTURING**



U.S. Census Bureau, County Business Patterns. Beginning with the 2017 data, any tabulation with fewer than 3 establishments were omitted from the release. Data for these establishments are included in the broader total.

Year	County	State of Kansas	Non Metro Kansas	County Rank	Per 1000 or \$ Per Capita
2000	9	3,229	1,316	56	0.9
2001	10	3,240	1,323	48	1.0
2002	8	3,181	1,289	58	0.8
2003	9	3,159	1,291	54	0.9
2004	8	3,179	1,313	62	0.8
2005	7	3,128	1,278	65	0.7
2006	9	3,165	1,290	54	0.9
2007	10	3,184	1,316	49	1.0
2008	10	3,171	1,297	51	1.0
2009	9	3,026	1,240	54	0.9
2010	9	2,955	1,222	52	0.9
2011	9	2,877	1,193	53	0.9
2012	9	2,889	1,197	53	0.9
2013	10	2,836	1,165	47	1.0
2014	9	2,831	1,168	51	0.9
2015	9	2,817	1,161	54	0.9
2016	9	2,791	1,150	54	0.9
2017	8	2,760	1,147	55	0.8
2018	8	2,725	1,126	54	0.9
2019	9	2,695	1,111	49	1.0
2020	9	2,673	1,103	52	1.0



**ESTABLISHMENTS: WHOLESALE
TRADE**

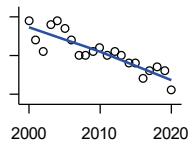
U.S. Census Bureau, County Business Patterns. Beginning with the 2017 data, any tabulation with fewer than 3 establishments were omitted from the release. Data for these establishments are included in the broader total.

Year	County	State of Kansas	Non Metro Kansas	County Rank	Per 1000 or \$ Per Capita
2000	26	4,876	1,776	26	2.7
2001	25	4,811	1,769	27	2.6
2002	26	4,719	1,750	25	2.7
2003	19	4,590	1,637	44	2.0
2004	20	4,553	1,634	37	2.1
2005	20	4,541	1,618	37	2.1
2006	23	4,517	1,596	29	2.4
2007	22	4,555	1,629	30	2.3
2008	22	4,501	1,622	31	2.3
2009	21	4,437	1,614	34	2.2
2010	22	4,432	1,612	30	2.3
2011	21	4,400	1,660	32	2.2
2012	26	4,563	1,755	26	2.7
2013	29	4,501	1,741	23	3.0
2014	28	4,497	1,746	25	2.9
2015	28	4,459	1,755	23	2.9
2016	24	4,457	1,732	31	2.5
2017	24	4,436	1,774	28	2.5
2018	23	4,330	1,727	28	2.5
2019	22	4,291	1,713	31	2.4
2020	23	4,191	1,677	30	2.5

County: county value. Kansas: state value. County Rank: highest county value ranked #1. (\$000): thousands of dollars. Nonmetro Kansas: Kansas total less Metropolitan Areas as defined by the Office of Management and Budget (OMB; released 3/6/2020). Per 1000: For nonmoney amounts, Per 1000=(county value / county population for the same year as the data) x 1000. \$ Per capita=(county value / county population for the same year as the data). Value= . indicates missing or suppressed data or value not calculated.

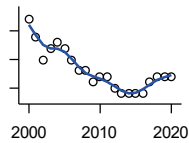
Business

ESTABLISHMENTS: RETAIL TRADE



U.S. Census Bureau, County Business Patterns. Beginning with the 2017 data, any tabulation with fewer than 3 establishments were omitted from the release. Data for these establishments are included in the broader total.

Year	County	State of Kansas	Non Metro Kansas	County Rank	Per 1000 or \$ Per Capita
2000	64	12,261	5,240	41	6.6
2001	59	12,206	5,207	41	6.2
2002	56	11,980	5,082	42	5.8
2003	63	11,834	5,049	36	6.6
2004	64	11,748	4,967	35	6.7
2005	62	11,562	4,834	35	6.4
2006	59	11,367	4,702	37	6.1
2007	55	11,306	4,653	39	5.7
2008	55	10,978	4,494	37	5.7
2009	56	10,760	4,372	36	5.8
2010	57	10,727	4,346	35	5.9
2011	55	10,655	4,289	36	5.7
2012	56	10,585	4,202	33	5.7
2013	55	10,433	4,147	34	5.6
2014	53	10,391	4,070	35	5.4
2015	53	10,327	4,061	34	5.5
2016	49	10,197	3,965	36	5.1
2017	51	10,074	3,885	36	5.4
2018	52	9,866	3,797	35	5.6
2019	51	9,762	3,750	36	5.6
2020	46	9,591	3,666	37	5.0



ESTABLISHMENTS: TRANSPORTATION & WAREHOUSING

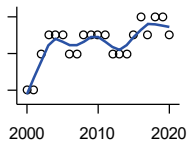
U.S. Census Bureau, County Business Patterns. Beginning with the 2017 data, any tabulation with fewer than 3 establishments were omitted from the release. Data for these establishments are included in the broader total.

Year	County	State of Kansas	Non Metro Kansas	County Rank	Per 1000 or \$ Per Capita
2000	17	2,474	1,293	38	1.8
2001	14	2,463	1,298	48	1.5
2002	10	2,461	1,278	69	1.0
2003	12	2,576	1,297	57	1.3
2004	13	2,651	1,324	52	1.4
2005	12	2,632	1,326	55	1.2
2006	10	2,626	1,295	65	1.0
2007	8	2,664	1,314	79	0.8
2008	8	2,675	1,329	76	0.8
2009	6	2,635	1,313	87	0.6
2010	7	2,615	1,313	80	0.7
2011	7	2,579	1,285	78	0.7
2012	5	2,519	1,243	89	0.5
2013	4	2,492	1,226	92	0.4
2014	4	2,518	1,240	92	0.4
2015	4	2,554	1,257	94	0.4
2016	4	2,567	1,241	93	0.4
2017	6	2,640	1,245	78	0.6
2018	7	2,627	1,238	72	0.7
2019	7	2,615	1,209	75	0.8
2020	7	2,589	1,179	72	0.8

County: county value. Kansas: state value. County Rank: highest county value ranked #1. (\$000): thousands of dollars. Nonmetro Kansas: Kansas total less Metropolitan Areas as defined by the Office of Management and Budget (OMB; released 3/6/2020). Per 1000: For nonmoney amounts, Per 1000=(county value / county population for the same year as the data) x 1000. \$ Per capita=(county value / county population for the same year as the data). Value= . indicates missing or suppressed data or value not calculated.

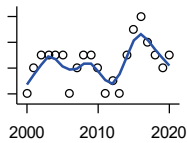
Business

ESTABLISHMENTS: INFORMATION



U.S. Census Bureau, County Business Patterns. Beginning with the 2017 data, any tabulation with fewer than 3 establishments were omitted from the release. Data for these establishments are included in the broader total.

Year	County	State of Kansas	Non Metro Kansas	County Rank	Per 1000 or \$ Per Capita
2000	4	1,542	578	75	0.4
2001	4	1,556	566	73	0.4
2002	6	1,517	551	52	0.6
2003	7	1,516	564	46	0.7
2004	7	1,518	556	41	0.7
2005	7	1,519	536	41	0.7
2006	6	1,549	559	50	0.6
2007	6	1,504	527	46	0.6
2008	7	1,468	522	40	0.7
2009	7	1,420	510	38	0.7
2010	7	1,437	527	41	0.7
2011	7	1,428	537	43	0.7
2012	6	1,387	515	46	0.6
2013	6	1,337	487	45	0.6
2014	6	1,335	496	42	0.6
2015	7	1,359	510	39	0.7
2016	8	1,431	537	35	0.8
2017	7	1,439	.	43	0.7
2018	8	1,407	.	34	0.9
2019	8	1,422	.	35	0.9
2020	7	1,424	.	41	0.8



ESTABLISHMENTS: FINANCE & INSURANCE

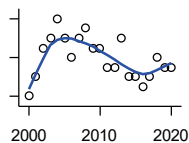
U.S. Census Bureau, County Business Patterns. Beginning with the 2017 data, any tabulation with fewer than 3 establishments were omitted from the release. Data for these establishments are included in the broader total.

Year	County	State of Kansas	Non Metro Kansas	County Rank	Per 1000 or \$ Per Capita
2000	22	5,209	1,848	40	2.3
2001	24	5,178	1,828	36	2.5
2002	25	5,496	1,911	38	2.6
2003	25	5,569	1,907	36	2.6
2004	25	5,572	1,913	34	2.6
2005	25	5,708	1,964	35	2.6
2006	22	5,877	1,976	41	2.3
2007	24	6,017	2,030	37	2.5
2008	25	6,010	2,023	36	2.6
2009	25	5,933	1,994	36	2.6
2010	24	5,872	1,975	38	2.5
2011	22	5,854	1,985	42	2.3
2012	23	5,993	2,024	40	2.4
2013	22	5,903	1,993	43	2.2
2014	25	5,894	2,000	36	2.6
2015	27	5,932	1,998	33	2.8
2016	28	6,022	2,021	32	2.9
2017	26	6,026	2,007	33	2.7
2018	25	6,023	1,997	35	2.7
2019	24	5,953	1,977	35	2.6
2020	25	5,926	1,969	35	2.7

County: county value. Kansas: state value. County Rank: highest county value ranked #1. (\$000): thousands of dollars. Nonmetro Kansas: Kansas total less Metropolitan Areas as defined by the Office of Management and Budget (OMB; released 3/6/2020). Per 1000: For nonmoney amounts, Per 1000=(county value / county population for the same year as the data) x 1000. \$ Per capita=(county value / county population for the same year as the data). Value= . indicates missing or suppressed data or value not calculated.

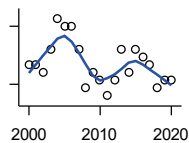
Business

ESTABLISHMENTS: REAL ESTATE, RENTAL, AND LEASING



U.S. Census Bureau, County Business Patterns. Beginning with the 2017 data, any tabulation with fewer than 3 establishments were omitted from the release. Data for these establishments are included in the broader total.

Year	County	State of Kansas	Non Metro Kansas	County Rank	Per 1000 or \$ Per Capita
2000	10	2,733	687	33	1.0
2001	12	2,849	724	29	1.3
2002	15	2,952	735	27	1.6
2003	16	3,007	727	27	1.7
2004	18	3,108	713	25	1.9
2005	16	3,203	727	26	1.7
2006	14	3,268	736	29	1.4
2007	16	3,286	721	27	1.6
2008	17	3,239	738	27	1.8
2009	15	3,122	723	29	1.6
2010	15	3,050	708	30	1.6
2011	13	3,002	692	29	1.3
2012	13	2,981	691	29	1.3
2013	16	3,046	717	26	1.6
2014	12	3,135	738	31	1.2
2015	12	3,179	744	29	1.2
2016	11	3,293	757	30	1.2
2017	12	3,389	.	30	1.3
2018	14	3,409	.	29	1.5
2019	13	3,464	.	30	1.4
2020	13	3,500	.	30	1.4



ESTABLISHMENTS: PROFESSIONAL, SCIENTIFIC, AND TECHNICAL SERVICES

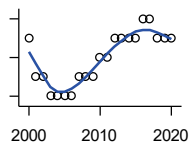
U.S. Census Bureau, County Business Patterns. Beginning with the 2017 data, any tabulation with fewer than 3 establishments were omitted from the release. Data for these establishments are included in the broader total.

Year	County	State of Kansas	Non Metro Kansas	County Rank	Per 1000 or \$ Per Capita
2000	30	6,424	1,690	29	3.1
2001	30	6,492	1,665	28	3.1
2002	29	6,719	1,704	29	3.0
2003	32	6,793	1,735	27	3.3
2004	36	7,025	1,730	25	3.8
2005	35	7,087	1,711	26	3.6
2006	35	7,231	1,736	24	3.6
2007	32	7,329	1,729	27	3.3
2008	27	7,133	1,671	36	2.8
2009	29	7,122	1,676	29	3.0
2010	28	7,172	1,680	29	2.9
2011	26	7,115	1,668	31	2.7
2012	28	7,122	1,681	31	2.9
2013	32	7,129	1,698	27	3.3
2014	29	7,206	1,682	28	3.0
2015	32	7,184	1,687	25	3.3
2016	31	7,146	1,659	25	3.2
2017	30	7,224	1,679	26	3.2
2018	27	7,138	1,655	30	2.9
2019	28	7,119	.	29	3.1
2020	28	7,117	.	29	3.1

County: county value. Kansas: state value. County Rank: highest county value ranked #1. (\$000): thousands of dollars. Nonmetro Kansas: Kansas total less Metropolitan Areas as defined by the Office of Management and Budget (OMB; released 3/6/2020). Per 1000: For nonmoney amounts, Per 1000=(county value / county population for the same year as the data) x 1000. \$ Per capita=(county value / county population for the same year as the data). Value= . indicates missing or suppressed data or value not calculated.

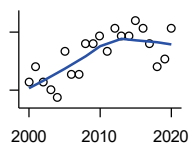
Business

ESTABLISHMENTS: MANAGEMENT OF COMPANIES AND ENTERPRISES



U.S. Census Bureau, County Business Patterns. Beginning with the 2017 data, any tabulation with fewer than 3 establishments were omitted from the release. Data for these establishments are included in the broader total.

Year	County	State of Kansas	Non Metro Kansas	County Rank	Per 1000 or \$ Per Capita
2000	4	622	145	20	0.4
2001	2	593	141	38	0.2
2002	2	597	152	41	0.2
2003	1	561	135	59	0.1
2004	1	569	133	57	0.1
2005	1	543	127	56	0.1
2006	1	542	131	57	0.1
2007	2	550	133	39	0.2
2008	2	553	139	42	0.2
2009	2	575	136	41	0.2
2010	3	567	131	26	0.3
2011	3	552	134	23	0.3
2012	4	593	135	19	0.4
2013	4	590	135	17	0.4
2014	4	603	136	21	0.4
2015	4	613	140	21	0.4
2016	5	655	171	16	0.5
2017	5	675	.	16	0.5
2018	4	647	.	20	0.4
2019	4	650	.	19	0.4
2020	4	627	.	19	0.4



ESTABLISHMENTS: ADMIN, SUPPORT, WASTE MGMT., AND REMEDIATION

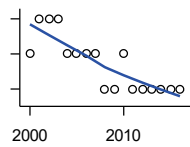
U.S. Census Bureau, County Business Patterns. Beginning with the 2017 data, any tabulation with fewer than 3 establishments were omitted from the release. Data for these establishments are included in the broader total.

Year	County	State of Kansas	Non Metro Kansas	County Rank	Per 1000 or \$ Per Capita
2000	6	3,307	871	58	0.6
2001	8	3,421	913	49	0.8
2002	6	3,232	882	58	0.6
2003	5	3,189	858	68	0.5
2004	4	3,301	891	73	0.4
2005	10	3,342	896	38	1.0
2006	7	3,395	886	51	0.7
2007	7	3,522	921	50	0.7
2008	11	3,587	932	36	1.1
2009	11	3,505	904	37	1.1
2010	12	3,494	897	32	1.2
2011	10	3,447	903	37	1.0
2012	13	3,462	891	30	1.3
2013	12	3,489	904	33	1.2
2014	12	3,569	933	35	1.2
2015	14	3,630	964	29	1.4
2016	13	3,705	987	32	1.4
2017	11	3,741	991	37	1.2
2018	8	3,740	983	48	0.9
2019	9	3,762	991	44	1.0
2020	13	3,807	989	33	1.4

County: county value. Kansas: state value. County Rank: highest county value ranked #1. (\$000): thousands of dollars. Nonmetro Kansas: Kansas total less Metropolitan Areas as defined by the Office of Management and Budget (OMB; released 3/6/2020). Per 1000: For nonmoney amounts, Per 1000=(county value / county population for the same year as the data) x 1000. \$ Per capita=(county value / county population for the same year as the data). Value= . indicates missing or suppressed data or value not calculated.

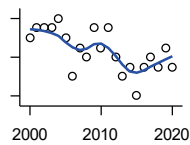
Business

ESTABLISHMENTS: EDUCATIONAL SERVICES



U.S. Census Bureau, County Business Patterns. Beginning with the 2017 data, any tabulation with fewer than 3 establishments were omitted from the release. Data for these establishments are included in the broader total.

Year	County	State of Kansas	Non Metro Kansas	County Rank	Per 1000 or \$ Per Capita
2000	1	604	155	70	0.1
2001	2	625	168	49	0.2
2002	2	666	165	46	0.2
2003	2	663	173	44	0.2
2004	1	690	173	72	0.1
2005	1	699	168	69	0.1
2006	1	698	175	68	0.1
2007	1	691	165	68	0.1
2008	0	692	158	105	0.0
2009	0	690	150	105	0.0
2010	1	700	149	68	0.1
2011	0	711	150	105	0.0
2012	0	724	145	105	0.0
2013	0	735	153	105	0.0
2014	0	722	152	105	0.0
2015	0	754	152	105	0.0
2016	0	728	150	105	0.0



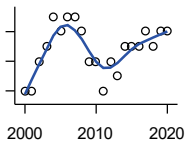
ESTABLISHMENTS: HEALTH CARE AND SOCIAL ASSISTANCE

U.S. Census Bureau, County Business Patterns. Beginning with the 2017 data, any tabulation with fewer than 3 establishments were omitted from the release. Data for these establishments are included in the broader total.

Year	County	State of Kansas	Non Metro Kansas	County Rank	Per 1000 or \$ Per Capita
2000	38	6,564	2,591	34	3.9
2001	39	6,636	2,590	33	4.1
2002	39	7,052	2,777	35	4.0
2003	39	7,129	2,792	35	4.1
2004	40	7,239	2,813	35	4.2
2005	38	7,412	2,855	35	4.0
2006	34	7,477	2,860	39	3.5
2007	37	7,661	2,864	38	3.8
2008	36	7,651	2,810	40	3.7
2009	39	7,696	2,787	36	4.0
2010	37	7,751	2,830	38	3.8
2011	39	7,804	2,817	35	4.0
2012	36	7,973	2,793	38	3.7
2013	34	7,877	2,729	38	3.5
2014	35	7,809	2,686	37	3.6
2015	32	8,103	2,692	39	3.3
2016	35	8,315	2,678	37	3.7
2017	36	8,136	2,646	35	3.8
2018	35	8,126	2,632	36	3.7
2019	37	8,184	2,587	33	4.0
2020	35	8,290	2,571	35	3.8

County: county value. Kansas: state value. County Rank: highest county value ranked #1. (\$000): thousands of dollars. Nonmetro Kansas: Kansas total less Metropolitan Areas as defined by the Office of Management and Budget (OMB; released 3/6/2020). Per 1000: For nonmoney amounts, Per 1000=(county value / county population for the same year as the data) x 1000. \$ Per capita=(county value / county population for the same year as the data). Value= . indicates missing or suppressed data or value not calculated.

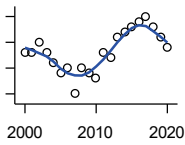
Business



ESTABLISHMENTS: ARTS, ENTERTAINMENT, AND RECREATION

U.S. Census Bureau, County Business Patterns. Beginning with the 2017 data, any tabulation with fewer than 3 establishments were omitted from the release. Data for these establishments are included in the broader total.

Year	County	State of Kansas	Non Metro Kansas	County Rank	Per 1000 or \$ Per Capita
2000	3	981	419	69	0.3
2001	3	1,009	433	71	0.3
2002	5	1,054	441	47	0.5
2003	6	1,045	443	42	0.6
2004	8	1,082	445	29	0.8
2005	7	1,109	446	35	0.7
2006	8	1,080	445	31	0.8
2007	8	1,092	444	29	0.8
2008	7	1,062	423	31	0.7
2009	5	1,063	421	44	0.5
2010	5	1,018	406	44	0.5
2011	3	997	387	67	0.3
2012	5	1,000	388	44	0.5
2013	4	1,009	377	52	0.4
2014	6	1,030	365	34	0.6
2015	6	1,031	357	35	0.6
2016	6	1,060	366	35	0.6
2017	7	1,096	.	31	0.7
2018	6	1,088	.	33	0.6
2019	7	1,087	.	30	0.8
2020	7	1,064	.	34	0.8



ESTABLISHMENTS: ACCOMMODATION AND FOOD SERVICES

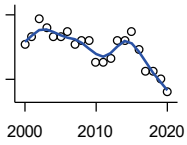
U.S. Census Bureau, County Business Patterns. Beginning with the 2017 data, any tabulation with fewer than 3 establishments were omitted from the release. Data for these establishments are included in the broader total.

Year	County	State of Kansas	Non Metro Kansas	County Rank	Per 1000 or \$ Per Capita
2000	33	5,536	2,213	33	3.4
2001	33	5,551	2,173	34	3.4
2002	35	5,610	2,174	30	3.6
2003	33	5,635	2,188	33	3.4
2004	31	5,681	2,160	35	3.3
2005	29	5,776	2,170	34	3.0
2006	30	5,745	2,132	33	3.1
2007	25	5,877	2,095	38	2.6
2008	30	5,843	2,052	32	3.1
2009	29	5,794	2,029	34	3.0
2010	28	5,898	2,046	33	2.9
2011	33	5,958	2,067	31	3.4
2012	32	5,951	2,046	31	3.3
2013	36	6,061	2,070	28	3.7
2014	37	5,985	2,024	28	3.8
2015	38	6,034	2,063	28	3.9
2016	39	6,126	2,094	29	4.1
2017	40	6,250	2,123	27	4.2
2018	38	6,256	2,128	28	4.1
2019	36	6,231	2,131	30	3.9
2020	34	6,206	2,131	30	3.7

County: county value. Kansas: state value. County Rank: highest county value ranked #1. (\$000): thousands of dollars. Nonmetro Kansas: Kansas total less Metropolitan Areas as defined by the Office of Management and Budget (OMB; released 3/6/2020). Per 1000: For nonmoney amounts, Per 1000=(county value / county population for the same year as the data) x 1000. \$ Per capita=(county value / county population for the same year as the data). Value= . indicates missing or suppressed data or value not calculated.

Business

ESTABLISHMENTS: OTHER SERVICES

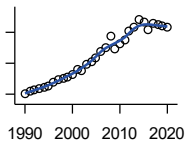


U.S. Census Bureau, County Business Patterns. Beginning with the 2017 data, any tabulation with fewer than 3 establishments were omitted from the release. Data for these establishments are included in the broader total.

Year	County	State of Kansas	Non Metro Kansas	County Rank	Per 1000 or \$ Per Capita
2000	53	8,423	3,636	33	5.5
2001	55	8,310	3,614	30	5.7
2002	59	8,552	3,658	29	6.1
2003	57	8,411	3,605	31	6.0
2004	55	8,343	3,597	32	5.8
2005	55	8,321	3,571	32	5.7
2006	56	8,225	3,490	30	5.8
2007	53	8,355	3,534	32	5.5
2008	54	8,104	3,406	32	5.6
2009	54	8,040	3,405	32	5.6
2010	49	7,998	3,379	34	5.1
2011	49	7,883	3,294	33	5.1
2012	50	7,913	3,303	31	5.1
2013	54	7,947	3,290	29	5.5
2014	54	7,943	3,285	29	5.5
2015	56	7,869	3,255	29	5.8
2016	52	7,839	3,204	30	5.4
2017	47	7,873	3,189	33	4.9
2018	47	7,853	3,176	33	5.0
2019	45	7,834	3,138	34	4.9
2020	42	7,787	3,073	34	4.6

County: county value. Kansas: state value. County Rank: highest county value ranked #1. (\$000): thousands of dollars. Nonmetro Kansas: Kansas total less Metropolitan Areas as defined by the Office of Management and Budget (OMB; released 3/6/2020). Per 1000: For nonmoney amounts, Per 1000=(county value / county population for the same year as the data) x 1000. \$ Per capita=(county value / county population for the same year as the data). Value= . indicates missing or suppressed data or value not calculated.

Business



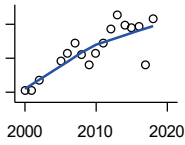
**TOTAL ANNUAL PAYROLL (\$000)
COUNTY BUSINESS PATTERNS**

U.S. Census Bureau, County Business Patterns. Beginning with the 2017 data, any tabulation with fewer than 3 establishments were omitted from the release. Data for these establishments are included in the broader total.

Year	County	State of Kansas	Non Metro Kansas	County Rank	Per 1000 or \$ Per Capita
1990	39,961	17,487,316	4,442,429	39	4,118.8
1991	44,058	18,162,326	4,612,616	37	4,575.1
1992	46,225	19,244,346	4,882,060	38	4,785.7
1993	46,918	20,087,190	5,182,780	40	4,897.0
1994	48,948	21,201,652	5,541,423	40	5,076.0
1995	50,092	22,825,920	5,875,310	40	5,109.9
1996	54,647	24,613,884	6,198,398	39	5,597.4
1997	58,300	26,787,098	6,599,061	39	5,967.9
1998	60,796	28,747,576	6,871,794	39	6,197.3
1999	61,932	30,600,434	7,121,961	39	6,417.8
2000	66,053	31,990,762	7,520,424	39	6,847.0
2001	72,053	33,303,992	7,598,165	38	7,522.0
2002	70,737	33,152,962	7,572,002	38	7,315.9
2003	78,512	34,040,944	7,726,561	38	8,199.7
2004	82,560	35,725,812	8,303,779	38	8,697.9
2005	87,194	36,646,064	8,586,986	38	9,065.7
2006	94,414	39,251,388	9,178,947	38	9,775.7
2007	100,765	42,022,753	.	38	10,390.3
2008	114,916	43,984,689	.	37	11,866.6
2009	99,296	42,146,866	.	37	10,269.5
2010	104,311	42,686,303	10,294,015	37	10,802.7
2011	110,318	43,733,944	.	37	11,439.0
2012	120,854	45,608,072	11,222,183	37	12,385.1
2013	126,918	47,715,601	11,446,751	37	12,980.0
2014	136,178	49,712,832	11,957,931	36	13,941.2
2015	133,345	51,259,676	11,975,718	38	13,751.2
2016	123,485	51,016,318	12,148,646	38	12,920.9
2017	131,713	52,754,605	12,448,592	39	13,864.5
2018	129,540	55,087,460	12,810,270	39	13,869.4
2019	128,984	57,272,387	13,123,288	39	14,075.1
2020	126,662	58,374,388	14,007,955	39	13,832.3

County: county value. Kansas: state value. County Rank: highest county value ranked #1. (\$000): thousands of dollars. Nonmetro Kansas: Kansas total less Metropolitan Areas as defined by the Office of Management and Budget (OMB; released 3/6/2020). Per 1000: For nonmoney amounts, Per 1000=(county value / county population for the same year as the data) x 1000. \$ Per capita=(county value / county population for the same year as the data). Value= . indicates missing or suppressed data or value not calculated.

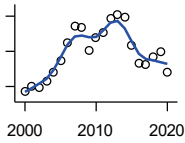
Business



**TOTAL ANNUAL PAYROLL(\$000):
FORESTRY, FISHING, HUNTING, AND
AG SUPPORT**

U.S. Census Bureau, County Business Patterns. Beginning with the 2017 data, any tabulation with fewer than 3 establishments were omitted from the release. Data for these establishments are included in the broader total.

Year	County	State of Kansas	Non Metro Kansas	County Rank	Per 1000 or \$ Per Capita
2000	221	13,551	.	.	22.9
2001	227	.	.	.	23.7
2002	348	16,528	.	.	36.0
2003	.	17,247	.	.	.
2004	.	17,552	.	.	.
2005	567	16,298	.	.	59.0
2006	656	17,908	.	.	67.9
2007	771	22,199	.	.	79.5
2008	637	21,359	.	.	65.8
2009	516	22,466	.	.	53.4
2010	655	22,753	.	.	67.8
2011	773	23,320	.	.	80.2
2012	945	27,492	.	.	96.8
2013	1,111	30,360	.	.	113.6
2014	989	34,862	.	.	101.2
2015	957	35,980	.	.	98.7
2016	977	31,488	.	.	102.2
2017	529	34,117	.	.	55.7
2018	1,064	37,960	.	.	113.9



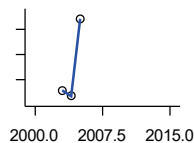
**TOTAL ANNUAL PAYROLL(\$000):
MINING**

U.S. Census Bureau, County Business Patterns. Beginning with the 2017 data, any tabulation with fewer than 3 establishments were omitted from the release. Data for these establishments are included in the broader total.

Year	County	State of Kansas	Non Metro Kansas	County Rank	Per 1000 or \$ Per Capita
2000	3,747	240,079	.	.	388.4
2001	5,203	273,838	.	.	543.2
2002	4,525	262,277	.	.	468.0
2003	6,429	290,652	.	.	671.4
2004	9,231	326,997	.	.	972.5
2005	12,307	381,069	.	.	1,279.6
2006	17,585	482,102	.	.	1,820.8
2007	22,191	551,751	.	.	2,288.2
2008	21,820	620,446	.	.	2,253.2
2009	15,184	465,070	.	.	1,570.4
2010	18,743	485,841	.	.	1,941.1
2011	20,263	541,536	.	.	2,101.1
2012	24,517	600,402	.	.	2,512.5
2013	25,470	599,788	.	.	2,604.8
2014	24,853	678,673	.	.	2,544.3
2015	16,622	552,658	.	.	1,714.1
2016	11,642	428,767	.	.	1,218.2
2017	11,169	379,883	.	.	1,175.7
2018	13,425	431,367	.	.	1,437.4
2019	15,003	349,270	.	.	1,637.2
2020	9,036	302,795	.	.	986.8

County: county value. Kansas: state value. County Rank: highest county value ranked #1. (\$000): thousands of dollars. Nonmetro Kansas: Kansas total less Metropolitan Areas as defined by the Office of Management and Budget (OMB; released 3/6/2020). Per 1000: For nonmoney amounts, Per 1000=(county value / county population for the same year as the data) x 1000. \$ Per capita=(county value / county population for the same year as the data). Value= . indicates missing or suppressed data or value not calculated.

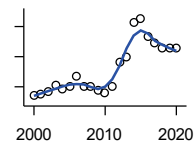
Business



**TOTAL ANNUAL PAYROLL(\$000):
UTILITIES**

U.S. Census Bureau, County Business Patterns. Beginning with the 2017 data, any tabulation with fewer than 3 establishments were omitted from the release. Data for these establishments are included in the broader total.

Year	County	State of Kansas	Non Metro Kansas	County Rank	Per 1000 or \$ Per Capita
2000	.	410,313	.	.	.
2001	.	452,057	.	.	.
2002	.	377,559	.	.	.
2003	1,287	378,157	.	.	134.4
2004	1,171	377,809	.	.	123.4
2005	2,709	429,864	.	.	281.7
2006	.	443,999	.	.	.
2007	.	480,068	.	.	.
2008	.	541,066	.	.	.
2009	.	563,373	.	.	.
2010	.	512,628	.	.	.
2011	.	653,229	.	.	.
2012	.	625,451	.	.	.
2013	.	625,347	.	.	.
2014	.	610,960	.	.	.
2015	.	668,559	.	.	.



**TOTAL ANNUAL PAYROLL(\$000):
CONSTRUCTION**

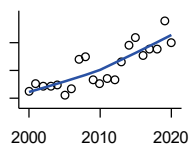
U.S. Census Bureau, County Business Patterns. Beginning with the 2017 data, any tabulation with fewer than 3 establishments were omitted from the release. Data for these establishments are included in the broader total.

Year	County	State of Kansas	Non Metro Kansas	County Rank	Per 1000 or \$ Per Capita
2000	2,835	2,256,057	.	.	293.9
2001	2,957	2,320,652	.	.	308.7
2002	3,431	2,302,229	.	.	354.8
2003	4,180	2,282,021	.	.	436.6
2004	3,720	2,302,854	.	.	391.9
2005	3,989	2,465,977	.	.	414.7
2006	5,358	2,700,351	.	.	554.8
2007	3,979	2,772,168	.	.	410.3
2008	4,037	2,950,073	.	.	416.9
2009	3,599	2,709,864	.	.	372.2
2010	3,246	2,553,555	.	.	336.2
2011	4,017	2,550,355	.	.	416.5
2012	7,272	2,733,284	.	.	745.2
2013	7,977	2,866,801	.	.	815.8
2014	12,590	3,135,814	.	.	1,288.9
2015	13,067	3,270,952	.	.	1,347.5
2016	10,626	3,328,610	.	.	1,111.9
2017	9,768	3,568,505	.	.	1,028.2
2018	9,121	3,806,196	.	.	976.6
2019	9,135	3,879,912	.	.	996.8
2020	9,067	3,983,029	.	.	990.2

County: county value. Kansas: state value. County Rank: highest county value ranked #1. (\$000): thousands of dollars. Nonmetro Kansas: Kansas total less Metropolitan Areas as defined by the Office of Management and Budget (OMB; released 3/6/2020). Per 1000: For nonmoney amounts, Per 1000=(county value / county population for the same year as the data) x 1000. \$ Per capita=(county value / county population for the same year as the data). Value= . indicates missing or suppressed data or value not calculated.

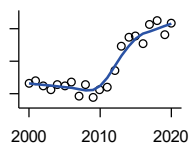
Business

**TOTAL ANNUAL PAYROLL(\$000):
MANUFACTURING**



U.S. Census Bureau, County Business Patterns. Beginning with the 2017 data, any tabulation with fewer than 3 establishments were omitted from the release. Data for these establishments are included in the broader total.

Year	County	State of Kansas	Non Metro Kansas	County Rank	Per 1000 or \$ Per Capita
2000	2,483	7,015,414	.	.	257.4
2001	3,061	7,301,706	.	.	319.6
2002	2,827	6,802,605	.	.	292.4
2003	2,849	6,691,611	.	.	297.5
2004	3,000	6,985,656	.	.	316.1
2005	2,254	7,221,614	.	.	234.4
2006	2,688	7,621,873	.	.	278.3
2007	4,782	7,873,359	.	.	493.1
2008	4,942	8,441,541	.	.	510.3
2009	3,358	7,477,838	.	.	347.3
2010	3,053	7,556,955	.	.	316.2
2011	3,399	7,747,934	.	.	352.4
2012	3,362	7,704,851	.	.	344.5
2013	4,574	8,365,542	.	.	467.8
2014	5,842	8,787,306	.	.	598.1
2015	6,392	9,052,105	.	.	659.2
2016	5,119	8,868,744	.	.	535.6
2017	5,522	9,075,793	.	.	581.3
2018	5,540	9,481,652	.	.	593.1
2019	7,573	10,171,575	.	.	826.4
2020	6,003	9,744,825	.	.	655.6



**TOTAL ANNUAL PAYROLL(\$000):
WHOLESALE TRADE**

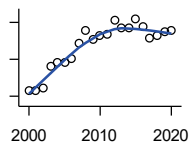
U.S. Census Bureau, County Business Patterns. Beginning with the 2017 data, any tabulation with fewer than 3 establishments were omitted from the release. Data for these establishments are included in the broader total.

Year	County	State of Kansas	Non Metro Kansas	County Rank	Per 1000 or \$ Per Capita
2000	6,500	2,332,755	.	.	673.8
2001	6,910	2,283,169	.	.	721.4
2002	6,288	2,107,653	.	.	650.3
2003	5,512	2,622,701	.	.	575.7
2004	6,334	2,663,196	.	.	667.3
2005	6,141	2,345,990	.	.	638.5
2006	6,765	2,592,211	.	.	700.5
2007	4,569	2,682,542	.	.	471.1
2008	6,324	3,078,655	.	.	653.0
2009	4,354	2,940,949	.	.	450.3
2010	5,647	3,097,628	.	.	584.8
2011	6,040	3,305,811	.	.	626.3
2012	8,506	3,339,997	.	.	871.7
2013	12,214	3,460,512	.	.	1,249.1
2014	13,723	3,712,075	.	.	1,404.9
2015	13,844	3,760,189	.	.	1,427.7
2016	12,740	3,738,207	.	.	1,333.1
2017	15,575	3,822,730	.	.	1,639.5
2018	16,262	3,814,353	.	.	1,741.1
2019	14,160	4,025,802	.	.	1,545.2
2020	15,893	4,224,666	.	.	1,735.6

County: county value. Kansas: state value. County Rank: highest county value ranked #1. (\$000): thousands of dollars. Nonmetro Kansas: Kansas total less Metropolitan Areas as defined by the Office of Management and Budget (OMB; released 3/6/2020). Per 1000: For nonmoney amounts, Per 1000=(county value / county population for the same year as the data) x 1000. \$ Per capita=(county value / county population for the same year as the data). Value= . indicates missing or suppressed data or value not calculated.

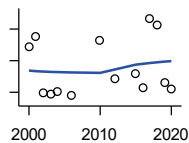
Business

**TOTAL ANNUAL PAYROLL(\$000):
RETAIL TRADE**



U.S. Census Bureau, County Business Patterns. Beginning with the 2017 data, any tabulation with fewer than 3 establishments were omitted from the release. Data for these establishments are included in the broader total.

Year	County	State of Kansas	Non Metro Kansas	County Rank	Per 1000 or \$ Per Capita
2000	10,658	2,747,001	.	.	1,104.8
2001	10,588	2,813,226	.	.	1,105.3
2002	10,849	2,854,231	.	.	1,122.0
2003	13,254	2,773,674	.	.	1,384.2
2004	13,715	2,847,826	.	.	1,444.9
2005	13,698	2,952,196	.	.	1,424.2
2006	14,087	3,126,495	.	.	1,458.6
2007	15,681	3,201,169	.	.	1,616.9
2008	17,090	3,261,054	.	.	1,764.8
2009	16,171	3,232,246	.	.	1,672.5
2010	16,590	3,321,838	.	.	1,718.1
2011	16,692	3,384,607	.	.	1,730.8
2012	18,299	3,409,755	.	.	1,875.3
2013	17,427	3,483,752	.	.	1,782.3
2014	17,392	3,617,933	.	.	1,780.5
2015	18,384	3,712,165	.	.	1,895.8
2016	17,492	3,826,889	.	.	1,830.3
2017	16,260	3,797,849	.	.	1,711.6
2018	16,528	3,818,988	.	.	1,769.6
2019	17,012	3,908,994	.	.	1,856.4
2020	17,073	3,984,443	.	.	1,864.5



**TOTAL ANNUAL PAYROLL(\$000):
TRANSPORTATION &
WAREHOUSING**

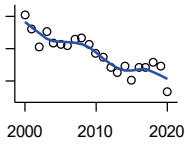
U.S. Census Bureau, County Business Patterns. Beginning with the 2017 data, any tabulation with fewer than 3 establishments were omitted from the release. Data for these establishments are included in the broader total.

Year	County	State of Kansas	Non Metro Kansas	County Rank	Per 1000 or \$ Per Capita
2000	3,440	1,044,835	.	.	356.6
2001	3,757	1,089,405	.	.	392.2
2002	1,986	1,094,636	.	.	205.4
2003	1,952	1,316,655	.	.	203.9
2004	2,021	1,439,800	.	.	212.9
2005	.	1,393,651	.	.	.
2006	1,886	1,528,551	.	.	195.3
2007	.	1,788,267	.	.	.
2008	.	1,722,697	.	.	.
2009	.	1,618,598	.	.	.
2010	3,637	1,735,761	.	.	376.7
2011	.	1,739,165	.	.	.
2012	2,433	1,984,976	.	.	249.3
2013	.	2,006,261	.	.	.
2014	.	2,097,377	.	.	.
2015	2,603	2,190,072	.	.	268.4
2016	2,159	2,202,859	.	.	225.9
2017	4,333	2,546,061	.	.	456.1
2018	4,137	2,663,188	.	.	442.9
2019	2,322	2,879,406	.	.	253.4
2020	2,092	2,962,461	.	.	228.5

County: county value. Kansas: state value. County Rank: highest county value ranked #1. (\$000): thousands of dollars. Nonmetro Kansas: Kansas total less Metropolitan Areas as defined by the Office of Management and Budget (OMB; released 3/6/2020). Per 1000: For nonmoney amounts, Per 1000=(county value / county population for the same year as the data) x 1000. \$ Per capita=(county value / county population for the same year as the data). Value= . indicates missing or suppressed data or value not calculated.

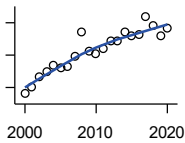
Business

**TOTAL ANNUAL PAYROLL(\$000):
INFORMATION**



U.S. Census Bureau, County Business Patterns. Beginning with the 2017 data, any tabulation with fewer than 3 establishments were omitted from the release. Data for these establishments are included in the broader total.

Year	County	State of Kansas	Non Metro Kansas	County Rank	Per 1000 or \$ Per Capita
2000	1,819	1,923,381	.	.	188.6
2001	1,638	2,218,610	.	.	171.0
2002	1,426	2,298,108	.	.	147.5
2003	1,609	2,378,673	.	.	168.0
2004	1,464	2,392,990	.	.	154.2
2005	1,461	2,395,081	.	.	151.9
2006	1,434	2,586,483	.	.	148.5
2007	1,511	2,594,138	.	.	155.8
2008	1,526	3,043,244	.	.	157.6
2009	1,450	3,045,570	.	.	150.0
2010	1,343	2,481,580	.	.	139.1
2011	1,287	2,513,805	.	.	133.5
2012	1,172	2,535,555	.	.	120.1
2013	1,101	2,805,017	.	.	112.6
2014	1,182	2,393,609	.	.	121.0
2015	1,016	2,406,323	.	.	104.8
2016	1,162	2,080,211	.	.	121.6
2017	1,162	2,090,021	.	.	122.3
2018	1,238	2,341,543	.	.	132.5
2019	1,181	2,133,891	.	.	128.9
2020	861	2,245,204	.	.	94.0



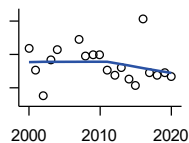
**TOTAL ANNUAL PAYROLL(\$000):
FINANCE & INSURANCE**

U.S. Census Bureau, County Business Patterns. Beginning with the 2017 data, any tabulation with fewer than 3 establishments were omitted from the release. Data for these establishments are included in the broader total.

Year	County	State of Kansas	Non Metro Kansas	County Rank	Per 1000 or \$ Per Capita
2000	4,603	2,083,565	.	.	477.1
2001	5,057	2,129,587	.	.	527.9
2002	5,657	2,414,120	.	.	585.1
2003	5,962	2,608,579	.	.	622.7
2004	6,388	2,676,910	.	.	673.0
2005	6,202	2,786,136	.	.	644.8
2006	6,332	2,928,931	.	.	655.6
2007	6,933	3,096,017	.	.	714.9
2008	8,442	3,322,977	.	.	871.7
2009	7,273	3,206,839	.	.	752.2
2010	7,090	3,211,300	.	.	734.3
2011	7,380	3,404,633	.	.	765.2
2012	7,883	3,611,165	.	.	807.8
2013	7,848	3,896,051	.	.	802.6
2014	8,394	4,044,315	.	.	859.3
2015	8,157	4,113,060	.	.	841.2
2016	8,259	4,180,740	.	.	864.2
2017	9,385	4,258,057	.	.	987.9
2018	8,837	4,682,552	.	.	946.1
2019	8,225	4,814,201	.	.	897.5
2020	8,636	5,288,529	.	.	943.1

County: county value. Kansas: state value. County Rank: highest county value ranked #1. (\$000): thousands of dollars. Nonmetro Kansas: Kansas total less Metropolitan Areas as defined by the Office of Management and Budget (OMB; released 3/6/2020). Per 1000: For nonmoney amounts, Per 1000=(county value / county population for the same year as the data) x 1000. \$ Per capita=(county value / county population for the same year as the data). Value= . indicates missing or suppressed data or value not calculated.

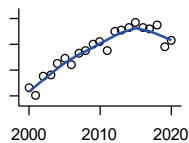
Business



**TOTAL ANNUAL PAYROLL(\$000):
REAL ESTATE, RENTAL, AND
LEASING**

U.S. Census Bureau, County Business Patterns. Beginning with the 2017 data, any tabulation with fewer than 3 establishments were omitted from the release. Data for these establishments are included in the broader total.

Year	County	State of Kansas	Non Metro Kansas	County Rank	Per 1000 or \$ Per Capita
2000	879	360,637	.	.	91.1
2001	609	397,371	.	.	63.6
2002	299	403,695	.	.	30.9
2003	736	437,786	.	.	76.9
2004	854	430,719	.	.	90.0
2005	.	465,149	.	.	.
2006	.	478,811	.	.	.
2007	978	452,969	.	.	100.8
2008	773	484,149	.	.	79.8
2009	801	450,884	.	.	82.8
2010	793	487,255	.	.	82.1
2011	608	535,120	.	.	63.0
2012	544	531,039	.	.	55.7
2013	635	538,796	.	.	64.9
2014	505	542,307	.	.	51.7
2015	435	595,030	.	.	44.9
2016	1,227	607,668	.	.	128.4
2017	587	590,373	.	.	61.8
2018	554	600,037	.	.	59.3
2019	580	622,881	.	.	63.3
2020	537	670,656	.	.	58.6



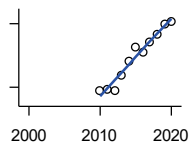
**TOTAL ANNUAL PAYROLL(\$000):
PROFESSIONAL, SCIENTIFIC, AND
TECHNICAL SERVICES**

U.S. Census Bureau, County Business Patterns. Beginning with the 2017 data, any tabulation with fewer than 3 establishments were omitted from the release. Data for these establishments are included in the broader total.

Year	County	State of Kansas	Non Metro Kansas	County Rank	Per 1000 or \$ Per Capita
2000	2,311	2,057,313	.	.	239.6
2001	2,035	2,152,937	.	.	212.4
2002	2,764	2,150,085	.	.	285.9
2003	2,818	2,052,712	.	.	294.3
2004	3,259	2,531,457	.	.	343.3
2005	3,472	2,418,500	.	.	361.0
2006	3,198	2,655,690	.	.	331.1
2007	3,638	2,901,544	.	.	375.1
2008	3,758	2,903,802	.	.	388.1
2009	4,008	3,071,611	.	.	414.5
2010	4,126	3,037,182	.	.	427.3
2011	3,743	3,132,082	.	.	388.1
2012	4,506	3,455,548	.	.	461.8
2013	4,545	3,777,729	.	.	464.8
2014	4,667	3,981,580	.	.	477.8
2015	4,853	4,039,074	.	.	500.5
2016	4,627	4,125,507	.	.	484.1
2017	4,608	4,158,858	.	.	485.1
2018	4,769	4,314,317	.	.	510.6
2019	3,901	4,646,644	.	.	425.7
2020	4,152	4,927,611	.	.	453.4

County: county value. Kansas: state value. County Rank: highest county value ranked #1. (\$000): thousands of dollars. Nonmetro Kansas: Kansas total less Metropolitan Areas as defined by the Office of Management and Budget (OMB; released 3/6/2020). Per 1000: For nonmoney amounts, Per 1000=(county value / county population for the same year as the data) x 1000. \$ Per capita=(county value / county population for the same year as the data). Value= . indicates missing or suppressed data or value not calculated.

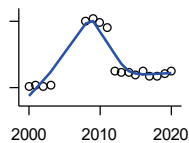
Business



**TOTAL ANNUAL PAYROLL(\$000):
MANAGEMENT OF COMPANIES AND
ENTERPRISES**

U.S. Census Bureau, County Business Patterns. Beginning with the 2017 data, any tabulation with fewer than 3 establishments were omitted from the release. Data for these establishments are included in the broader total.

Year	County	State of Kansas	Non Metro Kansas	County Rank	Per 1000 or \$ Per Capita
2000	.	1,362,735	.	.	.
2001	.	1,279,253	.	.	.
2002	.	1,311,368	.	.	.
2003	.	1,352,119	.	.	.
2004	.	1,378,891	.	.	.
2005	.	1,510,876	.	.	.
2006	.	1,626,320	.	.	.
2007	.	2,233,654	.	.	.
2008	.	1,848,656	.	.	.
2009	.	1,601,158	.	.	.
2010	2,935	2,003,048	.	.	304.0
2011	2,965	1,677,619	.	.	307.4
2012	2,931	1,834,430	.	.	300.4
2013	3,271	1,938,100	.	.	334.5
2014	3,603	2,117,232	.	.	368.9
2015	3,940	2,451,126	.	.	406.3
2016	3,815	2,167,620	.	.	399.2
2017	4,072	2,224,567	.	.	428.6
2018	4,257	2,470,094	.	.	455.8
2019	4,499	2,757,300	.	.	490.9
2020	4,563	2,578,116	.	.	498.3



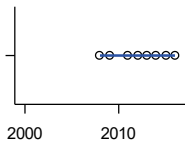
**TOTAL ANNUAL PAYROLL(\$000):
ADMIN, SUPPORT, WASTE MGMT.,
AND REMEDIATION**

U.S. Census Bureau, County Business Patterns. Beginning with the 2017 data, any tabulation with fewer than 3 establishments were omitted from the release. Data for these establishments are included in the broader total.

Year	County	State of Kansas	Non Metro Kansas	County Rank	Per 1000 or \$ Per Capita
2000	65	1,388,712	.	.	6.7
2001	85	1,416,480	.	.	8.9
2002	50	1,378,905	.	.	5.2
2003	124	1,387,061	.	.	13.0
2004	.	1,544,442	.	.	.
2005	.	1,694,687	.	.	.
2006	.	1,800,846	.	.	.
2007	.	1,978,025	.	.	.
2008	3,011	2,096,864	.	.	310.9
2009	3,125	1,832,540	.	.	323.2
2010	2,940	2,117,325	.	.	304.5
2011	2,737	2,114,970	.	.	283.8
2012	725	2,230,250	.	.	74.3
2013	673	2,214,320	.	.	68.8
2014	681	2,444,170	.	.	69.7
2015	583	2,577,592	.	.	60.1
2016	719	2,760,706	.	.	75.2
2017	493	3,026,927	.	.	51.9
2018	529	3,007,347	.	.	56.6
2019	612	3,075,485	.	.	66.8
2020	772	3,250,046	.	.	84.3

County: county value. Kansas: state value. County Rank: highest county value ranked #1. (\$000): thousands of dollars. Nonmetro Kansas: Kansas total less Metropolitan Areas as defined by the Office of Management and Budget (OMB; released 3/6/2020). Per 1000: For nonmoney amounts, Per 1000=(county value / county population for the same year as the data) x 1000. \$ Per capita=(county value / county population for the same year as the data). Value= . indicates missing or suppressed data or value not calculated.

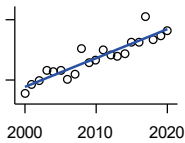
Business



**TOTAL ANNUAL PAYROLL(\$000):
EDUCATIONAL SERVICES**

U.S. Census Bureau, County Business Patterns. Beginning with the 2017 data, any tabulation with fewer than 3 establishments were omitted from the release. Data for these establishments are included in the broader total.

Year	County	State of Kansas	Non Metro Kansas	County Rank	Per 1000 or \$ Per Capita
2000	.	299,843	.	.	.
2001	.	320,606	.	.	.
2002	.	353,531	.	.	.
2003	.	350,814	.	.	.
2004	.	361,644	.	.	.
2005	.	375,781	.	.	.
2006	.	400,565	.	.	.
2007	.	414,233	.	.	.
2008	0	463,210	.	.	0.0
2009	0	468,856	.	.	0.0
2010	.	487,670	.	.	.
2011	0	504,964	.	.	0.0
2012	0	508,448	.	.	0.0
2013	0	553,995	.	.	0.0
2014	0	612,073	.	.	0.0
2015	0	579,794	.	.	0.0
2016	0	571,582	.	.	0.0



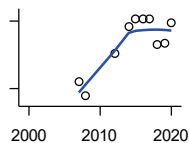
**TOTAL ANNUAL PAYROLL(\$000):
HEALTH CARE AND SOCIAL ASSISTANCE**

U.S. Census Bureau, County Business Patterns. Beginning with the 2017 data, any tabulation with fewer than 3 establishments were omitted from the release. Data for these establishments are included in the broader total.

Year	County	State of Kansas	Non Metro Kansas	County Rank	Per 1000 or \$ Per Capita
2000	16,548	4,120,595	.	.	1,715.4
2001	18,902	4,445,027	.	.	1,973.3
2002	19,919	4,705,220	.	.	2,060.1
2003	22,534	4,939,323	.	.	2,353.4
2004	22,162	5,232,394	.	.	2,334.8
2005	22,270	5,487,089	.	.	2,315.5
2006	20,323	5,814,218	.	.	2,104.3
2007	21,300	6,186,471	.	.	2,196.3
2008	27,887	6,490,627	.	.	2,879.7
2009	24,459	6,749,962	.	.	2,529.6
2010	25,068	6,871,727	.	.	2,596.1
2011	27,360	7,129,655	.	.	2,837.0
2012	26,148	7,614,853	.	.	2,679.6
2013	25,840	7,541,515	.	.	2,642.7
2014	26,648	7,733,621	.	.	2,728.1
2015	29,301	7,969,650	.	.	3,021.7
2016	29,329	8,018,706	.	.	3,068.9
2017	35,794	8,384,998	.	.	3,767.8
2018	29,938	8,637,619	.	.	3,205.4
2019	30,950	8,854,414	.	.	3,377.3
2020	32,237	9,309,269	.	.	3,520.5

County: county value. Kansas: state value. County Rank: highest county value ranked #1. (\$000): thousands of dollars. Nonmetro Kansas: Kansas total less Metropolitan Areas as defined by the Office of Management and Budget (OMB; released 3/6/2020). Per 1000: For nonmoney amounts, Per 1000=(county value / county population for the same year as the data) x 1000. \$ Per capita=(county value / county population for the same year as the data). Value= . indicates missing or suppressed data or value not calculated.

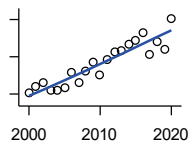
Business



**TOTAL ANNUAL PAYROLL(\$000):
ARTS, ENTERTAINMENT, AND
RECREATION**

U.S. Census Bureau, County Business Patterns. Beginning with the 2017 data, any tabulation with fewer than 3 establishments were omitted from the release. Data for these establishments are included in the broader total.

Year	County	State of Kansas	Non Metro Kansas	County Rank	Per 1000 or \$ Per Capita
2000	.	195,784	.	.	.
2001	.	203,511	.	.	.
2002	.	206,204	.	.	.
2003	.	185,049	.	.	.
2004	.	190,742	.	.	.
2005	.	196,594	.	.	.
2006	.	201,049	.	.	.
2007	229	220,435	.	.	23.6
2008	166	236,986	.	.	17.1
2009	.	237,116	.	.	.
2010	.	233,285	.	.	.
2011	.	234,351	.	.	.
2012	355	254,169	.	.	36.4
2013	.	278,474	.	.	.
2014	478	289,103	.	.	48.9
2015	507	300,253	.	.	52.3
2016	507	312,902	.	.	53.1
2017	510	323,153	.	.	53.7
2018	397	325,454	.	.	42.5
2019	401	335,362	.	.	43.8
2020	494	298,119	.	.	53.9



**TOTAL ANNUAL PAYROLL(\$000):
ACCOMMODATION AND FOOD
SERVICES**

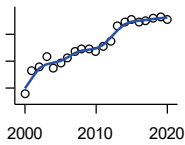
U.S. Census Bureau, County Business Patterns. Beginning with the 2017 data, any tabulation with fewer than 3 establishments were omitted from the release. Data for these establishments are included in the broader total.

Year	County	State of Kansas	Non Metro Kansas	County Rank	Per 1000 or \$ Per Capita
2000	3,094	926,831	.	.	320.7
2001	3,430	960,196	.	.	358.1
2002	3,580	930,510	.	.	370.3
2003	3,207	992,313	.	.	334.9
2004	3,170	1,046,901	.	.	334.0
2005	3,316	1,101,854	.	.	344.8
2006	4,129	1,185,280	.	.	427.5
2007	3,584	1,431,100	.	.	369.6
2008	4,206	1,271,594	.	.	434.3
2009	4,681	1,283,065	.	.	484.1
2010	3,999	1,296,556	.	.	414.1
2011	4,843	1,364,281	.	.	502.2
2012	5,284	1,388,337	.	.	541.5
2013	5,330	1,476,335	.	.	545.1
2014	5,658	1,572,021	.	.	579.2
2015	5,912	1,640,144	.	.	609.7
2016	6,306	1,709,193	.	.	659.8
2017	5,137	1,824,791	.	.	540.7
2018	5,819	1,880,364	.	.	623.0
2019	5,380	1,958,603	.	.	587.1
2020	7,054	1,745,238	.	.	770.3

County: county value. Kansas: state value. County Rank: highest county value ranked #1. (\$000): thousands of dollars. Nonmetro Kansas: Kansas total less Metropolitan Areas as defined by the Office of Management and Budget (OMB; released 3/6/2020). Per 1000: For nonmoney amounts, Per 1000=(county value / county population for the same year as the data) x 1000. \$ Per capita=(county value / county population for the same year as the data). Value= . indicates missing or suppressed data or value not calculated.

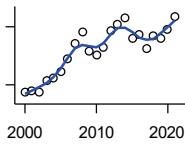
Business

**TOTAL ANNUAL PAYROLL(\$000):
OTHER SERVICES**



U.S. Census Bureau, County Business Patterns. Beginning with the 2017 data, any tabulation with fewer than 3 establishments were omitted from the release. Data for these establishments are included in the broader total.

Year	County	State of Kansas	Non Metro Kansas	County Rank	Per 1000 or \$ Per Capita
2000	2,385	965,540	.	.	247.2
2001	2,818	996,716	.	.	294.2
2002	2,894	1,007,464	.	.	299.3
2003	3,075	979,466	.	.	321.1
2004	2,873	970,383	.	.	302.7
2005	2,970	1,005,537	.	.	308.8
2006	3,071	1,055,932	.	.	318.0
2007	3,185	1,141,551	.	.	328.4
2008	3,231	1,184,016	.	.	333.6
2009	3,228	1,167,154	.	.	333.9
2010	3,171	1,170,201	.	.	328.4
2011	3,275	1,173,775	.	.	339.6
2012	3,367	1,217,210	.	.	345.1
2013	3,663	1,254,933	.	.	374.6
2014	3,720	1,305,563	.	.	380.8
2015	3,784	1,341,075	.	.	390.2
2016	3,722	1,351,375	.	.	389.5
2017	3,744	1,344,179	.	.	394.1
2018	3,809	1,382,801	.	.	407.8
2019	3,825	1,427,711	.	.	417.4
2020	3,787	1,420,859	.	.	413.6



**NOMINAL TAXABLE RETAIL SALES
(million\$)**

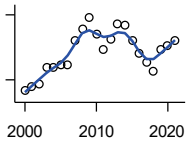
Kansas Department of Revenue

Year	County	State of Kansas	Non Metro Kansas	County Rank	Per 1000 or \$ Per Capita
2000	112.9	30,119.0	8,831.7	31	11.7
2001	113.9	30,202.2	8,700.3	31	11.9
2002	112.5	29,380.8	8,241.5	30	11.6
2003	123.8	30,694.0	8,710.6	30	12.9
2004	127.0	31,922.6	9,062.5	31	13.4
2005	133.0	32,924.2	9,386.6	31	13.8
2006	146.2	34,937.6	10,042.1	30	15.1
2007	162.8	36,180.1	10,553.2	29	16.8
2008	174.2	37,559.5	11,126.9	29	18.0
2009	154.8	35,211.8	10,351.5	30	16.0
2010	150.6	35,655.7	10,606.1	31	15.6
2011	159.3	37,257.0	11,153.5	31	16.5
2012	175.5	38,988.8	11,749.1	31	18.0
2013	182.9	40,009.0	11,993.8	29	18.7
2014	189.4	41,299.0	12,365.4	29	19.4
2015	167.8	41,635.8	11,747.6	31	17.3
2016	171.4	42,040.2	11,523.5	31	17.9
2017	157.7	41,940.1	11,449.9	32	16.6
2018	170.5	42,732.3	11,643.9	31	18.3
2019	168.6	43,732.5	12,062.7	33	18.4
2020	177.0	43,689.9	12,331.7	31	19.3
2021	190.6	48,532.8	13,413.0	33	20.8

County: county value. Kansas: state value. County Rank: highest county value ranked #1. (\$000): thousands of dollars. Nonmetro Kansas: Kansas total less Metropolitan Areas as defined by the Office of Management and Budget (OMB; released 3/6/2020). Per 1000: For nonmoney amounts, Per 1000=(county value / county population for the same year as the data) x 1000. \$ Per capita=(county value / county population for the same year as the data). Value= . indicates missing or suppressed data or value not calculated.

Business

RETAIL PULL FACTOR



Kansas Direct Program, Kansas State University Cooperative Extension Service (1980-1999); Kansas Department of Revenue (2000-)

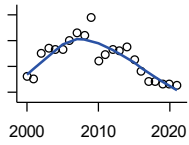
Year	County	State of Kansas	Non Metro Kansas	County Rank	Per 1000 or \$ Per Capita
2000	1.05	.	.	12	.
2001	1.07	.	.	11	.
2002	1.08	.	.	10	.
2003	1.16	.	.	9	.
2004	1.16	.	.	8	.
2005	1.17	.	.	7	.
2006	1.17	.	.	7	.
2007	1.28	.	.	7	.
2008	1.33	.	.	6	.
2009	1.39	.	.	5	.
2010	1.31	.	.	6	.
2011	1.24	.	.	11	.
2012	1.29	.	.	11	.
2013	1.36	.	.	8	.
2014	1.35	.	.	10	.
2015	1.28	.	.	9	.
2016	1.22	.	.	9	.
2017	1.18	.	.	8	.
2018	1.14	.	.	8	.
2019	1.24	.	.	7	.
2020	1.26	.	.	8	.
2021	1.28	.	.	7	.

County: county value. Kansas: state value. County Rank: highest county value ranked #1. (\$000): thousands of dollars. Nonmetro Kansas: Kansas total less Metropolitan Areas as defined by the Office of Management and Budget (OMB; released 3/6/2020). Per 1000: For nonmoney amounts, Per 1000=(county value / county population for the same year as the data) x 1000. \$ Per capita=(county value / county population for the same year as the data). Value= . indicates missing or suppressed data or value not calculated.

Employment

CIVILIAN LABOR FORCE (BLS-Place of Residence; 1990-)

U.S. Department of Labor, Bureau of Labor Statistics (BLS)



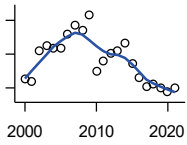
Year	County	State of Kansas	Non Metro Kansas	County Rank	Per 1000 or \$ Per Capita
2000	5,046	1,402,606	482,229	43	523.1
2001	5,015	1,398,521	475,280	42	523.5
2002	5,410	1,419,335	482,428	40	559.5
2003	5,478	1,441,065	490,161	41	572.1
2004	5,463	1,458,910	494,509	42	575.5
2005	5,467	1,458,767	490,047	41	568.4
2006	5,609	1,467,553	498,594	43	580.8
2007	5,714	1,485,414	497,048	39	589.2
2008	5,683	1,493,365	504,522	41	586.8
2009	5,962	1,512,572	516,311	40	616.6
2010	5,290	1,500,463	492,594	41	547.8
2011	5,390	1,498,000	492,563	41	558.9
2012	5,457	1,490,808	489,349	40	559.2
2013	5,451	1,489,395	485,484	42	557.5
2014	5,508	1,494,203	481,813	40	563.9
2015	5,305	1,493,782	477,546	42	547.1
2016	5,128	1,491,961	468,258	42	536.6
2017	4,972	1,488,346	461,063	42	523.4
2018	4,972	1,488,027	456,866	42	532.3
2019	4,928	1,497,517	455,858	42	537.8
2020	4,921	1,493,706	452,935	42	537.4
2021	4,913	1,495,665	453,398	42	535.1

County: county value. Kansas: state value. County Rank: highest county value ranked #1. (\$000): thousands of dollars. Nonmetro Kansas: Kansas total less Metropolitan Areas as defined by the Office of Management and Budget (OMB; released 3/6/2020). Per 1000: For nonmoney amounts, Per 1000=(county value / county population for the same year as the data) x 1000. \$ Per capita=(county value / county population for the same year as the data). Value= . indicates missing or suppressed data or value not calculated.

Employment

EMPLOYED (BLS-Place of Residence; 1990-)

U.S. Department of Labor, Bureau of Labor Statistics (BLS)



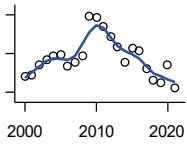
Year	County	State of Kansas	Non Metro Kansas	County Rank	Per 1000 or \$ Per Capita
2000	4,906	1,349,841	464,962	43	508.6
2001	4,871	1,338,775	455,154	42	508.5
2002	5,239	1,347,163	461,241	39	541.8
2003	5,294	1,361,115	467,622	40	552.9
2004	5,268	1,378,355	470,330	41	555.0
2005	5,270	1,384,654	467,722	41	547.9
2006	5,441	1,402,950	479,174	41	563.4
2007	5,536	1,422,109	477,983	39	570.8
2008	5,488	1,425,022	484,056	41	566.7
2009	5,665	1,408,142	485,797	40	585.9
2010	4,998	1,396,172	461,635	41	517.6
2011	5,121	1,402,198	463,723	41	531.0
2012	5,212	1,405,638	463,376	40	534.1
2013	5,235	1,410,470	461,405	40	535.4
2014	5,331	1,426,892	461,797	40	545.8
2015	5,091	1,431,533	457,899	42	525.0
2016	4,920	1,431,920	449,356	42	514.8
2017	4,811	1,434,516	445,003	42	506.4
2018	4,840	1,439,329	442,716	42	518.2
2019	4,805	1,450,705	442,108	42	524.3
2020	4,751	1,408,965	433,229	42	518.8
2021	4,803	1,447,323	441,159	42	523.1

County: county value. Kansas: state value. County Rank: highest county value ranked #1. (\$000): thousands of dollars. Nonmetro Kansas: Kansas total less Metropolitan Areas as defined by the Office of Management and Budget (OMB; released 3/6/2020). Per 1000: For nonmoney amounts, Per 1000=(county value / county population for the same year as the data) x 1000. \$ Per capita=(county value / county population for the same year as the data). Value= . indicates missing or suppressed data or value not calculated.

Employment

UNEMPLOYED (BLS-Place of Residence; 1990-)

U.S. Department of Labor, Bureau of Labor Statistics (BLS)

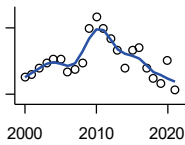


Year	County	State of Kansas	Non Metro Kansas	County Rank	Per 1000 or \$ Per Capita
2000	140	52,765	17,267	52	14.5
2001	144	59,746	20,126	52	15.0
2002	171	72,172	21,187	51	17.7
2003	184	79,950	22,539	50	19.2
2004	195	80,555	24,179	51	20.5
2005	197	74,113	22,325	49	20.5
2006	168	64,603	19,420	49	17.4
2007	178	63,305	19,065	47	18.4
2008	195	68,343	20,466	47	20.1
2009	297	104,430	30,514	46	30.7
2010	292	104,291	30,959	45	30.2
2011	269	95,802	28,840	46	27.9
2012	245	85,170	25,973	45	25.1
2013	216	78,925	24,079	46	22.1
2014	177	67,311	20,016	48	18.1
2015	214	62,249	19,647	42	22.1
2016	208	60,041	18,902	42	21.8
2017	161	53,830	16,060	45	16.9
2018	132	48,698	14,150	46	14.1
2019	123	46,812	13,750	47	13.4
2020	170	84,741	19,706	44	18.6
2021	110	48,342	12,239	45	12.0

County: county value. Kansas: state value. County Rank: highest county value ranked #1. (\$000): thousands of dollars. Nonmetro Kansas: Kansas total less Metropolitan Areas as defined by the Office of Management and Budget (OMB; released 3/6/2020). Per 1000: For nonmoney amounts, Per 1000=(county value / county population for the same year as the data) x 1000. \$ Per capita=(county value / county population for the same year as the data). Value= . indicates missing or suppressed data or value not calculated.

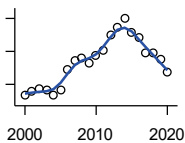
Employment

UNEMPLOYMENT RATE (BLS-Place of Residence; 1990-)



U.S. Department of Labor, Bureau of Labor Statistics (BLS)

Year	County	State of Kansas	Non Metro Kansas	County Rank	Per 1000 or \$ Per Capita
2000	2.8	3.8	3.6	86	.
2001	2.9	4.3	4.2	93	.
2002	3.2	5.1	4.4	86	.
2003	3.4	5.5	4.6	82	.
2004	3.6	5.5	4.9	92	.
2005	3.6	5.1	4.6	84	.
2006	3.0	4.4	3.9	92	.
2007	3.1	4.3	3.8	86	.
2008	3.4	4.6	4.1	70	.
2009	5.0	6.9	5.9	58	.
2010	5.5	7.0	6.3	52	.
2011	5.0	6.4	5.9	55	.
2012	4.5	5.7	5.3	57	.
2013	4.0	5.3	5.0	67	.
2014	3.2	4.5	4.2	78	.
2015	4.0	4.2	4.1	45	.
2016	4.1	4.0	4.0	40	.
2017	3.2	3.6	3.5	58	.
2018	2.7	3.3	3.1	65	.
2019	2.5	3.1	3.0	80	.
2020	3.5	5.7	4.4	60	.
2021	2.2	3.2	2.7	69	.



BEA EMPLOYMENT: TOTAL (Place of Work)

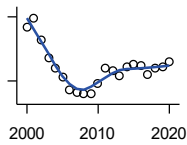
U.S. Bureau of Economic Analysis, Regional Economic Information System (REIS)

Year	County	State of Kansas	Non Metro Kansas	County Rank	Per 1000 or \$ Per Capita
2000	6,329	1,760,312	604,361	40	656.1
2001	6,386	1,767,601	592,672	40	666.7
2002	6,430	1,746,077	585,387	40	665.0
2003	6,409	1,733,694	577,860	40	669.3
2004	6,338	1,750,876	578,750	40	667.7
2005	6,423	1,765,650	577,562	40	667.8
2006	6,730	1,795,507	583,041	40	696.8
2007	6,865	1,844,355	591,924	39	707.9
2008	6,902	1,858,069	594,368	38	712.7
2009	6,825	1,813,184	580,972	38	705.9
2010	6,936	1,801,873	579,758	37	718.3
2011	7,018	1,819,044	583,725	36	727.7
2012	7,258	1,841,393	591,748	36	743.8
2013	7,356	1,869,054	597,236	36	752.3
2014	7,503	1,895,859	601,291	36	768.1
2015	7,295	1,910,954	598,589	36	752.3
2016	7,213	1,916,152	592,580	36	754.7
2017	6,982	1,914,179	584,337	36	734.9
2018	6,974	1,926,242	580,213	37	746.7
2019	6,875	1,925,204	574,496	38	750.2
2020	6,679	1,851,247	556,671	37	729.4

County: county value. Kansas: state value. County Rank: highest county value ranked #1. (\$000): thousands of dollars. Nonmetro Kansas: Kansas total less Metropolitan Areas as defined by the Office of Management and Budget (OMB; released 3/6/2020). Per 1000: For nonmoney amounts, Per 1000=(county value / county population for the same year as the data) x 1000. \$ Per capita=(county value / county population for the same year as the data). Value= . indicates missing or suppressed data or value not calculated.

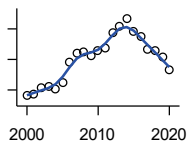
Employment

BEA EMPLOYMENT: FARM



U.S. Bureau of Economic Analysis,
Regional Economic Information System
(REIS)

Year	County	State of Kansas	Non Metro Kansas	County Rank	Per 1000 or \$ Per Capita
2000	676	77,477	59,088	47	70.1
2001	698	78,177	59,647	44	72.9
2002	646	70,532	53,893	42	66.8
2003	605	68,516	52,099	45	63.2
2004	581	67,586	51,246	47	61.2
2005	559	66,829	50,386	48	58.1
2006	529	64,910	48,728	50	54.8
2007	522	65,639	49,037	52	53.8
2008	519	63,820	47,682	51	53.6
2009	521	62,798	46,960	49	53.9
2010	545	63,882	47,984	50	56.4
2011	579	65,761	49,707	48	60.0
2012	574	63,753	48,167	47	58.8
2013	561	62,739	47,255	47	57.4
2014	583	64,308	48,722	47	59.7
2015	590	64,416	48,927	45	60.8
2016	585	63,840	48,539	46	61.2
2017	565	61,876	46,936	45	59.5
2018	580	63,233	48,069	46	62.1
2019	582	63,300	48,167	46	63.5
2020	594	64,281	49,038	45	64.9



BEA EMPLOYMENT: NON-FARM

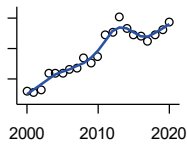
U.S. Bureau of Economic Analysis,
Regional Economic Information System
(REIS)

Year	County	State of Kansas	Non Metro Kansas	County Rank	Per 1000 or \$ Per Capita
2000	5,653	1,682,835	545,273	39	586.0
2001	5,688	1,689,424	533,025	37	593.8
2002	5,784	1,675,545	531,494	37	598.2
2003	5,804	1,665,178	525,761	37	606.2
2004	5,757	1,683,290	527,504	39	606.5
2005	5,864	1,698,821	527,176	38	609.7
2006	6,201	1,730,597	534,313	36	642.1
2007	6,343	1,778,716	542,887	36	654.1
2008	6,383	1,794,249	546,686	36	659.1
2009	6,304	1,750,386	534,012	36	652.0
2010	6,391	1,737,991	531,774	36	661.9
2011	6,439	1,753,283	534,018	35	667.7
2012	6,684	1,777,640	543,581	35	685.0
2013	6,795	1,806,315	549,981	35	694.9
2014	6,920	1,831,551	552,569	35	708.4
2015	6,705	1,846,538	549,662	36	691.5
2016	6,628	1,852,312	544,041	36	693.5
2017	6,417	1,852,303	537,401	37	675.5
2018	6,394	1,863,009	532,144	37	684.6
2019	6,293	1,861,904	526,329	37	686.7
2020	6,085	1,786,966	507,633	36	664.5

County: county value. Kansas: state value. County Rank: highest county value ranked #1. (\$000): thousands of dollars. Nonmetro Kansas: Kansas total less Metropolitan Areas as defined by the Office of Management and Budget (OMB; released 3/6/2020). Per 1000: For nonmoney amounts, Per 1000=(county value / county population for the same year as the data) x 1000. \$ Per capita=(county value / county population for the same year as the data). Value= . indicates missing or suppressed data or value not calculated.

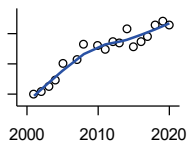
Employment

AVERAGE WAGE PER JOB (\$)



U.S. Bureau of Economic Analysis,
Regional Economic Information System
(REIS)

Year	County	State of Kansas	Non Metro Kansas	County Rank	Per 1000 or \$ Per Capita
2000	26,163	31,854	24,396	25	.
2001	25,652	32,859	26,379	43	.
2002	26,420	33,707	26,331	32	.
2003	31,872	35,078	28,911	20	.
2004	32,000	35,932	29,747	22	.
2005	32,046	37,467	31,646	34	.
2006	32,989	40,038	31,993	27	.
2007	33,422	41,500	33,484	42	.
2008	37,107	44,197	36,256	36	.
2009	35,119	43,860	35,739	41	.
2010	37,411	45,370	38,631	45	.
2011	44,519	48,280	42,324	41	.
2012	45,135	50,549	42,015	36	.
2013	50,422	52,629	46,073	36	.
2014	46,784	51,959	43,562	31	.
2015	44,330	52,250	42,320	33	.
2016	44,019	51,664	41,964	35	.
2017	42,478	53,007	42,137	39	.
2018	44,373	54,790	44,514	36	.
2019	46,339	56,956	45,336	34	.
2020	48,835	60,597	49,183	40	.



BEA EMPLOYMENT: FORESTRY, FISHING, HUNTING, AND AG SUPPORT

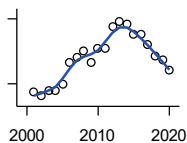
U.S. Bureau of Economic Analysis,
Regional Economic Information System
(REIS)

Year	County	State of Kansas	Non Metro Kansas	County Rank	Per 1000 or \$ Per Capita
2001	80	7,059	.	11	.
2002	84	8,045	.	11	.
2003	90	7,313	.	10	.
2004	99	7,623	.	7	.
2005	121	7,962	.	8	.
2006	.	7,748	.	.	.
2007	125	8,228	.	8	.
2008	146	8,646	.	7	.
2009	.	8,982	.	.	.
2010	145	9,251	.	8	.
2011	140	9,410	.	8	.
2012	149	9,691	.	8	.
2013	148	10,014	.	11	.
2014	167	10,708	.	10	.
2015	143	10,020	.	11	.
2016	150	10,383	.	12	.
2017	157	10,693	.	10	.
2018	171	11,103	.	7	.
2019	176	10,768	.	12	.
2020	171	10,529	.	12	.

County: county value. Kansas: state value. County Rank: highest county value ranked #1. (\$000): thousands of dollars. Nonmetro Kansas: Kansas total less Metropolitan Areas as defined by the Office of Management and Budget (OMB; released 3/6/2020). Per 1000: For nonmoney amounts, Per 1000=(county value / county population for the same year as the data) x 1000. \$ Per capita=(county value / county population for the same year as the data). Value= . indicates missing or suppressed data or value not calculated.

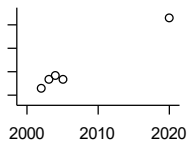
Employment

BEA EMPLOYMENT: MINING



U.S. Bureau of Economic Analysis,
Regional Economic Information System
(REIS)

Year	County	State of Kansas	Non Metro Kansas	County Rank	Per 1000 or \$ Per Capita
2001	320	19,592	.	13	.
2002	285	17,635	.	13	.
2003	333	19,869	.	13	.
2004	334	18,466	.	12	.
2005	390	19,489	.	11	.
2006	597	22,403	.	7	.
2007	641	24,043	.	6	.
2008	700	31,467	.	8	.
2009	597	29,941	.	9	.
2010	723	36,124	.	9	.
2011	724	31,658	.	8	.
2012	933	42,405	.	8	.
2013	978	46,585	.	9	.
2014	947	45,526	.	10	.
2015	854	46,460	.	10	.
2016	855	48,555	.	11	.
2017	759	40,710	.	10	.
2018	657	32,021	.	8	.
2019	625	29,101	.	9	.
2020	523	26,272	.	9	.



BEA EMPLOYMENT: UTILITIES

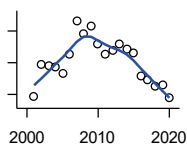
U.S. Bureau of Economic Analysis,
Regional Economic Information System
(REIS)

Year	County	State of Kansas	Non Metro Kansas	County Rank	Per 1000 or \$ Per Capita
2001	.	7,608	.	.	.
2002	26	7,087	.	10	.
2003	33	7,253	.	8	.
2004	37	7,356	.	9	.
2005	33	7,447	.	10	.
2006	.	7,478	.	.	.
2007	.	7,584	.	.	.
2008	.	7,855	.	.	.
2009	.	7,941	.	.	.
2010	.	8,028	.	.	.
2011	.	8,213	.	.	.
2012	.	8,155	.	.	.
2013	.	7,949	.	.	.
2014	.	7,985	.	.	.
2015	.	7,040	.	.	.
2016	.	7,133	.	.	.
2020	86	6,573	.	14	.

County: county value. Kansas: state value. County Rank: highest county value ranked #1. (\$000): thousands of dollars. Nonmetro Kansas: Kansas total less Metropolitan Areas as defined by the Office of Management and Budget (OMB; released 3/6/2020). Per 1000: For nonmoney amounts, Per 1000=(county value / county population for the same year as the data) x 1000. \$ Per capita=(county value / county population for the same year as the data). Value= . indicates missing or suppressed data or value not calculated.

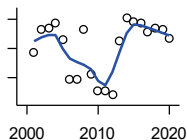
Employment

**BEA EMPLOYMENT:
CONSTRUCTION**



U.S. Bureau of Economic Analysis,
Regional Economic Information System
(REIS)

Year	County	State of Kansas	Non Metro Kansas	County Rank	Per 1000 or \$ Per Capita
2001	247	92,647	27,972	49	.
2002	298	90,370	.	39	.
2003	295	91,725	26,681	43	.
2004	293	93,271	.	42	.
2005	283	94,836	.	42	.
2006	313	97,449	.	40	.
2007	366	99,119	29,179	39	.
2008	345	97,741	.	41	.
2009	358	90,165	28,077	38	.
2010	330	84,708	26,402	38	.
2011	314	83,332	25,999	41	.
2012	320	85,966	.	40	.
2013	329	88,094	.	42	.
2014	321	91,143	.	43	.
2015	315	91,458	27,583	42	.
2016	280	93,539	27,151	47	.
2017	274	92,046	25,579	48	.
2018	262	92,985	25,530	49	.
2019	265	94,858	25,701	46	.
2020	244	94,186	26,085	51	.



**BEA EMPLOYMENT:
MANUFACTURING**

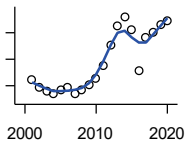
U.S. Bureau of Economic Analysis,
Regional Economic Information System
(REIS)

Year	County	State of Kansas	Non Metro Kansas	County Rank	Per 1000 or \$ Per Capita
2001	137	199,980	73,170	64	.
2002	153	188,905	70,691	63	.
2003	154	179,013	68,418	62	.
2004	157	181,738	69,669	64	.
2005	146	185,459	71,072	66	.
2006	119	188,047	71,704	67	.
2007	119	192,930	73,488	67	.
2008	153	193,116	72,235	65	.
2009	122	173,854	64,961	68	.
2010	111	166,000	62,884	69	.
2011	111	167,302	64,361	69	.
2012	108	169,308	65,944	70	.
2013	145	170,113	67,251	64	.
2014	161	169,307	68,299	64	.
2015	158	168,324	66,978	62	.
2016	157	167,723	65,796	61	.
2017	151	168,438	66,795	63	.
2018	154	171,778	68,181	64	.
2019	153	173,605	67,879	63	.
2020	147	165,228	65,658	64	.

County: county value. Kansas: state value. County Rank: highest county value ranked #1. (\$000): thousands of dollars. Nonmetro Kansas: Kansas total less Metropolitan Areas as defined by the Office of Management and Budget (OMB; released 3/6/2020). Per 1000: For nonmoney amounts, Per 1000=(county value / county population for the same year as the data) x 1000. \$ Per capita=(county value / county population for the same year as the data). Value= . indicates missing or suppressed data or value not calculated.

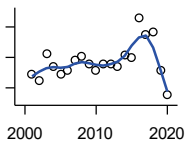
Employment

BEA EMPLOYMENT: WHOLESALE TRADE



U.S. Bureau of Economic Analysis,
Regional Economic Information System
(REIS)

Year	County	State of Kansas	Non Metro Kansas	County Rank	Per 1000 or \$ Per Capita
2001	162	65,698	.	45	.
2002	147	65,408	.	45	.
2003	140	63,504	.	43	.
2004	134	64,434	.	43	.
2005	141	64,587	.	42	.
2006	146	64,743	.	41	.
2007	136	65,993	.	43	.
2008	142	67,693	.	43	.
2009	153	65,954	.	41	.
2010	164	64,376	.	37	.
2011	189	64,712	.	37	.
2012	227	63,973	.	32	.
2013	263	64,999	.	27	.
2014	280	69,295	.	27	.
2015	255	68,444	.	30	.
2016	178	64,843	.	41	.
2017	241	65,014	.	30	.
2018	252	64,745	.	32	.
2019	266	63,324	.	28	.
2020	272	60,844	.	28	.



BEA EMPLOYMENT: RETAIL TRADE

U.S. Bureau of Economic Analysis,
Regional Economic Information System
(REIS)

Year	County	State of Kansas	Non Metro Kansas	County Rank	Per 1000 or \$ Per Capita
2001	822	198,069	.	33	.
2002	811	196,112	.	34	.
2003	855	194,545	64,173	33	.
2004	836	192,957	63,265	34	.
2005	822	191,656	62,506	34	.
2006	829	190,391	62,082	34	.
2007	845	190,643	61,716	33	.
2008	852	185,907	59,783	33	.
2009	839	181,262	58,714	33	.
2010	829	177,858	57,470	32	.
2011	840	180,548	57,734	33	.
2012	840	180,596	57,349	32	.
2013	835	183,245	57,556	31	.
2014	853	185,899	57,855	31	.
2015	850	188,421	58,516	32	.
2016	915	188,505	57,864	30	.
2017	887	186,633	56,715	30	.
2018	892	183,323	.	29	.
2019	828	177,240	53,427	30	.
2020	788	171,777	52,563	30	.

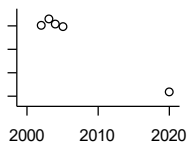
County: county value. Kansas: state value. County Rank: highest county value ranked #1. (\$000): thousands of dollars. Nonmetro Kansas: Kansas total less Metropolitan Areas as defined by the Office of Management and Budget (OMB; released 3/6/2020). Per 1000: For nonmoney amounts, Per 1000=(county value / county population for the same year as the data) x 1000. \$ Per capita=(county value / county population for the same year as the data). Value= . indicates missing or suppressed data or value not calculated.

Employment

**BEA EMPLOYMENT:
TRANSPORTATION AND
WAREHOUSING**

U.S. Bureau of Economic Analysis,
Regional Economic Information System
(REIS)

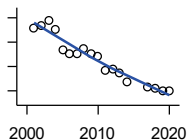
Year	County	State of Kansas	Non Metro Kansas	County Rank	Per 1000 or \$ Per Capita
2001	.	56,302	.	.	.
2002	181	55,319	.	24	.
2003	186	55,509	.	24	.
2004	182	55,479	.	24	.
2005	179	56,287	.	25	.
2006	.	57,506	.	.	.
2007	.	59,277	.	.	.
2008	.	58,725	.	.	.
2009	.	56,238	.	.	.
2010	.	55,179	.	.	.
2011	.	57,449	.	.	.
2012	.	59,756	.	.	.
2013	.	59,780	.	.	.
2014	.	60,565	.	.	.
2015	.	63,256	.	.	.
2016	.	65,705	.	.	.
2020	124	80,543	.	37	.



BEA EMPLOYMENT: INFORMATION

U.S. Bureau of Economic Analysis,
Regional Economic Information System
(REIS)

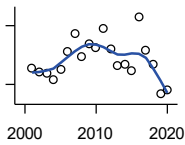
Year	County	State of Kansas	Non Metro Kansas	County Rank	Per 1000 or \$ Per Capita
2001	72	54,895	.	37	.
2002	74	50,728	.	33	.
2003	78	48,328	6,860	33	.
2004	70	45,617	.	37	.
2005	54	43,840	.	43	.
2006	51	43,925	.	41	.
2007	50	45,115	.	44	.
2008	55	42,958	.	40	.
2009	51	38,677	.	41	.
2010	48	33,432	.	43	.
2011	37	32,160	.	46	.
2012	38	31,829	.	47	.
2013	35	31,737	.	50	.
2014	27	32,316	.	53	.
2015	.	25,282	.	.	.
2016	.	24,998	.	.	.
2017	23	24,004	.	50	.
2018	22	23,165	.	53	.
2019	20	22,078	.	54	.
2020	20	20,810	.	54	.



County: county value. Kansas: state value. County Rank: highest county value ranked #1. (\$000): thousands of dollars. Nonmetro Kansas: Kansas total less Metropolitan Areas as defined by the Office of Management and Budget (OMB; released 3/6/2020). Per 1000: For nonmoney amounts, Per 1000=(county value / county population for the same year as the data) x 1000. \$ Per capita=(county value / county population for the same year as the data). Value= . indicates missing or suppressed data or value not calculated.

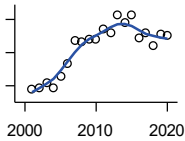
Employment

BEA EMPLOYMENT: FINANCE AND INSURANCE



U.S. Bureau of Economic Analysis,
Regional Economic Information System
(REIS)

Year	County	State of Kansas	Non Metro Kansas	County Rank	Per 1000 or \$ Per Capita
2001	257	76,118	.	33	.
2002	253	78,206	.	32	.
2003	252	78,441	.	34	.
2004	245	78,350	.	33	.
2005	255	78,952	.	32	.
2006	273	80,900	.	32	.
2007	292	86,094	.	31	.
2008	268	89,590	.	32	.
2009	282	93,573	.	33	.
2010	277	92,428	.	34	.
2011	297	99,495	.	33	.
2012	276	98,640	.	35	.
2013	259	99,998	.	38	.
2014	261	98,209	.	37	.
2015	254	100,534	.	34	.
2016	309	102,699	.	33	.
2017	275	101,563	.	35	.
2018	260	102,816	.	37	.
2019	230	100,276	.	40	.
2020	235	101,626	.	38	.



BEA EMPLOYMENT: REAL ESTATE, RENTAL, AND LEASING

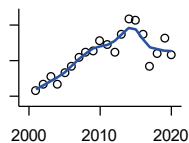
U.S. Bureau of Economic Analysis,
Regional Economic Information System
(REIS)

Year	County	State of Kansas	Non Metro Kansas	County Rank	Per 1000 or \$ Per Capita
2001	119	45,237	.	33	.
2002	121	44,970	.	33	.
2003	130	47,095	.	33	.
2004	122	50,181	.	36	.
2005	140	53,335	.	34	.
2006	158	55,342	.	33	.
2007	194	57,694	.	30	.
2008	191	57,933	.	30	.
2009	195	57,132	.	29	.
2010	196	59,578	.	29	.
2011	211	61,821	.	28	.
2012	205	60,432	.	29	.
2013	231	62,134	.	28	.
2014	220	64,705	.	29	.
2015	232	66,604	.	29	.
2016	197	68,395	.	33	.
2017	204	70,304	.	31	.
2018	185	72,631	.	35	.
2019	203	69,119	.	30	.
2020	201	68,452	.	31	.

County: county value. Kansas: state value. County Rank: highest county value ranked #1. (\$000): thousands of dollars. Nonmetro Kansas: Kansas total less Metropolitan Areas as defined by the Office of Management and Budget (OMB; released 3/6/2020). Per 1000: For nonmoney amounts, Per 1000=(county value / county population for the same year as the data) x 1000. \$ Per capita=(county value / county population for the same year as the data). Value= . indicates missing or suppressed data or value not calculated.

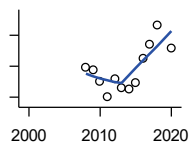
Employment

BEA EMPLOYMENT: PROFESSIONAL AND TECHNICAL SERVICES



U.S. Bureau of Economic Analysis,
Regional Economic Information System
(REIS)

Year	County	State of Kansas	Non Metro Kansas	County Rank	Per 1000 or \$ Per Capita
2001	166	81,396	.	33	.
2002	173	80,684	.	30	.
2003	182	80,311	.	26	.
2004	174	85,550	.	27	.
2005	187	85,003	.	28	.
2006	194	87,381	.	29	.
2007	203	92,717	.	32	.
2008	210	95,362	.	34	.
2009	211	93,232	.	30	.
2010	223	93,037	.	30	.
2011	218	93,237	.	31	.
2012	210	95,360	.	32	.
2013	229	100,795	.	31	.
2014	247	102,210	.	30	.
2015	246	105,625	.	30	.
2016	230	108,059	.	29	.
2017	193	109,041	.	30	.
2018	208	110,513	.	30	.
2019	226	109,637	.	28	.
2020	206	108,634	.	30	.



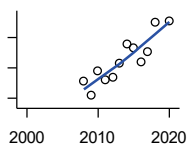
BEA EMPLOYMENT: MANAGEMENT OF COMPANIES AND ENTERPRISES

U.S. Bureau of Economic Analysis,
Regional Economic Information System
(REIS)

Year	County	State of Kansas	Non Metro Kansas	County Rank	Per 1000 or \$ Per Capita
2001	.	13,832	.	.	.
2002	.	12,576	.	.	.
2003	.	11,135	.	.	.
2004	.	10,614	.	.	.
2005	.	11,811	.	.	.
2006	.	13,061	.	.	.
2007	.	13,398	.	.	.
2008	89	15,234	.	15	.
2009	88	14,849	.	15	.
2010	80	16,579	.	14	.
2011	70	15,343	.	13	.
2012	82	15,075	.	15	.
2013	76	16,667	.	16	.
2014	75	20,441	.	16	.
2015	79	29,604	.	15	.
2016	95	27,824	.	15	.
2017	104	27,767	.	12	.
2018	117	28,862	.	10	.
2020	102	25,648	.	11	.

County: county value. Kansas: state value. County Rank: highest county value ranked #1. (\$000): thousands of dollars. Nonmetro Kansas: Kansas total less Metropolitan Areas as defined by the Office of Management and Budget (OMB; released 3/6/2020). Per 1000: For nonmoney amounts, Per 1000=(county value / county population for the same year as the data) x 1000. \$ Per capita=(county value / county population for the same year as the data). Value= . indicates missing or suppressed data or value not calculated.

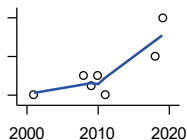
Employment



**BEA EMPLOYMENT:
ADMINISTRATIVE AND WASTE
SERVICES**

U.S. Bureau of Economic Analysis,
Regional Economic Information System
(REIS)

Year	County	State of Kansas	Non Metro Kansas	County Rank	Per 1000 or \$ Per Capita
2001	.	81,573	.	.	.
2002	.	82,992	.	.	.
2003	.	81,298	.	.	.
2004	.	85,721	.	.	.
2005	.	89,933	.	.	.
2006	.	93,688	.	.	.
2007	.	98,865	.	.	.
2008	131	97,440	.	36	.
2009	122	92,455	.	41	.
2010	138	93,675	.	38	.
2011	132	97,969	.	40	.
2012	134	100,490	.	43	.
2013	143	104,680	.	42	.
2014	156	107,218	18,836	39	.
2015	153	103,436	18,767	41	.
2016	144	103,233	18,428	42	.
2017	151	101,532	18,198	40	.
2018	170	102,062	.	35	.
2020	171	95,361	.	34	.



**BEA EMPLOYMENT: EDUCATIONAL
SERVICES**

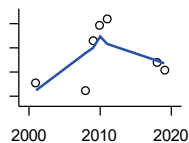
U.S. Bureau of Economic Analysis,
Regional Economic Information System
(REIS)

Year	County	State of Kansas	Non Metro Kansas	County Rank	Per 1000 or \$ Per Capita
2001	20	21,169	.	28	.
2002	.	22,173	.	.	.
2003	.	22,651	.	.	.
2004	.	21,601	.	.	.
2005	.	22,177	.	.	.
2006	.	22,438	.	.	.
2007	.	23,647	.	.	.
2008	22	24,653	.	25	.
2009	21	25,120	.	22	.
2010	22	26,071	.	25	.
2011	20	26,080	.	26	.
2012	.	26,625	.	.	.
2013	.	27,508	.	.	.
2014	.	28,708	.	.	.
2015	.	28,794	.	.	.
2016	.	27,996	.	.	.
2018	24	28,560	.	29	.
2019	28	29,586	.	28	.

County: county value. Kansas: state value. County Rank: highest county value ranked #1. (\$000): thousands of dollars. Nonmetro Kansas: Kansas total less Metropolitan Areas as defined by the Office of Management and Budget (OMB; released 3/6/2020). Per 1000: For nonmoney amounts, Per 1000=(county value / county population for the same year as the data) x 1000. \$ Per capita=(county value / county population for the same year as the data). Value= . indicates missing or suppressed data or value not calculated.

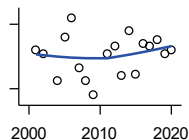
Employment

BEA EMPLOYMENT: HEALTH CARE AND SOCIAL ASSISTANCE



U.S. Bureau of Economic Analysis, Regional Economic Information System (REIS)

Year	County	State of Kansas	Non Metro Kansas	County Rank	Per 1000 or \$ Per Capita
2001	751	165,415	.	18	.
2002	.	168,198	.	.	.
2003	.	169,654	.	.	.
2004	.	172,796	.	.	.
2005	.	173,949	.	.	.
2006	.	176,919	.	.	.
2007	.	182,160	.	.	.
2008	745	186,051	.	20	.
2009	786	188,499	.	18	.
2010	799	188,383	.	20	.
2011	804	190,736	.	21	.
2012	.	192,991	.	.	.
2013	.	193,687	.	.	.
2014	.	194,632	.	.	.
2015	.	199,724	.	.	.
2016	.	201,830	.	.	.
2018	768	204,011	.	21	.
2019	762	206,646	.	22	.



BEA EMPLOYMENT: ARTS, ENTERTAINMENT, AND RECREATION

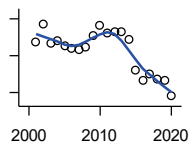
U.S. Bureau of Economic Analysis, Regional Economic Information System (REIS)

Year	County	State of Kansas	Non Metro Kansas	County Rank	Per 1000 or \$ Per Capita
2001	58	25,012	.	34	.
2002	56	25,668	.	35	.
2003	.	24,116	.	.	.
2004	44	25,355	.	41	.
2005	64	26,067	.	38	.
2006	73	26,505	.	37	.
2007	50	27,489	.	38	.
2008	44	27,501	.	40	.
2009	37	27,203	.	42	.
2010	.	27,479	.	.	.
2011	56	28,487	.	36	.
2012	60	30,729	.	36	.
2013	46	31,068	.	39	.
2014	67	32,154	.	34	.
2015	47	31,169	.	37	.
2016	61	32,373	.	36	.
2017	60	33,213	.	35	.
2018	63	33,837	.	33	.
2019	56	33,082	.	36	.
2020	58	26,644	.	32	.

County: county value. Kansas: state value. County Rank: highest county value ranked #1. (\$000): thousands of dollars. Nonmetro Kansas: Kansas total less Metropolitan Areas as defined by the Office of Management and Budget (OMB; released 3/6/2020). Per 1000: For nonmoney amounts, Per 1000=(county value / county population for the same year as the data) x 1000. \$ Per capita=(county value / county population for the same year as the data). Value= . indicates missing or suppressed data or value not calculated.

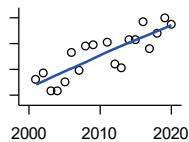
Employment

BEA EMPLOYMENT: GOVERNMENT AND GOVERNMENT ENTERPRISES



U.S. Bureau of Economic Analysis, Regional Economic Information System (REIS)

Year	County	State of Kansas	Non Metro Kansas	County Rank	Per 1000 or \$ Per Capita
2001	1,238	282,293	102,993	40	.
2002	1,286	281,427	103,581	38	.
2003	1,234	282,459	103,389	40	.
2004	1,240	283,877	103,946	39	.
2005	1,227	282,798	103,194	40	.
2006	1,220	288,372	104,103	40	.
2007	1,216	294,413	104,598	40	.
2008	1,225	298,580	104,718	40	.
2009	1,253	300,422	104,081	39	.
2010	1,283	303,875	103,382	37	.
2011	1,263	299,952	101,535	36	.
2012	1,264	298,068	101,180	36	.
2013	1,264	297,689	101,232	36	.
2014	1,245	296,956	100,634	36	.
2015	1,161	295,799	99,719	39	.
2016	1,134	291,536	98,520	40	.
2017	1,149	295,748	99,542	39	.
2018	1,136	298,105	99,499	39	.
2019	1,134	302,017	100,227	39	.
2020	1,090	292,583	96,477	39	.



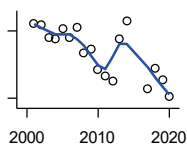
BEA EMPLOYMENT: ACCOMMODATION AND FOOD SERVICES

U.S. Bureau of Economic Analysis, Regional Economic Information System (REIS)

Year	County	State of Kansas	Non Metro Kansas	County Rank	Per 1000 or \$ Per Capita
2001	465	103,353	.	30	.
2002	475	103,692	.	31	.
2003	446	105,138	.	30	.
2004	447	106,694	.	32	.
2005	460	107,303	.	32	.
2006	507	109,888	.	32	.
2007	478	110,863	.	31	.
2008	517	111,092	.	28	.
2009	519	109,353	.	30	.
2010	.	108,628	.	.	.
2011	523	110,514	.	27	.
2012	488	112,574	.	30	.
2013	482	114,102	.	28	.
2014	526	115,768	.	28	.
2015	527	118,503	.	29	.
2016	554	119,764	.	27	.
2017	512	121,181	.	27	.
2018	537	121,900	.	29	.
2019	559	122,819	.	28	.
2020	549	106,561	.	26	.

County: county value. Kansas: state value. County Rank: highest county value ranked #1. (\$000): thousands of dollars. Nonmetro Kansas: Kansas total less Metropolitan Areas as defined by the Office of Management and Budget (OMB; released 3/6/2020). Per 1000: For nonmoney amounts, Per 1000=(county value / county population for the same year as the data) x 1000. \$ Per capita=(county value / county population for the same year as the data). Value= . indicates missing or suppressed data or value not calculated.

Employment

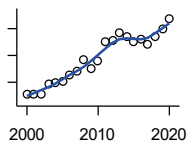


BEA EMPLOYMENT: OTHER SERVICES, EXCEPT PUBLIC ADMINISTRATION

U.S. Bureau of Economic Analysis, Regional Economic Information System (REIS)

Year	County	State of Kansas	Non Metro Kansas	County Rank	Per 1000 or \$ Per Capita
2001	387	92,176	.	37	.
2002	386	95,350	.	38	.
2003	374	95,821	32,629	39	.
2004	373	95,610	.	39	.
2005	382	95,930	32,555	38	.
2006	374	96,413	.	36	.
2007	383	98,444	.	35	.
2008	360	96,705	.	36	.
2009	364	95,534	.	34	.
2010	346	93,302	.	35	.
2011	340	94,865	.	34	.
2012	335	94,977	.	37	.
2013	373	95,471	.	39	.
2014	389	97,806	.	36	.
2015	.	98,041	.	.	.
2016	.	97,219	.	.	.
2017	328	96,568	.	36	.
2018	347	98,645	.	35	.
2019	336	98,638	.	36	.
2020	321	92,245	.	36	.

Income



BEA PER CAPITA PERSONAL INCOME (\$)

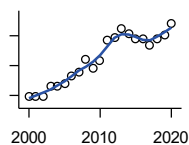
U.S. Bureau of Economic Analysis, Regional Economic Information System (REIS)

Year	County	State of Kansas	Non Metro Kansas	County Rank	Per 1000 or \$ Per Capita
2000	25,736	28,253	23,116	20	.
2001	25,638	29,112	24,576	45	.
2002	25,438	29,248	24,314	32	.
2003	29,191	30,074	26,017	26	.
2004	29,816	30,843	26,583	19	.
2005	30,158	32,545	28,356	44	.
2006	32,508	35,690	29,782	26	.
2007	33,988	38,057	32,034	43	.
2008	38,355	41,257	35,211	42	.
2009	35,055	39,431	33,876	56	.
2010	38,035	39,960	35,795	49	.
2011	44,970	43,015	39,041	38	.
2012	45,647	45,294	39,660	38	.
2013	48,422	46,174	41,747	38	.
2014	46,916	47,013	41,042	38	.
2015	45,219	47,332	40,638	37	.
2016	46,169	47,326	40,797	27	.
2017	44,138	48,756	41,314	34	.
2018	46,936	50,811	43,283	36	.
2019	49,737	52,820	44,491	34	.
2020	53,750	55,677	48,415	38	.

County: county value. Kansas: state value. County Rank: highest county value ranked #1. (\$000): thousands of dollars. Nonmetro Kansas: Kansas total less Metropolitan Areas as defined by the Office of Management and Budget (OMB; released 3/6/2020). Per 1000: For nonmoney amounts, Per 1000=(county value / county population for the same year as the data) x 1000. \$ Per capita=(county value / county population for the same year as the data). Value= . indicates missing or suppressed data or value not calculated.

Income

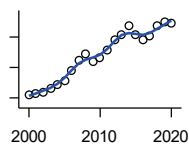
**SOURCES OF PERSONAL INCOME:
TOTAL PERSONAL INCOME (\$000)**



U.S. Bureau of Economic Analysis,
Regional Economic Information System
(REIS)

Year	County	State of Kansas	Non Metro Kansas	County Rank	Per 1000 or \$ Per Capita
2000	248,328	76,105,125	22,273,838	41	25,741.5
2001	245,586	78,664,651	23,411,174	41	25,638.0
2002	245,960	79,365,190	23,000,314	41	25,438.0
2003	279,501	81,890,340	24,494,191	39	29,190.7
2004	283,018	84,335,940	24,924,467	41	29,816.5
2005	290,062	89,346,228	26,452,291	41	30,158.2
2006	313,963	98,610,188	27,661,596	39	32,508.1
2007	329,620	105,943,199	29,715,946	41	33,988.5
2008	371,431	115,852,478	32,614,565	40	38,355.1
2009	338,950	111,697,350	31,394,702	43	35,055.3
2010	366,692	114,239,828	33,291,419	40	37,975.6
2011	433,689	123,558,772	36,221,488	39	44,969.8
2012	445,510	130,948,127	36,696,759	38	45,655.9
2013	473,572	133,979,908	38,513,959	37	48,432.4
2014	458,319	136,878,718	37,680,598	39	46,920.5
2015	438,403	138,336,768	37,081,851	41	45,210.2
2016	441,279	138,533,890	36,930,885	39	46,173.4
2017	419,001	142,729,689	37,104,963	39	44,105.4
2018	437,722	148,955,739	38,589,364	39	46,865.3
2019	453,307	154,961,001	39,424,148	39	49,466.1
2020	490,580	163,462,179	42,618,591	39	53,574.3

**SOURCES OF PERSONAL INCOME:
WAGES AND SALARIES (\$000)**



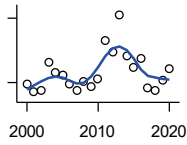
U.S. Bureau of Economic Analysis,
Regional Economic Information System
(REIS)

Year	County	State of Kansas	Non Metro Kansas	County Rank	Per 1000 or \$ Per Capita
2000	103,446	41,766,878	10,254,250	39	10,723.1
2001	105,807	43,269,734	10,518,206	38	11,045.7
2002	108,086	43,875,159	10,696,876	39	11,178.6
2003	112,761	44,488,560	10,894,971	39	11,776.6
2004	117,558	46,702,068	11,333,617	39	12,385.0
2005	122,366	48,537,956	11,614,130	40	12,722.6
2006	136,226	52,083,584	12,299,340	37	14,105.0
2007	149,588	55,442,368	13,093,908	37	15,424.6
2008	157,891	57,623,385	13,647,143	37	16,304.3
2009	147,648	55,605,578	13,199,674	37	15,270.2
2010	152,172	56,089,711	13,345,291	37	15,759.3
2011	162,902	58,104,706	13,856,458	37	16,891.5
2012	176,916	60,616,457	14,473,599	37	18,130.4
2013	183,525	61,872,023	14,781,792	37	18,769.2
2014	194,864	64,457,652	15,385,500	38	19,949.2
2015	182,913	66,729,598	15,454,485	38	18,862.8
2016	175,593	67,253,399	15,422,058	38	18,373.2
2017	182,012	68,830,861	15,731,853	38	19,159.2
2018	194,026	71,580,544	16,311,725	38	20,773.7
2019	200,069	74,404,771	16,882,299	38	21,832.1
2020	198,157	75,798,310	17,251,300	38	21,639.9

County: county value. Kansas: state value. County Rank: highest county value ranked #1. (\$000): thousands of dollars. Nonmetro Kansas: Kansas total less Metropolitan Areas as defined by the Office of Management and Budget (OMB; released 3/6/2020). Per 1000: For nonmoney amounts, Per 1000=(county value / county population for the same year as the data) x 1000. \$ Per capita=(county value / county population for the same year as the data). Value= . indicates missing or suppressed data or value not calculated.

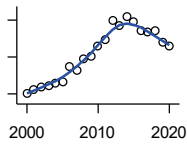
Income

**SOURCES OF PERSONAL INCOME:
PROPRIETORS-FARM (\$000)**



U.S. Bureau of Economic Analysis,
Regional Economic Information System
(REIS)

Year	County	State of Kansas	Non Metro Kansas	County Rank	Per 1000 or \$ Per Capita
2000	18,520	668,539	673,707	9	1,919.8
2001	10,999	779,473	769,336	27	1,148.2
2002	12,402	145,064	187,033	5	1,282.7
2003	39,419	1,281,076	1,195,298	1	4,116.9
2004	29,819	1,149,425	938,524	7	3,141.5
2005	26,638	1,609,604	1,469,139	21	2,769.6
2006	18,814	766,047	663,735	12	1,948.0
2007	12,156	1,131,607	1,040,350	48	1,253.5
2008	20,745	1,582,092	1,404,900	33	2,142.2
2009	15,840	1,585,995	1,390,349	41	1,638.2
2010	22,856	2,149,482	2,029,067	35	2,367.0
2011	59,069	3,188,519	2,989,880	14	6,124.9
2012	48,919	2,519,555	2,296,875	13	5,013.2
2013	83,112	4,499,190	4,158,419	14	8,499.9
2014	45,210	2,231,181	2,157,992	13	4,628.4
2015	34,323	1,300,733	1,294,370	13	3,539.5
2016	42,964	1,577,060	1,564,511	13	4,495.6
2017	15,003	838,480	838,290	23	1,579.3
2018	12,985	1,050,662	971,690	32	1,390.3
2019	22,170	998,038	878,247	10	2,419.2
2020	32,329	2,151,349	1,887,881	13	3,530.5



**SOURCES OF PERSONAL INCOME:
PROPRIETORS-NONFARM (\$000)**

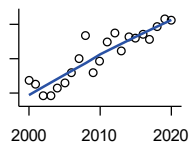
U.S. Bureau of Economic Analysis,
Regional Economic Information System
(REIS)

Year	County	State of Kansas	Non Metro Kansas	County Rank	Per 1000 or \$ Per Capita
2000	20,342	4,580,476	1,493,470	32	2,108.6
2001	22,138	4,510,530	1,855,621	34	2,311.1
2002	23,772	5,036,100	1,966,784	34	2,458.6
2003	24,487	4,719,377	1,916,735	33	2,557.4
2004	26,067	4,003,922	2,073,898	31	2,746.2
2005	26,447	4,455,294	2,200,971	36	2,749.7
2006	34,995	7,343,524	2,694,895	35	3,623.4
2007	32,507	7,280,197	2,436,574	33	3,351.9
2008	39,091	9,255,953	2,971,923	35	4,036.7
2009	40,351	9,323,551	2,858,848	32	4,173.2
2010	46,134	9,658,261	3,498,040	34	4,777.8
2011	49,753	12,196,566	4,186,007	36	5,159.0
2012	60,055	15,773,140	4,446,004	34	6,154.4
2013	57,101	16,441,660	4,492,127	34	5,839.7
2014	61,956	15,954,254	4,455,081	31	6,342.8
2015	59,018	15,536,116	4,386,172	34	6,086.2
2016	54,328	14,075,310	3,783,829	31	5,684.6
2017	53,554	15,371,957	3,908,254	32	5,637.3
2018	54,025	15,716,877	4,238,775	32	5,784.3
2019	48,080	16,705,488	3,921,051	33	5,246.6
2020	45,718	16,718,952	3,823,329	34	4,992.7

County: county value. Kansas: state value. County Rank: highest county value ranked #1. (\$000): thousands of dollars. Nonmetro Kansas: Kansas total less Metropolitan Areas as defined by the Office of Management and Budget (OMB; released 3/6/2020). Per 1000: For nonmoney amounts, Per 1000=(county value / county population for the same year as the data) x 1000. \$ Per capita=(county value / county population for the same year as the data). Value= . indicates missing or suppressed data or value not calculated.

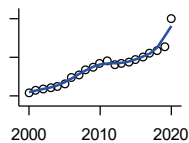
Income

**SOURCES OF PERSONAL INCOME:
DIVIDENDS,INTEREST,RENT(\$000)**



U.S. Bureau of Economic Analysis,
Regional Economic Information System
(REIS)

Year	County	State of Kansas	Non Metro Kansas	County Rank	Per 1000 or \$ Per Capita
2000	57,276	15,916,201	4,736,921	41	5,937.2
2001	54,836	15,770,830	4,699,417	44	5,724.6
2002	48,558	15,111,563	4,316,887	44	5,022.0
2003	48,169	15,370,764	4,360,311	45	5,030.7
2004	53,090	15,820,469	4,251,925	40	5,593.1
2005	55,819	17,147,069	4,485,387	39	5,803.6
2006	61,493	20,117,848	4,945,184	39	6,367.1
2007	70,378	22,269,186	5,526,219	39	7,257.0
2008	83,481	24,972,485	6,180,979	36	8,620.5
2009	61,995	21,453,879	5,308,474	42	6,411.7
2010	68,257	20,861,351	5,414,285	41	7,068.9
2011	79,389	23,387,567	5,781,075	37	8,232.0
2012	84,637	25,689,368	6,389,505	36	8,673.6
2013	74,677	24,832,212	5,984,811	40	7,637.2
2014	82,591	27,412,684	6,403,356	38	8,455.3
2015	82,001	27,244,414	6,423,685	39	8,456.3
2016	84,166	27,293,441	6,389,161	38	8,806.7
2017	81,533	28,385,472	6,700,156	39	8,582.4
2018	88,860	29,953,419	6,772,504	39	9,513.9
2019	93,194	30,820,276	6,957,987	38	10,169.6
2020	92,037	30,283,520	6,844,745	39	10,051.0



**SOURCES OF PERSONAL INCOME:
TRANSFER PAYMENTS (\$000)**

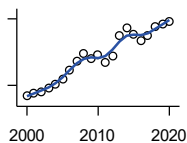
U.S. Bureau of Economic Analysis,
Regional Economic Information System
(REIS)

Year	County	State of Kansas	Non Metro Kansas	County Rank	Per 1000 or \$ Per Capita
2000	43,732	9,650,835	4,036,781	43	4,533.2
2001	45,755	10,549,124	4,355,457	45	4,776.6
2002	47,355	11,208,997	4,553,978	46	4,897.6
2003	48,602	11,709,049	4,702,911	46	5,075.9
2004	49,761	12,040,452	4,802,536	45	5,242.4
2005	52,574	12,696,735	5,059,314	45	5,466.2
2006	59,144	13,642,787	5,455,207	44	6,123.8
2007	62,164	14,686,821	5,775,024	44	6,410.0
2008	67,374	16,552,460	6,322,722	44	6,957.2
2009	70,025	18,025,603	6,790,962	44	7,242.2
2010	73,683	19,189,749	7,089,258	44	7,630.8
2011	76,273	19,625,770	7,255,825	44	7,908.9
2012	71,764	19,354,458	7,148,177	46	7,354.4
2013	73,388	19,639,358	7,185,636	45	7,505.4
2014	75,400	20,380,970	7,399,809	46	7,719.1
2015	77,764	21,116,856	7,623,577	46	8,019.4
2016	79,642	21,884,629	7,886,000	46	8,333.4
2017	84,571	22,559,744	8,062,517	43	8,902.2
2018	87,334	23,628,033	8,393,617	45	9,350.5
2019	91,041	25,050,174	8,845,371	46	9,934.6
2020	120,189	32,319,421	11,074,190	42	13,125.4

County: county value. Kansas: state value. County Rank: highest county value ranked #1. (\$000): thousands of dollars. Nonmetro Kansas: Kansas total less Metropolitan Areas as defined by the Office of Management and Budget (OMB; released 3/6/2020). Per 1000: For nonmoney amounts, Per 1000=(county value / county population for the same year as the data) x 1000. \$ Per capita=(county value / county population for the same year as the data). Value= . indicates missing or suppressed data or value not calculated.

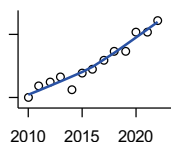
Income

**SOURCES OF PERSONAL INCOME:
LESS SOCIAL INSURANCE (\$000)**



U.S. Bureau of Economic Analysis,
Regional Economic Information System
(REIS)

Year	County	State of Kansas	Non Metro Kansas	County Rank	Per 1000 or \$ Per Capita
2000	17,667	6,655,813	1,663,044	37	1,831.3
2001	18,182	6,869,934	1,740,915	37	1,898.1
2002	18,593	7,008,361	1,778,636	38	1,922.9
2003	19,430	7,172,781	1,821,858	38	2,029.2
2004	20,288	7,556,560	1,904,014	39	2,137.4
2005	21,303	7,911,241	1,986,907	40	2,214.9
2006	23,420	8,406,937	2,090,313	37	2,424.9
2007	25,397	8,806,941	2,180,587	37	2,618.8
2008	27,082	9,207,010	2,299,399	37	2,796.6
2009	25,964	9,002,859	2,248,703	37	2,685.3
2010	26,795	9,235,760	2,321,191	37	2,775.0
2011	25,045	8,515,986	2,139,991	37	2,597.0
2012	26,618	8,816,128	2,195,919	37	2,727.8
2013	31,136	10,225,399	2,540,439	37	3,184.3
2014	33,041	10,609,601	2,635,009	37	3,382.6
2015	31,450	11,028,204	2,663,038	38	3,243.3
2016	29,972	10,915,915	2,604,579	39	3,136.1
2017	31,272	11,224,218	2,669,954	38	3,291.8
2018	33,343	11,749,229	2,797,106	38	3,569.9
2019	33,845	12,245,451	2,889,336	38	3,693.3
2020	34,478	12,715,152	3,027,656	39	3,765.2



HUD MEDIAN FAMILY INCOME

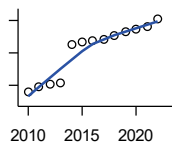
U.S. Department of Housing and Urban
Development (HUD)

Year	County	State of Kansas	Non Metro Kansas	County Rank	Per 1000 or \$ Per Capita
2010	54,900	63,100	.	41	.
2011	57,800	64,300	.	39	.
2012	58,600	65,200	.	39	.
2013	59,800	64,800	.	41	.
2014	56,900	64,400	.	61	.
2015	60,800	66,300	.	43	.
2016	61,600	66,700	.	34	.
2017	63,700	68,500	.	34	.
2018	66,000	73,100	.	38	.
2019	66,000	75,200	.	42	.
2020	70,500	76,500	.	33	.
2021	70,600	77,400	.	39	.
2022	73,300	87,800	.	50	.

County: county value. Kansas: state value. County Rank: highest county value ranked #1. (\$000): thousands of dollars. Nonmetro Kansas: Kansas total less Metropolitan Areas as defined by the Office of Management and Budget (OMB; released 3/6/2020). Per 1000: For nonmoney amounts, Per 1000=(county value / county population for the same year as the data) x 1000. \$ Per capita=(county value / county population for the same year as the data). Value= . indicates missing or suppressed data or value not calculated.

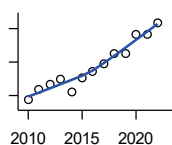
Income

HUD 30% LOW-TO-MEDIUM INCOME (LMI) LIMIT - 4 PERSONS



U.S. Department of Housing and Urban Development (HUD)

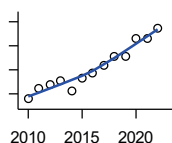
Year	County	State of Kansas	Non Metro Kansas	County Rank	Per 1000 or \$ Per Capita
2010	16,450	.	.	41	.
2011	17,300	.	.	36	.
2012	17,600	.	.	35	.
2013	17,950	.	.	37	.
2014	23,850	.	.	105	.
2015	24,250	.	.	105	.
2016	24,300	.	.	105	.
2017	24,600	.	.	105	.
2018	25,100	21,950	.	105	.
2019	25,750	22,550	.	105	.
2020	26,200	22,950	.	105	.
2021	26,500	23,200	.	105	.
2022	27,750	25,950	.	105	.



HUD 50% LOW-TO-MEDIUM INCOME (LMI) LIMIT - 4 PERSONS

U.S. Department of Housing and Urban Development (HUD)

Year	County	State of Kansas	Non Metro Kansas	County Rank	Per 1000 or \$ Per Capita
2010	27,450	.	.	41	.
2011	28,800	.	.	36	.
2012	29,300	.	.	35	.
2013	29,900	.	.	37	.
2014	28,450	.	.	62	.
2015	30,100	.	.	48	.
2016	30,800	.	.	36	.
2017	31,850	.	.	33	.
2018	33,000	36,550	.	38	.
2019	33,000	37,600	.	42	.
2020	35,250	38,250	.	35	.
2021	35,300	38,700	.	36	.
2022	36,700	43,300	.	57	.



HUD 80% LOW-TO-MEDIUM INCOME (LMI) LIMIT - 4 PERSONS

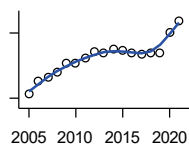
U.S. Department of Housing and Urban Development (HUD)

Year	County	State of Kansas	Non Metro Kansas	County Rank	Per 1000 or \$ Per Capita
2010	43,900	.	.	41	.
2011	46,050	.	.	36	.
2012	46,900	.	.	35	.
2013	47,850	.	.	37	.
2014	45,500	.	.	62	.
2015	48,150	.	.	48	.
2016	49,300	.	.	36	.
2017	50,950	.	.	33	.
2018	52,800	58,500	.	38	.
2019	52,800	60,150	.	42	.
2020	56,400	61,200	.	35	.
2021	56,500	61,900	.	36	.
2022	58,700	69,250	.	57	.

County: county value. Kansas: state value. County Rank: highest county value ranked #1. (\$000): thousands of dollars. Nonmetro Kansas: Kansas total less Metropolitan Areas as defined by the Office of Management and Budget (OMB; released 3/6/2020). Per 1000: For nonmoney amounts, Per 1000=(county value / county population for the same year as the data) x 1000. \$ Per capita=(county value / county population for the same year as the data). Value= . indicates missing or suppressed data or value not calculated.

Banking

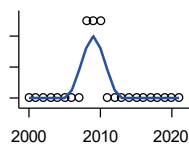
BANK DEPOSITS (1984-2004 in thousands; 2005- in millions)



Federal Deposit Insurance Corporation, Data Book, Operating Banks and Branches

Year	County	State of Kansas	Non Metro Kansas	County Rank	Per 1000 or \$ Per Capita
2005	211	48,304	17,000	38	21.9
2006	239	50,668	17,586	36	24.7
2007	248	54,057	18,517	34	25.6
2008	260	57,869	19,628	35	26.8
2009	282	57,763	20,031	34	29.2
2010	280	60,031	20,678	34	29.0
2011	292	61,094	21,347	34	30.3
2012	306	62,910	22,481	34	31.4
2013	303	64,547	22,795	34	31.0
2014	314	66,538	23,338	35	32.1
2015	309	68,160	23,367	34	31.9
2016	303	70,381	23,420	34	31.7
2017	301	73,329	23,928	36	31.7
2018	304	74,623	24,100	36	32.5
2019	304	76,436	24,488	38	33.2
2020	351	88,563	27,547	36	38.3
2021	378	97,055	30,122	37	41.2

NUMBER OF BANKS



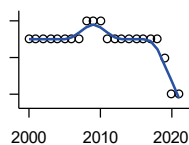
Federal Deposit Insurance Corporation, Data Book, Operating Banks and Branches

Year	County	State of Kansas	Non Metro Kansas	County Rank	Per 1000 or \$ Per Capita
2000	3	410	145	92	.
2001	3	410	136	93	.
2002	3	404	129	92	.
2003	3	397	121	91	.
2004	3	394	112	89	.
2005	3	388	101	91	.
2006	3	385	94	91	.
2007	3	382	91	91	.
2008	4	378	82	76	.
2009	4	374	79	75	.
2010	4	367	70	73	.
2011	3	359	61	92	.
2012	3	348	57	92	.
2013	3	332	45	92	.
2014	3	329	41	91	.
2015	3	320	31	90	.
2016	3	314	24	88	.
2017	3	301	13	88	.
2018	3	289	7	88	.
2019	3	279	3	88	.
2020	3	271	-1	88	.
2021	3	270	-6	88	.

County: county value. Kansas: state value. County Rank: highest county value ranked #1. (\$000): thousands of dollars. Nonmetro Kansas: Kansas total less Metropolitan Areas as defined by the Office of Management and Budget (OMB; released 3/6/2020). Per 1000: For nonmoney amounts, Per 1000=(county value / county population for the same year as the data) x 1000. \$ Per capita=(county value / county population for the same year as the data). Value= . indicates missing or suppressed data or value not calculated.

Banking

NUMBER OF BANKING OFFICES

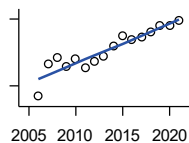


Federal Deposit Insurance Corporation, Data Book, Operating Banks and Branches

Year	County	State of Kansas	Non Metro Kansas	County Rank	Per 1000 or \$ Per Capita
2000	6	1,398	703	68	.
2001	6	1,424	708	68	.
2002	6	1,447	704	67	.
2003	6	1,461	708	67	.
2004	6	1,485	708	68	.
2005	6	1,505	711	67	.
2006	6	1,518	711	66	.
2007	6	1,543	717	66	.
2008	7	1,556	717	59	.
2009	7	1,569	716	59	.
2010	7	1,561	710	59	.
2011	6	1,559	707	66	.
2012	6	1,533	702	66	.
2013	6	1,518	696	66	.
2014	6	1,491	685	67	.
2015	6	1,472	675	67	.
2016	6	1,465	668	66	.
2017	6	1,452	666	66	.
2018	6	1,439	660	66	.
2019	5	1,439	663	74	.
2020	3	1,416	653	95	.
2021	3	1,392	641	95	.

Government

TANGIBLE ASSESSED VALUATION (KDoR, million\$; 2006-)



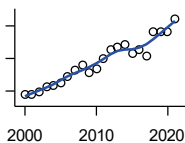
Kansas Department of Revenue, Division of Property Valuation, Statistical Report of Property Assessment and Taxation

Year	County	State of Kansas	Non Metro Kansas	County Rank	Per 1000 or \$ Per Capita
2006	110.5	28,964.3	10,316.9	42	11.4
2007	140.1	30,086.9	10,335.9	36	14.4
2008	144.9	31,000.3	10,856.9	36	15.0
2009	137.1	30,312.3	10,555.6	36	14.2
2010	143.8	29,450.2	10,158.7	35	14.9
2011	136.4	29,963.6	10,572.3	35	14.1
2012	141.7	30,382.9	10,876.2	35	14.5
2013	146.7	30,850.2	11,044.4	36	15.0
2014	155.7	31,783.0	11,388.9	35	15.9
2015	164.4	32,335.7	11,037.8	31	17.0
2016	161.2	33,156.3	10,889.6	31	16.9
2017	164.2	34,754.5	11,439.0	34	17.3
2018	168.7	36,566.1	11,907.1	36	18.1
2019	173.6	38,255.2	12,336.7	35	18.9
2020	173.6	39,333.9	12,219.3	36	19.0
2021	179.2	40,812.0	12,601.5	36	19.5

County: county value. Kansas: state value. County Rank: highest county value ranked #1. (\$000): thousands of dollars. Nonmetro Kansas: Kansas total less Metropolitan Areas as defined by the Office of Management and Budget (OMB; released 3/6/2020). Per 1000: For nonmoney amounts, Per 1000=(county value / county population for the same year as the data) x 1000. \$ Per capita=(county value / county population for the same year as the data). Value= . indicates missing or suppressed data or value not calculated.

Government

SALES TAX COLLECTIONS (\$)

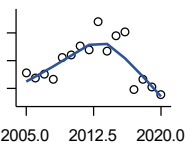


Kansas Department of Revenue. Use tax collections included beginning in calendar year 2018.

Year	County	State of Kansas	Non Metro Kansas	County Rank	Per 1000 or \$ Per Capita
2000	5,530,105	1,475,831,808	432,761,608	31	573,246.1
2001	5,581,607	1,481,026,688	426,316,284	31	582,692.0
2002	5,961,472	1,561,316,864	443,986,950	30	616,555.2
2003	6,559,536	1,626,782,976	461,658,700	30	685,069.0
2004	6,731,809	1,691,899,008	480,309,725	31	709,208.7
2005	7,049,154	1,744,980,352	497,494,867	31	732,912.7
2006	7,746,146	1,851,694,720	532,233,047	30	802,044.5
2007	8,629,145	1,917,546,752	559,319,583	29	889,786.0
2008	9,231,047	1,990,655,744	589,725,773	29	953,226.7
2009	8,205,079	1,866,223,078	548,627,132	30	848,596.4
2010	8,747,796	2,075,193,413	617,409,982	31	905,944.1
2011	10,033,446	2,347,193,367	702,671,534	31	1,040,382.2
2012	11,053,498	2,456,292,294	740,196,106	31	1,132,762.7
2013	11,376,634	2,489,204,048	746,226,565	29	1,163,492.9
2014	11,649,723	2,539,886,774	760,474,019	29	1,192,641.6
2015	10,612,270	2,642,374,740	750,090,163	31	1,094,387.0
2016	11,143,956	2,732,611,350	749,030,133	31	1,166,051.7
2017	10,248,905	2,726,104,521	744,246,491	32	1,078,832.1
2018	13,323,406	3,277,299,125	893,564,480	31	1,426,488.9
2019	13,300,005	3,395,631,405	939,607,762	33	1,451,331.8
2020	13,318,788	3,489,306,791	984,218,931	33	1,454,492.5
2021	14,869,372	3,981,293,227	1,098,391,422	34	1,619,580.9

Crime

CRIME INDEX OFFENSES



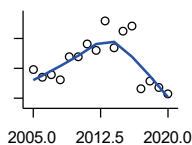
Kansas Bureau of Investigation, Note: Data are aggregated from reports by individual police departments and subject to be incomplete.

Year	County	State of Kansas	Non Metro Kansas	County Rank	Per 1000 or \$ Per Capita
2005	206	111,856	31,630	42	21.4
2006	186	110,032	.	44	19.3
2007	200	111,035	29,921	44	20.6
2008	184	93,996	27,342	42	19.0
2009	260	98,757	27,620	36	26.9
2010	272	98,354	26,909	35	28.2
2011	305	96,638	25,765	35	31.6
2012	290	98,914	26,963	36	29.7
2013	392	93,054	24,488	33	40.1
2014	283	86,323	23,341	35	29.0
2015	341	88,590	21,580	35	35.2
2016	353	90,589	21,565	30	36.9
2017	145	93,091	22,622	45	15.3
2018	185	92,062	20,325	38	19.8
2019	156	87,008	18,547	37	17.0
2020	128	87,346	17,762	45	14.0

County: county value. Kansas: state value. County Rank: highest county value ranked #1. (\$000): thousands of dollars. Nonmetro Kansas: Kansas total less Metropolitan Areas as defined by the Office of Management and Budget (OMB; released 3/6/2020). Per 1000: For nonmoney amounts, Per 1000=(county value / county population for the same year as the data) x 1000. \$ Per capita=(county value / county population for the same year as the data). Value= . indicates missing or suppressed data or value not calculated.

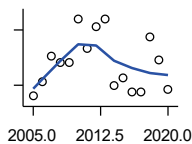
Crime

PROPERTY CRIMES



Kansas Bureau of Investigation, Note: Data are aggregated from reports by individual police departments and subject to be incomplete.

Year	County	State of Kansas	Non Metro Kansas	County Rank	Per 1000 or \$ Per Capita
2005	194	101,414	29,042	42	20.2
2006	170	99,110	.	43	17.6
2007	177	99,632	26,856	44	18.3
2008	163	83,964	24,367	42	16.8
2009	239	87,658	24,825	36	24.7
2010	239	87,926	24,133	35	24.8
2011	280	86,547	23,274	34	29.0
2012	259	88,707	24,220	36	26.5
2013	359	83,551	22,028	33	36.7
2014	268	76,794	20,858	34	27.4
2015	324	77,997	19,138	34	33.4
2016	340	79,549	19,207	28	35.6
2017	132	81,349	19,981	46	13.9
2018	157	79,695	17,769	38	16.8
2019	134	74,314	15,892	37	14.6
2020	114	73,450	15,100	41	12.4



VIOLENT CRIMES

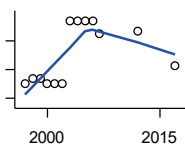
Kansas Bureau of Investigation, Note: Data are aggregated from reports by individual police departments and subject to be incomplete.

Year	County	State of Kansas	Non Metro Kansas	County Rank	Per 1000 or \$ Per Capita
2005	12	10,442	2,588	57	1.2
2006	16	10,922	.	51	1.7
2007	23	11,403	3,065	40	2.4
2008	21	10,032	2,975	44	2.2
2009	21	11,099	2,795	44	2.2
2010	33	10,428	2,776	34	3.4
2011	25	10,091	2,491	41	2.6
2012	31	10,207	2,743	37	3.2
2013	33	9,503	2,460	33	3.4
2014	15	9,529	2,483	51	1.5
2015	17	10,593	2,442	46	1.8
2016	13	11,040	2,358	46	1.4
2017	13	11,742	2,641	54	1.4
2018	28	12,367	2,556	38	3.0
2019	22	12,694	2,655	41	2.4
2020	14	13,896	2,662	52	1.5

County: county value. Kansas: state value. County Rank: highest county value ranked #1. (\$000): thousands of dollars. Nonmetro Kansas: Kansas total less Metropolitan Areas as defined by the Office of Management and Budget (OMB; released 3/6/2020). Per 1000: For nonmoney amounts, Per 1000=(county value / county population for the same year as the data) x 1000. \$ Per capita=(county value / county population for the same year as the data). Value= . indicates missing or suppressed data or value not calculated.

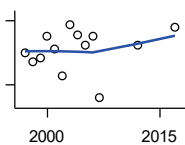
Agriculture

NUMBER OF FARMS



Kansas Agricultural Statistics, Kansas Farm Facts

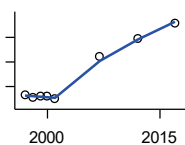
Year	County	State of Kansas	Non Metro Kansas	County Rank	Per 1000 or \$ Per Capita
1997	450	64,000	47,900	70	46.1
1998	460	65,000	48,850	72	46.9
1999	460	65,000	48,850	72	47.7
2000	450	64,000	48,030	72	46.6
2001	450	63,000	47,200	71	47.0
2002	450	63,000	47,200	71	46.5
2003	560	64,500	48,150	49	58.5
2004	560	64,500	48,150	49	59.0
2005	560	64,500	48,150	49	58.2
2006	560	64,000	47,650	47	58.0
2007	538	65,531	48,179	50	55.5
2012	543	61,773	45,655	44	55.6
2017	481	58,569	42,404	49	50.6



TOTAL ACRES HARVESTED

Kansas Agricultural Statistics, Kansas Farm Facts

Year	County	State of Kansas	Non Metro Kansas	County Rank	Per 1000 or \$ Per Capita
1997	270,360	22,846,000	19,430,580	25	27,675.3
1998	262,050	22,143,500	18,943,650	26	26,712.5
1999	265,680	21,708,900	18,581,750	25	27,531.6
2000	285,070	21,639,000	18,528,870	18	29,550.1
2001	273,370	21,847,900	18,689,750	22	28,538.5
2002	248,120	20,230,400	17,089,120	27	25,661.4
2003	295,900	21,827,700	18,661,920	14	30,903.4
2004	286,800	20,876,900	17,721,500	15	30,214.9
2005	277,530	21,936,500	18,807,930	22	28,855.3
2006	285,650	21,412,700	18,291,120	18	29,576.5
2007	227,557	19,886,655	17,164,743	34	23,464.3
2012	276,819	21,043,596	17,966,843	15	28,368.4
2017	293,778	21,837,465	18,543,057	17	30,924.0



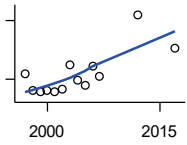
VALUE: LIVESTOCK AND POULTRY (\$000)

Kansas Agricultural Statistics, Kansas Farm Facts

Year	County	State of Kansas	Non Metro Kansas	County Rank	Per 1000 or \$ Per Capita
1997	32,667	2,806,445	2,500,305	23	3,343.9
1998	27,068	2,670,432	2,378,007	32	2,759.2
1999	30,739	2,849,061	2,554,528	29	3,185.4
2000	31,663	2,901,469	2,609,032	26	3,282.2
2001	24,374	2,693,274	2,437,187	36	2,544.5
2007	110,639	9,525,971	.	18	11,408.4
2012	147,576	11,476,571	10,883,216	18	15,123.6
2017	180,074	12,322,289	.	18	18,955.2

County: county value. Kansas: state value. County Rank: highest county value ranked #1. (\$000): thousands of dollars. Nonmetro Kansas: Kansas total less Metropolitan Areas as defined by the Office of Management and Budget (OMB; released 3/6/2020). Per 1000: For nonmoney amounts, Per 1000=(county value / county population for the same year as the data) x 1000. \$ Per capita=(county value / county population for the same year as the data). Value= . indicates missing or suppressed data or value not calculated.

Agriculture



VALUE:FIELD CROPS (\$000)
EXCLUDING GOVERNMENT
PROGRAM PAYMENTS

Kansas Agricultural Statistics, Kansas
Farm Facts

Year	County	State of Kansas	Non Metro Kansas	County Rank	Per 1000 or \$ Per Capita
1997	65,694	4,474,942	3,800,365	13	6,724.7
1998	47,990	3,594,319	3,124,409	25	4,891.9
1999	46,707	3,118,193	2,728,319	18	4,840.1
2000	48,918	2,915,660	2,540,052	14	5,070.8
2001	47,745	3,283,117	2,857,136	17	4,984.3
2002	49,465	3,011,855	2,560,580	11	5,115.8
2003	74,690	3,623,255	3,150,629	3	7,800.5
2004	59,603	3,445,688	2,896,603	11	6,279.3
2005	53,779	3,678,123	3,182,677	18	5,591.5
2006	73,838	4,308,716	3,684,132	10	7,645.3
2007	62,967	4,887,212	.	27	6,492.8
2012	125,850	6,983,993	6,044,551	12	12,897.1
2017	91,232	6,460,437	.	16	9,603.4

County: county value. Kansas: state value. County Rank: highest county value ranked #1. (\$000): thousands of dollars. Nonmetro Kansas: Kansas total less Metropolitan Areas as defined by the Office of Management and Budget (OMB; released 3/6/2020). Per 1000: For nonmoney amounts, Per 1000=(county value / county population for the same year as the data) x 1000. \$ Per capita=(county value / county population for the same year as the data). Value= . indicates missing or suppressed data or value not calculated.