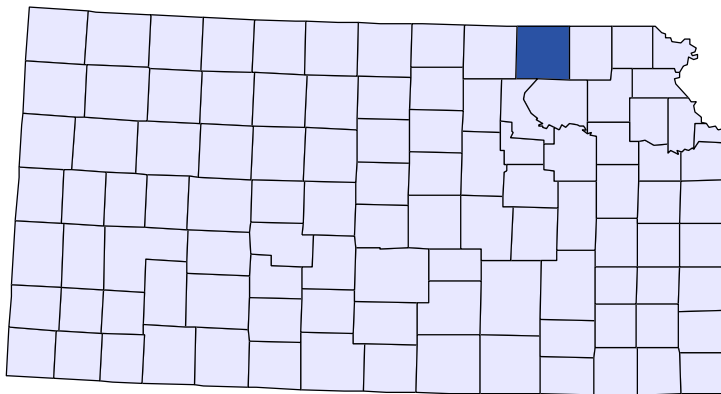




Kansas County Profiles

Marshall County



The University
of Kansas

Institute for Policy
& Social Research

KU INSTITUTE FOR POLICY
& SOCIAL RESEARCH
The University of Kansas

1541 Lilac Lane, Rm. 607
Blake Hall
Lawrence, KS 66045-3129

Foreword

The Kansas County Profile Report is published by the Institute for Policy & Social Research (IPSR) at the University of Kansas with support from the KU University Center project.* Special thanks to Xanthippe Wedel, senior research data engineer, who compiles and updates the county profiles and Genna Hurd, associate researcher, who provides editorial review.

County reports can be generated for any county in Kansas by simply clicking on the county from the web site:

<https://ipsr.ku.edu/ksdata/kcced/profiles/>

The Kansas County Profile Report contains 12 categories of information: Population, Vital Statistics and Health, Housing, Education, Social Environment, Business, Employment, Income, Banking, Government, Crime, and Agriculture. For more information about Kansas, please refer to the Kansas Statistical Abstract, available online at:

<https://ipsr.ku.edu/ksdata/ksah/>

We are always looking for ways to improve the Kansas County Profile Report and we welcome your suggestions and comments. Please address any correspondence to the Institute for Policy & Social Research, The University of Kansas, 607 Blake Hall, 1541 Lilac Lane, Lawrence, Kansas 66045-3129, e-mail ipsr@ku.edu or call 785-864-3701.

**The KU University Center is a collaborative effort led by the Institute for Policy & Social Research at the University of Kansas. This project is supported by the Economic Development Administration, U.S. Department of Commerce, through its University Center Program.*

The mission of EDA is to lead the federal economic development agenda by promoting innovation and competitiveness, preparing American regions for growth and success in the worldwide economy.

Kansas County Profiles Table of Contents

Population	
Total Population (Decennial Census)	1
Estimated Population (Current Population Reports)	2
Urban Population	2
Rural Population	3
Net Migration (Decade Ending...)	3
Median Age	3
Population (Age Groups)	
Population Under 18 (Decennial Census)	3
Population Age 18 and Over (Decennial Census)	4
Population Age 65 and Over (Decennial Census)	4
Population Age 85 and Over (Decennial Census)	4
Vital Statistics and Health	
Live Births	5
Deaths	5
Marriages	6
Divorces and Annulments	6
Physicians: M.D. Physicians	7
Physicians: D.O. Physicians	7
Dentists	8
Number of Hospitals	8
Number of Hospital Beds	9
Housing	
Housing Units (Decennial Census)	9
Housing Units (Estimated)	10
Occupied Housing Units	10
Owner Occupied Housing Units	10
Renter Occupied Housing Units	11
Vacant Housing Units	11
Median Value (\$): Owner Occupied Housing Units	11
Median Contract Rent (\$)	12
Fair Market Rent: 2 Bedrooms	12
Education	
Population Age 25 and Over	13
Percent of Population 25+ with High School or Higher Education	13
Percent of Population 25+ with Bachelors Degree or Higher Education	14
Public School Enrollment (FTE- School Year Beginning...)	14
Pupil/Teacher Ratio (School Year Beginning...)	15

Kansas County Profiles Table of Contents

Social Environment

Total Child Care Facilities	15
Preschools	16
Food Stamp Beneficiaries	16
Percent of Population Receiving Food Stamps	17
Estimated Number of People in Poverty	17
Estimated Percent of People in Poverty	18
Estimated Number of Related Children Age 5 to 17 in Families in Poverty	18
Estimated Percent of Related Children Age 5 to 17 in Families in Poverty	19
Estimated Number Under 18 in Poverty	19
Estimated Percent Under 18 in Poverty	20

Business

Establishments: Total	21
Establishments: 1-19 Employees	22
Establishments: 20-99 Employees	22
Establishments: 100-499 Employees	23
Establishments: 500 or More Employees	23
Establishments: Forestry, Fishing, Hunting, and Ag Support	24
Establishments: Mining	24
Establishments: Utilities	25
Establishments: Construction	25
Establishments: Manufacturing	26
Establishments: Wholesale Trade	26
Establishments: Retail Trade	27
Establishments: Transportation and Warehousing	27
Establishments: Information	28
Establishments: Finance and Insurance	28
Establishments: Real Estate, Rental, and Leasing	29
Establishments: Professional, Scientific, and Technical Services	29
Establishments: Management of Companies and Enterprises	30
Establishments: Admin, Support, Waste Management, and Remediation	30
Establishments: Educational Services	31
Establishments: Health Care and Social Assistance	31
Establishments: Arts, Entertainment, and Recreation	32
Establishments: Accommodation and Food Services	32
Establishments: Other Services	33

Kansas County Profiles Table of Contents

Business	
Total Annual Payroll (\$000)	34
Total Annual Payroll (\$000): Forestry, Fishing, Hunting, and Ag Support	35
Total Annual Payroll (\$000): Mining	35
Total Annual Payroll (\$000): Utilities	36
Total Annual Payroll (\$000): Construction	36
Total Annual Payroll (\$000): Manufacturing	37
Total Annual Payroll (\$000): Wholesale Trade	37
Total Annual Payroll (\$000): Retail Trade	38
Total Annual Payroll (\$000): Transportation and Warehousing	38
Total Annual Payroll (\$000): Information	39
Total Annual Payroll (\$000): Finance and Insurance	39
Total Annual Payroll (\$000): Real Estate, Rental, and Leasing	40
Total Annual Payroll (\$000): Professional, Scientific, and Technical Services	40
Total Annual Payroll (\$000): Management of Companies and Enterprises	41
Total Annual Payroll (\$000): Admin, Support, Waste Management, and Remediation	41
Total Annual Payroll (\$000): Educational Services	42
Total Annual Payroll (\$000): Health Care and Social Assistance	42
Total Annual Payroll (\$000): Arts, Entertainment, and Recreation	43
Total Annual Payroll (\$000): Accommodation and Food Services	43
Total Annual Payroll (\$000): Other Services	44
Nominal Taxable Retail Sales (Million\$)	44
Retail Pull Factor	45
Employment	
Civilian Labor Force (BLS - Place of Residence)	46
Employed (BLS - Place of Residence)	47
Unemployed (BLS - Place of Residence)	48
Unemployment Rate (BLS - Place of Residence)	49
BEA Employment: Total (Place of Work)	49
BEA Employment: Farm	50
BEA Employment: Non-Farm	50
Average Wage per Job (\$)	51
BEA Employment: Forestry, Fishing, Hunting, and Ag Support	51
BEA Employment: Mining	52
BEA Employment: Utilities	52
BEA Employment: Construction	53
BEA Employment: Manufacturing	53
BEA Employment: Wholesale Trade	54
BEA Employment: Retail Trade	54
BEA Employment: Transportation and Warehousing	55
BEA Employment: Information	55
BEA Employment: Finance and Insurance	56
BEA Employment: Real Estate, Rental, and Leasing	56
BEA Employment: Professional and Technical Services	57
BEA Employment: Management of Companies and Enterprises	57
BEA Employment: Administrative and Waste Services	58
BEA Employment: Educational Services	58
BEA Employment: Health Care and Social Assistance	59
BEA Employment: Arts, Entertainment, and Recreation	59
BEA Employment: Government and Government Enterprises	60
BEA Employment: Accommodation and Food Services	60
BEA Employment: Other Services, Except Public Administration	61

Kansas County Profiles Table of Contents

Income

BEA Per Capita Personal Income (\$)	61
Sources of Personal Income: Total Personal Income (\$000)	62
Sources of Personal Income: Wages And Salaries (\$000)	62
Sources of Personal Income: Proprietors-Farm (\$000)	63
Sources of Personal Income: Proprietors-Nonfarm (\$000)	63
Sources of Personal Income: Dividends, Interest, Rent (\$000)	64
Sources of Personal Income: Transfer Payments (\$000)	64
Sources of Personal Income: Less Social Insurance (\$000)	65
HUD Median Family Income	65
HUD 30% Low-To-Medium Income (LMI) Limit - 4 Persons	66
HUD 50% Low-To-Medium Income (LMI) Limit - 4 Persons	66
HUD 80% Low-To-Medium Income (LMI) Limit - 4 Persons	66

Banking

Bank Deposits (\$000)	67
Number of Banks	67
Number of Banking Offices	68

Government

Tangible Assessed Valuation (million\$)	68
Sales Tax Collections	69

Crime

Crime Index Offenses	69
Property Crimes	70
Violent Crimes	70

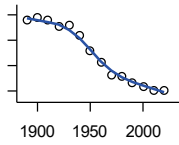
Agriculture

Number of Farms	71
Total Acres Harvested	71
Value: Livestock and Poultry (\$000)	71
Value: Field Crops (\$000) Excluding Government Program Payments	72

Population

DECENNIAL CENSUS:TOTAL POPULATION

U.S. Census Bureau: Decennial Census

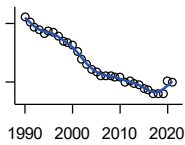


Year	County	State of Kansas	Non Metro Kansas	County Rank	Per 1000 or \$ Per Capita
1890	23,912	1,427,096	968,413	16	.
1900	24,355	1,470,495	981,206	16	.
1910	23,880	1,690,949	1,138,294	18	.
1920	22,730	1,769,257	1,153,525	22	.
1930	23,056	1,880,999	1,180,056	20	.
1940	20,986	1,801,028	1,097,216	23	.
1950	17,926	1,905,299	1,046,823	31	.
1960	15,598	2,178,611	1,021,510	33	.
1970	13,139	2,246,578	958,104	36	.
1980	12,787	2,363,679	980,085	37	.
1990	11,705	2,477,574	939,416	37	.
2000	10,965	2,688,418	959,507	38	.
2010	10,117	2,853,118	929,981	39	.
2020	10,038	2,937,880	892,006	39	.

County: county value. Kansas: state value. County Rank: highest county value ranked #1. (\$000): thousands of dollars. Nonmetro Kansas: Kansas total less Metropolitan Areas as defined by the Office of Management and Budget (OMB; released 3/6/2020). Per 1000: For nonmoney amounts, Per 1000=(county value / county population for the same year as the data) x 1000. \$ Per capita=(county value / county population for the same year as the data). Value= . indicates missing or suppressed data or value not calculated.

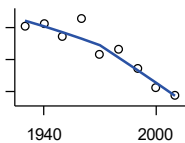
Population

ESTIMATED POPULATION



U.S. Census Bureau

Year	County	State of Kansas	Non Metro Kansas	County Rank	Per 1000 or \$ Per Capita
1990	11,670	2,481,349	938,607	37	.
1991	11,524	2,498,722	938,965	38	.
1992	11,389	2,532,394	942,759	38	.
1993	11,330	2,556,547	947,515	38	.
1994	11,257	2,580,513	952,178	38	.
1995	11,312	2,601,007	957,771	38	.
1996	11,276	2,614,554	959,455	38	.
1997	11,166	2,635,292	960,225	38	.
1998	11,034	2,660,598	960,569	38	.
1999	11,005	2,678,338	960,704	38	.
2000	10,933	2,693,681	959,230	38	.
2001	10,791	2,702,162	952,607	38	.
2002	10,585	2,713,535	945,985	38	.
2003	10,451	2,723,004	941,474	40	.
2004	10,312	2,734,373	937,623	40	.
2005	10,270	2,745,299	932,852	40	.
2006	10,171	2,762,931	928,809	40	.
2007	10,150	2,783,785	927,643	39	.
2008	10,174	2,808,076	926,248	40	.
2009	10,121	2,832,704	926,755	39	.
2010	10,111	2,858,190	930,028	40	.
2011	9,983	2,869,225	927,675	40	.
2012	10,026	2,885,257	925,152	39	.
2013	9,973	2,893,212	922,383	40	.
2014	9,945	2,900,475	917,854	40	.
2015	9,845	2,909,011	912,199	40	.
2016	9,789	2,910,844	905,099	39	.
2017	9,687	2,908,718	897,981	40	.
2018	9,715	2,911,359	892,656	40	.
2019	9,707	2,913,314	887,455	39	.
2020	10,014	2,935,880	889,750	39	.
2021	9,979	2,934,582	886,438	39	.



URBAN POPULATION

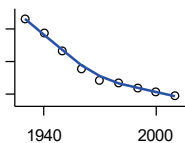
U.S. Census Bureau: Decennial Census

Year	County	State of Kansas	Non Metro Kansas	County Rank	Per 1000 or \$ Per Capita
1930	4,013	729,834	336,666	37	.
1940	4,055	753,941	349,228	39	.
1950	3,866	993,220	398,923	43	.
1960	4,143	1,328,741	457,447	42	.
1970	3,588	1,484,870	450,543	47	.
1980	3,670	1,575,899	474,769	46	.
1990	3,359	1,712,564	464,205	47	.
2000	3,057	1,920,081	488,011	51	.
2010	2,937	2,116,961	485,780	51	.

County: county value. Kansas: state value. County Rank: highest county value ranked #1. (\$000): thousands of dollars. Nonmetro Kansas: Kansas total less Metropolitan Areas as defined by the Office of Management and Budget (OMB; released 3/6/2020). Per 1000: For nonmoney amounts, Per 1000=(county value / county population for the same year as the data) x 1000. \$ Per capita=(county value / county population for the same year as the data). Value= . indicates missing or suppressed data or value not calculated.

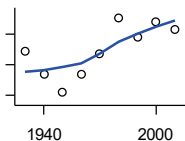
Population

RURAL POPULATION



U.S. Census Bureau

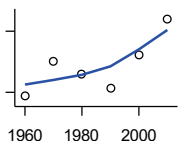
Year	County	State of Kansas	Non Metro Kansas	County Rank	Per 1000 or \$ Per Capita
1930	19,043	1,151,165	843,390	11	.
1940	16,931	1,047,087	747,988	13	.
1950	14,060	912,079	647,900	15	.
1960	11,455	849,870	564,063	19	.
1970	9,551	761,708	509,972	25	.
1980	9,117	787,780	505,873	26	.
1990	8,346	765,010	475,211	29	.
2000	7,908	768,337	471,900	32	.
2010	7,180	736,157	444,201	35	.



NET MIGRATION: DECADE ENDING...

calculated by the Institute for Policy and Social Research, The University of Kansas

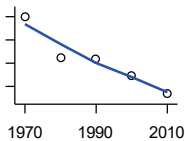
Year	County	State of Kansas	Non Metro Kansas	County Rank	Per 1000 or \$ Per Capita
1930	-2,105	-66,132	-101,869	79	-91.3
1940	-3,632	-192,649	-166,022	94	-173.1
1950	-4,825	-84,329	-158,379	99	-269.2
1960	-3,656	-38,999	-146,640	96	-234.4
1970	-2,327	-119,662	-105,116	90	-177.1
1980	64	-21,983	-6,184	40	5.0
1990	-1,176	-61,835	-79,274	81	-100.5
2000	-223	68,960	4,247	79	-20.3
2010	-685	5,578	-50,648	86	-67.7



MEDIAN AGE

U.S. Census Bureau: Decennial Census

Year	County	State of Kansas	Non Metro Kansas	County Rank	Per 1000 or \$ Per Capita
1960	37.6	26.9	.	20	.
1970	41.0	28.7	.	18	.
1980	39.8	30.1	.	17	.
1990	38.4	32.9	.	35	.
2000	41.7	35.2	.	28	.
2010	45.2	36.0	.	32	.



POPULATION UNDER 18 (DECENNIAL CENSUS)

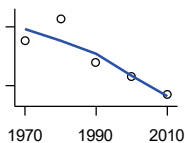
U.S. Census Bureau: Decennial Census

Year	County	State of Kansas	Non Metro Kansas	County Rank	Per 1000 or \$ Per Capita
1970	3,992	746,354	306,227	38	.
1980	3,129	649,035	263,919	41	.
1990	3,098	661,614	250,107	37	.
2000	2,738	712,993	250,757	40	.
2010	2,336	726,939	229,213	42	.

County: county value. Kansas: state value. County Rank: highest county value ranked #1. (\$000): thousands of dollars. Nonmetro Kansas: Kansas total less Metropolitan Areas as defined by the Office of Management and Budget (OMB; released 3/6/2020). Per 1000: For nonmoney amounts, Per 1000=(county value / county population for the same year as the data) x 1000. \$ Per capita=(county value / county population for the same year as the data). Value= . indicates missing or suppressed data or value not calculated.

Population

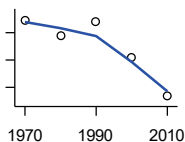
**POPULATION AGE 18 AND OVER
(DECENNIAL CENSUS)**



U.S. Census Bureau: Decennial Census

Year	County	State of Kansas	Non Metro Kansas	County Rank	Per 1000 or \$ Per Capita
1970	9,147	1,500,224	654,288	35	.
1980	9,704	1,714,282	716,684	37	.
1990	8,607	1,815,960	689,309	37	.
2000	8,227	1,975,425	709,154	38	.
2010	7,781	2,126,179	700,768	38	.

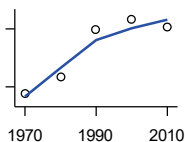
**POPULATION AGE 65 AND OVER
(DECENNIAL CENSUS)**



U.S. Census Bureau: Decennial Census

Year	County	State of Kansas	Non Metro Kansas	County Rank	Per 1000 or \$ Per Capita
1970	2,694	266,201	149,049	28	.
1980	2,573	306,263	164,932	33	.
1990	2,684	342,571	168,579	32	.
2000	2,414	356,229	161,769	35	.
2010	2,134	376,116	154,214	36	.

**POPULATION AGE 85 AND OVER
(DECENNIAL CENSUS)**



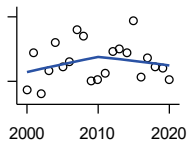
U.S. Census Bureau: Decennial Census

Year	County	State of Kansas	Non Metro Kansas	County Rank	Per 1000 or \$ Per Capita
1970	233	23,899	13,698	30	.
1980	277	33,455	18,804	36	.
1990	398	42,241	22,970	32	.
2000	425	51,770	26,644	32	.
2010	405	59,318	26,197	31	.

County: county value. Kansas: state value. County Rank: highest county value ranked #1. (\$000): thousands of dollars. Nonmetro Kansas: Kansas total less Metropolitan Areas as defined by the Office of Management and Budget (OMB; released 3/6/2020). Per 1000: For nonmoney amounts, Per 1000=(county value / county population for the same year as the data) x 1000. \$ Per capita=(county value / county population for the same year as the data). Value= . indicates missing or suppressed data or value not calculated.

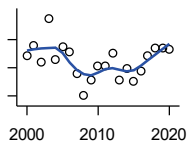
Vital Statistics and Health

BIRTHS (LIVE)



Kansas Department of Health and Environment

Year	County	State of Kansas	Non Metro Kansas	County Rank	Per 1000 or \$ Per Capita
2000	106	39,654	12,980	48	9.7
2001	123	38,832	12,527	42	11.4
2002	104	39,338	12,476	47	9.8
2003	115	39,353	12,342	42	11.0
2004	128	39,553	12,398	41	12.4
2005	117	39,701	12,382	40	11.4
2006	119	40,896	12,726	44	11.7
2007	134	41,951	12,990	39	13.2
2008	131	41,815	12,970	41	12.9
2009	110	41,388	12,949	45	10.9
2010	111	40,439	12,200	46	11.0
2011	114	39,628	12,098	43	11.4
2012	124	40,304	12,217	41	12.4
2013	125	38,805	11,877	40	12.5
2014	123	39,193	12,052	43	12.4
2015	138	39,126	11,836	39	14.0
2016	112	38,048	11,467	45	11.4
2017	121	36,464	10,968	39	12.5
2018	117	36,268	10,826	40	12.0
2019	116	35,395	10,506	39	12.0
2020	111	34,368	10,222	41	11.1



DEATHS

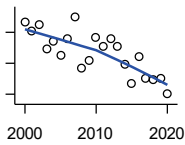
Kansas Department of Health and Environment

Year	County	State of Kansas	Non Metro Kansas	County Rank	Per 1000 or \$ Per Capita
2000	139	24,676	11,175	40	12.7
2001	146	24,590	10,807	38	13.5
2002	134	24,968	11,079	41	12.7
2003	165	24,417	10,615	36	15.8
2004	136	23,720	10,369	40	13.2
2005	145	24,632	10,599	38	14.1
2006	141	24,489	10,538	40	13.9
2007	126	24,413	10,601	42	12.4
2008	110	24,896	10,593	46	10.8
2009	121	23,997	9,938	41	12.0
2010	131	24,428	10,105	38	12.9
2011	131	25,114	10,520	39	13.1
2012	140	25,084	10,259	37	14.0
2013	121	25,347	10,249	44	12.1
2014	129	25,731	10,275	40	13.0
2015	120	26,611	10,539	40	12.2
2016	128	26,129	10,231	39	13.1
2017	139	26,725	10,452	38	14.3
2018	144	27,213	10,389	38	14.8
2019	144	27,312	10,569	38	14.8
2020	143	31,667	11,850	43	14.2

County: county value. Kansas: state value. County Rank: highest county value ranked #1. (\$000): thousands of dollars. Nonmetro Kansas: Kansas total less Metropolitan Areas as defined by the Office of Management and Budget (OMB; released 3/6/2020). Per 1000: For nonmoney amounts, Per 1000=(county value / county population for the same year as the data) x 1000. \$ Per capita=(county value / county population for the same year as the data). Value= . indicates missing or suppressed data or value not calculated.

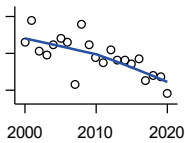
Vital Statistics and Health

MARRIAGES



Kansas Department of Health and Environment

Year	County	State of Kansas	Non Metro Kansas	County Rank	Per 1000 or \$ Per Capita
2000	87	20,426	7,333	36	7.9
2001	81	20,457	7,441	38	7.5
2002	85	19,783	6,794	36	8.0
2003	69	18,722	6,469	38	6.6
2004	74	19,174	6,756	40	7.2
2005	65	18,745	6,481	44	6.3
2006	76	18,836	6,433	39	7.5
2007	90	18,910	6,464	34	8.9
2008	57	18,717	6,283	47	5.6
2009	62	18,268	6,015	42	6.1
2010	77	18,150	5,925	39	7.6
2011	71	17,897	5,977	37	7.1
2012	76	18,154	5,752	35	7.6
2013	71	17,328	5,533	36	7.1
2014	59	17,655	5,535	42	5.9
2015	47	17,595	5,400	47	4.8
2016	64	17,948	5,340	38	6.5
2017	50	17,274	5,163	43	5.2
2018	49	16,362	4,999	46	5.0
2019	50	15,403	4,650	44	5.2
2020	40	14,038	4,066	42	4.0



DIVORCES AND ANNULMENTS

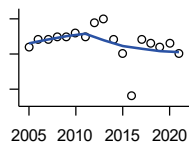
Kansas Department of Health and Environment

Year	County	State of Kansas	Non Metro Kansas	County Rank	Per 1000 or \$ Per Capita
2000	36	10,105	4,000	48	3.3
2001	48	9,885	3,818	38	4.4
2002	31	9,645	3,716	48	2.9
2003	29	8,644	3,464	47	2.8
2004	35	8,759	3,506	42	3.4
2005	38	8,476	3,311	39	3.7
2006	36	9,145	3,387	43	3.5
2007	13	9,347	3,402	74	1.3
2008	46	9,818	3,655	36	4.5
2009	35	10,333	3,463	42	3.5
2010	28	10,579	3,530	53	2.8
2011	25	10,445	3,347	52	2.5
2012	32	9,782	3,040	43	3.2
2013	26	9,085	2,973	47	2.6
2014	26	8,441	2,682	45	2.6
2015	24	8,036	2,704	47	2.4
2016	27	7,198	2,424	40	2.8
2017	15	6,494	2,315	54	1.5
2018	18	6,538	2,269	48	1.9
2019	17	6,398	2,357	50	1.8
2020	8	5,169	1,866	71	0.8

County: county value. Kansas: state value. County Rank: highest county value ranked #1. (\$000): thousands of dollars. Nonmetro Kansas: Kansas total less Metropolitan Areas as defined by the Office of Management and Budget (OMB; released 3/6/2020). Per 1000: For nonmoney amounts, Per 1000=(county value / county population for the same year as the data) x 1000. \$ Per capita=(county value / county population for the same year as the data). Value= . indicates missing or suppressed data or value not calculated.

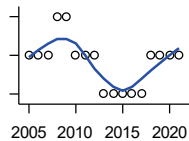
Vital Statistics and Health

PHYSICIANS: M.D. PHYSICIANS



Kansas Department of Health and Environment (1981-2005,2010-);Kansas Health Policy Authority (2006-2009)

Year	County	State of Kansas	Non Metro Kansas	County Rank	Per 1000 or \$ Per Capita
2005	17	4,241	912	25	1.7
2006	19	4,310	953	26	1.9
2007	19	5,309	1,046	28	1.9
2008	20	5,110	1,016	25	2.0
2009	20	5,249	996	25	2.0
2010	21	5,192	979	25	2.1
2011	20	5,243	983	25	2.0
2012	24	5,693	1,033	24	2.4
2013	25	6,106	1,071	25	2.5
2014	19	5,839	951	26	1.9
2015	15	5,703	855	28	1.5
2016	3	4,278	643	57	0.3
2017	19	6,332	1,047	27	2.0
2018	18	6,079	1,065	28	1.9
2019	17	6,435	1,036	28	1.8
2020	18	6,668	1,045	28	1.8
2021	15	6,745	1,042	29	1.5



PHYSICIANS: D.O. PHYSICIANS

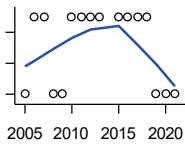
Kansas Department of Health and Environment (1981-2005,2010-);Kansas Health Policy Authority (2006-2009)

Year	County	State of Kansas	Non Metro Kansas	County Rank	Per 1000 or \$ Per Capita
2005	2	553	174	48	0.2
2006	2	508	171	45	0.2
2007	2	569	169	48	0.2
2008	3	558	166	31	0.3
2009	3	564	160	32	0.3
2010	2	583	169	45	0.2
2011	2	502	152	42	0.2
2012	2	718	200	46	0.2
2013	1	829	210	65	0.1
2014	1	817	189	62	0.1
2015	1	819	190	63	0.1
2016	1	632	136	58	0.1
2017	1	579	129	57	0.1
2018	2	871	164	40	0.2
2019	2	951	212	42	0.2
2020	2	1,018	204	42	0.2
2021	2	1,095	217	47	0.2

County: county value. Kansas: state value. County Rank: highest county value ranked #1. (\$000): thousands of dollars. Nonmetro Kansas: Kansas total less Metropolitan Areas as defined by the Office of Management and Budget (OMB; released 3/6/2020). Per 1000: For nonmoney amounts, Per 1000=(county value / county population for the same year as the data) x 1000. \$ Per capita=(county value / county population for the same year as the data). Value= . indicates missing or suppressed data or value not calculated.

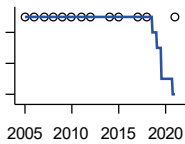
Vital Statistics and Health

DENTISTS



Kansas Department of Health and Environment (1981-2006,2010-); Kansas Health Policy Authority (2007-2009)

Year	County	State of Kansas	Non Metro Kansas	County Rank	Per 1000 or \$ Per Capita
2005	3	1,347	363	48	0.3
2006	4	1,381	361	43	0.4
2007	4	1,335	350	42	0.4
2008	3	1,392	353	46	0.3
2009	3	1,353	350	46	0.3
2010	4	1,401	365	42	0.4
2011	4	1,338	346	40	0.4
2012	4	1,434	392	46	0.4
2013	4	1,212	328	40	0.4
2015	4	1,240	327	40	0.4
2016	4	1,456	350	39	0.4
2017	4	1,467	350	40	0.4
2018	4	1,604	359	39	0.4
2019	3	1,646	355	48	0.3
2020	3	1,646	355	48	0.3
2021	3	1,688	362	49	0.3



NUMBER OF HOSPITALS

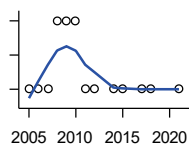
American Hospital Association, American Hospital Association Guide to the Health Care Field

Year	County	State of Kansas	Non Metro Kansas	County Rank	Per 1000 or \$ Per Capita
2005	1	158	105	96	.
2006	1	158	105	96	.
2007	1	159	104	95	.
2008	1	159	104	95	.
2009	1	158	105	96	.
2010	1	158	104	96	.
2011	1	158	103	96	.
2012	1	157	103	96	.
2014	1	156	.	96	.
2015	1	155	103	96	.
2017	1	157	102	96	.
2018	1	154	99	95	.
2021	1	151	.	95	.

County: county value. Kansas: state value. County Rank: highest county value ranked #1. (\$000): thousands of dollars. Nonmetro Kansas: Kansas total less Metropolitan Areas as defined by the Office of Management and Budget (OMB; released 3/6/2020). Per 1000: For nonmoney amounts, Per 1000=(county value / county population for the same year as the data) x 1000. \$ Per capita=(county value / county population for the same year as the data). Value= . indicates missing or suppressed data or value not calculated.

Vital Statistics and Health

NUMBER OF HOSPITAL BEDS

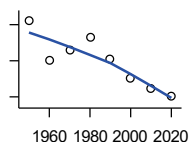


Kansas Department of Health and Environment

Year	County	State of Kansas	Non Metro Kansas	County Rank	Per 1000 or \$ Per Capita
2005	25	12,389	5,687	85	2.4
2006	25	11,992	5,514	85	2.5
2007	25	12,171	5,637	84	2.5
2008	27	12,332	5,700	70	2.7
2009	27	12,283	5,652	68	2.7
2010	27	12,218	5,521	68	2.7
2011	25	12,182	5,335	85	2.5
2012	25	12,002	5,355	85	2.5
2014	25	12,034	.	84	2.5
2015	25	11,926	5,330	85	2.5
2017	25	11,491	4,825	83	2.6
2018	25	11,448	4,583	82	2.6
2021	25	11,199	.	76	2.5

Housing

HOUSING UNITS (DECENNIAL)



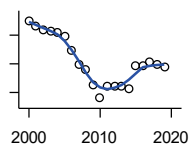
U.S. Census Bureau: Decennial Census

Year	County	State of Kansas	Non Metro Kansas	County Rank	Per 1000 or \$ Per Capita
1950	5,807	586,650	328,210	30	323.9
1960	5,263	672,899	329,380	31	337.4
1970	5,405	789,735	363,824	32	411.4
1980	5,584	955,207	416,877	37	436.7
1990	5,269	1,044,112	417,062	37	450.1
2000	4,999	1,131,395	422,218	38	455.9
2010	4,866	1,233,215	424,050	39	481.0
2020	4,762	1,275,689	413,120	39	474.4

County: county value. Kansas: state value. County Rank: highest county value ranked #1. (\$000): thousands of dollars. Nonmetro Kansas: Kansas total less Metropolitan Areas as defined by the Office of Management and Budget (OMB; released 3/6/2020). Per 1000: For nonmoney amounts, Per 1000=(county value / county population for the same year as the data) x 1000. \$ Per capita=(county value / county population for the same year as the data). Value= . indicates missing or suppressed data or value not calculated.

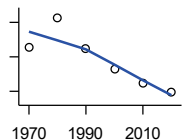
Housing

HOUSING UNITS (ESTIMATED)



U.S. Census Bureau

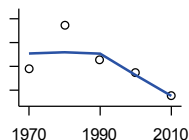
Year	County	State of Kansas	Non Metro Kansas	County Rank	Per 1000 or \$ Per Capita
2000	5,000	1,134,529	422,560	38	456.0
2001	4,992	1,146,858	423,876	38	462.6
2002	4,985	1,160,129	425,089	38	470.9
2003	4,982	1,171,620	425,936	38	476.7
2004	4,980	1,184,702	426,593	39	482.9
2005	4,974	1,195,791	426,964	39	484.3
2006	4,949	1,206,692	426,713	39	486.6
2007	4,925	1,217,608	426,090	39	485.2
2008	4,915	1,225,625	425,768	39	483.1
2009	4,889	1,230,552	424,776	39	483.1
2010	4,865	1,234,456	424,174	39	480.9
2011	4,887	1,238,052	424,549	39	489.5
2012	4,885	1,241,992	425,116	39	487.2
2013	4,885	1,246,675	425,699	39	489.8
2014	4,882	1,253,284	426,269	39	490.9
2015	4,921	1,258,999	426,844	39	499.8
2016	4,921	1,265,684	427,465	39	502.7
2017	4,928	1,273,536	427,746	39	508.7
2018	4,923	1,280,649	428,099	39	506.7
2019	4,920	1,288,401	428,495	39	506.9



OCCUPIED HOUSING UNITS

U.S. Census Bureau: Decennial Census

Year	County	State of Kansas	Non Metro Kansas	County Rank	Per 1000 or \$ Per Capita
1970	4,712	727,364	326,494	33	358.6
1980	5,053	872,239	371,693	37	395.2
1990	4,689	944,726	365,901	37	400.6
2000	4,458	1,037,891	375,313	38	406.6
2010	4,300	1,112,096	370,269	38	425.0
2020	4,195	1,151,360	356,330	38	417.9



OWNER OCCUPIED HOUSING UNITS

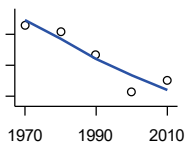
U.S. Census Bureau: Decennial Census

Year	County	State of Kansas	Non Metro Kansas	County Rank	Per 1000 or \$ Per Capita
1970	3,582	502,585	236,338	33	272.6
1980	3,944	612,433	277,096	37	308.4
1990	3,657	641,762	263,099	37	312.4
2000	3,544	718,703	271,350	38	323.2
2010	3,350	753,532	261,763	38	331.1

County: county value. Kansas: state value. County Rank: highest county value ranked #1. (\$000): thousands of dollars. Nonmetro Kansas: Kansas total less Metropolitan Areas as defined by the Office of Management and Budget (OMB; released 3/6/2020). Per 1000: For nonmoney amounts, Per 1000=(county value / county population for the same year as the data) x 1000. \$ Per capita=(county value / county population for the same year as the data). Value= . indicates missing or suppressed data or value not calculated.

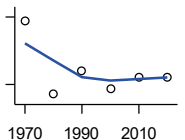
Housing

RENTER OCCUPIED HOUSING UNITS



U.S. Census Bureau: Decennial Census

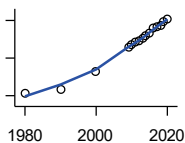
Year	County	State of Kansas	Non Metro Kansas	County Rank	Per 1000 or \$ Per Capita
1970	1,130	224,779	90,156	35	86.0
1980	1,109	259,806	94,597	36	86.7
1990	1,032	302,964	102,802	39	88.2
2000	914	319,188	103,963	44	83.4
2010	950	358,564	108,506	44	93.9



VACANT HOUSING UNITS

U.S. Census Bureau: Decennial Census

Year	County	State of Kansas	Non Metro Kansas	County Rank	Per 1000 or \$ Per Capita
1970	690	60,058	35,954	17	52.5
1980	528	77,912	41,584	41	41.3
1990	580	99,386	51,161	43	49.6
2000	541	93,309	46,904	46	49.3
2010	566	121,119	53,781	52	55.9
2020	567	124,329	56,790	53	56.5



MEDIAN VALUE (\$): OWNER OCCUPIED HOUSING UNITS

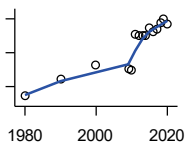
U.S. Census Bureau, Decennial Census (- 2000), (2009 -) American Community Survey five-year average ending in year shown.

Year	County	State of Kansas	Non Metro Kansas	County Rank	Per 1000 or \$ Per Capita
1980	22,200	37,800	.	88	.
1990	26,300	52,200	.	85	.
2000	46,200	83,500	.	70	.
2009	71,400	118,500	.	55	.
2010	74,700	122,600	.	57	.
2011	76,400	125,500	.	55	.
2012	77,700	127,400	.	54	.
2013	81,700	128,400	.	50	.
2014	83,300	129,400	.	50	.
2015	86,700	132,000	.	48	.
2016	92,000	135,300	.	39	.
2017	93,400	139,200	.	42	.
2018	94,900	145,400	.	48	.
2019	98,900	151,900	.	49	.
2020	101,600	157,600	.	47	.

County: county value. Kansas: state value. County Rank: highest county value ranked #1. (\$000): thousands of dollars. Nonmetro Kansas: Kansas total less Metropolitan Areas as defined by the Office of Management and Budget (OMB; released 3/6/2020). Per 1000: For nonmoney amounts, Per 1000=(county value / county population for the same year as the data) x 1000. \$ Per capita=(county value / county population for the same year as the data). Value= . indicates missing or suppressed data or value not calculated.

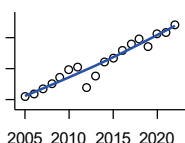
Housing

MEDIAN CONTRACT RENT (\$)



U.S. Census Bureau, Decennial Census (- 2000), (2009 -) American Community Survey five-year average ending in year shown.

Year	County	State of Kansas	Non Metro Kansas	County Rank	Per 1000 or \$ Per Capita
1980	143	219	.	90	.
1990	241	372	.	87	.
2000	324	498	.	89	.
2009	305	491	.	68	.
2010	299	507	.	76	.
2011	508	699	.	67	.
2012	503	715	.	79	.
2013	498	732	.	87	.
2014	499	748	.	92	.
2015	544	757	.	77	.
2016	524	775	.	88	.
2017	537	801	.	93	.
2018	577	831	.	83	.
2019	596	850	.	81	.
2020	572	863	.	93	.



FAIR MARKET RENT: 2 BEDROOMS

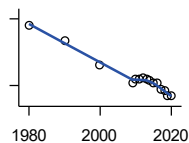
U.S. Department of Housing and Urban Development (HUD)

Year	County	State of Kansas	Non Metro Kansas	County Rank	Per 1000 or \$ Per Capita
2005	509	.	.	42	.
2006	520	.	.	44	.
2007	536	.	.	44	.
2008	550	628	.	45	.
2009	573	653	.	44	.
2010	596	678	.	46	.
2011	605	684	.	46	.
2012	540	660	.	105	.
2013	577	712	.	105	.
2014	622	746	.	105	.
2015	634	756	.	105	.
2016	658	781	.	105	.
2017	681	811	.	105	.
2018	697	815	.	105	.
2019	672	828	.	105	.
2020	714	855	.	105	.
2021	718	874	.	105	.
2022	742	879	.	105	.

County: county value. Kansas: state value. County Rank: highest county value ranked #1. (\$000): thousands of dollars. Nonmetro Kansas: Kansas total less Metropolitan Areas as defined by the Office of Management and Budget (OMB; released 3/6/2020). Per 1000: For nonmoney amounts, Per 1000=(county value / county population for the same year as the data) x 1000. \$ Per capita=(county value / county population for the same year as the data). Value= . indicates missing or suppressed data or value not calculated.

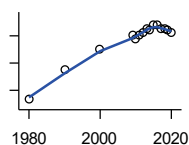
Education

POPULATION AGE 25+



U.S. Census Bureau, Decennial Census (- 2000), (2009 -) American Community Survey five-year average ending in year shown.

Year	County	State of Kansas	Non Metro Kansas	County Rank	Per 1000 or \$ Per Capita
1980	8,365	1,388,102	596,639	.	.
1990	8,001	1,565,936	608,745	.	.
2000	7,460	1,701,207	618,131	.	.
2009	7,069	1,775,427	600,188	.	.
2010	7,156	1,802,904	608,716	.	.
2011	7,150	1,822,400	610,386	.	.
2012	7,166	1,838,079	611,103	.	.
2013	7,135	1,850,010	610,374	.	.
2014	7,122	1,861,894	609,612	.	.
2015	7,055	1,869,698	606,967	.	.
2016	7,046	1,878,495	604,563	.	.
2017	6,921	1,886,741	601,076	.	.
2018	6,893	1,894,675	598,487	.	.
2019	6,779	1,902,279	595,501	.	.
2020	6,779	1,911,990	593,923	.	.



PERCENT HS GRADUATE OR HIGHER AGE 25+

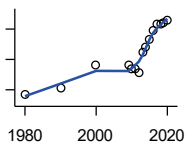
U.S. Census Bureau, Decennial Census (- 2000), (2009 -) American Community Survey five-year average ending in year shown.

Year	County	State of Kansas	Non Metro Kansas	County Rank	Per 1000 or \$ Per Capita
1980	66.6	73.3	.	76	.
1990	77.5	81.3	.	55	.
2000	85.1	86.0	.	45	.
2009	90.1	89.0	.	33	.
2010	88.7	89.2	.	57	.
2011	90.2	89.5	.	41	.
2012	91.4	89.7	.	27	.
2013	92.8	89.8	.	14	.
2014	92.3	90.0	.	24	.
2015	94.2	90.2	.	9	.
2016	93.9	90.3	.	16	.
2017	92.7	90.5	.	27	.
2018	92.7	90.7	.	31	.
2019	92.2	91.0	.	44	.
2020	91.3	91.4	.	62	.

County: county value. Kansas: state value. County Rank: highest county value ranked #1. (\$000): thousands of dollars. Nonmetro Kansas: Kansas total less Metropolitan Areas as defined by the Office of Management and Budget (OMB; released 3/6/2020). Per 1000: For nonmoney amounts, Per 1000=(county value / county population for the same year as the data) x 1000. \$ Per capita=(county value / county population for the same year as the data). Value= . indicates missing or suppressed data or value not calculated.

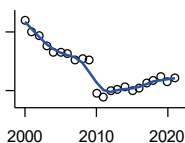
Education

PERCENT BACHELORS DEGREE OR HIGHER AGE 25+



U.S. Census Bureau, Decennial Census (- 2000), (2009 -) American Community Survey five-year average ending in year shown.

Year	County	State of Kansas	Non Metro Kansas	County Rank	Per 1000 or \$ Per Capita
1980	9.4	17.0	.	89	.
1990	10.2	21.1	.	100	.
2000	13.2	25.8	.	97	.
2009	13.2	28.8	.	101	.
2010	12.7	29.3	.	103	.
2011	12.8	29.7	.	104	.
2012	12.3	30.0	.	104	.
2013	15.0	30.3	.	99	.
2014	15.7	30.7	.	97	.
2015	16.6	31.0	.	91	.
2016	17.9	31.6	.	85	.
2017	18.6	32.3	.	80	.
2018	18.6	32.9	.	80	.
2019	18.9	33.4	.	82	.
2020	19.2	33.9	.	85	.



PUBLIC SCHOOL ENROLLMENT (FTE) SCHOOL YEAR BEGINNING...

Kansas State Department of Education

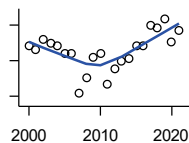
Year	County	State of Kansas	Non Metro Kansas	County Rank	Per 1000 or \$ Per Capita
2000	2,320.0	448,150.8	166,722.5	38	211.6
2001	2,202.9	447,047.1	164,365.0	38	204.1
2002	2,158.9	444,860.3	161,555.4	38	204.0
2003	2,058.3	443,620.6	159,130.2	38	196.9
2004	1,995.3	441,957.2	156,566.3	38	193.5
2005	1,989.3	442,708.4	155,197.2	38	193.7
2006	1,976.5	444,878.7	153,842.3	38	194.3
2007	1,915.0	446,831.3	152,337.1	38	188.7
2008	1,924.7	447,730.0	150,572.7	38	189.2
2009	1,908.3	453,202.5	151,246.8	38	188.5
2010	1,569.0	455,405.0	151,023.8	44	155.1
2011	1,528.4	456,000.5	150,257.9	43	153.1
2012	1,603.0	458,496.4	150,463.0	42	159.9
2013	1,611.5	461,950.0	150,420.9	42	161.6
2014	1,635.3	464,395.4	150,499.4	41	164.4
2015	1,598.5	463,504.0	149,539.3	42	162.4
2016	1,619.0	459,920.3	147,293.5	42	165.4
2017	1,675.9	477,977.9	152,096.3	41	173.0
2018	1,698.1	476,481.7	150,456.8	40	174.8
2019	1,740.5	476,525.1	150,045.2	39	179.3
2020	1,688.5	462,088.0	146,369.6	40	168.2
2021	1,730.0	463,652.4	147,500.4	40	173.4

County: county value. Kansas: state value. County Rank: highest county value ranked #1. (\$000): thousands of dollars. Nonmetro Kansas: Kansas total less Metropolitan Areas as defined by the Office of Management and Budget (OMB; released 3/6/2020). Per 1000: For nonmoney amounts, Per 1000=(county value / county population for the same year as the data) x 1000. \$ Per capita=(county value / county population for the same year as the data). Value= . indicates missing or suppressed data or value not calculated.

Education

PUPIL/TEACHER RATIO SCHOOL YEAR BEGINNING...

Kansas State Department of Education

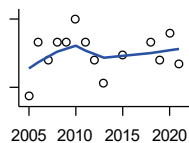


Year	County	State of Kansas	Non Metro Kansas	County Rank	Per 1000 or \$ Per Capita
2000	12.4	15.4	13.9	68	.
2001	12.3	15.3	13.8	70	.
2002	12.6	15.4	13.9	59	.
2003	12.5	15.5	13.8	60	.
2004	12.4	15.3	13.6	61	.
2005	12.2	15.0	13.4	62	.
2006	12.2	14.7	13.2	57	.
2007	11.1	14.6	13.1	79	.
2008	11.5	14.4	12.9	70	.
2009	12.1	14.8	13.2	63	.
2010	12.2	15.2	13.6	65	.
2011	11.4	15.1	13.5	80	.
2012	11.8	15.1	13.5	73	.
2013	12.0	15.1	13.5	72	.
2014	12.1	15.0	13.6	66	.
2015	12.4	15.2	13.9	63	.
2016	12.4	15.1	13.7	64	.
2017	13.0	15.5	13.9	52	.
2018	12.9	15.3	13.8	54	.
2019	13.2	15.2	13.7	46	.
2020	12.5	14.7	13.4	49	.
2021	12.8	14.8	13.5	45	.

Social Environment

CHILD CARE FACILITIES: TOTAL CHILD CARE FACILITIES

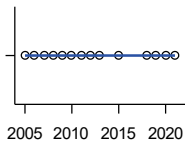
Kansas Department of Health and Environment, Bureau of Adult and Child Care



Year	County	State of Kansas	Non Metro Kansas	County Rank	Per 1000 or \$ Per Capita
2005	33	8,258	3,378	46	3.2
2006	45	8,442	3,429	37	4.4
2007	41	8,241	3,317	39	4.0
2008	45	8,011	3,150	37	4.4
2009	45	7,853	3,066	35	4.4
2010	50	7,354	2,858	33	4.9
2011	45	6,835	2,623	32	4.5
2012	41	6,346	2,409	32	4.1
2013	36	5,754	2,179	33	3.6
2015	42	5,289	2,146	29	4.3
2018	45	4,607	1,904	22	4.6
2019	41	4,287	1,774	24	4.2
2020	47	4,274	1,798	21	4.7
2021	40	4,002	1,700	21	4.0

County: county value. Kansas: state value. County Rank: highest county value ranked #1. (\$000): thousands of dollars. Nonmetro Kansas: Kansas total less Metropolitan Areas as defined by the Office of Management and Budget (OMB; released 3/6/2020). Per 1000: For nonmoney amounts, Per 1000=(county value / county population for the same year as the data) x 1000. \$ Per capita=(county value / county population for the same year as the data). Value= . indicates missing or suppressed data or value not calculated.

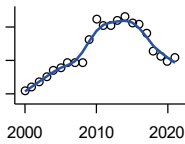
Social Environment



**CHILD CARE FACILITIES:
PRESCHOOLS**

Kansas Department of Health and Environment, Bureau of Adult and Child Care

Year	County	State of Kansas	Non Metro Kansas	County Rank	Per 1000 or \$ Per Capita
2005	0	243	140	105	0.0
2006	0	221	127	105	0.0
2007	0	208	119	105	0.0
2008	0	204	114	105	0.0
2009	0	194	107	105	0.0
2010	0	194	112	105	0.0
2011	0	209	123	105	0.0
2012	0	201	121	105	0.0
2013	0	140	84	105	0.0
2015	0	185	113	105	0.0
2018	0	150	94	105	0.0
2019	0	134	83	105	0.0
2020	0	126	78	105	0.0
2021	0	120	74	105	0.0



FOOD STAMP BENEFICIARIES

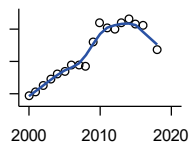
Kansas Social and Rehabilitation Services

Year	County	State of Kansas	Non Metro Kansas	County Rank	Per 1000 or \$ Per Capita
2000	318	110,619	44,825	52	29.0
2001	340	117,241	46,741	52	31.5
2002	370	131,726	52,342	51	35.0
2003	406	155,908	61,280	50	38.8
2004	438	167,971	65,852	49	42.5
2005	453	175,710	67,261	49	44.1
2006	484	182,821	67,487	47	47.6
2007	486	184,035	66,979	47	47.9
2008	483	187,377	67,160	47	47.5
2009	625	208,007	73,637	45	61.8
2010	748	259,609	90,919	45	73.9
2011	710	296,542	101,155	47	71.1
2012	706	303,257	102,478	46	70.4
2013	743	316,424	105,345	45	74.5
2014	763	301,377	100,761	44	76.7
2015	725	277,614	93,353	44	73.6
2016	713	258,412	88,343	44	72.8
2017	662	239,592	82,070	44	68.3
2018	559	219,738	75,208	48	57.5
2019	525	205,261	69,899	47	54.1
2020	494	198,457	66,721	47	49.2
2021	517	203,424	68,883	47	51.8

County: county value. Kansas: state value. County Rank: highest county value ranked #1. (\$000): thousands of dollars. Nonmetro Kansas: Kansas total less Metropolitan Areas as defined by the Office of Management and Budget (OMB; released 3/6/2020). Per 1000: For nonmoney amounts, Per 1000=(county value / county population for the same year as the data) x 1000. \$ Per capita=(county value / county population for the same year as the data). Value= . indicates missing or suppressed data or value not calculated.

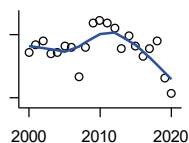
Social Environment

PERCENT OF POPULATION RECEIVING FOOD STAMPS



U.S. Dept. of Agriculture Food and Nutrition Service (1990-1997); Kansas Social and Rehabilitation Services (1998-)

Year	County	State of Kansas	Non Metro Kansas	County Rank	Per 1000 or \$ Per Capita
2000	2.9	4.1	.	75	.
2001	3.1	4.3	.	75	.
2002	3.5	4.9	.	69	.
2003	3.9	5.7	.	75	.
2004	4.2	6.2	.	72	.
2005	4.4	6.4	.	71	.
2006	4.8	6.6	.	65	.
2007	4.8	6.6	.	64	.
2008	4.7	6.7	.	62	.
2009	6.2	7.4	.	44	.
2010	7.4	9.1	.	47	.
2011	7.1	10.3	.	59	.
2012	7.0	10.5	.	62	.
2013	7.4	10.9	.	57	.
2014	7.6	10.4	.	51	.
2015	7.3	9.6	.	49	.
2016	7.2	8.9	.	46	.
2018	5.7	7.5	.	59	.



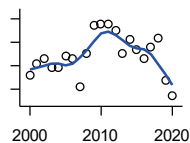
ESTIMATED NUMBER OF PEOPLE IN POVERTY

U.S. Census Bureau, Small Area Income and Poverty Estimates

Year	County	State of Kansas	Non Metro Kansas	County Rank	Per 1000 or \$ Per Capita
2000	1,016	235,087	98,984	43	92.7
2001	1,054	252,134	106,257	43	97.7
2002	1,073	265,673	107,542	43	101.4
2003	1,011	278,163	107,323	43	96.7
2004	1,016	297,733	111,534	43	98.5
2005	1,048	310,667	118,768	44	102.0
2006	1,042	327,102	123,700	45	102.4
2007	898	301,828	111,953	48	88.5
2008	1,037	307,804	113,015	45	101.9
2009	1,153	359,692	123,394	42	113.9
2010	1,168	374,677	131,502	43	115.4
2011	1,158	383,859	134,912	44	116.0
2012	1,134	392,095	133,800	45	113.1
2013	1,035	391,718	134,067	47	103.8
2014	1,094	381,506	130,213	45	110.0
2015	1,047	366,069	123,073	44	106.3
2016	995	343,773	121,314	45	101.6
2017	1,032	335,371	116,854	44	106.5
2018	1,068	336,892	114,490	44	109.9
2019	896	319,931	110,692	47	92.3
2020	819	300,931	100,998	47	81.6

County: county value. Kansas: state value. County Rank: highest county value ranked #1. (\$000): thousands of dollars. Nonmetro Kansas: Kansas total less Metropolitan Areas as defined by the Office of Management and Budget (OMB; released 3/6/2020). Per 1000: For nonmoney amounts, Per 1000=(county value / county population for the same year as the data) x 1000. \$ Per capita=(county value / county population for the same year as the data). Value= . indicates missing or suppressed data or value not calculated.

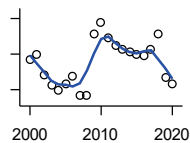
Social Environment



ESTIMATED % OF PEOPLE IN POVERTY

U.S. Census Bureau, Small Area Income and Poverty Estimates

Year	County	State of Kansas	Non Metro Kansas	County Rank	Per 1000 or \$ Per Capita
2000	9.6	8.9	.	69	.
2001	10.1	9.5	.	74	.
2002	10.3	10.0	.	71	.
2003	9.9	10.4	.	76	.
2004	9.9	11.1	.	80	.
2005	10.4	11.7	.	82	.
2006	10.3	12.2	.	89	.
2007	9.1	11.2	.	91	.
2008	10.5	11.3	.	70	.
2009	11.7	13.2	.	66	.
2010	11.8	13.5	.	64	.
2011	11.8	13.8	.	73	.
2012	11.5	14.0	.	71	.
2013	10.5	13.9	.	88	.
2014	11.1	13.5	.	77	.
2015	10.7	12.9	.	80	.
2016	10.3	12.2	.	87	.
2017	10.8	11.9	.	80	.
2018	11.2	11.9	.	72	.
2019	9.4	11.3	.	92	.
2020	8.7	10.6	.	95	.



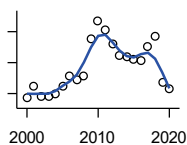
EST. NUMBER OF RELATED CHILDREN AGE 5 TO 17 IN FAMILIES IN POVERTY

U.S. Census Bureau, Small Area Income and Poverty Estimates

Year	County	State of Kansas	Non Metro Kansas	County Rank	Per 1000 or \$ Per Capita
2000	214	50,388	21,854	45	19.5
2001	219	53,755	23,094	44	20.3
2002	196	52,453	21,423	43	18.5
2003	185	55,419	21,809	47	17.7
2004	180	59,392	22,313	48	17.5
2005	186	60,203	24,244	51	18.1
2006	195	64,427	25,326	49	19.2
2007	174	61,149	23,639	51	17.1
2008	173	59,842	22,661	49	17.0
2009	242	71,850	26,251	42	23.9
2010	256	81,077	29,804	44	25.3
2011	239	82,311	29,306	46	23.9
2012	229	87,594	29,781	46	22.8
2013	225	84,325	29,253	46	22.6
2014	222	83,873	29,354	48	22.3
2015	219	78,192	27,482	47	22.2
2016	218	67,810	25,074	45	22.3
2017	226	67,873	25,032	46	23.3
2018	243	68,153	24,928	42	25.0
2019	193	64,613	23,117	49	19.9
2020	187	59,792	21,143	46	18.6

County: county value. Kansas: state value. County Rank: highest county value ranked #1. (\$000): thousands of dollars. Nonmetro Kansas: Kansas total less Metropolitan Areas as defined by the Office of Management and Budget (OMB; released 3/6/2020). Per 1000: For nonmoney amounts, Per 1000=(county value / county population for the same year as the data) x 1000. \$ Per capita=(county value / county population for the same year as the data). Value= . indicates missing or suppressed data or value not calculated.

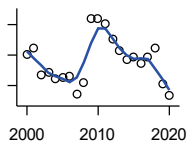
Social Environment



EST. % OF RELATED CHILDREN AGE 5 TO 17 IN FAMILIES IN POVERTY

U.S. Census Bureau, Small Area Income and Poverty Estimates

Year	County	State of Kansas	Non Metro Kansas	County Rank	Per 1000 or \$ Per Capita
2000	10.7	10.0	.	74	.
2001	11.5	10.8	.	69	.
2002	10.8	10.5	.	65	.
2003	10.8	11.3	.	73	.
2004	11.0	12.5	.	80	.
2005	11.5	12.8	.	80	.
2006	12.1	13.2	.	76	.
2007	11.9	12.6	.	78	.
2008	12.1	12.3	.	73	.
2009	14.5	14.7	.	66	.
2010	15.7	15.9	.	61	.
2011	15.1	16.2	.	66	.
2012	14.2	17.2	.	77	.
2013	13.5	16.5	.	78	.
2014	13.4	16.4	.	81	.
2015	13.2	15.3	.	78	.
2016	13.1	13.2	.	76	.
2017	14.0	13.4	.	71	.
2018	14.7	13.5	.	67	.
2019	11.7	12.9	.	81	.
2020	11.3	11.9	.	85	.



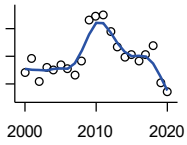
ESTIMATED NUMBER UNDER 18 IN POVERTY

U.S. Census Bureau, Small Area Income and Poverty Estimates

Year	County	State of Kansas	Non Metro Kansas	County Rank	Per 1000 or \$ Per Capita
2000	325	82,619	34,843	46	29.6
2001	337	87,487	36,724	45	31.2
2002	293	84,181	32,870	44	27.7
2003	296	93,896	36,004	47	28.3
2004	286	98,641	36,272	47	27.7
2005	288	100,254	39,118	51	28.0
2006	290	105,193	41,054	49	28.5
2007	261	100,242	37,881	52	25.7
2008	280	100,146	37,552	49	27.5
2009	384	118,187	42,682	42	37.9
2010	385	129,009	46,428	45	38.1
2011	377	133,478	46,832	46	37.8
2012	351	135,261	46,294	46	35.0
2013	332	131,251	44,952	49	33.3
2014	317	125,562	43,933	49	31.9
2015	321	119,994	41,828	49	32.6
2016	312	100,996	37,387	46	31.9
2017	321	102,858	37,955	47	33.1
2018	337	102,616	36,991	44	34.7
2019	277	97,920	34,797	47	28.5
2020	258	88,491	30,767	45	25.7

County: county value. Kansas: state value. County Rank: highest county value ranked #1. (\$000): thousands of dollars. Nonmetro Kansas: Kansas total less Metropolitan Areas as defined by the Office of Management and Budget (OMB; released 3/6/2020). Per 1000: For nonmoney amounts, Per 1000=(county value / county population for the same year as the data) x 1000. \$ Per capita=(county value / county population for the same year as the data). Value= . indicates missing or suppressed data or value not calculated.

Social Environment



ESTIMATED PERCENT UNDER 18 IN POVERTY

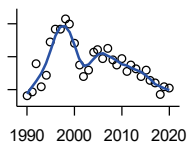
U.S. Census Bureau, Small Area Income and Poverty Estimates

Year	County	State of Kansas	Non Metro Kansas	County Rank	Per 1000 or \$ Per Capita
2000	12.8	11.9	.	72	.
2001	13.8	12.7	.	68	.
2002	12.2	12.1	.	68	.
2003	13.2	13.8	.	73	.
2004	13.0	14.6	.	79	.
2005	13.4	15.2	.	84	.
2006	13.1	15.4	.	87	.
2007	12.6	14.7	.	86	.
2008	13.7	14.6	.	81	.
2009	16.6	17.1	.	66	.
2010	16.9	18.1	.	66	.
2011	17.0	18.8	.	69	.
2012	15.8	19.0	.	77	.
2013	14.7	18.4	.	82	.
2014	13.9	17.6	.	87	.
2015	14.1	16.9	.	81	.
2016	13.7	14.3	.	80	.
2017	14.1	14.7	.	80	.
2018	14.8	14.8	.	78	.
2019	12.1	14.3	.	90	.
2020	11.4	13.0	.	87	.

County: county value. Kansas: state value. County Rank: highest county value ranked #1. (\$000): thousands of dollars. Nonmetro Kansas: Kansas total less Metropolitan Areas as defined by the Office of Management and Budget (OMB; released 3/6/2020). Per 1000: For nonmoney amounts, Per 1000=(county value / county population for the same year as the data) x 1000. \$ Per capita=(county value / county population for the same year as the data). Value= . indicates missing or suppressed data or value not calculated.

Business

ESTABLISHMENTS TOTAL COUNTY BUSINESS PATTERNS



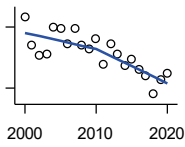
U.S. Census Bureau, County Business Patterns. Beginning with the 2017 data, any tabulation with fewer than 3 establishments were omitted from the release. Data for these establishments are included in the broader total.

Year	County	State of Kansas	Non Metro Kansas	County Rank	Per 1000 or \$ Per Capita
1990	356	65,858	26,802	34	30.4
1991	359	65,941	26,750	34	31.2
1992	376	67,630	27,229	32	33.0
1993	362	68,930	27,655	36	32.0
1994	369	69,822	27,763	34	32.8
1995	389	70,894	28,111	34	34.4
1996	397	72,017	28,353	33	35.2
1997	397	73,924	28,884	34	35.6
1998	403	74,019	28,749	32	36.5
1999	400	74,486	28,536	33	36.3
2000	388	74,939	28,475	35	35.4
2001	375	74,565	28,282	36	34.8
2002	368	75,077	28,183	36	34.8
2003	372	74,972	27,998	36	35.6
2004	383	75,827	28,009	35	37.1
2005	384	76,173	27,830	34	37.4
2006	379	76,446	27,653	35	37.3
2007	385	77,157	27,736	34	37.9
2008	378	76,096	27,314	35	37.2
2009	375	74,698	26,839	34	37.1
2010	379	74,301	26,739	30	37.5
2011	371	73,598	26,555	32	37.2
2012	375	73,944	26,534	32	37.4
2013	373	73,816	26,393	32	37.4
2014	368	74,055	26,292	33	37.0
2015	372	74,526	26,355	33	37.8
2016	366	74,884	26,172	33	37.4
2017	364	74,947	26,093	33	37.6
2018	357	74,559	25,802	35	36.7
2019	362	74,292	25,536	34	37.3
2020	361	73,982	25,178	31	36.0

County: county value. Kansas: state value. County Rank: highest county value ranked #1. (\$000): thousands of dollars. Nonmetro Kansas: Kansas total less Metropolitan Areas as defined by the Office of Management and Budget (OMB; released 3/6/2020). Per 1000: For nonmoney amounts, Per 1000=(county value / county population for the same year as the data) x 1000. \$ Per capita=(county value / county population for the same year as the data). Value= . indicates missing or suppressed data or value not calculated.

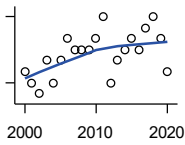
Business

**ESTABLISHMENTS: 1-19
EMPLOYEES**



U.S. Census Bureau, County Business Patterns. Beginning with the 2017 data, any tabulation with fewer than 3 establishments were omitted from the release. Data for these establishments are included in the broader total.

Year	County	State of Kansas	Non Metro Kansas	County Rank	Per 1000 or \$ Per Capita
2000	355	64,527	25,381	33	32.4
2001	341	64,176	25,248	36	31.6
2002	336	64,886	25,208	35	31.7
2003	337	64,714	25,020	36	32.2
2004	350	65,554	24,995	32	33.9
2005	349	65,796	24,839	31	34.0
2006	342	65,764	24,589	33	33.6
2007	349	66,446	24,701	32	34.4
2008	341	65,322	24,257	33	33.5
2009	339	64,128	23,851	33	33.5
2010	344	64,015	23,857	30	34.0
2011	332	63,251	23,571	32	33.3
2012	342	63,519	23,575	31	34.1
2013	337	63,197	23,396	32	33.8
2014	331	63,113	23,229	32	33.3
2015	334	63,280	23,227	32	33.9
2016	329	63,630	23,117	33	33.6
2017	326	63,619	23,022	33	33.7
2018	317	63,233	22,745	32	32.6
2019	324	62,904	22,489	32	33.4
2020	327	62,634	22,173	30	32.6



**ESTABLISHMENTS: 20-99
EMPLOYEES**

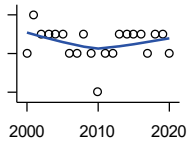
U.S. Census Bureau, County Business Patterns. Beginning with the 2017 data, any tabulation with fewer than 3 establishments were omitted from the release. Data for these establishments are included in the broader total.

Year	County	State of Kansas	Non Metro Kansas	County Rank	Per 1000 or \$ Per Capita
2000	29	8,714	2,653	39	2.6
2001	28	8,692	2,593	39	2.6
2002	27	8,582	2,554	39	2.6
2003	30	8,642	2,568	36	2.9
2004	28	8,658	2,590	39	2.7
2005	30	8,685	2,553	37	2.9
2006	32	8,922	2,612	35	3.1
2007	31	8,938	2,574	38	3.1
2008	31	8,939	2,587	38	3.0
2009	31	8,848	2,551	35	3.1
2010	32	8,612	2,454	34	3.2
2011	34	8,668	2,540	32	3.4
2012	28	8,700	2,500	37	2.8
2013	30	8,870	2,541	37	3.0
2014	31	9,121	2,590	35	3.1
2015	32	9,374	2,664	36	3.3
2016	31	9,412	2,596	36	3.2
2017	33	9,487	2,638	35	3.4
2018	34	9,485	2,621	35	3.5
2019	32	9,485	2,591	36	3.3
2020	29	9,471	2,545	36	2.9

County: county value. Kansas: state value. County Rank: highest county value ranked #1. (\$000): thousands of dollars. Nonmetro Kansas: Kansas total less Metropolitan Areas as defined by the Office of Management and Budget (OMB; released 3/6/2020). Per 1000: For nonmoney amounts, Per 1000=(county value / county population for the same year as the data) x 1000. \$ Per capita=(county value / county population for the same year as the data). Value= . indicates missing or suppressed data or value not calculated.

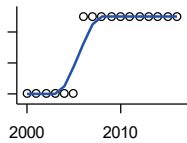
Business

ESTABLISHMENTS: 100-499 EMPLOYEES



U.S. Census Bureau, County Business Patterns. Beginning with the 2017 data, any tabulation with fewer than 3 establishments were omitted from the release. Data for these establishments are included in the broader total.

Year	County	State of Kansas	Non Metro Kansas	County Rank	Per 1000 or \$ Per Capita
2000	4	1,555	409	40	0.4
2001	6	1,555	406	35	0.6
2002	5	1,464	386	35	0.5
2003	5	1,470	378	36	0.5
2004	5	1,463	388	35	0.5
2005	5	1,537	400	37	0.5
2006	4	1,598	407	42	0.4
2007	4	1,602	416	39	0.4
2008	5	1,653	421	36	0.5
2009	4	1,551	394	40	0.4
2010	2	1,513	382	58	0.2
2011	4	1,523	395	40	0.4
2012	4	1,567	410	41	0.4
2013	5	1,581	407	36	0.5
2014	5	1,641	421	36	0.5
2015	5	1,693	414	37	0.5
2016	5	1,671	406	37	0.5
2017	4	1,653	.	36	0.4
2018	5	1,650	.	32	0.5
2019	5	1,718	.	33	0.5
2020	4	1,692	.	36	0.4



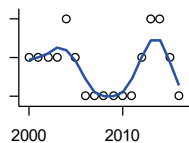
ESTABLISHMENTS: 500 OR MORE EMPLOYEES

U.S. Census Bureau, County Business Patterns. Beginning with the 2017 data, any tabulation with fewer than 3 establishments were omitted from the release. Data for these establishments are included in the broader total.

Year	County	State of Kansas	Non Metro Kansas	County Rank	Per 1000 or \$ Per Capita
2000	0	143	32	105	0.0
2001	0	142	35	105	0.0
2002	0	145	35	105	0.0
2003	0	146	32	105	0.0
2004	0	152	36	105	0.0
2005	0	155	38	105	0.0
2006	1	162	45	31	0.1
2007	1	171	45	32	0.1
2008	1	182	49	33	0.1
2009	1	171	43	33	0.1
2010	1	161	46	33	0.1
2011	1	156	49	33	0.1
2012	1	158	49	34	0.1
2013	1	168	49	33	0.1
2014	1	180	52	34	0.1
2015	1	179	50	33	0.1
2016	1	171	53	33	0.1

County: county value. Kansas: state value. County Rank: highest county value ranked #1. (\$000): thousands of dollars. Nonmetro Kansas: Kansas total less Metropolitan Areas as defined by the Office of Management and Budget (OMB; released 3/6/2020). Per 1000: For nonmoney amounts, Per 1000=(county value / county population for the same year as the data) x 1000. \$ Per capita=(county value / county population for the same year as the data). Value= . indicates missing or suppressed data or value not calculated.

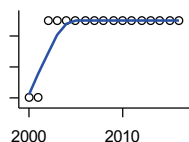
Business



ESTABLISHMENTS: FORESTRY, FISHING, HUNTING, AND AG SUPPORT

U.S. Census Bureau, County Business Patterns. Beginning with the 2017 data, any tabulation with fewer than 3 establishments were omitted from the release. Data for these establishments are included in the broader total.

Year	County	State of Kansas	Non Metro Kansas	County Rank	Per 1000 or \$ Per Capita
2000	1	190	149	74	0.1
2001	1	217	168	80	0.1
2002	1	224	176	84	0.1
2003	1	217	173	84	0.1
2004	2	211	165	53	0.2
2005	1	188	148	76	0.1
2006	0	193	158	105	0.0
2007	0	212	170	105	0.0
2008	0	197	158	105	0.0
2009	0	191	154	105	0.0
2010	0	192	161	105	0.0
2011	0	193	157	105	0.0
2012	1	204	164	85	0.1
2013	2	208	166	54	0.2
2014	2	194	152	55	0.2
2015	1	192	149	81	0.1
2016	0	181	142	105	0.0



ESTABLISHMENTS: MINING

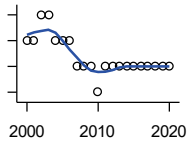
U.S. Census Bureau, County Business Patterns. Beginning with the 2017 data, any tabulation with fewer than 3 establishments were omitted from the release. Data for these establishments are included in the broader total.

Year	County	State of Kansas	Non Metro Kansas	County Rank	Per 1000 or \$ Per Capita
2000	0	868	619	105	0.0
2001	0	878	622	105	0.0
2002	1	847	615	89	0.1
2003	1	864	633	88	0.1
2004	1	880	647	87	0.1
2005	1	941	695	88	0.1
2006	1	991	734	88	0.1
2007	1	1,000	759	88	0.1
2008	1	1,047	799	90	0.1
2009	1	1,016	772	90	0.1
2010	1	1,009	762	91	0.1
2011	1	1,013	763	92	0.1
2012	1	1,048	789	91	0.1
2013	1	1,060	802	92	0.1
2014	1	1,102	828	93	0.1
2015	1	1,069	810	94	0.1
2016	1	990	747	93	0.1

County: county value. Kansas: state value. County Rank: highest county value ranked #1. (\$000): thousands of dollars. Nonmetro Kansas: Kansas total less Metropolitan Areas as defined by the Office of Management and Budget (OMB; released 3/6/2020). Per 1000: For nonmoney amounts, Per 1000=(county value / county population for the same year as the data) x 1000. \$ Per capita=(county value / county population for the same year as the data). Value= . indicates missing or suppressed data or value not calculated.

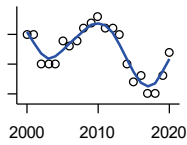
Business

ESTABLISHMENTS: UTILITIES



U.S. Census Bureau, County Business Patterns. Beginning with the 2017 data, any tabulation with fewer than 3 establishments were omitted from the release. Data for these establishments are included in the broader total.

Year	County	State of Kansas	Non Metro Kansas	County Rank	Per 1000 or \$ Per Capita
2000	4	274	192	24	0.4
2001	4	290	204	27	0.4
2002	5	278	195	19	0.5
2003	5	268	180	14	0.5
2004	4	247	164	19	0.4
2005	4	254	172	20	0.4
2006	4	248	169	19	0.4
2007	3	222	156	33	0.3
2008	3	244	166	35	0.3
2009	3	222	152	32	0.3
2010	2	197	129	49	0.2
2011	3	230	156	31	0.3
2012	3	232	156	30	0.3
2013	3	234	159	29	0.3
2014	3	232	160	28	0.3
2015	3	237	165	30	0.3
2016	3	245	171	28	0.3
2017	3	246	.	29	0.3
2018	3	252	.	30	0.3
2019	3	256	.	31	0.3
2020	3	255	.	33	0.3



ESTABLISHMENTS: CONSTRUCTION

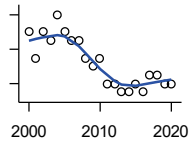
U.S. Census Bureau, County Business Patterns. Beginning with the 2017 data, any tabulation with fewer than 3 establishments were omitted from the release. Data for these establishments are included in the broader total.

Year	County	State of Kansas	Non Metro Kansas	County Rank	Per 1000 or \$ Per Capita
2000	35	7,703	2,616	36	3.2
2001	35	7,449	2,520	36	3.2
2002	30	7,519	2,482	43	2.8
2003	30	7,722	2,521	43	2.9
2004	30	7,887	2,518	43	2.9
2005	34	8,032	2,515	37	3.3
2006	33	8,031	2,494	41	3.2
2007	34	8,057	2,547	38	3.3
2008	36	7,831	2,522	38	3.5
2009	37	7,342	2,452	36	3.7
2010	38	7,064	2,394	32	3.8
2011	36	6,774	2,361	31	3.6
2012	36	6,741	2,393	32	3.6
2013	35	6,802	2,394	33	3.5
2014	30	6,920	2,383	39	3.0
2015	27	7,014	2,377	42	2.7
2016	28	6,988	2,343	39	2.9
2017	25	7,031	2,316	46	2.6
2018	25	7,124	2,285	47	2.6
2019	28	7,060	2,242	40	2.9
2020	32	7,089	2,249	36	3.2

County: county value. Kansas: state value. County Rank: highest county value ranked #1. (\$000): thousands of dollars. Nonmetro Kansas: Kansas total less Metropolitan Areas as defined by the Office of Management and Budget (OMB; released 3/6/2020). Per 1000: For nonmoney amounts, Per 1000=(county value / county population for the same year as the data) x 1000. \$ Per capita=(county value / county population for the same year as the data). Value= . indicates missing or suppressed data or value not calculated.

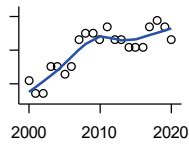
Business

**ESTABLISHMENTS:
MANUFACTURING**



U.S. Census Bureau, County Business Patterns. Beginning with the 2017 data, any tabulation with fewer than 3 establishments were omitted from the release. Data for these establishments are included in the broader total.

Year	County	State of Kansas	Non Metro Kansas	County Rank	Per 1000 or \$ Per Capita
2000	22	3,229	1,316	35	2.0
2001	19	3,240	1,323	35	1.8
2002	22	3,181	1,289	35	2.1
2003	21	3,159	1,291	34	2.0
2004	24	3,179	1,313	32	2.3
2005	22	3,128	1,278	34	2.1
2006	21	3,165	1,290	35	2.1
2007	21	3,184	1,316	35	2.1
2008	19	3,171	1,297	36	1.9
2009	18	3,026	1,240	37	1.8
2010	19	2,955	1,222	35	1.9
2011	16	2,877	1,193	37	1.6
2012	16	2,889	1,197	36	1.6
2013	15	2,836	1,165	37	1.5
2014	15	2,831	1,168	37	1.5
2015	16	2,817	1,161	37	1.6
2016	15	2,791	1,150	37	1.5
2017	17	2,760	1,147	36	1.8
2018	17	2,725	1,126	36	1.7
2019	16	2,695	1,111	37	1.6
2020	16	2,673	1,103	37	1.6



**ESTABLISHMENTS: WHOLESALE
TRADE**

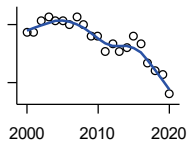
U.S. Census Bureau, County Business Patterns. Beginning with the 2017 data, any tabulation with fewer than 3 establishments were omitted from the release. Data for these establishments are included in the broader total.

Year	County	State of Kansas	Non Metro Kansas	County Rank	Per 1000 or \$ Per Capita
2000	18	4,876	1,776	50	1.6
2001	16	4,811	1,769	54	1.5
2002	16	4,719	1,750	55	1.5
2003	20	4,590	1,637	41	1.9
2004	20	4,553	1,634	37	1.9
2005	19	4,541	1,618	41	1.9
2006	20	4,517	1,596	37	2.0
2007	24	4,555	1,629	29	2.4
2008	25	4,501	1,622	27	2.5
2009	25	4,437	1,614	25	2.5
2010	24	4,432	1,612	27	2.4
2011	26	4,400	1,660	25	2.6
2012	24	4,563	1,755	31	2.4
2013	24	4,501	1,741	31	2.4
2014	23	4,497	1,746	33	2.3
2015	23	4,459	1,755	36	2.3
2016	23	4,457	1,732	34	2.3
2017	26	4,436	1,774	24	2.7
2018	27	4,330	1,727	24	2.8
2019	26	4,291	1,713	24	2.7
2020	24	4,191	1,677	25	2.4

County: county value. Kansas: state value. County Rank: highest county value ranked #1. (\$000): thousands of dollars. Nonmetro Kansas: Kansas total less Metropolitan Areas as defined by the Office of Management and Budget (OMB; released 3/6/2020). Per 1000: For nonmoney amounts, Per 1000=(county value / county population for the same year as the data) x 1000. \$ Per capita=(county value / county population for the same year as the data). Value= . indicates missing or suppressed data or value not calculated.

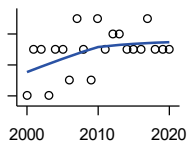
Business

ESTABLISHMENTS: RETAIL TRADE



U.S. Census Bureau, County Business Patterns. Beginning with the 2017 data, any tabulation with fewer than 3 establishments were omitted from the release. Data for these establishments are included in the broader total.

Year	County	State of Kansas	Non Metro Kansas	County Rank	Per 1000 or \$ Per Capita
2000	73	12,261	5,240	36	6.7
2001	73	12,206	5,207	34	6.8
2002	76	11,980	5,082	32	7.2
2003	77	11,834	5,049	30	7.4
2004	76	11,748	4,967	32	7.4
2005	76	11,562	4,834	30	7.4
2006	75	11,367	4,702	29	7.4
2007	77	11,306	4,653	29	7.6
2008	75	10,978	4,494	29	7.4
2009	72	10,760	4,372	29	7.1
2010	72	10,727	4,346	30	7.1
2011	68	10,655	4,289	31	6.8
2012	70	10,585	4,202	30	7.0
2013	68	10,433	4,147	29	6.8
2014	69	10,391	4,070	29	6.9
2015	72	10,327	4,061	29	7.3
2016	70	10,197	3,965	28	7.2
2017	65	10,074	3,885	31	6.7
2018	63	9,866	3,797	31	6.5
2019	62	9,762	3,750	30	6.4
2020	57	9,591	3,666	32	5.7



ESTABLISHMENTS: TRANSPORTATION & WAREHOUSING

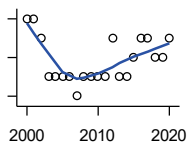
U.S. Census Bureau, County Business Patterns. Beginning with the 2017 data, any tabulation with fewer than 3 establishments were omitted from the release. Data for these establishments are included in the broader total.

Year	County	State of Kansas	Non Metro Kansas	County Rank	Per 1000 or \$ Per Capita
2000	23	2,474	1,293	25	2.1
2001	26	2,463	1,298	22	2.4
2002	26	2,461	1,278	22	2.5
2003	23	2,576	1,297	26	2.2
2004	26	2,651	1,324	23	2.5
2005	26	2,632	1,326	26	2.5
2006	24	2,626	1,295	26	2.4
2007	28	2,664	1,314	22	2.8
2008	26	2,675	1,329	27	2.6
2009	24	2,635	1,313	28	2.4
2010	28	2,615	1,313	23	2.8
2011	26	2,579	1,285	24	2.6
2012	27	2,519	1,243	24	2.7
2013	27	2,492	1,226	22	2.7
2014	26	2,518	1,240	24	2.6
2015	26	2,554	1,257	23	2.6
2016	26	2,567	1,241	22	2.7
2017	28	2,640	1,245	22	2.9
2018	26	2,627	1,238	23	2.7
2019	26	2,615	1,209	24	2.7
2020	26	2,589	1,179	22	2.6

County: county value. Kansas: state value. County Rank: highest county value ranked #1. (\$000): thousands of dollars. Nonmetro Kansas: Kansas total less Metropolitan Areas as defined by the Office of Management and Budget (OMB; released 3/6/2020). Per 1000: For nonmoney amounts, Per 1000=(county value / county population for the same year as the data) x 1000. \$ Per capita=(county value / county population for the same year as the data). Value= . indicates missing or suppressed data or value not calculated.

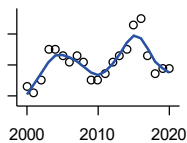
Business

ESTABLISHMENTS: INFORMATION



U.S. Census Bureau, County Business Patterns. Beginning with the 2017 data, any tabulation with fewer than 3 establishments were omitted from the release. Data for these establishments are included in the broader total.

Year	County	State of Kansas	Non Metro Kansas	County Rank	Per 1000 or \$ Per Capita
2000	10	1,542	578	32	0.9
2001	10	1,556	566	31	0.9
2002	9	1,517	551	33	0.9
2003	7	1,516	564	46	0.7
2004	7	1,518	556	41	0.7
2005	7	1,519	536	41	0.7
2006	7	1,549	559	40	0.7
2007	6	1,504	527	46	0.6
2008	7	1,468	522	40	0.7
2009	7	1,420	510	38	0.7
2010	7	1,437	527	41	0.7
2011	7	1,428	537	43	0.7
2012	9	1,387	515	30	0.9
2013	7	1,337	487	37	0.7
2014	7	1,335	496	39	0.7
2015	8	1,359	510	33	0.8
2016	9	1,431	537	31	0.9
2017	9	1,439	.	28	0.9
2018	8	1,407	.	34	0.8
2019	8	1,422	.	35	0.8
2020	9	1,424	.	28	0.9



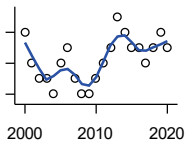
ESTABLISHMENTS: FINANCE & INSURANCE

U.S. Census Bureau, County Business Patterns. Beginning with the 2017 data, any tabulation with fewer than 3 establishments were omitted from the release. Data for these establishments are included in the broader total.

Year	County	State of Kansas	Non Metro Kansas	County Rank	Per 1000 or \$ Per Capita
2000	24	5,209	1,848	36	2.2
2001	23	5,178	1,828	38	2.1
2002	25	5,496	1,911	38	2.4
2003	30	5,569	1,907	29	2.9
2004	30	5,572	1,913	29	2.9
2005	29	5,708	1,964	29	2.8
2006	28	5,877	1,976	31	2.8
2007	29	6,017	2,030	32	2.9
2008	28	6,010	2,023	33	2.8
2009	25	5,933	1,994	36	2.5
2010	25	5,872	1,975	37	2.5
2011	26	5,854	1,985	34	2.6
2012	28	5,993	2,024	33	2.8
2013	29	5,903	1,993	31	2.9
2014	30	5,894	2,000	29	3.0
2015	34	5,932	1,998	25	3.5
2016	35	6,022	2,021	25	3.6
2017	29	6,026	2,007	31	3.0
2018	26	6,023	1,997	33	2.7
2019	27	5,953	1,977	32	2.8
2020	27	5,926	1,969	32	2.7

County: county value. Kansas: state value. County Rank: highest county value ranked #1. (\$000): thousands of dollars. Nonmetro Kansas: Kansas total less Metropolitan Areas as defined by the Office of Management and Budget (OMB; released 3/6/2020). Per 1000: For nonmoney amounts, Per 1000=(county value / county population for the same year as the data) x 1000. \$ Per capita=(county value / county population for the same year as the data). Value= . indicates missing or suppressed data or value not calculated.

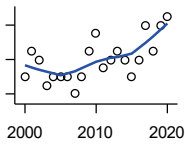
Business



ESTABLISHMENTS: REAL ESTATE, RENTAL, AND LEASING

U.S. Census Bureau, County Business Patterns. Beginning with the 2017 data, any tabulation with fewer than 3 establishments were omitted from the release. Data for these establishments are included in the broader total.

Year	County	State of Kansas	Non Metro Kansas	County Rank	Per 1000 or \$ Per Capita
2000	7	2,733	687	42	0.6
2001	5	2,849	724	51	0.5
2002	4	2,952	735	55	0.4
2003	4	3,007	727	56	0.4
2004	3	3,108	713	62	0.3
2005	5	3,203	727	52	0.5
2006	6	3,268	736	46	0.6
2007	4	3,286	721	54	0.4
2008	3	3,239	738	61	0.3
2009	3	3,122	723	58	0.3
2010	4	3,050	708	51	0.4
2011	5	3,002	692	44	0.5
2012	6	2,981	691	42	0.6
2013	8	3,046	717	37	0.8
2014	7	3,135	738	38	0.7
2015	6	3,179	744	42	0.6
2016	6	3,293	757	43	0.6
2017	5	3,389	.	50	0.5
2018	6	3,409	.	42	0.6
2019	7	3,464	.	41	0.7
2020	6	3,500	.	45	0.6



ESTABLISHMENTS: PROFESSIONAL, SCIENTIFIC, AND TECHNICAL SERVICES

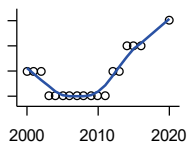
U.S. Census Bureau, County Business Patterns. Beginning with the 2017 data, any tabulation with fewer than 3 establishments were omitted from the release. Data for these establishments are included in the broader total.

Year	County	State of Kansas	Non Metro Kansas	County Rank	Per 1000 or \$ Per Capita
2000	20	6,424	1,690	37	1.8
2001	23	6,492	1,665	34	2.1
2002	22	6,719	1,704	38	2.1
2003	19	6,793	1,735	40	1.8
2004	20	7,025	1,730	39	1.9
2005	20	7,087	1,711	38	1.9
2006	20	7,231	1,736	39	2.0
2007	18	7,329	1,729	43	1.8
2008	20	7,133	1,671	38	2.0
2009	23	7,122	1,676	37	2.3
2010	25	7,172	1,680	37	2.5
2011	21	7,115	1,668	38	2.1
2012	22	7,122	1,681	37	2.2
2013	23	7,129	1,698	36	2.3
2014	22	7,206	1,682	36	2.2
2015	20	7,184	1,687	38	2.0
2016	22	7,146	1,659	37	2.2
2017	26	7,224	1,679	32	2.7
2018	23	7,138	1,655	36	2.4
2019	26	7,119	.	33	2.7
2020	27	7,117	.	32	2.7

County: county value. Kansas: state value. County Rank: highest county value ranked #1. (\$000): thousands of dollars. Nonmetro Kansas: Kansas total less Metropolitan Areas as defined by the Office of Management and Budget (OMB; released 3/6/2020). Per 1000: For nonmoney amounts, Per 1000=(county value / county population for the same year as the data) x 1000. \$ Per capita=(county value / county population for the same year as the data). Value= . indicates missing or suppressed data or value not calculated.

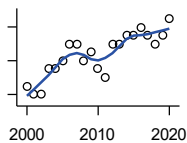
Business

ESTABLISHMENTS: MANAGEMENT OF COMPANIES AND ENTERPRISES



U.S. Census Bureau, County Business Patterns. Beginning with the 2017 data, any tabulation with fewer than 3 establishments were omitted from the release. Data for these establishments are included in the broader total.

Year	County	State of Kansas	Non Metro Kansas	County Rank	Per 1000 or \$ Per Capita
2000	1	622	145	68	0.1
2001	1	593	141	62	0.1
2002	1	597	152	63	0.1
2003	0	561	135	105	0.0
2004	0	569	133	105	0.0
2005	0	543	127	105	0.0
2006	0	542	131	105	0.0
2007	0	550	133	105	0.0
2008	0	553	139	105	0.0
2009	0	575	136	105	0.0
2010	0	567	131	105	0.0
2011	0	552	134	105	0.0
2012	1	593	135	56	0.1
2013	1	590	135	57	0.1
2014	2	603	136	38	0.2
2015	2	613	140	39	0.2
2016	2	655	171	39	0.2
2020	3	627	.	27	0.3



ESTABLISHMENTS: ADMIN, SUPPORT, WASTE MGMT., AND REMEDIATION

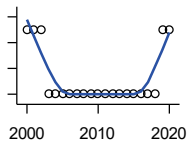
U.S. Census Bureau, County Business Patterns. Beginning with the 2017 data, any tabulation with fewer than 3 establishments were omitted from the release. Data for these establishments are included in the broader total.

Year	County	State of Kansas	Non Metro Kansas	County Rank	Per 1000 or \$ Per Capita
2000	9	3,307	871	40	0.8
2001	8	3,421	913	49	0.7
2002	8	3,232	882	47	0.8
2003	11	3,189	858	35	1.1
2004	11	3,301	891	36	1.1
2005	12	3,342	896	33	1.2
2006	14	3,395	886	30	1.4
2007	14	3,522	921	31	1.4
2008	12	3,587	932	33	1.2
2009	13	3,505	904	31	1.3
2010	11	3,494	897	34	1.1
2011	10	3,447	903	37	1.0
2012	14	3,462	891	29	1.4
2013	14	3,489	904	29	1.4
2014	15	3,569	933	28	1.5
2015	15	3,630	964	27	1.5
2016	16	3,705	987	27	1.6
2017	15	3,741	991	29	1.5
2018	14	3,740	983	32	1.4
2019	15	3,762	991	30	1.5
2020	17	3,807	989	27	1.7

County: county value. Kansas: state value. County Rank: highest county value ranked #1. (\$000): thousands of dollars. Nonmetro Kansas: Kansas total less Metropolitan Areas as defined by the Office of Management and Budget (OMB; released 3/6/2020). Per 1000: For nonmoney amounts, Per 1000=(county value / county population for the same year as the data) x 1000. \$ Per capita=(county value / county population for the same year as the data). Value= . indicates missing or suppressed data or value not calculated.

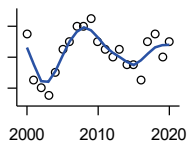
Business

ESTABLISHMENTS: EDUCATIONAL SERVICES



U.S. Census Bureau, County Business Patterns. Beginning with the 2017 data, any tabulation with fewer than 3 establishments were omitted from the release. Data for these establishments are included in the broader total.

Year	County	State of Kansas	Non Metro Kansas	County Rank	Per 1000 or \$ Per Capita
2000	4	604	155	25	0.4
2001	4	625	168	28	0.4
2002	4	666	165	26	0.4
2003	3	663	173	35	0.3
2004	3	690	173	35	0.3
2005	3	699	168	35	0.3
2006	3	698	175	34	0.3
2007	3	691	165	35	0.3
2008	3	692	158	36	0.3
2009	3	690	150	35	0.3
2010	3	700	149	35	0.3
2011	3	711	150	35	0.3
2012	3	724	145	33	0.3
2013	3	735	153	33	0.3
2014	3	722	152	32	0.3
2015	3	754	152	33	0.3
2016	3	728	150	31	0.3
2017	3	720	.	30	0.3
2018	3	744	.	31	0.3
2019	4	759	.	27	0.4
2020	4	736	.	27	0.4



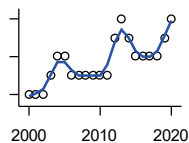
ESTABLISHMENTS: HEALTH CARE AND SOCIAL ASSISTANCE

U.S. Census Bureau, County Business Patterns. Beginning with the 2017 data, any tabulation with fewer than 3 establishments were omitted from the release. Data for these establishments are included in the broader total.

Year	County	State of Kansas	Non Metro Kansas	County Rank	Per 1000 or \$ Per Capita
2000	37	6,564	2,591	36	3.4
2001	31	6,636	2,590	39	2.9
2002	30	7,052	2,777	41	2.8
2003	29	7,129	2,792	43	2.8
2004	32	7,239	2,813	38	3.1
2005	35	7,412	2,855	38	3.4
2006	36	7,477	2,860	36	3.5
2007	38	7,661	2,864	34	3.7
2008	38	7,651	2,810	36	3.7
2009	39	7,696	2,787	36	3.9
2010	36	7,751	2,830	40	3.6
2011	35	7,804	2,817	40	3.5
2012	34	7,973	2,793	40	3.4
2013	35	7,877	2,729	37	3.5
2014	33	7,809	2,686	39	3.3
2015	33	8,103	2,692	38	3.4
2016	31	8,315	2,678	41	3.2
2017	36	8,136	2,646	35	3.7
2018	37	8,126	2,632	34	3.8
2019	34	8,184	2,587	36	3.5
2020	36	8,290	2,571	33	3.6

County: county value. Kansas: state value. County Rank: highest county value ranked #1. (\$000): thousands of dollars. Nonmetro Kansas: Kansas total less Metropolitan Areas as defined by the Office of Management and Budget (OMB; released 3/6/2020). Per 1000: For nonmoney amounts, Per 1000=(county value / county population for the same year as the data) x 1000. \$ Per capita=(county value / county population for the same year as the data). Value= . indicates missing or suppressed data or value not calculated.

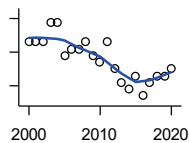
Business



ESTABLISHMENTS: ARTS, ENTERTAINMENT, AND RECREATION

U.S. Census Bureau, County Business Patterns. Beginning with the 2017 data, any tabulation with fewer than 3 establishments were omitted from the release. Data for these establishments are included in the broader total.

Year	County	State of Kansas	Non Metro Kansas	County Rank	Per 1000 or \$ Per Capita
2000	3	981	419	69	0.3
2001	3	1,009	433	71	0.3
2002	3	1,054	441	70	0.3
2003	4	1,045	443	55	0.4
2004	5	1,082	445	45	0.5
2005	5	1,109	446	45	0.5
2006	4	1,080	445	58	0.4
2007	4	1,092	444	57	0.4
2008	4	1,062	423	56	0.4
2009	4	1,063	421	56	0.4
2010	4	1,018	406	55	0.4
2011	4	997	387	49	0.4
2012	6	1,000	388	37	0.6
2013	7	1,009	377	31	0.7
2014	6	1,030	365	34	0.6
2015	5	1,031	357	42	0.5
2016	5	1,060	366	42	0.5
2017	5	1,096	.	40	0.5
2018	5	1,088	.	39	0.5
2019	6	1,087	.	34	0.6
2020	7	1,064	.	34	0.7



ESTABLISHMENTS: ACCOMMODATION AND FOOD SERVICES

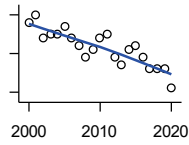
U.S. Census Bureau, County Business Patterns. Beginning with the 2017 data, any tabulation with fewer than 3 establishments were omitted from the release. Data for these establishments are included in the broader total.

Year	County	State of Kansas	Non Metro Kansas	County Rank	Per 1000 or \$ Per Capita
2000	29	5,536	2,213	39	2.6
2001	29	5,551	2,173	37	2.7
2002	29	5,610	2,174	36	2.7
2003	32	5,635	2,188	35	3.1
2004	32	5,681	2,160	34	3.1
2005	27	5,776	2,170	37	2.6
2006	28	5,745	2,132	35	2.8
2007	28	5,877	2,095	34	2.8
2008	29	5,843	2,052	33	2.9
2009	27	5,794	2,029	35	2.7
2010	26	5,898	2,046	36	2.6
2011	29	5,958	2,067	33	2.9
2012	25	5,951	2,046	38	2.5
2013	23	6,061	2,070	40	2.3
2014	22	5,985	2,024	41	2.2
2015	24	6,034	2,063	38	2.4
2016	21	6,126	2,094	43	2.1
2017	23	6,250	2,123	41	2.4
2018	24	6,256	2,128	40	2.5
2019	24	6,231	2,131	39	2.5
2020	25	6,206	2,131	39	2.5

County: county value. Kansas: state value. County Rank: highest county value ranked #1. (\$000): thousands of dollars. Nonmetro Kansas: Kansas total less Metropolitan Areas as defined by the Office of Management and Budget (OMB; released 3/6/2020). Per 1000: For nonmoney amounts, Per 1000=(county value / county population for the same year as the data) x 1000. \$ Per capita=(county value / county population for the same year as the data). Value= . indicates missing or suppressed data or value not calculated.

Business

ESTABLISHMENTS: OTHER SERVICES

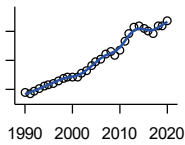


U.S. Census Bureau, County Business Patterns. Beginning with the 2017 data, any tabulation with fewer than 3 establishments were omitted from the release. Data for these establishments are included in the broader total.

Year	County	State of Kansas	Non Metro Kansas	County Rank	Per 1000 or \$ Per Capita
2000	58	8,423	3,636	29	5.3
2001	60	8,310	3,614	28	5.6
2002	54	8,552	3,658	32	5.1
2003	55	8,411	3,605	32	5.3
2004	55	8,343	3,597	32	5.3
2005	57	8,321	3,571	31	5.6
2006	54	8,225	3,490	32	5.3
2007	52	8,355	3,534	33	5.1
2008	49	8,104	3,406	35	4.8
2009	51	8,040	3,405	34	5.0
2010	54	7,998	3,379	31	5.3
2011	55	7,883	3,294	30	5.5
2012	49	7,913	3,303	33	4.9
2013	47	7,947	3,290	34	4.7
2014	51	7,943	3,285	30	5.1
2015	52	7,869	3,255	31	5.3
2016	49	7,839	3,204	33	5.0
2017	46	7,873	3,189	35	4.7
2018	46	7,853	3,176	35	4.7
2019	46	7,834	3,138	32	4.7
2020	41	7,787	3,073	36	4.1

County: county value. Kansas: state value. County Rank: highest county value ranked #1. (\$000): thousands of dollars. Nonmetro Kansas: Kansas total less Metropolitan Areas as defined by the Office of Management and Budget (OMB; released 3/6/2020). Per 1000: For nonmoney amounts, Per 1000=(county value / county population for the same year as the data) x 1000. \$ Per capita=(county value / county population for the same year as the data). Value= . indicates missing or suppressed data or value not calculated.

Business



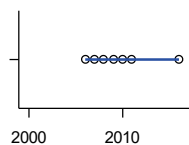
**TOTAL ANNUAL PAYROLL (\$000)
COUNTY BUSINESS PATTERNS**

U.S. Census Bureau, County Business Patterns. Beginning with the 2017 data, any tabulation with fewer than 3 establishments were omitted from the release. Data for these establishments are included in the broader total.

Year	County	State of Kansas	Non Metro Kansas	County Rank	Per 1000 or \$ Per Capita
1990	43,661	17,487,316	4,442,429	36	3,730.1
1991	42,190	18,162,326	4,612,616	38	3,661.1
1992	47,576	19,244,346	4,882,060	37	4,177.4
1993	51,587	20,087,190	5,182,780	37	4,553.1
1994	55,542	21,201,652	5,541,423	37	4,934.0
1995	57,983	22,825,920	5,875,310	37	5,125.8
1996	61,102	24,613,884	6,198,398	36	5,418.8
1997	65,636	26,787,098	6,599,061	37	5,878.2
1998	69,908	28,747,576	6,871,794	36	6,335.7
1999	71,766	30,600,434	7,121,961	36	6,521.2
2000	71,105	31,990,762	7,520,424	37	6,484.7
2001	72,234	33,303,992	7,598,165	37	6,693.9
2002	76,697	33,152,962	7,572,002	37	7,245.8
2003	81,522	34,040,944	7,726,561	37	7,800.4
2004	91,183	35,725,812	8,303,779	37	8,842.4
2005	97,502	36,646,064	8,586,986	37	9,493.9
2006	102,438	39,251,388	9,178,947	37	10,071.6
2007	111,862	42,022,753	.	36	11,020.9
2008	115,851	43,984,689	.	35	11,387.0
2009	108,171	42,146,866	.	36	10,687.8
2010	118,390	42,686,303	10,294,015	35	11,702.1
2011	133,480	43,733,944	.	32	13,370.7
2012	146,420	45,608,072	11,222,183	32	14,604.0
2013	157,022	47,715,601	11,446,751	31	15,744.7
2014	158,315	49,712,832	11,957,931	31	15,919.1
2015	153,955	51,259,676	11,975,718	34	15,637.9
2016	150,367	51,016,318	12,148,646	35	15,360.8
2017	145,472	52,754,605	12,448,592	36	15,017.2
2018	158,766	55,087,460	12,810,270	35	16,342.4
2019	158,562	57,272,387	13,123,288	35	16,334.8
2020	168,776	58,374,388	14,007,955	33	16,813.7

County: county value. Kansas: state value. County Rank: highest county value ranked #1. (\$000): thousands of dollars. Nonmetro Kansas: Kansas total less Metropolitan Areas as defined by the Office of Management and Budget (OMB; released 3/6/2020). Per 1000: For nonmoney amounts, Per 1000=(county value / county population for the same year as the data) x 1000. \$ Per capita=(county value / county population for the same year as the data). Value= . indicates missing or suppressed data or value not calculated.

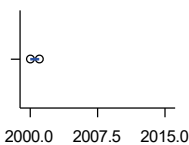
Business



**TOTAL ANNUAL PAYROLL(\$000):
FORESTRY, FISHING, HUNTING, AND
AG SUPPORT**

U.S. Census Bureau, County Business Patterns. Beginning with the 2017 data, any tabulation with fewer than 3 establishments were omitted from the release. Data for these establishments are included in the broader total.

Year	County	State of Kansas	Non Metro Kansas	County Rank	Per 1000 or \$ Per Capita
2000	.	13,551	.	.	.
2001
2002	.	16,528	.	.	.
2003	.	17,247	.	.	.
2004	.	17,552	.	.	.
2005	.	16,298	.	.	.
2006	0	17,908	.	.	0.0
2007	0	22,199	.	.	0.0
2008	0	21,359	.	.	0.0
2009	0	22,466	.	.	0.0
2010	0	22,753	.	.	0.0
2011	0	23,320	.	.	0.0
2012	.	27,492	.	.	.
2013	.	30,360	.	.	.
2014	.	34,862	.	.	.
2015	.	35,980	.	.	.
2016	0	31,488	.	.	0.0



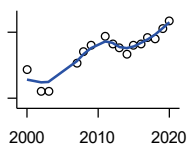
**TOTAL ANNUAL PAYROLL(\$000):
MINING**

U.S. Census Bureau, County Business Patterns. Beginning with the 2017 data, any tabulation with fewer than 3 establishments were omitted from the release. Data for these establishments are included in the broader total.

Year	County	State of Kansas	Non Metro Kansas	County Rank	Per 1000 or \$ Per Capita
2000	0	240,079	.	.	0.0
2001	0	273,838	.	.	0.0
2002	.	262,277	.	.	.
2003	.	290,652	.	.	.
2004	.	326,997	.	.	.
2005	.	381,069	.	.	.
2006	.	482,102	.	.	.
2007	.	551,751	.	.	.
2008	.	620,446	.	.	.
2009	.	465,070	.	.	.
2010	.	485,841	.	.	.
2011	.	541,536	.	.	.
2012	.	600,402	.	.	.
2013	.	599,788	.	.	.
2014	.	678,673	.	.	.
2015	.	552,658	.	.	.

County: county value. Kansas: state value. County Rank: highest county value ranked #1. (\$000): thousands of dollars. Nonmetro Kansas: Kansas total less Metropolitan Areas as defined by the Office of Management and Budget (OMB; released 3/6/2020). Per 1000: For nonmoney amounts, Per 1000=(county value / county population for the same year as the data) x 1000. \$ Per capita=(county value / county population for the same year as the data). Value= . indicates missing or suppressed data or value not calculated.

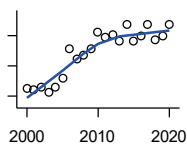
Business



**TOTAL ANNUAL PAYROLL(\$000):
UTILITIES**

U.S. Census Bureau, County Business Patterns. Beginning with the 2017 data, any tabulation with fewer than 3 establishments were omitted from the release. Data for these establishments are included in the broader total.

Year	County	State of Kansas	Non Metro Kansas	County Rank	Per 1000 or \$ Per Capita
2000	1,652	410,313	.	.	150.7
2001	.	452,057	.	.	.
2002	1,150	377,559	.	.	108.6
2003	1,151	378,157	.	.	110.1
2004	.	377,809	.	.	.
2005	.	429,864	.	.	.
2006	.	443,999	.	.	.
2007	1,799	480,068	.	.	177.2
2008	2,068	541,066	.	.	203.3
2009	2,194	563,373	.	.	216.8
2010	.	512,628	.	.	.
2011	2,401	653,229	.	.	240.5
2012	2,238	625,451	.	.	223.2
2013	2,146	625,347	.	.	215.2
2014	1,995	610,960	.	.	200.6
2015	2,212	668,559	.	.	224.7
2016	2,247	700,926	.	.	229.5
2017	2,388	705,199	.	.	246.5
2018	2,340	770,542	.	.	240.9
2019	2,583	733,878	.	.	266.1
2020	2,759	738,521	.	.	274.9



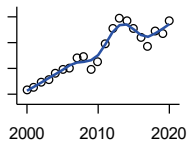
**TOTAL ANNUAL PAYROLL(\$000):
CONSTRUCTION**

U.S. Census Bureau, County Business Patterns. Beginning with the 2017 data, any tabulation with fewer than 3 establishments were omitted from the release. Data for these establishments are included in the broader total.

Year	County	State of Kansas	Non Metro Kansas	County Rank	Per 1000 or \$ Per Capita
2000	3,510	2,256,057	.	.	320.1
2001	3,402	2,320,652	.	.	315.3
2002	3,579	2,302,229	.	.	338.1
2003	3,293	2,282,021	.	.	315.1
2004	3,570	2,302,854	.	.	346.2
2005	4,188	2,465,977	.	.	407.8
2006	6,171	2,700,351	.	.	606.7
2007	5,453	2,772,168	.	.	537.2
2008	5,720	2,950,073	.	.	562.2
2009	6,115	2,709,864	.	.	604.2
2010	7,250	2,553,555	.	.	716.6
2011	6,916	2,550,355	.	.	692.8
2012	7,064	2,733,284	.	.	704.6
2013	6,635	2,866,801	.	.	665.3
2014	7,713	3,135,814	.	.	775.6
2015	6,653	3,270,952	.	.	675.8
2016	6,981	3,328,610	.	.	713.1
2017	7,712	3,568,505	.	.	796.1
2018	6,686	3,806,196	.	.	688.2
2019	6,949	3,879,912	.	.	715.9
2020	7,760	3,983,029	.	.	773.1

County: county value. Kansas: state value. County Rank: highest county value ranked #1. (\$000): thousands of dollars. Nonmetro Kansas: Kansas total less Metropolitan Areas as defined by the Office of Management and Budget (OMB; released 3/6/2020). Per 1000: For nonmoney amounts, Per 1000=(county value / county population for the same year as the data) x 1000. \$ Per capita=(county value / county population for the same year as the data). Value= . indicates missing or suppressed data or value not calculated.

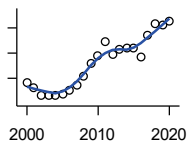
Business



**TOTAL ANNUAL PAYROLL(\$000):
MANUFACTURING**

U.S. Census Bureau, County Business Patterns. Beginning with the 2017 data, any tabulation with fewer than 3 establishments were omitted from the release. Data for these establishments are included in the broader total.

Year	County	State of Kansas	Non Metro Kansas	County Rank	Per 1000 or \$ Per Capita
2000	23,290	7,015,414	.	.	2,124.0
2001	25,303	7,301,706	.	.	2,344.8
2002	28,817	6,802,605	.	.	2,722.4
2003	31,572	6,691,611	.	.	3,021.0
2004	36,629	6,985,656	.	.	3,552.1
2005	39,293	7,221,614	.	.	3,826.0
2006	39,778	7,621,873	.	.	3,910.9
2007	47,910	7,873,359	.	.	4,720.2
2008	49,591	8,441,541	.	.	4,874.3
2009	39,125	7,477,838	.	.	3,865.7
2010	45,666	7,556,955	.	.	4,513.8
2011	59,019	7,747,934	.	.	5,912.0
2012	70,807	7,704,851	.	.	7,062.3
2013	78,882	8,365,542	.	.	7,909.6
2014	76,865	8,787,306	.	.	7,729.0
2015	71,094	9,052,105	.	.	7,221.3
2016	64,425	8,868,744	.	.	6,581.4
2017	56,985	9,075,793	.	.	5,882.6
2018	69,365	9,481,652	.	.	7,140.0
2019	67,295	10,171,575	.	.	6,932.6
2020	77,214	9,744,825	.	.	7,692.2



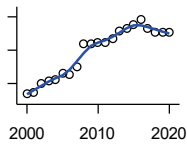
**TOTAL ANNUAL PAYROLL(\$000):
WHOLESALE TRADE**

U.S. Census Bureau, County Business Patterns. Beginning with the 2017 data, any tabulation with fewer than 3 establishments were omitted from the release. Data for these establishments are included in the broader total.

Year	County	State of Kansas	Non Metro Kansas	County Rank	Per 1000 or \$ Per Capita
2000	5,612	2,332,755	.	.	511.8
2001	5,297	2,283,169	.	.	490.9
2002	4,603	2,107,653	.	.	434.9
2003	4,679	2,622,701	.	.	447.7
2004	4,691	2,663,196	.	.	454.9
2005	4,771	2,345,990	.	.	464.6
2006	5,077	2,592,211	.	.	499.2
2007	5,501	2,682,542	.	.	542.0
2008	6,168	3,078,655	.	.	606.3
2009	7,147	2,940,949	.	.	706.2
2010	7,801	3,097,628	.	.	771.1
2011	8,923	3,305,811	.	.	893.8
2012	7,888	3,339,997	.	.	786.8
2013	8,326	3,460,512	.	.	834.9
2014	8,446	3,712,075	.	.	849.3
2015	8,371	3,760,189	.	.	850.3
2016	7,667	3,738,207	.	.	783.2
2017	9,369	3,822,730	.	.	967.2
2018	10,352	3,814,353	.	.	1,065.6
2019	10,201	4,025,802	.	.	1,050.9
2020	10,569	4,224,666	.	.	1,052.9

County: county value. Kansas: state value. County Rank: highest county value ranked #1. (\$000): thousands of dollars. Nonmetro Kansas: Kansas total less Metropolitan Areas as defined by the Office of Management and Budget (OMB; released 3/6/2020). Per 1000: For nonmoney amounts, Per 1000=(county value / county population for the same year as the data) x 1000. \$ Per capita=(county value / county population for the same year as the data). Value= . indicates missing or suppressed data or value not calculated.

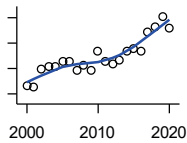
Business



**TOTAL ANNUAL PAYROLL(\$000):
RETAIL TRADE**

U.S. Census Bureau, County Business Patterns. Beginning with the 2017 data, any tabulation with fewer than 3 establishments were omitted from the release. Data for these establishments are included in the broader total.

Year	County	State of Kansas	Non Metro Kansas	County Rank	Per 1000 or \$ Per Capita
2000	5,977	2,747,001	.	.	545.1
2001	6,183	2,813,226	.	.	573.0
2002	7,473	2,854,231	.	.	706.0
2003	7,943	2,773,674	.	.	760.0
2004	7,994	2,847,826	.	.	775.2
2005	9,035	2,952,196	.	.	879.7
2006	8,937	3,126,495	.	.	878.7
2007	9,963	3,201,169	.	.	981.6
2008	13,388	3,261,054	.	.	1,315.9
2009	13,373	3,232,246	.	.	1,321.3
2010	13,725	3,321,838	.	.	1,356.6
2011	13,688	3,384,607	.	.	1,371.1
2012	14,247	3,409,755	.	.	1,421.0
2013	15,397	3,483,752	.	.	1,543.9
2014	15,815	3,617,933	.	.	1,590.2
2015	16,255	3,712,165	.	.	1,651.1
2016	17,116	3,826,889	.	.	1,748.5
2017	15,749	3,797,849	.	.	1,625.8
2018	15,211	3,818,988	.	.	1,565.7
2019	15,192	3,908,994	.	.	1,565.1
2020	15,277	3,984,443	.	.	1,521.9



**TOTAL ANNUAL PAYROLL(\$000):
TRANSPORTATION &
WAREHOUSING**

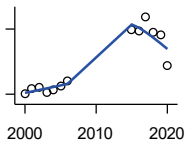
U.S. Census Bureau, County Business Patterns. Beginning with the 2017 data, any tabulation with fewer than 3 establishments were omitted from the release. Data for these establishments are included in the broader total.

Year	County	State of Kansas	Non Metro Kansas	County Rank	Per 1000 or \$ Per Capita
2000	1,320	1,044,835	.	.	120.4
2001	1,249	1,089,405	.	.	115.7
2002	1,956	1,094,636	.	.	184.8
2003	2,070	1,316,655	.	.	198.1
2004	2,076	1,439,800	.	.	201.3
2005	2,298	1,393,651	.	.	223.8
2006	2,269	1,528,551	.	.	223.1
2007	1,945	1,788,267	.	.	191.6
2008	2,142	1,722,697	.	.	210.5
2009	1,924	1,618,598	.	.	190.1
2010	2,677	1,735,761	.	.	264.6
2011	2,289	1,739,165	.	.	229.3
2012	2,155	1,984,976	.	.	214.9
2013	2,346	2,006,261	.	.	235.2
2014	2,690	2,097,377	.	.	270.5
2015	2,784	2,190,072	.	.	282.8
2016	2,707	2,202,859	.	.	276.5
2017	3,439	2,546,061	.	.	355.0
2018	3,652	2,663,188	.	.	375.9
2019	4,047	2,879,406	.	.	416.9
2020	3,579	2,962,461	.	.	356.5

County: county value. Kansas: state value. County Rank: highest county value ranked #1. (\$000): thousands of dollars. Nonmetro Kansas: Kansas total less Metropolitan Areas as defined by the Office of Management and Budget (OMB; released 3/6/2020). Per 1000: For nonmoney amounts, Per 1000=(county value / county population for the same year as the data) x 1000. \$ Per capita=(county value / county population for the same year as the data). Value= . indicates missing or suppressed data or value not calculated.

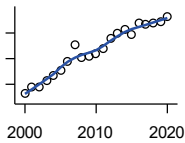
Business

**TOTAL ANNUAL PAYROLL(\$000):
INFORMATION**



U.S. Census Bureau, County Business Patterns. Beginning with the 2017 data, any tabulation with fewer than 3 establishments were omitted from the release. Data for these establishments are included in the broader total.

Year	County	State of Kansas	Non Metro Kansas	County Rank	Per 1000 or \$ Per Capita
2000	2,033	1,923,381	.	.	185.4
2001	2,246	2,218,610	.	.	208.1
2002	2,298	2,298,108	.	.	217.1
2003	2,083	2,378,673	.	.	199.3
2004	2,171	2,392,990	.	.	210.5
2005	2,396	2,395,081	.	.	233.3
2006	2,628	2,586,483	.	.	258.4
2007	.	2,594,138	.	.	.
2008	.	3,043,244	.	.	.
2009	.	3,045,570	.	.	.
2010	.	2,481,580	.	.	.
2011	.	2,513,805	.	.	.
2012	.	2,535,555	.	.	.
2013	.	2,805,017	.	.	.
2014	.	2,393,609	.	.	.
2015	4,994	2,406,323	.	.	507.3
2016	4,923	2,080,211	.	.	502.9
2017	5,562	2,090,021	.	.	574.2
2018	4,878	2,341,543	.	.	502.1
2019	4,758	2,133,891	.	.	490.2
2020	3,295	2,245,204	.	.	328.3



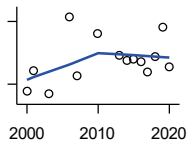
**TOTAL ANNUAL PAYROLL(\$000):
FINANCE & INSURANCE**

U.S. Census Bureau, County Business Patterns. Beginning with the 2017 data, any tabulation with fewer than 3 establishments were omitted from the release. Data for these establishments are included in the broader total.

Year	County	State of Kansas	Non Metro Kansas	County Rank	Per 1000 or \$ Per Capita
2000	5,286	2,083,565	.	.	482.1
2001	5,809	2,129,587	.	.	538.3
2002	5,818	2,414,120	.	.	549.6
2003	6,244	2,608,579	.	.	597.5
2004	6,724	2,676,910	.	.	652.1
2005	7,113	2,786,136	.	.	692.6
2006	7,802	2,928,931	.	.	767.1
2007	9,032	3,096,017	.	.	889.9
2008	8,112	3,322,977	.	.	797.3
2009	8,198	3,206,839	.	.	810.0
2010	8,370	3,211,300	.	.	827.3
2011	8,779	3,404,633	.	.	879.4
2012	9,624	3,611,165	.	.	959.9
2013	9,979	3,896,051	.	.	1,000.6
2014	10,248	4,044,315	.	.	1,030.5
2015	9,903	4,113,060	.	.	1,005.9
2016	10,805	4,180,740	.	.	1,103.8
2017	10,690	4,258,057	.	.	1,103.5
2018	10,736	4,682,552	.	.	1,105.1
2019	10,837	4,814,201	.	.	1,116.4
2020	11,286	5,288,529	.	.	1,124.3

County: county value. Kansas: state value. County Rank: highest county value ranked #1. (\$000): thousands of dollars. Nonmetro Kansas: Kansas total less Metropolitan Areas as defined by the Office of Management and Budget (OMB; released 3/6/2020). Per 1000: For nonmoney amounts, Per 1000=(county value / county population for the same year as the data) x 1000. \$ Per capita=(county value / county population for the same year as the data). Value= . indicates missing or suppressed data or value not calculated.

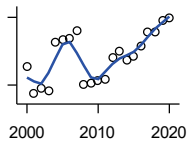
Business



**TOTAL ANNUAL PAYROLL(\$000):
REAL ESTATE, RENTAL, AND
LEASING**

U.S. Census Bureau, County Business Patterns. Beginning with the 2017 data, any tabulation with fewer than 3 establishments were omitted from the release. Data for these establishments are included in the broader total.

Year	County	State of Kansas	Non Metro Kansas	County Rank	Per 1000 or \$ Per Capita
2000	32	360,637	.	.	2.9
2001	81	397,371	.	.	7.5
2002	.	403,695	.	.	.
2003	26	437,786	.	.	2.5
2004	.	430,719	.	.	.
2005	.	465,149	.	.	.
2006	211	478,811	.	.	20.7
2007	69	452,969	.	.	6.8
2008	.	484,149	.	.	.
2009	.	450,884	.	.	.
2010	171	487,255	.	.	16.9
2011	.	535,120	.	.	.
2012	.	531,039	.	.	.
2013	119	538,796	.	.	11.9
2014	107	542,307	.	.	10.8
2015	110	595,030	.	.	11.2
2016	104	607,668	.	.	10.6
2017	78	590,373	.	.	8.1
2018	117	600,037	.	.	12.0
2019	186	622,881	.	.	19.2
2020	92	670,656	.	.	9.2



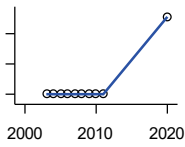
**TOTAL ANNUAL PAYROLL(\$000):
PROFESSIONAL, SCIENTIFIC, AND
TECHNICAL SERVICES**

U.S. Census Bureau, County Business Patterns. Beginning with the 2017 data, any tabulation with fewer than 3 establishments were omitted from the release. Data for these establishments are included in the broader total.

Year	County	State of Kansas	Non Metro Kansas	County Rank	Per 1000 or \$ Per Capita
2000	2,836	2,057,313	.	.	258.6
2001	1,608	2,152,937	.	.	149.0
2002	1,833	2,150,085	.	.	173.2
2003	1,754	2,052,712	.	.	167.8
2004	3,883	2,531,457	.	.	376.6
2005	4,015	2,418,500	.	.	390.9
2006	4,055	2,655,690	.	.	398.7
2007	4,386	2,901,544	.	.	432.1
2008	2,008	2,903,802	.	.	197.4
2009	2,071	3,071,611	.	.	204.6
2010	2,187	3,037,182	.	.	216.2
2011	2,268	3,132,082	.	.	227.2
2012	3,227	3,455,548	.	.	321.9
2013	3,498	3,777,729	.	.	350.7
2014	3,083	3,981,580	.	.	310.0
2015	3,260	4,039,074	.	.	331.1
2016	3,745	4,125,507	.	.	382.6
2017	4,348	4,158,858	.	.	448.8
2018	4,380	4,314,317	.	.	450.8
2019	4,872	4,646,644	.	.	501.9
2020	4,991	4,927,611	.	.	497.2

County: county value. Kansas: state value. County Rank: highest county value ranked #1. (\$000): thousands of dollars. Nonmetro Kansas: Kansas total less Metropolitan Areas as defined by the Office of Management and Budget (OMB; released 3/6/2020). Per 1000: For nonmoney amounts, Per 1000=(county value / county population for the same year as the data) x 1000. \$ Per capita=(county value / county population for the same year as the data). Value= . indicates missing or suppressed data or value not calculated.

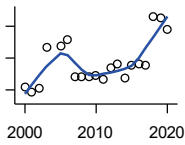
Business



**TOTAL ANNUAL PAYROLL(\$000):
MANAGEMENT OF COMPANIES AND
ENTERPRISES**

U.S. Census Bureau, County Business Patterns. Beginning with the 2017 data, any tabulation with fewer than 3 establishments were omitted from the release. Data for these establishments are included in the broader total.

Year	County	State of Kansas	Non Metro Kansas	County Rank	Per 1000 or \$ Per Capita
2000	.	1,362,735	.	.	.
2001	.	1,279,253	.	.	.
2002	.	1,311,368	.	.	.
2003	0	1,352,119	.	.	0.0
2004	0	1,378,891	.	.	0.0
2005	0	1,510,876	.	.	0.0
2006	0	1,626,320	.	.	0.0
2007	0	2,233,654	.	.	0.0
2008	0	1,848,656	.	.	0.0
2009	0	1,601,158	.	.	0.0
2010	0	2,003,048	.	.	0.0
2011	0	1,677,619	.	.	0.0
2012	.	1,834,430	.	.	.
2013	.	1,938,100	.	.	.
2014	.	2,117,232	.	.	.
2015	.	2,451,126	.	.	.
2020	1,023	2,578,116	.	.	101.9



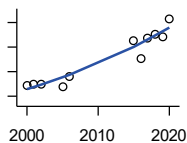
**TOTAL ANNUAL PAYROLL(\$000):
ADMIN, SUPPORT, WASTE MGMT.,
AND REMEDIATION**

U.S. Census Bureau, County Business Patterns. Beginning with the 2017 data, any tabulation with fewer than 3 establishments were omitted from the release. Data for these establishments are included in the broader total.

Year	County	State of Kansas	Non Metro Kansas	County Rank	Per 1000 or \$ Per Capita
2000	2,100	1,388,712	.	.	191.5
2001	1,920	1,416,480	.	.	177.9
2002	2,038	1,378,905	.	.	192.5
2003	3,334	1,387,061	.	.	319.0
2004	.	1,544,442	.	.	.
2005	3,387	1,694,687	.	.	329.8
2006	3,578	1,800,846	.	.	351.8
2007	2,431	1,978,025	.	.	239.5
2008	2,422	2,096,864	.	.	238.1
2009	2,404	1,832,540	.	.	237.5
2010	2,459	2,117,325	.	.	243.1
2011	2,315	2,114,970	.	.	231.9
2012	2,678	2,230,250	.	.	267.1
2013	2,796	2,214,320	.	.	280.4
2014	2,365	2,444,170	.	.	237.8
2015	2,770	2,577,592	.	.	281.4
2016	2,809	2,760,706	.	.	287.0
2017	2,785	3,026,927	.	.	287.5
2018	4,297	3,007,347	.	.	442.3
2019	4,249	3,075,485	.	.	437.7
2020	3,912	3,250,046	.	.	389.7

County: county value. Kansas: state value. County Rank: highest county value ranked #1. (\$000): thousands of dollars. Nonmetro Kansas: Kansas total less Metropolitan Areas as defined by the Office of Management and Budget (OMB; released 3/6/2020). Per 1000: For nonmoney amounts, Per 1000=(county value / county population for the same year as the data) x 1000. \$ Per capita=(county value / county population for the same year as the data). Value= . indicates missing or suppressed data or value not calculated.

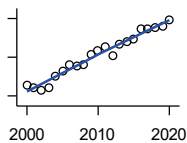
Business



**TOTAL ANNUAL PAYROLL(\$000):
EDUCATIONAL SERVICES**

U.S. Census Bureau, County Business Patterns. Beginning with the 2017 data, any tabulation with fewer than 3 establishments were omitted from the release. Data for these establishments are included in the broader total.

Year	County	State of Kansas	Non Metro Kansas	County Rank	Per 1000 or \$ Per Capita
2000	444	299,843	.	.	40.5
2001	449	320,606	.	.	41.6
2002	451	353,531	.	.	42.6
2003	.	350,814	.	.	.
2004	.	361,644	.	.	.
2005	437	375,781	.	.	42.6
2006	479	400,565	.	.	47.1
2007	.	414,233	.	.	.
2008	.	463,210	.	.	.
2009	.	468,856	.	.	.
2010	.	487,670	.	.	.
2011	.	504,964	.	.	.
2012	.	508,448	.	.	.
2013	.	553,995	.	.	.
2014	.	612,073	.	.	.
2015	627	579,794	.	.	63.7
2016	555	571,582	.	.	56.7
2017	638	597,320	.	.	65.9
2018	652	618,864	.	.	67.1
2019	644	654,965	.	.	66.3
2020	715	652,468	.	.	71.2



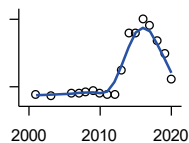
**TOTAL ANNUAL PAYROLL(\$000):
HEALTH CARE AND SOCIAL ASSISTANCE**

U.S. Census Bureau, County Business Patterns. Beginning with the 2017 data, any tabulation with fewer than 3 establishments were omitted from the release. Data for these establishments are included in the broader total.

Year	County	State of Kansas	Non Metro Kansas	County Rank	Per 1000 or \$ Per Capita
2000	13,086	4,120,595	.	.	1,193.4
2001	12,857	4,445,027	.	.	1,191.5
2002	12,547	4,705,220	.	.	1,185.4
2003	12,868	4,939,323	.	.	1,231.3
2004	14,040	5,232,394	.	.	1,361.5
2005	14,527	5,487,089	.	.	1,414.5
2006	15,247	5,814,218	.	.	1,499.1
2007	15,095	6,186,471	.	.	1,487.2
2008	15,275	6,490,627	.	.	1,501.4
2009	16,330	6,749,962	.	.	1,613.5
2010	16,701	6,871,727	.	.	1,650.8
2011	17,087	7,129,655	.	.	1,711.6
2012	16,150	7,614,853	.	.	1,610.8
2013	17,353	7,541,515	.	.	1,740.0
2014	17,618	7,733,621	.	.	1,771.5
2015	17,871	7,969,650	.	.	1,815.2
2016	18,973	8,018,706	.	.	1,938.2
2017	18,933	8,384,998	.	.	1,954.5
2018	19,014	8,637,619	.	.	1,957.2
2019	19,248	8,854,414	.	.	1,982.9
2020	19,885	9,309,269	.	.	1,981.0

County: county value. Kansas: state value. County Rank: highest county value ranked #1. (\$000): thousands of dollars. Nonmetro Kansas: Kansas total less Metropolitan Areas as defined by the Office of Management and Budget (OMB; released 3/6/2020). Per 1000: For nonmoney amounts, Per 1000=(county value / county population for the same year as the data) x 1000. \$ Per capita=(county value / county population for the same year as the data). Value= . indicates missing or suppressed data or value not calculated.

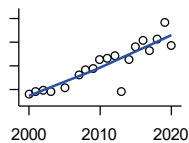
Business



**TOTAL ANNUAL PAYROLL(\$000):
ARTS, ENTERTAINMENT, AND
RECREATION**

U.S. Census Bureau, County Business Patterns. Beginning with the 2017 data, any tabulation with fewer than 3 establishments were omitted from the release. Data for these establishments are included in the broader total.

Year	County	State of Kansas	Non Metro Kansas	County Rank	Per 1000 or \$ Per Capita
2000	.	195,784	.	.	.
2001	167	203,511	.	.	15.5
2002	.	206,204	.	.	.
2003	158	185,049	.	.	15.1
2004	.	190,742	.	.	.
2005	.	196,594	.	.	.
2006	169	201,049	.	.	16.6
2007	172	220,435	.	.	16.9
2008	178	236,986	.	.	17.5
2009	182	237,116	.	.	18.0
2010	170	233,285	.	.	16.8
2011	163	234,351	.	.	16.3
2012	166	254,169	.	.	16.6
2013	275	278,474	.	.	27.6
2014	438	289,103	.	.	44.0
2015	439	300,253	.	.	44.6
2016	502	312,902	.	.	51.3
2017	473	323,153	.	.	48.8
2018	402	325,454	.	.	41.4
2019	348	335,362	.	.	35.9
2020	235	298,119	.	.	23.4



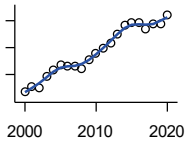
**TOTAL ANNUAL PAYROLL(\$000):
ACCOMMODATION AND FOOD
SERVICES**

U.S. Census Bureau, County Business Patterns. Beginning with the 2017 data, any tabulation with fewer than 3 establishments were omitted from the release. Data for these establishments are included in the broader total.

Year	County	State of Kansas	Non Metro Kansas	County Rank	Per 1000 or \$ Per Capita
2000	1,902	926,831	.	.	173.5
2001	1,964	960,196	.	.	182.0
2002	1,986	930,510	.	.	187.6
2003	1,944	992,313	.	.	186.0
2004	.	1,046,901	.	.	.
2005	2,029	1,101,854	.	.	197.6
2006	.	1,185,280	.	.	.
2007	2,315	1,431,100	.	.	228.1
2008	2,424	1,271,594	.	.	238.3
2009	2,441	1,283,065	.	.	241.2
2010	2,633	1,296,556	.	.	260.3
2011	2,668	1,364,281	.	.	267.3
2012	2,709	1,388,337	.	.	270.2
2013	1,945	1,476,335	.	.	195.0
2014	2,642	1,572,021	.	.	265.7
2015	2,900	1,640,144	.	.	294.6
2016	3,026	1,709,193	.	.	309.1
2017	2,831	1,824,791	.	.	292.2
2018	3,070	1,880,364	.	.	316.0
2019	3,427	1,958,603	.	.	353.0
2020	2,942	1,745,238	.	.	293.1

County: county value. Kansas: state value. County Rank: highest county value ranked #1. (\$000): thousands of dollars. Nonmetro Kansas: Kansas total less Metropolitan Areas as defined by the Office of Management and Budget (OMB; released 3/6/2020). Per 1000: For nonmoney amounts, Per 1000=(county value / county population for the same year as the data) x 1000. \$ Per capita=(county value / county population for the same year as the data). Value= . indicates missing or suppressed data or value not calculated.

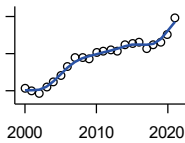
Business



**TOTAL ANNUAL PAYROLL(\$000):
OTHER SERVICES**

U.S. Census Bureau, County Business Patterns. Beginning with the 2017 data, any tabulation with fewer than 3 establishments were omitted from the release. Data for these establishments are included in the broader total.

Year	County	State of Kansas	Non Metro Kansas	County Rank	Per 1000 or \$ Per Capita
2000	1,683	965,540	.	.	153.5
2001	1,775	996,716	.	.	164.5
2002	1,749	1,007,464	.	.	165.2
2003	1,970	979,466	.	.	188.5
2004	2,086	970,383	.	.	202.3
2005	2,176	1,005,537	.	.	211.9
2006	2,158	1,055,932	.	.	212.2
2007	2,165	1,141,551	.	.	213.3
2008	2,107	1,184,016	.	.	207.1
2009	2,275	1,167,154	.	.	224.8
2010	2,391	1,170,201	.	.	236.3
2011	2,487	1,173,775	.	.	249.1
2012	2,592	1,217,210	.	.	258.5
2013	2,755	1,254,933	.	.	276.2
2014	2,927	1,305,563	.	.	294.3
2015	2,964	1,341,075	.	.	301.1
2016	2,973	1,351,375	.	.	303.7
2017	2,854	1,344,179	.	.	294.6
2018	2,945	1,382,801	.	.	303.1
2019	2,934	1,427,711	.	.	302.3
2020	3,109	1,420,859	.	.	309.7



**NOMINAL TAXABLE RETAIL SALES
(million\$)**

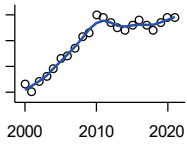
Kansas Department of Revenue

Year	County	State of Kansas	Non Metro Kansas	County Rank	Per 1000 or \$ Per Capita
2000	82.9	30,119.0	8,831.7	40	7.6
2001	79.2	30,202.2	8,700.3	40	7.3
2002	76.6	29,380.8	8,241.5	40	7.2
2003	84.1	30,694.0	8,710.6	39	8.0
2004	89.5	31,922.6	9,062.5	38	8.7
2005	96.5	32,924.2	9,386.6	38	9.4
2006	105.7	34,937.6	10,042.1	36	10.4
2007	115.3	36,180.1	10,553.2	35	11.4
2008	116.0	37,559.5	11,126.9	36	11.4
2009	114.6	35,211.8	10,351.5	36	11.3
2010	120.8	35,655.7	10,606.1	36	11.9
2011	122.1	37,257.0	11,153.5	36	12.2
2012	123.4	38,988.8	11,749.1	36	12.3
2013	123.1	40,009.0	11,993.8	37	12.3
2014	129.3	41,299.0	12,365.4	35	13.0
2015	131.2	41,635.8	11,747.6	35	13.3
2016	132.9	42,040.2	11,523.5	35	13.6
2017	125.2	41,940.1	11,449.9	35	12.9
2018	129.4	42,732.3	11,643.9	35	13.3
2019	132.6	43,732.5	12,062.7	36	13.7
2020	140.8	43,689.9	12,331.7	36	14.0
2021	158.0	48,532.8	13,413.0	36	15.8

County: county value. Kansas: state value. County Rank: highest county value ranked #1. (\$000): thousands of dollars. Nonmetro Kansas: Kansas total less Metropolitan Areas as defined by the Office of Management and Budget (OMB; released 3/6/2020). Per 1000: For nonmoney amounts, Per 1000=(county value / county population for the same year as the data) x 1000. \$ Per capita=(county value / county population for the same year as the data). Value= . indicates missing or suppressed data or value not calculated.

Business

RETAIL PULL FACTOR



Kansas Direct Program, Kansas State University Cooperative Extension Service (1980-1999); Kansas Department of Revenue (2000-)

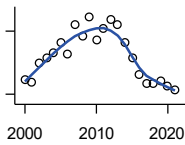
Year	County	State of Kansas	Non Metro Kansas	County Rank	Per 1000 or \$ Per Capita
2000	0.68	.	.	38	.
2001	0.65	.	.	44	.
2002	0.69	.	.	36	.
2003	0.71	.	.	39	.
2004	0.74	.	.	38	.
2005	0.78	.	.	37	.
2006	0.79	.	.	39	.
2007	0.82	.	.	38	.
2008	0.87	.	.	35	.
2009	0.88	.	.	36	.
2010	0.95	.	.	30	.
2011	0.94	.	.	27	.
2012	0.92	.	.	33	.
2013	0.90	.	.	37	.
2014	0.89	.	.	39	.
2015	0.91	.	.	33	.
2016	0.93	.	.	26	.
2017	0.91	.	.	24	.
2018	0.89	.	.	26	.
2019	0.92	.	.	28	.
2020	0.94	.	.	23	.
2021	0.94	.	.	22	.

County: county value. Kansas: state value. County Rank: highest county value ranked #1. (\$000): thousands of dollars. Nonmetro Kansas: Kansas total less Metropolitan Areas as defined by the Office of Management and Budget (OMB; released 3/6/2020). Per 1000: For nonmoney amounts, Per 1000=(county value / county population for the same year as the data) x 1000. \$ Per capita=(county value / county population for the same year as the data). Value= . indicates missing or suppressed data or value not calculated.

Employment

CIVILIAN LABOR FORCE (BLS-Place of Residence; 1990-)

U.S. Department of Labor, Bureau of Labor Statistics (BLS)



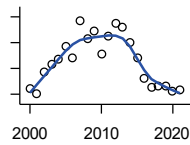
Year	County	State of Kansas	Non Metro Kansas	County Rank	Per 1000 or \$ Per Capita
2000	5,544	1,402,606	482,229	38	505.6
2001	5,514	1,398,521	475,280	38	511.0
2002	5,698	1,419,335	482,428	38	538.3
2003	5,745	1,441,065	490,161	39	549.7
2004	5,799	1,458,910	494,509	39	562.4
2005	5,890	1,458,767	490,047	38	573.5
2006	5,787	1,467,553	498,594	39	569.0
2007	6,066	1,485,414	497,048	38	597.6
2008	5,952	1,493,365	504,522	38	585.0
2009	6,136	1,512,572	516,311	38	606.3
2010	5,910	1,500,463	492,594	38	584.2
2011	6,022	1,498,000	492,563	38	603.2
2012	6,107	1,490,808	489,349	38	609.1
2013	6,056	1,489,395	485,484	38	607.2
2014	5,886	1,494,203	481,813	38	591.9
2015	5,751	1,493,782	477,546	39	584.2
2016	5,588	1,491,961	468,258	39	570.8
2017	5,505	1,488,346	461,063	39	568.3
2018	5,504	1,488,027	456,866	38	566.5
2019	5,523	1,497,517	455,858	38	569.0
2020	5,482	1,493,706	452,935	39	546.1
2021	5,436	1,495,665	453,398	39	544.7

County: county value. Kansas: state value. County Rank: highest county value ranked #1. (\$000): thousands of dollars. Nonmetro Kansas: Kansas total less Metropolitan Areas as defined by the Office of Management and Budget (OMB; released 3/6/2020). Per 1000: For nonmoney amounts, Per 1000=(county value / county population for the same year as the data) x 1000. \$ Per capita=(county value / county population for the same year as the data). Value= . indicates missing or suppressed data or value not calculated.

Employment

EMPLOYED (BLS-Place of Residence; 1990-)

U.S. Department of Labor, Bureau of Labor Statistics (BLS)



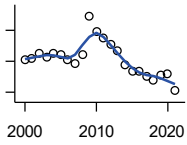
Year	County	State of Kansas	Non Metro Kansas	County Rank	Per 1000 or \$ Per Capita
2000	5,340	1,349,841	464,962	38	487.0
2001	5,303	1,338,775	455,154	38	491.4
2002	5,472	1,347,163	461,241	38	517.0
2003	5,533	1,361,115	467,622	39	529.4
2004	5,573	1,378,355	470,330	39	540.4
2005	5,669	1,384,654	467,722	38	552.0
2006	5,583	1,402,950	479,174	39	548.9
2007	5,874	1,422,109	477,983	38	578.7
2008	5,730	1,425,022	484,056	38	563.2
2009	5,792	1,408,142	485,797	38	572.3
2010	5,613	1,396,172	461,635	38	554.8
2011	5,746	1,402,198	463,723	38	575.6
2012	5,853	1,405,638	463,376	38	583.8
2013	5,823	1,410,470	461,405	38	583.9
2014	5,697	1,426,892	461,797	38	572.9
2015	5,583	1,431,533	457,899	39	567.1
2016	5,419	1,431,920	449,356	39	553.6
2017	5,352	1,434,516	445,003	39	552.5
2018	5,364	1,439,329	442,716	39	552.1
2019	5,368	1,450,705	442,108	38	553.0
2020	5,321	1,408,965	433,229	39	530.1
2021	5,331	1,447,323	441,159	39	534.2

County: county value. Kansas: state value. County Rank: highest county value ranked #1. (\$000): thousands of dollars. Nonmetro Kansas: Kansas total less Metropolitan Areas as defined by the Office of Management and Budget (OMB; released 3/6/2020). Per 1000: For nonmoney amounts, Per 1000=(county value / county population for the same year as the data) x 1000. \$ Per capita=(county value / county population for the same year as the data). Value= . indicates missing or suppressed data or value not calculated.

Employment

UNEMPLOYED (BLS-Place of Residence; 1990-)

U.S. Department of Labor, Bureau of Labor Statistics (BLS)

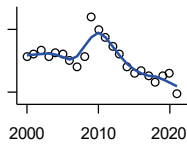


Year	County	State of Kansas	Non Metro Kansas	County Rank	Per 1000 or \$ Per Capita
2000	204	52,765	17,267	41	18.6
2001	211	59,746	20,126	44	19.6
2002	226	72,172	21,187	43	21.4
2003	212	79,950	22,539	47	20.3
2004	226	80,555	24,179	46	21.9
2005	221	74,113	22,325	45	21.5
2006	204	64,603	19,420	44	20.1
2007	192	63,305	19,065	46	18.9
2008	222	68,343	20,466	43	21.8
2009	344	104,430	30,514	41	34.0
2010	297	104,291	30,959	44	29.4
2011	276	95,802	28,840	45	27.6
2012	254	85,170	25,973	44	25.3
2013	233	78,925	24,079	45	23.4
2014	189	67,311	20,016	45	19.0
2015	168	62,249	19,647	47	17.1
2016	169	60,041	18,902	46	17.3
2017	153	53,830	16,060	46	15.8
2018	140	48,698	14,150	45	14.4
2019	155	46,812	13,750	41	16.0
2020	161	84,741	19,706	48	16.0
2021	105	48,342	12,239	47	10.5

County: county value. Kansas: state value. County Rank: highest county value ranked #1. (\$000): thousands of dollars. Nonmetro Kansas: Kansas total less Metropolitan Areas as defined by the Office of Management and Budget (OMB; released 3/6/2020). Per 1000: For nonmoney amounts, Per 1000=(county value / county population for the same year as the data) x 1000. \$ Per capita=(county value / county population for the same year as the data). Value= . indicates missing or suppressed data or value not calculated.

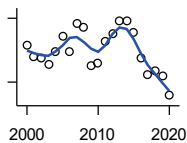
Employment

UNEMPLOYMENT RATE (BLS-Place of Residence; 1990-)



U.S. Department of Labor, Bureau of Labor Statistics (BLS)

Year	County	State of Kansas	Non Metro Kansas	County Rank	Per 1000 or \$ Per Capita
2000	3.7	3.8	3.6	38	.
2001	3.8	4.3	4.2	42	.
2002	4.0	5.1	4.4	51	.
2003	3.7	5.5	4.6	72	.
2004	3.9	5.5	4.9	77	.
2005	3.8	5.1	4.6	71	.
2006	3.5	4.4	3.9	61	.
2007	3.2	4.3	3.8	78	.
2008	3.7	4.6	4.1	55	.
2009	5.6	6.9	5.9	47	.
2010	5.0	7.0	6.3	63	.
2011	4.6	6.4	5.9	63	.
2012	4.2	5.7	5.3	66	.
2013	3.8	5.3	5.0	71	.
2014	3.2	4.5	4.2	78	.
2015	2.9	4.2	4.1	89	.
2016	3.0	4.0	4.0	84	.
2017	2.8	3.6	3.5	79	.
2018	2.5	3.3	3.1	78	.
2019	2.8	3.1	3.0	57	.
2020	2.9	5.7	4.4	78	.
2021	1.9	3.2	2.7	86	.



BEA EMPLOYMENT: TOTAL (Place of Work)

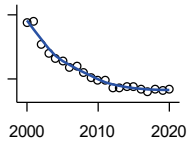
U.S. Bureau of Economic Analysis, Regional Economic Information System (REIS)

Year	County	State of Kansas	Non Metro Kansas	County Rank	Per 1000 or \$ Per Capita
2000	7,548	1,760,312	604,361	35	688.4
2001	7,442	1,767,601	592,672	34	689.6
2002	7,421	1,746,077	585,387	34	701.1
2003	7,371	1,733,694	577,860	34	705.3
2004	7,487	1,750,876	578,750	34	726.0
2005	7,630	1,765,650	577,562	34	742.9
2006	7,488	1,795,507	583,041	34	736.2
2007	7,757	1,844,355	591,924	34	764.2
2008	7,712	1,858,069	594,368	34	758.0
2009	7,349	1,813,184	580,972	34	726.1
2010	7,382	1,801,873	579,758	34	729.7
2011	7,578	1,819,044	583,725	34	759.1
2012	7,658	1,841,393	591,748	34	763.8
2013	7,776	1,869,054	597,236	34	779.7
2014	7,770	1,895,859	601,291	34	781.3
2015	7,664	1,910,954	598,589	34	778.5
2016	7,429	1,916,152	592,580	35	758.9
2017	7,267	1,914,179	584,337	35	750.2
2018	7,302	1,926,242	580,213	35	751.6
2019	7,260	1,925,204	574,496	35	747.9
2020	7,073	1,851,247	556,671	35	704.6

County: county value. Kansas: state value. County Rank: highest county value ranked #1. (\$000): thousands of dollars. Nonmetro Kansas: Kansas total less Metropolitan Areas as defined by the Office of Management and Budget (OMB; released 3/6/2020). Per 1000: For nonmoney amounts, Per 1000=(county value / county population for the same year as the data) x 1000. \$ Per capita=(county value / county population for the same year as the data). Value= . indicates missing or suppressed data or value not calculated.

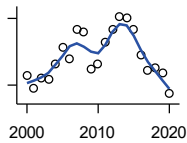
Employment

BEA EMPLOYMENT: FARM



U.S. Bureau of Economic Analysis,
Regional Economic Information System
(REIS)

Year	County	State of Kansas	Non Metro Kansas	County Rank	Per 1000 or \$ Per Capita
2000	1,064	77,477	59,088	16	97.0
2001	1,067	78,177	59,647	16	98.9
2002	963	70,532	53,893	16	91.0
2003	921	68,516	52,099	17	88.1
2004	898	67,586	51,246	20	87.1
2005	886	66,829	50,386	20	86.3
2006	855	64,910	48,728	20	84.1
2007	859	65,639	49,037	21	84.6
2008	830	63,820	47,682	23	81.6
2009	805	62,798	46,960	25	79.5
2010	797	63,882	47,984	25	78.8
2011	793	65,761	49,707	27	79.4
2012	761	63,753	48,167	26	75.9
2013	759	62,739	47,255	25	76.1
2014	765	64,308	48,722	26	76.9
2015	764	64,416	48,927	26	77.6
2016	755	63,840	48,539	26	77.1
2017	738	61,876	46,936	26	76.2
2018	750	63,233	48,069	26	77.2
2019	749	63,300	48,167	26	77.2
2020	752	64,281	49,038	30	74.9



BEA EMPLOYMENT: NON-FARM

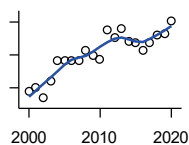
U.S. Bureau of Economic Analysis,
Regional Economic Information System
(REIS)

Year	County	State of Kansas	Non Metro Kansas	County Rank	Per 1000 or \$ Per Capita
2000	6,484	1,682,835	545,273	35	591.3
2001	6,375	1,689,424	533,025	34	590.8
2002	6,458	1,675,545	531,494	34	610.1
2003	6,450	1,665,178	525,761	34	617.2
2004	6,589	1,683,290	527,504	34	639.0
2005	6,744	1,698,821	527,176	34	656.7
2006	6,633	1,730,597	534,313	35	652.1
2007	6,898	1,778,716	542,887	34	679.6
2008	6,882	1,794,249	546,686	34	676.4
2009	6,544	1,750,386	534,012	35	646.6
2010	6,585	1,737,991	531,774	34	650.9
2011	6,785	1,753,283	534,018	34	679.7
2012	6,897	1,777,640	543,581	34	687.9
2013	7,017	1,806,315	549,981	34	703.6
2014	7,005	1,831,551	552,569	34	704.4
2015	6,900	1,846,538	549,662	34	700.9
2016	6,674	1,852,312	544,041	35	681.8
2017	6,529	1,852,303	537,401	35	674.0
2018	6,552	1,863,009	532,144	36	674.4
2019	6,511	1,861,904	526,329	35	670.8
2020	6,321	1,786,966	507,633	35	629.7

County: county value. Kansas: state value. County Rank: highest county value ranked #1. (\$000): thousands of dollars. Nonmetro Kansas: Kansas total less Metropolitan Areas as defined by the Office of Management and Budget (OMB; released 3/6/2020). Per 1000: For nonmoney amounts, Per 1000=(county value / county population for the same year as the data) x 1000. \$ Per capita=(county value / county population for the same year as the data). Value= . indicates missing or suppressed data or value not calculated.

Employment

AVERAGE WAGE PER JOB (\$)



U.S. Bureau of Economic Analysis,
Regional Economic Information System
(REIS)

Year	County	State of Kansas	Non Metro Kansas	County Rank	Per 1000 or \$ Per Capita
2000	23,960	31,854	24,396	40	.
2001	25,025	32,859	26,379	51	.
2002	21,837	33,707	26,331	70	.
2003	27,030	35,078	28,911	58	.
2004	33,332	35,932	29,747	16	.
2005	33,363	37,467	31,646	30	.
2006	33,243	40,038	31,993	26	.
2007	33,108	41,500	33,484	44	.
2008	36,558	44,197	36,256	38	.
2009	34,824	43,860	35,739	46	.
2010	33,771	45,370	38,631	73	.
2011	42,622	48,280	42,324	52	.
2012	40,343	50,549	42,015	51	.
2013	42,925	52,629	46,073	56	.
2014	39,101	51,959	43,562	63	.
2015	38,634	52,250	42,320	57	.
2016	36,514	51,664	41,964	71	.
2017	38,652	53,007	42,137	60	.
2018	41,213	54,790	44,514	56	.
2019	41,539	56,956	45,336	58	.
2020	45,365	60,597	49,183	62	.

BEA EMPLOYMENT: FORESTRY, FISHING, HUNTING, AND AG SUPPORT

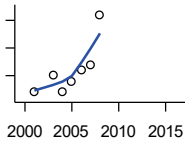
U.S. Bureau of Economic Analysis,
Regional Economic Information System
(REIS)

Year	County	State of Kansas	Non Metro Kansas	County Rank	Per 1000 or \$ Per Capita
2001	.	7,059	.	.	.
2002	.	8,045	.	.	.
2003	.	7,313	.	.	.
2004	.	7,623	.	.	.
2005	.	7,962	.	.	.
2006	.	7,748	.	.	.
2007	.	8,228	.	.	.
2008	.	8,646	.	.	.
2009	.	8,982	.	.	.
2010	.	9,251	.	.	.
2011	.	9,410	.	.	.
2012	.	9,691	.	.	.
2013	.	10,014	.	.	.
2014	.	10,708	.	.	.
2015	.	10,020	.	.	.
2016	.	10,383	.	.	.

County: county value. Kansas: state value. County Rank: highest county value ranked #1. (\$000): thousands of dollars. Nonmetro Kansas: Kansas total less Metropolitan Areas as defined by the Office of Management and Budget (OMB; released 3/6/2020). Per 1000: For nonmoney amounts, Per 1000=(county value / county population for the same year as the data) x 1000. \$ Per capita=(county value / county population for the same year as the data). Value= . indicates missing or suppressed data or value not calculated.

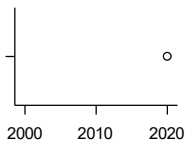
Employment

BEA EMPLOYMENT: MINING



U.S. Bureau of Economic Analysis,
Regional Economic Information System
(REIS)

Year	County	State of Kansas	Non Metro Kansas	County Rank	Per 1000 or \$ Per Capita
2001	17	19,592	.	52	.
2002	.	17,635	.	.	.
2003	20	19,869	.	47	.
2004	17	18,466	.	51	.
2005	19	19,489	.	51	.
2006	21	22,403	.	53	.
2007	22	24,043	.	50	.
2008	31	31,467	.	46	.
2009	.	29,941	.	.	.
2010	.	36,124	.	.	.
2011	.	31,658	.	.	.
2012	.	42,405	.	.	.
2013	.	46,585	.	.	.
2014	.	45,526	.	.	.
2015	.	46,460	.	.	.
2016	.	48,555	.	.	.



BEA EMPLOYMENT: UTILITIES

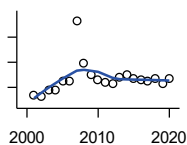
U.S. Bureau of Economic Analysis,
Regional Economic Information System
(REIS)

Year	County	State of Kansas	Non Metro Kansas	County Rank	Per 1000 or \$ Per Capita
2001	.	7,608	.	.	.
2002	.	7,087	.	.	.
2003	.	7,253	.	.	.
2004	.	7,356	.	.	.
2005	.	7,447	.	.	.
2006	.	7,478	.	.	.
2007	.	7,584	.	.	.
2008	.	7,855	.	.	.
2009	.	7,941	.	.	.
2010	.	8,028	.	.	.
2011	.	8,213	.	.	.
2012	.	8,155	.	.	.
2013	.	7,949	.	.	.
2014	.	7,985	.	.	.
2015	.	7,040	.	.	.
2016	.	7,133	.	.	.
2020	36	6,573	.	19	.

County: county value. Kansas: state value. County Rank: highest county value ranked #1. (\$000): thousands of dollars. Nonmetro Kansas: Kansas total less Metropolitan Areas as defined by the Office of Management and Budget (OMB; released 3/6/2020). Per 1000: For nonmoney amounts, Per 1000=(county value / county population for the same year as the data) x 1000. \$ Per capita=(county value / county population for the same year as the data). Value= . indicates missing or suppressed data or value not calculated.

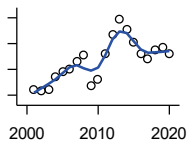
Employment

**BEA EMPLOYMENT:
CONSTRUCTION**



U.S. Bureau of Economic Analysis,
Regional Economic Information System
(REIS)

Year	County	State of Kansas	Non Metro Kansas	County Rank	Per 1000 or \$ Per Capita
2001	267	92,647	27,972	47	.
2002	264	90,370	.	44	.
2003	288	91,725	26,681	44	.
2004	288	93,271	.	43	.
2005	327	94,836	.	38	.
2006	323	97,449	.	39	.
2007	565	99,119	29,179	29	.
2008	396	97,741	.	36	.
2009	349	90,165	28,077	41	.
2010	328	84,708	26,402	39	.
2011	320	83,332	25,999	40	.
2012	315	85,966	.	41	.
2013	338	88,094	.	41	.
2014	353	91,143	.	39	.
2015	333	91,458	27,583	40	.
2016	331	93,539	27,151	42	.
2017	324	92,046	25,579	42	.
2018	333	92,985	25,530	39	.
2019	314	94,858	25,701	40	.
2020	335	94,186	26,085	39	.



**BEA EMPLOYMENT:
MANUFACTURING**

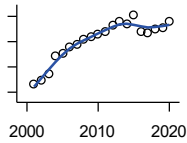
U.S. Bureau of Economic Analysis,
Regional Economic Information System
(REIS)

Year	County	State of Kansas	Non Metro Kansas	County Rank	Per 1000 or \$ Per Capita
2001	948	199,980	73,170	30	.
2002	934	188,905	70,691	31	.
2003	948	179,013	68,418	29	.
2004	1,040	181,738	69,669	29	.
2005	1,083	185,459	71,072	30	.
2006	1,101	188,047	71,704	29	.
2007	1,161	192,930	73,488	29	.
2008	1,214	193,116	72,235	30	.
2009	972	173,854	64,961	29	.
2010	1,021	166,000	62,884	28	.
2011	1,220	167,302	64,361	23	.
2012	1,373	169,308	65,944	23	.
2013	1,487	170,113	67,251	21	.
2014	1,413	169,307	68,299	24	.
2015	1,309	168,324	66,978	23	.
2016	1,220	167,723	65,796	25	.
2017	1,178	168,438	66,795	28	.
2018	1,248	171,778	68,181	27	.
2019	1,271	173,605	67,879	26	.
2020	1,219	165,228	65,658	26	.

County: county value. Kansas: state value. County Rank: highest county value ranked #1. (\$000): thousands of dollars. Nonmetro Kansas: Kansas total less Metropolitan Areas as defined by the Office of Management and Budget (OMB; released 3/6/2020). Per 1000: For nonmoney amounts, Per 1000=(county value / county population for the same year as the data) x 1000. \$ Per capita=(county value / county population for the same year as the data). Value= . indicates missing or suppressed data or value not calculated.

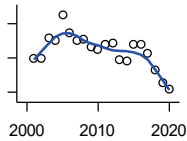
Employment

BEA EMPLOYMENT: WHOLESALE TRADE



U.S. Bureau of Economic Analysis,
Regional Economic Information System
(REIS)

Year	County	State of Kansas	Non Metro Kansas	County Rank	Per 1000 or \$ Per Capita
2001	215	65,698	.	34	.
2002	223	65,408	.	31	.
2003	236	63,504	.	27	.
2004	271	64,434	.	26	.
2005	278	64,587	.	24	.
2006	290	64,743	.	25	.
2007	295	65,993	.	25	.
2008	304	67,693	.	23	.
2009	311	65,954	.	23	.
2010	315	64,376	.	21	.
2011	320	64,712	.	24	.
2012	332	63,973	.	22	.
2013	339	64,999	.	20	.
2014	335	69,295	.	21	.
2015	353	68,444	.	19	.
2016	319	64,843	.	22	.
2017	318	65,014	.	21	.
2018	326	64,745	.	21	.
2019	328	63,324	.	20	.
2020	341	60,844	.	20	.



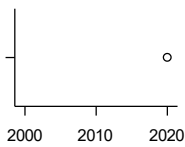
BEA EMPLOYMENT: RETAIL TRADE

U.S. Bureau of Economic Analysis,
Regional Economic Information System
(REIS)

Year	County	State of Kansas	Non Metro Kansas	County Rank	Per 1000 or \$ Per Capita
2001	800	198,069	.	35	.
2002	797	196,112	.	36	.
2003	859	194,545	64,173	32	.
2004	852	192,957	63,265	33	.
2005	926	191,656	62,506	31	.
2006	875	190,391	62,082	32	.
2007	851	190,643	61,716	32	.
2008	856	185,907	59,783	32	.
2009	834	181,262	58,714	34	.
2010	823	177,858	57,470	33	.
2011	840	180,548	57,734	33	.
2012	845	180,596	57,349	31	.
2013	795	183,245	57,556	32	.
2014	792	185,899	57,855	33	.
2015	840	188,421	58,516	33	.
2016	838	188,505	57,864	32	.
2017	812	186,633	56,715	33	.
2018	765	183,323	.	32	.
2019	726	177,240	53,427	33	.
2020	708	171,777	52,563	33	.

County: county value. Kansas: state value. County Rank: highest county value ranked #1. (\$000): thousands of dollars. Nonmetro Kansas: Kansas total less Metropolitan Areas as defined by the Office of Management and Budget (OMB; released 3/6/2020). Per 1000: For nonmoney amounts, Per 1000=(county value / county population for the same year as the data) x 1000. \$ Per capita=(county value / county population for the same year as the data). Value= . indicates missing or suppressed data or value not calculated.

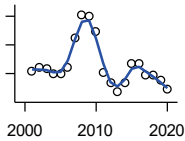
Employment



**BEA EMPLOYMENT:
TRANSPORTATION AND
WAREHOUSING**

U.S. Bureau of Economic Analysis,
Regional Economic Information System
(REIS)

Year	County	State of Kansas	Non Metro Kansas	County Rank	Per 1000 or \$ Per Capita
2001	.	56,302	.	.	.
2002	.	55,319	.	.	.
2003	.	55,509	.	.	.
2004	.	55,479	.	.	.
2005	.	56,287	.	.	.
2006	.	57,506	.	.	.
2007	.	59,277	.	.	.
2008	.	58,725	.	.	.
2009	.	56,238	.	.	.
2010	.	55,179	.	.	.
2011	.	57,449	.	.	.
2012	.	59,756	.	.	.
2013	.	59,780	.	.	.
2014	.	60,565	.	.	.
2015	.	63,256	.	.	.
2016	.	65,705	.	.	.
2020	311	80,543	.	24	.



BEA EMPLOYMENT: INFORMATION

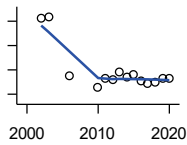
U.S. Bureau of Economic Analysis,
Regional Economic Information System
(REIS)

Year	County	State of Kansas	Non Metro Kansas	County Rank	Per 1000 or \$ Per Capita
2001	122	54,895	.	27	.
2002	124	50,728	.	21	.
2003	123	48,328	6,860	26	.
2004	120	45,617	.	28	.
2005	120	43,840	.	27	.
2006	124	43,925	.	23	.
2007	145	45,115	.	22	.
2008	161	42,958	.	18	.
2009	160	38,677	.	19	.
2010	149	33,432	.	19	.
2011	121	32,160	.	22	.
2012	114	31,829	.	23	.
2013	107	31,737	.	23	.
2014	114	32,316	.	21	.
2015	127	25,282	.	19	.
2016	127	24,998	.	18	.
2017	119	24,004	.	18	.
2018	119	23,165	.	18	.
2019	115	22,078	.	17	.
2020	109	20,810	.	17	.

County: county value. Kansas: state value. County Rank: highest county value ranked #1. (\$000): thousands of dollars. Nonmetro Kansas: Kansas total less Metropolitan Areas as defined by the Office of Management and Budget (OMB; released 3/6/2020). Per 1000: For nonmoney amounts, Per 1000=(county value / county population for the same year as the data) x 1000. \$ Per capita=(county value / county population for the same year as the data). Value= . indicates missing or suppressed data or value not calculated.

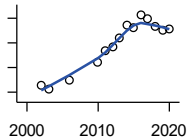
Employment

BEA EMPLOYMENT: FINANCE AND INSURANCE



U.S. Bureau of Economic Analysis,
Regional Economic Information System
(REIS)

Year	County	State of Kansas	Non Metro Kansas	County Rank	Per 1000 or \$ Per Capita
2001	.	76,118	.	.	.
2002	610	78,206	.	17	.
2003	618	78,441	.	15	.
2004	.	78,350	.	.	.
2005	.	78,952	.	.	.
2006	376	80,900	.	27	.
2007	.	86,094	.	.	.
2008	.	89,590	.	.	.
2009	.	93,573	.	.	.
2010	330	92,428	.	30	.
2011	364	99,495	.	30	.
2012	360	98,640	.	30	.
2013	391	99,998	.	29	.
2014	370	98,209	.	30	.
2015	379	100,534	.	29	.
2016	356	102,699	.	30	.
2017	344	101,563	.	30	.
2018	347	102,816	.	30	.
2019	364	100,276	.	28	.
2020	364	101,626	.	29	.



BEA EMPLOYMENT: REAL ESTATE, RENTAL, AND LEASING

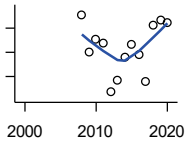
U.S. Bureau of Economic Analysis,
Regional Economic Information System
(REIS)

Year	County	State of Kansas	Non Metro Kansas	County Rank	Per 1000 or \$ Per Capita
2001	.	45,237	.	.	.
2002	64	44,970	.	50	.
2003	57	47,095	.	53	.
2004	.	50,181	.	.	.
2005	.	53,335	.	.	.
2006	74	55,342	.	46	.
2007	.	57,694	.	.	.
2008	.	57,933	.	.	.
2009	.	57,132	.	.	.
2010	112	59,578	.	43	.
2011	134	61,821	.	39	.
2012	141	60,432	.	38	.
2013	159	62,134	.	36	.
2014	186	64,705	.	34	.
2015	182	66,604	.	34	.
2016	207	68,395	.	30	.
2017	199	70,304	.	34	.
2018	184	72,631	.	36	.
2019	175	69,119	.	34	.
2020	177	68,452	.	34	.

County: county value. Kansas: state value. County Rank: highest county value ranked #1. (\$000): thousands of dollars. Nonmetro Kansas: Kansas total less Metropolitan Areas as defined by the Office of Management and Budget (OMB; released 3/6/2020). Per 1000: For nonmoney amounts, Per 1000=(county value / county population for the same year as the data) x 1000. \$ Per capita=(county value / county population for the same year as the data). Value= . indicates missing or suppressed data or value not calculated.

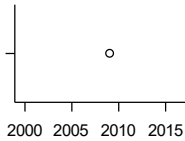
Employment

BEA EMPLOYMENT: PROFESSIONAL AND TECHNICAL SERVICES



U.S. Bureau of Economic Analysis,
Regional Economic Information System
(REIS)

Year	County	State of Kansas	Non Metro Kansas	County Rank	Per 1000 or \$ Per Capita
2001	.	81,396	.	.	.
2002	.	80,684	.	.	.
2003	.	80,311	.	.	.
2004	.	85,550	.	.	.
2005	.	85,003	.	.	.
2006	.	87,381	.	.	.
2007	.	92,717	.	.	.
2008	271	95,362	.	30	.
2009	240	93,232	.	28	.
2010	251	93,037	.	29	.
2011	248	93,237	.	28	.
2012	207	95,360	.	33	.
2013	217	100,795	.	33	.
2014	236	102,210	.	31	.
2015	247	105,625	.	29	.
2016	238	108,059	.	28	.
2017	216	109,041	.	28	.
2018	262	110,513	.	25	.
2019	267	109,637	.	23	.
2020	265	108,634	.	23	.



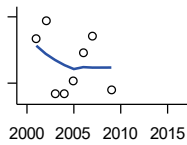
BEA EMPLOYMENT: MANAGEMENT OF COMPANIES AND ENTERPRISES

U.S. Bureau of Economic Analysis,
Regional Economic Information System
(REIS)

Year	County	State of Kansas	Non Metro Kansas	County Rank	Per 1000 or \$ Per Capita
2001	.	13,832	.	.	.
2002	.	12,576	.	.	.
2003	.	11,135	.	.	.
2004	.	10,614	.	.	.
2005	.	11,811	.	.	.
2006	.	13,061	.	.	.
2007	.	13,398	.	.	.
2008	.	15,234	.	.	.
2009	0	14,849	.	75	.
2010	.	16,579	.	.	.
2011	.	15,343	.	.	.
2012	.	15,075	.	.	.
2013	.	16,667	.	.	.
2014	.	20,441	.	.	.
2015	.	29,604	.	.	.
2016	.	27,824	.	.	.

County: county value. Kansas: state value. County Rank: highest county value ranked #1. (\$000): thousands of dollars. Nonmetro Kansas: Kansas total less Metropolitan Areas as defined by the Office of Management and Budget (OMB; released 3/6/2020). Per 1000: For nonmoney amounts, Per 1000=(county value / county population for the same year as the data) x 1000. \$ Per capita=(county value / county population for the same year as the data). Value= . indicates missing or suppressed data or value not calculated.

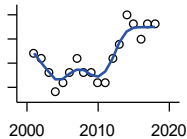
Employment



**BEA EMPLOYMENT:
ADMINISTRATIVE AND WASTE
SERVICES**

U.S. Bureau of Economic Analysis,
Regional Economic Information System
(REIS)

Year	County	State of Kansas	Non Metro Kansas	County Rank	Per 1000 or \$ Per Capita
2001	240	81,573	.	27	.
2002	248	82,992	.	26	.
2003	215	81,298	.	25	.
2004	215	85,721	.	28	.
2005	221	89,933	.	26	.
2006	234	93,688	.	27	.
2007	241	98,865	.	27	.
2008	.	97,440	.	.	.
2009	217	92,455	.	32	.
2010	.	93,675	.	.	.
2011	.	97,969	.	.	.
2012	.	100,490	.	.	.
2013	.	104,680	.	.	.
2014	.	107,218	18,836	.	.
2015	.	103,436	18,767	.	.
2016	.	103,233	18,428	.	.



**BEA EMPLOYMENT: EDUCATIONAL
SERVICES**

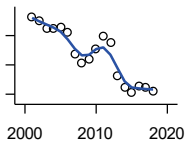
U.S. Bureau of Economic Analysis,
Regional Economic Information System
(REIS)

Year	County	State of Kansas	Non Metro Kansas	County Rank	Per 1000 or \$ Per Capita
2001	42	21,169	.	20	.
2002	41	22,173	.	21	.
2003	38	22,651	.	21	.
2004	34	21,601	.	25	.
2005	36	22,177	.	19	.
2006	38	22,438	.	17	.
2007	41	23,647	.	17	.
2008	38	24,653	.	20	.
2009	38	25,120	.	18	.
2010	36	26,071	.	20	.
2011	36	26,080	.	20	.
2012	41	26,625	.	19	.
2013	44	27,508	.	19	.
2014	50	28,708	.	20	.
2015	48	28,794	.	19	.
2016	45	27,996	.	23	.
2017	48	28,459	.	20	.
2018	48	28,560	.	20	.

County: county value. Kansas: state value. County Rank: highest county value ranked #1. (\$000): thousands of dollars. Nonmetro Kansas: Kansas total less Metropolitan Areas as defined by the Office of Management and Budget (OMB; released 3/6/2020). Per 1000: For nonmoney amounts, Per 1000=(county value / county population for the same year as the data) x 1000. \$ Per capita=(county value / county population for the same year as the data). Value= . indicates missing or suppressed data or value not calculated.

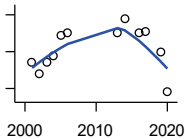
Employment

BEA EMPLOYMENT: HEALTH CARE AND SOCIAL ASSISTANCE



U.S. Bureau of Economic Analysis, Regional Economic Information System (REIS)

Year	County	State of Kansas	Non Metro Kansas	County Rank	Per 1000 or \$ Per Capita
2001	682	165,415	.	20	.
2002	676	168,198	.	21	.
2003	663	169,654	.	23	.
2004	662	172,796	.	24	.
2005	665	173,949	.	20	.
2006	655	176,919	.	19	.
2007	618	182,160	.	21	.
2008	603	186,051	.	22	.
2009	610	188,499	.	20	.
2010	627	188,383	.	21	.
2011	649	190,736	.	22	.
2012	638	192,991	.	23	.
2013	581	193,687	.	25	.
2014	561	194,632	.	26	.
2015	552	199,724	.	24	.
2016	565	201,830	.	25	.
2017	561	201,910	.	22	.
2018	556	204,011	.	26	.



BEA EMPLOYMENT: ARTS, ENTERTAINMENT, AND RECREATION

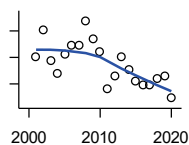
U.S. Bureau of Economic Analysis, Regional Economic Information System (REIS)

Year	County	State of Kansas	Non Metro Kansas	County Rank	Per 1000 or \$ Per Capita
2001	64	25,012	.	32	.
2002	58	25,668	.	34	.
2003	64	24,116	.	33	.
2004	68	25,355	.	34	.
2005	79	26,067	.	34	.
2006	80	26,505	.	31	.
2007	.	27,489	.	.	.
2008	.	27,501	.	.	.
2009	.	27,203	.	.	.
2010	.	27,479	.	.	.
2011	.	28,487	.	.	.
2012	.	30,729	.	.	.
2013	80	31,068	.	34	.
2014	88	32,154	.	29	.
2015	.	31,169	.	.	.
2016	80	32,373	.	32	.
2017	81	33,213	.	29	.
2019	70	33,082	.	33	.
2020	48	26,644	.	34	.

County: county value. Kansas: state value. County Rank: highest county value ranked #1. (\$000): thousands of dollars. Nonmetro Kansas: Kansas total less Metropolitan Areas as defined by the Office of Management and Budget (OMB; released 3/6/2020). Per 1000: For nonmoney amounts, Per 1000=(county value / county population for the same year as the data) x 1000. \$ Per capita=(county value / county population for the same year as the data). Value= . indicates missing or suppressed data or value not calculated.

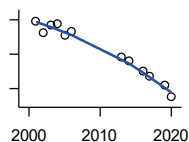
Employment

BEA EMPLOYMENT: GOVERNMENT AND GOVERNMENT ENTERPRISES



U.S. Bureau of Economic Analysis, Regional Economic Information System (REIS)

Year	County	State of Kansas	Non Metro Kansas	County Rank	Per 1000 or \$ Per Capita
2001	952	282,293	102,993	48	.
2002	1,002	281,427	103,581	48	.
2003	943	282,459	103,389	51	.
2004	921	283,877	103,946	53	.
2005	957	282,798	103,194	50	.
2006	974	288,372	104,103	51	.
2007	974	294,413	104,598	50	.
2008	1,019	298,580	104,718	47	.
2009	984	300,422	104,081	51	.
2010	961	303,875	103,382	53	.
2011	891	299,952	101,535	55	.
2012	916	298,068	101,180	52	.
2013	950	297,689	101,232	50	.
2014	926	296,956	100,634	51	.
2015	905	295,799	99,719	51	.
2016	898	291,536	98,520	51	.
2017	898	295,748	99,542	50	.
2018	909	298,105	99,499	50	.
2019	915	302,017	100,227	50	.
2020	873	292,583	96,477	50	.



BEA EMPLOYMENT: ACCOMMODATION AND FOOD SERVICES

U.S. Bureau of Economic Analysis, Regional Economic Information System (REIS)

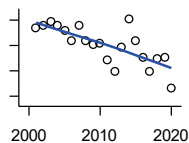
Year	County	State of Kansas	Non Metro Kansas	County Rank	Per 1000 or \$ Per Capita
2001	339	103,353	.	34	.
2002	325	103,692	.	36	.
2003	334	105,138	.	34	.
2004	336	106,694	.	36	.
2005	322	107,303	.	38	.
2006	327	109,888	.	41	.
2007	.	110,863	.	.	.
2008	.	111,092	.	.	.
2009	.	109,353	.	.	.
2010	.	108,628	.	.	.
2011	.	110,514	.	.	.
2012	.	112,574	.	.	.
2013	297	114,102	.	34	.
2014	292	115,768	.	36	.
2015	.	118,503	.	.	.
2016	280	119,764	.	34	.
2017	274	121,181	.	34	.
2019	264	122,819	.	36	.
2020	250	106,561	.	34	.

County: county value. Kansas: state value. County Rank: highest county value ranked #1. (\$000): thousands of dollars. Nonmetro Kansas: Kansas total less Metropolitan Areas as defined by the Office of Management and Budget (OMB; released 3/6/2020). Per 1000: For nonmoney amounts, Per 1000=(county value / county population for the same year as the data) x 1000. \$ Per capita=(county value / county population for the same year as the data). Value= . indicates missing or suppressed data or value not calculated.

Employment

BEA EMPLOYMENT: OTHER SERVICES, EXCEPT PUBLIC ADMINISTRATION

U.S. Bureau of Economic Analysis, Regional Economic Information System (REIS)

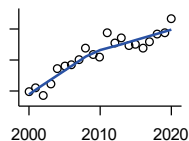


Year	County	State of Kansas	Non Metro Kansas	County Rank	Per 1000 or \$ Per Capita
2001	394	92,176	.	36	.
2002	396	95,350	.	36	.
2003	399	95,821	32,629	36	.
2004	396	95,610	.	37	.
2005	392	95,930	32,555	37	.
2006	384	96,413	.	35	.
2007	396	98,444	.	34	.
2008	384	96,705	.	34	.
2009	381	95,534	.	33	.
2010	382	93,302	.	32	.
2011	369	94,865	.	33	.
2012	360	94,977	.	36	.
2013	379	95,471	.	36	.
2014	401	97,806	.	34	.
2015	384	98,041	.	34	.
2016	371	97,219	.	35	.
2017	360	96,568	.	35	.
2018	370	98,645	.	34	.
2019	371	98,638	.	34	.
2020	346	92,245	.	34	.

Income

BEA PER CAPITA PERSONAL INCOME (\$)

U.S. Bureau of Economic Analysis, Regional Economic Information System (REIS)

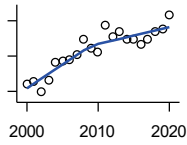


Year	County	State of Kansas	Non Metro Kansas	County Rank	Per 1000 or \$ Per Capita
2000	24,865	28,253	23,116	37	.
2001	25,920	29,112	24,576	41	.
2002	23,397	29,248	24,314	69	.
2003	27,066	30,074	26,017	46	.
2004	32,249	30,843	26,583	5	.
2005	32,890	32,545	28,356	19	.
2006	33,507	35,690	29,782	20	.
2007	35,008	38,057	32,034	35	.
2008	38,918	41,257	35,211	35	.
2009	36,664	39,431	33,876	42	.
2010	35,842	39,960	35,795	60	.
2011	43,668	43,015	39,041	45	.
2012	40,395	45,294	39,660	58	.
2013	42,044	46,174	41,747	60	.
2014	39,826	47,013	41,042	67	.
2015	40,268	47,332	40,638	58	.
2016	38,904	47,326	40,797	73	.
2017	41,053	48,756	41,314	59	.
2018	43,181	50,811	43,283	61	.
2019	43,858	52,820	44,491	61	.
2020	48,358	55,677	48,415	58	.

County: county value. Kansas: state value. County Rank: highest county value ranked #1. (\$000): thousands of dollars. Nonmetro Kansas: Kansas total less Metropolitan Areas as defined by the Office of Management and Budget (OMB; released 3/6/2020). Per 1000: For nonmoney amounts, Per 1000=(county value / county population for the same year as the data) x 1000. \$ Per capita=(county value / county population for the same year as the data). Value= . indicates missing or suppressed data or value not calculated.

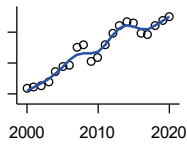
Income

**SOURCES OF PERSONAL INCOME:
TOTAL PERSONAL INCOME (\$000)**



U.S. Bureau of Economic Analysis,
Regional Economic Information System
(REIS)

Year	County	State of Kansas	Non Metro Kansas	County Rank	Per 1000 or \$ Per Capita
2000	271,852	76,105,125	22,273,838	37	24,792.7
2001	279,706	78,664,651	23,411,174	38	25,920.3
2002	247,654	79,365,190	23,000,314	40	23,396.7
2003	282,866	81,890,340	24,494,191	38	27,065.9
2004	332,555	84,335,940	24,924,467	38	32,249.3
2005	337,778	89,346,228	26,452,291	38	32,889.8
2006	340,798	98,610,188	27,661,596	38	33,506.8
2007	355,329	105,943,199	29,715,946	38	35,007.8
2008	395,949	115,852,478	32,614,565	38	38,917.7
2009	371,081	111,697,350	31,394,702	40	36,664.5
2010	362,433	114,239,828	33,291,419	41	35,824.2
2011	436,029	123,558,772	36,221,488	38	43,677.2
2012	405,042	130,948,127	36,696,759	42	40,399.2
2013	419,390	133,979,908	38,513,959	43	42,052.5
2014	396,150	136,878,718	37,680,598	44	39,834.1
2015	396,557	138,336,768	37,081,851	43	40,280.0
2016	381,454	138,533,890	36,930,885	44	38,967.6
2017	398,095	142,729,689	37,104,963	42	41,095.8
2018	419,634	148,955,739	38,589,364	42	43,194.4
2019	425,026	154,961,001	39,424,148	42	43,785.5
2020	466,753	163,462,179	42,618,591	40	46,498.6



**SOURCES OF PERSONAL INCOME:
WAGES AND SALARIES (\$000)**

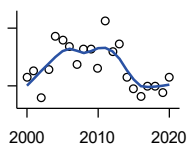
U.S. Bureau of Economic Analysis,
Regional Economic Information System
(REIS)

Year	County	State of Kansas	Non Metro Kansas	County Rank	Per 1000 or \$ Per Capita
2000	126,509	41,766,878	10,254,250	35	11,537.5
2001	128,101	43,269,734	10,518,206	35	11,871.1
2002	130,548	43,875,159	10,696,876	35	12,333.3
2003	136,216	44,488,560	10,894,971	35	13,033.8
2004	148,875	46,702,068	11,333,617	34	14,437.1
2005	155,001	48,537,956	11,614,130	35	15,092.6
2006	157,229	52,083,584	12,299,340	35	15,458.6
2007	179,804	55,442,368	13,093,908	34	17,714.7
2008	183,689	57,623,385	13,647,143	35	18,054.7
2009	161,435	55,605,578	13,199,674	36	15,950.5
2010	166,633	56,089,711	13,345,291	36	16,470.6
2011	183,748	58,104,706	13,856,458	35	18,406.1
2012	199,320	60,616,457	14,473,599	34	19,880.3
2013	208,221	61,872,023	14,781,792	34	20,878.5
2014	213,257	64,457,652	15,385,500	34	21,443.6
2015	212,305	66,729,598	15,454,485	34	21,564.8
2016	198,296	67,253,399	15,422,058	37	20,257.0
2017	196,953	68,830,861	15,731,853	37	20,331.7
2018	208,615	71,580,544	16,311,725	37	21,473.5
2019	215,996	74,404,771	16,882,299	36	22,251.6
2020	220,301	75,798,310	17,251,300	37	21,946.7

County: county value. Kansas: state value. County Rank: highest county value ranked #1. (\$000): thousands of dollars. Nonmetro Kansas: Kansas total less Metropolitan Areas as defined by the Office of Management and Budget (OMB; released 3/6/2020). Per 1000: For nonmoney amounts, Per 1000=(county value / county population for the same year as the data) x 1000. \$ Per capita=(county value / county population for the same year as the data). Value= . indicates missing or suppressed data or value not calculated.

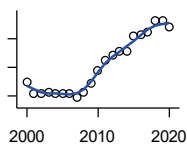
Income

**SOURCES OF PERSONAL INCOME:
PROPRIETORS-FARM (\$000)**



U.S. Bureau of Economic Analysis,
Regional Economic Information System
(REIS)

Year	County	State of Kansas	Non Metro Kansas	County Rank	Per 1000 or \$ Per Capita
2000	9,204	668,539	673,707	33	839.4
2001	15,309	779,473	769,336	18	1,418.7
2002	-12,843	145,064	187,033	105	-1,213.3
2003	16,437	1,281,076	1,195,298	26	1,572.8
2004	51,643	1,149,425	938,524	1	5,008.0
2005	47,739	1,609,604	1,469,139	2	4,648.4
2006	41,515	766,047	663,735	2	4,081.7
2007	22,295	1,131,607	1,040,350	11	2,196.6
2008	37,695	1,582,092	1,404,900	4	3,705.0
2009	38,309	1,585,995	1,390,349	6	3,785.1
2010	18,895	2,149,482	2,029,067	47	1,867.6
2011	67,605	3,188,519	2,989,880	10	6,772.0
2012	35,327	2,519,555	2,296,875	25	3,523.5
2013	43,439	4,499,190	4,158,419	40	4,355.7
2014	8,803	2,231,181	2,157,992	63	885.2
2015	-3,237	1,300,733	1,294,370	96	-328.8
2016	-10,542	1,577,060	1,564,511	105	-1,076.9
2017	-879	838,480	838,290	71	-90.7
2018	168	1,050,662	971,690	89	17.3
2019	-7,681	998,038	878,247	105	-791.3
2020	9,383	2,151,349	1,887,881	87	934.7



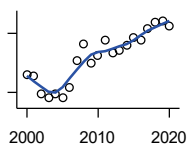
**SOURCES OF PERSONAL INCOME:
PROPRIETORS-NONFARM (\$000)**

U.S. Bureau of Economic Analysis,
Regional Economic Information System
(REIS)

Year	County	State of Kansas	Non Metro Kansas	County Rank	Per 1000 or \$ Per Capita
2000	14,814	4,580,476	1,493,470	38	1,351.0
2001	10,643	4,510,530	1,855,621	70	986.3
2002	10,852	5,036,100	1,966,784	72	1,025.2
2003	11,074	4,719,377	1,916,735	67	1,059.6
2004	10,796	4,003,922	2,073,898	68	1,046.9
2005	10,741	4,455,294	2,200,971	71	1,045.9
2006	10,994	7,343,524	2,694,895	79	1,080.9
2007	9,319	7,280,197	2,436,574	80	918.1
2008	11,442	9,255,953	2,971,923	75	1,124.6
2009	14,328	9,323,551	2,858,848	71	1,415.7
2010	18,780	9,658,261	3,498,040	66	1,856.3
2011	22,260	12,196,566	4,186,007	66	2,229.8
2012	24,393	15,773,140	4,446,004	63	2,433.0
2013	25,590	16,441,660	4,492,127	61	2,565.9
2014	25,629	15,954,254	4,455,081	62	2,577.1
2015	30,816	15,536,116	4,386,172	57	3,130.1
2016	31,228	14,075,310	3,783,829	51	3,190.1
2017	32,234	15,371,957	3,908,254	47	3,327.6
2018	36,362	15,716,877	4,238,775	45	3,742.9
2019	36,380	16,705,488	3,921,051	44	3,747.8
2020	34,131	16,718,952	3,823,329	45	3,400.2

County: county value. Kansas: state value. County Rank: highest county value ranked #1. (\$000): thousands of dollars. Nonmetro Kansas: Kansas total less Metropolitan Areas as defined by the Office of Management and Budget (OMB; released 3/6/2020). Per 1000: For nonmoney amounts, Per 1000=(county value / county population for the same year as the data) x 1000. \$ Per capita=(county value / county population for the same year as the data). Value= . indicates missing or suppressed data or value not calculated.

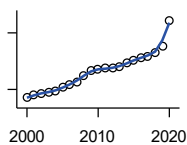
Income



**SOURCES OF PERSONAL INCOME:
DIVIDENDS,INTEREST,RENT(\$000)**

U.S. Bureau of Economic Analysis,
Regional Economic Information System
(REIS)

Year	County	State of Kansas	Non Metro Kansas	County Rank	Per 1000 or \$ Per Capita
2000	68,936	15,916,201	4,736,921	36	6,286.9
2001	68,574	15,770,830	4,699,417	36	6,354.7
2002	59,225	15,111,563	4,316,887	37	5,595.2
2003	57,040	15,370,764	4,360,311	38	5,457.9
2004	59,203	15,820,469	4,251,925	37	5,741.2
2005	57,241	17,147,069	4,485,387	38	5,573.6
2006	62,345	20,117,848	4,945,184	37	6,129.7
2007	76,248	22,269,186	5,526,219	35	7,512.1
2008	84,461	24,972,485	6,180,979	34	8,301.7
2009	74,761	21,453,879	5,308,474	38	7,386.7
2010	78,522	20,861,351	5,414,285	34	7,761.4
2011	86,733	23,387,567	5,781,075	32	8,688.1
2012	79,915	25,689,368	6,389,505	39	7,970.8
2013	81,505	24,832,212	5,984,811	38	8,172.6
2014	83,982	27,412,684	6,403,356	37	8,444.6
2015	88,088	27,244,414	6,423,685	36	8,947.5
2016	86,431	27,293,441	6,389,161	37	8,829.4
2017	92,386	28,385,472	6,700,156	36	9,537.1
2018	95,357	29,953,419	6,772,504	35	9,815.4
2019	96,356	30,820,276	6,957,987	37	9,926.4
2020	93,769	30,283,520	6,844,745	37	9,341.4



**SOURCES OF PERSONAL INCOME:
TRANSFER PAYMENTS (\$000)**

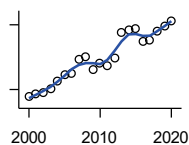
U.S. Bureau of Economic Analysis,
Regional Economic Information System
(REIS)

Year	County	State of Kansas	Non Metro Kansas	County Rank	Per 1000 or \$ Per Capita
2000	51,008	9,650,835	4,036,781	38	4,651.9
2001	54,140	10,549,124	4,355,457	38	5,017.1
2002	55,828	11,208,997	4,553,978	39	5,274.3
2003	57,407	11,709,049	4,702,911	41	5,493.0
2004	58,067	12,040,452	4,802,536	41	5,631.0
2005	61,898	12,696,735	5,059,314	41	6,027.1
2006	65,591	13,642,787	5,455,207	41	6,448.8
2007	68,226	14,686,821	5,775,024	41	6,721.8
2008	74,856	16,552,460	6,322,722	40	7,357.6
2009	80,503	18,025,603	6,790,962	40	7,954.1
2010	81,321	19,189,749	7,089,258	41	8,038.1
2011	82,137	19,625,770	7,255,825	42	8,227.7
2012	82,405	19,354,458	7,148,177	41	8,219.1
2013	84,465	19,639,358	7,185,636	40	8,469.4
2014	87,737	20,380,970	7,399,809	40	8,822.2
2015	90,566	21,116,856	7,623,577	40	9,199.2
2016	94,207	21,884,629	7,886,000	40	9,623.8
2017	95,469	22,559,744	8,062,517	40	9,855.4
2018	99,018	23,628,033	8,393,617	40	10,192.3
2019	106,309	25,050,174	8,845,371	40	10,951.8
2020	133,107	32,319,421	11,074,190	38	13,260.3

County: county value. Kansas: state value. County Rank: highest county value ranked #1. (\$000): thousands of dollars. Nonmetro Kansas: Kansas total less Metropolitan Areas as defined by the Office of Management and Budget (OMB; released 3/6/2020). Per 1000: For nonmoney amounts, Per 1000=(county value / county population for the same year as the data) x 1000. \$ Per capita=(county value / county population for the same year as the data). Value= . indicates missing or suppressed data or value not calculated.

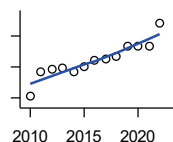
Income

**SOURCES OF PERSONAL INCOME:
LESS SOCIAL INSURANCE (\$000)**



U.S. Bureau of Economic Analysis,
Regional Economic Information System
(REIS)

Year	County	State of Kansas	Non Metro Kansas	County Rank	Per 1000 or \$ Per Capita
2000	23,273	6,655,813	1,663,044	34	2,122.5
2001	23,844	6,869,934	1,740,915	34	2,209.6
2002	24,136	7,008,361	1,778,636	34	2,280.2
2003	25,075	7,172,781	1,821,858	34	2,399.3
2004	27,080	7,556,560	1,904,014	34	2,626.1
2005	28,541	7,911,241	1,986,907	34	2,779.1
2006	28,685	8,406,937	2,090,313	34	2,820.3
2007	32,008	8,806,941	2,180,587	33	3,153.5
2008	32,477	9,207,010	2,299,399	33	3,192.2
2009	29,606	9,002,859	2,248,703	36	2,925.2
2010	31,238	9,235,760	2,321,191	35	3,087.7
2011	30,570	8,515,986	2,139,991	34	3,062.2
2012	32,321	8,816,128	2,195,919	33	3,223.7
2013	38,148	10,225,399	2,540,439	33	3,825.1
2014	38,823	10,609,601	2,635,009	34	3,903.8
2015	39,004	11,028,204	2,663,038	34	3,961.8
2016	36,034	10,915,915	2,604,579	34	3,681.1
2017	36,424	11,224,218	2,669,954	34	3,760.1
2018	38,576	11,749,229	2,797,106	34	3,970.8
2019	39,793	12,245,451	2,889,336	34	4,099.4
2020	40,913	12,715,152	3,027,656	34	4,075.8



HUD MEDIAN FAMILY INCOME

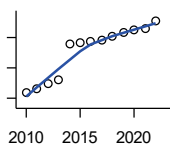
U.S. Department of Housing and Urban
Development (HUD)

Year	County	State of Kansas	Non Metro Kansas	County Rank	Per 1000 or \$ Per Capita
2010	50,500	63,100	.	73	.
2011	58,400	64,300	.	34	.
2012	59,200	65,200	.	34	.
2013	59,800	64,800	.	41	.
2014	58,400	64,400	.	44	.
2015	59,900	66,300	.	53	.
2016	62,200	66,700	.	32	.
2017	62,600	68,500	.	39	.
2018	63,200	73,100	.	52	.
2019	66,500	75,200	.	37	.
2020	66,600	76,500	.	50	.
2021	66,500	77,400	.	56	.
2022	74,100	87,800	.	47	.

County: county value. Kansas: state value. County Rank: highest county value ranked #1. (\$000): thousands of dollars. Nonmetro Kansas: Kansas total less Metropolitan Areas as defined by the Office of Management and Budget (OMB; released 3/6/2020). Per 1000: For nonmoney amounts, Per 1000=(county value / county population for the same year as the data) x 1000. \$ Per capita=(county value / county population for the same year as the data). Value= . indicates missing or suppressed data or value not calculated.

Income

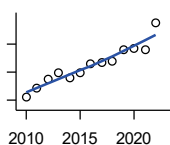
HUD 30% LOW-TO-MEDIUM INCOME (LMI) LIMIT - 4 PERSONS



U.S. Department of Housing and Urban Development (HUD)

Year	County	State of Kansas	Non Metro Kansas	County Rank	Per 1000 or \$ Per Capita
2010	15,850	.	.	105	.
2011	16,600	.	.	52	.
2012	17,450	.	.	42	.
2013	17,950	.	.	37	.
2014	23,850	.	.	105	.
2015	24,250	.	.	105	.
2016	24,300	.	.	105	.
2017	24,600	.	.	105	.
2018	25,100	21,950	.	105	.
2019	25,750	22,550	.	105	.
2020	26,200	22,950	.	105	.
2021	26,500	23,200	.	105	.
2022	27,750	25,950	.	105	.

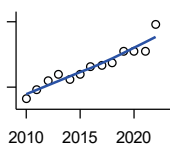
HUD 50% LOW-TO-MEDIUM INCOME (LMI) LIMIT - 4 PERSONS



U.S. Department of Housing and Urban Development (HUD)

Year	County	State of Kansas	Non Metro Kansas	County Rank	Per 1000 or \$ Per Capita
2010	26,400	.	.	105	.
2011	27,700	.	.	52	.
2012	29,050	.	.	42	.
2013	29,900	.	.	37	.
2014	29,200	.	.	41	.
2015	29,950	.	.	53	.
2016	31,100	.	.	33	.
2017	31,300	.	.	39	.
2018	31,600	36,550	.	52	.
2019	33,250	37,600	.	37	.
2020	33,300	38,250	.	50	.
2021	33,250	38,700	.	57	.
2022	37,050	43,300	.	46	.

HUD 80% LOW-TO-MEDIUM INCOME (LMI) LIMIT - 4 PERSONS



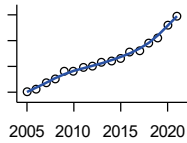
U.S. Department of Housing and Urban Development (HUD)

Year	County	State of Kansas	Non Metro Kansas	County Rank	Per 1000 or \$ Per Capita
2010	42,250	.	.	105	.
2011	44,300	.	.	52	.
2012	46,500	.	.	42	.
2013	47,850	.	.	37	.
2014	46,700	.	.	41	.
2015	47,900	.	.	53	.
2016	49,750	.	.	33	.
2017	50,100	.	.	39	.
2018	50,550	58,500	.	52	.
2019	53,200	60,150	.	37	.
2020	53,300	61,200	.	50	.
2021	53,200	61,900	.	57	.
2022	59,300	69,250	.	46	.

County: county value. Kansas: state value. County Rank: highest county value ranked #1. (\$000): thousands of dollars. Nonmetro Kansas: Kansas total less Metropolitan Areas as defined by the Office of Management and Budget (OMB; released 3/6/2020). Per 1000: For nonmoney amounts, Per 1000=(county value / county population for the same year as the data) x 1000. \$ Per capita=(county value / county population for the same year as the data). Value= . indicates missing or suppressed data or value not calculated.

Banking

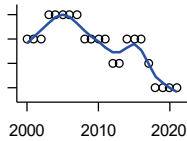
BANK DEPOSITS (1984-2004 in thousands; 2005- in millions)



Federal Deposit Insurance Corporation, Data Book, Operating Banks and Branches

Year	County	State of Kansas	Non Metro Kansas	County Rank	Per 1000 or \$ Per Capita
2005	354	48,304	17,000	26	34.5
2006	363	50,668	17,586	26	35.7
2007	388	54,057	18,517	26	38.2
2008	401	57,869	19,628	26	39.4
2009	431	57,763	20,031	22	42.6
2010	429	60,031	20,678	23	42.4
2011	446	61,094	21,347	25	44.7
2012	449	62,910	22,481	26	44.8
2013	465	64,547	22,795	26	46.6
2014	472	66,538	23,338	25	47.5
2015	483	68,160	23,367	26	49.1
2016	506	70,381	23,420	24	51.7
2017	510	73,329	23,928	24	52.6
2018	540	74,623	24,100	24	55.6
2019	562	76,436	24,488	23	57.9
2020	609	88,563	27,547	24	60.7
2021	647	97,055	30,122	24	64.8

NUMBER OF BANKS



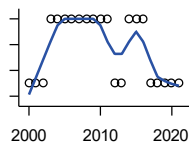
Federal Deposit Insurance Corporation, Data Book, Operating Banks and Branches

Year	County	State of Kansas	Non Metro Kansas	County Rank	Per 1000 or \$ Per Capita
2000	10	410	145	20	.
2001	10	410	136	22	.
2002	10	404	129	22	.
2003	11	397	121	16	.
2004	11	394	112	16	.
2005	11	388	101	15	.
2006	11	385	94	15	.
2007	11	382	91	16	.
2008	10	378	82	20	.
2009	10	374	79	20	.
2010	10	367	70	20	.
2011	10	359	61	20	.
2012	9	348	57	26	.
2013	9	332	45	26	.
2014	10	329	41	17	.
2015	10	320	31	16	.
2016	10	314	24	16	.
2017	9	301	13	23	.
2018	8	289	7	30	.
2019	8	279	3	29	.
2020	8	271	-1	28	.
2021	8	270	-6	28	.

County: county value. Kansas: state value. County Rank: highest county value ranked #1. (\$000): thousands of dollars. Nonmetro Kansas: Kansas total less Metropolitan Areas as defined by the Office of Management and Budget (OMB; released 3/6/2020). Per 1000: For nonmoney amounts, Per 1000=(county value / county population for the same year as the data) x 1000. \$ Per capita=(county value / county population for the same year as the data). Value= . indicates missing or suppressed data or value not calculated.

Banking

NUMBER OF BANKING OFFICES

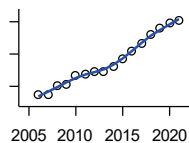


Federal Deposit Insurance Corporation, Data Book, Operating Banks and Branches

Year	County	State of Kansas	Non Metro Kansas	County Rank	Per 1000 or \$ Per Capita
2000	13	1,398	703	29	.
2001	13	1,424	708	28	.
2002	13	1,447	704	28	.
2003	14	1,461	708	27	.
2004	14	1,485	708	27	.
2005	14	1,505	711	28	.
2006	14	1,518	711	28	.
2007	14	1,543	717	28	.
2008	14	1,556	717	28	.
2009	14	1,569	716	28	.
2010	14	1,561	710	28	.
2011	14	1,559	707	28	.
2012	13	1,533	702	31	.
2013	13	1,518	696	31	.
2014	14	1,491	685	28	.
2015	14	1,472	675	27	.
2016	14	1,465	668	27	.
2017	13	1,452	666	30	.
2018	13	1,439	660	30	.
2019	13	1,439	663	29	.
2020	13	1,416	653	30	.
2021	13	1,392	641	29	.

Government

TANGIBLE ASSESSED VALUATION (KDoR, million\$; 2006-)



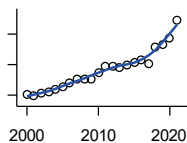
Kansas Department of Revenue, Division of Property Valuation, Statistical Report of Property Assessment and Taxation

Year	County	State of Kansas	Non Metro Kansas	County Rank	Per 1000 or \$ Per Capita
2006	87.3	28,964.3	10,316.9	49	8.6
2007	86.9	30,086.9	10,335.9	49	8.6
2008	101.0	31,000.3	10,856.9	48	9.9
2009	103.0	30,312.3	10,555.6	47	10.2
2010	117.8	29,450.2	10,158.7	41	11.6
2011	118.6	29,963.6	10,572.3	46	11.9
2012	122.3	30,382.9	10,876.2	45	12.2
2013	123.7	30,850.2	11,044.4	44	12.4
2014	130.0	31,783.0	11,388.9	43	13.1
2015	143.4	32,335.7	11,037.8	37	14.6
2016	154.9	33,156.3	10,889.6	34	15.8
2017	166.3	34,754.5	11,439.0	31	17.2
2018	180.6	36,566.1	11,907.1	32	18.6
2019	190.2	38,255.2	12,336.7	32	19.6
2020	197.6	39,333.9	12,219.3	32	19.7
2021	201.4	40,812.0	12,601.5	33	20.2

County: county value. Kansas: state value. County Rank: highest county value ranked #1. (\$000): thousands of dollars. Nonmetro Kansas: Kansas total less Metropolitan Areas as defined by the Office of Management and Budget (OMB; released 3/6/2020). Per 1000: For nonmoney amounts, Per 1000=(county value / county population for the same year as the data) x 1000. \$ Per capita=(county value / county population for the same year as the data). Value= . indicates missing or suppressed data or value not calculated.

Government

SALES TAX COLLECTIONS (\$)

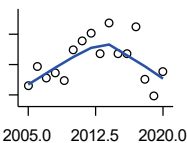


Kansas Department of Revenue. Use tax collections included beginning in calendar year 2018.

Year	County	State of Kansas	Non Metro Kansas	County Rank	Per 1000 or \$ Per Capita
2000	4,062,560	1,475,831,808	432,761,608	40	370,502.5
2001	3,882,655	1,481,026,688	426,316,284	40	359,804.9
2002	4,205,336	1,561,316,864	443,986,950	39	397,292.0
2003	4,458,034	1,626,782,976	461,658,700	39	426,565.3
2004	4,744,765	1,691,899,008	480,309,725	38	460,120.7
2005	5,117,026	1,744,980,352	497,494,867	38	498,249.9
2006	5,602,367	1,851,694,720	532,233,047	36	550,817.7
2007	6,112,238	1,917,546,752	559,319,583	35	602,190.9
2008	6,150,399	1,990,655,744	589,725,773	36	604,521.2
2009	6,072,276	1,866,223,078	548,627,132	36	599,968.0
2010	7,017,118	2,075,193,413	617,409,982	36	693,596.7
2011	7,694,199	2,347,193,367	702,671,534	36	770,730.1
2012	7,775,944	2,456,292,294	740,196,106	36	775,577.9
2013	7,656,665	2,489,204,048	746,226,565	37	767,739.4
2014	7,951,747	2,539,886,774	760,474,019	35	799,572.4
2015	8,309,326	2,642,374,740	750,090,163	35	844,014.9
2016	8,635,886	2,732,611,350	749,030,133	35	882,203.1
2017	8,136,717	2,726,104,521	744,246,491	35	839,962.6
2018	10,264,934	3,277,299,125	893,564,480	36	1,056,606.7
2019	10,593,115	3,395,631,405	939,607,762	37	1,091,286.2
2020	11,539,312	3,489,306,791	984,218,931	38	1,149,562.9
2021	13,860,692	3,981,293,227	1,098,391,422	37	1,388,986.1

Crime

CRIME INDEX OFFENSES



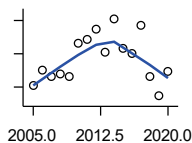
Kansas Bureau of Investigation, Note: Data are aggregated from reports by individual police departments and subject to be incomplete.

Year	County	State of Kansas	Non Metro Kansas	County Rank	Per 1000 or \$ Per Capita
2005	72	111,856	31,630	69	7.0
2006	97	110,032	.	60	9.5
2007	83	111,035	29,921	64	8.2
2008	89	93,996	27,342	61	8.7
2009	79	98,757	27,620	63	7.8
2010	119	98,354	26,909	51	11.8
2011	131	96,638	25,765	50	13.1
2012	142	98,914	26,963	47	14.2
2013	115	93,054	24,488	55	11.5
2014	155	86,323	23,341	45	15.6
2015	115	88,590	21,580	49	11.7
2016	114	90,589	21,565	47	11.6
2017	149	93,091	22,622	44	15.4
2018	80	92,062	20,325	56	8.2
2019	58	87,008	18,547	59	6.0
2020	91	87,346	17,762	52	9.1

County: county value. Kansas: state value. County Rank: highest county value ranked #1. (\$000): thousands of dollars. Nonmetro Kansas: Kansas total less Metropolitan Areas as defined by the Office of Management and Budget (OMB; released 3/6/2020). Per 1000: For nonmoney amounts, Per 1000=(county value / county population for the same year as the data) x 1000. \$ Per capita=(county value / county population for the same year as the data). Value= . indicates missing or suppressed data or value not calculated.

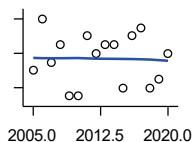
Crime

PROPERTY CRIMES



Kansas Bureau of Investigation, Note: Data are aggregated from reports by individual police departments and subject to be incomplete.

Year	County	State of Kansas	Non Metro Kansas	County Rank	Per 1000 or \$ Per Capita
2005	62	101,414	29,042	69	6.0
2006	81	99,110	.	62	8.0
2007	72	99,632	26,856	65	7.1
2008	76	83,964	24,367	61	7.5
2009	72	87,658	24,825	63	7.1
2010	112	87,926	24,133	49	11.1
2011	117	86,547	23,274	49	11.7
2012	130	88,707	24,220	47	13.0
2013	102	83,551	22,028	54	10.2
2014	142	76,794	20,858	45	14.3
2015	107	77,997	19,138	48	10.9
2016	100	79,549	19,207	49	10.2
2017	134	81,349	19,981	45	13.8
2018	72	79,695	17,769	57	7.4
2019	49	74,314	15,892	60	5.0
2020	79	73,450	15,100	53	7.9



VIOLENT CRIMES

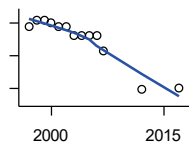
Kansas Bureau of Investigation, Note: Data are aggregated from reports by individual police departments and subject to be incomplete.

Year	County	State of Kansas	Non Metro Kansas	County Rank	Per 1000 or \$ Per Capita
2005	10	10,442	2,588	61	1.0
2006	16	10,922	.	51	1.6
2007	11	11,403	3,065	61	1.1
2008	13	10,032	2,975	60	1.3
2009	7	11,099	2,795	70	0.7
2010	7	10,428	2,776	68	0.7
2011	14	10,091	2,491	53	1.4
2012	12	10,207	2,743	56	1.2
2013	13	9,503	2,460	56	1.3
2014	13	9,529	2,483	53	1.3
2015	8	10,593	2,442	67	0.8
2016	14	11,040	2,358	44	1.4
2017	15	11,742	2,641	49	1.5
2018	8	12,367	2,556	61	0.8
2019	9	12,694	2,655	64	0.9
2020	12	13,896	2,662	62	1.2

County: county value. Kansas: state value. County Rank: highest county value ranked #1. (\$000): thousands of dollars. Nonmetro Kansas: Kansas total less Metropolitan Areas as defined by the Office of Management and Budget (OMB; released 3/6/2020). Per 1000: For nonmoney amounts, Per 1000=(county value / county population for the same year as the data) x 1000. \$ Per capita=(county value / county population for the same year as the data). Value= . indicates missing or suppressed data or value not calculated.

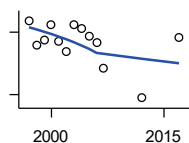
Agriculture

NUMBER OF FARMS



Kansas Agricultural Statistics, Kansas Farm Facts

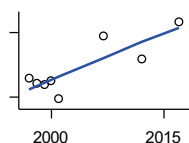
Year	County	State of Kansas	Non Metro Kansas	County Rank	Per 1000 or \$ Per Capita
1997	990	64,000	47,900	12	88.7
1998	1,010	65,000	48,850	12	91.5
1999	1,010	65,000	48,850	12	91.8
2000	1,000	64,000	48,030	12	91.2
2001	990	63,000	47,200	11	91.7
2002	990	63,000	47,200	11	93.5
2003	960	64,500	48,150	16	91.9
2004	960	64,500	48,150	16	93.1
2005	960	64,500	48,150	16	93.5
2006	960	64,000	47,650	16	94.4
2007	913	65,531	48,179	22	90.0
2012	796	61,773	45,655	26	79.4
2017	802	58,569	42,404	23	82.8



TOTAL ACRES HARVESTED

Kansas Agricultural Statistics, Kansas Farm Facts

Year	County	State of Kansas	Non Metro Kansas	County Rank	Per 1000 or \$ Per Capita
1997	350,960	22,846,000	19,430,580	10	31,431.1
1998	327,350	22,143,500	18,943,650	12	29,667.4
1999	332,120	21,708,900	18,581,750	8	30,179.0
2000	347,300	21,639,000	18,528,870	7	31,673.5
2001	331,800	21,847,900	18,689,750	8	30,747.8
2002	321,300	20,230,400	17,089,120	7	30,354.3
2003	346,900	21,827,700	18,661,920	7	33,193.0
2004	343,600	20,876,900	17,721,500	6	33,320.4
2005	336,400	21,936,500	18,807,930	8	32,755.6
2006	329,800	21,412,700	18,291,120	8	32,425.5
2007	305,707	19,886,655	17,164,743	9	30,118.9
2012	276,600	21,043,596	17,966,843	16	27,588.3
2017	335,229	21,837,465	18,543,057	7	34,606.1



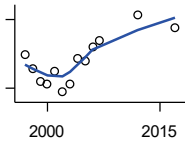
VALUE: LIVESTOCK AND POULTRY (\$000)

Kansas Agricultural Statistics, Kansas Farm Facts

Year	County	State of Kansas	Non Metro Kansas	County Rank	Per 1000 or \$ Per Capita
1997	19,272	2,806,445	2,500,305	53	1,726.0
1998	18,155	2,670,432	2,378,007	50	1,645.4
1999	17,827	2,849,061	2,554,528	51	1,619.9
2000	18,900	2,901,469	2,609,032	53	1,723.7
2001	14,524	2,693,274	2,437,187	64	1,345.9
2007	29,196	9,525,971	.	65	2,876.5
2012	23,817	11,476,571	10,883,216	73	2,375.5
2017	32,513	12,322,289	.	63	3,356.4

County: county value. Kansas: state value. County Rank: highest county value ranked #1. (\$000): thousands of dollars. Nonmetro Kansas: Kansas total less Metropolitan Areas as defined by the Office of Management and Budget (OMB; released 3/6/2020). Per 1000: For nonmoney amounts, Per 1000=(county value / county population for the same year as the data) x 1000. \$ Per capita=(county value / county population for the same year as the data). Value= . indicates missing or suppressed data or value not calculated.

Agriculture



VALUE:FIELD CROPS (\$000)
EXCLUDING GOVERNMENT
PROGRAM PAYMENTS

Kansas Agricultural Statistics, Kansas
Farm Facts

Year	County	State of Kansas	Non Metro Kansas	County Rank	Per 1000 or \$ Per Capita
1997	69,855	4,474,942	3,800,365	11	6,256.0
1998	56,699	3,594,319	3,124,409	12	5,138.6
1999	45,605	3,118,193	2,728,319	19	4,144.0
2000	43,806	2,915,660	2,540,052	19	3,995.1
2001	55,189	3,283,117	2,857,136	8	5,114.4
2002	36,459	3,011,855	2,560,580	28	3,444.4
2003	43,720	3,623,255	3,150,629	30	4,183.3
2004	65,993	3,445,688	2,896,603	7	6,399.6
2005	63,874	3,678,123	3,182,677	10	6,219.5
2006	75,905	4,308,716	3,684,132	9	7,462.9
2007	81,815	4,887,212	.	11	8,060.6
2012	104,099	6,983,993	6,044,551	21	10,382.9
2017	92,882	6,460,437	.	15	9,588.3

County: county value. Kansas: state value. County Rank: highest county value ranked #1. (\$000): thousands of dollars. Nonmetro Kansas: Kansas total less Metropolitan Areas as defined by the Office of Management and Budget (OMB; released 3/6/2020). Per 1000: For nonmoney amounts, Per 1000=(county value / county population for the same year as the data) x 1000. \$ Per capita=(county value / county population for the same year as the data). Value= . indicates missing or suppressed data or value not calculated.