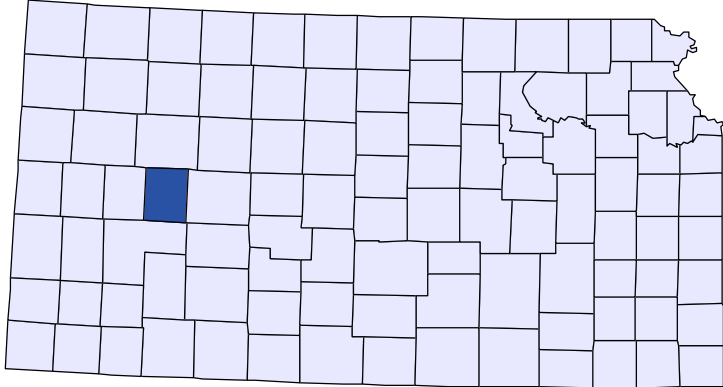




# Kansas County Profiles

## Lane County



The University  
of Kansas

Institute for Policy  
& Social Research

**KU** INSTITUTE FOR POLICY  
& SOCIAL RESEARCH  

---

The University of Kansas

1541 Lilac Lane, Rm. 607  
Blake Hall  
Lawrence, KS 66045-3129

## Foreword

The Kansas County Profile Report is published by the Institute for Policy & Social Research (IPSR) at the University of Kansas with support from the KU University Center project.\* Special thanks to Xanthippe Wedel, senior research data engineer, who compiles and updates the county profiles and Genna Hurd, associate researcher, who provides editorial review.

County reports can be generated for any county in Kansas by simply clicking on the county from the web site:

<https://ipsr.ku.edu/ksdata/kcced/profiles/>

The Kansas County Profile Report contains 12 categories of information: Population, Vital Statistics and Health, Housing, Education, Social Environment, Business, Employment, Income, Banking, Government, Crime, and Agriculture. For more information about Kansas, please refer to the Kansas Statistical Abstract, available online at:

<https://ipsr.ku.edu/ksdata/ksah/>

We are always looking for ways to improve the Kansas County Profile Report and we welcome your suggestions and comments. Please address any correspondence to the Institute for Policy & Social Research, The University of Kansas, 607 Blake Hall, 1541 Lilac Lane, Lawrence, Kansas 66045-3129, e-mail [ipsr@ku.edu](mailto:ipsr@ku.edu) or call 785-864-3701.

*\*The KU University Center is a collaborative effort led by the Institute for Policy & Social Research at the University of Kansas. This project is supported by the Economic Development Administration, U.S. Department of Commerce, through its University Center Program.*

*The mission of EDA is to lead the federal economic development agenda by promoting innovation and competitiveness, preparing American regions for growth and success in the worldwide economy.*

## Kansas County Profiles Table of Contents

<b>Population</b>	
Total Population (Decennial Census)	1
Estimated Population (Current Population Reports)	2
Urban Population	2
Rural Population	3
Net Migration (Decade Ending...)	3
Median Age	3
<b>Population (Age Groups)</b>	
Population Under 18 (Decennial Census)	3
Population Age 18 and Over (Decennial Census)	4
Population Age 65 and Over (Decennial Census)	4
Population Age 85 and Over (Decennial Census)	4
<b>Vital Statistics and Health</b>	
Live Births	5
Deaths	5
Marriages	6
Divorces and Annulments	6
Physicians: M.D. Physicians	7
Physicians: D.O. Physicians	7
Dentists	8
Number of Hospitals	8
Number of Hospital Beds	9
<b>Housing</b>	
Housing Units (Decennial Census)	9
Housing Units (Estimated)	10
Occupied Housing Units	10
Owner Occupied Housing Units	10
Renter Occupied Housing Units	11
Vacant Housing Units	11
Median Value (\$): Owner Occupied Housing Units	11
Median Contract Rent (\$)	12
Fair Market Rent: 2 Bedrooms	12
<b>Education</b>	
Population Age 25 and Over	13
Percent of Population 25+ with High School or Higher Education	13
Percent of Population 25+ with Bachelors Degree or Higher Education	14
Public School Enrollment (FTE- School Year Beginning...)	14
Pupil/Teacher Ratio (School Year Beginning...)	15

## Kansas County Profiles Table of Contents

### Social Environment

Total Child Care Facilities	15
Preschools	16
Food Stamp Beneficiaries	16
Percent of Population Receiving Food Stamps	17
Estimated Number of People in Poverty	17
Estimated Percent of People in Poverty	18
Estimated Number of Related Children Age 5 to 17 in Families in Poverty	18
Estimated Percent of Related Children Age 5 to 17 in Families in Poverty	19
Estimated Number Under 18 in Poverty	19
Estimated Percent Under 18 in Poverty	20

### Business

Establishments: Total	21
Establishments: 1-19 Employees	22
Establishments: 20-99 Employees	22
Establishments: 100-499 Employees	23
Establishments: 500 or More Employees	23
Establishments: Forestry, Fishing, Hunting, and Ag Support	24
Establishments: Mining	24
Establishments: Utilities	25
Establishments: Construction	25
Establishments: Manufacturing	26
Establishments: Wholesale Trade	26
Establishments: Retail Trade	27
Establishments: Transportation and Warehousing	27
Establishments: Information	28
Establishments: Finance and Insurance	28
Establishments: Real Estate, Rental, and Leasing	29
Establishments: Professional, Scientific, and Technical Services	29
Establishments: Management of Companies and Enterprises	30
Establishments: Admin, Support, Waste Management, and Remediation	30
Establishments: Educational Services	31
Establishments: Health Care and Social Assistance	31
Establishments: Arts, Entertainment, and Recreation	32
Establishments: Accommodation and Food Services	32
Establishments: Other Services	33

## Kansas County Profiles Table of Contents

<b>Business</b>	
Total Annual Payroll (\$000)	34
Total Annual Payroll (\$000): Forestry, Fishing, Hunting, and Ag Support	35
Total Annual Payroll (\$000): Mining	35
Total Annual Payroll (\$000): Utilities	36
Total Annual Payroll (\$000): Construction	36
Total Annual Payroll (\$000): Manufacturing	37
Total Annual Payroll (\$000): Wholesale Trade	37
Total Annual Payroll (\$000): Retail Trade	38
Total Annual Payroll (\$000): Transportation and Warehousing	38
Total Annual Payroll (\$000): Information	39
Total Annual Payroll (\$000): Finance and Insurance	39
Total Annual Payroll (\$000): Real Estate, Rental, and Leasing	40
Total Annual Payroll (\$000): Professional, Scientific, and Technical Services	40
Total Annual Payroll (\$000): Management of Companies and Enterprises	41
Total Annual Payroll (\$000): Admin, Support, Waste Management, and Remediation	41
Total Annual Payroll (\$000): Educational Services	42
Total Annual Payroll (\$000): Health Care and Social Assistance	42
Total Annual Payroll (\$000): Arts, Entertainment, and Recreation	43
Total Annual Payroll (\$000): Accommodation and Food Services	43
Total Annual Payroll (\$000): Other Services	44
Nominal Taxable Retail Sales (Million\$)	44
Retail Pull Factor	45
<b>Employment</b>	
Civilian Labor Force (BLS - Place of Residence)	46
Employed (BLS - Place of Residence)	47
Unemployed (BLS - Place of Residence)	48
Unemployment Rate (BLS - Place of Residence)	49
BEA Employment: Total (Place of Work)	49
BEA Employment: Farm	50
BEA Employment: Non-Farm	50
Average Wage per Job (\$)	51
BEA Employment: Forestry, Fishing, Hunting, and Ag Support	51
BEA Employment: Mining	52
BEA Employment: Utilities	52
BEA Employment: Construction	53
BEA Employment: Manufacturing	53
BEA Employment: Wholesale Trade	54
BEA Employment: Retail Trade	54
BEA Employment: Transportation and Warehousing	55
BEA Employment: Information	55
BEA Employment: Finance and Insurance	56
BEA Employment: Real Estate, Rental, and Leasing	56
BEA Employment: Professional and Technical Services	57
BEA Employment: Management of Companies and Enterprises	57
BEA Employment: Administrative and Waste Services	58
BEA Employment: Educational Services	58
BEA Employment: Health Care and Social Assistance	59
BEA Employment: Arts, Entertainment, and Recreation	59
BEA Employment: Government and Government Enterprises	60
BEA Employment: Accommodation and Food Services	60
BEA Employment: Other Services, Except Public Administration	61

## Kansas County Profiles Table of Contents

### Income

BEA Per Capita Personal Income (\$)	61
Sources of Personal Income: Total Personal Income (\$000)	62
Sources of Personal Income: Wages And Salaries (\$000)	62
Sources of Personal Income: Proprietors-Farm (\$000)	63
Sources of Personal Income: Proprietors-Nonfarm (\$000)	63
Sources of Personal Income: Dividends, Interest, Rent (\$000)	64
Sources of Personal Income: Transfer Payments (\$000)	64
Sources of Personal Income: Less Social Insurance (\$000)	65
HUD Median Family Income	65
HUD 30% Low-To-Medium Income (LMI) Limit - 4 Persons	66
HUD 50% Low-To-Medium Income (LMI) Limit - 4 Persons	66
HUD 80% Low-To-Medium Income (LMI) Limit - 4 Persons	66

### Banking

Bank Deposits (\$000)	67
Number of Banks	67
Number of Banking Offices	68

### Government

Tangible Assessed Valuation (million\$)	68
Sales Tax Collections	69

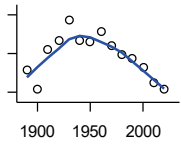
### Crime

Crime Index Offenses	69
Property Crimes	70
Violent Crimes	70

### Agriculture

Number of Farms	71
Total Acres Harvested	71
Value: Livestock and Poultry (\$000)	71
Value: Field Crops (\$000) Excluding Government Program Payments	72

**Population**



**DECENNIAL CENSUS:TOTAL POPULATION**

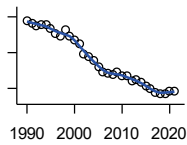
U.S. Census Bureau: Decennial Census

Year	County	State of Kansas	Non Metro Kansas	County Rank	Per 1000 or \$ Per Capita
1890	2,060	1,427,096	968,413	94	.
1900	1,563	1,470,495	981,206	92	.
1910	2,603	1,690,949	1,138,294	98	.
1920	2,848	1,769,257	1,153,525	97	.
1930	3,372	1,880,999	1,180,056	97	.
1940	2,821	1,801,028	1,097,216	96	.
1950	2,808	1,905,299	1,046,823	99	.
1960	3,060	2,178,611	1,021,510	100	.
1970	2,707	2,246,578	958,104	100	.
1980	2,472	2,363,679	980,085	101	.
1990	2,375	2,477,574	939,416	100	.
2000	2,155	2,688,418	959,507	101	.
2010	1,750	2,853,118	929,981	103	.
2020	1,574	2,937,880	892,006	103	.

County: county value. Kansas: state value. County Rank: highest county value ranked #1. (\$000): thousands of dollars. Nonmetro Kansas: Kansas total less Metropolitan Areas as defined by the Office of Management and Budget (OMB; released 3/6/2020). Per 1000: For nonmoney amounts, Per 1000=(county value / county population for the same year as the data) x 1000. \$ Per capita=(county value / county population for the same year as the data). Value= . indicates missing or suppressed data or value not calculated.

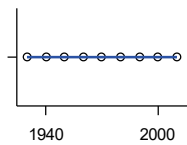
**Population**

**ESTIMATED POPULATION**



U.S. Census Bureau

Year	County	State of Kansas	Non Metro Kansas	County Rank	Per 1000 or \$ Per Capita
1990	2,359	2,481,349	938,607	100	.
1991	2,329	2,498,722	938,965	101	.
1992	2,302	2,532,394	942,759	101	.
1993	2,306	2,556,547	947,515	100	.
1994	2,317	2,580,513	952,178	101	.
1995	2,277	2,601,007	957,771	101	.
1996	2,220	2,614,554	959,455	101	.
1997	2,189	2,635,292	960,225	101	.
1998	2,251	2,660,598	960,569	101	.
1999	2,180	2,678,338	960,704	101	.
2000	2,145	2,693,681	959,230	101	.
2001	2,104	2,702,162	952,607	102	.
2002	1,981	2,713,535	945,985	102	.
2003	1,956	2,723,004	941,474	102	.
2004	1,916	2,734,373	937,623	102	.
2005	1,848	2,745,299	932,852	103	.
2006	1,780	2,762,931	928,809	103	.
2007	1,763	2,783,785	927,643	103	.
2008	1,756	2,808,076	926,248	103	.
2009	1,779	2,832,704	926,755	103	.
2010	1,736	2,858,190	930,028	103	.
2011	1,743	2,869,225	927,675	103	.
2012	1,684	2,885,257	925,152	103	.
2013	1,698	2,893,212	922,383	103	.
2014	1,666	2,900,475	917,854	103	.
2015	1,630	2,909,011	912,199	103	.
2016	1,593	2,910,844	905,099	103	.
2017	1,548	2,908,718	897,981	103	.
2018	1,546	2,911,359	892,656	103	.
2019	1,535	2,913,314	887,455	103	.
2020	1,568	2,935,880	889,750	103	.
2021	1,565	2,934,582	886,438	103	.



**URBAN POPULATION**

U.S. Census Bureau: Decennial Census

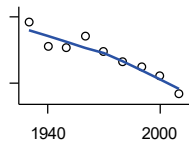
Year	County	State of Kansas	Non Metro Kansas	County Rank	Per 1000 or \$ Per Capita
1930	0	729,834	336,666	105	.
1940	0	753,941	349,228	105	.
1950	0	993,220	398,923	105	.
1960	0	1,328,741	457,447	105	.
1970	0	1,484,870	450,543	105	.
1980	0	1,575,899	474,769	105	.
1990	0	1,712,564	464,205	105	.
2000	0	1,920,081	488,011	105	.
2010	0	2,116,961	485,780	105	.

County: county value. Kansas: state value. County Rank: highest county value ranked #1. (\$000): thousands of dollars. Nonmetro Kansas: Kansas total less Metropolitan Areas as defined by the Office of Management and Budget (OMB; released 3/6/2020). Per 1000: For nonmoney amounts, Per 1000=(county value / county population for the same year as the data) x 1000. \$ Per capita=(county value / county population for the same year as the data). Value= . indicates missing or suppressed data or value not calculated.



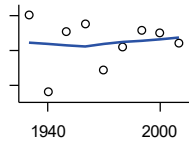
**Population**

**RURAL POPULATION**



U.S. Census Bureau

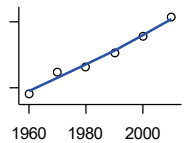
Year	County	State of Kansas	Non Metro Kansas	County Rank	Per 1000 or \$ Per Capita
1930	3,372	1,151,165	843,390	96	.
1940	2,821	1,047,087	747,988	95	.
1950	2,808	912,079	647,900	96	.
1960	3,060	849,870	564,063	94	.
1970	2,707	761,708	509,972	95	.
1980	2,472	787,780	505,873	95	.
1990	2,375	765,010	475,211	94	.
2000	2,155	768,337	471,900	97	.
2010	1,750	736,157	444,201	100	.



**NET MIGRATION: DECADE ENDING...**

calculated by the Institute for Policy and Social Research, The University of Kansas

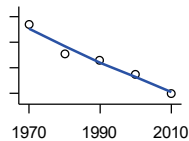
Year	County	State of Kansas	Non Metro Kansas	County Rank	Per 1000 or \$ Per Capita
1930	9	-66,132	-101,869	30	2.7
1940	-879	-192,649	-166,022	15	-311.6
1950	-185	-84,329	-158,379	28	-65.9
1960	-96	-38,999	-146,640	13	-31.4
1970	-628	-119,662	-105,116	40	-232.0
1980	-356	-21,983	-6,184	68	-144.0
1990	-164	-61,835	-79,274	16	-69.1
2000	-202	68,960	4,247	75	-93.7
2010	-320	5,578	-50,648	62	-182.9



**MEDIAN AGE**

U.S. Census Bureau: Decennial Census

Year	County	State of Kansas	Non Metro Kansas	County Rank	Per 1000 or \$ Per Capita
1960	28.5	26.9	.	82	.
1970	33.7	28.7	.	61	.
1980	34.7	30.1	.	49	.
1990	37.9	32.9	.	42	.
2000	41.6	35.2	.	29	.
2010	46.1	36.0	.	25	.



**POPULATION UNDER 18 (DECENNIAL CENSUS)**

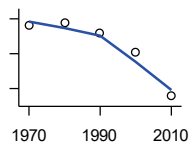
U.S. Census Bureau: Decennial Census

Year	County	State of Kansas	Non Metro Kansas	County Rank	Per 1000 or \$ Per Capita
1970	942	746,354	306,227	100	.
1980	705	649,035	263,919	99	.
1990	655	661,614	250,107	99	.
2000	548	712,993	250,757	102	.
2010	394	726,939	229,213	103	.

County: county value. Kansas: state value. County Rank: highest county value ranked #1. (\$000): thousands of dollars. Nonmetro Kansas: Kansas total less Metropolitan Areas as defined by the Office of Management and Budget (OMB; released 3/6/2020). Per 1000: For nonmoney amounts, Per 1000=(county value / county population for the same year as the data) x 1000. \$ Per capita=(county value / county population for the same year as the data). Value= . indicates missing or suppressed data or value not calculated.

**Population**

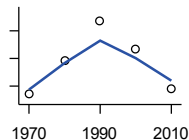
**POPULATION AGE 18 AND OVER  
(DECENNIAL CENSUS)**



U.S. Census Bureau: Decennial Census

Year	County	State of Kansas	Non Metro Kansas	County Rank	Per 1000 or \$ Per Capita
1970	1,765	1,500,224	654,288	101	.
1980	1,774	1,714,282	716,684	101	.
1990	1,720	1,815,960	689,309	101	.
2000	1,607	1,975,425	709,154	101	.
2010	1,356	2,126,179	700,768	103	.

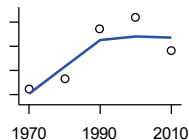
**POPULATION AGE 65 AND OVER  
(DECENNIAL CENSUS)**



U.S. Census Bureau: Decennial Census

Year	County	State of Kansas	Non Metro Kansas	County Rank	Per 1000 or \$ Per Capita
1970	360	266,201	149,049	96	.
1980	420	306,263	164,932	97	.
1990	493	342,571	168,579	96	.
2000	441	356,229	161,769	100	.
2010	369	376,116	154,214	101	.

**POPULATION AGE 85 AND OVER  
(DECENNIAL CENSUS)**



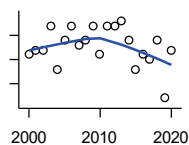
U.S. Census Bureau: Decennial Census

Year	County	State of Kansas	Non Metro Kansas	County Rank	Per 1000 or \$ Per Capita
1970	25	23,899	13,698	97	.
1980	33	33,455	18,804	98	.
1990	74	42,241	22,970	96	.
2000	84	51,770	26,644	95	.
2010	56	59,318	26,197	102	.

County: county value. Kansas: state value. County Rank: highest county value ranked #1. (\$000): thousands of dollars. Nonmetro Kansas: Kansas total less Metropolitan Areas as defined by the Office of Management and Budget (OMB; released 3/6/2020). Per 1000: For nonmoney amounts, Per 1000=(county value / county population for the same year as the data) x 1000. \$ Per capita=(county value / county population for the same year as the data). Value= . indicates missing or suppressed data or value not calculated.

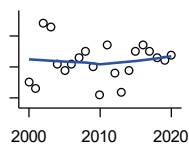
**Vital Statistics and Health**

**BIRTHS (LIVE)**



Kansas Department of Health and Environment

Year	County	State of Kansas	Non Metro Kansas	County Rank	Per 1000 or \$ Per Capita
2000	16	39,654	12,980	104	7.4
2001	17	38,832	12,527	104	8.1
2002	17	39,338	12,476	103	8.6
2003	22	39,353	12,342	100	11.2
2004	13	39,553	12,398	105	6.8
2005	19	39,701	12,382	102	10.3
2006	22	40,896	12,726	97	12.4
2007	18	41,951	12,990	102	10.2
2008	19	41,815	12,970	101	10.8
2009	22	41,388	12,949	102	12.4
2010	16	40,439	12,200	103	9.1
2011	22	39,628	12,098	99	12.6
2012	22	40,304	12,217	103	13.1
2013	23	38,805	11,877	101	13.5
2014	19	39,193	12,052	103	11.4
2015	13	39,126	11,836	105	8.0
2016	16	38,048	11,467	103	10.0
2017	15	36,464	10,968	105	9.7
2018	19	36,268	10,826	102	12.3
2019	7	35,395	10,506	105	4.6
2020	17	34,368	10,222	102	10.8



**DEATHS**

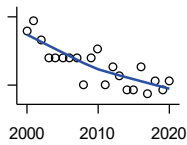
Kansas Department of Health and Environment

Year	County	State of Kansas	Non Metro Kansas	County Rank	Per 1000 or \$ Per Capita
2000	20	24,676	11,175	102	9.3
2001	18	24,590	10,807	103	8.6
2002	39	24,968	11,079	90	19.7
2003	38	24,417	10,615	90	19.4
2004	26	23,720	10,369	101	13.6
2005	24	24,632	10,599	100	13.0
2006	26	24,489	10,538	102	14.6
2007	28	24,413	10,601	99	15.9
2008	30	24,896	10,593	99	17.1
2009	25	23,997	9,938	102	14.1
2010	16	24,428	10,105	104	9.1
2011	32	25,114	10,520	97	18.4
2012	23	25,084	10,259	100	13.7
2013	17	25,347	10,249	103	10.0
2014	24	25,731	10,275	100	14.4
2015	30	26,611	10,539	98	18.4
2016	32	26,129	10,231	91	20.1
2017	30	26,725	10,452	93	19.4
2018	28	27,213	10,389	95	18.1
2019	27	27,312	10,569	98	17.6
2020	29	31,667	11,850	98	18.4

County: county value. Kansas: state value. County Rank: highest county value ranked #1. (\$000): thousands of dollars. Nonmetro Kansas: Kansas total less Metropolitan Areas as defined by the Office of Management and Budget (OMB; released 3/6/2020). Per 1000: For nonmoney amounts, Per 1000=(county value / county population for the same year as the data) x 1000. \$ Per capita=(county value / county population for the same year as the data). Value= . indicates missing or suppressed data or value not calculated.

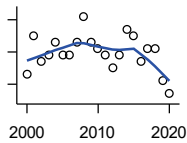
**Vital Statistics and Health**

**MARRIAGES**



Kansas Department of Health and Environment

Year	County	State of Kansas	Non Metro Kansas	County Rank	Per 1000 or \$ Per Capita
2000	17	20,426	7,333	98	7.9
2001	19	20,457	7,441	96	9.0
2002	15	19,783	6,794	98	7.6
2003	11	18,722	6,469	101	5.6
2004	11	19,174	6,756	100	5.7
2005	11	18,745	6,481	103	6.0
2006	11	18,836	6,433	100	6.2
2007	11	18,910	6,464	99	6.2
2008	5	18,717	6,283	104	2.8
2009	11	18,268	6,015	102	6.2
2010	13	18,150	5,925	96	7.4
2011	5	17,897	5,977	105	2.9
2012	9	18,154	5,752	102	5.3
2013	7	17,328	5,533	102	4.1
2014	4	17,655	5,535	105	2.4
2015	4	17,595	5,400	104	2.5
2016	9	17,948	5,340	98	5.6
2017	3	17,274	5,163	105	1.9
2018	6	16,362	4,999	103	3.9
2019	4	15,403	4,650	105	2.6
2020	6	14,038	4,066	100	3.8



**DIVORCES AND ANNULMENTS**

Kansas Department of Health and Environment

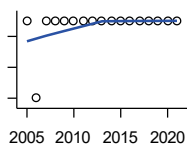
Year	County	State of Kansas	Non Metro Kansas	County Rank	Per 1000 or \$ Per Capita
2000	4	10,105	4,000	102	1.9
2001	10	9,885	3,818	83	4.8
2002	6	9,645	3,716	98	3.0
2003	7	8,644	3,464	95	3.6
2004	9	8,759	3,506	88	4.7
2005	7	8,476	3,311	91	3.8
2006	7	9,145	3,387	92	3.9
2007	9	9,347	3,402	88	5.1
2008	13	9,818	3,655	73	7.4
2009	9	10,333	3,463	82	5.1
2010	8	10,579	3,530	92	4.6
2011	7	10,445	3,347	94	4.0
2012	5	9,782	3,040	99	3.0
2013	7	9,085	2,973	91	4.1
2014	11	8,441	2,682	75	6.6
2015	10	8,036	2,704	73	6.1
2016	6	7,198	2,424	89	3.8
2017	8	6,494	2,315	79	5.2
2018	8	6,538	2,269	76	5.2
2019	3	6,398	2,357	103	2.0
2020	1	5,169	1,866	103	0.6

County: county value. Kansas: state value. County Rank: highest county value ranked #1. (\$000): thousands of dollars. Nonmetro Kansas: Kansas total less Metropolitan Areas as defined by the Office of Management and Budget (OMB; released 3/6/2020). Per 1000: For nonmoney amounts, Per 1000=(county value / county population for the same year as the data) x 1000. \$ Per capita=(county value / county population for the same year as the data). Value= . indicates missing or suppressed data or value not calculated.

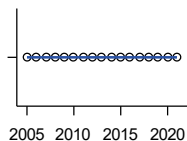
**Vital Statistics and Health**

**PHYSICIANS: M.D. PHYSICIANS**

Year	County	State of Kansas	Non Metro Kansas	County Rank	Per 1000 or \$ Per Capita
2005	1	4,241	912	96	0.5
2006	0	4,310	953	105	0.0
2007	1	5,309	1,046	99	0.6
2008	1	5,110	1,016	101	0.6
2009	1	5,249	996	98	0.6
2010	1	5,192	979	98	0.6
2011	1	5,243	983	96	0.6
2012	1	5,693	1,033	96	0.6
2013	1	6,106	1,071	100	0.6
2014	1	5,839	951	97	0.6
2015	1	5,703	855	96	0.6
2016	1	4,278	643	85	0.6
2017	1	6,332	1,047	99	0.6
2018	1	6,079	1,065	98	0.6
2019	1	6,435	1,036	97	0.7
2020	1	6,668	1,045	98	0.6
2021	1	6,745	1,042	99	0.6



Kansas Department of Health and Environment (1981-2005,2010-);Kansas Health Policy Authority (2006-2009)



**PHYSICIANS: D.O. PHYSICIANS**

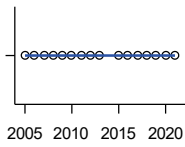
Year	County	State of Kansas	Non Metro Kansas	County Rank	Per 1000 or \$ Per Capita
2005	0	553	174	105	0.0
2006	0	508	171	105	0.0
2007	0	569	169	105	0.0
2008	0	558	166	105	0.0
2009	0	564	160	105	0.0
2010	0	583	169	105	0.0
2011	0	502	152	105	0.0
2012	0	718	200	105	0.0
2013	0	829	210	105	0.0
2014	0	817	189	105	0.0
2015	0	819	190	105	0.0
2016	0	632	136	105	0.0
2017	0	579	129	105	0.0
2018	0	871	164	105	0.0
2019	0	951	212	105	0.0
2020	0	1,018	204	105	0.0
2021	0	1,095	217	105	0.0

Kansas Department of Health and Environment (1981-2005,2010-);Kansas Health Policy Authority (2006-2009)

County: county value. Kansas: state value. County Rank: highest county value ranked #1. (\$000): thousands of dollars. Nonmetro Kansas: Kansas total less Metropolitan Areas as defined by the Office of Management and Budget (OMB; released 3/6/2020). Per 1000: For nonmoney amounts, Per 1000=(county value / county population for the same year as the data) x 1000. \$ Per capita=(county value / county population for the same year as the data). Value= . indicates missing or suppressed data or value not calculated.

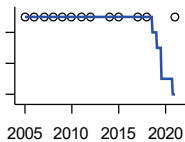
**Vital Statistics and Health**

**DENTISTS**



Kansas Department of Health and Environment (1981-2006,2010-); Kansas Health Policy Authority (2007-2009)

Year	County	State of Kansas	Non Metro Kansas	County Rank	Per 1000 or \$ Per Capita
2005	0	1,347	363	105	0.0
2006	0	1,381	361	105	0.0
2007	0	1,335	350	105	0.0
2008	0	1,392	353	105	0.0
2009	0	1,353	350	105	0.0
2010	0	1,401	365	105	0.0
2011	0	1,338	346	105	0.0
2012	0	1,434	392	105	0.0
2013	0	1,212	328	105	0.0
2015	0	1,240	327	105	0.0
2016	0	1,456	350	105	0.0
2017	0	1,467	350	105	0.0
2018	0	1,604	359	105	0.0
2019	0	1,646	355	105	0.0
2020	0	1,646	355	105	0.0
2021	0	1,688	362	105	0.0



**NUMBER OF HOSPITALS**

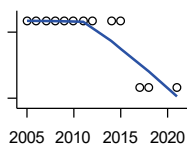
American Hospital Association, American Hospital Association Guide to the Health Care Field

Year	County	State of Kansas	Non Metro Kansas	County Rank	Per 1000 or \$ Per Capita
2005	1	158	105	96	.
2006	1	158	105	96	.
2007	1	159	104	95	.
2008	1	159	104	95	.
2009	1	158	105	96	.
2010	1	158	104	96	.
2011	1	158	103	96	.
2012	1	157	103	96	.
2014	1	156	.	96	.
2015	1	155	103	96	.
2017	1	157	102	96	.
2018	1	154	99	95	.
2021	1	151	.	95	.

County: county value. Kansas: state value. County Rank: highest county value ranked #1. (\$000): thousands of dollars. Nonmetro Kansas: Kansas total less Metropolitan Areas as defined by the Office of Management and Budget (OMB; released 3/6/2020). Per 1000: For nonmoney amounts, Per 1000=(county value / county population for the same year as the data) x 1000. \$ Per capita=(county value / county population for the same year as the data). Value= . indicates missing or suppressed data or value not calculated.

**Vital Statistics and Health**

**NUMBER OF HOSPITAL BEDS**

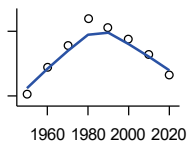


Kansas Department of Health and Environment

Year	County	State of Kansas	Non Metro Kansas	County Rank	Per 1000 or \$ Per Capita
2005	31	12,389	5,687	71	16.8
2006	31	11,992	5,514	71	17.4
2007	31	12,171	5,637	68	17.6
2008	31	12,332	5,700	68	17.7
2009	31	12,283	5,652	67	17.4
2010	31	12,218	5,521	67	17.7
2011	31	12,182	5,335	66	17.8
2012	31	12,002	5,355	66	18.4
2014	31	12,034	.	67	18.6
2015	31	11,926	5,330	67	19.0
2017	25	11,491	4,825	83	16.1
2018	25	11,448	4,583	82	16.2
2021	25	11,199	.	76	16.0

**Housing**

**HOUSING UNITS (DECENNIAL)**



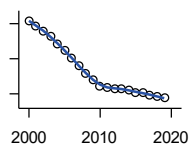
U.S. Census Bureau: Decennial Census

Year	County	State of Kansas	Non Metro Kansas	County Rank	Per 1000 or \$ Per Capita
1950	806	586,650	328,210	99	287.0
1960	930	672,899	329,380	99	303.9
1970	1,034	789,735	363,824	100	382.0
1980	1,159	955,207	416,877	101	468.9
1990	1,117	1,044,112	417,062	101	470.3
2000	1,065	1,131,395	422,218	101	494.2
2010	990	1,233,215	424,050	102	565.7
2020	895	1,275,689	413,120	102	568.6

County: county value. Kansas: state value. County Rank: highest county value ranked #1. (\$000): thousands of dollars. Nonmetro Kansas: Kansas total less Metropolitan Areas as defined by the Office of Management and Budget (OMB; released 3/6/2020). Per 1000: For nonmoney amounts, Per 1000=(county value / county population for the same year as the data) x 1000. \$ Per capita=(county value / county population for the same year as the data). Value= . indicates missing or suppressed data or value not calculated.

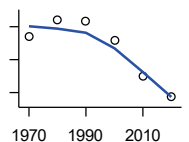
**Housing**

**HOUSING UNITS (ESTIMATED)**



U.S. Census Bureau

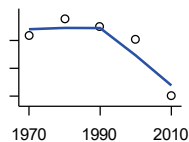
Year	County	State of Kansas	Non Metro Kansas	County Rank	Per 1000 or \$ Per Capita
2000	1,063	1,134,529	422,560	101	493.3
2001	1,058	1,146,858	423,876	101	502.9
2002	1,052	1,160,129	425,089	101	531.0
2003	1,046	1,171,620	425,936	101	534.8
2004	1,037	1,184,702	426,593	101	541.2
2005	1,030	1,195,791	426,964	101	557.4
2006	1,021	1,206,692	426,713	101	573.6
2007	1,012	1,217,608	426,090	101	574.0
2008	1,003	1,225,625	425,768	101	571.2
2009	996	1,230,552	424,776	101	559.9
2010	989	1,234,456	424,174	102	565.1
2011	987	1,238,052	424,549	102	566.3
2012	986	1,241,992	425,116	102	585.5
2013	986	1,246,675	425,699	102	580.7
2014	984	1,253,284	426,269	102	590.6
2015	982	1,258,999	426,844	102	602.5
2016	981	1,265,684	427,465	102	615.8
2017	979	1,273,536	427,746	102	632.4
2018	977	1,280,649	428,099	102	632.0
2019	975	1,288,401	428,495	102	635.2



**OCCUPIED HOUSING UNITS**

U.S. Census Bureau: Decennial Census

Year	County	State of Kansas	Non Metro Kansas	County Rank	Per 1000 or \$ Per Capita
1970	920	727,364	326,494	101	339.9
1980	971	872,239	371,693	101	392.8
1990	966	944,726	365,901	100	406.7
2000	910	1,037,891	375,313	100	422.3
2010	799	1,112,096	370,269	103	456.6
2020	736	1,151,360	356,330	102	467.6



**OWNER OCCUPIED HOUSING UNITS**

U.S. Census Bureau: Decennial Census

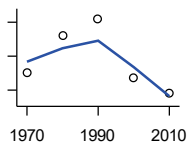
Year	County	State of Kansas	Non Metro Kansas	County Rank	Per 1000 or \$ Per Capita
1970	710	502,585	236,338	98	262.3
1980	739	612,433	277,096	101	298.9
1990	724	641,762	263,099	98	304.8
2000	703	718,703	271,350	100	326.2
2010	601	753,532	261,763	103	343.4

County: county value. Kansas: state value. County Rank: highest county value ranked #1. (\$000): thousands of dollars. Nonmetro Kansas: Kansas total less Metropolitan Areas as defined by the Office of Management and Budget (OMB; released 3/6/2020). Per 1000: For nonmoney amounts, Per 1000=(county value / county population for the same year as the data) x 1000. \$ Per capita=(county value / county population for the same year as the data). Value= . indicates missing or suppressed data or value not calculated.



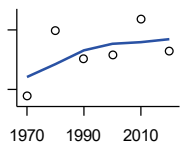
**Housing**

**RENTER OCCUPIED HOUSING UNITS**



U.S. Census Bureau: Decennial Census

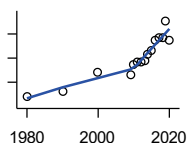
Year	County	State of Kansas	Non Metro Kansas	County Rank	Per 1000 or \$ Per Capita
1970	210	224,779	90,156	103	77.6
1980	232	259,806	94,597	100	93.9
1990	242	302,964	102,802	101	101.9
2000	207	319,188	103,963	101	96.1
2010	198	358,564	108,506	101	113.1



**VACANT HOUSING UNITS**

U.S. Census Bureau: Decennial Census

Year	County	State of Kansas	Non Metro Kansas	County Rank	Per 1000 or \$ Per Capita
1970	113	60,058	35,954	99	41.7
1980	179	77,912	41,584	99	72.4
1990	151	99,386	51,161	103	63.6
2000	155	93,309	46,904	96	71.9
2010	191	121,119	53,781	95	109.1
2020	159	124,329	56,790	98	101.0



**MEDIAN VALUE (\$): OWNER OCCUPIED HOUSING UNITS**

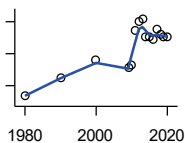
U.S. Census Bureau, Decennial Census (- 2000), (2009 -) American Community Survey five-year average ending in year shown.

Year	County	State of Kansas	Non Metro Kansas	County Rank	Per 1000 or \$ Per Capita
1980	28,000	37,800	.	51	.
1990	32,600	52,200	.	52	.
2000	48,500	83,500	.	62	.
2009	45,900	118,500	.	102	.
2010	55,100	122,600	.	90	.
2011	56,500	125,500	.	90	.
2012	57,000	127,400	.	91	.
2013	58,200	128,400	.	93	.
2014	62,600	129,400	.	92	.
2015	66,200	132,000	.	90	.
2016	74,700	135,300	.	78	.
2017	76,400	139,200	.	77	.
2018	76,700	145,400	.	82	.
2019	90,800	151,900	.	60	.
2020	75,100	157,600	.	88	.

County: county value. Kansas: state value. County Rank: highest county value ranked #1. (\$000): thousands of dollars. Nonmetro Kansas: Kansas total less Metropolitan Areas as defined by the Office of Management and Budget (OMB; released 3/6/2020). Per 1000: For nonmoney amounts, Per 1000=(county value / county population for the same year as the data) x 1000. \$ Per capita=(county value / county population for the same year as the data). Value= . indicates missing or suppressed data or value not calculated.

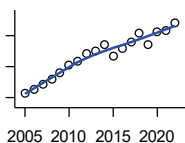
**Housing**

**MEDIAN CONTRACT RENT (\$)**



U.S. Census Bureau, Decennial Census (- 2000), (2009 -) American Community Survey five-year average ending in year shown.

Year	County	State of Kansas	Non Metro Kansas	County Rank	Per 1000 or \$ Per Capita
1980	134	219	.	99	.
1990	249	372	.	78	.
2000	365	498	.	63	.
2009	313	491	.	62	.
2010	328	507	.	60	.
2011	546	699	.	52	.
2012	601	715	.	37	.
2013	618	732	.	35	.
2014	505	748	.	89	.
2015	504	757	.	93	.
2016	493	775	.	94	.
2017	551	801	.	87	.
2018	518	831	.	100	.
2019	503	850	.	101	.
2020	503	863	.	101	.



**FAIR MARKET RENT: 2 BEDROOMS**

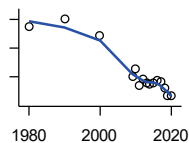
U.S. Department of Housing and Urban Development (HUD)

Year	County	State of Kansas	Non Metro Kansas	County Rank	Per 1000 or \$ Per Capita
2005	516	.	.	39	.
2006	527	.	.	41	.
2007	543	.	.	40	.
2008	558	628	.	41	.
2009	582	653	.	41	.
2010	606	678	.	43	.
2011	616	684	.	43	.
2012	644	660	.	19	.
2013	651	712	.	24	.
2014	671	746	.	27	.
2015	634	756	.	105	.
2016	658	781	.	105	.
2017	681	811	.	105	.
2018	709	815	.	40	.
2019	672	828	.	105	.
2020	714	855	.	105	.
2021	718	874	.	105	.
2022	742	879	.	105	.

County: county value. Kansas: state value. County Rank: highest county value ranked #1. (\$000): thousands of dollars. Nonmetro Kansas: Kansas total less Metropolitan Areas as defined by the Office of Management and Budget (OMB; released 3/6/2020). Per 1000: For nonmoney amounts, Per 1000=(county value / county population for the same year as the data) x 1000. \$ Per capita=(county value / county population for the same year as the data). Value= . indicates missing or suppressed data or value not calculated.

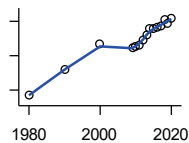
**Education**

**POPULATION AGE 25+**



U.S. Census Bureau, Decennial Census (- 2000), (2009 -) American Community Survey five-year average ending in year shown.

Year	County	State of Kansas	Non Metro Kansas	County Rank	Per 1000 or \$ Per Capita
1980	1,554	1,388,102	596,639	.	.
1990	1,604	1,565,936	608,745	.	.
2000	1,491	1,701,207	618,131	.	.
2009	1,203	1,775,427	600,188	.	.
2010	1,259	1,802,904	608,716	.	.
2011	1,137	1,822,400	610,386	.	.
2012	1,181	1,838,079	611,103	.	.
2013	1,159	1,850,010	610,374	.	.
2014	1,150	1,861,894	609,612	.	.
2015	1,159	1,869,698	606,967	.	.
2016	1,171	1,878,495	604,563	.	.
2017	1,163	1,886,741	601,076	.	.
2018	1,120	1,894,675	598,487	.	.
2019	1,067	1,902,279	595,501	.	.
2020	1,070	1,911,990	593,923	.	.



**PERCENT HS GRADUATE OR HIGHER AGE 25+**

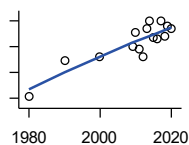
U.S. Census Bureau, Decennial Census (- 2000), (2009 -) American Community Survey five-year average ending in year shown.

Year	County	State of Kansas	Non Metro Kansas	County Rank	Per 1000 or \$ Per Capita
1980	73.4	73.3	.	21	.
1990	81.1	81.3	.	22	.
2000	88.5	86.0	.	10	.
2009	87.4	89.0	.	68	.
2010	87.8	89.2	.	68	.
2011	87.9	89.5	.	75	.
2012	89.6	89.7	.	55	.
2013	90.9	89.8	.	38	.
2014	93.0	90.0	.	18	.
2015	92.8	90.2	.	25	.
2016	93.1	90.3	.	25	.
2017	93.5	90.5	.	15	.
2018	95.5	90.7	.	6	.
2019	94.3	91.0	.	14	.
2020	95.9	91.4	.	6	.

County: county value. Kansas: state value. County Rank: highest county value ranked #1. (\$000): thousands of dollars. Nonmetro Kansas: Kansas total less Metropolitan Areas as defined by the Office of Management and Budget (OMB; released 3/6/2020). Per 1000: For nonmoney amounts, Per 1000=(county value / county population for the same year as the data) x 1000. \$ Per capita=(county value / county population for the same year as the data). Value= . indicates missing or suppressed data or value not calculated.

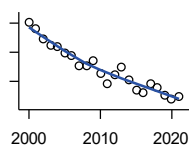
**Education**

**PERCENT BACHELORS DEGREE OR HIGHER AGE 25+**



U.S. Census Bureau, Decennial Census (- 2000), (2009 -) American Community Survey five-year average ending in year shown.

Year	County	State of Kansas	Non Metro Kansas	County Rank	Per 1000 or \$ Per Capita
1980	12.2	17.0	.	45	.
1990	17.8	21.1	.	14	.
2000	18.5	25.8	.	28	.
2009	20.0	28.8	.	39	.
2010	22.2	29.3	.	24	.
2011	19.6	29.7	.	50	.
2012	18.4	30.0	.	68	.
2013	22.7	30.3	.	28	.
2014	24.0	30.7	.	21	.
2015	21.4	31.0	.	47	.
2016	21.3	31.6	.	50	.
2017	23.9	32.3	.	34	.
2018	21.6	32.9	.	55	.
2019	23.1	33.4	.	46	.
2020	22.8	33.9	.	51	.



**PUBLIC SCHOOL ENROLLMENT (FTE) SCHOOL YEAR BEGINNING...**

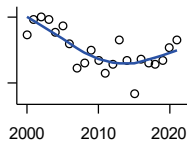
Kansas State Department of Education

Year	County	State of Kansas	Non Metro Kansas	County Rank	Per 1000 or \$ Per Capita
2000	401.6	448,150.8	166,722.5	102	186.4
2001	389.7	447,047.1	164,365.0	101	185.2
2002	372.6	444,860.3	161,555.4	102	188.1
2003	361.1	443,620.6	159,130.2	101	184.6
2004	358.8	441,957.2	156,566.3	100	187.3
2005	348.2	442,708.4	155,197.2	100	188.4
2006	343.4	444,878.7	153,842.3	99	192.9
2007	326.0	446,831.3	152,337.1	100	184.9
2008	326.5	447,730.0	150,572.7	99	185.9
2009	336.0	453,202.5	151,246.8	98	188.9
2010	314.5	455,405.0	151,023.8	98	179.7
2011	296.0	456,000.5	150,257.9	103	169.8
2012	312.0	458,496.4	150,463.0	100	185.3
2013	324.8	461,950.0	150,420.9	98	191.3
2014	302.0	464,395.4	150,499.4	100	181.3
2015	286.0	463,504.0	149,539.3	101	175.5
2016	280.1	459,920.3	147,293.5	102	175.8
2017	295.0	477,977.9	152,096.3	103	190.6
2018	288.5	476,481.7	150,456.8	102	186.6
2019	275.6	476,525.1	150,045.2	104	179.5
2020	268.7	462,088.0	146,369.6	104	170.7
2021	274.8	463,652.4	147,500.4	104	175.6

County: county value. Kansas: state value. County Rank: highest county value ranked #1. (\$000): thousands of dollars. Nonmetro Kansas: Kansas total less Metropolitan Areas as defined by the Office of Management and Budget (OMB; released 3/6/2020). Per 1000: For nonmoney amounts, Per 1000=(county value / county population for the same year as the data) x 1000. \$ Per capita=(county value / county population for the same year as the data). Value= . indicates missing or suppressed data or value not calculated.

**Education**

**PUPIL/TEACHER RATIO SCHOOL YEAR BEGINNING...**

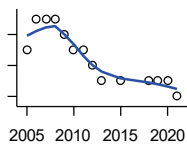


Kansas State Department of Education

Year	County	State of Kansas	Non Metro Kansas	County Rank	Per 1000 or \$ Per Capita
2000	10.2	15.4	13.9	98	.
2001	10.9	15.3	13.8	91	.
2002	11.0	15.4	13.9	94	.
2003	10.9	15.5	13.8	91	.
2004	10.3	15.3	13.6	99	.
2005	10.6	15.0	13.4	96	.
2006	9.8	14.7	13.2	100	.
2007	8.7	14.6	13.1	104	.
2008	8.9	14.4	12.9	102	.
2009	9.5	14.8	13.2	102	.
2010	9.0	15.2	13.6	103	.
2011	8.5	15.1	13.5	105	.
2012	8.8	15.1	13.5	103	.
2013	10.0	15.1	13.5	98	.
2014	9.0	15.0	13.6	103	.
2015	7.5	15.2	13.9	105	.
2016	9.1	15.1	13.7	102	.
2017	8.9	15.5	13.9	103	.
2018	8.9	15.3	13.8	103	.
2019	9.0	15.2	13.7	105	.
2020	9.6	14.7	13.4	101	.
2021	10.0	14.8	13.5	97	.

**Social Environment**

**CHILD CARE FACILITIES: TOTAL CHILD CARE FACILITIES**



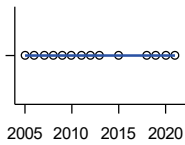
Kansas Department of Health and Environment, Bureau of Adult and Child Care

Year	County	State of Kansas	Non Metro Kansas	County Rank	Per 1000 or \$ Per Capita
2005	5	8,258	3,378	103	2.7
2006	7	8,442	3,429	100	3.9
2007	7	8,241	3,317	99	4.0
2008	7	8,011	3,150	97	4.0
2009	6	7,853	3,066	99	3.4
2010	5	7,354	2,858	102	2.9
2011	5	6,835	2,623	100	2.9
2012	4	6,346	2,409	102	2.4
2013	3	5,754	2,179	103	1.8
2015	3	5,289	2,146	104	1.8
2018	3	4,607	1,904	102	1.9
2019	3	4,287	1,774	101	2.0
2020	3	4,274	1,798	101	1.9
2021	2	4,002	1,700	105	1.3

County: county value. Kansas: state value. County Rank: highest county value ranked #1. (\$000): thousands of dollars. Nonmetro Kansas: Kansas total less Metropolitan Areas as defined by the Office of Management and Budget (OMB; released 3/6/2020). Per 1000: For nonmoney amounts, Per 1000=(county value / county population for the same year as the data) x 1000. \$ Per capita=(county value / county population for the same year as the data). Value= . indicates missing or suppressed data or value not calculated.

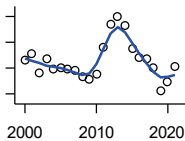
**Social Environment**

**CHILD CARE FACILITIES:  
PRESCHOOLS**



Kansas Department of Health and Environment, Bureau of Adult and Child Care

Year	County	State of Kansas	Non Metro Kansas	County Rank	Per 1000 or \$ Per Capita
2005	0	243	140	105	0.0
2006	0	221	127	105	0.0
2007	0	208	119	105	0.0
2008	0	204	114	105	0.0
2009	0	194	107	105	0.0
2010	0	194	112	105	0.0
2011	0	209	123	105	0.0
2012	0	201	121	105	0.0
2013	0	140	84	105	0.0
2015	0	185	113	105	0.0
2018	0	150	94	105	0.0
2019	0	134	83	105	0.0
2020	0	126	78	105	0.0
2021	0	120	74	105	0.0



**FOOD STAMP BENEFICIARIES**

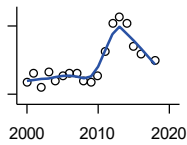
Kansas Social and Rehabilitation Services

Year	County	State of Kansas	Non Metro Kansas	County Rank	Per 1000 or \$ Per Capita
2000	76	110,619	44,825	94	35.3
2001	81	117,241	46,741	93	38.5
2002	66	131,726	52,342	99	33.3
2003	77	155,908	61,280	99	39.4
2004	69	167,971	65,852	100	36.0
2005	70	175,710	67,261	101	37.9
2006	69	182,821	67,487	101	38.8
2007	68	184,035	66,979	100	38.6
2008	63	187,377	67,160	101	35.9
2009	61	208,007	73,637	101	34.3
2010	65	259,609	90,919	103	37.1
2011	86	296,542	101,155	102	49.3
2012	104	303,257	102,478	100	61.8
2013	110	316,424	105,345	99	64.8
2014	103	301,377	100,761	101	61.8
2015	85	277,614	93,353	103	52.1
2016	78	258,412	88,343	102	49.0
2017	77	239,592	82,070	99	49.7
2018	70	219,738	75,208	101	45.3
2019	52	205,261	69,899	104	33.9
2020	59	198,457	66,721	103	37.5
2021	71	203,424	68,883	101	45.4

County: county value. Kansas: state value. County Rank: highest county value ranked #1. (\$000): thousands of dollars. Nonmetro Kansas: Kansas total less Metropolitan Areas as defined by the Office of Management and Budget (OMB; released 3/6/2020). Per 1000: For nonmoney amounts, Per 1000=(county value / county population for the same year as the data) x 1000. \$ Per capita=(county value / county population for the same year as the data). Value= . indicates missing or suppressed data or value not calculated.

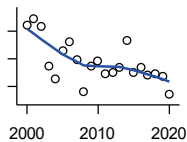
**Social Environment**

**PERCENT OF POPULATION RECEIVING FOOD STAMPS**



U.S. Dept. of Agriculture Food and Nutrition Service (1990-1997); Kansas Social and Rehabilitation Services (1998- )

Year	County	State of Kansas	Non Metro Kansas	County Rank	Per 1000 or \$ Per Capita
2000	3.5	4.1	.	51	.
2001	3.9	4.3	.	53	.
2002	3.3	4.9	.	76	.
2003	4.0	5.7	.	71	.
2004	3.6	6.2	.	83	.
2005	3.8	6.4	.	84	.
2006	3.9	6.6	.	83	.
2007	3.9	6.6	.	87	.
2008	3.6	6.7	.	90	.
2009	3.5	7.4	.	96	.
2010	3.8	9.1	.	99	.
2011	4.9	10.3	.	94	.
2012	6.1	10.5	.	75	.
2013	6.4	10.9	.	76	.
2014	6.1	10.4	.	74	.
2015	5.1	9.6	.	84	.
2016	4.8	8.9	.	87	.
2018	4.5	7.5	.	84	.



**ESTIMATED NUMBER OF PEOPLE IN POVERTY**

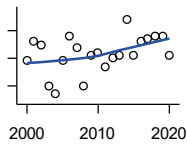
U.S. Census Bureau, Small Area Income and Poverty Estimates

Year	County	State of Kansas	Non Metro Kansas	County Rank	Per 1000 or \$ Per Capita
2000	194	235,087	98,984	102	90.0
2001	199	252,134	106,257	102	94.6
2002	193	265,673	107,542	103	97.4
2003	165	278,163	107,323	104	84.4
2004	155	297,733	111,534	104	80.9
2005	176	310,667	118,768	104	95.2
2006	182	327,102	123,700	104	102.2
2007	169	301,828	111,953	104	95.9
2008	146	307,804	113,015	104	83.1
2009	165	359,692	123,394	104	92.7
2010	168	374,677	131,502	104	96.0
2011	159	383,859	134,912	104	91.2
2012	160	392,095	133,800	104	95.0
2013	164	391,718	134,067	104	96.6
2014	183	381,506	130,213	102	109.8
2015	160	366,069	123,073	104	98.2
2016	164	343,773	121,314	104	103.0
2017	158	335,371	116,854	104	102.1
2018	159	336,892	114,490	104	102.8
2019	157	319,931	110,692	104	102.3
2020	144	300,931	100,998	104	91.5

County: county value. Kansas: state value. County Rank: highest county value ranked #1. (\$000): thousands of dollars. Nonmetro Kansas: Kansas total less Metropolitan Areas as defined by the Office of Management and Budget (OMB; released 3/6/2020). Per 1000: For nonmoney amounts, Per 1000=(county value / county population for the same year as the data) x 1000. \$ Per capita=(county value / county population for the same year as the data). Value= . indicates missing or suppressed data or value not calculated.

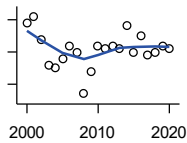
**Social Environment**

**ESTIMATED % OF PEOPLE IN POVERTY**



U.S. Census Bureau, Small Area Income and Poverty Estimates

Year	County	State of Kansas	Non Metro Kansas	County Rank	Per 1000 or \$ Per Capita
2000	9.4	8.9	.	72	.
2001	10.1	9.5	.	74	.
2002	10.0	10.0	.	79	.
2003	8.5	10.4	.	96	.
2004	8.2	11.1	.	99	.
2005	9.4	11.7	.	92	.
2006	10.3	12.2	.	89	.
2007	9.9	11.2	.	83	.
2008	8.5	11.3	.	98	.
2009	9.6	13.2	.	93	.
2010	9.7	13.5	.	95	.
2011	9.2	13.8	.	100	.
2012	9.5	14.0	.	97	.
2013	9.6	13.9	.	97	.
2014	10.9	13.5	.	83	.
2015	9.6	12.9	.	92	.
2016	10.1	12.2	.	90	.
2017	10.2	11.9	.	87	.
2018	10.3	11.9	.	90	.
2019	10.3	11.3	.	80	.
2020	9.6	10.6	.	85	.



**EST. NUMBER OF RELATED CHILDREN AGE 5 TO 17 IN FAMILIES IN POVERTY**

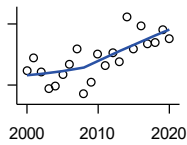
U.S. Census Bureau, Small Area Income and Poverty Estimates

Year	County	State of Kansas	Non Metro Kansas	County Rank	Per 1000 or \$ Per Capita
2000	44	50,388	21,854	103	20.4
2001	46	53,755	23,094	103	21.9
2002	39	52,453	21,423	103	19.7
2003	31	55,419	21,809	103	15.8
2004	30	59,392	22,313	104	15.7
2005	33	60,203	24,244	104	17.9
2006	37	64,427	25,326	103	20.8
2007	35	61,149	23,639	103	19.9
2008	22	59,842	22,661	105	12.5
2009	29	71,850	26,251	104	16.3
2010	37	81,077	29,804	103	21.1
2011	36	82,311	29,306	104	20.7
2012	37	87,594	29,781	103	22.0
2013	36	84,325	29,253	104	21.2
2014	43	83,873	29,354	101	25.8
2015	35	78,192	27,482	104	21.5
2016	40	67,810	25,074	103	25.1
2017	34	67,873	25,032	104	22.0
2018	35	68,153	24,928	105	22.6
2019	37	64,613	23,117	103	24.1
2020	36	59,792	21,143	103	22.9

County: county value. Kansas: state value. County Rank: highest county value ranked #1. (\$000): thousands of dollars. Nonmetro Kansas: Kansas total less Metropolitan Areas as defined by the Office of Management and Budget (OMB; released 3/6/2020). Per 1000: For nonmoney amounts, Per 1000=(county value / county population for the same year as the data) x 1000. \$ Per capita=(county value / county population for the same year as the data). Value= . indicates missing or suppressed data or value not calculated.



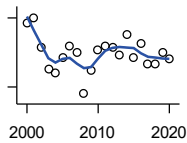
**Social Environment**



EST. % OF RELATED CHILDREN AGE 5 TO 17 IN FAMILIES IN POVERTY

U.S. Census Bureau, Small Area Income and Poverty Estimates

Year	County	State of Kansas	Non Metro Kansas	County Rank	Per 1000 or \$ Per Capita
2000	11.4	10.0	.	68	.
2001	12.7	10.8	.	62	.
2002	11.3	10.5	.	61	.
2003	9.7	11.3	.	88	.
2004	9.9	12.5	.	92	.
2005	11.0	12.8	.	88	.
2006	12.0	13.2	.	77	.
2007	13.6	12.6	.	61	.
2008	9.1	12.3	.	99	.
2009	10.3	14.7	.	100	.
2010	13.1	15.9	.	85	.
2011	11.9	16.2	.	94	.
2012	13.2	17.2	.	83	.
2013	12.3	16.5	.	93	.
2014	16.7	16.4	.	53	.
2015	13.6	15.3	.	76	.
2016	15.8	13.2	.	42	.
2017	14.0	13.4	.	71	.
2018	14.2	13.5	.	74	.
2019	15.4	12.9	.	44	.
2020	14.5	11.9	.	45	.



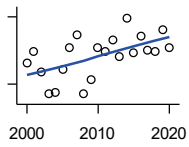
ESTIMATED NUMBER UNDER 18 IN POVERTY

U.S. Census Bureau, Small Area Income and Poverty Estimates

Year	County	State of Kansas	Non Metro Kansas	County Rank	Per 1000 or \$ Per Capita
2000	68	82,619	34,843	103	31.6
2001	70	87,487	36,724	103	33.3
2002	57	84,181	32,870	102	28.8
2003	48	93,896	36,004	104	24.5
2004	46	98,641	36,272	104	24.0
2005	53	100,254	39,118	104	28.7
2006	58	105,193	41,054	103	32.6
2007	55	100,242	37,881	103	31.2
2008	37	100,146	37,552	105	21.1
2009	47	118,187	42,682	104	26.4
2010	56	129,009	46,428	104	32.0
2011	58	133,478	46,832	104	33.3
2012	57	135,261	46,294	103	33.8
2013	54	131,251	44,952	104	31.8
2014	63	125,562	43,933	101	37.8
2015	53	119,994	41,828	104	32.5
2016	59	100,996	37,387	103	37.0
2017	50	102,858	37,955	105	32.3
2018	50	102,616	36,991	105	32.3
2019	55	97,920	34,797	103	35.8
2020	52	88,491	30,767	103	33.0

County: county value. Kansas: state value. County Rank: highest county value ranked #1. (\$000): thousands of dollars. Nonmetro Kansas: Kansas total less Metropolitan Areas as defined by the Office of Management and Budget (OMB; released 3/6/2020). Per 1000: For nonmoney amounts, Per 1000=(county value / county population for the same year as the data) x 1000. \$ Per capita=(county value / county population for the same year as the data). Value= . indicates missing or suppressed data or value not calculated.

**Social Environment**



**ESTIMATED PERCENT UNDER 18 IN POVERTY**

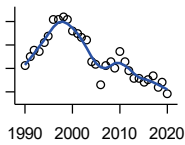
U.S. Census Bureau, Small Area Income and Poverty Estimates

Year	County	State of Kansas	Non Metro Kansas	County Rank	Per 1000 or \$ Per Capita
2000	13.9	11.9	.	63	.
2001	14.9	12.7	.	60	.
2002	13.1	12.1	.	57	.
2003	11.1	13.8	.	95	.
2004	11.3	14.6	.	94	.
2005	13.3	15.2	.	85	.
2006	15.2	15.4	.	72	.
2007	16.4	14.7	.	54	.
2008	11.1	14.6	.	99	.
2009	12.4	17.1	.	98	.
2010	15.2	18.1	.	83	.
2011	14.9	18.8	.	85	.
2012	15.9	19.0	.	76	.
2013	14.4	18.4	.	84	.
2014	17.9	17.6	.	51	.
2015	14.8	16.9	.	77	.
2016	16.3	14.3	.	54	.
2017	15.0	14.7	.	73	.
2018	14.9	14.8	.	76	.
2019	16.8	14.3	.	47	.
2020	15.3	13.0	.	48	.

County: county value. Kansas: state value. County Rank: highest county value ranked #1. (\$000): thousands of dollars. Nonmetro Kansas: Kansas total less Metropolitan Areas as defined by the Office of Management and Budget (OMB; released 3/6/2020). Per 1000: For nonmoney amounts, Per 1000=(county value / county population for the same year as the data) x 1000. \$ Per capita=(county value / county population for the same year as the data). Value= . indicates missing or suppressed data or value not calculated.

**Business**

**ESTABLISHMENTS TOTAL COUNTY BUSINESS PATTERNS**



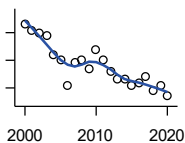
U.S. Census Bureau, County Business Patterns. Beginning with the 2017 data, any tabulation with fewer than 3 establishments were omitted from the release. Data for these establishments are included in the broader total.

Year	County	State of Kansas	Non Metro Kansas	County Rank	Per 1000 or \$ Per Capita
1990	71	65,858	26,802	100	29.9
1991	75	65,941	26,750	99	32.2
1992	78	67,630	27,229	98	33.9
1993	77	68,930	27,655	98	33.4
1994	81	69,822	27,763	97	35.0
1995	84	70,894	28,111	97	36.9
1996	91	72,017	28,353	94	41.0
1997	91	73,924	28,884	96	41.6
1998	92	74,019	28,749	95	40.9
1999	91	74,486	28,536	95	41.7
2000	86	74,939	28,475	96	39.9
2001	85	74,565	28,282	96	40.4
2002	83	75,077	28,183	96	41.9
2003	82	74,972	27,998	96	41.9
2004	73	75,827	28,009	101	38.1
2005	72	76,173	27,830	101	39.0
2006	63	76,446	27,653	101	35.4
2007	71	77,157	27,736	101	40.3
2008	73	76,096	27,314	99	41.6
2009	70	74,698	26,839	100	39.3
2010	77	74,301	26,739	97	44.0
2011	73	73,598	26,555	99	41.9
2012	69	73,944	26,534	99	41.0
2013	66	73,816	26,393	99	38.9
2014	66	74,055	26,292	100	39.6
2015	64	74,526	26,355	101	39.3
2016	65	74,884	26,172	100	40.8
2017	67	74,947	26,093	98	43.3
2018	62	74,559	25,802	101	40.1
2019	64	74,292	25,536	99	41.7
2020	59	73,982	25,178	100	37.5

County: county value. Kansas: state value. County Rank: highest county value ranked #1. (\$000): thousands of dollars. Nonmetro Kansas: Kansas total less Metropolitan Areas as defined by the Office of Management and Budget (OMB; released 3/6/2020). Per 1000: For nonmoney amounts, Per 1000=(county value / county population for the same year as the data) x 1000. \$ Per capita=(county value / county population for the same year as the data). Value= . indicates missing or suppressed data or value not calculated.

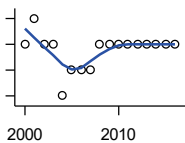
**Business**

**ESTABLISHMENTS: 1-19  
EMPLOYEES**



U.S. Census Bureau, County Business Patterns. Beginning with the 2017 data, any tabulation with fewer than 3 establishments were omitted from the release. Data for these establishments are included in the broader total.

Year	County	State of Kansas	Non Metro Kansas	County Rank	Per 1000 or \$ Per Capita
2000	83	64,527	25,381	95	38.5
2001	81	64,176	25,248	96	38.5
2002	80	64,886	25,208	96	40.4
2003	79	64,714	25,020	96	40.4
2004	72	65,554	24,995	100	37.6
2005	70	65,796	24,839	101	37.9
2006	61	65,764	24,589	101	34.3
2007	69	66,446	24,701	100	39.1
2008	70	65,322	24,257	99	39.9
2009	67	64,128	23,851	100	37.7
2010	74	64,015	23,857	98	42.3
2011	70	63,251	23,571	98	40.2
2012	66	63,519	23,575	99	39.2
2013	63	63,197	23,396	99	37.1
2014	63	63,113	23,229	99	37.8
2015	61	63,280	23,227	101	37.4
2016	62	63,630	23,117	97	38.9
2017	64	63,619	23,022	97	41.3
2018	59	63,233	22,745	100	38.2
2019	61	62,904	22,489	97	39.7
2020	57	62,634	22,173	100	36.2



**ESTABLISHMENTS: 20-99  
EMPLOYEES**

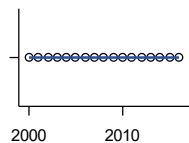
U.S. Census Bureau, County Business Patterns. Beginning with the 2017 data, any tabulation with fewer than 3 establishments were omitted from the release. Data for these establishments are included in the broader total.

Year	County	State of Kansas	Non Metro Kansas	County Rank	Per 1000 or \$ Per Capita
2000	3	8,714	2,653	101	1.4
2001	4	8,692	2,593	95	1.9
2002	3	8,582	2,554	98	1.5
2003	3	8,642	2,568	101	1.5
2004	1	8,658	2,590	105	0.5
2005	2	8,685	2,553	104	1.1
2006	2	8,922	2,612	103	1.1
2007	2	8,938	2,574	104	1.1
2008	3	8,939	2,587	99	1.7
2009	3	8,848	2,551	97	1.7
2010	3	8,612	2,454	101	1.7
2011	3	8,668	2,540	100	1.7
2012	3	8,700	2,500	99	1.8
2013	3	8,870	2,541	100	1.8
2014	3	9,121	2,590	99	1.8
2015	3	9,374	2,664	101	1.8
2016	3	9,412	2,596	102	1.9

County: county value. Kansas: state value. County Rank: highest county value ranked #1. (\$000): thousands of dollars. Nonmetro Kansas: Kansas total less Metropolitan Areas as defined by the Office of Management and Budget (OMB; released 3/6/2020). Per 1000: For nonmoney amounts, Per 1000=(county value / county population for the same year as the data) x 1000. \$ Per capita=(county value / county population for the same year as the data). Value= . indicates missing or suppressed data or value not calculated.

**Business**

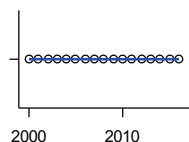
**ESTABLISHMENTS: 100-499 EMPLOYEES**



U.S. Census Bureau, County Business Patterns. Beginning with the 2017 data, any tabulation with fewer than 3 establishments were omitted from the release. Data for these establishments are included in the broader total.

Year	County	State of Kansas	Non Metro Kansas	County Rank	Per 1000 or \$ Per Capita
2000	0	1,555	409	105	0.0
2001	0	1,555	406	105	0.0
2002	0	1,464	386	105	0.0
2003	0	1,470	378	105	0.0
2004	0	1,463	388	105	0.0
2005	0	1,537	400	105	0.0
2006	0	1,598	407	105	0.0
2007	0	1,602	416	105	0.0
2008	0	1,653	421	105	0.0
2009	0	1,551	394	105	0.0
2010	0	1,513	382	105	0.0
2011	0	1,523	395	105	0.0
2012	0	1,567	410	105	0.0
2013	0	1,581	407	105	0.0
2014	0	1,641	421	105	0.0
2015	0	1,693	414	105	0.0
2016	0	1,671	406	105	0.0

**ESTABLISHMENTS: 500 OR MORE EMPLOYEES**



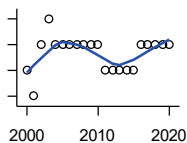
U.S. Census Bureau, County Business Patterns. Beginning with the 2017 data, any tabulation with fewer than 3 establishments were omitted from the release. Data for these establishments are included in the broader total.

Year	County	State of Kansas	Non Metro Kansas	County Rank	Per 1000 or \$ Per Capita
2000	0	143	32	105	0.0
2001	0	142	35	105	0.0
2002	0	145	35	105	0.0
2003	0	146	32	105	0.0
2004	0	152	36	105	0.0
2005	0	155	38	105	0.0
2006	0	162	45	105	0.0
2007	0	171	45	105	0.0
2008	0	182	49	105	0.0
2009	0	171	43	105	0.0
2010	0	161	46	105	0.0
2011	0	156	49	105	0.0
2012	0	158	49	105	0.0
2013	0	168	49	105	0.0
2014	0	180	52	105	0.0
2015	0	179	50	105	0.0
2016	0	171	53	105	0.0

County: county value. Kansas: state value. County Rank: highest county value ranked #1. (\$000): thousands of dollars. Nonmetro Kansas: Kansas total less Metropolitan Areas as defined by the Office of Management and Budget (OMB; released 3/6/2020). Per 1000: For nonmoney amounts, Per 1000=(county value / county population for the same year as the data) x 1000. \$ Per capita=(county value / county population for the same year as the data). Value= . indicates missing or suppressed data or value not calculated.

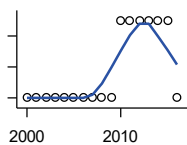
**Business**

**ESTABLISHMENTS: FORESTRY, FISHING, HUNTING, AND AG SUPPORT**



U.S. Census Bureau, County Business Patterns. Beginning with the 2017 data, any tabulation with fewer than 3 establishments were omitted from the release. Data for these establishments are included in the broader total.

Year	County	State of Kansas	Non Metro Kansas	County Rank	Per 1000 or \$ Per Capita
2000	2	190	149	43	0.9
2001	1	217	168	80	0.5
2002	3	224	176	30	1.5
2003	4	217	173	19	2.0
2004	3	211	165	29	1.6
2005	3	188	148	28	1.6
2006	3	193	158	24	1.7
2007	3	212	170	29	1.7
2008	3	197	158	29	1.7
2009	3	191	154	28	1.7
2010	3	192	161	26	1.7
2011	2	193	157	50	1.1
2012	2	204	164	50	1.2
2013	2	208	166	54	1.2
2014	2	194	152	55	1.2
2015	2	192	149	51	1.2
2016	3	181	142	23	1.9
2017	3	194	.	26	1.9
2018	3	195	.	26	1.9
2019	3	185	.	26	2.0
2020	3	181	.	25	1.9



**ESTABLISHMENTS: MINING**

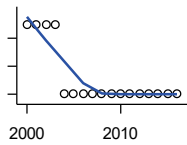
U.S. Census Bureau, County Business Patterns. Beginning with the 2017 data, any tabulation with fewer than 3 establishments were omitted from the release. Data for these establishments are included in the broader total.

Year	County	State of Kansas	Non Metro Kansas	County Rank	Per 1000 or \$ Per Capita
2000	1	868	619	88	0.5
2001	1	878	622	88	0.5
2002	1	847	615	89	0.5
2003	1	864	633	88	0.5
2004	1	880	647	87	0.5
2005	1	941	695	88	0.5
2006	1	991	734	88	0.6
2007	1	1,000	759	88	0.6
2008	1	1,047	799	90	0.6
2009	1	1,016	772	90	0.6
2010	2	1,009	762	72	1.1
2011	2	1,013	763	73	1.1
2012	2	1,048	789	74	1.2
2013	2	1,060	802	76	1.2
2014	2	1,102	828	76	1.2
2015	2	1,069	810	76	1.2
2016	1	990	747	93	0.6

County: county value. Kansas: state value. County Rank: highest county value ranked #1. (\$000): thousands of dollars. Nonmetro Kansas: Kansas total less Metropolitan Areas as defined by the Office of Management and Budget (OMB; released 3/6/2020). Per 1000: For nonmoney amounts, Per 1000=(county value / county population for the same year as the data) x 1000. \$ Per capita=(county value / county population for the same year as the data). Value= . indicates missing or suppressed data or value not calculated.

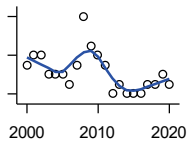
**Business**

**ESTABLISHMENTS: UTILITIES**



U.S. Census Bureau, County Business Patterns. Beginning with the 2017 data, any tabulation with fewer than 3 establishments were omitted from the release. Data for these establishments are included in the broader total.

Year	County	State of Kansas	Non Metro Kansas	County Rank	Per 1000 or \$ Per Capita
2000	3	274	192	37	1.4
2001	3	290	204	39	1.4
2002	3	278	195	38	1.5
2003	3	268	180	36	1.5
2004	2	247	164	59	1.0
2005	2	254	172	57	1.1
2006	2	248	169	58	1.1
2007	2	222	156	56	1.1
2008	2	244	166	61	1.1
2009	2	222	152	57	1.1
2010	2	197	129	49	1.1
2011	2	230	156	57	1.1
2012	2	232	156	57	1.2
2013	2	234	159	58	1.2
2014	2	232	160	58	1.2
2015	2	237	165	59	1.2
2016	2	245	171	60	1.3



**ESTABLISHMENTS: CONSTRUCTION**

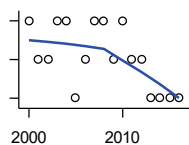
U.S. Census Bureau, County Business Patterns. Beginning with the 2017 data, any tabulation with fewer than 3 establishments were omitted from the release. Data for these establishments are included in the broader total.

Year	County	State of Kansas	Non Metro Kansas	County Rank	Per 1000 or \$ Per Capita
2000	5	7,703	2,616	98	2.3
2001	6	7,449	2,520	94	2.9
2002	6	7,519	2,482	97	3.0
2003	4	7,722	2,521	99	2.0
2004	4	7,887	2,518	99	2.1
2005	4	8,032	2,515	100	2.2
2006	3	8,031	2,494	101	1.7
2007	5	8,057	2,547	96	2.8
2008	10	7,831	2,522	80	5.7
2009	7	7,342	2,452	87	3.9
2010	6	7,064	2,394	93	3.4
2011	5	6,774	2,361	100	2.9
2012	2	6,741	2,393	104	1.2
2013	3	6,802	2,394	103	1.8
2014	2	6,920	2,383	104	1.2
2015	2	7,014	2,377	104	1.2
2016	2	6,988	2,343	104	1.3
2017	3	7,031	2,316	102	1.9
2018	3	7,124	2,285	102	1.9
2019	4	7,060	2,242	99	2.6
2020	3	7,089	2,249	102	1.9

County: county value. Kansas: state value. County Rank: highest county value ranked #1. (\$000): thousands of dollars. Nonmetro Kansas: Kansas total less Metropolitan Areas as defined by the Office of Management and Budget (OMB; released 3/6/2020). Per 1000: For nonmoney amounts, Per 1000=(county value / county population for the same year as the data) x 1000. \$ Per capita=(county value / county population for the same year as the data). Value= . indicates missing or suppressed data or value not calculated.

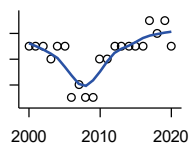
**Business**

**ESTABLISHMENTS:  
MANUFACTURING**



U.S. Census Bureau, County Business Patterns. Beginning with the 2017 data, any tabulation with fewer than 3 establishments were omitted from the release. Data for these establishments are included in the broader total.

Year	County	State of Kansas	Non Metro Kansas	County Rank	Per 1000 or \$ Per Capita
2000	3	3,229	1,316	92	1.4
2001	2	3,240	1,323	99	1.0
2002	2	3,181	1,289	99	1.0
2003	3	3,159	1,291	93	1.5
2004	3	3,179	1,313	93	1.6
2005	1	3,128	1,278	104	0.5
2006	2	3,165	1,290	98	1.1
2007	3	3,184	1,316	93	1.7
2008	3	3,171	1,297	95	1.7
2009	2	3,026	1,240	97	1.1
2010	3	2,955	1,222	93	1.7
2011	2	2,877	1,193	96	1.1
2012	2	2,889	1,197	96	1.2
2013	1	2,836	1,165	100	0.6
2014	1	2,831	1,168	101	0.6
2015	1	2,817	1,161	101	0.6
2016	1	2,791	1,150	100	0.6



**ESTABLISHMENTS: WHOLESALE  
TRADE**

U.S. Census Bureau, County Business Patterns. Beginning with the 2017 data, any tabulation with fewer than 3 establishments were omitted from the release. Data for these establishments are included in the broader total.

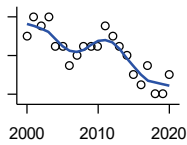
Year	County	State of Kansas	Non Metro Kansas	County Rank	Per 1000 or \$ Per Capita
2000	9	4,876	1,776	83	4.2
2001	9	4,811	1,769	84	4.3
2002	9	4,719	1,750	84	4.5
2003	8	4,590	1,637	87	4.1
2004	9	4,553	1,634	78	4.7
2005	9	4,541	1,618	81	4.9
2006	5	4,517	1,596	95	2.8
2007	6	4,555	1,629	94	3.4
2008	5	4,501	1,622	97	2.8
2009	5	4,437	1,614	97	2.8
2010	8	4,432	1,612	87	4.6
2011	8	4,400	1,660	88	4.6
2012	9	4,563	1,755	86	5.3
2013	9	4,501	1,741	85	5.3
2014	9	4,497	1,746	83	5.4
2015	9	4,459	1,755	84	5.5
2016	9	4,457	1,732	84	5.6
2017	11	4,436	1,774	72	7.1
2018	10	4,330	1,727	80	6.5
2019	11	4,291	1,713	70	7.2
2020	9	4,191	1,677	83	5.7

County: county value. Kansas: state value. County Rank: highest county value ranked #1. (\$000): thousands of dollars. Nonmetro Kansas: Kansas total less Metropolitan Areas as defined by the Office of Management and Budget (OMB; released 3/6/2020). Per 1000: For nonmoney amounts, Per 1000=(county value / county population for the same year as the data) x 1000. \$ Per capita=(county value / county population for the same year as the data). Value= . indicates missing or suppressed data or value not calculated.



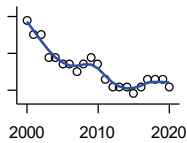
**Business**

**ESTABLISHMENTS: RETAIL TRADE**



U.S. Census Bureau, County Business Patterns. Beginning with the 2017 data, any tabulation with fewer than 3 establishments were omitted from the release. Data for these establishments are included in the broader total.

Year	County	State of Kansas	Non Metro Kansas	County Rank	Per 1000 or \$ Per Capita
2000	12	12,261	5,240	100	5.6
2001	14	12,206	5,207	99	6.7
2002	13	11,980	5,082	98	6.6
2003	14	11,834	5,049	98	7.2
2004	11	11,748	4,967	101	5.7
2005	11	11,562	4,834	99	6.0
2006	9	11,367	4,702	102	5.1
2007	10	11,306	4,653	100	5.7
2008	11	10,978	4,494	99	6.3
2009	11	10,760	4,372	96	6.2
2010	11	10,727	4,346	99	6.3
2011	13	10,655	4,289	96	7.5
2012	12	10,585	4,202	94	7.1
2013	11	10,433	4,147	96	6.5
2014	10	10,391	4,070	100	6.0
2015	8	10,327	4,061	103	4.9
2016	7	10,197	3,965	105	4.4
2017	9	10,074	3,885	100	5.8
2018	6	9,866	3,797	105	3.9
2019	6	9,762	3,750	105	3.9
2020	8	9,591	3,666	104	5.1



**ESTABLISHMENTS: TRANSPORTATION & WAREHOUSING**

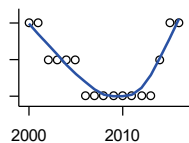
U.S. Census Bureau, County Business Patterns. Beginning with the 2017 data, any tabulation with fewer than 3 establishments were omitted from the release. Data for these establishments are included in the broader total.

Year	County	State of Kansas	Non Metro Kansas	County Rank	Per 1000 or \$ Per Capita
2000	12	2,474	1,293	57	5.6
2001	10	2,463	1,298	67	4.8
2002	10	2,461	1,278	69	5.0
2003	7	2,576	1,297	77	3.6
2004	7	2,651	1,324	75	3.7
2005	6	2,632	1,326	84	3.2
2006	6	2,626	1,295	83	3.4
2007	5	2,664	1,314	90	2.8
2008	6	2,675	1,329	83	3.4
2009	7	2,635	1,313	81	3.9
2010	6	2,615	1,313	85	3.4
2011	4	2,579	1,285	96	2.3
2012	3	2,519	1,243	99	1.8
2013	3	2,492	1,226	97	1.8
2014	3	2,518	1,240	99	1.8
2015	2	2,554	1,257	102	1.2
2016	3	2,567	1,241	99	1.9
2017	4	2,640	1,245	94	2.6
2018	4	2,627	1,238	94	2.6
2019	4	2,615	1,209	92	2.6
2020	3	2,589	1,179	99	1.9

County: county value. Kansas: state value. County Rank: highest county value ranked #1. (\$000): thousands of dollars. Nonmetro Kansas: Kansas total less Metropolitan Areas as defined by the Office of Management and Budget (OMB; released 3/6/2020). Per 1000: For nonmoney amounts, Per 1000=(county value / county population for the same year as the data) x 1000. \$ Per capita=(county value / county population for the same year as the data). Value= . indicates missing or suppressed data or value not calculated.

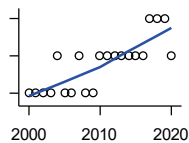
**Business**

**ESTABLISHMENTS: INFORMATION**



U.S. Census Bureau, County Business Patterns. Beginning with the 2017 data, any tabulation with fewer than 3 establishments were omitted from the release. Data for these establishments are included in the broader total.

Year	County	State of Kansas	Non Metro Kansas	County Rank	Per 1000 or \$ Per Capita
2000	2	1,542	578	98	0.9
2001	2	1,556	566	96	1.0
2002	1	1,517	551	100	0.5
2003	1	1,516	564	100	0.5
2004	1	1,518	556	101	0.5
2005	1	1,519	536	100	0.5
2006	0	1,549	559	105	0.0
2007	0	1,504	527	105	0.0
2008	0	1,468	522	105	0.0
2009	0	1,420	510	105	0.0
2010	0	1,437	527	105	0.0
2011	0	1,428	537	105	0.0
2012	0	1,387	515	105	0.0
2013	0	1,337	487	105	0.0
2014	1	1,335	496	103	0.6
2015	2	1,359	510	85	1.2
2016	2	1,431	537	85	1.3



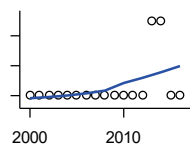
**ESTABLISHMENTS: FINANCE & INSURANCE**

U.S. Census Bureau, County Business Patterns. Beginning with the 2017 data, any tabulation with fewer than 3 establishments were omitted from the release. Data for these establishments are included in the broader total.

Year	County	State of Kansas	Non Metro Kansas	County Rank	Per 1000 or \$ Per Capita
2000	5	5,209	1,848	98	2.3
2001	5	5,178	1,828	97	2.4
2002	5	5,496	1,911	97	2.5
2003	5	5,569	1,907	98	2.6
2004	6	5,572	1,913	95	3.1
2005	5	5,708	1,964	98	2.7
2006	5	5,877	1,976	100	2.8
2007	6	6,017	2,030	100	3.4
2008	5	6,010	2,023	102	2.8
2009	5	5,933	1,994	102	2.8
2010	6	5,872	1,975	100	3.4
2011	6	5,854	1,985	99	3.4
2012	6	5,993	2,024	100	3.6
2013	6	5,903	1,993	99	3.5
2014	6	5,894	2,000	99	3.6
2015	6	5,932	1,998	100	3.7
2016	6	6,022	2,021	98	3.8
2017	7	6,026	2,007	91	4.5
2018	7	6,023	1,997	91	4.5
2019	7	5,953	1,977	91	4.6
2020	6	5,926	1,969	97	3.8

County: county value. Kansas: state value. County Rank: highest county value ranked #1. (\$000): thousands of dollars. Nonmetro Kansas: Kansas total less Metropolitan Areas as defined by the Office of Management and Budget (OMB; released 3/6/2020). Per 1000: For nonmoney amounts, Per 1000=(county value / county population for the same year as the data) x 1000. \$ Per capita=(county value / county population for the same year as the data). Value= . indicates missing or suppressed data or value not calculated.

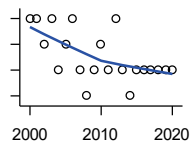
**Business**



**ESTABLISHMENTS: REAL ESTATE, RENTAL, AND LEASING**

U.S. Census Bureau, County Business Patterns. Beginning with the 2017 data, any tabulation with fewer than 3 establishments were omitted from the release. Data for these establishments are included in the broader total.

Year	County	State of Kansas	Non Metro Kansas	County Rank	Per 1000 or \$ Per Capita
2000	0	2,733	687	105	0.0
2001	0	2,849	724	105	0.0
2002	0	2,952	735	105	0.0
2003	0	3,007	727	105	0.0
2004	0	3,108	713	105	0.0
2005	0	3,203	727	105	0.0
2006	0	3,268	736	105	0.0
2007	0	3,286	721	105	0.0
2008	0	3,239	738	105	0.0
2009	0	3,122	723	105	0.0
2010	0	3,050	708	105	0.0
2011	0	3,002	692	105	0.0
2012	0	2,981	691	105	0.0
2013	1	3,046	717	87	0.6
2014	1	3,135	738	92	0.6
2015	0	3,179	744	105	0.0
2016	0	3,293	757	105	0.0



**ESTABLISHMENTS: PROFESSIONAL, SCIENTIFIC, AND TECHNICAL SERVICES**

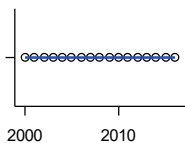
U.S. Census Bureau, County Business Patterns. Beginning with the 2017 data, any tabulation with fewer than 3 establishments were omitted from the release. Data for these establishments are included in the broader total.

Year	County	State of Kansas	Non Metro Kansas	County Rank	Per 1000 or \$ Per Capita
2000	6	6,424	1,690	85	2.8
2001	6	6,492	1,665	86	2.9
2002	5	6,719	1,704	93	2.5
2003	6	6,793	1,735	86	3.1
2004	4	7,025	1,730	100	2.1
2005	5	7,087	1,711	97	2.7
2006	6	7,231	1,736	90	3.4
2007	4	7,329	1,729	101	2.3
2008	3	7,133	1,671	103	1.7
2009	4	7,122	1,676	102	2.2
2010	5	7,172	1,680	96	2.9
2011	4	7,115	1,668	99	2.3
2012	6	7,122	1,681	91	3.6
2013	4	7,129	1,698	97	2.4
2014	3	7,206	1,682	103	1.8
2015	4	7,184	1,687	98	2.5
2016	4	7,146	1,659	96	2.5
2017	4	7,224	1,679	99	2.6
2018	4	7,138	1,655	95	2.6
2019	4	7,119	.	96	2.6
2020	4	7,117	.	94	2.5

County: county value. Kansas: state value. County Rank: highest county value ranked #1. (\$000): thousands of dollars. Nonmetro Kansas: Kansas total less Metropolitan Areas as defined by the Office of Management and Budget (OMB; released 3/6/2020). Per 1000: For nonmoney amounts, Per 1000=(county value / county population for the same year as the data) x 1000. \$ Per capita=(county value / county population for the same year as the data). Value= . indicates missing or suppressed data or value not calculated.

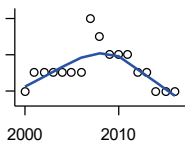
**Business**

**ESTABLISHMENTS: MANAGEMENT OF COMPANIES AND ENTERPRISES**



U.S. Census Bureau, County Business Patterns. Beginning with the 2017 data, any tabulation with fewer than 3 establishments were omitted from the release. Data for these establishments are included in the broader total.

Year	County	State of Kansas	Non Metro Kansas	County Rank	Per 1000 or \$ Per Capita
2000	0	622	145	105	0.0
2001	0	593	141	105	0.0
2002	0	597	152	105	0.0
2003	0	561	135	105	0.0
2004	0	569	133	105	0.0
2005	0	543	127	105	0.0
2006	0	542	131	105	0.0
2007	0	550	133	105	0.0
2008	0	553	139	105	0.0
2009	0	575	136	105	0.0
2010	0	567	131	105	0.0
2011	0	552	134	105	0.0
2012	0	593	135	105	0.0
2013	0	590	135	105	0.0
2014	0	603	136	105	0.0
2015	0	613	140	105	0.0
2016	0	655	171	105	0.0



**ESTABLISHMENTS: ADMIN, SUPPORT, WASTE MGMT., AND REMEDIATION**

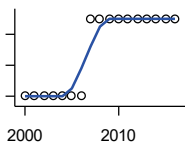
U.S. Census Bureau, County Business Patterns. Beginning with the 2017 data, any tabulation with fewer than 3 establishments were omitted from the release. Data for these establishments are included in the broader total.

Year	County	State of Kansas	Non Metro Kansas	County Rank	Per 1000 or \$ Per Capita
2000	1	3,307	871	101	0.5
2001	2	3,421	913	88	1.0
2002	2	3,232	882	89	1.0
2003	2	3,189	858	88	1.0
2004	2	3,301	891	92	1.0
2005	2	3,342	896	91	1.1
2006	2	3,395	886	93	1.1
2007	5	3,522	921	67	2.8
2008	4	3,587	932	75	2.3
2009	3	3,505	904	85	1.7
2010	3	3,494	897	83	1.7
2011	3	3,447	903	81	1.7
2012	2	3,462	891	90	1.2
2013	2	3,489	904	90	1.2
2014	1	3,569	933	98	0.6
2015	1	3,630	964	97	0.6
2016	1	3,705	987	99	0.6

County: county value. Kansas: state value. County Rank: highest county value ranked #1. (\$000): thousands of dollars. Nonmetro Kansas: Kansas total less Metropolitan Areas as defined by the Office of Management and Budget (OMB; released 3/6/2020). Per 1000: For nonmoney amounts, Per 1000=(county value / county population for the same year as the data) x 1000. \$ Per capita=(county value / county population for the same year as the data). Value= . indicates missing or suppressed data or value not calculated.

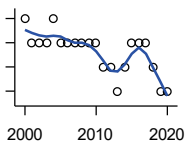
**Business**

**ESTABLISHMENTS: EDUCATIONAL SERVICES**



U.S. Census Bureau, County Business Patterns. Beginning with the 2017 data, any tabulation with fewer than 3 establishments were omitted from the release. Data for these establishments are included in the broader total.

Year	County	State of Kansas	Non Metro Kansas	County Rank	Per 1000 or \$ Per Capita
2000	0	604	155	105	0.0
2001	0	625	168	105	0.0
2002	0	666	165	105	0.0
2003	0	663	173	105	0.0
2004	0	690	173	105	0.0
2005	0	699	168	105	0.0
2006	0	698	175	105	0.0
2007	1	691	165	68	0.6
2008	1	692	158	67	0.6
2009	1	690	150	66	0.6
2010	1	700	149	68	0.6
2011	1	711	150	66	0.6
2012	1	724	145	67	0.6
2013	1	735	153	68	0.6
2014	1	722	152	66	0.6
2015	1	754	152	66	0.6
2016	1	728	150	66	0.6



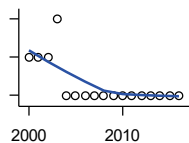
**ESTABLISHMENTS: HEALTH CARE AND SOCIAL ASSISTANCE**

U.S. Census Bureau, County Business Patterns. Beginning with the 2017 data, any tabulation with fewer than 3 establishments were omitted from the release. Data for these establishments are included in the broader total.

Year	County	State of Kansas	Non Metro Kansas	County Rank	Per 1000 or \$ Per Capita
2000	6	6,564	2,591	96	2.8
2001	5	6,636	2,590	98	2.4
2002	5	7,052	2,777	101	2.5
2003	5	7,129	2,792	101	2.6
2004	6	7,239	2,813	98	3.1
2005	5	7,412	2,855	101	2.7
2006	5	7,477	2,860	101	2.8
2007	5	7,661	2,864	101	2.8
2008	5	7,651	2,810	101	2.8
2009	5	7,696	2,787	100	2.8
2010	5	7,751	2,830	101	2.9
2011	4	7,804	2,817	102	2.3
2012	4	7,973	2,793	102	2.4
2013	3	7,877	2,729	104	1.8
2014	4	7,809	2,686	101	2.4
2015	5	8,103	2,692	99	3.1
2016	5	8,315	2,678	100	3.1
2017	5	8,136	2,646	97	3.2
2018	4	8,126	2,632	102	2.6
2019	3	8,184	2,587	103	2.0
2020	3	8,290	2,571	104	1.9

County: county value. Kansas: state value. County Rank: highest county value ranked #1. (\$000): thousands of dollars. Nonmetro Kansas: Kansas total less Metropolitan Areas as defined by the Office of Management and Budget (OMB; released 3/6/2020). Per 1000: For nonmoney amounts, Per 1000=(county value / county population for the same year as the data) x 1000. \$ Per capita=(county value / county population for the same year as the data). Value= . indicates missing or suppressed data or value not calculated.

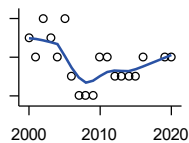
**Business**



**ESTABLISHMENTS: ARTS, ENTERTAINMENT, AND RECREATION**

U.S. Census Bureau, County Business Patterns. Beginning with the 2017 data, any tabulation with fewer than 3 establishments were omitted from the release. Data for these establishments are included in the broader total.

Year	County	State of Kansas	Non Metro Kansas	County Rank	Per 1000 or \$ Per Capita
2000	3	981	419	69	1.4
2001	3	1,009	433	71	1.4
2002	3	1,054	441	70	1.5
2003	4	1,045	443	55	2.0
2004	2	1,082	445	85	1.0
2005	2	1,109	446	86	1.1
2006	2	1,080	445	86	1.1
2007	2	1,092	444	86	1.1
2008	2	1,062	423	83	1.1
2009	2	1,063	421	83	1.1
2010	2	1,018	406	87	1.1
2011	2	997	387	89	1.1
2012	2	1,000	388	86	1.2
2013	2	1,009	377	84	1.2
2014	2	1,030	365	83	1.2
2015	2	1,031	357	83	1.2
2016	2	1,060	366	82	1.3



**ESTABLISHMENTS: ACCOMMODATION AND FOOD SERVICES**

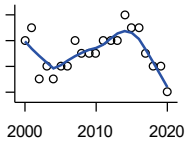
U.S. Census Bureau, County Business Patterns. Beginning with the 2017 data, any tabulation with fewer than 3 establishments were omitted from the release. Data for these establishments are included in the broader total.

Year	County	State of Kansas	Non Metro Kansas	County Rank	Per 1000 or \$ Per Capita
2000	4	5,536	2,213	101	1.9
2001	3	5,551	2,173	104	1.4
2002	5	5,610	2,174	101	2.5
2003	4	5,635	2,188	103	2.0
2004	3	5,681	2,160	104	1.6
2005	5	5,776	2,170	99	2.7
2006	2	5,745	2,132	105	1.1
2007	1	5,877	2,095	105	0.6
2008	1	5,843	2,052	105	0.6
2009	1	5,794	2,029	105	0.6
2010	3	5,898	2,046	104	1.7
2011	3	5,958	2,067	104	1.7
2012	2	5,951	2,046	105	1.2
2013	2	6,061	2,070	104	1.2
2014	2	5,985	2,024	104	1.2
2015	2	6,034	2,063	104	1.2
2016	3	6,126	2,094	100	1.9
2019	3	6,231	2,131	102	2.0
2020	3	6,206	2,131	103	1.9

County: county value. Kansas: state value. County Rank: highest county value ranked #1. (\$000): thousands of dollars. Nonmetro Kansas: Kansas total less Metropolitan Areas as defined by the Office of Management and Budget (OMB; released 3/6/2020). Per 1000: For nonmoney amounts, Per 1000=(county value / county population for the same year as the data) x 1000. \$ Per capita=(county value / county population for the same year as the data). Value= . indicates missing or suppressed data or value not calculated.

**Business**

**ESTABLISHMENTS: OTHER SERVICES**

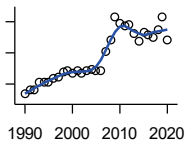


U.S. Census Bureau, County Business Patterns. Beginning with the 2017 data, any tabulation with fewer than 3 establishments were omitted from the release. Data for these establishments are included in the broader total.

Year	County	State of Kansas	Non Metro Kansas	County Rank	Per 1000 or \$ Per Capita
2000	12	8,423	3,636	94	5.6
2001	13	8,310	3,614	93	6.2
2002	9	8,552	3,658	102	4.5
2003	10	8,411	3,605	103	5.1
2004	9	8,343	3,597	103	4.7
2005	10	8,321	3,571	102	5.4
2006	10	8,225	3,490	99	5.6
2007	12	8,355	3,534	97	6.8
2008	11	8,104	3,406	97	6.3
2009	11	8,040	3,405	98	6.2
2010	11	7,998	3,379	99	6.3
2011	12	7,883	3,294	96	6.9
2012	12	7,913	3,303	93	7.1
2013	12	7,947	3,290	93	7.1
2014	14	7,943	3,285	88	8.4
2015	13	7,869	3,255	90	8.0
2016	13	7,839	3,204	90	8.2
2017	11	7,873	3,189	95	7.1
2018	10	7,853	3,176	97	6.5
2019	10	7,834	3,138	97	6.5
2020	8	7,787	3,073	101	5.1

County: county value. Kansas: state value. County Rank: highest county value ranked #1. (\$000): thousands of dollars. Nonmetro Kansas: Kansas total less Metropolitan Areas as defined by the Office of Management and Budget (OMB; released 3/6/2020). Per 1000: For nonmoney amounts, Per 1000=(county value / county population for the same year as the data) x 1000. \$ Per capita=(county value / county population for the same year as the data). Value= . indicates missing or suppressed data or value not calculated.

**Business**



**TOTAL ANNUAL PAYROLL (\$000)  
COUNTY BUSINESS PATTERNS**

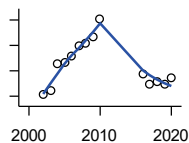
U.S. Census Bureau, County Business Patterns. Beginning with the 2017 data, any tabulation with fewer than 3 establishments were omitted from the release. Data for these establishments are included in the broader total.

Year	County	State of Kansas	Non Metro Kansas	County Rank	Per 1000 or \$ Per Capita
1990	4,693	17,487,316	4,442,429	96	1,976.0
1991	5,181	18,162,326	4,612,616	96	2,224.6
1992	5,181	19,244,346	4,882,060	99	2,250.7
1993	6,293	20,087,190	5,182,780	99	2,729.0
1994	6,207	21,201,652	5,541,423	100	2,678.9
1995	6,262	22,825,920	5,875,310	99	2,750.1
1996	6,697	24,613,884	6,198,398	99	3,016.7
1997	6,847	26,787,098	6,599,061	99	3,127.9
1998	7,507	28,747,576	6,871,794	99	3,335.0
1999	7,787	30,600,434	7,121,961	98	3,572.0
2000	7,365	31,990,762	7,520,424	99	3,417.6
2001	7,660	33,303,992	7,598,165	99	3,640.7
2002	7,372	33,152,962	7,572,002	99	3,721.4
2003	7,710	34,040,944	7,726,561	99	3,941.7
2004	7,847	35,725,812	8,303,779	99	4,095.5
2005	7,664	36,646,064	8,586,986	100	4,147.2
2006	7,773	39,251,388	9,178,947	100	4,366.9
2007	10,169	42,022,753	.	96	5,768.0
2008	11,613	43,984,689	.	96	6,613.3
2009	14,625	42,146,866	.	91	8,220.9
2010	13,781	42,686,303	10,294,015	94	7,874.9
2011	13,532	43,733,944	.	94	7,763.6
2012	13,689	45,608,072	11,222,183	94	8,128.9
2013	12,534	47,715,601	11,446,751	96	7,381.6
2014	11,455	49,712,832	11,957,931	99	6,875.8
2015	12,712	51,259,676	11,975,718	99	7,798.8
2016	12,255	51,016,318	12,148,646	101	7,693.0
2017	12,017	52,754,605	12,448,592	101	7,762.9
2018	12,962	55,087,460	12,810,270	98	8,384.2
2019	14,621	57,272,387	13,123,288	97	9,525.1
2020	11,671	58,374,388	14,007,955	102	7,414.9

County: county value. Kansas: state value. County Rank: highest county value ranked #1. (\$000): thousands of dollars. Nonmetro Kansas: Kansas total less Metropolitan Areas as defined by the Office of Management and Budget (OMB; released 3/6/2020). Per 1000: For nonmoney amounts, Per 1000=(county value / county population for the same year as the data) x 1000. \$ Per capita=(county value / county population for the same year as the data). Value= . indicates missing or suppressed data or value not calculated.



**Business**



**TOTAL ANNUAL PAYROLL(\$000):  
FORESTRY, FISHING, HUNTING, AND  
AG SUPPORT**

U.S. Census Bureau, County Business Patterns. Beginning with the 2017 data, any tabulation with fewer than 3 establishments were omitted from the release. Data for these establishments are included in the broader total.

Year	County	State of Kansas	Non Metro Kansas	County Rank	Per 1000 or \$ Per Capita
2000	.	13,551	.	.	.
2001	.	.	.	.	.
2002	217	16,528	.	.	109.5
2003	246	17,247	.	.	125.8
2004	452	17,552	.	.	235.9
2005	464	16,298	.	.	251.1
2006	515	17,908	.	.	289.3
2007	595	22,199	.	.	337.5
2008	621	21,359	.	.	353.6
2009	665	22,466	.	.	373.8
2010	809	22,753	.	.	462.3
2011	.	23,320	.	.	.
2012	.	27,492	.	.	.
2013	.	30,360	.	.	.
2014	.	34,862	.	.	.
2015	.	35,980	.	.	.
2016	380	31,488	.	.	238.5
2017	293	34,117	.	.	189.3
2018	315	37,960	.	.	203.8
2019	292	39,558	.	.	190.2
2020	346	44,008	.	.	219.8

**TOTAL ANNUAL PAYROLL(\$000):  
MINING**

U.S. Census Bureau, County Business Patterns. Beginning with the 2017 data, any tabulation with fewer than 3 establishments were omitted from the release. Data for these establishments are included in the broader total.

Year	County	State of Kansas	Non Metro Kansas	County Rank	Per 1000 or \$ Per Capita
2000	.	240,079	.	.	.
2001	.	273,838	.	.	.
2002	.	262,277	.	.	.
2003	.	290,652	.	.	.
2004	.	326,997	.	.	.
2005	.	381,069	.	.	.
2006	.	482,102	.	.	.
2007	.	551,751	.	.	.
2008	.	620,446	.	.	.
2009	.	465,070	.	.	.
2010	.	485,841	.	.	.
2011	.	541,536	.	.	.
2012	.	600,402	.	.	.
2013	.	599,788	.	.	.
2014	.	678,673	.	.	.
2015	.	552,658	.	.	.

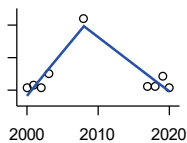
County: county value. Kansas: state value. County Rank: highest county value ranked #1. (\$000): thousands of dollars. Nonmetro Kansas: Kansas total less Metropolitan Areas as defined by the Office of Management and Budget (OMB; released 3/6/2020). Per 1000: For nonmoney amounts, Per 1000=(county value / county population for the same year as the data) x 1000. \$ Per capita=(county value / county population for the same year as the data). Value= . indicates missing or suppressed data or value not calculated.

**Business**

**TOTAL ANNUAL PAYROLL(\$000):  
UTILITIES**

U.S. Census Bureau, County Business Patterns. Beginning with the 2017 data, any tabulation with fewer than 3 establishments were omitted from the release. Data for these establishments are included in the broader total.

Year	County	State of Kansas	Non Metro Kansas	County Rank	Per 1000 or \$ Per Capita
2000	.	410,313	.	.	.
2001	.	452,057	.	.	.
2002	.	377,559	.	.	.
2003	.	378,157	.	.	.
2004	.	377,809	.	.	.
2005	.	429,864	.	.	.
2006	.	443,999	.	.	.
2007	.	480,068	.	.	.
2008	.	541,066	.	.	.
2009	.	563,373	.	.	.
2010	.	512,628	.	.	.
2011	.	653,229	.	.	.
2012	.	625,451	.	.	.
2013	.	625,347	.	.	.
2014	.	610,960	.	.	.
2015	.	668,559	.	.	.



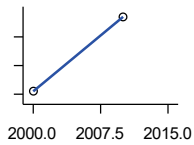
**TOTAL ANNUAL PAYROLL(\$000):  
CONSTRUCTION**

U.S. Census Bureau, County Business Patterns. Beginning with the 2017 data, any tabulation with fewer than 3 establishments were omitted from the release. Data for these establishments are included in the broader total.

Year	County	State of Kansas	Non Metro Kansas	County Rank	Per 1000 or \$ Per Capita
2000	66	2,256,057	.	.	30.6
2001	141	2,320,652	.	.	67.0
2002	61	2,302,229	.	.	30.8
2003	524	2,282,021	.	.	267.9
2004	.	2,302,854	.	.	.
2005	.	2,465,977	.	.	.
2006	.	2,700,351	.	.	.
2007	.	2,772,168	.	.	.
2008	2,203	2,950,073	.	.	1,254.6
2009	.	2,709,864	.	.	.
2010	.	2,553,555	.	.	.
2011	.	2,550,355	.	.	.
2012	.	2,733,284	.	.	.
2013	.	2,866,801	.	.	.
2014	.	3,135,814	.	.	.
2015	.	3,270,952	.	.	.
2017	95	3,568,505	.	.	61.4
2018	122	3,806,196	.	.	78.9
2019	429	3,879,912	.	.	279.5
2020	85	3,983,029	.	.	54.0

County: county value. Kansas: state value. County Rank: highest county value ranked #1. (\$000): thousands of dollars. Nonmetro Kansas: Kansas total less Metropolitan Areas as defined by the Office of Management and Budget (OMB; released 3/6/2020). Per 1000: For nonmoney amounts, Per 1000=(county value / county population for the same year as the data) x 1000. \$ Per capita=(county value / county population for the same year as the data). Value= . indicates missing or suppressed data or value not calculated.

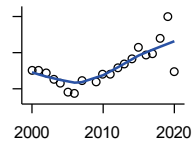
**Business**



**TOTAL ANNUAL PAYROLL(\$000):  
MANUFACTURING**

U.S. Census Bureau, County Business Patterns. Beginning with the 2017 data, any tabulation with fewer than 3 establishments were omitted from the release. Data for these establishments are included in the broader total.

Year	County	State of Kansas	Non Metro Kansas	County Rank	Per 1000 or \$ Per Capita
2000	76	7,015,414	.	.	35.3
2001	.	7,301,706	.	.	.
2002	.	6,802,605	.	.	.
2003	.	6,691,611	.	.	.
2004	.	6,985,656	.	.	.
2005	.	7,221,614	.	.	.
2006	.	7,621,873	.	.	.
2007	.	7,873,359	.	.	.
2008	.	8,441,541	.	.	.
2009	.	7,477,838	.	.	.
2010	102	7,556,955	.	.	58.3
2011	.	7,747,934	.	.	.
2012	.	7,704,851	.	.	.
2013	.	8,365,542	.	.	.
2014	.	8,787,306	.	.	.
2015	.	9,052,105	.	.	.



**TOTAL ANNUAL PAYROLL(\$000):  
WHOLESALE TRADE**

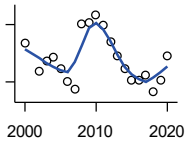
U.S. Census Bureau, County Business Patterns. Beginning with the 2017 data, any tabulation with fewer than 3 establishments were omitted from the release. Data for these establishments are included in the broader total.

Year	County	State of Kansas	Non Metro Kansas	County Rank	Per 1000 or \$ Per Capita
2000	2,022	2,332,755	.	.	938.3
2001	2,046	2,283,169	.	.	972.4
2002	1,849	2,107,653	.	.	933.4
2003	1,523	2,622,701	.	.	778.6
2004	1,331	2,663,196	.	.	694.7
2005	831	2,345,990	.	.	449.7
2006	717	2,592,211	.	.	402.8
2007	1,437	2,682,542	.	.	815.1
2008	.	3,078,655	.	.	.
2009	1,347	2,940,949	.	.	757.2
2010	1,792	3,097,628	.	.	1,024.0
2011	1,789	3,305,811	.	.	1,026.4
2012	2,135	3,339,997	.	.	1,267.8
2013	2,376	3,460,512	.	.	1,399.3
2014	2,638	3,712,075	.	.	1,583.4
2015	3,304	3,760,189	.	.	2,027.0
2016	2,891	3,738,207	.	.	1,814.8
2017	2,950	3,822,730	.	.	1,905.7
2018	3,786	3,814,353	.	.	2,448.9
2019	4,993	4,025,802	.	.	3,252.8
2020	1,957	4,224,666	.	.	1,243.3

County: county value. Kansas: state value. County Rank: highest county value ranked #1. (\$000): thousands of dollars. Nonmetro Kansas: Kansas total less Metropolitan Areas as defined by the Office of Management and Budget (OMB; released 3/6/2020). Per 1000: For nonmoney amounts, Per 1000=(county value / county population for the same year as the data) x 1000. \$ Per capita=(county value / county population for the same year as the data). Value= . indicates missing or suppressed data or value not calculated.

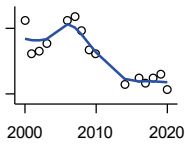
**Business**

**TOTAL ANNUAL PAYROLL(\$000):  
RETAIL TRADE**



U.S. Census Bureau, County Business Patterns. Beginning with the 2017 data, any tabulation with fewer than 3 establishments were omitted from the release. Data for these establishments are included in the broader total.

Year	County	State of Kansas	Non Metro Kansas	County Rank	Per 1000 or \$ Per Capita
2000	800	2,747,001	.	.	371.2
2001	.	2,813,226	.	.	.
2002	659	2,854,231	.	.	332.7
2003	712	2,773,674	.	.	364.0
2004	731	2,847,826	.	.	381.5
2005	666	2,952,196	.	.	360.4
2006	604	3,126,495	.	.	339.3
2007	560	3,201,169	.	.	317.6
2008	902	3,261,054	.	.	513.7
2009	910	3,232,246	.	.	511.5
2010	951	3,321,838	.	.	543.4
2011	899	3,384,607	.	.	515.8
2012	808	3,409,755	.	.	479.8
2013	738	3,483,752	.	.	434.6
2014	668	3,617,933	.	.	401.0
2015	608	3,712,165	.	.	373.0
2016	607	3,826,889	.	.	381.0
2017	635	3,797,849	.	.	410.2
2018	546	3,818,988	.	.	353.2
2019	612	3,908,994	.	.	398.7
2020	738	3,984,443	.	.	468.9



**TOTAL ANNUAL PAYROLL(\$000):  
TRANSPORTATION &  
WAREHOUSING**

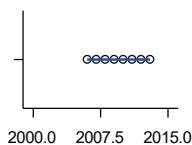
U.S. Census Bureau, County Business Patterns. Beginning with the 2017 data, any tabulation with fewer than 3 establishments were omitted from the release. Data for these establishments are included in the broader total.

Year	County	State of Kansas	Non Metro Kansas	County Rank	Per 1000 or \$ Per Capita
2000	437	1,044,835	.	.	202.8
2001	285	1,089,405	.	.	135.5
2002	296	1,094,636	.	.	149.4
2003	330	1,316,655	.	.	168.7
2004	.	1,439,800	.	.	.
2005	.	1,393,651	.	.	.
2006	438	1,528,551	.	.	246.1
2007	454	1,788,267	.	.	257.5
2008	388	1,722,697	.	.	221.0
2009	302	1,618,598	.	.	169.8
2010	283	1,735,761	.	.	161.7
2011	.	1,739,165	.	.	.
2012	.	1,984,976	.	.	.
2013	.	2,006,261	.	.	.
2014	142	2,097,377	.	.	85.2
2015	.	2,190,072	.	.	.
2016	170	2,202,859	.	.	106.7
2017	149	2,546,061	.	.	96.3
2018	171	2,663,188	.	.	110.6
2019	189	2,879,406	.	.	123.1
2020	118	2,962,461	.	.	75.0

County: county value. Kansas: state value. County Rank: highest county value ranked #1. (\$000): thousands of dollars. Nonmetro Kansas: Kansas total less Metropolitan Areas as defined by the Office of Management and Budget (OMB; released 3/6/2020). Per 1000: For nonmoney amounts, Per 1000=(county value / county population for the same year as the data) x 1000. \$ Per capita=(county value / county population for the same year as the data). Value= . indicates missing or suppressed data or value not calculated.

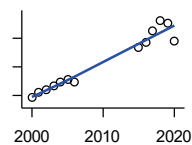
**Business**

**TOTAL ANNUAL PAYROLL(\$000):  
INFORMATION**



U.S. Census Bureau, County Business Patterns. Beginning with the 2017 data, any tabulation with fewer than 3 establishments were omitted from the release. Data for these establishments are included in the broader total.

Year	County	State of Kansas	Non Metro Kansas	County Rank	Per 1000 or \$ Per Capita
2000	.	1,923,381	.	.	.
2001	.	2,218,610	.	.	.
2002	.	2,298,108	.	.	.
2003	.	2,378,673	.	.	.
2004	.	2,392,990	.	.	.
2005	.	2,395,081	.	.	.
2006	0	2,586,483	.	.	0.0
2007	0	2,594,138	.	.	0.0
2008	0	3,043,244	.	.	0.0
2009	0	3,045,570	.	.	0.0
2010	0	2,481,580	.	.	0.0
2011	0	2,513,805	.	.	0.0
2012	0	2,535,555	.	.	0.0
2013	0	2,805,017	.	.	0.0
2014	.	2,393,609	.	.	.
2015	.	2,406,323	.	.	.



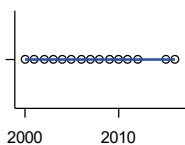
**TOTAL ANNUAL PAYROLL(\$000):  
FINANCE & INSURANCE**

U.S. Census Bureau, County Business Patterns. Beginning with the 2017 data, any tabulation with fewer than 3 establishments were omitted from the release. Data for these establishments are included in the broader total.

Year	County	State of Kansas	Non Metro Kansas	County Rank	Per 1000 or \$ Per Capita
2000	1,183	2,083,565	.	.	549.0
2001	1,223	2,129,587	.	.	581.3
2002	1,240	2,414,120	.	.	625.9
2003	1,265	2,608,579	.	.	646.7
2004	1,295	2,676,910	.	.	675.9
2005	1,311	2,786,136	.	.	709.4
2006	1,292	2,928,931	.	.	725.8
2007	.	3,096,017	.	.	.
2008	.	3,322,977	.	.	.
2009	.	3,206,839	.	.	.
2010	.	3,211,300	.	.	.
2011	.	3,404,633	.	.	.
2012	.	3,611,165	.	.	.
2013	.	3,896,051	.	.	.
2014	.	4,044,315	.	.	.
2015	1,539	4,113,060	.	.	944.2
2016	1,567	4,180,740	.	.	983.7
2017	1,648	4,258,057	.	.	1,064.6
2018	1,724	4,682,552	.	.	1,115.1
2019	1,702	4,814,201	.	.	1,108.8
2020	1,581	5,288,529	.	.	1,004.4

County: county value. Kansas: state value. County Rank: highest county value ranked #1. (\$000): thousands of dollars. Nonmetro Kansas: Kansas total less Metropolitan Areas as defined by the Office of Management and Budget (OMB; released 3/6/2020). Per 1000: For nonmoney amounts, Per 1000=(county value / county population for the same year as the data) x 1000. \$ Per capita=(county value / county population for the same year as the data). Value= . indicates missing or suppressed data or value not calculated.

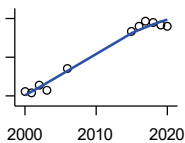
**Business**



**TOTAL ANNUAL PAYROLL(\$000):  
REAL ESTATE, RENTAL, AND  
LEASING**

U.S. Census Bureau, County Business Patterns. Beginning with the 2017 data, any tabulation with fewer than 3 establishments were omitted from the release. Data for these establishments are included in the broader total.

Year	County	State of Kansas	Non Metro Kansas	County Rank	Per 1000 or \$ Per Capita
2000	0	360,637	.	.	0.0
2001	0	397,371	.	.	0.0
2002	0	403,695	.	.	0.0
2003	0	437,786	.	.	0.0
2004	0	430,719	.	.	0.0
2005	0	465,149	.	.	0.0
2006	0	478,811	.	.	0.0
2007	0	452,969	.	.	0.0
2008	0	484,149	.	.	0.0
2009	0	450,884	.	.	0.0
2010	0	487,255	.	.	0.0
2011	0	535,120	.	.	0.0
2012	0	531,039	.	.	0.0
2013	.	538,796	.	.	.
2014	.	542,307	.	.	.
2015	0	595,030	.	.	0.0
2016	0	607,668	.	.	0.0



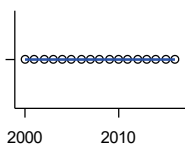
**TOTAL ANNUAL PAYROLL(\$000):  
PROFESSIONAL, SCIENTIFIC, AND  
TECHNICAL SERVICES**

U.S. Census Bureau, County Business Patterns. Beginning with the 2017 data, any tabulation with fewer than 3 establishments were omitted from the release. Data for these establishments are included in the broader total.

Year	County	State of Kansas	Non Metro Kansas	County Rank	Per 1000 or \$ Per Capita
2000	224	2,057,313	.	.	103.9
2001	217	2,152,937	.	.	103.1
2002	255	2,150,085	.	.	128.7
2003	227	2,052,712	.	.	116.1
2004	.	2,531,457	.	.	.
2005	.	2,418,500	.	.	.
2006	339	2,655,690	.	.	190.4
2007	.	2,901,544	.	.	.
2008	.	2,903,802	.	.	.
2009	.	3,071,611	.	.	.
2010	.	3,037,182	.	.	.
2011	.	3,132,082	.	.	.
2012	.	3,455,548	.	.	.
2013	.	3,777,729	.	.	.
2014	.	3,981,580	.	.	.
2015	531	4,039,074	.	.	325.8
2016	561	4,125,507	.	.	352.2
2017	588	4,158,858	.	.	379.8
2018	578	4,314,317	.	.	373.9
2019	569	4,646,644	.	.	370.7
2020	562	4,927,611	.	.	357.1

County: county value. Kansas: state value. County Rank: highest county value ranked #1. (\$000): thousands of dollars. Nonmetro Kansas: Kansas total less Metropolitan Areas as defined by the Office of Management and Budget (OMB; released 3/6/2020). Per 1000: For nonmoney amounts, Per 1000=(county value / county population for the same year as the data) x 1000. \$ Per capita=(county value / county population for the same year as the data). Value= . indicates missing or suppressed data or value not calculated.

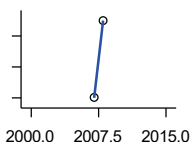
**Business**



**TOTAL ANNUAL PAYROLL(\$000):  
MANAGEMENT OF COMPANIES AND  
ENTERPRISES**

U.S. Census Bureau, County Business Patterns. Beginning with the 2017 data, any tabulation with fewer than 3 establishments were omitted from the release. Data for these establishments are included in the broader total.

Year	County	State of Kansas	Non Metro Kansas	County Rank	Per 1000 or \$ Per Capita
2000	0	1,362,735	.	.	0.0
2001	0	1,279,253	.	.	0.0
2002	0	1,311,368	.	.	0.0
2003	0	1,352,119	.	.	0.0
2004	0	1,378,891	.	.	0.0
2005	0	1,510,876	.	.	0.0
2006	0	1,626,320	.	.	0.0
2007	0	2,233,654	.	.	0.0
2008	0	1,848,656	.	.	0.0
2009	0	1,601,158	.	.	0.0
2010	0	2,003,048	.	.	0.0
2011	0	1,677,619	.	.	0.0
2012	0	1,834,430	.	.	0.0
2013	0	1,938,100	.	.	0.0
2014	0	2,117,232	.	.	0.0
2015	0	2,451,126	.	.	0.0
2016	0	2,167,620	.	.	0.0



**TOTAL ANNUAL PAYROLL(\$000):  
ADMIN, SUPPORT, WASTE MGMT.,  
AND REMEDIATION**

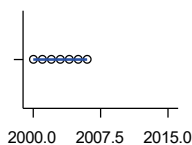
U.S. Census Bureau, County Business Patterns. Beginning with the 2017 data, any tabulation with fewer than 3 establishments were omitted from the release. Data for these establishments are included in the broader total.

Year	County	State of Kansas	Non Metro Kansas	County Rank	Per 1000 or \$ Per Capita
2000	.	1,388,712	.	.	.
2001	.	1,416,480	.	.	.
2002	.	1,378,905	.	.	.
2003	.	1,387,061	.	.	.
2004	.	1,544,442	.	.	.
2005	.	1,694,687	.	.	.
2006	.	1,800,846	.	.	.
2007	144	1,978,025	.	.	81.7
2008	145	2,096,864	.	.	82.6
2009	.	1,832,540	.	.	.
2010	.	2,117,325	.	.	.
2011	.	2,114,970	.	.	.
2012	.	2,230,250	.	.	.
2013	.	2,214,320	.	.	.
2014	.	2,444,170	.	.	.
2015	.	2,577,592	.	.	.

County: county value. Kansas: state value. County Rank: highest county value ranked #1. (\$000): thousands of dollars. Nonmetro Kansas: Kansas total less Metropolitan Areas as defined by the Office of Management and Budget (OMB; released 3/6/2020). Per 1000: For nonmoney amounts, Per 1000=(county value / county population for the same year as the data) x 1000. \$ Per capita=(county value / county population for the same year as the data). Value= . indicates missing or suppressed data or value not calculated.

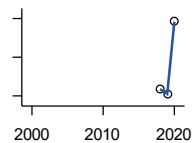
**Business**

**TOTAL ANNUAL PAYROLL(\$000):  
EDUCATIONAL SERVICES**



U.S. Census Bureau, County Business Patterns. Beginning with the 2017 data, any tabulation with fewer than 3 establishments were omitted from the release. Data for these establishments are included in the broader total.

Year	County	State of Kansas	Non Metro Kansas	County Rank	Per 1000 or \$ Per Capita
2000	0	299,843	.	.	0.0
2001	0	320,606	.	.	0.0
2002	0	353,531	.	.	0.0
2003	0	350,814	.	.	0.0
2004	0	361,644	.	.	0.0
2005	0	375,781	.	.	0.0
2006	0	400,565	.	.	0.0
2007	.	414,233	.	.	.
2008	.	463,210	.	.	.
2009	.	468,856	.	.	.
2010	.	487,670	.	.	.
2011	.	504,964	.	.	.
2012	.	508,448	.	.	.
2013	.	553,995	.	.	.
2014	.	612,073	.	.	.
2015	.	579,794	.	.	.



**TOTAL ANNUAL PAYROLL(\$000):  
HEALTH CARE AND SOCIAL ASSISTANCE**

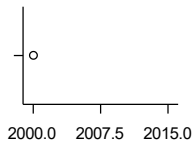
U.S. Census Bureau, County Business Patterns. Beginning with the 2017 data, any tabulation with fewer than 3 establishments were omitted from the release. Data for these establishments are included in the broader total.

Year	County	State of Kansas	Non Metro Kansas	County Rank	Per 1000 or \$ Per Capita
2000	.	4,120,595	.	.	.
2001	.	4,445,027	.	.	.
2002	.	4,705,220	.	.	.
2003	.	4,939,323	.	.	.
2004	.	5,232,394	.	.	.
2005	.	5,487,089	.	.	.
2006	.	5,814,218	.	.	.
2007	.	6,186,471	.	.	.
2008	.	6,490,627	.	.	.
2009	.	6,749,962	.	.	.
2010	.	6,871,727	.	.	.
2011	.	7,129,655	.	.	.
2012	.	7,614,853	.	.	.
2013	.	7,541,515	.	.	.
2014	.	7,733,621	.	.	.
2015	.	7,969,650	.	.	.
2018	2,334	8,637,619	.	.	1,509.7
2019	2,311	8,854,414	.	.	1,505.5
2020	2,683	9,309,269	.	.	1,704.6

County: county value. Kansas: state value. County Rank: highest county value ranked #1. (\$000): thousands of dollars. Nonmetro Kansas: Kansas total less Metropolitan Areas as defined by the Office of Management and Budget (OMB; released 3/6/2020). Per 1000: For nonmoney amounts, Per 1000=(county value / county population for the same year as the data) x 1000. \$ Per capita=(county value / county population for the same year as the data). Value= . indicates missing or suppressed data or value not calculated.



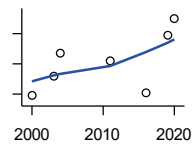
**Business**



**TOTAL ANNUAL PAYROLL(\$000):  
ARTS, ENTERTAINMENT, AND  
RECREATION**

U.S. Census Bureau, County Business Patterns. Beginning with the 2017 data, any tabulation with fewer than 3 establishments were omitted from the release. Data for these establishments are included in the broader total.

Year	County	State of Kansas	Non Metro Kansas	County Rank	Per 1000 or \$ Per Capita
2000	32	195,784	.	.	14.8
2001	.	203,511	.	.	.
2002	.	206,204	.	.	.
2003	.	185,049	.	.	.
2004	.	190,742	.	.	.
2005	.	196,594	.	.	.
2006	.	201,049	.	.	.
2007	.	220,435	.	.	.
2008	.	236,986	.	.	.
2009	.	237,116	.	.	.
2010	.	233,285	.	.	.
2011	.	234,351	.	.	.
2012	.	254,169	.	.	.
2013	.	278,474	.	.	.
2014	.	289,103	.	.	.
2015	.	300,253	.	.	.



**TOTAL ANNUAL PAYROLL(\$000):  
ACCOMMODATION AND FOOD  
SERVICES**

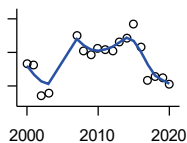
U.S. Census Bureau, County Business Patterns. Beginning with the 2017 data, any tabulation with fewer than 3 establishments were omitted from the release. Data for these establishments are included in the broader total.

Year	County	State of Kansas	Non Metro Kansas	County Rank	Per 1000 or \$ Per Capita
2000	47	926,831	.	.	21.8
2001	.	960,196	.	.	.
2002	.	930,510	.	.	.
2003	80	992,313	.	.	40.9
2004	117	1,046,901	.	.	61.1
2005	.	1,101,854	.	.	.
2006	.	1,185,280	.	.	.
2007	.	1,431,100	.	.	.
2008	.	1,271,594	.	.	.
2009	.	1,283,065	.	.	.
2010	.	1,296,556	.	.	.
2011	106	1,364,281	.	.	60.8
2012	.	1,388,337	.	.	.
2013	.	1,476,335	.	.	.
2014	.	1,572,021	.	.	.
2015	.	1,640,144	.	.	.
2016	51	1,709,193	.	.	32.0
2019	147	1,958,603	.	.	95.8
2020	174	1,745,238	.	.	110.5

County: county value. Kansas: state value. County Rank: highest county value ranked #1. (\$000): thousands of dollars. Nonmetro Kansas: Kansas total less Metropolitan Areas as defined by the Office of Management and Budget (OMB; released 3/6/2020). Per 1000: For nonmoney amounts, Per 1000=(county value / county population for the same year as the data) x 1000. \$ Per capita=(county value / county population for the same year as the data). Value= . indicates missing or suppressed data or value not calculated.

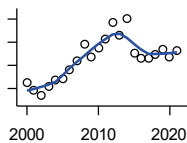
**Business**

**TOTAL ANNUAL PAYROLL(\$000):  
OTHER SERVICES**



U.S. Census Bureau, County Business Patterns. Beginning with the 2017 data, any tabulation with fewer than 3 establishments were omitted from the release. Data for these establishments are included in the broader total.

Year	County	State of Kansas	Non Metro Kansas	County Rank	Per 1000 or \$ Per Capita
2000	336	965,540	.	.	155.9
2001	323	996,716	.	.	153.5
2002	139	1,007,464	.	.	70.2
2003	154	979,466	.	.	78.7
2004	.	970,383	.	.	.
2005	.	1,005,537	.	.	.
2006	.	1,055,932	.	.	.
2007	499	1,141,551	.	.	283.0
2008	412	1,184,016	.	.	234.6
2009	384	1,167,154	.	.	215.9
2010	426	1,170,201	.	.	243.4
2011	417	1,173,775	.	.	239.2
2012	409	1,217,210	.	.	242.9
2013	459	1,254,933	.	.	270.3
2014	486	1,305,563	.	.	291.7
2015	571	1,341,075	.	.	350.3
2016	429	1,351,375	.	.	269.3
2017	234	1,344,179	.	.	151.2
2018	260	1,382,801	.	.	168.2
2019	246	1,427,711	.	.	160.3
2020	212	1,420,859	.	.	134.7



**NOMINAL TAXABLE RETAIL SALES  
(million\$)**

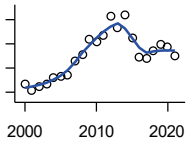
Kansas Department of Revenue

Year	County	State of Kansas	Non Metro Kansas	County Rank	Per 1000 or \$ Per Capita
2000	11.2	30,119.0	8,831.7	102	5.2
2001	9.5	30,202.2	8,700.3	101	4.5
2002	8.4	29,380.8	8,241.5	101	4.2
2003	10.5	30,694.0	8,710.6	101	5.4
2004	11.7	31,922.6	9,062.5	101	6.1
2005	12.0	32,924.2	9,386.6	102	6.5
2006	13.9	34,937.6	10,042.1	102	7.8
2007	16.0	36,180.1	10,553.2	101	9.1
2008	19.5	37,559.5	11,126.9	95	11.1
2009	16.7	35,211.8	10,351.5	98	9.4
2010	18.7	35,655.7	10,606.1	96	10.7
2011	20.8	37,257.0	11,153.5	93	11.9
2012	24.1	38,988.8	11,749.1	90	14.3
2013	21.5	40,009.0	11,993.8	98	12.7
2014	25.1	41,299.0	12,365.4	94	15.1
2015	17.7	41,635.8	11,747.6	99	10.9
2016	16.4	42,040.2	11,523.5	103	10.3
2017	16.4	41,940.1	11,449.9	101	10.6
2018	17.4	42,732.3	11,643.9	101	11.3
2019	18.6	43,732.5	12,062.7	100	12.1
2020	16.7	43,689.9	12,331.7	102	10.6
2021	18.2	48,532.8	13,413.0	102	11.6

County: county value. Kansas: state value. County Rank: highest county value ranked #1. (\$000): thousands of dollars. Nonmetro Kansas: Kansas total less Metropolitan Areas as defined by the Office of Management and Budget (OMB; released 3/6/2020). Per 1000: For nonmoney amounts, Per 1000=(county value / county population for the same year as the data) x 1000. \$ Per capita=(county value / county population for the same year as the data). Value= . indicates missing or suppressed data or value not calculated.

**Business**

RETAIL PULL FACTOR



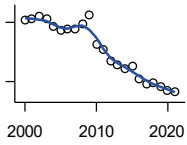
Kansas Direct Program, Kansas State University Cooperative Extension Service (1980-1999); Kansas Department of Revenue (2000- )

Year	County	State of Kansas	Non Metro Kansas	County Rank	Per 1000 or \$ Per Capita
2000	0.47	.	.	81	.
2001	0.41	.	.	86	.
2002	0.45	.	.	79	.
2003	0.47	.	.	77	.
2004	0.52	.	.	75	.
2005	0.53	.	.	75	.
2006	0.54	.	.	75	.
2007	0.66	.	.	59	.
2008	0.71	.	.	54	.
2009	0.84	.	.	40	.
2010	0.82	.	.	44	.
2011	0.87	.	.	36	.
2012	1.03	.	.	25	.
2013	0.93	.	.	33	.
2014	1.04	.	.	26	.
2015	0.85	.	.	39	.
2016	0.69	.	.	59	.
2017	0.68	.	.	61	.
2018	0.74	.	.	48	.
2019	0.80	.	.	39	.
2020	0.77	.	.	45	.
2021	0.70	.	.	69	.

County: county value. Kansas: state value. County Rank: highest county value ranked #1. (\$000): thousands of dollars. Nonmetro Kansas: Kansas total less Metropolitan Areas as defined by the Office of Management and Budget (OMB; released 3/6/2020). Per 1000: For nonmoney amounts, Per 1000=(county value / county population for the same year as the data) x 1000. \$ Per capita=(county value / county population for the same year as the data). Value= . indicates missing or suppressed data or value not calculated.

**Employment**

CIVILIAN LABOR FORCE (BLS-Place of Residence; 1990- )



U.S. Department of Labor, Bureau of Labor Statistics (BLS)

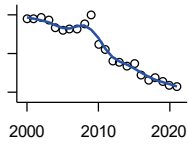
Year	County	State of Kansas	Non Metro Kansas	County Rank	Per 1000 or \$ Per Capita
2000	1,112	1,402,606	482,229	101	516.0
2001	1,117	1,398,521	475,280	101	530.9
2002	1,131	1,419,335	482,428	101	570.9
2003	1,121	1,441,065	490,161	101	573.1
2004	1,081	1,458,910	494,509	101	564.2
2005	1,059	1,458,767	490,047	102	573.1
2006	1,064	1,467,553	498,594	102	597.8
2007	1,067	1,485,414	497,048	102	605.2
2008	1,092	1,493,365	504,522	102	621.9
2009	1,138	1,512,572	516,311	101	639.7
2010	986	1,500,463	492,594	103	563.4
2011	964	1,498,000	492,563	103	553.1
2012	904	1,490,808	489,349	103	536.8
2013	885	1,489,395	485,484	104	521.2
2014	865	1,494,203	481,813	105	519.2
2015	880	1,493,782	477,546	104	539.9
2016	814	1,491,961	468,258	105	511.0
2017	789	1,488,346	461,063	105	509.7
2018	794	1,488,027	456,866	105	513.6
2019	776	1,497,517	455,858	105	505.5
2020	755	1,493,706	452,935	105	479.7
2021	747	1,495,665	453,398	105	477.3

County: county value. Kansas: state value. County Rank: highest county value ranked #1. (\$000): thousands of dollars. Nonmetro Kansas: Kansas total less Metropolitan Areas as defined by the Office of Management and Budget (OMB; released 3/6/2020). Per 1000: For nonmoney amounts, Per 1000=(county value / county population for the same year as the data) x 1000. \$ Per capita=(county value / county population for the same year as the data). Value= . indicates missing or suppressed data or value not calculated.

**Employment**

EMPLOYED (BLS-Place of Residence; 1990- )

U.S. Department of Labor, Bureau of Labor Statistics (BLS)



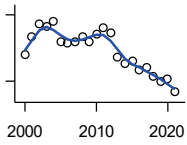
Year	County	State of Kansas	Non Metro Kansas	County Rank	Per 1000 or \$ Per Capita
2000	1,080	1,349,841	464,962	101	501.2
2001	1,077	1,338,775	455,154	101	511.9
2002	1,085	1,347,163	461,241	101	547.7
2003	1,076	1,361,115	467,622	101	550.1
2004	1,034	1,378,355	470,330	101	539.7
2005	1,021	1,384,654	467,722	102	552.5
2006	1,027	1,402,950	479,174	102	577.0
2007	1,029	1,422,109	477,983	102	583.7
2008	1,052	1,425,022	484,056	102	599.1
2009	1,100	1,408,142	485,797	101	618.3
2010	945	1,396,172	461,635	103	540.0
2011	920	1,402,198	463,723	103	527.8
2012	862	1,405,638	463,376	103	511.9
2013	854	1,410,470	461,405	104	502.9
2014	837	1,426,892	461,797	105	502.4
2015	851	1,431,533	457,899	105	522.1
2016	789	1,431,920	449,356	105	495.3
2017	763	1,434,516	445,003	105	492.9
2018	772	1,439,329	442,716	105	499.4
2019	756	1,450,705	442,108	105	492.5
2020	734	1,408,965	433,229	105	466.3
2021	732	1,447,323	441,159	105	467.7

County: county value. Kansas: state value. County Rank: highest county value ranked #1. (\$000): thousands of dollars. Nonmetro Kansas: Kansas total less Metropolitan Areas as defined by the Office of Management and Budget (OMB; released 3/6/2020). Per 1000: For nonmoney amounts, Per 1000=(county value / county population for the same year as the data) x 1000. \$ Per capita=(county value / county population for the same year as the data). Value= . indicates missing or suppressed data or value not calculated.

**Employment**

UNEMPLOYED (BLS-Place of Residence; 1990- )

U.S. Department of Labor, Bureau of Labor Statistics (BLS)

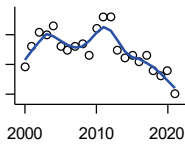


Year	County	State of Kansas	Non Metro Kansas	County Rank	Per 1000 or \$ Per Capita
2000	32	52,765	17,267	101	14.8
2001	40	59,746	20,126	96	19.0
2002	46	72,172	21,187	96	23.2
2003	45	79,950	22,539	97	23.0
2004	47	80,555	24,179	98	24.5
2005	38	74,113	22,325	101	20.6
2006	37	64,603	19,420	100	20.8
2007	38	63,305	19,065	98	21.6
2008	40	68,343	20,466	99	22.8
2009	38	104,430	30,514	104	21.4
2010	41	104,291	30,959	103	23.4
2011	44	95,802	28,840	101	25.2
2012	42	85,170	25,973	100	24.9
2013	31	78,925	24,079	103	18.3
2014	28	67,311	20,016	103	16.8
2015	29	62,249	19,647	102	17.8
2016	25	60,041	18,902	103	15.7
2017	26	53,830	16,060	102	16.8
2018	22	48,698	14,150	102	14.2
2019	20	46,812	13,750	104	13.0
2020	21	84,741	19,706	103	13.3
2021	15	48,342	12,239	104	9.6

County: county value. Kansas: state value. County Rank: highest county value ranked #1. (\$000): thousands of dollars. Nonmetro Kansas: Kansas total less Metropolitan Areas as defined by the Office of Management and Budget (OMB; released 3/6/2020). Per 1000: For nonmoney amounts, Per 1000=(county value / county population for the same year as the data) x 1000. \$ Per capita=(county value / county population for the same year as the data). Value= . indicates missing or suppressed data or value not calculated.

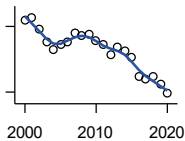
**Employment**

UNEMPLOYMENT RATE (BLS-Place of Residence; 1990- )



U.S. Department of Labor, Bureau of Labor Statistics (BLS)

Year	County	State of Kansas	Non Metro Kansas	County Rank	Per 1000 or \$ Per Capita
2000	2.9	3.8	3.6	79	.
2001	3.6	4.3	4.2	60	.
2002	4.1	5.1	4.4	45	.
2003	4.0	5.5	4.6	57	.
2004	4.3	5.5	4.9	61	.
2005	3.6	5.1	4.6	84	.
2006	3.5	4.4	3.9	61	.
2007	3.6	4.3	3.8	56	.
2008	3.7	4.6	4.1	55	.
2009	3.3	6.9	5.9	101	.
2010	4.2	7.0	6.3	86	.
2011	4.6	6.4	5.9	63	.
2012	4.6	5.7	5.3	53	.
2013	3.5	5.3	5.0	83	.
2014	3.2	4.5	4.2	78	.
2015	3.3	4.2	4.1	76	.
2016	3.1	4.0	4.0	82	.
2017	3.3	3.6	3.5	49	.
2018	2.8	3.3	3.1	58	.
2019	2.6	3.1	3.0	71	.
2020	2.8	5.7	4.4	80	.
2021	2.0	3.2	2.7	81	.



BEA EMPLOYMENT: TOTAL (Place of Work)

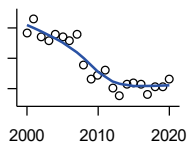
U.S. Bureau of Economic Analysis, Regional Economic Information System (REIS)

Year	County	State of Kansas	Non Metro Kansas	County Rank	Per 1000 or \$ Per Capita
2000	1,528	1,760,312	604,361	101	709.0
2001	1,538	1,767,601	592,672	99	731.0
2002	1,485	1,746,077	585,387	100	749.6
2003	1,428	1,733,694	577,860	101	730.1
2004	1,394	1,750,876	578,750	101	727.6
2005	1,418	1,765,650	577,562	100	767.3
2006	1,427	1,795,507	583,041	100	801.7
2007	1,471	1,844,355	591,924	100	834.4
2008	1,457	1,858,069	594,368	100	829.7
2009	1,464	1,813,184	580,972	100	822.9
2010	1,435	1,801,873	579,758	100	820.0
2011	1,415	1,819,044	583,725	101	811.8
2012	1,368	1,841,393	591,748	101	812.4
2013	1,406	1,869,054	597,236	101	828.0
2014	1,390	1,895,859	601,291	101	834.3
2015	1,357	1,910,954	598,589	101	832.5
2016	1,269	1,916,152	592,580	103	796.6
2017	1,258	1,914,179	584,337	102	812.7
2018	1,270	1,926,242	580,213	102	821.5
2019	1,238	1,925,204	574,496	102	806.5
2020	1,193	1,851,247	556,671	102	757.9

County: county value. Kansas: state value. County Rank: highest county value ranked #1. (\$000): thousands of dollars. Nonmetro Kansas: Kansas total less Metropolitan Areas as defined by the Office of Management and Budget (OMB; released 3/6/2020). Per 1000: For nonmoney amounts, Per 1000=(county value / county population for the same year as the data) x 1000. \$ Per capita=(county value / county population for the same year as the data). Value= . indicates missing or suppressed data or value not calculated.

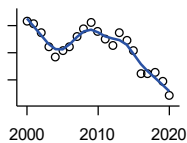
**Employment**

**BEA EMPLOYMENT: FARM**



U.S. Bureau of Economic Analysis,  
Regional Economic Information System  
(REIS)

Year	County	State of Kansas	Non Metro Kansas	County Rank	Per 1000 or \$ Per Capita
2000	413	77,477	59,088	96	191.6
2001	432	78,177	59,647	96	205.3
2002	409	70,532	53,893	94	206.5
2003	404	68,516	52,099	92	206.5
2004	412	67,586	51,246	89	215.0
2005	409	66,829	50,386	87	221.3
2006	403	64,910	48,728	84	226.4
2007	411	65,639	49,037	81	233.1
2008	371	63,820	47,682	86	211.3
2009	353	62,798	46,960	89	198.4
2010	357	63,882	47,984	88	204.0
2011	365	65,761	49,707	89	209.4
2012	340	63,753	48,167	89	201.9
2013	330	62,739	47,255	90	194.3
2014	345	64,308	48,722	89	207.1
2015	348	64,416	48,927	89	213.5
2016	346	63,840	48,539	90	217.2
2017	333	61,876	46,936	89	215.1
2018	342	63,233	48,069	90	221.2
2019	343	63,300	48,167	90	223.5
2020	352	64,281	49,038	90	223.6



**BEA EMPLOYMENT: NON-FARM**

U.S. Bureau of Economic Analysis,  
Regional Economic Information System  
(REIS)

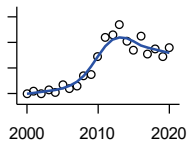
Year	County	State of Kansas	Non Metro Kansas	County Rank	Per 1000 or \$ Per Capita
2000	1,115	1,682,835	545,273	101	517.4
2001	1,106	1,689,424	533,025	101	525.7
2002	1,076	1,675,545	531,494	101	543.2
2003	1,024	1,665,178	525,761	101	523.5
2004	982	1,683,290	527,504	102	512.5
2005	1,009	1,698,821	527,176	102	546.0
2006	1,024	1,730,597	534,313	102	575.3
2007	1,060	1,778,716	542,887	100	601.2
2008	1,086	1,794,249	546,686	100	618.5
2009	1,111	1,750,386	534,012	100	624.5
2010	1,078	1,737,991	531,774	101	616.0
2011	1,050	1,753,283	534,018	101	602.4
2012	1,028	1,777,640	543,581	101	610.5
2013	1,076	1,806,315	549,981	101	633.7
2014	1,045	1,831,551	552,569	101	627.3
2015	1,009	1,846,538	549,662	102	619.0
2016	923	1,852,312	544,041	103	579.4
2017	925	1,852,303	537,401	103	597.5
2018	928	1,863,009	532,144	102	600.3
2019	895	1,861,904	526,329	102	583.1
2020	841	1,786,966	507,633	103	534.3

County: county value. Kansas: state value. County Rank: highest county value ranked #1. (\$000): thousands of dollars. Nonmetro Kansas: Kansas total less Metropolitan Areas as defined by the Office of Management and Budget (OMB; released 3/6/2020). Per 1000: For nonmoney amounts, Per 1000=(county value / county population for the same year as the data) x 1000. \$ Per capita=(county value / county population for the same year as the data). Value= . indicates missing or suppressed data or value not calculated.



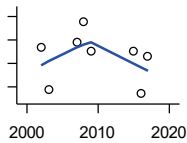
**Employment**

**AVERAGE WAGE PER JOB (\$)**



U.S. Bureau of Economic Analysis,  
Regional Economic Information System  
(REIS)

Year	County	State of Kansas	Non Metro Kansas	County Rank	Per 1000 or \$ Per Capita
2000	19,973	31,854	24,396	70	.
2001	21,644	32,859	26,379	80	.
2002	19,449	33,707	26,331	87	.
2003	22,652	35,078	28,911	91	.
2004	20,595	35,932	29,747	98	.
2005	26,434	37,467	31,646	81	.
2006	23,781	40,038	31,993	87	.
2007	25,714	41,500	33,484	93	.
2008	33,419	44,197	36,256	64	.
2009	35,233	43,860	35,739	40	.
2010	48,460	45,370	38,631	21	.
2011	63,652	48,280	42,324	9	.
2012	65,929	50,549	42,015	6	.
2013	74,056	52,629	46,073	11	.
2014	61,078	51,959	43,562	12	.
2015	54,027	52,250	42,320	16	.
2016	64,956	51,664	41,964	7	.
2017	51,315	53,007	42,137	17	.
2018	54,657	54,790	44,514	16	.
2019	49,245	56,956	45,336	27	.
2020	55,556	60,597	49,183	24	.



**BEA EMPLOYMENT: FORESTRY, FISHING, HUNTING, AND AG SUPPORT**

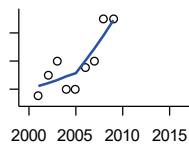
U.S. Bureau of Economic Analysis,  
Regional Economic Information System  
(REIS)

Year	County	State of Kansas	Non Metro Kansas	County Rank	Per 1000 or \$ Per Capita
2001	.	7,059	.	.	.
2002	77	8,045	.	15	.
2003	59	7,313	.	18	.
2004	.	7,623	.	.	.
2005	.	7,962	.	.	.
2006	.	7,748	.	.	.
2007	79	8,228	.	19	.
2008	88	8,646	.	15	.
2009	75	8,982	.	17	.
2010	.	9,251	.	.	.
2011	.	9,410	.	.	.
2012	.	9,691	.	.	.
2013	.	10,014	.	.	.
2014	.	10,708	.	.	.
2015	75	10,020	.	24	.
2016	57	10,383	.	24	.
2017	73	10,693	.	20	.

County: county value. Kansas: state value. County Rank: highest county value ranked #1. (\$000): thousands of dollars. Nonmetro Kansas: Kansas total less Metropolitan Areas as defined by the Office of Management and Budget (OMB; released 3/6/2020). Per 1000: For nonmoney amounts, Per 1000=(county value / county population for the same year as the data) x 1000. \$ Per capita=(county value / county population for the same year as the data). Value= . indicates missing or suppressed data or value not calculated.

**Employment**

**BEA EMPLOYMENT: MINING**



U.S. Bureau of Economic Analysis,  
Regional Economic Information System  
(REIS)

Year	County	State of Kansas	Non Metro Kansas	County Rank	Per 1000 or \$ Per Capita
2001	9	19,592	.	60	.
2002	12	17,635	.	52	.
2003	14	19,869	.	51	.
2004	10	18,466	.	57	.
2005	10	19,489	.	58	.
2006	13	22,403	.	56	.
2007	14	24,043	.	55	.
2008	20	31,467	.	55	.
2009	20	29,941	.	52	.
2010	.	36,124	.	.	.
2011	.	31,658	.	.	.
2012	.	42,405	.	.	.
2013	.	46,585	.	.	.
2014	.	45,526	.	.	.
2015	.	46,460	.	.	.
2016	.	48,555	.	.	.

**BEA EMPLOYMENT: UTILITIES**

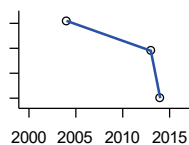
U.S. Bureau of Economic Analysis,  
Regional Economic Information System  
(REIS)

Year	County	State of Kansas	Non Metro Kansas	County Rank	Per 1000 or \$ Per Capita
2001	.	7,608	.	.	.
2002	.	7,087	.	.	.
2003	.	7,253	.	.	.
2004	.	7,356	.	.	.
2005	.	7,447	.	.	.
2006	.	7,478	.	.	.
2007	.	7,584	.	.	.
2008	.	7,855	.	.	.
2009	.	7,941	.	.	.
2010	.	8,028	.	.	.
2011	.	8,213	.	.	.
2012	.	8,155	.	.	.
2013	.	7,949	.	.	.
2014	.	7,985	.	.	.
2015	.	7,040	.	.	.
2016	.	7,133	.	.	.

County: county value. Kansas: state value. County Rank: highest county value ranked #1. (\$000): thousands of dollars. Nonmetro Kansas: Kansas total less Metropolitan Areas as defined by the Office of Management and Budget (OMB; released 3/6/2020). Per 1000: For nonmoney amounts, Per 1000=(county value / county population for the same year as the data) x 1000. \$ Per capita=(county value / county population for the same year as the data). Value= . indicates missing or suppressed data or value not calculated.

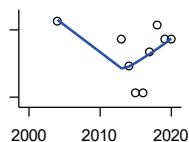
**Employment**

**BEA EMPLOYMENT:  
CONSTRUCTION**



U.S. Bureau of Economic Analysis,  
Regional Economic Information System  
(REIS)

Year	County	State of Kansas	Non Metro Kansas	County Rank	Per 1000 or \$ Per Capita
2001	.	92,647	27,972	.	.
2002	.	90,370	.	.	.
2003	.	91,725	26,681	.	.
2004	51	93,271	.	80	.
2005	.	94,836	.	.	.
2006	.	97,449	.	.	.
2007	.	99,119	29,179	.	.
2008	.	97,741	.	.	.
2009	.	90,165	28,077	.	.
2010	.	84,708	26,402	.	.
2011	.	83,332	25,999	.	.
2012	.	85,966	.	.	.
2013	39	88,094	.	85	.
2014	20	91,143	.	87	.
2015	.	91,458	27,583	.	.
2016	.	93,539	27,151	.	.



**BEA EMPLOYMENT:  
MANUFACTURING**

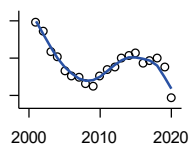
U.S. Bureau of Economic Analysis,  
Regional Economic Information System  
(REIS)

Year	County	State of Kansas	Non Metro Kansas	County Rank	Per 1000 or \$ Per Capita
2001	.	199,980	73,170	.	.
2002	.	188,905	70,691	.	.
2003	.	179,013	68,418	.	.
2004	17	181,738	69,669	85	.
2005	.	185,459	71,072	.	.
2006	.	188,047	71,704	.	.
2007	.	192,930	73,488	.	.
2008	.	193,116	72,235	.	.
2009	.	173,854	64,961	.	.
2010	.	166,000	62,884	.	.
2011	.	167,302	64,361	.	.
2012	.	169,308	65,944	.	.
2013	13	170,113	67,251	87	.
2014	7	169,307	68,299	87	.
2015	1	168,324	66,978	86	.
2016	1	167,723	65,796	89	.
2017	10	168,438	66,795	88	.
2018	16	171,778	68,181	88	.
2019	13	173,605	67,879	86	.
2020	13	165,228	65,658	85	.

County: county value. Kansas: state value. County Rank: highest county value ranked #1. (\$000): thousands of dollars. Nonmetro Kansas: Kansas total less Metropolitan Areas as defined by the Office of Management and Budget (OMB; released 3/6/2020). Per 1000: For nonmoney amounts, Per 1000=(county value / county population for the same year as the data) x 1000. \$ Per capita=(county value / county population for the same year as the data). Value= . indicates missing or suppressed data or value not calculated.

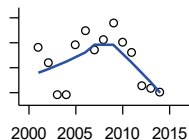
**Employment**

**BEA EMPLOYMENT: WHOLESALE TRADE**



U.S. Bureau of Economic Analysis,  
Regional Economic Information System  
(REIS)

Year	County	State of Kansas	Non Metro Kansas	County Rank	Per 1000 or \$ Per Capita
2001	159	65,698	.	46	.
2002	149	65,408	.	42	.
2003	127	63,504	.	50	.
2004	122	64,434	.	52	.
2005	107	64,587	.	56	.
2006	101	64,743	.	56	.
2007	100	65,993	.	55	.
2008	93	67,693	.	62	.
2009	90	65,954	.	65	.
2010	101	64,376	.	63	.
2011	108	64,712	.	59	.
2012	110	63,973	.	58	.
2013	120	64,999	.	54	.
2014	123	69,295	.	55	.
2015	126	68,444	.	56	.
2016	114	64,843	.	57	.
2017	117	65,014	.	53	.
2018	120	64,745	.	53	.
2019	111	63,324	.	54	.
2020	77	60,844	.	73	.



**BEA EMPLOYMENT: RETAIL TRADE**

U.S. Bureau of Economic Analysis,  
Regional Economic Information System  
(REIS)

Year	County	State of Kansas	Non Metro Kansas	County Rank	Per 1000 or \$ Per Capita
2001	108	198,069	.	100	.
2002	102	196,112	.	102	.
2003	89	194,545	64,173	105	.
2004	89	192,957	63,265	103	.
2005	109	191,656	62,506	99	.
2006	115	190,391	62,082	93	.
2007	107	190,643	61,716	95	.
2008	111	185,907	59,783	94	.
2009	118	181,262	58,714	94	.
2010	110	177,858	57,470	96	.
2011	106	180,548	57,734	96	.
2012	93	180,596	57,349	99	.
2013	92	183,245	57,556	100	.
2014	90	185,899	57,855	100	.
2015	.	188,421	58,516	.	.
2016	.	188,505	57,864	.	.

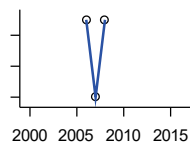
County: county value. Kansas: state value. County Rank: highest county value ranked #1. (\$000): thousands of dollars. Nonmetro Kansas: Kansas total less Metropolitan Areas as defined by the Office of Management and Budget (OMB; released 3/6/2020). Per 1000: For nonmoney amounts, Per 1000=(county value / county population for the same year as the data) x 1000. \$ Per capita=(county value / county population for the same year as the data). Value= . indicates missing or suppressed data or value not calculated.

**Employment**

**BEA EMPLOYMENT:  
TRANSPORTATION AND  
WAREHOUSING**

U.S. Bureau of Economic Analysis,  
Regional Economic Information System  
(REIS)

Year	County	State of Kansas	Non Metro Kansas	County Rank	Per 1000 or \$ Per Capita
2001	.	56,302	.	.	.
2002	.	55,319	.	.	.
2003	.	55,509	.	.	.
2004	.	55,479	.	.	.
2005	.	56,287	.	.	.
2006	.	57,506	.	.	.
2007	.	59,277	.	.	.
2008	.	58,725	.	.	.
2009	.	56,238	.	.	.
2010	.	55,179	.	.	.
2011	.	57,449	.	.	.
2012	.	59,756	.	.	.
2013	.	59,780	.	.	.
2014	.	60,565	.	.	.
2015	.	63,256	.	.	.
2016	.	65,705	.	.	.



**BEA EMPLOYMENT: INFORMATION**

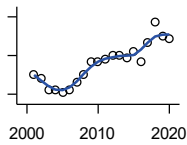
U.S. Bureau of Economic Analysis,  
Regional Economic Information System  
(REIS)

Year	County	State of Kansas	Non Metro Kansas	County Rank	Per 1000 or \$ Per Capita
2001	.	54,895	.	.	.
2002	.	50,728	.	.	.
2003	.	48,328	6,860	.	.
2004	.	45,617	.	.	.
2005	.	43,840	.	.	.
2006	6	43,925	.	68	.
2007	5	45,115	.	66	.
2008	6	42,958	.	61	.
2009	.	38,677	.	.	.
2010	.	33,432	.	.	.
2011	.	32,160	.	.	.
2012	.	31,829	.	.	.
2013	.	31,737	.	.	.
2014	.	32,316	.	.	.
2015	.	25,282	.	.	.
2016	.	24,998	.	.	.

County: county value. Kansas: state value. County Rank: highest county value ranked #1. (\$000): thousands of dollars. Nonmetro Kansas: Kansas total less Metropolitan Areas as defined by the Office of Management and Budget (OMB; released 3/6/2020). Per 1000: For nonmoney amounts, Per 1000=(county value / county population for the same year as the data) x 1000. \$ Per capita=(county value / county population for the same year as the data). Value= . indicates missing or suppressed data or value not calculated.

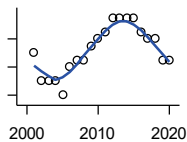
**Employment**

**BEA EMPLOYMENT: FINANCE AND INSURANCE**



U.S. Bureau of Economic Analysis,  
Regional Economic Information System  
(REIS)

Year	County	State of Kansas	Non Metro Kansas	County Rank	Per 1000 or \$ Per Capita
2001	60	76,118	.	72	.
2002	58	78,206	.	70	.
2003	52	78,441	.	71	.
2004	52	78,350	.	70	.
2005	51	78,952	.	67	.
2006	52	80,900	.	67	.
2007	56	86,094	.	69	.
2008	60	89,590	.	65	.
2009	67	93,573	.	66	.
2010	67	92,428	.	65	.
2011	68	99,495	.	63	.
2012	70	98,640	.	64	.
2013	70	99,998	.	67	.
2014	69	98,209	.	70	.
2015	72	100,534	.	66	.
2016	67	102,699	.	68	.
2017	77	101,563	.	67	.
2018	87	102,816	.	65	.
2019	80	100,276	.	67	.
2020	79	101,626	.	65	.



**BEA EMPLOYMENT: REAL ESTATE, RENTAL, AND LEASING**

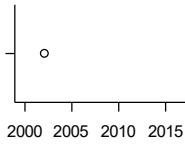
U.S. Bureau of Economic Analysis,  
Regional Economic Information System  
(REIS)

Year	County	State of Kansas	Non Metro Kansas	County Rank	Per 1000 or \$ Per Capita
2001	18	45,237	.	74	.
2002	14	44,970	.	74	.
2003	14	47,095	.	76	.
2004	14	50,181	.	76	.
2005	12	53,335	.	72	.
2006	16	55,342	.	69	.
2007	17	57,694	.	70	.
2008	17	57,933	.	66	.
2009	19	57,132	.	68	.
2010	20	59,578	.	68	.
2011	21	61,821	.	68	.
2012	23	60,432	.	63	.
2013	23	62,134	.	67	.
2014	23	64,705	.	69	.
2015	23	66,604	.	66	.
2016	21	68,395	.	70	.
2017	20	70,304	.	74	.
2018	20	72,631	.	75	.
2019	17	69,119	.	76	.
2020	17	68,452	.	76	.

County: county value. Kansas: state value. County Rank: highest county value ranked #1. (\$000): thousands of dollars. Nonmetro Kansas: Kansas total less Metropolitan Areas as defined by the Office of Management and Budget (OMB; released 3/6/2020). Per 1000: For nonmoney amounts, Per 1000=(county value / county population for the same year as the data) x 1000. \$ Per capita=(county value / county population for the same year as the data). Value= . indicates missing or suppressed data or value not calculated.

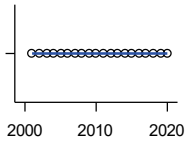
**Employment**

**BEA EMPLOYMENT: PROFESSIONAL AND TECHNICAL SERVICES**



U.S. Bureau of Economic Analysis,  
Regional Economic Information System  
(REIS)

Year	County	State of Kansas	Non Metro Kansas	County Rank	Per 1000 or \$ Per Capita
2001	.	81,396	.	.	.
2002	33	80,684	.	67	.
2003	.	80,311	.	.	.
2004	.	85,550	.	.	.
2005	.	85,003	.	.	.
2006	.	87,381	.	.	.
2007	.	92,717	.	.	.
2008	.	95,362	.	.	.
2009	.	93,232	.	.	.
2010	.	93,037	.	.	.
2011	.	93,237	.	.	.
2012	.	95,360	.	.	.
2013	.	100,795	.	.	.
2014	.	102,210	.	.	.
2015	.	105,625	.	.	.
2016	.	108,059	.	.	.



**BEA EMPLOYMENT: MANAGEMENT OF COMPANIES AND ENTERPRISES**

U.S. Bureau of Economic Analysis,  
Regional Economic Information System  
(REIS)

Year	County	State of Kansas	Non Metro Kansas	County Rank	Per 1000 or \$ Per Capita
2001	0	13,832	.	70	.
2002	0	12,576	.	69	.
2003	0	11,135	.	67	.
2004	0	10,614	.	67	.
2005	0	11,811	.	66	.
2006	0	13,061	.	66	.
2007	0	13,398	.	69	.
2008	0	15,234	.	72	.
2009	0	14,849	.	75	.
2010	0	16,579	.	75	.
2011	0	15,343	.	75	.
2012	0	15,075	.	82	.
2013	0	16,667	.	81	.
2014	0	20,441	.	79	.
2015	0	29,604	.	78	.
2016	0	27,824	.	77	.
2017	0	27,767	.	77	.
2018	0	28,862	.	75	.
2019	0	30,512	.	74	.
2020	0	25,648	.	74	.

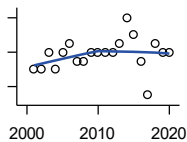
County: county value. Kansas: state value. County Rank: highest county value ranked #1. (\$000): thousands of dollars. Nonmetro Kansas: Kansas total less Metropolitan Areas as defined by the Office of Management and Budget (OMB; released 3/6/2020). Per 1000: For nonmoney amounts, Per 1000=(county value / county population for the same year as the data) x 1000. \$ Per capita=(county value / county population for the same year as the data). Value= . indicates missing or suppressed data or value not calculated.

**Employment**

**BEA EMPLOYMENT:  
ADMINISTRATIVE AND WASTE  
SERVICES**

U.S. Bureau of Economic Analysis,  
Regional Economic Information System  
(REIS)

Year	County	State of Kansas	Non Metro Kansas	County Rank	Per 1000 or \$ Per Capita
2001	.	81,573	.	.	.
2002	.	82,992	.	.	.
2003	.	81,298	.	.	.
2004	.	85,721	.	.	.
2005	.	89,933	.	.	.
2006	.	93,688	.	.	.
2007	.	98,865	.	.	.
2008	.	97,440	.	.	.
2009	.	92,455	.	.	.
2010	.	93,675	.	.	.
2011	.	97,969	.	.	.
2012	.	100,490	.	.	.
2013	.	104,680	.	.	.
2014	.	107,218	18,836	.	.
2015	.	103,436	18,767	.	.
2016	.	103,233	18,428	.	.



**BEA EMPLOYMENT: EDUCATIONAL  
SERVICES**

U.S. Bureau of Economic Analysis,  
Regional Economic Information System  
(REIS)

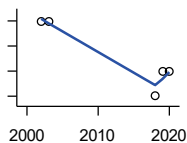
Year	County	State of Kansas	Non Metro Kansas	County Rank	Per 1000 or \$ Per Capita
2001	4	21,169	.	74	.
2002	4	22,173	.	75	.
2003	6	22,651	.	75	.
2004	4	21,601	.	80	.
2005	6	22,177	.	76	.
2006	7	22,438	.	60	.
2007	5	23,647	.	70	.
2008	5	24,653	.	70	.
2009	6	25,120	.	61	.
2010	6	26,071	.	61	.
2011	6	26,080	.	60	.
2012	6	26,625	.	56	.
2013	7	27,508	.	66	.
2014	10	28,708	.	53	.
2015	8	28,794	.	65	.
2016	5	27,996	.	65	.
2017	1	28,459	.	60	.
2018	7	28,560	.	64	.
2019	6	29,586	.	65	.
2020	6	27,508	.	65	.

County: county value. Kansas: state value. County Rank: highest county value ranked #1. (\$000): thousands of dollars. Nonmetro Kansas: Kansas total less Metropolitan Areas as defined by the Office of Management and Budget (OMB; released 3/6/2020). Per 1000: For nonmoney amounts, Per 1000=(county value / county population for the same year as the data) x 1000. \$ Per capita=(county value / county population for the same year as the data). Value= . indicates missing or suppressed data or value not calculated.



**Employment**

**BEA EMPLOYMENT: HEALTH CARE AND SOCIAL ASSISTANCE**



U.S. Bureau of Economic Analysis, Regional Economic Information System (REIS)

Year	County	State of Kansas	Non Metro Kansas	County Rank	Per 1000 or \$ Per Capita
2001	.	165,415	.	.	.
2002	11	168,198	.	65	.
2003	11	169,654	.	65	.
2004	.	172,796	.	.	.
2005	.	173,949	.	.	.
2006	.	176,919	.	.	.
2007	.	182,160	.	.	.
2008	.	186,051	.	.	.
2009	.	188,499	.	.	.
2010	.	188,383	.	.	.
2011	.	190,736	.	.	.
2012	.	192,991	.	.	.
2013	.	193,687	.	.	.
2014	.	194,632	.	.	.
2015	.	199,724	.	.	.
2016	.	201,830	.	.	.
2018	8	204,011	.	57	.
2019	9	206,646	.	60	.
2020	9	204,942	.	59	.

**BEA EMPLOYMENT: ARTS, ENTERTAINMENT, AND RECREATION**

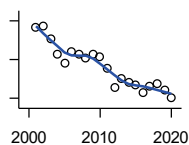
U.S. Bureau of Economic Analysis, Regional Economic Information System (REIS)

Year	County	State of Kansas	Non Metro Kansas	County Rank	Per 1000 or \$ Per Capita
2001	.	25,012	.	.	.
2002	.	25,668	.	.	.
2003	.	24,116	.	.	.
2004	.	25,355	.	.	.
2005	.	26,067	.	.	.
2006	.	26,505	.	.	.
2007	.	27,489	.	.	.
2008	.	27,501	.	.	.
2009	.	27,203	.	.	.
2010	.	27,479	.	.	.
2011	.	28,487	.	.	.
2012	.	30,729	.	.	.
2013	.	31,068	.	.	.
2014	.	32,154	.	.	.
2015	.	31,169	.	.	.
2016	.	32,373	.	.	.

County: county value. Kansas: state value. County Rank: highest county value ranked #1. (\$000): thousands of dollars. Nonmetro Kansas: Kansas total less Metropolitan Areas as defined by the Office of Management and Budget (OMB; released 3/6/2020). Per 1000: For nonmoney amounts, Per 1000=(county value / county population for the same year as the data) x 1000. \$ Per capita=(county value / county population for the same year as the data). Value= . indicates missing or suppressed data or value not calculated.

**Employment**

**BEA EMPLOYMENT: GOVERNMENT AND GOVERNMENT ENTERPRISES**



U.S. Bureau of Economic Analysis, Regional Economic Information System (REIS)

Year	County	State of Kansas	Non Metro Kansas	County Rank	Per 1000 or \$ Per Capita
2001	333	282,293	102,993	95	.
2002	335	281,427	103,581	95	.
2003	321	282,459	103,389	98	.
2004	305	283,877	103,946	100	.
2005	296	282,798	103,194	101	.
2006	308	288,372	104,103	100	.
2007	306	294,413	104,598	99	.
2008	302	298,580	104,718	99	.
2009	306	300,422	104,081	98	.
2010	303	303,875	103,382	97	.
2011	291	299,952	101,535	97	.
2012	271	298,068	101,180	101	.
2013	280	297,689	101,232	98	.
2014	276	296,956	100,634	99	.
2015	274	295,799	99,719	99	.
2016	266	291,536	98,520	99	.
2017	272	295,748	99,542	97	.
2018	275	298,105	99,499	97	.
2019	268	302,017	100,227	99	.
2020	260	292,583	96,477	100	.

**BEA EMPLOYMENT: ACCOMMODATION AND FOOD SERVICES**

U.S. Bureau of Economic Analysis, Regional Economic Information System (REIS)

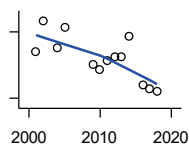
Year	County	State of Kansas	Non Metro Kansas	County Rank	Per 1000 or \$ Per Capita
2001	.	103,353	.	.	.
2002	.	103,692	.	.	.
2003	.	105,138	.	.	.
2004	.	106,694	.	.	.
2005	.	107,303	.	.	.
2006	.	109,888	.	.	.
2007	.	110,863	.	.	.
2008	.	111,092	.	.	.
2009	.	109,353	.	.	.
2010	.	108,628	.	.	.
2011	.	110,514	.	.	.
2012	.	112,574	.	.	.
2013	.	114,102	.	.	.
2014	.	115,768	.	.	.
2015	.	118,503	.	.	.
2016	.	119,764	.	.	.

County: county value. Kansas: state value. County Rank: highest county value ranked #1. (\$000): thousands of dollars. Nonmetro Kansas: Kansas total less Metropolitan Areas as defined by the Office of Management and Budget (OMB; released 3/6/2020). Per 1000: For nonmoney amounts, Per 1000=(county value / county population for the same year as the data) x 1000. \$ Per capita=(county value / county population for the same year as the data). Value= . indicates missing or suppressed data or value not calculated.

**Employment**

BEA EMPLOYMENT: OTHER SERVICES, EXCEPT PUBLIC ADMINISTRATION

U.S. Bureau of Economic Analysis, Regional Economic Information System (REIS)

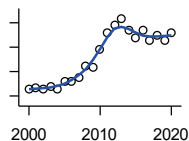


Year	County	State of Kansas	Non Metro Kansas	County Rank	Per 1000 or \$ Per Capita
2001	71	92,176	.	89	.
2002	85	95,350	.	87	.
2003	.	95,821	32,629	.	.
2004	73	95,610	.	88	.
2005	82	95,930	32,555	88	.
2006	.	96,413	.	.	.
2007	.	98,444	.	.	.
2008	.	96,705	.	.	.
2009	65	95,534	.	83	.
2010	63	93,302	.	81	.
2011	67	94,865	.	82	.
2012	69	94,977	.	78	.
2013	69	95,471	.	81	.
2014	78	97,806	.	79	.
2015	.	98,041	.	.	.
2016	56	97,219	.	78	.
2017	54	96,568	.	80	.
2018	53	98,645	.	83	.

**Income**

BEA PER CAPITA PERSONAL INCOME (\$)

U.S. Bureau of Economic Analysis, Regional Economic Information System (REIS)

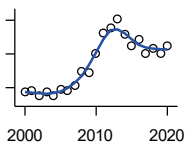


Year	County	State of Kansas	Non Metro Kansas	County Rank	Per 1000 or \$ Per Capita
2000	25,277	28,253	23,116	27	.
2001	26,842	29,112	24,576	25	.
2002	25,358	29,248	24,314	33	.
2003	27,717	30,074	26,017	38	.
2004	26,017	30,843	26,583	65	.
2005	31,426	32,545	28,356	28	.
2006	31,410	35,690	29,782	37	.
2007	35,060	38,057	32,034	33	.
2008	44,853	41,257	35,211	10	.
2009	43,838	39,431	33,876	9	.
2010	58,275	39,960	35,795	2	.
2011	71,628	43,015	39,041	3	.
2012	77,662	45,294	39,660	1	.
2013	83,422	46,174	41,747	3	.
2014	73,647	47,013	41,042	3	.
2015	67,355	47,332	40,638	3	.
2016	73,583	47,326	40,797	2	.
2017	65,103	48,756	41,314	4	.
2018	69,738	50,811	43,283	3	.
2019	66,005	52,820	44,491	4	.
2020	72,211	55,677	48,415	5	.

County: county value. Kansas: state value. County Rank: highest county value ranked #1. (\$000): thousands of dollars. Nonmetro Kansas: Kansas total less Metropolitan Areas as defined by the Office of Management and Budget (OMB; released 3/6/2020). Per 1000: For nonmoney amounts, Per 1000=(county value / county population for the same year as the data) x 1000. \$ Per capita=(county value / county population for the same year as the data). Value= . indicates missing or suppressed data or value not calculated.

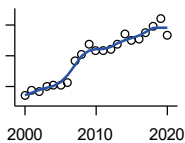
**Income**

**SOURCES OF PERSONAL INCOME:  
TOTAL PERSONAL INCOME (\$000)**



U.S. Bureau of Economic Analysis,  
Regional Economic Information System  
(REIS)

Year	County	State of Kansas	Non Metro Kansas	County Rank	Per 1000 or \$ Per Capita
2000	54,219	76,105,125	22,273,838	101	25,159.6
2001	56,476	78,664,651	23,411,174	101	26,842.2
2002	50,234	79,365,190	23,000,314	101	25,357.9
2003	54,214	81,890,340	24,494,191	103	27,716.8
2004	49,849	84,335,940	24,924,467	103	26,017.2
2005	58,076	89,346,228	26,452,291	103	31,426.4
2006	55,910	98,610,188	27,661,596	102	31,410.1
2007	61,811	105,943,199	29,715,946	103	35,060.1
2008	78,762	115,852,478	32,614,565	101	44,853.1
2009	77,987	111,697,350	31,394,702	100	43,837.5
2010	101,165	114,239,828	33,291,419	97	57,808.6
2011	124,847	123,558,772	36,221,488	94	71,627.7
2012	130,627	130,948,127	36,696,759	91	77,569.5
2013	141,650	133,979,908	38,513,959	95	83,421.7
2014	122,696	136,878,718	37,680,598	95	73,647.1
2015	109,788	138,336,768	37,081,851	97	67,354.6
2016	117,439	138,533,890	36,930,885	92	73,721.9
2017	100,845	142,729,689	37,104,963	99	65,145.3
2018	107,048	148,955,739	38,589,364	99	69,241.9
2019	100,789	154,961,001	39,424,148	99	65,660.6
2020	109,616	163,462,179	42,618,591	100	69,641.7



**SOURCES OF PERSONAL INCOME:  
WAGES AND SALARIES (\$000)**

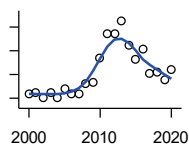
U.S. Bureau of Economic Analysis,  
Regional Economic Information System  
(REIS)

Year	County	State of Kansas	Non Metro Kansas	County Rank	Per 1000 or \$ Per Capita
2000	18,477	41,766,878	10,254,250	97	8,574.0
2001	19,304	43,269,734	10,518,206	96	9,174.9
2002	19,158	43,875,159	10,696,876	98	9,670.9
2003	19,941	44,488,560	10,894,971	97	10,194.8
2004	20,290	46,702,068	11,333,617	97	10,589.8
2005	20,117	48,537,956	11,614,130	99	10,885.8
2006	20,715	52,083,584	12,299,340	99	11,637.6
2007	24,178	55,442,368	13,093,908	95	13,714.1
2008	25,231	57,623,385	13,647,143	95	14,368.5
2009	26,946	55,605,578	13,199,674	94	15,146.7
2010	25,871	56,089,711	13,345,291	95	14,783.4
2011	25,744	58,104,706	13,856,458	96	14,769.9
2012	26,141	60,616,457	14,473,599	97	15,523.2
2013	26,786	61,872,023	14,781,792	96	15,775.0
2014	28,481	64,457,652	15,385,500	96	17,095.4
2015	27,578	66,729,598	15,454,485	97	16,919.0
2016	27,745	67,253,399	15,422,058	97	17,416.8
2017	28,824	68,830,861	15,731,853	96	18,620.2
2018	29,761	71,580,544	16,311,725	96	19,250.3
2019	31,057	74,404,771	16,882,299	96	20,232.6
2020	28,435	75,798,310	17,251,300	97	18,065.4

County: county value. Kansas: state value. County Rank: highest county value ranked #1. (\$000): thousands of dollars. Nonmetro Kansas: Kansas total less Metropolitan Areas as defined by the Office of Management and Budget (OMB; released 3/6/2020). Per 1000: For nonmoney amounts, Per 1000=(county value / county population for the same year as the data) x 1000. \$ Per capita=(county value / county population for the same year as the data). Value= . indicates missing or suppressed data or value not calculated.

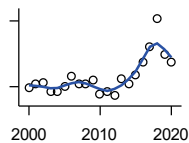
**Income**

**SOURCES OF PERSONAL INCOME:  
PROPRIETORS-FARM (\$000)**



U.S. Bureau of Economic Analysis,  
Regional Economic Information System  
(REIS)

Year	County	State of Kansas	Non Metro Kansas	County Rank	Per 1000 or \$ Per Capita
2000	4,140	668,539	673,707	56	1,921.1
2001	5,203	779,473	769,336	54	2,472.9
2002	791	145,064	187,033	53	399.3
2003	4,218	1,281,076	1,195,298	82	2,156.4
2004	1	1,149,425	938,524	99	0.5
2005	8,334	1,609,604	1,469,139	73	4,509.7
2006	3,178	766,047	663,735	57	1,785.4
2007	3,386	1,131,607	1,040,350	82	1,920.6
2008	12,407	1,582,092	1,404,900	65	7,065.5
2009	13,323	1,585,995	1,390,349	54	7,489.0
2010	33,611	2,149,482	2,029,067	20	19,206.3
2011	53,864	3,188,519	2,989,880	19	30,903.0
2012	54,405	2,519,555	2,296,875	9	32,307.0
2013	65,231	4,499,190	4,158,419	19	38,416.4
2014	44,335	2,231,181	2,157,992	15	26,611.6
2015	33,052	1,300,733	1,294,370	14	20,277.3
2016	40,897	1,577,060	1,564,511	14	25,672.9
2017	20,398	838,480	838,290	16	13,177.0
2018	21,623	1,050,662	971,690	14	13,986.4
2019	15,147	998,038	878,247	29	9,867.8
2020	23,805	2,151,349	1,887,881	32	15,123.9



**SOURCES OF PERSONAL INCOME:  
PROPRIETORS-NONFARM (\$000)**

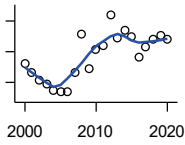
U.S. Bureau of Economic Analysis,  
Regional Economic Information System  
(REIS)

Year	County	State of Kansas	Non Metro Kansas	County Rank	Per 1000 or \$ Per Capita
2000	3,865	4,580,476	1,493,470	98	1,793.5
2001	4,302	4,510,530	1,855,621	102	2,044.7
2002	4,329	5,036,100	1,966,784	103	2,185.3
2003	3,518	4,719,377	1,916,735	103	1,798.6
2004	3,521	4,003,922	2,073,898	102	1,837.7
2005	4,032	4,455,294	2,200,971	103	2,181.8
2006	4,977	7,343,524	2,694,895	101	2,796.1
2007	4,207	7,280,197	2,436,574	101	2,386.3
2008	4,204	9,255,953	2,971,923	102	2,394.1
2009	4,580	9,323,551	2,858,848	103	2,574.5
2010	3,319	9,658,261	3,498,040	105	1,896.6
2011	3,555	12,196,566	4,186,007	105	2,039.6
2012	3,159	15,773,140	4,446,004	105	1,875.9
2013	4,733	16,441,660	4,492,127	105	2,787.4
2014	4,277	15,954,254	4,455,081	104	2,567.2
2015	5,089	15,536,116	4,386,172	103	3,122.1
2016	6,283	14,075,310	3,783,829	102	3,944.1
2017	7,694	15,371,957	3,908,254	104	4,970.3
2018	10,219	15,716,877	4,238,775	100	6,610.0
2019	6,974	16,705,488	3,921,051	103	4,543.3
2020	6,236	16,718,952	3,823,329	104	3,961.9

County: county value. Kansas: state value. County Rank: highest county value ranked #1. (\$000): thousands of dollars. Nonmetro Kansas: Kansas total less Metropolitan Areas as defined by the Office of Management and Budget (OMB; released 3/6/2020). Per 1000: For nonmoney amounts, Per 1000=(county value / county population for the same year as the data) x 1000. \$ Per capita=(county value / county population for the same year as the data). Value= . indicates missing or suppressed data or value not calculated.

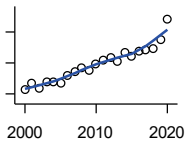
**Income**

**SOURCES OF PERSONAL INCOME:  
DIVIDENDS,INTEREST,RENT(\$000)**



U.S. Bureau of Economic Analysis,  
Regional Economic Information System  
(REIS)

Year	County	State of Kansas	Non Metro Kansas	County Rank	Per 1000 or \$ Per Capita
2000	16,427	15,916,201	4,736,921	94	7,622.7
2001	15,224	15,770,830	4,699,417	97	7,235.7
2002	14,249	15,111,563	4,316,887	95	7,192.8
2003	13,707	15,370,764	4,360,311	97	7,007.7
2004	12,917	15,820,469	4,251,925	97	6,741.6
2005	12,719	17,147,069	4,485,387	98	6,882.6
2006	12,804	20,117,848	4,945,184	99	7,193.3
2007	15,267	22,269,186	5,526,219	99	8,659.7
2008	20,250	24,972,485	6,180,979	96	11,531.9
2009	15,704	21,453,879	5,308,474	98	8,827.4
2010	18,310	20,861,351	5,414,285	93	10,462.9
2011	18,838	23,387,567	5,781,075	96	10,807.8
2012	22,801	25,689,368	6,389,505	93	13,539.8
2013	19,710	24,832,212	5,984,811	96	11,607.8
2014	20,765	27,412,684	6,403,356	98	12,464.0
2015	19,886	27,244,414	6,423,685	96	12,200.0
2016	17,322	27,293,441	6,389,161	101	10,873.8
2017	18,698	28,385,472	6,700,156	99	12,078.8
2018	19,651	29,953,419	6,772,504	98	12,710.9
2019	20,090	30,820,276	6,957,987	98	13,087.9
2020	19,579	30,283,520	6,844,745	97	12,439.0



**SOURCES OF PERSONAL INCOME:  
TRANSFER PAYMENTS (\$000)**

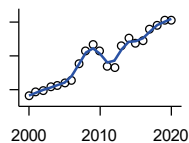
U.S. Bureau of Economic Analysis,  
Regional Economic Information System  
(REIS)

Year	County	State of Kansas	Non Metro Kansas	County Rank	Per 1000 or \$ Per Capita
2000	10,692	9,650,835	4,036,781	99	4,961.5
2001	11,644	10,549,124	4,355,457	99	5,534.2
2002	10,898	11,208,997	4,553,978	100	5,501.3
2003	11,949	11,709,049	4,702,911	100	6,108.9
2004	11,873	12,040,452	4,802,536	99	6,196.8
2005	11,650	12,696,735	5,059,314	101	6,304.1
2006	12,961	13,642,787	5,455,207	100	7,281.5
2007	13,669	14,686,821	5,775,024	100	7,753.3
2008	14,286	16,552,460	6,322,722	101	8,135.5
2009	13,826	18,025,603	6,790,962	101	7,771.8
2010	14,919	19,189,749	7,089,258	101	8,525.1
2011	15,474	19,625,770	7,255,825	101	8,877.8
2012	15,888	19,354,458	7,148,177	101	9,434.7
2013	15,166	19,639,358	7,185,636	101	8,931.7
2014	16,633	20,380,970	7,399,809	100	9,983.8
2015	16,114	21,116,856	7,623,577	101	9,885.9
2016	16,982	21,884,629	7,886,000	102	10,660.4
2017	17,088	22,559,744	8,062,517	101	11,038.8
2018	17,274	23,628,033	8,393,617	101	11,173.4
2019	18,748	25,050,174	8,845,371	101	12,213.7
2020	22,168	32,319,421	11,074,190	101	14,083.9

County: county value. Kansas: state value. County Rank: highest county value ranked #1. (\$000): thousands of dollars. Nonmetro Kansas: Kansas total less Metropolitan Areas as defined by the Office of Management and Budget (OMB; released 3/6/2020). Per 1000: For nonmoney amounts, Per 1000=(county value / county population for the same year as the data) x 1000. \$ Per capita=(county value / county population for the same year as the data). Value= . indicates missing or suppressed data or value not calculated.

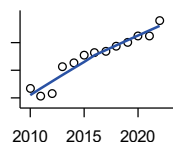
**Income**

**SOURCES OF PERSONAL INCOME:  
LESS SOCIAL INSURANCE (\$000)**



U.S. Bureau of Economic Analysis,  
Regional Economic Information System  
(REIS)

Year	County	State of Kansas	Non Metro Kansas	County Rank	Per 1000 or \$ Per Capita
2000	2,806	6,655,813	1,663,044	100	1,302.1
2001	2,948	6,869,934	1,740,915	100	1,401.1
2002	2,969	7,008,361	1,778,636	100	1,498.7
2003	3,077	7,172,781	1,821,858	100	1,573.1
2004	3,121	7,556,560	1,904,014	100	1,628.9
2005	3,211	7,911,241	1,986,907	101	1,737.6
2006	3,289	8,406,937	2,090,313	101	1,847.8
2007	3,774	8,806,941	2,180,587	101	2,140.7
2008	4,161	9,207,010	2,299,399	100	2,369.6
2009	4,325	9,002,859	2,248,703	99	2,431.1
2010	4,129	9,235,760	2,321,191	99	2,359.4
2011	3,680	8,515,986	2,139,991	101	2,111.3
2012	3,670	8,816,128	2,195,919	101	2,179.3
2013	4,316	10,225,399	2,540,439	100	2,541.8
2014	4,514	10,609,601	2,635,009	101	2,709.5
2015	4,369	11,028,204	2,663,038	101	2,680.4
2016	4,455	10,915,915	2,604,579	100	2,796.6
2017	4,775	11,224,218	2,669,954	100	3,084.6
2018	4,901	11,749,229	2,797,106	100	3,170.1
2019	5,058	12,245,451	2,889,336	100	3,295.1
2020	5,067	12,715,152	3,027,656	100	3,219.2



**HUD MEDIAN FAMILY INCOME**

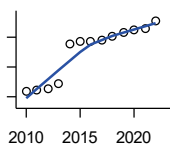
U.S. Department of Housing and Urban  
Development (HUD)

Year	County	State of Kansas	Non Metro Kansas	County Rank	Per 1000 or \$ Per Capita
2010	53,200	63,100	.	47	.
2011	50,700	64,300	.	76	.
2012	51,400	65,200	.	76	.
2013	61,400	64,800	.	28	.
2014	62,500	64,400	.	31	.
2015	65,400	66,300	.	24	.
2016	66,600	66,700	.	12	.
2017	66,800	68,500	.	24	.
2018	68,900	73,100	.	20	.
2019	70,300	75,200	.	26	.
2020	72,500	76,500	.	25	.
2021	72,300	77,400	.	33	.
2022	78,000	87,800	.	38	.

County: county value. Kansas: state value. County Rank: highest county value ranked #1. (\$000): thousands of dollars. Nonmetro Kansas: Kansas total less Metropolitan Areas as defined by the Office of Management and Budget (OMB; released 3/6/2020). Per 1000: For nonmoney amounts, Per 1000=(county value / county population for the same year as the data) x 1000. \$ Per capita=(county value / county population for the same year as the data). Value= . indicates missing or suppressed data or value not calculated.

**Income**

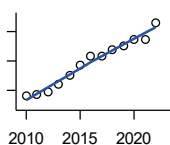
**HUD 30% LOW-TO-MEDIUM INCOME (LMI) LIMIT - 4 PERSONS**



U.S. Department of Housing and Urban Development (HUD)

Year	County	State of Kansas	Non Metro Kansas	County Rank	Per 1000 or \$ Per Capita
2010	15,950	.	.	47	.
2011	16,100	.	.	105	.
2012	16,300	.	.	105	.
2013	17,150	.	.	54	.
2014	23,850	.	.	105	.
2015	24,250	.	.	105	.
2016	24,300	.	.	105	.
2017	24,600	.	.	105	.
2018	25,100	21,950	.	105	.
2019	25,750	22,550	.	105	.
2020	26,200	22,950	.	105	.
2021	26,500	23,200	.	105	.
2022	27,750	25,950	.	105	.

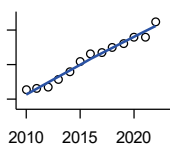
**HUD 50% LOW-TO-MEDIUM INCOME (LMI) LIMIT - 4 PERSONS**



U.S. Department of Housing and Urban Development (HUD)

Year	County	State of Kansas	Non Metro Kansas	County Rank	Per 1000 or \$ Per Capita
2010	26,600	.	.	47	.
2011	26,850	.	.	105	.
2012	27,200	.	.	105	.
2013	28,550	.	.	54	.
2014	29,950	.	.	35	.
2015	31,700	.	.	27	.
2016	33,250	.	.	12	.
2017	33,400	.	.	22	.
2018	34,450	36,550	.	20	.
2019	35,150	37,600	.	26	.
2020	36,250	38,250	.	26	.
2021	36,150	38,700	.	32	.
2022	39,000	43,300	.	34	.

**HUD 80% LOW-TO-MEDIUM INCOME (LMI) LIMIT - 4 PERSONS**



U.S. Department of Housing and Urban Development (HUD)

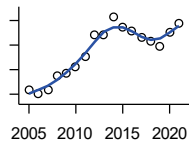
Year	County	State of Kansas	Non Metro Kansas	County Rank	Per 1000 or \$ Per Capita
2010	42,550	.	.	47	.
2011	42,950	.	.	105	.
2012	43,500	.	.	105	.
2013	45,650	.	.	54	.
2014	47,900	.	.	35	.
2015	50,700	.	.	27	.
2016	53,200	.	.	12	.
2017	53,450	.	.	22	.
2018	55,100	58,500	.	20	.
2019	56,250	60,150	.	26	.
2020	58,000	61,200	.	26	.
2021	57,850	61,900	.	32	.
2022	62,400	69,250	.	34	.

County: county value. Kansas: state value. County Rank: highest county value ranked #1. (\$000): thousands of dollars. Nonmetro Kansas: Kansas total less Metropolitan Areas as defined by the Office of Management and Budget (OMB; released 3/6/2020). Per 1000: For nonmoney amounts, Per 1000=(county value / county population for the same year as the data) x 1000. \$ Per capita=(county value / county population for the same year as the data). Value= . indicates missing or suppressed data or value not calculated.



**Banking**

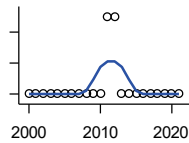
**BANK DEPOSITS** (1984-2004 in thousands; 2005- in millions)



Federal Deposit Insurance Corporation, Data Book, Operating Banks and Branches

Year	County	State of Kansas	Non Metro Kansas	County Rank	Per 1000 or \$ Per Capita
2005	64	48,304	17,000	93	34.6
2006	60	50,668	17,586	96	33.7
2007	63	54,057	18,517	97	35.7
2008	75	57,869	19,628	94	42.7
2009	77	57,763	20,031	93	43.3
2010	82	60,031	20,678	92	46.9
2011	91	61,094	21,347	90	52.2
2012	108	62,910	22,481	85	64.1
2013	108	64,547	22,795	85	63.6
2014	123	66,538	23,338	80	73.8
2015	115	68,160	23,367	82	70.6
2016	111	70,381	23,420	82	69.7
2017	106	73,329	23,928	85	68.5
2018	103	74,623	24,100	89	66.6
2019	99	76,436	24,488	91	64.5
2020	110	88,563	27,547	91	69.9
2021	118	97,055	30,122	90	75.4

**NUMBER OF BANKS**



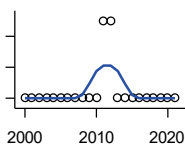
Federal Deposit Insurance Corporation, Data Book, Operating Banks and Branches

Year	County	State of Kansas	Non Metro Kansas	County Rank	Per 1000 or \$ Per Capita
2000	2	410	145	102	.
2001	2	410	136	102	.
2002	2	404	129	102	.
2003	2	397	121	102	.
2004	2	394	112	102	.
2005	2	388	101	102	.
2006	2	385	94	102	.
2007	2	382	91	102	.
2008	2	378	82	102	.
2009	2	374	79	102	.
2010	2	367	70	102	.
2011	3	359	61	92	.
2012	3	348	57	92	.
2013	2	332	45	101	.
2014	2	329	41	101	.
2015	2	320	31	101	.
2016	2	314	24	101	.
2017	2	301	13	102	.
2018	2	289	7	102	.
2019	2	279	3	102	.
2020	2	271	-1	102	.
2021	2	270	-6	102	.

County: county value. Kansas: state value. County Rank: highest county value ranked #1. (\$000): thousands of dollars. Nonmetro Kansas: Kansas total less Metropolitan Areas as defined by the Office of Management and Budget (OMB; released 3/6/2020). Per 1000: For nonmoney amounts, Per 1000=(county value / county population for the same year as the data) x 1000. \$ Per capita=(county value / county population for the same year as the data). Value= . indicates missing or suppressed data or value not calculated.

**Banking**

**NUMBER OF BANKING OFFICES**

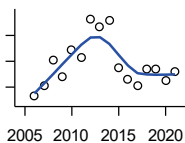


Federal Deposit Insurance Corporation, Data Book, Operating Banks and Branches

Year	County	State of Kansas	Non Metro Kansas	County Rank	Per 1000 or \$ Per Capita
2000	2	1,398	703	103	.
2001	2	1,424	708	103	.
2002	2	1,447	704	103	.
2003	2	1,461	708	103	.
2004	2	1,485	708	103	.
2005	2	1,505	711	103	.
2006	2	1,518	711	103	.
2007	2	1,543	717	103	.
2008	2	1,556	717	103	.
2009	2	1,569	716	103	.
2010	2	1,561	710	103	.
2011	3	1,559	707	97	.
2012	3	1,533	702	97	.
2013	2	1,518	696	103	.
2014	2	1,491	685	103	.
2015	2	1,472	675	103	.
2016	2	1,465	668	103	.
2017	2	1,452	666	104	.
2018	2	1,439	660	104	.
2019	2	1,439	663	104	.
2020	2	1,416	653	104	.
2021	2	1,392	641	104	.

**Government**

**TANGIBLE ASSESSED VALUATION (KDoR, million\$; 2006-)**



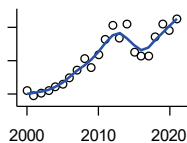
Kansas Department of Revenue, Division of Property Valuation, Statistical Report of Property Assessment and Taxation

Year	County	State of Kansas	Non Metro Kansas	County Rank	Per 1000 or \$ Per Capita
2006	36.4	28,964.3	10,316.9	92	20.4
2007	40.6	30,086.9	10,335.9	88	23.0
2008	50.7	31,000.3	10,856.9	82	28.9
2009	44.1	30,312.3	10,555.6	86	24.8
2010	54.4	29,450.2	10,158.7	77	31.1
2011	51.5	29,963.6	10,572.3	80	29.5
2012	66.3	30,382.9	10,876.2	75	39.4
2013	63.5	30,850.2	11,044.4	79	37.4
2014	65.9	31,783.0	11,388.9	80	39.6
2015	47.7	32,335.7	11,037.8	90	29.2
2016	42.9	33,156.3	10,889.6	97	26.9
2017	40.5	34,754.5	11,439.0	96	26.2
2018	46.9	36,566.1	11,907.1	96	30.3
2019	46.8	38,255.2	12,336.7	96	30.5
2020	42.5	39,333.9	12,219.3	96	27.0
2021	46.0	40,812.0	12,601.5	95	29.4

County: county value. Kansas: state value. County Rank: highest county value ranked #1. (\$000): thousands of dollars. Nonmetro Kansas: Kansas total less Metropolitan Areas as defined by the Office of Management and Budget (OMB; released 3/6/2020). Per 1000: For nonmoney amounts, Per 1000=(county value / county population for the same year as the data) x 1000. \$ Per capita=(county value / county population for the same year as the data). Value= . indicates missing or suppressed data or value not calculated.

**Government**

**SALES TAX COLLECTIONS (\$)**

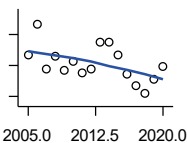


Kansas Department of Revenue. Use tax collections included beginning in calendar year 2018.

Year	County	State of Kansas	Non Metro Kansas	County Rank	Per 1000 or \$ Per Capita
2000	548,652	1,475,831,808	432,761,608	101	254,594.9
2001	466,952	1,481,026,688	426,316,284	101	221,935.4
2002	517,451	1,561,316,864	443,986,950	101	261,207.0
2003	556,213	1,626,782,976	461,658,700	101	284,362.5
2004	618,038	1,691,899,008	480,309,725	101	322,566.8
2005	637,593	1,744,980,352	497,494,867	102	345,017.9
2006	737,478	1,851,694,720	532,233,047	101	414,313.5
2007	848,715	1,917,546,752	559,319,583	101	481,404.1
2008	1,035,053	1,990,655,744	589,725,773	95	589,437.9
2009	887,680	1,866,223,078	548,627,132	98	498,977.0
2010	1,089,039	2,075,193,413	617,409,982	96	622,308.0
2011	1,312,334	2,347,193,367	702,671,534	93	752,916.8
2012	1,521,036	2,456,292,294	740,196,106	90	903,228.1
2013	1,339,509	2,489,204,048	746,226,565	98	788,874.3
2014	1,544,884	2,539,886,774	760,474,019	94	927,301.1
2015	1,120,296	2,642,374,740	750,090,163	100	687,298.3
2016	1,067,171	2,732,611,350	749,030,133	103	669,912.5
2017	1,066,688	2,726,104,521	744,246,491	101	689,075.2
2018	1,360,483	3,277,299,125	893,564,480	102	880,002.2
2019	1,558,275	3,395,631,405	939,607,762	97	1,015,162.8
2020	1,443,635	3,489,306,791	984,218,931	103	917,176.0
2021	1,621,005	3,981,293,227	1,098,391,422	102	1,035,785.9

**Crime**

**CRIME INDEX OFFENSES**



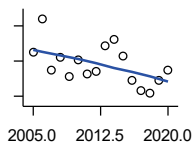
Kansas Bureau of Investigation, Note: Data are aggregated from reports by individual police departments and subject to be incomplete.

Year	County	State of Kansas	Non Metro Kansas	County Rank	Per 1000 or \$ Per Capita
2005	27	111,856	31,630	87	14.6
2006	47	110,032	.	72	26.4
2007	18	111,035	29,921	91	10.2
2008	26	93,996	27,342	88	14.8
2009	17	98,757	27,620	96	9.6
2010	23	98,354	26,909	86	13.1
2011	15	96,638	25,765	95	8.6
2012	18	98,914	26,963	96	10.7
2013	35	93,054	24,488	79	20.6
2014	35	86,323	23,341	81	21.0
2015	27	88,590	21,580	82	16.6
2016	14	90,589	21,565	91	8.8
2017	7	93,091	22,622	99	4.5
2018	2	92,062	20,325	101	1.3
2019	11	87,008	18,547	96	7.2
2020	19	87,346	17,762	85	12.1

County: county value. Kansas: state value. County Rank: highest county value ranked #1. (\$000): thousands of dollars. Nonmetro Kansas: Kansas total less Metropolitan Areas as defined by the Office of Management and Budget (OMB; released 3/6/2020). Per 1000: For nonmoney amounts, Per 1000=(county value / county population for the same year as the data) x 1000. \$ Per capita=(county value / county population for the same year as the data). Value= . indicates missing or suppressed data or value not calculated.

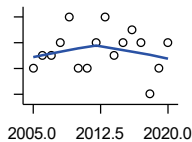
**Crime**

**PROPERTY CRIMES**



Kansas Bureau of Investigation, Note: Data are aggregated from reports by individual police departments and subject to be incomplete.

Year	County	State of Kansas	Non Metro Kansas	County Rank	Per 1000 or \$ Per Capita
2005	25	101,414	29,042	85	13.5
2006	44	99,110	.	70	24.7
2007	15	99,632	26,856	92	8.5
2008	22	83,964	24,367	89	12.5
2009	11	87,658	24,825	95	6.2
2010	21	87,926	24,133	85	12.0
2011	13	86,547	23,274	94	7.5
2012	14	88,707	24,220	95	8.3
2013	29	83,551	22,028	82	17.1
2014	32	76,794	20,858	80	19.2
2015	23	77,997	19,138	82	14.1
2016	9	79,549	19,207	96	5.6
2017	3	81,349	19,981	101	1.9
2018	2	79,695	17,769	100	1.3
2019	9	74,314	15,892	93	5.9
2020	15	73,450	15,100	85	9.5



**VIOLENT CRIMES**

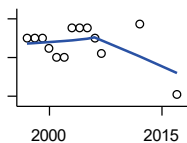
Kansas Bureau of Investigation, Note: Data are aggregated from reports by individual police departments and subject to be incomplete.

Year	County	State of Kansas	Non Metro Kansas	County Rank	Per 1000 or \$ Per Capita
2005	2	10,442	2,588	91	1.1
2006	3	10,922	.	79	1.7
2007	3	11,403	3,065	86	1.7
2008	4	10,032	2,975	82	2.3
2009	6	11,099	2,795	73	3.4
2010	2	10,428	2,776	93	1.1
2011	2	10,091	2,491	92	1.1
2012	4	10,207	2,743	85	2.4
2013	6	9,503	2,460	75	3.5
2014	3	9,529	2,483	90	1.8
2015	4	10,593	2,442	82	2.5
2016	5	11,040	2,358	70	3.1
2017	4	11,742	2,641	78	2.6
2018	0	12,367	2,556	104	0.0
2019	2	12,694	2,655	94	1.3
2020	4	13,896	2,662	85	2.5

County: county value. Kansas: state value. County Rank: highest county value ranked #1. (\$000): thousands of dollars. Nonmetro Kansas: Kansas total less Metropolitan Areas as defined by the Office of Management and Budget (OMB; released 3/6/2020). Per 1000: For nonmoney amounts, Per 1000=(county value / county population for the same year as the data) x 1000. \$ Per capita=(county value / county population for the same year as the data). Value= . indicates missing or suppressed data or value not calculated.

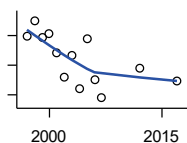
**Agriculture**

**NUMBER OF FARMS**



Kansas Agricultural Statistics, Kansas Farm Facts

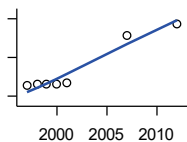
Year	County	State of Kansas	Non Metro Kansas	County Rank	Per 1000 or \$ Per Capita
1997	300	64,000	47,900	90	137.0
1998	300	65,000	48,850	91	133.3
1999	300	65,000	48,850	91	137.6
2000	290	64,000	48,030	93	134.6
2001	280	63,000	47,200	94	133.1
2002	280	63,000	47,200	94	141.3
2003	310	64,500	48,150	94	158.5
2004	310	64,500	48,150	94	161.8
2005	310	64,500	48,150	94	167.7
2006	300	64,000	47,650	97	168.5
2007	284	65,531	48,179	98	161.1
2012	315	61,773	45,655	90	187.1
2017	242	58,569	42,404	96	156.3



**TOTAL ACRES HARVESTED**

Kansas Agricultural Statistics, Kansas Farm Facts

Year	County	State of Kansas	Non Metro Kansas	County Rank	Per 1000 or \$ Per Capita
1997	179,260	22,846,000	19,430,580	65	81,891.3
1998	189,820	22,143,500	18,943,650	58	84,327.0
1999	178,450	21,708,900	18,581,750	60	81,857.8
2000	181,070	21,639,000	18,528,870	62	84,023.2
2001	168,160	21,847,900	18,689,750	70	79,924.0
2002	151,490	20,230,400	17,089,120	72	76,471.5
2003	166,540	21,827,700	18,661,920	73	85,143.1
2004	144,060	20,876,900	17,721,500	79	75,187.9
2005	177,430	21,936,500	18,807,930	65	96,011.9
2006	150,290	21,412,700	18,291,120	79	84,432.6
2007	137,761	19,886,655	17,164,743	75	78,140.1
2012	157,614	21,043,596	17,966,843	72	93,595.0
2017	149,389	21,837,465	18,543,057	81	96,504.5



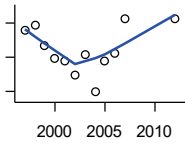
**VALUE: LIVESTOCK AND POULTRY (\$000)**

Kansas Agricultural Statistics, Kansas Farm Facts

Year	County	State of Kansas	Non Metro Kansas	County Rank	Per 1000 or \$ Per Capita
1997	26,911	2,806,445	2,500,305	31	12,293.7
1998	29,438	2,670,432	2,378,007	26	13,077.7
1999	29,412	2,849,061	2,554,528	30	13,491.7
2000	30,021	2,901,469	2,609,032	29	13,930.9
2001	35,301	2,693,274	2,437,187	18	16,778.0
2007	155,924	9,525,971	.	13	88,442.4
2012	185,703	11,476,571	10,883,216	13	110,274.9

County: county value. Kansas: state value. County Rank: highest county value ranked #1. (\$000): thousands of dollars. Nonmetro Kansas: Kansas total less Metropolitan Areas as defined by the Office of Management and Budget (OMB; released 3/6/2020). Per 1000: For nonmoney amounts, Per 1000=(county value / county population for the same year as the data) x 1000. \$ Per capita=(county value / county population for the same year as the data). Value= . indicates missing or suppressed data or value not calculated.

**Agriculture**



VALUE:FIELD CROPS (\$000)  
EXCLUDING GOVERNMENT  
PROGRAM PAYMENTS

Kansas Agricultural Statistics, Kansas  
Farm Facts

Year	County	State of Kansas	Non Metro Kansas	County Rank	Per 1000 or \$ Per Capita
1997	27,810	4,474,942	3,800,365	80	12,704.4
1998	29,236	3,594,319	3,124,409	54	12,988.0
1999	23,300	3,118,193	2,728,319	59	10,688.1
2000	19,742	2,915,660	2,540,052	66	9,161.0
2001	18,993	3,283,117	2,857,136	84	9,027.1
2002	14,890	3,011,855	2,560,580	85	7,516.4
2003	20,804	3,623,255	3,150,629	80	10,636.0
2004	9,760	3,445,688	2,896,603	101	5,093.9
2005	18,998	3,678,123	3,182,677	88	10,280.3
2006	21,118	4,308,716	3,684,132	87	11,864.0
2007	31,082	4,887,212	.	67	17,630.2
2012	31,124	6,983,993	6,044,551	87	18,482.2

County: county value. Kansas: state value. County Rank: highest county value ranked #1. (\$000): thousands of dollars. Nonmetro Kansas: Kansas total less Metropolitan Areas as defined by the Office of Management and Budget (OMB; released 3/6/2020). Per 1000: For nonmoney amounts, Per 1000=(county value / county population for the same year as the data) x 1000. \$ Per capita=(county value / county population for the same year as the data). Value= . indicates missing or suppressed data or value not calculated.