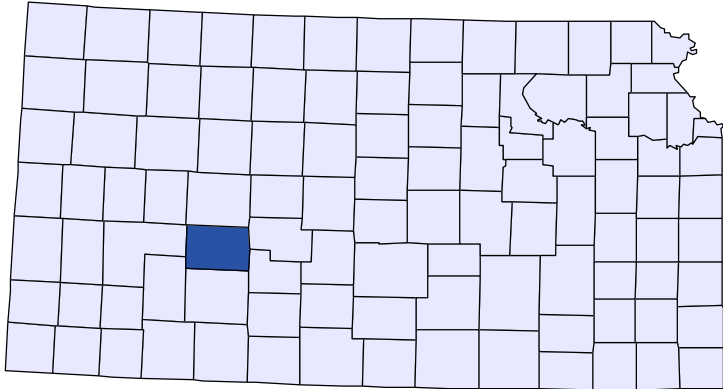




# Kansas County Profiles

## Hodgeman County



The University  
of Kansas

Institute for Policy  
& Social Research

**KU** INSTITUTE FOR POLICY  
& SOCIAL RESEARCH  

---

The University of Kansas

1541 Lilac Lane, Rm. 607  
Blake Hall  
Lawrence, KS 66045-3129

## Foreword

The Kansas County Profile Report is published by the Institute for Policy & Social Research (IPSR) at the University of Kansas with support from the KU University Center project.\* Special thanks to Xanthippe Wedel, senior research data engineer, who compiles and updates the county profiles and Genna Hurd, associate researcher, who provides editorial review.

County reports can be generated for any county in Kansas by simply clicking on the county from the web site:

<https://ipsr.ku.edu/ksdata/kcced/profiles/>

The Kansas County Profile Report contains 12 categories of information: Population, Vital Statistics and Health, Housing, Education, Social Environment, Business, Employment, Income, Banking, Government, Crime, and Agriculture. For more information about Kansas, please refer to the Kansas Statistical Abstract, available online at:

<https://ipsr.ku.edu/ksdata/ksah/>

We are always looking for ways to improve the Kansas County Profile Report and we welcome your suggestions and comments. Please address any correspondence to the Institute for Policy & Social Research, The University of Kansas, 607 Blake Hall, 1541 Lilac Lane, Lawrence, Kansas 66045-3129, e-mail [ipsr@ku.edu](mailto:ipsr@ku.edu) or call 785-864-3701.

*\*The KU University Center is a collaborative effort led by the Institute for Policy & Social Research at the University of Kansas. This project is supported by the Economic Development Administration, U.S. Department of Commerce, through its University Center Program.*

*The mission of EDA is to lead the federal economic development agenda by promoting innovation and competitiveness, preparing American regions for growth and success in the worldwide economy.*

## Kansas County Profiles Table of Contents

### Population

Total Population (Decennial Census)	1
Estimated Population (Current Population Reports)	2
Urban Population	2
Rural Population	3
Net Migration (Decade Ending...)	3
Median Age	3

### Population (Age Groups)

Population Under 18 (Decennial Census)	3
Population Age 18 and Over (Decennial Census)	4
Population Age 65 and Over (Decennial Census)	4
Population Age 85 and Over (Decennial Census)	4

### Vital Statistics and Health

Live Births	5
Deaths	5
Marriages	6
Divorces and Annulments	6
Physicians: M.D. Physicians	7
Physicians: D.O. Physicians	7
Dentists	8
Number of Hospitals	8
Number of Hospital Beds	9

### Housing

Housing Units (Decennial Census)	9
Housing Units (Estimated)	10
Occupied Housing Units	10
Owner Occupied Housing Units	10
Renter Occupied Housing Units	11
Vacant Housing Units	11
Median Value (\$): Owner Occupied Housing Units	11
Median Contract Rent (\$)	12
Fair Market Rent: 2 Bedrooms	12

### Education

Population Age 25 and Over	13
Percent of Population 25+ with High School or Higher Education	13
Percent of Population 25+ with Bachelors Degree or Higher Education	14
Public School Enrollment (FTE- School Year Beginning...)	14
Pupil/Teacher Ratio (School Year Beginning...)	15

## Kansas County Profiles Table of Contents

### Social Environment

Total Child Care Facilities	15
Preschools	16
Food Stamp Beneficiaries	16
Percent of Population Receiving Food Stamps	17
Estimated Number of People in Poverty	17
Estimated Percent of People in Poverty	18
Estimated Number of Related Children Age 5 to 17 in Families in Poverty	18
Estimated Percent of Related Children Age 5 to 17 in Families in Poverty	19
Estimated Number Under 18 in Poverty	19
Estimated Percent Under 18 in Poverty	20

### Business

Establishments: Total	21
Establishments: 1-19 Employees	22
Establishments: 20-99 Employees	22
Establishments: 100-499 Employees	23
Establishments: 500 or More Employees	23
Establishments: Forestry, Fishing, Hunting, and Ag Support	24
Establishments: Mining	24
Establishments: Utilities	25
Establishments: Construction	25
Establishments: Manufacturing	26
Establishments: Wholesale Trade	26
Establishments: Retail Trade	27
Establishments: Transportation and Warehousing	27
Establishments: Information	28
Establishments: Finance and Insurance	28
Establishments: Real Estate, Rental, and Leasing	29
Establishments: Professional, Scientific, and Technical Services	29
Establishments: Management of Companies and Enterprises	30
Establishments: Admin, Support, Waste Management, and Remediation	30
Establishments: Educational Services	31
Establishments: Health Care and Social Assistance	31
Establishments: Arts, Entertainment, and Recreation	32
Establishments: Accommodation and Food Services	32
Establishments: Other Services	33

## Kansas County Profiles Table of Contents

<b>Business</b>	
Total Annual Payroll (\$000)	34
Total Annual Payroll (\$000): Forestry, Fishing, Hunting, and Ag Support	35
Total Annual Payroll (\$000): Mining	35
Total Annual Payroll (\$000): Utilities	36
Total Annual Payroll (\$000): Construction	36
Total Annual Payroll (\$000): Manufacturing	37
Total Annual Payroll (\$000): Wholesale Trade	37
Total Annual Payroll (\$000): Retail Trade	38
Total Annual Payroll (\$000): Transportation and Warehousing	38
Total Annual Payroll (\$000): Information	39
Total Annual Payroll (\$000): Finance and Insurance	39
Total Annual Payroll (\$000): Real Estate, Rental, and Leasing	40
Total Annual Payroll (\$000): Professional, Scientific, and Technical Services	40
Total Annual Payroll (\$000): Management of Companies and Enterprises	41
Total Annual Payroll (\$000): Admin, Support, Waste Management, and Remediation	41
Total Annual Payroll (\$000): Educational Services	42
Total Annual Payroll (\$000): Health Care and Social Assistance	42
Total Annual Payroll (\$000): Arts, Entertainment, and Recreation	43
Total Annual Payroll (\$000): Accommodation and Food Services	43
Total Annual Payroll (\$000): Other Services	44
Nominal Taxable Retail Sales (Million\$)	44
Retail Pull Factor	45
<b>Employment</b>	
Civilian Labor Force (BLS - Place of Residence)	46
Employed (BLS - Place of Residence)	47
Unemployed (BLS - Place of Residence)	48
Unemployment Rate (BLS - Place of Residence)	49
BEA Employment: Total (Place of Work)	49
BEA Employment: Farm	50
BEA Employment: Non-Farm	50
Average Wage per Job (\$)	51
BEA Employment: Forestry, Fishing, Hunting, and Ag Support	51
BEA Employment: Mining	52
BEA Employment: Utilities	52
BEA Employment: Construction	53
BEA Employment: Manufacturing	53
BEA Employment: Wholesale Trade	54
BEA Employment: Retail Trade	54
BEA Employment: Transportation and Warehousing	55
BEA Employment: Information	55
BEA Employment: Finance and Insurance	56
BEA Employment: Real Estate, Rental, and Leasing	56
BEA Employment: Professional and Technical Services	57
BEA Employment: Management of Companies and Enterprises	57
BEA Employment: Administrative and Waste Services	58
BEA Employment: Educational Services	58
BEA Employment: Health Care and Social Assistance	59
BEA Employment: Arts, Entertainment, and Recreation	59
BEA Employment: Government and Government Enterprises	60
BEA Employment: Accommodation and Food Services	60
BEA Employment: Other Services, Except Public Administration	61

## Kansas County Profiles Table of Contents

### Income

BEA Per Capita Personal Income (\$)	61
Sources of Personal Income: Total Personal Income (\$000)	62
Sources of Personal Income: Wages And Salaries (\$000)	62
Sources of Personal Income: Proprietors-Farm (\$000)	63
Sources of Personal Income: Proprietors-Nonfarm (\$000)	63
Sources of Personal Income: Dividends, Interest, Rent (\$000)	64
Sources of Personal Income: Transfer Payments (\$000)	64
Sources of Personal Income: Less Social Insurance (\$000)	65
HUD Median Family Income	65
HUD 30% Low-To-Medium Income (LMI) Limit - 4 Persons	66
HUD 50% Low-To-Medium Income (LMI) Limit - 4 Persons	66
HUD 80% Low-To-Medium Income (LMI) Limit - 4 Persons	66

### Banking

Bank Deposits (\$000)	67
Number of Banks	67
Number of Banking Offices	68

### Government

Tangible Assessed Valuation (million\$)	68
Sales Tax Collections	69

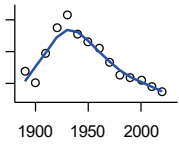
### Crime

Crime Index Offenses	69
Property Crimes	70
Violent Crimes	70

### Agriculture

Number of Farms	71
Total Acres Harvested	71
Value: Livestock and Poultry (\$000)	71
Value: Field Crops (\$000) Excluding Government Program Payments	72

**Population**



**DECENNIAL CENSUS:TOTAL POPULATION**

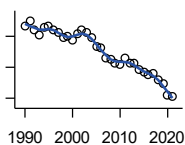
U.S. Census Bureau: Decennial Census

Year	County	State of Kansas	Non Metro Kansas	County Rank	Per 1000 or \$ Per Capita
1890	2,395	1,427,096	968,413	92	.
1900	2,032	1,470,495	981,206	87	.
1910	2,930	1,690,949	1,138,294	96	.
1920	3,734	1,769,257	1,153,525	93	.
1930	4,157	1,880,999	1,180,056	93	.
1940	3,535	1,801,028	1,097,216	94	.
1950	3,310	1,905,299	1,046,823	98	.
1960	3,115	2,178,611	1,021,510	98	.
1970	2,662	2,246,578	958,104	102	.
1980	2,269	2,363,679	980,085	103	.
1990	2,177	2,477,574	939,416	103	.
2000	2,085	2,688,418	959,507	102	.
2010	1,916	2,853,118	929,981	101	.
2020	1,723	2,937,880	892,006	101	.

County: county value. Kansas: state value. County Rank: highest county value ranked #1. (\$000): thousands of dollars. Nonmetro Kansas: Kansas total less Metropolitan Areas as defined by the Office of Management and Budget (OMB; released 3/6/2020). Per 1000: For nonmoney amounts, Per 1000=(county value / county population for the same year as the data) x 1000. \$ Per capita=(county value / county population for the same year as the data). Value= . indicates missing or suppressed data or value not calculated.

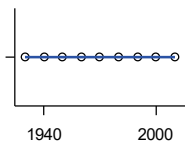
**Population**

**ESTIMATED POPULATION**



U.S. Census Bureau

Year	County	State of Kansas	Non Metro Kansas	County Rank	Per 1000 or \$ Per Capita
1990	2,169	2,481,349	938,607	103	.
1991	2,199	2,498,722	938,965	103	.
1992	2,141	2,532,394	942,759	103	.
1993	2,105	2,556,547	947,515	103	.
1994	2,157	2,580,513	952,178	102	.
1995	2,165	2,601,007	957,771	102	.
1996	2,143	2,614,554	959,455	102	.
1997	2,124	2,635,292	960,225	102	.
1998	2,095	2,660,598	960,569	102	.
1999	2,096	2,678,338	960,704	102	.
2000	2,072	2,693,681	959,230	102	.
2001	2,118	2,702,162	952,607	101	.
2002	2,139	2,713,535	945,985	101	.
2003	2,122	2,723,004	941,474	101	.
2004	2,089	2,734,373	937,623	101	.
2005	2,038	2,745,299	932,852	101	.
2006	2,027	2,762,931	928,809	101	.
2007	1,959	2,783,785	927,643	101	.
2008	1,949	2,808,076	926,248	101	.
2009	1,929	2,832,704	926,755	101	.
2010	1,920	2,858,190	930,028	101	.
2011	1,957	2,869,225	927,675	101	.
2012	1,927	2,885,257	925,152	101	.
2013	1,924	2,893,212	922,383	102	.
2014	1,883	2,900,475	917,854	102	.
2015	1,869	2,909,011	912,199	101	.
2016	1,851	2,910,844	905,099	101	.
2017	1,863	2,908,718	897,981	101	.
2018	1,822	2,911,359	892,656	101	.
2019	1,794	2,913,314	887,455	101	.
2020	1,718	2,935,880	889,750	101	.
2021	1,710	2,934,582	886,438	101	.



**URBAN POPULATION**

U.S. Census Bureau: Decennial Census

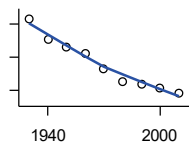
Year	County	State of Kansas	Non Metro Kansas	County Rank	Per 1000 or \$ Per Capita
1930	0	729,834	336,666	105	.
1940	0	753,941	349,228	105	.
1950	0	993,220	398,923	105	.
1960	0	1,328,741	457,447	105	.
1970	0	1,484,870	450,543	105	.
1980	0	1,575,899	474,769	105	.
1990	0	1,712,564	464,205	105	.
2000	0	1,920,081	488,011	105	.
2010	0	2,116,961	485,780	105	.

County: county value. Kansas: state value. County Rank: highest county value ranked #1. (\$000): thousands of dollars. Nonmetro Kansas: Kansas total less Metropolitan Areas as defined by the Office of Management and Budget (OMB; released 3/6/2020). Per 1000: For nonmoney amounts, Per 1000=(county value / county population for the same year as the data) x 1000. \$ Per capita=(county value / county population for the same year as the data). Value= . indicates missing or suppressed data or value not calculated.



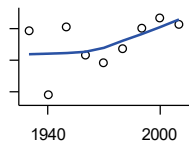
**Population**

**RURAL POPULATION**



U.S. Census Bureau

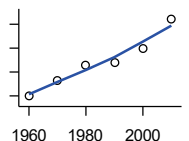
Year	County	State of Kansas	Non Metro Kansas	County Rank	Per 1000 or \$ Per Capita
1930	4,157	1,151,165	843,390	91	.
1940	3,535	1,047,087	747,988	92	.
1950	3,310	912,079	647,900	94	.
1960	3,115	849,870	564,063	92	.
1970	2,662	761,708	509,972	97	.
1980	2,269	787,780	505,873	98	.
1990	2,177	765,010	475,211	97	.
2000	2,085	768,337	471,900	98	.
2010	1,916	736,157	444,201	97	.



**NET MIGRATION: DECADE ENDING...**

calculated by the Institute for Policy and Social Research, The University of Kansas

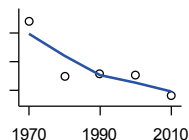
Year	County	State of Kansas	Non Metro Kansas	County Rank	Per 1000 or \$ Per Capita
1930	-234	-66,132	-101,869	34	-56.3
1940	-1,044	-192,649	-166,022	24	-295.3
1950	-185	-84,329	-158,379	28	-55.9
1960	-540	-38,999	-146,640	21	-173.4
1970	-631	-119,662	-105,116	41	-237.0
1980	-456	-21,983	-6,184	76	-201.0
1990	-201	-61,835	-79,274	19	-92.3
2000	-64	68,960	4,247	55	-30.7
2010	-145	5,578	-50,648	31	-75.7



**MEDIAN AGE**

U.S. Census Bureau: Decennial Census

Year	County	State of Kansas	Non Metro Kansas	County Rank	Per 1000 or \$ Per Capita
1960	29.9	26.9	.	70	.
1970	33.1	28.7	.	64	.
1980	36.5	30.1	.	34	.
1990	37.0	32.9	.	49	.
2000	39.8	35.2	.	49	.
2010	46.1	36.0	.	25	.



**POPULATION UNDER 18 (DECENNIAL CENSUS)**

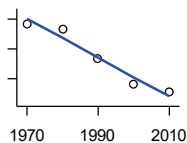
U.S. Census Bureau: Decennial Census

Year	County	State of Kansas	Non Metro Kansas	County Rank	Per 1000 or \$ Per Capita
1970	978	746,354	306,227	97	.
1980	600	649,035	263,919	104	.
1990	611	661,614	250,107	101	.
2000	604	712,993	250,757	101	.
2010	460	726,939	229,213	101	.

County: county value. Kansas: state value. County Rank: highest county value ranked #1. (\$000): thousands of dollars. Nonmetro Kansas: Kansas total less Metropolitan Areas as defined by the Office of Management and Budget (OMB; released 3/6/2020). Per 1000: For nonmoney amounts, Per 1000=(county value / county population for the same year as the data) x 1000. \$ Per capita=(county value / county population for the same year as the data). Value= . indicates missing or suppressed data or value not calculated.

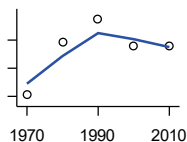
**Population**

**POPULATION AGE 18 AND OVER  
(DECENNIAL CENSUS)**



U.S. Census Bureau: Decennial Census

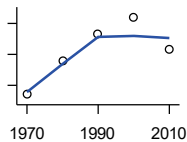
Year	County	State of Kansas	Non Metro Kansas	County Rank	Per 1000 or \$ Per Capita
1970	1,684	1,500,224	654,288	102	.
1980	1,667	1,714,282	716,684	102	.
1990	1,566	1,815,960	689,309	103	.
2000	1,481	1,975,425	709,154	103	.
2010	1,456	2,126,179	700,768	102	.



**POPULATION AGE 65 AND OVER  
(DECENNIAL CENSUS)**

U.S. Census Bureau: Decennial Census

Year	County	State of Kansas	Non Metro Kansas	County Rank	Per 1000 or \$ Per Capita
1970	361	266,201	149,049	95	.
1980	399	306,263	164,932	98	.
1990	415	342,571	168,579	100	.
2000	396	356,229	161,769	102	.
2010	396	376,116	154,214	100	.



**POPULATION AGE 85 AND OVER  
(DECENNIAL CENSUS)**

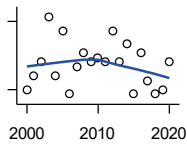
U.S. Census Bureau: Decennial Census

Year	County	State of Kansas	Non Metro Kansas	County Rank	Per 1000 or \$ Per Capita
1970	24	23,899	13,698	98	.
1980	46	33,455	18,804	96	.
1990	63	42,241	22,970	99	.
2000	74	51,770	26,644	99	.
2010	53	59,318	26,197	104	.

County: county value. Kansas: state value. County Rank: highest county value ranked #1. (\$000): thousands of dollars. Nonmetro Kansas: Kansas total less Metropolitan Areas as defined by the Office of Management and Budget (OMB; released 3/6/2020). Per 1000: For nonmoney amounts, Per 1000=(county value / county population for the same year as the data) x 1000. \$ Per capita=(county value / county population for the same year as the data). Value= . indicates missing or suppressed data or value not calculated.

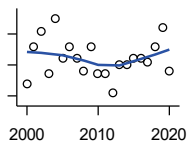
**Vital Statistics and Health**

**BIRTHS (LIVE)**



Kansas Department of Health and Environment

Year	County	State of Kansas	Non Metro Kansas	County Rank	Per 1000 or \$ Per Capita
2000	15	39,654	12,980	105	7.2
2001	18	38,832	12,527	103	8.5
2002	21	39,338	12,476	100	9.8
2003	31	39,353	12,342	93	14.6
2004	18	39,553	12,398	101	8.6
2005	28	39,701	12,382	92	13.7
2006	14	40,896	12,726	103	6.9
2007	20	41,951	12,990	101	10.2
2008	23	41,815	12,970	97	11.8
2009	21	41,388	12,949	103	10.9
2010	22	40,439	12,200	100	11.5
2011	21	39,628	12,098	100	10.7
2012	28	40,304	12,217	96	14.5
2013	21	38,805	11,877	104	10.9
2014	25	39,193	12,052	97	13.3
2015	14	39,126	11,836	104	7.5
2016	23	38,048	11,467	100	12.4
2017	17	36,464	10,968	103	9.1
2018	14	36,268	10,826	105	7.7
2019	15	35,395	10,506	102	8.4
2020	21	34,368	10,222	98	12.2



**DEATHS**

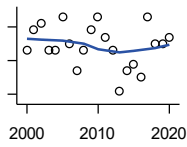
Kansas Department of Health and Environment

Year	County	State of Kansas	Non Metro Kansas	County Rank	Per 1000 or \$ Per Capita
2000	14	24,676	11,175	105	6.7
2001	26	24,590	10,807	98	12.3
2002	31	24,968	11,079	99	14.5
2003	17	24,417	10,615	105	8.0
2004	35	23,720	10,369	92	16.8
2005	22	24,632	10,599	103	10.8
2006	26	24,489	10,538	102	12.8
2007	22	24,413	10,601	101	11.2
2008	18	24,896	10,593	103	9.2
2009	26	23,997	9,938	99	13.5
2010	17	24,428	10,105	103	8.9
2011	17	25,114	10,520	103	8.7
2012	11	25,084	10,259	105	5.7
2013	20	25,347	10,249	101	10.4
2014	20	25,731	10,275	104	10.6
2015	22	26,611	10,539	103	11.8
2016	22	26,129	10,231	101	11.9
2017	21	26,725	10,452	103	11.3
2018	26	27,213	10,389	99	14.3
2019	32	27,312	10,569	91	17.8
2020	18	31,667	11,850	104	10.4

County: county value. Kansas: state value. County Rank: highest county value ranked #1. (\$000): thousands of dollars. Nonmetro Kansas: Kansas total less Metropolitan Areas as defined by the Office of Management and Budget (OMB; released 3/6/2020). Per 1000: For nonmoney amounts, Per 1000=(county value / county population for the same year as the data) x 1000. \$ Per capita=(county value / county population for the same year as the data). Value= . indicates missing or suppressed data or value not calculated.

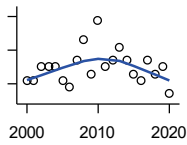
**Vital Statistics and Health**

**MARRIAGES**



Kansas Department of Health and Environment

Year	County	State of Kansas	Non Metro Kansas	County Rank	Per 1000 or \$ Per Capita
2000	9	20,426	7,333	104	4.3
2001	12	20,457	7,441	102	5.7
2002	13	19,783	6,794	103	6.1
2003	9	18,722	6,469	104	4.2
2004	9	19,174	6,756	103	4.3
2005	14	18,745	6,481	101	6.9
2006	10	18,836	6,433	102	4.9
2007	6	18,910	6,464	103	3.1
2008	9	18,717	6,283	100	4.6
2009	12	18,268	6,015	100	6.2
2010	14	18,150	5,925	91	7.3
2011	11	17,897	5,977	100	5.6
2012	9	18,154	5,752	102	4.7
2013	3	17,328	5,533	105	1.6
2014	6	17,655	5,535	103	3.2
2015	7	17,595	5,400	103	3.7
2016	5	17,948	5,340	105	2.7
2017	14	17,274	5,163	91	7.5
2018	10	16,362	4,999	97	5.5
2019	10	15,403	4,650	92	5.6
2020	11	14,038	4,066	89	6.4



**DIVORCES AND ANNULMENTS**

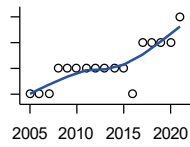
Kansas Department of Health and Environment

Year	County	State of Kansas	Non Metro Kansas	County Rank	Per 1000 or \$ Per Capita
2000	3	10,105	4,000	104	1.4
2001	3	9,885	3,818	99	1.4
2002	5	9,645	3,716	101	2.3
2003	5	8,644	3,464	98	2.4
2004	5	8,759	3,506	100	2.4
2005	3	8,476	3,311	104	1.5
2006	2	9,145	3,387	104	1.0
2007	6	9,347	3,402	95	3.1
2008	9	9,818	3,655	87	4.6
2009	4	10,333	3,463	100	2.1
2010	12	10,579	3,530	82	6.3
2011	5	10,445	3,347	98	2.6
2012	6	9,782	3,040	97	3.1
2013	8	9,085	2,973	87	4.2
2014	6	8,441	2,682	92	3.2
2015	4	8,036	2,704	102	2.1
2016	3	7,198	2,424	100	1.6
2017	6	6,494	2,315	92	3.2
2018	4	6,538	2,269	98	2.2
2019	5	6,398	2,357	94	2.8
2020	1	5,169	1,866	103	0.6

County: county value. Kansas: state value. County Rank: highest county value ranked #1. (\$000): thousands of dollars. Nonmetro Kansas: Kansas total less Metropolitan Areas as defined by the Office of Management and Budget (OMB; released 3/6/2020). Per 1000: For nonmoney amounts, Per 1000=(county value / county population for the same year as the data) x 1000. \$ Per capita=(county value / county population for the same year as the data). Value= . indicates missing or suppressed data or value not calculated.

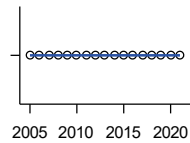
**Vital Statistics and Health**

**PHYSICIANS: M.D. PHYSICIANS**



Kansas Department of Health and Environment (1981-2005,2010-);Kansas Health Policy Authority (2006-2009)

Year	County	State of Kansas	Non Metro Kansas	County Rank	Per 1000 or \$ Per Capita
2005	0	4,241	912	105	0.0
2006	0	4,310	953	105	0.0
2007	0	5,309	1,046	105	0.0
2008	1	5,110	1,016	101	0.5
2009	1	5,249	996	98	0.5
2010	1	5,192	979	98	0.5
2011	1	5,243	983	96	0.5
2012	1	5,693	1,033	96	0.5
2013	1	6,106	1,071	100	0.5
2014	1	5,839	951	97	0.5
2015	1	5,703	855	96	0.5
2016	0	4,278	643	105	0.0
2017	2	6,332	1,047	81	1.1
2018	2	6,079	1,065	87	1.1
2019	2	6,435	1,036	86	1.1
2020	2	6,668	1,045	87	1.2
2021	3	6,745	1,042	72	1.8



**PHYSICIANS: D.O. PHYSICIANS**

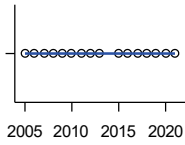
Kansas Department of Health and Environment (1981-2005,2010-);Kansas Health Policy Authority (2006-2009)

Year	County	State of Kansas	Non Metro Kansas	County Rank	Per 1000 or \$ Per Capita
2005	0	553	174	105	0.0
2006	0	508	171	105	0.0
2007	0	569	169	105	0.0
2008	0	558	166	105	0.0
2009	0	564	160	105	0.0
2010	0	583	169	105	0.0
2011	0	502	152	105	0.0
2012	0	718	200	105	0.0
2013	0	829	210	105	0.0
2014	0	817	189	105	0.0
2015	0	819	190	105	0.0
2016	0	632	136	105	0.0
2017	0	579	129	105	0.0
2018	0	871	164	105	0.0
2019	0	951	212	105	0.0
2020	0	1,018	204	105	0.0
2021	0	1,095	217	105	0.0

County: county value. Kansas: state value. County Rank: highest county value ranked #1. (\$000): thousands of dollars. Nonmetro Kansas: Kansas total less Metropolitan Areas as defined by the Office of Management and Budget (OMB; released 3/6/2020). Per 1000: For nonmoney amounts, Per 1000=(county value / county population for the same year as the data) x 1000. \$ Per capita=(county value / county population for the same year as the data). Value= . indicates missing or suppressed data or value not calculated.

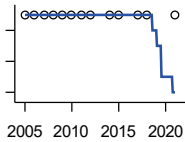
**Vital Statistics and Health**

**DENTISTS**



Kansas Department of Health and Environment (1981-2006,2010-); Kansas Health Policy Authority (2007-2009)

Year	County	State of Kansas	Non Metro Kansas	County Rank	Per 1000 or \$ Per Capita
2005	0	1,347	363	105	0.0
2006	0	1,381	361	105	0.0
2007	0	1,335	350	105	0.0
2008	0	1,392	353	105	0.0
2009	0	1,353	350	105	0.0
2010	0	1,401	365	105	0.0
2011	0	1,338	346	105	0.0
2012	0	1,434	392	105	0.0
2013	0	1,212	328	105	0.0
2015	0	1,240	327	105	0.0
2016	0	1,456	350	105	0.0
2017	0	1,467	350	105	0.0
2018	0	1,604	359	105	0.0
2019	0	1,646	355	105	0.0
2020	0	1,646	355	105	0.0
2021	0	1,688	362	105	0.0



**NUMBER OF HOSPITALS**

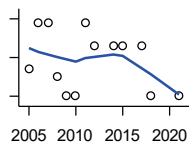
American Hospital Association, American Hospital Association Guide to the Health Care Field

Year	County	State of Kansas	Non Metro Kansas	County Rank	Per 1000 or \$ Per Capita
2005	1	158	105	96	.
2006	1	158	105	96	.
2007	1	159	104	95	.
2008	1	159	104	95	.
2009	1	158	105	96	.
2010	1	158	104	96	.
2011	1	158	103	96	.
2012	1	157	103	96	.
2014	1	156	.	96	.
2015	1	155	103	96	.
2017	1	157	102	96	.
2018	1	154	99	95	.
2021	1	151	.	95	.

County: county value. Kansas: state value. County Rank: highest county value ranked #1. (\$000): thousands of dollars. Nonmetro Kansas: Kansas total less Metropolitan Areas as defined by the Office of Management and Budget (OMB; released 3/6/2020). Per 1000: For nonmoney amounts, Per 1000=(county value / county population for the same year as the data) x 1000. \$ Per capita=(county value / county population for the same year as the data). Value= . indicates missing or suppressed data or value not calculated.

**Vital Statistics and Health**

**NUMBER OF HOSPITAL BEDS**

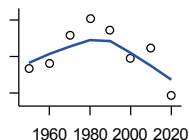


Kansas Department of Health and Environment

Year	County	State of Kansas	Non Metro Kansas	County Rank	Per 1000 or \$ Per Capita
2005	32	12,389	5,687	70	15.7
2006	44	11,992	5,514	66	21.7
2007	44	12,171	5,637	65	22.5
2008	30	12,332	5,700	69	15.4
2009	25	12,283	5,652	86	13.0
2010	25	12,218	5,521	86	13.0
2011	44	12,182	5,335	60	22.5
2012	38	12,002	5,355	63	19.7
2014	38	12,034	.	62	20.2
2015	38	11,926	5,330	64	20.3
2017	38	11,491	4,825	60	20.4
2018	25	11,448	4,583	82	13.7
2021	25	11,199	.	76	14.6

**Housing**

**HOUSING UNITS (DECENNIAL)**



U.S. Census Bureau: Decennial Census

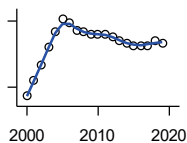
Year	County	State of Kansas	Non Metro Kansas	County Rank	Per 1000 or \$ Per Capita
1950	918	586,650	328,210	98	277.3
1960	930	672,899	329,380	99	298.6
1970	1,007	789,735	363,824	102	378.3
1980	1,054	955,207	416,877	102	464.5
1990	1,022	1,044,112	417,062	102	469.5
2000	945	1,131,395	422,218	103	453.2
2010	973	1,233,215	424,050	103	507.8
2020	842	1,275,689	413,120	103	488.7

County: county value. Kansas: state value. County Rank: highest county value ranked #1. (\$000): thousands of dollars. Nonmetro Kansas: Kansas total less Metropolitan Areas as defined by the Office of Management and Budget (OMB; released 3/6/2020). Per 1000: For nonmoney amounts, Per 1000=(county value / county population for the same year as the data) x 1000. \$ Per capita=(county value / county population for the same year as the data). Value= . indicates missing or suppressed data or value not calculated.

**Housing**

**HOUSING UNITS (ESTIMATED)**

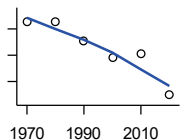
Year	County	State of Kansas	Non Metro Kansas	County Rank	Per 1000 or \$ Per Capita
2000	946	1,134,529	422,560	103	453.7
2001	953	1,146,858	423,876	103	450.0
2002	960	1,160,129	425,089	103	448.8
2003	968	1,171,620	425,936	103	456.2
2004	975	1,184,702	426,593	103	466.7
2005	981	1,195,791	426,964	103	481.4
2006	979	1,206,692	426,713	103	483.0
2007	976	1,217,608	426,090	103	498.2
2008	975	1,225,625	425,768	103	500.3
2009	974	1,230,552	424,776	103	504.9
2010	974	1,234,456	424,174	103	508.4
2011	974	1,238,052	424,549	103	497.7
2012	973	1,241,992	425,116	103	504.9
2013	971	1,246,675	425,699	103	504.7
2014	970	1,253,284	426,269	103	515.1
2015	969	1,258,999	426,844	103	518.5
2016	969	1,265,684	427,465	103	523.5
2017	969	1,273,536	427,746	103	520.1
2018	971	1,280,649	428,099	103	532.9
2019	970	1,288,401	428,495	103	540.7



U.S. Census Bureau

**OCCUPIED HOUSING UNITS**

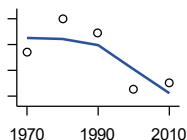
Year	County	State of Kansas	Non Metro Kansas	County Rank	Per 1000 or \$ Per Capita
1970	864	727,364	326,494	102	324.6
1980	863	872,239	371,693	102	380.3
1990	826	944,726	365,901	103	379.4
2000	796	1,037,891	375,313	103	381.8
2010	803	1,112,096	370,269	102	419.1
2020	724	1,151,360	356,330	103	420.2



U.S. Census Bureau: Decennial Census

**OWNER OCCUPIED HOUSING UNITS**

Year	County	State of Kansas	Non Metro Kansas	County Rank	Per 1000 or \$ Per Capita
1970	654	502,585	236,338	100	245.7
1980	680	612,433	277,096	102	299.7
1990	669	641,762	263,099	102	307.3
2000	625	718,703	271,350	102	299.8
2010	630	753,532	261,763	101	328.8



U.S. Census Bureau: Decennial Census

County: county value. Kansas: state value. County Rank: highest county value ranked #1. (\$000): thousands of dollars. Nonmetro Kansas: Kansas total less Metropolitan Areas as defined by the Office of Management and Budget (OMB; released 3/6/2020). Per 1000: For nonmoney amounts, Per 1000=(county value / county population for the same year as the data) x 1000. \$ Per capita=(county value / county population for the same year as the data). Value= . indicates missing or suppressed data or value not calculated.

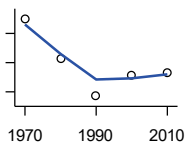


**Housing**

**RENTER OCCUPIED HOUSING UNITS**

Year	County	State of Kansas	Non Metro Kansas	County Rank	Per 1000 or \$ Per Capita
1970	210	224,779	90,156	103	78.9
1980	183	259,806	94,597	103	80.7
1990	157	302,964	102,802	105	72.1
2000	171	319,188	103,963	103	82.0
2010	173	358,564	108,506	103	90.3

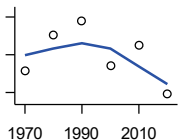
U.S. Census Bureau: Decennial Census



**VACANT HOUSING UNITS**

Year	County	State of Kansas	Non Metro Kansas	County Rank	Per 1000 or \$ Per Capita
1970	143	60,058	35,954	95	53.7
1980	181	77,912	41,584	98	79.8
1990	196	99,386	51,161	98	90.0
2000	149	93,309	46,904	99	71.5
2010	170	121,119	53,781	98	88.7
2020	118	124,329	56,790	104	68.5

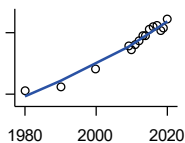
U.S. Census Bureau: Decennial Census



**MEDIAN VALUE (\$): OWNER OCCUPIED HOUSING UNITS**

Year	County	State of Kansas	Non Metro Kansas	County Rank	Per 1000 or \$ Per Capita
1980	23,200	37,800	.	83	.
1990	26,800	52,200	.	84	.
2000	45,000	83,500	.	72	.
2009	66,700	118,500	.	62	.
2010	63,700	122,600	.	77	.
2011	68,500	125,500	.	71	.
2012	72,400	127,400	.	64	.
2013	76,500	128,400	.	60	.
2014	77,600	129,400	.	64	.
2015	82,900	132,000	.	58	.
2016	85,900	135,300	.	54	.
2017	86,700	139,200	.	57	.
2018	81,700	145,400	.	70	.
2019	84,800	151,900	.	70	.
2020	93,400	157,600	.	60	.

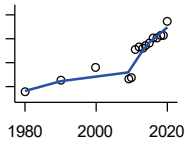
U.S. Census Bureau, Decennial Census (- 2000), (2009 -) American Community Survey five-year average ending in year shown.



County: county value. Kansas: state value. County Rank: highest county value ranked #1. (\$000): thousands of dollars. Nonmetro Kansas: Kansas total less Metropolitan Areas as defined by the Office of Management and Budget (OMB; released 3/6/2020). Per 1000: For nonmoney amounts, Per 1000=(county value / county population for the same year as the data) x 1000. \$ Per capita=(county value / county population for the same year as the data). Value= . indicates missing or suppressed data or value not calculated.

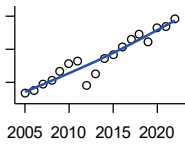
**Housing**

**MEDIAN CONTRACT RENT (\$)**



U.S. Census Bureau, Decennial Census (- 2000), (2009 -) American Community Survey five-year average ending in year shown.

Year	County	State of Kansas	Non Metro Kansas	County Rank	Per 1000 or \$ Per Capita
1980	153	219	.	74	.
1990	252	372	.	72	.
2000	360	498	.	66	.
2009	262	491	.	92	.
2010	280	507	.	88	.
2011	506	699	.	71	.
2012	527	715	.	68	.
2013	526	732	.	76	.
2014	543	748	.	75	.
2015	567	757	.	69	.
2016	608	775	.	53	.
2017	610	801	.	63	.
2018	626	831	.	61	.
2019	626	850	.	69	.
2020	750	863	.	21	.



**FAIR MARKET RENT: 2 BEDROOMS**

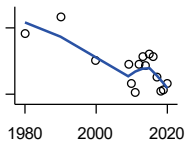
U.S. Department of Housing and Urban Development (HUD)

Year	County	State of Kansas	Non Metro Kansas	County Rank	Per 1000 or \$ Per Capita
2005	516	.	.	39	.
2006	527	.	.	41	.
2007	543	.	.	40	.
2008	558	628	.	41	.
2009	582	653	.	41	.
2010	606	678	.	43	.
2011	616	684	.	43	.
2012	540	660	.	105	.
2013	577	712	.	105	.
2014	622	746	.	105	.
2015	634	756	.	105	.
2016	658	781	.	105	.
2017	681	811	.	105	.
2018	697	815	.	105	.
2019	672	828	.	105	.
2020	714	855	.	105	.
2021	718	874	.	105	.
2022	742	879	.	105	.

County: county value. Kansas: state value. County Rank: highest county value ranked #1. (\$000): thousands of dollars. Nonmetro Kansas: Kansas total less Metropolitan Areas as defined by the Office of Management and Budget (OMB; released 3/6/2020). Per 1000: For nonmoney amounts, Per 1000=(county value / county population for the same year as the data) x 1000. \$ Per capita=(county value / county population for the same year as the data). Value= . indicates missing or suppressed data or value not calculated.

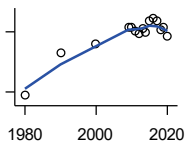
**Education**

**POPULATION AGE 25+**



U.S. Census Bureau, Decennial Census (- 2000), (2009 -) American Community Survey five-year average ending in year shown.

Year	County	State of Kansas	Non Metro Kansas	County Rank	Per 1000 or \$ Per Capita
1980	1,438	1,388,102	596,639	.	.
1990	1,475	1,565,936	608,745	.	.
2000	1,376	1,701,207	618,131	.	.
2009	1,369	1,775,427	600,188	.	.
2010	1,325	1,802,904	608,716	.	.
2011	1,305	1,822,400	610,386	.	.
2012	1,369	1,838,079	611,103	.	.
2013	1,386	1,850,010	610,374	.	.
2014	1,365	1,861,894	609,612	.	.
2015	1,391	1,869,698	606,967	.	.
2016	1,384	1,878,495	604,563	.	.
2017	1,338	1,886,741	601,076	.	.
2018	1,307	1,894,675	598,487	.	.
2019	1,310	1,902,279	595,501	.	.
2020	1,324	1,911,990	593,923	.	.



**PERCENT HS GRADUATE OR HIGHER AGE 25+**

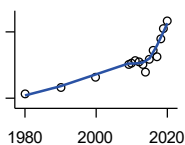
U.S. Census Bureau, Decennial Census (- 2000), (2009 -) American Community Survey five-year average ending in year shown.

Year	County	State of Kansas	Non Metro Kansas	County Rank	Per 1000 or \$ Per Capita
1980	74.1	73.3	.	16	.
1990	84.9	81.3	.	5	.
2000	86.9	86.0	.	25	.
2009	91.1	89.0	.	24	.
2010	91.1	89.2	.	26	.
2011	90.1	89.5	.	43	.
2012	89.6	89.7	.	55	.
2013	90.9	89.8	.	38	.
2014	89.8	90.0	.	57	.
2015	92.6	90.2	.	27	.
2016	93.4	90.3	.	22	.
2017	92.6	90.5	.	32	.
2018	90.6	90.7	.	64	.
2019	91.1	91.0	.	61	.
2020	89.0	91.4	.	81	.

County: county value. Kansas: state value. County Rank: highest county value ranked #1. (\$000): thousands of dollars. Nonmetro Kansas: Kansas total less Metropolitan Areas as defined by the Office of Management and Budget (OMB; released 3/6/2020). Per 1000: For nonmoney amounts, Per 1000=(county value / county population for the same year as the data) x 1000. \$ Per capita=(county value / county population for the same year as the data). Value= . indicates missing or suppressed data or value not calculated.

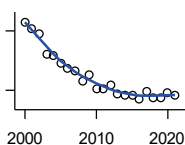
**Education**

**PERCENT BACHELORS DEGREE OR HIGHER AGE 25+**



U.S. Census Bureau, Decennial Census (- 2000), (2009 -) American Community Survey five-year average ending in year shown.

Year	County	State of Kansas	Non Metro Kansas	County Rank	Per 1000 or \$ Per Capita
1980	15.9	17.0	.	14	.
1990	17.3	21.1	.	18	.
2000	19.7	25.8	.	22	.
2009	22.6	28.8	.	18	.
2010	22.9	29.3	.	19	.
2011	23.6	29.7	.	16	.
2012	23.1	30.0	.	24	.
2013	22.6	30.3	.	29	.
2014	21.0	30.7	.	47	.
2015	23.7	31.0	.	29	.
2016	25.7	31.6	.	22	.
2017	24.4	32.3	.	29	.
2018	28.4	32.9	.	16	.
2019	30.8	33.4	.	11	.
2020	32.5	33.9	.	7	.



**PUBLIC SCHOOL ENROLLMENT (FTE) SCHOOL YEAR BEGINNING...**

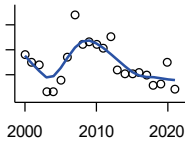
Kansas State Department of Education

Year	County	State of Kansas	Non Metro Kansas	County Rank	Per 1000 or \$ Per Capita
2000	471.5	448,150.8	166,722.5	96	226.1
2001	454.9	447,047.1	164,365.0	98	214.8
2002	443.5	444,860.3	161,555.4	96	207.3
2003	391.0	443,620.6	159,130.2	98	184.3
2004	388.5	441,957.2	156,566.3	97	186.0
2005	369.0	442,708.4	155,197.2	98	181.1
2006	356.5	444,878.7	153,842.3	98	175.9
2007	348.0	446,831.3	152,337.1	98	177.6
2008	324.0	447,730.0	150,572.7	100	166.2
2009	339.0	453,202.5	151,246.8	97	175.7
2010	305.0	455,405.0	151,023.8	101	159.2
2011	302.0	456,000.5	150,257.9	101	154.3
2012	313.5	458,496.4	150,463.0	99	162.7
2013	291.0	461,950.0	150,420.9	101	151.2
2014	287.5	464,395.4	150,499.4	101	152.7
2015	286.5	463,504.0	149,539.3	100	153.3
2016	276.5	459,920.3	147,293.5	103	149.4
2017	296.5	477,977.9	152,096.3	102	159.2
2018	280.5	476,481.7	150,456.8	104	154.0
2019	282.0	476,525.1	150,045.2	103	157.2
2020	293.5	462,088.0	146,369.6	101	170.3
2021	287.0	463,652.4	147,500.4	102	167.8

County: county value. Kansas: state value. County Rank: highest county value ranked #1. (\$000): thousands of dollars. Nonmetro Kansas: Kansas total less Metropolitan Areas as defined by the Office of Management and Budget (OMB; released 3/6/2020). Per 1000: For nonmoney amounts, Per 1000=(county value / county population for the same year as the data) x 1000. \$ Per capita=(county value / county population for the same year as the data). Value= . indicates missing or suppressed data or value not calculated.

**Education**

**PUPIL/TEACHER RATIO SCHOOL YEAR BEGINNING...**

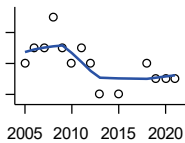


Kansas State Department of Education

Year	County	State of Kansas	Non Metro Kansas	County Rank	Per 1000 or \$ Per Capita
2000	11.8	15.4	13.9	78	.
2001	11.5	15.3	13.8	85	.
2002	11.4	15.4	13.9	89	.
2003	10.3	15.5	13.8	98	.
2004	10.3	15.3	13.6	99	.
2005	10.8	15.0	13.4	93	.
2006	11.7	14.7	13.2	65	.
2007	13.4	14.6	13.1	34	.
2008	12.2	14.4	12.9	49	.
2009	12.3	14.8	13.2	54	.
2010	12.2	15.2	13.6	65	.
2011	12.1	15.1	13.5	63	.
2012	12.5	15.1	13.5	57	.
2013	11.2	15.1	13.5	82	.
2014	11.1	15.0	13.6	87	.
2015	11.0	15.2	13.9	84	.
2016	11.1	15.1	13.7	85	.
2017	11.0	15.5	13.9	90	.
2018	10.6	15.3	13.8	94	.
2019	10.6	15.2	13.7	87	.
2020	11.5	14.7	13.4	67	.
2021	10.4	14.8	13.5	91	.

**Social Environment**

**CHILD CARE FACILITIES: TOTAL CHILD CARE FACILITIES**



Kansas Department of Health and Environment, Bureau of Adult and Child Care

Year	County	State of Kansas	Non Metro Kansas	County Rank	Per 1000 or \$ Per Capita
2005	6	8,258	3,378	102	2.9
2006	7	8,442	3,429	100	3.5
2007	7	8,241	3,317	99	3.6
2008	9	8,011	3,150	92	4.6
2009	7	7,853	3,066	95	3.6
2010	6	7,354	2,858	98	3.1
2011	7	6,835	2,623	92	3.6
2012	6	6,346	2,409	94	3.1
2013	4	5,754	2,179	100	2.1
2015	4	5,289	2,146	99	2.1
2018	6	4,607	1,904	90	3.3
2019	5	4,287	1,774	92	2.8
2020	5	4,274	1,798	93	2.9
2021	5	4,002	1,700	91	2.9

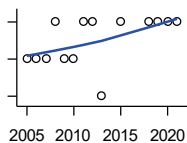
County: county value. Kansas: state value. County Rank: highest county value ranked #1. (\$000): thousands of dollars. Nonmetro Kansas: Kansas total less Metropolitan Areas as defined by the Office of Management and Budget (OMB; released 3/6/2020). Per 1000: For nonmoney amounts, Per 1000=(county value / county population for the same year as the data) x 1000. \$ Per capita=(county value / county population for the same year as the data). Value= . indicates missing or suppressed data or value not calculated.

**Social Environment**

**CHILD CARE FACILITIES:  
PRESCHOOLS**

Kansas Department of Health and Environment, Bureau of Adult and Child Care

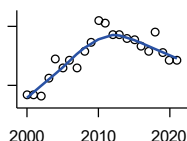
Year	County	State of Kansas	Non Metro Kansas	County Rank	Per 1000 or \$ Per Capita
2005	1	243	140	79	0.5
2006	1	221	127	76	0.5
2007	1	208	119	76	0.5
2008	2	204	114	46	1.0
2009	1	194	107	72	0.5
2010	1	194	112	73	0.5
2011	2	209	123	47	1.0
2012	2	201	121	47	1.0
2013	0	140	84	105	0.0
2015	2	185	113	42	1.1
2018	2	150	94	41	1.1
2019	2	134	83	35	1.1
2020	2	126	78	34	1.2
2021	2	120	74	29	1.2



**FOOD STAMP BENEFICIARIES**

Kansas Social and Rehabilitation Services

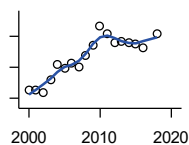
Year	County	State of Kansas	Non Metro Kansas	County Rank	Per 1000 or \$ Per Capita
2000	31	110,619	44,825	104	14.9
2001	31	117,241	46,741	105	14.6
2002	29	131,726	52,342	105	13.6
2003	47	155,908	61,280	104	22.1
2004	67	167,971	65,852	102	32.1
2005	58	175,710	67,261	104	28.5
2006	66	182,821	67,487	102	32.6
2007	58	184,035	66,979	103	29.6
2008	74	187,377	67,160	99	38.0
2009	84	208,007	73,637	98	43.5
2010	106	259,609	90,919	98	55.3
2011	103	296,542	101,155	99	52.6
2012	91	303,257	102,478	102	47.2
2013	92	316,424	105,345	102	47.8
2014	88	301,377	100,761	102	46.7
2015	86	277,614	93,353	102	46.0
2016	80	258,412	88,343	101	43.2
2017	74	239,592	82,070	101	39.7
2018	94	219,738	75,208	98	51.6
2019	73	205,261	69,899	100	40.7
2020	65	198,457	66,721	101	37.7
2021	66	203,424	68,883	102	38.6



County: county value. Kansas: state value. County Rank: highest county value ranked #1. (\$000): thousands of dollars. Nonmetro Kansas: Kansas total less Metropolitan Areas as defined by the Office of Management and Budget (OMB; released 3/6/2020). Per 1000: For nonmoney amounts, Per 1000=(county value / county population for the same year as the data) x 1000. \$ Per capita=(county value / county population for the same year as the data). Value= . indicates missing or suppressed data or value not calculated.

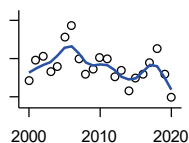
**Social Environment**

**PERCENT OF POPULATION RECEIVING FOOD STAMPS**



U.S. Dept. of Agriculture Food and Nutrition Service (1990-1997); Kansas Social and Rehabilitation Services (1998- )

Year	County	State of Kansas	Non Metro Kansas	County Rank	Per 1000 or \$ Per Capita
2000	1.5	4.1	.	100	.
2001	1.5	4.3	.	103	.
2002	1.4	4.9	.	104	.
2003	2.2	5.7	.	103	.
2004	3.2	6.2	.	92	.
2005	2.9	6.4	.	100	.
2006	3.3	6.6	.	95	.
2007	3.0	6.6	.	100	.
2008	3.8	6.7	.	84	.
2009	4.4	7.4	.	74	.
2010	5.7	9.1	.	82	.
2011	5.2	10.3	.	90	.
2012	4.6	10.5	.	96	.
2013	4.7	10.9	.	94	.
2014	4.6	10.4	.	96	.
2015	4.5	9.6	.	98	.
2016	4.3	8.9	.	95	.
2018	5.2	7.5	.	67	.



**ESTIMATED NUMBER OF PEOPLE IN POVERTY**

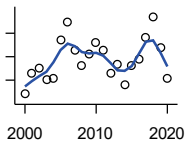
U.S. Census Bureau, Small Area Income and Poverty Estimates

Year	County	State of Kansas	Non Metro Kansas	County Rank	Per 1000 or \$ Per Capita
2000	177	235,087	98,984	104	84.9
2001	198	252,134	106,257	103	93.5
2002	202	265,673	107,542	102	94.4
2003	186	278,163	107,323	102	87.7
2004	191	297,733	111,534	101	91.4
2005	222	310,667	118,768	102	108.9
2006	234	327,102	123,700	101	115.4
2007	200	301,828	111,953	102	102.1
2008	183	307,804	113,015	102	93.9
2009	189	359,692	123,394	102	98.0
2010	201	374,677	131,502	101	104.9
2011	200	383,859	134,912	101	102.2
2012	181	392,095	133,800	102	93.9
2013	188	391,718	134,067	103	97.7
2014	166	381,506	130,213	104	88.2
2015	179	366,069	123,073	103	95.8
2016	183	343,773	121,314	102	98.9
2017	196	335,371	116,854	101	105.2
2018	210	336,892	114,490	101	115.3
2019	184	319,931	110,692	102	102.6
2020	159	300,931	100,998	103	92.3

County: county value. Kansas: state value. County Rank: highest county value ranked #1. (\$000): thousands of dollars. Nonmetro Kansas: Kansas total less Metropolitan Areas as defined by the Office of Management and Budget (OMB; released 3/6/2020). Per 1000: For nonmoney amounts, Per 1000=(county value / county population for the same year as the data) x 1000. \$ Per capita=(county value / county population for the same year as the data). Value= . indicates missing or suppressed data or value not calculated.

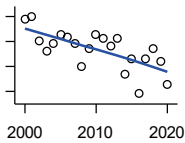
**Social Environment**

**ESTIMATED % OF PEOPLE IN POVERTY**



U.S. Census Bureau, Small Area Income and Poverty Estimates

Year	County	State of Kansas	Non Metro Kansas	County Rank	Per 1000 or \$ Per Capita
2000	8.4	8.9	.	90	.
2001	9.3	9.5	.	89	.
2002	9.5	10.0	.	87	.
2003	9.0	10.4	.	93	.
2004	9.1	11.1	.	92	.
2005	10.7	11.7	.	79	.
2006	11.5	12.2	.	73	.
2007	10.3	11.2	.	77	.
2008	9.6	11.3	.	87	.
2009	10.1	13.2	.	91	.
2010	10.6	13.5	.	82	.
2011	10.3	13.8	.	93	.
2012	9.3	14.0	.	100	.
2013	9.7	13.9	.	96	.
2014	8.8	13.5	.	102	.
2015	9.6	12.9	.	92	.
2016	9.9	12.2	.	93	.
2017	10.8	11.9	.	80	.
2018	11.7	11.9	.	61	.
2019	10.4	11.3	.	79	.
2020	9.1	10.6	.	92	.



**EST. NUMBER OF RELATED CHILDREN AGE 5 TO 17 IN FAMILIES IN POVERTY**

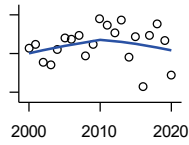
U.S. Census Bureau, Small Area Income and Poverty Estimates

Year	County	State of Kansas	Non Metro Kansas	County Rank	Per 1000 or \$ Per Capita
2000	49	50,388	21,854	102	23.5
2001	50	53,755	23,094	102	23.6
2002	40	52,453	21,423	102	18.7
2003	36	55,419	21,809	102	17.0
2004	39	59,392	22,313	102	18.7
2005	43	60,203	24,244	102	21.1
2006	42	64,427	25,326	102	20.7
2007	39	61,149	23,639	102	19.9
2008	30	59,842	22,661	103	15.4
2009	37	71,850	26,251	102	19.2
2010	43	81,077	29,804	101	22.4
2011	41	82,311	29,306	102	21.0
2012	38	87,594	29,781	102	19.7
2013	41	84,325	29,253	103	21.3
2014	27	83,873	29,354	105	14.3
2015	33	78,192	27,482	105	17.7
2016	19	67,810	25,074	105	10.3
2017	33	67,873	25,032	105	17.7
2018	37	68,153	24,928	104	20.3
2019	32	64,613	23,117	105	17.8
2020	23	59,792	21,143	105	13.3

County: county value. Kansas: state value. County Rank: highest county value ranked #1. (\$000): thousands of dollars. Nonmetro Kansas: Kansas total less Metropolitan Areas as defined by the Office of Management and Budget (OMB; released 3/6/2020). Per 1000: For nonmoney amounts, Per 1000=(county value / county population for the same year as the data) x 1000. \$ Per capita=(county value / county population for the same year as the data). Value= . indicates missing or suppressed data or value not calculated.



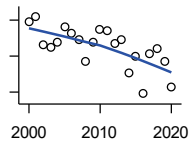
**Social Environment**



EST. % OF RELATED CHILDREN AGE 5 TO 17 IN FAMILIES IN POVERTY

U.S. Census Bureau, Small Area Income and Poverty Estimates

Year	County	State of Kansas	Non Metro Kansas	County Rank	Per 1000 or \$ Per Capita
2000	10.5	10.0	.	77	.
2001	11.0	10.8	.	77	.
2002	9.1	10.5	.	90	.
2003	8.8	11.3	.	98	.
2004	10.4	12.5	.	85	.
2005	11.6	12.8	.	79	.
2006	11.5	13.2	.	87	.
2007	11.9	12.6	.	78	.
2008	9.7	12.3	.	95	.
2009	10.9	14.7	.	96	.
2010	13.6	15.9	.	81	.
2011	12.9	16.2	.	86	.
2012	12.2	17.2	.	93	.
2013	13.4	16.5	.	81	.
2014	9.6	16.4	.	103	.
2015	11.8	15.3	.	90	.
2016	6.6	13.2	.	104	.
2017	11.9	13.4	.	89	.
2018	13.1	13.5	.	82	.
2019	11.3	12.9	.	86	.
2020	7.8	11.9	.	99	.



ESTIMATED NUMBER UNDER 18 IN POVERTY

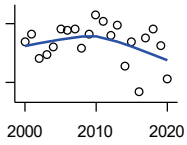
U.S. Census Bureau, Small Area Income and Poverty Estimates

Year	County	State of Kansas	Non Metro Kansas	County Rank	Per 1000 or \$ Per Capita
2000	69	82,619	34,843	102	33.1
2001	72	87,487	36,724	102	34.0
2002	56	84,181	32,870	103	26.2
2003	55	93,896	36,004	102	25.9
2004	58	98,641	36,272	102	27.8
2005	66	100,254	39,118	102	32.4
2006	63	105,193	41,054	102	31.1
2007	59	100,242	37,881	102	30.1
2008	47	100,146	37,552	104	24.1
2009	58	118,187	42,682	103	30.1
2010	65	129,009	46,428	101	33.9
2011	64	133,478	46,832	102	32.7
2012	57	135,261	46,294	103	29.6
2013	59	131,251	44,952	103	30.7
2014	41	125,562	43,933	105	21.8
2015	50	119,994	41,828	105	26.8
2016	29	100,996	37,387	105	15.7
2017	51	102,858	37,955	104	27.4
2018	54	102,616	36,991	104	29.6
2019	47	97,920	34,797	105	26.2
2020	33	88,491	30,767	105	19.2

County: county value. Kansas: state value. County Rank: highest county value ranked #1. (\$000): thousands of dollars. Nonmetro Kansas: Kansas total less Metropolitan Areas as defined by the Office of Management and Budget (OMB; released 3/6/2020). Per 1000: For nonmoney amounts, Per 1000=(county value / county population for the same year as the data) x 1000. \$ Per capita=(county value / county population for the same year as the data). Value= . indicates missing or suppressed data or value not calculated.

**Social Environment**

**ESTIMATED PERCENT UNDER 18 IN POVERTY**

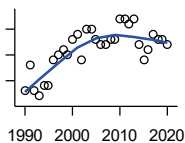


U.S. Census Bureau, Small Area Income and Poverty Estimates

Year	County	State of Kansas	Non Metro Kansas	County Rank	Per 1000 or \$ Per Capita
2000	12.1	11.9	.	77	.
2001	12.9	12.7	.	78	.
2002	10.4	12.1	.	90	.
2003	10.9	13.8	.	96	.
2004	11.6	14.6	.	92	.
2005	13.4	15.2	.	84	.
2006	13.3	15.4	.	84	.
2007	13.4	14.7	.	82	.
2008	11.5	14.6	.	95	.
2009	12.9	17.1	.	93	.
2010	14.9	18.1	.	84	.
2011	14.3	18.8	.	91	.
2012	12.8	19.0	.	102	.
2013	13.8	18.4	.	89	.
2014	9.6	17.6	.	104	.
2015	12.2	16.9	.	97	.
2016	7.0	14.3	.	104	.
2017	12.6	14.7	.	90	.
2018	13.4	14.8	.	87	.
2019	11.7	14.3	.	91	.
2020	8.3	13.0	.	101	.

County: county value. Kansas: state value. County Rank: highest county value ranked #1. (\$000): thousands of dollars. Nonmetro Kansas: Kansas total less Metropolitan Areas as defined by the Office of Management and Budget (OMB; released 3/6/2020). Per 1000: For nonmoney amounts, Per 1000=(county value / county population for the same year as the data) x 1000. \$ Per capita=(county value / county population for the same year as the data). Value= . indicates missing or suppressed data or value not calculated.

**Business**



**ESTABLISHMENTS TOTAL COUNTY BUSINESS PATTERNS**

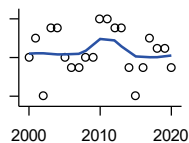
U.S. Census Bureau, County Business Patterns. Beginning with the 2017 data, any tabulation with fewer than 3 establishments were omitted from the release. Data for these establishments are included in the broader total.

Year	County	State of Kansas	Non Metro Kansas	County Rank	Per 1000 or \$ Per Capita
1990	38	65,858	26,802	105	17.5
1991	43	65,941	26,750	105	19.6
1992	38	67,630	27,229	105	17.7
1993	37	68,930	27,655	105	17.6
1994	39	69,822	27,763	105	18.1
1995	39	70,894	28,111	105	18.0
1996	44	72,017	28,353	105	20.5
1997	45	73,924	28,884	105	21.2
1998	46	74,019	28,749	105	22.0
1999	45	74,486	28,536	105	21.5
2000	48	74,939	28,475	105	23.0
2001	49	74,565	28,282	105	23.1
2002	44	75,077	28,183	105	20.6
2003	50	74,972	27,998	105	23.6
2004	50	75,827	28,009	105	23.9
2005	48	76,173	27,830	105	23.6
2006	47	76,446	27,653	105	23.2
2007	47	77,157	27,736	105	24.0
2008	48	76,096	27,314	104	24.6
2009	48	74,698	26,839	104	24.9
2010	52	74,301	26,739	104	27.1
2011	52	73,598	26,555	104	26.6
2012	51	73,944	26,534	104	26.5
2013	52	73,816	26,393	104	27.0
2014	47	74,055	26,292	104	25.0
2015	44	74,526	26,355	104	23.5
2016	46	74,884	26,172	104	24.9
2017	49	74,947	26,093	104	26.3
2018	48	74,559	25,802	104	26.3
2019	48	74,292	25,536	104	26.8
2020	47	73,982	25,178	104	27.3

County: county value. Kansas: state value. County Rank: highest county value ranked #1. (\$000): thousands of dollars. Nonmetro Kansas: Kansas total less Metropolitan Areas as defined by the Office of Management and Budget (OMB; released 3/6/2020). Per 1000: For nonmoney amounts, Per 1000=(county value / county population for the same year as the data) x 1000. \$ Per capita=(county value / county population for the same year as the data). Value= . indicates missing or suppressed data or value not calculated.

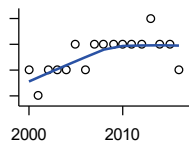
**Business**

**ESTABLISHMENTS: 1-19  
EMPLOYEES**



U.S. Census Bureau, County Business Patterns. Beginning with the 2017 data, any tabulation with fewer than 3 establishments were omitted from the release. Data for these establishments are included in the broader total.

Year	County	State of Kansas	Non Metro Kansas	County Rank	Per 1000 or \$ Per Capita
2000	46	64,527	25,381	105	22.1
2001	48	64,176	25,248	105	22.7
2002	42	64,886	25,208	105	19.6
2003	49	64,714	25,020	104	23.1
2004	49	65,554	24,995	105	23.5
2005	46	65,796	24,839	105	22.6
2006	45	65,764	24,589	104	22.2
2007	45	66,446	24,701	104	23.0
2008	46	65,322	24,257	104	23.6
2009	46	64,128	23,851	104	23.8
2010	50	64,015	23,857	104	26.1
2011	50	63,251	23,571	104	25.5
2012	49	63,519	23,575	104	25.4
2013	49	63,197	23,396	104	25.5
2014	45	63,113	23,229	104	23.9
2015	42	63,280	23,227	104	22.5
2016	45	63,630	23,117	104	24.3
2017	48	63,619	23,022	104	25.8
2018	47	63,233	22,745	104	25.8
2019	47	62,904	22,489	104	26.2
2020	45	62,634	22,173	104	26.1



**ESTABLISHMENTS: 20-99  
EMPLOYEES**

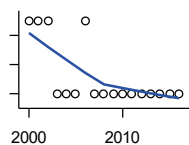
U.S. Census Bureau, County Business Patterns. Beginning with the 2017 data, any tabulation with fewer than 3 establishments were omitted from the release. Data for these establishments are included in the broader total.

Year	County	State of Kansas	Non Metro Kansas	County Rank	Per 1000 or \$ Per Capita
2000	1	8,714	2,653	105	0.5
2001	0	8,692	2,593	105	0.0
2002	1	8,582	2,554	105	0.5
2003	1	8,642	2,568	105	0.5
2004	1	8,658	2,590	105	0.5
2005	2	8,685	2,553	104	1.0
2006	1	8,922	2,612	105	0.5
2007	2	8,938	2,574	104	1.0
2008	2	8,939	2,587	104	1.0
2009	2	8,848	2,551	104	1.0
2010	2	8,612	2,454	105	1.0
2011	2	8,668	2,540	104	1.0
2012	2	8,700	2,500	103	1.0
2013	3	8,870	2,541	100	1.6
2014	2	9,121	2,590	104	1.1
2015	2	9,374	2,664	104	1.1
2016	1	9,412	2,596	105	0.5

County: county value. Kansas: state value. County Rank: highest county value ranked #1. (\$000): thousands of dollars. Nonmetro Kansas: Kansas total less Metropolitan Areas as defined by the Office of Management and Budget (OMB; released 3/6/2020). Per 1000: For nonmoney amounts, Per 1000=(county value / county population for the same year as the data) x 1000. \$ Per capita=(county value / county population for the same year as the data). Value= . indicates missing or suppressed data or value not calculated.

**Business**

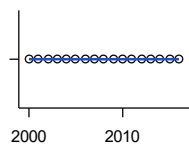
**ESTABLISHMENTS: 100-499  
EMPLOYEES**



U.S. Census Bureau, County Business Patterns. Beginning with the 2017 data, any tabulation with fewer than 3 establishments were omitted from the release. Data for these establishments are included in the broader total.

Year	County	State of Kansas	Non Metro Kansas	County Rank	Per 1000 or \$ Per Capita
2000	1	1,555	409	82	0.5
2001	1	1,555	406	86	0.5
2002	1	1,464	386	81	0.5
2003	0	1,470	378	105	0.0
2004	0	1,463	388	105	0.0
2005	0	1,537	400	105	0.0
2006	1	1,598	407	83	0.5
2007	0	1,602	416	105	0.0
2008	0	1,653	421	105	0.0
2009	0	1,551	394	105	0.0
2010	0	1,513	382	105	0.0
2011	0	1,523	395	105	0.0
2012	0	1,567	410	105	0.0
2013	0	1,581	407	105	0.0
2014	0	1,641	421	105	0.0
2015	0	1,693	414	105	0.0
2016	0	1,671	406	105	0.0

**ESTABLISHMENTS: 500 OR MORE  
EMPLOYEES**

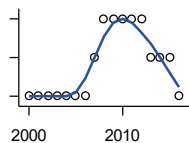


U.S. Census Bureau, County Business Patterns. Beginning with the 2017 data, any tabulation with fewer than 3 establishments were omitted from the release. Data for these establishments are included in the broader total.

Year	County	State of Kansas	Non Metro Kansas	County Rank	Per 1000 or \$ Per Capita
2000	0	143	32	105	0.0
2001	0	142	35	105	0.0
2002	0	145	35	105	0.0
2003	0	146	32	105	0.0
2004	0	152	36	105	0.0
2005	0	155	38	105	0.0
2006	0	162	45	105	0.0
2007	0	171	45	105	0.0
2008	0	182	49	105	0.0
2009	0	171	43	105	0.0
2010	0	161	46	105	0.0
2011	0	156	49	105	0.0
2012	0	158	49	105	0.0
2013	0	168	49	105	0.0
2014	0	180	52	105	0.0
2015	0	179	50	105	0.0
2016	0	171	53	105	0.0

County: county value. Kansas: state value. County Rank: highest county value ranked #1. (\$000): thousands of dollars. Nonmetro Kansas: Kansas total less Metropolitan Areas as defined by the Office of Management and Budget (OMB; released 3/6/2020). Per 1000: For nonmoney amounts, Per 1000=(county value / county population for the same year as the data) x 1000. \$ Per capita=(county value / county population for the same year as the data). Value= . indicates missing or suppressed data or value not calculated.

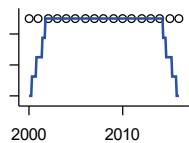
**Business**



**ESTABLISHMENTS: FORESTRY, FISHING, HUNTING, AND AG SUPPORT**

U.S. Census Bureau, County Business Patterns. Beginning with the 2017 data, any tabulation with fewer than 3 establishments were omitted from the release. Data for these establishments are included in the broader total.

Year	County	State of Kansas	Non Metro Kansas	County Rank	Per 1000 or \$ Per Capita
2000	0	190	149	105	0.0
2001	0	217	168	105	0.0
2002	0	224	176	105	0.0
2003	0	217	173	105	0.0
2004	0	211	165	105	0.0
2005	0	188	148	105	0.0
2006	0	193	158	105	0.0
2007	1	212	170	78	0.5
2008	2	197	158	50	1.0
2009	2	191	154	52	1.0
2010	2	192	161	50	1.0
2011	2	193	157	50	1.0
2012	2	204	164	50	1.0
2013	1	208	166	85	0.5
2014	1	194	152	83	0.5
2015	1	192	149	81	0.5
2016	0	181	142	105	0.0



**ESTABLISHMENTS: MINING**

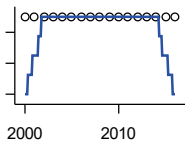
U.S. Census Bureau, County Business Patterns. Beginning with the 2017 data, any tabulation with fewer than 3 establishments were omitted from the release. Data for these establishments are included in the broader total.

Year	County	State of Kansas	Non Metro Kansas	County Rank	Per 1000 or \$ Per Capita
2000	1	868	619	88	0.5
2001	1	878	622	88	0.5
2002	1	847	615	89	0.5
2003	1	864	633	88	0.5
2004	1	880	647	87	0.5
2005	1	941	695	88	0.5
2006	1	991	734	88	0.5
2007	1	1,000	759	88	0.5
2008	1	1,047	799	90	0.5
2009	1	1,016	772	90	0.5
2010	1	1,009	762	91	0.5
2011	1	1,013	763	92	0.5
2012	1	1,048	789	91	0.5
2013	1	1,060	802	92	0.5
2014	1	1,102	828	93	0.5
2015	1	1,069	810	94	0.5
2016	1	990	747	93	0.5

County: county value. Kansas: state value. County Rank: highest county value ranked #1. (\$000): thousands of dollars. Nonmetro Kansas: Kansas total less Metropolitan Areas as defined by the Office of Management and Budget (OMB; released 3/6/2020). Per 1000: For nonmoney amounts, Per 1000=(county value / county population for the same year as the data) x 1000. \$ Per capita=(county value / county population for the same year as the data). Value= . indicates missing or suppressed data or value not calculated.

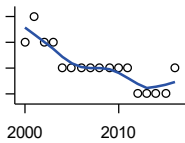
**Business**

**ESTABLISHMENTS: UTILITIES**



U.S. Census Bureau, County Business Patterns. Beginning with the 2017 data, any tabulation with fewer than 3 establishments were omitted from the release. Data for these establishments are included in the broader total.

Year	County	State of Kansas	Non Metro Kansas	County Rank	Per 1000 or \$ Per Capita
2000	1	274	192	96	0.5
2001	1	290	204	96	0.5
2002	1	278	195	93	0.5
2003	1	268	180	90	0.5
2004	1	247	164	90	0.5
2005	1	254	172	91	0.5
2006	1	248	169	92	0.5
2007	1	222	156	87	0.5
2008	1	244	166	87	0.5
2009	1	222	152	86	0.5
2010	1	197	129	82	0.5
2011	1	230	156	87	0.5
2012	1	232	156	86	0.5
2013	1	234	159	87	0.5
2014	1	232	160	89	0.5
2015	1	237	165	88	0.5
2016	1	245	171	90	0.5



**ESTABLISHMENTS: CONSTRUCTION**

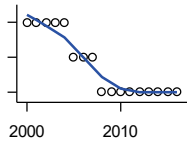
U.S. Census Bureau, County Business Patterns. Beginning with the 2017 data, any tabulation with fewer than 3 establishments were omitted from the release. Data for these establishments are included in the broader total.

Year	County	State of Kansas	Non Metro Kansas	County Rank	Per 1000 or \$ Per Capita
2000	2	7,703	2,616	105	1.0
2001	3	7,449	2,520	102	1.4
2002	2	7,519	2,482	104	0.9
2003	2	7,722	2,521	104	0.9
2004	1	7,887	2,518	105	0.5
2005	1	8,032	2,515	105	0.5
2006	1	8,031	2,494	105	0.5
2007	1	8,057	2,547	105	0.5
2008	1	7,831	2,522	105	0.5
2009	1	7,342	2,452	105	0.5
2010	1	7,064	2,394	105	0.5
2011	1	6,774	2,361	105	0.5
2012	0	6,741	2,393	105	0.0
2013	0	6,802	2,394	105	0.0
2014	0	6,920	2,383	105	0.0
2015	0	7,014	2,377	105	0.0
2016	1	6,988	2,343	105	0.5

County: county value. Kansas: state value. County Rank: highest county value ranked #1. (\$000): thousands of dollars. Nonmetro Kansas: Kansas total less Metropolitan Areas as defined by the Office of Management and Budget (OMB; released 3/6/2020). Per 1000: For nonmoney amounts, Per 1000=(county value / county population for the same year as the data) x 1000. \$ Per capita=(county value / county population for the same year as the data). Value= . indicates missing or suppressed data or value not calculated.

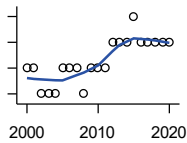
**Business**

**ESTABLISHMENTS:  
MANUFACTURING**



U.S. Census Bureau, County Business Patterns. Beginning with the 2017 data, any tabulation with fewer than 3 establishments were omitted from the release. Data for these establishments are included in the broader total.

Year	County	State of Kansas	Non Metro Kansas	County Rank	Per 1000 or \$ Per Capita
2000	2	3,229	1,316	98	1.0
2001	2	3,240	1,323	99	0.9
2002	2	3,181	1,289	99	0.9
2003	2	3,159	1,291	99	0.9
2004	2	3,179	1,313	98	1.0
2005	1	3,128	1,278	104	0.5
2006	1	3,165	1,290	105	0.5
2007	1	3,184	1,316	103	0.5
2008	0	3,171	1,297	105	0.0
2009	0	3,026	1,240	105	0.0
2010	0	2,955	1,222	105	0.0
2011	0	2,877	1,193	105	0.0
2012	0	2,889	1,197	105	0.0
2013	0	2,836	1,165	105	0.0
2014	0	2,831	1,168	105	0.0
2015	0	2,817	1,161	105	0.0
2016	0	2,791	1,150	105	0.0



**ESTABLISHMENTS: WHOLESALE  
TRADE**

U.S. Census Bureau, County Business Patterns. Beginning with the 2017 data, any tabulation with fewer than 3 establishments were omitted from the release. Data for these establishments are included in the broader total.

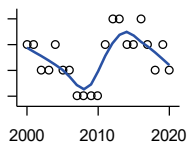
Year	County	State of Kansas	Non Metro Kansas	County Rank	Per 1000 or \$ Per Capita
2000	4	4,876	1,776	102	1.9
2001	4	4,811	1,769	102	1.9
2002	3	4,719	1,750	102	1.4
2003	3	4,590	1,637	102	1.4
2004	3	4,553	1,634	102	1.4
2005	4	4,541	1,618	99	2.0
2006	4	4,517	1,596	97	2.0
2007	4	4,555	1,629	98	2.0
2008	3	4,501	1,622	100	1.5
2009	4	4,437	1,614	98	2.1
2010	4	4,432	1,612	98	2.1
2011	4	4,400	1,660	99	2.0
2012	5	4,563	1,755	99	2.6
2013	5	4,501	1,741	99	2.6
2014	5	4,497	1,746	98	2.7
2015	6	4,459	1,755	94	3.2
2016	5	4,457	1,732	99	2.7
2017	5	4,436	1,774	97	2.7
2018	5	4,330	1,727	95	2.7
2019	5	4,291	1,713	95	2.8
2020	5	4,191	1,677	95	2.9

County: county value. Kansas: state value. County Rank: highest county value ranked #1. (\$000): thousands of dollars. Nonmetro Kansas: Kansas total less Metropolitan Areas as defined by the Office of Management and Budget (OMB; released 3/6/2020). Per 1000: For nonmoney amounts, Per 1000=(county value / county population for the same year as the data) x 1000. \$ Per capita=(county value / county population for the same year as the data). Value= . indicates missing or suppressed data or value not calculated.



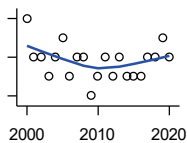
**Business**

**ESTABLISHMENTS: RETAIL TRADE**



U.S. Census Bureau, County Business Patterns. Beginning with the 2017 data, any tabulation with fewer than 3 establishments were omitted from the release. Data for these establishments are included in the broader total.

Year	County	State of Kansas	Non Metro Kansas	County Rank	Per 1000 or \$ Per Capita
2000	7	12,261	5,240	105	3.4
2001	7	12,206	5,207	105	3.3
2002	6	11,980	5,082	105	2.8
2003	6	11,834	5,049	105	2.8
2004	7	11,748	4,967	105	3.4
2005	6	11,562	4,834	105	2.9
2006	6	11,367	4,702	105	3.0
2007	5	11,306	4,653	105	2.6
2008	5	10,978	4,494	105	2.6
2009	5	10,760	4,372	105	2.6
2010	5	10,727	4,346	105	2.6
2011	7	10,655	4,289	103	3.6
2012	8	10,585	4,202	102	4.2
2013	8	10,433	4,147	101	4.2
2014	7	10,391	4,070	104	3.7
2015	7	10,327	4,061	104	3.7
2016	8	10,197	3,965	101	4.3
2017	7	10,074	3,885	103	3.8
2018	6	9,866	3,797	105	3.3
2019	7	9,762	3,750	103	3.9
2020	6	9,591	3,666	105	3.5



**ESTABLISHMENTS: TRANSPORTATION & WAREHOUSING**

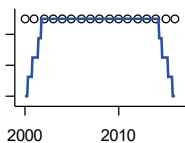
U.S. Census Bureau, County Business Patterns. Beginning with the 2017 data, any tabulation with fewer than 3 establishments were omitted from the release. Data for these establishments are included in the broader total.

Year	County	State of Kansas	Non Metro Kansas	County Rank	Per 1000 or \$ Per Capita
2000	5	2,474	1,293	91	2.4
2001	3	2,463	1,298	102	1.4
2002	3	2,461	1,278	101	1.4
2003	2	2,576	1,297	103	0.9
2004	3	2,651	1,324	99	1.4
2005	4	2,632	1,326	98	2.0
2006	2	2,626	1,295	101	1.0
2007	3	2,664	1,314	101	1.5
2008	3	2,675	1,329	97	1.5
2009	1	2,635	1,313	104	0.5
2010	2	2,615	1,313	101	1.0
2011	3	2,579	1,285	97	1.5
2012	2	2,519	1,243	101	1.0
2013	3	2,492	1,226	97	1.6
2014	2	2,518	1,240	101	1.1
2015	2	2,554	1,257	102	1.1
2016	2	2,567	1,241	101	1.1
2017	3	2,640	1,245	101	1.6
2018	3	2,627	1,238	101	1.6
2019	4	2,615	1,209	92	2.2
2020	3	2,589	1,179	99	1.7

County: county value. Kansas: state value. County Rank: highest county value ranked #1. (\$000): thousands of dollars. Nonmetro Kansas: Kansas total less Metropolitan Areas as defined by the Office of Management and Budget (OMB; released 3/6/2020). Per 1000: For nonmoney amounts, Per 1000=(county value / county population for the same year as the data) x 1000. \$ Per capita=(county value / county population for the same year as the data). Value= . indicates missing or suppressed data or value not calculated.

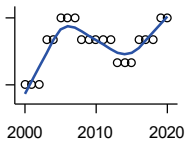
**Business**

**ESTABLISHMENTS: INFORMATION**



U.S. Census Bureau, County Business Patterns. Beginning with the 2017 data, any tabulation with fewer than 3 establishments were omitted from the release. Data for these establishments are included in the broader total.

Year	County	State of Kansas	Non Metro Kansas	County Rank	Per 1000 or \$ Per Capita
2000	1	1,542	578	103	0.5
2001	1	1,556	566	102	0.5
2002	1	1,517	551	100	0.5
2003	1	1,516	564	100	0.5
2004	1	1,518	556	101	0.5
2005	1	1,519	536	100	0.5
2006	1	1,549	559	102	0.5
2007	1	1,504	527	102	0.5
2008	1	1,468	522	101	0.5
2009	1	1,420	510	101	0.5
2010	1	1,437	527	102	0.5
2011	1	1,428	537	101	0.5
2012	1	1,387	515	102	0.5
2013	1	1,337	487	102	0.5
2014	1	1,335	496	103	0.5
2015	1	1,359	510	103	0.5
2016	1	1,431	537	103	0.5



**ESTABLISHMENTS: FINANCE & INSURANCE**

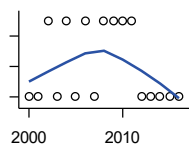
U.S. Census Bureau, County Business Patterns. Beginning with the 2017 data, any tabulation with fewer than 3 establishments were omitted from the release. Data for these establishments are included in the broader total.

Year	County	State of Kansas	Non Metro Kansas	County Rank	Per 1000 or \$ Per Capita
2000	3	5,209	1,848	105	1.4
2001	3	5,178	1,828	105	1.4
2002	3	5,496	1,911	105	1.4
2003	5	5,569	1,907	98	2.4
2004	5	5,572	1,913	99	2.4
2005	6	5,708	1,964	96	2.9
2006	6	5,877	1,976	96	3.0
2007	6	6,017	2,030	100	3.1
2008	5	6,010	2,023	102	2.6
2009	5	5,933	1,994	102	2.6
2010	5	5,872	1,975	103	2.6
2011	5	5,854	1,985	103	2.6
2012	5	5,993	2,024	104	2.6
2013	4	5,903	1,993	104	2.1
2014	4	5,894	2,000	104	2.1
2015	4	5,932	1,998	104	2.1
2016	5	6,022	2,021	103	2.7
2017	5	6,026	2,007	103	2.7
2018	5	6,023	1,997	101	2.7
2019	6	5,953	1,977	95	3.3
2020	6	5,926	1,969	97	3.5

County: county value. Kansas: state value. County Rank: highest county value ranked #1. (\$000): thousands of dollars. Nonmetro Kansas: Kansas total less Metropolitan Areas as defined by the Office of Management and Budget (OMB; released 3/6/2020). Per 1000: For nonmoney amounts, Per 1000=(county value / county population for the same year as the data) x 1000. \$ Per capita=(county value / county population for the same year as the data). Value= . indicates missing or suppressed data or value not calculated.

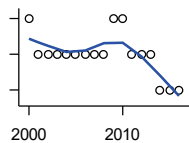
**Business**

**ESTABLISHMENTS: REAL ESTATE, RENTAL, AND LEASING**



U.S. Census Bureau, County Business Patterns. Beginning with the 2017 data, any tabulation with fewer than 3 establishments were omitted from the release. Data for these establishments are included in the broader total.

Year	County	State of Kansas	Non Metro Kansas	County Rank	Per 1000 or \$ Per Capita
2000	0	2,733	687	105	0.0
2001	0	2,849	724	105	0.0
2002	1	2,952	735	95	0.5
2003	0	3,007	727	105	0.0
2004	1	3,108	713	93	0.5
2005	0	3,203	727	105	0.0
2006	1	3,268	736	91	0.5
2007	0	3,286	721	105	0.0
2008	1	3,239	738	90	0.5
2009	1	3,122	723	89	0.5
2010	1	3,050	708	90	0.5
2011	1	3,002	692	89	0.5
2012	0	2,981	691	105	0.0
2013	0	3,046	717	105	0.0
2014	0	3,135	738	105	0.0
2015	0	3,179	744	105	0.0
2016	0	3,293	757	105	0.0



**ESTABLISHMENTS: PROFESSIONAL, SCIENTIFIC, AND TECHNICAL SERVICES**

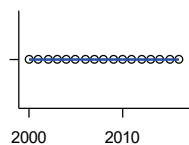
U.S. Census Bureau, County Business Patterns. Beginning with the 2017 data, any tabulation with fewer than 3 establishments were omitted from the release. Data for these establishments are included in the broader total.

Year	County	State of Kansas	Non Metro Kansas	County Rank	Per 1000 or \$ Per Capita
2000	4	6,424	1,690	102	1.9
2001	3	6,492	1,665	104	1.4
2002	3	6,719	1,704	104	1.4
2003	3	6,793	1,735	104	1.4
2004	3	7,025	1,730	102	1.4
2005	3	7,087	1,711	104	1.5
2006	3	7,231	1,736	104	1.5
2007	3	7,329	1,729	103	1.5
2008	3	7,133	1,671	103	1.5
2009	4	7,122	1,676	102	2.1
2010	4	7,172	1,680	101	2.1
2011	3	7,115	1,668	104	1.5
2012	3	7,122	1,681	105	1.6
2013	3	7,129	1,698	105	1.6
2014	2	7,206	1,682	105	1.1
2015	2	7,184	1,687	105	1.1
2016	2	7,146	1,659	104	1.1

County: county value. Kansas: state value. County Rank: highest county value ranked #1. (\$000): thousands of dollars. Nonmetro Kansas: Kansas total less Metropolitan Areas as defined by the Office of Management and Budget (OMB; released 3/6/2020). Per 1000: For nonmoney amounts, Per 1000=(county value / county population for the same year as the data) x 1000. \$ Per capita=(county value / county population for the same year as the data). Value= . indicates missing or suppressed data or value not calculated.

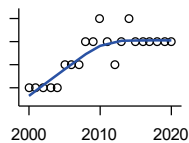
**Business**

**ESTABLISHMENTS: MANAGEMENT OF COMPANIES AND ENTERPRISES**



U.S. Census Bureau, County Business Patterns. Beginning with the 2017 data, any tabulation with fewer than 3 establishments were omitted from the release. Data for these establishments are included in the broader total.

Year	County	State of Kansas	Non Metro Kansas	County Rank	Per 1000 or \$ Per Capita
2000	0	622	145	105	0.0
2001	0	593	141	105	0.0
2002	0	597	152	105	0.0
2003	0	561	135	105	0.0
2004	0	569	133	105	0.0
2005	0	543	127	105	0.0
2006	0	542	131	105	0.0
2007	0	550	133	105	0.0
2008	0	553	139	105	0.0
2009	0	575	136	105	0.0
2010	0	567	131	105	0.0
2011	0	552	134	105	0.0
2012	0	593	135	105	0.0
2013	0	590	135	105	0.0
2014	0	603	136	105	0.0
2015	0	613	140	105	0.0
2016	0	655	171	105	0.0



**ESTABLISHMENTS: ADMIN, SUPPORT, WASTE MGMT., AND REMEDIATION**

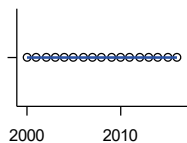
U.S. Census Bureau, County Business Patterns. Beginning with the 2017 data, any tabulation with fewer than 3 establishments were omitted from the release. Data for these establishments are included in the broader total.

Year	County	State of Kansas	Non Metro Kansas	County Rank	Per 1000 or \$ Per Capita
2000	1	3,307	871	101	0.5
2001	1	3,421	913	99	0.5
2002	1	3,232	882	99	0.5
2003	1	3,189	858	99	0.5
2004	1	3,301	891	101	0.5
2005	2	3,342	896	91	1.0
2006	2	3,395	886	93	1.0
2007	2	3,522	921	94	1.0
2008	3	3,587	932	85	1.5
2009	3	3,505	904	85	1.6
2010	4	3,494	897	78	2.1
2011	3	3,447	903	81	1.5
2012	2	3,462	891	90	1.0
2013	3	3,489	904	83	1.6
2014	4	3,569	933	75	2.1
2015	3	3,630	964	80	1.6
2016	3	3,705	987	81	1.6
2017	3	3,741	991	84	1.6
2018	3	3,740	983	84	1.6
2019	3	3,762	991	82	1.7
2020	3	3,807	989	80	1.7

County: county value. Kansas: state value. County Rank: highest county value ranked #1. (\$000): thousands of dollars. Nonmetro Kansas: Kansas total less Metropolitan Areas as defined by the Office of Management and Budget (OMB; released 3/6/2020). Per 1000: For nonmoney amounts, Per 1000=(county value / county population for the same year as the data) x 1000. \$ Per capita=(county value / county population for the same year as the data). Value= . indicates missing or suppressed data or value not calculated.

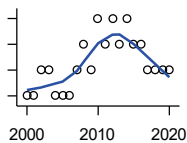
**Business**

**ESTABLISHMENTS: EDUCATIONAL SERVICES**



U.S. Census Bureau, County Business Patterns. Beginning with the 2017 data, any tabulation with fewer than 3 establishments were omitted from the release. Data for these establishments are included in the broader total.

Year	County	State of Kansas	Non Metro Kansas	County Rank	Per 1000 or \$ Per Capita
2000	0	604	155	105	0.0
2001	0	625	168	105	0.0
2002	0	666	165	105	0.0
2003	0	663	173	105	0.0
2004	0	690	173	105	0.0
2005	0	699	168	105	0.0
2006	0	698	175	105	0.0
2007	0	691	165	105	0.0
2008	0	692	158	105	0.0
2009	0	690	150	105	0.0
2010	0	700	149	105	0.0
2011	0	711	150	105	0.0
2012	0	724	145	105	0.0
2013	0	735	153	105	0.0
2014	0	722	152	105	0.0
2015	0	754	152	105	0.0
2016	0	728	150	105	0.0



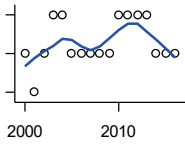
**ESTABLISHMENTS: HEALTH CARE AND SOCIAL ASSISTANCE**

U.S. Census Bureau, County Business Patterns. Beginning with the 2017 data, any tabulation with fewer than 3 establishments were omitted from the release. Data for these establishments are included in the broader total.

Year	County	State of Kansas	Non Metro Kansas	County Rank	Per 1000 or \$ Per Capita
2000	4	6,564	2,591	101	1.9
2001	4	6,636	2,590	101	1.9
2002	5	7,052	2,777	101	2.3
2003	5	7,129	2,792	101	2.4
2004	4	7,239	2,813	102	1.9
2005	4	7,412	2,855	102	2.0
2006	4	7,477	2,860	103	2.0
2007	5	7,661	2,864	101	2.6
2008	6	7,651	2,810	97	3.1
2009	5	7,696	2,787	100	2.6
2010	7	7,751	2,830	94	3.7
2011	6	7,804	2,817	97	3.1
2012	7	7,973	2,793	95	3.6
2013	6	7,877	2,729	99	3.1
2014	7	7,809	2,686	91	3.7
2015	6	8,103	2,692	94	3.2
2016	6	8,315	2,678	94	3.2
2017	5	8,136	2,646	97	2.7
2018	5	8,126	2,632	97	2.7
2019	5	8,184	2,587	97	2.8
2020	5	8,290	2,571	97	2.9

County: county value. Kansas: state value. County Rank: highest county value ranked #1. (\$000): thousands of dollars. Nonmetro Kansas: Kansas total less Metropolitan Areas as defined by the Office of Management and Budget (OMB; released 3/6/2020). Per 1000: For nonmoney amounts, Per 1000=(county value / county population for the same year as the data) x 1000. \$ Per capita=(county value / county population for the same year as the data). Value= . indicates missing or suppressed data or value not calculated.

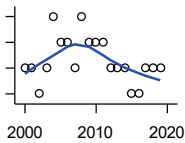
**Business**



**ESTABLISHMENTS: ARTS, ENTERTAINMENT, AND RECREATION**

U.S. Census Bureau, County Business Patterns. Beginning with the 2017 data, any tabulation with fewer than 3 establishments were omitted from the release. Data for these establishments are included in the broader total.

Year	County	State of Kansas	Non Metro Kansas	County Rank	Per 1000 or \$ Per Capita
2000	1	981	419	98	0.5
2001	0	1,009	433	105	0.0
2002	1	1,054	441	100	0.5
2003	2	1,045	443	89	0.9
2004	2	1,082	445	85	1.0
2005	1	1,109	446	100	0.5
2006	1	1,080	445	101	0.5
2007	1	1,092	444	100	0.5
2008	1	1,062	423	96	0.5
2009	1	1,063	421	98	0.5
2010	2	1,018	406	87	1.0
2011	2	997	387	89	1.0
2012	2	1,000	388	86	1.0
2013	2	1,009	377	84	1.0
2014	1	1,030	365	101	0.5
2015	1	1,031	357	101	0.5
2016	1	1,060	366	101	0.5



**ESTABLISHMENTS: ACCOMMODATION AND FOOD SERVICES**

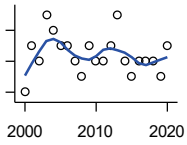
U.S. Census Bureau, County Business Patterns. Beginning with the 2017 data, any tabulation with fewer than 3 establishments were omitted from the release. Data for these establishments are included in the broader total.

Year	County	State of Kansas	Non Metro Kansas	County Rank	Per 1000 or \$ Per Capita
2000	3	5,536	2,213	105	1.4
2001	3	5,551	2,173	104	1.4
2002	2	5,610	2,174	105	0.9
2003	3	5,635	2,188	105	1.4
2004	5	5,681	2,160	99	2.4
2005	4	5,776	2,170	103	2.0
2006	4	5,745	2,132	101	2.0
2007	3	5,877	2,095	104	1.5
2008	5	5,843	2,052	100	2.6
2009	4	5,794	2,029	102	2.1
2010	4	5,898	2,046	101	2.1
2011	4	5,958	2,067	101	2.0
2012	3	5,951	2,046	102	1.6
2013	3	6,061	2,070	103	1.6
2014	3	5,985	2,024	102	1.6
2015	2	6,034	2,063	104	1.1
2016	2	6,126	2,094	104	1.1
2017	3	6,250	2,123	101	1.6
2018	3	6,256	2,128	100	1.6
2019	3	6,231	2,131	102	1.7

County: county value. Kansas: state value. County Rank: highest county value ranked #1. (\$000): thousands of dollars. Nonmetro Kansas: Kansas total less Metropolitan Areas as defined by the Office of Management and Budget (OMB; released 3/6/2020). Per 1000: For nonmoney amounts, Per 1000=(county value / county population for the same year as the data) x 1000. \$ Per capita=(county value / county population for the same year as the data). Value= . indicates missing or suppressed data or value not calculated.

**Business**

**ESTABLISHMENTS: OTHER SERVICES**

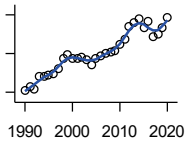


U.S. Census Bureau, County Business Patterns. Beginning with the 2017 data, any tabulation with fewer than 3 establishments were omitted from the release. Data for these establishments are included in the broader total.

Year	County	State of Kansas	Non Metro Kansas	County Rank	Per 1000 or \$ Per Capita
2000	6	8,423	3,636	105	2.9
2001	9	8,310	3,614	104	4.2
2002	8	8,552	3,658	105	3.7
2003	11	8,411	3,605	99	5.2
2004	10	8,343	3,597	102	4.8
2005	9	8,321	3,571	103	4.4
2006	9	8,225	3,490	105	4.4
2007	8	8,355	3,534	105	4.1
2008	7	8,104	3,406	105	3.6
2009	9	8,040	3,405	102	4.7
2010	8	7,998	3,379	105	4.2
2011	8	7,883	3,294	104	4.1
2012	9	7,913	3,303	102	4.7
2013	11	7,947	3,290	97	5.7
2014	8	7,943	3,285	104	4.2
2015	7	7,869	3,255	105	3.7
2016	8	7,839	3,204	105	4.3
2017	8	7,873	3,189	104	4.3
2018	8	7,853	3,176	104	4.4
2019	7	7,834	3,138	104	3.9
2020	9	7,787	3,073	97	5.2

County: county value. Kansas: state value. County Rank: highest county value ranked #1. (\$000): thousands of dollars. Nonmetro Kansas: Kansas total less Metropolitan Areas as defined by the Office of Management and Budget (OMB; released 3/6/2020). Per 1000: For nonmoney amounts, Per 1000=(county value / county population for the same year as the data) x 1000. \$ Per capita=(county value / county population for the same year as the data). Value= . indicates missing or suppressed data or value not calculated.

**Business**



**TOTAL ANNUAL PAYROLL (\$000)  
COUNTY BUSINESS PATTERNS**

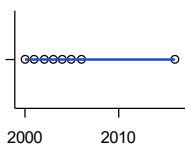
U.S. Census Bureau, County Business Patterns. Beginning with the 2017 data, any tabulation with fewer than 3 establishments were omitted from the release. Data for these establishments are included in the broader total.

Year	County	State of Kansas	Non Metro Kansas	County Rank	Per 1000 or \$ Per Capita
1990	2,205	17,487,316	4,442,429	105	1,012.9
1991	2,513	18,162,326	4,612,616	105	1,142.8
1992	2,338	19,244,346	4,882,060	105	1,092.0
1993	3,609	20,087,190	5,182,780	103	1,714.5
1994	3,638	21,201,652	5,541,423	103	1,686.6
1995	3,753	22,825,920	5,875,310	103	1,733.5
1996	3,898	24,613,884	6,198,398	104	1,818.9
1997	4,379	26,787,098	6,599,061	104	2,061.7
1998	5,522	28,747,576	6,871,794	103	2,635.8
1999	5,881	30,600,434	7,121,961	103	2,805.8
2000	5,503	31,990,762	7,520,424	104	2,639.3
2001	5,481	33,303,992	7,598,165	104	2,587.8
2002	5,578	33,152,962	7,572,002	104	2,607.8
2003	5,339	34,040,944	7,726,561	104	2,516.0
2004	4,827	35,725,812	8,303,779	105	2,310.7
2005	5,443	36,646,064	8,586,986	105	2,670.8
2006	5,724	39,251,388	9,178,947	105	2,823.9
2007	6,067	42,022,753	.	103	3,097.0
2008	6,178	43,984,689	.	103	3,169.8
2009	6,222	42,146,866	.	102	3,225.5
2010	6,961	42,686,303	10,294,015	103	3,633.1
2011	7,442	43,733,944	.	101	3,802.8
2012	8,761	45,608,072	11,222,183	101	4,546.4
2013	9,136	47,715,601	11,446,751	101	4,748.4
2014	9,582	49,712,832	11,957,931	101	5,088.7
2015	8,704	51,259,676	11,975,718	104	4,657.0
2016	9,308	51,016,318	12,148,646	104	5,028.6
2017	7,754	52,754,605	12,448,592	105	4,162.1
2018	7,951	55,087,460	12,810,270	105	4,363.9
2019	8,661	57,272,387	13,123,288	104	4,827.8
2020	9,785	58,374,388	14,007,955	104	5,679.0

County: county value. Kansas: state value. County Rank: highest county value ranked #1. (\$000): thousands of dollars. Nonmetro Kansas: Kansas total less Metropolitan Areas as defined by the Office of Management and Budget (OMB; released 3/6/2020). Per 1000: For nonmoney amounts, Per 1000=(county value / county population for the same year as the data) x 1000. \$ Per capita=(county value / county population for the same year as the data). Value= . indicates missing or suppressed data or value not calculated.



**Business**



**TOTAL ANNUAL PAYROLL(\$000):  
FORESTRY, FISHING, HUNTING, AND  
AG SUPPORT**

U.S. Census Bureau, County Business Patterns. Beginning with the 2017 data, any tabulation with fewer than 3 establishments were omitted from the release. Data for these establishments are included in the broader total.

Year	County	State of Kansas	Non Metro Kansas	County Rank	Per 1000 or \$ Per Capita
2000	0	13,551	.	.	0.0
2001	0	.	.	.	0.0
2002	0	16,528	.	.	0.0
2003	0	17,247	.	.	0.0
2004	0	17,552	.	.	0.0
2005	0	16,298	.	.	0.0
2006	0	17,908	.	.	0.0
2007	.	22,199	.	.	.
2008	.	21,359	.	.	.
2009	.	22,466	.	.	.
2010	.	22,753	.	.	.
2011	.	23,320	.	.	.
2012	.	27,492	.	.	.
2013	.	30,360	.	.	.
2014	.	34,862	.	.	.
2015	.	35,980	.	.	.
2016	0	31,488	.	.	0.0

**TOTAL ANNUAL PAYROLL(\$000):  
MINING**

U.S. Census Bureau, County Business Patterns. Beginning with the 2017 data, any tabulation with fewer than 3 establishments were omitted from the release. Data for these establishments are included in the broader total.

Year	County	State of Kansas	Non Metro Kansas	County Rank	Per 1000 or \$ Per Capita
2000	.	240,079	.	.	.
2001	.	273,838	.	.	.
2002	.	262,277	.	.	.
2003	.	290,652	.	.	.
2004	.	326,997	.	.	.
2005	.	381,069	.	.	.
2006	.	482,102	.	.	.
2007	.	551,751	.	.	.
2008	.	620,446	.	.	.
2009	.	465,070	.	.	.
2010	.	485,841	.	.	.
2011	.	541,536	.	.	.
2012	.	600,402	.	.	.
2013	.	599,788	.	.	.
2014	.	678,673	.	.	.
2015	.	552,658	.	.	.

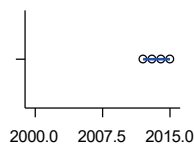
County: county value. Kansas: state value. County Rank: highest county value ranked #1. (\$000): thousands of dollars. Nonmetro Kansas: Kansas total less Metropolitan Areas as defined by the Office of Management and Budget (OMB; released 3/6/2020). Per 1000: For nonmoney amounts, Per 1000=(county value / county population for the same year as the data) x 1000. \$ Per capita=(county value / county population for the same year as the data). Value= . indicates missing or suppressed data or value not calculated.

**Business**

**TOTAL ANNUAL PAYROLL(\$000):  
UTILITIES**

U.S. Census Bureau, County Business Patterns. Beginning with the 2017 data, any tabulation with fewer than 3 establishments were omitted from the release. Data for these establishments are included in the broader total.

Year	County	State of Kansas	Non Metro Kansas	County Rank	Per 1000 or \$ Per Capita
2000	.	410,313	.	.	.
2001	.	452,057	.	.	.
2002	.	377,559	.	.	.
2003	.	378,157	.	.	.
2004	.	377,809	.	.	.
2005	.	429,864	.	.	.
2006	.	443,999	.	.	.
2007	.	480,068	.	.	.
2008	.	541,066	.	.	.
2009	.	563,373	.	.	.
2010	.	512,628	.	.	.
2011	.	653,229	.	.	.
2012	.	625,451	.	.	.
2013	.	625,347	.	.	.
2014	.	610,960	.	.	.
2015	.	668,559	.	.	.



**TOTAL ANNUAL PAYROLL(\$000):  
CONSTRUCTION**

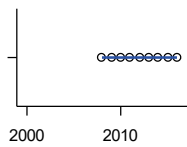
U.S. Census Bureau, County Business Patterns. Beginning with the 2017 data, any tabulation with fewer than 3 establishments were omitted from the release. Data for these establishments are included in the broader total.

Year	County	State of Kansas	Non Metro Kansas	County Rank	Per 1000 or \$ Per Capita
2000	.	2,256,057	.	.	.
2001	.	2,320,652	.	.	.
2002	.	2,302,229	.	.	.
2003	.	2,282,021	.	.	.
2004	.	2,302,854	.	.	.
2005	.	2,465,977	.	.	.
2006	.	2,700,351	.	.	.
2007	.	2,772,168	.	.	.
2008	.	2,950,073	.	.	.
2009	.	2,709,864	.	.	.
2010	.	2,553,555	.	.	.
2011	.	2,550,355	.	.	.
2012	0	2,733,284	.	.	0.0
2013	0	2,866,801	.	.	0.0
2014	0	3,135,814	.	.	0.0
2015	0	3,270,952	.	.	0.0

County: county value. Kansas: state value. County Rank: highest county value ranked #1. (\$000): thousands of dollars. Nonmetro Kansas: Kansas total less Metropolitan Areas as defined by the Office of Management and Budget (OMB; released 3/6/2020). Per 1000: For nonmoney amounts, Per 1000=(county value / county population for the same year as the data) x 1000. \$ Per capita=(county value / county population for the same year as the data). Value= . indicates missing or suppressed data or value not calculated.

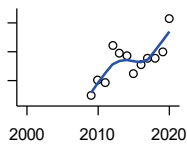
**Business**

**TOTAL ANNUAL PAYROLL(\$000):  
MANUFACTURING**



U.S. Census Bureau, County Business Patterns. Beginning with the 2017 data, any tabulation with fewer than 3 establishments were omitted from the release. Data for these establishments are included in the broader total.

Year	County	State of Kansas	Non Metro Kansas	County Rank	Per 1000 or \$ Per Capita
2000	.	7,015,414	.	.	.
2001	.	7,301,706	.	.	.
2002	.	6,802,605	.	.	.
2003	.	6,691,611	.	.	.
2004	.	6,985,656	.	.	.
2005	.	7,221,614	.	.	.
2006	.	7,621,873	.	.	.
2007	.	7,873,359	.	.	.
2008	0	8,441,541	.	.	0.0
2009	0	7,477,838	.	.	0.0
2010	0	7,556,955	.	.	0.0
2011	0	7,747,934	.	.	0.0
2012	0	7,704,851	.	.	0.0
2013	0	8,365,542	.	.	0.0
2014	0	8,787,306	.	.	0.0
2015	0	9,052,105	.	.	0.0
2016	0	8,868,744	.	.	0.0



**TOTAL ANNUAL PAYROLL(\$000):  
WHOLESALE TRADE**

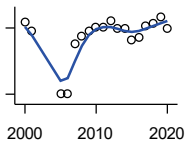
U.S. Census Bureau, County Business Patterns. Beginning with the 2017 data, any tabulation with fewer than 3 establishments were omitted from the release. Data for these establishments are included in the broader total.

Year	County	State of Kansas	Non Metro Kansas	County Rank	Per 1000 or \$ Per Capita
2000	.	2,332,755	.	.	.
2001	.	2,283,169	.	.	.
2002	.	2,107,653	.	.	.
2003	.	2,622,701	.	.	.
2004	.	2,663,196	.	.	.
2005	.	2,345,990	.	.	.
2006	.	2,592,211	.	.	.
2007	.	2,682,542	.	.	.
2008	.	3,078,655	.	.	.
2009	735	2,940,949	.	.	381.0
2010	1,018	3,097,628	.	.	531.3
2011	957	3,305,811	.	.	489.0
2012	1,611	3,339,997	.	.	836.0
2013	1,469	3,460,512	.	.	763.5
2014	1,439	3,712,075	.	.	764.2
2015	1,121	3,760,189	.	.	599.8
2016	1,266	3,738,207	.	.	684.0
2017	1,381	3,822,730	.	.	741.3
2018	1,379	3,814,353	.	.	756.9
2019	1,495	4,025,802	.	.	833.3
2020	2,076	4,224,666	.	.	1,204.9

County: county value. Kansas: state value. County Rank: highest county value ranked #1. (\$000): thousands of dollars. Nonmetro Kansas: Kansas total less Metropolitan Areas as defined by the Office of Management and Budget (OMB; released 3/6/2020). Per 1000: For nonmoney amounts, Per 1000=(county value / county population for the same year as the data) x 1000. \$ Per capita=(county value / county population for the same year as the data). Value= . indicates missing or suppressed data or value not calculated.

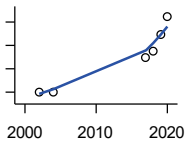
**Business**

**TOTAL ANNUAL PAYROLL(\$000):  
RETAIL TRADE**



U.S. Census Bureau, County Business Patterns. Beginning with the 2017 data, any tabulation with fewer than 3 establishments were omitted from the release. Data for these establishments are included in the broader total.

Year	County	State of Kansas	Non Metro Kansas	County Rank	Per 1000 or \$ Per Capita
2000	650	2,747,001	.	.	311.8
2001	573	2,813,226	.	.	270.5
2002	.	2,854,231	.	.	.
2003	.	2,773,674	.	.	.
2004	.	2,847,826	.	.	.
2005	0	2,952,196	.	.	0.0
2006	0	3,126,495	.	.	0.0
2007	460	3,201,169	.	.	234.8
2008	528	3,261,054	.	.	270.9
2009	567	3,232,246	.	.	293.9
2010	606	3,321,838	.	.	316.3
2011	612	3,384,607	.	.	312.7
2012	664	3,409,755	.	.	344.6
2013	591	3,483,752	.	.	307.2
2014	594	3,617,933	.	.	315.5
2015	492	3,712,165	.	.	263.2
2016	517	3,826,889	.	.	279.3
2017	621	3,797,849	.	.	333.3
2018	640	3,818,988	.	.	351.3
2019	701	3,908,994	.	.	390.7
2020	601	3,984,443	.	.	348.8



**TOTAL ANNUAL PAYROLL(\$000):  
TRANSPORTATION &  
WAREHOUSING**

U.S. Census Bureau, County Business Patterns. Beginning with the 2017 data, any tabulation with fewer than 3 establishments were omitted from the release. Data for these establishments are included in the broader total.

Year	County	State of Kansas	Non Metro Kansas	County Rank	Per 1000 or \$ Per Capita
2000	.	1,044,835	.	.	.
2001	.	1,089,405	.	.	.
2002	9	1,094,636	.	.	4.2
2003	.	1,316,655	.	.	.
2004	10	1,439,800	.	.	4.8
2005	.	1,393,651	.	.	.
2006	.	1,528,551	.	.	.
2007	.	1,788,267	.	.	.
2008	.	1,722,697	.	.	.
2009	.	1,618,598	.	.	.
2010	.	1,735,761	.	.	.
2011	.	1,739,165	.	.	.
2012	.	1,984,976	.	.	.
2013	.	2,006,261	.	.	.
2014	.	2,097,377	.	.	.
2015	.	2,190,072	.	.	.
2017	737	2,546,061	.	.	395.6
2018	883	2,663,188	.	.	484.6
2019	1,237	2,879,406	.	.	689.5
2020	1,618	2,962,461	.	.	939.1

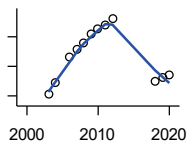
County: county value. Kansas: state value. County Rank: highest county value ranked #1. (\$000): thousands of dollars. Nonmetro Kansas: Kansas total less Metropolitan Areas as defined by the Office of Management and Budget (OMB; released 3/6/2020). Per 1000: For nonmoney amounts, Per 1000=(county value / county population for the same year as the data) x 1000. \$ Per capita=(county value / county population for the same year as the data). Value= . indicates missing or suppressed data or value not calculated.

**Business**

**TOTAL ANNUAL PAYROLL(\$000):  
INFORMATION**

U.S. Census Bureau, County Business Patterns. Beginning with the 2017 data, any tabulation with fewer than 3 establishments were omitted from the release. Data for these establishments are included in the broader total.

Year	County	State of Kansas	Non Metro Kansas	County Rank	Per 1000 or \$ Per Capita
2000	.	1,923,381	.	.	.
2001	.	2,218,610	.	.	.
2002	.	2,298,108	.	.	.
2003	.	2,378,673	.	.	.
2004	.	2,392,990	.	.	.
2005	.	2,395,081	.	.	.
2006	.	2,586,483	.	.	.
2007	.	2,594,138	.	.	.
2008	.	3,043,244	.	.	.
2009	.	3,045,570	.	.	.
2010	.	2,481,580	.	.	.
2011	.	2,513,805	.	.	.
2012	.	2,535,555	.	.	.
2013	.	2,805,017	.	.	.
2014	.	2,393,609	.	.	.
2015	.	2,406,323	.	.	.



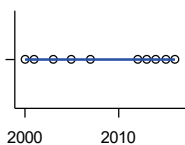
**TOTAL ANNUAL PAYROLL(\$000):  
FINANCE & INSURANCE**

U.S. Census Bureau, County Business Patterns. Beginning with the 2017 data, any tabulation with fewer than 3 establishments were omitted from the release. Data for these establishments are included in the broader total.

Year	County	State of Kansas	Non Metro Kansas	County Rank	Per 1000 or \$ Per Capita
2000	.	2,083,565	.	.	.
2001	.	2,129,587	.	.	.
2002	.	2,414,120	.	.	.
2003	782	2,608,579	.	.	368.5
2004	968	2,676,910	.	.	463.4
2005	.	2,786,136	.	.	.
2006	1,397	2,928,931	.	.	689.2
2007	1,548	3,096,017	.	.	790.2
2008	1,636	3,322,977	.	.	839.4
2009	1,790	3,206,839	.	.	927.9
2010	1,879	3,211,300	.	.	980.7
2011	1,943	3,404,633	.	.	992.8
2012	2,059	3,611,165	.	.	1,068.5
2013	.	3,896,051	.	.	.
2014	.	4,044,315	.	.	.
2015	.	4,113,060	.	.	.
2018	993	4,682,552	.	.	545.0
2019	1,055	4,814,201	.	.	588.1
2020	1,107	5,288,529	.	.	642.5

County: county value. Kansas: state value. County Rank: highest county value ranked #1. (\$000): thousands of dollars. Nonmetro Kansas: Kansas total less Metropolitan Areas as defined by the Office of Management and Budget (OMB; released 3/6/2020). Per 1000: For nonmoney amounts, Per 1000=(county value / county population for the same year as the data) x 1000. \$ Per capita=(county value / county population for the same year as the data). Value= . indicates missing or suppressed data or value not calculated.

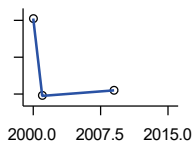
**Business**



**TOTAL ANNUAL PAYROLL(\$000):  
REAL ESTATE, RENTAL, AND  
LEASING**

U.S. Census Bureau, County Business Patterns. Beginning with the 2017 data, any tabulation with fewer than 3 establishments were omitted from the release. Data for these establishments are included in the broader total.

Year	County	State of Kansas	Non Metro Kansas	County Rank	Per 1000 or \$ Per Capita
2000	0	360,637	.	.	0.0
2001	0	397,371	.	.	0.0
2002	.	403,695	.	.	.
2003	0	437,786	.	.	0.0
2004	.	430,719	.	.	.
2005	0	465,149	.	.	0.0
2006	.	478,811	.	.	.
2007	0	452,969	.	.	0.0
2008	.	484,149	.	.	.
2009	.	450,884	.	.	.
2010	.	487,255	.	.	.
2011	.	535,120	.	.	.
2012	0	531,039	.	.	0.0
2013	0	538,796	.	.	0.0
2014	0	542,307	.	.	0.0
2015	0	595,030	.	.	0.0
2016	0	607,668	.	.	0.0



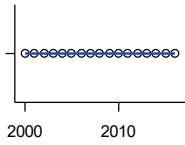
**TOTAL ANNUAL PAYROLL(\$000):  
PROFESSIONAL, SCIENTIFIC, AND  
TECHNICAL SERVICES**

U.S. Census Bureau, County Business Patterns. Beginning with the 2017 data, any tabulation with fewer than 3 establishments were omitted from the release. Data for these establishments are included in the broader total.

Year	County	State of Kansas	Non Metro Kansas	County Rank	Per 1000 or \$ Per Capita
2000	111	2,057,313	.	.	53.2
2001	69	2,152,937	.	.	32.6
2002	.	2,150,085	.	.	.
2003	.	2,052,712	.	.	.
2004	.	2,531,457	.	.	.
2005	.	2,418,500	.	.	.
2006	.	2,655,690	.	.	.
2007	.	2,901,544	.	.	.
2008	.	2,903,802	.	.	.
2009	72	3,071,611	.	.	37.3
2010	.	3,037,182	.	.	.
2011	.	3,132,082	.	.	.
2012	.	3,455,548	.	.	.
2013	.	3,777,729	.	.	.
2014	.	3,981,580	.	.	.
2015	.	4,039,074	.	.	.

County: county value. Kansas: state value. County Rank: highest county value ranked #1. (\$000): thousands of dollars. Nonmetro Kansas: Kansas total less Metropolitan Areas as defined by the Office of Management and Budget (OMB; released 3/6/2020). Per 1000: For nonmoney amounts, Per 1000=(county value / county population for the same year as the data) x 1000. \$ Per capita=(county value / county population for the same year as the data). Value= . indicates missing or suppressed data or value not calculated.

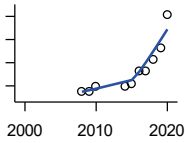
**Business**



**TOTAL ANNUAL PAYROLL(\$000):  
MANAGEMENT OF COMPANIES AND  
ENTERPRISES**

U.S. Census Bureau, County Business Patterns. Beginning with the 2017 data, any tabulation with fewer than 3 establishments were omitted from the release. Data for these establishments are included in the broader total.

Year	County	State of Kansas	Non Metro Kansas	County Rank	Per 1000 or \$ Per Capita
2000	0	1,362,735	.	.	0.0
2001	0	1,279,253	.	.	0.0
2002	0	1,311,368	.	.	0.0
2003	0	1,352,119	.	.	0.0
2004	0	1,378,891	.	.	0.0
2005	0	1,510,876	.	.	0.0
2006	0	1,626,320	.	.	0.0
2007	0	2,233,654	.	.	0.0
2008	0	1,848,656	.	.	0.0
2009	0	1,601,158	.	.	0.0
2010	0	2,003,048	.	.	0.0
2011	0	1,677,619	.	.	0.0
2012	0	1,834,430	.	.	0.0
2013	0	1,938,100	.	.	0.0
2014	0	2,117,232	.	.	0.0
2015	0	2,451,126	.	.	0.0
2016	0	2,167,620	.	.	0.0



**TOTAL ANNUAL PAYROLL(\$000):  
ADMIN, SUPPORT, WASTE MGMT.,  
AND REMEDIATION**

U.S. Census Bureau, County Business Patterns. Beginning with the 2017 data, any tabulation with fewer than 3 establishments were omitted from the release. Data for these establishments are included in the broader total.

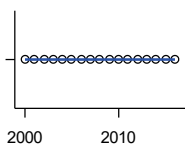
Year	County	State of Kansas	Non Metro Kansas	County Rank	Per 1000 or \$ Per Capita
2000	.	1,388,712	.	.	.
2001	.	1,416,480	.	.	.
2002	.	1,378,905	.	.	.
2003	.	1,387,061	.	.	.
2004	.	1,544,442	.	.	.
2005	.	1,694,687	.	.	.
2006	.	1,800,846	.	.	.
2007	.	1,978,025	.	.	.
2008	89	2,096,864	.	.	45.7
2009	87	1,832,540	.	.	45.1
2010	99	2,117,325	.	.	51.7
2011	.	2,114,970	.	.	.
2012	.	2,230,250	.	.	.
2013	.	2,214,320	.	.	.
2014	98	2,444,170	.	.	52.0
2015	104	2,577,592	.	.	55.6
2016	131	2,760,706	.	.	70.8
2017	133	3,026,927	.	.	71.4
2018	158	3,007,347	.	.	86.7
2019	183	3,075,485	.	.	102.0
2020	254	3,250,046	.	.	147.4

County: county value. Kansas: state value. County Rank: highest county value ranked #1. (\$000): thousands of dollars. Nonmetro Kansas: Kansas total less Metropolitan Areas as defined by the Office of Management and Budget (OMB; released 3/6/2020). Per 1000: For nonmoney amounts, Per 1000=(county value / county population for the same year as the data) x 1000. \$ Per capita=(county value / county population for the same year as the data). Value= . indicates missing or suppressed data or value not calculated.

**Business**

**TOTAL ANNUAL PAYROLL(\$000):  
EDUCATIONAL SERVICES**

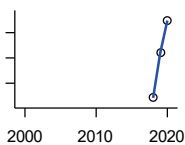
Year	County	State of Kansas	Non Metro Kansas	County Rank	Per 1000 or \$ Per Capita
2000	0	299,843	.	.	0.0
2001	0	320,606	.	.	0.0
2002	0	353,531	.	.	0.0
2003	0	350,814	.	.	0.0
2004	0	361,644	.	.	0.0
2005	0	375,781	.	.	0.0
2006	0	400,565	.	.	0.0
2007	0	414,233	.	.	0.0
2008	0	463,210	.	.	0.0
2009	0	468,856	.	.	0.0
2010	0	487,670	.	.	0.0
2011	0	504,964	.	.	0.0
2012	0	508,448	.	.	0.0
2013	0	553,995	.	.	0.0
2014	0	612,073	.	.	0.0
2015	0	579,794	.	.	0.0
2016	0	571,582	.	.	0.0



U.S. Census Bureau, County Business Patterns. Beginning with the 2017 data, any tabulation with fewer than 3 establishments were omitted from the release. Data for these establishments are included in the broader total.

**TOTAL ANNUAL PAYROLL(\$000):  
HEALTH CARE AND SOCIAL ASSISTANCE**

Year	County	State of Kansas	Non Metro Kansas	County Rank	Per 1000 or \$ Per Capita
2000	.	4,120,595	.	.	.
2001	.	4,445,027	.	.	.
2002	.	4,705,220	.	.	.
2003	.	4,939,323	.	.	.
2004	.	5,232,394	.	.	.
2005	.	5,487,089	.	.	.
2006	.	5,814,218	.	.	.
2007	.	6,186,471	.	.	.
2008	.	6,490,627	.	.	.
2009	.	6,749,962	.	.	.
2010	.	6,871,727	.	.	.
2011	.	7,129,655	.	.	.
2012	.	7,614,853	.	.	.
2013	.	7,541,515	.	.	.
2014	.	7,733,621	.	.	.
2015	.	7,969,650	.	.	.
2018	3,021	8,637,619	.	.	1,658.1
2019	3,110	8,854,414	.	.	1,733.6
2020	3,174	9,309,269	.	.	1,842.1

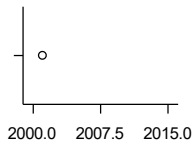


U.S. Census Bureau, County Business Patterns. Beginning with the 2017 data, any tabulation with fewer than 3 establishments were omitted from the release. Data for these establishments are included in the broader total.

County: county value. Kansas: state value. County Rank: highest county value ranked #1. (\$000): thousands of dollars. Nonmetro Kansas: Kansas total less Metropolitan Areas as defined by the Office of Management and Budget (OMB; released 3/6/2020). Per 1000: For nonmoney amounts, Per 1000=(county value / county population for the same year as the data) x 1000. \$ Per capita=(county value / county population for the same year as the data). Value= . indicates missing or suppressed data or value not calculated.



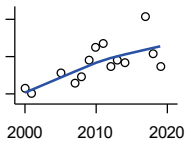
**Business**



**TOTAL ANNUAL PAYROLL(\$000):  
ARTS, ENTERTAINMENT, AND  
RECREATION**

U.S. Census Bureau, County Business Patterns. Beginning with the 2017 data, any tabulation with fewer than 3 establishments were omitted from the release. Data for these establishments are included in the broader total.

Year	County	State of Kansas	Non Metro Kansas	County Rank	Per 1000 or \$ Per Capita
2000	.	195,784	.	.	.
2001	0	203,511	.	.	0.0
2002	.	206,204	.	.	.
2003	.	185,049	.	.	.
2004	.	190,742	.	.	.
2005	.	196,594	.	.	.
2006	.	201,049	.	.	.
2007	.	220,435	.	.	.
2008	.	236,986	.	.	.
2009	.	237,116	.	.	.
2010	.	233,285	.	.	.
2011	.	234,351	.	.	.
2012	.	254,169	.	.	.
2013	.	278,474	.	.	.
2014	.	289,103	.	.	.
2015	.	300,253	.	.	.



**TOTAL ANNUAL PAYROLL(\$000):  
ACCOMMODATION AND FOOD  
SERVICES**

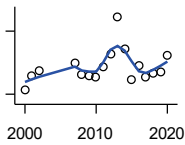
U.S. Census Bureau, County Business Patterns. Beginning with the 2017 data, any tabulation with fewer than 3 establishments were omitted from the release. Data for these establishments are included in the broader total.

Year	County	State of Kansas	Non Metro Kansas	County Rank	Per 1000 or \$ Per Capita
2000	46	926,831	.	.	22.1
2001	40	960,196	.	.	18.9
2002	.	930,510	.	.	.
2003	.	992,313	.	.	.
2004	.	1,046,901	.	.	.
2005	62	1,101,854	.	.	30.4
2006	.	1,185,280	.	.	.
2007	51	1,431,100	.	.	26.0
2008	59	1,271,594	.	.	30.3
2009	76	1,283,065	.	.	39.4
2010	90	1,296,556	.	.	47.0
2011	94	1,364,281	.	.	48.0
2012	69	1,388,337	.	.	35.8
2013	76	1,476,335	.	.	39.5
2014	73	1,572,021	.	.	38.8
2015	.	1,640,144	.	.	.
2017	123	1,824,791	.	.	66.0
2018	83	1,880,364	.	.	45.6
2019	70	1,958,603	.	.	39.0

County: county value. Kansas: state value. County Rank: highest county value ranked #1. (\$000): thousands of dollars. Nonmetro Kansas: Kansas total less Metropolitan Areas as defined by the Office of Management and Budget (OMB; released 3/6/2020). Per 1000: For nonmoney amounts, Per 1000=(county value / county population for the same year as the data) x 1000. \$ Per capita=(county value / county population for the same year as the data). Value= . indicates missing or suppressed data or value not calculated.

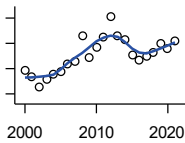
**Business**

**TOTAL ANNUAL PAYROLL(\$000):  
OTHER SERVICES**



U.S. Census Bureau, County Business Patterns. Beginning with the 2017 data, any tabulation with fewer than 3 establishments were omitted from the release. Data for these establishments are included in the broader total.

Year	County	State of Kansas	Non Metro Kansas	County Rank	Per 1000 or \$ Per Capita
2000	122	965,540	.	.	58.5
2001	189	996,716	.	.	89.2
2002	211	1,007,464	.	.	98.6
2003	.	979,466	.	.	.
2004	.	970,383	.	.	.
2005	.	1,005,537	.	.	.
2006	.	1,055,932	.	.	.
2007	249	1,141,551	.	.	127.1
2008	193	1,184,016	.	.	99.0
2009	190	1,167,154	.	.	98.5
2010	180	1,170,201	.	.	93.9
2011	229	1,173,775	.	.	117.0
2012	289	1,217,210	.	.	150.0
2013	468	1,254,933	.	.	243.2
2014	316	1,305,563	.	.	167.8
2015	171	1,341,075	.	.	91.5
2016	236	1,351,375	.	.	127.5
2017	180	1,344,179	.	.	96.6
2018	198	1,382,801	.	.	108.7
2019	208	1,427,711	.	.	115.9
2020	286	1,420,859	.	.	166.0



**NOMINAL TAXABLE RETAIL SALES  
(million\$)**

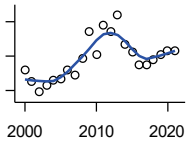
Kansas Department of Revenue

Year	County	State of Kansas	Non Metro Kansas	County Rank	Per 1000 or \$ Per Capita
2000	9.7	30,119.0	8,831.7	104	4.7
2001	8.3	30,202.2	8,700.3	105	3.9
2002	6.3	29,380.8	8,241.5	105	2.9
2003	8.0	30,694.0	8,710.6	105	3.8
2004	8.9	31,922.6	9,062.5	105	4.3
2005	9.4	32,924.2	9,386.6	105	4.6
2006	10.9	34,937.6	10,042.1	104	5.4
2007	11.3	36,180.1	10,553.2	104	5.8
2008	16.4	37,559.5	11,126.9	102	8.4
2009	12.2	35,211.8	10,351.5	104	6.3
2010	14.2	35,655.7	10,606.1	103	7.4
2011	16.3	37,257.0	11,153.5	102	8.3
2012	20.3	38,988.8	11,749.1	98	10.5
2013	16.6	40,009.0	11,993.8	102	8.6
2014	15.8	41,299.0	12,365.4	104	8.4
2015	12.7	41,635.8	11,747.6	105	6.8
2016	11.7	42,040.2	11,523.5	105	6.3
2017	12.3	41,940.1	11,449.9	105	6.6
2018	13.2	42,732.3	11,643.9	105	7.2
2019	14.9	43,732.5	12,062.7	103	8.3
2020	13.9	43,689.9	12,331.7	104	8.1
2021	15.5	48,532.8	13,413.0	103	9.1

County: county value. Kansas: state value. County Rank: highest county value ranked #1. (\$000): thousands of dollars. Nonmetro Kansas: Kansas total less Metropolitan Areas as defined by the Office of Management and Budget (OMB; released 3/6/2020). Per 1000: For nonmoney amounts, Per 1000=(county value / county population for the same year as the data) x 1000. \$ Per capita=(county value / county population for the same year as the data). Value= . indicates missing or suppressed data or value not calculated.

**Business**

RETAIL PULL FACTOR



Kansas Direct Program, Kansas State University Cooperative Extension Service (1980-1999); Kansas Department of Revenue (2000- )

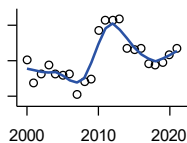
Year	County	State of Kansas	Non Metro Kansas	County Rank	Per 1000 or \$ Per Capita
2000	0.42	.	.	90	.
2001	0.35	.	.	97	.
2002	0.29	.	.	104	.
2003	0.33	.	.	101	.
2004	0.36	.	.	102	.
2005	0.37	.	.	99	.
2006	0.42	.	.	92	.
2007	0.39	.	.	98	.
2008	0.49	.	.	87	.
2009	0.64	.	.	74	.
2010	0.51	.	.	90	.
2011	0.68	.	.	69	.
2012	0.64	.	.	75	.
2013	0.74	.	.	62	.
2014	0.57	.	.	86	.
2015	0.52	.	.	91	.
2016	0.45	.	.	96	.
2017	0.45	.	.	96	.
2018	0.48	.	.	94	.
2019	0.51	.	.	92	.
2020	0.53	.	.	92	.
2021	0.53	.	.	91	.

County: county value. Kansas: state value. County Rank: highest county value ranked #1. (\$000): thousands of dollars. Nonmetro Kansas: Kansas total less Metropolitan Areas as defined by the Office of Management and Budget (OMB; released 3/6/2020). Per 1000: For nonmoney amounts, Per 1000=(county value / county population for the same year as the data) x 1000. \$ Per capita=(county value / county population for the same year as the data). Value= . indicates missing or suppressed data or value not calculated.

**Employment**

CIVILIAN LABOR FORCE (BLS-Place of Residence; 1990- )

U.S. Department of Labor, Bureau of Labor Statistics (BLS)



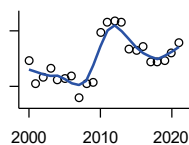
Year	County	State of Kansas	Non Metro Kansas	County Rank	Per 1000 or \$ Per Capita
2000	1,003	1,402,606	482,229	103	481.1
2001	939	1,398,521	475,280	103	443.3
2002	961	1,419,335	482,428	103	449.3
2003	989	1,441,065	490,161	103	466.1
2004	961	1,458,910	494,509	103	460.0
2005	960	1,458,767	490,047	103	471.1
2006	963	1,467,553	498,594	103	475.1
2007	904	1,485,414	497,048	104	461.5
2008	940	1,493,365	504,522	103	482.3
2009	950	1,512,572	516,311	103	492.5
2010	1,086	1,500,463	492,594	101	566.8
2011	1,115	1,498,000	492,563	100	569.7
2012	1,115	1,490,808	489,349	100	578.6
2013	1,118	1,489,395	485,484	100	581.1
2014	1,036	1,494,203	481,813	100	550.2
2015	1,030	1,493,782	477,546	101	551.1
2016	1,034	1,491,961	468,258	101	558.6
2017	992	1,488,346	461,063	101	532.5
2018	989	1,488,027	456,866	101	542.8
2019	994	1,497,517	455,858	101	554.1
2020	1,015	1,493,706	452,935	101	589.1
2021	1,036	1,495,665	453,398	101	605.8

County: county value. Kansas: state value. County Rank: highest county value ranked #1. (\$000): thousands of dollars. Nonmetro Kansas: Kansas total less Metropolitan Areas as defined by the Office of Management and Budget (OMB; released 3/6/2020). Per 1000: For nonmoney amounts, Per 1000=(county value / county population for the same year as the data) x 1000. \$ Per capita=(county value / county population for the same year as the data). Value= . indicates missing or suppressed data or value not calculated.

**Employment**

EMPLOYED (BLS-Place of Residence; 1990- )

U.S. Department of Labor, Bureau of Labor Statistics (BLS)

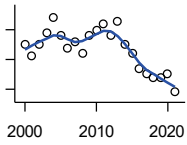


Year	County	State of Kansas	Non Metro Kansas	County Rank	Per 1000 or \$ Per Capita
2000	968	1,349,841	464,962	103	464.3
2001	908	1,338,775	455,154	103	428.7
2002	926	1,347,163	461,241	103	432.9
2003	950	1,361,115	467,622	103	447.7
2004	917	1,378,355	470,330	103	439.0
2005	922	1,384,654	467,722	103	452.4
2006	929	1,402,950	479,174	103	458.3
2007	868	1,422,109	477,983	104	443.1
2008	908	1,425,022	484,056	103	465.9
2009	912	1,408,142	485,797	103	472.8
2010	1,046	1,396,172	461,635	101	545.9
2011	1,073	1,402,198	463,723	100	548.3
2012	1,077	1,405,638	463,376	100	558.9
2013	1,075	1,410,470	461,405	100	558.7
2014	1,001	1,426,892	461,797	100	531.6
2015	998	1,431,533	457,899	101	534.0
2016	1,007	1,431,920	449,356	101	544.0
2017	967	1,434,516	445,003	101	519.1
2018	965	1,439,329	442,716	101	529.6
2019	970	1,450,705	442,108	101	540.7
2020	990	1,408,965	433,229	101	574.6
2021	1,017	1,447,323	441,159	101	594.7

County: county value. Kansas: state value. County Rank: highest county value ranked #1. (\$000): thousands of dollars. Nonmetro Kansas: Kansas total less Metropolitan Areas as defined by the Office of Management and Budget (OMB; released 3/6/2020). Per 1000: For nonmoney amounts, Per 1000=(county value / county population for the same year as the data) x 1000. \$ Per capita=(county value / county population for the same year as the data). Value= . indicates missing or suppressed data or value not calculated.

**Employment**

UNEMPLOYED (BLS-Place of Residence; 1990- )



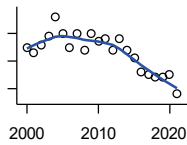
U.S. Department of Labor, Bureau of Labor Statistics (BLS)

Year	County	State of Kansas	Non Metro Kansas	County Rank	Per 1000 or \$ Per Capita
2000	35	52,765	17,267	99	16.8
2001	31	59,746	20,126	102	14.6
2002	35	72,172	21,187	101	16.4
2003	39	79,950	22,539	101	18.4
2004	44	80,555	24,179	101	21.1
2005	38	74,113	22,325	101	18.6
2006	34	64,603	19,420	101	16.8
2007	36	63,305	19,065	101	18.4
2008	32	68,343	20,466	104	16.4
2009	38	104,430	30,514	104	19.7
2010	40	104,291	30,959	104	20.9
2011	42	95,802	28,840	104	21.5
2012	38	85,170	25,973	102	19.7
2013	43	78,925	24,079	98	22.3
2014	35	67,311	20,016	99	18.6
2015	32	62,249	19,647	101	17.1
2016	27	60,041	18,902	102	14.6
2017	25	53,830	16,060	103	13.4
2018	24	48,698	14,150	101	13.2
2019	24	46,812	13,750	101	13.4
2020	25	84,741	19,706	99	14.5
2021	19	48,342	12,239	102	11.1

County: county value. Kansas: state value. County Rank: highest county value ranked #1. (\$000): thousands of dollars. Nonmetro Kansas: Kansas total less Metropolitan Areas as defined by the Office of Management and Budget (OMB; released 3/6/2020). Per 1000: For nonmoney amounts, Per 1000=(county value / county population for the same year as the data) x 1000. \$ Per capita=(county value / county population for the same year as the data). Value= . indicates missing or suppressed data or value not calculated.

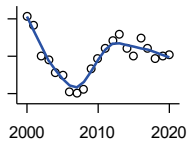
**Employment**

UNEMPLOYMENT RATE (BLS-Place of Residence; 1990- )



U.S. Department of Labor, Bureau of Labor Statistics (BLS)

Year	County	State of Kansas	Non Metro Kansas	County Rank	Per 1000 or \$ Per Capita
2000	3.5	3.8	3.6	45	.
2001	3.3	4.3	4.2	75	.
2002	3.6	5.1	4.4	68	.
2003	3.9	5.5	4.6	63	.
2004	4.6	5.5	4.9	51	.
2005	4.0	5.1	4.6	62	.
2006	3.5	4.4	3.9	61	.
2007	4.0	4.3	3.8	38	.
2008	3.4	4.6	4.1	70	.
2009	4.0	6.9	5.9	82	.
2010	3.7	7.0	6.3	96	.
2011	3.8	6.4	5.9	89	.
2012	3.4	5.7	5.3	93	.
2013	3.8	5.3	5.0	71	.
2014	3.4	4.5	4.2	67	.
2015	3.1	4.2	4.1	80	.
2016	2.6	4.0	4.0	96	.
2017	2.5	3.6	3.5	93	.
2018	2.4	3.3	3.1	85	.
2019	2.4	3.1	3.0	83	.
2020	2.5	5.7	4.4	92	.
2021	1.8	3.2	2.7	95	.



BEA EMPLOYMENT: TOTAL (Place of Work)

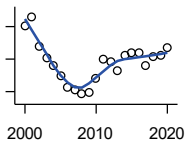
U.S. Bureau of Economic Analysis, Regional Economic Information System (REIS)

Year	County	State of Kansas	Non Metro Kansas	County Rank	Per 1000 or \$ Per Capita
2000	1,407	1,760,312	604,361	102	674.8
2001	1,383	1,767,601	592,672	102	653.0
2002	1,299	1,746,077	585,387	103	607.3
2003	1,291	1,733,694	577,860	102	608.4
2004	1,257	1,750,876	578,750	103	601.7
2005	1,250	1,765,650	577,562	103	613.3
2006	1,206	1,795,507	583,041	103	595.0
2007	1,201	1,844,355	591,924	103	613.1
2008	1,212	1,858,069	594,368	103	621.9
2009	1,268	1,813,184	580,972	103	657.3
2010	1,295	1,801,873	579,758	102	675.9
2011	1,320	1,819,044	583,725	102	674.5
2012	1,340	1,841,393	591,748	102	695.4
2013	1,360	1,869,054	597,236	102	706.9
2014	1,320	1,895,859	601,291	102	701.0
2015	1,299	1,910,954	598,589	103	695.0
2016	1,350	1,916,152	592,580	101	729.3
2017	1,321	1,914,179	584,337	101	709.1
2018	1,295	1,926,242	580,213	101	710.8
2019	1,301	1,925,204	574,496	101	725.2
2020	1,305	1,851,247	556,671	101	757.4

County: county value. Kansas: state value. County Rank: highest county value ranked #1. (\$000): thousands of dollars. Nonmetro Kansas: Kansas total less Metropolitan Areas as defined by the Office of Management and Budget (OMB; released 3/6/2020). Per 1000: For nonmoney amounts, Per 1000=(county value / county population for the same year as the data) x 1000. \$ Per capita=(county value / county population for the same year as the data). Value= . indicates missing or suppressed data or value not calculated.

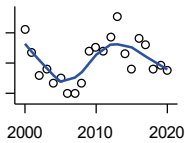
**Employment**

**BEA EMPLOYMENT: FARM**



U.S. Bureau of Economic Analysis,  
Regional Economic Information System  
(REIS)

Year	County	State of Kansas	Non Metro Kansas	County Rank	Per 1000 or \$ Per Capita
2000	501	77,477	59,088	84	240.3
2001	515	78,177	59,647	83	243.2
2002	470	70,532	53,893	82	219.7
2003	451	68,516	52,099	84	212.5
2004	440	67,586	51,246	82	210.6
2005	424	66,829	50,386	83	208.0
2006	406	64,910	48,728	83	200.3
2007	402	65,639	49,037	83	205.2
2008	396	63,820	47,682	82	203.2
2009	399	62,798	46,960	81	206.8
2010	420	63,882	47,984	77	219.2
2011	450	65,761	49,707	73	229.9
2012	446	63,753	48,167	69	231.4
2013	433	62,739	47,255	69	225.1
2014	455	64,308	48,722	70	241.6
2015	460	64,416	48,927	71	246.1
2016	459	63,840	48,539	72	248.0
2017	441	61,876	46,936	71	236.7
2018	454	63,233	48,069	72	249.2
2019	455	63,300	48,167	72	253.6
2020	467	64,281	49,038	72	271.0



**BEA EMPLOYMENT: NON-FARM**

U.S. Bureau of Economic Analysis,  
Regional Economic Information System  
(REIS)

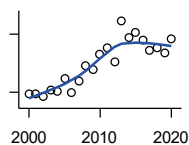
Year	County	State of Kansas	Non Metro Kansas	County Rank	Per 1000 or \$ Per Capita
2000	906	1,682,835	545,273	103	434.5
2001	868	1,689,424	533,025	103	409.8
2002	829	1,675,545	531,494	104	387.6
2003	840	1,665,178	525,761	103	395.9
2004	817	1,683,290	527,504	103	391.1
2005	826	1,698,821	527,176	103	405.3
2006	800	1,730,597	534,313	104	394.7
2007	799	1,778,716	542,887	105	407.9
2008	816	1,794,249	546,686	103	418.7
2009	869	1,750,386	534,012	103	450.5
2010	875	1,737,991	531,774	103	456.7
2011	870	1,753,283	534,018	103	444.6
2012	894	1,777,640	543,581	103	463.9
2013	927	1,806,315	549,981	103	481.8
2014	865	1,831,551	552,569	105	459.4
2015	839	1,846,538	549,662	105	448.9
2016	891	1,852,312	544,041	105	481.4
2017	880	1,852,303	537,401	105	472.4
2018	841	1,863,009	532,144	105	461.6
2019	846	1,861,904	526,329	105	471.6
2020	838	1,786,966	507,633	105	486.4

County: county value. Kansas: state value. County Rank: highest county value ranked #1. (\$000): thousands of dollars. Nonmetro Kansas: Kansas total less Metropolitan Areas as defined by the Office of Management and Budget (OMB; released 3/6/2020). Per 1000: For nonmoney amounts, Per 1000=(county value / county population for the same year as the data) x 1000. \$ Per capita=(county value / county population for the same year as the data). Value= . indicates missing or suppressed data or value not calculated.



**Employment**

**AVERAGE WAGE PER JOB (\$)**



U.S. Bureau of Economic Analysis,  
Regional Economic Information System  
(REIS)

Year	County	State of Kansas	Non Metro Kansas	County Rank	Per 1000 or \$ Per Capita
2000	18,949	31,854	24,396	75	.
2001	18,974	32,859	26,379	96	.
2002	18,142	33,707	26,331	96	.
2003	21,356	35,078	28,911	98	.
2004	20,225	35,932	29,747	99	.
2005	27,054	37,467	31,646	76	.
2006	19,481	40,038	31,993	101	.
2007	25,934	41,500	33,484	92	.
2008	33,838	44,197	36,256	57	.
2009	31,662	43,860	35,739	72	.
2010	39,886	45,370	38,631	39	.
2011	42,832	48,280	42,324	51	.
2012	35,852	50,549	42,015	77	.
2013	56,884	52,629	46,073	27	.
2014	48,040	51,959	43,562	28	.
2015	50,953	52,250	42,320	21	.
2016	47,059	51,664	41,964	25	.
2017	41,570	53,007	42,137	48	.
2018	42,937	54,790	44,514	45	.
2019	40,315	56,956	45,336	68	.
2020	47,477	60,597	49,183	45	.

**BEA EMPLOYMENT: FORESTRY, FISHING, HUNTING, AND AG SUPPORT**

U.S. Bureau of Economic Analysis,  
Regional Economic Information System  
(REIS)

Year	County	State of Kansas	Non Metro Kansas	County Rank	Per 1000 or \$ Per Capita
2001	.	7,059	.	.	.
2002	.	8,045	.	.	.
2003	.	7,313	.	.	.
2004	.	7,623	.	.	.
2005	.	7,962	.	.	.
2006	.	7,748	.	.	.
2007	.	8,228	.	.	.
2008	.	8,646	.	.	.
2009	.	8,982	.	.	.
2010	.	9,251	.	.	.
2011	.	9,410	.	.	.
2012	.	9,691	.	.	.
2013	.	10,014	.	.	.
2014	.	10,708	.	.	.
2015	.	10,020	.	.	.
2016	.	10,383	.	.	.

County: county value. Kansas: state value. County Rank: highest county value ranked #1. (\$000): thousands of dollars. Nonmetro Kansas: Kansas total less Metropolitan Areas as defined by the Office of Management and Budget (OMB; released 3/6/2020). Per 1000: For nonmoney amounts, Per 1000=(county value / county population for the same year as the data) x 1000. \$ Per capita=(county value / county population for the same year as the data). Value= . indicates missing or suppressed data or value not calculated.

## Employment

## BEA EMPLOYMENT: MINING

Year	County	State of Kansas	Non Metro Kansas	County Rank	Per 1000 or \$ Per Capita
2001	.	19,592	.	.	.
2002	.	17,635	.	.	.
2003	.	19,869	.	.	.
2004	.	18,466	.	.	.
2005	.	19,489	.	.	.
2006	.	22,403	.	.	.
2007	.	24,043	.	.	.
2008	.	31,467	.	.	.
2009	.	29,941	.	.	.
2010	.	36,124	.	.	.
2011	.	31,658	.	.	.
2012	.	42,405	.	.	.
2013	.	46,585	.	.	.
2014	.	45,526	.	.	.
2015	.	46,460	.	.	.
2016	.	48,555	.	.	.

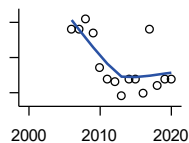
## BEA EMPLOYMENT: UTILITIES

Year	County	State of Kansas	Non Metro Kansas	County Rank	Per 1000 or \$ Per Capita
2001	.	7,608	.	.	.
2002	.	7,087	.	.	.
2003	.	7,253	.	.	.
2004	.	7,356	.	.	.
2005	.	7,447	.	.	.
2006	.	7,478	.	.	.
2007	.	7,584	.	.	.
2008	.	7,855	.	.	.
2009	.	7,941	.	.	.
2010	.	8,028	.	.	.
2011	.	8,213	.	.	.
2012	.	8,155	.	.	.
2013	.	7,949	.	.	.
2014	.	7,985	.	.	.
2015	.	7,040	.	.	.
2016	.	7,133	.	.	.

County: county value. Kansas: state value. County Rank: highest county value ranked #1. (\$000): thousands of dollars. Nonmetro Kansas: Kansas total less Metropolitan Areas as defined by the Office of Management and Budget (OMB; released 3/6/2020). Per 1000: For nonmoney amounts, Per 1000=(county value / county population for the same year as the data) x 1000. \$ Per capita=(county value / county population for the same year as the data). Value= . indicates missing or suppressed data or value not calculated.

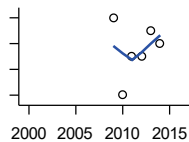
**Employment**

**BEA EMPLOYMENT:  
CONSTRUCTION**



U.S. Bureau of Economic Analysis,  
Regional Economic Information System  
(REIS)

Year	County	State of Kansas	Non Metro Kansas	County Rank	Per 1000 or \$ Per Capita
2001	.	92,647	27,972	.	.
2002	.	90,370	.	.	.
2003	.	91,725	26,681	.	.
2004	.	93,271	.	.	.
2005	.	94,836	.	.	.
2006	33	97,449	.	80	.
2007	33	99,119	29,179	86	.
2008	36	97,741	.	86	.
2009	32	90,165	28,077	86	.
2010	22	84,708	26,402	88	.
2011	19	83,332	25,999	86	.
2012	18	85,966	.	86	.
2013	14	88,094	.	88	.
2014	19	91,143	.	88	.
2015	19	91,458	27,583	90	.
2016	15	93,539	27,151	87	.
2017	33	92,046	25,579	86	.
2018	17	92,985	25,530	88	.
2019	19	94,858	25,701	89	.
2020	19	94,186	26,085	87	.



**BEA EMPLOYMENT:  
MANUFACTURING**

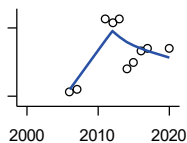
U.S. Bureau of Economic Analysis,  
Regional Economic Information System  
(REIS)

Year	County	State of Kansas	Non Metro Kansas	County Rank	Per 1000 or \$ Per Capita
2001	.	199,980	73,170	.	.
2002	.	188,905	70,691	.	.
2003	.	179,013	68,418	.	.
2004	.	181,738	69,669	.	.
2005	.	185,459	71,072	.	.
2006	.	188,047	71,704	.	.
2007	.	192,930	73,488	.	.
2008	.	193,116	72,235	.	.
2009	20	173,854	64,961	87	.
2010	14	166,000	62,884	89	.
2011	17	167,302	64,361	86	.
2012	17	169,308	65,944	86	.
2013	19	170,113	67,251	86	.
2014	18	169,307	68,299	85	.
2015	.	168,324	66,978	.	.
2016	.	167,723	65,796	.	.

County: county value. Kansas: state value. County Rank: highest county value ranked #1. (\$000): thousands of dollars. Nonmetro Kansas: Kansas total less Metropolitan Areas as defined by the Office of Management and Budget (OMB; released 3/6/2020). Per 1000: For nonmoney amounts, Per 1000=(county value / county population for the same year as the data) x 1000. \$ Per capita=(county value / county population for the same year as the data). Value= . indicates missing or suppressed data or value not calculated.

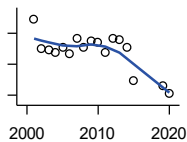
**Employment**

**BEA EMPLOYMENT: WHOLESALE TRADE**



U.S. Bureau of Economic Analysis, Regional Economic Information System (REIS)

Year	County	State of Kansas	Non Metro Kansas	County Rank	Per 1000 or \$ Per Capita
2001	.	65,698	.	.	.
2002	.	65,408	.	.	.
2003	.	63,504	.	.	.
2004	.	64,434	.	.	.
2005	.	64,587	.	.	.
2006	32	64,743	.	82	.
2007	33	65,993	.	80	.
2008	.	67,693	.	.	.
2009	.	65,954	.	.	.
2010	.	64,376	.	.	.
2011	64	64,712	.	79	.
2012	62	63,973	.	76	.
2013	64	64,999	.	74	.
2014	42	69,295	.	77	.
2015	45	68,444	.	81	.
2016	50	64,843	.	79	.
2017	51	65,014	.	78	.
2020	51	60,844	.	81	.



**BEA EMPLOYMENT: RETAIL TRADE**

U.S. Bureau of Economic Analysis, Regional Economic Information System (REIS)

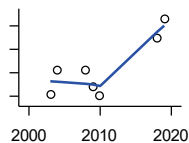
Year	County	State of Kansas	Non Metro Kansas	County Rank	Per 1000 or \$ Per Capita
2001	109	198,069	.	98	.
2002	90	196,112	.	103	.
2003	89	194,545	64,173	105	.
2004	88	192,957	63,265	104	.
2005	91	191,656	62,506	104	.
2006	87	190,391	62,082	102	.
2007	97	190,643	61,716	98	.
2008	91	185,907	59,783	100	.
2009	95	181,262	58,714	100	.
2010	94	177,858	57,470	99	.
2011	88	180,548	57,734	100	.
2012	97	180,596	57,349	98	.
2013	96	183,245	57,556	98	.
2014	91	185,899	57,855	99	.
2015	69	188,421	58,516	103	.
2016	.	188,505	57,864	.	.
2019	66	177,240	53,427	103	.
2020	61	171,777	52,563	103	.

County: county value. Kansas: state value. County Rank: highest county value ranked #1. (\$000): thousands of dollars. Nonmetro Kansas: Kansas total less Metropolitan Areas as defined by the Office of Management and Budget (OMB; released 3/6/2020). Per 1000: For nonmoney amounts, Per 1000=(county value / county population for the same year as the data) x 1000. \$ Per capita=(county value / county population for the same year as the data). Value= . indicates missing or suppressed data or value not calculated.

**Employment**

**BEA EMPLOYMENT:  
TRANSPORTATION AND  
WAREHOUSING**

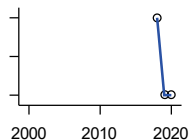
U.S. Bureau of Economic Analysis,  
Regional Economic Information System  
(REIS)



Year	County	State of Kansas	Non Metro Kansas	County Rank	Per 1000 or \$ Per Capita
2001	.	56,302	.	.	.
2002	.	55,319	.	.	.
2003	21	55,509	.	47	.
2004	31	55,479	.	45	.
2005	.	56,287	.	.	.
2006	.	57,506	.	.	.
2007	.	59,277	.	.	.
2008	31	58,725	.	45	.
2009	24	56,238	.	47	.
2010	20	55,179	.	42	.
2011	.	57,449	.	.	.
2012	.	59,756	.	.	.
2013	.	59,780	.	.	.
2014	.	60,565	.	.	.
2015	.	63,256	.	.	.
2016	.	65,705	.	.	.
2018	45	75,308	.	45	.
2019	53	81,209	.	46	.

**BEA EMPLOYMENT: INFORMATION**

U.S. Bureau of Economic Analysis,  
Regional Economic Information System  
(REIS)

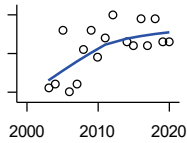


Year	County	State of Kansas	Non Metro Kansas	County Rank	Per 1000 or \$ Per Capita
2001	.	54,895	.	.	.
2002	.	50,728	.	.	.
2003	.	48,328	6,860	.	.
2004	.	45,617	.	.	.
2005	.	43,840	.	.	.
2006	.	43,925	.	.	.
2007	.	45,115	.	.	.
2008	.	42,958	.	.	.
2009	.	38,677	.	.	.
2010	.	33,432	.	.	.
2011	.	32,160	.	.	.
2012	.	31,829	.	.	.
2013	.	31,737	.	.	.
2014	.	32,316	.	.	.
2015	.	25,282	.	.	.
2016	.	24,998	.	.	.
2018	7	23,165	.	62	.
2019	5	22,078	.	68	.
2020	5	20,810	.	67	.

County: county value. Kansas: state value. County Rank: highest county value ranked #1. (\$000): thousands of dollars. Nonmetro Kansas: Kansas total less Metropolitan Areas as defined by the Office of Management and Budget (OMB; released 3/6/2020). Per 1000: For nonmoney amounts, Per 1000=(county value / county population for the same year as the data) x 1000. \$ Per capita=(county value / county population for the same year as the data). Value= . indicates missing or suppressed data or value not calculated.

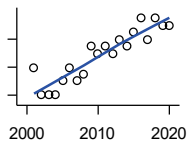
**Employment**

**BEA EMPLOYMENT: FINANCE AND INSURANCE**



U.S. Bureau of Economic Analysis,  
Regional Economic Information System  
(REIS)

Year	County	State of Kansas	Non Metro Kansas	County Rank	Per 1000 or \$ Per Capita
2001	.	76,118	.	.	.
2002	.	78,206	.	.	.
2003	46	78,441	.	73	.
2004	47	78,350	.	73	.
2005	61	78,952	.	63	.
2006	45	80,900	.	70	.
2007	47	86,094	.	73	.
2008	56	89,590	.	67	.
2009	61	93,573	.	70	.
2010	54	92,428	.	71	.
2011	59	99,495	.	67	.
2012	65	98,640	.	67	.
2013	.	99,998	.	.	.
2014	58	98,209	.	75	.
2015	57	100,534	.	70	.
2016	64	102,699	.	69	.
2017	57	101,563	.	73	.
2018	64	102,816	.	70	.
2019	58	100,276	.	74	.
2020	58	101,626	.	73	.



**BEA EMPLOYMENT: REAL ESTATE, RENTAL, AND LEASING**

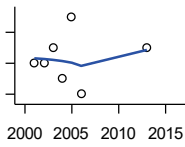
U.S. Bureau of Economic Analysis,  
Regional Economic Information System  
(REIS)

Year	County	State of Kansas	Non Metro Kansas	County Rank	Per 1000 or \$ Per Capita
2001	16	45,237	.	77	.
2002	12	44,970	.	76	.
2003	12	47,095	.	78	.
2004	12	50,181	.	78	.
2005	14	53,335	.	70	.
2006	16	55,342	.	69	.
2007	14	57,694	.	74	.
2008	15	57,933	.	70	.
2009	19	57,132	.	68	.
2010	18	59,578	.	73	.
2011	19	61,821	.	70	.
2012	18	60,432	.	70	.
2013	20	62,134	.	73	.
2014	19	64,705	.	76	.
2015	21	66,604	.	69	.
2016	23	68,395	.	67	.
2017	20	70,304	.	74	.
2018	23	72,631	.	72	.
2019	22	69,119	.	73	.
2020	22	68,452	.	73	.

County: county value. Kansas: state value. County Rank: highest county value ranked #1. (\$000): thousands of dollars. Nonmetro Kansas: Kansas total less Metropolitan Areas as defined by the Office of Management and Budget (OMB; released 3/6/2020). Per 1000: For nonmoney amounts, Per 1000=(county value / county population for the same year as the data) x 1000. \$ Per capita=(county value / county population for the same year as the data). Value= . indicates missing or suppressed data or value not calculated.

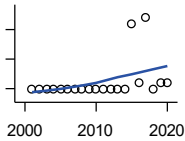
**Employment**

**BEA EMPLOYMENT: PROFESSIONAL AND TECHNICAL SERVICES**



U.S. Bureau of Economic Analysis,  
Regional Economic Information System  
(REIS)

Year	County	State of Kansas	Non Metro Kansas	County Rank	Per 1000 or \$ Per Capita
2001	19	81,396	.	79	.
2002	19	80,684	.	74	.
2003	20	80,311	.	71	.
2004	18	85,550	.	71	.
2005	22	85,003	.	75	.
2006	17	87,381	.	80	.
2007	.	92,717	.	.	.
2008	.	95,362	.	.	.
2009	.	93,232	.	.	.
2010	.	93,037	.	.	.
2011	.	93,237	.	.	.
2012	.	95,360	.	.	.
2013	20	100,795	.	83	.
2014	.	102,210	.	.	.
2015	.	105,625	.	.	.
2016	.	108,059	.	.	.



**BEA EMPLOYMENT: MANAGEMENT OF COMPANIES AND ENTERPRISES**

U.S. Bureau of Economic Analysis,  
Regional Economic Information System  
(REIS)

Year	County	State of Kansas	Non Metro Kansas	County Rank	Per 1000 or \$ Per Capita
2001	0	13,832	.	70	.
2002	0	12,576	.	69	.
2003	0	11,135	.	67	.
2004	0	10,614	.	67	.
2005	0	11,811	.	66	.
2006	0	13,061	.	66	.
2007	0	13,398	.	69	.
2008	0	15,234	.	72	.
2009	0	14,849	.	75	.
2010	0	16,579	.	75	.
2011	0	15,343	.	75	.
2012	0	15,075	.	82	.
2013	0	16,667	.	81	.
2014	0	20,441	.	79	.
2015	11	29,604	.	36	.
2016	1	27,824	.	40	.
2017	12	27,767	.	35	.
2018	0	28,862	.	75	.
2019	1	30,512	.	34	.
2020	1	25,648	.	36	.

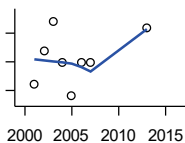
County: county value. Kansas: state value. County Rank: highest county value ranked #1. (\$000): thousands of dollars. Nonmetro Kansas: Kansas total less Metropolitan Areas as defined by the Office of Management and Budget (OMB; released 3/6/2020). Per 1000: For nonmoney amounts, Per 1000=(county value / county population for the same year as the data) x 1000. \$ Per capita=(county value / county population for the same year as the data). Value= . indicates missing or suppressed data or value not calculated.

**Employment**

**BEA EMPLOYMENT:  
ADMINISTRATIVE AND WASTE  
SERVICES**

U.S. Bureau of Economic Analysis,  
Regional Economic Information System  
(REIS)

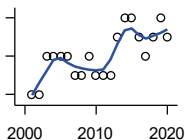
Year	County	State of Kansas	Non Metro Kansas	County Rank	Per 1000 or \$ Per Capita
2001	16	81,573	.	55	.
2002	22	82,992	.	51	.
2003	27	81,298	.	50	.
2004	20	85,721	.	54	.
2005	14	89,933	.	55	.
2006	20	93,688	.	55	.
2007	20	98,865	.	56	.
2008	.	97,440	.	.	.
2009	.	92,455	.	.	.
2010	.	93,675	.	.	.
2011	.	97,969	.	.	.
2012	.	100,490	.	.	.
2013	26	104,680	.	65	.
2014	.	107,218	18,836	.	.
2015	.	103,436	18,767	.	.
2016	.	103,233	18,428	.	.



**BEA EMPLOYMENT: EDUCATIONAL  
SERVICES**

U.S. Bureau of Economic Analysis,  
Regional Economic Information System  
(REIS)

Year	County	State of Kansas	Non Metro Kansas	County Rank	Per 1000 or \$ Per Capita
2001	4	21,169	.	74	.
2002	4	22,173	.	75	.
2003	6	22,651	.	75	.
2004	6	21,601	.	74	.
2005	6	22,177	.	76	.
2006	6	22,438	.	74	.
2007	5	23,647	.	70	.
2008	5	24,653	.	70	.
2009	6	25,120	.	61	.
2010	5	26,071	.	67	.
2011	5	26,080	.	66	.
2012	5	26,625	.	65	.
2013	7	27,508	.	66	.
2014	8	28,708	.	65	.
2015	8	28,794	.	65	.
2016	7	27,996	.	61	.
2017	6	28,459	.	56	.
2018	7	28,560	.	64	.
2019	8	29,586	.	64	.
2020	7	27,508	.	64	.

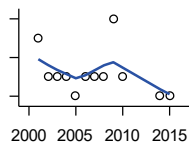


County: county value. Kansas: state value. County Rank: highest county value ranked #1. (\$000): thousands of dollars. Nonmetro Kansas: Kansas total less Metropolitan Areas as defined by the Office of Management and Budget (OMB; released 3/6/2020). Per 1000: For nonmoney amounts, Per 1000=(county value / county population for the same year as the data) x 1000. \$ Per capita=(county value / county population for the same year as the data). Value= . indicates missing or suppressed data or value not calculated.



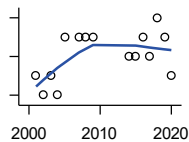
**Employment**

**BEA EMPLOYMENT: HEALTH CARE AND SOCIAL ASSISTANCE**



U.S. Bureau of Economic Analysis, Regional Economic Information System (REIS)

Year	County	State of Kansas	Non Metro Kansas	County Rank	Per 1000 or \$ Per Capita
2001	13	165,415	.	60	.
2002	11	168,198	.	65	.
2003	11	169,654	.	65	.
2004	11	172,796	.	69	.
2005	10	173,949	.	65	.
2006	11	176,919	.	60	.
2007	11	182,160	.	54	.
2008	11	186,051	.	56	.
2009	14	188,499	.	54	.
2010	11	188,383	.	55	.
2011	.	190,736	.	.	.
2012	.	192,991	.	.	.
2013	.	193,687	.	.	.
2014	10	194,632	.	55	.
2015	10	199,724	.	53	.
2016	.	201,830	.	.	.



**BEA EMPLOYMENT: ARTS, ENTERTAINMENT, AND RECREATION**

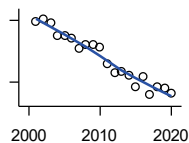
U.S. Bureau of Economic Analysis, Regional Economic Information System (REIS)

Year	County	State of Kansas	Non Metro Kansas	County Rank	Per 1000 or \$ Per Capita
2001	9	25,012	.	65	.
2002	8	25,668	.	67	.
2003	9	24,116	.	66	.
2004	8	25,355	.	69	.
2005	11	26,067	.	65	.
2006	.	26,505	.	.	.
2007	11	27,489	.	62	.
2008	11	27,501	.	66	.
2009	11	27,203	.	69	.
2010	.	27,479	.	.	.
2011	.	28,487	.	.	.
2012	.	30,729	.	.	.
2013	.	31,068	.	.	.
2014	10	32,154	.	64	.
2015	10	31,169	.	61	.
2016	11	32,373	.	60	.
2017	10	33,213	.	59	.
2018	12	33,837	.	56	.
2019	11	33,082	.	59	.
2020	9	26,644	.	55	.

County: county value. Kansas: state value. County Rank: highest county value ranked #1. (\$000): thousands of dollars. Nonmetro Kansas: Kansas total less Metropolitan Areas as defined by the Office of Management and Budget (OMB; released 3/6/2020). Per 1000: For nonmoney amounts, Per 1000=(county value / county population for the same year as the data) x 1000. \$ Per capita=(county value / county population for the same year as the data). Value= . indicates missing or suppressed data or value not calculated.

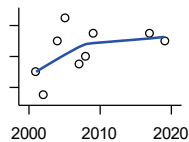
**Employment**

**BEA EMPLOYMENT: GOVERNMENT AND GOVERNMENT ENTERPRISES**



U.S. Bureau of Economic Analysis, Regional Economic Information System (REIS)

Year	County	State of Kansas	Non Metro Kansas	County Rank	Per 1000 or \$ Per Capita
2001	359	282,293	102,993	93	.
2002	361	281,427	103,581	93	.
2003	358	282,459	103,389	93	.
2004	345	283,877	103,946	95	.
2005	345	282,798	103,194	94	.
2006	343	288,372	104,103	93	.
2007	333	294,413	104,598	95	.
2008	337	298,580	104,718	94	.
2009	337	300,422	104,081	93	.
2010	334	303,875	103,382	94	.
2011	318	299,952	101,535	94	.
2012	309	298,068	101,180	94	.
2013	311	297,689	101,232	94	.
2014	307	296,956	100,634	95	.
2015	295	295,799	99,719	96	.
2016	305	291,536	98,520	95	.
2017	288	295,748	99,542	95	.
2018	295	298,105	99,499	94	.
2019	294	302,017	100,227	95	.
2020	289	292,583	96,477	94	.



**BEA EMPLOYMENT: ACCOMMODATION AND FOOD SERVICES**

U.S. Bureau of Economic Analysis, Regional Economic Information System (REIS)

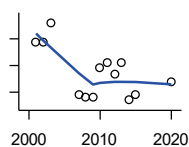
Year	County	State of Kansas	Non Metro Kansas	County Rank	Per 1000 or \$ Per Capita
2001	20	103,353	.	66	.
2002	17	103,692	.	66	.
2003	.	105,138	.	.	.
2004	24	106,694	.	68	.
2005	27	107,303	.	67	.
2006	.	109,888	.	.	.
2007	21	110,863	.	66	.
2008	22	111,092	.	67	.
2009	25	109,353	.	71	.
2010	.	108,628	.	.	.
2011	.	110,514	.	.	.
2012	.	112,574	.	.	.
2013	.	114,102	.	.	.
2014	.	115,768	.	.	.
2015	.	118,503	.	.	.
2016	.	119,764	.	.	.
2017	25	121,181	.	58	.
2019	24	122,819	.	62	.

County: county value. Kansas: state value. County Rank: highest county value ranked #1. (\$000): thousands of dollars. Nonmetro Kansas: Kansas total less Metropolitan Areas as defined by the Office of Management and Budget (OMB; released 3/6/2020). Per 1000: For nonmoney amounts, Per 1000=(county value / county population for the same year as the data) x 1000. \$ Per capita=(county value / county population for the same year as the data). Value= . indicates missing or suppressed data or value not calculated.

**Employment**

BEA EMPLOYMENT: OTHER SERVICES, EXCEPT PUBLIC ADMINISTRATION

U.S. Bureau of Economic Analysis, Regional Economic Information System (REIS)

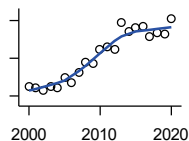


Year	County	State of Kansas	Non Metro Kansas	County Rank	Per 1000 or \$ Per Capita
2001	69	92,176	.	91	.
2002	69	95,350	.	91	.
2003	76	95,821	32,629	91	.
2004	.	95,610	.	.	.
2005	.	95,930	32,555	.	.
2006	.	96,413	.	.	.
2007	49	98,444	.	91	.
2008	48	96,705	.	86	.
2009	48	95,534	.	86	.
2010	59	93,302	.	84	.
2011	61	94,865	.	83	.
2012	57	94,977	.	81	.
2013	61	95,471	.	84	.
2014	47	97,806	.	85	.
2015	49	98,041	.	79	.
2016	.	97,219	.	.	.
2020	54	92,245	.	75	.

**Income**

BEA PER CAPITA PERSONAL INCOME (\$)

U.S. Bureau of Economic Analysis, Regional Economic Information System (REIS)

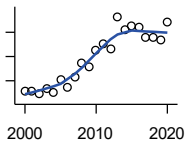


Year	County	State of Kansas	Non Metro Kansas	County Rank	Per 1000 or \$ Per Capita
2000	25,026	28,253	23,116	31	.
2001	24,411	29,112	24,576	69	.
2002	22,856	29,248	24,314	78	.
2003	24,967	30,074	26,017	78	.
2004	24,123	30,843	26,583	90	.
2005	29,879	32,545	28,356	52	.
2006	26,863	35,690	29,782	87	.
2007	32,236	38,057	32,034	60	.
2008	38,206	41,257	35,211	44	.
2009	37,249	39,431	33,876	32	.
2010	44,363	39,960	35,795	20	.
2011	46,194	43,015	39,041	34	.
2012	44,949	45,294	39,660	40	.
2013	58,634	46,174	41,747	18	.
2014	54,345	47,013	41,042	15	.
2015	56,397	47,332	40,638	11	.
2016	56,599	47,326	40,797	11	.
2017	51,539	48,756	41,314	14	.
2018	53,439	50,811	43,283	15	.
2019	53,124	52,820	44,491	18	.
2020	61,030	55,677	48,415	13	.

County: county value. Kansas: state value. County Rank: highest county value ranked #1. (\$000): thousands of dollars. Nonmetro Kansas: Kansas total less Metropolitan Areas as defined by the Office of Management and Budget (OMB; released 3/6/2020). Per 1000: For nonmoney amounts, Per 1000=(county value / county population for the same year as the data) x 1000. \$ Per capita=(county value / county population for the same year as the data). Value= . indicates missing or suppressed data or value not calculated.

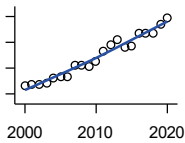
**Income**

**SOURCES OF PERSONAL INCOME:  
TOTAL PERSONAL INCOME (\$000)**



U.S. Bureau of Economic Analysis,  
Regional Economic Information System  
(REIS)

Year	County	State of Kansas	Non Metro Kansas	County Rank	Per 1000 or \$ Per Capita
2000	51,854	76,105,125	22,273,838	102	24,870.0
2001	51,702	78,664,651	23,411,174	103	24,410.8
2002	48,888	79,365,190	23,000,314	103	22,855.5
2003	52,981	81,890,340	24,494,191	104	24,967.5
2004	50,393	84,335,940	24,924,467	102	24,123.0
2005	60,893	89,346,228	26,452,291	102	29,878.8
2006	54,451	98,610,188	27,661,596	103	26,862.9
2007	63,151	105,943,199	29,715,946	102	32,236.3
2008	74,464	115,852,478	32,614,565	103	38,206.3
2009	71,853	111,697,350	31,394,702	102	37,248.8
2010	85,177	114,239,828	33,291,419	101	44,455.6
2011	90,401	123,558,772	36,221,488	102	46,193.7
2012	86,616	130,948,127	36,696,759	103	44,948.6
2013	112,754	133,979,908	38,513,959	100	58,604.0
2014	102,277	136,878,718	37,680,598	101	54,316.0
2015	105,349	138,336,768	37,081,851	99	56,366.5
2016	104,198	138,533,890	36,930,885	99	56,292.8
2017	95,760	142,729,689	37,104,963	101	51,401.0
2018	96,137	148,955,739	38,589,364	102	52,764.5
2019	93,657	154,961,001	39,424,148	102	52,205.7
2020	108,573	163,462,179	42,618,591	101	63,013.9



**SOURCES OF PERSONAL INCOME:  
WAGES AND SALARIES (\$000)**

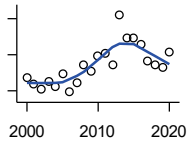
U.S. Bureau of Economic Analysis,  
Regional Economic Information System  
(REIS)

Year	County	State of Kansas	Non Metro Kansas	County Rank	Per 1000 or \$ Per Capita
2000	13,307	41,766,878	10,254,250	103	6,382.3
2001	13,556	43,269,734	10,518,206	103	6,400.4
2002	13,507	43,875,159	10,696,876	103	6,314.6
2003	13,748	44,488,560	10,894,971	104	6,478.8
2004	14,421	46,702,068	11,333,617	104	6,903.3
2005	14,734	48,537,956	11,614,130	104	7,229.6
2006	14,589	52,083,584	12,299,340	104	7,197.3
2007	16,522	55,442,368	13,093,908	104	8,433.9
2008	16,463	57,623,385	13,647,143	104	8,446.9
2009	16,151	55,605,578	13,199,674	105	8,372.7
2010	16,970	56,089,711	13,345,291	104	8,857.0
2011	18,561	58,104,706	13,856,458	102	9,484.4
2012	19,713	60,616,457	14,473,599	102	10,229.9
2013	20,341	61,872,023	14,781,792	103	10,572.2
2014	19,178	64,457,652	15,385,500	105	10,184.8
2015	19,402	66,729,598	15,454,485	105	10,381.0
2016	21,336	67,253,399	15,422,058	104	11,526.7
2017	21,339	68,830,861	15,731,853	103	11,454.1
2018	21,379	71,580,544	16,311,725	103	11,733.8
2019	22,780	74,404,771	16,882,299	103	12,697.9
2020	23,836	75,798,310	17,251,300	102	13,834.0

County: county value. Kansas: state value. County Rank: highest county value ranked #1. (\$000): thousands of dollars. Nonmetro Kansas: Kansas total less Metropolitan Areas as defined by the Office of Management and Budget (OMB; released 3/6/2020). Per 1000: For nonmoney amounts, Per 1000=(county value / county population for the same year as the data) x 1000. \$ Per capita=(county value / county population for the same year as the data). Value= . indicates missing or suppressed data or value not calculated.

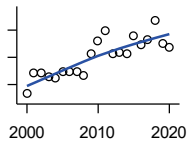
**Income**

**SOURCES OF PERSONAL INCOME:  
PROPRIETORS-FARM (\$000)**



U.S. Bureau of Economic Analysis,  
Regional Economic Information System  
(REIS)

Year	County	State of Kansas	Non Metro Kansas	County Rank	Per 1000 or \$ Per Capita
2000	7,452	668,539	673,707	39	3,574.1
2001	3,619	779,473	769,336	68	1,708.7
2002	843	145,064	187,033	51	394.1
2003	5,094	1,281,076	1,195,298	79	2,400.6
2004	2,316	1,149,425	938,524	87	1,108.7
2005	9,149	1,609,604	1,469,139	65	4,489.2
2006	-793	766,047	663,735	84	-391.2
2007	4,409	1,131,607	1,040,350	77	2,250.6
2008	14,411	1,582,092	1,404,900	59	7,394.0
2009	11,043	1,585,995	1,390,349	60	5,724.7
2010	19,460	2,149,482	2,029,067	46	10,156.6
2011	20,746	3,188,519	2,989,880	53	10,600.9
2012	14,271	2,519,555	2,296,875	69	7,405.8
2013	42,137	4,499,190	4,158,419	42	21,900.7
2014	29,565	2,231,181	2,157,992	24	15,701.0
2015	29,514	1,300,733	1,294,370	17	15,791.3
2016	26,009	1,577,060	1,564,511	19	14,051.3
2017	16,630	838,480	838,290	21	8,926.5
2018	14,588	1,050,662	971,690	28	8,006.6
2019	13,318	998,038	878,247	34	7,423.6
2020	21,792	2,151,349	1,887,881	39	12,647.7



**SOURCES OF PERSONAL INCOME:  
PROPRIETORS-NONFARM (\$000)**

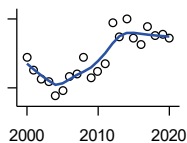
U.S. Bureau of Economic Analysis,  
Regional Economic Information System  
(REIS)

Year	County	State of Kansas	Non Metro Kansas	County Rank	Per 1000 or \$ Per Capita
2000	2,625	4,580,476	1,493,470	104	1,259.0
2001	5,675	4,510,530	1,855,621	95	2,679.4
2002	5,752	5,036,100	1,966,784	96	2,689.1
2003	5,197	4,719,377	1,916,735	98	2,449.1
2004	4,916	4,003,922	2,073,898	98	2,353.3
2005	5,968	4,455,294	2,200,971	93	2,928.4
2006	5,917	7,343,524	2,694,895	100	2,919.1
2007	5,881	7,280,197	2,436,574	97	3,002.0
2008	5,238	9,255,953	2,971,923	99	2,687.5
2009	8,453	9,323,551	2,858,848	91	4,382.1
2010	10,501	9,658,261	3,498,040	94	5,480.7
2011	11,983	12,196,566	4,186,007	93	6,123.1
2012	8,598	15,773,140	4,446,004	101	4,461.9
2013	8,640	16,441,660	4,492,127	99	4,490.6
2014	8,453	15,954,254	4,455,081	97	4,489.1
2015	11,234	15,536,116	4,386,172	95	6,010.7
2016	9,759	14,075,310	3,783,829	95	5,272.3
2017	10,655	15,371,957	3,908,254	95	5,719.3
2018	13,404	15,716,877	4,238,775	91	7,356.8
2019	9,971	16,705,488	3,921,051	96	5,558.0
2020	9,505	16,718,952	3,823,329	96	5,516.5

County: county value. Kansas: state value. County Rank: highest county value ranked #1. (\$000): thousands of dollars. Nonmetro Kansas: Kansas total less Metropolitan Areas as defined by the Office of Management and Budget (OMB; released 3/6/2020). Per 1000: For nonmoney amounts, Per 1000=(county value / county population for the same year as the data) x 1000. \$ Per capita=(county value / county population for the same year as the data). Value= . indicates missing or suppressed data or value not calculated.

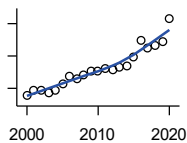
**Income**

**SOURCES OF PERSONAL INCOME:  
DIVIDENDS,INTEREST,RENT(\$000)**



U.S. Bureau of Economic Analysis,  
Regional Economic Information System  
(REIS)

Year	County	State of Kansas	Non Metro Kansas	County Rank	Per 1000 or \$ Per Capita
2000	14,612	15,916,201	4,736,921	101	7,008.2
2001	13,563	15,770,830	4,699,417	103	6,403.7
2002	12,730	15,111,563	4,316,887	101	5,951.4
2003	12,529	15,370,764	4,360,311	101	5,904.3
2004	11,273	15,820,469	4,251,925	101	5,396.4
2005	11,748	17,147,069	4,485,387	101	5,764.5
2006	12,977	20,117,848	4,945,184	98	6,402.1
2007	13,231	22,269,186	5,526,219	102	6,754.0
2008	14,642	24,972,485	6,180,979	103	7,512.6
2009	12,863	21,453,879	5,308,474	102	6,668.2
2010	13,399	20,861,351	5,414,285	102	6,993.2
2011	14,127	23,387,567	5,781,075	102	7,218.7
2012	17,613	25,689,368	6,389,505	101	9,140.1
2013	16,433	24,832,212	5,984,811	101	8,541.1
2014	18,009	27,412,684	6,403,356	101	9,564.0
2015	16,374	27,244,414	6,423,685	102	8,760.8
2016	15,781	27,293,441	6,389,161	102	8,525.7
2017	17,305	28,385,472	6,700,156	101	9,288.8
2018	16,500	29,953,419	6,772,504	102	9,056.0
2019	16,660	30,820,276	6,957,987	102	9,286.5
2020	16,320	30,283,520	6,844,745	102	9,471.9



**SOURCES OF PERSONAL INCOME:  
TRANSFER PAYMENTS (\$000)**

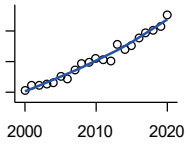
U.S. Bureau of Economic Analysis,  
Regional Economic Information System  
(REIS)

Year	County	State of Kansas	Non Metro Kansas	County Rank	Per 1000 or \$ Per Capita
2000	8,994	9,650,835	4,036,781	102	4,313.7
2001	9,793	10,549,124	4,355,457	102	4,623.7
2002	9,660	11,208,997	4,553,978	102	4,516.1
2003	9,225	11,709,049	4,702,911	103	4,347.3
2004	9,645	12,040,452	4,802,536	102	4,617.0
2005	10,652	12,696,735	5,059,314	102	5,226.7
2006	11,895	13,642,787	5,455,207	102	5,868.3
2007	11,549	14,686,821	5,775,024	102	5,895.4
2008	12,020	16,552,460	6,322,722	103	6,167.3
2009	12,681	18,025,603	6,790,962	103	6,573.9
2010	12,698	19,189,749	7,089,258	103	6,627.3
2011	13,095	19,625,770	7,255,825	102	6,691.4
2012	12,802	19,354,458	7,148,177	103	6,643.5
2013	13,344	19,639,358	7,185,636	103	6,935.6
2014	13,521	20,380,970	7,399,809	103	7,180.6
2015	14,802	21,116,856	7,623,577	102	7,919.7
2016	17,391	21,884,629	7,886,000	100	9,395.5
2017	16,209	22,559,744	8,062,517	102	8,700.5
2018	16,599	23,628,033	8,393,617	102	9,110.3
2019	17,142	25,050,174	8,845,371	102	9,555.2
2020	20,792	32,319,421	11,074,190	102	12,067.3

County: county value. Kansas: state value. County Rank: highest county value ranked #1. (\$000): thousands of dollars. Nonmetro Kansas: Kansas total less Metropolitan Areas as defined by the Office of Management and Budget (OMB; released 3/6/2020). Per 1000: For nonmoney amounts, Per 1000=(county value / county population for the same year as the data) x 1000. \$ Per capita=(county value / county population for the same year as the data). Value= . indicates missing or suppressed data or value not calculated.

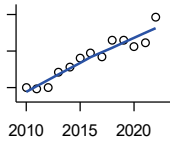
**Income**

**SOURCES OF PERSONAL INCOME:  
LESS SOCIAL INSURANCE (\$000)**



U.S. Bureau of Economic Analysis,  
Regional Economic Information System  
(REIS)

Year	County	State of Kansas	Non Metro Kansas	County Rank	Per 1000 or \$ Per Capita
2000	2,040	6,655,813	1,663,044	104	978.4
2001	2,222	6,869,934	1,740,915	104	1,049.1
2002	2,237	7,008,361	1,778,636	104	1,045.8
2003	2,249	7,172,781	1,821,858	104	1,059.8
2004	2,324	7,556,560	1,904,014	104	1,112.5
2005	2,512	7,911,241	1,986,907	103	1,232.6
2006	2,423	8,406,937	2,090,313	103	1,195.4
2007	2,738	8,806,941	2,180,587	103	1,397.7
2008	2,936	9,207,010	2,299,399	104	1,506.4
2009	2,969	9,002,859	2,248,703	105	1,539.1
2010	3,123	9,235,760	2,321,191	104	1,630.0
2011	3,048	8,515,986	2,139,991	103	1,557.5
2012	3,029	8,816,128	2,195,919	104	1,571.9
2013	3,582	10,225,399	2,540,439	104	1,861.7
2014	3,398	10,609,601	2,635,009	105	1,804.6
2015	3,532	11,028,204	2,663,038	105	1,889.8
2016	3,767	10,915,915	2,604,579	105	2,035.1
2017	3,958	11,224,218	2,669,954	105	2,124.5
2018	4,034	11,749,229	2,797,106	105	2,214.1
2019	4,147	12,245,451	2,889,336	104	2,311.6
2020	4,527	12,715,152	3,027,656	104	2,627.4



**HUD MEDIAN FAMILY INCOME**

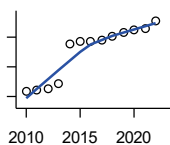
U.S. Department of Housing and Urban  
Development (HUD)

Year	County	State of Kansas	Non Metro Kansas	County Rank	Per 1000 or \$ Per Capita
2010	50,000	63,100	.	76	.
2011	49,500	64,300	.	86	.
2012	50,200	65,200	.	86	.
2013	58,100	64,800	.	49	.
2014	61,000	64,400	.	34	.
2015	65,800	66,300	.	18	.
2016	68,800	66,700	.	9	.
2017	66,500	68,500	.	25	.
2018	76,100	73,100	.	8	.
2019	76,000	75,200	.	11	.
2020	72,700	76,500	.	21	.
2021	74,200	77,400	.	24	.
2022	88,400	87,800	.	8	.

County: county value. Kansas: state value. County Rank: highest county value ranked #1. (\$000): thousands of dollars. Nonmetro Kansas: Kansas total less Metropolitan Areas as defined by the Office of Management and Budget (OMB; released 3/6/2020). Per 1000: For nonmoney amounts, Per 1000=(county value / county population for the same year as the data) x 1000. \$ Per capita=(county value / county population for the same year as the data). Value= . indicates missing or suppressed data or value not calculated.

**Income**

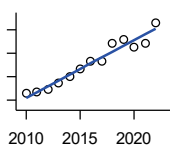
**HUD 30% LOW-TO-MEDIUM INCOME (LMI) LIMIT - 4 PERSONS**



U.S. Department of Housing and Urban Development (HUD)

Year	County	State of Kansas	Non Metro Kansas	County Rank	Per 1000 or \$ Per Capita
2010	15,850	.	.	105	.
2011	16,100	.	.	105	.
2012	16,300	.	.	105	.
2013	17,150	.	.	54	.
2014	23,850	.	.	105	.
2015	24,250	.	.	105	.
2016	24,300	.	.	105	.
2017	24,600	.	.	105	.
2018	25,100	21,950	.	105	.
2019	25,750	22,550	.	105	.
2020	26,200	22,950	.	105	.
2021	26,500	23,200	.	105	.
2022	27,750	25,950	.	105	.

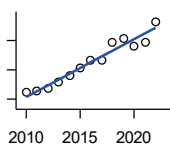
**HUD 50% LOW-TO-MEDIUM INCOME (LMI) LIMIT - 4 PERSONS**



U.S. Department of Housing and Urban Development (HUD)

Year	County	State of Kansas	Non Metro Kansas	County Rank	Per 1000 or \$ Per Capita
2010	26,400	.	.	105	.
2011	26,850	.	.	105	.
2012	27,200	.	.	105	.
2013	28,550	.	.	54	.
2014	29,950	.	.	35	.
2015	31,700	.	.	27	.
2016	33,250	.	.	12	.
2017	33,250	.	.	23	.
2018	37,050	36,550	.	7	.
2019	38,000	37,600	.	10	.
2020	36,350	38,250	.	22	.
2021	37,100	38,700	.	23	.
2022	41,500	43,300	.	17	.

**HUD 80% LOW-TO-MEDIUM INCOME (LMI) LIMIT - 4 PERSONS**



U.S. Department of Housing and Urban Development (HUD)

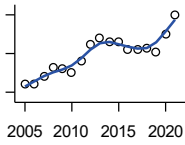
Year	County	State of Kansas	Non Metro Kansas	County Rank	Per 1000 or \$ Per Capita
2010	42,250	.	.	105	.
2011	42,950	.	.	105	.
2012	43,500	.	.	105	.
2013	45,650	.	.	54	.
2014	47,900	.	.	35	.
2015	50,700	.	.	27	.
2016	53,200	.	.	12	.
2017	53,200	.	.	23	.
2018	59,300	58,500	.	7	.
2019	60,800	60,150	.	10	.
2020	58,150	61,200	.	22	.
2021	59,350	61,900	.	23	.
2022	66,400	69,250	.	17	.

County: county value. Kansas: state value. County Rank: highest county value ranked #1. (\$000): thousands of dollars. Nonmetro Kansas: Kansas total less Metropolitan Areas as defined by the Office of Management and Budget (OMB; released 3/6/2020). Per 1000: For nonmoney amounts, Per 1000=(county value / county population for the same year as the data) x 1000. \$ Per capita=(county value / county population for the same year as the data). Value= . indicates missing or suppressed data or value not calculated.



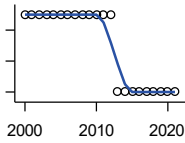
**Banking**

**BANK DEPOSITS** (1984-2004 in thousands; 2005- in millions)



Federal Deposit Insurance Corporation, Data Book, Operating Banks and Branches

Year	County	State of Kansas	Non Metro Kansas	County Rank	Per 1000 or \$ Per Capita
2005	34	48,304	17,000	102	16.7
2006	34	50,668	17,586	103	16.8
2007	38	54,057	18,517	101	19.4
2008	43	57,869	19,628	101	22.1
2009	42	57,763	20,031	101	21.8
2010	40	60,031	20,678	102	20.9
2011	46	61,094	21,347	101	23.5
2012	55	62,910	22,481	101	28.5
2013	58	64,547	22,795	100	30.1
2014	56	66,538	23,338	101	29.7
2015	56	68,160	23,367	101	30.0
2016	52	70,381	23,420	101	28.1
2017	52	73,329	23,928	100	27.9
2018	53	74,623	24,100	101	29.1
2019	51	76,436	24,488	100	28.4
2020	60	88,563	27,547	101	34.8
2021	70	97,055	30,122	98	40.9



**NUMBER OF BANKS**

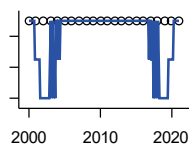
Federal Deposit Insurance Corporation, Data Book, Operating Banks and Branches

Year	County	State of Kansas	Non Metro Kansas	County Rank	Per 1000 or \$ Per Capita
2000	2	410	145	102	.
2001	2	410	136	102	.
2002	2	404	129	102	.
2003	2	397	121	102	.
2004	2	394	112	102	.
2005	2	388	101	102	.
2006	2	385	94	102	.
2007	2	382	91	102	.
2008	2	378	82	102	.
2009	2	374	79	102	.
2010	2	367	70	102	.
2011	2	359	61	102	.
2012	2	348	57	102	.
2013	1	332	45	105	.
2014	1	329	41	105	.
2015	1	320	31	105	.
2016	1	314	24	105	.
2017	1	301	13	105	.
2018	1	289	7	105	.
2019	1	279	3	105	.
2020	1	271	-1	105	.
2021	1	270	-6	105	.

County: county value. Kansas: state value. County Rank: highest county value ranked #1. (\$000): thousands of dollars. Nonmetro Kansas: Kansas total less Metropolitan Areas as defined by the Office of Management and Budget (OMB; released 3/6/2020). Per 1000: For nonmoney amounts, Per 1000=(county value / county population for the same year as the data) x 1000. \$ Per capita=(county value / county population for the same year as the data). Value= . indicates missing or suppressed data or value not calculated.

**Banking**

**NUMBER OF BANKING OFFICES**

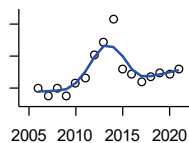


Federal Deposit Insurance Corporation, Data Book, Operating Banks and Branches

Year	County	State of Kansas	Non Metro Kansas	County Rank	Per 1000 or \$ Per Capita
2000	2	1,398	703	103	.
2001	2	1,424	708	103	.
2002	2	1,447	704	103	.
2003	2	1,461	708	103	.
2004	2	1,485	708	103	.
2005	2	1,505	711	103	.
2006	2	1,518	711	103	.
2007	2	1,543	717	103	.
2008	2	1,556	717	103	.
2009	2	1,569	716	103	.
2010	2	1,561	710	103	.
2011	2	1,559	707	103	.
2012	2	1,533	702	103	.
2013	2	1,518	696	103	.
2014	2	1,491	685	103	.
2015	2	1,472	675	103	.
2016	2	1,465	668	103	.
2017	2	1,452	666	104	.
2018	2	1,439	660	104	.
2019	2	1,439	663	104	.
2020	2	1,416	653	104	.
2021	2	1,392	641	104	.

**Government**

**TANGIBLE ASSESSED VALUATION (KDoR, million\$; 2006-)**



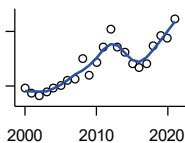
Kansas Department of Revenue, Division of Property Valuation, Statistical Report of Property Assessment and Taxation

Year	County	State of Kansas	Non Metro Kansas	County Rank	Per 1000 or \$ Per Capita
2006	35.1	28,964.3	10,316.9	98	17.3
2007	32.6	30,086.9	10,335.9	98	16.6
2008	35.0	31,000.3	10,856.9	97	17.9
2009	32.4	30,312.3	10,555.6	97	16.8
2010	36.4	29,450.2	10,158.7	90	19.0
2011	38.2	29,963.6	10,572.3	92	19.5
2012	45.4	30,382.9	10,876.2	86	23.6
2013	49.3	30,850.2	11,044.4	86	25.6
2014	56.6	31,783.0	11,388.9	84	30.1
2015	40.8	32,335.7	11,037.8	99	21.8
2016	39.3	33,156.3	10,889.6	98	21.2
2017	37.1	34,754.5	11,439.0	100	19.9
2018	38.7	36,566.1	11,907.1	101	21.3
2019	39.9	38,255.2	12,336.7	101	22.3
2020	39.4	39,333.9	12,219.3	101	22.8
2021	40.8	40,812.0	12,601.5	99	23.9

County: county value. Kansas: state value. County Rank: highest county value ranked #1. (\$000): thousands of dollars. Nonmetro Kansas: Kansas total less Metropolitan Areas as defined by the Office of Management and Budget (OMB; released 3/6/2020). Per 1000: For nonmoney amounts, Per 1000=(county value / county population for the same year as the data) x 1000. \$ Per capita=(county value / county population for the same year as the data). Value= . indicates missing or suppressed data or value not calculated.

**Government**

**SALES TAX COLLECTIONS (\$)**

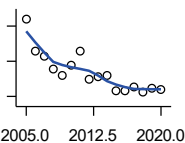


Kansas Department of Revenue. Use tax collections included beginning in calendar year 2018.

Year	County	State of Kansas	Non Metro Kansas	County Rank	Per 1000 or \$ Per Capita
2000	477,123	1,475,831,808	432,761,608	103	228,836.0
2001	405,392	1,481,026,688	426,316,284	105	191,403.2
2002	359,846	1,561,316,864	443,986,950	105	168,230.9
2003	423,527	1,626,782,976	461,658,700	105	199,588.6
2004	474,241	1,691,899,008	480,309,725	105	227,018.2
2005	499,238	1,744,980,352	497,494,867	105	244,964.7
2006	578,728	1,851,694,720	532,233,047	104	285,509.6
2007	600,853	1,917,546,752	559,319,583	104	306,713.9
2008	869,451	1,990,655,744	589,725,773	102	446,101.2
2009	646,233	1,866,223,078	548,627,132	104	335,009.3
2010	829,699	2,075,193,413	617,409,982	103	433,037.1
2011	1,027,313	2,347,193,367	702,671,534	102	524,942.8
2012	1,279,213	2,456,292,294	740,196,106	98	663,836.6
2013	1,033,340	2,489,204,048	746,226,565	102	537,078.9
2014	969,118	2,539,886,774	760,474,019	104	514,667.0
2015	804,319	2,642,374,740	750,090,163	105	430,347.1
2016	759,468	2,732,611,350	749,030,133	105	410,301.7
2017	801,139	2,726,104,521	744,246,491	105	430,026.5
2018	1,047,137	3,277,299,125	893,564,480	105	574,718.6
2019	1,187,973	3,395,631,405	939,607,762	104	662,192.3
2020	1,165,566	3,489,306,791	984,218,931	104	676,474.8
2021	1,423,136	3,981,293,227	1,098,391,422	103	832,243.3

**Crime**

**CRIME INDEX OFFENSES**



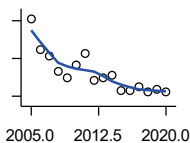
Kansas Bureau of Investigation, Note: Data are aggregated from reports by individual police departments and subject to be incomplete.

Year	County	State of Kansas	Non Metro Kansas	County Rank	Per 1000 or \$ Per Capita
2005	88	111,856	31,630	64	43.2
2006	52	110,032	.	67	25.7
2007	45	111,035	29,921	76	23.0
2008	31	93,996	27,342	80	15.9
2009	24	98,757	27,620	90	12.4
2010	35	98,354	26,909	76	18.3
2011	52	96,638	25,765	70	26.6
2012	19	98,914	26,963	95	9.9
2013	22	93,054	24,488	92	11.4
2014	24	86,323	23,341	90	12.7
2015	6	88,590	21,580	99	3.2
2016	7	90,589	21,565	100	3.8
2017	11	93,091	22,622	97	5.9
2018	5	92,062	20,325	99	2.7
2019	10	87,008	18,547	98	5.6
2020	8	87,346	17,762	99	4.6

County: county value. Kansas: state value. County Rank: highest county value ranked #1. (\$000): thousands of dollars. Nonmetro Kansas: Kansas total less Metropolitan Areas as defined by the Office of Management and Budget (OMB; released 3/6/2020). Per 1000: For nonmoney amounts, Per 1000=(county value / county population for the same year as the data) x 1000. \$ Per capita=(county value / county population for the same year as the data). Value= . indicates missing or suppressed data or value not calculated.

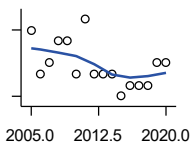
**Crime**

**PROPERTY CRIMES**



Kansas Bureau of Investigation, Note: Data are aggregated from reports by individual police departments and subject to be incomplete.

Year	County	State of Kansas	Non Metro Kansas	County Rank	Per 1000 or \$ Per Capita
2005	82	101,414	29,042	64	40.2
2006	50	99,110	.	66	24.7
2007	42	99,632	26,856	75	21.4
2008	26	83,964	24,367	80	13.3
2009	19	87,658	24,825	92	9.8
2010	33	87,926	24,133	75	17.2
2011	45	86,547	23,274	71	23.0
2012	17	88,707	24,220	93	8.8
2013	20	83,551	22,028	91	10.4
2014	22	76,794	20,858	87	11.7
2015	6	77,997	19,138	99	3.2
2016	6	79,549	19,207	100	3.2
2017	10	81,349	19,981	97	5.4
2018	4	79,695	17,769	99	2.2
2019	7	74,314	15,892	97	3.9
2020	5	73,450	15,100	98	2.9



**VIOLENT CRIMES**

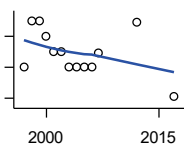
Kansas Bureau of Investigation, Note: Data are aggregated from reports by individual police departments and subject to be incomplete.

Year	County	State of Kansas	Non Metro Kansas	County Rank	Per 1000 or \$ Per Capita
2005	6	10,442	2,588	73	2.9
2006	2	10,922	.	90	1.0
2007	3	11,403	3,065	86	1.5
2008	5	10,032	2,975	76	2.6
2009	5	11,099	2,795	76	2.6
2010	2	10,428	2,776	93	1.0
2011	7	10,091	2,491	67	3.6
2012	2	10,207	2,743	95	1.0
2013	2	9,503	2,460	93	1.0
2014	2	9,529	2,483	98	1.1
2015	0	10,593	2,442	104	0.0
2016	1	11,040	2,358	97	0.5
2017	1	11,742	2,641	99	0.5
2018	1	12,367	2,556	97	0.5
2019	3	12,694	2,655	89	1.7
2020	3	13,896	2,662	89	1.7

County: county value. Kansas: state value. County Rank: highest county value ranked #1. (\$000): thousands of dollars. Nonmetro Kansas: Kansas total less Metropolitan Areas as defined by the Office of Management and Budget (OMB; released 3/6/2020). Per 1000: For nonmoney amounts, Per 1000=(county value / county population for the same year as the data) x 1000. \$ Per capita=(county value / county population for the same year as the data). Value= . indicates missing or suppressed data or value not calculated.

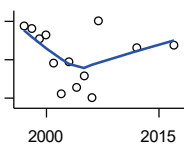
**Agriculture**

**NUMBER OF FARMS**



Kansas Agricultural Statistics, Kansas Farm Facts

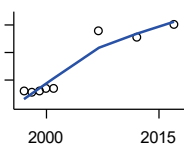
Year	County	State of Kansas	Non Metro Kansas	County Rank	Per 1000 or \$ Per Capita
1997	370	64,000	47,900	82	174.2
1998	400	65,000	48,850	81	190.9
1999	400	65,000	48,850	81	190.8
2000	390	64,000	48,030	81	187.1
2001	380	63,000	47,200	82	179.4
2002	380	63,000	47,200	82	177.7
2003	370	64,500	48,150	85	174.4
2004	370	64,500	48,150	85	177.1
2005	370	64,500	48,150	85	181.6
2006	370	64,000	47,650	83	182.5
2007	379	65,531	48,179	81	193.5
2012	399	61,773	45,655	73	207.1
2017	351	58,569	42,404	78	188.4



**TOTAL ACRES HARVESTED**

Kansas Agricultural Statistics, Kansas Farm Facts

Year	County	State of Kansas	Non Metro Kansas	County Rank	Per 1000 or \$ Per Capita
1997	177,420	22,846,000	19,430,580	68	83,531.1
1998	176,350	22,143,500	18,943,650	67	84,176.6
1999	170,720	21,708,900	18,581,750	67	81,450.4
2000	172,940	21,639,000	18,528,870	65	82,944.8
2001	158,130	21,847,900	18,689,750	77	74,660.1
2002	142,500	20,230,400	17,089,120	77	66,619.9
2003	159,200	21,827,700	18,661,920	77	75,023.6
2004	145,800	20,876,900	17,721,500	77	69,794.2
2005	151,280	21,936,500	18,807,930	79	74,229.6
2006	140,340	21,412,700	18,291,120	82	69,235.3
2007	180,316	19,886,655	17,164,743	56	92,044.9
2012	166,517	21,043,596	17,966,843	68	86,412.6
2017	167,301	21,837,465	18,543,057	69	89,801.9



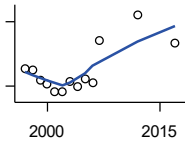
**VALUE: LIVESTOCK AND POULTRY (\$000)**

Kansas Agricultural Statistics, Kansas Farm Facts

Year	County	State of Kansas	Non Metro Kansas	County Rank	Per 1000 or \$ Per Capita
1997	30,224	2,806,445	2,500,305	26	14,229.8
1998	27,028	2,670,432	2,378,007	33	12,901.2
1999	30,743	2,849,061	2,554,528	28	14,667.5
2000	34,838	2,901,469	2,609,032	24	16,708.9
2001	35,735	2,693,274	2,437,187	17	16,872.0
2007	138,267	9,525,971	.	15	70,580.4
2012	128,891	11,476,571	10,883,216	20	66,886.9
2017	151,964	12,322,289	.	20	81,569.5

County: county value. Kansas: state value. County Rank: highest county value ranked #1. (\$000): thousands of dollars. Nonmetro Kansas: Kansas total less Metropolitan Areas as defined by the Office of Management and Budget (OMB; released 3/6/2020). Per 1000: For nonmoney amounts, Per 1000=(county value / county population for the same year as the data) x 1000. \$ Per capita=(county value / county population for the same year as the data). Value= . indicates missing or suppressed data or value not calculated.

**Agriculture**



VALUE:FIELD CROPS (\$000)  
EXCLUDING GOVERNMENT  
PROGRAM PAYMENTS

Kansas Agricultural Statistics, Kansas  
Farm Facts

Year	County	State of Kansas	Non Metro Kansas	County Rank	Per 1000 or \$ Per Capita
1997	27,839	4,474,942	3,800,365	79	13,106.9
1998	27,782	3,594,319	3,124,409	58	13,261.1
1999	22,569	3,118,193	2,728,319	62	10,767.7
2000	21,196	2,915,660	2,540,052	59	10,165.9
2001	17,145	3,283,117	2,857,136	88	8,094.9
2002	17,558	3,011,855	2,560,580	75	8,208.5
2003	22,419	3,623,255	3,150,629	77	10,565.0
2004	19,799	3,445,688	2,896,603	73	9,477.7
2005	23,516	3,678,123	3,182,677	73	11,538.8
2006	21,269	4,308,716	3,684,132	86	10,492.8
2007	41,068	4,887,212	.	55	20,963.8
2012	53,206	6,983,993	6,044,551	57	27,610.8
2017	39,927	6,460,437	.	79	21,431.6

County: county value. Kansas: state value. County Rank: highest county value ranked #1. (\$000): thousands of dollars. Nonmetro Kansas: Kansas total less Metropolitan Areas as defined by the Office of Management and Budget (OMB; released 3/6/2020). Per 1000: For nonmoney amounts, Per 1000=(county value / county population for the same year as the data) x 1000. \$ Per capita=(county value / county population for the same year as the data). Value= . indicates missing or suppressed data or value not calculated.