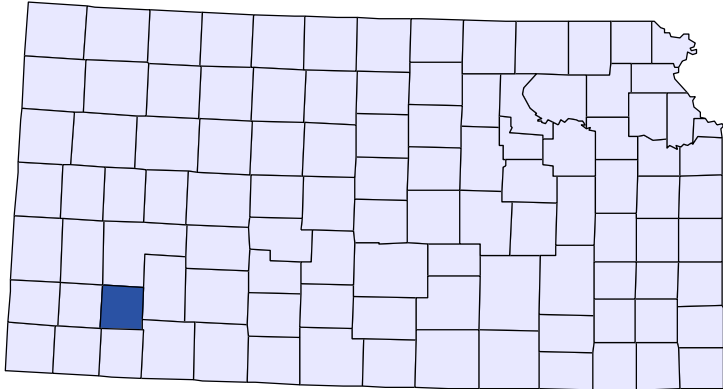




Kansas County Profiles

Haskell County



The University
of Kansas

Institute for Policy
& Social Research

KU INSTITUTE FOR POLICY
& SOCIAL RESEARCH

The University of Kansas

1541 Lilac Lane, Rm. 607
Blake Hall
Lawrence, KS 66045-3129

Foreword

The Kansas County Profile Report is published by the Institute for Policy & Social Research (IPSR) at the University of Kansas with support from the KU University Center project.* Special thanks to Xanthippe Wedel, senior research data engineer, who compiles and updates the county profiles and Genna Hurd, associate researcher, who provides editorial review.

County reports can be generated for any county in Kansas by simply clicking on the county from the web site:

<https://ipsr.ku.edu/ksdata/kcced/profiles/>

The Kansas County Profile Report contains 12 categories of information: Population, Vital Statistics and Health, Housing, Education, Social Environment, Business, Employment, Income, Banking, Government, Crime, and Agriculture. For more information about Kansas, please refer to the Kansas Statistical Abstract, available online at:

<https://ipsr.ku.edu/ksdata/ksah/>

We are always looking for ways to improve the Kansas County Profile Report and we welcome your suggestions and comments. Please address any correspondence to the Institute for Policy & Social Research, The University of Kansas, 607 Blake Hall, 1541 Lilac Lane, Lawrence, Kansas 66045-3129, e-mail ipsr@ku.edu or call 785-864-3701.

**The KU University Center is a collaborative effort led by the Institute for Policy & Social Research at the University of Kansas. This project is supported by the Economic Development Administration, U.S. Department of Commerce, through its University Center Program.*

The mission of EDA is to lead the federal economic development agenda by promoting innovation and competitiveness, preparing American regions for growth and success in the worldwide economy.

Kansas County Profiles Table of Contents

Population

Total Population (Decennial Census)	1
Estimated Population (Current Population Reports)	2
Urban Population	2
Rural Population	3
Net Migration (Decade Ending...)	3
Median Age	3

Population (Age Groups)

Population Under 18 (Decennial Census)	3
Population Age 18 and Over (Decennial Census)	4
Population Age 65 and Over (Decennial Census)	4
Population Age 85 and Over (Decennial Census)	4

Vital Statistics and Health

Live Births	5
Deaths	5
Marriages	6
Divorces and Annulments	6
Physicians: M.D. Physicians	7
Physicians: D.O. Physicians	7
Dentists	8
Number of Hospitals	8
Number of Hospital Beds	9

Housing

Housing Units (Decennial Census)	9
Housing Units (Estimated)	10
Occupied Housing Units	10
Owner Occupied Housing Units	10
Renter Occupied Housing Units	11
Vacant Housing Units	11
Median Value (\$): Owner Occupied Housing Units	11
Median Contract Rent (\$)	12
Fair Market Rent: 2 Bedrooms	12

Education

Population Age 25 and Over	13
Percent of Population 25+ with High School or Higher Education	13
Percent of Population 25+ with Bachelors Degree or Higher Education	14
Public School Enrollment (FTE- School Year Beginning...)	14
Pupil/Teacher Ratio (School Year Beginning...)	15

Kansas County Profiles Table of Contents

Social Environment

Total Child Care Facilities	15
Preschools	16
Food Stamp Beneficiaries	16
Percent of Population Receiving Food Stamps	17
Estimated Number of People in Poverty	17
Estimated Percent of People in Poverty	18
Estimated Number of Related Children Age 5 to 17 in Families in Poverty	18
Estimated Percent of Related Children Age 5 to 17 in Families in Poverty	19
Estimated Number Under 18 in Poverty	19
Estimated Percent Under 18 in Poverty	20

Business

Establishments: Total	21
Establishments: 1-19 Employees	22
Establishments: 20-99 Employees	22
Establishments: 100-499 Employees	23
Establishments: 500 or More Employees	23
Establishments: Forestry, Fishing, Hunting, and Ag Support	24
Establishments: Mining	24
Establishments: Utilities	25
Establishments: Construction	25
Establishments: Manufacturing	26
Establishments: Wholesale Trade	26
Establishments: Retail Trade	27
Establishments: Transportation and Warehousing	27
Establishments: Information	28
Establishments: Finance and Insurance	28
Establishments: Real Estate, Rental, and Leasing	29
Establishments: Professional, Scientific, and Technical Services	29
Establishments: Management of Companies and Enterprises	30
Establishments: Admin, Support, Waste Management, and Remediation	30
Establishments: Educational Services	31
Establishments: Health Care and Social Assistance	31
Establishments: Arts, Entertainment, and Recreation	32
Establishments: Accommodation and Food Services	32
Establishments: Other Services	33

Kansas County Profiles Table of Contents

Business	
Total Annual Payroll (\$000)	34
Total Annual Payroll (\$000): Forestry, Fishing, Hunting, and Ag Support	35
Total Annual Payroll (\$000): Mining	35
Total Annual Payroll (\$000): Utilities	36
Total Annual Payroll (\$000): Construction	36
Total Annual Payroll (\$000): Manufacturing	37
Total Annual Payroll (\$000): Wholesale Trade	37
Total Annual Payroll (\$000): Retail Trade	38
Total Annual Payroll (\$000): Transportation and Warehousing	38
Total Annual Payroll (\$000): Information	39
Total Annual Payroll (\$000): Finance and Insurance	39
Total Annual Payroll (\$000): Real Estate, Rental, and Leasing	40
Total Annual Payroll (\$000): Professional, Scientific, and Technical Services	40
Total Annual Payroll (\$000): Management of Companies and Enterprises	41
Total Annual Payroll (\$000): Admin, Support, Waste Management, and Remediation	41
Total Annual Payroll (\$000): Educational Services	42
Total Annual Payroll (\$000): Health Care and Social Assistance	42
Total Annual Payroll (\$000): Arts, Entertainment, and Recreation	43
Total Annual Payroll (\$000): Accommodation and Food Services	43
Total Annual Payroll (\$000): Other Services	44
Nominal Taxable Retail Sales (Million\$)	44
Retail Pull Factor	45
Employment	
Civilian Labor Force (BLS - Place of Residence)	46
Employed (BLS - Place of Residence)	47
Unemployed (BLS - Place of Residence)	48
Unemployment Rate (BLS - Place of Residence)	49
BEA Employment: Total (Place of Work)	49
BEA Employment: Farm	50
BEA Employment: Non-Farm	50
Average Wage per Job (\$)	51
BEA Employment: Forestry, Fishing, Hunting, and Ag Support	51
BEA Employment: Mining	52
BEA Employment: Utilities	52
BEA Employment: Construction	53
BEA Employment: Manufacturing	53
BEA Employment: Wholesale Trade	54
BEA Employment: Retail Trade	54
BEA Employment: Transportation and Warehousing	55
BEA Employment: Information	55
BEA Employment: Finance and Insurance	56
BEA Employment: Real Estate, Rental, and Leasing	56
BEA Employment: Professional and Technical Services	57
BEA Employment: Management of Companies and Enterprises	57
BEA Employment: Administrative and Waste Services	58
BEA Employment: Educational Services	58
BEA Employment: Health Care and Social Assistance	59
BEA Employment: Arts, Entertainment, and Recreation	59
BEA Employment: Government and Government Enterprises	60
BEA Employment: Accommodation and Food Services	60
BEA Employment: Other Services, Except Public Administration	61

Kansas County Profiles Table of Contents

Income

BEA Per Capita Personal Income (\$)	61
Sources of Personal Income: Total Personal Income (\$000)	62
Sources of Personal Income: Wages And Salaries (\$000)	62
Sources of Personal Income: Proprietors-Farm (\$000)	63
Sources of Personal Income: Proprietors-Nonfarm (\$000)	63
Sources of Personal Income: Dividends, Interest, Rent (\$000)	64
Sources of Personal Income: Transfer Payments (\$000)	64
Sources of Personal Income: Less Social Insurance (\$000)	65
HUD Median Family Income	65
HUD 30% Low-To-Medium Income (LMI) Limit - 4 Persons	66
HUD 50% Low-To-Medium Income (LMI) Limit - 4 Persons	66
HUD 80% Low-To-Medium Income (LMI) Limit - 4 Persons	66

Banking

Bank Deposits (\$000)	67
Number of Banks	67
Number of Banking Offices	68

Government

Tangible Assessed Valuation (million\$)	68
Sales Tax Collections	69

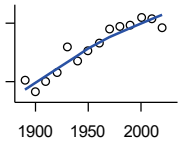
Crime

Crime Index Offenses	69
Property Crimes	70
Violent Crimes	70

Agriculture

Number of Farms	71
Total Acres Harvested	71
Value: Livestock and Poultry (\$000)	71
Value: Field Crops (\$000) Excluding Government Program Payments	72

Population



DECENNIAL CENSUS:TOTAL POPULATION

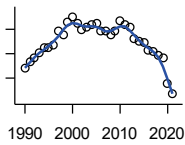
U.S. Census Bureau: Decennial Census

Year	County	State of Kansas	Non Metro Kansas	County Rank	Per 1000 or \$ Per Capita
1890	1,077	1,427,096	968,413	103	.
1900	457	1,470,495	981,206	102	.
1910	993	1,690,949	1,138,294	105	.
1920	1,455	1,769,257	1,153,525	102	.
1930	2,805	1,880,999	1,180,056	102	.
1940	2,088	1,801,028	1,097,216	102	.
1950	2,606	1,905,299	1,046,823	102	.
1960	2,990	2,178,611	1,021,510	101	.
1970	3,672	2,246,578	958,104	93	.
1980	3,814	2,363,679	980,085	89	.
1990	3,886	2,477,574	939,416	82	.
2000	4,307	2,688,418	959,507	78	.
2010	4,256	2,853,118	929,981	74	.
2020	3,780	2,937,880	892,006	75	.

County: county value. Kansas: state value. County Rank: highest county value ranked #1. (\$000): thousands of dollars. Nonmetro Kansas: Kansas total less Metropolitan Areas as defined by the Office of Management and Budget (OMB; released 3/6/2020). Per 1000: For nonmoney amounts, Per 1000=(county value / county population for the same year as the data) x 1000. \$ Per capita=(county value / county population for the same year as the data). Value= . indicates missing or suppressed data or value not calculated.

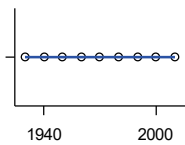
Population

ESTIMATED POPULATION



U.S. Census Bureau

Year	County	State of Kansas	Non Metro Kansas	County Rank	Per 1000 or \$ Per Capita
1990	3,880	2,481,349	938,607	82	.
1991	3,932	2,498,722	938,965	81	.
1992	3,970	2,532,394	942,759	80	.
1993	4,012	2,556,547	947,515	79	.
1994	4,048	2,580,513	952,178	78	.
1995	4,051	2,601,007	957,771	78	.
1996	4,066	2,614,554	959,455	78	.
1997	4,188	2,635,292	960,225	78	.
1998	4,155	2,660,598	960,569	78	.
1999	4,257	2,678,338	960,704	78	.
2000	4,302	2,693,681	959,230	78	.
2001	4,246	2,702,162	952,607	77	.
2002	4,194	2,713,535	945,985	77	.
2003	4,214	2,723,004	941,474	76	.
2004	4,238	2,734,373	937,623	74	.
2005	4,250	2,745,299	932,852	74	.
2006	4,182	2,762,931	928,809	74	.
2007	4,184	2,783,785	927,643	74	.
2008	4,153	2,808,076	926,248	74	.
2009	4,188	2,832,704	926,755	74	.
2010	4,273	2,858,190	930,028	74	.
2011	4,235	2,869,225	927,675	74	.
2012	4,215	2,885,257	925,152	74	.
2013	4,126	2,893,212	922,383	74	.
2014	4,101	2,900,475	917,854	74	.
2015	4,089	2,909,011	912,199	74	.
2016	4,026	2,910,844	905,099	74	.
2017	4,019	2,908,718	897,981	74	.
2018	3,990	2,911,359	892,656	74	.
2019	3,968	2,913,314	887,455	74	.
2020	3,756	2,935,880	889,750	75	.
2021	3,668	2,934,582	886,438	75	.



URBAN POPULATION

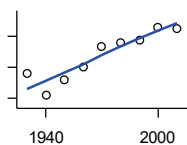
U.S. Census Bureau: Decennial Census

Year	County	State of Kansas	Non Metro Kansas	County Rank	Per 1000 or \$ Per Capita
1930	0	729,834	336,666	105	.
1940	0	753,941	349,228	105	.
1950	0	993,220	398,923	105	.
1960	0	1,328,741	457,447	105	.
1970	0	1,484,870	450,543	105	.
1980	0	1,575,899	474,769	105	.
1990	0	1,712,564	464,205	105	.
2000	0	1,920,081	488,011	105	.
2010	0	2,116,961	485,780	105	.

County: county value. Kansas: state value. County Rank: highest county value ranked #1. (\$000): thousands of dollars. Nonmetro Kansas: Kansas total less Metropolitan Areas as defined by the Office of Management and Budget (OMB; released 3/6/2020). Per 1000: For nonmoney amounts, Per 1000=(county value / county population for the same year as the data) x 1000. \$ Per capita=(county value / county population for the same year as the data). Value= . indicates missing or suppressed data or value not calculated.

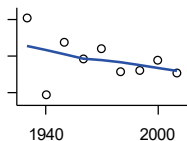
Population

RURAL POPULATION



U.S. Census Bureau

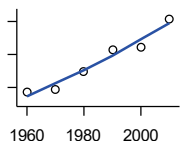
Year	County	State of Kansas	Non Metro Kansas	County Rank	Per 1000 or \$ Per Capita
1930	2,805	1,151,165	843,390	101	.
1940	2,088	1,047,087	747,988	102	.
1950	2,606	912,079	647,900	100	.
1960	2,990	849,870	564,063	95	.
1970	3,672	761,708	509,972	85	.
1980	3,814	787,780	505,873	77	.
1990	3,886	765,010	475,211	69	.
2000	4,307	768,337	471,900	64	.
2010	4,256	736,157	444,201	57	.



NET MIGRATION: DECADE ENDING...

calculated by the Institute for Policy and Social Research, The University of Kansas

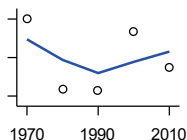
Year	County	State of Kansas	Non Metro Kansas	County Rank	Per 1000 or \$ Per Capita
1930	1,045	-66,132	-101,869	14	372.5
1940	-1,072	-192,649	-166,022	26	-513.4
1950	375	-84,329	-158,379	18	143.9
1960	-66	-38,999	-146,640	12	-22.1
1970	193	-119,662	-105,116	9	52.6
1980	-414	-21,983	-6,184	71	-108.5
1990	-410	-61,835	-79,274	33	-105.5
2000	-98	68,960	4,247	61	-22.8
2010	-456	5,578	-50,648	76	-107.1



MEDIAN AGE

U.S. Census Bureau: Decennial Census

Year	County	State of Kansas	Non Metro Kansas	County Rank	Per 1000 or \$ Per Capita
1960	25.4	26.9	.	98	.
1970	25.8	28.7	.	97	.
1980	28.0	30.1	.	96	.
1990	30.5	32.9	.	97	.
2000	30.8	35.2	.	99	.
2010	34.3	36.0	.	92	.



POPULATION UNDER 18 (DECENNIAL CENSUS)

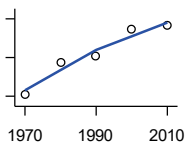
U.S. Census Bureau: Decennial Census

Year	County	State of Kansas	Non Metro Kansas	County Rank	Per 1000 or \$ Per Capita
1970	1,451	746,354	306,227	86	.
1980	1,268	649,035	263,919	77	.
1990	1,265	661,614	250,107	74	.
2000	1,418	712,993	250,757	68	.
2010	1,326	726,939	229,213	66	.

County: county value. Kansas: state value. County Rank: highest county value ranked #1. (\$000): thousands of dollars. Nonmetro Kansas: Kansas total less Metropolitan Areas as defined by the Office of Management and Budget (OMB; released 3/6/2020). Per 1000: For nonmoney amounts, Per 1000=(county value / county population for the same year as the data) x 1000. \$ Per capita=(county value / county population for the same year as the data). Value= . indicates missing or suppressed data or value not calculated.

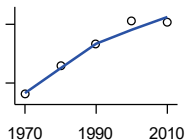
Population

**POPULATION AGE 18 AND OVER
(DECENNIAL CENSUS)**



U.S. Census Bureau: Decennial Census

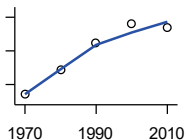
Year	County	State of Kansas	Non Metro Kansas	County Rank	Per 1000 or \$ Per Capita
1970	2,221	1,500,224	654,288	95	.
1980	2,554	1,714,282	716,684	91	.
1990	2,621	1,815,960	689,309	87	.
2000	2,889	1,975,425	709,154	80	.
2010	2,930	2,126,179	700,768	76	.



**POPULATION AGE 65 AND OVER
(DECENNIAL CENSUS)**

U.S. Census Bureau: Decennial Census

Year	County	State of Kansas	Non Metro Kansas	County Rank	Per 1000 or \$ Per Capita
1970	271	266,201	149,049	101	.
1980	343	306,263	164,932	100	.
1990	401	342,571	168,579	102	.
2000	457	356,229	161,769	99	.
2010	456	376,116	154,214	97	.



**POPULATION AGE 85 AND OVER
(DECENNIAL CENSUS)**

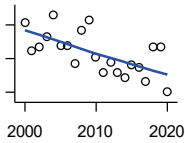
U.S. Census Bureau: Decennial Census

Year	County	State of Kansas	Non Metro Kansas	County Rank	Per 1000 or \$ Per Capita
1970	14	23,899	13,698	103	.
1980	29	33,455	18,804	99	.
1990	45	42,241	22,970	103	.
2000	56	51,770	26,644	100	.
2010	54	59,318	26,197	103	.

County: county value. Kansas: state value. County Rank: highest county value ranked #1. (\$000): thousands of dollars. Nonmetro Kansas: Kansas total less Metropolitan Areas as defined by the Office of Management and Budget (OMB; released 3/6/2020). Per 1000: For nonmoney amounts, Per 1000=(county value / county population for the same year as the data) x 1000. \$ Per capita=(county value / county population for the same year as the data). Value= . indicates missing or suppressed data or value not calculated.

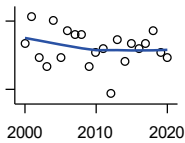
Vital Statistics and Health

BIRTHS (LIVE)



Kansas Department of Health and Environment

Year	County	State of Kansas	Non Metro Kansas	County Rank	Per 1000 or \$ Per Capita
2000	81	39,654	12,980	58	18.8
2001	65	38,832	12,527	64	15.3
2002	67	39,338	12,476	62	16.0
2003	73	39,353	12,342	58	17.3
2004	86	39,553	12,398	53	20.3
2005	68	39,701	12,382	57	16.0
2006	68	40,896	12,726	61	16.3
2007	57	41,951	12,990	71	13.6
2008	77	41,815	12,970	59	18.5
2009	83	41,388	12,949	57	19.8
2010	61	40,439	12,200	65	14.3
2011	52	39,628	12,098	70	12.3
2012	58	40,304	12,217	70	13.8
2013	52	38,805	11,877	72	12.6
2014	49	39,193	12,052	75	11.9
2015	56	39,126	11,836	70	13.7
2016	55	38,048	11,467	72	13.7
2017	46	36,464	10,968	73	11.4
2018	67	36,268	10,826	62	16.8
2019	67	35,395	10,506	61	16.9
2020	40	34,368	10,222	76	10.6



DEATHS

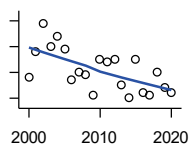
Kansas Department of Health and Environment

Year	County	State of Kansas	Non Metro Kansas	County Rank	Per 1000 or \$ Per Capita
2000	30	24,676	11,175	97	7.0
2001	36	24,590	10,807	94	8.5
2002	27	24,968	11,079	101	6.4
2003	25	24,417	10,615	99	5.9
2004	35	23,720	10,369	92	8.3
2005	27	24,632	10,599	97	6.4
2006	33	24,489	10,538	96	7.9
2007	32	24,413	10,601	95	7.6
2008	32	24,896	10,593	96	7.7
2009	25	23,997	9,938	102	6.0
2010	28	24,428	10,105	97	6.6
2011	29	25,114	10,520	100	6.8
2012	19	25,084	10,259	102	4.5
2013	31	25,347	10,249	93	7.5
2014	26	25,731	10,275	98	6.3
2015	30	26,611	10,539	98	7.3
2016	29	26,129	10,231	95	7.2
2017	30	26,725	10,452	93	7.5
2018	33	27,213	10,389	92	8.3
2019	28	27,312	10,569	96	7.1
2020	27	31,667	11,850	99	7.1

County: county value. Kansas: state value. County Rank: highest county value ranked #1. (\$000): thousands of dollars. Nonmetro Kansas: Kansas total less Metropolitan Areas as defined by the Office of Management and Budget (OMB; released 3/6/2020). Per 1000: For nonmoney amounts, Per 1000=(county value / county population for the same year as the data) x 1000. \$ Per capita=(county value / county population for the same year as the data). Value= . indicates missing or suppressed data or value not calculated.

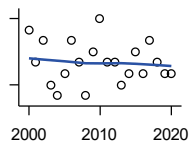
Vital Statistics and Health

MARRIAGES



Kansas Department of Health and Environment

Year	County	State of Kansas	Non Metro Kansas	County Rank	Per 1000 or \$ Per Capita
2000	23	20,426	7,333	87	5.3
2001	33	20,457	7,441	71	7.8
2002	44	19,783	6,794	61	10.5
2003	35	18,722	6,469	65	8.3
2004	39	19,174	6,756	65	9.2
2005	34	18,745	6,481	70	8.0
2006	22	18,836	6,433	83	5.3
2007	25	18,910	6,464	77	6.0
2008	24	18,717	6,283	77	5.8
2009	16	18,268	6,015	90	3.8
2010	30	18,150	5,925	71	7.0
2011	29	17,897	5,977	72	6.8
2012	30	18,154	5,752	69	7.1
2013	20	17,328	5,533	81	4.8
2014	15	17,655	5,535	89	3.7
2015	30	17,595	5,400	66	7.3
2016	17	17,948	5,340	85	4.2
2017	16	17,274	5,163	89	4.0
2018	25	16,362	4,999	69	6.3
2019	19	15,403	4,650	78	4.8
2020	17	14,038	4,066	75	4.5



DIVORCES AND ANNULMENTS

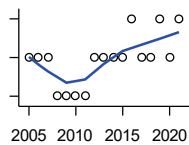
Kansas Department of Health and Environment

Year	County	State of Kansas	Non Metro Kansas	County Rank	Per 1000 or \$ Per Capita
2000	9	10,105	4,000	90	2.1
2001	6	9,885	3,818	93	1.4
2002	8	9,645	3,716	92	1.9
2003	4	8,644	3,464	100	0.9
2004	3	8,759	3,506	105	0.7
2005	5	8,476	3,311	98	1.2
2006	8	9,145	3,387	89	1.9
2007	6	9,347	3,402	95	1.4
2008	3	9,818	3,655	105	0.7
2009	7	10,333	3,463	91	1.7
2010	10	10,579	3,530	87	2.3
2011	6	10,445	3,347	96	1.4
2012	6	9,782	3,040	97	1.4
2013	4	9,085	2,973	101	1.0
2014	5	8,441	2,682	95	1.2
2015	7	8,036	2,704	88	1.7
2016	5	7,198	2,424	93	1.2
2017	8	6,494	2,315	79	2.0
2018	6	6,538	2,269	83	1.5
2019	5	6,398	2,357	94	1.3
2020	5	5,169	1,866	84	1.3

County: county value. Kansas: state value. County Rank: highest county value ranked #1. (\$000): thousands of dollars. Nonmetro Kansas: Kansas total less Metropolitan Areas as defined by the Office of Management and Budget (OMB; released 3/6/2020). Per 1000: For nonmoney amounts, Per 1000=(county value / county population for the same year as the data) x 1000. \$ Per capita=(county value / county population for the same year as the data). Value= . indicates missing or suppressed data or value not calculated.

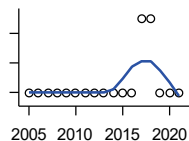
Vital Statistics and Health

PHYSICIANS: M.D. PHYSICIANS



Kansas Department of Health and Environment (1981-2005,2010-);Kansas Health Policy Authority (2006-2009)

Year	County	State of Kansas	Non Metro Kansas	County Rank	Per 1000 or \$ Per Capita
2005	2	4,241	912	81	0.5
2006	2	4,310	953	86	0.5
2007	2	5,309	1,046	86	0.5
2008	1	5,110	1,016	101	0.2
2009	1	5,249	996	98	0.2
2010	1	5,192	979	98	0.2
2011	1	5,243	983	96	0.2
2012	2	5,693	1,033	84	0.5
2013	2	6,106	1,071	83	0.5
2014	2	5,839	951	78	0.5
2015	2	5,703	855	77	0.5
2016	3	4,278	643	57	0.7
2017	2	6,332	1,047	81	0.5
2018	2	6,079	1,065	87	0.5
2019	3	6,435	1,036	70	0.8
2020	2	6,668	1,045	87	0.5
2021	3	6,745	1,042	72	0.8



PHYSICIANS: D.O. PHYSICIANS

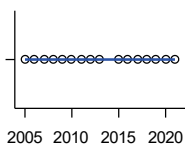
Kansas Department of Health and Environment (1981-2005,2010-);Kansas Health Policy Authority (2006-2009)

Year	County	State of Kansas	Non Metro Kansas	County Rank	Per 1000 or \$ Per Capita
2005	0	553	174	105	0.0
2006	0	508	171	105	0.0
2007	0	569	169	105	0.0
2008	0	558	166	105	0.0
2009	0	564	160	105	0.0
2010	0	583	169	105	0.0
2011	0	502	152	105	0.0
2012	0	718	200	105	0.0
2013	0	829	210	105	0.0
2014	0	817	189	105	0.0
2015	0	819	190	105	0.0
2016	0	632	136	105	0.0
2017	1	579	129	57	0.2
2018	1	871	164	64	0.3
2019	0	951	212	105	0.0
2020	0	1,018	204	105	0.0
2021	0	1,095	217	105	0.0

County: county value. Kansas: state value. County Rank: highest county value ranked #1. (\$000): thousands of dollars. Nonmetro Kansas: Kansas total less Metropolitan Areas as defined by the Office of Management and Budget (OMB; released 3/6/2020). Per 1000: For nonmoney amounts, Per 1000=(county value / county population for the same year as the data) x 1000. \$ Per capita=(county value / county population for the same year as the data). Value= . indicates missing or suppressed data or value not calculated.

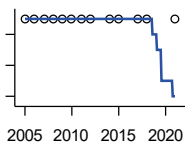
Vital Statistics and Health

DENTISTS



Kansas Department of Health and Environment (1981-2006,2010-);Kansas Health Policy Authority (2007-2009)

Year	County	State of Kansas	Non Metro Kansas	County Rank	Per 1000 or \$ Per Capita
2005	0	1,347	363	105	0.0
2006	0	1,381	361	105	0.0
2007	0	1,335	350	105	0.0
2008	0	1,392	353	105	0.0
2009	0	1,353	350	105	0.0
2010	0	1,401	365	105	0.0
2011	0	1,338	346	105	0.0
2012	0	1,434	392	105	0.0
2013	0	1,212	328	105	0.0
2015	0	1,240	327	105	0.0
2016	0	1,456	350	105	0.0
2017	0	1,467	350	105	0.0
2018	0	1,604	359	105	0.0
2019	0	1,646	355	105	0.0
2020	0	1,646	355	105	0.0
2021	0	1,688	362	105	0.0



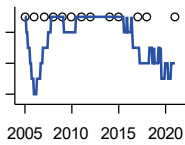
NUMBER OF HOSPITALS

American Hospital Association, American Hospital Association Guide to the Health Care Field

Year	County	State of Kansas	Non Metro Kansas	County Rank	Per 1000 or \$ Per Capita
2005	1	158	105	96	.
2006	1	158	105	96	.
2007	1	159	104	95	.
2008	1	159	104	95	.
2009	1	158	105	96	.
2010	1	158	104	96	.
2011	1	158	103	96	.
2012	1	157	103	96	.
2014	1	156	.	96	.
2015	1	155	103	96	.
2017	1	157	102	96	.
2018	1	154	99	95	.
2021	1	151	.	95	.

County: county value. Kansas: state value. County Rank: highest county value ranked #1. (\$000): thousands of dollars. Nonmetro Kansas: Kansas total less Metropolitan Areas as defined by the Office of Management and Budget (OMB; released 3/6/2020). Per 1000: For nonmoney amounts, Per 1000=(county value / county population for the same year as the data) x 1000. \$ Per capita=(county value / county population for the same year as the data). Value= . indicates missing or suppressed data or value not calculated.

Vital Statistics and Health

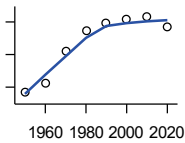


NUMBER OF HOSPITAL BEDS

Kansas Department of Health and Environment

Year	County	State of Kansas	Non Metro Kansas	County Rank	Per 1000 or \$ Per Capita
2005	57	12,389	5,687	55	13.4
2006	57	11,992	5,514	51	13.6
2007	57	12,171	5,637	50	13.6
2008	57	12,332	5,700	51	13.7
2009	57	12,283	5,652	50	13.6
2010	57	12,218	5,521	51	13.4
2011	57	12,182	5,335	49	13.5
2012	57	12,002	5,355	48	13.5
2014	57	12,034	.	47	13.9
2015	57	11,926	5,330	46	13.9
2017	57	11,491	4,825	42	14.2
2018	57	11,448	4,583	39	14.3
2021	57	11,199	.	37	15.5

Housing



HOUSING UNITS (DECENNIAL)

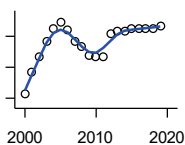
U.S. Census Bureau: Decennial Census

Year	County	State of Kansas	Non Metro Kansas	County Rank	Per 1000 or \$ Per Capita
1950	745	586,650	328,210	101	285.9
1960	848	672,899	329,380	101	283.6
1970	1,247	789,735	363,824	96	339.6
1980	1,495	955,207	416,877	93	392.0
1990	1,586	1,044,112	417,062	90	408.1
2000	1,639	1,131,395	422,218	88	380.5
2010	1,666	1,233,215	424,050	85	391.4
2020	1,545	1,275,689	413,120	86	408.7

County: county value. Kansas: state value. County Rank: highest county value ranked #1. (\$000): thousands of dollars. Nonmetro Kansas: Kansas total less Metropolitan Areas as defined by the Office of Management and Budget (OMB; released 3/6/2020). Per 1000: For nonmoney amounts, Per 1000=(county value / county population for the same year as the data) x 1000. \$ Per capita=(county value / county population for the same year as the data). Value= . indicates missing or suppressed data or value not calculated.

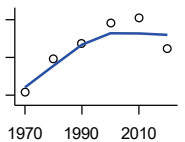
Housing

HOUSING UNITS (ESTIMATED)



U.S. Census Bureau

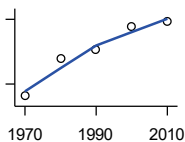
Year	County	State of Kansas	Non Metro Kansas	County Rank	Per 1000 or \$ Per Capita
2000	1,643	1,134,529	422,560	87	381.5
2001	1,657	1,146,858	423,876	87	390.2
2002	1,667	1,160,129	425,089	86	397.5
2003	1,677	1,171,620	425,936	86	398.0
2004	1,685	1,184,702	426,593	86	397.6
2005	1,689	1,195,791	426,964	86	397.4
2006	1,684	1,206,692	426,713	86	402.7
2007	1,677	1,217,608	426,090	86	400.8
2008	1,673	1,225,625	425,768	85	402.8
2009	1,668	1,230,552	424,776	85	398.3
2010	1,667	1,234,456	424,174	85	391.7
2011	1,667	1,238,052	424,549	85	393.6
2012	1,682	1,241,992	425,116	84	399.1
2013	1,683	1,246,675	425,699	84	407.9
2014	1,683	1,253,284	426,269	84	410.4
2015	1,685	1,258,999	426,844	84	412.1
2016	1,685	1,265,684	427,465	84	418.5
2017	1,685	1,273,536	427,746	84	419.3
2018	1,685	1,280,649	428,099	84	422.3
2019	1,687	1,288,401	428,495	84	425.2



OCCUPIED HOUSING UNITS

U.S. Census Bureau: Decennial Census

Year	County	State of Kansas	Non Metro Kansas	County Rank	Per 1000 or \$ Per Capita
1970	1,113	727,364	326,494	95	303.1
1980	1,292	872,239	371,693	93	338.8
1990	1,372	944,726	365,901	90	353.1
2000	1,481	1,037,891	375,313	84	343.9
2010	1,510	1,112,096	370,269	79	354.8
2020	1,345	1,151,360	356,330	80	355.8



OWNER OCCUPIED HOUSING UNITS

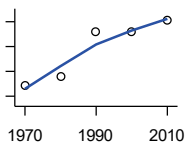
U.S. Census Bureau: Decennial Census

Year	County	State of Kansas	Non Metro Kansas	County Rank	Per 1000 or \$ Per Capita
1970	744	502,585	236,338	96	202.6
1980	916	612,433	277,096	95	240.2
1990	960	641,762	263,099	91	247.0
2000	1,069	718,703	271,350	87	248.2
2010	1,089	753,532	261,763	82	255.9

County: county value. Kansas: state value. County Rank: highest county value ranked #1. (\$000): thousands of dollars. Nonmetro Kansas: Kansas total less Metropolitan Areas as defined by the Office of Management and Budget (OMB; released 3/6/2020). Per 1000: For nonmoney amounts, Per 1000=(county value / county population for the same year as the data) x 1000. \$ Per capita=(county value / county population for the same year as the data). Value= . indicates missing or suppressed data or value not calculated.

Housing

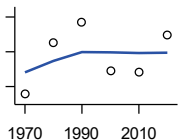
RENTER OCCUPIED HOUSING UNITS



U.S. Census Bureau: Decennial Census

Year	County	State of Kansas	Non Metro Kansas	County Rank	Per 1000 or \$ Per Capita
1970	369	224,779	90,156	87	100.5
1980	376	259,806	94,597	82	98.6
1990	412	302,964	102,802	78	106.0
2000	412	319,188	103,963	75	95.7
2010	421	358,564	108,506	73	98.9

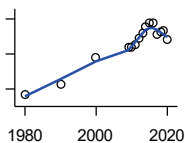
VACANT HOUSING UNITS



U.S. Census Bureau: Decennial Census

Year	County	State of Kansas	Non Metro Kansas	County Rank	Per 1000 or \$ Per Capita
1970	131	60,058	35,954	96	35.7
1980	191	77,912	41,584	96	50.1
1990	214	99,386	51,161	94	55.1
2000	158	93,309	46,904	94	36.7
2010	156	121,119	53,781	104	36.7
2020	200	124,329	56,790	92	52.9

MEDIAN VALUE (\$): OWNER OCCUPIED HOUSING UNITS



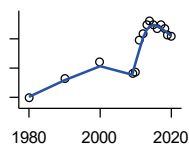
U.S. Census Bureau, Decennial Census (- 2000), (2009 -) American Community Survey five-year average ending in year shown.

Year	County	State of Kansas	Non Metro Kansas	County Rank	Per 1000 or \$ Per Capita
1980	34,000	37,800	.	30	.
1990	45,900	52,200	.	21	.
2000	76,100	83,500	.	19	.
2009	87,100	118,500	.	28	.
2010	88,100	122,600	.	29	.
2011	90,300	125,500	.	30	.
2012	98,300	127,400	.	25	.
2013	103,300	128,400	.	23	.
2014	110,400	129,400	.	20	.
2015	116,000	132,000	.	20	.
2016	114,800	135,300	.	22	.
2017	102,600	139,200	.	31	.
2018	104,700	145,400	.	33	.
2019	107,000	151,900	.	37	.
2020	96,300	157,600	.	57	.

County: county value. Kansas: state value. County Rank: highest county value ranked #1. (\$000): thousands of dollars. Nonmetro Kansas: Kansas total less Metropolitan Areas as defined by the Office of Management and Budget (OMB; released 3/6/2020). Per 1000: For nonmoney amounts, Per 1000=(county value / county population for the same year as the data) x 1000. \$ Per capita=(county value / county population for the same year as the data). Value= . indicates missing or suppressed data or value not calculated.

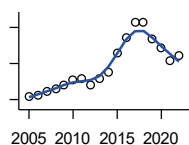
Housing

MEDIAN CONTRACT RENT (\$)



U.S. Census Bureau, Decennial Census (- 2000), (2009 -) American Community Survey five-year average ending in year shown.

Year	County	State of Kansas	Non Metro Kansas	County Rank	Per 1000 or \$ Per Capita
1980	194	219	.	24	.
1990	330	372	.	14	.
2000	446	498	.	24	.
2009	364	491	.	38	.
2010	370	507	.	41	.
2011	588	699	.	29	.
2012	633	715	.	26	.
2013	700	732	.	16	.
2014	723	748	.	15	.
2015	699	757	.	18	.
2016	671	775	.	29	.
2017	700	801	.	25	.
2018	670	831	.	41	.
2019	623	850	.	70	.
2020	619	863	.	72	.



FAIR MARKET RENT: 2 BEDROOMS

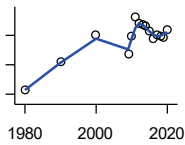
U.S. Department of Housing and Urban Development (HUD)

Year	County	State of Kansas	Non Metro Kansas	County Rank	Per 1000 or \$ Per Capita
2005	516	.	.	39	.
2006	527	.	.	41	.
2007	543	.	.	40	.
2008	558	628	.	41	.
2009	582	653	.	41	.
2010	606	678	.	43	.
2011	616	684	.	43	.
2012	584	660	.	38	.
2013	613	712	.	33	.
2014	653	746	.	35	.
2015	761	756	.	10	.
2016	841	781	.	10	.
2017	929	811	.	6	.
2018	925	815	.	4	.
2019	833	828	.	10	.
2020	785	855	.	24	.
2021	718	874	.	105	.
2022	742	879	.	105	.

County: county value. Kansas: state value. County Rank: highest county value ranked #1. (\$000): thousands of dollars. Nonmetro Kansas: Kansas total less Metropolitan Areas as defined by the Office of Management and Budget (OMB; released 3/6/2020). Per 1000: For nonmoney amounts, Per 1000=(county value / county population for the same year as the data) x 1000. \$ Per capita=(county value / county population for the same year as the data). Value= . indicates missing or suppressed data or value not calculated.

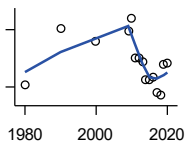
Education

POPULATION AGE 25+



U.S. Census Bureau, Decennial Census (- 2000), (2009 -) American Community Survey five-year average ending in year shown.

Year	County	State of Kansas	Non Metro Kansas	County Rank	Per 1000 or \$ Per Capita
1980	2,126	1,388,102	596,639	.	.
1990	2,318	1,565,936	608,745	.	.
2000	2,505	1,701,207	618,131	.	.
2009	2,372	1,775,427	600,188	.	.
2010	2,492	1,802,904	608,716	.	.
2011	2,626	1,822,400	610,386	.	.
2012	2,581	1,838,079	611,103	.	.
2013	2,575	1,850,010	610,374	.	.
2014	2,561	1,861,894	609,612	.	.
2015	2,527	1,869,698	606,967	.	.
2016	2,480	1,878,495	604,563	.	.
2017	2,503	1,886,741	601,076	.	.
2018	2,491	1,894,675	598,487	.	.
2019	2,482	1,902,279	595,501	.	.
2020	2,541	1,911,990	593,923	.	.



PERCENT HS GRADUATE OR HIGHER AGE 25+

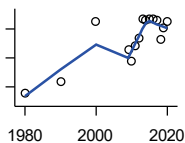
U.S. Census Bureau, Decennial Census (- 2000), (2009 -) American Community Survey five-year average ending in year shown.

Year	County	State of Kansas	Non Metro Kansas	County Rank	Per 1000 or \$ Per Capita
1980	70.2	73.3	.	48	.
1990	76.1	81.3	.	70	.
2000	74.8	86.0	.	99	.
2009	75.9	89.0	.	98	.
2010	77.2	89.2	.	99	.
2011	73.1	89.5	.	102	.
2012	73.0	89.7	.	102	.
2013	72.7	89.8	.	102	.
2014	70.8	90.0	.	102	.
2015	70.7	90.2	.	103	.
2016	71.0	90.3	.	103	.
2017	69.4	90.5	.	104	.
2018	69.1	90.7	.	104	.
2019	72.4	91.0	.	103	.
2020	72.5	91.4	.	103	.

County: county value. Kansas: state value. County Rank: highest county value ranked #1. (\$000): thousands of dollars. Nonmetro Kansas: Kansas total less Metropolitan Areas as defined by the Office of Management and Budget (OMB; released 3/6/2020). Per 1000: For nonmoney amounts, Per 1000=(county value / county population for the same year as the data) x 1000. \$ Per capita=(county value / county population for the same year as the data). Value= . indicates missing or suppressed data or value not calculated.

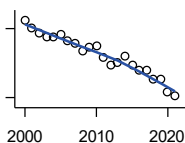
Education

PERCENT BACHELORS DEGREE OR HIGHER AGE 25+



U.S. Census Bureau, Decennial Census (- 2000), (2009 -) American Community Survey five-year average ending in year shown.

Year	County	State of Kansas	Non Metro Kansas	County Rank	Per 1000 or \$ Per Capita
1980	12.6	17.0	.	39	.
1990	13.4	21.1	.	53	.
2000	17.5	25.8	.	43	.
2009	15.6	28.8	.	86	.
2010	14.8	29.3	.	95	.
2011	15.8	29.7	.	89	.
2012	16.4	30.0	.	88	.
2013	17.7	30.3	.	79	.
2014	17.6	30.7	.	84	.
2015	17.7	31.0	.	80	.
2016	17.7	31.6	.	88	.
2017	17.6	32.3	.	88	.
2018	16.3	32.9	.	96	.
2019	17.1	33.4	.	94	.
2020	17.5	33.9	.	96	.



PUBLIC SCHOOL ENROLLMENT (FTE) SCHOOL YEAR BEGINNING...

Kansas State Department of Education

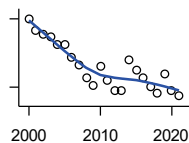
Year	County	State of Kansas	Non Metro Kansas	County Rank	Per 1000 or \$ Per Capita
2000	936.5	448,150.8	166,722.5	74	217.4
2001	905.3	447,047.1	164,365.0	74	213.2
2002	882.6	444,860.3	161,555.4	74	210.4
2003	861.6	443,620.6	159,130.2	73	204.5
2004	866.4	441,957.2	156,566.3	72	204.4
2005	872.9	442,708.4	155,197.2	71	205.4
2006	844.5	444,878.7	153,842.3	72	201.9
2007	837.2	446,831.3	152,337.1	71	200.1
2008	804.4	447,730.0	150,572.7	72	193.7
2009	817.0	453,202.5	151,246.8	71	195.1
2010	826.7	455,405.0	151,023.8	71	194.2
2011	773.8	456,000.5	150,257.9	72	182.7
2012	743.8	458,496.4	150,463.0	72	176.5
2013	750.6	461,950.0	150,420.9	72	181.9
2014	779.9	464,395.4	150,499.4	71	190.2
2015	740.2	463,504.0	149,539.3	72	181.0
2016	721.5	459,920.3	147,293.5	72	179.2
2017	720.0	477,977.9	152,096.3	73	179.1
2018	681.7	476,481.7	150,456.8	75	170.9
2019	679.9	476,525.1	150,045.2	75	171.3
2020	623.1	462,088.0	146,369.6	75	164.8
2021	605.0	463,652.4	147,500.4	76	164.9

County: county value. Kansas: state value. County Rank: highest county value ranked #1. (\$000): thousands of dollars. Nonmetro Kansas: Kansas total less Metropolitan Areas as defined by the Office of Management and Budget (OMB; released 3/6/2020). Per 1000: For nonmoney amounts, Per 1000=(county value / county population for the same year as the data) x 1000. \$ Per capita=(county value / county population for the same year as the data). Value= . indicates missing or suppressed data or value not calculated.

Education

PUPIL/TEACHER RATIO SCHOOL YEAR BEGINNING...

Kansas State Department of Education

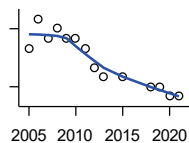


Year	County	State of Kansas	Non Metro Kansas	County Rank	Per 1000 or \$ Per Capita
2000	13.0	15.4	13.9	58	.
2001	12.5	15.3	13.8	64	.
2002	12.3	15.4	13.9	69	.
2003	12.2	15.5	13.8	71	.
2004	11.9	15.3	13.6	76	.
2005	11.9	15.0	13.4	66	.
2006	11.3	14.7	13.2	75	.
2007	11.0	14.6	13.1	85	.
2008	10.4	14.4	12.9	92	.
2009	10.1	14.8	13.2	99	.
2010	10.9	15.2	13.6	93	.
2011	10.3	15.1	13.5	95	.
2012	9.8	15.1	13.5	100	.
2013	9.8	15.1	13.5	100	.
2014	11.2	15.0	13.6	81	.
2015	10.7	15.2	13.9	92	.
2016	10.4	15.1	13.7	94	.
2017	10.0	15.5	13.9	99	.
2018	9.7	15.3	13.8	100	.
2019	10.6	15.2	13.7	88	.
2020	9.8	14.7	13.4	97	.
2021	9.6	14.8	13.5	100	.

Social Environment

CHILD CARE FACILITIES: TOTAL CHILD CARE FACILITIES

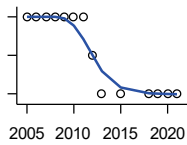
Kansas Department of Health and Environment, Bureau of Adult and Child Care



Year	County	State of Kansas	Non Metro Kansas	County Rank	Per 1000 or \$ Per Capita
2005	8	8,258	3,378	99	1.9
2006	11	8,442	3,429	86	2.6
2007	9	8,241	3,317	92	2.2
2008	10	8,011	3,150	86	2.4
2009	9	7,853	3,066	91	2.1
2010	9	7,354	2,858	88	2.1
2011	8	6,835	2,623	89	1.9
2012	6	6,346	2,409	94	1.4
2013	5	5,754	2,179	95	1.2
2015	5	5,289	2,146	94	1.2
2018	4	4,607	1,904	99	1.0
2019	4	4,287	1,774	95	1.0
2020	3	4,274	1,798	101	0.8
2021	3	4,002	1,700	99	0.8

County: county value. Kansas: state value. County Rank: highest county value ranked #1. (\$000): thousands of dollars. Nonmetro Kansas: Kansas total less Metropolitan Areas as defined by the Office of Management and Budget (OMB; released 3/6/2020). Per 1000: For nonmoney amounts, Per 1000=(county value / county population for the same year as the data) x 1000. \$ Per capita=(county value / county population for the same year as the data). Value= . indicates missing or suppressed data or value not calculated.

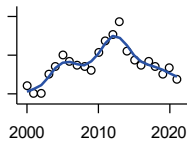
Social Environment



**CHILD CARE FACILITIES:
PRESCHOOLS**

Kansas Department of Health and Environment, Bureau of Adult and Child Care

Year	County	State of Kansas	Non Metro Kansas	County Rank	Per 1000 or \$ Per Capita
2005	2	243	140	46	0.5
2006	2	221	127	42	0.5
2007	2	208	119	42	0.5
2008	2	204	114	46	0.5
2009	2	194	107	42	0.5
2010	2	194	112	44	0.5
2011	2	209	123	47	0.5
2012	1	201	121	74	0.2
2013	0	140	84	105	0.0
2015	0	185	113	105	0.0
2018	0	150	94	105	0.0
2019	0	134	83	105	0.0
2020	0	126	78	105	0.0
2021	0	120	74	105	0.0



FOOD STAMP BENEFICIARIES

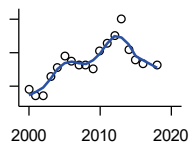
Kansas Social and Rehabilitation Services

Year	County	State of Kansas	Non Metro Kansas	County Rank	Per 1000 or \$ Per Capita
2000	121	110,619	44,825	79	28.1
2001	100	117,241	46,741	86	23.6
2002	101	131,726	52,342	90	24.1
2003	151	155,908	61,280	83	35.8
2004	170	167,971	65,852	82	40.1
2005	200	175,710	67,261	74	47.1
2006	183	182,821	67,487	80	43.8
2007	174	184,035	66,979	82	41.6
2008	171	187,377	67,160	79	41.2
2009	160	208,007	73,637	83	38.2
2010	207	259,609	90,919	84	48.6
2011	238	296,542	101,155	81	56.2
2012	254	303,257	102,478	80	60.3
2013	288	316,424	105,345	75	69.8
2014	212	301,377	100,761	85	51.7
2015	186	277,614	93,353	86	45.5
2016	173	258,412	88,343	85	43.0
2017	185	239,592	82,070	82	46.0
2018	171	219,738	75,208	83	42.9
2019	151	205,261	69,899	85	38.1
2020	166	198,457	66,721	83	43.9
2021	139	203,424	68,883	87	37.9

County: county value. Kansas: state value. County Rank: highest county value ranked #1. (\$000): thousands of dollars. Nonmetro Kansas: Kansas total less Metropolitan Areas as defined by the Office of Management and Budget (OMB; released 3/6/2020). Per 1000: For nonmoney amounts, Per 1000=(county value / county population for the same year as the data) x 1000. \$ Per capita=(county value / county population for the same year as the data). Value= . indicates missing or suppressed data or value not calculated.

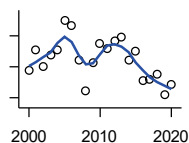
Social Environment

PERCENT OF POPULATION RECEIVING FOOD STAMPS



U.S. Dept. of Agriculture Food and Nutrition Service (1990-1997); Kansas Social and Rehabilitation Services (1998-)

Year	County	State of Kansas	Non Metro Kansas	County Rank	Per 1000 or \$ Per Capita
2000	2.8	4.1	.	79	.
2001	2.4	4.3	.	88	.
2002	2.4	4.9	.	94	.
2003	3.6	5.7	.	81	.
2004	4.1	6.2	.	76	.
2005	4.8	6.4	.	64	.
2006	4.5	6.6	.	70	.
2007	4.3	6.6	.	78	.
2008	4.3	6.7	.	72	.
2009	4.0	7.4	.	86	.
2010	5.1	9.1	.	88	.
2011	5.6	10.3	.	86	.
2012	6.0	10.5	.	79	.
2013	7.0	10.9	.	61	.
2014	5.2	10.4	.	89	.
2015	4.6	9.6	.	96	.
2016	4.3	8.9	.	94	.
2018	4.3	7.5	.	89	.



ESTIMATED NUMBER OF PEOPLE IN POVERTY

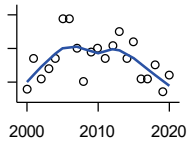
U.S. Census Bureau, Small Area Income and Poverty Estimates

Year	County	State of Kansas	Non Metro Kansas	County Rank	Per 1000 or \$ Per Capita
2000	419	235,087	98,984	78	97.3
2001	453	252,134	106,257	79	106.7
2002	426	265,673	107,542	80	101.6
2003	443	278,163	107,323	76	105.1
2004	453	297,733	111,534	76	106.9
2005	499	310,667	118,768	75	117.4
2006	492	327,102	123,700	79	117.6
2007	436	301,828	111,953	79	104.2
2008	386	307,804	113,015	80	92.9
2009	432	359,692	123,394	79	103.2
2010	463	374,677	131,502	77	108.8
2011	454	383,859	134,912	78	107.2
2012	467	392,095	133,800	77	110.8
2013	472	391,718	134,067	76	114.4
2014	436	381,506	130,213	79	106.3
2015	450	366,069	123,073	76	110.1
2016	402	343,773	121,314	80	99.9
2017	404	335,371	116,854	79	100.5
2018	413	336,892	114,490	80	103.5
2019	379	319,931	110,692	79	95.5
2020	396	300,931	100,998	74	104.8

County: county value. Kansas: state value. County Rank: highest county value ranked #1. (\$000): thousands of dollars. Nonmetro Kansas: Kansas total less Metropolitan Areas as defined by the Office of Management and Budget (OMB; released 3/6/2020). Per 1000: For nonmoney amounts, Per 1000=(county value / county population for the same year as the data) x 1000. \$ Per capita=(county value / county population for the same year as the data). Value= . indicates missing or suppressed data or value not calculated.

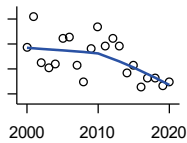
Social Environment

ESTIMATED % OF PEOPLE IN POVERTY



U.S. Census Bureau, Small Area Income and Poverty Estimates

Year	County	State of Kansas	Non Metro Kansas	County Rank	Per 1000 or \$ Per Capita
2000	9.8	8.9	.	62	.
2001	10.7	9.5	.	62	.
2002	10.1	10.0	.	76	.
2003	10.4	10.4	.	64	.
2004	10.7	11.1	.	56	.
2005	11.9	11.7	.	58	.
2006	11.9	12.2	.	66	.
2007	11.0	11.2	.	63	.
2008	10.0	11.3	.	80	.
2009	10.9	13.2	.	79	.
2010	11.0	13.5	.	79	.
2011	10.7	13.8	.	89	.
2012	11.1	14.0	.	76	.
2013	11.5	13.9	.	73	.
2014	10.7	13.5	.	86	.
2015	11.2	12.9	.	67	.
2016	10.1	12.2	.	90	.
2017	10.1	11.9	.	89	.
2018	10.5	11.9	.	86	.
2019	9.7	11.3	.	88	.
2020	10.2	10.6	.	65	.



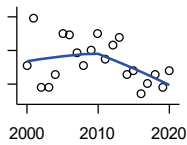
EST. NUMBER OF RELATED CHILDREN AGE 5 TO 17 IN FAMILIES IN POVERTY

U.S. Census Bureau, Small Area Income and Poverty Estimates

Year	County	State of Kansas	Non Metro Kansas	County Rank	Per 1000 or \$ Per Capita
2000	137	50,388	21,854	58	31.8
2001	162	53,755	23,094	54	38.2
2002	125	52,453	21,423	60	29.8
2003	121	55,419	21,809	61	28.7
2004	124	59,392	22,313	58	29.3
2005	145	60,203	24,244	56	34.1
2006	146	64,427	25,326	58	34.9
2007	123	61,149	23,639	60	29.4
2008	110	59,842	22,661	63	26.5
2009	136	71,850	26,251	61	32.5
2010	154	81,077	29,804	58	36.2
2011	138	82,311	29,306	64	32.6
2012	144	87,594	29,781	62	34.2
2013	138	84,325	29,253	66	33.4
2014	117	83,873	29,354	72	28.5
2015	123	78,192	27,482	67	30.1
2016	106	67,810	25,074	73	26.3
2017	113	67,873	25,032	68	28.1
2018	113	68,153	24,928	70	28.3
2019	107	64,613	23,117	67	27.0
2020	110	59,792	21,143	65	29.1

County: county value. Kansas: state value. County Rank: highest county value ranked #1. (\$000): thousands of dollars. Nonmetro Kansas: Kansas total less Metropolitan Areas as defined by the Office of Management and Budget (OMB; released 3/6/2020). Per 1000: For nonmoney amounts, Per 1000=(county value / county population for the same year as the data) x 1000. \$ Per capita=(county value / county population for the same year as the data). Value= . indicates missing or suppressed data or value not calculated.

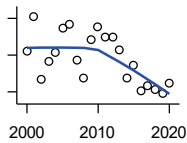
Social Environment



EST. % OF RELATED CHILDREN AGE 5 TO 17 IN FAMILIES IN POVERTY

U.S. Census Bureau, Small Area Income and Poverty Estimates

Year	County	State of Kansas	Non Metro Kansas	County Rank	Per 1000 or \$ Per Capita
2000	14.1	10.0	.	30	.
2001	16.9	10.8	.	13	.
2002	12.8	10.5	.	39	.
2003	12.8	11.3	.	45	.
2004	13.6	12.5	.	39	.
2005	16.0	12.8	.	33	.
2006	15.9	13.2	.	41	.
2007	14.9	12.6	.	44	.
2008	14.1	12.3	.	54	.
2009	15.0	14.7	.	59	.
2010	16.0	15.9	.	58	.
2011	14.5	16.2	.	74	.
2012	15.3	17.2	.	66	.
2013	15.8	16.5	.	59	.
2014	13.6	16.4	.	77	.
2015	13.8	15.3	.	73	.
2016	12.4	13.2	.	81	.
2017	13.0	13.4	.	82	.
2018	13.6	13.5	.	78	.
2019	12.8	12.9	.	73	.
2020	13.8	11.9	.	53	.



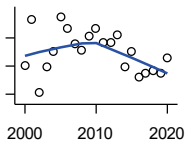
ESTIMATED NUMBER UNDER 18 IN POVERTY

U.S. Census Bureau, Small Area Income and Poverty Estimates

Year	County	State of Kansas	Non Metro Kansas	County Rank	Per 1000 or \$ Per Capita
2000	204	82,619	34,843	61	47.4
2001	242	87,487	36,724	57	57.0
2002	174	84,181	32,870	61	41.5
2003	193	93,896	36,004	61	45.8
2004	203	98,641	36,272	58	47.9
2005	230	100,254	39,118	57	54.1
2006	233	105,193	41,054	58	55.7
2007	194	100,242	37,881	60	46.4
2008	175	100,146	37,552	63	42.1
2009	217	118,187	42,682	61	51.8
2010	231	129,009	46,428	60	54.3
2011	219	133,478	46,832	63	51.7
2012	219	135,261	46,294	62	52.0
2013	206	131,251	44,952	67	49.9
2014	175	125,562	43,933	72	42.7
2015	189	119,994	41,828	67	46.2
2016	161	100,996	37,387	71	40.0
2017	166	102,858	37,955	68	41.3
2018	163	102,616	36,991	72	40.9
2019	159	97,920	34,797	68	40.1
2020	169	88,491	30,767	62	44.7

County: county value. Kansas: state value. County Rank: highest county value ranked #1. (\$000): thousands of dollars. Nonmetro Kansas: Kansas total less Metropolitan Areas as defined by the Office of Management and Budget (OMB; released 3/6/2020). Per 1000: For nonmoney amounts, Per 1000=(county value / county population for the same year as the data) x 1000. \$ Per capita=(county value / county population for the same year as the data). Value= . indicates missing or suppressed data or value not calculated.

Social Environment



ESTIMATED PERCENT UNDER 18 IN POVERTY

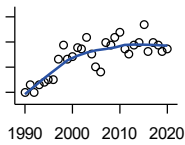
U.S. Census Bureau, Small Area Income and Poverty Estimates

Year	County	State of Kansas	Non Metro Kansas	County Rank	Per 1000 or \$ Per Capita
2000	15.0	11.9	.	45	.
2001	18.3	12.7	.	22	.
2002	13.1	12.1	.	57	.
2003	14.9	13.8	.	50	.
2004	16.0	14.6	.	41	.
2005	18.5	15.2	.	32	.
2006	17.7	15.4	.	46	.
2007	16.6	14.7	.	50	.
2008	16.1	14.6	.	61	.
2009	17.1	17.1	.	62	.
2010	17.7	18.1	.	59	.
2011	16.7	18.8	.	74	.
2012	16.7	19.0	.	66	.
2013	17.2	18.4	.	63	.
2014	14.9	17.6	.	77	.
2015	16.0	16.9	.	64	.
2016	14.2	14.3	.	75	.
2017	14.5	14.7	.	75	.
2018	14.7	14.8	.	79	.
2019	14.5	14.3	.	70	.
2020	15.6	13.0	.	41	.

County: county value. Kansas: state value. County Rank: highest county value ranked #1. (\$000): thousands of dollars. Nonmetro Kansas: Kansas total less Metropolitan Areas as defined by the Office of Management and Budget (OMB; released 3/6/2020). Per 1000: For nonmoney amounts, Per 1000=(county value / county population for the same year as the data) x 1000. \$ Per capita=(county value / county population for the same year as the data). Value= . indicates missing or suppressed data or value not calculated.

Business

ESTABLISHMENTS TOTAL COUNTY BUSINESS PATTERNS



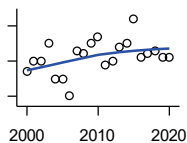
U.S. Census Bureau, County Business Patterns. Beginning with the 2017 data, any tabulation with fewer than 3 establishments were omitted from the release. Data for these establishments are included in the broader total.

Year	County	State of Kansas	Non Metro Kansas	County Rank	Per 1000 or \$ Per Capita
1990	100	65,858	26,802	89	25.7
1991	103	65,941	26,750	89	26.2
1992	100	67,630	27,229	92	25.2
1993	103	68,930	27,655	91	25.7
1994	104	69,822	27,763	91	25.7
1995	105	70,894	28,111	89	25.9
1996	105	72,017	28,353	90	25.8
1997	113	73,924	28,884	87	27.0
1998	119	74,019	28,749	83	28.6
1999	113	74,486	28,536	85	26.5
2000	114	74,939	28,475	84	26.5
2001	118	74,565	28,282	81	27.8
2002	117	75,077	28,183	81	27.9
2003	122	74,972	27,998	80	29.0
2004	115	75,827	28,009	80	27.1
2005	110	76,173	27,830	82	25.9
2006	108	76,446	27,653	82	25.8
2007	120	77,157	27,736	81	28.7
2008	119	76,096	27,314	81	28.7
2009	122	74,698	26,839	80	29.1
2010	124	74,301	26,739	79	29.1
2011	117	73,598	26,555	80	27.6
2012	115	73,944	26,534	80	27.3
2013	119	73,816	26,393	79	28.8
2014	120	74,055	26,292	79	29.3
2015	127	74,526	26,355	77	31.1
2016	116	74,884	26,172	80	28.8
2017	120	74,947	26,093	79	29.9
2018	119	74,559	25,802	78	29.8
2019	116	74,292	25,536	79	29.2
2020	117	73,982	25,178	78	31.0

County: county value. Kansas: state value. County Rank: highest county value ranked #1. (\$000): thousands of dollars. Nonmetro Kansas: Kansas total less Metropolitan Areas as defined by the Office of Management and Budget (OMB; released 3/6/2020). Per 1000: For nonmoney amounts, Per 1000=(county value / county population for the same year as the data) x 1000. \$ Per capita=(county value / county population for the same year as the data). Value= . indicates missing or suppressed data or value not calculated.

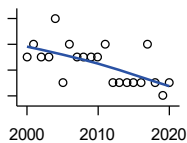
Business

**ESTABLISHMENTS: 1-19
EMPLOYEES**



U.S. Census Bureau, County Business Patterns. Beginning with the 2017 data, any tabulation with fewer than 3 establishments were omitted from the release. Data for these establishments are included in the broader total.

Year	County	State of Kansas	Non Metro Kansas	County Rank	Per 1000 or \$ Per Capita
2000	107	64,527	25,381	83	24.8
2001	110	64,176	25,248	82	25.9
2002	110	64,886	25,208	81	26.2
2003	115	64,714	25,020	80	27.3
2004	105	65,554	24,995	81	24.8
2005	105	65,796	24,839	82	24.7
2006	100	65,764	24,589	83	23.9
2007	113	66,446	24,701	81	27.0
2008	112	65,322	24,257	81	27.0
2009	115	64,128	23,851	80	27.5
2010	117	64,015	23,857	78	27.5
2011	109	63,251	23,571	80	25.7
2012	110	63,519	23,575	79	26.1
2013	114	63,197	23,396	78	27.6
2014	115	63,113	23,229	79	28.0
2015	122	63,280	23,227	76	29.8
2016	111	63,630	23,117	80	27.6
2017	112	63,619	23,022	79	27.9
2018	113	63,233	22,745	77	28.3
2019	111	62,904	22,489	77	28.0
2020	111	62,634	22,173	77	29.4



**ESTABLISHMENTS: 20-99
EMPLOYEES**

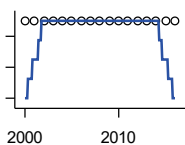
U.S. Census Bureau, County Business Patterns. Beginning with the 2017 data, any tabulation with fewer than 3 establishments were omitted from the release. Data for these establishments are included in the broader total.

Year	County	State of Kansas	Non Metro Kansas	County Rank	Per 1000 or \$ Per Capita
2000	6	8,714	2,653	82	1.4
2001	7	8,692	2,593	75	1.6
2002	6	8,582	2,554	82	1.4
2003	6	8,642	2,568	83	1.4
2004	9	8,658	2,590	70	2.1
2005	4	8,685	2,553	96	0.9
2006	7	8,922	2,612	79	1.7
2007	6	8,938	2,574	83	1.4
2008	6	8,939	2,587	84	1.4
2009	6	8,848	2,551	79	1.4
2010	6	8,612	2,454	82	1.4
2011	7	8,668	2,540	79	1.7
2012	4	8,700	2,500	98	0.9
2013	4	8,870	2,541	95	1.0
2014	4	9,121	2,590	95	1.0
2015	4	9,374	2,664	94	1.0
2016	4	9,412	2,596	96	1.0
2017	7	9,487	2,638	74	1.7
2018	4	9,485	2,621	92	1.0
2019	3	9,485	2,591	95	0.8
2020	4	9,471	2,545	87	1.1

County: county value. Kansas: state value. County Rank: highest county value ranked #1. (\$000): thousands of dollars. Nonmetro Kansas: Kansas total less Metropolitan Areas as defined by the Office of Management and Budget (OMB; released 3/6/2020). Per 1000: For nonmoney amounts, Per 1000=(county value / county population for the same year as the data) x 1000. \$ Per capita=(county value / county population for the same year as the data). Value= . indicates missing or suppressed data or value not calculated.

Business

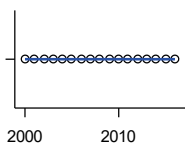
ESTABLISHMENTS: 100-499 EMPLOYEES



U.S. Census Bureau, County Business Patterns. Beginning with the 2017 data, any tabulation with fewer than 3 establishments were omitted from the release. Data for these establishments are included in the broader total.

Year	County	State of Kansas	Non Metro Kansas	County Rank	Per 1000 or \$ Per Capita
2000	1	1,555	409	82	0.2
2001	1	1,555	406	86	0.2
2002	1	1,464	386	81	0.2
2003	1	1,470	378	83	0.2
2004	1	1,463	388	82	0.2
2005	1	1,537	400	82	0.2
2006	1	1,598	407	83	0.2
2007	1	1,602	416	87	0.2
2008	1	1,653	421	86	0.2
2009	1	1,551	394	86	0.2
2010	1	1,513	382	85	0.2
2011	1	1,523	395	86	0.2
2012	1	1,567	410	85	0.2
2013	1	1,581	407	85	0.2
2014	1	1,641	421	86	0.2
2015	1	1,693	414	86	0.2
2016	1	1,671	406	84	0.2

ESTABLISHMENTS: 500 OR MORE EMPLOYEES



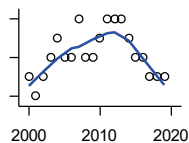
U.S. Census Bureau, County Business Patterns. Beginning with the 2017 data, any tabulation with fewer than 3 establishments were omitted from the release. Data for these establishments are included in the broader total.

Year	County	State of Kansas	Non Metro Kansas	County Rank	Per 1000 or \$ Per Capita
2000	0	143	32	105	0.0
2001	0	142	35	105	0.0
2002	0	145	35	105	0.0
2003	0	146	32	105	0.0
2004	0	152	36	105	0.0
2005	0	155	38	105	0.0
2006	0	162	45	105	0.0
2007	0	171	45	105	0.0
2008	0	182	49	105	0.0
2009	0	171	43	105	0.0
2010	0	161	46	105	0.0
2011	0	156	49	105	0.0
2012	0	158	49	105	0.0
2013	0	168	49	105	0.0
2014	0	180	52	105	0.0
2015	0	179	50	105	0.0
2016	0	171	53	105	0.0

County: county value. Kansas: state value. County Rank: highest county value ranked #1. (\$000): thousands of dollars. Nonmetro Kansas: Kansas total less Metropolitan Areas as defined by the Office of Management and Budget (OMB; released 3/6/2020). Per 1000: For nonmoney amounts, Per 1000=(county value / county population for the same year as the data) x 1000. \$ Per capita=(county value / county population for the same year as the data). Value= . indicates missing or suppressed data or value not calculated.

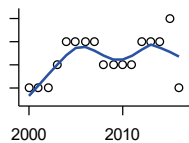
Business

ESTABLISHMENTS: FORESTRY, FISHING, HUNTING, AND AG SUPPORT



U.S. Census Bureau, County Business Patterns. Beginning with the 2017 data, any tabulation with fewer than 3 establishments were omitted from the release. Data for these establishments are included in the broader total.

Year	County	State of Kansas	Non Metro Kansas	County Rank	Per 1000 or \$ Per Capita
2000	4	190	149	16	0.9
2001	3	217	168	32	0.7
2002	4	224	176	21	1.0
2003	5	217	173	12	1.2
2004	6	211	165	8	1.4
2005	5	188	148	10	1.2
2006	5	193	158	12	1.2
2007	7	212	170	4	1.7
2008	5	197	158	9	1.2
2009	5	191	154	8	1.2
2010	6	192	161	6	1.4
2011	7	193	157	3	1.7
2012	7	204	164	4	1.7
2013	7	208	166	6	1.7
2014	6	194	152	6	1.5
2015	5	192	149	10	1.2
2016	5	181	142	10	1.2
2017	4	194	.	14	1.0
2018	4	195	.	15	1.0
2019	4	185	.	13	1.0



ESTABLISHMENTS: MINING

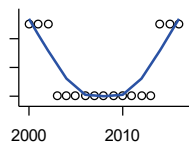
U.S. Census Bureau, County Business Patterns. Beginning with the 2017 data, any tabulation with fewer than 3 establishments were omitted from the release. Data for these establishments are included in the broader total.

Year	County	State of Kansas	Non Metro Kansas	County Rank	Per 1000 or \$ Per Capita
2000	2	868	619	70	0.5
2001	2	878	622	69	0.5
2002	2	847	615	68	0.5
2003	3	864	633	52	0.7
2004	4	880	647	47	0.9
2005	4	941	695	48	0.9
2006	4	991	734	48	1.0
2007	4	1,000	759	48	1.0
2008	3	1,047	799	60	0.7
2009	3	1,016	772	58	0.7
2010	3	1,009	762	56	0.7
2011	3	1,013	763	55	0.7
2012	4	1,048	789	48	0.9
2013	4	1,060	802	51	1.0
2014	4	1,102	828	51	1.0
2015	5	1,069	810	45	1.2
2016	2	990	747	77	0.5

County: county value. Kansas: state value. County Rank: highest county value ranked #1. (\$000): thousands of dollars. Nonmetro Kansas: Kansas total less Metropolitan Areas as defined by the Office of Management and Budget (OMB; released 3/6/2020). Per 1000: For nonmoney amounts, Per 1000=(county value / county population for the same year as the data) x 1000. \$ Per capita=(county value / county population for the same year as the data). Value= . indicates missing or suppressed data or value not calculated.

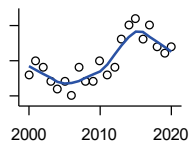
Business

ESTABLISHMENTS: UTILITIES



U.S. Census Bureau, County Business Patterns. Beginning with the 2017 data, any tabulation with fewer than 3 establishments were omitted from the release. Data for these establishments are included in the broader total.

Year	County	State of Kansas	Non Metro Kansas	County Rank	Per 1000 or \$ Per Capita
2000	1	274	192	96	0.2
2001	1	290	204	96	0.2
2002	1	278	195	93	0.2
2003	0	268	180	105	0.0
2004	0	247	164	105	0.0
2005	0	254	172	105	0.0
2006	0	248	169	105	0.0
2007	0	222	156	105	0.0
2008	0	244	166	105	0.0
2009	0	222	152	105	0.0
2010	0	197	129	105	0.0
2011	0	230	156	105	0.0
2012	0	232	156	105	0.0
2013	0	234	159	105	0.0
2014	1	232	160	89	0.2
2015	1	237	165	88	0.2
2016	1	245	171	90	0.2



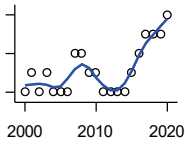
ESTABLISHMENTS: CONSTRUCTION

U.S. Census Bureau, County Business Patterns. Beginning with the 2017 data, any tabulation with fewer than 3 establishments were omitted from the release. Data for these establishments are included in the broader total.

Year	County	State of Kansas	Non Metro Kansas	County Rank	Per 1000 or \$ Per Capita
2000	8	7,703	2,616	89	1.9
2001	10	7,449	2,520	80	2.4
2002	9	7,519	2,482	86	2.1
2003	7	7,722	2,521	94	1.7
2004	6	7,887	2,518	95	1.4
2005	7	8,032	2,515	92	1.6
2006	5	8,031	2,494	95	1.2
2007	9	8,057	2,547	82	2.2
2008	7	7,831	2,522	92	1.7
2009	7	7,342	2,452	87	1.7
2010	10	7,064	2,394	80	2.3
2011	8	6,774	2,361	86	1.9
2012	9	6,741	2,393	85	2.1
2013	13	6,802	2,394	72	3.2
2014	15	6,920	2,383	72	3.7
2015	16	7,014	2,377	66	3.9
2016	13	6,988	2,343	73	3.2
2017	15	7,031	2,316	66	3.7
2018	12	7,124	2,285	73	3.0
2019	11	7,060	2,242	75	2.8
2020	12	7,089	2,249	72	3.2

County: county value. Kansas: state value. County Rank: highest county value ranked #1. (\$000): thousands of dollars. Nonmetro Kansas: Kansas total less Metropolitan Areas as defined by the Office of Management and Budget (OMB; released 3/6/2020). Per 1000: For nonmoney amounts, Per 1000=(county value / county population for the same year as the data) x 1000. \$ Per capita=(county value / county population for the same year as the data). Value= . indicates missing or suppressed data or value not calculated.

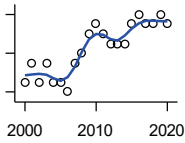
Business



**ESTABLISHMENTS:
MANUFACTURING**

U.S. Census Bureau, County Business Patterns. Beginning with the 2017 data, any tabulation with fewer than 3 establishments were omitted from the release. Data for these establishments are included in the broader total.

Year	County	State of Kansas	Non Metro Kansas	County Rank	Per 1000 or \$ Per Capita
2000	3	3,229	1,316	92	0.7
2001	4	3,240	1,323	82	0.9
2002	3	3,181	1,289	91	0.7
2003	4	3,159	1,291	88	0.9
2004	3	3,179	1,313	93	0.7
2005	3	3,128	1,278	89	0.7
2006	3	3,165	1,290	88	0.7
2007	5	3,184	1,316	83	1.2
2008	5	3,171	1,297	80	1.2
2009	4	3,026	1,240	83	1.0
2010	4	2,955	1,222	82	0.9
2011	3	2,877	1,193	90	0.7
2012	3	2,889	1,197	88	0.7
2013	3	2,836	1,165	85	0.7
2014	3	2,831	1,168	85	0.7
2015	4	2,817	1,161	82	1.0
2016	5	2,791	1,150	77	1.2
2017	6	2,760	1,147	70	1.5
2018	6	2,725	1,126	72	1.5
2019	6	2,695	1,111	71	1.5
2020	7	2,673	1,103	61	1.9



**ESTABLISHMENTS: WHOLESALE
TRADE**

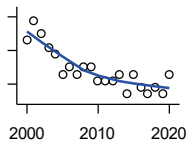
U.S. Census Bureau, County Business Patterns. Beginning with the 2017 data, any tabulation with fewer than 3 establishments were omitted from the release. Data for these establishments are included in the broader total.

Year	County	State of Kansas	Non Metro Kansas	County Rank	Per 1000 or \$ Per Capita
2000	11	4,876	1,776	72	2.6
2001	13	4,811	1,769	61	3.1
2002	11	4,719	1,750	71	2.6
2003	13	4,590	1,637	61	3.1
2004	11	4,553	1,634	70	2.6
2005	11	4,541	1,618	72	2.6
2006	10	4,517	1,596	77	2.4
2007	13	4,555	1,629	58	3.1
2008	14	4,501	1,622	55	3.4
2009	16	4,437	1,614	46	3.8
2010	17	4,432	1,612	46	4.0
2011	16	4,400	1,660	48	3.8
2012	15	4,563	1,755	58	3.6
2013	15	4,501	1,741	54	3.6
2014	15	4,497	1,746	54	3.7
2015	17	4,459	1,755	48	4.2
2016	18	4,457	1,732	47	4.5
2017	17	4,436	1,774	49	4.2
2018	17	4,330	1,727	46	4.3
2019	18	4,291	1,713	44	4.5
2020	17	4,191	1,677	44	4.5

County: county value. Kansas: state value. County Rank: highest county value ranked #1. (\$000): thousands of dollars. Nonmetro Kansas: Kansas total less Metropolitan Areas as defined by the Office of Management and Budget (OMB; released 3/6/2020). Per 1000: For nonmoney amounts, Per 1000=(county value / county population for the same year as the data) x 1000. \$ Per capita=(county value / county population for the same year as the data). Value= . indicates missing or suppressed data or value not calculated.

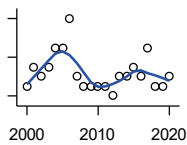
Business

ESTABLISHMENTS: RETAIL TRADE



U.S. Census Bureau, County Business Patterns. Beginning with the 2017 data, any tabulation with fewer than 3 establishments were omitted from the release. Data for these establishments are included in the broader total.

Year	County	State of Kansas	Non Metro Kansas	County Rank	Per 1000 or \$ Per Capita
2000	19	12,261	5,240	89	4.4
2001	22	12,206	5,207	83	5.2
2002	20	11,980	5,082	87	4.8
2003	18	11,834	5,049	91	4.3
2004	17	11,748	4,967	93	4.0
2005	14	11,562	4,834	96	3.3
2006	15	11,367	4,702	93	3.6
2007	14	11,306	4,653	94	3.3
2008	15	10,978	4,494	90	3.6
2009	15	10,760	4,372	91	3.6
2010	13	10,727	4,346	93	3.1
2011	13	10,655	4,289	96	3.1
2012	13	10,585	4,202	93	3.1
2013	14	10,433	4,147	90	3.4
2014	11	10,391	4,070	97	2.7
2015	14	10,327	4,061	87	3.4
2016	12	10,197	3,965	92	3.0
2017	11	10,074	3,885	95	2.7
2018	12	9,866	3,797	92	3.0
2019	11	9,762	3,750	95	2.8
2020	14	9,591	3,666	88	3.7



ESTABLISHMENTS: TRANSPORTATION & WAREHOUSING

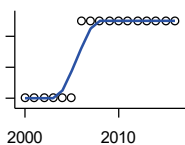
U.S. Census Bureau, County Business Patterns. Beginning with the 2017 data, any tabulation with fewer than 3 establishments were omitted from the release. Data for these establishments are included in the broader total.

Year	County	State of Kansas	Non Metro Kansas	County Rank	Per 1000 or \$ Per Capita
2000	7	2,474	1,293	79	1.6
2001	9	2,463	1,298	73	2.1
2002	8	2,461	1,278	76	1.9
2003	9	2,576	1,297	72	2.1
2004	11	2,651	1,324	62	2.6
2005	11	2,632	1,326	61	2.6
2006	14	2,626	1,295	51	3.3
2007	8	2,664	1,314	79	1.9
2008	7	2,675	1,329	80	1.7
2009	7	2,635	1,313	81	1.7
2010	7	2,615	1,313	80	1.6
2011	7	2,579	1,285	78	1.7
2012	6	2,519	1,243	84	1.4
2013	8	2,492	1,226	70	1.9
2014	8	2,518	1,240	71	2.0
2015	9	2,554	1,257	63	2.2
2016	8	2,567	1,241	66	2.0
2017	11	2,640	1,245	53	2.7
2018	7	2,627	1,238	72	1.8
2019	7	2,615	1,209	75	1.8
2020	8	2,589	1,179	66	2.1

County: county value. Kansas: state value. County Rank: highest county value ranked #1. (\$000): thousands of dollars. Nonmetro Kansas: Kansas total less Metropolitan Areas as defined by the Office of Management and Budget (OMB; released 3/6/2020). Per 1000: For nonmoney amounts, Per 1000=(county value / county population for the same year as the data) x 1000. \$ Per capita=(county value / county population for the same year as the data). Value= . indicates missing or suppressed data or value not calculated.

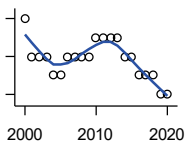
Business

ESTABLISHMENTS: INFORMATION



U.S. Census Bureau, County Business Patterns. Beginning with the 2017 data, any tabulation with fewer than 3 establishments were omitted from the release. Data for these establishments are included in the broader total.

Year	County	State of Kansas	Non Metro Kansas	County Rank	Per 1000 or \$ Per Capita
2000	0	1,542	578	105	0.0
2001	0	1,556	566	105	0.0
2002	0	1,517	551	105	0.0
2003	0	1,516	564	105	0.0
2004	0	1,518	556	105	0.0
2005	0	1,519	536	105	0.0
2006	1	1,549	559	102	0.2
2007	1	1,504	527	102	0.2
2008	1	1,468	522	101	0.2
2009	1	1,420	510	101	0.2
2010	1	1,437	527	102	0.2
2011	1	1,428	537	101	0.2
2012	1	1,387	515	102	0.2
2013	1	1,337	487	102	0.2
2014	1	1,335	496	103	0.2
2015	1	1,359	510	103	0.2
2016	1	1,431	537	103	0.2



ESTABLISHMENTS: FINANCE & INSURANCE

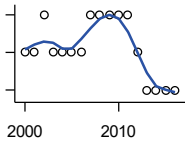
U.S. Census Bureau, County Business Patterns. Beginning with the 2017 data, any tabulation with fewer than 3 establishments were omitted from the release. Data for these establishments are included in the broader total.

Year	County	State of Kansas	Non Metro Kansas	County Rank	Per 1000 or \$ Per Capita
2000	8	5,209	1,848	87	1.9
2001	6	5,178	1,828	95	1.4
2002	6	5,496	1,911	94	1.4
2003	6	5,569	1,907	95	1.4
2004	5	5,572	1,913	99	1.2
2005	5	5,708	1,964	98	1.2
2006	6	5,877	1,976	96	1.4
2007	6	6,017	2,030	100	1.4
2008	6	6,010	2,023	98	1.4
2009	6	5,933	1,994	98	1.4
2010	7	5,872	1,975	94	1.6
2011	7	5,854	1,985	93	1.7
2012	7	5,993	2,024	93	1.7
2013	7	5,903	1,993	92	1.7
2014	6	5,894	2,000	99	1.5
2015	6	5,932	1,998	100	1.5
2016	5	6,022	2,021	103	1.2
2017	5	6,026	2,007	103	1.2
2018	5	6,023	1,997	101	1.3
2019	4	5,953	1,977	105	1.0
2020	4	5,926	1,969	105	1.1

County: county value. Kansas: state value. County Rank: highest county value ranked #1. (\$000): thousands of dollars. Nonmetro Kansas: Kansas total less Metropolitan Areas as defined by the Office of Management and Budget (OMB; released 3/6/2020). Per 1000: For nonmoney amounts, Per 1000=(county value / county population for the same year as the data) x 1000. \$ Per capita=(county value / county population for the same year as the data). Value= . indicates missing or suppressed data or value not calculated.

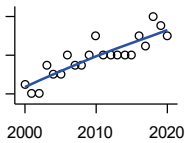
Business

ESTABLISHMENTS: REAL ESTATE, RENTAL, AND LEASING



U.S. Census Bureau, County Business Patterns. Beginning with the 2017 data, any tabulation with fewer than 3 establishments were omitted from the release. Data for these establishments are included in the broader total.

Year	County	State of Kansas	Non Metro Kansas	County Rank	Per 1000 or \$ Per Capita
2000	1	2,733	687	91	0.2
2001	1	2,849	724	92	0.2
2002	2	2,952	735	78	0.5
2003	1	3,007	727	93	0.2
2004	1	3,108	713	93	0.2
2005	1	3,203	727	90	0.2
2006	1	3,268	736	91	0.2
2007	2	3,286	721	71	0.5
2008	2	3,239	738	73	0.5
2009	2	3,122	723	70	0.5
2010	2	3,050	708	75	0.5
2011	2	3,002	692	74	0.5
2012	1	2,981	691	88	0.2
2013	0	3,046	717	105	0.0
2014	0	3,135	738	105	0.0
2015	0	3,179	744	105	0.0
2016	0	3,293	757	105	0.0



ESTABLISHMENTS: PROFESSIONAL, SCIENTIFIC, AND TECHNICAL SERVICES

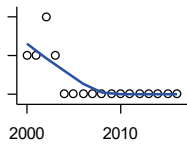
U.S. Census Bureau, County Business Patterns. Beginning with the 2017 data, any tabulation with fewer than 3 establishments were omitted from the release. Data for these establishments are included in the broader total.

Year	County	State of Kansas	Non Metro Kansas	County Rank	Per 1000 or \$ Per Capita
2000	5	6,424	1,690	95	1.2
2001	4	6,492	1,665	101	0.9
2002	4	6,719	1,704	100	1.0
2003	7	6,793	1,735	79	1.7
2004	6	7,025	1,730	89	1.4
2005	6	7,087	1,711	88	1.4
2006	8	7,231	1,736	77	1.9
2007	7	7,329	1,729	83	1.7
2008	7	7,133	1,671	81	1.7
2009	8	7,122	1,676	76	1.9
2010	10	7,172	1,680	68	2.3
2011	8	7,115	1,668	76	1.9
2012	8	7,122	1,681	77	1.9
2013	8	7,129	1,698	77	1.9
2014	8	7,206	1,682	79	2.0
2015	8	7,184	1,687	75	2.0
2016	10	7,146	1,659	67	2.5
2017	9	7,224	1,679	69	2.2
2018	12	7,138	1,655	59	3.0
2019	11	7,119	.	62	2.8
2020	10	7,117	.	66	2.6

County: county value. Kansas: state value. County Rank: highest county value ranked #1. (\$000): thousands of dollars. Nonmetro Kansas: Kansas total less Metropolitan Areas as defined by the Office of Management and Budget (OMB; released 3/6/2020). Per 1000: For nonmoney amounts, Per 1000=(county value / county population for the same year as the data) x 1000. \$ Per capita=(county value / county population for the same year as the data). Value= . indicates missing or suppressed data or value not calculated.

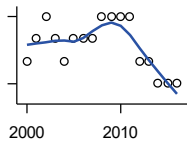
Business

ESTABLISHMENTS: MANAGEMENT OF COMPANIES AND ENTERPRISES



U.S. Census Bureau, County Business Patterns. Beginning with the 2017 data, any tabulation with fewer than 3 establishments were omitted from the release. Data for these establishments are included in the broader total.

Year	County	State of Kansas	Non Metro Kansas	County Rank	Per 1000 or \$ Per Capita
2000	1	622	145	68	0.2
2001	1	593	141	62	0.2
2002	2	597	152	41	0.5
2003	1	561	135	59	0.2
2004	0	569	133	105	0.0
2005	0	543	127	105	0.0
2006	0	542	131	105	0.0
2007	0	550	133	105	0.0
2008	0	553	139	105	0.0
2009	0	575	136	105	0.0
2010	0	567	131	105	0.0
2011	0	552	134	105	0.0
2012	0	593	135	105	0.0
2013	0	590	135	105	0.0
2014	0	603	136	105	0.0
2015	0	613	140	105	0.0
2016	0	655	171	105	0.0



ESTABLISHMENTS: ADMIN, SUPPORT, WASTE MGMT., AND REMEDIATION

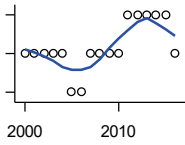
U.S. Census Bureau, County Business Patterns. Beginning with the 2017 data, any tabulation with fewer than 3 establishments were omitted from the release. Data for these establishments are included in the broader total.

Year	County	State of Kansas	Non Metro Kansas	County Rank	Per 1000 or \$ Per Capita
2000	3	3,307	871	81	0.7
2001	4	3,421	913	72	0.9
2002	5	3,232	882	66	1.2
2003	4	3,189	858	75	0.9
2004	3	3,301	891	79	0.7
2005	4	3,342	896	73	0.9
2006	4	3,395	886	74	1.0
2007	4	3,522	921	73	1.0
2008	5	3,587	932	64	1.2
2009	5	3,505	904	67	1.2
2010	5	3,494	897	68	1.2
2011	5	3,447	903	69	1.2
2012	3	3,462	891	84	0.7
2013	3	3,489	904	83	0.7
2014	2	3,569	933	89	0.5
2015	2	3,630	964	91	0.5
2016	2	3,705	987	90	0.5

County: county value. Kansas: state value. County Rank: highest county value ranked #1. (\$000): thousands of dollars. Nonmetro Kansas: Kansas total less Metropolitan Areas as defined by the Office of Management and Budget (OMB; released 3/6/2020). Per 1000: For nonmoney amounts, Per 1000=(county value / county population for the same year as the data) x 1000. \$ Per capita=(county value / county population for the same year as the data). Value= . indicates missing or suppressed data or value not calculated.

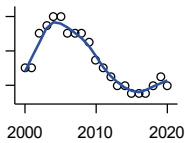
Business

ESTABLISHMENTS: EDUCATIONAL SERVICES



U.S. Census Bureau, County Business Patterns. Beginning with the 2017 data, any tabulation with fewer than 3 establishments were omitted from the release. Data for these establishments are included in the broader total.

Year	County	State of Kansas	Non Metro Kansas	County Rank	Per 1000 or \$ Per Capita
2000	1	604	155	70	0.2
2001	1	625	168	71	0.2
2002	1	666	165	70	0.2
2003	1	663	173	73	0.2
2004	1	690	173	72	0.2
2005	0	699	168	105	0.0
2006	0	698	175	105	0.0
2007	1	691	165	68	0.2
2008	1	692	158	67	0.2
2009	1	690	150	66	0.2
2010	1	700	149	68	0.2
2011	2	711	150	43	0.5
2012	2	724	145	44	0.5
2013	2	735	153	43	0.5
2014	2	722	152	45	0.5
2015	2	754	152	45	0.5
2016	1	728	150	66	0.2



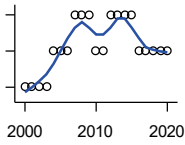
ESTABLISHMENTS: HEALTH CARE AND SOCIAL ASSISTANCE

U.S. Census Bureau, County Business Patterns. Beginning with the 2017 data, any tabulation with fewer than 3 establishments were omitted from the release. Data for these establishments are included in the broader total.

Year	County	State of Kansas	Non Metro Kansas	County Rank	Per 1000 or \$ Per Capita
2000	8	6,564	2,591	86	1.9
2001	8	6,636	2,590	84	1.9
2002	12	7,052	2,777	74	2.9
2003	13	7,129	2,792	68	3.1
2004	14	7,239	2,813	66	3.3
2005	14	7,412	2,855	66	3.3
2006	12	7,477	2,860	71	2.9
2007	12	7,661	2,864	71	2.9
2008	12	7,651	2,810	71	2.9
2009	11	7,696	2,787	72	2.6
2010	9	7,751	2,830	80	2.1
2011	8	7,804	2,817	85	1.9
2012	7	7,973	2,793	95	1.7
2013	6	7,877	2,729	99	1.5
2014	6	7,809	2,686	95	1.5
2015	5	8,103	2,692	99	1.2
2016	5	8,315	2,678	100	1.2
2017	5	8,136	2,646	97	1.2
2018	6	8,126	2,632	92	1.5
2019	7	8,184	2,587	86	1.8
2020	6	8,290	2,571	92	1.6

County: county value. Kansas: state value. County Rank: highest county value ranked #1. (\$000): thousands of dollars. Nonmetro Kansas: Kansas total less Metropolitan Areas as defined by the Office of Management and Budget (OMB; released 3/6/2020). Per 1000: For nonmoney amounts, Per 1000=(county value / county population for the same year as the data) x 1000. \$ Per capita=(county value / county population for the same year as the data). Value= . indicates missing or suppressed data or value not calculated.

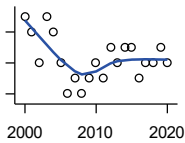
Business



ESTABLISHMENTS: ARTS, ENTERTAINMENT, AND RECREATION

U.S. Census Bureau, County Business Patterns. Beginning with the 2017 data, any tabulation with fewer than 3 establishments were omitted from the release. Data for these establishments are included in the broader total.

Year	County	State of Kansas	Non Metro Kansas	County Rank	Per 1000 or \$ Per Capita
2000	3	981	419	69	0.7
2001	3	1,009	433	71	0.7
2002	3	1,054	441	70	0.7
2003	3	1,045	443	70	0.7
2004	4	1,082	445	57	0.9
2005	4	1,109	446	61	0.9
2006	4	1,080	445	58	1.0
2007	5	1,092	444	49	1.2
2008	5	1,062	423	47	1.2
2009	5	1,063	421	44	1.2
2010	4	1,018	406	55	0.9
2011	4	997	387	49	0.9
2012	5	1,000	388	44	1.2
2013	5	1,009	377	42	1.2
2014	5	1,030	365	44	1.2
2015	5	1,031	357	42	1.2
2016	4	1,060	366	47	1.0
2017	4	1,096	.	49	1.0
2018	4	1,088	.	47	1.0
2019	4	1,087	.	48	1.0
2020	4	1,064	.	48	1.1



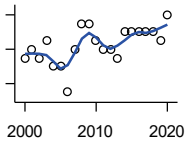
ESTABLISHMENTS: ACCOMMODATION AND FOOD SERVICES

U.S. Census Bureau, County Business Patterns. Beginning with the 2017 data, any tabulation with fewer than 3 establishments were omitted from the release. Data for these establishments are included in the broader total.

Year	County	State of Kansas	Non Metro Kansas	County Rank	Per 1000 or \$ Per Capita
2000	10	5,536	2,213	80	2.3
2001	9	5,551	2,173	86	2.1
2002	7	5,610	2,174	95	1.7
2003	10	5,635	2,188	79	2.4
2004	9	5,681	2,160	83	2.1
2005	7	5,776	2,170	92	1.6
2006	5	5,745	2,132	98	1.2
2007	6	5,877	2,095	95	1.4
2008	5	5,843	2,052	100	1.2
2009	6	5,794	2,029	90	1.4
2010	7	5,898	2,046	85	1.6
2011	6	5,958	2,067	91	1.4
2012	8	5,951	2,046	80	1.9
2013	7	6,061	2,070	88	1.7
2014	8	5,985	2,024	78	2.0
2015	8	6,034	2,063	81	2.0
2016	6	6,126	2,094	95	1.5
2017	7	6,250	2,123	88	1.7
2018	7	6,256	2,128	87	1.8
2019	8	6,231	2,131	81	2.0
2020	7	6,206	2,131	86	1.9

County: county value. Kansas: state value. County Rank: highest county value ranked #1. (\$000): thousands of dollars. Nonmetro Kansas: Kansas total less Metropolitan Areas as defined by the Office of Management and Budget (OMB; released 3/6/2020). Per 1000: For nonmoney amounts, Per 1000=(county value / county population for the same year as the data) x 1000. \$ Per capita=(county value / county population for the same year as the data). Value= . indicates missing or suppressed data or value not calculated.

Business



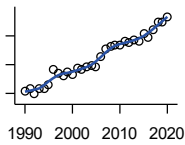
ESTABLISHMENTS: OTHER SERVICES

U.S. Census Bureau, County Business Patterns. Beginning with the 2017 data, any tabulation with fewer than 3 establishments were omitted from the release. Data for these establishments are included in the broader total.

Year	County	State of Kansas	Non Metro Kansas	County Rank	Per 1000 or \$ Per Capita
2000	15	8,423	3,636	87	3.5
2001	16	8,310	3,614	84	3.8
2002	15	8,552	3,658	89	3.6
2003	17	8,411	3,605	82	4.0
2004	14	8,343	3,597	88	3.3
2005	14	8,321	3,571	89	3.3
2006	11	8,225	3,490	95	2.6
2007	16	8,355	3,534	86	3.8
2008	19	8,104	3,406	76	4.6
2009	19	8,040	3,405	74	4.5
2010	17	7,998	3,379	81	4.0
2011	16	7,883	3,294	83	3.8
2012	16	7,913	3,303	81	3.8
2013	15	7,947	3,290	85	3.6
2014	18	7,943	3,285	76	4.4
2015	18	7,869	3,255	75	4.4
2016	18	7,839	3,204	78	4.5
2017	18	7,873	3,189	80	4.5
2018	18	7,853	3,176	80	4.5
2019	17	7,834	3,138	83	4.3
2020	20	7,787	3,073	69	5.3

County: county value. Kansas: state value. County Rank: highest county value ranked #1. (\$000): thousands of dollars. Nonmetro Kansas: Kansas total less Metropolitan Areas as defined by the Office of Management and Budget (OMB; released 3/6/2020). Per 1000: For nonmoney amounts, Per 1000=(county value / county population for the same year as the data) x 1000. \$ Per capita=(county value / county population for the same year as the data). Value= . indicates missing or suppressed data or value not calculated.

Business



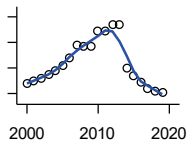
**TOTAL ANNUAL PAYROLL (\$000)
COUNTY BUSINESS PATTERNS**

U.S. Census Bureau, County Business Patterns. Beginning with the 2017 data, any tabulation with fewer than 3 establishments were omitted from the release. Data for these establishments are included in the broader total.

Year	County	State of Kansas	Non Metro Kansas	County Rank	Per 1000 or \$ Per Capita
1990	10,866	17,487,316	4,442,429	75	2,796.2
1991	11,885	18,162,326	4,612,616	76	3,022.6
1992	9,717	19,244,346	4,882,060	82	2,447.6
1993	11,518	20,087,190	5,182,780	81	2,870.9
1994	11,705	21,201,652	5,541,423	81	2,891.6
1995	13,202	22,825,920	5,875,310	80	3,258.9
1996	18,199	24,613,884	6,198,398	71	4,475.9
1997	17,096	26,787,098	6,599,061	74	4,082.1
1998	15,919	28,747,576	6,871,794	79	3,831.3
1999	17,442	30,600,434	7,121,961	74	4,097.3
2000	16,423	31,990,762	7,520,424	80	3,813.1
2001	18,990	33,303,992	7,598,165	75	4,472.4
2002	18,486	33,152,962	7,572,002	75	4,407.7
2003	19,317	34,040,944	7,726,561	75	4,584.0
2004	19,510	35,725,812	8,303,779	75	4,603.6
2005	19,332	36,646,064	8,586,986	78	4,548.7
2006	22,708	39,251,388	9,178,947	73	5,429.9
2007	25,533	42,022,753	.	71	6,102.5
2008	26,226	43,984,689	.	72	6,315.0
2009	27,015	42,146,866	.	70	6,450.6
2010	26,731	42,686,303	10,294,015	74	6,280.8
2011	28,300	43,733,944	.	71	6,682.4
2012	27,532	45,608,072	11,222,183	75	6,531.9
2013	28,465	47,715,601	11,446,751	75	6,898.9
2014	28,350	49,712,832	11,957,931	76	6,912.9
2015	30,768	51,259,676	11,975,718	77	7,524.6
2016	29,517	51,016,318	12,148,646	76	7,331.6
2017	32,272	52,754,605	12,448,592	73	8,029.9
2018	34,733	55,087,460	12,810,270	71	8,705.0
2019	34,893	57,272,387	13,123,288	71	8,793.6
2020	36,508	58,374,388	14,007,955	69	9,658.2

County: county value. Kansas: state value. County Rank: highest county value ranked #1. (\$000): thousands of dollars. Nonmetro Kansas: Kansas total less Metropolitan Areas as defined by the Office of Management and Budget (OMB; released 3/6/2020). Per 1000: For nonmoney amounts, Per 1000=(county value / county population for the same year as the data) x 1000. \$ Per capita=(county value / county population for the same year as the data). Value= . indicates missing or suppressed data or value not calculated.

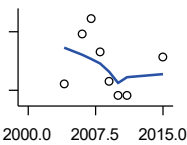
Business



**TOTAL ANNUAL PAYROLL(\$000):
FORESTRY, FISHING, HUNTING, AND
AG SUPPORT**

U.S. Census Bureau, County Business Patterns. Beginning with the 2017 data, any tabulation with fewer than 3 establishments were omitted from the release. Data for these establishments are included in the broader total.

Year	County	State of Kansas	Non Metro Kansas	County Rank	Per 1000 or \$ Per Capita
2000	208	13,551	.	.	48.3
2001	247	.	.	.	58.2
2002	299	16,528	.	.	71.3
2003	359	17,247	.	.	85.2
2004	442	17,552	.	.	104.3
2005	542	16,298	.	.	127.5
2006	691	17,908	.	.	165.2
2007	959	22,199	.	.	229.2
2008	928	21,359	.	.	223.5
2009	926	22,466	.	.	221.1
2010	1,218	22,753	.	.	286.2
2011	1,221	23,320	.	.	288.3
2012	1,339	27,492	.	.	317.7
2013	1,351	30,360	.	.	327.4
2014	501	34,862	.	.	122.2
2015	358	35,980	.	.	87.6
2016	232	31,488	.	.	57.6
2017	91	34,117	.	.	22.6
2018	43	37,960	.	.	10.8
2019	30	39,558	.	.	7.6



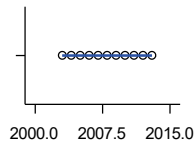
**TOTAL ANNUAL PAYROLL(\$000):
MINING**

U.S. Census Bureau, County Business Patterns. Beginning with the 2017 data, any tabulation with fewer than 3 establishments were omitted from the release. Data for these establishments are included in the broader total.

Year	County	State of Kansas	Non Metro Kansas	County Rank	Per 1000 or \$ Per Capita
2000	.	240,079	.	.	.
2001	.	273,838	.	.	.
2002	.	262,277	.	.	.
2003	.	290,652	.	.	.
2004	2,166	326,997	.	.	511.1
2005	.	381,069	.	.	.
2006	3,433	482,102	.	.	820.9
2007	3,839	551,751	.	.	917.5
2008	2,973	620,446	.	.	715.9
2009	2,219	465,070	.	.	529.8
2010	1,856	485,841	.	.	436.1
2011	1,857	541,536	.	.	438.5
2012	.	600,402	.	.	.
2013	.	599,788	.	.	.
2014	.	678,673	.	.	.
2015	2,840	552,658	.	.	694.5

County: county value. Kansas: state value. County Rank: highest county value ranked #1. (\$000): thousands of dollars. Nonmetro Kansas: Kansas total less Metropolitan Areas as defined by the Office of Management and Budget (OMB; released 3/6/2020). Per 1000: For nonmoney amounts, Per 1000=(county value / county population for the same year as the data) x 1000. \$ Per capita=(county value / county population for the same year as the data). Value= . indicates missing or suppressed data or value not calculated.

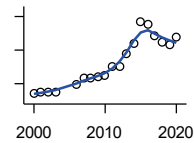
Business



**TOTAL ANNUAL PAYROLL(\$000):
UTILITIES**

U.S. Census Bureau, County Business Patterns. Beginning with the 2017 data, any tabulation with fewer than 3 establishments were omitted from the release. Data for these establishments are included in the broader total.

Year	County	State of Kansas	Non Metro Kansas	County Rank	Per 1000 or \$ Per Capita
2000	.	410,313	.	.	.
2001	.	452,057	.	.	.
2002	.	377,559	.	.	.
2003	0	378,157	.	.	0.0
2004	0	377,809	.	.	0.0
2005	0	429,864	.	.	0.0
2006	0	443,999	.	.	0.0
2007	0	480,068	.	.	0.0
2008	0	541,066	.	.	0.0
2009	0	563,373	.	.	0.0
2010	0	512,628	.	.	0.0
2011	0	653,229	.	.	0.0
2012	0	625,451	.	.	0.0
2013	0	625,347	.	.	0.0
2014	.	610,960	.	.	.
2015	.	668,559	.	.	.



**TOTAL ANNUAL PAYROLL(\$000):
CONSTRUCTION**

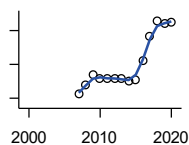
U.S. Census Bureau, County Business Patterns. Beginning with the 2017 data, any tabulation with fewer than 3 establishments were omitted from the release. Data for these establishments are included in the broader total.

Year	County	State of Kansas	Non Metro Kansas	County Rank	Per 1000 or \$ Per Capita
2000	419	2,256,057	.	.	97.3
2001	499	2,320,652	.	.	117.5
2002	516	2,302,229	.	.	123.0
2003	479	2,282,021	.	.	113.7
2004	.	2,302,854	.	.	.
2005	.	2,465,977	.	.	.
2006	934	2,700,351	.	.	223.3
2007	1,330	2,772,168	.	.	317.9
2008	1,344	2,950,073	.	.	323.6
2009	1,377	2,709,864	.	.	328.8
2010	1,522	2,553,555	.	.	357.6
2011	2,006	2,550,355	.	.	473.7
2012	2,026	2,733,284	.	.	480.7
2013	2,819	2,866,801	.	.	683.2
2014	3,387	3,135,814	.	.	825.9
2015	4,719	3,270,952	.	.	1,154.1
2016	4,519	3,328,610	.	.	1,122.5
2017	3,859	3,568,505	.	.	960.2
2018	3,482	3,806,196	.	.	872.7
2019	3,336	3,879,912	.	.	840.7
2020	3,760	3,983,029	.	.	994.7

County: county value. Kansas: state value. County Rank: highest county value ranked #1. (\$000): thousands of dollars. Nonmetro Kansas: Kansas total less Metropolitan Areas as defined by the Office of Management and Budget (OMB; released 3/6/2020). Per 1000: For nonmoney amounts, Per 1000=(county value / county population for the same year as the data) x 1000. \$ Per capita=(county value / county population for the same year as the data). Value= . indicates missing or suppressed data or value not calculated.

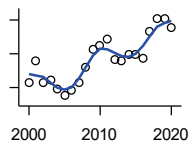
Business

**TOTAL ANNUAL PAYROLL(\$000):
MANUFACTURING**



U.S. Census Bureau, County Business Patterns. Beginning with the 2017 data, any tabulation with fewer than 3 establishments were omitted from the release. Data for these establishments are included in the broader total.

Year	County	State of Kansas	Non Metro Kansas	County Rank	Per 1000 or \$ Per Capita
2000	.	7,015,414	.	.	.
2001	.	7,301,706	.	.	.
2002	.	6,802,605	.	.	.
2003	.	6,691,611	.	.	.
2004	.	6,985,656	.	.	.
2005	.	7,221,614	.	.	.
2006	.	7,621,873	.	.	.
2007	1,269	7,873,359	.	.	303.3
2008	1,774	8,441,541	.	.	427.2
2009	2,398	7,477,838	.	.	572.6
2010	2,170	7,556,955	.	.	509.9
2011	2,169	7,747,934	.	.	512.2
2012	2,190	7,704,851	.	.	519.6
2013	2,135	8,365,542	.	.	517.5
2014	2,016	8,787,306	.	.	491.6
2015	2,095	9,052,105	.	.	512.4
2016	3,188	8,868,744	.	.	791.9
2017	4,652	9,075,793	.	.	1,157.5
2018	5,575	9,481,652	.	.	1,397.2
2019	5,414	10,171,575	.	.	1,364.4
2020	5,492	9,744,825	.	.	1,452.9



**TOTAL ANNUAL PAYROLL(\$000):
WHOLESALE TRADE**

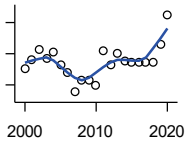
U.S. Census Bureau, County Business Patterns. Beginning with the 2017 data, any tabulation with fewer than 3 establishments were omitted from the release. Data for these establishments are included in the broader total.

Year	County	State of Kansas	Non Metro Kansas	County Rank	Per 1000 or \$ Per Capita
2000	4,300	2,332,755	.	.	998.4
2001	5,568	2,283,169	.	.	1,311.4
2002	4,320	2,107,653	.	.	1,030.0
2003	4,448	2,622,701	.	.	1,055.5
2004	3,924	2,663,196	.	.	925.9
2005	3,505	2,345,990	.	.	824.7
2006	3,871	2,592,211	.	.	925.6
2007	4,268	2,682,542	.	.	1,020.1
2008	5,202	3,078,655	.	.	1,252.6
2009	6,231	2,940,949	.	.	1,487.8
2010	6,470	3,097,628	.	.	1,520.2
2011	6,885	3,305,811	.	.	1,625.7
2012	5,637	3,339,997	.	.	1,337.4
2013	5,601	3,460,512	.	.	1,357.5
2014	5,943	3,712,075	.	.	1,449.2
2015	5,983	3,760,189	.	.	1,463.2
2016	5,747	3,738,207	.	.	1,427.5
2017	7,315	3,822,730	.	.	1,820.1
2018	8,089	3,814,353	.	.	2,027.3
2019	8,073	4,025,802	.	.	2,034.5
2020	7,586	4,224,666	.	.	2,006.9

County: county value. Kansas: state value. County Rank: highest county value ranked #1. (\$000): thousands of dollars. Nonmetro Kansas: Kansas total less Metropolitan Areas as defined by the Office of Management and Budget (OMB; released 3/6/2020). Per 1000: For nonmoney amounts, Per 1000=(county value / county population for the same year as the data) x 1000. \$ Per capita=(county value / county population for the same year as the data). Value= . indicates missing or suppressed data or value not calculated.

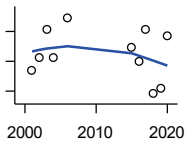
Business

**TOTAL ANNUAL PAYROLL(\$000):
RETAIL TRADE**



U.S. Census Bureau, County Business Patterns. Beginning with the 2017 data, any tabulation with fewer than 3 establishments were omitted from the release. Data for these establishments are included in the broader total.

Year	County	State of Kansas	Non Metro Kansas	County Rank	Per 1000 or \$ Per Capita
2000	1,007	2,747,001	.	.	233.8
2001	1,121	2,813,226	.	.	264.0
2002	1,255	2,854,231	.	.	299.2
2003	1,142	2,773,674	.	.	271.0
2004	1,216	2,847,826	.	.	286.9
2005	1,065	2,952,196	.	.	250.6
2006	962	3,126,495	.	.	230.0
2007	706	3,201,169	.	.	168.7
2008	867	3,261,054	.	.	208.8
2009	862	3,232,246	.	.	205.8
2010	790	3,321,838	.	.	185.6
2011	1,238	3,384,607	.	.	292.3
2012	1,052	3,409,755	.	.	249.6
2013	1,212	3,483,752	.	.	293.7
2014	1,107	3,617,933	.	.	269.9
2015	1,094	3,712,165	.	.	267.5
2016	1,090	3,826,889	.	.	270.7
2017	1,096	3,797,849	.	.	272.7
2018	1,095	3,818,988	.	.	274.4
2019	1,315	3,908,994	.	.	331.4
2020	1,699	3,984,443	.	.	449.5



**TOTAL ANNUAL PAYROLL(\$000):
TRANSPORTATION &
WAREHOUSING**

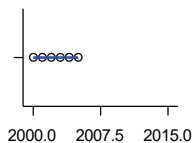
U.S. Census Bureau, County Business Patterns. Beginning with the 2017 data, any tabulation with fewer than 3 establishments were omitted from the release. Data for these establishments are included in the broader total.

Year	County	State of Kansas	Non Metro Kansas	County Rank	Per 1000 or \$ Per Capita
2000	.	1,044,835	.	.	.
2001	1,670	1,089,405	.	.	393.3
2002	1,850	1,094,636	.	.	441.1
2003	2,234	1,316,655	.	.	530.1
2004	1,849	1,439,800	.	.	436.3
2005	.	1,393,651	.	.	.
2006	2,390	1,528,551	.	.	571.5
2007	.	1,788,267	.	.	.
2008	.	1,722,697	.	.	.
2009	.	1,618,598	.	.	.
2010	.	1,735,761	.	.	.
2011	.	1,739,165	.	.	.
2012	.	1,984,976	.	.	.
2013	.	2,006,261	.	.	.
2014	.	2,097,377	.	.	.
2015	1,984	2,190,072	.	.	485.2
2016	1,805	2,202,859	.	.	448.3
2017	2,220	2,546,061	.	.	552.4
2018	1,363	2,663,188	.	.	341.6
2019	1,444	2,879,406	.	.	363.9
2020	2,137	2,962,461	.	.	565.3

County: county value. Kansas: state value. County Rank: highest county value ranked #1. (\$000): thousands of dollars. Nonmetro Kansas: Kansas total less Metropolitan Areas as defined by the Office of Management and Budget (OMB; released 3/6/2020). Per 1000: For nonmoney amounts, Per 1000=(county value / county population for the same year as the data) x 1000. \$ Per capita=(county value / county population for the same year as the data). Value= . indicates missing or suppressed data or value not calculated.

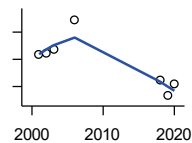
Business

**TOTAL ANNUAL PAYROLL(\$000):
INFORMATION**



U.S. Census Bureau, County Business Patterns. Beginning with the 2017 data, any tabulation with fewer than 3 establishments were omitted from the release. Data for these establishments are included in the broader total.

Year	County	State of Kansas	Non Metro Kansas	County Rank	Per 1000 or \$ Per Capita
2000	0	1,923,381	.	.	0.0
2001	0	2,218,610	.	.	0.0
2002	0	2,298,108	.	.	0.0
2003	0	2,378,673	.	.	0.0
2004	0	2,392,990	.	.	0.0
2005	0	2,395,081	.	.	0.0
2006	.	2,586,483	.	.	.
2007	.	2,594,138	.	.	.
2008	.	3,043,244	.	.	.
2009	.	3,045,570	.	.	.
2010	.	2,481,580	.	.	.
2011	.	2,513,805	.	.	.
2012	.	2,535,555	.	.	.
2013	.	2,805,017	.	.	.
2014	.	2,393,609	.	.	.
2015	.	2,406,323	.	.	.



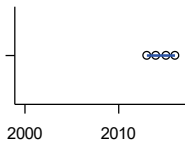
**TOTAL ANNUAL PAYROLL(\$000):
FINANCE & INSURANCE**

U.S. Census Bureau, County Business Patterns. Beginning with the 2017 data, any tabulation with fewer than 3 establishments were omitted from the release. Data for these establishments are included in the broader total.

Year	County	State of Kansas	Non Metro Kansas	County Rank	Per 1000 or \$ Per Capita
2000	.	2,083,565	.	.	.
2001	2,232	2,129,587	.	.	525.7
2002	2,241	2,414,120	.	.	534.3
2003	2,269	2,608,579	.	.	538.4
2004	.	2,676,910	.	.	.
2005	.	2,786,136	.	.	.
2006	2,494	2,928,931	.	.	596.4
2007	.	3,096,017	.	.	.
2008	.	3,322,977	.	.	.
2009	.	3,206,839	.	.	.
2010	.	3,211,300	.	.	.
2011	.	3,404,633	.	.	.
2012	.	3,611,165	.	.	.
2013	.	3,896,051	.	.	.
2014	.	4,044,315	.	.	.
2015	.	4,113,060	.	.	.
2018	2,046	4,682,552	.	.	512.8
2019	1,931	4,814,201	.	.	486.6
2020	2,023	5,288,529	.	.	535.2

County: county value. Kansas: state value. County Rank: highest county value ranked #1. (\$000): thousands of dollars. Nonmetro Kansas: Kansas total less Metropolitan Areas as defined by the Office of Management and Budget (OMB; released 3/6/2020). Per 1000: For nonmoney amounts, Per 1000=(county value / county population for the same year as the data) x 1000. \$ Per capita=(county value / county population for the same year as the data). Value= . indicates missing or suppressed data or value not calculated.

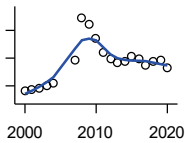
Business



**TOTAL ANNUAL PAYROLL(\$000):
REAL ESTATE, RENTAL, AND
LEASING**

U.S. Census Bureau, County Business Patterns. Beginning with the 2017 data, any tabulation with fewer than 3 establishments were omitted from the release. Data for these establishments are included in the broader total.

Year	County	State of Kansas	Non Metro Kansas	County Rank	Per 1000 or \$ Per Capita
2000	.	360,637	.	.	.
2001	.	397,371	.	.	.
2002	.	403,695	.	.	.
2003	.	437,786	.	.	.
2004	.	430,719	.	.	.
2005	.	465,149	.	.	.
2006	.	478,811	.	.	.
2007	.	452,969	.	.	.
2008	.	484,149	.	.	.
2009	.	450,884	.	.	.
2010	.	487,255	.	.	.
2011	.	535,120	.	.	.
2012	.	531,039	.	.	.
2013	0	538,796	.	.	0.0
2014	0	542,307	.	.	0.0
2015	0	595,030	.	.	0.0
2016	0	607,668	.	.	0.0



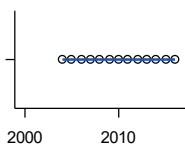
**TOTAL ANNUAL PAYROLL(\$000):
PROFESSIONAL, SCIENTIFIC, AND
TECHNICAL SERVICES**

U.S. Census Bureau, County Business Patterns. Beginning with the 2017 data, any tabulation with fewer than 3 establishments were omitted from the release. Data for these establishments are included in the broader total.

Year	County	State of Kansas	Non Metro Kansas	County Rank	Per 1000 or \$ Per Capita
2000	413	2,057,313	.	.	95.9
2001	428	2,152,937	.	.	100.8
2002	459	2,150,085	.	.	109.4
2003	495	2,052,712	.	.	117.5
2004	544	2,531,457	.	.	128.4
2005	.	2,418,500	.	.	.
2006	.	2,655,690	.	.	.
2007	975	2,901,544	.	.	233.0
2008	1,725	2,903,802	.	.	415.4
2009	1,610	3,071,611	.	.	384.4
2010	1,347	3,037,182	.	.	316.5
2011	1,108	3,132,082	.	.	261.6
2012	981	3,455,548	.	.	232.7
2013	918	3,777,729	.	.	222.5
2014	934	3,981,580	.	.	227.7
2015	1,023	4,039,074	.	.	250.2
2016	990	4,125,507	.	.	245.9
2017	871	4,158,858	.	.	216.7
2018	932	4,314,317	.	.	233.6
2019	974	4,646,644	.	.	245.5
2020	814	4,927,611	.	.	215.3

County: county value. Kansas: state value. County Rank: highest county value ranked #1. (\$000): thousands of dollars. Nonmetro Kansas: Kansas total less Metropolitan Areas as defined by the Office of Management and Budget (OMB; released 3/6/2020). Per 1000: For nonmoney amounts, Per 1000=(county value / county population for the same year as the data) x 1000. \$ Per capita=(county value / county population for the same year as the data). Value= . indicates missing or suppressed data or value not calculated.

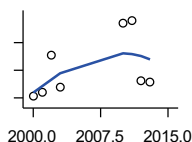
Business



**TOTAL ANNUAL PAYROLL(\$000):
MANAGEMENT OF COMPANIES AND
ENTERPRISES**

U.S. Census Bureau, County Business Patterns. Beginning with the 2017 data, any tabulation with fewer than 3 establishments were omitted from the release. Data for these establishments are included in the broader total.

Year	County	State of Kansas	Non Metro Kansas	County Rank	Per 1000 or \$ Per Capita
2000	.	1,362,735	.	.	.
2001	.	1,279,253	.	.	.
2002	.	1,311,368	.	.	.
2003	.	1,352,119	.	.	.
2004	0	1,378,891	.	.	0.0
2005	0	1,510,876	.	.	0.0
2006	0	1,626,320	.	.	0.0
2007	0	2,233,654	.	.	0.0
2008	0	1,848,656	.	.	0.0
2009	0	1,601,158	.	.	0.0
2010	0	2,003,048	.	.	0.0
2011	0	1,677,619	.	.	0.0
2012	0	1,834,430	.	.	0.0
2013	0	1,938,100	.	.	0.0
2014	0	2,117,232	.	.	0.0
2015	0	2,451,126	.	.	0.0
2016	0	2,167,620	.	.	0.0



**TOTAL ANNUAL PAYROLL(\$000):
ADMIN, SUPPORT, WASTE MGMT.,
AND REMEDIATION**

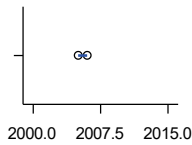
U.S. Census Bureau, County Business Patterns. Beginning with the 2017 data, any tabulation with fewer than 3 establishments were omitted from the release. Data for these establishments are included in the broader total.

Year	County	State of Kansas	Non Metro Kansas	County Rank	Per 1000 or \$ Per Capita
2000	22	1,388,712	.	.	5.1
2001	28	1,416,480	.	.	6.6
2002	81	1,378,905	.	.	19.3
2003	35	1,387,061	.	.	8.3
2004	.	1,544,442	.	.	.
2005	.	1,694,687	.	.	.
2006	.	1,800,846	.	.	.
2007	.	1,978,025	.	.	.
2008	.	2,096,864	.	.	.
2009	.	1,832,540	.	.	.
2010	128	2,117,325	.	.	30.1
2011	132	2,114,970	.	.	31.2
2012	44	2,230,250	.	.	10.4
2013	43	2,214,320	.	.	10.4
2014	.	2,444,170	.	.	.
2015	.	2,577,592	.	.	.

County: county value. Kansas: state value. County Rank: highest county value ranked #1. (\$000): thousands of dollars. Nonmetro Kansas: Kansas total less Metropolitan Areas as defined by the Office of Management and Budget (OMB; released 3/6/2020). Per 1000: For nonmoney amounts, Per 1000=(county value / county population for the same year as the data) x 1000. \$ Per capita=(county value / county population for the same year as the data). Value= . indicates missing or suppressed data or value not calculated.

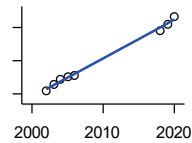
Business

**TOTAL ANNUAL PAYROLL(\$000):
EDUCATIONAL SERVICES**



U.S. Census Bureau, County Business Patterns. Beginning with the 2017 data, any tabulation with fewer than 3 establishments were omitted from the release. Data for these establishments are included in the broader total.

Year	County	State of Kansas	Non Metro Kansas	County Rank	Per 1000 or \$ Per Capita
2000	.	299,843	.	.	.
2001	.	320,606	.	.	.
2002	.	353,531	.	.	.
2003	.	350,814	.	.	.
2004	.	361,644	.	.	.
2005	0	375,781	.	.	0.0
2006	0	400,565	.	.	0.0
2007	.	414,233	.	.	.
2008	.	463,210	.	.	.
2009	.	468,856	.	.	.
2010	.	487,670	.	.	.
2011	.	504,964	.	.	.
2012	.	508,448	.	.	.
2013	.	553,995	.	.	.
2014	.	612,073	.	.	.
2015	.	579,794	.	.	.



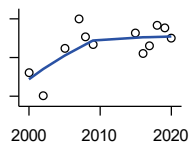
**TOTAL ANNUAL PAYROLL(\$000):
HEALTH CARE AND SOCIAL ASSISTANCE**

U.S. Census Bureau, County Business Patterns. Beginning with the 2017 data, any tabulation with fewer than 3 establishments were omitted from the release. Data for these establishments are included in the broader total.

Year	County	State of Kansas	Non Metro Kansas	County Rank	Per 1000 or \$ Per Capita
2000	.	4,120,595	.	.	.
2001	.	4,445,027	.	.	.
2002	3,170	4,705,220	.	.	755.8
2003	3,565	4,939,323	.	.	846.0
2004	3,841	5,232,394	.	.	906.3
2005	4,045	5,487,089	.	.	951.8
2006	4,128	5,814,218	.	.	987.1
2007	.	6,186,471	.	.	.
2008	.	6,490,627	.	.	.
2009	.	6,749,962	.	.	.
2010	.	6,871,727	.	.	.
2011	.	7,129,655	.	.	.
2012	.	7,614,853	.	.	.
2013	.	7,541,515	.	.	.
2014	.	7,733,621	.	.	.
2015	.	7,969,650	.	.	.
2018	6,844	8,637,619	.	.	1,715.3
2019	7,186	8,854,414	.	.	1,811.0
2020	7,662	9,309,269	.	.	2,027.0

County: county value. Kansas: state value. County Rank: highest county value ranked #1. (\$000): thousands of dollars. Nonmetro Kansas: Kansas total less Metropolitan Areas as defined by the Office of Management and Budget (OMB; released 3/6/2020). Per 1000: For nonmoney amounts, Per 1000=(county value / county population for the same year as the data) x 1000. \$ Per capita=(county value / county population for the same year as the data). Value= . indicates missing or suppressed data or value not calculated.

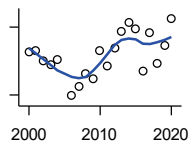
Business



**TOTAL ANNUAL PAYROLL(\$000):
ARTS, ENTERTAINMENT, AND
RECREATION**

U.S. Census Bureau, County Business Patterns. Beginning with the 2017 data, any tabulation with fewer than 3 establishments were omitted from the release. Data for these establishments are included in the broader total.

Year	County	State of Kansas	Non Metro Kansas	County Rank	Per 1000 or \$ Per Capita
2000	124	195,784	.	.	28.8
2001	.	203,511	.	.	.
2002	100	206,204	.	.	23.8
2003	.	185,049	.	.	.
2004	.	190,742	.	.	.
2005	149	196,594	.	.	35.1
2006	.	201,049	.	.	.
2007	180	220,435	.	.	43.0
2008	161	236,986	.	.	38.8
2009	154	237,116	.	.	36.8
2010	.	233,285	.	.	.
2011	.	234,351	.	.	.
2012	.	254,169	.	.	.
2013	.	278,474	.	.	.
2014	.	289,103	.	.	.
2015	165	300,253	.	.	40.4
2016	144	312,902	.	.	35.8
2017	152	323,153	.	.	37.8
2018	173	325,454	.	.	43.4
2019	170	335,362	.	.	42.8
2020	160	298,119	.	.	42.3



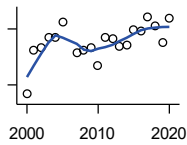
**TOTAL ANNUAL PAYROLL(\$000):
ACCOMMODATION AND FOOD
SERVICES**

U.S. Census Bureau, County Business Patterns. Beginning with the 2017 data, any tabulation with fewer than 3 establishments were omitted from the release. Data for these establishments are included in the broader total.

Year	County	State of Kansas	Non Metro Kansas	County Rank	Per 1000 or \$ Per Capita
2000	295	926,831	.	.	68.5
2001	299	960,196	.	.	70.4
2002	275	930,510	.	.	65.6
2003	266	992,313	.	.	63.1
2004	277	1,046,901	.	.	65.4
2005	.	1,101,854	.	.	.
2006	198	1,185,280	.	.	47.3
2007	219	1,431,100	.	.	52.3
2008	247	1,271,594	.	.	59.5
2009	235	1,283,065	.	.	56.1
2010	299	1,296,556	.	.	70.3
2011	265	1,364,281	.	.	62.6
2012	304	1,388,337	.	.	72.1
2013	341	1,476,335	.	.	82.6
2014	361	1,572,021	.	.	88.0
2015	345	1,640,144	.	.	84.4
2016	253	1,709,193	.	.	62.8
2017	338	1,824,791	.	.	84.1
2018	269	1,880,364	.	.	67.4
2019	308	1,958,603	.	.	77.6
2020	369	1,745,238	.	.	97.6

County: county value. Kansas: state value. County Rank: highest county value ranked #1. (\$000): thousands of dollars. Nonmetro Kansas: Kansas total less Metropolitan Areas as defined by the Office of Management and Budget (OMB; released 3/6/2020). Per 1000: For nonmoney amounts, Per 1000=(county value / county population for the same year as the data) x 1000. \$ Per capita=(county value / county population for the same year as the data). Value= . indicates missing or suppressed data or value not calculated.

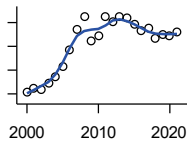
Business



**TOTAL ANNUAL PAYROLL(\$000):
OTHER SERVICES**

U.S. Census Bureau, County Business Patterns. Beginning with the 2017 data, any tabulation with fewer than 3 establishments were omitted from the release. Data for these establishments are included in the broader total.

Year	County	State of Kansas	Non Metro Kansas	County Rank	Per 1000 or \$ Per Capita
2000	500	965,540	.	.	116.1
2001	970	996,716	.	.	228.5
2002	1,001	1,007,464	.	.	238.7
2003	1,113	979,466	.	.	264.1
2004	1,114	970,383	.	.	262.9
2005	1,275	1,005,537	.	.	300.0
2006	.	1,055,932	.	.	.
2007	945	1,141,551	.	.	225.9
2008	972	1,184,016	.	.	234.0
2009	1,002	1,167,154	.	.	239.3
2010	808	1,170,201	.	.	189.8
2011	1,106	1,173,775	.	.	261.2
2012	1,092	1,217,210	.	.	259.1
2013	1,019	1,254,933	.	.	247.0
2014	1,026	1,305,563	.	.	250.2
2015	1,185	1,341,075	.	.	289.8
2016	1,182	1,351,375	.	.	293.6
2017	1,330	1,344,179	.	.	330.9
2018	1,238	1,382,801	.	.	310.3
2019	1,049	1,427,711	.	.	264.4
2020	1,310	1,420,859	.	.	346.6



**NOMINAL TAXABLE RETAIL SALES
(million\$)**

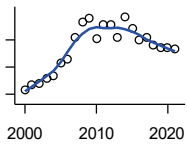
Kansas Department of Revenue

Year	County	State of Kansas	Non Metro Kansas	County Rank	Per 1000 or \$ Per Capita
2000	20.6	30,119.0	8,831.7	82	4.8
2001	22.4	30,202.2	8,700.3	77	5.3
2002	21.6	29,380.8	8,241.5	76	5.2
2003	24.7	30,694.0	8,710.6	74	5.9
2004	27.1	31,922.6	9,062.5	74	6.4
2005	31.7	32,924.2	9,386.6	70	7.5
2006	38.7	34,937.6	10,042.1	67	9.3
2007	47.3	36,180.1	10,553.2	64	11.3
2008	52.5	37,559.5	11,126.9	62	12.7
2009	42.5	35,211.8	10,351.5	67	10.2
2010	44.4	35,655.7	10,606.1	67	10.4
2011	52.3	37,257.0	11,153.5	65	12.3
2012	50.2	38,988.8	11,749.1	66	11.9
2013	52.4	40,009.0	11,993.8	67	12.7
2014	51.8	41,299.0	12,365.4	67	12.6
2015	49.1	41,635.8	11,747.6	66	12.0
2016	46.3	42,040.2	11,523.5	67	11.5
2017	47.9	41,940.1	11,449.9	65	11.9
2018	43.3	42,732.3	11,643.9	70	10.9
2019	45.0	43,732.5	12,062.7	70	11.3
2020	44.6	43,689.9	12,331.7	72	11.8
2021	46.0	48,532.8	13,413.0	71	12.5

County: county value. Kansas: state value. County Rank: highest county value ranked #1. (\$000): thousands of dollars. Nonmetro Kansas: Kansas total less Metropolitan Areas as defined by the Office of Management and Budget (OMB; released 3/6/2020). Per 1000: For nonmoney amounts, Per 1000=(county value / county population for the same year as the data) x 1000. \$ Per capita=(county value / county population for the same year as the data). Value= . indicates missing or suppressed data or value not calculated.

Business

RETAIL PULL FACTOR



Kansas Direct Program, Kansas State University Cooperative Extension Service (1980-1999); Kansas Department of Revenue (2000-)

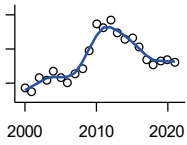
Year	County	State of Kansas	Non Metro Kansas	County Rank	Per 1000 or \$ Per Capita
2000	0.43	.	.	86	.
2001	0.47	.	.	76	.
2002	0.48	.	.	75	.
2003	0.52	.	.	69	.
2004	0.54	.	.	72	.
2005	0.63	.	.	59	.
2006	0.66	.	.	55	.
2007	0.82	.	.	38	.
2008	0.93	.	.	29	.
2009	0.96	.	.	29	.
2010	0.81	.	.	45	.
2011	0.91	.	.	33	.
2012	0.91	.	.	36	.
2013	0.82	.	.	43	.
2014	0.97	.	.	31	.
2015	0.88	.	.	35	.
2016	0.80	.	.	38	.
2017	0.82	.	.	32	.
2018	0.76	.	.	44	.
2019	0.74	.	.	51	.
2020	0.74	.	.	53	.
2021	0.73	.	.	58	.

County: county value. Kansas: state value. County Rank: highest county value ranked #1. (\$000): thousands of dollars. Nonmetro Kansas: Kansas total less Metropolitan Areas as defined by the Office of Management and Budget (OMB; released 3/6/2020). Per 1000: For nonmoney amounts, Per 1000=(county value / county population for the same year as the data) x 1000. \$ Per capita=(county value / county population for the same year as the data). Value= . indicates missing or suppressed data or value not calculated.

Employment

CIVILIAN LABOR FORCE (BLS-Place of Residence; 1990-)

U.S. Department of Labor, Bureau of Labor Statistics (BLS)



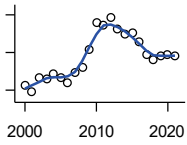
Year	County	State of Kansas	Non Metro Kansas	County Rank	Per 1000 or \$ Per Capita
2000	2,074	1,402,606	482,229	76	481.5
2001	2,047	1,398,521	475,280	76	482.1
2002	2,130	1,419,335	482,428	76	507.9
2003	2,120	1,441,065	490,161	76	503.1
2004	2,167	1,458,910	494,509	76	511.3
2005	2,135	1,458,767	490,047	76	502.4
2006	2,100	1,467,553	498,594	76	502.2
2007	2,155	1,485,414	497,048	75	515.1
2008	2,183	1,493,365	504,522	74	525.6
2009	2,290	1,512,572	516,311	73	546.8
2010	2,446	1,500,463	492,594	73	574.7
2011	2,427	1,498,000	492,563	73	573.1
2012	2,471	1,490,808	489,349	73	586.2
2013	2,395	1,489,395	485,484	72	580.5
2014	2,360	1,494,203	481,813	73	575.5
2015	2,365	1,493,782	477,546	73	578.4
2016	2,315	1,491,961	468,258	73	575.0
2017	2,240	1,488,346	461,063	73	557.4
2018	2,205	1,488,027	456,866	73	552.6
2019	2,230	1,497,517	455,858	72	562.0
2020	2,240	1,493,706	452,935	72	592.6
2021	2,223	1,495,665	453,398	72	606.1

County: county value. Kansas: state value. County Rank: highest county value ranked #1. (\$000): thousands of dollars. Nonmetro Kansas: Kansas total less Metropolitan Areas as defined by the Office of Management and Budget (OMB; released 3/6/2020). Per 1000: For nonmoney amounts, Per 1000=(county value / county population for the same year as the data) x 1000. \$ Per capita=(county value / county population for the same year as the data). Value= . indicates missing or suppressed data or value not calculated.

Employment

EMPLOYED (BLS-Place of Residence; 1990-)

U.S. Department of Labor, Bureau of Labor Statistics (BLS)

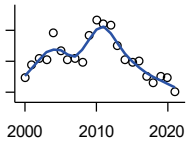


Year	County	State of Kansas	Non Metro Kansas	County Rank	Per 1000 or \$ Per Capita
2000	2,025	1,349,841	464,962	76	470.2
2001	1,989	1,338,775	455,154	76	468.4
2002	2,068	1,347,163	461,241	76	493.1
2003	2,059	1,361,115	467,622	76	488.6
2004	2,089	1,378,355	470,330	76	492.9
2005	2,068	1,384,654	467,722	75	486.6
2006	2,039	1,402,950	479,174	76	487.6
2007	2,093	1,422,109	477,983	75	500.2
2008	2,124	1,425,022	484,056	74	511.4
2009	2,213	1,408,142	485,797	73	528.4
2010	2,359	1,396,172	461,635	73	554.3
2011	2,343	1,402,198	463,723	73	553.2
2012	2,388	1,405,638	463,376	73	566.5
2013	2,325	1,410,470	461,405	72	563.5
2014	2,299	1,426,892	461,797	73	560.6
2015	2,306	1,431,533	457,899	73	564.0
2016	2,255	1,431,920	449,356	73	560.1
2017	2,190	1,434,516	445,003	73	544.9
2018	2,159	1,439,329	442,716	73	541.1
2019	2,180	1,450,705	442,108	72	549.4
2020	2,191	1,408,965	433,229	72	579.6
2021	2,183	1,447,323	441,159	72	595.1

County: county value. Kansas: state value. County Rank: highest county value ranked #1. (\$000): thousands of dollars. Nonmetro Kansas: Kansas total less Metropolitan Areas as defined by the Office of Management and Budget (OMB; released 3/6/2020). Per 1000: For nonmoney amounts, Per 1000=(county value / county population for the same year as the data) x 1000. \$ Per capita=(county value / county population for the same year as the data). Value= . indicates missing or suppressed data or value not calculated.

Employment

UNEMPLOYED (BLS-Place of Residence; 1990-)



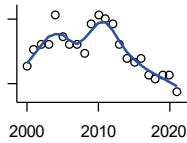
U.S. Department of Labor, Bureau of Labor Statistics (BLS)

Year	County	State of Kansas	Non Metro Kansas	County Rank	Per 1000 or \$ Per Capita
2000	49	52,765	17,267	85	11.4
2001	58	59,746	20,126	83	13.7
2002	62	72,172	21,187	83	14.8
2003	61	79,950	22,539	85	14.5
2004	78	80,555	24,179	82	18.4
2005	67	74,113	22,325	84	15.8
2006	61	64,603	19,420	83	14.6
2007	62	63,305	19,065	83	14.8
2008	59	68,343	20,466	84	14.2
2009	77	104,430	30,514	84	18.4
2010	87	104,291	30,959	83	20.4
2011	84	95,802	28,840	81	19.8
2012	83	85,170	25,973	82	19.7
2013	70	78,925	24,079	83	17.0
2014	61	67,311	20,016	82	14.9
2015	59	62,249	19,647	84	14.4
2016	60	60,041	18,902	81	14.9
2017	50	53,830	16,060	81	12.4
2018	46	48,698	14,150	79	11.5
2019	50	46,812	13,750	75	12.6
2020	49	84,741	19,706	83	13.0
2021	40	48,342	12,239	76	10.9

County: county value. Kansas: state value. County Rank: highest county value ranked #1. (\$000): thousands of dollars. Nonmetro Kansas: Kansas total less Metropolitan Areas as defined by the Office of Management and Budget (OMB; released 3/6/2020). Per 1000: For nonmoney amounts, Per 1000=(county value / county population for the same year as the data) x 1000. \$ Per capita=(county value / county population for the same year as the data). Value= . indicates missing or suppressed data or value not calculated.

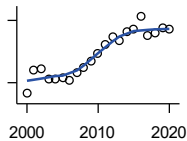
Employment

UNEMPLOYMENT RATE (BLS-Place of Residence; 1990-)



U.S. Department of Labor, Bureau of Labor Statistics (BLS)

Year	County	State of Kansas	Non Metro Kansas	County Rank	Per 1000 or \$ Per Capita
2000	2.4	3.8	3.6	100	.
2001	2.8	4.3	4.2	98	.
2002	2.9	5.1	4.4	102	.
2003	2.9	5.5	4.6	103	.
2004	3.6	5.5	4.9	92	.
2005	3.1	5.1	4.6	100	.
2006	2.9	4.4	3.9	99	.
2007	2.9	4.3	3.8	99	.
2008	2.7	4.6	4.1	103	.
2009	3.4	6.9	5.9	98	.
2010	3.6	7.0	6.3	97	.
2011	3.5	6.4	5.9	98	.
2012	3.4	5.7	5.3	93	.
2013	2.9	5.3	5.0	100	.
2014	2.6	4.5	4.2	99	.
2015	2.5	4.2	4.1	98	.
2016	2.6	4.0	4.0	96	.
2017	2.2	3.6	3.5	102	.
2018	2.1	3.3	3.1	98	.
2019	2.2	3.1	3.0	97	.
2020	2.2	5.7	4.4	98	.
2021	1.8	3.2	2.7	95	.



BEA EMPLOYMENT: TOTAL (Place of Work)

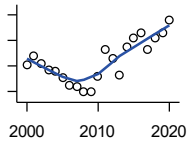
U.S. Bureau of Economic Analysis, Regional Economic Information System (REIS)

Year	County	State of Kansas	Non Metro Kansas	County Rank	Per 1000 or \$ Per Capita
2000	2,295	1,760,312	604,361	83	532.9
2001	2,526	1,767,601	592,672	77	594.9
2002	2,532	1,746,077	585,387	77	603.7
2003	2,440	1,733,694	577,860	77	579.0
2004	2,433	1,750,876	578,750	77	574.1
2005	2,449	1,765,650	577,562	77	576.2
2006	2,423	1,795,507	583,041	77	579.4
2007	2,499	1,844,355	591,924	77	597.3
2008	2,550	1,858,069	594,368	76	614.0
2009	2,610	1,813,184	580,972	76	623.2
2010	2,686	1,801,873	579,758	75	631.1
2011	2,774	1,819,044	583,725	71	655.0
2012	2,847	1,841,393	591,748	71	675.4
2013	2,809	1,869,054	597,236	72	680.8
2014	2,897	1,895,859	601,291	70	706.4
2015	2,911	1,910,954	598,589	70	711.9
2016	3,040	1,916,152	592,580	69	755.1
2017	2,850	1,914,179	584,337	72	709.1
2018	2,882	1,926,242	580,213	70	722.3
2019	2,926	1,925,204	574,496	69	737.4
2020	2,911	1,851,247	556,671	69	770.1

County: county value. Kansas: state value. County Rank: highest county value ranked #1. (\$000): thousands of dollars. Nonmetro Kansas: Kansas total less Metropolitan Areas as defined by the Office of Management and Budget (OMB; released 3/6/2020). Per 1000: For nonmoney amounts, Per 1000=(county value / county population for the same year as the data) x 1000. \$ Per capita=(county value / county population for the same year as the data). Value= . indicates missing or suppressed data or value not calculated.

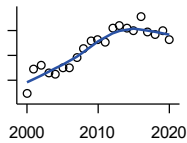
Employment

BEA EMPLOYMENT: FARM



U.S. Bureau of Economic Analysis,
Regional Economic Information System
(REIS)

Year	County	State of Kansas	Non Metro Kansas	County Rank	Per 1000 or \$ Per Capita
2000	605	77,477	59,088	64	140.5
2001	638	78,177	59,647	61	150.3
2002	607	70,532	53,893	52	144.7
2003	582	68,516	52,099	51	138.1
2004	581	67,586	51,246	47	137.1
2005	553	66,829	50,386	50	130.1
2006	526	64,910	48,728	52	125.8
2007	518	65,639	49,037	53	123.8
2008	497	63,820	47,682	56	119.7
2009	497	62,798	46,960	54	118.7
2010	561	63,882	47,984	45	131.8
2011	663	65,761	49,707	39	156.6
2012	627	63,753	48,167	39	148.8
2013	565	62,739	47,255	46	136.9
2014	676	64,308	48,722	34	164.8
2015	711	64,416	48,927	33	173.9
2016	727	63,840	48,539	31	180.6
2017	666	61,876	46,936	34	165.7
2018	711	63,233	48,069	31	178.2
2019	730	63,300	48,167	31	184.0
2020	780	64,281	49,038	26	206.3



BEA EMPLOYMENT: NON-FARM

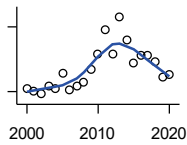
U.S. Bureau of Economic Analysis,
Regional Economic Information System
(REIS)

Year	County	State of Kansas	Non Metro Kansas	County Rank	Per 1000 or \$ Per Capita
2000	1,690	1,682,835	545,273	88	392.4
2001	1,888	1,689,424	533,025	77	444.7
2002	1,925	1,675,545	531,494	77	459.0
2003	1,858	1,665,178	525,761	77	440.9
2004	1,852	1,683,290	527,504	77	437.0
2005	1,896	1,698,821	527,176	77	446.1
2006	1,897	1,730,597	534,313	77	453.6
2007	1,981	1,778,716	542,887	77	473.5
2008	2,053	1,794,249	546,686	76	494.3
2009	2,113	1,750,386	534,012	76	504.5
2010	2,125	1,737,991	531,774	76	499.3
2011	2,111	1,753,283	534,018	75	498.5
2012	2,220	1,777,640	543,581	73	526.7
2013	2,244	1,806,315	549,981	74	543.9
2014	2,221	1,831,551	552,569	75	541.6
2015	2,200	1,846,538	549,662	76	538.0
2016	2,313	1,852,312	544,041	73	574.5
2017	2,184	1,852,303	537,401	73	543.4
2018	2,171	1,863,009	532,144	73	544.1
2019	2,196	1,861,904	526,329	72	553.4
2020	2,131	1,786,966	507,633	71	563.8

County: county value. Kansas: state value. County Rank: highest county value ranked #1. (\$000): thousands of dollars. Nonmetro Kansas: Kansas total less Metropolitan Areas as defined by the Office of Management and Budget (OMB; released 3/6/2020). Per 1000: For nonmoney amounts, Per 1000=(county value / county population for the same year as the data) x 1000. \$ Per capita=(county value / county population for the same year as the data). Value= . indicates missing or suppressed data or value not calculated.

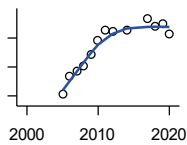
Employment

AVERAGE WAGE PER JOB (\$)



U.S. Bureau of Economic Analysis,
Regional Economic Information System
(REIS)

Year	County	State of Kansas	Non Metro Kansas	County Rank	Per 1000 or \$ Per Capita
2000	42,232	31,854	24,396	1	.
2001	40,439	32,859	26,379	1	.
2002	37,578	33,707	26,331	5	.
2003	44,772	35,078	28,911	1	.
2004	42,294	35,932	29,747	4	.
2005	56,809	37,467	31,646	1	.
2006	41,142	40,038	31,993	9	.
2007	45,641	41,500	33,484	6	.
2008	48,608	44,197	36,256	8	.
2009	60,141	43,860	35,739	2	.
2010	74,802	45,370	38,631	1	.
2011	97,939	48,280	42,324	1	.
2012	75,103	50,549	42,015	3	.
2013	109,301	52,629	46,073	2	.
2014	87,363	51,959	43,562	3	.
2015	65,943	52,250	42,320	5	.
2016	73,028	51,664	41,964	2	.
2017	73,360	53,007	42,137	2	.
2018	67,344	54,790	44,514	3	.
2019	53,863	56,956	45,336	16	.
2020	56,152	60,597	49,183	23	.



BEA EMPLOYMENT: FORESTRY, FISHING, HUNTING, AND AG SUPPORT

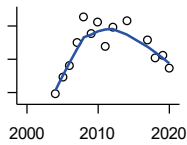
U.S. Bureau of Economic Analysis,
Regional Economic Information System
(REIS)

Year	County	State of Kansas	Non Metro Kansas	County Rank	Per 1000 or \$ Per Capita
2001	.	7,059	.	.	.
2002	.	8,045	.	.	.
2003	.	7,313	.	.	.
2004	.	7,623	.	.	.
2005	163	7,962	.	4	.
2006	188	7,748	.	4	.
2007	194	8,228	.	4	.
2008	202	8,646	.	6	.
2009	217	8,982	.	3	.
2010	237	9,251	.	3	.
2011	251	9,410	.	1	.
2012	249	9,691	.	2	.
2013	.	10,014	.	.	.
2014	251	10,708	.	4	.
2015	.	10,020	.	.	.
2016	.	10,383	.	.	.
2017	267	10,693	.	3	.
2018	257	11,103	.	3	.
2019	259	10,768	.	5	.
2020	245	10,529	.	5	.

County: county value. Kansas: state value. County Rank: highest county value ranked #1. (\$000): thousands of dollars. Nonmetro Kansas: Kansas total less Metropolitan Areas as defined by the Office of Management and Budget (OMB; released 3/6/2020). Per 1000: For nonmoney amounts, Per 1000=(county value / county population for the same year as the data) x 1000. \$ Per capita=(county value / county population for the same year as the data). Value= . indicates missing or suppressed data or value not calculated.

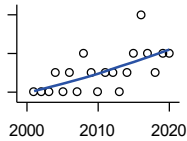
Employment

BEA EMPLOYMENT: MINING



U.S. Bureau of Economic Analysis,
Regional Economic Information System
(REIS)

Year	County	State of Kansas	Non Metro Kansas	County Rank	Per 1000 or \$ Per Capita
2001	.	19,592	.	.	.
2002	.	17,635	.	.	.
2003	.	19,869	.	.	.
2004	78	18,466	.	37	.
2005	99	19,489	.	32	.
2006	112	22,403	.	34	.
2007	140	24,043	.	31	.
2008	171	31,467	.	30	.
2009	151	29,941	.	30	.
2010	164	36,124	.	35	.
2011	136	31,658	.	34	.
2012	159	42,405	.	38	.
2013	.	46,585	.	.	.
2014	166	45,526	.	41	.
2015	.	46,460	.	.	.
2016	.	48,555	.	.	.
2017	143	40,710	.	38	.
2018	122	32,021	.	41	.
2019	125	29,101	.	40	.
2020	110	26,272	.	38	.



BEA EMPLOYMENT: UTILITIES

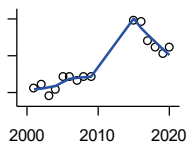
U.S. Bureau of Economic Analysis,
Regional Economic Information System
(REIS)

Year	County	State of Kansas	Non Metro Kansas	County Rank	Per 1000 or \$ Per Capita
2001	1	7,608	.	31	.
2002	1	7,087	.	33	.
2003	1	7,253	.	31	.
2004	2	7,356	.	18	.
2005	1	7,447	.	23	.
2006	2	7,478	.	21	.
2007	1	7,584	.	33	.
2008	3	7,855	.	27	.
2009	2	7,941	.	26	.
2010	1	8,028	.	30	.
2011	2	8,213	.	22	.
2012	2	8,155	.	17	.
2013	1	7,949	.	24	.
2014	2	7,985	.	20	.
2015	3	7,040	.	24	.
2016	5	7,133	.	21	.
2017	3	6,838	.	24	.
2018	2	6,639	.	23	.
2019	3	6,492	.	25	.
2020	3	6,573	.	34	.

County: county value. Kansas: state value. County Rank: highest county value ranked #1. (\$000): thousands of dollars. Nonmetro Kansas: Kansas total less Metropolitan Areas as defined by the Office of Management and Budget (OMB; released 3/6/2020). Per 1000: For nonmoney amounts, Per 1000=(county value / county population for the same year as the data) x 1000. \$ Per capita=(county value / county population for the same year as the data). Value= . indicates missing or suppressed data or value not calculated.

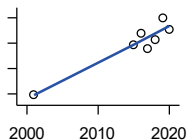
Employment

**BEA EMPLOYMENT:
CONSTRUCTION**



U.S. Bureau of Economic Analysis,
Regional Economic Information System
(REIS)

Year	County	State of Kansas	Non Metro Kansas	County Rank	Per 1000 or \$ Per Capita
2001	85	92,647	27,972	77	.
2002	89	90,370	.	73	.
2003	76	91,725	26,681	77	.
2004	83	93,271	.	72	.
2005	98	94,836	.	72	.
2006	97	97,449	.	69	.
2007	93	99,119	29,179	76	.
2008	98	97,741	.	73	.
2009	97	90,165	28,077	74	.
2010	.	84,708	26,402	.	.
2011	.	83,332	25,999	.	.
2012	.	85,966	.	.	.
2013	.	88,094	.	.	.
2014	.	91,143	.	.	.
2015	159	91,458	27,583	66	.
2016	157	93,539	27,151	65	.
2017	136	92,046	25,579	66	.
2018	130	92,985	25,530	65	.
2019	123	94,858	25,701	66	.
2020	129	94,186	26,085	64	.



**BEA EMPLOYMENT:
MANUFACTURING**

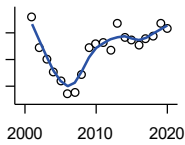
U.S. Bureau of Economic Analysis,
Regional Economic Information System
(REIS)

Year	County	State of Kansas	Non Metro Kansas	County Rank	Per 1000 or \$ Per Capita
2001	59	199,980	73,170	76	.
2002	.	188,905	70,691	.	.
2003	.	179,013	68,418	.	.
2004	.	181,738	69,669	.	.
2005	.	185,459	71,072	.	.
2006	.	188,047	71,704	.	.
2007	.	192,930	73,488	.	.
2008	.	193,116	72,235	.	.
2009	.	173,854	64,961	.	.
2010	.	166,000	62,884	.	.
2011	.	167,302	64,361	.	.
2012	.	169,308	65,944	.	.
2013	.	170,113	67,251	.	.
2014	.	169,307	68,299	.	.
2015	99	168,324	66,978	70	.
2016	108	167,723	65,796	69	.
2017	96	168,438	66,795	71	.
2018	103	171,778	68,181	70	.
2019	120	173,605	67,879	67	.
2020	111	165,228	65,658	68	.

County: county value. Kansas: state value. County Rank: highest county value ranked #1. (\$000): thousands of dollars. Nonmetro Kansas: Kansas total less Metropolitan Areas as defined by the Office of Management and Budget (OMB; released 3/6/2020). Per 1000: For nonmoney amounts, Per 1000=(county value / county population for the same year as the data) x 1000. \$ Per capita=(county value / county population for the same year as the data). Value= . indicates missing or suppressed data or value not calculated.

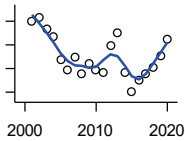
Employment

BEA EMPLOYMENT: WHOLESALE TRADE



U.S. Bureau of Economic Analysis,
Regional Economic Information System
(REIS)

Year	County	State of Kansas	Non Metro Kansas	County Rank	Per 1000 or \$ Per Capita
2001	152	65,698	.	48	.
2002	129	65,408	.	53	.
2003	120	63,504	.	54	.
2004	111	64,434	.	57	.
2005	104	64,587	.	57	.
2006	94	64,743	.	61	.
2007	95	65,993	.	57	.
2008	109	67,693	.	55	.
2009	129	65,954	.	50	.
2010	132	64,376	.	51	.
2011	133	64,712	.	54	.
2012	127	63,973	.	52	.
2013	147	64,999	.	47	.
2014	137	69,295	.	50	.
2015	135	68,444	.	53	.
2016	131	64,843	.	48	.
2017	136	65,014	.	43	.
2018	138	64,745	.	47	.
2019	147	63,324	.	42	.
2020	143	60,844	.	49	.



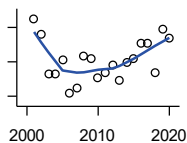
BEA EMPLOYMENT: RETAIL TRADE

U.S. Bureau of Economic Analysis,
Regional Economic Information System
(REIS)

Year	County	State of Kansas	Non Metro Kansas	County Rank	Per 1000 or \$ Per Capita
2001	180	198,069	.	82	.
2002	183	196,112	.	82	.
2003	173	194,545	64,173	85	.
2004	167	192,957	63,265	85	.
2005	147	191,656	62,506	89	.
2006	139	190,391	62,082	91	.
2007	150	190,643	61,716	85	.
2008	136	185,907	59,783	91	.
2009	144	181,262	58,714	88	.
2010	139	177,858	57,470	89	.
2011	137	180,548	57,734	88	.
2012	159	180,596	57,349	82	.
2013	170	183,245	57,556	78	.
2014	137	185,899	57,855	90	.
2015	120	188,421	58,516	92	.
2016	130	188,505	57,864	91	.
2017	136	186,633	56,715	88	.
2018	141	183,323	.	84	.
2019	151	177,240	53,427	80	.
2020	165	171,777	52,563	77	.

County: county value. Kansas: state value. County Rank: highest county value ranked #1. (\$000): thousands of dollars. Nonmetro Kansas: Kansas total less Metropolitan Areas as defined by the Office of Management and Budget (OMB; released 3/6/2020). Per 1000: For nonmoney amounts, Per 1000=(county value / county population for the same year as the data) x 1000. \$ Per capita=(county value / county population for the same year as the data). Value= . indicates missing or suppressed data or value not calculated.

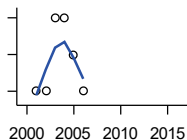
Employment



**BEA EMPLOYMENT:
TRANSPORTATION AND
WAREHOUSING**

U.S. Bureau of Economic Analysis,
Regional Economic Information System
(REIS)

Year	County	State of Kansas	Non Metro Kansas	County Rank	Per 1000 or \$ Per Capita
2001	155	56,302	.	23	.
2002	146	55,319	.	29	.
2003	123	55,509	.	30	.
2004	123	55,479	.	30	.
2005	131	56,287	.	30	.
2006	112	57,506	.	36	.
2007	115	59,277	.	38	.
2008	133	58,725	.	33	.
2009	132	56,238	.	32	.
2010	121	55,179	.	31	.
2011	124	57,449	.	26	.
2012	128	59,756	.	25	.
2013	119	59,780	.	31	.
2014	130	60,565	.	31	.
2015	132	63,256	.	30	.
2016	141	65,705	.	25	.
2017	141	70,641	.	27	.
2018	124	75,308	.	31	.
2019	149	81,209	.	27	.
2020	144	80,543	.	33	.



BEA EMPLOYMENT: INFORMATION

U.S. Bureau of Economic Analysis,
Regional Economic Information System
(REIS)

Year	County	State of Kansas	Non Metro Kansas	County Rank	Per 1000 or \$ Per Capita
2001	6	54,895	.	74	.
2002	6	50,728	.	75	.
2003	8	48,328	6,860	73	.
2004	8	45,617	.	72	.
2005	7	43,840	.	71	.
2006	6	43,925	.	68	.
2007	.	45,115	.	.	.
2008	.	42,958	.	.	.
2009	.	38,677	.	.	.
2010	.	33,432	.	.	.
2011	.	32,160	.	.	.
2012	.	31,829	.	.	.
2013	.	31,737	.	.	.
2014	.	32,316	.	.	.
2015	.	25,282	.	.	.
2016	.	24,998	.	.	.

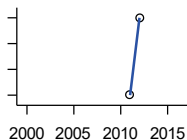
County: county value. Kansas: state value. County Rank: highest county value ranked #1. (\$000): thousands of dollars. Nonmetro Kansas: Kansas total less Metropolitan Areas as defined by the Office of Management and Budget (OMB; released 3/6/2020). Per 1000: For nonmoney amounts, Per 1000=(county value / county population for the same year as the data) x 1000. \$ Per capita=(county value / county population for the same year as the data). Value= . indicates missing or suppressed data or value not calculated.

Employment

BEA EMPLOYMENT: FINANCE AND INSURANCE

U.S. Bureau of Economic Analysis,
Regional Economic Information System
(REIS)

Year	County	State of Kansas	Non Metro Kansas	County Rank	Per 1000 or \$ Per Capita
2001	.	76,118	.	.	.
2002	.	78,206	.	.	.
2003	.	78,441	.	.	.
2004	.	78,350	.	.	.
2005	.	78,952	.	.	.
2006	.	80,900	.	.	.
2007	.	86,094	.	.	.
2008	.	89,590	.	.	.
2009	.	93,573	.	.	.
2010	.	92,428	.	.	.
2011	.	99,495	.	.	.
2012	.	98,640	.	.	.
2013	.	99,998	.	.	.
2014	.	98,209	.	.	.
2015	.	100,534	.	.	.
2016	.	102,699	.	.	.



BEA EMPLOYMENT: REAL ESTATE, RENTAL, AND LEASING

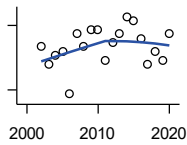
U.S. Bureau of Economic Analysis,
Regional Economic Information System
(REIS)

Year	County	State of Kansas	Non Metro Kansas	County Rank	Per 1000 or \$ Per Capita
2001	.	45,237	.	.	.
2002	.	44,970	.	.	.
2003	.	47,095	.	.	.
2004	.	50,181	.	.	.
2005	.	53,335	.	.	.
2006	.	55,342	.	.	.
2007	.	57,694	.	.	.
2008	.	57,933	.	.	.
2009	.	57,132	.	.	.
2010	.	59,578	.	.	.
2011	51	61,821	.	55	.
2012	54	60,432	.	54	.
2013	.	62,134	.	.	.
2014	.	64,705	.	.	.
2015	.	66,604	.	.	.
2016	.	68,395	.	.	.

County: county value. Kansas: state value. County Rank: highest county value ranked #1. (\$000): thousands of dollars. Nonmetro Kansas: Kansas total less Metropolitan Areas as defined by the Office of Management and Budget (OMB; released 3/6/2020). Per 1000: For nonmoney amounts, Per 1000=(county value / county population for the same year as the data) x 1000. \$ Per capita=(county value / county population for the same year as the data). Value= . indicates missing or suppressed data or value not calculated.

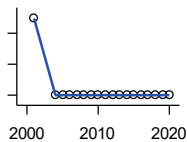
Employment

BEA EMPLOYMENT: PROFESSIONAL AND TECHNICAL SERVICES



U.S. Bureau of Economic Analysis,
Regional Economic Information System
(REIS)

Year	County	State of Kansas	Non Metro Kansas	County Rank	Per 1000 or \$ Per Capita
2001	.	81,396	.	.	.
2002	55	80,684	.	61	.
2003	51	80,311	.	56	.
2004	53	85,550	.	58	.
2005	54	85,003	.	61	.
2006	44	87,381	.	66	.
2007	58	92,717	.	65	.
2008	55	95,362	.	67	.
2009	59	93,232	.	62	.
2010	59	93,037	.	62	.
2011	52	93,237	.	69	.
2012	56	95,360	.	67	.
2013	58	100,795	.	69	.
2014	62	102,210	.	66	.
2015	61	105,625	.	70	.
2016	57	108,059	.	66	.
2017	51	109,041	.	66	.
2018	54	110,513	.	69	.
2019	52	109,637	.	66	.
2020	58	108,634	.	63	.



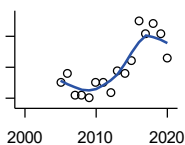
BEA EMPLOYMENT: MANAGEMENT OF COMPANIES AND ENTERPRISES

U.S. Bureau of Economic Analysis,
Regional Economic Information System
(REIS)

Year	County	State of Kansas	Non Metro Kansas	County Rank	Per 1000 or \$ Per Capita
2001	1	13,832	.	31	.
2002	.	12,576	.	.	.
2003	.	11,135	.	.	.
2004	0	10,614	.	67	.
2005	0	11,811	.	66	.
2006	0	13,061	.	66	.
2007	0	13,398	.	69	.
2008	0	15,234	.	72	.
2009	0	14,849	.	75	.
2010	0	16,579	.	75	.
2011	0	15,343	.	75	.
2012	0	15,075	.	82	.
2013	0	16,667	.	81	.
2014	0	20,441	.	79	.
2015	0	29,604	.	78	.
2016	0	27,824	.	77	.
2017	0	27,767	.	77	.
2018	0	28,862	.	75	.
2019	0	30,512	.	74	.
2020	0	25,648	.	74	.

County: county value. Kansas: state value. County Rank: highest county value ranked #1. (\$000): thousands of dollars. Nonmetro Kansas: Kansas total less Metropolitan Areas as defined by the Office of Management and Budget (OMB; released 3/6/2020). Per 1000: For nonmoney amounts, Per 1000=(county value / county population for the same year as the data) x 1000. \$ Per capita=(county value / county population for the same year as the data). Value= . indicates missing or suppressed data or value not calculated.

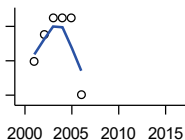
Employment



**BEA EMPLOYMENT:
ADMINISTRATIVE AND WASTE
SERVICES**

U.S. Bureau of Economic Analysis,
Regional Economic Information System
(REIS)

Year	County	State of Kansas	Non Metro Kansas	County Rank	Per 1000 or \$ Per Capita
2001	.	81,573	.	.	.
2002	.	82,992	.	.	.
2003	.	81,298	.	.	.
2004	.	85,721	.	.	.
2005	55	89,933	.	45	.
2006	58	93,688	.	46	.
2007	51	98,865	.	51	.
2008	51	97,440	.	50	.
2009	50	92,455	.	55	.
2010	55	93,675	.	53	.
2011	55	97,969	.	58	.
2012	52	100,490	.	58	.
2013	59	104,680	.	54	.
2014	58	107,218	18,836	55	.
2015	62	103,436	18,767	54	.
2016	75	103,233	18,428	52	.
2017	71	101,532	18,198	52	.
2018	74	102,062	.	46	.
2019	71	100,897	.	46	.
2020	63	95,361	.	56	.



**BEA EMPLOYMENT: EDUCATIONAL
SERVICES**

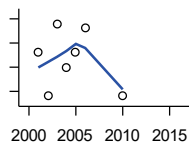
U.S. Bureau of Economic Analysis,
Regional Economic Information System
(REIS)

Year	County	State of Kansas	Non Metro Kansas	County Rank	Per 1000 or \$ Per Capita
2001	24	21,169	.	24	.
2002	27	22,173	.	25	.
2003	29	22,651	.	24	.
2004	29	21,601	.	27	.
2005	29	22,177	.	22	.
2006	20	22,438	.	25	.
2007	.	23,647	.	.	.
2008	.	24,653	.	.	.
2009	.	25,120	.	.	.
2010	.	26,071	.	.	.
2011	.	26,080	.	.	.
2012	.	26,625	.	.	.
2013	.	27,508	.	.	.
2014	.	28,708	.	.	.
2015	.	28,794	.	.	.
2016	.	27,996	.	.	.

County: county value. Kansas: state value. County Rank: highest county value ranked #1. (\$000): thousands of dollars. Nonmetro Kansas: Kansas total less Metropolitan Areas as defined by the Office of Management and Budget (OMB; released 3/6/2020). Per 1000: For nonmoney amounts, Per 1000=(county value / county population for the same year as the data) x 1000. \$ Per capita=(county value / county population for the same year as the data). Value= . indicates missing or suppressed data or value not calculated.

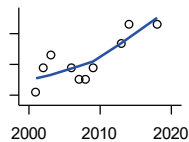
Employment

BEA EMPLOYMENT: HEALTH CARE AND SOCIAL ASSISTANCE



U.S. Bureau of Economic Analysis, Regional Economic Information System (REIS)

Year	County	State of Kansas	Non Metro Kansas	County Rank	Per 1000 or \$ Per Capita
2001	43	165,415	.	57	.
2002	34	168,198	.	61	.
2003	49	169,654	.	61	.
2004	40	172,796	.	66	.
2005	43	173,949	.	61	.
2006	48	176,919	.	56	.
2007	.	182,160	.	.	.
2008	.	186,051	.	.	.
2009	.	188,499	.	.	.
2010	34	188,383	.	52	.
2011	.	190,736	.	.	.
2012	.	192,991	.	.	.
2013	.	193,687	.	.	.
2014	.	194,632	.	.	.
2015	.	199,724	.	.	.
2016	.	201,830	.	.	.



BEA EMPLOYMENT: ARTS, ENTERTAINMENT, AND RECREATION

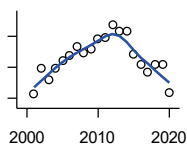
U.S. Bureau of Economic Analysis, Regional Economic Information System (REIS)

Year	County	State of Kansas	Non Metro Kansas	County Rank	Per 1000 or \$ Per Capita
2001	13	25,012	.	53	.
2002	17	25,668	.	51	.
2003	19	24,116	.	48	.
2004	.	25,355	.	.	.
2005	.	26,067	.	.	.
2006	17	26,505	.	56	.
2007	15	27,489	.	52	.
2008	15	27,501	.	54	.
2009	17	27,203	.	53	.
2010	.	27,479	.	.	.
2011	.	28,487	.	.	.
2012	.	30,729	.	.	.
2013	21	31,068	.	47	.
2014	24	32,154	.	47	.
2015	.	31,169	.	.	.
2016	.	32,373	.	.	.
2018	24	33,837	.	42	.

County: county value. Kansas: state value. County Rank: highest county value ranked #1. (\$000): thousands of dollars. Nonmetro Kansas: Kansas total less Metropolitan Areas as defined by the Office of Management and Budget (OMB; released 3/6/2020). Per 1000: For nonmoney amounts, Per 1000=(county value / county population for the same year as the data) x 1000. \$ Per capita=(county value / county population for the same year as the data). Value= . indicates missing or suppressed data or value not calculated.

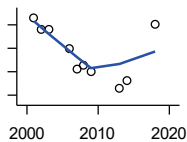
Employment

BEA EMPLOYMENT: GOVERNMENT AND GOVERNMENT ENTERPRISES



U.S. Bureau of Economic Analysis, Regional Economic Information System (REIS)

Year	County	State of Kansas	Non Metro Kansas	County Rank	Per 1000 or \$ Per Capita
2001	546	282,293	102,993	76	.
2002	578	281,427	103,581	73	.
2003	563	282,459	103,389	74	.
2004	579	283,877	103,946	73	.
2005	588	282,798	103,194	73	.
2006	595	288,372	104,103	72	.
2007	607	294,413	104,598	72	.
2008	598	298,580	104,718	72	.
2009	604	300,422	104,081	72	.
2010	616	303,875	103,382	71	.
2011	619	299,952	101,535	70	.
2012	635	298,068	101,180	69	.
2013	626	297,689	101,232	69	.
2014	626	296,956	100,634	68	.
2015	597	295,799	99,719	70	.
2016	583	291,536	98,520	71	.
2017	574	295,748	99,542	71	.
2018	584	298,105	99,499	70	.
2019	584	302,017	100,227	69	.
2020	548	292,583	96,477	70	.



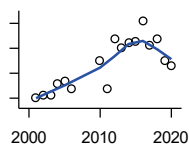
BEA EMPLOYMENT: ACCOMMODATION AND FOOD SERVICES

U.S. Bureau of Economic Analysis, Regional Economic Information System (REIS)

Year	County	State of Kansas	Non Metro Kansas	County Rank	Per 1000 or \$ Per Capita
2001	83	103,353	.	60	.
2002	78	103,692	.	59	.
2003	78	105,138	.	56	.
2004	.	106,694	.	.	.
2005	.	107,303	.	.	.
2006	70	109,888	.	62	.
2007	61	110,863	.	58	.
2008	63	111,092	.	62	.
2009	60	109,353	.	66	.
2010	.	108,628	.	.	.
2011	.	110,514	.	.	.
2012	.	112,574	.	.	.
2013	53	114,102	.	57	.
2014	56	115,768	.	60	.
2015	.	118,503	.	.	.
2016	.	119,764	.	.	.
2018	80	121,900	.	48	.

County: county value. Kansas: state value. County Rank: highest county value ranked #1. (\$000): thousands of dollars. Nonmetro Kansas: Kansas total less Metropolitan Areas as defined by the Office of Management and Budget (OMB; released 3/6/2020). Per 1000: For nonmoney amounts, Per 1000=(county value / county population for the same year as the data) x 1000. \$ Per capita=(county value / county population for the same year as the data). Value= . indicates missing or suppressed data or value not calculated.

Employment

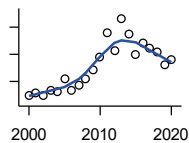


BEA EMPLOYMENT: OTHER SERVICES, EXCEPT PUBLIC ADMINISTRATION

U.S. Bureau of Economic Analysis, Regional Economic Information System (REIS)

Year	County	State of Kansas	Non Metro Kansas	County Rank	Per 1000 or \$ Per Capita
2001	120	92,176	.	78	.
2002	121	95,350	.	77	.
2003	121	95,821	32,629	79	.
2004	126	95,610	.	76	.
2005	127	95,930	32,555	77	.
2006	124	96,413	.	72	.
2007	.	98,444	.	.	.
2008	.	96,705	.	.	.
2009	.	95,534	.	.	.
2010	135	93,302	.	67	.
2011	124	94,865	.	66	.
2012	144	94,977	.	64	.
2013	140	95,471	.	66	.
2014	142	97,806	.	67	.
2015	143	98,041	.	63	.
2016	151	97,219	.	60	.
2017	141	96,568	.	61	.
2018	144	98,645	.	62	.
2019	135	98,638	.	62	.
2020	133	92,245	.	61	.

Income



BEA PER CAPITA PERSONAL INCOME (\$)

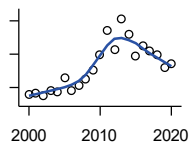
U.S. Bureau of Economic Analysis, Regional Economic Information System (REIS)

Year	County	State of Kansas	Non Metro Kansas	County Rank	Per 1000 or \$ Per Capita
2000	30,035	28,253	23,116	4	.
2001	31,624	29,112	24,576	7	.
2002	29,542	29,248	24,314	6	.
2003	33,178	30,074	26,017	5	.
2004	32,185	30,843	26,583	6	.
2005	41,853	32,545	28,356	2	.
2006	33,869	35,690	29,782	15	.
2007	37,278	38,057	32,034	18	.
2008	41,749	41,257	35,211	20	.
2009	48,553	39,431	33,876	3	.
2010	58,401	39,960	35,795	1	.
2011	76,238	43,015	39,041	1	.
2012	62,863	45,294	39,660	5	.
2013	86,321	46,174	41,747	2	.
2014	75,179	47,013	41,042	2	.
2015	59,718	47,332	40,638	8	.
2016	68,100	47,326	40,797	5	.
2017	64,759	48,756	41,314	5	.
2018	61,737	50,811	43,283	4	.
2019	52,604	52,820	44,491	22	.
2020	56,311	55,677	48,415	29	.

County: county value. Kansas: state value. County Rank: highest county value ranked #1. (\$000): thousands of dollars. Nonmetro Kansas: Kansas total less Metropolitan Areas as defined by the Office of Management and Budget (OMB; released 3/6/2020). Per 1000: For nonmoney amounts, Per 1000=(county value / county population for the same year as the data) x 1000. \$ Per capita=(county value / county population for the same year as the data). Value= . indicates missing or suppressed data or value not calculated.

Income

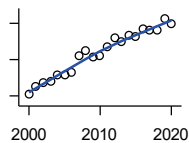
**SOURCES OF PERSONAL INCOME:
TOTAL PERSONAL INCOME (\$000)**



U.S. Bureau of Economic Analysis,
Regional Economic Information System
(REIS)

Year	County	State of Kansas	Non Metro Kansas	County Rank	Per 1000 or \$ Per Capita
2000	129,212	76,105,125	22,273,838	69	30,000.5
2001	134,276	78,664,651	23,411,174	71	31,624.1
2002	123,901	79,365,190	23,000,314	72	29,542.4
2003	139,814	81,890,340	24,494,191	70	33,178.5
2004	136,399	84,335,940	24,924,467	69	32,184.8
2005	177,875	89,346,228	26,452,291	60	41,852.9
2006	141,642	98,610,188	27,661,596	72	33,869.4
2007	155,972	105,943,199	29,715,946	72	37,278.2
2008	173,383	115,852,478	32,614,565	73	41,748.9
2009	203,338	111,697,350	31,394,702	63	48,552.5
2010	249,489	114,239,828	33,291,419	57	58,620.5
2011	322,870	123,558,772	36,221,488	50	76,238.5
2012	264,777	130,948,127	36,696,759	62	62,817.8
2013	355,988	133,979,908	38,513,959	49	86,279.2
2014	308,235	136,878,718	37,680,598	55	75,160.9
2015	244,068	138,336,768	37,081,851	61	59,688.9
2016	274,169	138,533,890	36,930,885	59	68,099.6
2017	260,268	142,729,689	37,104,963	58	64,759.4
2018	246,515	148,955,739	38,589,364	63	61,783.2
2019	209,733	154,961,001	39,424,148	70	52,856.1
2020	220,908	163,462,179	42,618,591	73	58,441.3

**SOURCES OF PERSONAL INCOME:
WAGES AND SALARIES (\$000)**



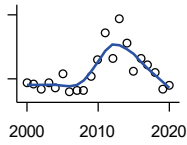
U.S. Bureau of Economic Analysis,
Regional Economic Information System
(REIS)

Year	County	State of Kansas	Non Metro Kansas	County Rank	Per 1000 or \$ Per Capita
2000	41,235	41,766,878	10,254,250	68	9,573.9
2001	45,080	43,269,734	10,518,206	67	10,617.1
2002	47,519	43,875,159	10,696,876	66	11,330.2
2003	48,099	44,488,560	10,894,971	63	11,414.1
2004	51,502	46,702,068	11,333,617	63	12,152.4
2005	51,291	48,537,956	11,614,130	65	12,068.5
2006	53,017	52,083,584	12,299,340	66	12,677.4
2007	61,879	55,442,368	13,093,908	63	14,789.4
2008	65,102	57,623,385	13,647,143	65	15,675.9
2009	61,672	55,605,578	13,199,674	65	14,725.9
2010	62,365	56,089,711	13,345,291	64	14,653.4
2011	66,855	58,104,706	13,856,458	63	15,786.3
2012	72,021	60,616,457	14,473,599	63	17,086.8
2013	69,622	61,872,023	14,781,792	64	16,874.0
2014	73,506	64,457,652	15,385,500	64	17,923.9
2015	72,412	66,729,598	15,454,485	64	17,709.0
2016	76,737	67,253,399	15,422,058	63	19,060.4
2017	76,426	68,830,861	15,731,853	63	19,016.2
2018	76,028	71,580,544	16,311,725	63	19,054.6
2019	82,639	74,404,771	16,882,299	63	20,826.4
2020	79,723	75,798,310	17,251,300	64	21,090.7

County: county value. Kansas: state value. County Rank: highest county value ranked #1. (\$000): thousands of dollars. Nonmetro Kansas: Kansas total less Metropolitan Areas as defined by the Office of Management and Budget (OMB; released 3/6/2020). Per 1000: For nonmoney amounts, Per 1000=(county value / county population for the same year as the data) x 1000. \$ Per capita=(county value / county population for the same year as the data). Value= . indicates missing or suppressed data or value not calculated.

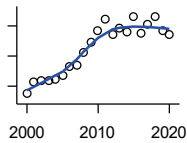
Income

**SOURCES OF PERSONAL INCOME:
PROPRIETORS-FARM (\$000)**



U.S. Bureau of Economic Analysis,
Regional Economic Information System
(REIS)

Year	County	State of Kansas	Non Metro Kansas	County Rank	Per 1000 or \$ Per Capita
2000	39,879	668,539	673,707	1	9,259.1
2001	36,641	779,473	769,336	1	8,629.5
2002	25,881	145,064	187,033	1	6,171.0
2003	39,310	1,281,076	1,195,298	2	9,328.4
2004	27,839	1,149,425	938,524	8	6,568.9
2005	62,855	1,609,604	1,469,139	1	14,789.4
2006	18,659	766,047	663,735	14	4,461.7
2007	21,816	1,131,607	1,040,350	12	5,214.1
2008	22,123	1,582,092	1,404,900	26	5,327.0
2009	56,337	1,585,995	1,390,349	1	13,452.0
2010	95,490	2,149,482	2,029,067	2	22,436.6
2011	156,684	3,188,519	2,989,880	1	36,997.4
2012	97,595	2,519,555	2,296,875	2	23,154.2
2013	189,694	4,499,190	4,158,419	2	45,975.3
2014	132,395	2,231,181	2,157,992	2	32,283.6
2015	67,507	1,300,733	1,294,370	4	16,509.4
2016	98,514	1,577,060	1,564,511	4	24,469.4
2017	82,680	838,480	838,290	2	20,572.3
2018	65,923	1,050,662	971,690	1	16,522.1
2019	26,349	998,038	878,247	6	6,640.4
2020	35,676	2,151,349	1,887,881	9	9,438.1



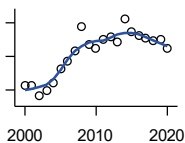
**SOURCES OF PERSONAL INCOME:
PROPRIETORS-NONFARM (\$000)**

U.S. Bureau of Economic Analysis,
Regional Economic Information System
(REIS)

Year	County	State of Kansas	Non Metro Kansas	County Rank	Per 1000 or \$ Per Capita
2000	7,437	4,580,476	1,493,470	77	1,726.7
2001	11,473	4,510,530	1,855,621	66	2,702.1
2002	11,998	5,036,100	1,966,784	67	2,860.8
2003	11,837	4,719,377	1,916,735	65	2,809.0
2004	12,451	4,003,922	2,073,898	63	2,937.9
2005	13,586	4,455,294	2,200,971	63	3,196.7
2006	16,650	7,343,524	2,694,895	59	3,981.3
2007	16,787	7,280,197	2,436,574	56	4,012.2
2008	21,094	9,255,953	2,971,923	50	5,079.2
2009	24,448	9,323,551	2,858,848	47	5,837.6
2010	28,244	9,658,261	3,498,040	51	6,636.3
2011	32,258	12,196,566	4,186,007	54	7,617.0
2012	27,241	15,773,140	4,446,004	59	6,462.9
2013	29,471	16,441,660	4,492,127	58	7,142.8
2014	27,797	15,954,254	4,455,081	60	6,778.1
2015	33,116	15,536,116	4,386,172	54	8,098.8
2016	27,552	14,075,310	3,783,829	58	6,843.5
2017	30,380	15,371,957	3,908,254	51	7,559.1
2018	33,111	15,716,877	4,238,775	48	8,298.5
2019	28,493	16,705,488	3,921,051	55	7,180.7
2020	26,957	16,718,952	3,823,329	55	7,131.5

County: county value. Kansas: state value. County Rank: highest county value ranked #1. (\$000): thousands of dollars. Nonmetro Kansas: Kansas total less Metropolitan Areas as defined by the Office of Management and Budget (OMB; released 3/6/2020). Per 1000: For nonmoney amounts, Per 1000=(county value / county population for the same year as the data) x 1000. \$ Per capita=(county value / county population for the same year as the data). Value= . indicates missing or suppressed data or value not calculated.

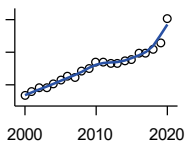
Income



**SOURCES OF PERSONAL INCOME:
DIVIDENDS,INTEREST,RENT(\$000)**

U.S. Bureau of Economic Analysis,
Regional Economic Information System
(REIS)

Year	County	State of Kansas	Non Metro Kansas	County Rank	Per 1000 or \$ Per Capita
2000	21,332	15,916,201	4,736,921	81	4,952.9
2001	21,300	15,770,830	4,699,417	82	5,016.5
2002	18,148	15,111,563	4,316,887	85	4,327.1
2003	19,830	15,370,764	4,360,311	80	4,705.7
2004	22,166	15,820,469	4,251,925	75	5,230.3
2005	26,407	17,147,069	4,485,387	68	6,213.4
2006	28,407	20,117,848	4,945,184	68	6,792.7
2007	31,599	22,269,186	5,526,219	71	7,552.3
2008	38,842	24,972,485	6,180,979	67	9,352.8
2009	33,428	21,453,879	5,308,474	67	7,981.9
2010	32,293	20,861,351	5,414,285	71	7,587.6
2011	34,940	23,387,567	5,781,075	71	8,250.3
2012	35,753	25,689,368	6,389,505	73	8,482.3
2013	34,485	24,832,212	5,984,811	72	8,358.0
2014	41,186	27,412,684	6,403,356	70	10,042.9
2015	37,272	27,244,414	6,423,685	71	9,115.2
2016	36,034	27,293,441	6,389,161	71	8,950.3
2017	35,379	28,385,472	6,700,156	73	8,802.9
2018	34,586	29,953,419	6,772,504	78	8,668.2
2019	35,059	30,820,276	6,957,987	78	8,835.4
2020	32,390	30,283,520	6,844,745	78	8,568.8



**SOURCES OF PERSONAL INCOME:
TRANSFER PAYMENTS (\$000)**

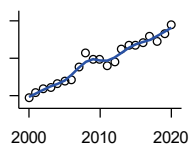
U.S. Bureau of Economic Analysis,
Regional Economic Information System
(REIS)

Year	County	State of Kansas	Non Metro Kansas	County Rank	Per 1000 or \$ Per Capita
2000	11,600	9,650,835	4,036,781	96	2,693.3
2001	12,880	10,549,124	4,355,457	95	3,033.4
2002	13,967	11,208,997	4,553,978	93	3,330.2
2003	14,030	11,709,049	4,702,911	95	3,329.4
2004	15,140	12,040,452	4,802,536	94	3,572.4
2005	16,442	12,696,735	5,059,314	94	3,868.7
2006	17,446	13,642,787	5,455,207	93	4,171.7
2007	17,429	14,686,821	5,775,024	95	4,165.6
2008	19,059	16,552,460	6,322,722	93	4,589.2
2009	19,928	18,025,603	6,790,962	93	4,758.4
2010	22,062	19,189,749	7,089,258	92	5,183.7
2011	22,049	19,625,770	7,255,825	93	5,206.4
2012	21,640	19,354,458	7,148,177	92	5,134.0
2013	21,569	19,639,358	7,185,636	93	5,227.6
2014	22,500	20,380,970	7,399,809	92	5,486.5
2015	22,774	21,116,856	7,623,577	92	5,569.6
2016	24,518	21,884,629	7,886,000	92	6,089.9
2017	24,674	22,559,744	8,062,517	92	6,139.3
2018	25,918	23,628,033	8,393,617	92	6,495.7
2019	28,016	25,050,174	8,845,371	92	7,060.5
2020	35,340	32,319,421	11,074,190	91	9,349.2

County: county value. Kansas: state value. County Rank: highest county value ranked #1. (\$000): thousands of dollars. Nonmetro Kansas: Kansas total less Metropolitan Areas as defined by the Office of Management and Budget (OMB; released 3/6/2020). Per 1000: For nonmoney amounts, Per 1000=(county value / county population for the same year as the data) x 1000. \$ Per capita=(county value / county population for the same year as the data). Value= . indicates missing or suppressed data or value not calculated.

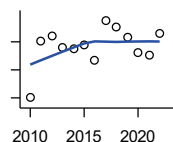
Income

**SOURCES OF PERSONAL INCOME:
LESS SOCIAL INSURANCE (\$000)**



U.S. Bureau of Economic Analysis,
Regional Economic Information System
(REIS)

Year	County	State of Kansas	Non Metro Kansas	County Rank	Per 1000 or \$ Per Capita
2000	5,726	6,655,813	1,663,044	70	1,329.5
2001	6,354	6,869,934	1,740,915	72	1,496.5
2002	6,761	7,008,361	1,778,636	70	1,612.1
2003	6,874	7,172,781	1,821,858	70	1,631.2
2004	7,320	7,556,560	1,904,014	70	1,727.2
2005	7,602	7,911,241	1,986,907	70	1,788.7
2006	7,632	8,406,937	2,090,313	72	1,825.0
2007	8,998	8,806,941	2,180,587	71	2,150.6
2008	10,535	9,207,010	2,299,399	68	2,536.7
2009	9,884	9,002,859	2,248,703	69	2,360.1
2010	9,891	9,235,760	2,321,191	69	2,324.0
2011	9,227	8,515,986	2,139,991	70	2,178.7
2012	9,632	8,816,128	2,195,919	69	2,285.2
2013	10,959	10,225,399	2,540,439	68	2,656.1
2014	11,323	10,609,601	2,635,009	68	2,761.0
2015	11,336	11,028,204	2,663,038	68	2,772.3
2016	11,714	10,915,915	2,604,579	66	2,909.6
2017	12,305	11,224,218	2,669,954	65	3,061.7
2018	11,787	11,749,229	2,797,106	70	2,954.1
2019	12,676	12,245,451	2,889,336	67	3,194.6
2020	13,579	12,715,152	3,027,656	66	3,592.3



HUD MEDIAN FAMILY INCOME

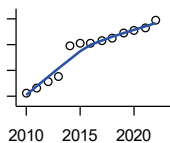
U.S. Department of Housing and Urban
Development (HUD)

Year	County	State of Kansas	Non Metro Kansas	County Rank	Per 1000 or \$ Per Capita
2010	55,100	63,100	.	39	.
2011	65,200	64,300	.	9	.
2012	66,100	65,200	.	9	.
2013	64,000	64,800	.	16	.
2014	63,700	64,400	.	27	.
2015	64,500	66,300	.	27	.
2016	61,700	66,700	.	33	.
2017	68,800	68,500	.	13	.
2018	67,600	73,100	.	32	.
2019	65,800	75,200	.	44	.
2020	63,100	76,500	.	68	.
2021	62,600	77,400	.	72	.
2022	66,500	87,800	.	79	.

County: county value. Kansas: state value. County Rank: highest county value ranked #1. (\$000): thousands of dollars. Nonmetro Kansas: Kansas total less Metropolitan Areas as defined by the Office of Management and Budget (OMB; released 3/6/2020). Per 1000: For nonmoney amounts, Per 1000=(county value / county population for the same year as the data) x 1000. \$ Per capita=(county value / county population for the same year as the data). Value= . indicates missing or suppressed data or value not calculated.

Income

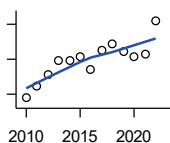
HUD 30% LOW-TO-MEDIUM INCOME (LMI) LIMIT - 4 PERSONS



U.S. Department of Housing and Urban Development (HUD)

Year	County	State of Kansas	Non Metro Kansas	County Rank	Per 1000 or \$ Per Capita
2010	16,550	.	.	39	.
2011	17,350	.	.	35	.
2012	18,200	.	.	24	.
2013	19,100	.	.	14	.
2014	23,850	.	.	105	.
2015	24,250	.	.	105	.
2016	24,300	.	.	105	.
2017	24,600	.	.	105	.
2018	25,100	21,950	.	105	.
2019	25,750	22,550	.	105	.
2020	26,200	22,950	.	105	.
2021	26,500	23,200	.	105	.
2022	27,750	25,950	.	105	.

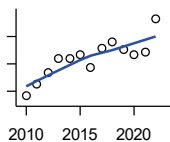
HUD 50% LOW-TO-MEDIUM INCOME (LMI) LIMIT - 4 PERSONS



U.S. Department of Housing and Urban Development (HUD)

Year	County	State of Kansas	Non Metro Kansas	County Rank	Per 1000 or \$ Per Capita
2010	27,550	.	.	39	.
2011	28,900	.	.	35	.
2012	30,300	.	.	24	.
2013	31,800	.	.	14	.
2014	31,850	.	.	26	.
2015	32,250	.	.	23	.
2016	30,850	.	.	34	.
2017	33,000	.	.	27	.
2018	33,800	36,550	.	31	.
2019	32,900	37,600	.	44	.
2020	32,300	38,250	.	104	.
2021	32,550	38,700	.	105	.
2022	36,400	43,300	.	105	.

HUD 80% LOW-TO-MEDIUM INCOME (LMI) LIMIT - 4 PERSONS



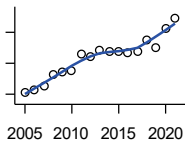
U.S. Department of Housing and Urban Development (HUD)

Year	County	State of Kansas	Non Metro Kansas	County Rank	Per 1000 or \$ Per Capita
2010	44,100	.	.	39	.
2011	46,250	.	.	35	.
2012	48,500	.	.	24	.
2013	50,900	.	.	14	.
2014	50,950	.	.	26	.
2015	51,600	.	.	23	.
2016	49,350	.	.	34	.
2017	52,800	.	.	27	.
2018	54,100	58,500	.	31	.
2019	52,650	60,150	.	44	.
2020	51,700	61,200	.	104	.
2021	52,100	61,900	.	105	.
2022	58,250	69,250	.	105	.

County: county value. Kansas: state value. County Rank: highest county value ranked #1. (\$000): thousands of dollars. Nonmetro Kansas: Kansas total less Metropolitan Areas as defined by the Office of Management and Budget (OMB; released 3/6/2020). Per 1000: For nonmoney amounts, Per 1000=(county value / county population for the same year as the data) x 1000. \$ Per capita=(county value / county population for the same year as the data). Value= . indicates missing or suppressed data or value not calculated.

Banking

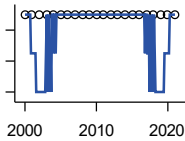
BANK DEPOSITS (1984-2004 in thousands; 2005- in millions)



Federal Deposit Insurance Corporation, Data Book, Operating Banks and Branches

Year	County	State of Kansas	Non Metro Kansas	County Rank	Per 1000 or \$ Per Capita
2005	83	48,304	17,000	78	19.5
2006	85	50,668	17,586	80	20.3
2007	91	54,057	18,517	81	21.7
2008	106	57,869	19,628	78	25.5
2009	109	57,763	20,031	78	26.0
2010	110	60,031	20,678	78	25.8
2011	132	61,094	21,347	73	31.2
2012	129	62,910	22,481	77	30.6
2013	137	64,547	22,795	76	33.2
2014	136	66,538	23,338	78	33.2
2015	136	68,160	23,367	77	33.3
2016	133	70,381	23,420	77	33.0
2017	135	73,329	23,928	76	33.6
2018	150	74,623	24,100	74	37.6
2019	141	76,436	24,488	76	35.5
2020	165	88,563	27,547	74	43.7
2021	178	97,055	30,122	74	48.5

NUMBER OF BANKS



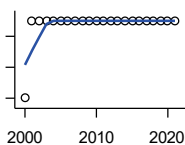
Federal Deposit Insurance Corporation, Data Book, Operating Banks and Branches

Year	County	State of Kansas	Non Metro Kansas	County Rank	Per 1000 or \$ Per Capita
2000	1	410	145	105	.
2001	1	410	136	105	.
2002	1	404	129	105	.
2003	1	397	121	105	.
2004	1	394	112	105	.
2005	1	388	101	105	.
2006	1	385	94	105	.
2007	1	382	91	105	.
2008	1	378	82	105	.
2009	1	374	79	105	.
2010	1	367	70	105	.
2011	1	359	61	105	.
2012	1	348	57	105	.
2013	1	332	45	105	.
2014	1	329	41	105	.
2015	1	320	31	105	.
2016	1	314	24	105	.
2017	1	301	13	105	.
2018	1	289	7	105	.
2019	1	279	3	105	.
2020	1	271	-1	105	.
2021	1	270	-6	105	.

County: county value. Kansas: state value. County Rank: highest county value ranked #1. (\$000): thousands of dollars. Nonmetro Kansas: Kansas total less Metropolitan Areas as defined by the Office of Management and Budget (OMB; released 3/6/2020). Per 1000: For nonmoney amounts, Per 1000=(county value / county population for the same year as the data) x 1000. \$ Per capita=(county value / county population for the same year as the data). Value= . indicates missing or suppressed data or value not calculated.

Banking

NUMBER OF BANKING OFFICES

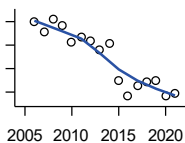


Federal Deposit Insurance Corporation, Data Book, Operating Banks and Branches

Year	County	State of Kansas	Non Metro Kansas	County Rank	Per 1000 or \$ Per Capita
2000	2	1,398	703	103	.
2001	3	1,424	708	98	.
2002	3	1,447	704	98	.
2003	3	1,461	708	98	.
2004	3	1,485	708	96	.
2005	3	1,505	711	97	.
2006	3	1,518	711	97	.
2007	3	1,543	717	97	.
2008	3	1,556	717	97	.
2009	3	1,569	716	97	.
2010	3	1,561	710	96	.
2011	3	1,559	707	97	.
2012	3	1,533	702	97	.
2013	3	1,518	696	97	.
2014	3	1,491	685	97	.
2015	3	1,472	675	97	.
2016	3	1,465	668	95	.
2017	3	1,452	666	95	.
2018	3	1,439	660	95	.
2019	3	1,439	663	95	.
2020	3	1,416	653	95	.
2021	3	1,392	641	95	.

Government

TANGIBLE ASSESSED VALUATION (KDoR, million\$; 2006-)



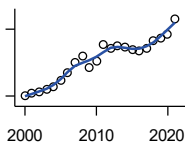
Kansas Department of Revenue, Division of Property Valuation, Statistical Report of Property Assessment and Taxation

Year	County	State of Kansas	Non Metro Kansas	County Rank	Per 1000 or \$ Per Capita
2006	250.4	28,964.3	10,316.9	21	59.9
2007	229.1	30,086.9	10,335.9	25	54.8
2008	255.5	31,000.3	10,856.9	22	61.5
2009	240.7	30,312.3	10,555.6	23	57.5
2010	206.9	29,450.2	10,158.7	29	48.6
2011	216.9	29,963.6	10,572.3	27	51.2
2012	208.2	30,382.9	10,876.2	29	49.4
2013	190.1	30,850.2	11,044.4	30	46.1
2014	204.2	31,783.0	11,388.9	30	49.8
2015	123.4	32,335.7	11,037.8	46	30.2
2016	90.8	33,156.3	10,889.6	58	22.5
2017	112.6	34,754.5	11,439.0	48	28.0
2018	122.3	36,566.1	11,907.1	46	30.6
2019	124.2	38,255.2	12,336.7	48	31.3
2020	92.4	39,333.9	12,219.3	61	24.4
2021	97.0	40,812.0	12,601.5	59	26.4

County: county value. Kansas: state value. County Rank: highest county value ranked #1. (\$000): thousands of dollars. Nonmetro Kansas: Kansas total less Metropolitan Areas as defined by the Office of Management and Budget (OMB; released 3/6/2020). Per 1000: For nonmoney amounts, Per 1000=(county value / county population for the same year as the data) x 1000. \$ Per capita=(county value / county population for the same year as the data). Value= . indicates missing or suppressed data or value not calculated.

Government

SALES TAX COLLECTIONS (\$)

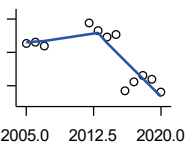


Kansas Department of Revenue. Use tax collections included beginning in calendar year 2018.

Year	County	State of Kansas	Non Metro Kansas	County Rank	Per 1000 or \$ Per Capita
2000	1,011,119	1,475,831,808	432,761,608	82	234,761.8
2001	1,098,965	1,481,026,688	426,316,284	77	258,823.6
2002	1,165,933	1,561,316,864	443,986,950	78	278,000.2
2003	1,311,711	1,626,782,976	461,658,700	74	311,274.6
2004	1,433,834	1,691,899,008	480,309,725	74	338,328.0
2005	1,680,266	1,744,980,352	497,494,867	70	395,356.7
2006	2,051,425	1,851,694,720	532,233,047	67	490,536.8
2007	2,505,944	1,917,546,752	559,319,583	64	598,935.0
2008	2,784,659	1,990,655,744	589,725,773	62	670,517.3
2009	2,253,110	1,866,223,078	548,627,132	67	537,991.9
2010	2,592,138	2,075,193,413	617,409,982	67	609,055.0
2011	3,293,748	2,347,193,367	702,671,534	65	777,744.5
2012	3,162,774	2,456,292,294	740,196,106	66	750,361.6
2013	3,256,289	2,489,204,048	746,226,565	67	789,212.1
2014	3,187,612	2,539,886,774	760,474,019	67	777,276.8
2015	3,104,591	2,642,374,740	750,090,163	66	759,254.2
2016	3,011,031	2,732,611,350	749,030,133	67	747,896.3
2017	3,112,240	2,726,104,521	744,246,491	65	774,381.8
2018	3,484,960	3,277,299,125	893,564,480	70	873,423.7
2019	3,623,409	3,395,631,405	939,607,762	70	913,157.5
2020	3,798,335	3,489,306,791	984,218,931	70	1,004,850.5
2021	4,464,222	3,981,293,227	1,098,391,422	70	1,217,072.5

Crime

CRIME INDEX OFFENSES



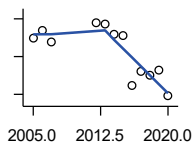
Kansas Bureau of Investigation, Note: Data are aggregated from reports by individual police departments and subject to be incomplete.

Year	County	State of Kansas	Non Metro Kansas	County Rank	Per 1000 or \$ Per Capita
2005	55	111,856	31,630	72	12.9
2006	56	110,032	.	65	13.4
2007	54	111,035	29,921	73	12.9
2012	68	98,914	26,963	68	16.1
2013	63	93,054	24,488	69	15.3
2014	59	86,323	23,341	72	14.4
2015	61	88,590	21,580	65	14.9
2016	27	90,589	21,565	82	6.7
2017	32	93,091	22,622	81	8.0
2018	36	92,062	20,325	74	9.0
2019	34	87,008	18,547	71	8.6
2020	26	87,346	17,762	81	6.9

County: county value. Kansas: state value. County Rank: highest county value ranked #1. (\$000): thousands of dollars. Nonmetro Kansas: Kansas total less Metropolitan Areas as defined by the Office of Management and Budget (OMB; released 3/6/2020). Per 1000: For nonmoney amounts, Per 1000=(county value / county population for the same year as the data) x 1000. \$ Per capita=(county value / county population for the same year as the data). Value= . indicates missing or suppressed data or value not calculated.

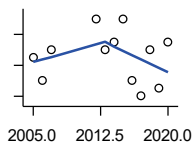
Crime

PROPERTY CRIMES



Kansas Bureau of Investigation, Note: Data are aggregated from reports by individual police departments and subject to be incomplete.

Year	County	State of Kansas	Non Metro Kansas	County Rank	Per 1000 or \$ Per Capita
2005	50	101,414	29,042	72	11.8
2006	54	99,110	.	64	12.9
2007	48	99,632	26,856	70	11.5
2012	58	88,707	24,220	69	13.8
2013	57	83,551	22,028	69	13.8
2014	52	76,794	20,858	73	12.7
2015	51	77,997	19,138	66	12.5
2016	25	79,549	19,207	80	6.2
2017	32	81,349	19,981	76	8.0
2018	30	79,695	17,769	74	7.5
2019	33	74,314	15,892	68	8.3
2020	19	73,450	15,100	83	5.0



VIOLENT CRIMES

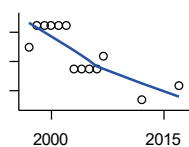
Kansas Bureau of Investigation, Note: Data are aggregated from reports by individual police departments and subject to be incomplete.

Year	County	State of Kansas	Non Metro Kansas	County Rank	Per 1000 or \$ Per Capita
2005	5	10,442	2,588	76	1.2
2006	2	10,922	.	90	0.5
2007	6	11,403	3,065	71	1.4
2012	10	10,207	2,743	62	2.4
2013	6	9,503	2,460	75	1.5
2014	7	9,529	2,483	70	1.7
2015	10	10,593	2,442	62	2.4
2016	2	11,040	2,358	89	0.5
2017	0	11,742	2,641	104	0.0
2018	6	12,367	2,556	68	1.5
2019	1	12,694	2,655	101	0.3
2020	7	13,896	2,662	75	1.9

County: county value. Kansas: state value. County Rank: highest county value ranked #1. (\$000): thousands of dollars. Nonmetro Kansas: Kansas total less Metropolitan Areas as defined by the Office of Management and Budget (OMB; released 3/6/2020). Per 1000: For nonmoney amounts, Per 1000=(county value / county population for the same year as the data) x 1000. \$ Per capita=(county value / county population for the same year as the data). Value= . indicates missing or suppressed data or value not calculated.

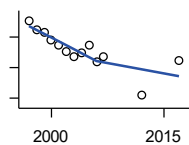
Agriculture

NUMBER OF FARMS



Kansas Agricultural Statistics, Kansas Farm Facts

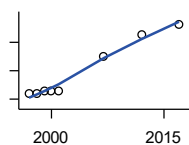
Year	County	State of Kansas	Non Metro Kansas	County Rank	Per 1000 or \$ Per Capita
1997	260	64,000	47,900	99	62.1
1998	290	65,000	48,850	94	69.8
1999	290	65,000	48,850	94	68.1
2000	290	64,000	48,030	93	67.3
2001	290	63,000	47,200	91	68.3
2002	290	63,000	47,200	91	69.1
2003	230	64,500	48,150	104	54.6
2004	230	64,500	48,150	104	54.3
2005	230	64,500	48,150	104	54.1
2006	230	64,000	47,650	104	55.0
2007	248	65,531	48,179	103	59.3
2012	187	61,773	45,655	104	44.4
2017	207	58,569	42,404	103	51.5



TOTAL ACRES HARVESTED

Kansas Agricultural Statistics, Kansas Farm Facts

Year	County	State of Kansas	Non Metro Kansas	County Rank	Per 1000 or \$ Per Capita
1997	301,700	22,846,000	19,430,580	18	72,039.2
1998	286,500	22,143,500	18,943,650	19	68,953.1
1999	282,980	21,708,900	18,581,750	21	66,474.0
2000	270,500	21,639,000	18,528,870	27	62,804.7
2001	260,800	21,847,900	18,689,750	27	61,422.5
2002	251,700	20,230,400	17,089,120	25	60,014.3
2003	243,100	21,827,700	18,661,920	33	57,688.7
2004	249,470	20,876,900	17,721,500	30	58,865.0
2005	262,100	21,936,500	18,807,930	28	61,670.6
2006	234,900	21,412,700	18,291,120	36	56,169.3
2007	242,130	19,886,655	17,164,743	27	57,870.5
2012	179,810	21,043,596	17,966,843	59	42,659.5
2017	236,018	21,837,465	18,543,057	34	58,725.6



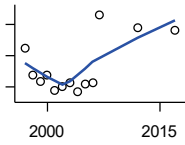
VALUE: LIVESTOCK AND POULTRY (\$000)

Kansas Agricultural Statistics, Kansas Farm Facts

Year	County	State of Kansas	Non Metro Kansas	County Rank	Per 1000 or \$ Per Capita
1997	80,318	2,806,445	2,500,305	6	19,178.1
1998	86,672	2,670,432	2,378,007	4	20,859.7
1999	109,965	2,849,061	2,554,528	3	25,831.6
2000	108,028	2,901,469	2,609,032	3	25,082.0
2001	122,500	2,693,274	2,437,187	2	28,850.7
2007	602,139	9,525,971	.	2	143,914.7
2012	902,380	11,476,571	10,883,216	2	214,087.8
2017	1,052,929	12,322,289	.	1	261,987.8

County: county value. Kansas: state value. County Rank: highest county value ranked #1. (\$000): thousands of dollars. Nonmetro Kansas: Kansas total less Metropolitan Areas as defined by the Office of Management and Budget (OMB; released 3/6/2020). Per 1000: For nonmoney amounts, Per 1000=(county value / county population for the same year as the data) x 1000. \$ Per capita=(county value / county population for the same year as the data). Value= . indicates missing or suppressed data or value not calculated.

Agriculture



VALUE:FIELD CROPS (\$000)
EXCLUDING GOVERNMENT
PROGRAM PAYMENTS

Kansas Agricultural Statistics, Kansas
Farm Facts

Year	County	State of Kansas	Non Metro Kansas	County Rank	Per 1000 or \$ Per Capita
1997	94,509	4,474,942	3,800,365	5	22,566.6
1998	77,565	3,594,319	3,124,409	3	18,667.9
1999	73,483	3,118,193	2,728,319	3	17,261.7
2000	77,635	2,915,660	2,540,052	3	18,025.3
2001	68,030	3,283,117	2,857,136	3	16,022.1
2002	70,569	3,011,855	2,560,580	3	16,826.2
2003	72,644	3,623,255	3,150,629	5	17,238.7
2004	66,603	3,445,688	2,896,603	6	15,715.7
2005	71,802	3,678,123	3,182,677	5	16,894.6
2006	72,600	4,308,716	3,684,132	12	17,360.1
2007	116,154	4,887,212	.	4	27,761.5
2012	107,497	6,983,993	6,044,551	19	25,503.4
2017	106,168	6,460,437	.	9	26,416.5

County: county value. Kansas: state value. County Rank: highest county value ranked #1. (\$000): thousands of dollars. Nonmetro Kansas: Kansas total less Metropolitan Areas as defined by the Office of Management and Budget (OMB; released 3/6/2020). Per 1000: For nonmoney amounts, Per 1000=(county value / county population for the same year as the data) x 1000. \$ Per capita=(county value / county population for the same year as the data). Value= . indicates missing or suppressed data or value not calculated.