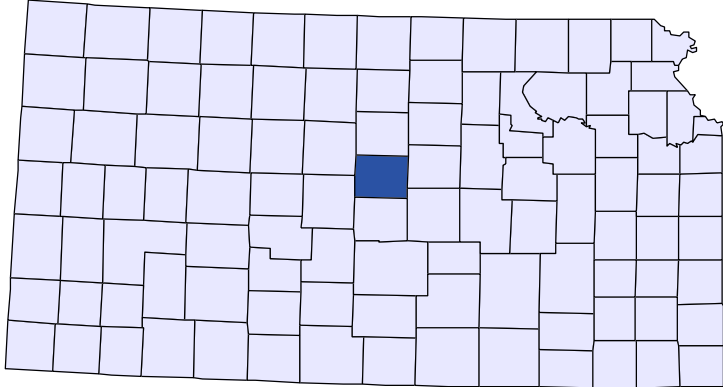




Kansas County Profiles

Ellsworth County



The University
of Kansas

Institute for Policy
& Social Research

KU INSTITUTE FOR POLICY
& SOCIAL RESEARCH

The University of Kansas

1541 Lilac Lane, Rm. 607
Blake Hall
Lawrence, KS 66045-3129

Foreword

The Kansas County Profile Report is published by the Institute for Policy & Social Research (IPSR) at the University of Kansas with support from the KU University Center project.* Special thanks to Xanthippe Wedel, senior research data engineer, who compiles and updates the county profiles and Genna Hurd, associate researcher, who provides editorial review.

County reports can be generated for any county in Kansas by simply clicking on the county from the web site:

<https://ipsr.ku.edu/ksdata/kcced/profiles/>

The Kansas County Profile Report contains 12 categories of information: Population, Vital Statistics and Health, Housing, Education, Social Environment, Business, Employment, Income, Banking, Government, Crime, and Agriculture. For more information about Kansas, please refer to the Kansas Statistical Abstract, available online at:

<https://ipsr.ku.edu/ksdata/ksah/>

We are always looking for ways to improve the Kansas County Profile Report and we welcome your suggestions and comments. Please address any correspondence to the Institute for Policy & Social Research, The University of Kansas, 607 Blake Hall, 1541 Lilac Lane, Lawrence, Kansas 66045-3129, e-mail ipsr@ku.edu or call 785-864-3701.

**The KU University Center is a collaborative effort led by the Institute for Policy & Social Research at the University of Kansas. This project is supported by the Economic Development Administration, U.S. Department of Commerce, through its University Center Program.*

The mission of EDA is to lead the federal economic development agenda by promoting innovation and competitiveness, preparing American regions for growth and success in the worldwide economy.

Kansas County Profiles Table of Contents

Population

Total Population (Decennial Census)	1
Estimated Population (Current Population Reports)	2
Urban Population	2
Rural Population	3
Net Migration (Decade Ending...)	3
Median Age	3

Population (Age Groups)

Population Under 18 (Decennial Census)	3
Population Age 18 and Over (Decennial Census)	4
Population Age 65 and Over (Decennial Census)	4
Population Age 85 and Over (Decennial Census)	4

Vital Statistics and Health

Live Births	5
Deaths	5
Marriages	6
Divorces and Annulments	6
Physicians: M.D. Physicians	7
Physicians: D.O. Physicians	7
Dentists	8
Number of Hospitals	8
Number of Hospital Beds	9

Housing

Housing Units (Decennial Census)	9
Housing Units (Estimated)	10
Occupied Housing Units	10
Owner Occupied Housing Units	10
Renter Occupied Housing Units	11
Vacant Housing Units	11
Median Value (\$): Owner Occupied Housing Units	11
Median Contract Rent (\$)	12
Fair Market Rent: 2 Bedrooms	12

Education

Population Age 25 and Over	13
Percent of Population 25+ with High School or Higher Education	13
Percent of Population 25+ with Bachelors Degree or Higher Education	14
Public School Enrollment (FTE- School Year Beginning...)	14
Pupil/Teacher Ratio (School Year Beginning...)	15

Kansas County Profiles Table of Contents

Social Environment

Total Child Care Facilities	15
Preschools	16
Food Stamp Beneficiaries	16
Percent of Population Receiving Food Stamps	17
Estimated Number of People in Poverty	17
Estimated Percent of People in Poverty	18
Estimated Number of Related Children Age 5 to 17 in Families in Poverty	18
Estimated Percent of Related Children Age 5 to 17 in Families in Poverty	19
Estimated Number Under 18 in Poverty	19
Estimated Percent Under 18 in Poverty	20

Business

Establishments: Total	21
Establishments: 1-19 Employees	22
Establishments: 20-99 Employees	22
Establishments: 100-499 Employees	23
Establishments: 500 or More Employees	23
Establishments: Forestry, Fishing, Hunting, and Ag Support	24
Establishments: Mining	24
Establishments: Utilities	25
Establishments: Construction	25
Establishments: Manufacturing	26
Establishments: Wholesale Trade	26
Establishments: Retail Trade	27
Establishments: Transportation and Warehousing	27
Establishments: Information	28
Establishments: Finance and Insurance	28
Establishments: Real Estate, Rental, and Leasing	29
Establishments: Professional, Scientific, and Technical Services	29
Establishments: Management of Companies and Enterprises	30
Establishments: Admin, Support, Waste Management, and Remediation	30
Establishments: Educational Services	31
Establishments: Health Care and Social Assistance	31
Establishments: Arts, Entertainment, and Recreation	32
Establishments: Accommodation and Food Services	32
Establishments: Other Services	33

Kansas County Profiles Table of Contents

Business	
Total Annual Payroll (\$000)	34
Total Annual Payroll (\$000): Forestry, Fishing, Hunting, and Ag Support	35
Total Annual Payroll (\$000): Mining	35
Total Annual Payroll (\$000): Utilities	36
Total Annual Payroll (\$000): Construction	36
Total Annual Payroll (\$000): Manufacturing	37
Total Annual Payroll (\$000): Wholesale Trade	37
Total Annual Payroll (\$000): Retail Trade	38
Total Annual Payroll (\$000): Transportation and Warehousing	38
Total Annual Payroll (\$000): Information	39
Total Annual Payroll (\$000): Finance and Insurance	39
Total Annual Payroll (\$000): Real Estate, Rental, and Leasing	40
Total Annual Payroll (\$000): Professional, Scientific, and Technical Services	40
Total Annual Payroll (\$000): Management of Companies and Enterprises	41
Total Annual Payroll (\$000): Admin, Support, Waste Management, and Remediation	41
Total Annual Payroll (\$000): Educational Services	42
Total Annual Payroll (\$000): Health Care and Social Assistance	42
Total Annual Payroll (\$000): Arts, Entertainment, and Recreation	43
Total Annual Payroll (\$000): Accommodation and Food Services	43
Total Annual Payroll (\$000): Other Services	44
Nominal Taxable Retail Sales (Million\$)	44
Retail Pull Factor	45
Employment	
Civilian Labor Force (BLS - Place of Residence)	46
Employed (BLS - Place of Residence)	47
Unemployed (BLS - Place of Residence)	48
Unemployment Rate (BLS - Place of Residence)	49
BEA Employment: Total (Place of Work)	49
BEA Employment: Farm	50
BEA Employment: Non-Farm	50
Average Wage per Job (\$)	51
BEA Employment: Forestry, Fishing, Hunting, and Ag Support	51
BEA Employment: Mining	52
BEA Employment: Utilities	52
BEA Employment: Construction	53
BEA Employment: Manufacturing	53
BEA Employment: Wholesale Trade	54
BEA Employment: Retail Trade	54
BEA Employment: Transportation and Warehousing	55
BEA Employment: Information	55
BEA Employment: Finance and Insurance	56
BEA Employment: Real Estate, Rental, and Leasing	56
BEA Employment: Professional and Technical Services	57
BEA Employment: Management of Companies and Enterprises	57
BEA Employment: Administrative and Waste Services	58
BEA Employment: Educational Services	58
BEA Employment: Health Care and Social Assistance	59
BEA Employment: Arts, Entertainment, and Recreation	59
BEA Employment: Government and Government Enterprises	60
BEA Employment: Accommodation and Food Services	60
BEA Employment: Other Services, Except Public Administration	61

Kansas County Profiles Table of Contents

Income

BEA Per Capita Personal Income (\$)	61
Sources of Personal Income: Total Personal Income (\$000)	62
Sources of Personal Income: Wages And Salaries (\$000)	62
Sources of Personal Income: Proprietors-Farm (\$000)	63
Sources of Personal Income: Proprietors-Nonfarm (\$000)	63
Sources of Personal Income: Dividends, Interest, Rent (\$000)	64
Sources of Personal Income: Transfer Payments (\$000)	64
Sources of Personal Income: Less Social Insurance (\$000)	65
HUD Median Family Income	65
HUD 30% Low-To-Medium Income (LMI) Limit - 4 Persons	66
HUD 50% Low-To-Medium Income (LMI) Limit - 4 Persons	66
HUD 80% Low-To-Medium Income (LMI) Limit - 4 Persons	66

Banking

Bank Deposits (\$000)	67
Number of Banks	67
Number of Banking Offices	68

Government

Tangible Assessed Valuation (million\$)	68
Sales Tax Collections	69

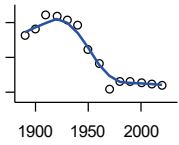
Crime

Crime Index Offenses	69
Property Crimes	70
Violent Crimes	70

Agriculture

Number of Farms	71
Total Acres Harvested	71
Value: Livestock and Poultry (\$000)	71
Value: Field Crops (\$000) Excluding Government Program Payments	72

Population



DECENNIAL CENSUS:TOTAL POPULATION

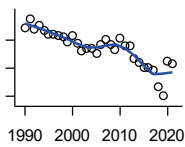
U.S. Census Bureau: Decennial Census

Year	County	State of Kansas	Non Metro Kansas	County Rank	Per 1000 or \$ Per Capita
1890	9,272	1,427,096	968,413	62	.
1900	9,626	1,470,495	981,206	64	.
1910	10,444	1,690,949	1,138,294	66	.
1920	10,379	1,769,257	1,153,525	65	.
1930	10,132	1,880,999	1,180,056	67	.
1940	9,855	1,801,028	1,097,216	62	.
1950	8,465	1,905,299	1,046,823	67	.
1960	7,677	2,178,611	1,021,510	63	.
1970	6,146	2,246,578	958,104	69	.
1980	6,640	2,363,679	980,085	65	.
1990	6,586	2,477,574	939,416	62	.
2000	6,525	2,688,418	959,507	60	.
2010	6,497	2,853,118	929,981	57	.
2020	6,376	2,937,880	892,006	55	.

County: county value. Kansas: state value. County Rank: highest county value ranked #1. (\$000): thousands of dollars. Nonmetro Kansas: Kansas total less Metropolitan Areas as defined by the Office of Management and Budget (OMB; released 3/6/2020). Per 1000: For nonmoney amounts, Per 1000=(county value / county population for the same year as the data) x 1000. \$ Per capita=(county value / county population for the same year as the data). Value= . indicates missing or suppressed data or value not calculated.

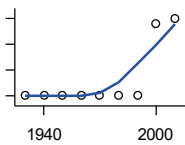
Population

ESTIMATED POPULATION



U.S. Census Bureau

Year	County	State of Kansas	Non Metro Kansas	County Rank	Per 1000 or \$ Per Capita
1990	6,584	2,481,349	938,607	60	.
1991	6,652	2,498,722	938,965	60	.
1992	6,580	2,532,394	942,759	60	.
1993	6,606	2,556,547	947,515	61	.
1994	6,573	2,580,513	952,178	61	.
1995	6,546	2,601,007	957,771	61	.
1996	6,544	2,614,554	959,455	61	.
1997	6,537	2,635,292	960,225	61	.
1998	6,525	2,660,598	960,569	61	.
1999	6,487	2,678,338	960,704	61	.
2000	6,536	2,693,681	959,230	59	.
2001	6,477	2,702,162	952,607	59	.
2002	6,419	2,713,535	945,985	58	.
2003	6,440	2,723,004	941,474	58	.
2004	6,437	2,734,373	937,623	58	.
2005	6,404	2,745,299	932,852	58	.
2006	6,465	2,762,931	928,809	57	.
2007	6,503	2,783,785	927,643	57	.
2008	6,471	2,808,076	926,248	57	.
2009	6,432	2,832,704	926,755	57	.
2010	6,516	2,858,190	930,028	57	.
2011	6,461	2,869,225	927,675	57	.
2012	6,462	2,885,257	925,152	56	.
2013	6,365	2,893,212	922,383	56	.
2014	6,345	2,900,475	917,854	56	.
2015	6,302	2,909,011	912,199	56	.
2016	6,302	2,910,844	905,099	56	.
2017	6,284	2,908,718	897,981	56	.
2018	6,163	2,911,359	892,656	56	.
2019	6,102	2,913,314	887,455	56	.
2020	6,354	2,935,880	889,750	55	.
2021	6,336	2,934,582	886,438	55	.



URBAN POPULATION

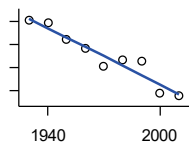
U.S. Census Bureau: Decennial Census

Year	County	State of Kansas	Non Metro Kansas	County Rank	Per 1000 or \$ Per Capita
1930	0	729,834	336,666	105	.
1940	0	753,941	349,228	105	.
1950	0	993,220	398,923	105	.
1960	0	1,328,741	457,447	105	.
1970	0	1,484,870	450,543	105	.
1980	0	1,575,899	474,769	105	.
1990	0	1,712,564	464,205	105	.
2000	2,792	1,920,081	488,011	54	.
2010	2,982	2,116,961	485,780	49	.

County: county value. Kansas: state value. County Rank: highest county value ranked #1. (\$000): thousands of dollars. Nonmetro Kansas: Kansas total less Metropolitan Areas as defined by the Office of Management and Budget (OMB; released 3/6/2020). Per 1000: For nonmoney amounts, Per 1000=(county value / county population for the same year as the data) x 1000. \$ Per capita=(county value / county population for the same year as the data). Value= . indicates missing or suppressed data or value not calculated.

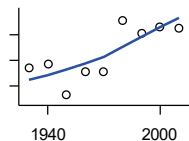
Population

RURAL POPULATION



U.S. Census Bureau

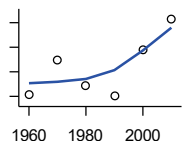
Year	County	State of Kansas	Non Metro Kansas	County Rank	Per 1000 or \$ Per Capita
1930	10,132	1,151,165	843,390	56	.
1940	9,855	1,047,087	747,988	47	.
1950	8,465	912,079	647,900	48	.
1960	7,677	849,870	564,063	42	.
1970	6,146	761,708	509,972	49	.
1980	6,640	787,780	505,873	43	.
1990	6,586	765,010	475,211	42	.
2000	3,733	768,337	471,900	68	.
2010	3,515	736,157	444,201	66	.



NET MIGRATION: DECADE ENDING...

calculated by the Institute for Policy and Social Research, The University of Kansas

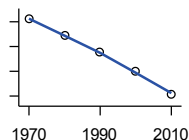
Year	County	State of Kansas	Non Metro Kansas	County Rank	Per 1000 or \$ Per Capita
1930	-1,307	-66,132	-101,869	63	-129.0
1940	-1,135	-192,649	-166,022	27	-115.2
1950	-2,363	-84,329	-158,379	72	-279.1
1960	-1,468	-38,999	-146,640	51	-191.2
1970	-1,439	-119,662	-105,116	78	-234.1
1980	574	-21,983	-6,184	25	86.4
1990	49	-61,835	-79,274	11	7.4
2000	305	68,960	4,247	33	46.7
2010	279	5,578	-50,648	13	42.9



MEDIAN AGE

U.S. Census Bureau: Decennial Census

Year	County	State of Kansas	Non Metro Kansas	County Rank	Per 1000 or \$ Per Capita
1960	38.1	26.9	.	16	.
1970	41.0	28.7	.	18	.
1980	38.9	30.1	.	21	.
1990	38.0	32.9	.	40	.
2000	41.8	35.2	.	27	.
2010	44.3	36.0	.	39	.



POPULATION UNDER 18 (DECENNIAL CENSUS)

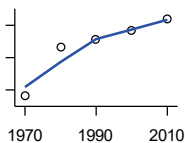
U.S. Census Bureau: Decennial Census

Year	County	State of Kansas	Non Metro Kansas	County Rank	Per 1000 or \$ Per Capita
1970	1,824	746,354	306,227	71	.
1980	1,686	649,035	263,919	65	.
1990	1,559	661,614	250,107	65	.
2000	1,396	712,993	250,757	69	.
2010	1,217	726,939	229,213	70	.

County: county value. Kansas: state value. County Rank: highest county value ranked #1. (\$000): thousands of dollars. Nonmetro Kansas: Kansas total less Metropolitan Areas as defined by the Office of Management and Budget (OMB; released 3/6/2020). Per 1000: For nonmoney amounts, Per 1000=(county value / county population for the same year as the data) x 1000. \$ Per capita=(county value / county population for the same year as the data). Value= . indicates missing or suppressed data or value not calculated.

Population

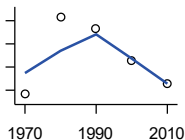
**POPULATION AGE 18 AND OVER
(DECENNIAL CENSUS)**



U.S. Census Bureau: Decennial Census

Year	County	State of Kansas	Non Metro Kansas	County Rank	Per 1000 or \$ Per Capita
1970	4,322	1,500,224	654,288	69	.
1980	4,935	1,714,282	716,684	63	.
1990	5,027	1,815,960	689,309	59	.
2000	5,129	1,975,425	709,154	57	.
2010	5,280	2,126,179	700,768	55	.

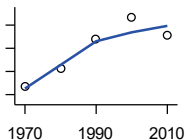
**POPULATION AGE 65 AND OVER
(DECENNIAL CENSUS)**



U.S. Census Bureau: Decennial Census

Year	County	State of Kansas	Non Metro Kansas	County Rank	Per 1000 or \$ Per Capita
1970	1,182	266,201	149,049	68	.
1980	1,516	306,263	164,932	57	.
1990	1,466	342,571	168,579	58	.
2000	1,329	356,229	161,769	58	.
2010	1,228	376,116	154,214	58	.

**POPULATION AGE 85 AND OVER
(DECENNIAL CENSUS)**



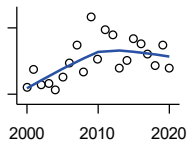
U.S. Census Bureau: Decennial Census

Year	County	State of Kansas	Non Metro Kansas	County Rank	Per 1000 or \$ Per Capita
1970	117	23,899	13,698	65	.
1980	156	33,455	18,804	64	.
1990	220	42,241	22,970	56	.
2000	267	51,770	26,644	54	.
2010	228	59,318	26,197	54	.

County: county value. Kansas: state value. County Rank: highest county value ranked #1. (\$000): thousands of dollars. Nonmetro Kansas: Kansas total less Metropolitan Areas as defined by the Office of Management and Budget (OMB; released 3/6/2020). Per 1000: For nonmoney amounts, Per 1000=(county value / county population for the same year as the data) x 1000. \$ Per capita=(county value / county population for the same year as the data). Value= . indicates missing or suppressed data or value not calculated.

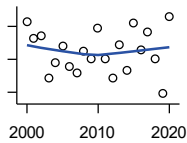
Vital Statistics and Health

BIRTHS (LIVE)



Kansas Department of Health and Environment

Year	County	State of Kansas	Non Metro Kansas	County Rank	Per 1000 or \$ Per Capita
2000	43	39,654	12,980	80	6.6
2001	51	38,832	12,527	72	7.9
2002	44	39,338	12,476	76	6.9
2003	45	39,353	12,342	72	7.0
2004	42	39,553	12,398	80	6.5
2005	48	39,701	12,382	75	7.5
2006	54	40,896	12,726	69	8.4
2007	62	41,951	12,990	66	9.5
2008	50	41,815	12,970	73	7.7
2009	75	41,388	12,949	60	11.7
2010	56	40,439	12,200	70	8.6
2011	69	39,628	12,098	62	10.7
2012	67	40,304	12,217	64	10.4
2013	52	38,805	11,877	72	8.2
2014	55	39,193	12,052	71	8.7
2015	65	39,126	11,836	64	10.3
2016	63	38,048	11,467	68	10.0
2017	58	36,464	10,968	65	9.2
2018	53	36,268	10,826	72	8.6
2019	62	35,395	10,506	63	10.2
2020	52	34,368	10,222	69	8.2



DEATHS

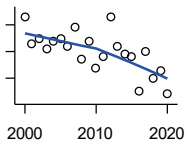
Kansas Department of Health and Environment

Year	County	State of Kansas	Non Metro Kansas	County Rank	Per 1000 or \$ Per Capita
2000	103	24,676	11,175	54	15.8
2001	93	24,590	10,807	55	14.4
2002	94	24,968	11,079	56	14.6
2003	69	24,417	10,615	64	10.7
2004	78	23,720	10,369	59	12.1
2005	88	24,632	10,599	56	13.7
2006	76	24,489	10,538	58	11.8
2007	72	24,413	10,601	64	11.1
2008	85	24,896	10,593	55	13.1
2009	80	23,997	9,938	58	12.4
2010	99	24,428	10,105	51	15.2
2011	80	25,114	10,520	57	12.4
2012	69	25,084	10,259	61	10.7
2013	89	25,347	10,249	52	14.0
2014	73	25,731	10,275	61	11.5
2015	102	26,611	10,539	49	16.2
2016	86	26,129	10,231	51	13.6
2017	97	26,725	10,452	49	15.4
2018	80	27,213	10,389	57	13.0
2019	59	27,312	10,569	70	9.7
2020	106	31,667	11,850	49	16.6

County: county value. Kansas: state value. County Rank: highest county value ranked #1. (\$000): thousands of dollars. Nonmetro Kansas: Kansas total less Metropolitan Areas as defined by the Office of Management and Budget (OMB; released 3/6/2020). Per 1000: For nonmoney amounts, Per 1000=(county value / county population for the same year as the data) x 1000. \$ Per capita=(county value / county population for the same year as the data). Value= . indicates missing or suppressed data or value not calculated.

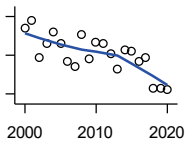
Vital Statistics and Health

MARRIAGES



Kansas Department of Health and Environment

Year	County	State of Kansas	Non Metro Kansas	County Rank	Per 1000 or \$ Per Capita
2000	53	20,426	7,333	58	8.1
2001	43	20,457	7,441	66	6.6
2002	45	19,783	6,794	59	7.0
2003	41	18,722	6,469	59	6.4
2004	44	19,174	6,756	60	6.8
2005	45	18,745	6,481	56	7.0
2006	42	18,836	6,433	54	6.5
2007	49	18,910	6,464	53	7.5
2008	37	18,717	6,283	62	5.7
2009	44	18,268	6,015	54	6.8
2010	34	18,150	5,925	65	5.2
2011	38	17,897	5,977	62	5.9
2012	53	18,154	5,752	48	8.2
2013	42	17,328	5,533	53	6.6
2014	39	17,655	5,535	57	6.1
2015	38	17,595	5,400	54	6.0
2016	25	17,948	5,340	70	4.0
2017	40	17,274	5,163	53	6.4
2018	30	16,362	4,999	61	4.9
2019	33	15,403	4,650	55	5.4
2020	24	14,038	4,066	63	3.8



DIVORCES AND ANNULMENTS

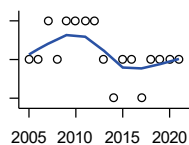
Kansas Department of Health and Environment

Year	County	State of Kansas	Non Metro Kansas	County Rank	Per 1000 or \$ Per Capita
2000	54	10,105	4,000	34	8.3
2001	58	9,885	3,818	31	9.0
2002	39	9,645	3,716	41	6.1
2003	46	8,644	3,464	32	7.1
2004	52	8,759	3,506	32	8.1
2005	46	8,476	3,311	35	7.2
2006	37	9,145	3,387	42	5.7
2007	34	9,347	3,402	38	5.2
2008	51	9,818	3,655	35	7.9
2009	38	10,333	3,463	40	5.9
2010	47	10,579	3,530	35	7.2
2011	46	10,445	3,347	37	7.1
2012	41	9,782	3,040	35	6.3
2013	33	9,085	2,973	39	5.2
2014	43	8,441	2,682	32	6.8
2015	42	8,036	2,704	33	6.7
2016	37	7,198	2,424	34	5.9
2017	39	6,494	2,315	35	6.2
2018	23	6,538	2,269	42	3.7
2019	23	6,398	2,357	42	3.8
2020	22	5,169	1,866	42	3.5

County: county value. Kansas: state value. County Rank: highest county value ranked #1. (\$000): thousands of dollars. Nonmetro Kansas: Kansas total less Metropolitan Areas as defined by the Office of Management and Budget (OMB; released 3/6/2020). Per 1000: For nonmoney amounts, Per 1000=(county value / county population for the same year as the data) x 1000. \$ Per capita=(county value / county population for the same year as the data). Value= . indicates missing or suppressed data or value not calculated.

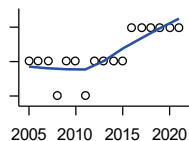
Vital Statistics and Health

PHYSICIANS: M.D. PHYSICIANS



Kansas Department of Health and Environment (1981-2005,2010-);Kansas Health Policy Authority (2006-2009)

Year	County	State of Kansas	Non Metro Kansas	County Rank	Per 1000 or \$ Per Capita
2005	2	4,241	912	81	0.3
2006	2	4,310	953	86	0.3
2007	3	5,309	1,046	74	0.5
2008	2	5,110	1,016	85	0.3
2009	3	5,249	996	70	0.5
2010	3	5,192	979	73	0.5
2011	3	5,243	983	73	0.5
2012	3	5,693	1,033	72	0.5
2013	2	6,106	1,071	83	0.3
2014	1	5,839	951	97	0.2
2015	2	5,703	855	77	0.3
2016	2	4,278	643	72	0.3
2017	1	6,332	1,047	99	0.2
2018	2	6,079	1,065	87	0.3
2019	2	6,435	1,036	86	0.3
2020	2	6,668	1,045	87	0.3
2021	2	6,745	1,042	87	0.3



PHYSICIANS: D.O. PHYSICIANS

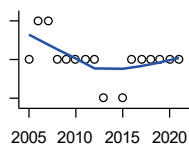
Kansas Department of Health and Environment (1981-2005,2010-);Kansas Health Policy Authority (2006-2009)

Year	County	State of Kansas	Non Metro Kansas	County Rank	Per 1000 or \$ Per Capita
2005	1	553	174	68	0.2
2006	1	508	171	66	0.2
2007	1	569	169	66	0.2
2008	0	558	166	105	0.0
2009	1	564	160	66	0.2
2010	1	583	169	66	0.2
2011	0	502	152	105	0.0
2012	1	718	200	67	0.2
2013	1	829	210	65	0.2
2014	1	817	189	62	0.2
2015	1	819	190	63	0.2
2016	2	632	136	34	0.3
2017	2	579	129	33	0.3
2018	2	871	164	40	0.3
2019	2	951	212	42	0.3
2020	2	1,018	204	42	0.3
2021	2	1,095	217	47	0.3

County: county value. Kansas: state value. County Rank: highest county value ranked #1. (\$000): thousands of dollars. Nonmetro Kansas: Kansas total less Metropolitan Areas as defined by the Office of Management and Budget (OMB; released 3/6/2020). Per 1000: For nonmoney amounts, Per 1000=(county value / county population for the same year as the data) x 1000. \$ Per capita=(county value / county population for the same year as the data). Value= . indicates missing or suppressed data or value not calculated.

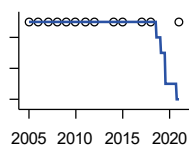
Vital Statistics and Health

DENTISTS



Kansas Department of Health and Environment (1981-2006,2010-); Kansas Health Policy Authority (2007-2009)

Year	County	State of Kansas	Non Metro Kansas	County Rank	Per 1000 or \$ Per Capita
2005	3	1,347	363	48	0.5
2006	4	1,381	361	43	0.6
2007	4	1,335	350	42	0.6
2008	3	1,392	353	46	0.5
2009	3	1,353	350	46	0.5
2010	3	1,401	365	53	0.5
2011	3	1,338	346	50	0.5
2012	3	1,434	392	53	0.5
2013	2	1,212	328	68	0.3
2015	2	1,240	327	69	0.3
2016	3	1,456	350	52	0.5
2017	3	1,467	350	48	0.5
2018	3	1,604	359	47	0.5
2019	3	1,646	355	48	0.5
2020	3	1,646	355	48	0.5
2021	3	1,688	362	49	0.5



NUMBER OF HOSPITALS

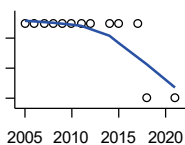
American Hospital Association, American Hospital Association Guide to the Health Care Field

Year	County	State of Kansas	Non Metro Kansas	County Rank	Per 1000 or \$ Per Capita
2005	1	158	105	96	.
2006	1	158	105	96	.
2007	1	159	104	95	.
2008	1	159	104	95	.
2009	1	158	105	96	.
2010	1	158	104	96	.
2011	1	158	103	96	.
2012	1	157	103	96	.
2014	1	156	.	96	.
2015	1	155	103	96	.
2017	1	157	102	96	.
2018	1	154	99	95	.
2021	1	151	.	95	.

County: county value. Kansas: state value. County Rank: highest county value ranked #1. (\$000): thousands of dollars. Nonmetro Kansas: Kansas total less Metropolitan Areas as defined by the Office of Management and Budget (OMB; released 3/6/2020). Per 1000: For nonmoney amounts, Per 1000=(county value / county population for the same year as the data) x 1000. \$ Per capita=(county value / county population for the same year as the data). Value= . indicates missing or suppressed data or value not calculated.

Vital Statistics and Health

NUMBER OF HOSPITAL BEDS

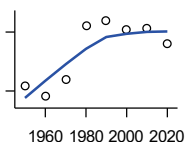


Kansas Department of Health and Environment

Year	County	State of Kansas	Non Metro Kansas	County Rank	Per 1000 or \$ Per Capita
2005	20	12,389	5,687	88	3.1
2006	20	11,992	5,514	88	3.1
2007	20	12,171	5,637	88	3.1
2008	20	12,332	5,700	89	3.1
2009	20	12,283	5,652	90	3.1
2010	20	12,218	5,521	91	3.1
2011	20	12,182	5,335	90	3.1
2012	20	12,002	5,355	90	3.1
2014	20	12,034	.	90	3.2
2015	20	11,926	5,330	91	3.2
2017	20	11,491	4,825	91	3.2
2018	19	11,448	4,583	88	3.1
2021	19	11,199	.	85	3.0

Housing

HOUSING UNITS (DECENNIAL)



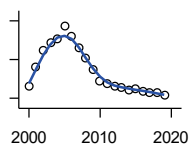
U.S. Census Bureau: Decennial Census

Year	County	State of Kansas	Non Metro Kansas	County Rank	Per 1000 or \$ Per Capita
1950	2,653	586,650	328,210	67	313.4
1960	2,545	672,899	329,380	64	331.5
1970	2,723	789,735	363,824	67	443.1
1980	3,270	955,207	416,877	61	492.5
1990	3,317	1,044,112	417,062	58	503.6
2000	3,228	1,131,395	422,218	56	494.7
2010	3,239	1,233,215	424,050	55	498.5
2020	3,080	1,275,689	413,120	56	483.1

County: county value. Kansas: state value. County Rank: highest county value ranked #1. (\$000): thousands of dollars. Nonmetro Kansas: Kansas total less Metropolitan Areas as defined by the Office of Management and Budget (OMB; released 3/6/2020). Per 1000: For nonmoney amounts, Per 1000=(county value / county population for the same year as the data) x 1000. \$ Per capita=(county value / county population for the same year as the data). Value= . indicates missing or suppressed data or value not calculated.

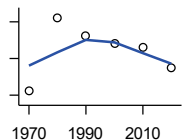
Housing

HOUSING UNITS (ESTIMATED)



U.S. Census Bureau

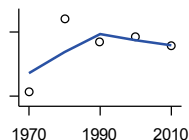
Year	County	State of Kansas	Non Metro Kansas	County Rank	Per 1000 or \$ Per Capita
2000	3,232	1,134,529	422,560	56	495.3
2001	3,252	1,146,858	423,876	56	502.1
2002	3,270	1,160,129	425,089	55	509.4
2003	3,277	1,171,620	425,936	55	508.9
2004	3,281	1,184,702	426,593	55	509.7
2005	3,295	1,195,791	426,964	55	514.5
2006	3,284	1,206,692	426,713	55	508.0
2007	3,272	1,217,608	426,090	55	503.2
2008	3,262	1,225,625	425,768	55	504.1
2009	3,250	1,230,552	424,776	55	505.3
2010	3,238	1,234,456	424,174	55	498.4
2011	3,235	1,238,052	424,549	56	500.7
2012	3,233	1,241,992	425,116	56	500.3
2013	3,231	1,246,675	425,699	56	507.6
2014	3,229	1,253,284	426,269	56	508.9
2015	3,230	1,258,999	426,844	56	512.5
2016	3,227	1,265,684	427,465	56	512.1
2017	3,226	1,273,536	427,746	56	513.4
2018	3,226	1,280,649	428,099	56	523.4
2019	3,223	1,288,401	428,495	56	528.2



OCCUPIED HOUSING UNITS

U.S. Census Bureau: Decennial Census

Year	County	State of Kansas	Non Metro Kansas	County Rank	Per 1000 or \$ Per Capita
1970	2,225	727,364	326,494	68	362.0
1980	2,622	872,239	371,693	63	394.9
1990	2,522	944,726	365,901	62	382.9
2000	2,481	1,037,891	375,313	64	380.2
2010	2,463	1,112,096	370,269	62	379.1
2020	2,352	1,151,360	356,330	59	368.9



OWNER OCCUPIED HOUSING UNITS

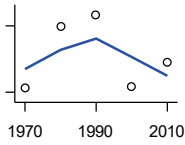
U.S. Census Bureau: Decennial Census

Year	County	State of Kansas	Non Metro Kansas	County Rank	Per 1000 or \$ Per Capita
1970	1,721	502,585	236,338	67	280.0
1980	2,062	612,433	277,096	63	310.5
1990	1,952	641,762	263,099	61	296.4
2000	1,976	718,703	271,350	63	302.8
2010	1,936	753,532	261,763	60	298.0

County: county value. Kansas: state value. County Rank: highest county value ranked #1. (\$000): thousands of dollars. Nonmetro Kansas: Kansas total less Metropolitan Areas as defined by the Office of Management and Budget (OMB; released 3/6/2020). Per 1000: For nonmoney amounts, Per 1000=(county value / county population for the same year as the data) x 1000. \$ Per capita=(county value / county population for the same year as the data). Value= . indicates missing or suppressed data or value not calculated.

Housing

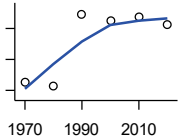
RENTER OCCUPIED HOUSING UNITS



U.S. Census Bureau: Decennial Census

Year	County	State of Kansas	Non Metro Kansas	County Rank	Per 1000 or \$ Per Capita
1970	504	224,779	90,156	67	82.0
1980	560	259,806	94,597	66	84.3
1990	570	302,964	102,802	65	86.5
2000	505	319,188	103,963	67	77.4
2010	527	358,564	108,506	66	81.1

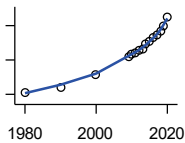
VACANT HOUSING UNITS



U.S. Census Bureau: Decennial Census

Year	County	State of Kansas	Non Metro Kansas	County Rank	Per 1000 or \$ Per Capita
1970	352	60,058	35,954	61	57.3
1980	324	77,912	41,584	66	48.8
1990	795	99,386	51,161	30	120.7
2000	747	93,309	46,904	30	114.5
2010	776	121,119	53,781	35	119.4
2020	728	124,329	56,790	39	114.2

MEDIAN VALUE (\$): OWNER OCCUPIED HOUSING UNITS



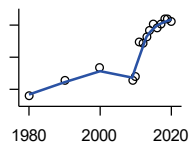
U.S. Census Bureau, Decennial Census (- 2000), (2009 -) American Community Survey five-year average ending in year shown.

Year	County	State of Kansas	Non Metro Kansas	County Rank	Per 1000 or \$ Per Capita
1980	22,600	37,800	.	86	.
1990	28,300	52,200	.	71	.
2000	43,400	83,500	.	78	.
2009	64,200	118,500	.	72	.
2010	67,400	122,600	.	68	.
2011	68,900	125,500	.	70	.
2012	71,100	127,400	.	68	.
2013	73,300	128,400	.	68	.
2014	78,200	129,400	.	62	.
2015	81,400	132,000	.	62	.
2016	85,700	135,300	.	55	.
2017	88,500	139,200	.	49	.
2018	94,200	145,400	.	51	.
2019	99,400	151,900	.	47	.
2020	110,100	157,600	.	35	.

County: county value. Kansas: state value. County Rank: highest county value ranked #1. (\$000): thousands of dollars. Nonmetro Kansas: Kansas total less Metropolitan Areas as defined by the Office of Management and Budget (OMB; released 3/6/2020). Per 1000: For nonmoney amounts, Per 1000=(county value / county population for the same year as the data) x 1000. \$ Per capita=(county value / county population for the same year as the data). Value= . indicates missing or suppressed data or value not calculated.

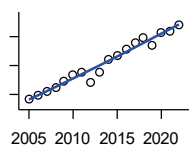
Housing

MEDIAN CONTRACT RENT (\$)



U.S. Census Bureau, Decennial Census (- 2000), (2009 -) American Community Survey five-year average ending in year shown.

Year	County	State of Kansas	Non Metro Kansas	County Rank	Per 1000 or \$ Per Capita
1980	157	219	.	69	.
1990	258	372	.	62	.
2000	336	498	.	79	.
2009	255	491	.	95	.
2010	279	507	.	89	.
2011	497	699	.	77	.
2012	487	715	.	86	.
2013	526	732	.	76	.
2014	567	748	.	62	.
2015	607	757	.	50	.
2016	586	775	.	65	.
2017	605	801	.	64	.
2018	635	831	.	53	.
2019	639	850	.	60	.
2020	619	863	.	72	.



FAIR MARKET RENT: 2 BEDROOMS

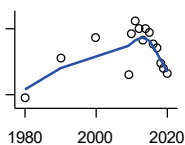
U.S. Department of Housing and Urban Development (HUD)

Year	County	State of Kansas	Non Metro Kansas	County Rank	Per 1000 or \$ Per Capita
2005	486	.	.	53	.
2006	497	.	.	105	.
2007	512	.	.	105	.
2008	525	628	.	105	.
2009	547	653	.	105	.
2010	569	678	.	56	.
2011	578	684	.	56	.
2012	540	660	.	105	.
2013	577	712	.	105	.
2014	622	746	.	105	.
2015	634	756	.	105	.
2016	658	781	.	105	.
2017	681	811	.	105	.
2018	697	815	.	105	.
2019	672	828	.	105	.
2020	714	855	.	105	.
2021	718	874	.	105	.
2022	742	879	.	105	.

County: county value. Kansas: state value. County Rank: highest county value ranked #1. (\$000): thousands of dollars. Nonmetro Kansas: Kansas total less Metropolitan Areas as defined by the Office of Management and Budget (OMB; released 3/6/2020). Per 1000: For nonmoney amounts, Per 1000=(county value / county population for the same year as the data) x 1000. \$ Per capita=(county value / county population for the same year as the data). Value= . indicates missing or suppressed data or value not calculated.

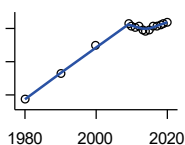
Education

POPULATION AGE 25+



U.S. Census Bureau, Decennial Census (- 2000), (2009 -) American Community Survey five-year average ending in year shown.

Year	County	State of Kansas	Non Metro Kansas	County Rank	Per 1000 or \$ Per Capita
1980	4,384	1,388,102	596,639	.	.
1990	4,568	1,565,936	608,745	.	.
2000	4,660	1,701,207	618,131	.	.
2009	4,493	1,775,427	600,188	.	.
2010	4,680	1,802,904	608,716	.	.
2011	4,736	1,822,400	610,386	.	.
2012	4,699	1,838,079	611,103	.	.
2013	4,647	1,850,010	610,374	.	.
2014	4,700	1,861,894	609,612	.	.
2015	4,683	1,869,698	606,967	.	.
2016	4,631	1,878,495	604,563	.	.
2017	4,612	1,886,741	601,076	.	.
2018	4,544	1,894,675	598,487	.	.
2019	4,521	1,902,279	595,501	.	.
2020	4,498	1,911,990	593,923	.	.



PERCENT HS GRADUATE OR HIGHER AGE 25+

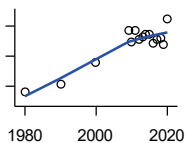
U.S. Census Bureau, Decennial Census (- 2000), (2009 -) American Community Survey five-year average ending in year shown.

Year	County	State of Kansas	Non Metro Kansas	County Rank	Per 1000 or \$ Per Capita
1980	68.6	73.3	.	57	.
1990	76.6	81.3	.	67	.
2000	84.8	86.0	.	50	.
2009	91.4	89.0	.	17	.
2010	90.6	89.2	.	32	.
2011	90.4	89.5	.	38	.
2012	90.6	89.7	.	38	.
2013	89.7	89.8	.	60	.
2014	89.2	90.0	.	65	.
2015	89.6	90.2	.	67	.
2016	90.7	90.3	.	57	.
2017	90.8	90.5	.	61	.
2018	91.2	90.7	.	55	.
2019	91.6	91.0	.	54	.
2020	91.7	91.4	.	59	.

County: county value. Kansas: state value. County Rank: highest county value ranked #1. (\$000): thousands of dollars. Nonmetro Kansas: Kansas total less Metropolitan Areas as defined by the Office of Management and Budget (OMB; released 3/6/2020). Per 1000: For nonmoney amounts, Per 1000=(county value / county population for the same year as the data) x 1000. \$ Per capita=(county value / county population for the same year as the data). Value= . indicates missing or suppressed data or value not calculated.

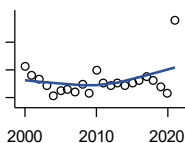
Education

PERCENT BACHELORS DEGREE OR HIGHER AGE 25+



U.S. Census Bureau, Decennial Census (- 2000), (2009 -) American Community Survey five-year average ending in year shown.

Year	County	State of Kansas	Non Metro Kansas	County Rank	Per 1000 or \$ Per Capita
1980	11.6	17.0	.	59	.
1990	12.8	21.1	.	64	.
2000	16.4	25.8	.	61	.
2009	21.7	28.8	.	24	.
2010	19.8	29.3	.	44	.
2011	21.8	29.7	.	27	.
2012	20.2	30.0	.	43	.
2013	20.8	30.3	.	44	.
2014	21.1	30.7	.	43	.
2015	21.2	31.0	.	50	.
2016	19.7	31.6	.	65	.
2017	20.3	32.3	.	63	.
2018	20.4	32.9	.	64	.
2019	19.5	33.4	.	77	.
2020	23.7	33.9	.	43	.



PUBLIC SCHOOL ENROLLMENT (FTE) SCHOOL YEAR BEGINNING...

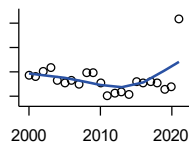
Kansas State Department of Education

Year	County	State of Kansas	Non Metro Kansas	County Rank	Per 1000 or \$ Per Capita
2000	1,222.0	448,150.8	166,722.5	57	187.3
2001	1,158.5	447,047.1	164,365.0	59	178.9
2002	1,129.8	444,860.3	161,555.4	59	176.0
2003	1,090.3	443,620.6	159,130.2	58	169.3
2004	1,016.0	441,957.2	156,566.3	62	157.8
2005	1,048.1	442,708.4	155,197.2	60	163.7
2006	1,055.4	444,878.7	153,842.3	59	163.2
2007	1,039.9	446,831.3	152,337.1	59	159.9
2008	1,092.6	447,730.0	150,572.7	56	168.8
2009	1,032.3	453,202.5	151,246.8	59	160.5
2010	1,200.0	455,405.0	151,023.8	54	184.7
2011	1,109.3	456,000.5	150,257.9	57	171.7
2012	1,085.2	458,496.4	150,463.0	58	167.9
2013	1,101.4	461,950.0	150,420.9	57	173.0
2014	1,087.2	464,395.4	150,499.4	57	171.3
2015	1,103.7	463,504.0	149,539.3	56	175.1
2016	1,128.2	459,920.3	147,293.5	55	179.0
2017	1,149.2	477,977.9	152,096.3	56	182.9
2018	1,125.6	476,481.7	150,456.8	56	182.6
2019	1,073.4	476,525.1	150,045.2	56	175.9
2020	1,032.0	462,088.0	146,369.6	57	161.9
2021	1,558.6	463,652.4	147,500.4	43	246.0

County: county value. Kansas: state value. County Rank: highest county value ranked #1. (\$000): thousands of dollars. Nonmetro Kansas: Kansas total less Metropolitan Areas as defined by the Office of Management and Budget (OMB; released 3/6/2020). Per 1000: For nonmoney amounts, Per 1000=(county value / county population for the same year as the data) x 1000. \$ Per capita=(county value / county population for the same year as the data). Value= . indicates missing or suppressed data or value not calculated.

Education

PUPIL/TEACHER RATIO SCHOOL YEAR BEGINNING...

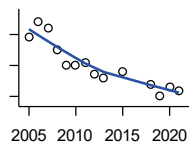


Kansas State Department of Education

Year	County	State of Kansas	Non Metro Kansas	County Rank	Per 1000 or \$ Per Capita
2000	11.7	15.4	13.9	82	.
2001	11.6	15.3	13.8	83	.
2002	12.0	15.4	13.9	81	.
2003	12.3	15.5	13.8	67	.
2004	11.3	15.3	13.6	84	.
2005	11.1	15.0	13.4	85	.
2006	11.3	14.7	13.2	75	.
2007	11.0	14.6	13.1	85	.
2008	11.9	14.4	12.9	56	.
2009	11.9	14.8	13.2	67	.
2010	11.1	15.2	13.6	88	.
2011	10.0	15.1	13.5	99	.
2012	10.2	15.1	13.5	95	.
2013	10.3	15.1	13.5	95	.
2014	10.1	15.0	13.6	97	.
2015	11.2	15.2	13.9	81	.
2016	11.1	15.1	13.7	85	.
2017	11.2	15.5	13.9	87	.
2018	11.1	15.3	13.8	83	.
2019	10.6	15.2	13.7	89	.
2020	10.7	14.7	13.4	87	.
2021	16.4	14.8	13.5	6	.

Social Environment

CHILD CARE FACILITIES: TOTAL CHILD CARE FACILITIES



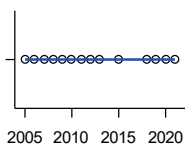
Kansas Department of Health and Environment, Bureau of Adult and Child Care

Year	County	State of Kansas	Non Metro Kansas	County Rank	Per 1000 or \$ Per Capita
2005	29	8,258	3,378	52	4.5
2006	34	8,442	3,429	46	5.3
2007	32	8,241	3,317	48	4.9
2008	25	8,011	3,150	56	3.9
2009	20	7,853	3,066	64	3.1
2010	20	7,354	2,858	62	3.1
2011	21	6,835	2,623	58	3.3
2012	17	6,346	2,409	62	2.6
2013	16	5,754	2,179	61	2.5
2015	18	5,289	2,146	55	2.9
2018	14	4,607	1,904	64	2.3
2019	10	4,287	1,774	69	1.6
2020	13	4,274	1,798	65	2.0
2021	12	4,002	1,700	63	1.9

County: county value. Kansas: state value. County Rank: highest county value ranked #1. (\$000): thousands of dollars. Nonmetro Kansas: Kansas total less Metropolitan Areas as defined by the Office of Management and Budget (OMB; released 3/6/2020). Per 1000: For nonmoney amounts, Per 1000=(county value / county population for the same year as the data) x 1000. \$ Per capita=(county value / county population for the same year as the data). Value= . indicates missing or suppressed data or value not calculated.

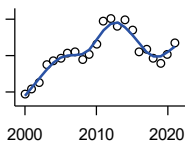
Social Environment

**CHILD CARE FACILITIES:
PRESCHOOLS**



Kansas Department of Health and Environment, Bureau of Adult and Child Care

Year	County	State of Kansas	Non Metro Kansas	County Rank	Per 1000 or \$ Per Capita
2005	1	243	140	79	0.2
2006	1	221	127	76	0.2
2007	1	208	119	76	0.2
2008	1	204	114	73	0.2
2009	1	194	107	72	0.2
2010	1	194	112	73	0.2
2011	1	209	123	76	0.2
2012	1	201	121	74	0.2
2013	1	140	84	64	0.2
2015	1	185	113	71	0.2
2018	1	150	94	60	0.2
2019	1	134	83	56	0.2
2020	1	126	78	55	0.2
2021	1	120	74	53	0.2



FOOD STAMP BENEFICIARIES

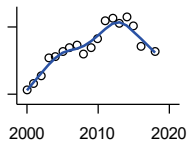
Kansas Social and Rehabilitation Services

Year	County	State of Kansas	Non Metro Kansas	County Rank	Per 1000 or \$ Per Capita
2000	145	110,619	44,825	71	22.2
2001	159	117,241	46,741	71	24.5
2002	176	131,726	52,342	72	27.4
2003	226	155,908	61,280	69	35.1
2004	234	167,971	65,852	69	36.4
2005	244	175,710	67,261	68	38.1
2006	256	182,821	67,487	66	39.6
2007	261	184,035	66,979	64	40.1
2008	238	187,377	67,160	68	36.8
2009	253	208,007	73,637	66	39.3
2010	280	259,609	90,919	71	43.1
2011	345	296,542	101,155	65	53.4
2012	352	303,257	102,478	65	54.5
2013	331	316,424	105,345	67	52.0
2014	347	301,377	100,761	65	54.7
2015	320	277,614	93,353	66	50.8
2016	261	258,412	88,343	70	41.4
2017	266	239,592	82,070	68	42.3
2018	241	219,738	75,208	71	39.1
2019	229	205,261	69,899	70	37.5
2020	254	198,457	66,721	65	39.8
2021	286	203,424	68,883	61	45.1

County: county value. Kansas: state value. County Rank: highest county value ranked #1. (\$000): thousands of dollars. Nonmetro Kansas: Kansas total less Metropolitan Areas as defined by the Office of Management and Budget (OMB; released 3/6/2020). Per 1000: For nonmoney amounts, Per 1000=(county value / county population for the same year as the data) x 1000. \$ Per capita=(county value / county population for the same year as the data). Value= . indicates missing or suppressed data or value not calculated.

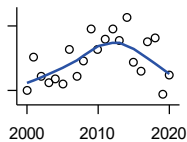
Social Environment

PERCENT OF POPULATION RECEIVING FOOD STAMPS



U.S. Dept. of Agriculture Food and Nutrition Service (1990-1997); Kansas Social and Rehabilitation Services (1998-)

Year	County	State of Kansas	Non Metro Kansas	County Rank	Per 1000 or \$ Per Capita
2000	2.2	4.1	.	92	.
2001	2.5	4.3	.	87	.
2002	2.8	4.9	.	86	.
2003	3.6	5.7	.	81	.
2004	3.7	6.2	.	82	.
2005	3.9	6.4	.	81	.
2006	4.1	6.6	.	80	.
2007	4.2	6.6	.	79	.
2008	3.8	6.7	.	84	.
2009	4.1	7.4	.	84	.
2010	4.5	9.1	.	93	.
2011	5.3	10.3	.	89	.
2012	5.4	10.5	.	86	.
2013	5.2	10.9	.	88	.
2014	5.5	10.4	.	86	.
2015	5.1	9.6	.	87	.
2016	4.1	8.9	.	97	.
2018	3.9	7.5	.	93	.



ESTIMATED NUMBER OF PEOPLE IN POVERTY

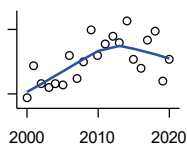
U.S. Census Bureau, Small Area Income and Poverty Estimates

Year	County	State of Kansas	Non Metro Kansas	County Rank	Per 1000 or \$ Per Capita
2000	501	235,087	98,984	70	76.8
2001	578	252,134	106,257	67	89.2
2002	532	265,673	107,542	69	82.9
2003	517	278,163	107,323	70	80.3
2004	528	297,733	111,534	69	82.0
2005	514	310,667	118,768	73	80.3
2006	595	327,102	123,700	68	92.0
2007	533	301,828	111,953	67	82.0
2008	568	307,804	113,015	62	87.8
2009	642	359,692	123,394	59	99.8
2010	596	374,677	131,502	68	91.7
2011	619	383,859	134,912	67	95.8
2012	644	392,095	133,800	62	99.7
2013	616	391,718	134,067	67	96.8
2014	670	381,506	130,213	60	105.6
2015	566	366,069	123,073	68	89.8
2016	545	343,773	121,314	71	86.5
2017	613	335,371	116,854	60	97.5
2018	622	336,892	114,490	62	100.9
2019	490	319,931	110,692	70	80.3
2020	535	300,931	100,998	65	83.9

County: county value. Kansas: state value. County Rank: highest county value ranked #1. (\$000): thousands of dollars. Nonmetro Kansas: Kansas total less Metropolitan Areas as defined by the Office of Management and Budget (OMB; released 3/6/2020). Per 1000: For nonmoney amounts, Per 1000=(county value / county population for the same year as the data) x 1000. \$ Per capita=(county value / county population for the same year as the data). Value= . indicates missing or suppressed data or value not calculated.

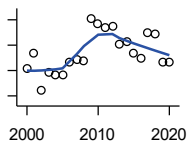
Social Environment

ESTIMATED % OF PEOPLE IN POVERTY



U.S. Census Bureau, Small Area Income and Poverty Estimates

Year	County	State of Kansas	Non Metro Kansas	County Rank	Per 1000 or \$ Per Capita
2000	8.8	8.9	.	84	.
2001	10.3	9.5	.	67	.
2002	9.5	10.0	.	87	.
2003	9.3	10.4	.	85	.
2004	9.5	11.1	.	84	.
2005	9.4	11.7	.	92	.
2006	10.8	12.2	.	82	.
2007	9.7	11.2	.	87	.
2008	10.5	11.3	.	70	.
2009	12.0	13.2	.	62	.
2010	10.8	13.5	.	81	.
2011	11.3	13.8	.	78	.
2012	11.7	14.0	.	67	.
2013	11.4	13.9	.	74	.
2014	12.4	13.5	.	57	.
2015	10.6	12.9	.	83	.
2016	10.2	12.2	.	88	.
2017	11.5	11.9	.	65	.
2018	11.9	11.9	.	60	.
2019	9.6	11.3	.	90	.
2020	10.6	10.6	.	55	.



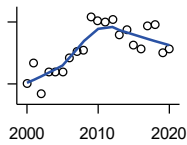
EST. NUMBER OF RELATED CHILDREN AGE 5 TO 17 IN FAMILIES IN POVERTY

U.S. Census Bureau, Small Area Income and Poverty Estimates

Year	County	State of Kansas	Non Metro Kansas	County Rank	Per 1000 or \$ Per Capita
2000	82	50,388	21,854	86	12.6
2001	94	53,755	23,094	82	14.5
2002	64	52,453	21,423	92	10.0
2003	79	55,419	21,809	79	12.3
2004	77	59,392	22,313	80	12.0
2005	77	60,203	24,244	86	12.0
2006	87	64,427	25,326	82	13.5
2007	89	61,149	23,639	77	13.7
2008	88	59,842	22,661	77	13.6
2009	121	71,850	26,251	66	18.8
2010	117	81,077	29,804	76	18.0
2011	114	82,311	29,306	75	17.6
2012	115	87,594	29,781	74	17.8
2013	101	84,325	29,253	80	15.9
2014	103	83,873	29,354	79	16.2
2015	94	78,192	27,482	79	14.9
2016	90	67,810	25,074	80	14.3
2017	110	67,873	25,032	69	17.5
2018	109	68,153	24,928	73	17.7
2019	87	64,613	23,117	81	14.3
2020	87	59,792	21,143	76	13.6

County: county value. Kansas: state value. County Rank: highest county value ranked #1. (\$000): thousands of dollars. Nonmetro Kansas: Kansas total less Metropolitan Areas as defined by the Office of Management and Budget (OMB; released 3/6/2020). Per 1000: For nonmoney amounts, Per 1000=(county value / county population for the same year as the data) x 1000. \$ Per capita=(county value / county population for the same year as the data). Value= . indicates missing or suppressed data or value not calculated.

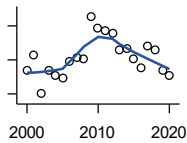
Social Environment



EST. % OF RELATED CHILDREN AGE 5 TO 17 IN FAMILIES IN POVERTY

U.S. Census Bureau, Small Area Income and Poverty Estimates

Year	County	State of Kansas	Non Metro Kansas	County Rank	Per 1000 or \$ Per Capita
2000	8.1	10.0	.	93	.
2001	10.0	10.8	.	87	.
2002	7.0	10.5	.	102	.
2003	9.2	11.3	.	94	.
2004	9.1	12.5	.	99	.
2005	9.2	12.8	.	98	.
2006	10.5	13.2	.	92	.
2007	11.1	12.6	.	85	.
2008	11.3	12.3	.	84	.
2009	14.5	14.7	.	66	.
2010	14.1	15.9	.	79	.
2011	14.0	16.2	.	78	.
2012	14.3	17.2	.	76	.
2013	12.8	16.5	.	87	.
2014	13.3	16.4	.	82	.
2015	11.8	15.3	.	90	.
2016	11.4	13.2	.	86	.
2017	13.6	13.4	.	76	.
2018	13.7	13.5	.	76	.
2019	11.0	12.9	.	90	.
2020	11.4	11.9	.	84	.



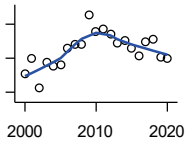
ESTIMATED NUMBER UNDER 18 IN POVERTY

U.S. Census Bureau, Small Area Income and Poverty Estimates

Year	County	State of Kansas	Non Metro Kansas	County Rank	Per 1000 or \$ Per Capita
2000	128	82,619	34,843	83	19.6
2001	146	87,487	36,724	80	22.5
2002	101	84,181	32,870	88	15.7
2003	128	93,896	36,004	77	19.9
2004	121	98,641	36,272	80	18.8
2005	119	100,254	39,118	84	18.6
2006	138	105,193	41,054	81	21.3
2007	143	100,242	37,881	76	22.0
2008	141	100,146	37,552	77	21.8
2009	191	118,187	42,682	66	29.7
2010	177	129,009	46,428	76	27.2
2011	175	133,478	46,832	75	27.1
2012	172	135,261	46,294	74	26.6
2013	152	131,251	44,952	80	23.9
2014	154	125,562	43,933	78	24.3
2015	141	119,994	41,828	80	22.4
2016	131	100,996	37,387	80	20.8
2017	156	102,858	37,955	71	24.8
2018	152	102,616	36,991	75	24.7
2019	128	97,920	34,797	80	21.0
2020	122	88,491	30,767	78	19.1

County: county value. Kansas: state value. County Rank: highest county value ranked #1. (\$000): thousands of dollars. Nonmetro Kansas: Kansas total less Metropolitan Areas as defined by the Office of Management and Budget (OMB; released 3/6/2020). Per 1000: For nonmoney amounts, Per 1000=(county value / county population for the same year as the data) x 1000. \$ Per capita=(county value / county population for the same year as the data). Value= . indicates missing or suppressed data or value not calculated.

Social Environment



ESTIMATED PERCENT UNDER 18 IN POVERTY

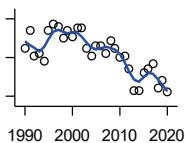
U.S. Census Bureau, Small Area Income and Poverty Estimates

Year	County	State of Kansas	Non Metro Kansas	County Rank	Per 1000 or \$ Per Capita
2000	10.1	11.9	.	91	.
2001	11.9	12.7	.	87	.
2002	8.5	12.1	.	101	.
2003	11.5	13.8	.	93	.
2004	11.1	14.6	.	96	.
2005	11.2	15.2	.	96	.
2006	13.1	15.4	.	87	.
2007	13.6	14.7	.	80	.
2008	13.7	14.6	.	81	.
2009	17.1	17.1	.	62	.
2010	15.2	18.1	.	83	.
2011	15.4	18.8	.	84	.
2012	14.9	19.0	.	80	.
2013	13.8	18.4	.	89	.
2014	14.1	17.6	.	83	.
2015	13.1	16.9	.	91	.
2016	12.2	14.3	.	88	.
2017	14.0	14.7	.	82	.
2018	14.2	14.8	.	82	.
2019	12.1	14.3	.	90	.
2020	12.0	13.0	.	83	.

County: county value. Kansas: state value. County Rank: highest county value ranked #1. (\$000): thousands of dollars. Nonmetro Kansas: Kansas total less Metropolitan Areas as defined by the Office of Management and Budget (OMB; released 3/6/2020). Per 1000: For nonmoney amounts, Per 1000=(county value / county population for the same year as the data) x 1000. \$ Per capita=(county value / county population for the same year as the data). Value= . indicates missing or suppressed data or value not calculated.

Business

ESTABLISHMENTS TOTAL COUNTY BUSINESS PATTERNS



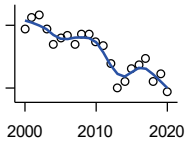
U.S. Census Bureau, County Business Patterns. Beginning with the 2017 data, any tabulation with fewer than 3 establishments were omitted from the release. Data for these establishments are included in the broader total.

Year	County	State of Kansas	Non Metro Kansas	County Rank	Per 1000 or \$ Per Capita
1990	185	65,858	26,802	64	28.1
1991	194	65,941	26,750	60	29.2
1992	181	67,630	27,229	64	27.5
1993	182	68,930	27,655	64	27.6
1994	178	69,822	27,763	65	27.1
1995	194	70,894	28,111	64	29.6
1996	197	72,017	28,353	64	30.1
1997	196	73,924	28,884	65	30.0
1998	190	74,019	28,749	66	29.1
1999	194	74,486	28,536	65	29.9
2000	191	74,939	28,475	65	29.3
2001	195	74,565	28,282	64	30.1
2002	195	75,077	28,183	63	30.4
2003	185	74,972	27,998	64	28.7
2004	181	75,827	28,009	65	28.1
2005	186	76,173	27,830	64	29.0
2006	186	76,446	27,653	62	28.8
2007	182	77,157	27,736	64	28.0
2008	189	76,096	27,314	63	29.2
2009	185	74,698	26,839	64	28.8
2010	180	74,301	26,739	63	27.7
2011	181	73,598	26,555	63	28.0
2012	174	73,944	26,534	65	26.9
2013	163	73,816	26,393	66	25.6
2014	163	74,055	26,292	65	25.7
2015	172	74,526	26,355	65	27.3
2016	174	74,884	26,172	65	27.6
2017	177	74,947	26,093	64	28.2
2018	164	74,559	25,802	65	26.6
2019	168	74,292	25,536	65	27.5
2020	162	73,982	25,178	64	25.4

County: county value. Kansas: state value. County Rank: highest county value ranked #1. (\$000): thousands of dollars. Nonmetro Kansas: Kansas total less Metropolitan Areas as defined by the Office of Management and Budget (OMB; released 3/6/2020). Per 1000: For nonmoney amounts, Per 1000=(county value / county population for the same year as the data) x 1000. \$ Per capita=(county value / county population for the same year as the data). Value= . indicates missing or suppressed data or value not calculated.

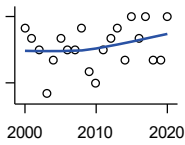
Business

**ESTABLISHMENTS: 1-19
EMPLOYEES**



U.S. Census Bureau, County Business Patterns. Beginning with the 2017 data, any tabulation with fewer than 3 establishments were omitted from the release. Data for these establishments are included in the broader total.

Year	County	State of Kansas	Non Metro Kansas	County Rank	Per 1000 or \$ Per Capita
2000	168	64,527	25,381	67	25.7
2001	174	64,176	25,248	64	26.9
2002	175	64,886	25,208	64	27.3
2003	168	64,714	25,020	64	26.1
2004	161	65,554	24,995	65	25.0
2005	164	65,796	24,839	65	25.6
2006	165	65,764	24,589	64	25.5
2007	161	66,446	24,701	65	24.8
2008	166	65,322	24,257	64	25.7
2009	166	64,128	23,851	64	25.8
2010	162	64,015	23,857	65	24.9
2011	160	63,251	23,571	64	24.8
2012	152	63,519	23,575	65	23.5
2013	140	63,197	23,396	67	22.0
2014	143	63,113	23,229	66	22.5
2015	149	63,280	23,227	65	23.6
2016	151	63,630	23,117	65	24.0
2017	154	63,619	23,022	65	24.5
2018	143	63,233	22,745	65	23.2
2019	147	62,904	22,489	65	24.1
2020	138	62,634	22,173	65	21.6



**ESTABLISHMENTS: 20-99
EMPLOYEES**

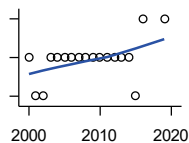
U.S. Census Bureau, County Business Patterns. Beginning with the 2017 data, any tabulation with fewer than 3 establishments were omitted from the release. Data for these establishments are included in the broader total.

Year	County	State of Kansas	Non Metro Kansas	County Rank	Per 1000 or \$ Per Capita
2000	21	8,714	2,653	50	3.2
2001	20	8,692	2,593	47	3.1
2002	19	8,582	2,554	48	3.0
2003	15	8,642	2,568	58	2.3
2004	18	8,658	2,590	50	2.8
2005	20	8,685	2,553	47	3.1
2006	19	8,922	2,612	51	2.9
2007	19	8,938	2,574	51	2.9
2008	21	8,939	2,587	48	3.2
2009	17	8,848	2,551	52	2.6
2010	16	8,612	2,454	52	2.5
2011	19	8,668	2,540	47	2.9
2012	20	8,700	2,500	46	3.1
2013	21	8,870	2,541	45	3.3
2014	18	9,121	2,590	51	2.8
2015	22	9,374	2,664	46	3.5
2016	20	9,412	2,596	46	3.2
2017	22	9,487	2,638	45	3.5
2018	18	9,485	2,621	48	2.9
2019	18	9,485	2,591	47	2.9
2020	22	9,471	2,545	42	3.5

County: county value. Kansas: state value. County Rank: highest county value ranked #1. (\$000): thousands of dollars. Nonmetro Kansas: Kansas total less Metropolitan Areas as defined by the Office of Management and Budget (OMB; released 3/6/2020). Per 1000: For nonmoney amounts, Per 1000=(county value / county population for the same year as the data) x 1000. \$ Per capita=(county value / county population for the same year as the data). Value= . indicates missing or suppressed data or value not calculated.

Business

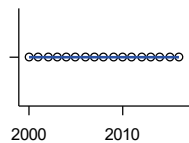
ESTABLISHMENTS: 100-499 EMPLOYEES



U.S. Census Bureau, County Business Patterns. Beginning with the 2017 data, any tabulation with fewer than 3 establishments were omitted from the release. Data for these establishments are included in the broader total.

Year	County	State of Kansas	Non Metro Kansas	County Rank	Per 1000 or \$ Per Capita
2000	2	1,555	409	62	0.3
2001	1	1,555	406	86	0.2
2002	1	1,464	386	81	0.2
2003	2	1,470	378	59	0.3
2004	2	1,463	388	57	0.3
2005	2	1,537	400	59	0.3
2006	2	1,598	407	64	0.3
2007	2	1,602	416	63	0.3
2008	2	1,653	421	63	0.3
2009	2	1,551	394	60	0.3
2010	2	1,513	382	58	0.3
2011	2	1,523	395	58	0.3
2012	2	1,567	410	56	0.3
2013	2	1,581	407	59	0.3
2014	2	1,641	421	62	0.3
2015	1	1,693	414	86	0.2
2016	3	1,671	406	48	0.5
2019	3	1,718	.	44	0.5

ESTABLISHMENTS: 500 OR MORE EMPLOYEES



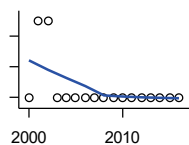
U.S. Census Bureau, County Business Patterns. Beginning with the 2017 data, any tabulation with fewer than 3 establishments were omitted from the release. Data for these establishments are included in the broader total.

Year	County	State of Kansas	Non Metro Kansas	County Rank	Per 1000 or \$ Per Capita
2000	0	143	32	105	0.0
2001	0	142	35	105	0.0
2002	0	145	35	105	0.0
2003	0	146	32	105	0.0
2004	0	152	36	105	0.0
2005	0	155	38	105	0.0
2006	0	162	45	105	0.0
2007	0	171	45	105	0.0
2008	0	182	49	105	0.0
2009	0	171	43	105	0.0
2010	0	161	46	105	0.0
2011	0	156	49	105	0.0
2012	0	158	49	105	0.0
2013	0	168	49	105	0.0
2014	0	180	52	105	0.0
2015	0	179	50	105	0.0
2016	0	171	53	105	0.0

County: county value. Kansas: state value. County Rank: highest county value ranked #1. (\$000): thousands of dollars. Nonmetro Kansas: Kansas total less Metropolitan Areas as defined by the Office of Management and Budget (OMB; released 3/6/2020). Per 1000: For nonmoney amounts, Per 1000=(county value / county population for the same year as the data) x 1000. \$ Per capita=(county value / county population for the same year as the data). Value= . indicates missing or suppressed data or value not calculated.

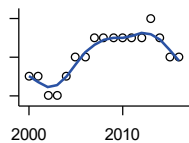
Business

ESTABLISHMENTS: FORESTRY, FISHING, HUNTING, AND AG SUPPORT



U.S. Census Bureau, County Business Patterns. Beginning with the 2017 data, any tabulation with fewer than 3 establishments were omitted from the release. Data for these establishments are included in the broader total.

Year	County	State of Kansas	Non Metro Kansas	County Rank	Per 1000 or \$ Per Capita
2000	0	190	149	105	0.0
2001	1	217	168	80	0.2
2002	1	224	176	84	0.2
2003	0	217	173	105	0.0
2004	0	211	165	105	0.0
2005	0	188	148	105	0.0
2006	0	193	158	105	0.0
2007	0	212	170	105	0.0
2008	0	197	158	105	0.0
2009	0	191	154	105	0.0
2010	0	192	161	105	0.0
2011	0	193	157	105	0.0
2012	0	204	164	105	0.0
2013	0	208	166	105	0.0
2014	0	194	152	105	0.0
2015	0	192	149	105	0.0
2016	0	181	142	105	0.0



ESTABLISHMENTS: MINING

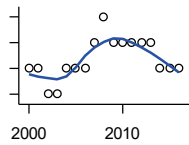
U.S. Census Bureau, County Business Patterns. Beginning with the 2017 data, any tabulation with fewer than 3 establishments were omitted from the release. Data for these establishments are included in the broader total.

Year	County	State of Kansas	Non Metro Kansas	County Rank	Per 1000 or \$ Per Capita
2000	2	868	619	70	0.3
2001	2	878	622	69	0.3
2002	1	847	615	89	0.2
2003	1	864	633	88	0.2
2004	2	880	647	67	0.3
2005	3	941	695	56	0.5
2006	3	991	734	59	0.5
2007	4	1,000	759	48	0.6
2008	4	1,047	799	49	0.6
2009	4	1,016	772	48	0.6
2010	4	1,009	762	45	0.6
2011	4	1,013	763	46	0.6
2012	4	1,048	789	48	0.6
2013	5	1,060	802	47	0.8
2014	4	1,102	828	51	0.6
2015	3	1,069	810	62	0.5
2016	3	990	747	59	0.5

County: county value. Kansas: state value. County Rank: highest county value ranked #1. (\$000): thousands of dollars. Nonmetro Kansas: Kansas total less Metropolitan Areas as defined by the Office of Management and Budget (OMB; released 3/6/2020). Per 1000: For nonmoney amounts, Per 1000=(county value / county population for the same year as the data) x 1000. \$ Per capita=(county value / county population for the same year as the data). Value= . indicates missing or suppressed data or value not calculated.

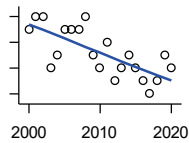
Business

ESTABLISHMENTS: UTILITIES



U.S. Census Bureau, County Business Patterns. Beginning with the 2017 data, any tabulation with fewer than 3 establishments were omitted from the release. Data for these establishments are included in the broader total.

Year	County	State of Kansas	Non Metro Kansas	County Rank	Per 1000 or \$ Per Capita
2000	2	274	192	68	0.3
2001	2	290	204	70	0.3
2002	1	278	195	93	0.2
2003	1	268	180	90	0.2
2004	2	247	164	59	0.3
2005	2	254	172	57	0.3
2006	2	248	169	58	0.3
2007	3	222	156	33	0.5
2008	4	244	166	20	0.6
2009	3	222	152	32	0.5
2010	3	197	129	25	0.5
2011	3	230	156	31	0.5
2012	3	232	156	30	0.5
2013	3	234	159	29	0.5
2014	2	232	160	58	0.3
2015	2	237	165	59	0.3
2016	2	245	171	60	0.3



ESTABLISHMENTS: CONSTRUCTION

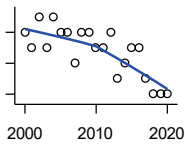
U.S. Census Bureau, County Business Patterns. Beginning with the 2017 data, any tabulation with fewer than 3 establishments were omitted from the release. Data for these establishments are included in the broader total.

Year	County	State of Kansas	Non Metro Kansas	County Rank	Per 1000 or \$ Per Capita
2000	17	7,703	2,616	65	2.6
2001	18	7,449	2,520	65	2.8
2002	18	7,519	2,482	63	2.8
2003	14	7,722	2,521	70	2.2
2004	15	7,887	2,518	66	2.3
2005	17	8,032	2,515	65	2.7
2006	17	8,031	2,494	63	2.6
2007	17	8,057	2,547	65	2.6
2008	18	7,831	2,522	62	2.8
2009	15	7,342	2,452	69	2.3
2010	14	7,064	2,394	69	2.2
2011	16	6,774	2,361	66	2.5
2012	13	6,741	2,393	72	2.0
2013	14	6,802	2,394	70	2.2
2014	15	6,920	2,383	72	2.4
2015	14	7,014	2,377	72	2.2
2016	13	6,988	2,343	73	2.1
2017	12	7,031	2,316	75	1.9
2018	13	7,124	2,285	70	2.1
2019	15	7,060	2,242	65	2.5
2020	14	7,089	2,249	64	2.2

County: county value. Kansas: state value. County Rank: highest county value ranked #1. (\$000): thousands of dollars. Nonmetro Kansas: Kansas total less Metropolitan Areas as defined by the Office of Management and Budget (OMB; released 3/6/2020). Per 1000: For nonmoney amounts, Per 1000=(county value / county population for the same year as the data) x 1000. \$ Per capita=(county value / county population for the same year as the data). Value= . indicates missing or suppressed data or value not calculated.

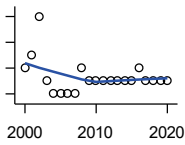
Business

**ESTABLISHMENTS:
MANUFACTURING**



U.S. Census Bureau, County Business Patterns. Beginning with the 2017 data, any tabulation with fewer than 3 establishments were omitted from the release. Data for these establishments are included in the broader total.

Year	County	State of Kansas	Non Metro Kansas	County Rank	Per 1000 or \$ Per Capita
2000	10	3,229	1,316	50	1.5
2001	9	3,240	1,323	56	1.4
2002	11	3,181	1,289	47	1.7
2003	9	3,159	1,291	54	1.4
2004	11	3,179	1,313	44	1.7
2005	10	3,128	1,278	52	1.6
2006	10	3,165	1,290	51	1.5
2007	8	3,184	1,316	61	1.2
2008	10	3,171	1,297	51	1.5
2009	10	3,026	1,240	48	1.6
2010	9	2,955	1,222	52	1.4
2011	9	2,877	1,193	53	1.4
2012	10	2,889	1,197	48	1.5
2013	7	2,836	1,165	64	1.1
2014	8	2,831	1,168	54	1.3
2015	9	2,817	1,161	54	1.4
2016	9	2,791	1,150	54	1.4
2017	7	2,760	1,147	60	1.1
2018	6	2,725	1,126	72	1.0
2019	6	2,695	1,111	71	1.0
2020	6	2,673	1,103	70	0.9



**ESTABLISHMENTS: WHOLESALE
TRADE**

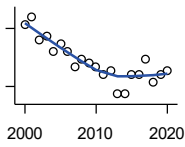
U.S. Census Bureau, County Business Patterns. Beginning with the 2017 data, any tabulation with fewer than 3 establishments were omitted from the release. Data for these establishments are included in the broader total.

Year	County	State of Kansas	Non Metro Kansas	County Rank	Per 1000 or \$ Per Capita
2000	10	4,876	1,776	79	1.5
2001	11	4,811	1,769	72	1.7
2002	14	4,719	1,750	61	2.2
2003	9	4,590	1,637	78	1.4
2004	8	4,553	1,634	88	1.2
2005	8	4,541	1,618	84	1.2
2006	8	4,517	1,596	83	1.2
2007	8	4,555	1,629	87	1.2
2008	10	4,501	1,622	76	1.5
2009	9	4,437	1,614	81	1.4
2010	9	4,432	1,612	79	1.4
2011	9	4,400	1,660	79	1.4
2012	9	4,563	1,755	86	1.4
2013	9	4,501	1,741	85	1.4
2014	9	4,497	1,746	83	1.4
2015	9	4,459	1,755	84	1.4
2016	10	4,457	1,732	78	1.6
2017	9	4,436	1,774	83	1.4
2018	9	4,330	1,727	83	1.5
2019	9	4,291	1,713	82	1.5
2020	9	4,191	1,677	83	1.4

County: county value. Kansas: state value. County Rank: highest county value ranked #1. (\$000): thousands of dollars. Nonmetro Kansas: Kansas total less Metropolitan Areas as defined by the Office of Management and Budget (OMB; released 3/6/2020). Per 1000: For nonmoney amounts, Per 1000=(county value / county population for the same year as the data) x 1000. \$ Per capita=(county value / county population for the same year as the data). Value= . indicates missing or suppressed data or value not calculated.

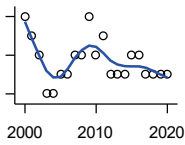
Business

ESTABLISHMENTS: RETAIL TRADE



U.S. Census Bureau, County Business Patterns. Beginning with the 2017 data, any tabulation with fewer than 3 establishments were omitted from the release. Data for these establishments are included in the broader total.

Year	County	State of Kansas	Non Metro Kansas	County Rank	Per 1000 or \$ Per Capita
2000	41	12,261	5,240	56	6.3
2001	43	12,206	5,207	54	6.6
2002	37	11,980	5,082	62	5.8
2003	38	11,834	5,049	61	5.9
2004	34	11,748	4,967	62	5.3
2005	36	11,562	4,834	58	5.6
2006	34	11,367	4,702	61	5.3
2007	30	11,306	4,653	66	4.6
2008	32	10,978	4,494	60	4.9
2009	31	10,760	4,372	63	4.8
2010	30	10,727	4,346	65	4.6
2011	28	10,655	4,289	68	4.3
2012	29	10,585	4,202	63	4.5
2013	23	10,433	4,147	70	3.6
2014	23	10,391	4,070	69	3.6
2015	28	10,327	4,061	63	4.4
2016	28	10,197	3,965	63	4.4
2017	32	10,074	3,885	53	5.1
2018	26	9,866	3,797	64	4.2
2019	28	9,762	3,750	59	4.6
2020	29	9,591	3,666	55	4.5



ESTABLISHMENTS: TRANSPORTATION & WAREHOUSING

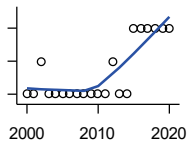
U.S. Census Bureau, County Business Patterns. Beginning with the 2017 data, any tabulation with fewer than 3 establishments were omitted from the release. Data for these establishments are included in the broader total.

Year	County	State of Kansas	Non Metro Kansas	County Rank	Per 1000 or \$ Per Capita
2000	6	2,474	1,293	88	0.9
2001	5	2,463	1,298	90	0.8
2002	4	2,461	1,278	96	0.6
2003	2	2,576	1,297	103	0.3
2004	2	2,651	1,324	103	0.3
2005	3	2,632	1,326	101	0.5
2006	3	2,626	1,295	100	0.5
2007	4	2,664	1,314	97	0.6
2008	4	2,675	1,329	92	0.6
2009	6	2,635	1,313	87	0.9
2010	4	2,615	1,313	93	0.6
2011	5	2,579	1,285	91	0.8
2012	3	2,519	1,243	99	0.5
2013	3	2,492	1,226	97	0.5
2014	3	2,518	1,240	99	0.5
2015	4	2,554	1,257	94	0.6
2016	4	2,567	1,241	93	0.6
2017	3	2,640	1,245	101	0.5
2018	3	2,627	1,238	101	0.5
2019	3	2,615	1,209	100	0.5
2020	3	2,589	1,179	99	0.5

County: county value. Kansas: state value. County Rank: highest county value ranked #1. (\$000): thousands of dollars. Nonmetro Kansas: Kansas total less Metropolitan Areas as defined by the Office of Management and Budget (OMB; released 3/6/2020). Per 1000: For nonmoney amounts, Per 1000=(county value / county population for the same year as the data) x 1000. \$ Per capita=(county value / county population for the same year as the data). Value= . indicates missing or suppressed data or value not calculated.

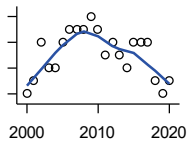
Business

ESTABLISHMENTS: INFORMATION



U.S. Census Bureau, County Business Patterns. Beginning with the 2017 data, any tabulation with fewer than 3 establishments were omitted from the release. Data for these establishments are included in the broader total.

Year	County	State of Kansas	Non Metro Kansas	County Rank	Per 1000 or \$ Per Capita
2000	4	1,542	578	75	0.6
2001	4	1,556	566	73	0.6
2002	5	1,517	551	59	0.8
2003	4	1,516	564	67	0.6
2004	4	1,518	556	65	0.6
2005	4	1,519	536	64	0.6
2006	4	1,549	559	68	0.6
2007	4	1,504	527	63	0.6
2008	4	1,468	522	61	0.6
2009	4	1,420	510	59	0.6
2010	4	1,437	527	61	0.6
2011	4	1,428	537	63	0.6
2012	5	1,387	515	55	0.8
2013	4	1,337	487	61	0.6
2014	4	1,335	496	61	0.6
2015	6	1,359	510	45	1.0
2016	6	1,431	537	47	1.0
2017	6	1,439	.	49	1.0
2018	6	1,407	.	48	1.0
2019	6	1,422	.	49	1.0
2020	6	1,424	.	49	0.9



ESTABLISHMENTS: FINANCE & INSURANCE

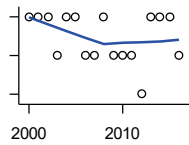
U.S. Census Bureau, County Business Patterns. Beginning with the 2017 data, any tabulation with fewer than 3 establishments were omitted from the release. Data for these establishments are included in the broader total.

Year	County	State of Kansas	Non Metro Kansas	County Rank	Per 1000 or \$ Per Capita
2000	12	5,209	1,848	70	1.8
2001	13	5,178	1,828	65	2.0
2002	16	5,496	1,911	57	2.5
2003	14	5,569	1,907	63	2.2
2004	14	5,572	1,913	64	2.2
2005	16	5,708	1,964	59	2.5
2006	17	5,877	1,976	51	2.6
2007	17	6,017	2,030	52	2.6
2008	17	6,010	2,023	51	2.6
2009	18	5,933	1,994	48	2.8
2010	17	5,872	1,975	51	2.6
2011	15	5,854	1,985	59	2.3
2012	16	5,993	2,024	56	2.5
2013	15	5,903	1,993	59	2.4
2014	14	5,894	2,000	66	2.2
2015	16	5,932	1,998	55	2.5
2016	16	6,022	2,021	59	2.5
2017	16	6,026	2,007	58	2.5
2018	13	6,023	1,997	66	2.1
2019	12	5,953	1,977	67	2.0
2020	13	5,926	1,969	65	2.0

County: county value. Kansas: state value. County Rank: highest county value ranked #1. (\$000): thousands of dollars. Nonmetro Kansas: Kansas total less Metropolitan Areas as defined by the Office of Management and Budget (OMB; released 3/6/2020). Per 1000: For nonmoney amounts, Per 1000=(county value / county population for the same year as the data) x 1000. \$ Per capita=(county value / county population for the same year as the data). Value= . indicates missing or suppressed data or value not calculated.

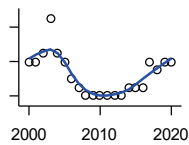
Business

ESTABLISHMENTS: REAL ESTATE, RENTAL, AND LEASING



U.S. Census Bureau, County Business Patterns. Beginning with the 2017 data, any tabulation with fewer than 3 establishments were omitted from the release. Data for these establishments are included in the broader total.

Year	County	State of Kansas	Non Metro Kansas	County Rank	Per 1000 or \$ Per Capita
2000	3	2,733	687	68	0.5
2001	3	2,849	724	67	0.5
2002	3	2,952	735	65	0.5
2003	2	3,007	727	71	0.3
2004	3	3,108	713	62	0.5
2005	3	3,203	727	61	0.5
2006	2	3,268	736	69	0.3
2007	2	3,286	721	71	0.3
2008	3	3,239	738	61	0.5
2009	2	3,122	723	70	0.3
2010	2	3,050	708	75	0.3
2011	2	3,002	692	74	0.3
2012	1	2,981	691	88	0.2
2013	3	3,046	717	64	0.5
2014	3	3,135	738	65	0.5
2015	3	3,179	744	65	0.5
2016	2	3,293	757	77	0.3



ESTABLISHMENTS: PROFESSIONAL, SCIENTIFIC, AND TECHNICAL SERVICES

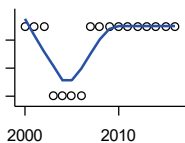
U.S. Census Bureau, County Business Patterns. Beginning with the 2017 data, any tabulation with fewer than 3 establishments were omitted from the release. Data for these establishments are included in the broader total.

Year	County	State of Kansas	Non Metro Kansas	County Rank	Per 1000 or \$ Per Capita
2000	10	6,424	1,690	67	1.5
2001	10	6,492	1,665	68	1.5
2002	11	6,719	1,704	67	1.7
2003	15	6,793	1,735	55	2.3
2004	11	7,025	1,730	66	1.7
2005	10	7,087	1,711	66	1.6
2006	8	7,231	1,736	77	1.2
2007	7	7,329	1,729	83	1.1
2008	6	7,133	1,671	89	0.9
2009	6	7,122	1,676	89	0.9
2010	6	7,172	1,680	88	0.9
2011	6	7,115	1,668	89	0.9
2012	6	7,122	1,681	91	0.9
2013	6	7,129	1,698	88	0.9
2014	7	7,206	1,682	84	1.1
2015	7	7,184	1,687	83	1.1
2016	7	7,146	1,659	81	1.1
2017	10	7,224	1,679	65	1.6
2018	9	7,138	1,655	67	1.5
2019	10	7,119	.	65	1.6
2020	10	7,117	.	66	1.6

County: county value. Kansas: state value. County Rank: highest county value ranked #1. (\$000): thousands of dollars. Nonmetro Kansas: Kansas total less Metropolitan Areas as defined by the Office of Management and Budget (OMB; released 3/6/2020). Per 1000: For nonmoney amounts, Per 1000=(county value / county population for the same year as the data) x 1000. \$ Per capita=(county value / county population for the same year as the data). Value= . indicates missing or suppressed data or value not calculated.

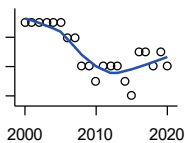
Business

ESTABLISHMENTS: MANAGEMENT OF COMPANIES AND ENTERPRISES



U.S. Census Bureau, County Business Patterns. Beginning with the 2017 data, any tabulation with fewer than 3 establishments were omitted from the release. Data for these establishments are included in the broader total.

Year	County	State of Kansas	Non Metro Kansas	County Rank	Per 1000 or \$ Per Capita
2000	2	622	145	37	0.3
2001	2	593	141	38	0.3
2002	2	597	152	41	0.3
2003	1	561	135	59	0.2
2004	1	569	133	57	0.2
2005	1	543	127	56	0.2
2006	1	542	131	57	0.2
2007	2	550	133	39	0.3
2008	2	553	139	42	0.3
2009	2	575	136	41	0.3
2010	2	567	131	40	0.3
2011	2	552	134	39	0.3
2012	2	593	135	38	0.3
2013	2	590	135	37	0.3
2014	2	603	136	38	0.3
2015	2	613	140	39	0.3
2016	2	655	171	39	0.3



ESTABLISHMENTS: ADMIN, SUPPORT, WASTE MGMT., AND REMEDIATION

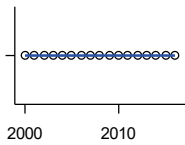
U.S. Census Bureau, County Business Patterns. Beginning with the 2017 data, any tabulation with fewer than 3 establishments were omitted from the release. Data for these establishments are included in the broader total.

Year	County	State of Kansas	Non Metro Kansas	County Rank	Per 1000 or \$ Per Capita
2000	8	3,307	871	46	1.2
2001	8	3,421	913	49	1.2
2002	8	3,232	882	47	1.2
2003	8	3,189	858	44	1.2
2004	8	3,301	891	46	1.2
2005	8	3,342	896	43	1.2
2006	7	3,395	886	51	1.1
2007	7	3,522	921	50	1.1
2008	5	3,587	932	64	0.8
2009	5	3,505	904	67	0.8
2010	4	3,494	897	78	0.6
2011	5	3,447	903	69	0.8
2012	5	3,462	891	65	0.8
2013	5	3,489	904	65	0.8
2014	4	3,569	933	75	0.6
2015	3	3,630	964	80	0.5
2016	6	3,705	987	60	1.0
2017	6	3,741	991	64	1.0
2018	5	3,740	983	67	0.8
2019	6	3,762	991	61	1.0
2020	5	3,807	989	67	0.8

County: county value. Kansas: state value. County Rank: highest county value ranked #1. (\$000): thousands of dollars. Nonmetro Kansas: Kansas total less Metropolitan Areas as defined by the Office of Management and Budget (OMB; released 3/6/2020). Per 1000: For nonmoney amounts, Per 1000=(county value / county population for the same year as the data) x 1000. \$ Per capita=(county value / county population for the same year as the data). Value= . indicates missing or suppressed data or value not calculated.

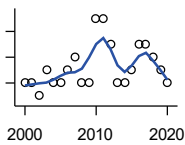
Business

ESTABLISHMENTS: EDUCATIONAL SERVICES



U.S. Census Bureau, County Business Patterns. Beginning with the 2017 data, any tabulation with fewer than 3 establishments were omitted from the release. Data for these establishments are included in the broader total.

Year	County	State of Kansas	Non Metro Kansas	County Rank	Per 1000 or \$ Per Capita
2000	0	604	155	105	0.0
2001	0	625	168	105	0.0
2002	0	666	165	105	0.0
2003	0	663	173	105	0.0
2004	0	690	173	105	0.0
2005	0	699	168	105	0.0
2006	0	698	175	105	0.0
2007	0	691	165	105	0.0
2008	0	692	158	105	0.0
2009	0	690	150	105	0.0
2010	0	700	149	105	0.0
2011	0	711	150	105	0.0
2012	0	724	145	105	0.0
2013	0	735	153	105	0.0
2014	0	722	152	105	0.0
2015	0	754	152	105	0.0
2016	0	728	150	105	0.0



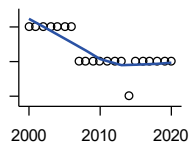
ESTABLISHMENTS: HEALTH CARE AND SOCIAL ASSISTANCE

U.S. Census Bureau, County Business Patterns. Beginning with the 2017 data, any tabulation with fewer than 3 establishments were omitted from the release. Data for these establishments are included in the broader total.

Year	County	State of Kansas	Non Metro Kansas	County Rank	Per 1000 or \$ Per Capita
2000	20	6,564	2,591	55	3.1
2001	20	6,636	2,590	54	3.1
2002	19	7,052	2,777	57	3.0
2003	21	7,129	2,792	52	3.3
2004	20	7,239	2,813	55	3.1
2005	20	7,412	2,855	55	3.1
2006	21	7,477	2,860	54	3.2
2007	22	7,661	2,864	55	3.4
2008	20	7,651	2,810	56	3.1
2009	20	7,696	2,787	55	3.1
2010	25	7,751	2,830	52	3.8
2011	25	7,804	2,817	51	3.9
2012	23	7,973	2,793	49	3.6
2013	20	7,877	2,729	53	3.1
2014	20	7,809	2,686	52	3.2
2015	21	8,103	2,692	51	3.3
2016	23	8,315	2,678	48	3.6
2017	23	8,136	2,646	48	3.7
2018	22	8,126	2,632	49	3.6
2019	21	8,184	2,587	51	3.4
2020	20	8,290	2,571	50	3.1

County: county value. Kansas: state value. County Rank: highest county value ranked #1. (\$000): thousands of dollars. Nonmetro Kansas: Kansas total less Metropolitan Areas as defined by the Office of Management and Budget (OMB; released 3/6/2020). Per 1000: For nonmoney amounts, Per 1000=(county value / county population for the same year as the data) x 1000. \$ Per capita=(county value / county population for the same year as the data). Value= . indicates missing or suppressed data or value not calculated.

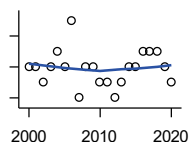
Business



ESTABLISHMENTS: ARTS, ENTERTAINMENT, AND RECREATION

U.S. Census Bureau, County Business Patterns. Beginning with the 2017 data, any tabulation with fewer than 3 establishments were omitted from the release. Data for these establishments are included in the broader total.

Year	County	State of Kansas	Non Metro Kansas	County Rank	Per 1000 or \$ Per Capita
2000	4	981	419	53	0.6
2001	4	1,009	433	52	0.6
2002	4	1,054	441	55	0.6
2003	4	1,045	443	55	0.6
2004	4	1,082	445	57	0.6
2005	4	1,109	446	61	0.6
2006	4	1,080	445	58	0.6
2007	3	1,092	444	71	0.5
2008	3	1,062	423	68	0.5
2009	3	1,063	421	67	0.5
2010	3	1,018	406	65	0.5
2011	3	997	387	67	0.5
2012	3	1,000	388	65	0.5
2013	3	1,009	377	64	0.5
2014	2	1,030	365	83	0.3
2015	3	1,031	357	62	0.5
2016	3	1,060	366	64	0.5
2017	3	1,096	.	62	0.5
2018	3	1,088	.	61	0.5
2019	3	1,087	.	60	0.5
2020	3	1,064	.	61	0.5



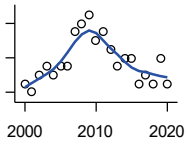
ESTABLISHMENTS: ACCOMMODATION AND FOOD SERVICES

U.S. Census Bureau, County Business Patterns. Beginning with the 2017 data, any tabulation with fewer than 3 establishments were omitted from the release. Data for these establishments are included in the broader total.

Year	County	State of Kansas	Non Metro Kansas	County Rank	Per 1000 or \$ Per Capita
2000	14	5,536	2,213	61	2.1
2001	14	5,551	2,173	62	2.2
2002	13	5,610	2,174	67	2.0
2003	14	5,635	2,188	59	2.2
2004	15	5,681	2,160	59	2.3
2005	14	5,776	2,170	61	2.2
2006	17	5,745	2,132	55	2.6
2007	12	5,877	2,095	65	1.8
2008	14	5,843	2,052	61	2.2
2009	14	5,794	2,029	62	2.2
2010	13	5,898	2,046	62	2.0
2011	13	5,958	2,067	63	2.0
2012	12	5,951	2,046	66	1.9
2013	13	6,061	2,070	62	2.0
2014	14	5,985	2,024	58	2.2
2015	14	6,034	2,063	60	2.2
2016	15	6,126	2,094	60	2.4
2017	15	6,250	2,123	60	2.4
2018	15	6,256	2,128	55	2.4
2019	14	6,231	2,131	57	2.3
2020	13	6,206	2,131	62	2.0

County: county value. Kansas: state value. County Rank: highest county value ranked #1. (\$000): thousands of dollars. Nonmetro Kansas: Kansas total less Metropolitan Areas as defined by the Office of Management and Budget (OMB; released 3/6/2020). Per 1000: For nonmoney amounts, Per 1000=(county value / county population for the same year as the data) x 1000. \$ Per capita=(county value / county population for the same year as the data). Value= . indicates missing or suppressed data or value not calculated.

Business



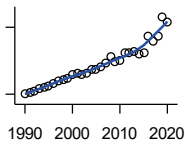
ESTABLISHMENTS: OTHER SERVICES

U.S. Census Bureau, County Business Patterns. Beginning with the 2017 data, any tabulation with fewer than 3 establishments were omitted from the release. Data for these establishments are included in the broader total.

Year	County	State of Kansas	Non Metro Kansas	County Rank	Per 1000 or \$ Per Capita
2000	25	8,423	3,636	65	3.8
2001	24	8,310	3,614	68	3.7
2002	26	8,552	3,658	64	4.1
2003	27	8,411	3,605	60	4.2
2004	26	8,343	3,597	61	4.0
2005	27	8,321	3,571	59	4.2
2006	27	8,225	3,490	58	4.2
2007	31	8,355	3,534	52	4.8
2008	32	8,104	3,406	49	4.9
2009	33	8,040	3,405	49	5.1
2010	30	7,998	3,379	54	4.6
2011	31	7,883	3,294	54	4.8
2012	29	7,913	3,303	55	4.5
2013	27	7,947	3,290	57	4.2
2014	28	7,943	3,285	54	4.4
2015	28	7,869	3,255	55	4.4
2016	25	7,839	3,204	60	4.0
2017	26	7,873	3,189	58	4.1
2018	25	7,853	3,176	60	4.1
2019	28	7,834	3,138	56	4.6
2020	25	7,787	3,073	58	3.9

County: county value. Kansas: state value. County Rank: highest county value ranked #1. (\$000): thousands of dollars. Nonmetro Kansas: Kansas total less Metropolitan Areas as defined by the Office of Management and Budget (OMB; released 3/6/2020). Per 1000: For nonmoney amounts, Per 1000=(county value / county population for the same year as the data) x 1000. \$ Per capita=(county value / county population for the same year as the data). Value= . indicates missing or suppressed data or value not calculated.

Business



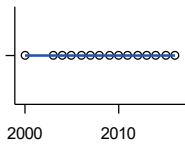
**TOTAL ANNUAL PAYROLL (\$000)
COUNTY BUSINESS PATTERNS**

U.S. Census Bureau, County Business Patterns. Beginning with the 2017 data, any tabulation with fewer than 3 establishments were omitted from the release. Data for these establishments are included in the broader total.

Year	County	State of Kansas	Non Metro Kansas	County Rank	Per 1000 or \$ Per Capita
1990	20,697	17,487,316	4,442,429	58	3,142.6
1991	21,523	18,162,326	4,612,616	57	3,235.6
1992	23,270	19,244,346	4,882,060	58	3,536.5
1993	25,034	20,087,190	5,182,780	57	3,789.6
1994	25,640	21,201,652	5,541,423	58	3,900.8
1995	27,484	22,825,920	5,875,310	57	4,198.6
1996	29,501	24,613,884	6,198,398	57	4,508.1
1997	32,160	26,787,098	6,599,061	55	4,919.7
1998	33,390	28,747,576	6,871,794	56	5,117.2
1999	34,462	30,600,434	7,121,961	56	5,312.5
2000	37,829	31,990,762	7,520,424	55	5,797.5
2001	38,543	33,303,992	7,598,165	55	5,950.7
2002	37,125	33,152,962	7,572,002	55	5,783.6
2003	39,229	34,040,944	7,726,561	55	6,091.5
2004	41,859	35,725,812	8,303,779	54	6,502.9
2005	42,012	36,646,064	8,586,986	55	6,560.3
2006	44,333	39,251,388	9,178,947	58	6,857.4
2007	48,080	42,022,753	.	56	7,393.5
2008	53,378	43,984,689	.	51	8,248.8
2009	48,775	42,146,866	.	54	7,583.2
2010	49,953	42,686,303	10,294,015	54	7,688.6
2011	56,618	43,733,944	.	51	8,763.0
2012	57,035	45,608,072	11,222,183	53	8,826.2
2013	57,816	47,715,601	11,446,751	54	9,083.4
2014	56,127	49,712,832	11,957,931	57	8,845.9
2015	57,400	51,259,676	11,975,718	58	9,108.2
2016	72,605	51,016,318	12,148,646	48	11,520.9
2017	67,185	52,754,605	12,448,592	50	10,691.4
2018	71,526	55,087,460	12,810,270	49	11,605.7
2019	89,349	57,272,387	13,123,288	44	14,642.6
2020	84,126	58,374,388	14,007,955	47	13,194.2

County: county value. Kansas: state value. County Rank: highest county value ranked #1. (\$000): thousands of dollars. Nonmetro Kansas: Kansas total less Metropolitan Areas as defined by the Office of Management and Budget (OMB; released 3/6/2020). Per 1000: For nonmoney amounts, Per 1000=(county value / county population for the same year as the data) x 1000. \$ Per capita=(county value / county population for the same year as the data). Value= . indicates missing or suppressed data or value not calculated.

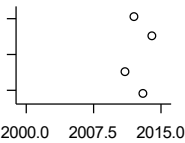
Business



**TOTAL ANNUAL PAYROLL(\$000):
FORESTRY, FISHING, HUNTING, AND
AG SUPPORT**

U.S. Census Bureau, County Business Patterns. Beginning with the 2017 data, any tabulation with fewer than 3 establishments were omitted from the release. Data for these establishments are included in the broader total.

Year	County	State of Kansas	Non Metro Kansas	County Rank	Per 1000 or \$ Per Capita
2000	0	13,551	.	.	0.0
2001
2002	.	16,528	.	.	.
2003	0	17,247	.	.	0.0
2004	0	17,552	.	.	0.0
2005	0	16,298	.	.	0.0
2006	0	17,908	.	.	0.0
2007	0	22,199	.	.	0.0
2008	0	21,359	.	.	0.0
2009	0	22,466	.	.	0.0
2010	0	22,753	.	.	0.0
2011	0	23,320	.	.	0.0
2012	0	27,492	.	.	0.0
2013	0	30,360	.	.	0.0
2014	0	34,862	.	.	0.0
2015	0	35,980	.	.	0.0
2016	0	31,488	.	.	0.0



**TOTAL ANNUAL PAYROLL(\$000):
MINING**

U.S. Census Bureau, County Business Patterns. Beginning with the 2017 data, any tabulation with fewer than 3 establishments were omitted from the release. Data for these establishments are included in the broader total.

Year	County	State of Kansas	Non Metro Kansas	County Rank	Per 1000 or \$ Per Capita
2000	.	240,079	.	.	.
2001	.	273,838	.	.	.
2002	.	262,277	.	.	.
2003	.	290,652	.	.	.
2004	.	326,997	.	.	.
2005	.	381,069	.	.	.
2006	.	482,102	.	.	.
2007	.	551,751	.	.	.
2008	.	620,446	.	.	.
2009	.	465,070	.	.	.
2010	.	485,841	.	.	.
2011	6,807	541,536	.	.	1,053.6
2012	7,112	600,402	.	.	1,100.6
2013	6,680	599,788	.	.	1,049.5
2014	7,006	678,673	.	.	1,104.2
2015	.	552,658	.	.	.

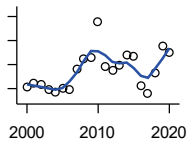
County: county value. Kansas: state value. County Rank: highest county value ranked #1. (\$000): thousands of dollars. Nonmetro Kansas: Kansas total less Metropolitan Areas as defined by the Office of Management and Budget (OMB; released 3/6/2020). Per 1000: For nonmoney amounts, Per 1000=(county value / county population for the same year as the data) x 1000. \$ Per capita=(county value / county population for the same year as the data). Value= . indicates missing or suppressed data or value not calculated.

Business

**TOTAL ANNUAL PAYROLL(\$000):
UTILITIES**

U.S. Census Bureau, County Business Patterns. Beginning with the 2017 data, any tabulation with fewer than 3 establishments were omitted from the release. Data for these establishments are included in the broader total.

Year	County	State of Kansas	Non Metro Kansas	County Rank	Per 1000 or \$ Per Capita
2000	.	410,313	.	.	.
2001	.	452,057	.	.	.
2002	.	377,559	.	.	.
2003	.	378,157	.	.	.
2004	.	377,809	.	.	.
2005	.	429,864	.	.	.
2006	.	443,999	.	.	.
2007	.	480,068	.	.	.
2008	.	541,066	.	.	.
2009	.	563,373	.	.	.
2010	.	512,628	.	.	.
2011	.	653,229	.	.	.
2012	.	625,451	.	.	.
2013	.	625,347	.	.	.
2014	.	610,960	.	.	.
2015	.	668,559	.	.	.



**TOTAL ANNUAL PAYROLL(\$000):
CONSTRUCTION**

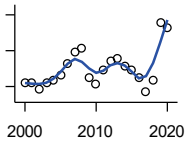
U.S. Census Bureau, County Business Patterns. Beginning with the 2017 data, any tabulation with fewer than 3 establishments were omitted from the release. Data for these establishments are included in the broader total.

Year	County	State of Kansas	Non Metro Kansas	County Rank	Per 1000 or \$ Per Capita
2000	2,031	2,256,057	.	.	311.3
2001	2,114	2,320,652	.	.	326.4
2002	2,082	2,302,229	.	.	324.3
2003	1,982	2,282,021	.	.	307.8
2004	1,914	2,302,854	.	.	297.3
2005	1,998	2,465,977	.	.	312.0
2006	1,991	2,700,351	.	.	308.0
2007	2,404	2,772,168	.	.	369.7
2008	2,615	2,950,073	.	.	404.1
2009	2,636	2,709,864	.	.	409.8
2010	3,393	2,553,555	.	.	522.2
2011	2,446	2,550,355	.	.	378.6
2012	2,374	2,733,284	.	.	367.4
2013	2,485	2,866,801	.	.	390.4
2014	2,698	3,135,814	.	.	425.2
2015	2,676	3,270,952	.	.	424.6
2016	2,061	3,328,610	.	.	327.0
2017	1,890	3,568,505	.	.	300.8
2018	2,332	3,806,196	.	.	378.4
2019	2,874	3,879,912	.	.	471.0
2020	2,755	3,983,029	.	.	432.1

County: county value. Kansas: state value. County Rank: highest county value ranked #1. (\$000): thousands of dollars. Nonmetro Kansas: Kansas total less Metropolitan Areas as defined by the Office of Management and Budget (OMB; released 3/6/2020). Per 1000: For nonmoney amounts, Per 1000=(county value / county population for the same year as the data) x 1000. \$ Per capita=(county value / county population for the same year as the data). Value= . indicates missing or suppressed data or value not calculated.

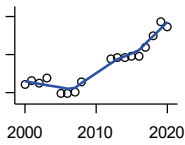
Business

**TOTAL ANNUAL PAYROLL(\$000):
MANUFACTURING**



U.S. Census Bureau, County Business Patterns. Beginning with the 2017 data, any tabulation with fewer than 3 establishments were omitted from the release. Data for these establishments are included in the broader total.

Year	County	State of Kansas	Non Metro Kansas	County Rank	Per 1000 or \$ Per Capita
2000	10,440	7,015,414	.	.	1,600.0
2001	10,485	7,301,706	.	.	1,618.8
2002	9,770	6,802,605	.	.	1,522.0
2003	10,464	6,691,611	.	.	1,624.8
2004	10,664	6,985,656	.	.	1,656.7
2005	11,327	7,221,614	.	.	1,768.7
2006	12,510	7,621,873	.	.	1,935.0
2007	13,876	7,873,359	.	.	2,133.8
2008	14,263	8,441,541	.	.	2,204.1
2009	10,965	7,477,838	.	.	1,704.8
2010	10,302	7,556,955	.	.	1,585.7
2011	11,873	7,747,934	.	.	1,837.6
2012	12,870	7,704,851	.	.	1,991.6
2013	13,136	8,365,542	.	.	2,063.8
2014	12,336	8,787,306	.	.	1,944.2
2015	11,883	9,052,105	.	.	1,885.6
2016	11,018	8,868,744	.	.	1,748.3
2017	9,366	9,075,793	.	.	1,490.5
2018	10,692	9,481,652	.	.	1,734.9
2019	17,125	10,171,575	.	.	2,806.5
2020	16,626	9,744,825	.	.	2,607.6



**TOTAL ANNUAL PAYROLL(\$000):
WHOLESALE TRADE**

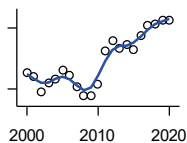
U.S. Census Bureau, County Business Patterns. Beginning with the 2017 data, any tabulation with fewer than 3 establishments were omitted from the release. Data for these establishments are included in the broader total.

Year	County	State of Kansas	Non Metro Kansas	County Rank	Per 1000 or \$ Per Capita
2000	1,405	2,332,755	.	.	215.3
2001	1,622	2,283,169	.	.	250.4
2002	1,528	2,107,653	.	.	238.0
2003	1,754	2,622,701	.	.	272.4
2004	.	2,663,196	.	.	.
2005	934	2,345,990	.	.	145.8
2006	955	2,592,211	.	.	147.7
2007	998	2,682,542	.	.	153.5
2008	1,553	3,078,655	.	.	240.0
2009	.	2,940,949	.	.	.
2010	.	3,097,628	.	.	.
2011	.	3,305,811	.	.	.
2012	2,774	3,339,997	.	.	429.3
2013	2,836	3,460,512	.	.	445.6
2014	2,812	3,712,075	.	.	443.2
2015	2,877	3,760,189	.	.	456.5
2016	2,936	3,738,207	.	.	465.9
2017	3,412	3,822,730	.	.	543.0
2018	4,007	3,814,353	.	.	650.2
2019	4,756	4,025,802	.	.	779.4
2020	4,484	4,224,666	.	.	703.3

County: county value. Kansas: state value. County Rank: highest county value ranked #1. (\$000): thousands of dollars. Nonmetro Kansas: Kansas total less Metropolitan Areas as defined by the Office of Management and Budget (OMB; released 3/6/2020). Per 1000: For nonmoney amounts, Per 1000=(county value / county population for the same year as the data) x 1000. \$ Per capita=(county value / county population for the same year as the data). Value= . indicates missing or suppressed data or value not calculated.

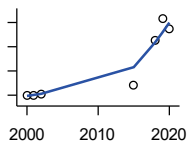
Business

**TOTAL ANNUAL PAYROLL(\$000):
RETAIL TRADE**



U.S. Census Bureau, County Business Patterns. Beginning with the 2017 data, any tabulation with fewer than 3 establishments were omitted from the release. Data for these establishments are included in the broader total.

Year	County	State of Kansas	Non Metro Kansas	County Rank	Per 1000 or \$ Per Capita
2000	2,912	2,747,001	.	.	446.3
2001	2,791	2,813,226	.	.	430.9
2002	2,418	2,854,231	.	.	376.7
2003	2,639	2,773,674	.	.	409.8
2004	2,742	2,847,826	.	.	426.0
2005	2,968	2,952,196	.	.	463.5
2006	2,829	3,126,495	.	.	437.6
2007	2,561	3,201,169	.	.	393.8
2008	2,322	3,261,054	.	.	358.8
2009	2,345	3,232,246	.	.	364.6
2010	2,603	3,321,838	.	.	400.6
2011	3,448	3,384,607	.	.	533.7
2012	3,695	3,409,755	.	.	571.8
2013	3,495	3,483,752	.	.	549.1
2014	3,591	3,617,933	.	.	566.0
2015	3,456	3,712,165	.	.	548.4
2016	3,812	3,826,889	.	.	604.9
2017	4,062	3,797,849	.	.	646.4
2018	4,107	3,818,988	.	.	666.4
2019	4,191	3,908,994	.	.	686.8
2020	4,198	3,984,443	.	.	658.4



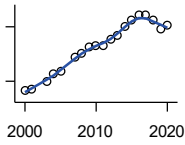
**TOTAL ANNUAL PAYROLL(\$000):
TRANSPORTATION &
WAREHOUSING**

U.S. Census Bureau, County Business Patterns. Beginning with the 2017 data, any tabulation with fewer than 3 establishments were omitted from the release. Data for these establishments are included in the broader total.

Year	County	State of Kansas	Non Metro Kansas	County Rank	Per 1000 or \$ Per Capita
2000	124	1,044,835	.	.	19.0
2001	136	1,089,405	.	.	21.0
2002	180	1,094,636	.	.	28.0
2003	.	1,316,655	.	.	.
2004	.	1,439,800	.	.	.
2005	.	1,393,651	.	.	.
2006	.	1,528,551	.	.	.
2007	.	1,788,267	.	.	.
2008	.	1,722,697	.	.	.
2009	.	1,618,598	.	.	.
2010	.	1,735,761	.	.	.
2011	.	1,739,165	.	.	.
2012	.	1,984,976	.	.	.
2013	.	2,006,261	.	.	.
2014	.	2,097,377	.	.	.
2015	4,101	2,190,072	.	.	650.7
2018	22,548	2,663,188	.	.	3,658.6
2019	31,640	2,879,406	.	.	5,185.2
2020	27,540	2,962,461	.	.	4,319.3

County: county value. Kansas: state value. County Rank: highest county value ranked #1. (\$000): thousands of dollars. Nonmetro Kansas: Kansas total less Metropolitan Areas as defined by the Office of Management and Budget (OMB; released 3/6/2020). Per 1000: For nonmoney amounts, Per 1000=(county value / county population for the same year as the data) x 1000. \$ Per capita=(county value / county population for the same year as the data). Value= . indicates missing or suppressed data or value not calculated.

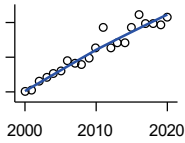
Business



**TOTAL ANNUAL PAYROLL(\$000):
INFORMATION**

U.S. Census Bureau, County Business Patterns. Beginning with the 2017 data, any tabulation with fewer than 3 establishments were omitted from the release. Data for these establishments are included in the broader total.

Year	County	State of Kansas	Non Metro Kansas	County Rank	Per 1000 or \$ Per Capita
2000	1,746	1,923,381	.	.	267.6
2001	1,766	2,218,610	.	.	272.7
2002	.	2,298,108	.	.	.
2003	1,987	2,378,673	.	.	308.5
2004	2,198	2,392,990	.	.	341.5
2005	2,263	2,395,081	.	.	353.4
2006	.	2,586,483	.	.	.
2007	2,647	2,594,138	.	.	407.0
2008	2,769	3,043,244	.	.	427.9
2009	2,959	3,045,570	.	.	460.0
2010	2,990	2,481,580	.	.	460.2
2011	2,991	2,513,805	.	.	462.9
2012	3,139	2,535,555	.	.	485.8
2013	3,277	2,805,017	.	.	514.8
2014	3,526	2,393,609	.	.	555.7
2015	3,670	2,406,323	.	.	582.4
2016	3,823	2,080,211	.	.	606.6
2017	3,829	2,090,021	.	.	609.3
2018	3,674	2,341,543	.	.	596.1
2019	3,424	2,133,891	.	.	561.1
2020	3,542	2,245,204	.	.	555.5



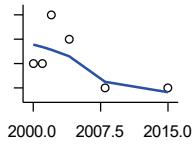
**TOTAL ANNUAL PAYROLL(\$000):
FINANCE & INSURANCE**

U.S. Census Bureau, County Business Patterns. Beginning with the 2017 data, any tabulation with fewer than 3 establishments were omitted from the release. Data for these establishments are included in the broader total.

Year	County	State of Kansas	Non Metro Kansas	County Rank	Per 1000 or \$ Per Capita
2000	1,505	2,083,565	.	.	230.7
2001	1,567	2,129,587	.	.	241.9
2002	1,795	2,414,120	.	.	279.6
2003	1,920	2,608,579	.	.	298.1
2004	2,014	2,676,910	.	.	312.9
2005	2,106	2,786,136	.	.	328.9
2006	2,400	2,928,931	.	.	371.2
2007	2,316	3,096,017	.	.	356.1
2008	2,288	3,322,977	.	.	353.6
2009	2,475	3,206,839	.	.	384.8
2010	2,784	3,211,300	.	.	428.5
2011	3,348	3,404,633	.	.	518.2
2012	2,780	3,611,165	.	.	430.2
2013	2,900	3,896,051	.	.	455.6
2014	2,931	4,044,315	.	.	461.9
2015	3,373	4,113,060	.	.	535.2
2016	3,722	4,180,740	.	.	590.6
2017	3,468	4,258,057	.	.	551.9
2018	3,473	4,682,552	.	.	563.5
2019	3,441	4,814,201	.	.	563.9
2020	3,647	5,288,529	.	.	572.0

County: county value. Kansas: state value. County Rank: highest county value ranked #1. (\$000): thousands of dollars. Nonmetro Kansas: Kansas total less Metropolitan Areas as defined by the Office of Management and Budget (OMB; released 3/6/2020). Per 1000: For nonmoney amounts, Per 1000=(county value / county population for the same year as the data) x 1000. \$ Per capita=(county value / county population for the same year as the data). Value= . indicates missing or suppressed data or value not calculated.

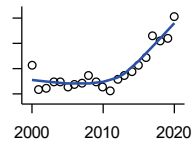
Business



**TOTAL ANNUAL PAYROLL(\$000):
REAL ESTATE, RENTAL, AND
LEASING**

U.S. Census Bureau, County Business Patterns. Beginning with the 2017 data, any tabulation with fewer than 3 establishments were omitted from the release. Data for these establishments are included in the broader total.

Year	County	State of Kansas	Non Metro Kansas	County Rank	Per 1000 or \$ Per Capita
2000	20	360,637	.	.	3.1
2001	20	397,371	.	.	3.1
2002	24	403,695	.	.	3.7
2003	.	437,786	.	.	.
2004	22	430,719	.	.	3.4
2005	.	465,149	.	.	.
2006	.	478,811	.	.	.
2007	.	452,969	.	.	.
2008	18	484,149	.	.	2.8
2009	.	450,884	.	.	.
2010	.	487,255	.	.	.
2011	.	535,120	.	.	.
2012	.	531,039	.	.	.
2013	.	538,796	.	.	.
2014	.	542,307	.	.	.
2015	18	595,030	.	.	2.9



**TOTAL ANNUAL PAYROLL(\$000):
PROFESSIONAL, SCIENTIFIC, AND
TECHNICAL SERVICES**

U.S. Census Bureau, County Business Patterns. Beginning with the 2017 data, any tabulation with fewer than 3 establishments were omitted from the release. Data for these establishments are included in the broader total.

Year	County	State of Kansas	Non Metro Kansas	County Rank	Per 1000 or \$ Per Capita
2000	3,137	2,057,313	.	.	480.8
2001	2,148	2,152,937	.	.	331.6
2002	2,212	2,150,085	.	.	344.6
2003	2,451	2,052,712	.	.	380.6
2004	2,450	2,531,457	.	.	380.6
2005	2,268	2,418,500	.	.	354.2
2006	2,394	2,655,690	.	.	370.3
2007	2,403	2,901,544	.	.	369.5
2008	2,704	2,903,802	.	.	417.9
2009	2,476	3,071,611	.	.	385.0
2010	2,250	3,037,182	.	.	346.3
2011	2,140	3,132,082	.	.	331.2
2012	2,595	3,455,548	.	.	401.6
2013	2,712	3,777,729	.	.	426.1
2014	2,891	3,981,580	.	.	455.6
2015	3,116	4,039,074	.	.	494.4
2016	3,422	4,125,507	.	.	543.0
2017	4,299	4,158,858	.	.	684.1
2018	4,103	4,314,317	.	.	665.7
2019	4,198	4,646,644	.	.	688.0
2020	5,062	4,927,611	.	.	793.9

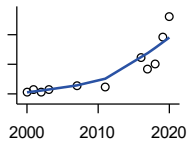
County: county value. Kansas: state value. County Rank: highest county value ranked #1. (\$000): thousands of dollars. Nonmetro Kansas: Kansas total less Metropolitan Areas as defined by the Office of Management and Budget (OMB; released 3/6/2020). Per 1000: For nonmoney amounts, Per 1000=(county value / county population for the same year as the data) x 1000. \$ Per capita=(county value / county population for the same year as the data). Value= . indicates missing or suppressed data or value not calculated.

Business

**TOTAL ANNUAL PAYROLL(\$000):
MANAGEMENT OF COMPANIES AND
ENTERPRISES**

U.S. Census Bureau, County Business Patterns. Beginning with the 2017 data, any tabulation with fewer than 3 establishments were omitted from the release. Data for these establishments are included in the broader total.

Year	County	State of Kansas	Non Metro Kansas	County Rank	Per 1000 or \$ Per Capita
2000	.	1,362,735	.	.	.
2001	.	1,279,253	.	.	.
2002	.	1,311,368	.	.	.
2003	.	1,352,119	.	.	.
2004	.	1,378,891	.	.	.
2005	.	1,510,876	.	.	.
2006	.	1,626,320	.	.	.
2007	.	2,233,654	.	.	.
2008	.	1,848,656	.	.	.
2009	.	1,601,158	.	.	.
2010	.	2,003,048	.	.	.
2011	.	1,677,619	.	.	.
2012	.	1,834,430	.	.	.
2013	.	1,938,100	.	.	.
2014	.	2,117,232	.	.	.
2015	.	2,451,126	.	.	.



**TOTAL ANNUAL PAYROLL(\$000):
ADMIN, SUPPORT, WASTE MGMT.,
AND REMEDIATION**

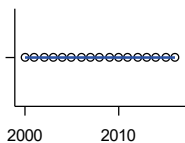
U.S. Census Bureau, County Business Patterns. Beginning with the 2017 data, any tabulation with fewer than 3 establishments were omitted from the release. Data for these establishments are included in the broader total.

Year	County	State of Kansas	Non Metro Kansas	County Rank	Per 1000 or \$ Per Capita
2000	288	1,388,712	.	.	44.1
2001	321	1,416,480	.	.	49.6
2002	282	1,378,905	.	.	43.9
2003	317	1,387,061	.	.	49.2
2004	.	1,544,442	.	.	.
2005	.	1,694,687	.	.	.
2006	.	1,800,846	.	.	.
2007	377	1,978,025	.	.	58.0
2008	.	2,096,864	.	.	.
2009	.	1,832,540	.	.	.
2010	.	2,117,325	.	.	.
2011	375	2,114,970	.	.	58.0
2012	.	2,230,250	.	.	.
2013	.	2,214,320	.	.	.
2014	.	2,444,170	.	.	.
2015	.	2,577,592	.	.	.
2016	864	2,760,706	.	.	137.1
2017	669	3,026,927	.	.	106.5
2018	751	3,007,347	.	.	121.9
2019	1,220	3,075,485	.	.	199.9
2020	1,557	3,250,046	.	.	244.2

County: county value. Kansas: state value. County Rank: highest county value ranked #1. (\$000): thousands of dollars. Nonmetro Kansas: Kansas total less Metropolitan Areas as defined by the Office of Management and Budget (OMB; released 3/6/2020). Per 1000: For nonmoney amounts, Per 1000=(county value / county population for the same year as the data) x 1000. \$ Per capita=(county value / county population for the same year as the data). Value= . indicates missing or suppressed data or value not calculated.

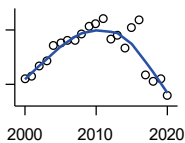
Business

**TOTAL ANNUAL PAYROLL(\$000):
EDUCATIONAL SERVICES**



U.S. Census Bureau, County Business Patterns. Beginning with the 2017 data, any tabulation with fewer than 3 establishments were omitted from the release. Data for these establishments are included in the broader total.

Year	County	State of Kansas	Non Metro Kansas	County Rank	Per 1000 or \$ Per Capita
2000	0	299,843	.	.	0.0
2001	0	320,606	.	.	0.0
2002	0	353,531	.	.	0.0
2003	0	350,814	.	.	0.0
2004	0	361,644	.	.	0.0
2005	0	375,781	.	.	0.0
2006	0	400,565	.	.	0.0
2007	0	414,233	.	.	0.0
2008	0	463,210	.	.	0.0
2009	0	468,856	.	.	0.0
2010	0	487,670	.	.	0.0
2011	0	504,964	.	.	0.0
2012	0	508,448	.	.	0.0
2013	0	553,995	.	.	0.0
2014	0	612,073	.	.	0.0
2015	0	579,794	.	.	0.0
2016	0	571,582	.	.	0.0



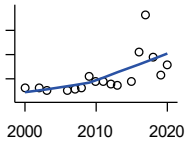
**TOTAL ANNUAL PAYROLL(\$000):
HEALTH CARE AND SOCIAL ASSISTANCE**

U.S. Census Bureau, County Business Patterns. Beginning with the 2017 data, any tabulation with fewer than 3 establishments were omitted from the release. Data for these establishments are included in the broader total.

Year	County	State of Kansas	Non Metro Kansas	County Rank	Per 1000 or \$ Per Capita
2000	8,584	4,120,595	.	.	1,315.6
2001	8,966	4,445,027	.	.	1,384.3
2002	10,005	4,705,220	.	.	1,558.7
2003	10,583	4,939,323	.	.	1,643.3
2004	12,279	5,232,394	.	.	1,907.6
2005	12,545	5,487,089	.	.	1,958.9
2006	12,908	5,814,218	.	.	1,996.6
2007	12,862	6,186,471	.	.	1,977.9
2008	13,505	6,490,627	.	.	2,087.0
2009	14,337	6,749,962	.	.	2,229.0
2010	14,630	6,871,727	.	.	2,251.8
2011	15,262	7,129,655	.	.	2,362.2
2012	12,974	7,614,853	.	.	2,007.7
2013	13,350	7,541,515	.	.	2,097.4
2014	12,011	7,733,621	.	.	1,893.0
2015	14,313	7,969,650	.	.	2,271.2
2016	15,084	8,018,706	.	.	2,393.5
2017	9,004	8,384,998	.	.	1,432.8
2018	8,271	8,637,619	.	.	1,342.0
2019	8,551	8,854,414	.	.	1,401.3
2020	6,726	9,309,269	.	.	1,054.9

County: county value. Kansas: state value. County Rank: highest county value ranked #1. (\$000): thousands of dollars. Nonmetro Kansas: Kansas total less Metropolitan Areas as defined by the Office of Management and Budget (OMB; released 3/6/2020). Per 1000: For nonmoney amounts, Per 1000=(county value / county population for the same year as the data) x 1000. \$ Per capita=(county value / county population for the same year as the data). Value= . indicates missing or suppressed data or value not calculated.

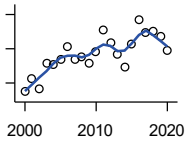
Business



**TOTAL ANNUAL PAYROLL(\$000):
ARTS, ENTERTAINMENT, AND
RECREATION**

U.S. Census Bureau, County Business Patterns. Beginning with the 2017 data, any tabulation with fewer than 3 establishments were omitted from the release. Data for these establishments are included in the broader total.

Year	County	State of Kansas	Non Metro Kansas	County Rank	Per 1000 or \$ Per Capita
2000	163	195,784	.	.	25.0
2001	.	203,511	.	.	.
2002	164	206,204	.	.	25.5
2003	153	185,049	.	.	23.8
2004	.	190,742	.	.	.
2005	.	196,594	.	.	.
2006	152	201,049	.	.	23.5
2007	157	220,435	.	.	24.1
2008	161	236,986	.	.	24.9
2009	211	237,116	.	.	32.8
2010	191	233,285	.	.	29.4
2011	188	234,351	.	.	29.1
2012	179	254,169	.	.	27.7
2013	175	278,474	.	.	27.5
2014	.	289,103	.	.	.
2015	189	300,253	.	.	30.0
2016	311	312,902	.	.	49.3
2017	464	323,153	.	.	73.8
2018	290	325,454	.	.	47.1
2019	213	335,362	.	.	34.9
2020	258	298,119	.	.	40.5



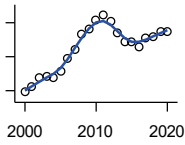
**TOTAL ANNUAL PAYROLL(\$000):
ACCOMMODATION AND FOOD
SERVICES**

U.S. Census Bureau, County Business Patterns. Beginning with the 2017 data, any tabulation with fewer than 3 establishments were omitted from the release. Data for these establishments are included in the broader total.

Year	County	State of Kansas	Non Metro Kansas	County Rank	Per 1000 or \$ Per Capita
2000	696	926,831	.	.	106.7
2001	853	960,196	.	.	131.7
2002	735	930,510	.	.	114.5
2003	1,027	992,313	.	.	159.5
2004	1,014	1,046,901	.	.	157.5
2005	1,081	1,101,854	.	.	168.8
2006	1,228	1,185,280	.	.	189.9
2007	1,081	1,431,100	.	.	166.2
2008	1,102	1,271,594	.	.	170.3
2009	1,038	1,283,065	.	.	161.4
2010	1,168	1,296,556	.	.	179.8
2011	1,413	1,364,281	.	.	218.7
2012	1,274	1,388,337	.	.	197.2
2013	1,130	1,476,335	.	.	177.5
2014	988	1,572,021	.	.	155.7
2015	1,261	1,640,144	.	.	200.1
2016	1,544	1,709,193	.	.	245.0
2017	1,384	1,824,791	.	.	220.2
2018	1,399	1,880,364	.	.	227.0
2019	1,341	1,958,603	.	.	219.8
2020	1,173	1,745,238	.	.	184.0

County: county value. Kansas: state value. County Rank: highest county value ranked #1. (\$000): thousands of dollars. Nonmetro Kansas: Kansas total less Metropolitan Areas as defined by the Office of Management and Budget (OMB; released 3/6/2020). Per 1000: For nonmoney amounts, Per 1000=(county value / county population for the same year as the data) x 1000. \$ Per capita=(county value / county population for the same year as the data). Value= . indicates missing or suppressed data or value not calculated.

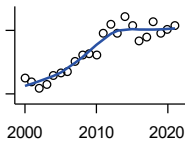
Business



**TOTAL ANNUAL PAYROLL(\$000):
OTHER SERVICES**

U.S. Census Bureau, County Business Patterns. Beginning with the 2017 data, any tabulation with fewer than 3 establishments were omitted from the release. Data for these establishments are included in the broader total.

Year	County	State of Kansas	Non Metro Kansas	County Rank	Per 1000 or \$ Per Capita
2000	582	965,540	.	.	89.2
2001	648	996,716	.	.	100.0
2002	749	1,007,464	.	.	116.7
2003	767	979,466	.	.	119.1
2004	754	970,383	.	.	117.1
2005	828	1,005,537	.	.	129.3
2006	975	1,055,932	.	.	150.8
2007	1,080	1,141,551	.	.	166.1
2008	1,273	1,184,016	.	.	196.7
2009	1,332	1,167,154	.	.	207.1
2010	1,429	1,170,201	.	.	219.9
2011	1,493	1,173,775	.	.	231.1
2012	1,418	1,217,210	.	.	219.4
2013	1,278	1,254,933	.	.	200.8
2014	1,179	1,305,563	.	.	185.8
2015	1,168	1,341,075	.	.	185.3
2016	1,120	1,351,375	.	.	177.7
2017	1,220	1,344,179	.	.	194.1
2018	1,236	1,382,801	.	.	200.6
2019	1,300	1,427,711	.	.	213.0
2020	1,295	1,420,859	.	.	203.1



**NOMINAL TAXABLE RETAIL SALES
(million\$)**

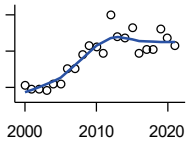
Kansas Department of Revenue

Year	County	State of Kansas	Non Metro Kansas	County Rank	Per 1000 or \$ Per Capita
2000	37.3	30,119.0	8,831.7	65	5.7
2001	35.5	30,202.2	8,700.3	67	5.5
2002	32.5	29,380.8	8,241.5	64	5.1
2003	34.4	30,694.0	8,710.6	66	5.3
2004	38.7	31,922.6	9,062.5	66	6.0
2005	39.8	32,924.2	9,386.6	66	6.2
2006	40.7	34,937.6	10,042.1	66	6.3
2007	45.6	36,180.1	10,553.2	66	7.0
2008	48.7	37,559.5	11,126.9	65	7.5
2009	48.8	35,211.8	10,351.5	61	7.6
2010	48.6	35,655.7	10,606.1	64	7.5
2011	58.8	37,257.0	11,153.5	60	9.1
2012	62.7	38,988.8	11,749.1	61	9.7
2013	59.0	40,009.0	11,993.8	62	9.3
2014	66.6	41,299.0	12,365.4	61	10.5
2015	62.5	41,635.8	11,747.6	60	9.9
2016	55.1	42,040.2	11,523.5	61	8.7
2017	56.6	41,940.1	11,449.9	61	9.0
2018	64.2	42,732.3	11,643.9	56	10.4
2019	58.8	43,732.5	12,062.7	58	9.6
2020	60.7	43,689.9	12,331.7	59	9.5
2021	62.2	48,532.8	13,413.0	61	9.8

County: county value. Kansas: state value. County Rank: highest county value ranked #1. (\$000): thousands of dollars. Nonmetro Kansas: Kansas total less Metropolitan Areas as defined by the Office of Management and Budget (OMB; released 3/6/2020). Per 1000: For nonmoney amounts, Per 1000=(county value / county population for the same year as the data) x 1000. \$ Per capita=(county value / county population for the same year as the data). Value= . indicates missing or suppressed data or value not calculated.

Business

RETAIL PULL FACTOR



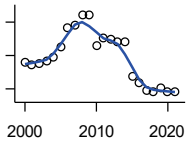
Kansas Direct Program, Kansas State University Cooperative Extension Service (1980-1999); Kansas Department of Revenue (2000-)

Year	County	State of Kansas	Non Metro Kansas	County Rank	Per 1000 or \$ Per Capita
2000	0.51	.	.	73	.
2001	0.49	.	.	74	.
2002	0.49	.	.	72	.
2003	0.48	.	.	75	.
2004	0.52	.	.	75	.
2005	0.52	.	.	76	.
2006	0.60	.	.	68	.
2007	0.60	.	.	67	.
2008	0.68	.	.	58	.
2009	0.73	.	.	58	.
2010	0.72	.	.	55	.
2011	0.69	.	.	66	.
2012	0.90	.	.	38	.
2013	0.78	.	.	52	.
2014	0.77	.	.	51	.
2015	0.83	.	.	42	.
2016	0.69	.	.	59	.
2017	0.71	.	.	54	.
2018	0.71	.	.	56	.
2019	0.82	.	.	35	.
2020	0.77	.	.	45	.
2021	0.73	.	.	58	.

County: county value. Kansas: state value. County Rank: highest county value ranked #1. (\$000): thousands of dollars. Nonmetro Kansas: Kansas total less Metropolitan Areas as defined by the Office of Management and Budget (OMB; released 3/6/2020). Per 1000: For nonmoney amounts, Per 1000=(county value / county population for the same year as the data) x 1000. \$ Per capita=(county value / county population for the same year as the data). Value= . indicates missing or suppressed data or value not calculated.

Employment

CIVILIAN LABOR FORCE (BLS-Place of Residence; 1990-)



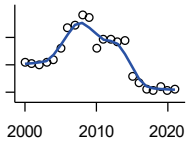
U.S. Department of Labor, Bureau of Labor Statistics (BLS)

Year	County	State of Kansas	Non Metro Kansas	County Rank	Per 1000 or \$ Per Capita
2000	3,153	1,402,606	482,229	62	483.2
2001	3,119	1,398,521	475,280	61	481.6
2002	3,133	1,419,335	482,428	63	488.1
2003	3,162	1,441,065	490,161	62	491.0
2004	3,216	1,458,910	494,509	63	499.6
2005	3,382	1,458,767	490,047	61	528.1
2006	3,660	1,467,553	498,594	55	566.1
2007	3,695	1,485,414	497,048	54	568.2
2008	3,857	1,493,365	504,522	53	596.0
2009	3,859	1,512,572	516,311	54	600.0
2010	3,396	1,500,463	492,594	59	522.7
2011	3,508	1,498,000	492,563	57	543.0
2012	3,500	1,490,808	489,349	57	541.6
2013	3,454	1,489,395	485,484	57	542.7
2014	3,450	1,494,203	481,813	57	543.7
2015	2,946	1,493,782	477,546	66	467.5
2016	2,846	1,491,961	468,258	68	451.6
2017	2,727	1,488,346	461,063	66	434.0
2018	2,700	1,488,027	456,866	67	438.1
2019	2,756	1,497,517	455,858	65	451.7
2020	2,704	1,493,706	452,935	66	424.1
2021	2,701	1,495,665	453,398	66	426.3

County: county value. Kansas: state value. County Rank: highest county value ranked #1. (\$000): thousands of dollars. Nonmetro Kansas: Kansas total less Metropolitan Areas as defined by the Office of Management and Budget (OMB; released 3/6/2020). Per 1000: For nonmoney amounts, Per 1000=(county value / county population for the same year as the data) x 1000. \$ Per capita=(county value / county population for the same year as the data). Value= . indicates missing or suppressed data or value not calculated.

Employment

EMPLOYED (BLS-Place of Residence; 1990-)



U.S. Department of Labor, Bureau of Labor Statistics (BLS)

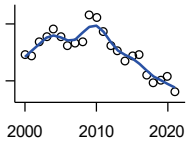
Year	County	State of Kansas	Non Metro Kansas	County Rank	Per 1000 or \$ Per Capita
2000	3,043	1,349,841	464,962	62	466.4
2001	3,011	1,338,775	455,154	61	464.9
2002	3,007	1,347,163	461,241	64	468.5
2003	3,028	1,361,115	467,622	64	470.2
2004	3,072	1,378,355	470,330	64	477.2
2005	3,248	1,384,654	467,722	61	507.2
2006	3,539	1,402,950	479,174	55	547.4
2007	3,570	1,422,109	477,983	54	549.0
2008	3,730	1,425,022	484,056	53	576.4
2009	3,697	1,408,142	485,797	54	574.8
2010	3,238	1,396,172	461,635	58	498.4
2011	3,368	1,402,198	463,723	57	521.3
2012	3,378	1,405,638	463,376	57	522.7
2013	3,339	1,410,470	461,405	57	524.6
2014	3,349	1,426,892	461,797	57	527.8
2015	2,838	1,431,533	457,899	66	450.3
2016	2,737	1,431,920	449,356	68	434.3
2017	2,644	1,434,516	445,003	66	420.8
2018	2,627	1,439,329	442,716	67	426.3
2019	2,680	1,450,705	442,108	65	439.2
2020	2,623	1,408,965	433,229	66	411.4
2021	2,641	1,447,323	441,159	66	416.8

County: county value. Kansas: state value. County Rank: highest county value ranked #1. (\$000): thousands of dollars. Nonmetro Kansas: Kansas total less Metropolitan Areas as defined by the Office of Management and Budget (OMB; released 3/6/2020). Per 1000: For nonmoney amounts, Per 1000=(county value / county population for the same year as the data) x 1000. \$ Per capita=(county value / county population for the same year as the data). Value= . indicates missing or suppressed data or value not calculated.

Employment

UNEMPLOYED (BLS-Place of Residence; 1990-)

U.S. Department of Labor, Bureau of Labor Statistics (BLS)

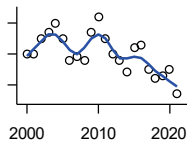


Year	County	State of Kansas	Non Metro Kansas	County Rank	Per 1000 or \$ Per Capita
2000	110	52,765	17,267	58	16.9
2001	108	59,746	20,126	61	16.7
2002	126	72,172	21,187	56	19.6
2003	134	79,950	22,539	61	20.8
2004	144	80,555	24,179	61	22.4
2005	134	74,113	22,325	59	20.9
2006	121	64,603	19,420	57	18.7
2007	125	63,305	19,065	57	19.2
2008	127	68,343	20,466	57	19.6
2009	162	104,430	30,514	63	25.2
2010	158	104,291	30,959	63	24.3
2011	140	95,802	28,840	63	21.7
2012	122	85,170	25,973	64	18.9
2013	115	78,925	24,079	64	18.1
2014	101	67,311	20,016	63	15.9
2015	108	62,249	19,647	64	17.1
2016	109	60,041	18,902	61	17.3
2017	83	53,830	16,060	66	13.2
2018	73	48,698	14,150	65	11.8
2019	76	46,812	13,750	63	12.5
2020	81	84,741	19,706	66	12.7
2021	60	48,342	12,239	63	9.5

County: county value. Kansas: state value. County Rank: highest county value ranked #1. (\$000): thousands of dollars. Nonmetro Kansas: Kansas total less Metropolitan Areas as defined by the Office of Management and Budget (OMB; released 3/6/2020). Per 1000: For nonmoney amounts, Per 1000=(county value / county population for the same year as the data) x 1000. \$ Per capita=(county value / county population for the same year as the data). Value= . indicates missing or suppressed data or value not calculated.

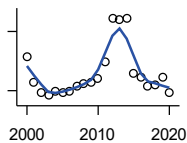
Employment

UNEMPLOYMENT RATE (BLS-Place of Residence; 1990-)



U.S. Department of Labor, Bureau of Labor Statistics (BLS)

Year	County	State of Kansas	Non Metro Kansas	County Rank	Per 1000 or \$ Per Capita
2000	3.5	3.8	3.6	45	.
2001	3.5	4.3	4.2	64	.
2002	4.0	5.1	4.4	51	.
2003	4.2	5.5	4.6	53	.
2004	4.5	5.5	4.9	54	.
2005	4.0	5.1	4.6	62	.
2006	3.3	4.4	3.9	78	.
2007	3.4	4.3	3.8	67	.
2008	3.3	4.6	4.1	77	.
2009	4.2	6.9	5.9	77	.
2010	4.7	7.0	6.3	72	.
2011	4.0	6.4	5.9	82	.
2012	3.5	5.7	5.3	88	.
2013	3.3	5.3	5.0	89	.
2014	2.9	4.5	4.2	88	.
2015	3.7	4.2	4.1	60	.
2016	3.8	4.0	4.0	53	.
2017	3.0	3.6	3.5	68	.
2018	2.7	3.3	3.1	65	.
2019	2.8	3.1	3.0	57	.
2020	3.0	5.7	4.4	74	.
2021	2.2	3.2	2.7	69	.



BEA EMPLOYMENT: TOTAL (Place of Work)

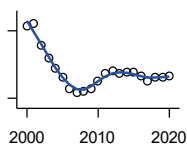
U.S. Bureau of Economic Analysis, Regional Economic Information System (REIS)

Year	County	State of Kansas	Non Metro Kansas	County Rank	Per 1000 or \$ Per Capita
2000	3,942	1,760,312	604,361	61	604.1
2001	3,690	1,767,601	592,672	64	569.7
2002	3,580	1,746,077	585,387	64	557.7
2003	3,550	1,733,694	577,860	63	551.2
2004	3,596	1,750,876	578,750	62	558.6
2005	3,577	1,765,650	577,562	62	558.6
2006	3,592	1,795,507	583,041	62	555.6
2007	3,646	1,844,355	591,924	62	560.7
2008	3,669	1,858,069	594,368	62	567.0
2009	3,690	1,813,184	580,972	61	573.7
2010	3,725	1,801,873	579,758	60	573.3
2011	3,894	1,819,044	583,725	59	602.7
2012	4,334	1,841,393	591,748	55	670.7
2013	4,320	1,869,054	597,236	55	678.7
2014	4,332	1,895,859	601,291	55	682.7
2015	3,778	1,910,954	598,589	62	599.5
2016	3,736	1,916,152	592,580	62	592.8
2017	3,645	1,914,179	584,337	62	580.0
2018	3,655	1,926,242	580,213	61	593.1
2019	3,737	1,925,204	574,496	58	612.4
2020	3,583	1,851,247	556,671	60	562.0

County: county value. Kansas: state value. County Rank: highest county value ranked #1. (\$000): thousands of dollars. Nonmetro Kansas: Kansas total less Metropolitan Areas as defined by the Office of Management and Budget (OMB; released 3/6/2020). Per 1000: For nonmoney amounts, Per 1000=(county value / county population for the same year as the data) x 1000. \$ Per capita=(county value / county population for the same year as the data). Value= . indicates missing or suppressed data or value not calculated.

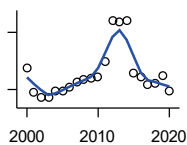
Employment

BEA EMPLOYMENT: FARM



U.S. Bureau of Economic Analysis,
Regional Economic Information System
(REIS)

Year	County	State of Kansas	Non Metro Kansas	County Rank	Per 1000 or \$ Per Capita
2000	510	77,477	59,088	82	78.2
2001	516	78,177	59,647	82	79.7
2002	467	70,532	53,893	84	72.8
2003	438	68,516	52,099	87	68.0
2004	416	67,586	51,246	88	64.6
2005	397	66,829	50,386	89	62.0
2006	372	64,910	48,728	91	57.5
2007	362	65,639	49,037	91	55.7
2008	366	63,820	47,682	87	56.6
2009	372	62,798	46,960	85	57.8
2010	387	63,882	47,984	84	59.6
2011	405	65,761	49,707	84	62.7
2012	410	63,753	48,167	79	63.4
2013	406	62,739	47,255	77	63.8
2014	408	64,308	48,722	81	64.3
2015	407	64,416	48,927	82	64.6
2016	399	63,840	48,539	82	63.3
2017	389	61,876	46,936	82	61.9
2018	396	63,233	48,069	82	64.3
2019	396	63,300	48,167	82	64.9
2020	400	64,281	49,038	82	62.7



BEA EMPLOYMENT: NON-FARM

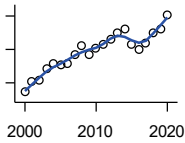
U.S. Bureau of Economic Analysis,
Regional Economic Information System
(REIS)

Year	County	State of Kansas	Non Metro Kansas	County Rank	Per 1000 or \$ Per Capita
2000	3,432	1,682,835	545,273	57	526.0
2001	3,174	1,689,424	533,025	60	490.0
2002	3,113	1,675,545	531,494	61	485.0
2003	3,112	1,665,178	525,761	60	483.2
2004	3,180	1,683,290	527,504	61	494.0
2005	3,180	1,698,821	527,176	60	496.6
2006	3,220	1,730,597	534,313	61	498.1
2007	3,284	1,778,716	542,887	61	505.0
2008	3,303	1,794,249	546,686	60	510.4
2009	3,318	1,750,386	534,012	60	515.9
2010	3,338	1,737,991	531,774	59	513.8
2011	3,489	1,753,283	534,018	56	540.0
2012	3,924	1,777,640	543,581	54	607.2
2013	3,914	1,806,315	549,981	55	614.9
2014	3,924	1,831,551	552,569	55	618.4
2015	3,371	1,846,538	549,662	60	534.9
2016	3,337	1,852,312	544,041	61	529.5
2017	3,256	1,852,303	537,401	61	518.1
2018	3,259	1,863,009	532,144	58	528.8
2019	3,341	1,861,904	526,329	56	547.5
2020	3,183	1,786,966	507,633	57	499.2

County: county value. Kansas: state value. County Rank: highest county value ranked #1. (\$000): thousands of dollars. Nonmetro Kansas: Kansas total less Metropolitan Areas as defined by the Office of Management and Budget (OMB; released 3/6/2020). Per 1000: For nonmoney amounts, Per 1000=(county value / county population for the same year as the data) x 1000. \$ Per capita=(county value / county population for the same year as the data). Value= . indicates missing or suppressed data or value not calculated.

Employment

AVERAGE WAGE PER JOB (\$)



U.S. Bureau of Economic Analysis,
Regional Economic Information System
(REIS)

Year	County	State of Kansas	Non Metro Kansas	County Rank	Per 1000 or \$ Per Capita
2000	22,192	31,854	24,396	57	.
2001	25,335	32,859	26,379	46	.
2002	25,644	33,707	26,331	40	.
2003	29,166	35,078	28,911	36	.
2004	30,666	35,932	29,747	28	.
2005	30,235	37,467	31,646	50	.
2006	30,944	40,038	31,993	40	.
2007	33,427	41,500	33,484	41	.
2008	36,223	44,197	36,256	40	.
2009	33,479	43,860	35,739	57	.
2010	35,219	45,370	38,631	61	.
2011	36,544	48,280	42,324	73	.
2012	38,081	50,549	42,015	66	.
2013	40,090	52,629	46,073	71	.
2014	41,027	51,959	43,562	51	.
2015	36,601	52,250	42,320	68	.
2016	35,062	51,664	41,964	77	.
2017	36,824	53,007	42,137	68	.
2018	39,998	54,790	44,514	61	.
2019	41,185	56,956	45,336	61	.
2020	45,354	60,597	49,183	63	.

BEA EMPLOYMENT: FORESTRY, FISHING, HUNTING, AND AG SUPPORT

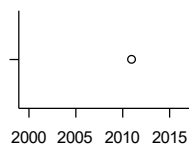
U.S. Bureau of Economic Analysis,
Regional Economic Information System
(REIS)

Year	County	State of Kansas	Non Metro Kansas	County Rank	Per 1000 or \$ Per Capita
2001	.	7,059	.	.	.
2002	.	8,045	.	.	.
2003	.	7,313	.	.	.
2004	.	7,623	.	.	.
2005	.	7,962	.	.	.
2006	.	7,748	.	.	.
2007	.	8,228	.	.	.
2008	.	8,646	.	.	.
2009	.	8,982	.	.	.
2010	.	9,251	.	.	.
2011	.	9,410	.	.	.
2012	.	9,691	.	.	.
2013	.	10,014	.	.	.
2014	.	10,708	.	.	.
2015	.	10,020	.	.	.
2016	.	10,383	.	.	.

County: county value. Kansas: state value. County Rank: highest county value ranked #1. (\$000): thousands of dollars. Nonmetro Kansas: Kansas total less Metropolitan Areas as defined by the Office of Management and Budget (OMB; released 3/6/2020). Per 1000: For nonmoney amounts, Per 1000=(county value / county population for the same year as the data) x 1000. \$ Per capita=(county value / county population for the same year as the data). Value= . indicates missing or suppressed data or value not calculated.

Employment

BEA EMPLOYMENT: MINING



U.S. Bureau of Economic Analysis,
Regional Economic Information System
(REIS)

Year	County	State of Kansas	Non Metro Kansas	County Rank	Per 1000 or \$ Per Capita
2001	.	19,592	.	.	.
2002	.	17,635	.	.	.
2003	.	19,869	.	.	.
2004	.	18,466	.	.	.
2005	.	19,489	.	.	.
2006	.	22,403	.	.	.
2007	.	24,043	.	.	.
2008	.	31,467	.	.	.
2009	.	29,941	.	.	.
2010	.	36,124	.	.	.
2011	169	31,658	.	30	.
2012	.	42,405	.	.	.
2013	.	46,585	.	.	.
2014	.	45,526	.	.	.
2015	.	46,460	.	.	.
2016	.	48,555	.	.	.

BEA EMPLOYMENT: UTILITIES

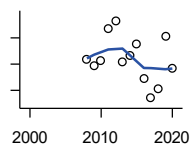
U.S. Bureau of Economic Analysis,
Regional Economic Information System
(REIS)

Year	County	State of Kansas	Non Metro Kansas	County Rank	Per 1000 or \$ Per Capita
2001	.	7,608	.	.	.
2002	.	7,087	.	.	.
2003	.	7,253	.	.	.
2004	.	7,356	.	.	.
2005	.	7,447	.	.	.
2006	.	7,478	.	.	.
2007	.	7,584	.	.	.
2008	.	7,855	.	.	.
2009	.	7,941	.	.	.
2010	.	8,028	.	.	.
2011	.	8,213	.	.	.
2012	.	8,155	.	.	.
2013	.	7,949	.	.	.
2014	.	7,985	.	.	.
2015	.	7,040	.	.	.
2016	.	7,133	.	.	.

County: county value. Kansas: state value. County Rank: highest county value ranked #1. (\$000): thousands of dollars. Nonmetro Kansas: Kansas total less Metropolitan Areas as defined by the Office of Management and Budget (OMB; released 3/6/2020). Per 1000: For nonmoney amounts, Per 1000=(county value / county population for the same year as the data) x 1000. \$ Per capita=(county value / county population for the same year as the data). Value= . indicates missing or suppressed data or value not calculated.

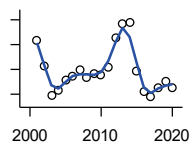
Employment

**BEA EMPLOYMENT:
CONSTRUCTION**



U.S. Bureau of Economic Analysis,
Regional Economic Information System
(REIS)

Year	County	State of Kansas	Non Metro Kansas	County Rank	Per 1000 or \$ Per Capita
2001	.	92,647	27,972	.	.
2002	.	90,370	.	.	.
2003	.	91,725	26,681	.	.
2004	.	93,271	.	.	.
2005	.	94,836	.	.	.
2006	.	97,449	.	.	.
2007	.	99,119	29,179	.	.
2008	124	97,741	.	69	.
2009	119	90,165	28,077	70	.
2010	123	84,708	26,402	71	.
2011	147	83,332	25,999	64	.
2012	153	85,966	.	65	.
2013	122	88,094	.	68	.
2014	127	91,143	.	68	.
2015	135	91,458	27,583	70	.
2016	109	93,539	27,151	73	.
2017	94	92,046	25,579	75	.
2018	101	92,985	25,530	71	.
2019	141	94,858	25,701	62	.
2020	117	94,186	26,085	66	.



**BEA EMPLOYMENT:
MANUFACTURING**

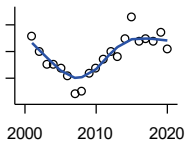
U.S. Bureau of Economic Analysis,
Regional Economic Information System
(REIS)

Year	County	State of Kansas	Non Metro Kansas	County Rank	Per 1000 or \$ Per Capita
2001	408	199,980	73,170	41	.
2002	357	188,905	70,691	45	.
2003	298	179,013	68,418	47	.
2004	309	181,738	69,669	46	.
2005	328	185,459	71,072	46	.
2006	335	188,047	71,704	45	.
2007	348	192,930	73,488	44	.
2008	333	193,116	72,235	47	.
2009	342	173,854	64,961	45	.
2010	340	166,000	62,884	44	.
2011	354	167,302	64,361	44	.
2012	413	169,308	65,944	41	.
2013	441	170,113	67,251	40	.
2014	444	169,307	68,299	43	.
2015	347	168,324	66,978	46	.
2016	304	167,723	65,796	45	.
2017	294	168,438	66,795	47	.
2018	313	171,778	68,181	47	.
2019	327	173,605	67,879	44	.
2020	314	165,228	65,658	44	.

County: county value. Kansas: state value. County Rank: highest county value ranked #1. (\$000): thousands of dollars. Nonmetro Kansas: Kansas total less Metropolitan Areas as defined by the Office of Management and Budget (OMB; released 3/6/2020). Per 1000: For nonmoney amounts, Per 1000=(county value / county population for the same year as the data) x 1000. \$ Per capita=(county value / county population for the same year as the data). Value= . indicates missing or suppressed data or value not calculated.

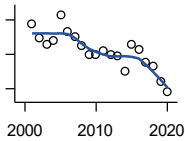
Employment

BEA EMPLOYMENT: WHOLESALE TRADE



U.S. Bureau of Economic Analysis,
Regional Economic Information System
(REIS)

Year	County	State of Kansas	Non Metro Kansas	County Rank	Per 1000 or \$ Per Capita
2001	86	65,698	.	69	.
2002	80	65,408	.	72	.
2003	75	63,504	.	70	.
2004	75	64,434	.	70	.
2005	74	64,587	.	67	.
2006	71	64,743	.	72	.
2007	64	65,993	.	72	.
2008	65	67,693	.	72	.
2009	72	65,954	.	72	.
2010	74	64,376	.	75	.
2011	77	64,712	.	75	.
2012	80	63,973	.	70	.
2013	78	64,999	.	69	.
2014	85	69,295	.	68	.
2015	93	68,444	.	65	.
2016	84	64,843	.	70	.
2017	85	65,014	.	68	.
2018	84	64,745	.	69	.
2019	87	63,324	.	66	.
2020	81	60,844	.	71	.



BEA EMPLOYMENT: RETAIL TRADE

U.S. Bureau of Economic Analysis,
Regional Economic Information System
(REIS)

Year	County	State of Kansas	Non Metro Kansas	County Rank	Per 1000 or \$ Per Capita
2001	336	198,069	.	63	.
2002	319	196,112	.	65	.
2003	311	194,545	64,173	68	.
2004	316	192,957	63,265	67	.
2005	346	191,656	62,506	62	.
2006	326	190,391	62,082	62	.
2007	321	190,643	61,716	61	.
2008	310	185,907	59,783	66	.
2009	299	181,262	58,714	65	.
2010	300	177,858	57,470	64	.
2011	304	180,548	57,734	63	.
2012	299	180,596	57,349	66	.
2013	298	183,245	57,556	66	.
2014	280	185,899	57,855	68	.
2015	311	188,421	58,516	62	.
2016	305	188,505	57,864	62	.
2017	291	186,633	56,715	64	.
2018	286	183,323	.	62	.
2019	268	177,240	53,427	64	.
2020	256	171,777	52,563	64	.

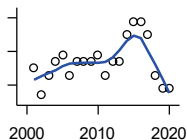
County: county value. Kansas: state value. County Rank: highest county value ranked #1. (\$000): thousands of dollars. Nonmetro Kansas: Kansas total less Metropolitan Areas as defined by the Office of Management and Budget (OMB; released 3/6/2020). Per 1000: For nonmoney amounts, Per 1000=(county value / county population for the same year as the data) x 1000. \$ Per capita=(county value / county population for the same year as the data). Value= . indicates missing or suppressed data or value not calculated.

Employment

**BEA EMPLOYMENT:
TRANSPORTATION AND
WAREHOUSING**

U.S. Bureau of Economic Analysis,
Regional Economic Information System
(REIS)

Year	County	State of Kansas	Non Metro Kansas	County Rank	Per 1000 or \$ Per Capita
2001	.	56,302	.	.	.
2002	.	55,319	.	.	.
2003	.	55,509	.	.	.
2004	.	55,479	.	.	.
2005	.	56,287	.	.	.
2006	.	57,506	.	.	.
2007	.	59,277	.	.	.
2008	.	58,725	.	.	.
2009	.	56,238	.	.	.
2010	.	55,179	.	.	.
2011	.	57,449	.	.	.
2012	.	59,756	.	.	.
2013	.	59,780	.	.	.
2014	.	60,565	.	.	.
2015	.	63,256	.	.	.
2016	.	65,705	.	.	.



BEA EMPLOYMENT: INFORMATION

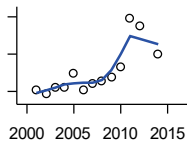
U.S. Bureau of Economic Analysis,
Regional Economic Information System
(REIS)

Year	County	State of Kansas	Non Metro Kansas	County Rank	Per 1000 or \$ Per Capita
2001	55	54,895	.	43	.
2002	51	50,728	.	44	.
2003	54	48,328	6,860	44	.
2004	56	45,617	.	44	.
2005	57	43,840	.	41	.
2006	54	43,925	.	39	.
2007	56	45,115	.	40	.
2008	56	42,958	.	39	.
2009	56	38,677	.	40	.
2010	57	33,432	.	38	.
2011	54	32,160	.	38	.
2012	56	31,829	.	37	.
2013	56	31,737	.	37	.
2014	60	32,316	.	35	.
2015	62	25,282	.	34	.
2016	62	24,998	.	34	.
2017	60	24,004	.	32	.
2018	54	23,165	.	34	.
2019	52	22,078	.	34	.
2020	52	20,810	.	35	.

County: county value. Kansas: state value. County Rank: highest county value ranked #1. (\$000): thousands of dollars. Nonmetro Kansas: Kansas total less Metropolitan Areas as defined by the Office of Management and Budget (OMB; released 3/6/2020). Per 1000: For nonmoney amounts, Per 1000=(county value / county population for the same year as the data) x 1000. \$ Per capita=(county value / county population for the same year as the data). Value= . indicates missing or suppressed data or value not calculated.

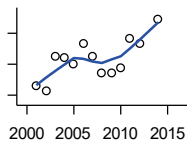
Employment

BEA EMPLOYMENT: FINANCE AND INSURANCE



U.S. Bureau of Economic Analysis,
Regional Economic Information System
(REIS)

Year	County	State of Kansas	Non Metro Kansas	County Rank	Per 1000 or \$ Per Capita
2001	121	76,118	.	57	.
2002	117	78,206	.	57	.
2003	125	78,441	.	60	.
2004	125	78,350	.	58	.
2005	139	78,952	.	53	.
2006	122	80,900	.	54	.
2007	129	86,094	.	54	.
2008	131	89,590	.	53	.
2009	135	93,573	.	56	.
2010	147	92,428	.	54	.
2011	199	99,495	.	46	.
2012	190	98,640	.	47	.
2013	.	99,998	.	.	.
2014	160	98,209	.	53	.
2015	.	100,534	.	.	.
2016	.	102,699	.	.	.



BEA EMPLOYMENT: REAL ESTATE, RENTAL, AND LEASING

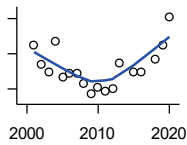
U.S. Bureau of Economic Analysis,
Regional Economic Information System
(REIS)

Year	County	State of Kansas	Non Metro Kansas	County Rank	Per 1000 or \$ Per Capita
2001	36	45,237	.	55	.
2002	33	44,970	.	55	.
2003	55	47,095	.	54	.
2004	54	50,181	.	54	.
2005	50	53,335	.	50	.
2006	63	55,342	.	49	.
2007	55	57,694	.	50	.
2008	44	57,933	.	53	.
2009	44	57,132	.	53	.
2010	48	59,578	.	56	.
2011	67	61,821	.	47	.
2012	63	60,432	.	49	.
2013	.	62,134	.	.	.
2014	79	64,705	.	51	.
2015	.	66,604	.	.	.
2016	.	68,395	.	.	.

County: county value. Kansas: state value. County Rank: highest county value ranked #1. (\$000): thousands of dollars. Nonmetro Kansas: Kansas total less Metropolitan Areas as defined by the Office of Management and Budget (OMB; released 3/6/2020). Per 1000: For nonmoney amounts, Per 1000=(county value / county population for the same year as the data) x 1000. \$ Per capita=(county value / county population for the same year as the data). Value= . indicates missing or suppressed data or value not calculated.

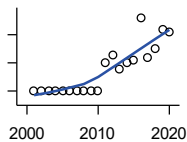
Employment

BEA EMPLOYMENT: PROFESSIONAL AND TECHNICAL SERVICES



U.S. Bureau of Economic Analysis,
Regional Economic Information System
(REIS)

Year	County	State of Kansas	Non Metro Kansas	County Rank	Per 1000 or \$ Per Capita
2001	135	81,396	.	38	.
2002	124	80,684	.	37	.
2003	120	80,311	.	34	.
2004	137	85,550	.	32	.
2005	117	85,003	.	41	.
2006	119	87,381	.	41	.
2007	119	92,717	.	43	.
2008	113	95,362	.	49	.
2009	107	93,232	.	46	.
2010	111	93,037	.	45	.
2011	109	93,237	.	48	.
2012	110	95,360	.	51	.
2013	125	100,795	.	46	.
2014	.	102,210	.	.	.
2015	120	105,625	.	52	.
2016	120	108,059	.	47	.
2018	127	110,513	.	43	.
2019	135	109,637	.	39	.
2020	151	108,634	.	36	.



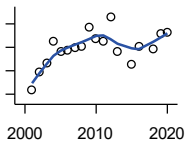
BEA EMPLOYMENT: MANAGEMENT OF COMPANIES AND ENTERPRISES

U.S. Bureau of Economic Analysis,
Regional Economic Information System
(REIS)

Year	County	State of Kansas	Non Metro Kansas	County Rank	Per 1000 or \$ Per Capita
2001	0	13,832	.	70	.
2002	0	12,576	.	69	.
2003	0	11,135	.	67	.
2004	0	10,614	.	67	.
2005	0	11,811	.	66	.
2006	0	13,061	.	66	.
2007	0	13,398	.	69	.
2008	0	15,234	.	72	.
2009	0	14,849	.	75	.
2010	0	16,579	.	75	.
2011	10	15,343	.	29	.
2012	13	15,075	.	30	.
2013	8	16,667	.	31	.
2014	10	20,441	.	35	.
2015	11	29,604	.	36	.
2016	26	27,824	.	28	.
2017	12	27,767	.	35	.
2018	15	28,862	.	32	.
2019	22	30,512	.	24	.
2020	21	25,648	.	25	.

County: county value. Kansas: state value. County Rank: highest county value ranked #1. (\$000): thousands of dollars. Nonmetro Kansas: Kansas total less Metropolitan Areas as defined by the Office of Management and Budget (OMB; released 3/6/2020). Per 1000: For nonmoney amounts, Per 1000=(county value / county population for the same year as the data) x 1000. \$ Per capita=(county value / county population for the same year as the data). Value= . indicates missing or suppressed data or value not calculated.

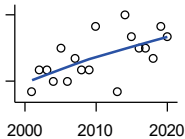
Employment



**BEA EMPLOYMENT:
ADMINISTRATIVE AND WASTE
SERVICES**

U.S. Bureau of Economic Analysis,
Regional Economic Information System
(REIS)

Year	County	State of Kansas	Non Metro Kansas	County Rank	Per 1000 or \$ Per Capita
2001	44	81,573	.	48	.
2002	59	82,992	.	43	.
2003	67	81,298	.	38	.
2004	85	85,721	.	40	.
2005	76	89,933	.	38	.
2006	78	93,688	.	41	.
2007	80	98,865	.	44	.
2008	81	97,440	.	41	.
2009	97	92,455	.	45	.
2010	87	93,675	.	46	.
2011	85	97,969	.	47	.
2012	106	100,490	.	47	.
2013	76	104,680	.	51	.
2014	.	107,218	18,836	.	.
2015	66	103,436	18,767	53	.
2016	81	103,233	18,428	47	.
2018	79	102,062	.	45	.
2019	92	100,897	.	40	.
2020	93	95,361	.	43	.



**BEA EMPLOYMENT: EDUCATIONAL
SERVICES**

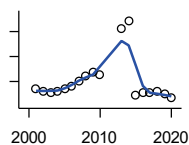
U.S. Bureau of Economic Analysis,
Regional Economic Information System
(REIS)

Year	County	State of Kansas	Non Metro Kansas	County Rank	Per 1000 or \$ Per Capita
2001	5	21,169	.	66	.
2002	7	22,173	.	51	.
2003	7	22,651	.	55	.
2004	6	21,601	.	74	.
2005	9	22,177	.	48	.
2006	6	22,438	.	74	.
2007	8	23,647	.	44	.
2008	7	24,653	.	59	.
2009	7	25,120	.	46	.
2010	11	26,071	.	29	.
2011	.	26,080	.	.	.
2012	.	26,625	.	.	.
2013	5	27,508	.	67	.
2014	12	28,708	.	40	.
2015	10	28,794	.	47	.
2016	9	27,996	.	45	.
2017	9	28,459	.	37	.
2018	8	28,560	.	56	.
2019	11	29,586	.	43	.
2020	10	27,508	.	42	.

County: county value. Kansas: state value. County Rank: highest county value ranked #1. (\$000): thousands of dollars. Nonmetro Kansas: Kansas total less Metropolitan Areas as defined by the Office of Management and Budget (OMB; released 3/6/2020). Per 1000: For nonmoney amounts, Per 1000=(county value / county population for the same year as the data) x 1000. \$ Per capita=(county value / county population for the same year as the data). Value= . indicates missing or suppressed data or value not calculated.

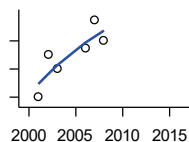
Employment

BEA EMPLOYMENT: HEALTH CARE AND SOCIAL ASSISTANCE



U.S. Bureau of Economic Analysis, Regional Economic Information System (REIS)

Year	County	State of Kansas	Non Metro Kansas	County Rank	Per 1000 or \$ Per Capita
2001	338	165,415	.	31	.
2002	318	168,198	.	33	.
2003	309	169,654	.	37	.
2004	323	172,796	.	35	.
2005	340	173,949	.	30	.
2006	363	176,919	.	28	.
2007	406	182,160	.	28	.
2008	448	186,051	.	28	.
2009	478	188,499	.	22	.
2010	454	188,383	.	23	.
2011	.	190,736	.	.	.
2012	.	192,991	.	.	.
2013	828	193,687	.	21	.
2014	886	194,632	.	21	.
2015	295	199,724	.	31	.
2016	310	201,830	.	34	.
2017	310	201,910	.	29	.
2018	316	204,011	.	35	.
2019	304	206,646	.	34	.
2020	266	204,942	.	33	.



BEA EMPLOYMENT: ARTS, ENTERTAINMENT, AND RECREATION

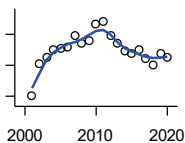
U.S. Bureau of Economic Analysis, Regional Economic Information System (REIS)

Year	County	State of Kansas	Non Metro Kansas	County Rank	Per 1000 or \$ Per Capita
2001	30	25,012	.	41	.
2002	36	25,668	.	40	.
2003	34	24,116	.	41	.
2004	.	25,355	.	.	.
2005	.	26,067	.	.	.
2006	37	26,505	.	48	.
2007	41	27,489	.	44	.
2008	38	27,501	.	43	.
2009	.	27,203	.	.	.
2010	.	27,479	.	.	.
2011	.	28,487	.	.	.
2012	.	30,729	.	.	.
2013	.	31,068	.	.	.
2014	.	32,154	.	.	.
2015	.	31,169	.	.	.
2016	.	32,373	.	.	.

County: county value. Kansas: state value. County Rank: highest county value ranked #1. (\$000): thousands of dollars. Nonmetro Kansas: Kansas total less Metropolitan Areas as defined by the Office of Management and Budget (OMB; released 3/6/2020). Per 1000: For nonmoney amounts, Per 1000=(county value / county population for the same year as the data) x 1000. \$ Per capita=(county value / county population for the same year as the data). Value= . indicates missing or suppressed data or value not calculated.

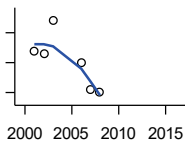
Employment

BEA EMPLOYMENT: GOVERNMENT AND GOVERNMENT ENTERPRISES



U.S. Bureau of Economic Analysis, Regional Economic Information System (REIS)

Year	County	State of Kansas	Non Metro Kansas	County Rank	Per 1000 or \$ Per Capita
2001	880	282,293	102,993	54	.
2002	922	281,427	103,581	52	.
2003	930	282,459	103,389	53	.
2004	940	283,877	103,946	52	.
2005	942	282,798	103,194	53	.
2006	944	288,372	104,103	54	.
2007	959	294,413	104,598	52	.
2008	948	298,580	104,718	54	.
2009	951	300,422	104,081	53	.
2010	973	303,875	103,382	49	.
2011	977	299,952	101,535	48	.
2012	958	298,068	101,180	49	.
2013	948	297,689	101,232	51	.
2014	938	296,956	100,634	50	.
2015	936	295,799	99,719	50	.
2016	940	291,536	98,520	49	.
2017	929	295,748	99,542	49	.
2018	920	298,105	99,499	49	.
2019	936	302,017	100,227	47	.
2020	930	292,583	96,477	48	.



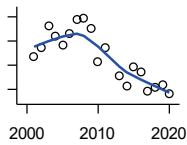
BEA EMPLOYMENT: ACCOMMODATION AND FOOD SERVICES

U.S. Bureau of Economic Analysis, Regional Economic Information System (REIS)

Year	County	State of Kansas	Non Metro Kansas	County Rank	Per 1000 or \$ Per Capita
2001	144	103,353	.	45	.
2002	143	103,692	.	46	.
2003	154	105,138	.	46	.
2004	.	106,694	.	.	.
2005	.	107,303	.	.	.
2006	140	109,888	.	53	.
2007	131	110,863	.	48	.
2008	130	111,092	.	49	.
2009	.	109,353	.	.	.
2010	.	108,628	.	.	.
2011	.	110,514	.	.	.
2012	.	112,574	.	.	.
2013	.	114,102	.	.	.
2014	.	115,768	.	.	.
2015	.	118,503	.	.	.
2016	.	119,764	.	.	.

County: county value. Kansas: state value. County Rank: highest county value ranked #1. (\$000): thousands of dollars. Nonmetro Kansas: Kansas total less Metropolitan Areas as defined by the Office of Management and Budget (OMB; released 3/6/2020). Per 1000: For nonmoney amounts, Per 1000=(county value / county population for the same year as the data) x 1000. \$ Per capita=(county value / county population for the same year as the data). Value= . indicates missing or suppressed data or value not calculated.

Employment

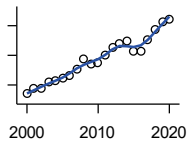


BEA EMPLOYMENT: OTHER SERVICES, EXCEPT PUBLIC ADMINISTRATION

U.S. Bureau of Economic Analysis, Regional Economic Information System (REIS)

Year	County	State of Kansas	Non Metro Kansas	County Rank	Per 1000 or \$ Per Capita
2001	187	92,176	.	61	.
2002	194	95,350	.	63	.
2003	212	95,821	32,629	60	.
2004	204	95,610	.	60	.
2005	197	95,930	32,555	63	.
2006	206	96,413	.	62	.
2007	218	98,444	.	61	.
2008	219	96,705	.	58	.
2009	210	95,534	.	57	.
2010	183	93,302	.	57	.
2011	194	94,865	.	56	.
2012	.	94,977	.	.	.
2013	171	95,471	.	62	.
2014	163	97,806	.	62	.
2015	179	98,041	.	57	.
2016	174	97,219	.	56	.
2017	158	96,568	.	58	.
2018	162	98,645	.	59	.
2019	164	98,638	.	58	.
2020	156	92,245	.	55	.

Income



BEA PER CAPITA PERSONAL INCOME (\$)

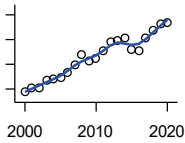
U.S. Bureau of Economic Analysis, Regional Economic Information System (REIS)

Year	County	State of Kansas	Non Metro Kansas	County Rank	Per 1000 or \$ Per Capita
2000	21,961	28,253	23,116	77	.
2001	23,674	29,112	24,576	78	.
2002	23,864	29,248	24,314	62	.
2003	25,869	30,074	26,017	65	.
2004	26,511	30,843	26,583	58	.
2005	27,195	32,545	28,356	77	.
2006	28,200	35,690	29,782	69	.
2007	30,543	38,057	32,034	80	.
2008	33,768	41,257	35,211	74	.
2009	32,033	39,431	33,876	86	.
2010	32,501	39,960	35,795	85	.
2011	35,096	43,015	39,041	83	.
2012	37,745	45,294	39,660	70	.
2013	38,780	46,174	41,747	73	.
2014	39,836	47,013	41,042	65	.
2015	36,227	47,332	40,638	90	.
2016	36,194	47,326	40,797	91	.
2017	40,363	48,756	41,314	66	.
2018	43,626	50,811	43,283	56	.
2019	46,178	52,820	44,491	47	.
2020	47,276	55,677	48,415	66	.

County: county value. Kansas: state value. County Rank: highest county value ranked #1. (\$000): thousands of dollars. Nonmetro Kansas: Kansas total less Metropolitan Areas as defined by the Office of Management and Budget (OMB; released 3/6/2020). Per 1000: For nonmoney amounts, Per 1000=(county value / county population for the same year as the data) x 1000. \$ Per capita=(county value / county population for the same year as the data). Value= . indicates missing or suppressed data or value not calculated.

Income

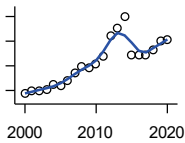
**SOURCES OF PERSONAL INCOME:
TOTAL PERSONAL INCOME (\$000)**



U.S. Bureau of Economic Analysis,
Regional Economic Information System
(REIS)

Year	County	State of Kansas	Non Metro Kansas	County Rank	Per 1000 or \$ Per Capita
2000	143,535	76,105,125	22,273,838	65	21,997.7
2001	153,336	78,664,651	23,411,174	63	23,673.9
2002	153,180	79,365,190	23,000,314	59	23,863.5
2003	166,599	81,890,340	24,494,191	59	25,869.4
2004	170,649	84,335,940	24,924,467	59	26,510.6
2005	174,158	89,346,228	26,452,291	62	27,195.2
2006	182,310	98,610,188	27,661,596	59	28,199.5
2007	198,623	105,943,199	29,715,946	61	30,543.3
2008	218,514	115,852,478	32,614,565	61	33,768.2
2009	206,037	111,697,350	31,394,702	61	32,033.1
2010	211,844	114,239,828	33,291,419	66	32,606.4
2011	226,966	123,558,772	36,221,488	67	35,128.6
2012	244,175	130,948,127	36,696,759	63	37,786.3
2013	247,107	133,979,908	38,513,959	70	38,822.8
2014	253,079	136,878,718	37,680,598	63	39,886.4
2015	228,628	138,336,768	37,081,851	64	36,278.6
2016	228,023	138,533,890	36,930,885	66	36,182.6
2017	254,087	142,729,689	37,104,963	61	40,434.0
2018	268,562	148,955,739	38,589,364	58	43,576.5
2019	281,361	154,961,001	39,424,148	58	46,109.6
2020	285,264	163,462,179	42,618,591	61	44,740.3

**SOURCES OF PERSONAL INCOME:
WAGES AND SALARIES (\$000)**



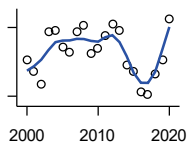
U.S. Bureau of Economic Analysis,
Regional Economic Information System
(REIS)

Year	County	State of Kansas	Non Metro Kansas	County Rank	Per 1000 or \$ Per Capita
2000	57,217	41,766,878	10,254,250	59	8,768.9
2001	60,195	43,269,734	10,518,206	57	9,293.7
2002	59,787	43,875,159	10,696,876	58	9,314.1
2003	60,598	44,488,560	10,894,971	58	9,409.6
2004	64,801	46,702,068	11,333,617	58	10,067.0
2005	64,236	48,537,956	11,614,130	58	10,030.6
2006	67,656	52,083,584	12,299,340	58	10,465.0
2007	73,974	55,442,368	13,093,908	58	11,375.4
2008	79,824	57,623,385	13,647,143	58	12,335.7
2009	78,420	55,605,578	13,199,674	58	12,192.2
2010	81,978	56,089,711	13,345,291	55	12,617.8
2011	87,340	58,104,706	13,856,458	54	13,518.0
2012	104,170	60,616,457	14,473,599	51	16,120.4
2013	110,498	61,872,023	14,781,792	49	17,360.3
2014	119,739	64,457,652	15,385,500	47	18,871.4
2015	88,423	66,729,598	15,454,485	60	14,030.9
2016	88,664	67,253,399	15,422,058	60	14,069.2
2017	88,461	68,830,861	15,731,853	59	14,077.2
2018	93,215	71,580,544	16,311,725	59	15,124.9
2019	100,053	74,404,771	16,882,299	55	16,396.8
2020	100,718	75,798,310	17,251,300	56	15,796.4

County: county value. Kansas: state value. County Rank: highest county value ranked #1. (\$000): thousands of dollars. Nonmetro Kansas: Kansas total less Metropolitan Areas as defined by the Office of Management and Budget (OMB; released 3/6/2020). Per 1000: For nonmoney amounts, Per 1000=(county value / county population for the same year as the data) x 1000. \$ Per capita=(county value / county population for the same year as the data). Value= . indicates missing or suppressed data or value not calculated.

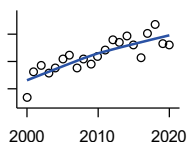
Income

**SOURCES OF PERSONAL INCOME:
PROPRIETORS-FARM (\$000)**



U.S. Bureau of Economic Analysis,
Regional Economic Information System
(REIS)

Year	County	State of Kansas	Non Metro Kansas	County Rank	Per 1000 or \$ Per Capita
2000	8,055	668,539	673,707	38	1,234.5
2001	5,279	779,473	769,336	53	815.0
2002	2,482	145,064	187,033	37	386.7
2003	14,196	1,281,076	1,195,298	38	2,204.3
2004	14,448	1,149,425	938,524	27	2,244.5
2005	10,852	1,609,604	1,469,139	59	1,694.6
2006	9,716	766,047	663,735	36	1,502.9
2007	14,063	1,131,607	1,040,350	35	2,162.5
2008	15,470	1,582,092	1,404,900	53	2,390.7
2009	9,388	1,585,995	1,390,349	69	1,459.6
2010	10,457	2,149,482	2,029,067	69	1,609.5
2011	13,166	3,188,519	2,989,880	69	2,037.8
2012	15,689	2,519,555	2,296,875	65	2,427.9
2013	14,395	4,499,190	4,158,419	85	2,261.6
2014	6,937	2,231,181	2,157,992	71	1,093.3
2015	5,455	1,300,733	1,294,370	54	865.6
2016	936	1,577,060	1,564,511	68	148.5
2017	372	838,480	838,290	63	59.2
2018	4,759	1,050,662	971,690	65	772.2
2019	7,956	998,038	878,247	55	1,303.8
2020	16,884	2,151,349	1,887,881	66	2,648.1



**SOURCES OF PERSONAL INCOME:
PROPRIETORS-NONFARM (\$000)**

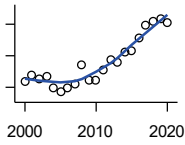
U.S. Bureau of Economic Analysis,
Regional Economic Information System
(REIS)

Year	County	State of Kansas	Non Metro Kansas	County Rank	Per 1000 or \$ Per Capita
2000	8,331	4,580,476	1,493,470	71	1,276.8
2001	13,099	4,510,530	1,855,621	60	2,022.4
2002	14,383	5,036,100	1,966,784	55	2,240.7
2003	12,914	4,719,377	1,916,735	62	2,005.3
2004	13,733	4,003,922	2,073,898	58	2,133.4
2005	15,485	4,455,294	2,200,971	56	2,418.0
2006	16,079	7,343,524	2,694,895	62	2,487.1
2007	13,895	7,280,197	2,436,574	63	2,136.7
2008	15,476	9,255,953	2,971,923	68	2,391.6
2009	14,510	9,323,551	2,858,848	69	2,255.9
2010	16,009	9,658,261	3,498,040	75	2,464.1
2011	17,178	12,196,566	4,186,007	76	2,658.7
2012	18,873	15,773,140	4,446,004	75	2,920.6
2013	18,459	16,441,660	4,492,127	75	2,900.1
2014	19,628	15,954,254	4,455,081	76	3,093.5
2015	17,917	15,536,116	4,386,172	77	2,843.1
2016	15,676	14,075,310	3,783,829	79	2,487.5
2017	20,188	15,371,957	3,908,254	73	3,212.6
2018	21,812	15,716,877	4,238,775	72	3,539.2
2019	18,355	16,705,488	3,921,051	69	3,008.0
2020	17,998	16,718,952	3,823,329	71	2,822.8

County: county value. Kansas: state value. County Rank: highest county value ranked #1. (\$000): thousands of dollars. Nonmetro Kansas: Kansas total less Metropolitan Areas as defined by the Office of Management and Budget (OMB; released 3/6/2020). Per 1000: For nonmoney amounts, Per 1000=(county value / county population for the same year as the data) x 1000. \$ Per capita=(county value / county population for the same year as the data). Value= . indicates missing or suppressed data or value not calculated.

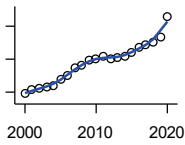
Income

**SOURCES OF PERSONAL INCOME:
DIVIDENDS,INTEREST,RENT(\$000)**



U.S. Bureau of Economic Analysis,
Regional Economic Information System
(REIS)

Year	County	State of Kansas	Non Metro Kansas	County Rank	Per 1000 or \$ Per Capita
2000	37,000	15,916,201	4,736,921	55	5,670.5
2001	38,815	15,770,830	4,699,417	56	5,992.7
2002	37,730	15,111,563	4,316,887	52	5,877.9
2003	38,393	15,370,764	4,360,311	52	5,961.6
2004	34,864	15,820,469	4,251,925	50	5,416.2
2005	33,438	17,147,069	4,485,387	56	5,221.4
2006	34,800	20,117,848	4,945,184	56	5,382.8
2007	35,822	22,269,186	5,526,219	63	5,508.5
2008	41,938	24,972,485	6,180,979	64	6,480.9
2009	37,343	21,453,879	5,308,474	61	5,805.8
2010	37,106	20,861,351	5,414,285	64	5,711.3
2011	40,502	23,387,567	5,781,075	62	6,268.7
2012	43,624	25,689,368	6,389,505	64	6,750.9
2013	43,084	24,832,212	5,984,811	59	6,768.9
2014	46,236	27,412,684	6,403,356	59	7,287.0
2015	46,739	27,244,414	6,423,685	58	7,416.5
2016	50,495	27,293,441	6,389,161	53	8,012.5
2017	54,628	28,385,472	6,700,156	54	8,693.2
2018	55,758	29,953,419	6,772,504	54	9,047.2
2019	56,788	30,820,276	6,957,987	55	9,306.5
2020	55,329	30,283,520	6,844,745	55	8,677.7



**SOURCES OF PERSONAL INCOME:
TRANSFER PAYMENTS (\$000)**

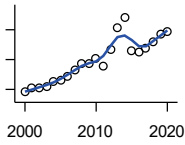
U.S. Bureau of Economic Analysis,
Regional Economic Information System
(REIS)

Year	County	State of Kansas	Non Metro Kansas	County Rank	Per 1000 or \$ Per Capita
2000	28,926	9,650,835	4,036,781	60	4,433.1
2001	31,261	10,549,124	4,355,457	60	4,826.5
2002	32,606	11,208,997	4,553,978	59	5,079.6
2003	32,904	11,709,049	4,702,911	59	5,109.3
2004	33,814	12,040,452	4,802,536	59	5,253.1
2005	37,777	12,696,735	5,059,314	56	5,899.0
2006	39,972	13,642,787	5,455,207	58	6,182.8
2007	44,531	14,686,821	5,775,024	55	6,847.8
2008	46,456	16,552,460	6,322,722	57	7,179.1
2009	49,616	18,025,603	6,790,962	56	7,713.9
2010	50,233	19,189,749	7,089,258	59	7,731.7
2011	51,922	19,625,770	7,255,825	57	8,036.2
2012	50,235	19,354,458	7,148,177	57	7,773.9
2013	51,203	19,639,358	7,185,636	58	8,044.5
2014	51,671	20,380,970	7,399,809	59	8,143.6
2015	53,728	21,116,856	7,623,577	58	8,525.5
2016	57,059	21,884,629	7,886,000	58	9,054.1
2017	58,794	22,559,744	8,062,517	58	9,356.1
2018	60,488	23,628,033	8,393,617	58	9,814.7
2019	63,632	25,050,174	8,845,371	58	10,428.1
2020	75,878	32,319,421	11,074,190	59	11,900.6

County: county value. Kansas: state value. County Rank: highest county value ranked #1. (\$000): thousands of dollars. Nonmetro Kansas: Kansas total less Metropolitan Areas as defined by the Office of Management and Budget (OMB; released 3/6/2020). Per 1000: For nonmoney amounts, Per 1000=(county value / county population for the same year as the data) x 1000. \$ Per capita=(county value / county population for the same year as the data). Value= . indicates missing or suppressed data or value not calculated.

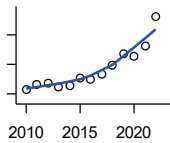
Income

**SOURCES OF PERSONAL INCOME:
LESS SOCIAL INSURANCE (\$000)**



U.S. Bureau of Economic Analysis,
Regional Economic Information System
(REIS)

Year	County	State of Kansas	Non Metro Kansas	County Rank	Per 1000 or \$ Per Capita
2000	9,622	6,655,813	1,663,044	57	1,474.6
2001	10,199	6,869,934	1,740,915	56	1,574.6
2002	10,163	7,008,361	1,778,636	58	1,583.3
2003	10,360	7,172,781	1,821,858	56	1,608.7
2004	11,127	7,556,560	1,904,014	56	1,728.6
2005	11,252	7,911,241	1,986,907	57	1,757.0
2006	11,805	8,406,937	2,090,313	58	1,826.0
2007	12,630	8,806,941	2,180,587	58	1,942.2
2008	13,517	9,207,010	2,299,399	58	2,088.9
2009	13,436	9,002,859	2,248,703	57	2,088.9
2010	14,078	9,235,760	2,321,191	56	2,166.8
2011	13,204	8,515,986	2,139,991	56	2,043.6
2012	15,313	8,816,128	2,195,919	55	2,369.7
2013	18,189	10,225,399	2,540,439	52	2,857.7
2014	19,622	10,609,601	2,635,009	49	3,092.5
2015	15,161	11,028,204	2,663,038	61	2,405.7
2016	15,084	10,915,915	2,604,579	61	2,393.5
2017	15,461	11,224,218	2,669,954	61	2,460.4
2018	16,457	11,749,229	2,797,106	59	2,670.3
2019	17,410	12,245,451	2,889,336	56	2,853.2
2020	17,821	12,715,152	3,027,656	58	2,795.0



HUD MEDIAN FAMILY INCOME

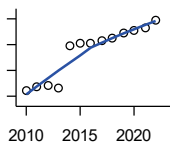
U.S. Department of Housing and Urban
Development (HUD)

Year	County	State of Kansas	Non Metro Kansas	County Rank	Per 1000 or \$ Per Capita
2010	56,400	63,100	.	34	.
2011	58,000	64,300	.	35	.
2012	58,800	65,200	.	35	.
2013	57,500	64,800	.	54	.
2014	57,800	64,400	.	51	.
2015	60,200	66,300	.	49	.
2016	60,100	66,700	.	43	.
2017	61,500	68,500	.	46	.
2018	64,600	73,100	.	45	.
2019	68,400	75,200	.	31	.
2020	67,600	76,500	.	43	.
2021	71,000	77,400	.	36	.
2022	81,200	87,800	.	28	.

County: county value. Kansas: state value. County Rank: highest county value ranked #1. (\$000): thousands of dollars. Nonmetro Kansas: Kansas total less Metropolitan Areas as defined by the Office of Management and Budget (OMB; released 3/6/2020). Per 1000: For nonmoney amounts, Per 1000=(county value / county population for the same year as the data) x 1000. \$ Per capita=(county value / county population for the same year as the data). Value= . indicates missing or suppressed data or value not calculated.

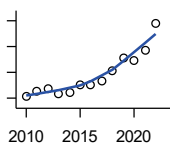
Income

HUD 30% LOW-TO-MEDIUM INCOME (LMI) LIMIT - 4 PERSONS



U.S. Department of Housing and Urban Development (HUD)

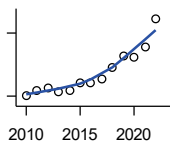
Year	County	State of Kansas	Non Metro Kansas	County Rank	Per 1000 or \$ Per Capita
2010	16,900	.	.	34	.
2011	17,400	.	.	33	.
2012	17,650	.	.	33	.
2013	17,250	.	.	47	.
2014	23,850	.	.	105	.
2015	24,250	.	.	105	.
2016	24,300	.	.	105	.
2017	24,600	.	.	105	.
2018	25,100	21,950	.	105	.
2019	25,750	22,550	.	105	.
2020	26,200	22,950	.	105	.
2021	26,500	23,200	.	105	.
2022	27,750	25,950	.	105	.



HUD 50% LOW-TO-MEDIUM INCOME (LMI) LIMIT - 4 PERSONS

U.S. Department of Housing and Urban Development (HUD)

Year	County	State of Kansas	Non Metro Kansas	County Rank	Per 1000 or \$ Per Capita
2010	28,200	.	.	34	.
2011	29,000	.	.	33	.
2012	29,400	.	.	33	.
2013	28,750	.	.	47	.
2014	28,900	.	.	52	.
2015	30,100	.	.	48	.
2016	30,050	.	.	44	.
2017	30,750	.	.	44	.
2018	32,300	36,550	.	45	.
2019	34,200	37,600	.	31	.
2020	33,800	38,250	.	42	.
2021	35,450	38,700	.	34	.
2022	39,650	43,300	.	30	.



HUD 80% LOW-TO-MEDIUM INCOME (LMI) LIMIT - 4 PERSONS

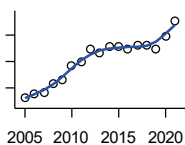
U.S. Department of Housing and Urban Development (HUD)

Year	County	State of Kansas	Non Metro Kansas	County Rank	Per 1000 or \$ Per Capita
2010	45,100	.	.	34	.
2011	46,400	.	.	33	.
2012	47,050	.	.	33	.
2013	46,000	.	.	47	.
2014	46,250	.	.	52	.
2015	48,150	.	.	48	.
2016	48,100	.	.	44	.
2017	49,200	.	.	44	.
2018	51,700	58,500	.	45	.
2019	54,700	60,150	.	31	.
2020	54,100	61,200	.	42	.
2021	56,700	61,900	.	34	.
2022	63,400	69,250	.	30	.

County: county value. Kansas: state value. County Rank: highest county value ranked #1. (\$000): thousands of dollars. Nonmetro Kansas: Kansas total less Metropolitan Areas as defined by the Office of Management and Budget (OMB; released 3/6/2020). Per 1000: For nonmoney amounts, Per 1000=(county value / county population for the same year as the data) x 1000. \$ Per capita=(county value / county population for the same year as the data). Value= . indicates missing or suppressed data or value not calculated.

Banking

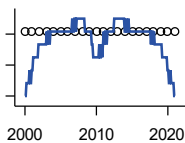
BANK DEPOSITS (1984-2004 in thousands; 2005- in millions)



Federal Deposit Insurance Corporation, Data Book, Operating Banks and Branches

Year	County	State of Kansas	Non Metro Kansas	County Rank	Per 1000 or \$ Per Capita
2005	132	48,304	17,000	61	20.6
2006	138	50,668	17,586	59	21.3
2007	141	54,057	18,517	61	21.7
2008	157	57,869	19,628	58	24.3
2009	166	57,763	20,031	59	25.8
2010	192	60,031	20,678	51	29.6
2011	200	61,094	21,347	51	31.0
2012	224	62,910	22,481	50	34.7
2013	217	64,547	22,795	51	34.1
2014	228	66,538	23,338	51	35.9
2015	229	68,160	23,367	50	36.3
2016	223	70,381	23,420	50	35.4
2017	230	73,329	23,928	49	36.6
2018	231	74,623	24,100	48	37.5
2019	224	76,436	24,488	53	36.7
2020	248	88,563	27,547	50	38.9
2021	277	97,055	30,122	48	43.7

NUMBER OF BANKS



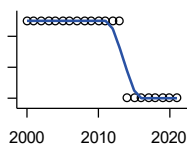
Federal Deposit Insurance Corporation, Data Book, Operating Banks and Branches

Year	County	State of Kansas	Non Metro Kansas	County Rank	Per 1000 or \$ Per Capita
2000	6	410	145	54	.
2001	6	410	136	53	.
2002	6	404	129	52	.
2003	6	397	121	52	.
2004	6	394	112	52	.
2005	6	388	101	51	.
2006	6	385	94	49	.
2007	6	382	91	47	.
2008	6	378	82	46	.
2009	6	374	79	46	.
2010	6	367	70	45	.
2011	6	359	61	44	.
2012	6	348	57	44	.
2013	6	332	45	45	.
2014	6	329	41	44	.
2015	6	320	31	43	.
2016	6	314	24	43	.
2017	6	301	13	43	.
2018	6	289	7	43	.
2019	6	279	3	43	.
2020	6	271	-1	42	.
2021	6	270	-6	41	.

County: county value. Kansas: state value. County Rank: highest county value ranked #1. (\$000): thousands of dollars. Nonmetro Kansas: Kansas total less Metropolitan Areas as defined by the Office of Management and Budget (OMB; released 3/6/2020). Per 1000: For nonmoney amounts, Per 1000=(county value / county population for the same year as the data) x 1000. \$ Per capita=(county value / county population for the same year as the data). Value= . indicates missing or suppressed data or value not calculated.

Banking

NUMBER OF BANKING OFFICES

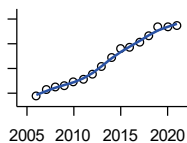


Federal Deposit Insurance Corporation, Data Book, Operating Banks and Branches

Year	County	State of Kansas	Non Metro Kansas	County Rank	Per 1000 or \$ Per Capita
2000	8	1,398	703	53	.
2001	8	1,424	708	54	.
2002	8	1,447	704	54	.
2003	8	1,461	708	54	.
2004	8	1,485	708	54	.
2005	8	1,505	711	54	.
2006	8	1,518	711	54	.
2007	8	1,543	717	55	.
2008	8	1,556	717	55	.
2009	8	1,569	716	55	.
2010	8	1,561	710	53	.
2011	8	1,559	707	52	.
2012	8	1,533	702	51	.
2013	8	1,518	696	52	.
2014	7	1,491	685	56	.
2015	7	1,472	675	54	.
2016	7	1,465	668	55	.
2017	7	1,452	666	55	.
2018	7	1,439	660	55	.
2019	7	1,439	663	56	.
2020	7	1,416	653	56	.
2021	7	1,392	641	55	.

Government

TANGIBLE ASSESSED VALUATION (KDoR, million\$; 2006-)



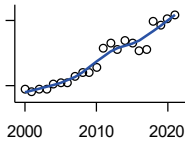
Kansas Department of Revenue, Division of Property Valuation, Statistical Report of Property Assessment and Taxation

Year	County	State of Kansas	Non Metro Kansas	County Rank	Per 1000 or \$ Per Capita
2006	57.4	28,964.3	10,316.9	75	8.9
2007	63.2	30,086.9	10,335.9	70	9.7
2008	64.7	31,000.3	10,856.9	70	10.0
2009	66.1	30,312.3	10,555.6	67	10.3
2010	69.0	29,450.2	10,158.7	66	10.6
2011	70.8	29,963.6	10,572.3	68	11.0
2012	75.1	30,382.9	10,876.2	67	11.6
2013	81.3	30,850.2	11,044.4	65	12.8
2014	88.8	31,783.0	11,388.9	64	14.0
2015	95.6	32,335.7	11,037.8	55	15.2
2016	97.1	33,156.3	10,889.6	52	15.4
2017	100.9	34,754.5	11,439.0	53	16.1
2018	106.7	36,566.1	11,907.1	52	17.3
2019	114.2	38,255.2	12,336.7	52	18.7
2020	113.6	39,333.9	12,219.3	51	17.8
2021	115.1	40,812.0	12,601.5	51	18.2

County: county value. Kansas: state value. County Rank: highest county value ranked #1. (\$000): thousands of dollars. Nonmetro Kansas: Kansas total less Metropolitan Areas as defined by the Office of Management and Budget (OMB; released 3/6/2020). Per 1000: For nonmoney amounts, Per 1000=(county value / county population for the same year as the data) x 1000. \$ Per capita=(county value / county population for the same year as the data). Value= . indicates missing or suppressed data or value not calculated.

Government

SALES TAX COLLECTIONS (\$)

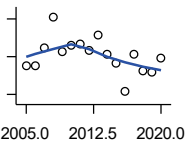


Kansas Department of Revenue. Use tax collections included beginning in calendar year 2018.

Year	County	State of Kansas	Non Metro Kansas	County Rank	Per 1000 or \$ Per Capita
2000	1,827,582	1,475,831,808	432,761,608	65	280,089.2
2001	1,741,389	1,481,026,688	426,316,284	67	268,857.3
2002	1,814,380	1,561,316,864	443,986,950	64	282,657.7
2003	1,822,305	1,626,782,976	461,658,700	66	282,966.6
2004	2,052,842	1,691,899,008	480,309,725	66	318,912.8
2005	2,108,905	1,744,980,352	497,494,867	66	329,310.6
2006	2,158,762	1,851,694,720	532,233,047	66	333,915.2
2007	2,414,745	1,917,546,752	559,319,583	66	371,327.9
2008	2,579,423	1,990,655,744	589,725,773	65	398,612.7
2009	2,586,197	1,866,223,078	548,627,132	61	402,082.9
2010	2,833,619	2,075,193,413	617,409,982	64	436,142.7
2011	3,703,413	2,347,193,367	702,671,534	60	573,195.0
2012	3,949,508	2,456,292,294	740,196,106	61	611,189.7
2013	3,669,933	2,489,204,048	746,226,565	62	576,580.3
2014	4,093,157	2,539,886,774	760,474,019	61	645,099.6
2015	3,958,355	2,642,374,740	750,090,163	60	628,110.8
2016	3,580,317	2,732,611,350	749,030,133	61	568,124.0
2017	3,680,036	2,726,104,521	744,246,491	61	585,620.0
2018	4,982,924	3,277,299,125	893,564,480	59	808,522.5
2019	4,789,424	3,395,631,405	939,607,762	60	784,894.1
2020	5,053,997	3,489,306,791	984,218,931	62	792,659.5
2021	5,259,535	3,981,293,227	1,098,391,422	63	830,103.4

Crime

CRIME INDEX OFFENSES



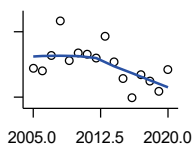
Kansas Bureau of Investigation, Note: Data are aggregated from reports by individual police departments and subject to be incomplete.

Year	County	State of Kansas	Non Metro Kansas	County Rank	Per 1000 or \$ Per Capita
2005	90	111,856	31,630	63	14.1
2006	91	110,032	.	62	14.1
2007	110	111,035	29,921	56	16.9
2008	142	93,996	27,342	51	21.9
2009	105	98,757	27,620	57	16.3
2010	112	98,354	26,909	54	17.2
2011	113	96,638	25,765	52	17.5
2012	106	98,914	26,963	55	16.4
2013	123	93,054	24,488	53	19.3
2014	102	86,323	23,341	55	16.1
2015	93	88,590	21,580	57	14.8
2016	63	90,589	21,565	66	10.0
2017	103	93,091	22,622	51	16.4
2018	85	92,062	20,325	54	13.8
2019	84	87,008	18,547	54	13.8
2020	98	87,346	17,762	51	15.4

County: county value. Kansas: state value. County Rank: highest county value ranked #1. (\$000): thousands of dollars. Nonmetro Kansas: Kansas total less Metropolitan Areas as defined by the Office of Management and Budget (OMB; released 3/6/2020). Per 1000: For nonmoney amounts, Per 1000=(county value / county population for the same year as the data) x 1000. \$ Per capita=(county value / county population for the same year as the data). Value= . indicates missing or suppressed data or value not calculated.

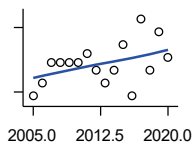
Crime

PROPERTY CRIMES



Kansas Bureau of Investigation, Note: Data are aggregated from reports by individual police departments and subject to be incomplete.

Year	County	State of Kansas	Non Metro Kansas	County Rank	Per 1000 or \$ Per Capita
2005	86	101,414	29,042	60	13.4
2006	84	99,110	.	61	13.0
2007	98	99,632	26,856	55	15.1
2008	130	83,964	24,367	48	20.1
2009	93	87,658	24,825	57	14.5
2010	100	87,926	24,133	54	15.4
2011	99	86,547	23,274	52	15.3
2012	96	88,707	24,220	53	14.9
2013	116	83,551	22,028	50	18.2
2014	92	76,794	20,858	55	14.5
2015	77	77,997	19,138	59	12.2
2016	59	79,549	19,207	66	9.4
2017	81	81,349	19,981	54	12.9
2018	75	79,695	17,769	56	12.2
2019	65	74,314	15,892	56	10.7
2020	85	73,450	15,100	50	13.3



VIOLENT CRIMES

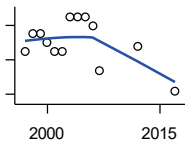
Kansas Bureau of Investigation, Note: Data are aggregated from reports by individual police departments and subject to be incomplete.

Year	County	State of Kansas	Non Metro Kansas	County Rank	Per 1000 or \$ Per Capita
2005	4	10,442	2,588	82	0.6
2006	7	10,922	.	65	1.1
2007	12	11,403	3,065	59	1.8
2008	12	10,032	2,975	63	1.9
2009	12	11,099	2,795	57	1.9
2010	12	10,428	2,776	56	1.8
2011	14	10,091	2,491	53	2.2
2012	10	10,207	2,743	62	1.5
2013	7	9,503	2,460	71	1.1
2014	10	9,529	2,483	65	1.6
2015	16	10,593	2,442	49	2.5
2016	4	11,040	2,358	78	0.6
2017	22	11,742	2,641	37	3.5
2018	10	12,367	2,556	57	1.6
2019	19	12,694	2,655	43	3.1
2020	13	13,896	2,662	56	2.0

County: county value. Kansas: state value. County Rank: highest county value ranked #1. (\$000): thousands of dollars. Nonmetro Kansas: Kansas total less Metropolitan Areas as defined by the Office of Management and Budget (OMB; released 3/6/2020). Per 1000: For nonmoney amounts, Per 1000=(county value / county population for the same year as the data) x 1000. \$ Per capita=(county value / county population for the same year as the data). Value= . indicates missing or suppressed data or value not calculated.

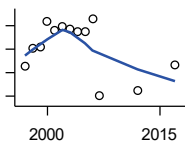
Agriculture

NUMBER OF FARMS



Kansas Agricultural Statistics, Kansas Farm Facts

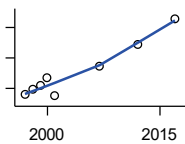
Year	County	State of Kansas	Non Metro Kansas	County Rank	Per 1000 or \$ Per Capita
1997	430	64,000	47,900	77	65.8
1998	450	65,000	48,850	75	69.0
1999	450	65,000	48,850	75	69.4
2000	440	64,000	48,030	75	67.4
2001	430	63,000	47,200	75	66.4
2002	430	63,000	47,200	75	67.0
2003	470	64,500	48,150	68	73.0
2004	470	64,500	48,150	68	73.0
2005	470	64,500	48,150	68	73.4
2006	460	64,000	47,650	69	71.2
2007	408	65,531	48,179	75	62.7
2012	435	61,773	45,655	63	67.3
2017	384	58,569	42,404	70	61.1



TOTAL ACRES HARVESTED

Kansas Agricultural Statistics, Kansas Farm Facts

Year	County	State of Kansas	Non Metro Kansas	County Rank	Per 1000 or \$ Per Capita
1997	142,570	22,846,000	19,430,580	87	21,809.7
1998	150,350	22,143,500	18,943,650	82	23,042.1
1999	150,920	21,708,900	18,581,750	76	23,265.0
2000	161,710	21,639,000	18,528,870	71	24,783.1
2001	158,260	21,847,900	18,689,750	76	24,434.2
2002	159,840	20,230,400	17,089,120	69	24,901.1
2003	158,660	21,827,700	18,661,920	78	24,636.6
2004	157,310	20,876,900	17,721,500	70	24,438.4
2005	157,520	21,936,500	18,807,930	77	24,597.1
2006	162,950	21,412,700	18,291,120	72	25,204.9
2007	130,160	19,886,655	17,164,743	81	20,015.4
2012	132,524	21,043,596	17,966,843	85	20,508.2
2017	143,156	21,837,465	18,543,057	83	22,781.0



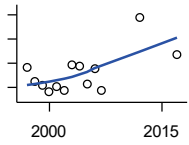
VALUE: LIVESTOCK AND POULTRY (\$000)

Kansas Agricultural Statistics, Kansas Farm Facts

Year	County	State of Kansas	Non Metro Kansas	County Rank	Per 1000 or \$ Per Capita
1997	8,960	2,806,445	2,500,305	98	1,370.7
1998	9,769	2,670,432	2,378,007	96	1,497.2
1999	10,516	2,849,061	2,554,528	94	1,621.1
2000	11,731	2,901,469	2,609,032	84	1,797.9
2001	8,726	2,693,274	2,437,187	95	1,347.2
2007	13,579	9,525,971	.	96	2,088.1
2012	17,158	11,476,571	10,883,216	87	2,655.2
2017	21,434	12,322,289	.	82	3,410.9

County: county value. Kansas: state value. County Rank: highest county value ranked #1. (\$000): thousands of dollars. Nonmetro Kansas: Kansas total less Metropolitan Areas as defined by the Office of Management and Budget (OMB; released 3/6/2020). Per 1000: For nonmoney amounts, Per 1000=(county value / county population for the same year as the data) x 1000. \$ Per capita=(county value / county population for the same year as the data). Value= . indicates missing or suppressed data or value not calculated.

Agriculture



VALUE:FIELD CROPS (\$000)
EXCLUDING GOVERNMENT
PROGRAM PAYMENTS

Kansas Agricultural Statistics, Kansas
Farm Facts

Year	County	State of Kansas	Non Metro Kansas	County Rank	Per 1000 or \$ Per Capita
1997	24,017	4,474,942	3,800,365	91	3,674.0
1998	21,118	3,594,319	3,124,409	82	3,236.5
1999	20,330	3,118,193	2,728,319	65	3,134.0
2000	19,008	2,915,660	2,540,052	70	2,913.1
2001	20,140	3,283,117	2,857,136	77	3,109.5
2002	19,309	3,011,855	2,560,580	66	3,008.1
2003	24,548	3,623,255	3,150,629	69	3,811.8
2004	24,374	3,445,688	2,896,603	63	3,786.5
2005	20,716	3,678,123	3,182,677	80	3,234.9
2006	23,742	4,308,716	3,684,132	75	3,672.4
2007	19,376	4,887,212	.	87	2,979.5
2012	34,476	6,983,993	6,044,551	81	5,335.2
2017	26,884	6,460,437	.	93	4,278.2

County: county value. Kansas: state value. County Rank: highest county value ranked #1. (\$000): thousands of dollars. Nonmetro Kansas: Kansas total less Metropolitan Areas as defined by the Office of Management and Budget (OMB; released 3/6/2020). Per 1000: For nonmoney amounts, Per 1000=(county value / county population for the same year as the data) x 1000. \$ Per capita=(county value / county population for the same year as the data). Value= . indicates missing or suppressed data or value not calculated.