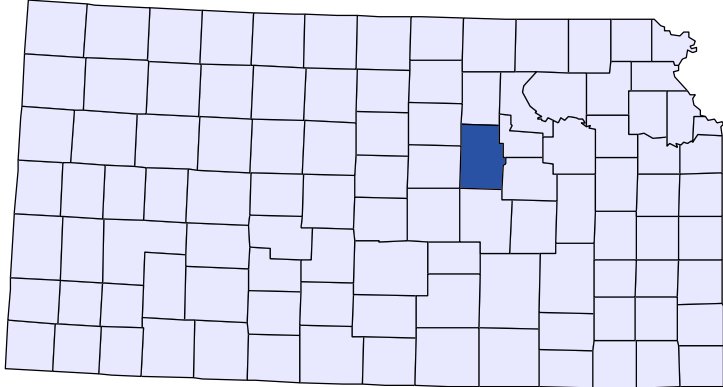




Kansas County Profiles

Dickinson County



The University
of Kansas

Institute for Policy
& Social Research

KU INSTITUTE FOR POLICY
& SOCIAL RESEARCH

The University of Kansas

1541 Lilac Lane, Rm. 607
Blake Hall
Lawrence, KS 66045-3129

Foreword

The Kansas County Profile Report is published by the Institute for Policy & Social Research (IPSR) at the University of Kansas with support from the KU University Center project.* Special thanks to Xanthippe Wedel, senior research data engineer, who compiles and updates the county profiles and Genna Hurd, associate researcher, who provides editorial review.

County reports can be generated for any county in Kansas by simply clicking on the county from the web site:

<https://ipsr.ku.edu/ksdata/kcced/profiles/>

The Kansas County Profile Report contains 12 categories of information: Population, Vital Statistics and Health, Housing, Education, Social Environment, Business, Employment, Income, Banking, Government, Crime, and Agriculture. For more information about Kansas, please refer to the Kansas Statistical Abstract, available online at:

<https://ipsr.ku.edu/ksdata/ksah/>

We are always looking for ways to improve the Kansas County Profile Report and we welcome your suggestions and comments. Please address any correspondence to the Institute for Policy & Social Research, The University of Kansas, 607 Blake Hall, 1541 Lilac Lane, Lawrence, Kansas 66045-3129, e-mail ipsr@ku.edu or call 785-864-3701.

**The KU University Center is a collaborative effort led by the Institute for Policy & Social Research at the University of Kansas. This project is supported by the Economic Development Administration, U.S. Department of Commerce, through its University Center Program.*

The mission of EDA is to lead the federal economic development agenda by promoting innovation and competitiveness, preparing American regions for growth and success in the worldwide economy.

Kansas County Profiles Table of Contents

Population

Total Population (Decennial Census)	1
Estimated Population (Current Population Reports)	2
Urban Population	2
Rural Population	3
Net Migration (Decade Ending...)	3
Median Age	3

Population (Age Groups)

Population Under 18 (Decennial Census)	3
Population Age 18 and Over (Decennial Census)	4
Population Age 65 and Over (Decennial Census)	4
Population Age 85 and Over (Decennial Census)	4

Vital Statistics and Health

Live Births	5
Deaths	5
Marriages	6
Divorces and Annulments	6
Physicians: M.D. Physicians	7
Physicians: D.O. Physicians	7
Dentists	8
Number of Hospitals	8
Number of Hospital Beds	9

Housing

Housing Units (Decennial Census)	9
Housing Units (Estimated)	10
Occupied Housing Units	10
Owner Occupied Housing Units	10
Renter Occupied Housing Units	11
Vacant Housing Units	11
Median Value (\$): Owner Occupied Housing Units	11
Median Contract Rent (\$)	12
Fair Market Rent: 2 Bedrooms	12

Education

Population Age 25 and Over	13
Percent of Population 25+ with High School or Higher Education	13
Percent of Population 25+ with Bachelors Degree or Higher Education	14
Public School Enrollment (FTE- School Year Beginning...)	14
Pupil/Teacher Ratio (School Year Beginning...)	15

Kansas County Profiles Table of Contents

Social Environment

Total Child Care Facilities	15
Preschools	16
Food Stamp Beneficiaries	16
Percent of Population Receiving Food Stamps	17
Estimated Number of People in Poverty	17
Estimated Percent of People in Poverty	18
Estimated Number of Related Children Age 5 to 17 in Families in Poverty	18
Estimated Percent of Related Children Age 5 to 17 in Families in Poverty	19
Estimated Number Under 18 in Poverty	19
Estimated Percent Under 18 in Poverty	20

Business

Establishments: Total	21
Establishments: 1-19 Employees	22
Establishments: 20-99 Employees	22
Establishments: 100-499 Employees	23
Establishments: 500 or More Employees	23
Establishments: Forestry, Fishing, Hunting, and Ag Support	24
Establishments: Mining	24
Establishments: Utilities	25
Establishments: Construction	25
Establishments: Manufacturing	26
Establishments: Wholesale Trade	26
Establishments: Retail Trade	27
Establishments: Transportation and Warehousing	27
Establishments: Information	28
Establishments: Finance and Insurance	28
Establishments: Real Estate, Rental, and Leasing	29
Establishments: Professional, Scientific, and Technical Services	29
Establishments: Management of Companies and Enterprises	30
Establishments: Admin, Support, Waste Management, and Remediation	30
Establishments: Educational Services	31
Establishments: Health Care and Social Assistance	31
Establishments: Arts, Entertainment, and Recreation	32
Establishments: Accommodation and Food Services	32
Establishments: Other Services	33

Kansas County Profiles Table of Contents

Business	
Total Annual Payroll (\$000)	34
Total Annual Payroll (\$000): Forestry, Fishing, Hunting, and Ag Support	35
Total Annual Payroll (\$000): Mining	35
Total Annual Payroll (\$000): Utilities	36
Total Annual Payroll (\$000): Construction	36
Total Annual Payroll (\$000): Manufacturing	37
Total Annual Payroll (\$000): Wholesale Trade	37
Total Annual Payroll (\$000): Retail Trade	38
Total Annual Payroll (\$000): Transportation and Warehousing	38
Total Annual Payroll (\$000): Information	39
Total Annual Payroll (\$000): Finance and Insurance	39
Total Annual Payroll (\$000): Real Estate, Rental, and Leasing	40
Total Annual Payroll (\$000): Professional, Scientific, and Technical Services	40
Total Annual Payroll (\$000): Management of Companies and Enterprises	41
Total Annual Payroll (\$000): Admin, Support, Waste Management, and Remediation	41
Total Annual Payroll (\$000): Educational Services	42
Total Annual Payroll (\$000): Health Care and Social Assistance	42
Total Annual Payroll (\$000): Arts, Entertainment, and Recreation	43
Total Annual Payroll (\$000): Accommodation and Food Services	43
Total Annual Payroll (\$000): Other Services	44
Nominal Taxable Retail Sales (Million\$)	44
Retail Pull Factor	45
Employment	
Civilian Labor Force (BLS - Place of Residence)	46
Employed (BLS - Place of Residence)	47
Unemployed (BLS - Place of Residence)	48
Unemployment Rate (BLS - Place of Residence)	49
BEA Employment: Total (Place of Work)	49
BEA Employment: Farm	50
BEA Employment: Non-Farm	50
Average Wage per Job (\$)	51
BEA Employment: Forestry, Fishing, Hunting, and Ag Support	51
BEA Employment: Mining	52
BEA Employment: Utilities	52
BEA Employment: Construction	53
BEA Employment: Manufacturing	53
BEA Employment: Wholesale Trade	54
BEA Employment: Retail Trade	54
BEA Employment: Transportation and Warehousing	55
BEA Employment: Information	55
BEA Employment: Finance and Insurance	56
BEA Employment: Real Estate, Rental, and Leasing	56
BEA Employment: Professional and Technical Services	57
BEA Employment: Management of Companies and Enterprises	57
BEA Employment: Administrative and Waste Services	58
BEA Employment: Educational Services	58
BEA Employment: Health Care and Social Assistance	59
BEA Employment: Arts, Entertainment, and Recreation	59
BEA Employment: Government and Government Enterprises	60
BEA Employment: Accommodation and Food Services	60
BEA Employment: Other Services, Except Public Administration	61

Kansas County Profiles Table of Contents

Income

BEA Per Capita Personal Income (\$)	61
Sources of Personal Income: Total Personal Income (\$000)	62
Sources of Personal Income: Wages And Salaries (\$000)	62
Sources of Personal Income: Proprietors-Farm (\$000)	63
Sources of Personal Income: Proprietors-Nonfarm (\$000)	63
Sources of Personal Income: Dividends, Interest, Rent (\$000)	64
Sources of Personal Income: Transfer Payments (\$000)	64
Sources of Personal Income: Less Social Insurance (\$000)	65
HUD Median Family Income	65
HUD 30% Low-To-Medium Income (LMI) Limit - 4 Persons	66
HUD 50% Low-To-Medium Income (LMI) Limit - 4 Persons	66
HUD 80% Low-To-Medium Income (LMI) Limit - 4 Persons	66

Banking

Bank Deposits (\$000)	67
Number of Banks	67
Number of Banking Offices	68

Government

Tangible Assessed Valuation (million\$)	68
Sales Tax Collections	69

Crime

Crime Index Offenses	69
Property Crimes	70
Violent Crimes	70

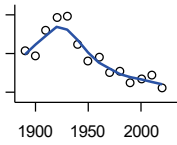
Agriculture

Number of Farms	71
Total Acres Harvested	71
Value: Livestock and Poultry (\$000)	71
Value: Field Crops (\$000) Excluding Government Program Payments	72

Population

DECENNIAL CENSUS:TOTAL POPULATION

U.S. Census Bureau: Decennial Census

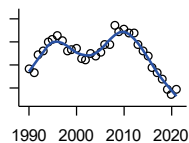


Year	County	State of Kansas	Non Metro Kansas	County Rank	Per 1000 or \$ Per Capita
1890	22,273	1,427,096	968,413	20	.
1900	21,816	1,470,495	981,206	21	.
1910	24,361	1,690,949	1,138,294	16	.
1920	25,777	1,769,257	1,153,525	14	.
1930	25,870	1,880,999	1,180,056	16	.
1940	22,929	1,801,028	1,097,216	19	.
1950	21,190	1,905,299	1,046,823	23	.
1960	21,572	2,178,611	1,021,510	22	.
1970	19,993	2,246,578	958,104	25	.
1980	20,175	2,363,679	980,085	27	.
1990	18,958	2,477,574	939,416	27	.
2000	19,344	2,688,418	959,507	28	.
2010	19,754	2,853,118	929,981	29	.
2020	18,402	2,937,880	892,006	29	.

County: county value. Kansas: state value. County Rank: highest county value ranked #1. (\$000): thousands of dollars. Nonmetro Kansas: Kansas total less Metropolitan Areas as defined by the Office of Management and Budget (OMB; released 3/6/2020). Per 1000: For nonmoney amounts, Per 1000=(county value / county population for the same year as the data) x 1000. \$ Per capita=(county value / county population for the same year as the data). Value= . indicates missing or suppressed data or value not calculated.

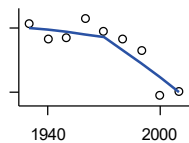
Population

ESTIMATED POPULATION



U.S. Census Bureau

Year	County	State of Kansas	Non Metro Kansas	County Rank	Per 1000 or \$ Per Capita
1990	18,928	2,481,349	938,607	27	.
1991	18,825	2,498,722	938,965	28	.
1992	19,212	2,532,394	942,759	28	.
1993	19,305	2,556,547	947,515	28	.
1994	19,485	2,580,513	952,178	28	.
1995	19,565	2,601,007	957,771	28	.
1996	19,641	2,614,554	959,455	28	.
1997	19,532	2,635,292	960,225	28	.
1998	19,314	2,660,598	960,569	28	.
1999	19,323	2,678,338	960,704	28	.
2000	19,349	2,693,681	959,230	28	.
2001	19,138	2,702,162	952,607	28	.
2002	19,121	2,713,535	945,985	28	.
2003	19,238	2,723,004	941,474	28	.
2004	19,189	2,734,373	937,623	29	.
2005	19,285	2,745,299	932,852	29	.
2006	19,429	2,762,931	928,809	29	.
2007	19,454	2,783,785	927,643	29	.
2008	19,862	2,808,076	926,248	29	.
2009	19,730	2,832,704	926,755	29	.
2010	19,773	2,858,190	930,028	29	.
2011	19,685	2,869,225	927,675	29	.
2012	19,705	2,885,257	925,152	29	.
2013	19,433	2,893,212	922,383	29	.
2014	19,305	2,900,475	917,854	29	.
2015	19,206	2,909,011	912,199	29	.
2016	18,956	2,910,844	905,099	29	.
2017	18,829	2,908,718	897,981	30	.
2018	18,682	2,911,359	892,656	30	.
2019	18,466	2,913,314	887,455	30	.
2020	18,353	2,935,880	889,750	29	.
2021	18,459	2,934,582	886,438	29	.



URBAN POPULATION

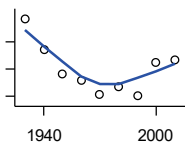
U.S. Census Bureau: Decennial Census

Year	County	State of Kansas	Non Metro Kansas	County Rank	Per 1000 or \$ Per Capita
1930	10,177	729,834	336,666	19	.
1940	9,475	753,941	349,228	22	.
1950	9,550	993,220	398,923	27	.
1960	10,448	1,328,741	457,447	28	.
1970	9,826	1,484,870	450,543	28	.
1980	9,502	1,575,899	474,769	28	.
1990	8,927	1,712,564	464,205	30	.
2000	6,831	1,920,081	488,011	31	.
2010	7,054	2,116,961	485,780	32	.

County: county value. Kansas: state value. County Rank: highest county value ranked #1. (\$000): thousands of dollars. Nonmetro Kansas: Kansas total less Metropolitan Areas as defined by the Office of Management and Budget (OMB; released 3/6/2020). Per 1000: For nonmoney amounts, Per 1000=(county value / county population for the same year as the data) x 1000. \$ Per capita=(county value / county population for the same year as the data). Value= . indicates missing or suppressed data or value not calculated.

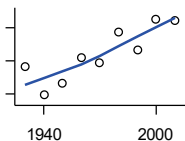
Population

RURAL POPULATION



U.S. Census Bureau

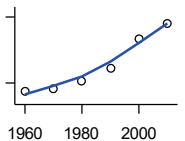
Year	County	State of Kansas	Non Metro Kansas	County Rank	Per 1000 or \$ Per Capita
1930	15,693	1,151,165	843,390	20	.
1940	13,454	1,047,087	747,988	21	.
1950	11,640	912,079	647,900	22	.
1960	11,124	849,870	564,063	21	.
1970	10,167	761,708	509,972	22	.
1980	10,673	787,780	505,873	22	.
1990	10,031	765,010	475,211	25	.
2000	12,513	768,337	471,900	17	.
2010	12,700	736,157	444,201	15	.



NET MIGRATION: DECADE ENDING...

calculated by the Institute for Policy and Social Research, The University of Kansas

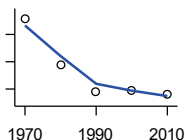
Year	County	State of Kansas	Non Metro Kansas	County Rank	Per 1000 or \$ Per Capita
1930	-2,323	-66,132	-101,869	83	-89.8
1940	-4,079	-192,649	-166,022	98	-177.9
1950	-3,316	-84,329	-158,379	88	-156.5
1960	-1,774	-38,999	-146,640	66	-82.2
1970	-2,134	-119,662	-105,116	88	-106.7
1980	-262	-21,983	-6,184	59	-13.0
1990	-1,321	-61,835	-79,274	88	-69.7
2000	483	68,960	4,247	27	25.0
2010	436	5,578	-50,648	11	22.1



MEDIAN AGE

U.S. Census Bureau: Decennial Census

Year	County	State of Kansas	Non Metro Kansas	County Rank	Per 1000 or \$ Per Capita
1960	35.3	26.9	.	37	.
1970	35.5	28.7	.	48	.
1980	36.2	30.1	.	35	.
1990	37.3	32.9	.	46	.
2000	40.0	35.2	.	47	.
2010	41.4	36.0	.	59	.



POPULATION UNDER 18 (DECENNIAL CENSUS)

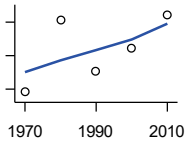
U.S. Census Bureau: Decennial Census

Year	County	State of Kansas	Non Metro Kansas	County Rank	Per 1000 or \$ Per Capita
1970	6,289	746,354	306,227	26	.
1980	5,442	649,035	263,919	27	.
1990	4,945	661,614	250,107	28	.
2000	4,976	712,993	250,757	30	.
2010	4,895	726,939	229,213	29	.

County: county value. Kansas: state value. County Rank: highest county value ranked #1. (\$000): thousands of dollars. Nonmetro Kansas: Kansas total less Metropolitan Areas as defined by the Office of Management and Budget (OMB; released 3/6/2020). Per 1000: For nonmoney amounts, Per 1000=(county value / county population for the same year as the data) x 1000. \$ Per capita=(county value / county population for the same year as the data). Value= . indicates missing or suppressed data or value not calculated.

Population

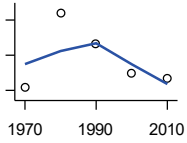
**POPULATION AGE 18 AND OVER
(DECENNIAL CENSUS)**



U.S. Census Bureau: Decennial Census

Year	County	State of Kansas	Non Metro Kansas	County Rank	Per 1000 or \$ Per Capita
1970	13,704	1,500,224	654,288	25	.
1980	14,776	1,714,282	716,684	27	.
1990	14,013	1,815,960	689,309	27	.
2000	14,368	1,975,425	709,154	28	.
2010	14,859	2,126,179	700,768	29	.

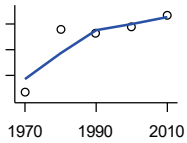
**POPULATION AGE 65 AND OVER
(DECENNIAL CENSUS)**



U.S. Census Bureau: Decennial Census

Year	County	State of Kansas	Non Metro Kansas	County Rank	Per 1000 or \$ Per Capita
1970	3,520	266,201	149,049	18	.
1980	3,940	306,263	164,932	19	.
1990	3,766	342,571	168,579	21	.
2000	3,599	356,229	161,769	21	.
2010	3,566	376,116	154,214	23	.

**POPULATION AGE 85 AND OVER
(DECENNIAL CENSUS)**



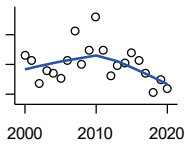
U.S. Census Bureau: Decennial Census

Year	County	State of Kansas	Non Metro Kansas	County Rank	Per 1000 or \$ Per Capita
1970	333	23,899	13,698	18	.
1980	577	33,455	18,804	13	.
1990	565	42,241	22,970	18	.
2000	591	51,770	26,644	20	.
2010	634	59,318	26,197	19	.

County: county value. Kansas: state value. County Rank: highest county value ranked #1. (\$000): thousands of dollars. Nonmetro Kansas: Kansas total less Metropolitan Areas as defined by the Office of Management and Budget (OMB; released 3/6/2020). Per 1000: For nonmoney amounts, Per 1000=(county value / county population for the same year as the data) x 1000. \$ Per capita=(county value / county population for the same year as the data). Value= . indicates missing or suppressed data or value not calculated.

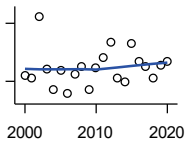
Vital Statistics and Health

BIRTHS (LIVE)



Kansas Department of Health and Environment

Year	County	State of Kansas	Non Metro Kansas	County Rank	Per 1000 or \$ Per Capita
2000	232	39,654	12,980	29	12.0
2001	226	38,832	12,527	29	11.8
2002	195	39,338	12,476	34	10.2
2003	212	39,353	12,342	33	11.0
2004	208	39,553	12,398	32	10.8
2005	201	39,701	12,382	33	10.4
2006	225	40,896	12,726	32	11.6
2007	265	41,951	12,990	28	13.6
2008	221	41,815	12,970	30	11.1
2009	240	41,388	12,949	29	12.2
2010	284	40,439	12,200	27	14.4
2011	240	39,628	12,098	29	12.2
2012	205	40,304	12,217	30	10.4
2013	218	38,805	11,877	30	11.2
2014	222	39,193	12,052	30	11.5
2015	236	39,126	11,836	29	12.3
2016	225	38,048	11,467	28	11.9
2017	208	36,464	10,968	29	11.0
2018	183	36,268	10,826	32	9.8
2019	199	35,395	10,506	31	10.8
2020	188	34,368	10,222	30	10.2



DEATHS

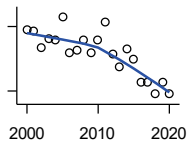
Kansas Department of Health and Environment

Year	County	State of Kansas	Non Metro Kansas	County Rank	Per 1000 or \$ Per Capita
2000	226	24,676	11,175	25	11.7
2001	224	24,590	10,807	25	11.7
2002	287	24,968	11,079	19	15.0
2003	233	24,417	10,615	24	12.1
2004	212	23,720	10,369	25	11.0
2005	231	24,632	10,599	23	12.0
2006	207	24,489	10,538	26	10.7
2007	228	24,413	10,601	24	11.7
2008	235	24,896	10,593	25	11.8
2009	212	23,997	9,938	26	10.7
2010	234	24,428	10,105	24	11.8
2011	245	25,114	10,520	22	12.4
2012	260	25,084	10,259	20	13.2
2013	224	25,347	10,249	25	11.5
2014	219	25,731	10,275	25	11.3
2015	259	26,611	10,539	22	13.5
2016	241	26,129	10,231	25	12.7
2017	235	26,725	10,452	25	12.5
2018	224	27,213	10,389	27	12.0
2019	237	27,312	10,569	25	12.8
2020	240	31,667	11,850	28	13.0

County: county value. Kansas: state value. County Rank: highest county value ranked #1. (\$000): thousands of dollars. Nonmetro Kansas: Kansas total less Metropolitan Areas as defined by the Office of Management and Budget (OMB; released 3/6/2020). Per 1000: For nonmoney amounts, Per 1000=(county value / county population for the same year as the data) x 1000. \$ Per capita=(county value / county population for the same year as the data). Value= . indicates missing or suppressed data or value not calculated.

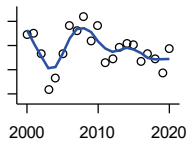
Vital Statistics and Health

MARRIAGES



Kansas Department of Health and Environment

Year	County	State of Kansas	Non Metro Kansas	County Rank	Per 1000 or \$ Per Capita
2000	157	20,426	7,333	26	8.1
2001	156	20,457	7,441	26	8.2
2002	140	19,783	6,794	26	7.3
2003	149	18,722	6,469	26	7.7
2004	147	19,174	6,756	27	7.7
2005	169	18,745	6,481	26	8.8
2006	135	18,836	6,433	28	6.9
2007	138	18,910	6,464	26	7.1
2008	148	18,717	6,283	26	7.5
2009	135	18,268	6,015	26	6.8
2010	147	18,150	5,925	26	7.4
2011	164	17,897	5,977	23	8.3
2012	134	18,154	5,752	26	6.8
2013	123	17,328	5,533	26	6.3
2014	139	17,655	5,535	26	7.2
2015	130	17,595	5,400	26	6.8
2016	108	17,948	5,340	28	5.7
2017	108	17,274	5,163	29	5.7
2018	97	16,362	4,999	28	5.2
2019	108	15,403	4,650	27	5.8
2020	97	14,038	4,066	27	5.3



DIVORCES AND ANNULMENTS

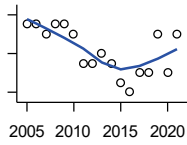
Kansas Department of Health and Environment

Year	County	State of Kansas	Non Metro Kansas	County Rank	Per 1000 or \$ Per Capita
2000	89	10,105	4,000	24	4.6
2001	90	9,885	3,818	24	4.7
2002	73	9,645	3,716	27	3.8
2003	44	8,644	3,464	36	2.3
2004	53	8,759	3,506	31	2.8
2005	73	8,476	3,311	25	3.8
2006	97	9,145	3,387	18	5.0
2007	92	9,347	3,402	21	4.7
2008	104	9,818	3,655	21	5.2
2009	84	10,333	3,463	29	4.3
2010	96	10,579	3,530	20	4.9
2011	66	10,445	3,347	30	3.4
2012	69	9,782	3,040	28	3.5
2013	79	9,085	2,973	22	4.1
2014	82	8,441	2,682	20	4.2
2015	81	8,036	2,704	21	4.2
2016	67	7,198	2,424	25	3.5
2017	73	6,494	2,315	20	3.9
2018	69	6,538	2,269	20	3.7
2019	57	6,398	2,357	27	3.1
2020	77	5,169	1,866	17	4.2

County: county value. Kansas: state value. County Rank: highest county value ranked #1. (\$000): thousands of dollars. Nonmetro Kansas: Kansas total less Metropolitan Areas as defined by the Office of Management and Budget (OMB; released 3/6/2020). Per 1000: For nonmoney amounts, Per 1000=(county value / county population for the same year as the data) x 1000. \$ Per capita=(county value / county population for the same year as the data). Value= . indicates missing or suppressed data or value not calculated.

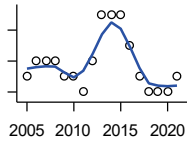
Vital Statistics and Health

PHYSICIANS: M.D. PHYSICIANS



Kansas Department of Health and Environment (1981-2005,2010-);Kansas Health Policy Authority (2006-2009)

Year	County	State of Kansas	Non Metro Kansas	County Rank	Per 1000 or \$ Per Capita
2005	11	4,241	912	34	0.6
2006	11	4,310	953	34	0.6
2007	10	5,309	1,046	37	0.5
2008	11	5,110	1,016	36	0.6
2009	11	5,249	996	34	0.6
2010	10	5,192	979	37	0.5
2011	7	5,243	983	44	0.4
2012	7	5,693	1,033	45	0.4
2013	8	6,106	1,071	39	0.4
2014	7	5,839	951	43	0.4
2015	5	5,703	855	46	0.3
2016	4	4,278	643	49	0.2
2017	6	6,332	1,047	49	0.3
2018	6	6,079	1,065	48	0.3
2019	10	6,435	1,036	38	0.5
2020	6	6,668	1,045	47	0.3
2021	10	6,745	1,042	36	0.5



PHYSICIANS: D.O. PHYSICIANS

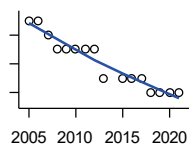
Kansas Department of Health and Environment (1981-2005,2010-);Kansas Health Policy Authority (2006-2009)

Year	County	State of Kansas	Non Metro Kansas	County Rank	Per 1000 or \$ Per Capita
2005	3	553	174	33	0.2
2006	4	508	171	27	0.2
2007	4	569	169	25	0.2
2008	4	558	166	24	0.2
2009	3	564	160	32	0.2
2010	3	583	169	32	0.2
2011	2	502	152	42	0.1
2012	4	718	200	27	0.2
2013	7	829	210	19	0.4
2014	7	817	189	18	0.4
2015	7	819	190	18	0.4
2016	5	632	136	15	0.3
2017	3	579	129	30	0.2
2018	2	871	164	40	0.1
2019	2	951	212	42	0.1
2020	2	1,018	204	42	0.1
2021	3	1,095	217	32	0.2

County: county value. Kansas: state value. County Rank: highest county value ranked #1. (\$000): thousands of dollars. Nonmetro Kansas: Kansas total less Metropolitan Areas as defined by the Office of Management and Budget (OMB; released 3/6/2020). Per 1000: For nonmoney amounts, Per 1000=(county value / county population for the same year as the data) x 1000. \$ Per capita=(county value / county population for the same year as the data). Value= . indicates missing or suppressed data or value not calculated.

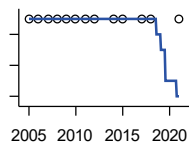
Vital Statistics and Health

DENTISTS



Kansas Department of Health and Environment (1981-2006,2010-);Kansas Health Policy Authority (2007-2009)

Year	County	State of Kansas	Non Metro Kansas	County Rank	Per 1000 or \$ Per Capita
2005	9	1,347	363	24	0.5
2006	9	1,381	361	24	0.5
2007	8	1,335	350	24	0.4
2008	7	1,392	353	28	0.4
2009	7	1,353	350	28	0.4
2010	7	1,401	365	26	0.4
2011	7	1,338	346	28	0.4
2012	7	1,434	392	29	0.4
2013	5	1,212	328	34	0.3
2015	5	1,240	327	32	0.3
2016	5	1,456	350	33	0.3
2017	5	1,467	350	34	0.3
2018	4	1,604	359	39	0.2
2019	4	1,646	355	38	0.2
2020	4	1,646	355	38	0.2
2021	4	1,688	362	39	0.2



NUMBER OF HOSPITALS

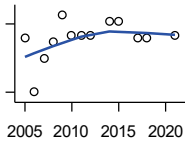
American Hospital Association, American Hospital Association Guide to the Health Care Field

Year	County	State of Kansas	Non Metro Kansas	County Rank	Per 1000 or \$ Per Capita
2005	2	158	105	31	.
2006	2	158	105	31	.
2007	2	159	104	32	.
2008	2	159	104	32	.
2009	2	158	105	32	.
2010	2	158	104	31	.
2011	2	158	103	31	.
2012	2	157	103	31	.
2014	2	156	.	31	.
2015	2	155	103	32	.
2017	2	157	102	30	.
2018	2	154	99	29	.
2021	2	151	.	27	.

County: county value. Kansas: state value. County Rank: highest county value ranked #1. (\$000): thousands of dollars. Nonmetro Kansas: Kansas total less Metropolitan Areas as defined by the Office of Management and Budget (OMB; released 3/6/2020). Per 1000: For nonmoney amounts, Per 1000=(county value / county population for the same year as the data) x 1000. \$ Per capita=(county value / county population for the same year as the data). Value= . indicates missing or suppressed data or value not calculated.

Vital Statistics and Health

NUMBER OF HOSPITAL BEDS

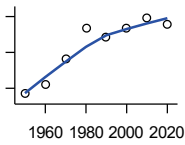


Kansas Department of Health and Environment

Year	County	State of Kansas	Non Metro Kansas	County Rank	Per 1000 or \$ Per Capita
2005	134	12,389	5,687	15	6.9
2006	110	11,992	5,514	22	5.7
2007	125	12,171	5,637	20	6.4
2008	132	12,332	5,700	16	6.6
2009	144	12,283	5,652	16	7.3
2010	135	12,218	5,521	16	6.8
2011	135	12,182	5,335	15	6.9
2012	135	12,002	5,355	15	6.9
2014	141	12,034	.	15	7.3
2015	141	11,926	5,330	15	7.3
2017	134	11,491	4,825	12	7.1
2018	134	11,448	4,583	13	7.2
2021	135	11,199	.	13	7.3

Housing

HOUSING UNITS (DECENNIAL)



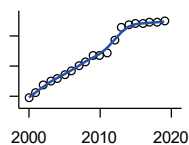
U.S. Census Bureau: Decennial Census

Year	County	State of Kansas	Non Metro Kansas	County Rank	Per 1000 or \$ Per Capita
1950	6,842	586,650	328,210	20	322.9
1960	7,110	672,899	329,380	22	329.6
1970	7,805	789,735	363,824	22	390.4
1980	8,684	955,207	416,877	26	430.4
1990	8,415	1,044,112	417,062	27	443.9
2000	8,686	1,131,395	422,218	27	449.0
2010	8,972	1,233,215	424,050	27	454.2
2020	8,778	1,275,689	413,120	28	477.0

County: county value. Kansas: state value. County Rank: highest county value ranked #1. (\$000): thousands of dollars. Nonmetro Kansas: Kansas total less Metropolitan Areas as defined by the Office of Management and Budget (OMB; released 3/6/2020). Per 1000: For nonmoney amounts, Per 1000=(county value / county population for the same year as the data) x 1000. \$ Per capita=(county value / county population for the same year as the data). Value= . indicates missing or suppressed data or value not calculated.

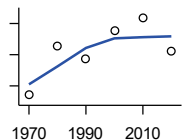
Housing

HOUSING UNITS (ESTIMATED)



U.S. Census Bureau

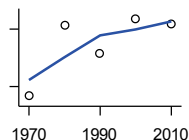
Year	County	State of Kansas	Non Metro Kansas	County Rank	Per 1000 or \$ Per Capita
2000	8,687	1,134,529	422,560	27	449.1
2001	8,726	1,146,858	423,876	27	456.0
2002	8,773	1,160,129	425,089	27	458.8
2003	8,801	1,171,620	425,936	27	457.5
2004	8,821	1,184,702	426,593	27	459.7
2005	8,844	1,195,791	426,964	27	458.6
2006	8,870	1,206,692	426,713	27	456.5
2007	8,905	1,217,608	426,090	27	457.7
2008	8,929	1,225,625	425,768	27	449.6
2009	8,970	1,230,552	424,776	27	454.6
2010	8,974	1,234,456	424,174	27	454.3
2011	8,991	1,238,052	424,549	27	456.7
2012	9,073	1,241,992	425,116	27	460.4
2013	9,157	1,246,675	425,699	27	471.2
2014	9,172	1,253,284	426,269	27	475.1
2015	9,182	1,258,999	426,844	28	478.1
2016	9,184	1,265,684	427,465	28	484.5
2017	9,187	1,273,536	427,746	28	487.9
2018	9,188	1,280,649	428,099	28	491.8
2019	9,197	1,288,401	428,495	28	498.1



OCCUPIED HOUSING UNITS

U.S. Census Bureau: Decennial Census

Year	County	State of Kansas	Non Metro Kansas	County Rank	Per 1000 or \$ Per Capita
1970	7,081	727,364	326,494	24	354.2
1980	7,716	872,239	371,693	26	382.5
1990	7,542	944,726	365,901	27	397.8
2000	7,903	1,037,891	375,313	27	408.6
2010	8,073	1,112,096	370,269	27	408.7
2020	7,644	1,151,360	356,330	28	415.4



OWNER OCCUPIED HOUSING UNITS

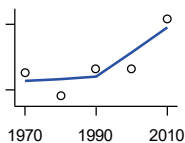
U.S. Census Bureau: Decennial Census

Year	County	State of Kansas	Non Metro Kansas	County Rank	Per 1000 or \$ Per Capita
1970	5,100	502,585	236,338	21	255.1
1980	5,845	612,433	277,096	25	289.7
1990	5,544	641,762	263,099	26	292.4
2000	5,908	718,703	271,350	26	305.4
2010	5,848	753,532	261,763	29	296.0

County: county value. Kansas: state value. County Rank: highest county value ranked #1. (\$000): thousands of dollars. Nonmetro Kansas: Kansas total less Metropolitan Areas as defined by the Office of Management and Budget (OMB; released 3/6/2020). Per 1000: For nonmoney amounts, Per 1000=(county value / county population for the same year as the data) x 1000. \$ Per capita=(county value / county population for the same year as the data). Value= . indicates missing or suppressed data or value not calculated.

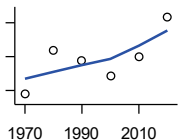
Housing

RENTER OCCUPIED HOUSING UNITS



U.S. Census Bureau: Decennial Census

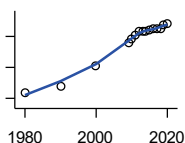
Year	County	State of Kansas	Non Metro Kansas	County Rank	Per 1000 or \$ Per Capita
1970	1,981	224,779	90,156	23	99.1
1980	1,871	259,806	94,597	26	92.7
1990	1,998	302,964	102,802	26	105.4
2000	1,995	319,188	103,963	28	103.1
2010	2,225	358,564	108,506	28	112.6



VACANT HOUSING UNITS

U.S. Census Bureau: Decennial Census

Year	County	State of Kansas	Non Metro Kansas	County Rank	Per 1000 or \$ Per Capita
1970	677	60,058	35,954	18	33.9
1980	939	77,912	41,584	19	46.5
1990	873	99,386	51,161	28	46.0
2000	783	93,309	46,904	27	40.5
2010	899	121,119	53,781	31	45.5
2020	1,134	124,329	56,790	23	61.6



MEDIAN VALUE (\$): OWNER OCCUPIED HOUSING UNITS

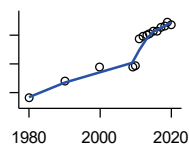
U.S. Census Bureau, Decennial Census (- 2000), (2009 -) American Community Survey five-year average ending in year shown.

Year	County	State of Kansas	Non Metro Kansas	County Rank	Per 1000 or \$ Per Capita
1980	27,600	37,800	.	52	.
1990	35,600	52,200	.	42	.
2000	62,800	83,500	.	34	.
2009	92,500	118,500	.	24	.
2010	97,400	122,600	.	25	.
2011	102,500	125,500	.	20	.
2012	106,400	127,400	.	20	.
2013	106,700	128,400	.	20	.
2014	107,100	129,400	.	23	.
2015	108,200	132,000	.	24	.
2016	110,300	135,300	.	25	.
2017	110,700	139,200	.	26	.
2018	109,500	145,400	.	30	.
2019	114,700	151,900	.	29	.
2020	116,400	157,600	.	30	.

County: county value. Kansas: state value. County Rank: highest county value ranked #1. (\$000): thousands of dollars. Nonmetro Kansas: Kansas total less Metropolitan Areas as defined by the Office of Management and Budget (OMB; released 3/6/2020). Per 1000: For nonmoney amounts, Per 1000=(county value / county population for the same year as the data) x 1000. \$ Per capita=(county value / county population for the same year as the data). Value= . indicates missing or suppressed data or value not calculated.

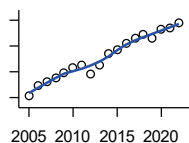
Housing

MEDIAN CONTRACT RENT (\$)



U.S. Census Bureau, Decennial Census (- 2000), (2009 -) American Community Survey five-year average ending in year shown.

Year	County	State of Kansas	Non Metro Kansas	County Rank	Per 1000 or \$ Per Capita
1980	161	219	.	60	.
1990	280	372	.	47	.
2000	377	498	.	52	.
2009	381	491	.	29	.
2010	388	507	.	36	.
2011	577	699	.	37	.
2012	590	715	.	40	.
2013	600	732	.	40	.
2014	608	748	.	46	.
2015	626	757	.	42	.
2016	631	775	.	45	.
2017	659	801	.	38	.
2018	662	831	.	43	.
2019	687	850	.	34	.
2020	677	863	.	43	.



FAIR MARKET RENT: 2 BEDROOMS

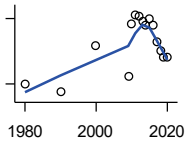
U.S. Department of Housing and Urban Development (HUD)

Year	County	State of Kansas	Non Metro Kansas	County Rank	Per 1000 or \$ Per Capita
2005	455	.	.	68	.
2006	497	.	.	105	.
2007	512	.	.	105	.
2008	525	628	.	105	.
2009	547	653	.	105	.
2010	566	678	.	105	.
2011	575	684	.	105	.
2012	540	660	.	105	.
2013	577	712	.	105	.
2014	622	746	.	105	.
2015	634	756	.	105	.
2016	658	781	.	105	.
2017	681	811	.	105	.
2018	697	815	.	105	.
2019	678	828	.	42	.
2020	714	855	.	105	.
2021	718	874	.	105	.
2022	742	879	.	105	.

County: county value. Kansas: state value. County Rank: highest county value ranked #1. (\$000): thousands of dollars. Nonmetro Kansas: Kansas total less Metropolitan Areas as defined by the Office of Management and Budget (OMB; released 3/6/2020). Per 1000: For nonmoney amounts, Per 1000=(county value / county population for the same year as the data) x 1000. \$ Per capita=(county value / county population for the same year as the data). Value= . indicates missing or suppressed data or value not calculated.

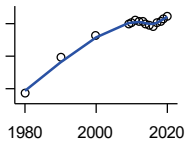
Education

POPULATION AGE 25+



U.S. Census Bureau, Decennial Census (- 2000), (2009 -) American Community Survey five-year average ending in year shown.

Year	County	State of Kansas	Non Metro Kansas	County Rank	Per 1000 or \$ Per Capita
1980	12,795	1,388,102	596,639	.	.
1990	12,731	1,565,936	608,745	.	.
2000	13,156	1,701,207	618,131	.	.
2009	12,865	1,775,427	600,188	.	.
2010	13,354	1,802,904	608,716	.	.
2011	13,434	1,822,400	610,386	.	.
2012	13,425	1,838,079	611,103	.	.
2013	13,379	1,850,010	610,374	.	.
2014	13,334	1,861,894	609,612	.	.
2015	13,394	1,869,698	606,967	.	.
2016	13,339	1,878,495	604,563	.	.
2017	13,182	1,886,741	601,076	.	.
2018	13,106	1,894,675	598,487	.	.
2019	13,044	1,902,279	595,501	.	.
2020	13,045	1,911,990	593,923	.	.



PERCENT HS GRADUATE OR HIGHER AGE 25+

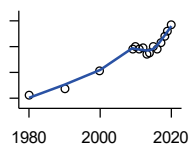
U.S. Census Bureau, Decennial Census (- 2000), (2009 -) American Community Survey five-year average ending in year shown.

Year	County	State of Kansas	Non Metro Kansas	County Rank	Per 1000 or \$ Per Capita
1980	68.5	73.3	.	59	.
1990	79.7	81.3	.	31	.
2000	86.4	86.0	.	30	.
2009	89.9	89.0	.	35	.
2010	90.2	89.2	.	38	.
2011	90.9	89.5	.	28	.
2012	90.7	89.7	.	36	.
2013	90.8	89.8	.	40	.
2014	90.1	90.0	.	50	.
2015	89.5	90.2	.	68	.
2016	89.2	90.3	.	73	.
2017	90.2	90.5	.	66	.
2018	90.6	90.7	.	64	.
2019	91.5	91.0	.	56	.
2020	92.3	91.4	.	50	.

County: county value. Kansas: state value. County Rank: highest county value ranked #1. (\$000): thousands of dollars. Nonmetro Kansas: Kansas total less Metropolitan Areas as defined by the Office of Management and Budget (OMB; released 3/6/2020). Per 1000: For nonmoney amounts, Per 1000=(county value / county population for the same year as the data) x 1000. \$ Per capita=(county value / county population for the same year as the data). Value= . indicates missing or suppressed data or value not calculated.

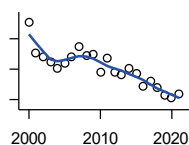
Education

PERCENT BACHELORS DEGREE OR HIGHER AGE 25+



U.S. Census Bureau, Decennial Census (- 2000), (2009 -) American Community Survey five-year average ending in year shown.

Year	County	State of Kansas	Non Metro Kansas	County Rank	Per 1000 or \$ Per Capita
1980	10.5	17.0	.	72	.
1990	11.9	21.1	.	79	.
2000	15.2	25.8	.	82	.
2009	19.4	28.8	.	47	.
2010	19.9	29.3	.	41	.
2011	19.5	29.7	.	54	.
2012	19.7	30.0	.	52	.
2013	18.5	30.3	.	67	.
2014	18.7	30.7	.	71	.
2015	20.0	31.0	.	60	.
2016	19.5	31.6	.	66	.
2017	20.8	32.3	.	56	.
2018	22.1	32.9	.	49	.
2019	22.9	33.4	.	47	.
2020	24.3	33.9	.	36	.



PUBLIC SCHOOL ENROLLMENT (FTE) SCHOOL YEAR BEGINNING...

Kansas State Department of Education

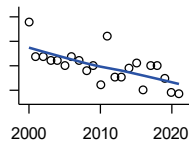
Year	County	State of Kansas	Non Metro Kansas	County Rank	Per 1000 or \$ Per Capita
2000	4,009.0	448,150.8	166,722.5	27	207.2
2001	3,806.3	447,047.1	164,365.0	28	198.9
2002	3,783.1	444,860.3	161,555.4	28	197.9
2003	3,745.7	443,620.6	159,130.2	27	194.7
2004	3,701.7	441,957.2	156,566.3	27	192.9
2005	3,736.2	442,708.4	155,197.2	27	193.7
2006	3,783.8	444,878.7	153,842.3	27	194.8
2007	3,845.0	446,831.3	152,337.1	27	197.6
2008	3,790.5	447,730.0	150,572.7	26	190.8
2009	3,794.8	453,202.5	151,246.8	25	192.3
2010	3,682.3	455,405.0	151,023.8	26	186.4
2011	3,771.5	456,000.5	150,257.9	24	191.6
2012	3,679.2	458,496.4	150,463.0	25	186.7
2013	3,664.3	461,950.0	150,420.9	25	188.6
2014	3,706.3	464,395.4	150,499.4	25	192.0
2015	3,667.9	463,504.0	149,539.3	25	191.0
2016	3,588.8	459,920.3	147,293.5	26	189.3
2017	3,624.0	477,977.9	152,096.3	28	192.5
2018	3,581.4	476,481.7	150,456.8	28	191.7
2019	3,526.2	476,525.1	150,045.2	28	191.0
2020	3,515.4	462,088.0	146,369.6	26	191.0
2021	3,533.2	463,652.4	147,500.4	27	191.4

County: county value. Kansas: state value. County Rank: highest county value ranked #1. (\$000): thousands of dollars. Nonmetro Kansas: Kansas total less Metropolitan Areas as defined by the Office of Management and Budget (OMB; released 3/6/2020). Per 1000: For nonmoney amounts, Per 1000=(county value / county population for the same year as the data) x 1000. \$ Per capita=(county value / county population for the same year as the data). Value= . indicates missing or suppressed data or value not calculated.

Education

PUPIL/TEACHER RATIO SCHOOL YEAR BEGINNING...

Kansas State Department of Education

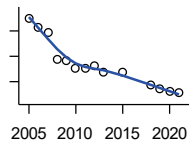


Year	County	State of Kansas	Non Metro Kansas	County Rank	Per 1000 or \$ Per Capita
2000	13.9	15.4	13.9	40	.
2001	13.2	15.3	13.8	51	.
2002	13.2	15.4	13.9	52	.
2003	13.1	15.5	13.8	48	.
2004	13.1	15.3	13.6	45	.
2005	13.0	15.0	13.4	46	.
2006	13.2	14.7	13.2	37	.
2007	13.1	14.6	13.1	39	.
2008	12.9	14.4	12.9	36	.
2009	13.0	14.8	13.2	41	.
2010	12.6	15.2	13.6	55	.
2011	13.6	15.1	13.5	41	.
2012	12.8	15.1	13.5	52	.
2013	12.8	15.1	13.5	49	.
2014	13.0	15.0	13.6	45	.
2015	13.1	15.2	13.9	50	.
2016	12.5	15.1	13.7	60	.
2017	13.0	15.5	13.9	52	.
2018	13.0	15.3	13.8	52	.
2019	12.8	15.2	13.7	51	.
2020	12.5	14.7	13.4	50	.
2021	12.4	14.8	13.5	59	.

Social Environment

CHILD CARE FACILITIES: TOTAL CHILD CARE FACILITIES

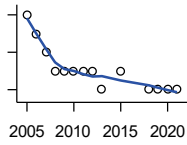
Kansas Department of Health and Environment, Bureau of Adult and Child Care



Year	County	State of Kansas	Non Metro Kansas	County Rank	Per 1000 or \$ Per Capita
2005	90	8,258	3,378	23	4.7
2006	83	8,442	3,429	26	4.3
2007	79	8,241	3,317	26	4.1
2008	58	8,011	3,150	28	2.9
2009	57	7,853	3,066	29	2.9
2010	51	7,354	2,858	32	2.6
2011	50	6,835	2,623	29	2.5
2012	53	6,346	2,409	26	2.7
2013	47	5,754	2,179	26	2.4
2015	47	5,289	2,146	26	2.4
2018	37	4,607	1,904	30	2.0
2019	34	4,287	1,774	30	1.8
2020	32	4,274	1,798	33	1.7
2021	31	4,002	1,700	31	1.7

County: county value. Kansas: state value. County Rank: highest county value ranked #1. (\$000): thousands of dollars. Nonmetro Kansas: Kansas total less Metropolitan Areas as defined by the Office of Management and Budget (OMB; released 3/6/2020). Per 1000: For nonmoney amounts, Per 1000=(county value / county population for the same year as the data) x 1000. \$ Per capita=(county value / county population for the same year as the data). Value= . indicates missing or suppressed data or value not calculated.

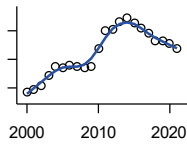
Social Environment



CHILD CARE FACILITIES: PRESCHOOLS

Kansas Department of Health and Environment, Bureau of Adult and Child Care

Year	County	State of Kansas	Non Metro Kansas	County Rank	Per 1000 or \$ Per Capita
2005	7	243	140	6	0.4
2006	6	221	127	10	0.3
2007	5	208	119	10	0.3
2008	4	204	114	16	0.2
2009	4	194	107	14	0.2
2010	4	194	112	13	0.2
2011	4	209	123	17	0.2
2012	4	201	121	14	0.2
2013	3	140	84	16	0.2
2015	4	185	113	14	0.2
2018	3	150	94	19	0.2
2019	3	134	83	17	0.2
2020	3	126	78	13	0.2
2021	3	120	74	13	0.2



FOOD STAMP BENEFICIARIES

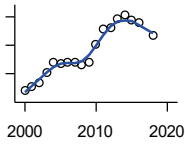
Kansas Social and Rehabilitation Services

Year	County	State of Kansas	Non Metro Kansas	County Rank	Per 1000 or \$ Per Capita
2000	544	110,619	44,825	36	28.1
2001	582	117,241	46,741	36	30.4
2002	640	131,726	52,342	36	33.5
2003	783	155,908	61,280	35	40.7
2004	897	167,971	65,852	35	46.7
2005	878	175,710	67,261	35	45.5
2006	915	182,821	67,487	35	47.1
2007	904	184,035	66,979	34	46.5
2008	877	187,377	67,160	34	44.2
2009	908	208,007	73,637	35	46.0
2010	1,158	259,609	90,919	34	58.6
2011	1,397	296,542	101,155	33	71.0
2012	1,416	303,257	102,478	34	71.9
2013	1,528	316,424	105,345	33	78.6
2014	1,576	301,377	100,761	33	81.6
2015	1,506	277,614	93,353	32	78.4
2016	1,441	258,412	88,343	32	76.0
2017	1,372	239,592	82,070	32	72.9
2018	1,252	219,738	75,208	32	67.0
2019	1,259	205,261	69,899	31	68.2
2020	1,214	198,457	66,721	31	66.0
2021	1,148	203,424	68,883	32	62.2

County: county value. Kansas: state value. County Rank: highest county value ranked #1. (\$000): thousands of dollars. Nonmetro Kansas: Kansas total less Metropolitan Areas as defined by the Office of Management and Budget (OMB; released 3/6/2020). Per 1000: For nonmoney amounts, Per 1000=(county value / county population for the same year as the data) x 1000. \$ Per capita=(county value / county population for the same year as the data). Value= . indicates missing or suppressed data or value not calculated.

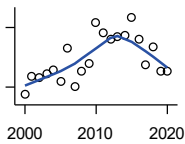
Social Environment

PERCENT OF POPULATION RECEIVING FOOD STAMPS



U.S. Dept. of Agriculture Food and Nutrition Service (1990-1997); Kansas Social and Rehabilitation Services (1998-)

Year	County	State of Kansas	Non Metro Kansas	County Rank	Per 1000 or \$ Per Capita
2000	2.8	4.1	.	79	.
2001	3.1	4.3	.	75	.
2002	3.4	4.9	.	74	.
2003	4.1	5.7	.	68	.
2004	4.8	6.2	.	60	.
2005	4.7	6.4	.	67	.
2006	4.8	6.6	.	65	.
2007	4.8	6.6	.	64	.
2008	4.6	6.7	.	65	.
2009	4.8	7.4	.	65	.
2010	6.1	9.1	.	67	.
2011	7.1	10.3	.	59	.
2012	7.2	10.5	.	56	.
2013	7.8	10.9	.	47	.
2014	8.1	10.4	.	45	.
2015	7.8	9.6	.	42	.
2016	7.6	8.9	.	40	.
2018	6.7	7.5	.	45	.



ESTIMATED NUMBER OF PEOPLE IN POVERTY

U.S. Census Bureau, Small Area Income and Poverty Estimates

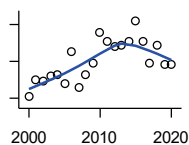
Year	County	State of Kansas	Non Metro Kansas	County Rank	Per 1000 or \$ Per Capita
2000	1,523	235,087	98,984	32	78.7
2001	1,703	252,134	106,257	32	89.0
2002	1,699	265,673	107,542	32	88.9
2003	1,731	278,163	107,323	32	90.0
2004	1,769	297,733	111,534	32	92.2
2005	1,656	310,667	118,768	34	85.9
2006	1,994	327,102	123,700	32	102.6
2007	1,599	301,828	111,953	33	82.2
2008	1,761	307,804	113,015	33	88.7
2009	1,839	359,692	123,394	32	93.2
2010	2,250	374,677	131,502	32	113.9
2011	2,147	383,859	134,912	32	109.1
2012	2,084	392,095	133,800	33	105.8
2013	2,104	391,718	134,067	33	108.3
2014	2,115	381,506	130,213	33	109.6
2015	2,302	366,069	123,073	31	119.9
2016	2,084	343,773	121,314	31	109.9
2017	1,829	335,371	116,854	33	97.1
2018	2,006	336,892	114,490	32	107.4
2019	1,764	319,931	110,692	33	95.5
2020	1,760	300,931	100,998	31	95.6

County: county value. Kansas: state value. County Rank: highest county value ranked #1. (\$000): thousands of dollars. Nonmetro Kansas: Kansas total less Metropolitan Areas as defined by the Office of Management and Budget (OMB; released 3/6/2020). Per 1000: For nonmoney amounts, Per 1000=(county value / county population for the same year as the data) x 1000. \$ Per capita=(county value / county population for the same year as the data). Value= . indicates missing or suppressed data or value not calculated.

Social Environment

ESTIMATED % OF PEOPLE IN POVERTY

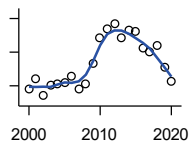
U.S. Census Bureau, Small Area Income and Poverty Estimates



Year	County	State of Kansas	Non Metro Kansas	County Rank	Per 1000 or \$ Per Capita
2000	8.1	8.9	.	92	.
2001	9.0	9.5	.	92	.
2002	8.9	10.0	.	91	.
2003	9.2	10.4	.	86	.
2004	9.3	11.1	.	90	.
2005	8.8	11.7	.	97	.
2006	10.5	12.2	.	87	.
2007	8.6	11.2	.	93	.
2008	9.3	11.3	.	92	.
2009	9.9	13.2	.	92	.
2010	11.6	13.5	.	69	.
2011	11.1	13.8	.	83	.
2012	10.8	14.0	.	82	.
2013	10.9	13.9	.	83	.
2014	11.1	13.5	.	77	.
2015	12.2	12.9	.	51	.
2016	11.1	12.2	.	73	.
2017	9.9	11.9	.	92	.
2018	10.9	11.9	.	78	.
2019	9.8	11.3	.	85	.
2020	9.8	10.6	.	79	.

EST. NUMBER OF RELATED CHILDREN AGE 5 TO 17 IN FAMILIES IN POVERTY

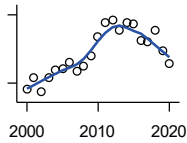
U.S. Census Bureau, Small Area Income and Poverty Estimates



Year	County	State of Kansas	Non Metro Kansas	County Rank	Per 1000 or \$ Per Capita
2000	342	50,388	21,854	31	17.7
2001	369	53,755	23,094	30	19.3
2002	320	52,453	21,423	33	16.7
2003	351	55,419	21,809	32	18.2
2004	354	59,392	22,313	32	18.4
2005	360	60,203	24,244	32	18.7
2006	377	64,427	25,326	32	19.4
2007	340	61,149	23,639	33	17.5
2008	356	59,842	22,661	32	17.9
2009	417	71,850	26,251	32	21.1
2010	491	81,077	29,804	33	24.9
2011	520	82,311	29,306	31	26.4
2012	536	87,594	29,781	32	27.2
2013	494	84,325	29,253	33	25.4
2014	514	83,873	29,354	31	26.6
2015	510	78,192	27,482	30	26.6
2016	464	67,810	25,074	29	24.5
2017	449	67,873	25,032	31	23.8
2018	471	68,153	24,928	30	25.2
2019	405	64,613	23,117	32	21.9
2020	363	59,792	21,143	31	19.7

County: county value. Kansas: state value. County Rank: highest county value ranked #1. (\$000): thousands of dollars. Nonmetro Kansas: Kansas total less Metropolitan Areas as defined by the Office of Management and Budget (OMB; released 3/6/2020). Per 1000: For nonmoney amounts, Per 1000=(county value / county population for the same year as the data) x 1000. \$ Per capita=(county value / county population for the same year as the data). Value= . indicates missing or suppressed data or value not calculated.

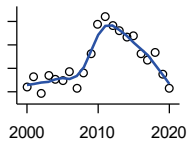
Social Environment



EST. % OF RELATED CHILDREN AGE 5 TO 17 IN FAMILIES IN POVERTY

U.S. Census Bureau, Small Area Income and Poverty Estimates

Year	County	State of Kansas	Non Metro Kansas	County Rank	Per 1000 or \$ Per Capita
2000	9.5	10.0	.	87	.
2001	10.5	10.8	.	82	.
2002	9.2	10.5	.	88	.
2003	10.5	11.3	.	77	.
2004	11.1	12.5	.	79	.
2005	11.3	12.8	.	83	.
2006	11.8	13.2	.	81	.
2007	11.0	12.6	.	86	.
2008	11.5	12.3	.	82	.
2009	12.4	14.7	.	83	.
2010	14.1	15.9	.	79	.
2011	15.3	16.2	.	62	.
2012	15.5	17.2	.	63	.
2013	14.6	16.5	.	68	.
2014	15.3	16.4	.	65	.
2015	15.2	15.3	.	57	.
2016	13.7	13.2	.	69	.
2017	13.6	13.4	.	76	.
2018	14.6	13.5	.	70	.
2019	12.8	12.9	.	73	.
2020	11.7	11.9	.	82	.



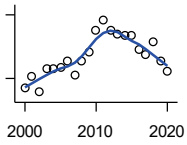
ESTIMATED NUMBER UNDER 18 IN POVERTY

U.S. Census Bureau, Small Area Income and Poverty Estimates

Year	County	State of Kansas	Non Metro Kansas	County Rank	Per 1000 or \$ Per Capita
2000	523	82,619	34,843	33	27.0
2001	565	87,487	36,724	32	29.5
2002	491	84,181	32,870	33	25.7
2003	567	93,896	36,004	33	29.5
2004	554	98,641	36,272	33	28.9
2005	550	100,254	39,118	33	28.5
2006	585	105,193	41,054	33	30.1
2007	516	100,242	37,881	34	26.5
2008	578	100,146	37,552	33	29.1
2009	660	118,187	42,682	32	33.5
2010	790	129,009	46,428	32	40.0
2011	821	133,478	46,832	32	41.7
2012	781	135,261	46,294	33	39.6
2013	763	131,251	44,952	33	39.3
2014	733	125,562	43,933	31	38.0
2015	736	119,994	41,828	31	38.3
2016	663	100,996	37,387	30	35.0
2017	637	102,858	37,955	32	33.8
2018	668	102,616	36,991	32	35.8
2019	574	97,920	34,797	33	31.1
2020	514	88,491	30,767	32	27.9

County: county value. Kansas: state value. County Rank: highest county value ranked #1. (\$000): thousands of dollars. Nonmetro Kansas: Kansas total less Metropolitan Areas as defined by the Office of Management and Budget (OMB; released 3/6/2020). Per 1000: For nonmoney amounts, Per 1000=(county value / county population for the same year as the data) x 1000. \$ Per capita=(county value / county population for the same year as the data). Value= . indicates missing or suppressed data or value not calculated.

Social Environment



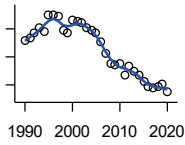
ESTIMATED PERCENT UNDER 18 IN POVERTY

U.S. Census Bureau, Small Area Income and Poverty Estimates

Year	County	State of Kansas	Non Metro Kansas	County Rank	Per 1000 or \$ Per Capita
2000	11.1	11.9	.	89	.
2001	12.2	12.7	.	84	.
2002	10.7	12.1	.	85	.
2003	12.9	13.8	.	74	.
2004	12.9	14.6	.	80	.
2005	13.0	15.2	.	86	.
2006	13.7	15.4	.	83	.
2007	12.3	14.7	.	87	.
2008	13.6	14.6	.	82	.
2009	14.5	17.1	.	84	.
2010	16.6	18.1	.	70	.
2011	17.5	18.8	.	63	.
2012	16.6	19.0	.	68	.
2013	16.2	18.4	.	71	.
2014	16.0	17.6	.	68	.
2015	16.1	16.9	.	63	.
2016	14.7	14.3	.	70	.
2017	14.3	14.7	.	78	.
2018	15.4	14.8	.	71	.
2019	13.7	14.3	.	75	.
2020	12.7	13.0	.	76	.

County: county value. Kansas: state value. County Rank: highest county value ranked #1. (\$000): thousands of dollars. Nonmetro Kansas: Kansas total less Metropolitan Areas as defined by the Office of Management and Budget (OMB; released 3/6/2020). Per 1000: For nonmoney amounts, Per 1000=(county value / county population for the same year as the data) x 1000. \$ Per capita=(county value / county population for the same year as the data). Value= . indicates missing or suppressed data or value not calculated.

Business



ESTABLISHMENTS TOTAL COUNTY BUSINESS PATTERNS

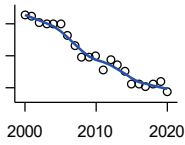
U.S. Census Bureau, County Business Patterns. Beginning with the 2017 data, any tabulation with fewer than 3 establishments were omitted from the release. Data for these establishments are included in the broader total.

Year	County	State of Kansas	Non Metro Kansas	County Rank	Per 1000 or \$ Per Capita
1990	529	65,858	26,802	26	27.9
1991	533	65,941	26,750	24	28.3
1992	543	67,630	27,229	24	28.3
1993	551	68,930	27,655	24	28.5
1994	545	69,822	27,763	24	28.0
1995	574	70,894	28,111	23	29.3
1996	574	72,017	28,353	23	29.2
1997	573	73,924	28,884	25	29.3
1998	547	74,019	28,749	26	28.3
1999	542	74,486	28,536	26	28.0
2000	565	74,939	28,475	25	29.2
2001	564	74,565	28,282	25	29.5
2002	560	75,077	28,183	24	29.3
2003	552	74,972	27,998	24	28.7
2004	547	75,827	28,009	24	28.5
2005	543	76,173	27,830	24	28.2
2006	528	76,446	27,653	26	27.2
2007	506	77,157	27,736	29	26.0
2008	489	76,096	27,314	29	24.6
2009	486	74,698	26,839	28	24.6
2010	487	74,301	26,739	27	24.7
2011	468	73,598	26,555	28	23.8
2012	483	73,944	26,534	27	24.5
2013	474	73,816	26,393	27	24.4
2014	467	74,055	26,292	27	24.2
2015	455	74,526	26,355	28	23.7
2016	447	74,884	26,172	28	23.6
2017	445	74,947	26,093	29	23.6
2018	446	74,559	25,802	27	23.9
2019	451	74,292	25,536	27	24.4
2020	437	73,982	25,178	27	23.7

County: county value. Kansas: state value. County Rank: highest county value ranked #1. (\$000): thousands of dollars. Nonmetro Kansas: Kansas total less Metropolitan Areas as defined by the Office of Management and Budget (OMB; released 3/6/2020). Per 1000: For nonmoney amounts, Per 1000=(county value / county population for the same year as the data) x 1000. \$ Per capita=(county value / county population for the same year as the data). Value= . indicates missing or suppressed data or value not calculated.

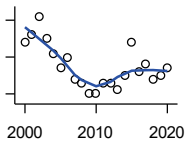
Business

**ESTABLISHMENTS: 1-19
EMPLOYEES**



U.S. Census Bureau, County Business Patterns. Beginning with the 2017 data, any tabulation with fewer than 3 establishments were omitted from the release. Data for these establishments are included in the broader total.

Year	County	State of Kansas	Non Metro Kansas	County Rank	Per 1000 or \$ Per Capita
2000	514	64,527	25,381	23	26.6
2001	511	64,176	25,248	23	26.7
2002	502	64,886	25,208	25	26.3
2003	500	64,714	25,020	24	26.0
2004	499	65,554	24,995	24	26.0
2005	499	65,796	24,839	24	25.9
2006	481	65,764	24,589	25	24.8
2007	465	66,446	24,701	26	23.9
2008	448	65,322	24,257	27	22.6
2009	448	64,128	23,851	26	22.7
2010	449	64,015	23,857	26	22.7
2011	428	63,251	23,571	27	21.7
2012	443	63,519	23,575	27	22.5
2013	436	63,197	23,396	27	22.4
2014	426	63,113	23,229	27	22.1
2015	405	63,280	23,227	27	21.1
2016	405	63,630	23,117	27	21.4
2017	401	63,619	23,022	27	21.3
2018	406	63,233	22,745	27	21.7
2019	409	62,904	22,489	26	22.1
2020	393	62,634	22,173	27	21.4



**ESTABLISHMENTS: 20-99
EMPLOYEES**

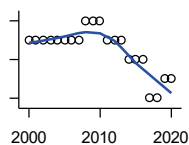
U.S. Census Bureau, County Business Patterns. Beginning with the 2017 data, any tabulation with fewer than 3 establishments were omitted from the release. Data for these establishments are included in the broader total.

Year	County	State of Kansas	Non Metro Kansas	County Rank	Per 1000 or \$ Per Capita
2000	44	8,714	2,653	30	2.3
2001	46	8,692	2,593	31	2.4
2002	51	8,582	2,554	27	2.7
2003	45	8,642	2,568	30	2.3
2004	41	8,658	2,590	31	2.1
2005	37	8,685	2,553	32	1.9
2006	40	8,922	2,612	32	2.1
2007	34	8,938	2,574	35	1.7
2008	33	8,939	2,587	34	1.7
2009	30	8,848	2,551	37	1.5
2010	30	8,612	2,454	35	1.5
2011	33	8,668	2,540	34	1.7
2012	33	8,700	2,500	35	1.7
2013	31	8,870	2,541	35	1.6
2014	35	9,121	2,590	33	1.8
2015	44	9,374	2,664	30	2.3
2016	36	9,412	2,596	33	1.9
2017	38	9,487	2,638	31	2.0
2018	34	9,485	2,621	35	1.8
2019	35	9,485	2,591	34	1.9
2020	37	9,471	2,545	32	2.0

County: county value. Kansas: state value. County Rank: highest county value ranked #1. (\$000): thousands of dollars. Nonmetro Kansas: Kansas total less Metropolitan Areas as defined by the Office of Management and Budget (OMB; released 3/6/2020). Per 1000: For nonmoney amounts, Per 1000=(county value / county population for the same year as the data) x 1000. \$ Per capita=(county value / county population for the same year as the data). Value= . indicates missing or suppressed data or value not calculated.

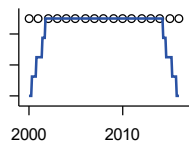
Business

**ESTABLISHMENTS: 100-499
EMPLOYEES**



U.S. Census Bureau, County Business Patterns. Beginning with the 2017 data, any tabulation with fewer than 3 establishments were omitted from the release. Data for these establishments are included in the broader total.

Year	County	State of Kansas	Non Metro Kansas	County Rank	Per 1000 or \$ Per Capita
2000	6	1,555	409	35	0.3
2001	6	1,555	406	35	0.3
2002	6	1,464	386	33	0.3
2003	6	1,470	378	34	0.3
2004	6	1,463	388	34	0.3
2005	6	1,537	400	36	0.3
2006	6	1,598	407	33	0.3
2007	6	1,602	416	36	0.3
2008	7	1,653	421	32	0.4
2009	7	1,551	394	34	0.4
2010	7	1,513	382	30	0.4
2011	6	1,523	395	33	0.3
2012	6	1,567	410	34	0.3
2013	6	1,581	407	34	0.3
2014	5	1,641	421	36	0.3
2015	5	1,693	414	37	0.3
2016	5	1,671	406	37	0.3
2017	3	1,653	.	42	0.2
2018	3	1,650	.	45	0.2
2019	4	1,718	.	37	0.2
2020	4	1,692	.	36	0.2



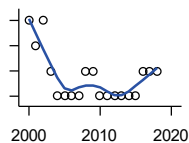
**ESTABLISHMENTS: 500 OR MORE
EMPLOYEES**

U.S. Census Bureau, County Business Patterns. Beginning with the 2017 data, any tabulation with fewer than 3 establishments were omitted from the release. Data for these establishments are included in the broader total.

Year	County	State of Kansas	Non Metro Kansas	County Rank	Per 1000 or \$ Per Capita
2000	1	143	32	31	0.1
2001	1	142	35	32	0.1
2002	1	145	35	29	0.1
2003	1	146	32	29	0.1
2004	1	152	36	29	0.1
2005	1	155	38	31	0.1
2006	1	162	45	31	0.1
2007	1	171	45	32	0.1
2008	1	182	49	33	0.1
2009	1	171	43	33	0.1
2010	1	161	46	33	0.1
2011	1	156	49	33	0.1
2012	1	158	49	34	0.1
2013	1	168	49	33	0.1
2014	1	180	52	34	0.1
2015	1	179	50	33	0.1
2016	1	171	53	33	0.1

County: county value. Kansas: state value. County Rank: highest county value ranked #1. (\$000): thousands of dollars. Nonmetro Kansas: Kansas total less Metropolitan Areas as defined by the Office of Management and Budget (OMB; released 3/6/2020). Per 1000: For nonmoney amounts, Per 1000=(county value / county population for the same year as the data) x 1000. \$ Per capita=(county value / county population for the same year as the data). Value= . indicates missing or suppressed data or value not calculated.

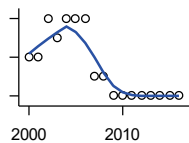
Business



ESTABLISHMENTS: FORESTRY, FISHING, HUNTING, AND AG SUPPORT

U.S. Census Bureau, County Business Patterns. Beginning with the 2017 data, any tabulation with fewer than 3 establishments were omitted from the release. Data for these establishments are included in the broader total.

Year	County	State of Kansas	Non Metro Kansas	County Rank	Per 1000 or \$ Per Capita
2000	5	190	149	13	0.3
2001	4	217	168	19	0.2
2002	5	224	176	11	0.3
2003	3	217	173	28	0.2
2004	2	211	165	53	0.1
2005	2	188	148	45	0.1
2006	2	193	158	48	0.1
2007	2	212	170	52	0.1
2008	3	197	158	29	0.2
2009	3	191	154	28	0.2
2010	2	192	161	50	0.1
2011	2	193	157	50	0.1
2012	2	204	164	50	0.1
2013	2	208	166	54	0.1
2014	2	194	152	55	0.1
2015	2	192	149	51	0.1
2016	3	181	142	23	0.2
2017	3	194	.	26	0.2
2018	3	195	.	26	0.2



ESTABLISHMENTS: MINING

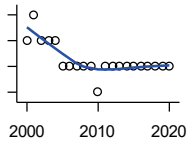
U.S. Census Bureau, County Business Patterns. Beginning with the 2017 data, any tabulation with fewer than 3 establishments were omitted from the release. Data for these establishments are included in the broader total.

Year	County	State of Kansas	Non Metro Kansas	County Rank	Per 1000 or \$ Per Capita
2000	4	868	619	44	0.2
2001	4	878	622	45	0.2
2002	6	847	615	36	0.3
2003	5	864	633	40	0.3
2004	6	880	647	38	0.3
2005	6	941	695	38	0.3
2006	6	991	734	38	0.3
2007	3	1,000	759	59	0.2
2008	3	1,047	799	60	0.2
2009	2	1,016	772	70	0.1
2010	2	1,009	762	72	0.1
2011	2	1,013	763	73	0.1
2012	2	1,048	789	74	0.1
2013	2	1,060	802	76	0.1
2014	2	1,102	828	76	0.1
2015	2	1,069	810	76	0.1
2016	2	990	747	77	0.1

County: county value. Kansas: state value. County Rank: highest county value ranked #1. (\$000): thousands of dollars. Nonmetro Kansas: Kansas total less Metropolitan Areas as defined by the Office of Management and Budget (OMB; released 3/6/2020). Per 1000: For nonmoney amounts, Per 1000=(county value / county population for the same year as the data) x 1000. \$ Per capita=(county value / county population for the same year as the data). Value= . indicates missing or suppressed data or value not calculated.

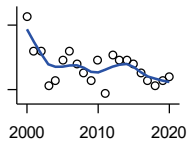
Business

ESTABLISHMENTS: UTILITIES



U.S. Census Bureau, County Business Patterns. Beginning with the 2017 data, any tabulation with fewer than 3 establishments were omitted from the release. Data for these establishments are included in the broader total.

Year	County	State of Kansas	Non Metro Kansas	County Rank	Per 1000 or \$ Per Capita
2000	5	274	192	17	0.3
2001	6	290	204	13	0.3
2002	5	278	195	19	0.3
2003	5	268	180	14	0.3
2004	5	247	164	13	0.3
2005	4	254	172	20	0.2
2006	4	248	169	19	0.2
2007	4	222	156	15	0.2
2008	4	244	166	20	0.2
2009	4	222	152	16	0.2
2010	3	197	129	25	0.2
2011	4	230	156	17	0.2
2012	4	232	156	17	0.2
2013	4	234	159	17	0.2
2014	4	232	160	17	0.2
2015	4	237	165	18	0.2
2016	4	245	171	19	0.2
2017	4	246	.	19	0.2
2018	4	252	.	19	0.2
2019	4	256	.	19	0.2
2020	4	255	.	18	0.2



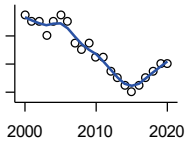
ESTABLISHMENTS: CONSTRUCTION

U.S. Census Bureau, County Business Patterns. Beginning with the 2017 data, any tabulation with fewer than 3 establishments were omitted from the release. Data for these establishments are included in the broader total.

Year	County	State of Kansas	Non Metro Kansas	County Rank	Per 1000 or \$ Per Capita
2000	67	7,703	2,616	23	3.5
2001	59	7,449	2,520	23	3.1
2002	59	7,519	2,482	25	3.1
2003	51	7,722	2,521	27	2.7
2004	52	7,887	2,518	26	2.7
2005	57	8,032	2,515	24	3.0
2006	59	8,031	2,494	24	3.0
2007	56	8,057	2,547	26	2.9
2008	54	7,831	2,522	25	2.7
2009	52	7,342	2,452	24	2.6
2010	57	7,064	2,394	23	2.9
2011	49	6,774	2,361	26	2.5
2012	58	6,741	2,393	23	2.9
2013	57	6,802	2,394	22	2.9
2014	57	6,920	2,383	22	3.0
2015	56	7,014	2,377	24	2.9
2016	54	6,988	2,343	24	2.8
2017	52	7,031	2,316	25	2.8
2018	51	7,124	2,285	23	2.7
2019	52	7,060	2,242	23	2.8
2020	53	7,089	2,249	23	2.9

County: county value. Kansas: state value. County Rank: highest county value ranked #1. (\$000): thousands of dollars. Nonmetro Kansas: Kansas total less Metropolitan Areas as defined by the Office of Management and Budget (OMB; released 3/6/2020). Per 1000: For nonmoney amounts, Per 1000=(county value / county population for the same year as the data) x 1000. \$ Per capita=(county value / county population for the same year as the data). Value= . indicates missing or suppressed data or value not calculated.

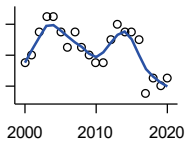
Business



**ESTABLISHMENTS:
MANUFACTURING**

U.S. Census Bureau, County Business Patterns. Beginning with the 2017 data, any tabulation with fewer than 3 establishments were omitted from the release. Data for these establishments are included in the broader total.

Year	County	State of Kansas	Non Metro Kansas	County Rank	Per 1000 or \$ Per Capita
2000	23	3,229	1,316	32	1.2
2001	22	3,240	1,323	34	1.1
2002	22	3,181	1,289	35	1.2
2003	20	3,159	1,291	35	1.0
2004	22	3,179	1,313	34	1.1
2005	23	3,128	1,278	33	1.2
2006	22	3,165	1,290	34	1.1
2007	19	3,184	1,316	37	1.0
2008	18	3,171	1,297	37	0.9
2009	19	3,026	1,240	35	1.0
2010	17	2,955	1,222	37	0.9
2011	17	2,877	1,193	36	0.9
2012	15	2,889	1,197	37	0.8
2013	14	2,836	1,165	38	0.7
2014	13	2,831	1,168	41	0.7
2015	12	2,817	1,161	42	0.6
2016	13	2,791	1,150	39	0.7
2017	14	2,760	1,147	38	0.7
2018	15	2,725	1,126	38	0.8
2019	16	2,695	1,111	37	0.9
2020	16	2,673	1,103	37	0.9



**ESTABLISHMENTS: WHOLESALE
TRADE**

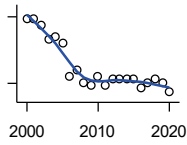
U.S. Census Bureau, County Business Patterns. Beginning with the 2017 data, any tabulation with fewer than 3 establishments were omitted from the release. Data for these establishments are included in the broader total.

Year	County	State of Kansas	Non Metro Kansas	County Rank	Per 1000 or \$ Per Capita
2000	21	4,876	1,776	35	1.1
2001	22	4,811	1,769	37	1.1
2002	25	4,719	1,750	31	1.3
2003	27	4,590	1,637	22	1.4
2004	27	4,553	1,634	23	1.4
2005	25	4,541	1,618	24	1.3
2006	23	4,517	1,596	29	1.2
2007	25	4,555	1,629	26	1.3
2008	23	4,501	1,622	30	1.2
2009	22	4,437	1,614	29	1.1
2010	21	4,432	1,612	31	1.1
2011	21	4,400	1,660	32	1.1
2012	24	4,563	1,755	31	1.2
2013	26	4,501	1,741	27	1.3
2014	25	4,497	1,746	28	1.3
2015	25	4,459	1,755	30	1.3
2016	24	4,457	1,732	31	1.3
2017	17	4,436	1,774	49	0.9
2018	19	4,330	1,727	40	1.0
2019	18	4,291	1,713	44	1.0
2020	19	4,191	1,677	37	1.0

County: county value. Kansas: state value. County Rank: highest county value ranked #1. (\$000): thousands of dollars. Nonmetro Kansas: Kansas total less Metropolitan Areas as defined by the Office of Management and Budget (OMB; released 3/6/2020). Per 1000: For nonmoney amounts, Per 1000=(county value / county population for the same year as the data) x 1000. \$ Per capita=(county value / county population for the same year as the data). Value= . indicates missing or suppressed data or value not calculated.

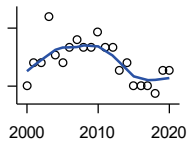
Business

ESTABLISHMENTS: RETAIL TRADE



U.S. Census Bureau, County Business Patterns. Beginning with the 2017 data, any tabulation with fewer than 3 establishments were omitted from the release. Data for these establishments are included in the broader total.

Year	County	State of Kansas	Non Metro Kansas	County Rank	Per 1000 or \$ Per Capita
2000	99	12,261	5,240	24	5.1
2001	99	12,206	5,207	24	5.2
2002	96	11,980	5,082	25	5.0
2003	90	11,834	5,049	27	4.7
2004	91	11,748	4,967	27	4.7
2005	88	11,562	4,834	26	4.6
2006	73	11,367	4,702	31	3.8
2007	76	11,306	4,653	30	3.9
2008	70	10,978	4,494	31	3.5
2009	69	10,760	4,372	30	3.5
2010	73	10,727	4,346	29	3.7
2011	69	10,655	4,289	30	3.5
2012	72	10,585	4,202	29	3.7
2013	72	10,433	4,147	28	3.7
2014	72	10,391	4,070	28	3.7
2015	72	10,327	4,061	29	3.7
2016	68	10,197	3,965	29	3.6
2017	70	10,074	3,885	29	3.7
2018	72	9,866	3,797	28	3.9
2019	70	9,762	3,750	27	3.8
2020	66	9,591	3,666	28	3.6



ESTABLISHMENTS: TRANSPORTATION & WAREHOUSING

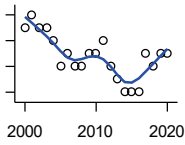
U.S. Census Bureau, County Business Patterns. Beginning with the 2017 data, any tabulation with fewer than 3 establishments were omitted from the release. Data for these establishments are included in the broader total.

Year	County	State of Kansas	Non Metro Kansas	County Rank	Per 1000 or \$ Per Capita
2000	25	2,474	1,293	22	1.3
2001	28	2,463	1,298	21	1.5
2002	28	2,461	1,278	21	1.5
2003	34	2,576	1,297	21	1.8
2004	29	2,651	1,324	22	1.5
2005	28	2,632	1,326	25	1.5
2006	30	2,626	1,295	23	1.5
2007	31	2,664	1,314	21	1.6
2008	30	2,675	1,329	20	1.5
2009	30	2,635	1,313	20	1.5
2010	32	2,615	1,313	20	1.6
2011	30	2,579	1,285	20	1.5
2012	30	2,519	1,243	21	1.5
2013	27	2,492	1,226	22	1.4
2014	28	2,518	1,240	21	1.5
2015	25	2,554	1,257	24	1.3
2016	25	2,567	1,241	24	1.3
2017	25	2,640	1,245	23	1.3
2018	24	2,627	1,238	25	1.3
2019	27	2,615	1,209	23	1.5
2020	27	2,589	1,179	21	1.5

County: county value. Kansas: state value. County Rank: highest county value ranked #1. (\$000): thousands of dollars. Nonmetro Kansas: Kansas total less Metropolitan Areas as defined by the Office of Management and Budget (OMB; released 3/6/2020). Per 1000: For nonmoney amounts, Per 1000=(county value / county population for the same year as the data) x 1000. \$ Per capita=(county value / county population for the same year as the data). Value= . indicates missing or suppressed data or value not calculated.

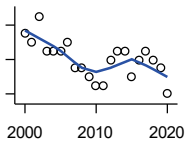
Business

ESTABLISHMENTS: INFORMATION



U.S. Census Bureau, County Business Patterns. Beginning with the 2017 data, any tabulation with fewer than 3 establishments were omitted from the release. Data for these establishments are included in the broader total.

Year	County	State of Kansas	Non Metro Kansas	County Rank	Per 1000 or \$ Per Capita
2000	8	1,542	578	43	0.4
2001	9	1,556	566	35	0.5
2002	8	1,517	551	42	0.4
2003	8	1,516	564	39	0.4
2004	7	1,518	556	41	0.4
2005	5	1,519	536	58	0.3
2006	6	1,549	559	50	0.3
2007	5	1,504	527	52	0.3
2008	5	1,468	522	51	0.3
2009	6	1,420	510	44	0.3
2010	6	1,437	527	48	0.3
2011	7	1,428	537	43	0.4
2012	5	1,387	515	55	0.3
2013	4	1,337	487	61	0.2
2014	3	1,335	496	69	0.2
2015	3	1,359	510	69	0.2
2016	3	1,431	537	70	0.2
2017	6	1,439	.	49	0.3
2018	5	1,407	.	54	0.3
2019	6	1,422	.	49	0.3
2020	6	1,424	.	49	0.3



ESTABLISHMENTS: FINANCE & INSURANCE

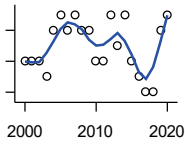
U.S. Census Bureau, County Business Patterns. Beginning with the 2017 data, any tabulation with fewer than 3 establishments were omitted from the release. Data for these establishments are included in the broader total.

Year	County	State of Kansas	Non Metro Kansas	County Rank	Per 1000 or \$ Per Capita
2000	35	5,209	1,848	25	1.8
2001	34	5,178	1,828	27	1.8
2002	37	5,496	1,911	24	1.9
2003	33	5,569	1,907	28	1.7
2004	33	5,572	1,913	28	1.7
2005	33	5,708	1,964	27	1.7
2006	34	5,877	1,976	26	1.7
2007	31	6,017	2,030	28	1.6
2008	31	6,010	2,023	28	1.6
2009	30	5,933	1,994	28	1.5
2010	29	5,872	1,975	29	1.5
2011	29	5,854	1,985	30	1.5
2012	32	5,993	2,024	28	1.6
2013	33	5,903	1,993	27	1.7
2014	33	5,894	2,000	27	1.7
2015	30	5,932	1,998	30	1.6
2016	32	6,022	2,021	29	1.7
2017	33	6,026	2,007	28	1.8
2018	32	6,023	1,997	28	1.7
2019	31	5,953	1,977	29	1.7
2020	28	5,926	1,969	30	1.5

County: county value. Kansas: state value. County Rank: highest county value ranked #1. (\$000): thousands of dollars. Nonmetro Kansas: Kansas total less Metropolitan Areas as defined by the Office of Management and Budget (OMB; released 3/6/2020). Per 1000: For nonmoney amounts, Per 1000=(county value / county population for the same year as the data) x 1000. \$ Per capita=(county value / county population for the same year as the data). Value= . indicates missing or suppressed data or value not calculated.

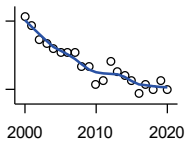
Business

ESTABLISHMENTS: REAL ESTATE, RENTAL, AND LEASING



U.S. Census Bureau, County Business Patterns. Beginning with the 2017 data, any tabulation with fewer than 3 establishments were omitted from the release. Data for these establishments are included in the broader total.

Year	County	State of Kansas	Non Metro Kansas	County Rank	Per 1000 or \$ Per Capita
2000	11	2,733	687	30	0.6
2001	11	2,849	724	31	0.6
2002	11	2,952	735	32	0.6
2003	10	3,007	727	34	0.5
2004	13	3,108	713	29	0.7
2005	14	3,203	727	30	0.7
2006	13	3,268	736	31	0.7
2007	14	3,286	721	28	0.7
2008	13	3,239	738	31	0.7
2009	13	3,122	723	31	0.7
2010	11	3,050	708	32	0.6
2011	11	3,002	692	32	0.6
2012	14	2,981	691	27	0.7
2013	12	3,046	717	31	0.6
2014	14	3,135	738	28	0.7
2015	11	3,179	744	30	0.6
2016	10	3,293	757	31	0.5
2017	9	3,389	.	33	0.5
2018	9	3,409	.	35	0.5
2019	13	3,464	.	30	0.7
2020	14	3,500	.	28	0.8



ESTABLISHMENTS: PROFESSIONAL, SCIENTIFIC, AND TECHNICAL SERVICES

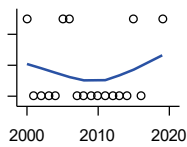
U.S. Census Bureau, County Business Patterns. Beginning with the 2017 data, any tabulation with fewer than 3 establishments were omitted from the release. Data for these establishments are included in the broader total.

Year	County	State of Kansas	Non Metro Kansas	County Rank	Per 1000 or \$ Per Capita
2000	41	6,424	1,690	21	2.1
2001	39	6,492	1,665	25	2.0
2002	36	6,719	1,704	25	1.9
2003	35	6,793	1,735	25	1.8
2004	34	7,025	1,730	26	1.8
2005	33	7,087	1,711	27	1.7
2006	33	7,231	1,736	28	1.7
2007	33	7,329	1,729	25	1.7
2008	30	7,133	1,671	27	1.5
2009	30	7,122	1,676	25	1.5
2010	26	7,172	1,680	34	1.3
2011	27	7,115	1,668	30	1.4
2012	31	7,122	1,681	27	1.6
2013	29	7,129	1,698	29	1.5
2014	28	7,206	1,682	29	1.5
2015	27	7,184	1,687	30	1.4
2016	24	7,146	1,659	33	1.3
2017	26	7,224	1,679	32	1.4
2018	25	7,138	1,655	33	1.3
2019	27	7,119	.	32	1.5
2020	25	7,117	.	33	1.4

County: county value. Kansas: state value. County Rank: highest county value ranked #1. (\$000): thousands of dollars. Nonmetro Kansas: Kansas total less Metropolitan Areas as defined by the Office of Management and Budget (OMB; released 3/6/2020). Per 1000: For nonmoney amounts, Per 1000=(county value / county population for the same year as the data) x 1000. \$ Per capita=(county value / county population for the same year as the data). Value= . indicates missing or suppressed data or value not calculated.

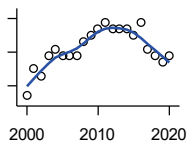
Business

ESTABLISHMENTS: MANAGEMENT OF COMPANIES AND ENTERPRISES



U.S. Census Bureau, County Business Patterns. Beginning with the 2017 data, any tabulation with fewer than 3 establishments were omitted from the release. Data for these establishments are included in the broader total.

Year	County	State of Kansas	Non Metro Kansas	County Rank	Per 1000 or \$ Per Capita
2000	3	622	145	28	0.2
2001	2	593	141	38	0.1
2002	2	597	152	41	0.1
2003	2	561	135	34	0.1
2004	2	569	133	35	0.1
2005	3	543	127	22	0.2
2006	3	542	131	26	0.2
2007	2	550	133	39	0.1
2008	2	553	139	42	0.1
2009	2	575	136	41	0.1
2010	2	567	131	40	0.1
2011	2	552	134	39	0.1
2012	2	593	135	38	0.1
2013	2	590	135	37	0.1
2014	2	603	136	38	0.1
2015	3	613	140	29	0.2
2016	2	655	171	39	0.1
2019	3	650	.	28	0.2



ESTABLISHMENTS: ADMIN, SUPPORT, WASTE MGMT., AND REMEDIATION

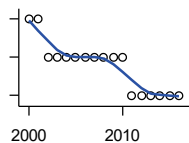
U.S. Census Bureau, County Business Patterns. Beginning with the 2017 data, any tabulation with fewer than 3 establishments were omitted from the release. Data for these establishments are included in the broader total.

Year	County	State of Kansas	Non Metro Kansas	County Rank	Per 1000 or \$ Per Capita
2000	11	3,307	871	35	0.6
2001	15	3,421	913	28	0.8
2002	14	3,232	882	29	0.7
2003	17	3,189	858	26	0.9
2004	18	3,301	891	27	0.9
2005	17	3,342	896	27	0.9
2006	17	3,395	886	28	0.9
2007	17	3,522	921	28	0.9
2008	19	3,587	932	27	1.0
2009	20	3,505	904	25	1.0
2010	21	3,494	897	23	1.1
2011	22	3,447	903	24	1.1
2012	21	3,462	891	23	1.1
2013	21	3,489	904	25	1.1
2014	21	3,569	933	25	1.1
2015	20	3,630	964	24	1.0
2016	22	3,705	987	22	1.2
2017	18	3,741	991	26	1.0
2018	17	3,740	983	26	0.9
2019	16	3,762	991	27	0.9
2020	17	3,807	989	27	0.9

County: county value. Kansas: state value. County Rank: highest county value ranked #1. (\$000): thousands of dollars. Nonmetro Kansas: Kansas total less Metropolitan Areas as defined by the Office of Management and Budget (OMB; released 3/6/2020). Per 1000: For nonmoney amounts, Per 1000=(county value / county population for the same year as the data) x 1000. \$ Per capita=(county value / county population for the same year as the data). Value= . indicates missing or suppressed data or value not calculated.

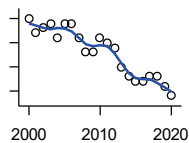
Business

ESTABLISHMENTS: EDUCATIONAL SERVICES



U.S. Census Bureau, County Business Patterns. Beginning with the 2017 data, any tabulation with fewer than 3 establishments were omitted from the release. Data for these establishments are included in the broader total.

Year	County	State of Kansas	Non Metro Kansas	County Rank	Per 1000 or \$ Per Capita
2000	2	604	155	45	0.1
2001	2	625	168	49	0.1
2002	1	666	165	70	0.1
2003	1	663	173	73	0.1
2004	1	690	173	72	0.1
2005	1	699	168	69	0.1
2006	1	698	175	68	0.1
2007	1	691	165	68	0.1
2008	1	692	158	67	0.1
2009	1	690	150	66	0.1
2010	1	700	149	68	0.1
2011	0	711	150	105	0.0
2012	0	724	145	105	0.0
2013	0	735	153	105	0.0
2014	0	722	152	105	0.0
2015	0	754	152	105	0.0
2016	0	728	150	105	0.0



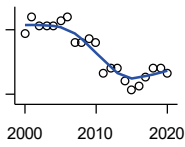
ESTABLISHMENTS: HEALTH CARE AND SOCIAL ASSISTANCE

U.S. Census Bureau, County Business Patterns. Beginning with the 2017 data, any tabulation with fewer than 3 establishments were omitted from the release. Data for these establishments are included in the broader total.

Year	County	State of Kansas	Non Metro Kansas	County Rank	Per 1000 or \$ Per Capita
2000	50	6,564	2,591	28	2.6
2001	47	6,636	2,590	30	2.5
2002	48	7,052	2,777	29	2.5
2003	49	7,129	2,792	30	2.5
2004	46	7,239	2,813	30	2.4
2005	49	7,412	2,855	28	2.5
2006	49	7,477	2,860	28	2.5
2007	46	7,661	2,864	30	2.4
2008	43	7,651	2,810	30	2.2
2009	43	7,696	2,787	31	2.2
2010	46	7,751	2,830	30	2.3
2011	45	7,804	2,817	30	2.3
2012	44	7,973	2,793	30	2.2
2013	40	7,877	2,729	34	2.1
2014	38	7,809	2,686	34	2.0
2015	37	8,103	2,692	34	1.9
2016	37	8,315	2,678	34	2.0
2017	38	8,136	2,646	33	2.0
2018	38	8,126	2,632	33	2.0
2019	36	8,184	2,587	34	1.9
2020	34	8,290	2,571	36	1.8

County: county value. Kansas: state value. County Rank: highest county value ranked #1. (\$000): thousands of dollars. Nonmetro Kansas: Kansas total less Metropolitan Areas as defined by the Office of Management and Budget (OMB; released 3/6/2020). Per 1000: For nonmoney amounts, Per 1000=(county value / county population for the same year as the data) x 1000. \$ Per capita=(county value / county population for the same year as the data). Value= . indicates missing or suppressed data or value not calculated.

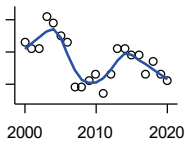
Business



ESTABLISHMENTS: ARTS, ENTERTAINMENT, AND RECREATION

U.S. Census Bureau, County Business Patterns. Beginning with the 2017 data, any tabulation with fewer than 3 establishments were omitted from the release. Data for these establishments are included in the broader total.

Year	County	State of Kansas	Non Metro Kansas	County Rank	Per 1000 or \$ Per Capita
2000	24	981	419	8	1.2
2001	28	1,009	433	7	1.5
2002	26	1,054	441	8	1.4
2003	26	1,045	443	7	1.4
2004	26	1,082	445	7	1.4
2005	27	1,109	446	7	1.4
2006	28	1,080	445	6	1.4
2007	22	1,092	444	8	1.1
2008	22	1,062	423	7	1.1
2009	23	1,063	421	7	1.2
2010	22	1,018	406	8	1.1
2011	15	997	387	12	0.8
2012	16	1,000	388	10	0.8
2013	16	1,009	377	8	0.8
2014	13	1,030	365	13	0.7
2015	11	1,031	357	16	0.6
2016	12	1,060	366	16	0.6
2017	14	1,096	.	12	0.7
2018	16	1,088	.	11	0.9
2019	16	1,087	.	10	0.9
2020	15	1,064	.	10	0.8



ESTABLISHMENTS: ACCOMMODATION AND FOOD SERVICES

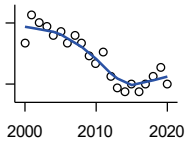
U.S. Census Bureau, County Business Patterns. Beginning with the 2017 data, any tabulation with fewer than 3 establishments were omitted from the release. Data for these establishments are included in the broader total.

Year	County	State of Kansas	Non Metro Kansas	County Rank	Per 1000 or \$ Per Capita
2000	44	5,536	2,213	24	2.3
2001	43	5,551	2,173	26	2.2
2002	43	5,610	2,174	24	2.2
2003	48	5,635	2,188	24	2.5
2004	47	5,681	2,160	25	2.4
2005	45	5,776	2,170	26	2.3
2006	44	5,745	2,132	26	2.3
2007	37	5,877	2,095	27	1.9
2008	37	5,843	2,052	27	1.9
2009	38	5,794	2,029	25	1.9
2010	39	5,898	2,046	26	2.0
2011	36	5,958	2,067	27	1.8
2012	39	5,951	2,046	26	2.0
2013	43	6,061	2,070	25	2.2
2014	43	5,985	2,024	25	2.2
2015	42	6,034	2,063	26	2.2
2016	42	6,126	2,094	25	2.2
2017	39	6,250	2,123	28	2.1
2018	41	6,256	2,128	25	2.2
2019	39	6,231	2,131	26	2.1
2020	38	6,206	2,131	27	2.1

County: county value. Kansas: state value. County Rank: highest county value ranked #1. (\$000): thousands of dollars. Nonmetro Kansas: Kansas total less Metropolitan Areas as defined by the Office of Management and Budget (OMB; released 3/6/2020). Per 1000: For nonmoney amounts, Per 1000=(county value / county population for the same year as the data) x 1000. \$ Per capita=(county value / county population for the same year as the data). Value= . indicates missing or suppressed data or value not calculated.

Business

ESTABLISHMENTS: OTHER SERVICES

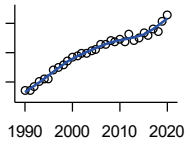


U.S. Census Bureau, County Business Patterns. Beginning with the 2017 data, any tabulation with fewer than 3 establishments were omitted from the release. Data for these establishments are included in the broader total.

Year	County	State of Kansas	Non Metro Kansas	County Rank	Per 1000 or \$ Per Capita
2000	80	8,423	3,636	23	4.1
2001	87	8,310	3,614	21	4.5
2002	85	8,552	3,658	21	4.4
2003	84	8,411	3,605	21	4.4
2004	82	8,343	3,597	21	4.3
2005	83	8,321	3,571	21	4.3
2006	80	8,225	3,490	21	4.1
2007	82	8,355	3,534	21	4.2
2008	80	8,104	3,406	21	4.0
2009	77	8,040	3,405	22	3.9
2010	75	7,998	3,379	22	3.8
2011	78	7,883	3,294	22	4.0
2012	72	7,913	3,303	24	3.7
2013	69	7,947	3,290	26	3.6
2014	68	7,943	3,285	26	3.5
2015	70	7,869	3,255	23	3.6
2016	68	7,839	3,204	26	3.6
2017	70	7,873	3,189	25	3.7
2018	72	7,853	3,176	24	3.9
2019	74	7,834	3,138	23	4.0
2020	70	7,787	3,073	24	3.8

County: county value. Kansas: state value. County Rank: highest county value ranked #1. (\$000): thousands of dollars. Nonmetro Kansas: Kansas total less Metropolitan Areas as defined by the Office of Management and Budget (OMB; released 3/6/2020). Per 1000: For nonmoney amounts, Per 1000=(county value / county population for the same year as the data) x 1000. \$ Per capita=(county value / county population for the same year as the data). Value= . indicates missing or suppressed data or value not calculated.

Business



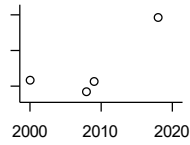
**TOTAL ANNUAL PAYROLL (\$000)
COUNTY BUSINESS PATTERNS**

U.S. Census Bureau, County Business Patterns. Beginning with the 2017 data, any tabulation with fewer than 3 establishments were omitted from the release. Data for these establishments are included in the broader total.

Year	County	State of Kansas	Non Metro Kansas	County Rank	Per 1000 or \$ Per Capita
1990	59,758	17,487,316	4,442,429	32	3,152.1
1991	61,493	18,162,326	4,612,616	32	3,266.6
1992	67,786	19,244,346	4,882,060	32	3,528.3
1993	74,820	20,087,190	5,182,780	31	3,875.7
1994	80,671	21,201,652	5,541,423	33	4,140.2
1995	80,913	22,825,920	5,875,310	34	4,135.6
1996	95,976	24,613,884	6,198,398	31	4,886.5
1997	99,612	26,787,098	6,599,061	32	5,099.9
1998	104,844	28,747,576	6,871,794	32	5,428.4
1999	110,828	30,600,434	7,121,961	32	5,735.5
2000	117,414	31,990,762	7,520,424	31	6,069.8
2001	119,574	33,303,992	7,598,165	31	6,248.0
2002	124,137	33,152,962	7,572,002	29	6,492.2
2003	124,745	34,040,944	7,726,561	29	6,484.3
2004	128,980	35,725,812	8,303,779	30	6,721.6
2005	130,825	36,646,064	8,586,986	30	6,783.8
2006	139,310	39,251,388	9,178,947	31	7,170.2
2007	139,650	42,022,753	.	31	7,178.5
2008	146,102	43,984,689	.	32	7,355.9
2009	143,754	42,146,866	.	30	7,286.1
2010	146,905	42,686,303	10,294,015	31	7,436.7
2011	144,417	43,733,944	.	31	7,336.4
2012	156,348	45,608,072	11,222,183	30	7,934.4
2013	146,375	47,715,601	11,446,751	32	7,532.3
2014	150,486	49,712,832	11,957,931	32	7,795.2
2015	158,085	51,259,676	11,975,718	33	8,231.0
2016	154,475	51,016,318	12,148,646	32	8,149.1
2017	165,755	52,754,605	12,448,592	32	8,803.2
2018	160,747	55,087,460	12,810,270	34	8,604.4
2019	179,166	57,272,387	13,123,288	31	9,702.5
2020	189,528	58,374,388	14,007,955	29	10,299.3

County: county value. Kansas: state value. County Rank: highest county value ranked #1. (\$000): thousands of dollars. Nonmetro Kansas: Kansas total less Metropolitan Areas as defined by the Office of Management and Budget (OMB; released 3/6/2020). Per 1000: For nonmoney amounts, Per 1000=(county value / county population for the same year as the data) x 1000. \$ Per capita=(county value / county population for the same year as the data). Value= . indicates missing or suppressed data or value not calculated.

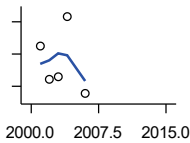
Business



**TOTAL ANNUAL PAYROLL(\$000):
FORESTRY, FISHING, HUNTING, AND
AG SUPPORT**

U.S. Census Bureau, County Business Patterns. Beginning with the 2017 data, any tabulation with fewer than 3 establishments were omitted from the release. Data for these establishments are included in the broader total.

Year	County	State of Kansas	Non Metro Kansas	County Rank	Per 1000 or \$ Per Capita
2000	716	13,551	.	.	37.0
2001
2002	.	16,528	.	.	.
2003	.	17,247	.	.	.
2004	.	17,552	.	.	.
2005	.	16,298	.	.	.
2006	.	17,908	.	.	.
2007	.	22,199	.	.	.
2008	683	21,359	.	.	34.4
2009	713	22,466	.	.	36.1
2010	.	22,753	.	.	.
2011	.	23,320	.	.	.
2012	.	27,492	.	.	.
2013	.	30,360	.	.	.
2014	.	34,862	.	.	.
2015	.	35,980	.	.	.
2018	892	37,960	.	.	47.7



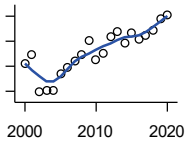
**TOTAL ANNUAL PAYROLL(\$000):
MINING**

U.S. Census Bureau, County Business Patterns. Beginning with the 2017 data, any tabulation with fewer than 3 establishments were omitted from the release. Data for these establishments are included in the broader total.

Year	County	State of Kansas	Non Metro Kansas	County Rank	Per 1000 or \$ Per Capita
2000	.	240,079	.	.	.
2001	1,381	273,838	.	.	72.2
2002	851	262,277	.	.	44.5
2003	900	290,652	.	.	46.8
2004	1,832	326,997	.	.	95.5
2005	.	381,069	.	.	.
2006	632	482,102	.	.	32.5
2007	.	551,751	.	.	.
2008	.	620,446	.	.	.
2009	.	465,070	.	.	.
2010	.	485,841	.	.	.
2011	.	541,536	.	.	.
2012	.	600,402	.	.	.
2013	.	599,788	.	.	.
2014	.	678,673	.	.	.
2015	.	552,658	.	.	.

County: county value. Kansas: state value. County Rank: highest county value ranked #1. (\$000): thousands of dollars. Nonmetro Kansas: Kansas total less Metropolitan Areas as defined by the Office of Management and Budget (OMB; released 3/6/2020). Per 1000: For nonmoney amounts, Per 1000=(county value / county population for the same year as the data) x 1000. \$ Per capita=(county value / county population for the same year as the data). Value= . indicates missing or suppressed data or value not calculated.

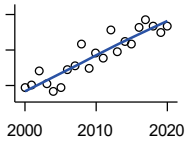
Business



**TOTAL ANNUAL PAYROLL(\$000):
UTILITIES**

U.S. Census Bureau, County Business Patterns. Beginning with the 2017 data, any tabulation with fewer than 3 establishments were omitted from the release. Data for these establishments are included in the broader total.

Year	County	State of Kansas	Non Metro Kansas	County Rank	Per 1000 or \$ Per Capita
2000	4,122	410,313	.	.	213.1
2001	4,445	452,057	.	.	232.3
2002	2,962	377,559	.	.	154.9
2003	3,009	378,157	.	.	156.4
2004	3,030	377,809	.	.	157.9
2005	3,701	429,864	.	.	191.9
2006	3,949	443,999	.	.	203.3
2007	4,188	480,068	.	.	215.3
2008	4,466	541,066	.	.	224.9
2009	5,005	563,373	.	.	253.7
2010	4,239	512,628	.	.	214.6
2011	4,495	653,229	.	.	228.3
2012	5,190	625,451	.	.	263.4
2013	5,367	625,347	.	.	276.2
2014	4,941	610,960	.	.	255.9
2015	5,325	668,559	.	.	277.3
2016	5,098	700,926	.	.	268.9
2017	5,215	705,199	.	.	277.0
2018	5,416	770,542	.	.	289.9
2019	5,907	733,878	.	.	319.9
2020	6,054	738,521	.	.	329.0



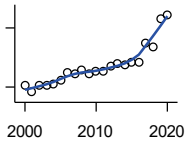
**TOTAL ANNUAL PAYROLL(\$000):
CONSTRUCTION**

U.S. Census Bureau, County Business Patterns. Beginning with the 2017 data, any tabulation with fewer than 3 establishments were omitted from the release. Data for these establishments are included in the broader total.

Year	County	State of Kansas	Non Metro Kansas	County Rank	Per 1000 or \$ Per Capita
2000	4,893	2,256,057	.	.	252.9
2001	5,017	2,320,652	.	.	262.1
2002	5,792	2,302,229	.	.	302.9
2003	5,085	2,282,021	.	.	264.3
2004	4,640	2,302,854	.	.	241.8
2005	4,864	2,465,977	.	.	252.2
2006	5,879	2,700,351	.	.	302.6
2007	6,135	2,772,168	.	.	315.4
2008	7,316	2,950,073	.	.	368.3
2009	5,964	2,709,864	.	.	302.3
2010	6,802	2,553,555	.	.	344.3
2011	6,563	2,550,355	.	.	333.4
2012	8,146	2,733,284	.	.	413.4
2013	6,917	2,866,801	.	.	355.9
2014	7,499	3,135,814	.	.	388.4
2015	7,316	3,270,952	.	.	380.9
2016	8,270	3,328,610	.	.	436.3
2017	8,716	3,568,505	.	.	462.9
2018	8,333	3,806,196	.	.	446.0
2019	7,996	3,879,912	.	.	433.0
2020	8,323	3,983,029	.	.	452.3

County: county value. Kansas: state value. County Rank: highest county value ranked #1. (\$000): thousands of dollars. Nonmetro Kansas: Kansas total less Metropolitan Areas as defined by the Office of Management and Budget (OMB; released 3/6/2020). Per 1000: For nonmoney amounts, Per 1000=(county value / county population for the same year as the data) x 1000. \$ Per capita=(county value / county population for the same year as the data). Value= . indicates missing or suppressed data or value not calculated.

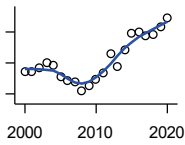
Business



**TOTAL ANNUAL PAYROLL(\$000):
MANUFACTURING**

U.S. Census Bureau, County Business Patterns. Beginning with the 2017 data, any tabulation with fewer than 3 establishments were omitted from the release. Data for these establishments are included in the broader total.

Year	County	State of Kansas	Non Metro Kansas	County Rank	Per 1000 or \$ Per Capita
2000	30,661	7,015,414	.	.	1,585.0
2001	27,380	7,301,706	.	.	1,430.7
2002	30,678	6,802,605	.	.	1,604.4
2003	30,740	6,691,611	.	.	1,597.9
2004	31,440	6,985,656	.	.	1,638.4
2005	33,683	7,221,614	.	.	1,746.6
2006	37,491	7,621,873	.	.	1,929.6
2007	36,867	7,873,359	.	.	1,895.1
2008	38,510	8,441,541	.	.	1,938.9
2009	36,711	7,477,838	.	.	1,860.7
2010	38,209	7,556,955	.	.	1,934.2
2011	37,890	7,747,934	.	.	1,924.8
2012	40,369	7,704,851	.	.	2,048.7
2013	41,624	8,365,542	.	.	2,141.9
2014	41,053	8,787,306	.	.	2,126.5
2015	42,661	9,052,105	.	.	2,221.2
2016	42,827	8,868,744	.	.	2,259.3
2017	52,287	9,075,793	.	.	2,776.9
2018	50,593	9,481,652	.	.	2,708.1
2019	64,463	10,171,575	.	.	3,490.9
2020	66,638	9,744,825	.	.	3,621.2



**TOTAL ANNUAL PAYROLL(\$000):
WHOLESALE TRADE**

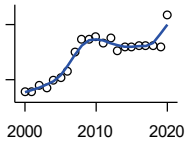
U.S. Census Bureau, County Business Patterns. Beginning with the 2017 data, any tabulation with fewer than 3 establishments were omitted from the release. Data for these establishments are included in the broader total.

Year	County	State of Kansas	Non Metro Kansas	County Rank	Per 1000 or \$ Per Capita
2000	10,911	2,332,755	.	.	564.1
2001	10,889	2,283,169	.	.	569.0
2002	11,335	2,107,653	.	.	592.8
2003	11,997	2,622,701	.	.	623.6
2004	11,710	2,663,196	.	.	610.2
2005	10,253	2,345,990	.	.	531.7
2006	9,759	2,592,211	.	.	502.3
2007	9,501	2,682,542	.	.	488.4
2008	8,443	3,078,655	.	.	425.1
2009	8,973	2,940,949	.	.	454.8
2010	9,852	3,097,628	.	.	498.7
2011	10,660	3,305,811	.	.	541.5
2012	13,145	3,339,997	.	.	667.1
2013	11,506	3,460,512	.	.	592.1
2014	13,749	3,712,075	.	.	712.2
2015	15,846	3,760,189	.	.	825.1
2016	16,076	3,738,207	.	.	848.1
2017	15,567	3,822,730	.	.	826.8
2018	15,724	3,814,353	.	.	841.7
2019	16,652	4,025,802	.	.	901.8
2020	17,825	4,224,666	.	.	968.6

County: county value. Kansas: state value. County Rank: highest county value ranked #1. (\$000): thousands of dollars. Nonmetro Kansas: Kansas total less Metropolitan Areas as defined by the Office of Management and Budget (OMB; released 3/6/2020). Per 1000: For nonmoney amounts, Per 1000=(county value / county population for the same year as the data) x 1000. \$ Per capita=(county value / county population for the same year as the data). Value= . indicates missing or suppressed data or value not calculated.

Business

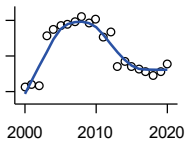
**TOTAL ANNUAL PAYROLL(\$000):
RETAIL TRADE**



U.S. Census Bureau, County Business Patterns. Beginning with the 2017 data, any tabulation with fewer than 3 establishments were omitted from the release. Data for these establishments are included in the broader total.

Year	County	State of Kansas	Non Metro Kansas	County Rank	Per 1000 or \$ Per Capita
2000	12,711	2,747,001	.	.	657.1
2001	12,660	2,813,226	.	.	661.5
2002	13,435	2,854,231	.	.	702.6
2003	13,111	2,773,674	.	.	681.5
2004	13,900	2,847,826	.	.	724.4
2005	14,164	2,952,196	.	.	734.5
2006	14,944	3,126,495	.	.	769.2
2007	17,007	3,201,169	.	.	874.2
2008	18,420	3,261,054	.	.	927.4
2009	18,373	3,232,246	.	.	931.2
2010	18,687	3,321,838	.	.	946.0
2011	18,011	3,384,607	.	.	915.0
2012	18,515	3,409,755	.	.	939.6
2013	17,206	3,483,752	.	.	885.4
2014	17,569	3,617,933	.	.	910.1
2015	17,583	3,712,165	.	.	915.5
2016	17,695	3,826,889	.	.	933.5
2017	17,704	3,797,849	.	.	940.3
2018	17,681	3,818,988	.	.	946.4
2019	17,575	3,908,994	.	.	951.7
2020	21,060	3,984,443	.	.	1,144.4

**TOTAL ANNUAL PAYROLL(\$000):
TRANSPORTATION &
WAREHOUSING**



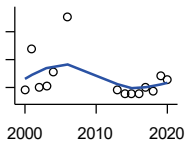
U.S. Census Bureau, County Business Patterns. Beginning with the 2017 data, any tabulation with fewer than 3 establishments were omitted from the release. Data for these establishments are included in the broader total.

Year	County	State of Kansas	Non Metro Kansas	County Rank	Per 1000 or \$ Per Capita
2000	4,524	1,044,835	.	.	233.9
2001	4,791	1,089,405	.	.	250.3
2002	4,703	1,094,636	.	.	246.0
2003	10,261	1,316,655	.	.	533.4
2004	10,991	1,439,800	.	.	572.8
2005	11,424	1,393,651	.	.	592.4
2006	11,587	1,528,551	.	.	596.4
2007	11,792	1,788,267	.	.	606.1
2008	12,433	1,722,697	.	.	626.0
2009	11,757	1,618,598	.	.	595.9
2010	12,091	1,735,761	.	.	612.1
2011	10,139	1,739,165	.	.	515.1
2012	10,753	1,984,976	.	.	545.7
2013	6,743	2,006,261	.	.	347.0
2014	7,360	2,097,377	.	.	381.2
2015	6,838	2,190,072	.	.	356.0
2016	6,586	2,202,859	.	.	347.4
2017	6,191	2,546,061	.	.	328.8
2018	5,853	2,663,188	.	.	313.3
2019	6,186	2,879,406	.	.	335.0
2020	7,151	2,962,461	.	.	388.6

County: county value. Kansas: state value. County Rank: highest county value ranked #1. (\$000): thousands of dollars. Nonmetro Kansas: Kansas total less Metropolitan Areas as defined by the Office of Management and Budget (OMB; released 3/6/2020). Per 1000: For nonmoney amounts, Per 1000=(county value / county population for the same year as the data) x 1000. \$ Per capita=(county value / county population for the same year as the data). Value= . indicates missing or suppressed data or value not calculated.

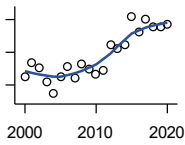
Business

**TOTAL ANNUAL PAYROLL(\$000):
INFORMATION**



U.S. Census Bureau, County Business Patterns. Beginning with the 2017 data, any tabulation with fewer than 3 establishments were omitted from the release. Data for these establishments are included in the broader total.

Year	County	State of Kansas	Non Metro Kansas	County Rank	Per 1000 or \$ Per Capita
2000	929	1,923,381	.	.	48.0
2001	2,377	2,218,610	.	.	124.2
2002	1,020	2,298,108	.	.	53.3
2003	1,030	2,378,673	.	.	53.5
2004	1,558	2,392,990	.	.	81.2
2005	.	2,395,081	.	.	.
2006	3,534	2,586,483	.	.	181.9
2007	.	2,594,138	.	.	.
2008	.	3,043,244	.	.	.
2009	.	3,045,570	.	.	.
2010	.	2,481,580	.	.	.
2011	.	2,513,805	.	.	.
2012	.	2,535,555	.	.	.
2013	897	2,805,017	.	.	46.2
2014	759	2,393,609	.	.	39.3
2015	765	2,406,323	.	.	39.8
2016	771	2,080,211	.	.	40.7
2017	1,005	2,090,021	.	.	53.4
2018	885	2,341,543	.	.	47.4
2019	1,413	2,133,891	.	.	76.5
2020	1,284	2,245,204	.	.	69.8



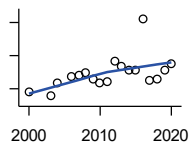
**TOTAL ANNUAL PAYROLL(\$000):
FINANCE & INSURANCE**

U.S. Census Bureau, County Business Patterns. Beginning with the 2017 data, any tabulation with fewer than 3 establishments were omitted from the release. Data for these establishments are included in the broader total.

Year	County	State of Kansas	Non Metro Kansas	County Rank	Per 1000 or \$ Per Capita
2000	5,484	2,083,565	.	.	283.5
2001	6,379	2,129,587	.	.	333.3
2002	6,064	2,414,120	.	.	317.1
2003	5,172	2,608,579	.	.	268.8
2004	4,455	2,676,910	.	.	232.2
2005	5,487	2,786,136	.	.	284.5
2006	6,101	2,928,931	.	.	314.0
2007	5,426	3,096,017	.	.	278.9
2008	6,254	3,322,977	.	.	314.9
2009	5,988	3,206,839	.	.	303.5
2010	5,692	3,211,300	.	.	288.1
2011	5,929	3,404,633	.	.	301.2
2012	7,430	3,611,165	.	.	377.1
2013	7,197	3,896,051	.	.	370.3
2014	7,483	4,044,315	.	.	387.6
2015	9,186	4,113,060	.	.	478.3
2016	8,202	4,180,740	.	.	432.7
2017	9,014	4,258,057	.	.	478.7
2018	8,559	4,682,552	.	.	458.1
2019	8,518	4,814,201	.	.	461.3
2020	8,747	5,288,529	.	.	475.3

County: county value. Kansas: state value. County Rank: highest county value ranked #1. (\$000): thousands of dollars. Nonmetro Kansas: Kansas total less Metropolitan Areas as defined by the Office of Management and Budget (OMB; released 3/6/2020). Per 1000: For nonmoney amounts, Per 1000=(county value / county population for the same year as the data) x 1000. \$ Per capita=(county value / county population for the same year as the data). Value= . indicates missing or suppressed data or value not calculated.

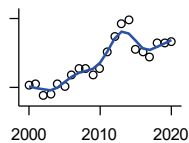
Business



**TOTAL ANNUAL PAYROLL(\$000):
REAL ESTATE, RENTAL, AND
LEASING**

U.S. Census Bureau, County Business Patterns. Beginning with the 2017 data, any tabulation with fewer than 3 establishments were omitted from the release. Data for these establishments are included in the broader total.

Year	County	State of Kansas	Non Metro Kansas	County Rank	Per 1000 or \$ Per Capita
2000	183	360,637	.	.	9.5
2001	.	397,371	.	.	.
2002	.	403,695	.	.	.
2003	155	437,786	.	.	8.1
2004	236	430,719	.	.	12.3
2005	.	465,149	.	.	.
2006	270	478,811	.	.	13.9
2007	279	452,969	.	.	14.3
2008	295	484,149	.	.	14.9
2009	257	450,884	.	.	13.0
2010	233	487,255	.	.	11.8
2011	242	535,120	.	.	12.3
2012	368	531,039	.	.	18.7
2013	333	538,796	.	.	17.1
2014	315	542,307	.	.	16.3
2015	311	595,030	.	.	16.2
2016	622	607,668	.	.	32.8
2017	251	590,373	.	.	13.3
2018	260	600,037	.	.	13.9
2019	315	622,881	.	.	17.1
2020	348	670,656	.	.	18.9



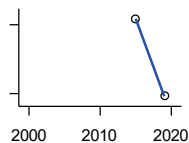
**TOTAL ANNUAL PAYROLL(\$000):
PROFESSIONAL, SCIENTIFIC, AND
TECHNICAL SERVICES**

U.S. Census Bureau, County Business Patterns. Beginning with the 2017 data, any tabulation with fewer than 3 establishments were omitted from the release. Data for these establishments are included in the broader total.

Year	County	State of Kansas	Non Metro Kansas	County Rank	Per 1000 or \$ Per Capita
2000	3,040	2,057,313	.	.	157.2
2001	3,065	2,152,937	.	.	160.2
2002	2,815	2,150,085	.	.	147.2
2003	2,853	2,052,712	.	.	148.3
2004	3,073	2,531,457	.	.	160.1
2005	3,009	2,418,500	.	.	156.0
2006	3,268	2,655,690	.	.	168.2
2007	3,411	2,901,544	.	.	175.3
2008	3,399	2,903,802	.	.	171.1
2009	3,276	3,071,611	.	.	166.0
2010	3,411	3,037,182	.	.	172.7
2011	3,786	3,132,082	.	.	192.3
2012	4,095	3,455,548	.	.	207.8
2013	4,380	3,777,729	.	.	225.4
2014	4,461	3,981,580	.	.	231.1
2015	3,837	4,039,074	.	.	199.8
2016	3,764	4,125,507	.	.	198.6
2017	3,661	4,158,858	.	.	194.4
2018	3,977	4,314,317	.	.	212.9
2019	3,971	4,646,644	.	.	215.0
2020	4,003	4,927,611	.	.	217.5

County: county value. Kansas: state value. County Rank: highest county value ranked #1. (\$000): thousands of dollars. Nonmetro Kansas: Kansas total less Metropolitan Areas as defined by the Office of Management and Budget (OMB; released 3/6/2020). Per 1000: For nonmoney amounts, Per 1000=(county value / county population for the same year as the data) x 1000. \$ Per capita=(county value / county population for the same year as the data). Value= . indicates missing or suppressed data or value not calculated.

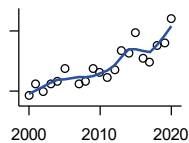
Business



**TOTAL ANNUAL PAYROLL(\$000):
MANAGEMENT OF COMPANIES AND
ENTERPRISES**

U.S. Census Bureau, County Business Patterns. Beginning with the 2017 data, any tabulation with fewer than 3 establishments were omitted from the release. Data for these establishments are included in the broader total.

Year	County	State of Kansas	Non Metro Kansas	County Rank	Per 1000 or \$ Per Capita
2000	.	1,362,735	.	.	.
2001	.	1,279,253	.	.	.
2002	.	1,311,368	.	.	.
2003	.	1,352,119	.	.	.
2004	.	1,378,891	.	.	.
2005	.	1,510,876	.	.	.
2006	.	1,626,320	.	.	.
2007	.	2,233,654	.	.	.
2008	.	1,848,656	.	.	.
2009	.	1,601,158	.	.	.
2010	.	2,003,048	.	.	.
2011	.	1,677,619	.	.	.
2012	.	1,834,430	.	.	.
2013	.	1,938,100	.	.	.
2014	.	2,117,232	.	.	.
2015	3,629	2,451,126	.	.	189.0
2019	1,943	2,757,300	.	.	105.2



**TOTAL ANNUAL PAYROLL(\$000):
ADMIN, SUPPORT, WASTE MGMT.,
AND REMEDIATION**

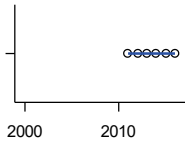
U.S. Census Bureau, County Business Patterns. Beginning with the 2017 data, any tabulation with fewer than 3 establishments were omitted from the release. Data for these establishments are included in the broader total.

Year	County	State of Kansas	Non Metro Kansas	County Rank	Per 1000 or \$ Per Capita
2000	881	1,388,712	.	.	45.5
2001	1,186	1,416,480	.	.	62.0
2002	989	1,378,905	.	.	51.7
2003	1,181	1,387,061	.	.	61.4
2004	1,229	1,544,442	.	.	64.0
2005	1,552	1,694,687	.	.	80.5
2006	.	1,800,846	.	.	.
2007	1,184	1,978,025	.	.	60.9
2008	1,243	2,096,864	.	.	62.6
2009	1,562	1,832,540	.	.	79.2
2010	1,477	2,117,325	.	.	74.8
2011	1,329	2,114,970	.	.	67.5
2012	1,536	2,230,250	.	.	77.9
2013	2,020	2,214,320	.	.	103.9
2014	1,937	2,444,170	.	.	100.3
2015	2,470	2,577,592	.	.	128.6
2016	1,805	2,760,706	.	.	95.2
2017	1,732	3,026,927	.	.	92.0
2018	2,125	3,007,347	.	.	113.7
2019	2,207	3,075,485	.	.	119.5
2020	2,810	3,250,046	.	.	152.7

County: county value. Kansas: state value. County Rank: highest county value ranked #1. (\$000): thousands of dollars. Nonmetro Kansas: Kansas total less Metropolitan Areas as defined by the Office of Management and Budget (OMB; released 3/6/2020). Per 1000: For nonmoney amounts, Per 1000=(county value / county population for the same year as the data) x 1000. \$ Per capita=(county value / county population for the same year as the data). Value= . indicates missing or suppressed data or value not calculated.

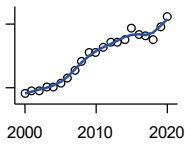
Business

**TOTAL ANNUAL PAYROLL(\$000):
EDUCATIONAL SERVICES**



U.S. Census Bureau, County Business Patterns. Beginning with the 2017 data, any tabulation with fewer than 3 establishments were omitted from the release. Data for these establishments are included in the broader total.

Year	County	State of Kansas	Non Metro Kansas	County Rank	Per 1000 or \$ Per Capita
2000	.	299,843	.	.	.
2001	.	320,606	.	.	.
2002	.	353,531	.	.	.
2003	.	350,814	.	.	.
2004	.	361,644	.	.	.
2005	.	375,781	.	.	.
2006	.	400,565	.	.	.
2007	.	414,233	.	.	.
2008	.	463,210	.	.	.
2009	.	468,856	.	.	.
2010	.	487,670	.	.	.
2011	0	504,964	.	.	0.0
2012	0	508,448	.	.	0.0
2013	0	553,995	.	.	0.0
2014	0	612,073	.	.	0.0
2015	0	579,794	.	.	0.0
2016	0	571,582	.	.	0.0



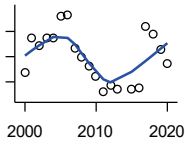
**TOTAL ANNUAL PAYROLL(\$000):
HEALTH CARE AND SOCIAL ASSISTANCE**

U.S. Census Bureau, County Business Patterns. Beginning with the 2017 data, any tabulation with fewer than 3 establishments were omitted from the release. Data for these establishments are included in the broader total.

Year	County	State of Kansas	Non Metro Kansas	County Rank	Per 1000 or \$ Per Capita
2000	13,549	4,120,595	.	.	700.4
2001	14,328	4,445,027	.	.	748.7
2002	14,310	4,705,220	.	.	748.4
2003	15,256	4,939,323	.	.	793.0
2004	15,200	5,232,394	.	.	792.1
2005	16,089	5,487,089	.	.	834.3
2006	17,213	5,814,218	.	.	885.9
2007	19,130	6,186,471	.	.	983.3
2008	21,317	6,490,627	.	.	1,073.3
2009	23,201	6,749,962	.	.	1,175.9
2010	23,421	6,871,727	.	.	1,185.6
2011	24,579	7,129,655	.	.	1,248.6
2012	25,649	7,614,853	.	.	1,301.6
2013	25,877	7,541,515	.	.	1,331.6
2014	26,271	7,733,621	.	.	1,360.8
2015	29,165	7,969,650	.	.	1,518.5
2016	27,491	8,018,706	.	.	1,450.3
2017	27,182	8,384,998	.	.	1,443.6
2018	26,283	8,637,619	.	.	1,406.9
2019	29,473	8,854,414	.	.	1,596.1
2020	31,785	9,309,269	.	.	1,727.3

County: county value. Kansas: state value. County Rank: highest county value ranked #1. (\$000): thousands of dollars. Nonmetro Kansas: Kansas total less Metropolitan Areas as defined by the Office of Management and Budget (OMB; released 3/6/2020). Per 1000: For nonmoney amounts, Per 1000=(county value / county population for the same year as the data) x 1000. \$ Per capita=(county value / county population for the same year as the data). Value= . indicates missing or suppressed data or value not calculated.

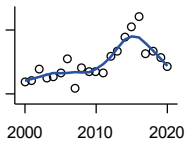
Business



**TOTAL ANNUAL PAYROLL(\$000):
ARTS, ENTERTAINMENT, AND
RECREATION**

U.S. Census Bureau, County Business Patterns. Beginning with the 2017 data, any tabulation with fewer than 3 establishments were omitted from the release. Data for these establishments are included in the broader total.

Year	County	State of Kansas	Non Metro Kansas	County Rank	Per 1000 or \$ Per Capita
2000	1,682	195,784	.	.	87.0
2001	2,378	203,511	.	.	124.3
2002	2,224	206,204	.	.	116.3
2003	2,361	185,049	.	.	122.7
2004	2,376	190,742	.	.	123.8
2005	2,794	196,594	.	.	144.9
2006	2,829	201,049	.	.	145.6
2007	2,177	220,435	.	.	111.9
2008	1,996	236,986	.	.	100.5
2009	1,811	237,116	.	.	91.8
2010	1,606	233,285	.	.	81.3
2011	1,295	234,351	.	.	65.8
2012	1,419	254,169	.	.	72.0
2013	1,349	278,474	.	.	69.4
2014	.	289,103	.	.	.
2015	1,346	300,253	.	.	70.1
2016	1,392	312,902	.	.	73.4
2017	2,594	323,153	.	.	137.8
2018	2,445	325,454	.	.	130.9
2019	2,150	335,362	.	.	116.4
2020	1,851	298,119	.	.	100.6



**TOTAL ANNUAL PAYROLL(\$000):
ACCOMMODATION AND FOOD
SERVICES**

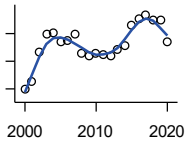
U.S. Census Bureau, County Business Patterns. Beginning with the 2017 data, any tabulation with fewer than 3 establishments were omitted from the release. Data for these establishments are included in the broader total.

Year	County	State of Kansas	Non Metro Kansas	County Rank	Per 1000 or \$ Per Capita
2000	3,551	926,831	.	.	183.6
2001	3,607	960,196	.	.	188.5
2002	4,175	930,510	.	.	218.3
2003	3,755	992,313	.	.	195.2
2004	3,827	1,046,901	.	.	199.4
2005	3,967	1,101,854	.	.	205.7
2006	4,654	1,185,280	.	.	239.5
2007	3,292	1,431,100	.	.	169.2
2008	4,212	1,271,594	.	.	212.1
2009	4,043	1,283,065	.	.	204.9
2010	4,033	1,296,556	.	.	204.2
2011	3,995	1,364,281	.	.	202.9
2012	4,785	1,388,337	.	.	242.8
2013	5,034	1,476,335	.	.	259.0
2014	5,656	1,572,021	.	.	293.0
2015	6,166	1,640,144	.	.	321.0
2016	6,634	1,709,193	.	.	350.0
2017	4,859	1,824,791	.	.	258.1
2018	5,021	1,880,364	.	.	268.8
2019	4,732	1,958,603	.	.	256.3
2020	4,258	1,745,238	.	.	231.4

County: county value. Kansas: state value. County Rank: highest county value ranked #1. (\$000): thousands of dollars. Nonmetro Kansas: Kansas total less Metropolitan Areas as defined by the Office of Management and Budget (OMB; released 3/6/2020). Per 1000: For nonmoney amounts, Per 1000=(county value / county population for the same year as the data) x 1000. \$ Per capita=(county value / county population for the same year as the data). Value= . indicates missing or suppressed data or value not calculated.

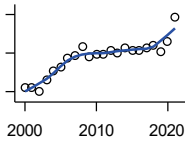
Business

**TOTAL ANNUAL PAYROLL(\$000):
OTHER SERVICES**



U.S. Census Bureau, County Business Patterns. Beginning with the 2017 data, any tabulation with fewer than 3 establishments were omitted from the release. Data for these establishments are included in the broader total.

Year	County	State of Kansas	Non Metro Kansas	County Rank	Per 1000 or \$ Per Capita
2000	3,501	965,540	.	.	181.0
2001	3,626	996,716	.	.	189.5
2002	4,157	1,007,464	.	.	217.4
2003	4,482	979,466	.	.	233.0
2004	4,524	970,383	.	.	235.8
2005	4,358	1,005,537	.	.	226.0
2006	4,370	1,055,932	.	.	224.9
2007	4,494	1,141,551	.	.	231.0
2008	4,140	1,184,016	.	.	208.4
2009	4,094	1,167,154	.	.	207.5
2010	4,143	1,170,201	.	.	209.7
2011	4,109	1,173,775	.	.	208.7
2012	4,098	1,217,210	.	.	208.0
2013	4,216	1,254,933	.	.	217.0
2014	4,291	1,305,563	.	.	222.3
2015	4,660	1,341,075	.	.	242.6
2016	4,774	1,351,375	.	.	251.8
2017	4,839	1,344,179	.	.	257.0
2018	4,750	1,382,801	.	.	254.3
2019	4,742	1,427,711	.	.	256.8
2020	4,359	1,420,859	.	.	236.9



**NOMINAL TAXABLE RETAIL SALES
(million\$)**

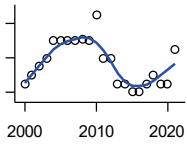
Kansas Department of Revenue

Year	County	State of Kansas	Non Metro Kansas	County Rank	Per 1000 or \$ Per Capita
2000	144.8	30,119.0	8,831.7	28	7.5
2001	144.7	30,202.2	8,700.3	28	7.6
2002	139.7	29,380.8	8,241.5	28	7.3
2003	151.6	30,694.0	8,710.6	28	7.9
2004	161.8	31,922.6	9,062.5	27	8.4
2005	166.0	32,924.2	9,386.6	28	8.6
2006	174.9	34,937.6	10,042.1	28	9.0
2007	177.4	36,180.1	10,553.2	28	9.1
2008	186.4	37,559.5	11,126.9	28	9.4
2009	176.3	35,211.8	10,351.5	28	8.9
2010	178.5	35,655.7	10,606.1	28	9.0
2011	178.4	37,257.0	11,153.5	29	9.1
2012	183.4	38,988.8	11,749.1	29	9.3
2013	179.5	40,009.0	11,993.8	30	9.2
2014	185.9	41,299.0	12,365.4	30	9.6
2015	183.3	41,635.8	11,747.6	29	9.5
2016	182.1	42,040.2	11,523.5	29	9.6
2017	185.4	41,940.1	11,449.9	29	9.8
2018	187.4	42,732.3	11,643.9	30	10.0
2019	180.8	43,732.5	12,062.7	31	9.8
2020	192.5	43,689.9	12,331.7	30	10.5
2021	217.1	48,532.8	13,413.0	28	11.8

County: county value. Kansas: state value. County Rank: highest county value ranked #1. (\$000): thousands of dollars. Nonmetro Kansas: Kansas total less Metropolitan Areas as defined by the Office of Management and Budget (OMB; released 3/6/2020). Per 1000: For nonmoney amounts, Per 1000=(county value / county population for the same year as the data) x 1000. \$ Per capita=(county value / county population for the same year as the data). Value= . indicates missing or suppressed data or value not calculated.

Business

RETAIL PULL FACTOR



Kansas Direct Program, Kansas State University Cooperative Extension Service (1980-1999); Kansas Department of Revenue (2000-)

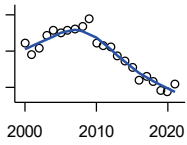
Year	County	State of Kansas	Non Metro Kansas	County Rank	Per 1000 or \$ Per Capita
2000	0.67	.	.	41	.
2001	0.68	.	.	36	.
2002	0.69	.	.	36	.
2003	0.70	.	.	41	.
2004	0.72	.	.	41	.
2005	0.72	.	.	44	.
2006	0.72	.	.	46	.
2007	0.72	.	.	50	.
2008	0.72	.	.	51	.
2009	0.72	.	.	59	.
2010	0.75	.	.	53	.
2011	0.70	.	.	62	.
2012	0.70	.	.	66	.
2013	0.67	.	.	72	.
2014	0.67	.	.	72	.
2015	0.66	.	.	73	.
2016	0.66	.	.	66	.
2017	0.67	.	.	65	.
2018	0.68	.	.	64	.
2019	0.67	.	.	66	.
2020	0.67	.	.	71	.
2021	0.71	.	.	65	.

County: county value. Kansas: state value. County Rank: highest county value ranked #1. (\$000): thousands of dollars. Nonmetro Kansas: Kansas total less Metropolitan Areas as defined by the Office of Management and Budget (OMB; released 3/6/2020). Per 1000: For nonmoney amounts, Per 1000=(county value / county population for the same year as the data) x 1000. \$ Per capita=(county value / county population for the same year as the data). Value= . indicates missing or suppressed data or value not calculated.

Employment

CIVILIAN LABOR FORCE (BLS-Place of Residence; 1990-)

U.S. Department of Labor, Bureau of Labor Statistics (BLS)



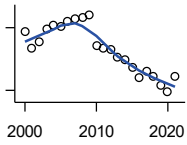
Year	County	State of Kansas	Non Metro Kansas	County Rank	Per 1000 or \$ Per Capita
2000	10,233	1,402,606	482,229	28	529.0
2001	9,919	1,398,521	475,280	28	518.3
2002	10,080	1,419,335	482,428	29	527.2
2003	10,436	1,441,065	490,161	26	542.5
2004	10,564	1,458,910	494,509	26	550.5
2005	10,493	1,458,767	490,047	27	544.1
2006	10,568	1,467,553	498,594	29	543.9
2007	10,625	1,485,414	497,048	28	546.2
2008	10,671	1,493,365	504,522	29	537.3
2009	10,877	1,512,572	516,311	29	551.3
2010	10,233	1,500,463	492,594	30	518.0
2011	10,157	1,498,000	492,563	30	516.0
2012	10,099	1,490,808	489,349	30	512.5
2013	9,882	1,489,395	485,484	30	508.5
2014	9,735	1,494,203	481,813	30	504.3
2015	9,545	1,493,782	477,546	30	497.0
2016	9,209	1,491,961	468,258	30	485.8
2017	9,311	1,488,346	461,063	30	494.5
2018	9,153	1,488,027	456,866	30	489.9
2019	8,915	1,497,517	455,858	30	482.8
2020	8,867	1,493,706	452,935	30	481.8
2021	9,097	1,495,665	453,398	30	492.8

County: county value. Kansas: state value. County Rank: highest county value ranked #1. (\$000): thousands of dollars. Nonmetro Kansas: Kansas total less Metropolitan Areas as defined by the Office of Management and Budget (OMB; released 3/6/2020). Per 1000: For nonmoney amounts, Per 1000=(county value / county population for the same year as the data) x 1000. \$ Per capita=(county value / county population for the same year as the data). Value= . indicates missing or suppressed data or value not calculated.

Employment

EMPLOYED (BLS-Place of Residence; 1990-)

U.S. Department of Labor, Bureau of Labor Statistics (BLS)

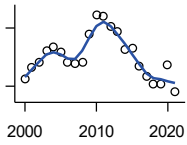


Year	County	State of Kansas	Non Metro Kansas	County Rank	Per 1000 or \$ Per Capita
2000	9,895	1,349,841	464,962	28	511.5
2001	9,524	1,338,775	455,154	28	497.6
2002	9,654	1,347,163	461,241	28	504.9
2003	9,954	1,361,115	467,622	26	517.4
2004	10,061	1,378,355	470,330	26	524.3
2005	10,017	1,384,654	467,722	27	519.4
2006	10,145	1,402,950	479,174	28	522.2
2007	10,211	1,422,109	477,983	28	524.9
2008	10,249	1,425,022	484,056	29	516.0
2009	10,308	1,408,142	485,797	29	522.5
2010	9,565	1,396,172	461,635	30	484.2
2011	9,497	1,402,198	463,723	30	482.4
2012	9,489	1,405,638	463,376	30	481.6
2013	9,299	1,410,470	461,405	30	478.5
2014	9,246	1,426,892	461,797	30	478.9
2015	9,052	1,431,533	457,899	30	471.3
2016	8,803	1,431,920	449,356	30	464.4
2017	8,958	1,434,516	445,003	30	475.8
2018	8,841	1,439,329	442,716	30	473.2
2019	8,605	1,450,705	442,108	30	466.0
2020	8,455	1,408,965	433,229	30	459.5
2021	8,828	1,447,323	441,159	30	478.2

County: county value. Kansas: state value. County Rank: highest county value ranked #1. (\$000): thousands of dollars. Nonmetro Kansas: Kansas total less Metropolitan Areas as defined by the Office of Management and Budget (OMB; released 3/6/2020). Per 1000: For nonmoney amounts, Per 1000=(county value / county population for the same year as the data) x 1000. \$ Per capita=(county value / county population for the same year as the data). Value= . indicates missing or suppressed data or value not calculated.

Employment

UNEMPLOYED (BLS-Place of Residence; 1990-)



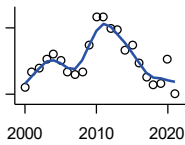
U.S. Department of Labor, Bureau of Labor Statistics (BLS)

Year	County	State of Kansas	Non Metro Kansas	County Rank	Per 1000 or \$ Per Capita
2000	338	52,765	17,267	31	17.5
2001	395	59,746	20,126	32	20.6
2002	426	72,172	21,187	30	22.3
2003	482	79,950	22,539	29	25.1
2004	503	80,555	24,179	31	26.2
2005	476	74,113	22,325	30	24.7
2006	423	64,603	19,420	29	21.8
2007	414	63,305	19,065	29	21.3
2008	422	68,343	20,466	30	21.2
2009	569	104,430	30,514	35	28.8
2010	668	104,291	30,959	31	33.8
2011	660	95,802	28,840	30	33.5
2012	610	85,170	25,973	28	31.0
2013	583	78,925	24,079	28	30.0
2014	489	67,311	20,016	29	25.3
2015	493	62,249	19,647	26	25.7
2016	406	60,041	18,902	31	21.4
2017	353	53,830	16,060	30	18.7
2018	312	48,698	14,150	30	16.7
2019	310	46,812	13,750	29	16.8
2020	412	84,741	19,706	30	22.4
2021	269	48,342	12,239	30	14.6

County: county value. Kansas: state value. County Rank: highest county value ranked #1. (\$000): thousands of dollars. Nonmetro Kansas: Kansas total less Metropolitan Areas as defined by the Office of Management and Budget (OMB; released 3/6/2020). Per 1000: For nonmoney amounts, Per 1000=(county value / county population for the same year as the data) x 1000. \$ Per capita=(county value / county population for the same year as the data). Value= . indicates missing or suppressed data or value not calculated.

Employment

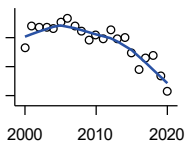
UNEMPLOYMENT RATE (BLS-Place of Residence; 1990-)



U.S. Department of Labor, Bureau of Labor Statistics (BLS)

Year	County	State of Kansas	Non Metro Kansas	County Rank	Per 1000 or \$ Per Capita
2000	3.3	3.8	3.6	52	.
2001	4.0	4.3	4.2	37	.
2002	4.2	5.1	4.4	43	.
2003	4.6	5.5	4.6	41	.
2004	4.8	5.5	4.9	44	.
2005	4.5	5.1	4.6	42	.
2006	4.0	4.4	3.9	36	.
2007	3.9	4.3	3.8	42	.
2008	4.0	4.6	4.1	43	.
2009	5.2	6.9	5.9	53	.
2010	6.5	7.0	6.3	36	.
2011	6.5	6.4	5.9	31	.
2012	6.0	5.7	5.3	31	.
2013	5.9	5.3	5.0	21	.
2014	5.0	4.5	4.2	23	.
2015	5.2	4.2	4.1	11	.
2016	4.4	4.0	4.0	26	.
2017	3.8	3.6	3.5	29	.
2018	3.4	3.3	3.1	30	.
2019	3.5	3.1	3.0	18	.
2020	4.6	5.7	4.4	37	.
2021	3.0	3.2	2.7	29	.

BEA EMPLOYMENT: TOTAL (Place of Work)



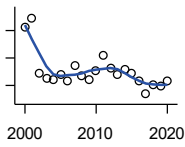
U.S. Bureau of Economic Analysis, Regional Economic Information System (REIS)

Year	County	State of Kansas	Non Metro Kansas	County Rank	Per 1000 or \$ Per Capita
2000	10,072	1,760,312	604,361	31	520.7
2001	10,456	1,767,601	592,672	29	546.3
2002	10,420	1,746,077	585,387	28	545.0
2003	10,431	1,733,694	577,860	28	542.2
2004	10,409	1,750,876	578,750	28	542.4
2005	10,516	1,765,650	577,562	27	545.3
2006	10,585	1,795,507	583,041	27	544.8
2007	10,452	1,844,355	591,924	28	537.3
2008	10,365	1,858,069	594,368	29	521.9
2009	10,211	1,813,184	580,972	28	517.5
2010	10,295	1,801,873	579,758	27	521.2
2011	10,240	1,819,044	583,725	28	520.2
2012	10,375	1,841,393	591,748	28	526.5
2013	10,236	1,869,054	597,236	28	526.7
2014	10,256	1,895,859	601,291	28	531.3
2015	9,997	1,910,954	598,589	28	520.5
2016	9,705	1,916,152	592,580	28	512.0
2017	9,895	1,914,179	584,337	28	525.5
2018	9,937	1,926,242	580,213	28	531.9
2019	9,590	1,925,204	574,496	28	519.3
2020	9,320	1,851,247	556,671	28	506.5

County: county value. Kansas: state value. County Rank: highest county value ranked #1. (\$000): thousands of dollars. Nonmetro Kansas: Kansas total less Metropolitan Areas as defined by the Office of Management and Budget (OMB; released 3/6/2020). Per 1000: For nonmoney amounts, Per 1000=(county value / county population for the same year as the data) x 1000. \$ Per capita=(county value / county population for the same year as the data). Value= . indicates missing or suppressed data or value not calculated.

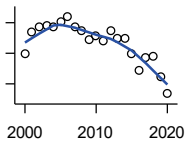
Employment

BEA EMPLOYMENT: FARM



U.S. Bureau of Economic Analysis,
Regional Economic Information System
(REIS)

Year	County	State of Kansas	Non Metro Kansas	County Rank	Per 1000 or \$ Per Capita
2000	1,081	77,477	59,088	15	55.9
2001	1,098	78,177	59,647	15	57.4
2002	997	70,532	53,893	13	52.1
2003	987	68,516	52,099	14	51.3
2004	986	67,586	51,246	14	51.4
2005	995	66,829	50,386	13	51.6
2006	984	64,910	48,728	12	50.6
2007	1,012	65,639	49,037	12	52.0
2008	993	63,820	47,682	11	50.0
2009	985	62,798	46,960	11	49.9
2010	1,003	63,882	47,984	10	50.8
2011	1,029	65,761	49,707	9	52.3
2012	1,007	63,753	48,167	9	51.1
2013	994	62,739	47,255	10	51.2
2014	1,005	64,308	48,722	9	52.1
2015	998	64,416	48,927	9	52.0
2016	984	63,840	48,539	9	51.9
2017	959	61,876	46,936	9	50.9
2018	976	63,233	48,069	9	52.2
2019	974	63,300	48,167	9	52.7
2020	984	64,281	49,038	9	53.5



BEA EMPLOYMENT: NON-FARM

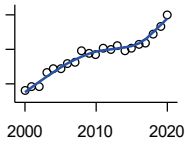
U.S. Bureau of Economic Analysis,
Regional Economic Information System
(REIS)

Year	County	State of Kansas	Non Metro Kansas	County Rank	Per 1000 or \$ Per Capita
2000	8,991	1,682,835	545,273	31	464.8
2001	9,358	1,689,424	533,025	28	489.0
2002	9,423	1,675,545	531,494	28	492.8
2003	9,444	1,665,178	525,761	28	490.9
2004	9,423	1,683,290	527,504	28	491.1
2005	9,521	1,698,821	527,176	28	493.7
2006	9,601	1,730,597	534,313	28	494.2
2007	9,440	1,778,716	542,887	28	485.2
2008	9,372	1,794,249	546,686	29	471.9
2009	9,226	1,750,386	534,012	28	467.6
2010	9,292	1,737,991	531,774	27	470.4
2011	9,211	1,753,283	534,018	27	467.9
2012	9,368	1,777,640	543,581	28	475.4
2013	9,242	1,806,315	549,981	28	475.6
2014	9,251	1,831,551	552,569	28	479.2
2015	8,999	1,846,538	549,662	28	468.6
2016	8,721	1,852,312	544,041	29	460.1
2017	8,936	1,852,303	537,401	28	474.6
2018	8,961	1,863,009	532,144	28	479.7
2019	8,616	1,861,904	526,329	28	466.6
2020	8,336	1,786,966	507,633	28	453.0

County: county value. Kansas: state value. County Rank: highest county value ranked #1. (\$000): thousands of dollars. Nonmetro Kansas: Kansas total less Metropolitan Areas as defined by the Office of Management and Budget (OMB; released 3/6/2020). Per 1000: For nonmoney amounts, Per 1000=(county value / county population for the same year as the data) x 1000. \$ Per capita=(county value / county population for the same year as the data). Value= . indicates missing or suppressed data or value not calculated.

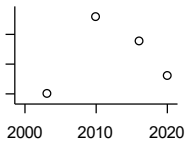
Employment

AVERAGE WAGE PER JOB (\$)



U.S. Bureau of Economic Analysis,
Regional Economic Information System
(REIS)

Year	County	State of Kansas	Non Metro Kansas	County Rank	Per 1000 or \$ Per Capita
2000	22,988	31,854	24,396	48	.
2001	24,066	32,859	26,379	61	.
2002	24,093	33,707	26,331	50	.
2003	28,192	35,078	28,911	46	.
2004	29,295	35,932	29,747	41	.
2005	29,209	37,467	31,646	59	.
2006	30,792	40,038	31,993	41	.
2007	31,404	41,500	33,484	61	.
2008	34,755	44,197	36,256	52	.
2009	33,799	43,860	35,739	55	.
2010	33,553	45,370	38,631	76	.
2011	35,335	48,280	42,324	76	.
2012	34,882	50,549	42,015	84	.
2013	36,183	52,629	46,073	89	.
2014	34,610	51,959	43,562	84	.
2015	35,446	52,250	42,320	74	.
2016	36,521	51,664	41,964	70	.
2017	36,955	53,007	42,137	67	.
2018	39,377	54,790	44,514	69	.
2019	41,501	56,956	45,336	59	.
2020	44,945	60,597	49,183	67	.



BEA EMPLOYMENT: FORESTRY, FISHING, HUNTING, AND AG SUPPORT

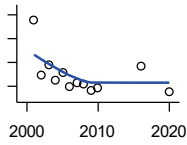
U.S. Bureau of Economic Analysis,
Regional Economic Information System
(REIS)

Year	County	State of Kansas	Non Metro Kansas	County Rank	Per 1000 or \$ Per Capita
2001	.	7,059	.	.	.
2002	.	8,045	.	.	.
2003	100	7,313	.	9	.
2004	.	7,623	.	.	.
2005	.	7,962	.	.	.
2006	.	7,748	.	.	.
2007	.	8,228	.	.	.
2008	.	8,646	.	.	.
2009	.	8,982	.	.	.
2010	113	9,251	.	12	.
2011	.	9,410	.	.	.
2012	.	9,691	.	.	.
2013	.	10,014	.	.	.
2014	.	10,708	.	.	.
2015	.	10,020	.	.	.
2016	109	10,383	.	17	.
2020	103	10,529	.	18	.

County: county value. Kansas: state value. County Rank: highest county value ranked #1. (\$000): thousands of dollars. Nonmetro Kansas: Kansas total less Metropolitan Areas as defined by the Office of Management and Budget (OMB; released 3/6/2020). Per 1000: For nonmoney amounts, Per 1000=(county value / county population for the same year as the data) x 1000. \$ Per capita=(county value / county population for the same year as the data). Value= . indicates missing or suppressed data or value not calculated.

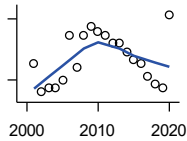
Employment

BEA EMPLOYMENT: MINING



U.S. Bureau of Economic Analysis,
Regional Economic Information System
(REIS)

Year	County	State of Kansas	Non Metro Kansas	County Rank	Per 1000 or \$ Per Capita
2001	96	19,592	.	35	.
2002	49	17,635	.	38	.
2003	58	19,869	.	38	.
2004	45	18,466	.	43	.
2005	51	19,489	.	42	.
2006	40	22,403	.	47	.
2007	43	24,043	.	44	.
2008	42	31,467	.	44	.
2009	36	29,941	.	44	.
2010	39	36,124	.	44	.
2011	.	31,658	.	.	.
2012	.	42,405	.	.	.
2013	.	46,585	.	.	.
2014	.	45,526	.	.	.
2015	.	46,460	.	.	.
2016	57	48,555	.	55	.
2020	35	26,272	.	51	.



BEA EMPLOYMENT: UTILITIES

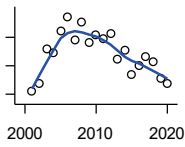
U.S. Bureau of Economic Analysis,
Regional Economic Information System
(REIS)

Year	County	State of Kansas	Non Metro Kansas	County Rank	Per 1000 or \$ Per Capita
2001	59	7,608	.	6	.
2002	52	7,087	.	7	.
2003	53	7,253	.	6	.
2004	53	7,356	.	7	.
2005	55	7,447	.	6	.
2006	66	7,478	.	7	.
2007	58	7,584	.	8	.
2008	66	7,855	.	8	.
2009	68	7,941	.	8	.
2010	67	8,028	.	8	.
2011	66	8,213	.	7	.
2012	64	8,155	.	6	.
2013	64	7,949	.	6	.
2014	62	7,985	.	8	.
2015	60	7,040	.	9	.
2016	59	7,133	.	9	.
2017	56	6,838	.	12	.
2018	54	6,639	.	11	.
2019	53	6,492	.	11	.
2020	71	6,573	.	16	.

County: county value. Kansas: state value. County Rank: highest county value ranked #1. (\$000): thousands of dollars. Nonmetro Kansas: Kansas total less Metropolitan Areas as defined by the Office of Management and Budget (OMB; released 3/6/2020). Per 1000: For nonmoney amounts, Per 1000=(county value / county population for the same year as the data) x 1000. \$ Per capita=(county value / county population for the same year as the data). Value= . indicates missing or suppressed data or value not calculated.

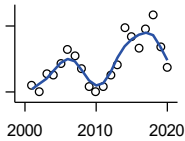
Employment

**BEA EMPLOYMENT:
CONSTRUCTION**



U.S. Bureau of Economic Analysis,
Regional Economic Information System
(REIS)

Year	County	State of Kansas	Non Metro Kansas	County Rank	Per 1000 or \$ Per Capita
2001	405	92,647	27,972	33	.
2002	418	90,370	.	30	.
2003	480	91,725	26,681	30	.
2004	472	93,271	.	31	.
2005	511	94,836	.	29	.
2006	536	97,449	.	28	.
2007	495	99,119	29,179	32	.
2008	526	97,741	.	30	.
2009	490	90,165	28,077	30	.
2010	504	84,708	26,402	28	.
2011	498	83,332	25,999	27	.
2012	507	85,966	.	27	.
2013	462	88,094	.	30	.
2014	477	91,143	.	29	.
2015	434	91,458	27,583	28	.
2016	450	93,539	27,151	26	.
2017	465	92,046	25,579	26	.
2018	456	92,985	25,530	26	.
2019	427	94,858	25,701	27	.
2020	419	94,186	26,085	29	.



**BEA EMPLOYMENT:
MANUFACTURING**

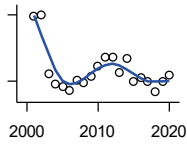
U.S. Bureau of Economic Analysis,
Regional Economic Information System
(REIS)

Year	County	State of Kansas	Non Metro Kansas	County Rank	Per 1000 or \$ Per Capita
2001	1,332	199,980	73,170	24	.
2002	1,300	188,905	70,691	26	.
2003	1,382	179,013	68,418	25	.
2004	1,378	181,738	69,669	25	.
2005	1,429	185,459	71,072	24	.
2006	1,495	188,047	71,704	24	.
2007	1,466	192,930	73,488	24	.
2008	1,405	193,116	72,235	27	.
2009	1,323	173,854	64,961	22	.
2010	1,299	166,000	62,884	22	.
2011	1,322	167,302	64,361	22	.
2012	1,376	169,308	65,944	22	.
2013	1,423	170,113	67,251	23	.
2014	1,590	169,307	68,299	20	.
2015	1,554	168,324	66,978	20	.
2016	1,502	167,723	65,796	22	.
2017	1,585	168,438	66,795	20	.
2018	1,651	171,778	68,181	20	.
2019	1,507	173,605	67,879	22	.
2020	1,412	165,228	65,658	21	.

County: county value. Kansas: state value. County Rank: highest county value ranked #1. (\$000): thousands of dollars. Nonmetro Kansas: Kansas total less Metropolitan Areas as defined by the Office of Management and Budget (OMB; released 3/6/2020). Per 1000: For nonmoney amounts, Per 1000=(county value / county population for the same year as the data) x 1000. \$ Per capita=(county value / county population for the same year as the data). Value= . indicates missing or suppressed data or value not calculated.

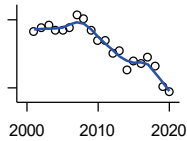
Employment

BEA EMPLOYMENT: WHOLESALE TRADE



U.S. Bureau of Economic Analysis,
Regional Economic Information System
(REIS)

Year	County	State of Kansas	Non Metro Kansas	County Rank	Per 1000 or \$ Per Capita
2001	448	65,698	.	19	.
2002	450	65,408	.	17	.
2003	318	63,504	.	20	.
2004	294	64,434	.	24	.
2005	287	64,587	.	23	.
2006	279	64,743	.	27	.
2007	302	65,993	.	24	.
2008	296	67,693	.	25	.
2009	312	65,954	.	22	.
2010	333	64,376	.	20	.
2011	355	64,712	.	22	.
2012	353	63,973	.	19	.
2013	320	64,999	.	21	.
2014	351	69,295	.	20	.
2015	300	68,444	.	24	.
2016	309	64,843	.	23	.
2017	300	65,014	.	24	.
2018	275	64,745	.	28	.
2019	299	63,324	.	22	.
2020	314	60,844	.	22	.



BEA EMPLOYMENT: RETAIL TRADE

U.S. Bureau of Economic Analysis,
Regional Economic Information System
(REIS)

Year	County	State of Kansas	Non Metro Kansas	County Rank	Per 1000 or \$ Per Capita
2001	1,147	198,069	.	26	.
2002	1,166	196,112	.	26	.
2003	1,177	194,545	64,173	28	.
2004	1,154	192,957	63,265	28	.
2005	1,154	191,656	62,506	27	.
2006	1,163	190,391	62,082	28	.
2007	1,222	190,643	61,716	25	.
2008	1,206	185,907	59,783	25	.
2009	1,153	181,262	58,714	28	.
2010	1,111	177,858	57,470	27	.
2011	1,108	180,548	57,734	28	.
2012	1,053	180,596	57,349	28	.
2013	1,063	183,245	57,556	27	.
2014	978	185,899	57,855	28	.
2015	1,017	188,421	58,516	28	.
2016	1,006	188,505	57,864	28	.
2017	1,034	186,633	56,715	28	.
2018	998	183,323	.	27	.
2019	906	177,240	53,427	28	.
2020	881	171,777	52,563	28	.

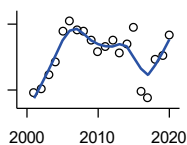
County: county value. Kansas: state value. County Rank: highest county value ranked #1. (\$000): thousands of dollars. Nonmetro Kansas: Kansas total less Metropolitan Areas as defined by the Office of Management and Budget (OMB; released 3/6/2020). Per 1000: For nonmoney amounts, Per 1000=(county value / county population for the same year as the data) x 1000. \$ Per capita=(county value / county population for the same year as the data). Value= . indicates missing or suppressed data or value not calculated.

Employment

**BEA EMPLOYMENT:
TRANSPORTATION AND
WAREHOUSING**

U.S. Bureau of Economic Analysis,
Regional Economic Information System
(REIS)

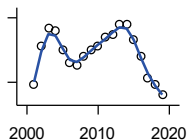
Year	County	State of Kansas	Non Metro Kansas	County Rank	Per 1000 or \$ Per Capita
2001	358	56,302	.	16	.
2002	361	55,319	.	16	.
2003	374	55,509	.	16	.
2004	386	55,479	.	15	.
2005	414	56,287	.	15	.
2006	423	57,506	.	15	.
2007	415	59,277	.	16	.
2008	414	58,725	.	17	.
2009	405	56,238	.	17	.
2010	395	55,179	.	17	.
2011	400	57,449	.	14	.
2012	405	59,756	.	14	.
2013	394	59,780	.	16	.
2014	402	60,565	.	17	.
2015	417	63,256	.	18	.
2016	359	65,705	.	18	.
2017	353	70,641	.	20	.
2018	388	75,308	.	21	.
2019	391	81,209	.	21	.
2020	410	80,543	.	22	.



BEA EMPLOYMENT: INFORMATION

U.S. Bureau of Economic Analysis,
Regional Economic Information System
(REIS)

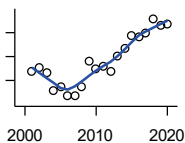
Year	County	State of Kansas	Non Metro Kansas	County Rank	Per 1000 or \$ Per Capita
2001	49	54,895	.	46	.
2002	67	50,728	.	36	.
2003	75	48,328	6,860	35	.
2004	74	45,617	.	34	.
2005	65	43,840	.	37	.
2006	59	43,925	.	38	.
2007	58	45,115	.	39	.
2008	62	42,958	.	37	.
2009	65	38,677	.	36	.
2010	67	33,432	.	36	.
2011	71	32,160	.	35	.
2012	72	31,829	.	34	.
2013	77	31,737	.	32	.
2014	77	32,316	.	31	.
2015	70	25,282	.	32	.
2016	62	24,998	.	34	.
2017	52	24,004	.	35	.
2018	49	23,165	.	36	.
2019	44	22,078	.	40	.



County: county value. Kansas: state value. County Rank: highest county value ranked #1. (\$000): thousands of dollars. Nonmetro Kansas: Kansas total less Metropolitan Areas as defined by the Office of Management and Budget (OMB; released 3/6/2020). Per 1000: For nonmoney amounts, Per 1000=(county value / county population for the same year as the data) x 1000. \$ Per capita=(county value / county population for the same year as the data). Value= . indicates missing or suppressed data or value not calculated.

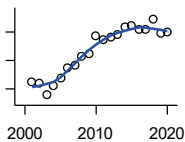
Employment

BEA EMPLOYMENT: FINANCE AND INSURANCE



U.S. Bureau of Economic Analysis,
Regional Economic Information System
(REIS)

Year	County	State of Kansas	Non Metro Kansas	County Rank	Per 1000 or \$ Per Capita
2001	319	76,118	.	29	.
2002	327	78,206	.	29	.
2003	315	78,441	.	29	.
2004	278	78,350	.	32	.
2005	287	78,952	.	31	.
2006	267	80,900	.	33	.
2007	269	86,094	.	32	.
2008	286	89,590	.	31	.
2009	340	93,573	.	30	.
2010	324	92,428	.	32	.
2011	329	99,495	.	32	.
2012	318	98,640	.	33	.
2013	350	99,998	.	32	.
2014	367	98,209	.	32	.
2015	394	100,534	.	28	.
2016	391	102,699	.	27	.
2017	398	101,563	.	27	.
2018	429	102,816	.	26	.
2019	416	100,276	.	26	.
2020	417	101,626	.	26	.



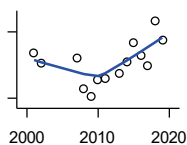
BEA EMPLOYMENT: REAL ESTATE, RENTAL, AND LEASING

U.S. Bureau of Economic Analysis,
Regional Economic Information System
(REIS)

Year	County	State of Kansas	Non Metro Kansas	County Rank	Per 1000 or \$ Per Capita
2001	163	45,237	.	29	.
2002	159	44,970	.	28	.
2003	139	47,095	.	31	.
2004	156	50,181	.	31	.
2005	170	53,335	.	31	.
2006	187	55,342	.	27	.
2007	192	57,694	.	31	.
2008	208	57,933	.	28	.
2009	212	57,132	.	27	.
2010	243	59,578	.	26	.
2011	237	61,821	.	27	.
2012	241	60,432	.	27	.
2013	246	62,134	.	27	.
2014	258	64,705	.	27	.
2015	261	66,604	.	27	.
2016	254	68,395	.	27	.
2017	254	70,304	.	28	.
2018	272	72,631	.	28	.
2019	248	69,119	.	27	.
2020	249	68,452	.	28	.

County: county value. Kansas: state value. County Rank: highest county value ranked #1. (\$000): thousands of dollars. Nonmetro Kansas: Kansas total less Metropolitan Areas as defined by the Office of Management and Budget (OMB; released 3/6/2020). Per 1000: For nonmoney amounts, Per 1000=(county value / county population for the same year as the data) x 1000. \$ Per capita=(county value / county population for the same year as the data). Value= . indicates missing or suppressed data or value not calculated.

Employment



BEA EMPLOYMENT: PROFESSIONAL AND TECHNICAL SERVICES

U.S. Bureau of Economic Analysis, Regional Economic Information System (REIS)

Year	County	State of Kansas	Non Metro Kansas	County Rank	Per 1000 or \$ Per Capita
2001	241	81,396	.	25	.
2002	232	80,684	.	24	.
2003	.	80,311	.	.	.
2004	.	85,550	.	.	.
2005	.	85,003	.	.	.
2006	.	87,381	.	.	.
2007	236	92,717	.	27	.
2008	208	95,362	.	35	.
2009	202	93,232	.	32	.
2010	217	93,037	.	32	.
2011	218	93,237	.	31	.
2012	.	95,360	.	.	.
2013	223	100,795	.	32	.
2014	233	102,210	.	32	.
2015	250	105,625	.	28	.
2016	239	108,059	.	27	.
2017	229	109,041	.	25	.
2018	270	110,513	.	23	.
2019	252	109,637	.	26	.

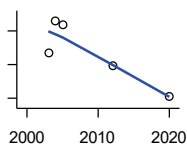
BEA EMPLOYMENT: MANAGEMENT OF COMPANIES AND ENTERPRISES

U.S. Bureau of Economic Analysis, Regional Economic Information System (REIS)

Year	County	State of Kansas	Non Metro Kansas	County Rank	Per 1000 or \$ Per Capita
2001	.	13,832	.	.	.
2002	.	12,576	.	.	.
2003	.	11,135	.	.	.
2004	.	10,614	.	.	.
2005	.	11,811	.	.	.
2006	.	13,061	.	.	.
2007	.	13,398	.	.	.
2008	.	15,234	.	.	.
2009	.	14,849	.	.	.
2010	.	16,579	.	.	.
2011	.	15,343	.	.	.
2012	.	15,075	.	.	.
2013	.	16,667	.	.	.
2014	.	20,441	.	.	.
2015	.	29,604	.	.	.
2016	.	27,824	.	.	.

County: county value. Kansas: state value. County Rank: highest county value ranked #1. (\$000): thousands of dollars. Nonmetro Kansas: Kansas total less Metropolitan Areas as defined by the Office of Management and Budget (OMB; released 3/6/2020). Per 1000: For nonmoney amounts, Per 1000=(county value / county population for the same year as the data) x 1000. \$ Per capita=(county value / county population for the same year as the data). Value= . indicates missing or suppressed data or value not calculated.

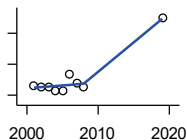
Employment



**BEA EMPLOYMENT:
ADMINISTRATIVE AND WASTE
SERVICES**

U.S. Bureau of Economic Analysis,
Regional Economic Information System
(REIS)

Year	County	State of Kansas	Non Metro Kansas	County Rank	Per 1000 or \$ Per Capita
2001	.	81,573	.	.	.
2002	.	82,992	.	.	.
2003	294	81,298	.	22	.
2004	332	85,721	.	24	.
2005	327	89,933	.	25	.
2006	.	93,688	.	.	.
2007	.	98,865	.	.	.
2008	.	97,440	.	.	.
2009	.	92,455	.	.	.
2010	.	93,675	.	.	.
2011	.	97,969	.	.	.
2012	279	100,490	.	27	.
2013	.	104,680	.	.	.
2014	.	107,218	18,836	.	.
2015	.	103,436	18,767	.	.
2016	.	103,233	18,428	.	.
2020	242	95,361	.	29	.



**BEA EMPLOYMENT: EDUCATIONAL
SERVICES**

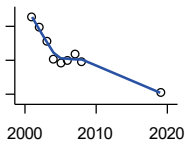
U.S. Bureau of Economic Analysis,
Regional Economic Information System
(REIS)

Year	County	State of Kansas	Non Metro Kansas	County Rank	Per 1000 or \$ Per Capita
2001	65	21,169	.	16	.
2002	64	22,173	.	17	.
2003	64	22,651	.	16	.
2004	57	21,601	.	20	.
2005	56	22,177	.	16	.
2006	83	22,438	.	15	.
2007	70	23,647	.	15	.
2008	63	24,653	.	18	.
2009	.	25,120	.	.	.
2010	.	26,071	.	.	.
2011	.	26,080	.	.	.
2012	.	26,625	.	.	.
2013	.	27,508	.	.	.
2014	.	28,708	.	.	.
2015	.	28,794	.	.	.
2016	.	27,996	.	.	.
2019	175	29,586	.	16	.

County: county value. Kansas: state value. County Rank: highest county value ranked #1. (\$000): thousands of dollars. Nonmetro Kansas: Kansas total less Metropolitan Areas as defined by the Office of Management and Budget (OMB; released 3/6/2020). Per 1000: For nonmoney amounts, Per 1000=(county value / county population for the same year as the data) x 1000. \$ Per capita=(county value / county population for the same year as the data). Value= . indicates missing or suppressed data or value not calculated.

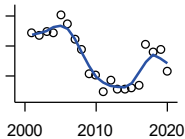
Employment

BEA EMPLOYMENT: HEALTH CARE AND SOCIAL ASSISTANCE



U.S. Bureau of Economic Analysis, Regional Economic Information System (REIS)

Year	County	State of Kansas	Non Metro Kansas	County Rank	Per 1000 or \$ Per Capita
2001	728	165,415	.	19	.
2002	696	168,198	.	20	.
2003	656	169,654	.	24	.
2004	602	172,796	.	26	.
2005	592	173,949	.	22	.
2006	601	176,919	.	20	.
2007	620	182,160	.	20	.
2008	594	186,051	.	23	.
2009	.	188,499	.	.	.
2010	.	188,383	.	.	.
2011	.	190,736	.	.	.
2012	.	192,991	.	.	.
2013	.	193,687	.	.	.
2014	.	194,632	.	.	.
2015	.	199,724	.	.	.
2016	.	201,830	.	.	.
2019	504	206,646	.	26	.



BEA EMPLOYMENT: ARTS, ENTERTAINMENT, AND RECREATION

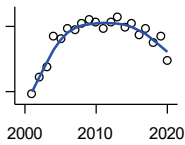
U.S. Bureau of Economic Analysis, Regional Economic Information System (REIS)

Year	County	State of Kansas	Non Metro Kansas	County Rank	Per 1000 or \$ Per Capita
2001	222	25,012	.	14	.
2002	218	25,668	.	15	.
2003	224	24,116	.	15	.
2004	223	25,355	.	15	.
2005	252	26,067	.	13	.
2006	236	26,505	.	14	.
2007	212	27,489	.	17	.
2008	195	27,501	.	18	.
2009	154	27,203	.	23	.
2010	152	27,479	.	23	.
2011	123	28,487	.	24	.
2012	142	30,729	.	24	.
2013	129	31,068	.	25	.
2014	129	32,154	.	25	.
2015	130	31,169	.	25	.
2016	134	32,373	.	24	.
2017	203	33,213	.	21	.
2018	189	33,837	.	21	.
2019	194	33,082	.	22	.
2020	158	26,644	.	22	.

County: county value. Kansas: state value. County Rank: highest county value ranked #1. (\$000): thousands of dollars. Nonmetro Kansas: Kansas total less Metropolitan Areas as defined by the Office of Management and Budget (OMB; released 3/6/2020). Per 1000: For nonmoney amounts, Per 1000=(county value / county population for the same year as the data) x 1000. \$ Per capita=(county value / county population for the same year as the data). Value= . indicates missing or suppressed data or value not calculated.

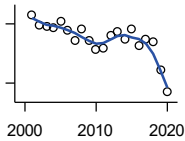
Employment

BEA EMPLOYMENT: GOVERNMENT AND GOVERNMENT ENTERPRISES



U.S. Bureau of Economic Analysis, Regional Economic Information System (REIS)

Year	County	State of Kansas	Non Metro Kansas	County Rank	Per 1000 or \$ Per Capita
2001	1,694	282,293	102,993	31	.
2002	1,733	281,427	103,581	30	.
2003	1,757	282,459	103,389	30	.
2004	1,828	283,877	103,946	29	.
2005	1,821	282,798	103,194	29	.
2006	1,844	288,372	104,103	29	.
2007	1,843	294,413	104,598	29	.
2008	1,857	298,580	104,718	30	.
2009	1,865	300,422	104,081	30	.
2010	1,859	303,875	103,382	31	.
2011	1,844	299,952	101,535	30	.
2012	1,860	298,068	101,180	30	.
2013	1,872	297,689	101,232	30	.
2014	1,848	296,956	100,634	29	.
2015	1,858	295,799	99,719	29	.
2016	1,831	291,536	98,520	29	.
2017	1,844	295,748	99,542	29	.
2018	1,813	298,105	99,499	29	.
2019	1,829	302,017	100,227	29	.
2020	1,773	292,583	96,477	28	.



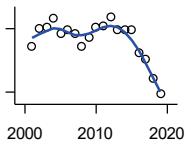
BEA EMPLOYMENT: ACCOMMODATION AND FOOD SERVICES

U.S. Bureau of Economic Analysis, Regional Economic Information System (REIS)

Year	County	State of Kansas	Non Metro Kansas	County Rank	Per 1000 or \$ Per Capita
2001	573	103,353	.	25	.
2002	546	103,692	.	27	.
2003	544	105,138	.	26	.
2004	541	106,694	.	30	.
2005	555	107,303	.	30	.
2006	535	109,888	.	30	.
2007	509	110,863	.	29	.
2008	536	111,092	.	27	.
2009	507	109,353	.	31	.
2010	485	108,628	.	28	.
2011	487	110,514	.	29	.
2012	520	112,574	.	28	.
2013	532	114,102	.	27	.
2014	510	115,768	.	29	.
2015	536	118,503	.	27	.
2016	494	119,764	.	29	.
2017	510	121,181	.	29	.
2018	506	121,900	.	30	.
2019	434	122,819	.	32	.
2020	377	106,561	.	31	.

County: county value. Kansas: state value. County Rank: highest county value ranked #1. (\$000): thousands of dollars. Nonmetro Kansas: Kansas total less Metropolitan Areas as defined by the Office of Management and Budget (OMB; released 3/6/2020). Per 1000: For nonmoney amounts, Per 1000=(county value / county population for the same year as the data) x 1000. \$ Per capita=(county value / county population for the same year as the data). Value= . indicates missing or suppressed data or value not calculated.

Employment

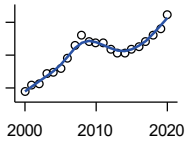


BEA EMPLOYMENT: OTHER SERVICES, EXCEPT PUBLIC ADMINISTRATION

U.S. Bureau of Economic Analysis, Regional Economic Information System (REIS)

Year	County	State of Kansas	Non Metro Kansas	County Rank	Per 1000 or \$ Per Capita
2001	657	92,176	.	26	.
2002	700	95,350	.	26	.
2003	703	95,821	32,629	24	.
2004	725	95,610	.	25	.
2005	688	95,930	32,555	26	.
2006	698	96,413	.	24	.
2007	687	98,444	.	26	.
2008	659	96,705	.	26	.
2009	680	95,534	.	26	.
2010	705	93,302	.	25	.
2011	707	94,865	.	24	.
2012	728	94,977	.	25	.
2013	699	95,471	.	25	.
2014	697	97,806	.	25	.
2015	698	98,041	.	26	.
2016	643	97,219	.	27	.
2017	627	96,568	.	26	.
2018	583	98,645	.	28	.
2019	545	98,638	.	28	.

Income



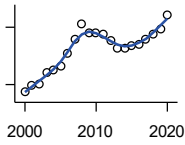
BEA PER CAPITA PERSONAL INCOME (\$)

U.S. Bureau of Economic Analysis, Regional Economic Information System (REIS)

Year	County	State of Kansas	Non Metro Kansas	County Rank	Per 1000 or \$ Per Capita
2000	23,779	28,253	23,116	55	.
2001	26,023	29,112	24,576	40	.
2002	26,155	29,248	24,314	23	.
2003	29,372	30,074	26,017	22	.
2004	29,940	30,843	26,583	14	.
2005	31,072	32,545	28,356	32	.
2006	34,025	35,690	29,782	11	.
2007	37,769	38,057	32,034	13	.
2008	41,081	41,257	35,211	22	.
2009	38,937	39,431	33,876	22	.
2010	38,921	39,960	35,795	43	.
2011	38,862	43,015	39,041	63	.
2012	36,910	45,294	39,660	77	.
2013	35,560	46,174	41,747	94	.
2014	35,710	47,013	41,042	95	.
2015	36,738	47,332	40,638	88	.
2016	37,453	47,326	40,797	82	.
2017	39,049	48,756	41,314	81	.
2018	41,120	50,811	43,283	80	.
2019	42,873	52,820	44,491	74	.
2020	47,348	55,677	48,415	65	.

County: county value. Kansas: state value. County Rank: highest county value ranked #1. (\$000): thousands of dollars. Nonmetro Kansas: Kansas total less Metropolitan Areas as defined by the Office of Management and Budget (OMB; released 3/6/2020). Per 1000: For nonmoney amounts, Per 1000=(county value / county population for the same year as the data) x 1000. \$ Per capita=(county value / county population for the same year as the data). Value= . indicates missing or suppressed data or value not calculated.

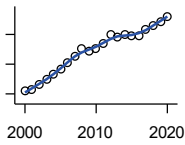
Income



**SOURCES OF PERSONAL INCOME:
TOTAL PERSONAL INCOME (\$000)**

U.S. Bureau of Economic Analysis,
Regional Economic Information System
(REIS)

Year	County	State of Kansas	Non Metro Kansas	County Rank	Per 1000 or \$ Per Capita
2000	460,098	76,105,125	22,273,838	27	23,785.0
2001	498,030	78,664,651	23,411,174	26	26,023.1
2002	500,106	79,365,190	23,000,314	26	26,154.8
2003	565,060	81,890,340	24,494,191	25	29,372.1
2004	574,519	84,335,940	24,924,467	26	29,940.0
2005	599,227	89,346,228	26,452,291	26	31,072.2
2006	661,076	98,610,188	27,661,596	25	34,025.2
2007	734,753	105,943,199	29,715,946	26	37,768.7
2008	815,944	115,852,478	32,614,565	26	41,080.7
2009	768,229	111,697,350	31,394,702	26	38,937.1
2010	769,511	114,239,828	33,291,419	26	38,954.7
2011	765,046	123,558,772	36,221,488	27	38,864.4
2012	727,414	130,948,127	36,696,759	28	36,915.2
2013	691,140	133,979,908	38,513,959	30	35,565.3
2014	689,590	136,878,718	37,680,598	29	35,720.8
2015	705,880	138,336,768	37,081,851	29	36,753.1
2016	710,522	138,533,890	36,930,885	29	37,482.7
2017	735,252	142,729,689	37,104,963	30	39,048.9
2018	765,694	148,955,739	38,589,364	30	40,985.7
2019	788,044	154,961,001	39,424,148	30	42,675.4
2020	864,862	163,462,179	42,618,591	30	46,998.3



**SOURCES OF PERSONAL INCOME:
WAGES AND SALARIES (\$000)**

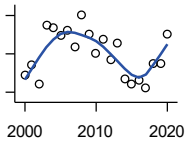
U.S. Bureau of Economic Analysis,
Regional Economic Information System
(REIS)

Year	County	State of Kansas	Non Metro Kansas	County Rank	Per 1000 or \$ Per Capita
2000	163,574	41,766,878	10,254,250	30	8,456.1
2001	166,153	43,269,734	10,518,206	31	8,681.8
2002	172,292	43,875,159	10,696,876	30	9,010.6
2003	179,232	44,488,560	10,894,971	30	9,316.6
2004	187,121	46,702,068	11,333,617	30	9,751.5
2005	192,610	48,537,956	11,614,130	29	9,987.6
2006	202,357	52,083,584	12,299,340	29	10,415.2
2007	211,430	55,442,368	13,093,908	30	10,868.2
2008	221,560	57,623,385	13,647,143	30	11,155.0
2009	217,400	55,605,578	13,199,674	27	11,018.8
2010	220,595	56,089,711	13,345,291	27	11,167.1
2011	227,451	58,104,706	13,856,458	28	11,554.5
2012	239,597	60,616,457	14,473,599	28	12,159.2
2013	235,906	61,872,023	14,781,792	29	12,139.5
2014	240,554	64,457,652	15,385,500	29	12,460.7
2015	238,475	66,729,598	15,454,485	31	12,416.7
2016	237,622	67,253,399	15,422,058	31	12,535.5
2017	246,203	68,830,861	15,731,853	31	13,075.7
2018	252,239	71,580,544	16,311,725	32	13,501.7
2019	257,725	74,404,771	16,882,299	31	13,956.7
2020	264,102	75,798,310	17,251,300	30	14,351.8

County: county value. Kansas: state value. County Rank: highest county value ranked #1. (\$000): thousands of dollars. Nonmetro Kansas: Kansas total less Metropolitan Areas as defined by the Office of Management and Budget (OMB; released 3/6/2020). Per 1000: For nonmoney amounts, Per 1000=(county value / county population for the same year as the data) x 1000. \$ Per capita=(county value / county population for the same year as the data). Value= . indicates missing or suppressed data or value not calculated.

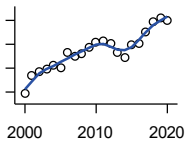
Income

**SOURCES OF PERSONAL INCOME:
PROPRIETORS-FARM (\$000)**



U.S. Bureau of Economic Analysis,
Regional Economic Information System
(REIS)

Year	County	State of Kansas	Non Metro Kansas	County Rank	Per 1000 or \$ Per Capita
2000	9,094	668,539	673,707	35	470.1
2001	14,137	779,473	769,336	20	738.7
2002	4,136	145,064	187,033	23	216.3
2003	34,964	1,281,076	1,195,298	3	1,817.4
2004	33,907	1,149,425	938,524	5	1,767.0
2005	29,922	1,609,604	1,469,139	13	1,551.6
2006	32,463	766,047	663,735	3	1,670.9
2007	23,373	1,131,607	1,040,350	8	1,201.4
2008	40,349	1,582,092	1,404,900	3	2,031.5
2009	30,102	1,585,995	1,390,349	14	1,525.7
2010	20,459	2,149,482	2,029,067	42	1,035.7
2011	27,708	3,188,519	2,989,880	50	1,407.6
2012	16,701	2,519,555	2,296,875	61	847.6
2013	25,802	4,499,190	4,158,419	62	1,327.7
2014	6,979	2,231,181	2,157,992	70	361.5
2015	4,295	1,300,733	1,294,370	60	223.6
2016	6,366	1,577,060	1,564,511	48	335.8
2017	2,145	838,480	838,290	56	113.9
2018	15,171	1,050,662	971,690	25	812.1
2019	15,170	998,038	878,247	28	821.5
2020	30,015	2,151,349	1,887,881	16	1,631.1



**SOURCES OF PERSONAL INCOME:
PROPRIETORS-NONFARM (\$000)**

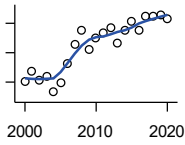
U.S. Bureau of Economic Analysis,
Regional Economic Information System
(REIS)

Year	County	State of Kansas	Non Metro Kansas	County Rank	Per 1000 or \$ Per Capita
2000	19,225	4,580,476	1,493,470	34	993.8
2001	26,913	4,510,530	1,855,621	31	1,406.3
2002	28,613	5,036,100	1,966,784	31	1,496.4
2003	29,844	4,719,377	1,916,735	30	1,551.3
2004	31,176	4,003,922	2,073,898	29	1,624.7
2005	30,240	4,455,294	2,200,971	31	1,568.1
2006	36,780	7,343,524	2,694,895	33	1,893.0
2007	35,145	7,280,197	2,436,574	29	1,806.6
2008	36,245	9,255,953	2,971,923	37	1,824.8
2009	38,669	9,323,551	2,858,848	34	1,959.9
2010	40,883	9,658,261	3,498,040	39	2,069.6
2011	41,240	12,196,566	4,186,007	46	2,095.0
2012	40,147	15,773,140	4,446,004	49	2,037.4
2013	36,535	16,441,660	4,492,127	55	1,880.0
2014	34,489	15,954,254	4,455,081	52	1,786.5
2015	39,809	15,536,116	4,386,172	48	2,072.7
2016	40,401	14,075,310	3,783,829	39	2,131.3
2017	45,397	15,371,957	3,908,254	35	2,411.0
2018	49,277	15,716,877	4,238,775	34	2,637.7
2019	51,235	16,705,488	3,921,051	31	2,774.6
2020	50,242	16,718,952	3,823,329	31	2,730.2

County: county value. Kansas: state value. County Rank: highest county value ranked #1. (\$000): thousands of dollars. Nonmetro Kansas: Kansas total less Metropolitan Areas as defined by the Office of Management and Budget (OMB; released 3/6/2020). Per 1000: For nonmoney amounts, Per 1000=(county value / county population for the same year as the data) x 1000. \$ Per capita=(county value / county population for the same year as the data). Value= . indicates missing or suppressed data or value not calculated.

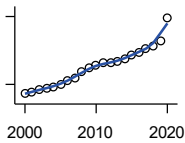
Income

**SOURCES OF PERSONAL INCOME:
DIVIDENDS,INTEREST,RENT(\$000)**



U.S. Bureau of Economic Analysis,
Regional Economic Information System
(REIS)

Year	County	State of Kansas	Non Metro Kansas	County Rank	Per 1000 or \$ Per Capita
2000	100,148	15,916,201	4,736,921	24	5,177.2
2001	107,687	15,770,830	4,699,417	23	5,626.9
2002	101,273	15,111,563	4,316,887	23	5,296.4
2003	103,699	15,370,764	4,360,311	23	5,390.3
2004	93,127	15,820,469	4,251,925	23	4,853.1
2005	99,385	17,147,069	4,485,387	23	5,153.5
2006	112,238	20,117,848	4,945,184	23	5,776.8
2007	126,091	22,269,186	5,526,219	23	6,481.5
2008	134,871	24,972,485	6,180,979	24	6,790.4
2009	122,124	21,453,879	5,308,474	24	6,189.8
2010	130,322	20,861,351	5,414,285	24	6,597.2
2011	133,375	23,387,567	5,781,075	24	6,775.5
2012	137,076	25,689,368	6,389,505	24	6,956.4
2013	126,568	24,832,212	5,984,811	25	6,513.0
2014	135,313	27,412,684	6,403,356	25	7,009.2
2015	141,062	27,244,414	6,423,685	25	7,344.7
2016	135,077	27,293,441	6,389,161	26	7,125.8
2017	145,219	28,385,472	6,700,156	26	7,712.5
2018	144,570	29,953,419	6,772,504	26	7,738.5
2019	145,610	30,820,276	6,957,987	27	7,885.3
2020	143,076	30,283,520	6,844,745	27	7,775.0



**SOURCES OF PERSONAL INCOME:
TRANSFER PAYMENTS (\$000)**

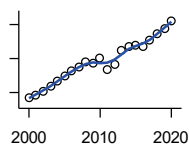
U.S. Bureau of Economic Analysis,
Regional Economic Information System
(REIS)

Year	County	State of Kansas	Non Metro Kansas	County Rank	Per 1000 or \$ Per Capita
2000	78,962	9,650,835	4,036,781	28	4,082.0
2001	84,136	10,549,124	4,355,457	28	4,396.3
2002	87,406	11,208,997	4,553,978	28	4,571.2
2003	92,640	11,709,049	4,702,911	28	4,815.5
2004	94,176	12,040,452	4,802,536	28	4,907.8
2005	99,954	12,696,735	5,059,314	28	5,183.0
2006	109,018	13,642,787	5,455,207	28	5,611.1
2007	114,334	14,686,821	5,775,024	28	5,877.1
2008	126,999	16,552,460	6,322,722	27	6,394.1
2009	136,390	18,025,603	6,790,962	28	6,912.8
2010	141,920	19,189,749	7,089,258	28	7,184.4
2011	148,008	19,625,770	7,255,825	28	7,518.8
2012	147,018	19,354,458	7,148,177	28	7,460.9
2013	149,544	19,639,358	7,185,636	27	7,695.4
2014	157,600	20,380,970	7,399,809	27	8,163.7
2015	165,517	21,116,856	7,623,577	27	8,618.0
2016	171,587	21,884,629	7,886,000	27	9,051.9
2017	178,473	22,559,744	8,062,517	27	9,478.6
2018	185,791	23,628,033	8,393,617	27	9,944.9
2019	195,777	25,050,174	8,845,371	27	10,602.0
2020	248,348	32,319,421	11,074,190	27	13,495.7

County: county value. Kansas: state value. County Rank: highest county value ranked #1. (\$000): thousands of dollars. Nonmetro Kansas: Kansas total less Metropolitan Areas as defined by the Office of Management and Budget (OMB; released 3/6/2020). Per 1000: For nonmoney amounts, Per 1000=(county value / county population for the same year as the data) x 1000. \$ Per capita=(county value / county population for the same year as the data). Value= . indicates missing or suppressed data or value not calculated.

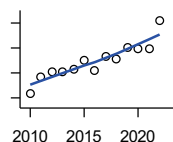
Income

**SOURCES OF PERSONAL INCOME:
LESS SOCIAL INSURANCE (\$000)**



U.S. Bureau of Economic Analysis,
Regional Economic Information System
(REIS)

Year	County	State of Kansas	Non Metro Kansas	County Rank	Per 1000 or \$ Per Capita
2000	28,584	6,655,813	1,663,044	30	1,477.7
2001	29,319	6,869,934	1,740,915	31	1,532.0
2002	30,357	7,008,361	1,778,636	29	1,587.6
2003	31,785	7,172,781	1,821,858	29	1,652.2
2004	33,235	7,556,560	1,904,014	29	1,732.0
2005	34,836	7,911,241	1,986,907	30	1,806.4
2006	36,363	8,406,937	2,090,313	31	1,871.6
2007	37,426	8,806,941	2,180,587	30	1,923.8
2008	39,104	9,207,010	2,299,399	29	1,968.8
2009	38,681	9,002,859	2,248,703	28	1,960.5
2010	40,143	9,235,760	2,321,191	27	2,032.1
2011	36,880	8,515,986	2,139,991	28	1,873.5
2012	38,172	8,816,128	2,195,919	28	1,937.2
2013	42,485	10,225,399	2,540,439	29	2,186.2
2014	43,410	10,609,601	2,635,009	29	2,248.6
2015	44,043	11,028,204	2,663,038	30	2,293.2
2016	43,420	10,915,915	2,604,579	30	2,290.6
2017	45,232	11,224,218	2,669,954	29	2,402.3
2018	47,371	11,749,229	2,797,106	30	2,535.6
2019	48,709	12,245,451	2,889,336	29	2,637.8
2020	51,093	12,715,152	3,027,656	29	2,776.5



HUD MEDIAN FAMILY INCOME

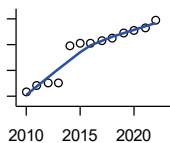
U.S. Department of Housing and Urban
Development (HUD)

Year	County	State of Kansas	Non Metro Kansas	County Rank	Per 1000 or \$ Per Capita
2010	55,900	63,100	.	35	.
2011	59,300	64,300	.	27	.
2012	60,100	65,200	.	27	.
2013	60,300	64,800	.	39	.
2014	60,700	64,400	.	36	.
2015	62,600	66,300	.	31	.
2016	60,400	66,700	.	40	.
2017	63,400	68,500	.	36	.
2018	62,700	73,100	.	55	.
2019	65,100	75,200	.	50	.
2020	64,900	76,500	.	59	.
2021	64,800	77,400	.	61	.
2022	70,500	87,800	.	62	.

County: county value. Kansas: state value. County Rank: highest county value ranked #1. (\$000): thousands of dollars. Nonmetro Kansas: Kansas total less Metropolitan Areas as defined by the Office of Management and Budget (OMB; released 3/6/2020). Per 1000: For nonmoney amounts, Per 1000=(county value / county population for the same year as the data) x 1000. \$ Per capita=(county value / county population for the same year as the data). Value= . indicates missing or suppressed data or value not calculated.

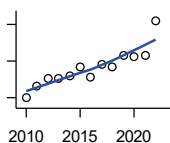
Income

HUD 30% LOW-TO-MEDIUM INCOME (LMI) LIMIT - 4 PERSONS



U.S. Department of Housing and Urban Development (HUD)

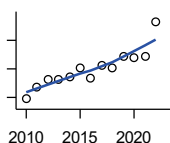
Year	County	State of Kansas	Non Metro Kansas	County Rank	Per 1000 or \$ Per Capita
2010	16,750	.	.	35	.
2011	17,600	.	.	31	.
2012	18,050	.	.	26	.
2013	18,100	.	.	35	.
2014	23,850	.	.	105	.
2015	24,250	.	.	105	.
2016	24,300	.	.	105	.
2017	24,600	.	.	105	.
2018	25,100	21,950	.	105	.
2019	25,750	22,550	.	105	.
2020	26,200	22,950	.	105	.
2021	26,500	23,200	.	105	.
2022	27,750	25,950	.	105	.



HUD 50% LOW-TO-MEDIUM INCOME (LMI) LIMIT - 4 PERSONS

U.S. Department of Housing and Urban Development (HUD)

Year	County	State of Kansas	Non Metro Kansas	County Rank	Per 1000 or \$ Per Capita
2010	27,950	.	.	35	.
2011	29,300	.	.	31	.
2012	30,050	.	.	26	.
2013	30,150	.	.	35	.
2014	30,350	.	.	30	.
2015	31,300	.	.	32	.
2016	30,200	.	.	39	.
2017	31,700	.	.	35	.
2018	31,350	36,550	.	55	.
2019	32,550	37,600	.	50	.
2020	32,450	38,250	.	59	.
2021	32,550	38,700	.	105	.
2022	36,400	43,300	.	105	.



HUD 80% LOW-TO-MEDIUM INCOME (LMI) LIMIT - 4 PERSONS

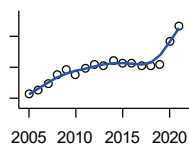
U.S. Department of Housing and Urban Development (HUD)

Year	County	State of Kansas	Non Metro Kansas	County Rank	Per 1000 or \$ Per Capita
2010	44,700	.	.	35	.
2011	46,900	.	.	31	.
2012	48,100	.	.	26	.
2013	48,250	.	.	35	.
2014	48,550	.	.	30	.
2015	50,100	.	.	32	.
2016	48,300	.	.	39	.
2017	50,700	.	.	35	.
2018	50,150	58,500	.	55	.
2019	52,100	60,150	.	50	.
2020	51,900	61,200	.	59	.
2021	52,100	61,900	.	105	.
2022	58,250	69,250	.	105	.

County: county value. Kansas: state value. County Rank: highest county value ranked #1. (\$000): thousands of dollars. Nonmetro Kansas: Kansas total less Metropolitan Areas as defined by the Office of Management and Budget (OMB; released 3/6/2020). Per 1000: For nonmoney amounts, Per 1000=(county value / county population for the same year as the data) x 1000. \$ Per capita=(county value / county population for the same year as the data). Value= . indicates missing or suppressed data or value not calculated.

Banking

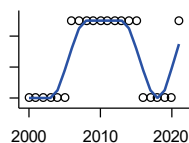
BANK DEPOSITS (1984-2004 in thousands; 2005- in millions)



Federal Deposit Insurance Corporation, Data Book, Operating Banks and Branches

Year	County	State of Kansas	Non Metro Kansas	County Rank	Per 1000 or \$ Per Capita
2005	316	48,304	17,000	28	16.4
2006	328	50,668	17,586	28	16.9
2007	345	54,057	18,517	29	17.7
2008	375	57,869	19,628	28	18.9
2009	391	57,763	20,031	27	19.8
2010	378	60,031	20,678	28	19.1
2011	397	61,094	21,347	27	20.2
2012	408	62,910	22,481	28	20.7
2013	405	64,547	22,795	29	20.8
2014	420	66,538	23,338	28	21.8
2015	413	68,160	23,367	29	21.5
2016	414	70,381	23,420	30	21.8
2017	406	73,329	23,928	30	21.6
2018	405	74,623	24,100	31	21.7
2019	409	76,436	24,488	30	22.1
2020	485	88,563	27,547	30	26.4
2021	535	97,055	30,122	30	29.0

NUMBER OF BANKS



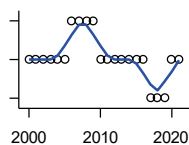
Federal Deposit Insurance Corporation, Data Book, Operating Banks and Branches

Year	County	State of Kansas	Non Metro Kansas	County Rank	Per 1000 or \$ Per Capita
2000	9	410	145	27	.
2001	9	410	136	28	.
2002	9	404	129	26	.
2003	9	397	121	26	.
2004	9	394	112	26	.
2005	9	388	101	28	.
2006	10	385	94	22	.
2007	10	382	91	22	.
2008	10	378	82	20	.
2009	10	374	79	20	.
2010	10	367	70	20	.
2011	10	359	61	20	.
2012	10	348	57	18	.
2013	10	332	45	17	.
2014	10	329	41	17	.
2015	10	320	31	16	.
2016	9	314	24	23	.
2017	9	301	13	23	.
2018	9	289	7	22	.
2019	9	279	3	23	.
2020	9	271	-1	23	.
2021	10	270	-6	18	.

County: county value. Kansas: state value. County Rank: highest county value ranked #1. (\$000): thousands of dollars. Nonmetro Kansas: Kansas total less Metropolitan Areas as defined by the Office of Management and Budget (OMB; released 3/6/2020). Per 1000: For nonmoney amounts, Per 1000=(county value / county population for the same year as the data) x 1000. \$ Per capita=(county value / county population for the same year as the data). Value= . indicates missing or suppressed data or value not calculated.

Banking

NUMBER OF BANKING OFFICES

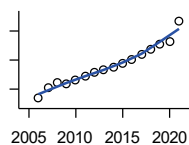


Federal Deposit Insurance Corporation, Data Book, Operating Banks and Branches

Year	County	State of Kansas	Non Metro Kansas	County Rank	Per 1000 or \$ Per Capita
2000	14	1,398	703	27	.
2001	14	1,424	708	27	.
2002	14	1,447	704	26	.
2003	14	1,461	708	27	.
2004	14	1,485	708	27	.
2005	14	1,505	711	28	.
2006	15	1,518	711	25	.
2007	15	1,543	717	25	.
2008	15	1,556	717	27	.
2009	15	1,569	716	27	.
2010	14	1,561	710	28	.
2011	14	1,559	707	28	.
2012	14	1,533	702	27	.
2013	14	1,518	696	27	.
2014	14	1,491	685	28	.
2015	14	1,472	675	27	.
2016	14	1,465	668	27	.
2017	13	1,452	666	30	.
2018	13	1,439	660	30	.
2019	13	1,439	663	29	.
2020	14	1,416	653	25	.
2021	14	1,392	641	24	.

Government

TANGIBLE ASSESSED VALUATION (KDoR, million\$; 2006-)



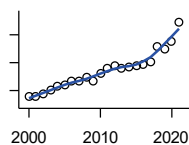
Kansas Department of Revenue, Division of Property Valuation, Statistical Report of Property Assessment and Taxation

Year	County	State of Kansas	Non Metro Kansas	County Rank	Per 1000 or \$ Per Capita
2006	147.2	28,964.3	10,316.9	34	7.6
2007	161.5	30,086.9	10,335.9	34	8.3
2008	169.0	31,000.3	10,856.9	33	8.5
2009	167.2	30,312.3	10,555.6	33	8.5
2010	172.9	29,450.2	10,158.7	32	8.8
2011	177.4	29,963.6	10,572.3	32	9.0
2012	183.7	30,382.9	10,876.2	31	9.3
2013	186.1	30,850.2	11,044.4	31	9.6
2014	189.4	31,783.0	11,388.9	31	9.8
2015	196.0	32,335.7	11,037.8	29	10.2
2016	201.1	33,156.3	10,889.6	29	10.6
2017	207.2	34,754.5	11,439.0	29	11.0
2018	215.2	36,566.1	11,907.1	29	11.5
2019	222.5	38,255.2	12,336.7	29	12.0
2020	225.4	39,333.9	12,219.3	29	12.3
2021	253.7	40,812.0	12,601.5	27	13.7

County: county value. Kansas: state value. County Rank: highest county value ranked #1. (\$000): thousands of dollars. Nonmetro Kansas: Kansas total less Metropolitan Areas as defined by the Office of Management and Budget (OMB; released 3/6/2020). Per 1000: For nonmoney amounts, Per 1000=(county value / county population for the same year as the data) x 1000. \$ Per capita=(county value / county population for the same year as the data). Value= . indicates missing or suppressed data or value not calculated.

Government

SALES TAX COLLECTIONS (\$)

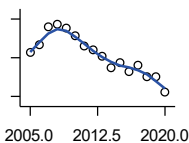


Kansas Department of Revenue. Use tax collections included beginning in calendar year 2018.

Year	County	State of Kansas	Non Metro Kansas	County Rank	Per 1000 or \$ Per Capita
2000	7,094,489	1,475,831,808	432,761,608	28	366,754.0
2001	7,088,609	1,481,026,688	426,316,284	28	370,394.5
2002	7,563,266	1,561,316,864	443,986,950	28	395,547.6
2003	8,037,113	1,626,782,976	461,658,700	28	417,772.8
2004	8,573,981	1,691,899,008	480,309,725	27	446,817.5
2005	8,799,488	1,744,980,352	497,494,867	28	456,286.6
2006	9,272,216	1,851,694,720	532,233,047	28	477,235.9
2007	9,401,401	1,917,546,752	559,319,583	28	483,263.1
2008	9,877,308	1,990,655,744	589,725,773	28	497,296.7
2009	9,341,877	1,866,223,078	548,627,132	28	473,485.9
2010	10,375,967	2,075,193,413	617,409,982	28	525,259.0
2011	11,237,662	2,347,193,367	702,671,534	29	570,874.4
2012	11,551,999	2,456,292,294	740,196,106	29	586,247.1
2013	11,166,159	2,489,204,048	746,226,565	30	574,597.8
2014	11,435,555	2,539,886,774	760,474,019	30	592,362.3
2015	11,601,351	2,642,374,740	750,090,163	29	604,048.3
2016	11,833,824	2,732,611,350	749,030,133	29	624,278.5
2017	12,048,387	2,726,104,521	744,246,491	29	639,884.6
2018	14,306,629	3,277,299,125	893,564,480	30	765,797.5
2019	13,872,876	3,395,631,405	939,607,762	31	751,265.9
2020	15,132,361	3,489,306,791	984,218,931	30	822,321.5
2021	17,841,469	3,981,293,227	1,098,391,422	28	966,545.8

Crime

CRIME INDEX OFFENSES



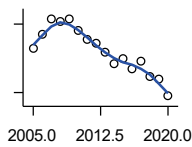
Kansas Bureau of Investigation, Note: Data are aggregated from reports by individual police departments and subject to be incomplete.

Year	County	State of Kansas	Non Metro Kansas	County Rank	Per 1000 or \$ Per Capita
2005	427	111,856	31,630	33	22.1
2006	464	110,032	.	28	23.9
2007	561	111,035	29,921	28	28.8
2008	572	93,996	27,342	27	28.8
2009	554	98,757	27,620	26	28.1
2010	512	98,354	26,909	29	25.9
2011	459	96,638	25,765	30	23.3
2012	443	98,914	26,963	32	22.5
2013	406	93,054	24,488	32	20.9
2014	351	86,323	23,341	31	18.2
2015	375	88,590	21,580	33	19.5
2016	330	90,589	21,565	33	17.4
2017	364	93,091	22,622	31	19.3
2018	305	92,062	20,325	33	16.3
2019	302	87,008	18,547	30	16.4
2020	225	87,346	17,762	32	12.2

County: county value. Kansas: state value. County Rank: highest county value ranked #1. (\$000): thousands of dollars. Nonmetro Kansas: Kansas total less Metropolitan Areas as defined by the Office of Management and Budget (OMB; released 3/6/2020). Per 1000: For nonmoney amounts, Per 1000=(county value / county population for the same year as the data) x 1000. \$ Per capita=(county value / county population for the same year as the data). Value= . indicates missing or suppressed data or value not calculated.

Crime

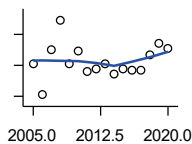
PROPERTY CRIMES



Kansas Bureau of Investigation, Note: Data are aggregated from reports by individual police departments and subject to be incomplete.

Year	County	State of Kansas	Non Metro Kansas	County Rank	Per 1000 or \$ Per Capita
2005	396	101,414	29,042	33	20.5
2006	453	99,110	.	27	23.3
2007	521	99,632	26,856	28	26.8
2008	513	83,964	24,367	27	25.8
2009	523	87,658	24,825	26	26.5
2010	473	87,926	24,133	28	23.9
2011	433	86,547	23,274	30	22.0
2012	415	88,707	24,220	31	21.1
2013	375	83,551	22,028	32	19.3
2014	327	76,794	20,858	31	16.9
2015	347	77,997	19,138	31	18.1
2016	303	79,549	19,207	32	16.0
2017	337	81,349	19,981	30	17.9
2018	268	79,695	17,769	33	14.3
2019	258	74,314	15,892	30	14.0
2020	184	73,450	15,100	32	10.0

VIOLENT CRIMES



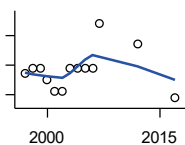
Kansas Bureau of Investigation, Note: Data are aggregated from reports by individual police departments and subject to be incomplete.

Year	County	State of Kansas	Non Metro Kansas	County Rank	Per 1000 or \$ Per Capita
2005	31	10,442	2,588	34	1.6
2006	11	10,922	.	57	0.6
2007	40	11,403	3,065	31	2.1
2008	59	10,032	2,975	25	3.0
2009	31	11,099	2,795	41	1.6
2010	39	10,428	2,776	31	2.0
2011	26	10,091	2,491	39	1.3
2012	28	10,207	2,743	38	1.4
2013	31	9,503	2,460	34	1.6
2014	24	9,529	2,483	36	1.2
2015	28	10,593	2,442	38	1.5
2016	27	11,040	2,358	34	1.4
2017	27	11,742	2,641	35	1.4
2018	37	12,367	2,556	32	2.0
2019	44	12,694	2,655	31	2.4
2020	41	13,896	2,662	32	2.2

County: county value. Kansas: state value. County Rank: highest county value ranked #1. (\$000): thousands of dollars. Nonmetro Kansas: Kansas total less Metropolitan Areas as defined by the Office of Management and Budget (OMB; released 3/6/2020). Per 1000: For nonmoney amounts, Per 1000=(county value / county population for the same year as the data) x 1000. \$ Per capita=(county value / county population for the same year as the data). Value= . indicates missing or suppressed data or value not calculated.

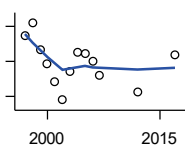
Agriculture

NUMBER OF FARMS



Kansas Agricultural Statistics, Kansas Farm Facts

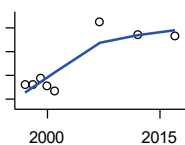
Year	County	State of Kansas	Non Metro Kansas	County Rank	Per 1000 or \$ Per Capita
1997	960	64,000	47,900	13	49.2
1998	970	65,000	48,850	14	50.2
1999	970	65,000	48,850	14	50.2
2000	950	64,000	48,030	16	49.1
2001	930	63,000	47,200	16	48.6
2002	930	63,000	47,200	16	48.6
2003	970	64,500	48,150	15	50.4
2004	970	64,500	48,150	15	50.5
2005	970	64,500	48,150	15	50.3
2006	970	64,000	47,650	15	49.9
2007	1,046	65,531	48,179	14	53.8
2012	1,011	61,773	45,655	12	51.3
2017	919	58,569	42,404	16	48.8



TOTAL ACRES HARVESTED

Kansas Agricultural Statistics, Kansas Farm Facts

Year	County	State of Kansas	Non Metro Kansas	County Rank	Per 1000 or \$ Per Capita
1997	324,890	22,846,000	19,430,580	13	16,633.7
1998	332,060	22,143,500	18,943,650	10	17,192.7
1999	316,760	21,708,900	18,581,750	13	16,392.9
2000	308,350	21,639,000	18,528,870	13	15,940.3
2001	298,510	21,847,900	18,689,750	12	15,597.8
2002	287,860	20,230,400	17,089,120	12	15,054.7
2003	304,280	21,827,700	18,661,920	12	15,816.6
2004	315,390	20,876,900	17,721,500	8	16,436.0
2005	314,240	21,936,500	18,807,930	12	16,294.5
2006	310,340	21,412,700	18,291,120	11	15,973.0
2007	302,208	19,886,655	17,164,743	10	15,534.5
2012	292,261	21,043,596	17,966,843	13	14,831.8
2017	313,594	21,837,465	18,543,057	11	16,654.8



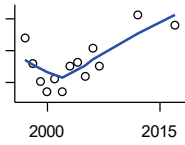
VALUE: LIVESTOCK AND POULTRY (\$000)

Kansas Agricultural Statistics, Kansas Farm Facts

Year	County	State of Kansas	Non Metro Kansas	County Rank	Per 1000 or \$ Per Capita
1997	32,568	2,806,445	2,500,305	24	1,667.4
1998	32,635	2,670,432	2,378,007	22	1,689.7
1999	37,329	2,849,061	2,554,528	20	1,931.8
2000	31,491	2,901,469	2,609,032	28	1,627.9
2001	26,962	2,693,274	2,437,187	26	1,408.8
2007	85,172	9,525,971	.	28	4,378.1
2012	74,658	11,476,571	10,883,216	35	3,788.8
2017	73,268	12,322,289	.	38	3,891.2

County: county value. Kansas: state value. County Rank: highest county value ranked #1. (\$000): thousands of dollars. Nonmetro Kansas: Kansas total less Metropolitan Areas as defined by the Office of Management and Budget (OMB; released 3/6/2020). Per 1000: For nonmoney amounts, Per 1000=(county value / county population for the same year as the data) x 1000. \$ Per capita=(county value / county population for the same year as the data). Value= . indicates missing or suppressed data or value not calculated.

Agriculture



VALUE:FIELD CROPS (\$000)
EXCLUDING GOVERNMENT
PROGRAM PAYMENTS

Kansas Agricultural Statistics, Kansas
Farm Facts

Year	County	State of Kansas	Non Metro Kansas	County Rank	Per 1000 or \$ Per Capita
1997	68,330	4,474,942	3,800,365	12	3,498.4
1998	51,635	3,594,319	3,124,409	19	2,673.4
1999	40,550	3,118,193	2,728,319	24	2,098.5
2000	33,872	2,915,660	2,540,052	30	1,751.0
2001	42,217	3,283,117	2,857,136	27	2,205.9
2002	34,296	3,011,855	2,560,580	32	1,793.6
2003	50,066	3,623,255	3,150,629	21	2,602.5
2004	52,878	3,445,688	2,896,603	17	2,755.6
2005	43,599	3,678,123	3,182,677	34	2,260.8
2006	61,827	4,308,716	3,684,132	20	3,182.2
2007	50,121	4,887,212	.	41	2,576.4
2012	82,393	6,983,993	6,044,551	29	4,181.3
2017	76,274	6,460,437	.	34	4,050.9

County: county value. Kansas: state value. County Rank: highest county value ranked #1. (\$000): thousands of dollars. Nonmetro Kansas: Kansas total less Metropolitan Areas as defined by the Office of Management and Budget (OMB; released 3/6/2020). Per 1000: For nonmoney amounts, Per 1000=(county value / county population for the same year as the data) x 1000. \$ Per capita=(county value / county population for the same year as the data). Value= . indicates missing or suppressed data or value not calculated.