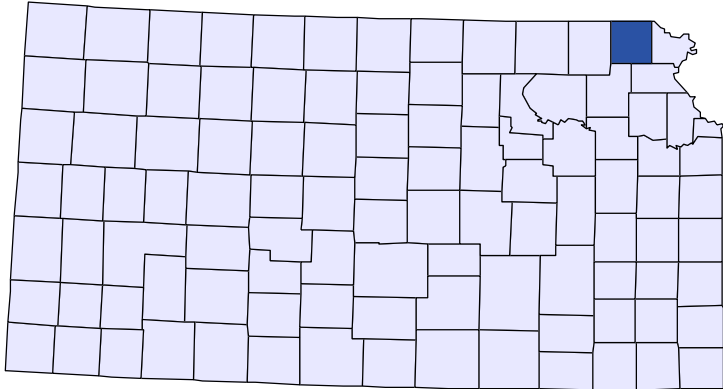




Kansas County Profiles

Brown County



The University
of Kansas

Institute for Policy
& Social Research

KU INSTITUTE FOR POLICY
& SOCIAL RESEARCH

The University of Kansas

1541 Lilac Lane, Rm. 607
Blake Hall
Lawrence, KS 66045-3129

Foreword

The Kansas County Profile Report is published by the Institute for Policy & Social Research (IPSR) at the University of Kansas with support from the KU University Center project.* Special thanks to Xanthippe Wedel, senior research data engineer, who compiles and updates the county profiles and Genna Hurd, associate researcher, who provides editorial review.

County reports can be generated for any county in Kansas by simply clicking on the county from the web site:

<https://ipsr.ku.edu/ksdata/kcced/profiles/>

The Kansas County Profile Report contains 12 categories of information: Population, Vital Statistics and Health, Housing, Education, Social Environment, Business, Employment, Income, Banking, Government, Crime, and Agriculture. For more information about Kansas, please refer to the Kansas Statistical Abstract, available online at:

<https://ipsr.ku.edu/ksdata/ksah/>

We are always looking for ways to improve the Kansas County Profile Report and we welcome your suggestions and comments. Please address any correspondence to the Institute for Policy & Social Research, The University of Kansas, 607 Blake Hall, 1541 Lilac Lane, Lawrence, Kansas 66045-3129, e-mail ipsr@ku.edu or call 785-864-3701.

**The KU University Center is a collaborative effort led by the Institute for Policy & Social Research at the University of Kansas. This project is supported by the Economic Development Administration, U.S. Department of Commerce, through its University Center Program.*

The mission of EDA is to lead the federal economic development agenda by promoting innovation and competitiveness, preparing American regions for growth and success in the worldwide economy.

Kansas County Profiles Table of Contents

Population

Total Population (Decennial Census)	1
Estimated Population (Current Population Reports)	2
Urban Population	2
Rural Population	3
Net Migration (Decade Ending...)	3
Median Age	3

Population (Age Groups)

Population Under 18 (Decennial Census)	3
Population Age 18 and Over (Decennial Census)	4
Population Age 65 and Over (Decennial Census)	4
Population Age 85 and Over (Decennial Census)	4

Vital Statistics and Health

Live Births	5
Deaths	5
Marriages	6
Divorces and Annulments	6
Physicians: M.D. Physicians	7
Physicians: D.O. Physicians	7
Dentists	8
Number of Hospitals	8
Number of Hospital Beds	9

Housing

Housing Units (Decennial Census)	9
Housing Units (Estimated)	10
Occupied Housing Units	10
Owner Occupied Housing Units	10
Renter Occupied Housing Units	11
Vacant Housing Units	11
Median Value (\$): Owner Occupied Housing Units	11
Median Contract Rent (\$)	12
Fair Market Rent: 2 Bedrooms	12

Education

Population Age 25 and Over	13
Percent of Population 25+ with High School or Higher Education	13
Percent of Population 25+ with Bachelors Degree or Higher Education	14
Public School Enrollment (FTE- School Year Beginning...)	14
Pupil/Teacher Ratio (School Year Beginning...)	15

Kansas County Profiles Table of Contents

Social Environment

Total Child Care Facilities	15
Preschools	16
Food Stamp Beneficiaries	16
Percent of Population Receiving Food Stamps	17
Estimated Number of People in Poverty	17
Estimated Percent of People in Poverty	18
Estimated Number of Related Children Age 5 to 17 in Families in Poverty	18
Estimated Percent of Related Children Age 5 to 17 in Families in Poverty	19
Estimated Number Under 18 in Poverty	19
Estimated Percent Under 18 in Poverty	20

Business

Establishments: Total	21
Establishments: 1-19 Employees	22
Establishments: 20-99 Employees	22
Establishments: 100-499 Employees	23
Establishments: 500 or More Employees	23
Establishments: Forestry, Fishing, Hunting, and Ag Support	24
Establishments: Mining	24
Establishments: Utilities	25
Establishments: Construction	25
Establishments: Manufacturing	26
Establishments: Wholesale Trade	26
Establishments: Retail Trade	27
Establishments: Transportation and Warehousing	27
Establishments: Information	28
Establishments: Finance and Insurance	28
Establishments: Real Estate, Rental, and Leasing	29
Establishments: Professional, Scientific, and Technical Services	29
Establishments: Management of Companies and Enterprises	30
Establishments: Admin, Support, Waste Management, and Remediation	30
Establishments: Educational Services	31
Establishments: Health Care and Social Assistance	31
Establishments: Arts, Entertainment, and Recreation	32
Establishments: Accommodation and Food Services	32
Establishments: Other Services	33

Kansas County Profiles Table of Contents

Business	
Total Annual Payroll (\$000)	34
Total Annual Payroll (\$000): Forestry, Fishing, Hunting, and Ag Support	35
Total Annual Payroll (\$000): Mining	35
Total Annual Payroll (\$000): Utilities	36
Total Annual Payroll (\$000): Construction	36
Total Annual Payroll (\$000): Manufacturing	37
Total Annual Payroll (\$000): Wholesale Trade	37
Total Annual Payroll (\$000): Retail Trade	38
Total Annual Payroll (\$000): Transportation and Warehousing	38
Total Annual Payroll (\$000): Information	39
Total Annual Payroll (\$000): Finance and Insurance	39
Total Annual Payroll (\$000): Real Estate, Rental, and Leasing	40
Total Annual Payroll (\$000): Professional, Scientific, and Technical Services	40
Total Annual Payroll (\$000): Management of Companies and Enterprises	41
Total Annual Payroll (\$000): Admin, Support, Waste Management, and Remediation	41
Total Annual Payroll (\$000): Educational Services	42
Total Annual Payroll (\$000): Health Care and Social Assistance	42
Total Annual Payroll (\$000): Arts, Entertainment, and Recreation	43
Total Annual Payroll (\$000): Accommodation and Food Services	43
Total Annual Payroll (\$000): Other Services	44
Nominal Taxable Retail Sales (Million\$)	44
Retail Pull Factor	45
Employment	
Civilian Labor Force (BLS - Place of Residence)	46
Employed (BLS - Place of Residence)	47
Unemployed (BLS - Place of Residence)	48
Unemployment Rate (BLS - Place of Residence)	49
BEA Employment: Total (Place of Work)	49
BEA Employment: Farm	50
BEA Employment: Non-Farm	50
Average Wage per Job (\$)	51
BEA Employment: Forestry, Fishing, Hunting, and Ag Support	51
BEA Employment: Mining	52
BEA Employment: Utilities	52
BEA Employment: Construction	53
BEA Employment: Manufacturing	53
BEA Employment: Wholesale Trade	54
BEA Employment: Retail Trade	54
BEA Employment: Transportation and Warehousing	55
BEA Employment: Information	55
BEA Employment: Finance and Insurance	56
BEA Employment: Real Estate, Rental, and Leasing	56
BEA Employment: Professional and Technical Services	57
BEA Employment: Management of Companies and Enterprises	57
BEA Employment: Administrative and Waste Services	58
BEA Employment: Educational Services	58
BEA Employment: Health Care and Social Assistance	59
BEA Employment: Arts, Entertainment, and Recreation	59
BEA Employment: Government and Government Enterprises	60
BEA Employment: Accommodation and Food Services	60
BEA Employment: Other Services, Except Public Administration	61

Kansas County Profiles Table of Contents

Income

BEA Per Capita Personal Income (\$)	61
Sources of Personal Income: Total Personal Income (\$000)	62
Sources of Personal Income: Wages And Salaries (\$000)	62
Sources of Personal Income: Proprietors-Farm (\$000)	63
Sources of Personal Income: Proprietors-Nonfarm (\$000)	63
Sources of Personal Income: Dividends, Interest, Rent (\$000)	64
Sources of Personal Income: Transfer Payments (\$000)	64
Sources of Personal Income: Less Social Insurance (\$000)	65
HUD Median Family Income	65
HUD 30% Low-To-Medium Income (LMI) Limit - 4 Persons	66
HUD 50% Low-To-Medium Income (LMI) Limit - 4 Persons	66
HUD 80% Low-To-Medium Income (LMI) Limit - 4 Persons	66

Banking

Bank Deposits (\$000)	67
Number of Banks	67
Number of Banking Offices	68

Government

Tangible Assessed Valuation (million\$)	68
Sales Tax Collections	69

Crime

Crime Index Offenses	69
Property Crimes	70
Violent Crimes	70

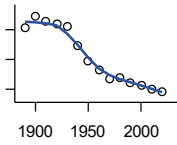
Agriculture

Number of Farms	71
Total Acres Harvested	71
Value: Livestock and Poultry (\$000)	71
Value: Field Crops (\$000) Excluding Government Program Payments	72

Population

DECENNIAL CENSUS:TOTAL POPULATION

U.S. Census Bureau: Decennial Census

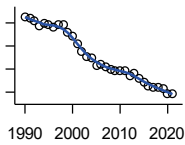


Year	County	State of Kansas	Non Metro Kansas	County Rank	Per 1000 or \$ Per Capita
1890	20,319	1,427,096	968,413	23	.
1900	22,369	1,470,495	981,206	19	.
1910	21,314	1,690,949	1,138,294	23	.
1920	20,949	1,769,257	1,153,525	26	.
1930	20,553	1,880,999	1,180,056	29	.
1940	17,395	1,801,028	1,097,216	32	.
1950	14,651	1,905,299	1,046,823	37	.
1960	13,229	2,178,611	1,021,510	37	.
1970	11,685	2,246,578	958,104	41	.
1980	11,955	2,363,679	980,085	40	.
1990	11,128	2,477,574	939,416	39	.
2000	10,724	2,688,418	959,507	40	.
2010	9,984	2,853,118	929,981	41	.
2020	9,508	2,937,880	892,006	41	.

County: county value. Kansas: state value. County Rank: highest county value ranked #1. (\$000): thousands of dollars. Nonmetro Kansas: Kansas total less Metropolitan Areas as defined by the Office of Management and Budget (OMB; released 3/6/2020). Per 1000: For nonmoney amounts, Per 1000=(county value / county population for the same year as the data) x 1000. \$ Per capita=(county value / county population for the same year as the data). Value= . indicates missing or suppressed data or value not calculated.

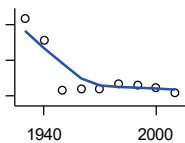
Population

ESTIMATED POPULATION



U.S. Census Bureau

Year	County	State of Kansas	Non Metro Kansas	County Rank	Per 1000 or \$ Per Capita
1990	11,132	2,481,349	938,607	39	.
1991	11,110	2,498,722	938,965	39	.
1992	11,044	2,532,394	942,759	39	.
1993	10,933	2,556,547	947,515	39	.
1994	10,980	2,580,513	952,178	39	.
1995	10,971	2,601,007	957,771	39	.
1996	10,901	2,614,554	959,455	39	.
1997	10,970	2,635,292	960,225	39	.
1998	10,950	2,660,598	960,569	39	.
1999	10,802	2,678,338	960,704	39	.
2000	10,709	2,693,681	959,230	40	.
2001	10,555	2,702,162	952,607	40	.
2002	10,373	2,713,535	945,985	41	.
2003	10,271	2,723,004	941,474	41	.
2004	10,253	2,734,373	937,623	41	.
2005	10,087	2,745,299	932,852	41	.
2006	10,111	2,762,931	928,809	41	.
2007	10,036	2,783,785	927,643	41	.
2008	9,988	2,808,076	926,248	41	.
2009	9,972	2,832,704	926,755	41	.
2010	9,968	2,858,190	930,028	41	.
2011	9,972	2,869,225	927,675	41	.
2012	9,866	2,885,257	925,152	41	.
2013	9,912	2,893,212	922,383	41	.
2014	9,785	2,900,475	917,854	41	.
2015	9,708	2,909,011	912,199	41	.
2016	9,641	2,910,844	905,099	41	.
2017	9,609	2,908,718	897,981	41	.
2018	9,610	2,911,359	892,656	41	.
2019	9,564	2,913,314	887,455	41	.
2020	9,473	2,935,880	889,750	41	.
2021	9,455	2,934,582	886,438	41	.



URBAN POPULATION

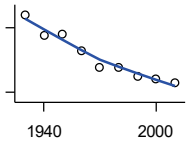
U.S. Census Bureau: Decennial Census

Year	County	State of Kansas	Non Metro Kansas	County Rank	Per 1000 or \$ Per Capita
1930	7,351	729,834	336,666	28	.
1940	6,110	753,941	349,228	34	.
1950	3,294	993,220	398,923	45	.
1960	3,391	1,328,741	457,447	47	.
1970	3,365	1,484,870	450,543	49	.
1980	3,702	1,575,899	474,769	45	.
1990	3,603	1,712,564	464,205	46	.
2000	3,492	1,920,081	488,011	47	.
2010	3,151	2,116,961	485,780	48	.

County: county value. Kansas: state value. County Rank: highest county value ranked #1. (\$000): thousands of dollars. Nonmetro Kansas: Kansas total less Metropolitan Areas as defined by the Office of Management and Budget (OMB; released 3/6/2020). Per 1000: For nonmoney amounts, Per 1000=(county value / county population for the same year as the data) x 1000. \$ Per capita=(county value / county population for the same year as the data). Value= . indicates missing or suppressed data or value not calculated.

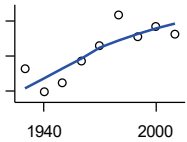
Population

RURAL POPULATION



U.S. Census Bureau

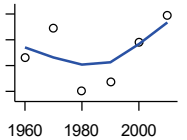
Year	County	State of Kansas	Non Metro Kansas	County Rank	Per 1000 or \$ Per Capita
1930	13,202	1,151,165	843,390	31	.
1940	11,285	1,047,087	747,988	34	.
1950	11,357	912,079	647,900	24	.
1960	9,838	849,870	564,063	29	.
1970	8,320	761,708	509,972	35	.
1980	8,253	787,780	505,873	34	.
1990	7,525	765,010	475,211	35	.
2000	7,232	768,337	471,900	38	.
2010	6,833	736,157	444,201	39	.



NET MIGRATION: DECADE ENDING...

calculated by the Institute for Policy and Social Research, The University of Kansas

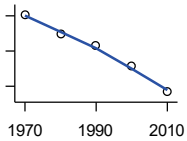
Year	County	State of Kansas	Non Metro Kansas	County Rank	Per 1000 or \$ Per Capita
1930	-2,749	-66,132	-101,869	93	-133.8
1940	-4,070	-192,649	-166,022	97	-234.0
1950	-3,533	-84,329	-158,379	91	-241.1
1960	-2,259	-38,999	-146,640	78	-170.8
1970	-1,378	-119,662	-105,116	76	-117.9
1980	351	-21,983	-6,184	29	29.4
1990	-899	-61,835	-79,274	68	-80.8
2000	-300	68,960	4,247	86	-28.0
2010	-753	5,578	-50,648	88	-75.4



MEDIAN AGE

U.S. Census Bureau: Decennial Census

Year	County	State of Kansas	Non Metro Kansas	County Rank	Per 1000 or \$ Per Capita
1960	38.6	26.9	.	11	.
1970	40.9	28.7	.	20	.
1980	36.0	30.1	.	36	.
1990	36.7	32.9	.	54	.
2000	39.8	35.2	.	49	.
2010	41.9	36.0	.	56	.



POPULATION UNDER 18 (DECENNIAL CENSUS)

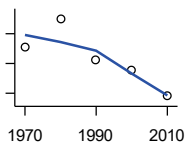
U.S. Census Bureau: Decennial Census

Year	County	State of Kansas	Non Metro Kansas	County Rank	Per 1000 or \$ Per Capita
1970	3,413	746,354	306,227	42	.
1980	3,192	649,035	263,919	39	.
1990	3,059	661,614	250,107	38	.
2000	2,828	712,993	250,757	39	.
2010	2,534	726,939	229,213	39	.

County: county value. Kansas: state value. County Rank: highest county value ranked #1. (\$000): thousands of dollars. Nonmetro Kansas: Kansas total less Metropolitan Areas as defined by the Office of Management and Budget (OMB; released 3/6/2020). Per 1000: For nonmoney amounts, Per 1000=(county value / county population for the same year as the data) x 1000. \$ Per capita=(county value / county population for the same year as the data). Value= . indicates missing or suppressed data or value not calculated.

Population

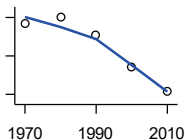
**POPULATION AGE 18 AND OVER
(DECENNIAL CENSUS)**



U.S. Census Bureau: Decennial Census

Year	County	State of Kansas	Non Metro Kansas	County Rank	Per 1000 or \$ Per Capita
1970	8,272	1,500,224	654,288	38	.
1980	8,750	1,714,282	716,684	41	.
1990	8,069	1,815,960	689,309	40	.
2000	7,896	1,975,425	709,154	41	.
2010	7,450	2,126,179	700,768	42	.

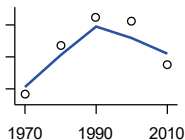
**POPULATION AGE 65 AND OVER
(DECENNIAL CENSUS)**



U.S. Census Bureau: Decennial Census

Year	County	State of Kansas	Non Metro Kansas	County Rank	Per 1000 or \$ Per Capita
1970	2,539	266,201	149,049	32	.
1980	2,598	306,263	164,932	32	.
1990	2,417	342,571	168,579	35	.
2000	2,089	356,229	161,769	39	.
2010	1,829	376,116	154,214	42	.

**POPULATION AGE 85 AND OVER
(DECENNIAL CENSUS)**



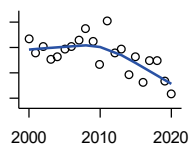
U.S. Census Bureau: Decennial Census

Year	County	State of Kansas	Non Metro Kansas	County Rank	Per 1000 or \$ Per Capita
1970	266	23,899	13,698	28	.
1980	343	33,455	18,804	28	.
1990	387	42,241	22,970	33	.
2000	380	51,770	26,644	35	.
2010	312	59,318	26,197	41	.

County: county value. Kansas: state value. County Rank: highest county value ranked #1. (\$000): thousands of dollars. Nonmetro Kansas: Kansas total less Metropolitan Areas as defined by the Office of Management and Budget (OMB; released 3/6/2020). Per 1000: For nonmoney amounts, Per 1000=(county value / county population for the same year as the data) x 1000. \$ Per capita=(county value / county population for the same year as the data). Value= . indicates missing or suppressed data or value not calculated.

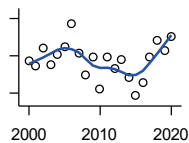
Vital Statistics and Health

BIRTHS (LIVE)



Kansas Department of Health and Environment

Year	County	State of Kansas	Non Metro Kansas	County Rank	Per 1000 or \$ Per Capita
2000	147	39,654	12,980	37	13.7
2001	136	38,832	12,527	40	12.9
2002	141	39,338	12,476	38	13.6
2003	131	39,353	12,342	40	12.8
2004	133	39,553	12,398	39	13.0
2005	139	39,701	12,382	37	13.8
2006	141	40,896	12,726	39	13.9
2007	146	41,951	12,990	37	14.5
2008	155	41,815	12,970	37	15.5
2009	145	41,388	12,949	38	14.5
2010	127	40,439	12,200	42	12.7
2011	161	39,628	12,098	36	16.1
2012	136	40,304	12,217	38	13.8
2013	139	38,805	11,877	38	14.0
2014	119	39,193	12,052	44	12.2
2015	133	39,126	11,836	40	13.7
2016	112	38,048	11,467	45	11.6
2017	130	36,464	10,968	38	13.5
2018	130	36,268	10,826	38	13.5
2019	113	35,395	10,506	40	11.8
2020	103	34,368	10,222	42	10.8



DEATHS

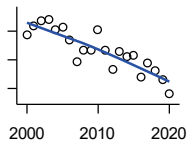
Kansas Department of Health and Environment

Year	County	State of Kansas	Non Metro Kansas	County Rank	Per 1000 or \$ Per Capita
2000	135	24,676	11,175	42	12.6
2001	129	24,590	10,807	47	12.2
2002	149	24,968	11,079	37	14.4
2003	131	24,417	10,615	41	12.8
2004	141	23,720	10,369	38	13.8
2005	150	24,632	10,599	36	14.9
2006	175	24,489	10,538	34	17.3
2007	143	24,413	10,601	40	14.2
2008	120	24,896	10,593	44	12.0
2009	139	23,997	9,938	37	13.9
2010	104	24,428	10,105	48	10.4
2011	139	25,114	10,520	36	13.9
2012	127	25,084	10,259	43	12.9
2013	136	25,347	10,249	36	13.7
2014	117	25,731	10,275	43	12.0
2015	97	26,611	10,539	50	10.0
2016	111	26,129	10,231	45	11.5
2017	139	26,725	10,452	38	14.5
2018	157	27,213	10,389	34	16.3
2019	145	27,312	10,569	37	15.2
2020	160	31,667	11,850	35	16.8

County: county value. Kansas: state value. County Rank: highest county value ranked #1. (\$000): thousands of dollars. Nonmetro Kansas: Kansas total less Metropolitan Areas as defined by the Office of Management and Budget (OMB; released 3/6/2020). Per 1000: For nonmoney amounts, Per 1000=(county value / county population for the same year as the data) x 1000. \$ Per capita=(county value / county population for the same year as the data). Value= . indicates missing or suppressed data or value not calculated.

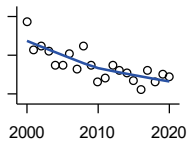
Vital Statistics and Health

MARRIAGES



Kansas Department of Health and Environment

Year	County	State of Kansas	Non Metro Kansas	County Rank	Per 1000 or \$ Per Capita
2000	77	20,426	7,333	40	7.2
2001	84	20,457	7,441	36	8.0
2002	87	19,783	6,794	35	8.4
2003	88	18,722	6,469	36	8.6
2004	81	19,174	6,756	38	7.9
2005	83	18,745	6,481	37	8.2
2006	74	18,836	6,433	40	7.3
2007	59	18,910	6,464	45	5.9
2008	67	18,717	6,283	40	6.7
2009	67	18,268	6,015	39	6.7
2010	81	18,150	5,925	36	8.1
2011	67	17,897	5,977	38	6.7
2012	53	18,154	5,752	48	5.4
2013	66	17,328	5,533	39	6.7
2014	62	17,655	5,535	38	6.3
2015	63	17,595	5,400	38	6.5
2016	48	17,948	5,340	46	5.0
2017	58	17,274	5,163	38	6.0
2018	52	16,362	4,999	43	5.4
2019	46	15,403	4,650	48	4.8
2020	36	14,038	4,066	49	3.8



DIVORCES AND ANNULMENTS

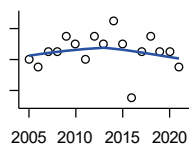
Kansas Department of Health and Environment

Year	County	State of Kansas	Non Metro Kansas	County Rank	Per 1000 or \$ Per Capita
2000	47	10,105	4,000	37	4.4
2001	33	9,885	3,818	51	3.1
2002	35	9,645	3,716	43	3.4
2003	32	8,644	3,464	45	3.1
2004	25	8,759	3,506	53	2.4
2005	25	8,476	3,311	55	2.5
2006	31	9,145	3,387	45	3.1
2007	23	9,347	3,402	56	2.3
2008	35	9,818	3,655	44	3.5
2009	25	10,333	3,463	56	2.5
2010	16	10,579	3,530	67	1.6
2011	18	10,445	3,347	62	1.8
2012	25	9,782	3,040	51	2.5
2013	22	9,085	2,973	51	2.2
2014	21	8,441	2,682	52	2.1
2015	17	8,036	2,704	57	1.8
2016	12	7,198	2,424	66	1.2
2017	22	6,494	2,315	45	2.3
2018	16	6,538	2,269	50	1.7
2019	20	6,398	2,357	44	2.1
2020	19	5,169	1,866	45	2.0

County: county value. Kansas: state value. County Rank: highest county value ranked #1. (\$000): thousands of dollars. Nonmetro Kansas: Kansas total less Metropolitan Areas as defined by the Office of Management and Budget (OMB; released 3/6/2020). Per 1000: For nonmoney amounts, Per 1000=(county value / county population for the same year as the data) x 1000. \$ Per capita=(county value / county population for the same year as the data). Value= . indicates missing or suppressed data or value not calculated.

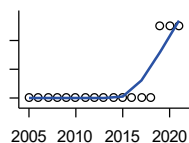
Vital Statistics and Health

PHYSICIANS: M.D. PHYSICIANS



Kansas Department of Health and Environment (1981-2005,2010-);Kansas Health Policy Authority (2006-2009)

Year	County	State of Kansas	Non Metro Kansas	County Rank	Per 1000 or \$ Per Capita
2005	12	4,241	912	32	1.2
2006	11	4,310	953	34	1.1
2007	13	5,309	1,046	34	1.3
2008	13	5,110	1,016	33	1.3
2009	15	5,249	996	30	1.5
2010	14	5,192	979	31	1.4
2011	12	5,243	983	33	1.2
2012	15	5,693	1,033	32	1.5
2013	14	6,106	1,071	34	1.4
2014	17	5,839	951	30	1.7
2015	14	5,703	855	30	1.4
2016	7	4,278	643	37	0.7
2017	13	6,332	1,047	31	1.4
2018	15	6,079	1,065	30	1.6
2019	13	6,435	1,036	31	1.4
2020	13	6,668	1,045	31	1.4
2021	11	6,745	1,042	35	1.2



PHYSICIANS: D.O. PHYSICIANS

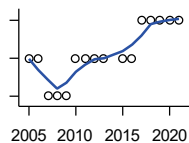
Kansas Department of Health and Environment (1981-2005,2010-);Kansas Health Policy Authority (2006-2009)

Year	County	State of Kansas	Non Metro Kansas	County Rank	Per 1000 or \$ Per Capita
2005	0	553	174	105	0.0
2006	0	508	171	105	0.0
2007	0	569	169	105	0.0
2008	0	558	166	105	0.0
2009	0	564	160	105	0.0
2010	0	583	169	105	0.0
2011	0	502	152	105	0.0
2012	0	718	200	105	0.0
2013	0	829	210	105	0.0
2014	0	817	189	105	0.0
2015	0	819	190	105	0.0
2016	0	632	136	105	0.0
2017	0	579	129	105	0.0
2018	0	871	164	105	0.0
2019	1	951	212	65	0.1
2020	1	1,018	204	66	0.1
2021	1	1,095	217	74	0.1

County: county value. Kansas: state value. County Rank: highest county value ranked #1. (\$000): thousands of dollars. Nonmetro Kansas: Kansas total less Metropolitan Areas as defined by the Office of Management and Budget (OMB; released 3/6/2020). Per 1000: For nonmoney amounts, Per 1000=(county value / county population for the same year as the data) x 1000. \$ Per capita=(county value / county population for the same year as the data). Value= . indicates missing or suppressed data or value not calculated.

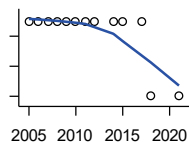
Vital Statistics and Health

DENTISTS



Kansas Department of Health and Environment (1981-2006,2010-); Kansas Health Policy Authority (2007-2009)

Year	County	State of Kansas	Non Metro Kansas	County Rank	Per 1000 or \$ Per Capita
2005	3	1,347	363	48	0.3
2006	3	1,381	361	48	0.3
2007	2	1,335	350	68	0.2
2008	2	1,392	353	67	0.2
2009	2	1,353	350	67	0.2
2010	3	1,401	365	53	0.3
2011	3	1,338	346	50	0.3
2012	3	1,434	392	53	0.3
2013	3	1,212	328	52	0.3
2015	3	1,240	327	50	0.3
2016	3	1,456	350	52	0.3
2017	4	1,467	350	40	0.4
2018	4	1,604	359	39	0.4
2019	4	1,646	355	38	0.4
2020	4	1,646	355	38	0.4
2021	4	1,688	362	39	0.4



NUMBER OF HOSPITALS

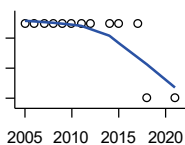
American Hospital Association, American Hospital Association Guide to the Health Care Field

Year	County	State of Kansas	Non Metro Kansas	County Rank	Per 1000 or \$ Per Capita
2005	2	158	105	31	.
2006	2	158	105	31	.
2007	2	159	104	32	.
2008	2	159	104	32	.
2009	2	158	105	32	.
2010	2	158	104	31	.
2011	2	158	103	31	.
2012	2	157	103	31	.
2014	2	156	.	31	.
2015	2	155	103	32	.
2017	2	157	102	30	.
2018	1	154	99	95	.
2021	1	151	.	95	.

County: county value. Kansas: state value. County Rank: highest county value ranked #1. (\$000): thousands of dollars. Nonmetro Kansas: Kansas total less Metropolitan Areas as defined by the Office of Management and Budget (OMB; released 3/6/2020). Per 1000: For nonmoney amounts, Per 1000=(county value / county population for the same year as the data) x 1000. \$ Per capita=(county value / county population for the same year as the data). Value= . indicates missing or suppressed data or value not calculated.

Vital Statistics and Health

NUMBER OF HOSPITAL BEDS

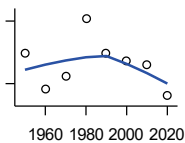


Kansas Department of Health and Environment

Year	County	State of Kansas	Non Metro Kansas	County Rank	Per 1000 or \$ Per Capita
2005	50	12,389	5,687	61	5.0
2006	50	11,992	5,514	59	4.9
2007	50	12,171	5,637	58	5.0
2008	50	12,332	5,700	59	5.0
2009	50	12,283	5,652	58	5.0
2010	50	12,218	5,521	58	5.0
2011	50	12,182	5,335	56	5.0
2012	50	12,002	5,355	56	5.1
2014	50	12,034	.	53	5.1
2015	50	11,926	5,330	52	5.2
2017	50	11,491	4,825	46	5.2
2018	25	11,448	4,583	82	2.6
2021	25	11,199	.	76	2.6

Housing

HOUSING UNITS (DECENNIAL)



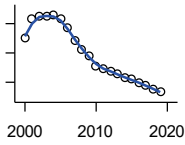
U.S. Census Bureau: Decennial Census

Year	County	State of Kansas	Non Metro Kansas	County Rank	Per 1000 or \$ Per Capita
1950	4,890	586,650	328,210	35	333.8
1960	4,549	672,899	329,380	36	343.9
1970	4,674	789,735	363,824	39	400.0
1980	5,224	955,207	416,877	40	437.0
1990	4,890	1,044,112	417,062	40	439.4
2000	4,815	1,131,395	422,218	41	449.0
2010	4,779	1,233,215	424,050	40	478.7
2020	4,482	1,275,689	413,120	43	471.4

County: county value. Kansas: state value. County Rank: highest county value ranked #1. (\$000): thousands of dollars. Nonmetro Kansas: Kansas total less Metropolitan Areas as defined by the Office of Management and Budget (OMB; released 3/6/2020). Per 1000: For nonmoney amounts, Per 1000=(county value / county population for the same year as the data) x 1000. \$ Per capita=(county value / county population for the same year as the data). Value= . indicates missing or suppressed data or value not calculated.

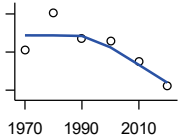
Housing

HOUSING UNITS (ESTIMATED)



U.S. Census Bureau

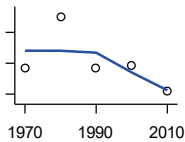
Year	County	State of Kansas	Non Metro Kansas	County Rank	Per 1000 or \$ Per Capita
2000	4,825	1,134,529	422,560	41	449.9
2001	4,858	1,146,858	423,876	40	460.3
2002	4,863	1,160,129	425,089	41	468.8
2003	4,862	1,171,620	425,936	41	473.4
2004	4,865	1,184,702	426,593	41	474.5
2005	4,858	1,195,791	426,964	41	481.6
2006	4,842	1,206,692	426,713	40	478.9
2007	4,822	1,217,608	426,090	40	480.5
2008	4,806	1,225,625	425,768	40	481.2
2009	4,794	1,230,552	424,776	40	480.7
2010	4,778	1,234,456	424,174	40	478.6
2011	4,773	1,238,052	424,549	40	478.6
2012	4,769	1,241,992	425,116	40	483.4
2013	4,764	1,246,675	425,699	40	480.6
2014	4,757	1,253,284	426,269	40	486.2
2015	4,755	1,258,999	426,844	40	489.8
2016	4,749	1,265,684	427,465	40	492.6
2017	4,744	1,273,536	427,746	40	493.7
2018	4,739	1,280,649	428,099	40	493.1
2019	4,733	1,288,401	428,495	40	494.9



OCCUPIED HOUSING UNITS

U.S. Census Bureau: Decennial Census

Year	County	State of Kansas	Non Metro Kansas	County Rank	Per 1000 or \$ Per Capita
1970	4,215	727,364	326,494	37	360.7
1980	4,612	872,239	371,693	40	385.8
1990	4,347	944,726	365,901	39	390.6
2000	4,318	1,037,891	375,313	39	402.6
2010	4,094	1,112,096	370,269	40	410.1
2020	3,841	1,151,360	356,330	41	404.0



OWNER OCCUPIED HOUSING UNITS

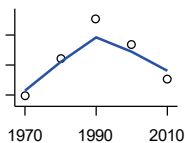
U.S. Census Bureau: Decennial Census

Year	County	State of Kansas	Non Metro Kansas	County Rank	Per 1000 or \$ Per Capita
1970	3,067	502,585	236,338	39	262.5
1980	3,401	612,433	277,096	42	284.5
1990	3,070	641,762	263,099	43	275.9
2000	3,083	718,703	271,350	44	287.5
2010	2,917	753,532	261,763	43	292.2

County: county value. Kansas: state value. County Rank: highest county value ranked #1. (\$000): thousands of dollars. Nonmetro Kansas: Kansas total less Metropolitan Areas as defined by the Office of Management and Budget (OMB; released 3/6/2020). Per 1000: For nonmoney amounts, Per 1000=(county value / county population for the same year as the data) x 1000. \$ Per capita=(county value / county population for the same year as the data). Value= . indicates missing or suppressed data or value not calculated.

Housing

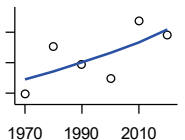
RENTER OCCUPIED HOUSING UNITS



U.S. Census Bureau: Decennial Census

Year	County	State of Kansas	Non Metro Kansas	County Rank	Per 1000 or \$ Per Capita
1970	1,148	224,779	90,156	34	98.2
1980	1,211	259,806	94,597	34	101.3
1990	1,277	302,964	102,802	34	114.8
2000	1,235	319,188	103,963	35	115.2
2010	1,177	358,564	108,506	35	117.9

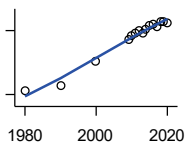
VACANT HOUSING UNITS



U.S. Census Bureau: Decennial Census

Year	County	State of Kansas	Non Metro Kansas	County Rank	Per 1000 or \$ Per Capita
1970	446	60,058	35,954	42	38.2
1980	604	77,912	41,584	36	50.5
1990	543	99,386	51,161	47	48.8
2000	497	93,309	46,904	51	46.3
2010	685	121,119	53,781	42	68.6
2020	641	124,329	56,790	47	67.4

MEDIAN VALUE (\$): OWNER OCCUPIED HOUSING UNITS



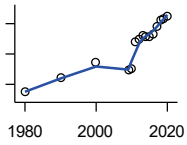
U.S. Census Bureau, Decennial Census (- 2000), (2009 -) American Community Survey five-year average ending in year shown.

Year	County	State of Kansas	Non Metro Kansas	County Rank	Per 1000 or \$ Per Capita
1980	23,600	37,800	.	80	.
1990	28,000	52,200	.	73	.
2000	50,800	83,500	.	58	.
2009	71,500	118,500	.	54	.
2010	74,800	122,600	.	56	.
2011	77,000	125,500	.	53	.
2012	80,400	127,400	.	48	.
2013	77,100	128,400	.	58	.
2014	81,600	129,400	.	56	.
2015	84,600	132,000	.	54	.
2016	86,000	135,300	.	53	.
2017	83,900	139,200	.	66	.
2018	88,700	145,400	.	61	.
2019	88,500	151,900	.	68	.
2020	87,000	157,600	.	67	.

County: county value. Kansas: state value. County Rank: highest county value ranked #1. (\$000): thousands of dollars. Nonmetro Kansas: Kansas total less Metropolitan Areas as defined by the Office of Management and Budget (OMB; released 3/6/2020). Per 1000: For nonmoney amounts, Per 1000=(county value / county population for the same year as the data) x 1000. \$ Per capita=(county value / county population for the same year as the data). Value= . indicates missing or suppressed data or value not calculated.

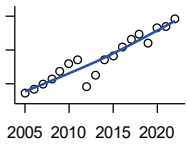
Housing

MEDIAN CONTRACT RENT (\$)



U.S. Census Bureau, Decennial Census (- 2000), (2009 -) American Community Survey five-year average ending in year shown.

Year	County	State of Kansas	Non Metro Kansas	County Rank	Per 1000 or \$ Per Capita
1980	148	219	.	80	.
1990	240	372	.	88	.
2000	342	498	.	75	.
2009	293	491	.	75	.
2010	301	507	.	75	.
2011	479	699	.	86	.
2012	495	715	.	83	.
2013	526	732	.	76	.
2014	513	748	.	86	.
2015	517	757	.	88	.
2016	532	775	.	85	.
2017	580	801	.	75	.
2018	625	831	.	63	.
2019	633	850	.	65	.
2020	647	863	.	63	.



FAIR MARKET RENT: 2 BEDROOMS

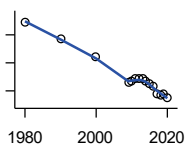
U.S. Department of Housing and Urban Development (HUD)

Year	County	State of Kansas	Non Metro Kansas	County Rank	Per 1000 or \$ Per Capita
2005	521	.	.	21	.
2006	532	.	.	23	.
2007	548	.	.	22	.
2008	563	628	.	23	.
2009	587	653	.	23	.
2010	611	678	.	22	.
2011	620	684	.	22	.
2012	540	660	.	105	.
2013	577	712	.	105	.
2014	622	746	.	105	.
2015	634	756	.	105	.
2016	658	781	.	105	.
2017	681	811	.	105	.
2018	697	815	.	105	.
2019	672	828	.	105	.
2020	714	855	.	105	.
2021	718	874	.	105	.
2022	742	879	.	105	.

County: county value. Kansas: state value. County Rank: highest county value ranked #1. (\$000): thousands of dollars. Nonmetro Kansas: Kansas total less Metropolitan Areas as defined by the Office of Management and Budget (OMB; released 3/6/2020). Per 1000: For nonmoney amounts, Per 1000=(county value / county population for the same year as the data) x 1000. \$ Per capita=(county value / county population for the same year as the data). Value= . indicates missing or suppressed data or value not calculated.

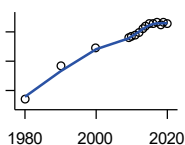
Education

POPULATION AGE 25+



U.S. Census Bureau, Decennial Census (- 2000), (2009 -) American Community Survey five-year average ending in year shown.

Year	County	State of Kansas	Non Metro Kansas	County Rank	Per 1000 or \$ Per Capita
1980	7,585	1,388,102	596,639	.	.
1990	7,347	1,565,936	608,745	.	.
2000	7,080	1,701,207	618,131	.	.
2009	6,722	1,775,427	600,188	.	.
2010	6,748	1,802,904	608,716	.	.
2011	6,768	1,822,400	610,386	.	.
2012	6,770	1,838,079	611,103	.	.
2013	6,771	1,850,010	610,374	.	.
2014	6,743	1,861,894	609,612	.	.
2015	6,694	1,869,698	606,967	.	.
2016	6,675	1,878,495	604,563	.	.
2017	6,564	1,886,741	601,076	.	.
2018	6,542	1,894,675	598,487	.	.
2019	6,548	1,902,279	595,501	.	.
2020	6,503	1,911,990	593,923	.	.



PERCENT HS GRADUATE OR HIGHER AGE 25+

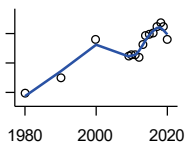
U.S. Census Bureau, Decennial Census (- 2000), (2009 -) American Community Survey five-year average ending in year shown.

Year	County	State of Kansas	Non Metro Kansas	County Rank	Per 1000 or \$ Per Capita
1980	66.9	73.3	.	74	.
1990	78.4	81.3	.	39	.
2000	84.6	86.0	.	56	.
2009	88.0	89.0	.	64	.
2010	88.3	89.2	.	60	.
2011	89.1	89.5	.	55	.
2012	89.9	89.7	.	47	.
2013	90.9	89.8	.	38	.
2014	91.9	90.0	.	29	.
2015	92.7	90.2	.	26	.
2016	92.9	90.3	.	26	.
2017	93.3	90.5	.	20	.
2018	92.6	90.7	.	35	.
2019	93.2	91.0	.	28	.
2020	92.8	91.4	.	44	.

County: county value. Kansas: state value. County Rank: highest county value ranked #1. (\$000): thousands of dollars. Nonmetro Kansas: Kansas total less Metropolitan Areas as defined by the Office of Management and Budget (OMB; released 3/6/2020). Per 1000: For nonmoney amounts, Per 1000=(county value / county population for the same year as the data) x 1000. \$ Per capita=(county value / county population for the same year as the data). Value= . indicates missing or suppressed data or value not calculated.

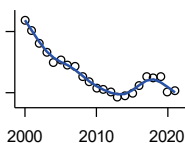
Education

PERCENT BACHELORS DEGREE OR HIGHER AGE 25+



U.S. Census Bureau, Decennial Census (- 2000), (2009 -) American Community Survey five-year average ending in year shown.

Year	County	State of Kansas	Non Metro Kansas	County Rank	Per 1000 or \$ Per Capita
1980	9.8	17.0	.	83	.
1990	12.5	21.1	.	72	.
2000	19.0	25.8	.	26	.
2009	16.2	28.8	.	80	.
2010	16.3	29.3	.	85	.
2011	16.3	29.7	.	87	.
2012	16.0	30.0	.	90	.
2013	18.2	30.3	.	71	.
2014	19.6	30.7	.	61	.
2015	19.8	31.0	.	64	.
2016	20.1	31.6	.	60	.
2017	21.2	32.3	.	52	.
2018	21.8	32.9	.	53	.
2019	21.2	33.4	.	60	.
2020	19.1	33.9	.	86	.



PUBLIC SCHOOL ENROLLMENT (FTE) SCHOOL YEAR BEGINNING...

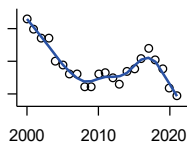
Kansas State Department of Education

Year	County	State of Kansas	Non Metro Kansas	County Rank	Per 1000 or \$ Per Capita
2000	1,754.3	448,150.8	166,722.5	44	163.6
2001	1,706.8	447,047.1	164,365.0	45	161.7
2002	1,643.0	444,860.3	161,555.4	45	158.4
2003	1,595.5	443,620.6	159,130.2	45	155.3
2004	1,549.4	441,957.2	156,566.3	45	151.1
2005	1,560.0	442,708.4	155,197.2	45	154.7
2006	1,532.5	444,878.7	153,842.3	46	151.6
2007	1,527.9	446,831.3	152,337.1	45	152.2
2008	1,477.3	447,730.0	150,572.7	45	147.9
2009	1,453.1	453,202.5	151,246.8	45	145.7
2010	1,424.2	455,405.0	151,023.8	46	142.6
2011	1,413.2	456,000.5	150,257.9	46	141.7
2012	1,405.1	458,496.4	150,463.0	46	142.4
2013	1,376.1	461,950.0	150,420.9	46	138.8
2014	1,385.2	464,395.4	150,499.4	46	141.6
2015	1,400.0	463,504.0	149,539.3	46	144.2
2016	1,437.2	459,920.3	147,293.5	45	149.1
2017	1,479.9	477,977.9	152,096.3	45	154.0
2018	1,474.4	476,481.7	150,456.8	45	153.4
2019	1,477.1	476,525.1	150,045.2	45	154.4
2020	1,401.2	462,088.0	146,369.6	46	147.4
2021	1,410.2	463,652.4	147,500.4	47	149.1

County: county value. Kansas: state value. County Rank: highest county value ranked #1. (\$000): thousands of dollars. Nonmetro Kansas: Kansas total less Metropolitan Areas as defined by the Office of Management and Budget (OMB; released 3/6/2020). Per 1000: For nonmoney amounts, Per 1000=(county value / county population for the same year as the data) x 1000. \$ Per capita=(county value / county population for the same year as the data). Value= . indicates missing or suppressed data or value not calculated.

Education

PUPIL/TEACHER RATIO SCHOOL YEAR BEGINNING...

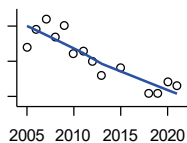


Kansas State Department of Education

Year	County	State of Kansas	Non Metro Kansas	County Rank	Per 1000 or \$ Per Capita
2000	13.8	15.4	13.9	43	.
2001	13.5	15.3	13.8	46	.
2002	13.2	15.4	13.9	52	.
2003	13.2	15.5	13.8	46	.
2004	12.5	15.3	13.6	58	.
2005	12.4	15.0	13.4	57	.
2006	12.1	14.7	13.2	59	.
2007	12.1	14.6	13.1	58	.
2008	11.7	14.4	12.9	64	.
2009	11.7	14.8	13.2	73	.
2010	12.1	15.2	13.6	70	.
2011	12.2	15.1	13.5	62	.
2012	12.0	15.1	13.5	69	.
2013	11.8	15.1	13.5	75	.
2014	12.2	15.0	13.6	61	.
2015	12.3	15.2	13.9	64	.
2016	12.6	15.1	13.7	57	.
2017	12.9	15.5	13.9	53	.
2018	12.5	15.3	13.8	60	.
2019	12.3	15.2	13.7	59	.
2020	11.7	14.7	13.4	62	.
2021	11.4	14.8	13.5	74	.

Social Environment

CHILD CARE FACILITIES: TOTAL CHILD CARE FACILITIES

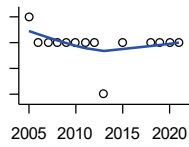


Kansas Department of Health and Environment, Bureau of Adult and Child Care

Year	County	State of Kansas	Non Metro Kansas	County Rank	Per 1000 or \$ Per Capita
2005	34	8,258	3,378	44	3.4
2006	39	8,442	3,429	42	3.9
2007	42	8,241	3,317	38	4.2
2008	37	8,011	3,150	42	3.7
2009	40	7,853	3,066	39	4.0
2010	32	7,354	2,858	45	3.2
2011	33	6,835	2,623	42	3.3
2012	30	6,346	2,409	42	3.0
2013	26	5,754	2,179	43	2.6
2015	28	5,289	2,146	41	2.9
2018	21	4,607	1,904	44	2.2
2019	21	4,287	1,774	44	2.2
2020	24	4,274	1,798	43	2.5
2021	23	4,002	1,700	41	2.4

County: county value. Kansas: state value. County Rank: highest county value ranked #1. (\$000): thousands of dollars. Nonmetro Kansas: Kansas total less Metropolitan Areas as defined by the Office of Management and Budget (OMB; released 3/6/2020). Per 1000: For nonmoney amounts, Per 1000=(county value / county population for the same year as the data) x 1000. \$ Per capita=(county value / county population for the same year as the data). Value= . indicates missing or suppressed data or value not calculated.

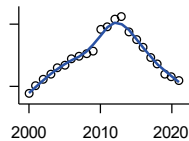
Social Environment



**CHILD CARE FACILITIES:
PRESCHOOLS**

Kansas Department of Health and Environment, Bureau of Adult and Child Care

Year	County	State of Kansas	Non Metro Kansas	County Rank	Per 1000 or \$ Per Capita
2005	3	243	140	31	0.3
2006	2	221	127	42	0.2
2007	2	208	119	42	0.2
2008	2	204	114	46	0.2
2009	2	194	107	42	0.2
2010	2	194	112	44	0.2
2011	2	209	123	47	0.2
2012	2	201	121	47	0.2
2013	0	140	84	105	0.0
2015	2	185	113	42	0.2
2018	2	150	94	41	0.2
2019	2	134	83	35	0.2
2020	2	126	78	34	0.2
2021	2	120	74	29	0.2



FOOD STAMP BENEFICIARIES

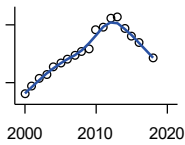
Kansas Social and Rehabilitation Services

Year	County	State of Kansas	Non Metro Kansas	County Rank	Per 1000 or \$ Per Capita
2000	728	110,619	44,825	31	67.9
2001	803	117,241	46,741	31	76.1
2002	868	131,726	52,342	33	83.7
2003	914	155,908	61,280	34	89.0
2004	981	167,971	65,852	34	95.7
2005	1,010	175,710	67,261	33	100.1
2006	1,061	182,821	67,487	33	104.9
2007	1,090	184,035	66,979	33	108.6
2008	1,118	187,377	67,160	32	111.9
2009	1,137	208,007	73,637	33	114.0
2010	1,344	259,609	90,919	33	134.6
2011	1,372	296,542	101,155	34	137.6
2012	1,450	303,257	102,478	33	147.0
2013	1,474	316,424	105,345	35	148.7
2014	1,330	301,377	100,761	35	135.9
2015	1,255	277,614	93,353	35	129.3
2016	1,177	258,412	88,343	35	122.1
2017	1,084	239,592	82,070	35	112.8
2018	1,016	219,738	75,208	35	105.7
2019	917	205,261	69,899	34	95.9
2020	889	198,457	66,721	34	93.5
2021	862	203,424	68,883	36	91.2

County: county value. Kansas: state value. County Rank: highest county value ranked #1. (\$000): thousands of dollars. Nonmetro Kansas: Kansas total less Metropolitan Areas as defined by the Office of Management and Budget (OMB; released 3/6/2020). Per 1000: For nonmoney amounts, Per 1000=(county value / county population for the same year as the data) x 1000. \$ Per capita=(county value / county population for the same year as the data). Value= . indicates missing or suppressed data or value not calculated.

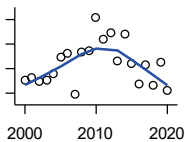
Social Environment

PERCENT OF POPULATION RECEIVING FOOD STAMPS



U.S. Dept. of Agriculture Food and Nutrition Service (1990-1997); Kansas Social and Rehabilitation Services (1998-)

Year	County	State of Kansas	Non Metro Kansas	County Rank	Per 1000 or \$ Per Capita
2000	6.8	4.1	.	12	.
2001	7.6	4.3	.	7	.
2002	8.4	4.9	.	8	.
2003	8.9	5.7	.	12	.
2004	9.6	6.2	.	12	.
2005	10.0	6.4	.	12	.
2006	10.5	6.6	.	8	.
2007	10.9	6.6	.	6	.
2008	11.2	6.7	.	6	.
2009	11.5	7.4	.	7	.
2010	13.5	9.1	.	10	.
2011	13.7	10.3	.	15	.
2012	14.7	10.5	.	13	.
2013	14.8	10.9	.	14	.
2014	13.6	10.4	.	16	.
2015	12.9	9.6	.	16	.
2016	12.2	8.9	.	16	.
2018	10.6	7.5	.	16	.



ESTIMATED NUMBER OF PEOPLE IN POVERTY

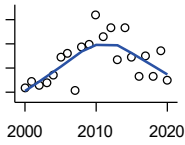
U.S. Census Bureau, Small Area Income and Poverty Estimates

Year	County	State of Kansas	Non Metro Kansas	County Rank	Per 1000 or \$ Per Capita
2000	1,302	235,087	98,984	35	121.4
2001	1,330	252,134	106,257	36	126.0
2002	1,300	265,673	107,542	38	125.3
2003	1,310	278,163	107,323	36	127.5
2004	1,357	297,733	111,534	36	132.4
2005	1,493	310,667	118,768	36	148.0
2006	1,523	327,102	123,700	37	150.6
2007	1,187	301,828	111,953	38	118.3
2008	1,534	307,804	113,015	35	153.6
2009	1,551	359,692	123,394	36	155.5
2010	1,818	374,677	131,502	35	182.1
2011	1,640	383,859	134,912	36	164.5
2012	1,689	392,095	133,800	36	171.2
2013	1,458	391,718	134,067	38	147.1
2014	1,680	381,506	130,213	36	171.7
2015	1,440	366,069	123,073	37	148.3
2016	1,272	343,773	121,314	38	131.9
2017	1,431	335,371	116,854	37	148.9
2018	1,264	336,892	114,490	39	131.5
2019	1,454	319,931	110,692	36	152.0
2020	1,221	300,931	100,998	36	128.4

County: county value. Kansas: state value. County Rank: highest county value ranked #1. (\$000): thousands of dollars. Nonmetro Kansas: Kansas total less Metropolitan Areas as defined by the Office of Management and Budget (OMB; released 3/6/2020). Per 1000: For nonmoney amounts, Per 1000=(county value / county population for the same year as the data) x 1000. \$ Per capita=(county value / county population for the same year as the data). Value= . indicates missing or suppressed data or value not calculated.

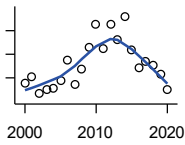
Social Environment

ESTIMATED % OF PEOPLE IN POVERTY



U.S. Census Bureau, Small Area Income and Poverty Estimates

Year	County	State of Kansas	Non Metro Kansas	County Rank	Per 1000 or \$ Per Capita
2000	12.4	8.9	.	15	.
2001	12.9	9.5	.	18	.
2002	12.6	10.0	.	24	.
2003	12.8	10.4	.	21	.
2004	13.4	11.1	.	20	.
2005	14.9	11.7	.	16	.
2006	15.2	12.2	.	19	.
2007	12.1	11.2	.	45	.
2008	15.7	11.3	.	10	.
2009	16.0	13.2	.	17	.
2010	18.4	13.5	.	8	.
2011	16.6	13.8	.	20	.
2012	17.3	14.0	.	16	.
2013	14.7	13.9	.	32	.
2014	17.3	13.5	.	17	.
2015	14.9	12.9	.	22	.
2016	13.3	12.2	.	38	.
2017	15.0	11.9	.	20	.
2018	13.3	11.9	.	37	.
2019	15.4	11.3	.	12	.
2020	13.0	10.6	.	22	.



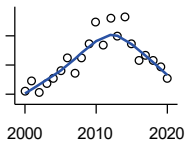
EST. NUMBER OF RELATED CHILDREN AGE 5 TO 17 IN FAMILIES IN POVERTY

U.S. Census Bureau, Small Area Income and Poverty Estimates

Year	County	State of Kansas	Non Metro Kansas	County Rank	Per 1000 or \$ Per Capita
2000	288	50,388	21,854	35	26.9
2001	302	53,755	23,094	34	28.6
2002	266	52,453	21,423	35	25.6
2003	275	55,419	21,809	35	26.8
2004	277	59,392	22,313	36	27.0
2005	294	60,203	24,244	35	29.1
2006	338	64,427	25,326	35	33.4
2007	286	61,149	23,639	36	28.5
2008	319	59,842	22,661	35	31.9
2009	366	71,850	26,251	35	36.7
2010	413	81,077	29,804	35	41.4
2011	362	82,311	29,306	36	36.3
2012	413	87,594	29,781	34	41.9
2013	381	84,325	29,253	37	38.4
2014	430	83,873	29,354	34	43.9
2015	360	78,192	27,482	36	37.1
2016	322	67,810	25,074	36	33.4
2017	335	67,873	25,032	35	34.9
2018	327	68,153	24,928	36	34.0
2019	307	64,613	23,117	36	32.1
2020	276	59,792	21,143	36	29.0

County: county value. Kansas: state value. County Rank: highest county value ranked #1. (\$000): thousands of dollars. Nonmetro Kansas: Kansas total less Metropolitan Areas as defined by the Office of Management and Budget (OMB; released 3/6/2020). Per 1000: For nonmoney amounts, Per 1000=(county value / county population for the same year as the data) x 1000. \$ Per capita=(county value / county population for the same year as the data). Value= . indicates missing or suppressed data or value not calculated.

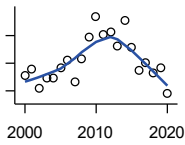
Social Environment



EST. % OF RELATED CHILDREN AGE 5 TO 17 IN FAMILIES IN POVERTY

U.S. Census Bureau, Small Area Income and Poverty Estimates

Year	County	State of Kansas	Non Metro Kansas	County Rank	Per 1000 or \$ Per Capita
2000	14.4	10.0	.	25	.
2001	15.8	10.8	.	21	.
2002	14.2	10.5	.	25	.
2003	15.5	11.3	.	15	.
2004	16.2	12.5	.	14	.
2005	17.3	12.8	.	19	.
2006	19.0	13.2	.	14	.
2007	16.8	12.6	.	19	.
2008	19.0	12.3	.	8	.
2009	20.9	14.7	.	14	.
2010	23.8	15.9	.	9	.
2011	20.8	16.2	.	17	.
2012	24.4	17.2	.	12	.
2013	22.0	16.5	.	16	.
2014	24.6	16.4	.	7	.
2015	20.9	15.3	.	17	.
2016	18.6	13.2	.	21	.
2017	19.3	13.4	.	21	.
2018	18.7	13.5	.	26	.
2019	17.8	12.9	.	23	.
2020	16.1	11.9	.	31	.



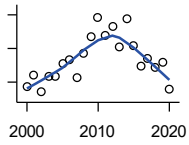
ESTIMATED NUMBER UNDER 18 IN POVERTY

U.S. Census Bureau, Small Area Income and Poverty Estimates

Year	County	State of Kansas	Non Metro Kansas	County Rank	Per 1000 or \$ Per Capita
2000	454	82,619	34,843	35	42.3
2001	479	87,487	36,724	34	45.4
2002	410	84,181	32,870	35	39.5
2003	448	93,896	36,004	35	43.6
2004	444	98,641	36,272	36	43.3
2005	482	100,254	39,118	35	47.8
2006	513	105,193	41,054	35	50.7
2007	434	100,242	37,881	36	43.2
2008	515	100,146	37,552	35	51.6
2009	593	118,187	42,682	35	59.5
2010	669	129,009	46,428	35	67.0
2011	602	133,478	46,832	35	60.4
2012	615	135,261	46,294	35	62.3
2013	562	131,251	44,952	37	56.7
2014	657	125,562	43,933	34	67.1
2015	558	119,994	41,828	36	57.5
2016	473	100,996	37,387	36	49.1
2017	500	102,858	37,955	35	52.0
2018	466	102,616	36,991	36	48.5
2019	484	97,920	34,797	36	50.6
2020	389	88,491	30,767	36	40.9

County: county value. Kansas: state value. County Rank: highest county value ranked #1. (\$000): thousands of dollars. Nonmetro Kansas: Kansas total less Metropolitan Areas as defined by the Office of Management and Budget (OMB; released 3/6/2020). Per 1000: For nonmoney amounts, Per 1000=(county value / county population for the same year as the data) x 1000. \$ Per capita=(county value / county population for the same year as the data). Value= . indicates missing or suppressed data or value not calculated.

Social Environment



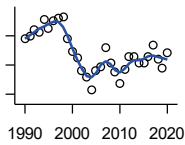
ESTIMATED PERCENT UNDER 18 IN POVERTY

U.S. Census Bureau, Small Area Income and Poverty Estimates

Year	County	State of Kansas	Non Metro Kansas	County Rank	Per 1000 or \$ Per Capita
2000	16.9	11.9	.	24	.
2001	18.6	12.7	.	20	.
2002	16.0	12.1	.	20	.
2003	18.3	13.8	.	17	.
2004	18.4	14.6	.	17	.
2005	20.3	15.2	.	19	.
2006	20.9	15.4	.	19	.
2007	18.2	14.7	.	31	.
2008	21.7	14.6	.	12	.
2009	24.2	17.1	.	12	.
2010	27.1	18.1	.	6	.
2011	24.5	18.8	.	17	.
2012	25.7	19.0	.	13	.
2013	22.7	18.4	.	22	.
2014	26.9	17.6	.	6	.
2015	23.0	16.9	.	15	.
2016	19.9	14.3	.	19	.
2017	21.0	14.7	.	20	.
2018	19.7	14.8	.	24	.
2019	20.5	14.3	.	15	.
2020	16.4	13.0	.	33	.

County: county value. Kansas: state value. County Rank: highest county value ranked #1. (\$000): thousands of dollars. Nonmetro Kansas: Kansas total less Metropolitan Areas as defined by the Office of Management and Budget (OMB; released 3/6/2020). Per 1000: For nonmoney amounts, Per 1000=(county value / county population for the same year as the data) x 1000. \$ Per capita=(county value / county population for the same year as the data). Value= . indicates missing or suppressed data or value not calculated.

Business



ESTABLISHMENTS TOTAL COUNTY BUSINESS PATTERNS

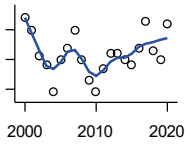
U.S. Census Bureau, County Business Patterns. Beginning with the 2017 data, any tabulation with fewer than 3 establishments were omitted from the release. Data for these establishments are included in the broader total.

Year	County	State of Kansas	Non Metro Kansas	County Rank	Per 1000 or \$ Per Capita
1990	278	65,858	26,802	44	25.0
1991	280	65,941	26,750	43	25.2
1992	284	67,630	27,229	43	25.7
1993	282	68,930	27,655	42	25.8
1994	291	69,822	27,763	43	26.5
1995	285	70,894	28,111	45	26.0
1996	290	72,017	28,353	45	26.6
1997	292	73,924	28,884	45	26.6
1998	293	74,019	28,749	45	26.8
1999	278	74,486	28,536	47	25.7
2000	269	74,939	28,475	48	25.1
2001	265	74,565	28,282	48	25.1
2002	256	75,077	28,183	49	24.7
2003	252	74,972	27,998	49	24.5
2004	243	75,827	28,009	50	23.7
2005	256	76,173	27,830	49	25.4
2006	259	76,446	27,653	48	25.6
2007	272	77,157	27,736	47	27.1
2008	261	76,096	27,314	47	26.1
2009	255	74,698	26,839	47	25.6
2010	247	74,301	26,739	48	24.7
2011	257	73,598	26,555	47	25.8
2012	266	73,944	26,534	43	27.0
2013	266	73,816	26,393	43	26.8
2014	261	74,055	26,292	44	26.7
2015	261	74,526	26,355	45	26.9
2016	266	74,884	26,172	43	27.6
2017	274	74,947	26,093	41	28.5
2018	264	74,559	25,802	41	27.5
2019	258	74,292	25,536	44	27.0
2020	268	73,982	25,178	41	28.2

County: county value. Kansas: state value. County Rank: highest county value ranked #1. (\$000): thousands of dollars. Nonmetro Kansas: Kansas total less Metropolitan Areas as defined by the Office of Management and Budget (OMB; released 3/6/2020). Per 1000: For nonmoney amounts, Per 1000=(county value / county population for the same year as the data) x 1000. \$ Per capita=(county value / county population for the same year as the data). Value= . indicates missing or suppressed data or value not calculated.

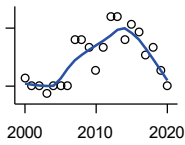
Business

**ESTABLISHMENTS: 1-19
EMPLOYEES**



U.S. Census Bureau, County Business Patterns. Beginning with the 2017 data, any tabulation with fewer than 3 establishments were omitted from the release. Data for these establishments are included in the broader total.

Year	County	State of Kansas	Non Metro Kansas	County Rank	Per 1000 or \$ Per Capita
2000	239	64,527	25,381	49	22.3
2001	235	64,176	25,248	49	22.3
2002	226	64,886	25,208	49	21.8
2003	223	64,714	25,020	50	21.7
2004	214	65,554	24,995	53	20.9
2005	225	65,796	24,839	50	22.3
2006	229	65,764	24,589	49	22.6
2007	235	66,446	24,701	48	23.4
2008	225	65,322	24,257	48	22.5
2009	218	64,128	23,851	49	21.9
2010	214	64,015	23,857	51	21.4
2011	222	63,251	23,571	48	22.3
2012	227	63,519	23,575	48	23.0
2013	227	63,197	23,396	48	22.9
2014	225	63,113	23,229	48	23.0
2015	223	63,280	23,227	48	23.0
2016	229	63,630	23,117	47	23.8
2017	238	63,619	23,022	42	24.8
2018	228	63,233	22,745	47	23.7
2019	225	62,904	22,489	47	23.5
2020	237	62,634	22,173	43	24.9



**ESTABLISHMENTS: 20-99
EMPLOYEES**

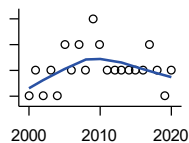
U.S. Census Bureau, County Business Patterns. Beginning with the 2017 data, any tabulation with fewer than 3 establishments were omitted from the release. Data for these establishments are included in the broader total.

Year	County	State of Kansas	Non Metro Kansas	County Rank	Per 1000 or \$ Per Capita
2000	26	8,714	2,653	44	2.4
2001	25	8,692	2,593	43	2.4
2002	25	8,582	2,554	42	2.4
2003	24	8,642	2,568	45	2.3
2004	25	8,658	2,590	40	2.4
2005	25	8,685	2,553	40	2.5
2006	25	8,922	2,612	42	2.5
2007	31	8,938	2,574	38	3.1
2008	31	8,939	2,587	38	3.1
2009	30	8,848	2,551	37	3.0
2010	27	8,612	2,454	38	2.7
2011	30	8,668	2,540	38	3.0
2012	34	8,700	2,500	33	3.4
2013	34	8,870	2,541	33	3.4
2014	31	9,121	2,590	35	3.2
2015	33	9,374	2,664	34	3.4
2016	32	9,412	2,596	35	3.3
2017	29	9,487	2,638	39	3.0
2018	30	9,485	2,621	39	3.1
2019	27	9,485	2,591	40	2.8
2020	25	9,471	2,545	39	2.6

County: county value. Kansas: state value. County Rank: highest county value ranked #1. (\$000): thousands of dollars. Nonmetro Kansas: Kansas total less Metropolitan Areas as defined by the Office of Management and Budget (OMB; released 3/6/2020). Per 1000: For nonmoney amounts, Per 1000=(county value / county population for the same year as the data) x 1000. \$ Per capita=(county value / county population for the same year as the data). Value= . indicates missing or suppressed data or value not calculated.

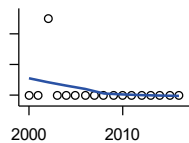
Business

**ESTABLISHMENTS: 100-499
EMPLOYEES**



U.S. Census Bureau, County Business Patterns. Beginning with the 2017 data, any tabulation with fewer than 3 establishments were omitted from the release. Data for these establishments are included in the broader total.

Year	County	State of Kansas	Non Metro Kansas	County Rank	Per 1000 or \$ Per Capita
2000	4	1,555	409	40	0.4
2001	5	1,555	406	37	0.5
2002	4	1,464	386	39	0.4
2003	5	1,470	378	36	0.5
2004	4	1,463	388	39	0.4
2005	6	1,537	400	36	0.6
2006	5	1,598	407	37	0.5
2007	6	1,602	416	36	0.6
2008	5	1,653	421	36	0.5
2009	7	1,551	394	34	0.7
2010	6	1,513	382	34	0.6
2011	5	1,523	395	36	0.5
2012	5	1,567	410	36	0.5
2013	5	1,581	407	36	0.5
2014	5	1,641	421	36	0.5
2015	5	1,693	414	37	0.5
2016	5	1,671	406	37	0.5
2017	6	1,653	.	29	0.6
2018	5	1,650	.	32	0.5
2019	4	1,718	.	37	0.4
2020	5	1,692	.	32	0.5



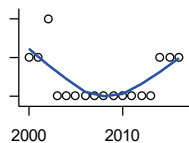
**ESTABLISHMENTS: 500 OR MORE
EMPLOYEES**

U.S. Census Bureau, County Business Patterns. Beginning with the 2017 data, any tabulation with fewer than 3 establishments were omitted from the release. Data for these establishments are included in the broader total.

Year	County	State of Kansas	Non Metro Kansas	County Rank	Per 1000 or \$ Per Capita
2000	0	143	32	105	0.0
2001	0	142	35	105	0.0
2002	1	145	35	29	0.1
2003	0	146	32	105	0.0
2004	0	152	36	105	0.0
2005	0	155	38	105	0.0
2006	0	162	45	105	0.0
2007	0	171	45	105	0.0
2008	0	182	49	105	0.0
2009	0	171	43	105	0.0
2010	0	161	46	105	0.0
2011	0	156	49	105	0.0
2012	0	158	49	105	0.0
2013	0	168	49	105	0.0
2014	0	180	52	105	0.0
2015	0	179	50	105	0.0
2016	0	171	53	105	0.0

County: county value. Kansas: state value. County Rank: highest county value ranked #1. (\$000): thousands of dollars. Nonmetro Kansas: Kansas total less Metropolitan Areas as defined by the Office of Management and Budget (OMB; released 3/6/2020). Per 1000: For nonmoney amounts, Per 1000=(county value / county population for the same year as the data) x 1000. \$ Per capita=(county value / county population for the same year as the data). Value= . indicates missing or suppressed data or value not calculated.

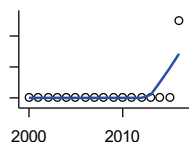
Business



ESTABLISHMENTS: FORESTRY, FISHING, HUNTING, AND AG SUPPORT

U.S. Census Bureau, County Business Patterns. Beginning with the 2017 data, any tabulation with fewer than 3 establishments were omitted from the release. Data for these establishments are included in the broader total.

Year	County	State of Kansas	Non Metro Kansas	County Rank	Per 1000 or \$ Per Capita
2000	1	190	149	74	0.1
2001	1	217	168	80	0.1
2002	2	224	176	56	0.2
2003	0	217	173	105	0.0
2004	0	211	165	105	0.0
2005	0	188	148	105	0.0
2006	0	193	158	105	0.0
2007	0	212	170	105	0.0
2008	0	197	158	105	0.0
2009	0	191	154	105	0.0
2010	0	192	161	105	0.0
2011	0	193	157	105	0.0
2012	0	204	164	105	0.0
2013	0	208	166	105	0.0
2014	1	194	152	83	0.1
2015	1	192	149	81	0.1
2016	1	181	142	80	0.1



ESTABLISHMENTS: MINING

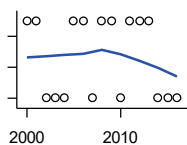
U.S. Census Bureau, County Business Patterns. Beginning with the 2017 data, any tabulation with fewer than 3 establishments were omitted from the release. Data for these establishments are included in the broader total.

Year	County	State of Kansas	Non Metro Kansas	County Rank	Per 1000 or \$ Per Capita
2000	0	868	619	105	0.0
2001	0	878	622	105	0.0
2002	0	847	615	105	0.0
2003	0	864	633	105	0.0
2004	0	880	647	105	0.0
2005	0	941	695	105	0.0
2006	0	991	734	105	0.0
2007	0	1,000	759	105	0.0
2008	0	1,047	799	105	0.0
2009	0	1,016	772	105	0.0
2010	0	1,009	762	105	0.0
2011	0	1,013	763	105	0.0
2012	0	1,048	789	105	0.0
2013	0	1,060	802	105	0.0
2014	0	1,102	828	105	0.0
2015	0	1,069	810	105	0.0
2016	1	990	747	93	0.1

County: county value. Kansas: state value. County Rank: highest county value ranked #1. (\$000): thousands of dollars. Nonmetro Kansas: Kansas total less Metropolitan Areas as defined by the Office of Management and Budget (OMB; released 3/6/2020). Per 1000: For nonmoney amounts, Per 1000=(county value / county population for the same year as the data) x 1000. \$ Per capita=(county value / county population for the same year as the data). Value= . indicates missing or suppressed data or value not calculated.

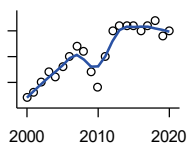
Business

ESTABLISHMENTS: UTILITIES



U.S. Census Bureau, County Business Patterns. Beginning with the 2017 data, any tabulation with fewer than 3 establishments were omitted from the release. Data for these establishments are included in the broader total.

Year	County	State of Kansas	Non Metro Kansas	County Rank	Per 1000 or \$ Per Capita
2000	3	274	192	37	0.3
2001	3	290	204	39	0.3
2002	2	278	195	64	0.2
2003	2	268	180	63	0.2
2004	2	247	164	59	0.2
2005	3	254	172	34	0.3
2006	3	248	169	32	0.3
2007	2	222	156	56	0.2
2008	3	244	166	35	0.3
2009	3	222	152	32	0.3
2010	2	197	129	49	0.2
2011	3	230	156	31	0.3
2012	3	232	156	30	0.3
2013	3	234	159	29	0.3
2014	2	232	160	58	0.2
2015	2	237	165	59	0.2
2016	2	245	171	60	0.2



ESTABLISHMENTS: CONSTRUCTION

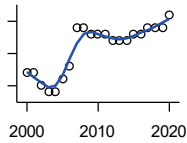
U.S. Census Bureau, County Business Patterns. Beginning with the 2017 data, any tabulation with fewer than 3 establishments were omitted from the release. Data for these establishments are included in the broader total.

Year	County	State of Kansas	Non Metro Kansas	County Rank	Per 1000 or \$ Per Capita
2000	17	7,703	2,616	65	1.6
2001	18	7,449	2,520	65	1.7
2002	20	7,519	2,482	60	1.9
2003	22	7,722	2,521	59	2.1
2004	21	7,887	2,518	58	2.0
2005	23	8,032	2,515	55	2.3
2006	25	8,031	2,494	51	2.5
2007	27	8,057	2,547	48	2.7
2008	26	7,831	2,522	50	2.6
2009	22	7,342	2,452	54	2.2
2010	19	7,064	2,394	61	1.9
2011	25	6,774	2,361	48	2.5
2012	30	6,741	2,393	40	3.0
2013	31	6,802	2,394	40	3.1
2014	31	6,920	2,383	37	3.2
2015	31	7,014	2,377	36	3.2
2016	30	6,988	2,343	35	3.1
2017	31	7,031	2,316	34	3.2
2018	32	7,124	2,285	33	3.3
2019	29	7,060	2,242	39	3.0
2020	30	7,089	2,249	38	3.2

County: county value. Kansas: state value. County Rank: highest county value ranked #1. (\$000): thousands of dollars. Nonmetro Kansas: Kansas total less Metropolitan Areas as defined by the Office of Management and Budget (OMB; released 3/6/2020). Per 1000: For nonmoney amounts, Per 1000=(county value / county population for the same year as the data) x 1000. \$ Per capita=(county value / county population for the same year as the data). Value= . indicates missing or suppressed data or value not calculated.

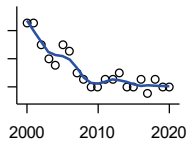
Business

**ESTABLISHMENTS:
MANUFACTURING**



U.S. Census Bureau, County Business Patterns. Beginning with the 2017 data, any tabulation with fewer than 3 establishments were omitted from the release. Data for these establishments are included in the broader total.

Year	County	State of Kansas	Non Metro Kansas	County Rank	Per 1000 or \$ Per Capita
2000	12	3,229	1,316	43	1.1
2001	12	3,240	1,323	42	1.1
2002	10	3,181	1,289	51	1.0
2003	9	3,159	1,291	54	0.9
2004	9	3,179	1,313	56	0.9
2005	11	3,128	1,278	46	1.1
2006	13	3,165	1,290	40	1.3
2007	19	3,184	1,316	37	1.9
2008	19	3,171	1,297	36	1.9
2009	18	3,026	1,240	37	1.8
2010	18	2,955	1,222	36	1.8
2011	18	2,877	1,193	35	1.8
2012	17	2,889	1,197	35	1.7
2013	17	2,836	1,165	35	1.7
2014	17	2,831	1,168	35	1.7
2015	18	2,817	1,161	35	1.9
2016	18	2,791	1,150	34	1.9
2017	19	2,760	1,147	34	2.0
2018	19	2,725	1,126	35	2.0
2019	19	2,695	1,111	32	2.0
2020	21	2,673	1,103	30	2.2



**ESTABLISHMENTS: WHOLESALE
TRADE**

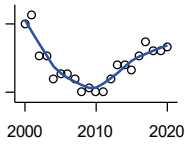
U.S. Census Bureau, County Business Patterns. Beginning with the 2017 data, any tabulation with fewer than 3 establishments were omitted from the release. Data for these establishments are included in the broader total.

Year	County	State of Kansas	Non Metro Kansas	County Rank	Per 1000 or \$ Per Capita
2000	23	4,876	1,776	32	2.1
2001	23	4,811	1,769	33	2.2
2002	20	4,719	1,750	40	1.9
2003	18	4,590	1,637	46	1.8
2004	17	4,553	1,634	48	1.7
2005	20	4,541	1,618	37	2.0
2006	19	4,517	1,596	42	1.9
2007	16	4,555	1,629	51	1.6
2008	15	4,501	1,622	52	1.5
2009	14	4,437	1,614	55	1.4
2010	14	4,432	1,612	56	1.4
2011	15	4,400	1,660	53	1.5
2012	15	4,563	1,755	58	1.5
2013	16	4,501	1,741	50	1.6
2014	14	4,497	1,746	56	1.4
2015	14	4,459	1,755	56	1.4
2016	15	4,457	1,732	53	1.6
2017	13	4,436	1,774	64	1.4
2018	15	4,330	1,727	54	1.6
2019	14	4,291	1,713	58	1.5
2020	14	4,191	1,677	55	1.5

County: county value. Kansas: state value. County Rank: highest county value ranked #1. (\$000): thousands of dollars. Nonmetro Kansas: Kansas total less Metropolitan Areas as defined by the Office of Management and Budget (OMB; released 3/6/2020). Per 1000: For nonmoney amounts, Per 1000=(county value / county population for the same year as the data) x 1000. \$ Per capita=(county value / county population for the same year as the data). Value= . indicates missing or suppressed data or value not calculated.

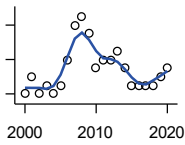
Business

ESTABLISHMENTS: RETAIL TRADE



U.S. Census Bureau, County Business Patterns. Beginning with the 2017 data, any tabulation with fewer than 3 establishments were omitted from the release. Data for these establishments are included in the broader total.

Year	County	State of Kansas	Non Metro Kansas	County Rank	Per 1000 or \$ Per Capita
2000	45	12,261	5,240	50	4.2
2001	47	12,206	5,207	49	4.5
2002	38	11,980	5,082	60	3.7
2003	38	11,834	5,049	61	3.7
2004	33	11,748	4,967	65	3.2
2005	34	11,562	4,834	63	3.4
2006	34	11,367	4,702	61	3.4
2007	33	11,306	4,653	62	3.3
2008	30	10,978	4,494	64	3.0
2009	31	10,760	4,372	63	3.1
2010	30	10,727	4,346	65	3.0
2011	30	10,655	4,289	62	3.0
2012	33	10,585	4,202	58	3.3
2013	36	10,433	4,147	53	3.6
2014	36	10,391	4,070	51	3.7
2015	35	10,327	4,061	54	3.6
2016	38	10,197	3,965	47	3.9
2017	41	10,074	3,885	43	4.3
2018	39	9,866	3,797	44	4.1
2019	39	9,762	3,750	45	4.1
2020	40	9,591	3,666	44	4.2



ESTABLISHMENTS: TRANSPORTATION & WAREHOUSING

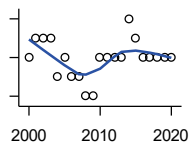
U.S. Census Bureau, County Business Patterns. Beginning with the 2017 data, any tabulation with fewer than 3 establishments were omitted from the release. Data for these establishments are included in the broader total.

Year	County	State of Kansas	Non Metro Kansas	County Rank	Per 1000 or \$ Per Capita
2000	10	2,474	1,293	69	0.9
2001	12	2,463	1,298	58	1.1
2002	10	2,461	1,278	69	1.0
2003	11	2,576	1,297	59	1.1
2004	10	2,651	1,324	66	1.0
2005	11	2,632	1,326	61	1.1
2006	14	2,626	1,295	51	1.4
2007	18	2,664	1,314	39	1.8
2008	19	2,675	1,329	34	1.9
2009	17	2,635	1,313	39	1.7
2010	13	2,615	1,313	51	1.3
2011	14	2,579	1,285	45	1.4
2012	14	2,519	1,243	44	1.4
2013	15	2,492	1,226	42	1.5
2014	13	2,518	1,240	48	1.3
2015	11	2,554	1,257	52	1.1
2016	11	2,567	1,241	53	1.1
2017	11	2,640	1,245	53	1.1
2018	11	2,627	1,238	55	1.1
2019	12	2,615	1,209	49	1.3
2020	13	2,589	1,179	45	1.4

County: county value. Kansas: state value. County Rank: highest county value ranked #1. (\$000): thousands of dollars. Nonmetro Kansas: Kansas total less Metropolitan Areas as defined by the Office of Management and Budget (OMB; released 3/6/2020). Per 1000: For nonmoney amounts, Per 1000=(county value / county population for the same year as the data) x 1000. \$ Per capita=(county value / county population for the same year as the data). Value= . indicates missing or suppressed data or value not calculated.

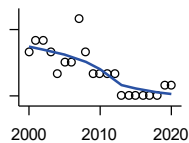
Business

ESTABLISHMENTS: INFORMATION



U.S. Census Bureau, County Business Patterns. Beginning with the 2017 data, any tabulation with fewer than 3 establishments were omitted from the release. Data for these establishments are included in the broader total.

Year	County	State of Kansas	Non Metro Kansas	County Rank	Per 1000 or \$ Per Capita
2000	7	1,542	578	47	0.7
2001	8	1,556	566	46	0.8
2002	8	1,517	551	42	0.8
2003	8	1,516	564	39	0.8
2004	6	1,518	556	52	0.6
2005	7	1,519	536	41	0.7
2006	6	1,549	559	50	0.6
2007	6	1,504	527	46	0.6
2008	5	1,468	522	51	0.5
2009	5	1,420	510	50	0.5
2010	7	1,437	527	41	0.7
2011	7	1,428	537	43	0.7
2012	7	1,387	515	39	0.7
2013	7	1,337	487	37	0.7
2014	9	1,335	496	28	0.9
2015	8	1,359	510	33	0.8
2016	7	1,431	537	42	0.7
2017	7	1,439	.	43	0.7
2018	7	1,407	.	41	0.7
2019	7	1,422	.	42	0.7
2020	7	1,424	.	41	0.7



ESTABLISHMENTS: FINANCE & INSURANCE

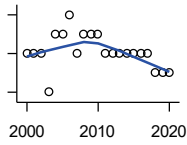
U.S. Census Bureau, County Business Patterns. Beginning with the 2017 data, any tabulation with fewer than 3 establishments were omitted from the release. Data for these establishments are included in the broader total.

Year	County	State of Kansas	Non Metro Kansas	County Rank	Per 1000 or \$ Per Capita
2000	24	5,209	1,848	36	2.2
2001	25	5,178	1,828	32	2.4
2002	25	5,496	1,911	38	2.4
2003	24	5,569	1,907	39	2.3
2004	22	5,572	1,913	43	2.1
2005	23	5,708	1,964	40	2.3
2006	23	5,877	1,976	38	2.3
2007	27	6,017	2,030	35	2.7
2008	24	6,010	2,023	38	2.4
2009	22	5,933	1,994	41	2.2
2010	22	5,872	1,975	42	2.2
2011	22	5,854	1,985	42	2.2
2012	22	5,993	2,024	43	2.2
2013	20	5,903	1,993	45	2.0
2014	20	5,894	2,000	45	2.0
2015	20	5,932	1,998	45	2.1
2016	20	6,022	2,021	45	2.1
2017	20	6,026	2,007	44	2.1
2018	20	6,023	1,997	44	2.1
2019	21	5,953	1,977	43	2.2
2020	21	5,926	1,969	42	2.2

County: county value. Kansas: state value. County Rank: highest county value ranked #1. (\$000): thousands of dollars. Nonmetro Kansas: Kansas total less Metropolitan Areas as defined by the Office of Management and Budget (OMB; released 3/6/2020). Per 1000: For nonmoney amounts, Per 1000=(county value / county population for the same year as the data) x 1000. \$ Per capita=(county value / county population for the same year as the data). Value= . indicates missing or suppressed data or value not calculated.

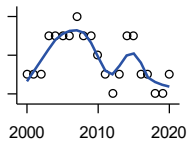
Business

ESTABLISHMENTS: REAL ESTATE, RENTAL, AND LEASING



U.S. Census Bureau, County Business Patterns. Beginning with the 2017 data, any tabulation with fewer than 3 establishments were omitted from the release. Data for these establishments are included in the broader total.

Year	County	State of Kansas	Non Metro Kansas	County Rank	Per 1000 or \$ Per Capita
2000	5	2,733	687	48	0.5
2001	5	2,849	724	51	0.5
2002	5	2,952	735	52	0.5
2003	3	3,007	727	60	0.3
2004	6	3,108	713	45	0.6
2005	6	3,203	727	46	0.6
2006	7	3,268	736	40	0.7
2007	5	3,286	721	47	0.5
2008	6	3,239	738	41	0.6
2009	6	3,122	723	41	0.6
2010	6	3,050	708	40	0.6
2011	5	3,002	692	44	0.5
2012	5	2,981	691	48	0.5
2013	5	3,046	717	48	0.5
2014	5	3,135	738	51	0.5
2015	5	3,179	744	48	0.5
2016	5	3,293	757	49	0.5
2017	5	3,389	.	50	0.5
2018	4	3,409	.	55	0.4
2019	4	3,464	.	57	0.4
2020	4	3,500	.	59	0.4



ESTABLISHMENTS: PROFESSIONAL, SCIENTIFIC, AND TECHNICAL SERVICES

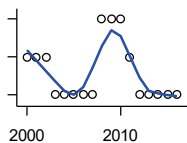
U.S. Census Bureau, County Business Patterns. Beginning with the 2017 data, any tabulation with fewer than 3 establishments were omitted from the release. Data for these establishments are included in the broader total.

Year	County	State of Kansas	Non Metro Kansas	County Rank	Per 1000 or \$ Per Capita
2000	13	6,424	1,690	59	1.2
2001	13	6,492	1,665	58	1.2
2002	13	6,719	1,704	60	1.3
2003	15	6,793	1,735	55	1.5
2004	15	7,025	1,730	55	1.5
2005	15	7,087	1,711	55	1.5
2006	15	7,231	1,736	55	1.5
2007	16	7,329	1,729	48	1.6
2008	15	7,133	1,671	49	1.5
2009	15	7,122	1,676	48	1.5
2010	14	7,172	1,680	51	1.4
2011	13	7,115	1,668	58	1.3
2012	12	7,122	1,681	62	1.2
2013	13	7,129	1,698	61	1.3
2014	15	7,206	1,682	51	1.5
2015	15	7,184	1,687	50	1.5
2016	13	7,146	1,659	56	1.3
2017	13	7,224	1,679	58	1.4
2018	12	7,138	1,655	59	1.2
2019	12	7,119	.	60	1.3
2020	13	7,117	.	57	1.4

County: county value. Kansas: state value. County Rank: highest county value ranked #1. (\$000): thousands of dollars. Nonmetro Kansas: Kansas total less Metropolitan Areas as defined by the Office of Management and Budget (OMB; released 3/6/2020). Per 1000: For nonmoney amounts, Per 1000=(county value / county population for the same year as the data) x 1000. \$ Per capita=(county value / county population for the same year as the data). Value= . indicates missing or suppressed data or value not calculated.

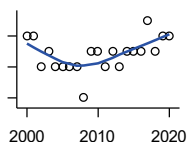
Business

ESTABLISHMENTS: MANAGEMENT OF COMPANIES AND ENTERPRISES



U.S. Census Bureau, County Business Patterns. Beginning with the 2017 data, any tabulation with fewer than 3 establishments were omitted from the release. Data for these establishments are included in the broader total.

Year	County	State of Kansas	Non Metro Kansas	County Rank	Per 1000 or \$ Per Capita
2000	1	622	145	68	0.1
2001	1	593	141	62	0.1
2002	1	597	152	63	0.1
2003	0	561	135	105	0.0
2004	0	569	133	105	0.0
2005	0	543	127	105	0.0
2006	0	542	131	105	0.0
2007	0	550	133	105	0.0
2008	2	553	139	42	0.2
2009	2	575	136	41	0.2
2010	2	567	131	40	0.2
2011	1	552	134	60	0.1
2012	0	593	135	105	0.0
2013	0	590	135	105	0.0
2014	0	603	136	105	0.0
2015	0	613	140	105	0.0
2016	0	655	171	105	0.0



ESTABLISHMENTS: ADMIN, SUPPORT, WASTE MGMT., AND REMEDIATION

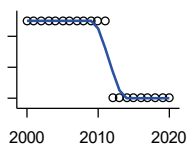
U.S. Census Bureau, County Business Patterns. Beginning with the 2017 data, any tabulation with fewer than 3 establishments were omitted from the release. Data for these establishments are included in the broader total.

Year	County	State of Kansas	Non Metro Kansas	County Rank	Per 1000 or \$ Per Capita
2000	6	3,307	871	58	0.6
2001	6	3,421	913	57	0.6
2002	4	3,232	882	74	0.4
2003	5	3,189	858	68	0.5
2004	4	3,301	891	73	0.4
2005	4	3,342	896	73	0.4
2006	4	3,395	886	74	0.4
2007	4	3,522	921	73	0.4
2008	2	3,587	932	95	0.2
2009	5	3,505	904	67	0.5
2010	5	3,494	897	68	0.5
2011	4	3,447	903	75	0.4
2012	5	3,462	891	65	0.5
2013	4	3,489	904	77	0.4
2014	5	3,569	933	64	0.5
2015	5	3,630	964	66	0.5
2016	5	3,705	987	66	0.5
2017	7	3,741	991	53	0.7
2018	5	3,740	983	67	0.5
2019	6	3,762	991	61	0.6
2020	6	3,807	989	59	0.6

County: county value. Kansas: state value. County Rank: highest county value ranked #1. (\$000): thousands of dollars. Nonmetro Kansas: Kansas total less Metropolitan Areas as defined by the Office of Management and Budget (OMB; released 3/6/2020). Per 1000: For nonmoney amounts, Per 1000=(county value / county population for the same year as the data) x 1000. \$ Per capita=(county value / county population for the same year as the data). Value= . indicates missing or suppressed data or value not calculated.

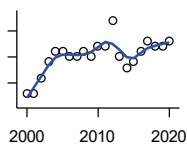
Business

ESTABLISHMENTS: EDUCATIONAL SERVICES



U.S. Census Bureau, County Business Patterns. Beginning with the 2017 data, any tabulation with fewer than 3 establishments were omitted from the release. Data for these establishments are included in the broader total.

Year	County	State of Kansas	Non Metro Kansas	County Rank	Per 1000 or \$ Per Capita
2000	4	604	155	25	0.4
2001	4	625	168	28	0.4
2002	4	666	165	26	0.4
2003	4	663	173	27	0.4
2004	4	690	173	28	0.4
2005	4	699	168	26	0.4
2006	4	698	175	28	0.4
2007	4	691	165	27	0.4
2008	4	692	158	28	0.4
2009	4	690	150	27	0.4
2010	4	700	149	26	0.4
2011	4	711	150	26	0.4
2012	3	724	145	33	0.3
2013	3	735	153	33	0.3
2014	3	722	152	32	0.3
2015	3	754	152	33	0.3
2016	3	728	150	31	0.3
2017	3	720	.	30	0.3
2018	3	744	.	31	0.3
2019	3	759	.	32	0.3
2020	3	736	.	31	0.3



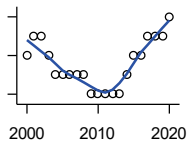
ESTABLISHMENTS: HEALTH CARE AND SOCIAL ASSISTANCE

U.S. Census Bureau, County Business Patterns. Beginning with the 2017 data, any tabulation with fewer than 3 establishments were omitted from the release. Data for these establishments are included in the broader total.

Year	County	State of Kansas	Non Metro Kansas	County Rank	Per 1000 or \$ Per Capita
2000	23	6,564	2,591	49	2.1
2001	23	6,636	2,590	50	2.2
2002	26	7,052	2,777	46	2.5
2003	29	7,129	2,792	43	2.8
2004	31	7,239	2,813	41	3.0
2005	31	7,412	2,855	43	3.1
2006	30	7,477	2,860	42	3.0
2007	30	7,661	2,864	43	3.0
2008	31	7,651	2,810	43	3.1
2009	30	7,696	2,787	42	3.0
2010	32	7,751	2,830	41	3.2
2011	32	7,804	2,817	42	3.2
2012	37	7,973	2,793	36	3.8
2013	30	7,877	2,729	41	3.0
2014	28	7,809	2,686	43	2.9
2015	29	8,103	2,692	43	3.0
2016	31	8,315	2,678	41	3.2
2017	33	8,136	2,646	38	3.4
2018	32	8,126	2,632	38	3.3
2019	32	8,184	2,587	38	3.3
2020	33	8,290	2,571	38	3.5

County: county value. Kansas: state value. County Rank: highest county value ranked #1. (\$000): thousands of dollars. Nonmetro Kansas: Kansas total less Metropolitan Areas as defined by the Office of Management and Budget (OMB; released 3/6/2020). Per 1000: For nonmoney amounts, Per 1000=(county value / county population for the same year as the data) x 1000. \$ Per capita=(county value / county population for the same year as the data). Value= . indicates missing or suppressed data or value not calculated.

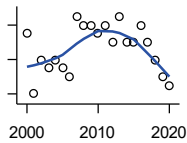
Business



ESTABLISHMENTS: ARTS, ENTERTAINMENT, AND RECREATION

U.S. Census Bureau, County Business Patterns. Beginning with the 2017 data, any tabulation with fewer than 3 establishments were omitted from the release. Data for these establishments are included in the broader total.

Year	County	State of Kansas	Non Metro Kansas	County Rank	Per 1000 or \$ Per Capita
2000	6	981	419	38	0.6
2001	7	1,009	433	35	0.7
2002	7	1,054	441	36	0.7
2003	6	1,045	443	42	0.6
2004	5	1,082	445	45	0.5
2005	5	1,109	446	45	0.5
2006	5	1,080	445	45	0.5
2007	5	1,092	444	49	0.5
2008	5	1,062	423	47	0.5
2009	4	1,063	421	56	0.4
2010	4	1,018	406	55	0.4
2011	4	997	387	49	0.4
2012	4	1,000	388	53	0.4
2013	4	1,009	377	52	0.4
2014	5	1,030	365	44	0.5
2015	6	1,031	357	35	0.6
2016	6	1,060	366	35	0.6
2017	7	1,096	.	31	0.7
2018	7	1,088	.	30	0.7
2019	7	1,087	.	30	0.7
2020	8	1,064	.	26	0.8



ESTABLISHMENTS: ACCOMMODATION AND FOOD SERVICES

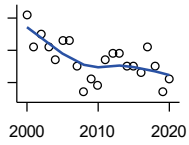
U.S. Census Bureau, County Business Patterns. Beginning with the 2017 data, any tabulation with fewer than 3 establishments were omitted from the release. Data for these establishments are included in the broader total.

Year	County	State of Kansas	Non Metro Kansas	County Rank	Per 1000 or \$ Per Capita
2000	23	5,536	2,213	46	2.1
2001	16	5,551	2,173	58	1.5
2002	20	5,610	2,174	48	1.9
2003	19	5,635	2,188	51	1.8
2004	20	5,681	2,160	46	2.0
2005	19	5,776	2,170	49	1.9
2006	18	5,745	2,132	52	1.8
2007	25	5,877	2,095	38	2.5
2008	24	5,843	2,052	39	2.4
2009	24	5,794	2,029	38	2.4
2010	23	5,898	2,046	39	2.3
2011	24	5,958	2,067	39	2.4
2012	22	5,951	2,046	44	2.2
2013	25	6,061	2,070	37	2.5
2014	22	5,985	2,024	41	2.2
2015	22	6,034	2,063	40	2.3
2016	24	6,126	2,094	40	2.5
2017	22	6,250	2,123	44	2.3
2018	20	6,256	2,128	45	2.1
2019	18	6,231	2,131	47	1.9
2020	17	6,206	2,131	50	1.8

County: county value. Kansas: state value. County Rank: highest county value ranked #1. (\$000): thousands of dollars. Nonmetro Kansas: Kansas total less Metropolitan Areas as defined by the Office of Management and Budget (OMB; released 3/6/2020). Per 1000: For nonmoney amounts, Per 1000=(county value / county population for the same year as the data) x 1000. \$ Per capita=(county value / county population for the same year as the data). Value= . indicates missing or suppressed data or value not calculated.

Business

ESTABLISHMENTS: OTHER SERVICES

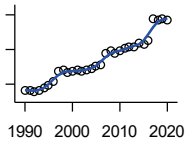


U.S. Census Bureau, County Business Patterns. Beginning with the 2017 data, any tabulation with fewer than 3 establishments were omitted from the release. Data for these establishments are included in the broader total.

Year	County	State of Kansas	Non Metro Kansas	County Rank	Per 1000 or \$ Per Capita
2000	43	8,423	3,636	41	4.0
2001	38	8,310	3,614	46	3.6
2002	40	8,552	3,658	43	3.9
2003	38	8,411	3,605	45	3.7
2004	36	8,343	3,597	46	3.5
2005	39	8,321	3,571	44	3.9
2006	39	8,225	3,490	45	3.9
2007	35	8,355	3,534	49	3.5
2008	31	8,104	3,406	53	3.1
2009	33	8,040	3,405	49	3.3
2010	32	7,998	3,379	49	3.2
2011	36	7,883	3,294	45	3.6
2012	37	7,913	3,303	45	3.8
2013	37	7,947	3,290	45	3.7
2014	35	7,943	3,285	47	3.6
2015	35	7,869	3,255	45	3.6
2016	34	7,839	3,204	47	3.5
2017	38	7,873	3,189	41	4.0
2018	35	7,853	3,176	44	3.6
2019	31	7,834	3,138	49	3.2
2020	33	7,787	3,073	46	3.5

County: county value. Kansas: state value. County Rank: highest county value ranked #1. (\$000): thousands of dollars. Nonmetro Kansas: Kansas total less Metropolitan Areas as defined by the Office of Management and Budget (OMB; released 3/6/2020). Per 1000: For nonmoney amounts, Per 1000=(county value / county population for the same year as the data) x 1000. \$ Per capita=(county value / county population for the same year as the data). Value= . indicates missing or suppressed data or value not calculated.

Business



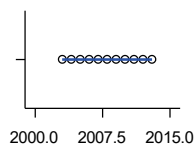
**TOTAL ANNUAL PAYROLL (\$000)
COUNTY BUSINESS PATTERNS**

U.S. Census Bureau, County Business Patterns. Beginning with the 2017 data, any tabulation with fewer than 3 establishments were omitted from the release. Data for these establishments are included in the broader total.

Year	County	State of Kansas	Non Metro Kansas	County Rank	Per 1000 or \$ Per Capita
1990	41,586	17,487,316	4,442,429	37	3,737.1
1991	41,664	18,162,326	4,612,616	39	3,750.1
1992	38,403	19,244,346	4,882,060	44	3,477.3
1993	40,114	20,087,190	5,182,780	43	3,669.1
1994	44,855	21,201,652	5,541,423	41	4,085.2
1995	48,091	22,825,920	5,875,310	41	4,383.5
1996	54,622	24,613,884	6,198,398	40	5,010.7
1997	68,616	26,787,098	6,599,061	36	6,254.9
1998	69,648	28,747,576	6,871,794	37	6,360.5
1999	66,341	30,600,434	7,121,961	38	6,141.5
2000	68,653	31,990,762	7,520,424	38	6,401.8
2001	71,121	33,303,992	7,598,165	39	6,738.1
2002	68,330	33,152,962	7,572,002	39	6,587.3
2003	70,660	34,040,944	7,726,561	39	6,879.6
2004	73,096	35,725,812	8,303,779	40	7,129.2
2005	75,233	36,646,064	8,586,986	40	7,458.4
2006	77,289	39,251,388	9,178,947	40	7,644.1
2007	94,284	42,022,753	.	39	9,394.6
2008	98,412	43,984,689	.	38	9,853.0
2009	94,265	42,146,866	.	38	9,453.0
2010	97,256	42,686,303	10,294,015	38	9,741.2
2011	101,176	43,733,944	.	38	10,146.0
2012	103,229	45,608,072	11,222,183	38	10,463.1
2013	104,503	47,715,601	11,446,751	38	10,543.1
2014	109,078	49,712,832	11,957,931	38	11,147.5
2015	107,831	51,259,676	11,975,718	40	11,107.4
2016	113,463	51,016,318	12,148,646	39	11,768.8
2017	144,126	52,754,605	12,448,592	37	14,999.1
2018	141,955	55,087,460	12,810,270	38	14,771.6
2019	144,625	57,272,387	13,123,288	38	15,121.8
2020	142,664	58,374,388	14,007,955	38	15,004.6

County: county value. Kansas: state value. County Rank: highest county value ranked #1. (\$000): thousands of dollars. Nonmetro Kansas: Kansas total less Metropolitan Areas as defined by the Office of Management and Budget (OMB; released 3/6/2020). Per 1000: For nonmoney amounts, Per 1000=(county value / county population for the same year as the data) x 1000. \$ Per capita=(county value / county population for the same year as the data). Value= . indicates missing or suppressed data or value not calculated.

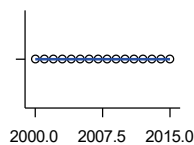
Business



**TOTAL ANNUAL PAYROLL(\$000):
FORESTRY, FISHING, HUNTING, AND
AG SUPPORT**

U.S. Census Bureau, County Business Patterns. Beginning with the 2017 data, any tabulation with fewer than 3 establishments were omitted from the release. Data for these establishments are included in the broader total.

Year	County	State of Kansas	Non Metro Kansas	County Rank	Per 1000 or \$ Per Capita
2000	.	13,551	.	.	.
2001
2002	.	16,528	.	.	.
2003	0	17,247	.	.	0.0
2004	0	17,552	.	.	0.0
2005	0	16,298	.	.	0.0
2006	0	17,908	.	.	0.0
2007	0	22,199	.	.	0.0
2008	0	21,359	.	.	0.0
2009	0	22,466	.	.	0.0
2010	0	22,753	.	.	0.0
2011	0	23,320	.	.	0.0
2012	0	27,492	.	.	0.0
2013	0	30,360	.	.	0.0
2014	.	34,862	.	.	.
2015	.	35,980	.	.	.



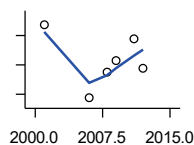
**TOTAL ANNUAL PAYROLL(\$000):
MINING**

U.S. Census Bureau, County Business Patterns. Beginning with the 2017 data, any tabulation with fewer than 3 establishments were omitted from the release. Data for these establishments are included in the broader total.

Year	County	State of Kansas	Non Metro Kansas	County Rank	Per 1000 or \$ Per Capita
2000	0	240,079	.	.	0.0
2001	0	273,838	.	.	0.0
2002	0	262,277	.	.	0.0
2003	0	290,652	.	.	0.0
2004	0	326,997	.	.	0.0
2005	0	381,069	.	.	0.0
2006	0	482,102	.	.	0.0
2007	0	551,751	.	.	0.0
2008	0	620,446	.	.	0.0
2009	0	465,070	.	.	0.0
2010	0	485,841	.	.	0.0
2011	0	541,536	.	.	0.0
2012	0	600,402	.	.	0.0
2013	0	599,788	.	.	0.0
2014	0	678,673	.	.	0.0
2015	0	552,658	.	.	0.0

County: county value. Kansas: state value. County Rank: highest county value ranked #1. (\$000): thousands of dollars. Nonmetro Kansas: Kansas total less Metropolitan Areas as defined by the Office of Management and Budget (OMB; released 3/6/2020). Per 1000: For nonmoney amounts, Per 1000=(county value / county population for the same year as the data) x 1000. \$ Per capita=(county value / county population for the same year as the data). Value= . indicates missing or suppressed data or value not calculated.

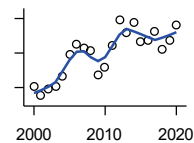
Business



**TOTAL ANNUAL PAYROLL(\$000):
UTILITIES**

U.S. Census Bureau, County Business Patterns. Beginning with the 2017 data, any tabulation with fewer than 3 establishments were omitted from the release. Data for these establishments are included in the broader total.

Year	County	State of Kansas	Non Metro Kansas	County Rank	Per 1000 or \$ Per Capita
2000	.	410,313	.	.	.
2001	1,876	452,057	.	.	177.7
2002	.	377,559	.	.	.
2003	.	378,157	.	.	.
2004	.	377,809	.	.	.
2005	.	429,864	.	.	.
2006	1,373	443,999	.	.	135.8
2007	.	480,068	.	.	.
2008	1,549	541,066	.	.	155.1
2009	1,628	563,373	.	.	163.3
2010	.	512,628	.	.	.
2011	1,779	653,229	.	.	178.4
2012	1,581	625,451	.	.	160.2
2013	.	625,347	.	.	.
2014	.	610,960	.	.	.
2015	.	668,559	.	.	.



**TOTAL ANNUAL PAYROLL(\$000):
CONSTRUCTION**

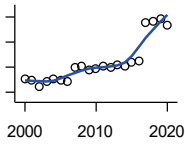
U.S. Census Bureau, County Business Patterns. Beginning with the 2017 data, any tabulation with fewer than 3 establishments were omitted from the release. Data for these establishments are included in the broader total.

Year	County	State of Kansas	Non Metro Kansas	County Rank	Per 1000 or \$ Per Capita
2000	1,523	2,256,057	.	.	142.0
2001	1,258	2,320,652	.	.	119.2
2002	1,445	2,302,229	.	.	139.3
2003	1,534	2,282,021	.	.	149.4
2004	1,830	2,302,854	.	.	178.5
2005	2,454	2,465,977	.	.	243.3
2006	2,757	2,700,351	.	.	272.7
2007	2,638	2,772,168	.	.	262.9
2008	2,553	2,950,073	.	.	255.6
2009	1,872	2,709,864	.	.	187.7
2010	2,103	2,553,555	.	.	210.6
2011	2,713	2,550,355	.	.	272.1
2012	3,455	2,733,284	.	.	350.2
2013	3,095	2,866,801	.	.	312.2
2014	3,383	3,135,814	.	.	345.7
2015	2,846	3,270,952	.	.	293.2
2016	2,880	3,328,610	.	.	298.7
2017	3,141	3,568,505	.	.	326.9
2018	2,598	3,806,196	.	.	270.3
2019	2,881	3,879,912	.	.	301.2
2020	3,317	3,983,029	.	.	348.9

County: county value. Kansas: state value. County Rank: highest county value ranked #1. (\$000): thousands of dollars. Nonmetro Kansas: Kansas total less Metropolitan Areas as defined by the Office of Management and Budget (OMB; released 3/6/2020). Per 1000: For nonmoney amounts, Per 1000=(county value / county population for the same year as the data) x 1000. \$ Per capita=(county value / county population for the same year as the data). Value= . indicates missing or suppressed data or value not calculated.

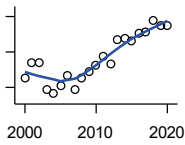
Business

**TOTAL ANNUAL PAYROLL(\$000):
MANUFACTURING**



U.S. Census Bureau, County Business Patterns. Beginning with the 2017 data, any tabulation with fewer than 3 establishments were omitted from the release. Data for these establishments are included in the broader total.

Year	County	State of Kansas	Non Metro Kansas	County Rank	Per 1000 or \$ Per Capita
2000	10,711	7,015,414	.	.	998.8
2001	9,891	7,301,706	.	.	937.1
2002	4,924	6,802,605	.	.	474.7
2003	8,538	6,691,611	.	.	831.3
2004	10,226	6,985,656	.	.	997.4
2005	9,753	7,221,614	.	.	966.9
2006	8,263	7,621,873	.	.	817.2
2007	19,811	7,873,359	.	.	1,974.0
2008	20,665	8,441,541	.	.	2,069.0
2009	17,363	7,477,838	.	.	1,741.2
2010	18,550	7,556,955	.	.	1,858.0
2011	21,087	7,747,934	.	.	2,114.6
2012	20,266	7,704,851	.	.	2,054.1
2013	21,801	8,365,542	.	.	2,199.5
2014	20,682	8,787,306	.	.	2,113.6
2015	23,747	9,052,105	.	.	2,446.1
2016	24,526	8,868,744	.	.	2,543.9
2017	55,947	9,075,793	.	.	5,822.4
2018	56,366	9,481,652	.	.	5,865.3
2019	58,419	10,171,575	.	.	6,108.2
2020	53,799	9,744,825	.	.	5,658.3



**TOTAL ANNUAL PAYROLL(\$000):
WHOLESALE TRADE**

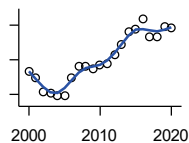
U.S. Census Bureau, County Business Patterns. Beginning with the 2017 data, any tabulation with fewer than 3 establishments were omitted from the release. Data for these establishments are included in the broader total.

Year	County	State of Kansas	Non Metro Kansas	County Rank	Per 1000 or \$ Per Capita
2000	5,111	2,332,755	.	.	476.6
2001	6,782	2,283,169	.	.	642.5
2002	6,720	2,107,653	.	.	647.8
2003	3,703	2,622,701	.	.	360.5
2004	3,267	2,663,196	.	.	318.6
2005	4,194	2,345,990	.	.	415.8
2006	5,381	2,592,211	.	.	532.2
2007	3,826	2,682,542	.	.	381.2
2008	5,096	3,078,655	.	.	510.2
2009	5,844	2,940,949	.	.	586.0
2010	6,533	3,097,628	.	.	654.3
2011	7,504	3,305,811	.	.	752.5
2012	6,627	3,339,997	.	.	671.7
2013	9,354	3,460,512	.	.	943.7
2014	9,493	3,712,075	.	.	970.2
2015	9,192	3,760,189	.	.	946.8
2016	10,183	3,738,207	.	.	1,056.2
2017	10,203	3,822,730	.	.	1,061.8
2018	11,510	3,814,353	.	.	1,197.7
2019	10,940	4,025,802	.	.	1,143.9
2020	11,018	4,224,666	.	.	1,158.8

County: county value. Kansas: state value. County Rank: highest county value ranked #1. (\$000): thousands of dollars. Nonmetro Kansas: Kansas total less Metropolitan Areas as defined by the Office of Management and Budget (OMB; released 3/6/2020). Per 1000: For nonmoney amounts, Per 1000=(county value / county population for the same year as the data) x 1000. \$ Per capita=(county value / county population for the same year as the data). Value= . indicates missing or suppressed data or value not calculated.

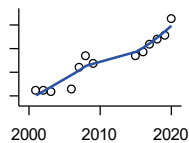
Business

**TOTAL ANNUAL PAYROLL(\$000):
RETAIL TRADE**



U.S. Census Bureau, County Business Patterns. Beginning with the 2017 data, any tabulation with fewer than 3 establishments were omitted from the release. Data for these establishments are included in the broader total.

Year	County	State of Kansas	Non Metro Kansas	County Rank	Per 1000 or \$ Per Capita
2000	6,352	2,747,001	.	.	592.3
2001	5,985	2,813,226	.	.	567.0
2002	5,120	2,854,231	.	.	493.6
2003	5,076	2,773,674	.	.	494.2
2004	4,894	2,847,826	.	.	477.3
2005	4,948	2,952,196	.	.	490.5
2006	5,935	3,126,495	.	.	587.0
2007	6,606	3,201,169	.	.	658.2
2008	6,626	3,261,054	.	.	663.4
2009	6,501	3,232,246	.	.	651.9
2010	6,663	3,321,838	.	.	667.4
2011	6,783	3,384,607	.	.	680.2
2012	7,297	3,409,755	.	.	739.6
2013	7,872	3,483,752	.	.	794.2
2014	8,618	3,617,933	.	.	880.7
2015	8,758	3,712,165	.	.	902.1
2016	9,366	3,826,889	.	.	971.5
2017	8,353	3,797,849	.	.	869.3
2018	8,303	3,818,988	.	.	864.0
2019	8,950	3,908,994	.	.	935.8
2020	8,864	3,984,443	.	.	932.3



**TOTAL ANNUAL PAYROLL(\$000):
TRANSPORTATION &
WAREHOUSING**

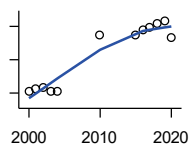
U.S. Census Bureau, County Business Patterns. Beginning with the 2017 data, any tabulation with fewer than 3 establishments were omitted from the release. Data for these establishments are included in the broader total.

Year	County	State of Kansas	Non Metro Kansas	County Rank	Per 1000 or \$ Per Capita
2000	.	1,044,835	.	.	.
2001	465	1,089,405	.	.	44.1
2002	464	1,094,636	.	.	44.7
2003	407	1,316,655	.	.	39.6
2004	.	1,439,800	.	.	.
2005	.	1,393,651	.	.	.
2006	605	1,528,551	.	.	59.8
2007	2,376	1,788,267	.	.	236.7
2008	3,368	1,722,697	.	.	337.2
2009	2,792	1,618,598	.	.	280.0
2010	.	1,735,761	.	.	.
2011	.	1,739,165	.	.	.
2012	.	1,984,976	.	.	.
2013	.	2,006,261	.	.	.
2014	.	2,097,377	.	.	.
2015	3,379	2,190,072	.	.	348.1
2016	3,698	2,202,859	.	.	383.6
2017	4,355	2,546,061	.	.	453.2
2018	4,773	2,663,188	.	.	496.7
2019	5,138	2,879,406	.	.	537.2
2020	6,546	2,962,461	.	.	688.5

County: county value. Kansas: state value. County Rank: highest county value ranked #1. (\$000): thousands of dollars. Nonmetro Kansas: Kansas total less Metropolitan Areas as defined by the Office of Management and Budget (OMB; released 3/6/2020). Per 1000: For nonmoney amounts, Per 1000=(county value / county population for the same year as the data) x 1000. \$ Per capita=(county value / county population for the same year as the data). Value= . indicates missing or suppressed data or value not calculated.

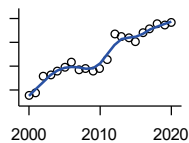
Business

**TOTAL ANNUAL PAYROLL(\$000):
INFORMATION**



U.S. Census Bureau, County Business Patterns. Beginning with the 2017 data, any tabulation with fewer than 3 establishments were omitted from the release. Data for these establishments are included in the broader total.

Year	County	State of Kansas	Non Metro Kansas	County Rank	Per 1000 or \$ Per Capita
2000	1,550	1,923,381	.	.	144.5
2001	1,643	2,218,610	.	.	155.7
2002	1,674	2,298,108	.	.	161.4
2003	1,538	2,378,673	.	.	149.7
2004	1,564	2,392,990	.	.	152.5
2005	.	2,395,081	.	.	.
2006	.	2,586,483	.	.	.
2007	.	2,594,138	.	.	.
2008	.	3,043,244	.	.	.
2009	.	3,045,570	.	.	.
2010	3,247	2,481,580	.	.	325.2
2011	.	2,513,805	.	.	.
2012	.	2,535,555	.	.	.
2013	.	2,805,017	.	.	.
2014	.	2,393,609	.	.	.
2015	3,234	2,406,323	.	.	333.1
2016	3,377	2,080,211	.	.	350.3
2017	3,455	2,090,021	.	.	359.6
2018	3,588	2,341,543	.	.	373.4
2019	3,666	2,133,891	.	.	383.3
2020	3,167	2,245,204	.	.	333.1



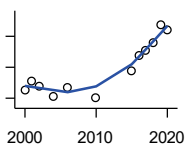
**TOTAL ANNUAL PAYROLL(\$000):
FINANCE & INSURANCE**

U.S. Census Bureau, County Business Patterns. Beginning with the 2017 data, any tabulation with fewer than 3 establishments were omitted from the release. Data for these establishments are included in the broader total.

Year	County	State of Kansas	Non Metro Kansas	County Rank	Per 1000 or \$ Per Capita
2000	3,565	2,083,565	.	.	332.4
2001	3,713	2,129,587	.	.	351.8
2002	5,130	2,414,120	.	.	494.6
2003	5,293	2,608,579	.	.	515.3
2004	5,623	2,676,910	.	.	548.4
2005	5,932	2,786,136	.	.	588.1
2006	6,299	2,928,931	.	.	623.0
2007	5,693	3,096,017	.	.	567.3
2008	5,813	3,322,977	.	.	582.0
2009	5,623	3,206,839	.	.	563.9
2010	5,821	3,211,300	.	.	583.0
2011	6,520	3,404,633	.	.	653.8
2012	8,698	3,611,165	.	.	881.6
2013	8,510	3,896,051	.	.	858.6
2014	8,370	4,044,315	.	.	855.4
2015	8,024	4,113,060	.	.	826.5
2016	8,806	4,180,740	.	.	913.4
2017	9,091	4,258,057	.	.	946.1
2018	9,586	4,682,552	.	.	997.5
2019	9,502	4,814,201	.	.	993.5
2020	9,634	5,288,529	.	.	1,013.3

County: county value. Kansas: state value. County Rank: highest county value ranked #1. (\$000): thousands of dollars. Nonmetro Kansas: Kansas total less Metropolitan Areas as defined by the Office of Management and Budget (OMB; released 3/6/2020). Per 1000: For nonmoney amounts, Per 1000=(county value / county population for the same year as the data) x 1000. \$ Per capita=(county value / county population for the same year as the data). Value= . indicates missing or suppressed data or value not calculated.

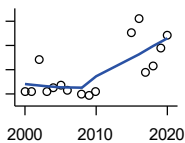
Business



**TOTAL ANNUAL PAYROLL(\$000):
REAL ESTATE, RENTAL, AND
LEASING**

U.S. Census Bureau, County Business Patterns. Beginning with the 2017 data, any tabulation with fewer than 3 establishments were omitted from the release. Data for these establishments are included in the broader total.

Year	County	State of Kansas	Non Metro Kansas	County Rank	Per 1000 or \$ Per Capita
2000	125	360,637	.	.	11.7
2001	157	397,371	.	.	14.9
2002	139	403,695	.	.	13.4
2003	.	437,786	.	.	.
2004	104	430,719	.	.	10.1
2005	.	465,149	.	.	.
2006	133	478,811	.	.	13.2
2007	.	452,969	.	.	.
2008	.	484,149	.	.	.
2009	.	450,884	.	.	.
2010	100	487,255	.	.	10.0
2011	.	535,120	.	.	.
2012	.	531,039	.	.	.
2013	.	538,796	.	.	.
2014	.	542,307	.	.	.
2015	190	595,030	.	.	19.6
2016	240	607,668	.	.	24.9
2017	256	590,373	.	.	26.6
2018	278	600,037	.	.	28.9
2019	336	622,881	.	.	35.1
2020	319	670,656	.	.	33.6



**TOTAL ANNUAL PAYROLL(\$000):
PROFESSIONAL, SCIENTIFIC, AND
TECHNICAL SERVICES**

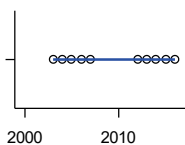
U.S. Census Bureau, County Business Patterns. Beginning with the 2017 data, any tabulation with fewer than 3 establishments were omitted from the release. Data for these establishments are included in the broader total.

Year	County	State of Kansas	Non Metro Kansas	County Rank	Per 1000 or \$ Per Capita
2000	2,086	2,057,313	.	.	194.5
2001	2,073	2,152,937	.	.	196.4
2002	3,435	2,150,085	.	.	331.1
2003	2,089	2,052,712	.	.	203.4
2004	2,237	2,531,457	.	.	218.2
2005	2,372	2,418,500	.	.	235.2
2006	2,143	2,655,690	.	.	211.9
2007	.	2,901,544	.	.	.
2008	1,995	2,903,802	.	.	199.7
2009	1,919	3,071,611	.	.	192.4
2010	2,113	3,037,182	.	.	211.6
2011	.	3,132,082	.	.	.
2012	.	3,455,548	.	.	.
2013	.	3,777,729	.	.	.
2014	.	3,981,580	.	.	.
2015	4,514	4,039,074	.	.	465.0
2016	5,112	4,125,507	.	.	530.2
2017	2,907	4,158,858	.	.	302.5
2018	3,164	4,314,317	.	.	329.2
2019	3,881	4,646,644	.	.	405.8
2020	4,426	4,927,611	.	.	465.5

County: county value. Kansas: state value. County Rank: highest county value ranked #1. (\$000): thousands of dollars. Nonmetro Kansas: Kansas total less Metropolitan Areas as defined by the Office of Management and Budget (OMB; released 3/6/2020). Per 1000: For nonmoney amounts, Per 1000=(county value / county population for the same year as the data) x 1000. \$ Per capita=(county value / county population for the same year as the data). Value= . indicates missing or suppressed data or value not calculated.

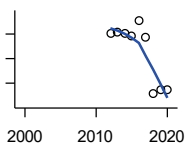
Business

**TOTAL ANNUAL PAYROLL(\$000):
MANAGEMENT OF COMPANIES AND
ENTERPRISES**



U.S. Census Bureau, County Business Patterns. Beginning with the 2017 data, any tabulation with fewer than 3 establishments were omitted from the release. Data for these establishments are included in the broader total.

Year	County	State of Kansas	Non Metro Kansas	County Rank	Per 1000 or \$ Per Capita
2000	.	1,362,735	.	.	.
2001	.	1,279,253	.	.	.
2002	.	1,311,368	.	.	.
2003	0	1,352,119	.	.	0.0
2004	0	1,378,891	.	.	0.0
2005	0	1,510,876	.	.	0.0
2006	0	1,626,320	.	.	0.0
2007	0	2,233,654	.	.	0.0
2008	.	1,848,656	.	.	.
2009	.	1,601,158	.	.	.
2010	.	2,003,048	.	.	.
2011	.	1,677,619	.	.	.
2012	0	1,834,430	.	.	0.0
2013	0	1,938,100	.	.	0.0
2014	0	2,117,232	.	.	0.0
2015	0	2,451,126	.	.	0.0
2016	0	2,167,620	.	.	0.0



**TOTAL ANNUAL PAYROLL(\$000):
ADMIN, SUPPORT, WASTE MGMT.,
AND REMEDIATION**

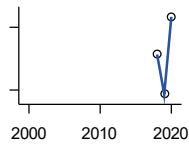
U.S. Census Bureau, County Business Patterns. Beginning with the 2017 data, any tabulation with fewer than 3 establishments were omitted from the release. Data for these establishments are included in the broader total.

Year	County	State of Kansas	Non Metro Kansas	County Rank	Per 1000 or \$ Per Capita
2000	.	1,388,712	.	.	.
2001	.	1,416,480	.	.	.
2002	.	1,378,905	.	.	.
2003	.	1,387,061	.	.	.
2004	.	1,544,442	.	.	.
2005	.	1,694,687	.	.	.
2006	.	1,800,846	.	.	.
2007	.	1,978,025	.	.	.
2008	.	2,096,864	.	.	.
2009	.	1,832,540	.	.	.
2010	.	2,117,325	.	.	.
2011	.	2,114,970	.	.	.
2012	1,009	2,230,250	.	.	102.3
2013	1,011	2,214,320	.	.	102.0
2014	1,009	2,444,170	.	.	103.1
2015	979	2,577,592	.	.	100.8
2016	1,110	2,760,706	.	.	115.1
2017	978	3,026,927	.	.	101.8
2018	513	3,007,347	.	.	53.4
2019	550	3,075,485	.	.	57.5
2020	544	3,250,046	.	.	57.2

County: county value. Kansas: state value. County Rank: highest county value ranked #1. (\$000): thousands of dollars. Nonmetro Kansas: Kansas total less Metropolitan Areas as defined by the Office of Management and Budget (OMB; released 3/6/2020). Per 1000: For nonmoney amounts, Per 1000=(county value / county population for the same year as the data) x 1000. \$ Per capita=(county value / county population for the same year as the data). Value= . indicates missing or suppressed data or value not calculated.

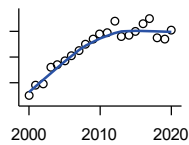
Business

**TOTAL ANNUAL PAYROLL(\$000):
EDUCATIONAL SERVICES**



U.S. Census Bureau, County Business Patterns. Beginning with the 2017 data, any tabulation with fewer than 3 establishments were omitted from the release. Data for these establishments are included in the broader total.

Year	County	State of Kansas	Non Metro Kansas	County Rank	Per 1000 or \$ Per Capita
2000	.	299,843	.	.	.
2001	.	320,606	.	.	.
2002	.	353,531	.	.	.
2003	.	350,814	.	.	.
2004	.	361,644	.	.	.
2005	.	375,781	.	.	.
2006	.	400,565	.	.	.
2007	.	414,233	.	.	.
2008	.	463,210	.	.	.
2009	.	468,856	.	.	.
2010	.	487,670	.	.	.
2011	.	504,964	.	.	.
2012	.	508,448	.	.	.
2013	.	553,995	.	.	.
2014	.	612,073	.	.	.
2015	.	579,794	.	.	.
2018	257	618,864	.	.	26.7
2019	238	654,965	.	.	24.9
2020	275	652,468	.	.	28.9



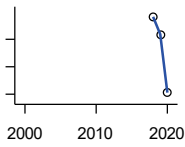
**TOTAL ANNUAL PAYROLL(\$000):
HEALTH CARE AND SOCIAL ASSISTANCE**

U.S. Census Bureau, County Business Patterns. Beginning with the 2017 data, any tabulation with fewer than 3 establishments were omitted from the release. Data for these establishments are included in the broader total.

Year	County	State of Kansas	Non Metro Kansas	County Rank	Per 1000 or \$ Per Capita
2000	12,438	4,120,595	.	.	1,159.8
2001	14,480	4,445,027	.	.	1,371.9
2002	14,887	4,705,220	.	.	1,435.2
2003	17,967	4,939,323	.	.	1,749.3
2004	18,561	5,232,394	.	.	1,810.3
2005	19,158	5,487,089	.	.	1,899.3
2006	20,366	5,814,218	.	.	2,014.2
2007	21,196	6,186,471	.	.	2,112.0
2008	22,508	6,490,627	.	.	2,253.5
2009	23,464	6,749,962	.	.	2,353.0
2010	24,536	6,871,727	.	.	2,457.5
2011	24,849	7,129,655	.	.	2,491.9
2012	26,945	7,614,853	.	.	2,731.1
2013	23,952	7,541,515	.	.	2,416.5
2014	24,206	7,733,621	.	.	2,473.8
2015	24,969	7,969,650	.	.	2,572.0
2016	26,420	8,018,706	.	.	2,740.4
2017	27,498	8,384,998	.	.	2,861.7
2018	23,658	8,637,619	.	.	2,461.8
2019	23,617	8,854,414	.	.	2,469.4
2020	25,123	9,309,269	.	.	2,642.3

County: county value. Kansas: state value. County Rank: highest county value ranked #1. (\$000): thousands of dollars. Nonmetro Kansas: Kansas total less Metropolitan Areas as defined by the Office of Management and Budget (OMB; released 3/6/2020). Per 1000: For nonmoney amounts, Per 1000=(county value / county population for the same year as the data) x 1000. \$ Per capita=(county value / county population for the same year as the data). Value= . indicates missing or suppressed data or value not calculated.

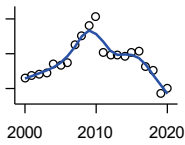
Business



**TOTAL ANNUAL PAYROLL(\$000):
ARTS, ENTERTAINMENT, AND
RECREATION**

U.S. Census Bureau, County Business Patterns. Beginning with the 2017 data, any tabulation with fewer than 3 establishments were omitted from the release. Data for these establishments are included in the broader total.

Year	County	State of Kansas	Non Metro Kansas	County Rank	Per 1000 or \$ Per Capita
2000	.	195,784	.	.	.
2001	.	203,511	.	.	.
2002	.	206,204	.	.	.
2003	.	185,049	.	.	.
2004	.	190,742	.	.	.
2005	.	196,594	.	.	.
2006	.	201,049	.	.	.
2007	.	220,435	.	.	.
2008	.	236,986	.	.	.
2009	.	237,116	.	.	.
2010	.	233,285	.	.	.
2011	.	234,351	.	.	.
2012	.	254,169	.	.	.
2013	.	278,474	.	.	.
2014	.	289,103	.	.	.
2015	.	300,253	.	.	.
2018	11,159	325,454	.	.	1,161.2
2019	10,842	335,362	.	.	1,133.6
2020	9,779	298,119	.	.	1,028.5



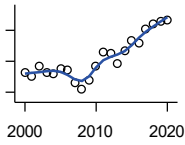
**TOTAL ANNUAL PAYROLL(\$000):
ACCOMMODATION AND FOOD
SERVICES**

U.S. Census Bureau, County Business Patterns. Beginning with the 2017 data, any tabulation with fewer than 3 establishments were omitted from the release. Data for these establishments are included in the broader total.

Year	County	State of Kansas	Non Metro Kansas	County Rank	Per 1000 or \$ Per Capita
2000	2,311	926,831	.	.	215.5
2001	2,366	960,196	.	.	224.2
2002	2,401	930,510	.	.	231.5
2003	2,446	992,313	.	.	238.1
2004	2,713	1,046,901	.	.	264.6
2005	2,683	1,101,854	.	.	266.0
2006	2,738	1,185,280	.	.	270.8
2007	3,273	1,431,100	.	.	326.1
2008	3,523	1,271,594	.	.	352.7
2009	3,798	1,283,065	.	.	380.9
2010	4,069	1,296,556	.	.	407.6
2011	3,019	1,364,281	.	.	302.7
2012	2,960	1,388,337	.	.	300.0
2013	2,969	1,476,335	.	.	299.5
2014	2,929	1,572,021	.	.	299.3
2015	3,025	1,640,144	.	.	311.6
2016	3,059	1,709,193	.	.	317.3
2017	2,634	1,824,791	.	.	274.1
2018	2,537	1,880,364	.	.	264.0
2019	1,846	1,958,603	.	.	193.0
2020	1,992	1,745,238	.	.	209.5

County: county value. Kansas: state value. County Rank: highest county value ranked #1. (\$000): thousands of dollars. Nonmetro Kansas: Kansas total less Metropolitan Areas as defined by the Office of Management and Budget (OMB; released 3/6/2020). Per 1000: For nonmoney amounts, Per 1000=(county value / county population for the same year as the data) x 1000. \$ Per capita=(county value / county population for the same year as the data). Value= . indicates missing or suppressed data or value not calculated.

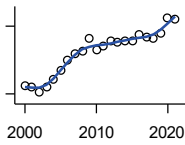
Business



**TOTAL ANNUAL PAYROLL(\$000):
OTHER SERVICES**

U.S. Census Bureau, County Business Patterns. Beginning with the 2017 data, any tabulation with fewer than 3 establishments were omitted from the release. Data for these establishments are included in the broader total.

Year	County	State of Kansas	Non Metro Kansas	County Rank	Per 1000 or \$ Per Capita
2000	1,314	965,540	.	.	122.5
2001	1,246	996,716	.	.	118.0
2002	1,412	1,007,464	.	.	136.1
2003	1,320	979,466	.	.	128.5
2004	1,305	970,383	.	.	127.3
2005	1,388	1,005,537	.	.	137.6
2006	1,360	1,055,932	.	.	134.5
2007	1,151	1,141,551	.	.	114.7
2008	1,055	1,184,016	.	.	105.6
2009	1,192	1,167,154	.	.	119.5
2010	1,414	1,170,201	.	.	141.6
2011	1,647	1,173,775	.	.	165.2
2012	1,621	1,217,210	.	.	164.3
2013	1,461	1,254,933	.	.	147.4
2014	1,661	1,305,563	.	.	169.7
2015	1,836	1,341,075	.	.	189.1
2016	1,789	1,351,375	.	.	185.6
2017	2,019	1,344,179	.	.	210.1
2018	2,110	1,382,801	.	.	219.6
2019	2,153	1,427,711	.	.	225.1
2020	2,172	1,420,859	.	.	228.4



**NOMINAL TAXABLE RETAIL SALES
(million\$)**

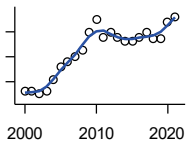
Kansas Department of Revenue

Year	County	State of Kansas	Non Metro Kansas	County Rank	Per 1000 or \$ Per Capita
2000	67.0	30,119.0	8,831.7	44	6.2
2001	66.3	30,202.2	8,700.3	44	6.3
2002	61.4	29,380.8	8,241.5	44	5.9
2003	65.6	30,694.0	8,710.6	45	6.4
2004	73.3	31,922.6	9,062.5	44	7.1
2005	80.3	32,924.2	9,386.6	42	8.0
2006	89.9	34,937.6	10,042.1	40	8.9
2007	95.6	36,180.1	10,553.2	39	9.5
2008	98.2	37,559.5	11,126.9	39	9.8
2009	108.9	35,211.8	10,351.5	37	10.9
2010	99.0	35,655.7	10,606.1	38	9.9
2011	102.3	37,257.0	11,153.5	39	10.3
2012	106.5	38,988.8	11,749.1	43	10.8
2013	106.3	40,009.0	11,993.8	43	10.7
2014	107.1	41,299.0	12,365.4	41	10.9
2015	107.1	41,635.8	11,747.6	40	11.0
2016	112.6	42,040.2	11,523.5	39	11.7
2017	110.4	41,940.1	11,449.9	39	11.5
2018	109.2	42,732.3	11,643.9	40	11.4
2019	113.3	43,732.5	12,062.7	41	11.8
2020	127.5	43,689.9	12,331.7	40	13.4
2021	126.4	48,532.8	13,413.0	41	13.4

County: county value. Kansas: state value. County Rank: highest county value ranked #1. (\$000): thousands of dollars. Nonmetro Kansas: Kansas total less Metropolitan Areas as defined by the Office of Management and Budget (OMB; released 3/6/2020). Per 1000: For nonmoney amounts, Per 1000=(county value / county population for the same year as the data) x 1000. \$ Per capita=(county value / county population for the same year as the data). Value= . indicates missing or suppressed data or value not calculated.

Business

RETAIL PULL FACTOR



Kansas Direct Program, Kansas State University Cooperative Extension Service (1980-1999); Kansas Department of Revenue (2000-)

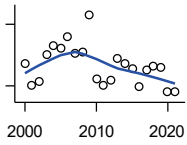
Year	County	State of Kansas	Non Metro Kansas	County Rank	Per 1000 or \$ Per Capita
2000	0.56	.	.	63	.
2001	0.56	.	.	61	.
2002	0.55	.	.	62	.
2003	0.56	.	.	65	.
2004	0.61	.	.	59	.
2005	0.66	.	.	54	.
2006	0.68	.	.	53	.
2007	0.70	.	.	52	.
2008	0.73	.	.	50	.
2009	0.80	.	.	46	.
2010	0.85	.	.	39	.
2011	0.78	.	.	47	.
2012	0.80	.	.	50	.
2013	0.78	.	.	52	.
2014	0.76	.	.	52	.
2015	0.76	.	.	56	.
2016	0.78	.	.	43	.
2017	0.80	.	.	37	.
2018	0.77	.	.	42	.
2019	0.77	.	.	48	.
2020	0.84	.	.	34	.
2021	0.86	.	.	30	.

County: county value. Kansas: state value. County Rank: highest county value ranked #1. (\$000): thousands of dollars. Nonmetro Kansas: Kansas total less Metropolitan Areas as defined by the Office of Management and Budget (OMB; released 3/6/2020). Per 1000: For nonmoney amounts, Per 1000=(county value / county population for the same year as the data) x 1000. \$ Per capita=(county value / county population for the same year as the data). Value= . indicates missing or suppressed data or value not calculated.

Employment

CIVILIAN LABOR FORCE (BLS-Place of Residence; 1990-)

U.S. Department of Labor, Bureau of Labor Statistics (BLS)



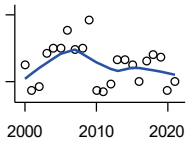
Year	County	State of Kansas	Non Metro Kansas	County Rank	Per 1000 or \$ Per Capita
2000	5,420	1,402,606	482,229	39	505.4
2001	5,202	1,398,521	475,280	40	492.8
2002	5,239	1,419,335	482,428	42	505.1
2003	5,501	1,441,065	490,161	40	535.6
2004	5,587	1,458,910	494,509	40	544.9
2005	5,573	1,458,767	490,047	40	552.5
2006	5,678	1,467,553	498,594	40	561.6
2007	5,516	1,485,414	497,048	44	549.6
2008	5,535	1,493,365	504,522	43	554.2
2009	5,892	1,512,572	516,311	42	590.9
2010	5,267	1,500,463	492,594	42	527.5
2011	5,211	1,498,000	492,563	42	522.6
2012	5,256	1,490,808	489,349	42	532.7
2013	5,467	1,489,395	485,484	40	551.6
2014	5,416	1,494,203	481,813	42	553.5
2015	5,370	1,493,782	477,546	41	553.2
2016	5,189	1,491,961	468,258	41	538.2
2017	5,360	1,488,346	461,063	41	557.8
2018	5,397	1,488,027	456,866	40	561.6
2019	5,384	1,497,517	455,858	40	562.9
2020	5,138	1,493,706	452,935	40	540.4
2021	5,143	1,495,665	453,398	41	543.9

County: county value. Kansas: state value. County Rank: highest county value ranked #1. (\$000): thousands of dollars. Nonmetro Kansas: Kansas total less Metropolitan Areas as defined by the Office of Management and Budget (OMB; released 3/6/2020). Per 1000: For nonmoney amounts, Per 1000=(county value / county population for the same year as the data) x 1000. \$ Per capita=(county value / county population for the same year as the data). Value= . indicates missing or suppressed data or value not calculated.

Employment

EMPLOYED (BLS-Place of Residence; 1990-)

U.S. Department of Labor, Bureau of Labor Statistics (BLS)



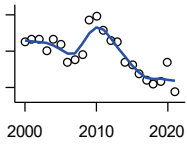
Year	County	State of Kansas	Non Metro Kansas	County Rank	Per 1000 or \$ Per Capita
2000	5,146	1,349,841	464,962	39	479.9
2001	4,918	1,338,775	455,154	41	465.9
2002	4,956	1,347,163	461,241	42	477.8
2003	5,249	1,361,115	467,622	41	511.1
2004	5,304	1,378,355	470,330	40	517.3
2005	5,303	1,384,654	467,722	40	525.7
2006	5,458	1,402,950	479,174	40	539.8
2007	5,288	1,422,109	477,983	44	526.9
2008	5,295	1,425,022	484,056	43	530.1
2009	5,558	1,408,142	485,797	42	557.4
2010	4,922	1,396,172	461,635	42	493.0
2011	4,905	1,402,198	463,723	42	491.9
2012	4,975	1,405,638	463,376	42	504.3
2013	5,193	1,410,470	461,405	42	523.9
2014	5,196	1,426,892	461,797	42	531.0
2015	5,156	1,431,533	457,899	41	531.1
2016	5,001	1,431,920	449,356	41	518.7
2017	5,189	1,434,516	445,003	41	540.0
2018	5,237	1,439,329	442,716	40	545.0
2019	5,217	1,450,705	442,108	40	545.5
2020	4,917	1,408,965	433,229	40	517.1
2021	5,006	1,447,323	441,159	41	529.5

County: county value. Kansas: state value. County Rank: highest county value ranked #1. (\$000): thousands of dollars. Nonmetro Kansas: Kansas total less Metropolitan Areas as defined by the Office of Management and Budget (OMB; released 3/6/2020). Per 1000: For nonmoney amounts, Per 1000=(county value / county population for the same year as the data) x 1000. \$ Per capita=(county value / county population for the same year as the data). Value= . indicates missing or suppressed data or value not calculated.

Employment

UNEMPLOYED (BLS-Place of Residence; 1990-)

U.S. Department of Labor, Bureau of Labor Statistics (BLS)

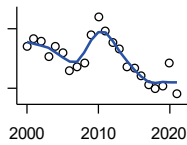


Year	County	State of Kansas	Non Metro Kansas	County Rank	Per 1000 or \$ Per Capita
2000	274	52,765	17,267	37	25.6
2001	284	59,746	20,126	39	26.9
2002	283	72,172	21,187	40	27.3
2003	252	79,950	22,539	42	24.5
2004	283	80,555	24,179	40	27.6
2005	270	74,113	22,325	41	26.8
2006	220	64,603	19,420	42	21.8
2007	228	63,305	19,065	40	22.7
2008	240	68,343	20,466	42	24.0
2009	334	104,430	30,514	43	33.5
2010	345	104,291	30,959	43	34.6
2011	306	95,802	28,840	43	30.7
2012	281	85,170	25,973	42	28.5
2013	274	78,925	24,079	41	27.6
2014	220	67,311	20,016	41	22.5
2015	214	62,249	19,647	42	22.0
2016	188	60,041	18,902	43	19.5
2017	171	53,830	16,060	42	17.8
2018	160	48,698	14,150	41	16.6
2019	167	46,812	13,750	40	17.5
2020	221	84,741	19,706	40	23.2
2021	137	48,342	12,239	40	14.5

County: county value. Kansas: state value. County Rank: highest county value ranked #1. (\$000): thousands of dollars. Nonmetro Kansas: Kansas total less Metropolitan Areas as defined by the Office of Management and Budget (OMB; released 3/6/2020). Per 1000: For nonmoney amounts, Per 1000=(county value / county population for the same year as the data) x 1000. \$ Per capita=(county value / county population for the same year as the data). Value= . indicates missing or suppressed data or value not calculated.

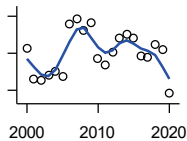
Employment

UNEMPLOYMENT RATE (BLS-Place of Residence; 1990-)



U.S. Department of Labor, Bureau of Labor Statistics (BLS)

Year	County	State of Kansas	Non Metro Kansas	County Rank	Per 1000 or \$ Per Capita
2000	5.1	3.8	3.6	4	.
2001	5.5	4.3	4.2	12	.
2002	5.4	5.1	4.4	22	.
2003	4.6	5.5	4.6	41	.
2004	5.1	5.5	4.9	33	.
2005	4.8	5.1	4.6	32	.
2006	3.9	4.4	3.9	39	.
2007	4.1	4.3	3.8	34	.
2008	4.3	4.6	4.1	38	.
2009	5.7	6.9	5.9	44	.
2010	6.6	7.0	6.3	34	.
2011	5.9	6.4	5.9	39	.
2012	5.3	5.7	5.3	41	.
2013	5.0	5.3	5.0	40	.
2014	4.1	4.5	4.2	44	.
2015	4.0	4.2	4.1	45	.
2016	3.6	4.0	4.0	60	.
2017	3.2	3.6	3.5	58	.
2018	3.0	3.3	3.1	48	.
2019	3.1	3.1	3.0	38	.
2020	4.3	5.7	4.4	44	.
2021	2.7	3.2	2.7	44	.



BEA EMPLOYMENT: TOTAL (Place of Work)

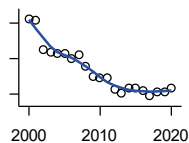
U.S. Bureau of Economic Analysis, Regional Economic Information System (REIS)

Year	County	State of Kansas	Non Metro Kansas	County Rank	Per 1000 or \$ Per Capita
2000	7,047	1,760,312	604,361	37	657.1
2001	6,726	1,767,601	592,672	36	637.2
2002	6,703	1,746,077	585,387	37	646.2
2003	6,764	1,733,694	577,860	37	658.6
2004	6,803	1,750,876	578,750	37	663.5
2005	6,754	1,765,650	577,562	37	669.6
2006	7,310	1,795,507	583,041	35	723.0
2007	7,376	1,844,355	591,924	35	735.0
2008	7,241	1,858,069	594,368	35	725.0
2009	7,327	1,813,184	580,972	35	734.8
2010	6,947	1,801,873	579,758	36	695.8
2011	6,880	1,819,044	583,725	37	689.9
2012	7,017	1,841,393	591,748	37	711.2
2013	7,160	1,869,054	597,236	37	722.4
2014	7,209	1,895,859	601,291	37	736.7
2015	7,157	1,910,954	598,589	37	737.2
2016	6,967	1,916,152	592,580	38	722.6
2017	6,962	1,914,179	584,337	37	724.5
2018	7,099	1,926,242	580,213	36	738.7
2019	7,035	1,925,204	574,496	36	735.6
2020	6,564	1,851,247	556,671	38	690.4

County: county value. Kansas: state value. County Rank: highest county value ranked #1. (\$000): thousands of dollars. Nonmetro Kansas: Kansas total less Metropolitan Areas as defined by the Office of Management and Budget (OMB; released 3/6/2020). Per 1000: For nonmoney amounts, Per 1000=(county value / county population for the same year as the data) x 1000. \$ Per capita=(county value / county population for the same year as the data). Value= . indicates missing or suppressed data or value not calculated.

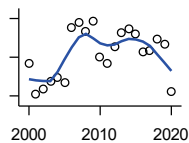
Employment

BEA EMPLOYMENT: FARM



U.S. Bureau of Economic Analysis,
Regional Economic Information System
(REIS)

Year	County	State of Kansas	Non Metro Kansas	County Rank	Per 1000 or \$ Per Capita
2000	712	77,477	59,088	41	66.4
2001	709	78,177	59,647	42	67.2
2002	626	70,532	53,893	45	60.3
2003	618	68,516	52,099	43	60.2
2004	614	67,586	51,246	43	59.9
2005	613	66,829	50,386	44	60.8
2006	599	64,910	48,728	44	59.2
2007	611	65,639	49,037	44	60.9
2008	577	63,820	47,682	44	57.8
2009	551	62,798	46,960	45	55.3
2010	546	63,882	47,984	49	54.7
2011	546	65,761	49,707	54	54.8
2012	512	63,753	48,167	56	51.9
2013	502	62,739	47,255	56	50.6
2014	516	64,308	48,722	57	52.7
2015	516	64,416	48,927	57	53.2
2016	511	63,840	48,539	58	53.0
2017	494	61,876	46,936	57	51.4
2018	507	63,233	48,069	58	52.8
2019	506	63,300	48,167	58	52.9
2020	516	64,281	49,038	57	54.3



BEA EMPLOYMENT: NON-FARM

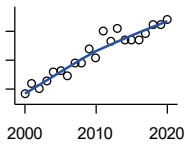
U.S. Bureau of Economic Analysis,
Regional Economic Information System
(REIS)

Year	County	State of Kansas	Non Metro Kansas	County Rank	Per 1000 or \$ Per Capita
2000	6,335	1,682,835	545,273	36	590.7
2001	6,017	1,689,424	533,025	35	570.1
2002	6,077	1,675,545	531,494	35	585.8
2003	6,146	1,665,178	525,761	35	598.4
2004	6,189	1,683,290	527,504	35	603.6
2005	6,141	1,698,821	527,176	36	608.8
2006	6,711	1,730,597	534,313	34	663.7
2007	6,765	1,778,716	542,887	35	674.1
2008	6,664	1,794,249	546,686	35	667.2
2009	6,776	1,750,386	534,012	34	679.5
2010	6,401	1,737,991	531,774	35	641.1
2011	6,334	1,753,283	534,018	36	635.2
2012	6,505	1,777,640	543,581	36	659.3
2013	6,658	1,806,315	549,981	36	671.7
2014	6,693	1,831,551	552,569	36	684.0
2015	6,641	1,846,538	549,662	37	684.1
2016	6,456	1,852,312	544,041	37	669.6
2017	6,468	1,852,303	537,401	36	673.1
2018	6,592	1,863,009	532,144	35	686.0
2019	6,529	1,861,904	526,329	34	682.7
2020	6,048	1,786,966	507,633	37	636.1

County: county value. Kansas: state value. County Rank: highest county value ranked #1. (\$000): thousands of dollars. Nonmetro Kansas: Kansas total less Metropolitan Areas as defined by the Office of Management and Budget (OMB; released 3/6/2020). Per 1000: For nonmoney amounts, Per 1000=(county value / county population for the same year as the data) x 1000. \$ Per capita=(county value / county population for the same year as the data). Value= . indicates missing or suppressed data or value not calculated.

Employment

AVERAGE WAGE PER JOB (\$)



U.S. Bureau of Economic Analysis,
Regional Economic Information System
(REIS)

Year	County	State of Kansas	Non Metro Kansas	County Rank	Per 1000 or \$ Per Capita
2000	23,229	31,854	24,396	46	.
2001	26,781	32,859	26,379	37	.
2002	24,982	33,707	26,331	46	.
2003	27,845	35,078	28,911	48	.
2004	30,824	35,932	29,747	27	.
2005	31,170	37,467	31,646	40	.
2006	29,588	40,038	31,993	54	.
2007	34,110	41,500	33,484	32	.
2008	33,996	44,197	36,256	56	.
2009	38,938	43,860	35,739	24	.
2010	35,863	45,370	38,631	58	.
2011	44,907	48,280	42,324	37	.
2012	41,465	50,549	42,015	45	.
2013	45,940	52,629	46,073	48	.
2014	41,978	51,959	43,562	48	.
2015	41,868	52,250	42,320	39	.
2016	41,891	51,664	41,964	39	.
2017	44,174	53,007	42,137	32	.
2018	47,344	54,790	44,514	30	.
2019	47,245	56,956	45,336	31	.
2020	49,267	60,597	49,183	38	.

BEA EMPLOYMENT: FORESTRY, FISHING, HUNTING, AND AG SUPPORT

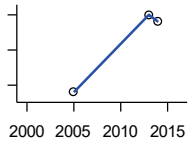
U.S. Bureau of Economic Analysis,
Regional Economic Information System
(REIS)

Year	County	State of Kansas	Non Metro Kansas	County Rank	Per 1000 or \$ Per Capita
2001	.	7,059	.	.	.
2002	.	8,045	.	.	.
2003	.	7,313	.	.	.
2004	.	7,623	.	.	.
2005	.	7,962	.	.	.
2006	.	7,748	.	.	.
2007	.	8,228	.	.	.
2008	.	8,646	.	.	.
2009	.	8,982	.	.	.
2010	.	9,251	.	.	.
2011	.	9,410	.	.	.
2012	.	9,691	.	.	.
2013	.	10,014	.	.	.
2014	.	10,708	.	.	.
2015	.	10,020	.	.	.
2016	.	10,383	.	.	.

County: county value. Kansas: state value. County Rank: highest county value ranked #1. (\$000): thousands of dollars. Nonmetro Kansas: Kansas total less Metropolitan Areas as defined by the Office of Management and Budget (OMB; released 3/6/2020). Per 1000: For nonmoney amounts, Per 1000=(county value / county population for the same year as the data) x 1000. \$ Per capita=(county value / county population for the same year as the data). Value= . indicates missing or suppressed data or value not calculated.

Employment

BEA EMPLOYMENT: MINING



U.S. Bureau of Economic Analysis,
Regional Economic Information System
(REIS)

Year	County	State of Kansas	Non Metro Kansas	County Rank	Per 1000 or \$ Per Capita
2001	.	19,592	.	.	.
2002	.	17,635	.	.	.
2003	.	19,869	.	.	.
2004	.	18,466	.	.	.
2005	23	19,489	.	48	.
2006	.	22,403	.	.	.
2007	.	24,043	.	.	.
2008	.	31,467	.	.	.
2009	.	29,941	.	.	.
2010	.	36,124	.	.	.
2011	.	31,658	.	.	.
2012	.	42,405	.	.	.
2013	45	46,585	.	50	.
2014	43	45,526	.	56	.
2015	.	46,460	.	.	.
2016	.	48,555	.	.	.

BEA EMPLOYMENT: UTILITIES

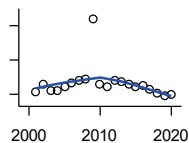
U.S. Bureau of Economic Analysis,
Regional Economic Information System
(REIS)

Year	County	State of Kansas	Non Metro Kansas	County Rank	Per 1000 or \$ Per Capita
2001	.	7,608	.	.	.
2002	.	7,087	.	.	.
2003	.	7,253	.	.	.
2004	.	7,356	.	.	.
2005	.	7,447	.	.	.
2006	.	7,478	.	.	.
2007	.	7,584	.	.	.
2008	.	7,855	.	.	.
2009	.	7,941	.	.	.
2010	.	8,028	.	.	.
2011	.	8,213	.	.	.
2012	.	8,155	.	.	.
2013	.	7,949	.	.	.
2014	.	7,985	.	.	.
2015	.	7,040	.	.	.
2016	.	7,133	.	.	.

County: county value. Kansas: state value. County Rank: highest county value ranked #1. (\$000): thousands of dollars. Nonmetro Kansas: Kansas total less Metropolitan Areas as defined by the Office of Management and Budget (OMB; released 3/6/2020). Per 1000: For nonmoney amounts, Per 1000=(county value / county population for the same year as the data) x 1000. \$ Per capita=(county value / county population for the same year as the data). Value= . indicates missing or suppressed data or value not calculated.

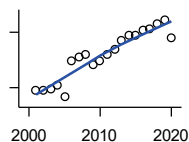
Employment

**BEA EMPLOYMENT:
CONSTRUCTION**



U.S. Bureau of Economic Analysis,
Regional Economic Information System
(REIS)

Year	County	State of Kansas	Non Metro Kansas	County Rank	Per 1000 or \$ Per Capita
2001	217	92,647	27,972	52	.
2002	257	90,370	.	46	.
2003	220	91,725	26,681	50	.
2004	224	93,271	.	47	.
2005	243	94,836	.	45	.
2006	263	97,449	.	45	.
2007	279	99,119	29,179	46	.
2008	291	97,741	.	47	.
2009	640	90,165	28,077	28	.
2010	258	84,708	26,402	48	.
2011	242	83,332	25,999	51	.
2012	278	85,966	.	47	.
2013	276	88,094	.	49	.
2014	262	91,143	.	52	.
2015	244	91,458	27,583	50	.
2016	249	93,539	27,151	50	.
2017	226	92,046	25,579	51	.
2018	207	92,985	25,530	52	.
2019	192	94,858	25,701	56	.
2020	197	94,186	26,085	55	.



**BEA EMPLOYMENT:
MANUFACTURING**

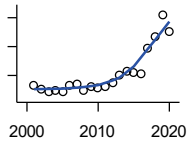
U.S. Bureau of Economic Analysis,
Regional Economic Information System
(REIS)

Year	County	State of Kansas	Non Metro Kansas	County Rank	Per 1000 or \$ Per Capita
2001	573	199,980	73,170	37	.
2002	573	188,905	70,691	35	.
2003	589	179,013	68,418	34	.
2004	627	181,738	69,669	35	.
2005	497	185,459	71,072	37	.
2006	893	188,047	71,704	32	.
2007	934	192,930	73,488	32	.
2008	964	193,116	72,235	33	.
2009	844	173,854	64,961	31	.
2010	886	166,000	62,884	31	.
2011	959	167,302	64,361	30	.
2012	1,013	169,308	65,944	32	.
2013	1,107	170,113	67,251	29	.
2014	1,166	169,307	68,299	26	.
2015	1,173	168,324	66,978	26	.
2016	1,220	167,723	65,796	25	.
2017	1,241	168,438	66,795	24	.
2018	1,294	171,778	68,181	26	.
2019	1,335	173,605	67,879	24	.
2020	1,134	165,228	65,658	27	.

County: county value. Kansas: state value. County Rank: highest county value ranked #1. (\$000): thousands of dollars. Nonmetro Kansas: Kansas total less Metropolitan Areas as defined by the Office of Management and Budget (OMB; released 3/6/2020). Per 1000: For nonmoney amounts, Per 1000=(county value / county population for the same year as the data) x 1000. \$ Per capita=(county value / county population for the same year as the data). Value= . indicates missing or suppressed data or value not calculated.

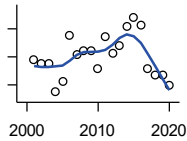
Employment

BEA EMPLOYMENT: WHOLESALE TRADE



U.S. Bureau of Economic Analysis,
Regional Economic Information System
(REIS)

Year	County	State of Kansas	Non Metro Kansas	County Rank	Per 1000 or \$ Per Capita
2001	165	65,698	.	44	.
2002	153	65,408	.	41	.
2003	142	63,504	.	41	.
2004	147	64,434	.	42	.
2005	143	64,587	.	41	.
2006	168	64,743	.	39	.
2007	170	65,993	.	38	.
2008	150	67,693	.	39	.
2009	162	65,954	.	38	.
2010	159	64,376	.	39	.
2011	161	64,712	.	42	.
2012	175	63,973	.	37	.
2013	201	64,999	.	34	.
2014	214	69,295	.	33	.
2015	212	68,444	.	34	.
2016	205	64,843	.	34	.
2017	293	65,014	.	26	.
2018	335	64,745	.	19	.
2019	410	63,324	.	15	.
2020	354	60,844	.	19	.



BEA EMPLOYMENT: RETAIL TRADE

U.S. Bureau of Economic Analysis,
Regional Economic Information System
(REIS)

Year	County	State of Kansas	Non Metro Kansas	County Rank	Per 1000 or \$ Per Capita
2001	571	198,069	.	45	.
2002	564	196,112	.	45	.
2003	562	194,545	64,173	47	.
2004	512	192,957	63,265	47	.
2005	531	191,656	62,506	47	.
2006	614	190,391	62,082	45	.
2007	580	190,643	61,716	44	.
2008	587	185,907	59,783	44	.
2009	587	181,262	58,714	42	.
2010	555	177,858	57,470	45	.
2011	611	180,548	57,734	42	.
2012	582	180,596	57,349	43	.
2013	594	183,245	57,556	41	.
2014	630	185,899	57,855	40	.
2015	645	188,421	58,516	40	.
2016	632	188,505	57,864	40	.
2017	553	186,633	56,715	44	.
2018	543	183,323	.	45	.
2019	542	177,240	53,427	43	.
2020	524	171,777	52,563	45	.

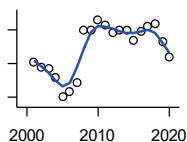
County: county value. Kansas: state value. County Rank: highest county value ranked #1. (\$000): thousands of dollars. Nonmetro Kansas: Kansas total less Metropolitan Areas as defined by the Office of Management and Budget (OMB; released 3/6/2020). Per 1000: For nonmoney amounts, Per 1000=(county value / county population for the same year as the data) x 1000. \$ Per capita=(county value / county population for the same year as the data). Value= . indicates missing or suppressed data or value not calculated.

Employment

**BEA EMPLOYMENT:
TRANSPORTATION AND
WAREHOUSING**

U.S. Bureau of Economic Analysis,
Regional Economic Information System
(REIS)

Year	County	State of Kansas	Non Metro Kansas	County Rank	Per 1000 or \$ Per Capita
2001	.	56,302	.	.	.
2002	.	55,319	.	.	.
2003	.	55,509	.	.	.
2004	.	55,479	.	.	.
2005	.	56,287	.	.	.
2006	.	57,506	.	.	.
2007	.	59,277	.	.	.
2008	.	58,725	.	.	.
2009	.	56,238	.	.	.
2010	.	55,179	.	.	.
2011	.	57,449	.	.	.
2012	.	59,756	.	.	.
2013	.	59,780	.	.	.
2014	.	60,565	.	.	.
2015	.	63,256	.	.	.
2016	.	65,705	.	.	.



BEA EMPLOYMENT: INFORMATION

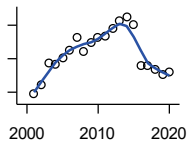
U.S. Bureau of Economic Analysis,
Regional Economic Information System
(REIS)

Year	County	State of Kansas	Non Metro Kansas	County Rank	Per 1000 or \$ Per Capita
2001	81	54,895	.	35	.
2002	78	50,728	.	31	.
2003	77	48,328	6,860	34	.
2004	72	45,617	.	36	.
2005	60	43,840	.	40	.
2006	63	43,925	.	35	.
2007	69	45,115	.	34	.
2008	100	42,958	.	31	.
2009	100	38,677	.	31	.
2010	106	33,432	.	29	.
2011	103	32,160	.	28	.
2012	98	31,829	.	27	.
2013	100	31,737	.	27	.
2014	100	32,316	.	28	.
2015	94	25,282	.	28	.
2016	99	24,998	.	28	.
2017	102	24,004	.	22	.
2018	104	23,165	.	21	.
2019	93	22,078	.	22	.
2020	84	20,810	.	23	.

County: county value. Kansas: state value. County Rank: highest county value ranked #1. (\$000): thousands of dollars. Nonmetro Kansas: Kansas total less Metropolitan Areas as defined by the Office of Management and Budget (OMB; released 3/6/2020). Per 1000: For nonmoney amounts, Per 1000=(county value / county population for the same year as the data) x 1000. \$ Per capita=(county value / county population for the same year as the data). Value= . indicates missing or suppressed data or value not calculated.

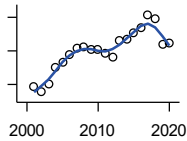
Employment

BEA EMPLOYMENT: FINANCE AND INSURANCE



U.S. Bureau of Economic Analysis,
Regional Economic Information System
(REIS)

Year	County	State of Kansas	Non Metro Kansas	County Rank	Per 1000 or \$ Per Capita
2001	194	76,118	.	43	.
2002	221	78,206	.	39	.
2003	289	78,441	.	31	.
2004	285	78,350	.	31	.
2005	304	78,952	.	29	.
2006	326	80,900	.	30	.
2007	364	86,094	.	26	.
2008	321	89,590	.	29	.
2009	349	93,573	.	29	.
2010	363	92,428	.	29	.
2011	369	99,495	.	29	.
2012	390	98,640	.	28	.
2013	412	99,998	.	27	.
2014	425	98,209	.	25	.
2015	401	100,534	.	27	.
2016	279	102,699	.	34	.
2017	281	101,563	.	33	.
2018	267	102,816	.	35	.
2019	253	100,276	.	35	.
2020	259	101,626	.	35	.



BEA EMPLOYMENT: REAL ESTATE, RENTAL, AND LEASING

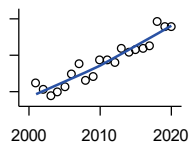
U.S. Bureau of Economic Analysis,
Regional Economic Information System
(REIS)

Year	County	State of Kansas	Non Metro Kansas	County Rank	Per 1000 or \$ Per Capita
2001	77	45,237	.	42	.
2002	71	44,970	.	46	.
2003	81	47,095	.	44	.
2004	101	50,181	.	43	.
2005	107	53,335	.	41	.
2006	116	55,342	.	40	.
2007	123	57,694	.	41	.
2008	124	57,933	.	38	.
2009	122	57,132	.	40	.
2010	122	59,578	.	42	.
2011	117	61,821	.	42	.
2012	113	60,432	.	43	.
2013	133	62,134	.	39	.
2014	134	64,705	.	41	.
2015	141	66,604	.	39	.
2016	148	68,395	.	39	.
2017	163	70,304	.	40	.
2018	159	72,631	.	40	.
2019	128	69,119	.	43	.
2020	129	68,452	.	43	.

County: county value. Kansas: state value. County Rank: highest county value ranked #1. (\$000): thousands of dollars. Nonmetro Kansas: Kansas total less Metropolitan Areas as defined by the Office of Management and Budget (OMB; released 3/6/2020). Per 1000: For nonmoney amounts, Per 1000=(county value / county population for the same year as the data) x 1000. \$ Per capita=(county value / county population for the same year as the data). Value= . indicates missing or suppressed data or value not calculated.

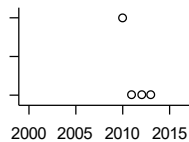
Employment

BEA EMPLOYMENT: PROFESSIONAL AND TECHNICAL SERVICES



U.S. Bureau of Economic Analysis,
Regional Economic Information System
(REIS)

Year	County	State of Kansas	Non Metro Kansas	County Rank	Per 1000 or \$ Per Capita
2001	130	81,396	.	40	.
2002	122	80,684	.	38	.
2003	115	80,311	.	36	.
2004	120	85,550	.	38	.
2005	125	85,003	.	38	.
2006	139	87,381	.	35	.
2007	150	92,717	.	36	.
2008	132	95,362	.	42	.
2009	136	93,232	.	39	.
2010	155	93,037	.	37	.
2011	155	93,237	.	38	.
2012	152	95,360	.	38	.
2013	167	100,795	.	39	.
2014	163	102,210	.	39	.
2015	166	105,625	.	38	.
2016	168	108,059	.	35	.
2017	171	109,041	.	35	.
2018	197	110,513	.	31	.
2019	192	109,637	.	34	.
2020	191	108,634	.	33	.



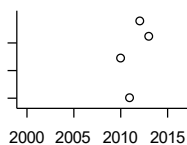
BEA EMPLOYMENT: MANAGEMENT OF COMPANIES AND ENTERPRISES

U.S. Bureau of Economic Analysis,
Regional Economic Information System
(REIS)

Year	County	State of Kansas	Non Metro Kansas	County Rank	Per 1000 or \$ Per Capita
2001	.	13,832	.	.	.
2002	.	12,576	.	.	.
2003	.	11,135	.	.	.
2004	.	10,614	.	.	.
2005	.	11,811	.	.	.
2006	.	13,061	.	.	.
2007	.	13,398	.	.	.
2008	.	15,234	.	.	.
2009	.	14,849	.	.	.
2010	7	16,579	.	28	.
2011	3	15,343	.	30	.
2012	3	15,075	.	34	.
2013	3	16,667	.	32	.
2014	.	20,441	.	.	.
2015	.	29,604	.	.	.
2016	.	27,824	.	.	.

County: county value. Kansas: state value. County Rank: highest county value ranked #1. (\$000): thousands of dollars. Nonmetro Kansas: Kansas total less Metropolitan Areas as defined by the Office of Management and Budget (OMB; released 3/6/2020). Per 1000: For nonmoney amounts, Per 1000=(county value / county population for the same year as the data) x 1000. \$ Per capita=(county value / county population for the same year as the data). Value= . indicates missing or suppressed data or value not calculated.

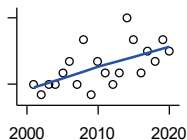
Employment



**BEA EMPLOYMENT:
ADMINISTRATIVE AND WASTE
SERVICES**

U.S. Bureau of Economic Analysis,
Regional Economic Information System
(REIS)

Year	County	State of Kansas	Non Metro Kansas	County Rank	Per 1000 or \$ Per Capita
2001	.	81,573	.	.	.
2002	.	82,992	.	.	.
2003	.	81,298	.	.	.
2004	.	85,721	.	.	.
2005	.	89,933	.	.	.
2006	.	93,688	.	.	.
2007	.	98,865	.	.	.
2008	.	97,440	.	.	.
2009	.	92,455	.	.	.
2010	139	93,675	.	37	.
2011	110	97,969	.	44	.
2012	166	100,490	.	37	.
2013	155	104,680	.	39	.
2014	.	107,218	18,836	.	.
2015	.	103,436	18,767	.	.
2016	.	103,233	18,428	.	.



**BEA EMPLOYMENT: EDUCATIONAL
SERVICES**

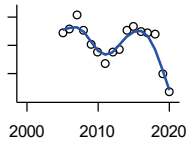
U.S. Bureau of Economic Analysis,
Regional Economic Information System
(REIS)

Year	County	State of Kansas	Non Metro Kansas	County Rank	Per 1000 or \$ Per Capita
2001	8	21,169	.	41	.
2002	7	22,173	.	51	.
2003	8	22,651	.	44	.
2004	8	21,601	.	47	.
2005	9	22,177	.	48	.
2006	10	22,438	.	35	.
2007	8	23,647	.	44	.
2008	12	24,653	.	31	.
2009	7	25,120	.	46	.
2010	10	26,071	.	35	.
2011	9	26,080	.	34	.
2012	8	26,625	.	43	.
2013	9	27,508	.	46	.
2014	14	28,708	.	35	.
2015	12	28,794	.	38	.
2016	9	27,996	.	45	.
2017	11	28,459	.	29	.
2018	10	28,560	.	40	.
2019	12	29,586	.	37	.
2020	11	27,508	.	36	.

County: county value. Kansas: state value. County Rank: highest county value ranked #1. (\$000): thousands of dollars. Nonmetro Kansas: Kansas total less Metropolitan Areas as defined by the Office of Management and Budget (OMB; released 3/6/2020). Per 1000: For nonmoney amounts, Per 1000=(county value / county population for the same year as the data) x 1000. \$ Per capita=(county value / county population for the same year as the data). Value= . indicates missing or suppressed data or value not calculated.

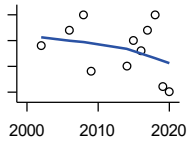
Employment

BEA EMPLOYMENT: HEALTH CARE AND SOCIAL ASSISTANCE



U.S. Bureau of Economic Analysis, Regional Economic Information System (REIS)

Year	County	State of Kansas	Non Metro Kansas	County Rank	Per 1000 or \$ Per Capita
2001	.	165,415	.	.	.
2002	.	168,198	.	.	.
2003	.	169,654	.	.	.
2004	.	172,796	.	.	.
2005	872	173,949	.	18	.
2006	878	176,919	.	16	.
2007	904	182,160	.	16	.
2008	877	186,051	.	18	.
2009	852	188,499	.	17	.
2010	838	188,383	.	18	.
2011	817	190,736	.	20	.
2012	837	192,991	.	21	.
2013	843	193,687	.	20	.
2014	876	194,632	.	22	.
2015	883	199,724	.	20	.
2016	875	201,830	.	20	.
2017	871	201,910	.	18	.
2018	870	204,011	.	19	.
2019	800	206,646	.	21	.
2020	767	204,942	.	21	.



BEA EMPLOYMENT: ARTS, ENTERTAINMENT, AND RECREATION

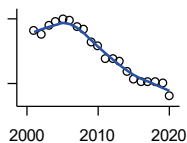
U.S. Bureau of Economic Analysis, Regional Economic Information System (REIS)

Year	County	State of Kansas	Non Metro Kansas	County Rank	Per 1000 or \$ Per Capita
2001	.	25,012	.	.	.
2002	34	25,668	.	42	.
2003	.	24,116	.	.	.
2004	.	25,355	.	.	.
2005	.	26,067	.	.	.
2006	37	26,505	.	48	.
2007	.	27,489	.	.	.
2008	40	27,501	.	42	.
2009	29	27,203	.	48	.
2010	.	27,479	.	.	.
2011	.	28,487	.	.	.
2012	.	30,729	.	.	.
2013	.	31,068	.	.	.
2014	30	32,154	.	44	.
2015	35	31,169	.	41	.
2016	33	32,373	.	41	.
2017	37	33,213	.	38	.
2018	40	33,837	.	34	.
2019	26	33,082	.	42	.
2020	25	26,644	.	38	.

County: county value. Kansas: state value. County Rank: highest county value ranked #1. (\$000): thousands of dollars. Nonmetro Kansas: Kansas total less Metropolitan Areas as defined by the Office of Management and Budget (OMB; released 3/6/2020). Per 1000: For nonmoney amounts, Per 1000=(county value / county population for the same year as the data) x 1000. \$ Per capita=(county value / county population for the same year as the data). Value= . indicates missing or suppressed data or value not calculated.

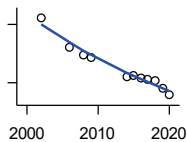
Employment

BEA EMPLOYMENT: GOVERNMENT AND GOVERNMENT ENTERPRISES



U.S. Bureau of Economic Analysis, Regional Economic Information System (REIS)

Year	County	State of Kansas	Non Metro Kansas	County Rank	Per 1000 or \$ Per Capita
2001	2,087	282,293	102,993	25	.
2002	2,051	281,427	103,581	26	.
2003	2,144	282,459	103,389	24	.
2004	2,173	283,877	103,946	23	.
2005	2,195	282,798	103,194	23	.
2006	2,191	288,372	104,103	24	.
2007	2,126	294,413	104,598	26	.
2008	2,103	298,580	104,718	27	.
2009	1,983	300,422	104,081	29	.
2010	1,954	303,875	103,382	30	.
2011	1,833	299,952	101,535	31	.
2012	1,834	298,068	101,180	31	.
2013	1,802	297,689	101,232	32	.
2014	1,717	296,956	100,634	32	.
2015	1,646	295,799	99,719	32	.
2016	1,617	291,536	98,520	32	.
2017	1,613	295,748	99,542	32	.
2018	1,621	298,105	99,499	31	.
2019	1,609	302,017	100,227	31	.
2020	1,482	292,583	96,477	31	.



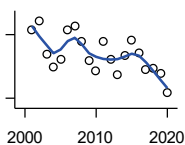
BEA EMPLOYMENT: ACCOMMODATION AND FOOD SERVICES

U.S. Bureau of Economic Analysis, Regional Economic Information System (REIS)

Year	County	State of Kansas	Non Metro Kansas	County Rank	Per 1000 or \$ Per Capita
2001	.	103,353	.	.	.
2002	417	103,692	.	33	.
2003	.	105,138	.	.	.
2004	.	106,694	.	.	.
2005	.	107,303	.	.	.
2006	342	109,888	.	39	.
2007	.	110,863	.	.	.
2008	320	111,092	.	35	.
2009	316	109,353	.	38	.
2010	.	108,628	.	.	.
2011	.	110,514	.	.	.
2012	.	112,574	.	.	.
2013	.	114,102	.	.	.
2014	265	115,768	.	38	.
2015	267	118,503	.	37	.
2016	261	119,764	.	37	.
2017	258	121,181	.	35	.
2018	257	121,900	.	35	.
2019	235	122,819	.	37	.
2020	218	106,561	.	36	.

County: county value. Kansas: state value. County Rank: highest county value ranked #1. (\$000): thousands of dollars. Nonmetro Kansas: Kansas total less Metropolitan Areas as defined by the Office of Management and Budget (OMB; released 3/6/2020). Per 1000: For nonmoney amounts, Per 1000=(county value / county population for the same year as the data) x 1000. \$ Per capita=(county value / county population for the same year as the data). Value= . indicates missing or suppressed data or value not calculated.

Employment

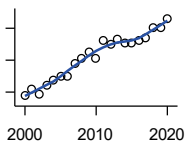


BEA EMPLOYMENT: OTHER SERVICES, EXCEPT PUBLIC ADMINISTRATION

U.S. Bureau of Economic Analysis, Regional Economic Information System (REIS)

Year	County	State of Kansas	Non Metro Kansas	County Rank	Per 1000 or \$ Per Capita
2001	344	92,176	.	41	.
2002	353	95,350	.	41	.
2003	321	95,821	32,629	43	.
2004	310	95,610	.	44	.
2005	317	95,930	32,555	44	.
2006	345	96,413	.	41	.
2007	348	98,444	.	38	.
2008	333	96,705	.	39	.
2009	315	95,534	.	40	.
2010	306	93,302	.	40	.
2011	333	94,865	.	35	.
2012	317	94,977	.	41	.
2013	302	95,471	.	43	.
2014	320	97,806	.	43	.
2015	335	98,041	.	39	.
2016	323	97,219	.	40	.
2017	307	96,568	.	40	.
2018	308	98,645	.	39	.
2019	304	98,638	.	40	.
2020	285	92,245	.	39	.

Income



BEA PER CAPITA PERSONAL INCOME (\$)

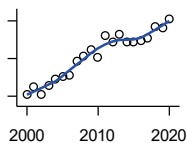
U.S. Bureau of Economic Analysis, Regional Economic Information System (REIS)

Year	County	State of Kansas	Non Metro Kansas	County Rank	Per 1000 or \$ Per Capita
2000	23,804	28,253	23,116	54	.
2001	26,057	29,112	24,576	37	.
2002	24,498	29,248	24,314	52	.
2003	26,974	30,074	26,017	48	.
2004	28,765	30,843	26,583	26	.
2005	30,039	32,545	28,356	47	.
2006	30,062	35,690	29,782	48	.
2007	34,065	38,057	32,034	41	.
2008	35,586	41,257	35,211	63	.
2009	37,374	39,431	33,876	31	.
2010	35,428	39,960	35,795	62	.
2011	41,302	43,015	39,041	53	.
2012	39,917	45,294	39,660	62	.
2013	41,738	46,174	41,747	62	.
2014	40,316	47,013	41,042	63	.
2015	40,558	47,332	40,638	55	.
2016	41,196	47,326	40,797	55	.
2017	42,065	48,756	41,314	46	.
2018	45,226	50,811	43,283	45	.
2019	45,349	52,820	44,491	50	.
2020	48,026	55,677	48,415	62	.

County: county value. Kansas: state value. County Rank: highest county value ranked #1. (\$000): thousands of dollars. Nonmetro Kansas: Kansas total less Metropolitan Areas as defined by the Office of Management and Budget (OMB; released 3/6/2020). Per 1000: For nonmoney amounts, Per 1000=(county value / county population for the same year as the data) x 1000. \$ Per capita=(county value / county population for the same year as the data). Value= . indicates missing or suppressed data or value not calculated.

Income

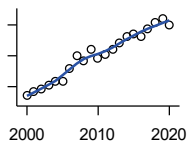
**SOURCES OF PERSONAL INCOME:
TOTAL PERSONAL INCOME (\$000)**



U.S. Bureau of Economic Analysis,
Regional Economic Information System
(REIS)

Year	County	State of Kansas	Non Metro Kansas	County Rank	Per 1000 or \$ Per Capita
2000	254,913	76,105,125	22,273,838	40	23,770.3
2001	275,029	78,664,651	23,411,174	39	26,056.8
2002	254,122	79,365,190	23,000,314	38	24,498.4
2003	277,051	81,890,340	24,494,191	40	26,974.1
2004	294,926	84,335,940	24,924,467	40	28,764.8
2005	303,002	89,346,228	26,452,291	40	30,038.9
2006	303,959	98,610,188	27,661,596	40	30,062.2
2007	341,876	105,943,199	29,715,946	39	34,065.0
2008	355,437	115,852,478	32,614,565	42	35,586.4
2009	372,690	111,697,350	31,394,702	39	37,373.6
2010	353,108	114,239,828	33,291,419	42	35,367.4
2011	411,906	123,558,772	36,221,488	41	41,306.3
2012	393,943	130,948,127	36,696,759	43	39,929.4
2013	413,877	133,979,908	38,513,959	44	41,755.1
2014	394,654	136,878,718	37,680,598	45	40,332.5
2015	393,819	138,336,768	37,081,851	44	40,566.4
2016	397,093	138,533,890	36,930,885	43	41,187.9
2017	404,628	142,729,689	37,104,963	40	42,109.3
2018	433,811	148,955,739	38,589,364	41	45,141.6
2019	432,677	154,961,001	39,424,148	40	45,240.2
2020	455,380	163,462,179	42,618,591	42	47,894.4

**SOURCES OF PERSONAL INCOME:
WAGES AND SALARIES (\$000)**



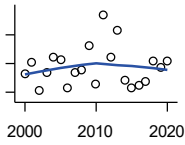
U.S. Bureau of Economic Analysis,
Regional Economic Information System
(REIS)

Year	County	State of Kansas	Non Metro Kansas	County Rank	Per 1000 or \$ Per Capita
2000	111,241	41,766,878	10,254,250	36	10,373.1
2001	116,112	43,269,734	10,518,206	36	11,000.7
2002	121,046	43,875,159	10,696,876	36	11,669.3
2003	126,857	44,488,560	10,894,971	36	12,351.0
2004	133,535	46,702,068	11,333,617	36	13,024.0
2005	133,888	48,537,956	11,614,130	36	13,273.3
2006	153,820	52,083,584	12,299,340	36	15,213.1
2007	174,157	55,442,368	13,093,908	35	17,353.2
2008	167,277	57,623,385	13,647,143	36	16,747.8
2009	184,495	55,605,578	13,199,674	34	18,501.3
2010	171,218	56,089,711	13,345,291	35	17,149.2
2011	177,964	58,104,706	13,856,458	36	17,846.4
2012	186,116	60,616,457	14,473,599	36	18,864.4
2013	195,926	61,872,023	14,781,792	36	19,766.5
2014	207,062	64,457,652	15,385,500	35	21,161.2
2015	210,906	66,729,598	15,454,485	35	21,725.0
2016	207,221	67,253,399	15,422,058	34	21,493.7
2017	217,848	68,830,861	15,731,853	34	22,671.2
2018	228,386	71,580,544	16,311,725	34	23,765.5
2019	235,370	74,404,771	16,882,299	34	24,610.0
2020	224,795	75,798,310	17,251,300	36	23,642.7

County: county value. Kansas: state value. County Rank: highest county value ranked #1. (\$000): thousands of dollars. Nonmetro Kansas: Kansas total less Metropolitan Areas as defined by the Office of Management and Budget (OMB; released 3/6/2020). Per 1000: For nonmoney amounts, Per 1000=(county value / county population for the same year as the data) x 1000. \$ Per capita=(county value / county population for the same year as the data). Value= . indicates missing or suppressed data or value not calculated.

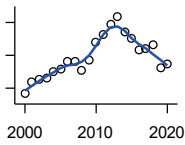
Income

**SOURCES OF PERSONAL INCOME:
PROPRIETORS-FARM (\$000)**



U.S. Bureau of Economic Analysis,
Regional Economic Information System
(REIS)

Year	County	State of Kansas	Non Metro Kansas	County Rank	Per 1000 or \$ Per Capita
2000	12,621	668,539	673,707	20	1,176.9
2001	21,008	779,473	769,336	7	1,990.3
2002	1,524	145,064	187,033	45	146.9
2003	13,980	1,281,076	1,195,298	41	1,361.1
2004	24,259	1,149,425	938,524	12	2,366.0
2005	22,811	1,609,604	1,469,139	25	2,261.4
2006	3,191	766,047	663,735	56	315.6
2007	13,497	1,131,607	1,040,350	39	1,344.9
2008	15,238	1,582,092	1,404,900	55	1,525.6
2009	32,785	1,585,995	1,390,349	10	3,287.7
2010	5,312	2,149,482	2,029,067	80	532.1
2011	53,939	3,188,519	2,989,880	18	5,409.0
2012	24,263	2,519,555	2,296,875	41	2,459.3
2013	43,504	4,499,190	4,158,419	39	4,389.0
2014	8,513	2,231,181	2,157,992	64	870.0
2015	2,723	1,300,733	1,294,370	64	280.5
2016	4,748	1,577,060	1,564,511	52	492.5
2017	7,839	838,480	838,290	35	815.8
2018	21,305	1,050,662	971,690	15	2,217.0
2019	17,616	998,038	878,247	17	1,841.9
2020	21,772	2,151,349	1,887,881	41	2,289.9



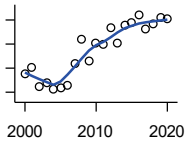
**SOURCES OF PERSONAL INCOME:
PROPRIETORS-NONFARM (\$000)**

U.S. Bureau of Economic Analysis,
Regional Economic Information System
(REIS)

Year	County	State of Kansas	Non Metro Kansas	County Rank	Per 1000 or \$ Per Capita
2000	13,264	4,580,476	1,493,470	45	1,236.9
2001	16,929	4,510,530	1,855,621	46	1,603.9
2002	17,585	5,036,100	1,966,784	48	1,695.3
2003	18,136	4,719,377	1,916,735	42	1,765.7
2004	19,896	4,003,922	2,073,898	40	1,940.5
2005	20,897	4,455,294	2,200,971	44	2,071.7
2006	23,063	7,343,524	2,694,895	47	2,281.0
2007	22,977	7,280,197	2,436,574	43	2,289.5
2008	20,502	9,255,953	2,971,923	53	2,052.7
2009	23,651	9,323,551	2,858,848	48	2,371.7
2010	29,179	9,658,261	3,498,040	50	2,922.6
2011	31,228	12,196,566	4,186,007	55	3,131.6
2012	34,530	15,773,140	4,446,004	55	3,499.9
2013	36,811	16,441,660	4,492,127	54	3,713.8
2014	32,000	15,954,254	4,455,081	56	3,270.3
2015	30,298	15,536,116	4,386,172	59	3,120.9
2016	26,686	14,075,310	3,783,829	59	2,768.0
2017	27,098	15,371,957	3,908,254	60	2,820.1
2018	28,380	15,716,877	4,238,775	59	2,953.2
2019	21,384	16,705,488	3,921,051	66	2,235.9
2020	22,216	16,718,952	3,823,329	63	2,336.6

County: county value. Kansas: state value. County Rank: highest county value ranked #1. (\$000): thousands of dollars. Nonmetro Kansas: Kansas total less Metropolitan Areas as defined by the Office of Management and Budget (OMB; released 3/6/2020). Per 1000: For nonmoney amounts, Per 1000=(county value / county population for the same year as the data) x 1000. \$ Per capita=(county value / county population for the same year as the data). Value= . indicates missing or suppressed data or value not calculated.

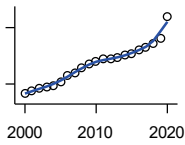
Income



**SOURCES OF PERSONAL INCOME:
DIVIDENDS,INTEREST,RENT(\$000)**

U.S. Bureau of Economic Analysis,
Regional Economic Information System
(REIS)

Year	County	State of Kansas	Non Metro Kansas	County Rank	Per 1000 or \$ Per Capita
2000	57,551	15,916,201	4,736,921	40	5,366.6
2001	60,543	15,770,830	4,699,417	39	5,736.0
2002	52,246	15,111,563	4,316,887	42	5,036.7
2003	54,172	15,370,764	4,360,311	40	5,274.3
2004	51,058	15,820,469	4,251,925	41	4,979.8
2005	51,596	17,147,069	4,485,387	42	5,115.1
2006	52,723	20,117,848	4,945,184	43	5,214.4
2007	61,884	22,269,186	5,526,219	43	6,166.2
2008	71,733	24,972,485	6,180,979	41	7,181.9
2009	63,180	21,453,879	5,308,474	40	6,335.7
2010	70,396	20,861,351	5,414,285	40	7,050.9
2011	69,952	23,387,567	5,781,075	41	7,014.8
2012	76,642	25,689,368	6,389,505	41	7,768.3
2013	70,270	24,832,212	5,984,811	41	7,089.4
2014	77,751	27,412,684	6,403,356	40	7,945.9
2015	78,978	27,244,414	6,423,685	41	8,135.4
2016	82,135	27,293,441	6,389,161	40	8,519.3
2017	76,128	28,385,472	6,700,156	41	7,922.6
2018	78,368	29,953,419	6,772,504	42	8,154.8
2019	80,847	30,820,276	6,957,987	42	8,453.3
2020	80,321	30,283,520	6,844,745	41	8,447.7



**SOURCES OF PERSONAL INCOME:
TRANSFER PAYMENTS (\$000)**

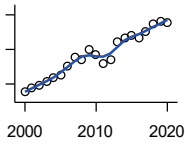
U.S. Bureau of Economic Analysis,
Regional Economic Information System
(REIS)

Year	County	State of Kansas	Non Metro Kansas	County Rank	Per 1000 or \$ Per Capita
2000	49,490	9,650,835	4,036,781	39	4,614.9
2001	52,751	10,549,124	4,355,457	40	4,997.7
2002	55,031	11,208,997	4,553,978	41	5,305.2
2003	57,470	11,709,049	4,702,911	40	5,595.4
2004	58,621	12,040,452	4,802,536	40	5,717.4
2005	62,858	12,696,735	5,059,314	38	6,231.6
2006	69,202	13,642,787	5,455,207	39	6,844.2
2007	71,122	14,686,821	5,775,024	39	7,086.7
2008	77,723	16,552,460	6,322,722	39	7,781.6
2009	81,462	18,025,603	6,790,962	39	8,169.1
2010	84,166	19,189,749	7,089,258	39	8,430.1
2011	86,616	19,625,770	7,255,825	39	8,685.9
2012	86,232	19,354,458	7,148,177	39	8,740.3
2013	87,534	19,639,358	7,185,636	39	8,831.1
2014	90,584	20,380,970	7,399,809	39	9,257.4
2015	92,660	21,116,856	7,623,577	39	9,544.7
2016	95,672	21,884,629	7,886,000	39	9,923.5
2017	99,545	22,559,744	8,062,517	39	10,359.6
2018	102,842	23,628,033	8,393,617	39	10,701.6
2019	108,969	25,050,174	8,845,371	38	11,393.7
2020	131,799	32,319,421	11,074,190	39	13,861.9

County: county value. Kansas: state value. County Rank: highest county value ranked #1. (\$000): thousands of dollars. Nonmetro Kansas: Kansas total less Metropolitan Areas as defined by the Office of Management and Budget (OMB; released 3/6/2020). Per 1000: For nonmoney amounts, Per 1000=(county value / county population for the same year as the data) x 1000. \$ Per capita=(county value / county population for the same year as the data). Value= . indicates missing or suppressed data or value not calculated.

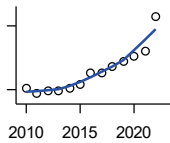
Income

**SOURCES OF PERSONAL INCOME:
LESS SOCIAL INSURANCE (\$000)**



U.S. Bureau of Economic Analysis,
Regional Economic Information System
(REIS)

Year	County	State of Kansas	Non Metro Kansas	County Rank	Per 1000 or \$ Per Capita
2000	17,633	6,655,813	1,663,044	38	1,644.3
2001	18,936	6,869,934	1,740,915	36	1,794.0
2002	19,790	7,008,361	1,778,636	36	1,907.8
2003	20,759	7,172,781	1,821,858	36	2,021.1
2004	21,953	7,556,560	1,904,014	36	2,141.1
2005	22,401	7,911,241	1,986,907	38	2,220.8
2006	25,226	8,406,937	2,090,313	36	2,494.9
2007	27,581	8,806,941	2,180,587	35	2,748.2
2008	27,180	9,207,010	2,299,399	36	2,721.3
2009	30,142	9,002,859	2,248,703	35	3,022.7
2010	28,479	9,235,760	2,321,191	36	2,852.5
2011	26,054	8,515,986	2,139,991	36	2,612.7
2012	26,949	8,816,128	2,195,919	36	2,731.5
2013	32,173	10,225,399	2,540,439	36	3,245.9
2014	33,404	10,609,601	2,635,009	36	3,413.8
2015	34,202	11,028,204	2,663,038	36	3,523.1
2016	33,347	10,915,915	2,604,579	36	3,458.9
2017	35,141	11,224,218	2,669,954	36	3,657.1
2018	37,200	11,749,229	2,797,106	36	3,871.0
2019	38,191	12,245,451	2,889,336	36	3,993.2
2020	37,756	12,715,152	3,027,656	37	3,971.0



HUD MEDIAN FAMILY INCOME

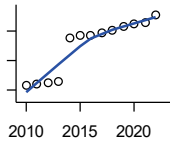
U.S. Department of Housing and Urban
Development (HUD)

Year	County	State of Kansas	Non Metro Kansas	County Rank	Per 1000 or \$ Per Capita
2010	50,300	63,100	.	74	.
2011	49,000	64,300	.	90	.
2012	49,700	65,200	.	90	.
2013	49,600	64,800	.	96	.
2014	50,300	64,400	.	97	.
2015	51,200	66,300	.	96	.
2016	53,800	66,700	.	80	.
2017	53,800	68,500	.	88	.
2018	55,500	73,100	.	87	.
2019	56,700	75,200	.	92	.
2020	57,900	76,500	.	95	.
2021	59,000	77,400	.	90	.
2022	67,200	87,800	.	77	.

County: county value. Kansas: state value. County Rank: highest county value ranked #1. (\$000): thousands of dollars. Nonmetro Kansas: Kansas total less Metropolitan Areas as defined by the Office of Management and Budget (OMB; released 3/6/2020). Per 1000: For nonmoney amounts, Per 1000=(county value / county population for the same year as the data) x 1000. \$ Per capita=(county value / county population for the same year as the data). Value= . indicates missing or suppressed data or value not calculated.

Income

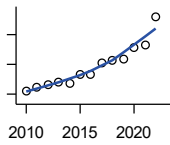
HUD 30% LOW-TO-MEDIUM INCOME (LMI) LIMIT - 4 PERSONS



U.S. Department of Housing and Urban Development (HUD)

Year	County	State of Kansas	Non Metro Kansas	County Rank	Per 1000 or \$ Per Capita
2010	15,850	.	.	105	.
2011	16,100	.	.	105	.
2012	16,300	.	.	105	.
2013	16,550	.	.	105	.
2014	23,850	.	.	105	.
2015	24,250	.	.	105	.
2016	24,300	.	.	105	.
2017	24,600	.	.	105	.
2018	25,100	21,950	.	105	.
2019	25,750	22,550	.	105	.
2020	26,200	22,950	.	105	.
2021	26,500	23,200	.	105	.
2022	27,750	25,950	.	105	.

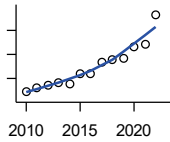
HUD 50% LOW-TO-MEDIUM INCOME (LMI) LIMIT - 4 PERSONS



U.S. Department of Housing and Urban Development (HUD)

Year	County	State of Kansas	Non Metro Kansas	County Rank	Per 1000 or \$ Per Capita
2010	26,400	.	.	105	.
2011	26,850	.	.	105	.
2012	27,200	.	.	105	.
2013	27,600	.	.	105	.
2014	27,400	.	.	105	.
2015	28,700	.	.	105	.
2016	28,650	.	.	105	.
2017	30,150	.	.	105	.
2018	30,550	36,550	.	105	.
2019	30,750	37,600	.	105	.
2020	32,300	38,250	.	104	.
2021	32,550	38,700	.	105	.
2022	36,400	43,300	.	105	.

HUD 80% LOW-TO-MEDIUM INCOME (LMI) LIMIT - 4 PERSONS



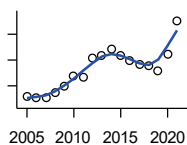
U.S. Department of Housing and Urban Development (HUD)

Year	County	State of Kansas	Non Metro Kansas	County Rank	Per 1000 or \$ Per Capita
2010	42,250	.	.	105	.
2011	42,950	.	.	105	.
2012	43,500	.	.	105	.
2013	44,150	.	.	105	.
2014	43,850	.	.	105	.
2015	45,900	.	.	105	.
2016	45,850	.	.	105	.
2017	48,250	.	.	105	.
2018	48,900	58,500	.	105	.
2019	49,200	60,150	.	105	.
2020	51,700	61,200	.	104	.
2021	52,100	61,900	.	105	.
2022	58,250	69,250	.	105	.

County: county value. Kansas: state value. County Rank: highest county value ranked #1. (\$000): thousands of dollars. Nonmetro Kansas: Kansas total less Metropolitan Areas as defined by the Office of Management and Budget (OMB; released 3/6/2020). Per 1000: For nonmoney amounts, Per 1000=(county value / county population for the same year as the data) x 1000. \$ Per capita=(county value / county population for the same year as the data). Value= . indicates missing or suppressed data or value not calculated.

Banking

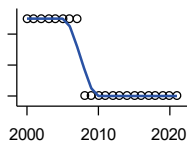
BANK DEPOSITS (1984-2004 in thousands; 2005- in millions)



Federal Deposit Insurance Corporation, Data Book, Operating Banks and Branches

Year	County	State of Kansas	Non Metro Kansas	County Rank	Per 1000 or \$ Per Capita
2005	280	48,304	17,000	32	27.8
2006	276	50,668	17,586	33	27.3
2007	276	54,057	18,517	33	27.5
2008	287	57,869	19,628	34	28.7
2009	299	57,763	20,031	33	30.0
2010	320	60,031	20,678	33	32.1
2011	317	61,094	21,347	33	31.8
2012	354	62,910	22,481	33	35.9
2013	359	64,547	22,795	33	36.2
2014	372	66,538	23,338	32	38.0
2015	360	68,160	23,367	33	37.1
2016	350	70,381	23,420	33	36.3
2017	341	73,329	23,928	33	35.5
2018	340	74,623	24,100	33	35.4
2019	328	76,436	24,488	34	34.3
2020	362	88,563	27,547	34	38.1
2021	426	97,055	30,122	34	45.1

NUMBER OF BANKS



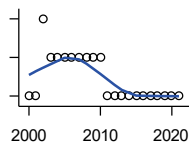
Federal Deposit Insurance Corporation, Data Book, Operating Banks and Branches

Year	County	State of Kansas	Non Metro Kansas	County Rank	Per 1000 or \$ Per Capita
2000	7	410	145	40	.
2001	7	410	136	39	.
2002	7	404	129	39	.
2003	7	397	121	37	.
2004	7	394	112	36	.
2005	7	388	101	38	.
2006	7	385	94	37	.
2007	7	382	91	37	.
2008	6	378	82	46	.
2009	6	374	79	46	.
2010	6	367	70	45	.
2011	6	359	61	44	.
2012	6	348	57	44	.
2013	6	332	45	45	.
2014	6	329	41	44	.
2015	6	320	31	43	.
2016	6	314	24	43	.
2017	6	301	13	43	.
2018	6	289	7	43	.
2019	6	279	3	43	.
2020	6	271	-1	42	.
2021	6	270	-6	41	.

County: county value. Kansas: state value. County Rank: highest county value ranked #1. (\$000): thousands of dollars. Nonmetro Kansas: Kansas total less Metropolitan Areas as defined by the Office of Management and Budget (OMB; released 3/6/2020). Per 1000: For nonmoney amounts, Per 1000=(county value / county population for the same year as the data) x 1000. \$ Per capita=(county value / county population for the same year as the data). Value= . indicates missing or suppressed data or value not calculated.

Banking

NUMBER OF BANKING OFFICES

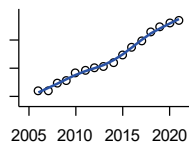


Federal Deposit Insurance Corporation, Data Book, Operating Banks and Branches

Year	County	State of Kansas	Non Metro Kansas	County Rank	Per 1000 or \$ Per Capita
2000	10	1,398	703	39	.
2001	10	1,424	708	39	.
2002	12	1,447	704	33	.
2003	11	1,461	708	37	.
2004	11	1,485	708	39	.
2005	11	1,505	711	37	.
2006	11	1,518	711	36	.
2007	11	1,543	717	37	.
2008	11	1,556	717	37	.
2009	11	1,569	716	35	.
2010	11	1,561	710	34	.
2011	10	1,559	707	39	.
2012	10	1,533	702	38	.
2013	10	1,518	696	38	.
2014	10	1,491	685	37	.
2015	10	1,472	675	36	.
2016	10	1,465	668	36	.
2017	10	1,452	666	36	.
2018	10	1,439	660	37	.
2019	10	1,439	663	37	.
2020	10	1,416	653	37	.
2021	10	1,392	641	37	.

Government

TANGIBLE ASSESSED VALUATION (KDoR, million\$; 2006-)



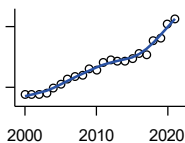
Kansas Department of Revenue, Division of Property Valuation, Statistical Report of Property Assessment and Taxation

Year	County	State of Kansas	Non Metro Kansas	County Rank	Per 1000 or \$ Per Capita
2006	84.7	28,964.3	10,316.9	50	8.4
2007	85.2	30,086.9	10,335.9	54	8.5
2008	99.6	31,000.3	10,856.9	49	10.0
2009	102.7	30,312.3	10,555.6	48	10.3
2010	116.7	29,450.2	10,158.7	43	11.7
2011	120.5	29,963.6	10,572.3	42	12.1
2012	125.1	30,382.9	10,876.2	42	12.7
2013	128.8	30,850.2	11,044.4	41	13.0
2014	135.9	31,783.0	11,388.9	42	13.9
2015	149.6	32,335.7	11,037.8	35	15.4
2016	162.0	33,156.3	10,889.6	30	16.8
2017	174.0	34,754.5	11,439.0	30	18.1
2018	189.9	36,566.1	11,907.1	30	19.8
2019	198.2	38,255.2	12,336.7	30	20.7
2020	206.3	39,333.9	12,219.3	30	21.7
2021	209.0	40,812.0	12,601.5	31	22.1

County: county value. Kansas: state value. County Rank: highest county value ranked #1. (\$000): thousands of dollars. Nonmetro Kansas: Kansas total less Metropolitan Areas as defined by the Office of Management and Budget (OMB; released 3/6/2020). Per 1000: For nonmoney amounts, Per 1000=(county value / county population for the same year as the data) x 1000. \$ Per capita=(county value / county population for the same year as the data). Value= . indicates missing or suppressed data or value not calculated.

Government

SALES TAX COLLECTIONS (\$)

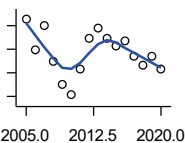


Kansas Department of Revenue. Use tax collections included beginning in calendar year 2018.

Year	County	State of Kansas	Non Metro Kansas	County Rank	Per 1000 or \$ Per Capita
2000	3,282,866	1,475,831,808	432,761,608	44	306,123.3
2001	3,251,018	1,481,026,688	426,316,284	44	308,007.4
2002	3,310,597	1,561,316,864	443,986,950	45	319,155.2
2003	3,477,696	1,626,782,976	461,658,700	45	338,593.7
2004	3,885,380	1,691,899,008	480,309,725	44	378,950.6
2005	4,253,806	1,744,980,352	497,494,867	42	421,711.7
2006	4,766,068	1,851,694,720	532,233,047	40	471,374.5
2007	5,069,011	1,917,546,752	559,319,583	39	505,082.8
2008	5,205,805	1,990,655,744	589,725,773	39	521,205.9
2009	5,773,736	1,866,223,078	548,627,132	37	578,994.8
2010	5,755,641	2,075,193,413	617,409,982	38	576,486.5
2011	6,443,023	2,347,193,367	702,671,534	39	646,111.4
2012	6,707,857	2,456,292,294	740,196,106	43	679,896.3
2013	6,611,928	2,489,204,048	746,226,565	43	667,062.9
2014	6,588,537	2,539,886,774	760,474,019	41	673,330.3
2015	6,778,051	2,642,374,740	750,090,163	40	698,192.3
2016	7,315,889	2,732,611,350	749,030,133	39	758,831.0
2017	7,173,527	2,726,104,521	744,246,491	39	746,542.5
2018	8,591,636	3,277,299,125	893,564,480	40	894,030.8
2019	8,921,003	3,395,631,405	939,607,762	41	932,769.1
2020	10,200,804	3,489,306,791	984,218,931	41	1,072,865.4
2021	10,745,386	3,981,293,227	1,098,391,422	42	1,136,476.6

Crime

CRIME INDEX OFFENSES



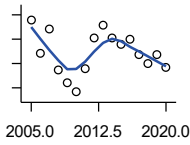
Kansas Bureau of Investigation, Note: Data are aggregated from reports by individual police departments and subject to be incomplete.

Year	County	State of Kansas	Non Metro Kansas	County Rank	Per 1000 or \$ Per Capita
2005	264	111,856	31,630	37	26.2
2006	199	110,032	.	43	19.7
2007	251	111,035	29,921	40	25.0
2008	174	93,996	27,342	44	17.4
2009	125	98,757	27,620	51	12.5
2010	103	98,354	26,909	55	10.3
2011	158	96,638	25,765	42	15.8
2012	222	98,914	26,963	39	22.5
2013	245	93,054	24,488	37	24.7
2014	224	86,323	23,341	36	22.9
2015	207	88,590	21,580	37	21.3
2016	219	90,589	21,565	37	22.7
2017	185	93,091	22,622	37	19.3
2018	167	92,062	20,325	40	17.4
2019	186	87,008	18,547	36	19.4
2020	158	87,346	17,762	39	16.6

County: county value. Kansas: state value. County Rank: highest county value ranked #1. (\$000): thousands of dollars. Nonmetro Kansas: Kansas total less Metropolitan Areas as defined by the Office of Management and Budget (OMB; released 3/6/2020). Per 1000: For nonmoney amounts, Per 1000=(county value / county population for the same year as the data) x 1000. \$ Per capita=(county value / county population for the same year as the data). Value= . indicates missing or suppressed data or value not calculated.

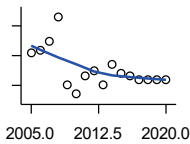
Crime

PROPERTY CRIMES



Kansas Bureau of Investigation, Note: Data are aggregated from reports by individual police departments and subject to be incomplete.

Year	County	State of Kansas	Non Metro Kansas	County Rank	Per 1000 or \$ Per Capita
2005	238	101,414	29,042	38	23.6
2006	172	99,110	.	42	17.0
2007	221	99,632	26,856	40	22.0
2008	136	83,964	24,367	47	13.6
2009	110	87,658	24,825	51	11.0
2010	91	87,926	24,133	55	9.1
2011	140	86,547	23,274	44	14.0
2012	202	88,707	24,220	39	20.5
2013	230	83,551	22,028	37	23.2
2014	202	76,794	20,858	36	20.6
2015	188	77,997	19,138	37	19.4
2016	201	79,549	19,207	36	20.8
2017	168	81,349	19,981	37	17.5
2018	150	79,695	17,769	39	15.6
2019	169	74,314	15,892	34	17.7
2020	141	73,450	15,100	37	14.8



VIOLENT CRIMES

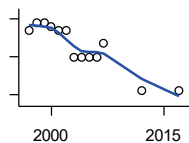
Kansas Bureau of Investigation, Note: Data are aggregated from reports by individual police departments and subject to be incomplete.

Year	County	State of Kansas	Non Metro Kansas	County Rank	Per 1000 or \$ Per Capita
2005	26	10,442	2,588	37	2.6
2006	27	10,922	.	35	2.7
2007	30	11,403	3,065	38	3.0
2008	38	10,032	2,975	33	3.8
2009	15	11,099	2,795	50	1.5
2010	12	10,428	2,776	56	1.2
2011	18	10,091	2,491	46	1.8
2012	20	10,207	2,743	45	2.0
2013	15	9,503	2,460	52	1.5
2014	22	9,529	2,483	41	2.2
2015	19	10,593	2,442	42	2.0
2016	18	11,040	2,358	40	1.9
2017	17	11,742	2,641	45	1.8
2018	17	12,367	2,556	47	1.8
2019	17	12,694	2,655	48	1.8
2020	17	13,896	2,662	49	1.8

County: county value. Kansas: state value. County Rank: highest county value ranked #1. (\$000): thousands of dollars. Nonmetro Kansas: Kansas total less Metropolitan Areas as defined by the Office of Management and Budget (OMB; released 3/6/2020). Per 1000: For nonmoney amounts, Per 1000=(county value / county population for the same year as the data) x 1000. \$ Per capita=(county value / county population for the same year as the data). Value= . indicates missing or suppressed data or value not calculated.

Agriculture

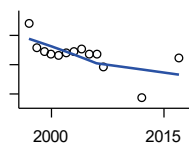
NUMBER OF FARMS



Kansas Agricultural Statistics, Kansas Farm Facts

Year	County	State of Kansas	Non Metro Kansas	County Rank	Per 1000 or \$ Per Capita
1997	670	64,000	47,900	39	61.1
1998	690	65,000	48,850	38	63.0
1999	690	65,000	48,850	38	63.9
2000	680	64,000	48,030	38	63.4
2001	670	63,000	47,200	38	63.5
2002	670	63,000	47,200	38	64.6
2003	600	64,500	48,150	43	58.4
2004	600	64,500	48,150	43	58.5
2005	600	64,500	48,150	43	59.5
2006	600	64,000	47,650	43	59.3
2007	637	65,531	48,179	40	63.5
2012	510	61,773	45,655	50	51.7
2017	510	58,569	42,404	43	53.1

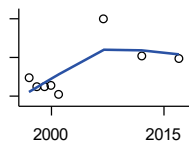
TOTAL ACRES HARVESTED



Kansas Agricultural Statistics, Kansas Farm Facts

Year	County	State of Kansas	Non Metro Kansas	County Rank	Per 1000 or \$ Per Capita
1997	267,910	22,846,000	19,430,580	26	24,422.1
1998	251,700	22,143,500	18,943,650	29	22,986.3
1999	248,700	21,708,900	18,581,750	30	23,023.5
2000	247,400	21,639,000	18,528,870	28	23,069.8
2001	246,600	21,847,900	18,689,750	32	23,363.3
2002	247,700	20,230,400	17,089,120	28	23,879.3
2003	248,800	21,827,700	18,661,920	30	24,223.5
2004	250,700	20,876,900	17,721,500	29	24,451.4
2005	247,120	21,936,500	18,807,930	33	24,498.9
2006	247,420	21,412,700	18,291,120	31	24,470.4
2007	238,767	19,886,655	17,164,743	28	23,791.1
2012	217,158	21,043,596	17,966,843	42	22,010.7
2017	244,983	21,837,465	18,543,057	29	25,495.2

VALUE: LIVESTOCK AND POULTRY (\$000)

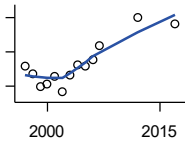


Kansas Agricultural Statistics, Kansas Farm Facts

Year	County	State of Kansas	Non Metro Kansas	County Rank	Per 1000 or \$ Per Capita
1997	14,900	2,806,445	2,500,305	72	1,358.2
1998	12,481	2,670,432	2,378,007	82	1,139.8
1999	12,586	2,849,061	2,554,528	78	1,165.2
2000	12,930	2,901,469	2,609,032	80	1,205.7
2001	10,315	2,693,274	2,437,187	87	977.3
2007	29,837	9,525,971	.	64	2,973.0
2012	20,498	11,476,571	10,883,216	77	2,077.6
2017	19,786	12,322,289	.	85	2,059.1

County: county value. Kansas: state value. County Rank: highest county value ranked #1. (\$000): thousands of dollars. Nonmetro Kansas: Kansas total less Metropolitan Areas as defined by the Office of Management and Budget (OMB; released 3/6/2020). Per 1000: For nonmoney amounts, Per 1000=(county value / county population for the same year as the data) x 1000. \$ Per capita=(county value / county population for the same year as the data). Value= . indicates missing or suppressed data or value not calculated.

Agriculture



VALUE:FIELD CROPS (\$000)
EXCLUDING GOVERNMENT
PROGRAM PAYMENTS

Kansas Agricultural Statistics, Kansas
Farm Facts

Year	County	State of Kansas	Non Metro Kansas	County Rank	Per 1000 or \$ Per Capita
1997	63,641	4,474,942	3,800,365	20	5,801.4
1998	54,911	3,594,319	3,124,409	13	5,014.7
1999	40,011	3,118,193	2,728,319	26	3,704.0
2000	42,230	2,915,660	2,540,052	24	3,937.9
2001	51,490	3,283,117	2,857,136	12	4,878.3
2002	32,928	3,011,855	2,560,580	36	3,174.4
2003	52,590	3,623,255	3,150,629	17	5,120.2
2004	64,990	3,445,688	2,896,603	9	6,338.6
2005	63,975	3,678,123	3,182,677	9	6,342.3
2006	70,782	4,308,716	3,684,132	14	7,000.5
2007	86,532	4,887,212	.	10	8,622.2
2012	120,011	6,983,993	6,044,551	14	12,164.1
2017	112,057	6,460,437	.	6	11,661.7

County: county value. Kansas: state value. County Rank: highest county value ranked #1. (\$000): thousands of dollars. Nonmetro Kansas: Kansas total less Metropolitan Areas as defined by the Office of Management and Budget (OMB; released 3/6/2020). Per 1000: For nonmoney amounts, Per 1000=(county value / county population for the same year as the data) x 1000. \$ Per capita=(county value / county population for the same year as the data). Value= . indicates missing or suppressed data or value not calculated.