



Ad Astra Simul



“**We** choose to go to the Moon in this decade and do the other things, **not because they are easy**, but **because they are hard**; because that **goal will serve to organize and measure** the best of our energies and skills, because that **challenge** is one that we are **willing to accept**, one we are **unwilling to postpone**, and one we intend to **win**, and the others, too.”



A New Space Race



Communities have to “chase” people rather than just jobs now more than ever



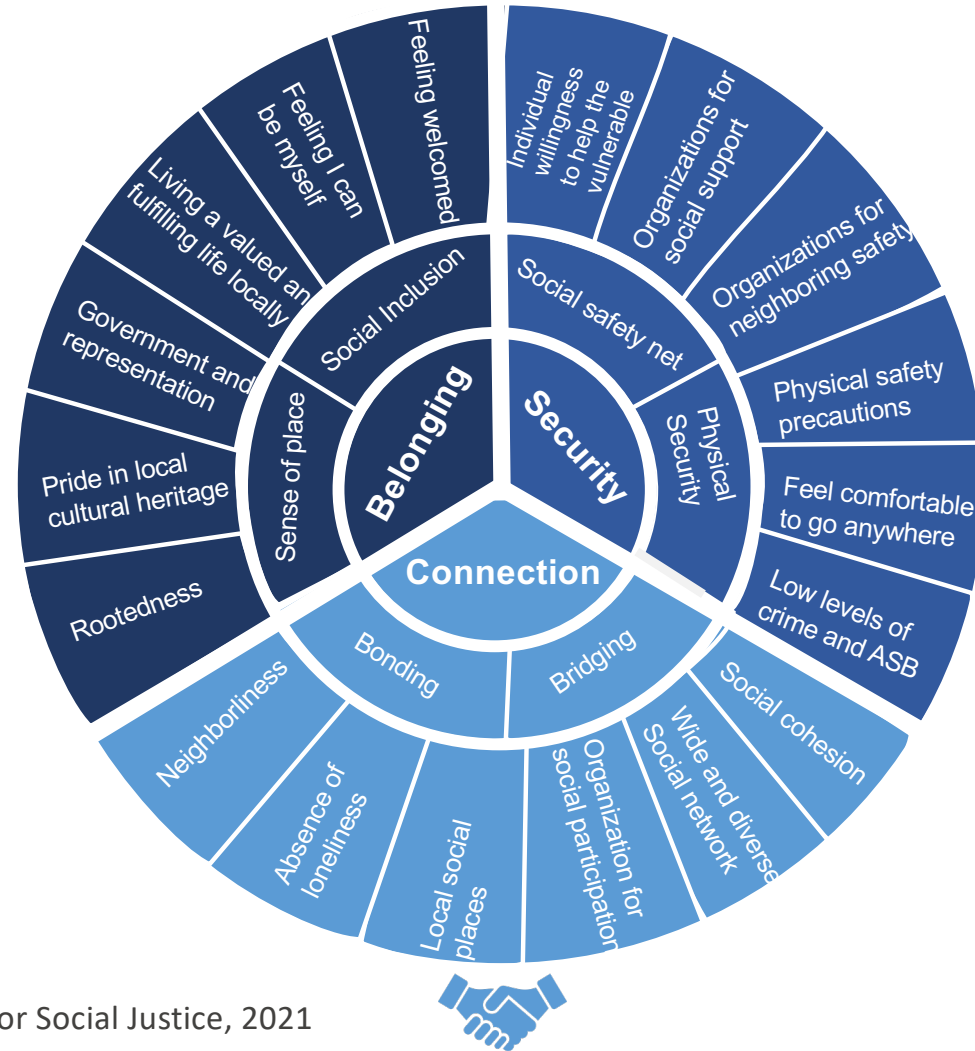


What makes a thriving community?

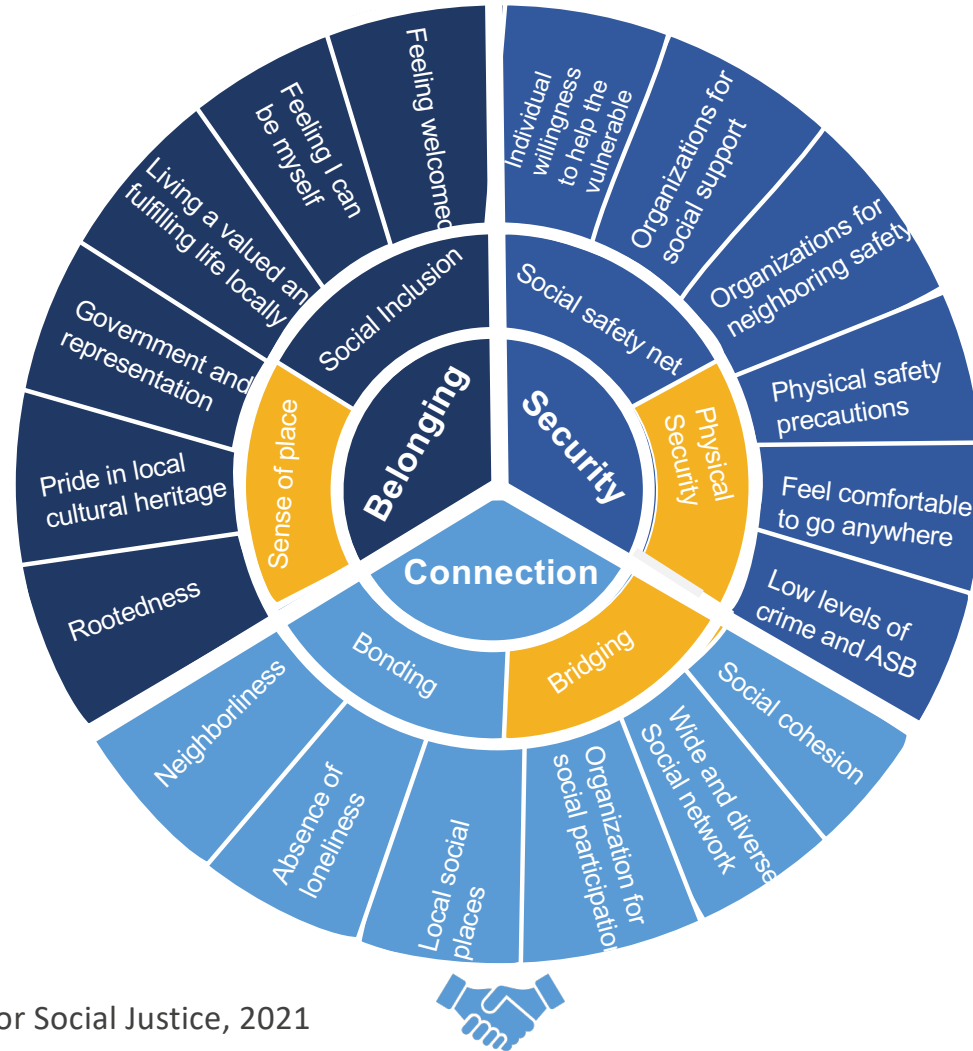


3 Pillars of Thriving Communities:

1. Security
2. Connection
3. Belonging



Source: Centre for Social Justice, 2021



Source: Centre for Social Justice, 2021

Security



Photo credit: KSN-TV



Security

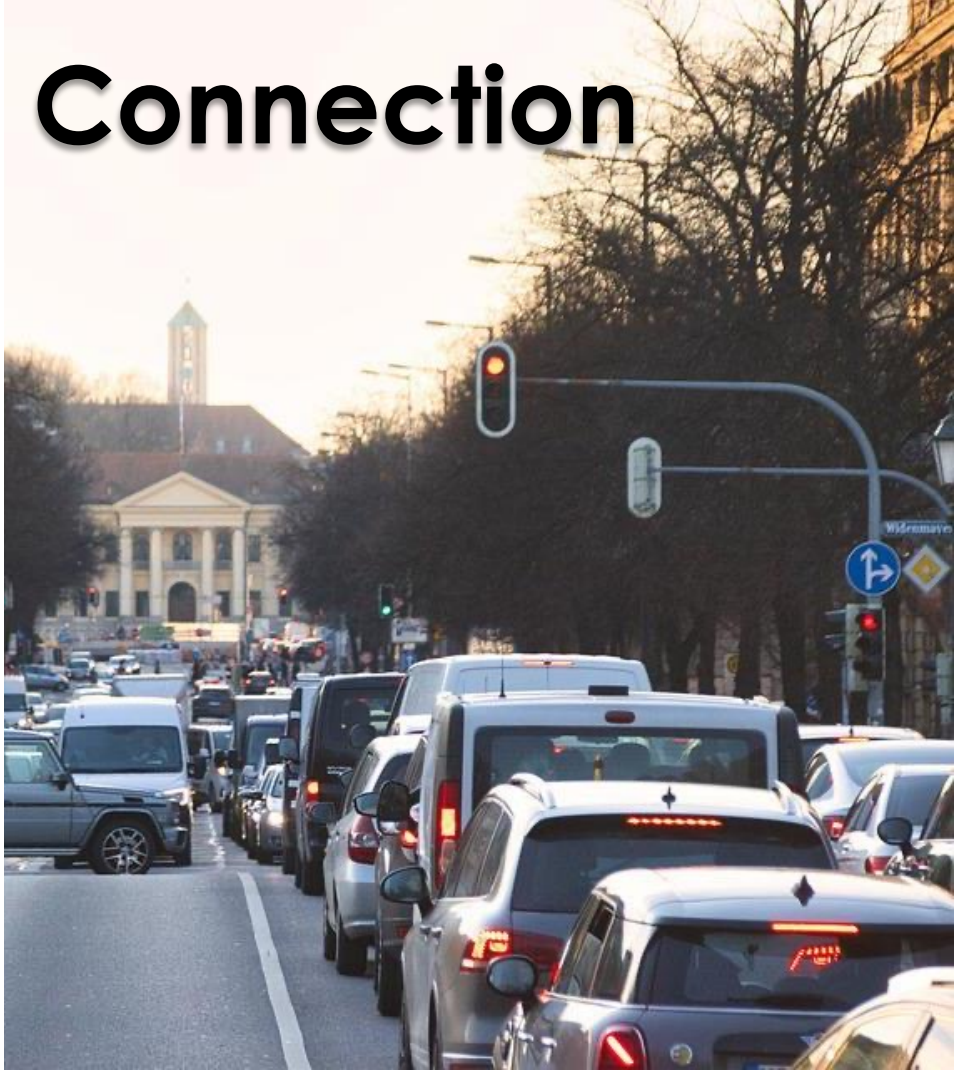


Connection



Loneliness is as bad for you as smoking, but hanging out with friends reverses the effects

Connection



Belonging

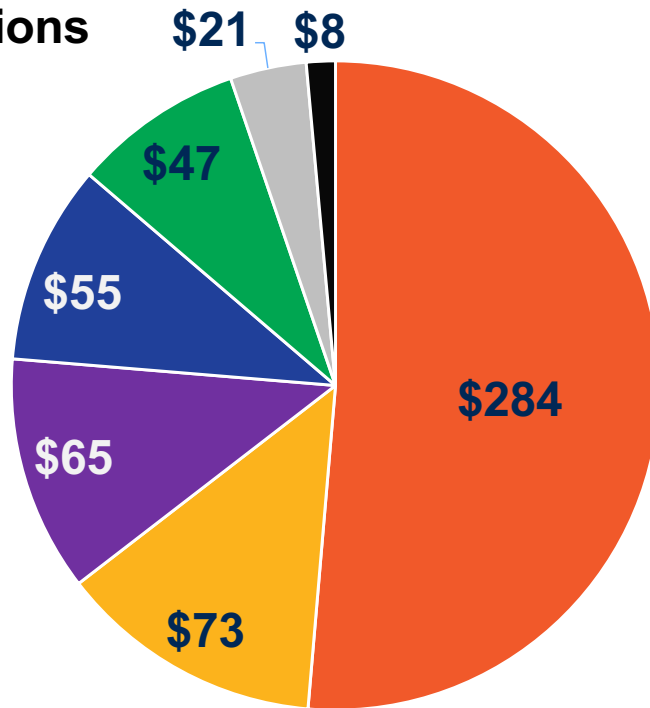


“Some of us have great runways already built for us. If you have one, take off. But if you don't have one, realize **it is your responsibility** to grab a shovel and **build one** for yourself and **for those who will follow after you.**”



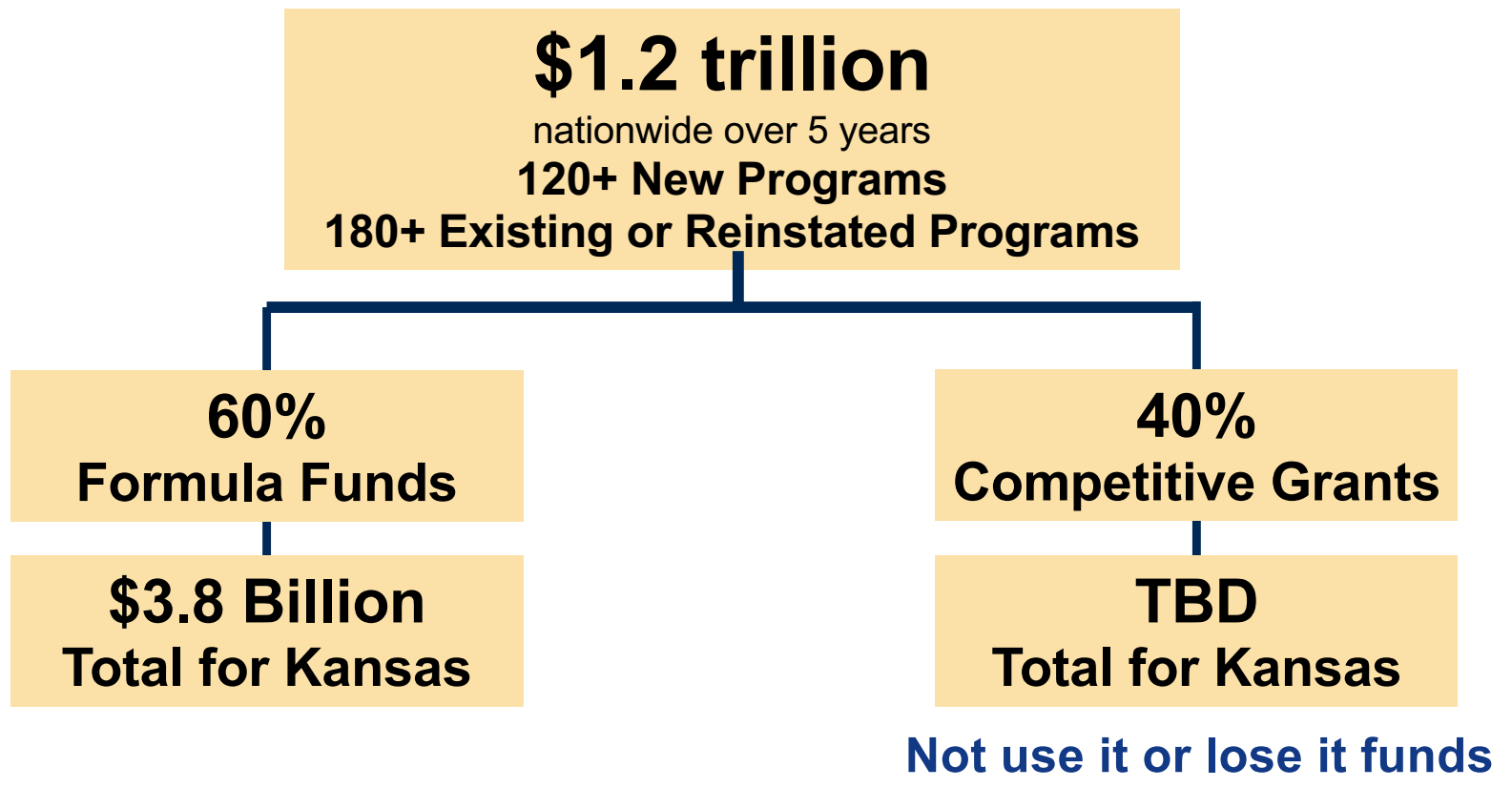
Bipartisan Infrastructure Law: Baseline investments by sector nationwide

In Billions



- Transportation
- Energy & Power
- Broadband
- Water
- Resiliency
- Environmental remediation
- Western water infrastructure

Bipartisan Infrastructure Law overview





RAISE Grant: Salina

**\$22 M federal
\$5 M local**

Smokey Hill River Renewal Project:

- ✓ Replaces 7 bridges
- ✓ Multimodal hub
- ✓ Construct new bike/ped trails
- ✓ Community plaza
- ✓ 2 EV charging stations
- ✓ Rejuvenate 6 parks

Competitive Grant Win!



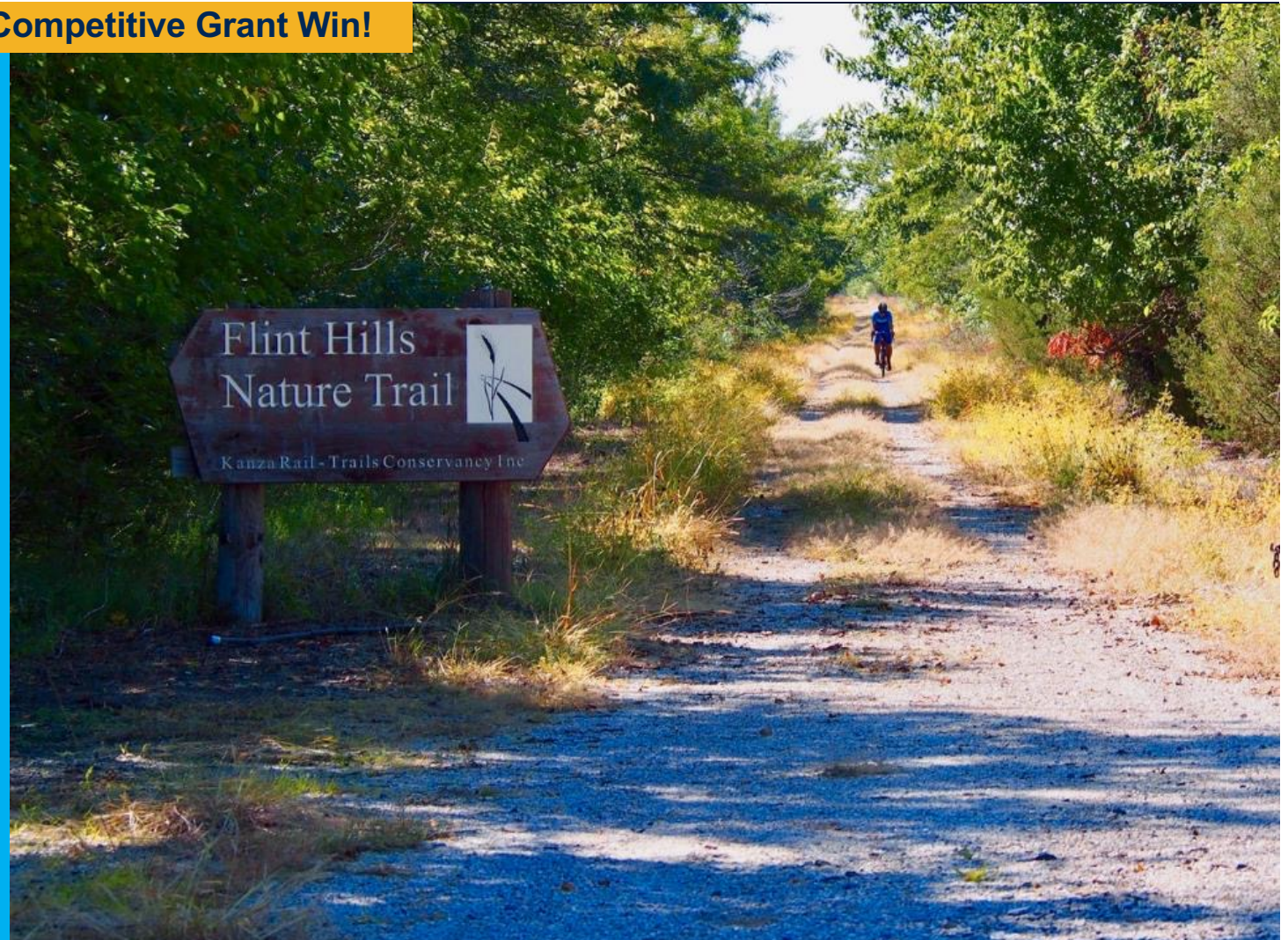


RAISE Grant:
KDWP
\$24.8 M

Flint Hills Nature Trail
Miami, Morris
Dickinson, Osage
Franklin, Lyon

- ✓ Safety improvements
- ✓ Signage
- ✓ Drainage improvements,
- ✓ Bridges & culverts
- ✓ Base improvements
- ✓ Limestone surfacing

Competitive Grant Win!





**RAISE Grant:
MARC
\$5.6 M**

**Bi-State Sustainable
Reinvestment
Corridor**

- ✓ Planning for a 24-mile, zero-emission, regional transit route
- ✓ Includes improved access to housing, health care, employment and education










Competitive Grant Win!



BIL formula funding for Kansas

Preliminary Estimates

5-year Total

	Federal Highway Aid*	\$2.6 billion
	Bridge Replacement & Repair	\$225 million
	Public Transportation	\$272 million
	Airports	\$109 million
	EV Charging Network	\$40 million
	Broadband	\$100 million
	Water Infrastructure	\$454 million
	Wildfires Protection	\$25 million
	Cyberattack Protection	\$14 million

Statewide Totals: \$3.8 billion

NOTE: Not all new money & does not include potential discretionary dollars

*Includes state, city & county & NOT all NEW money

Additional Transportation Funding under BIL

	Avg. Annual	5-Year Avg. Total
HIGHWAYS: Federal-aid highway funding	\$89M	\$445M
BRIDGES: Funds targeted for bridges in poor/fair condition.	\$45M	\$225M
ELECTRIC VEHICLE INFRASTRUCTURE: Charging infrastructure, education & outreach	\$8M	\$40M
RURAL TRANSIT: KDOT administers rural transit funds	\$3.7M	\$14.8M
TOTAL	\$145.7M	\$730M



Competitive Grants

CARES

Responsibility mostly on States to deliver/invest funds

- **State discretionary dollars**
- Dollars distributed directly States, tribal governments and large counties to use on COVID relief efforts of their choosing
- Kansas chose to share a portion of funds directly with the counties that did NOT receive funds directly from the federal government
- Local entities had opportunities to apply for additional funds through SPARK process

BIL

Responsibility mostly on Communities to seek funds for their infrastructure needs

- **No State discretionary dollars**
- Dollars distributed through existing infrastructure programs administered at the federal and state levels
- Additional dollars available to tribal and local governments but they must apply for it.

Kansas needs to be stronger at seeking federal funds

National average: \$1,737
per person

per Kansan \$1,307

Difference \$430 per person



“ Opportunity is missed by most people because it is dressed in overalls and looks like work.”

- Thomas Edison





Kansas
Infrastructure
Hub launched to
help

What the Hub is and isn't

It is:

- Information exchange
- A connector
- Subcabinet working group
- Advisory Group
- Voluntary and collaborative

It isn't:

- A mandate
- A gatekeeper
- A funding source
- Scheduler
- Approver
- In charge

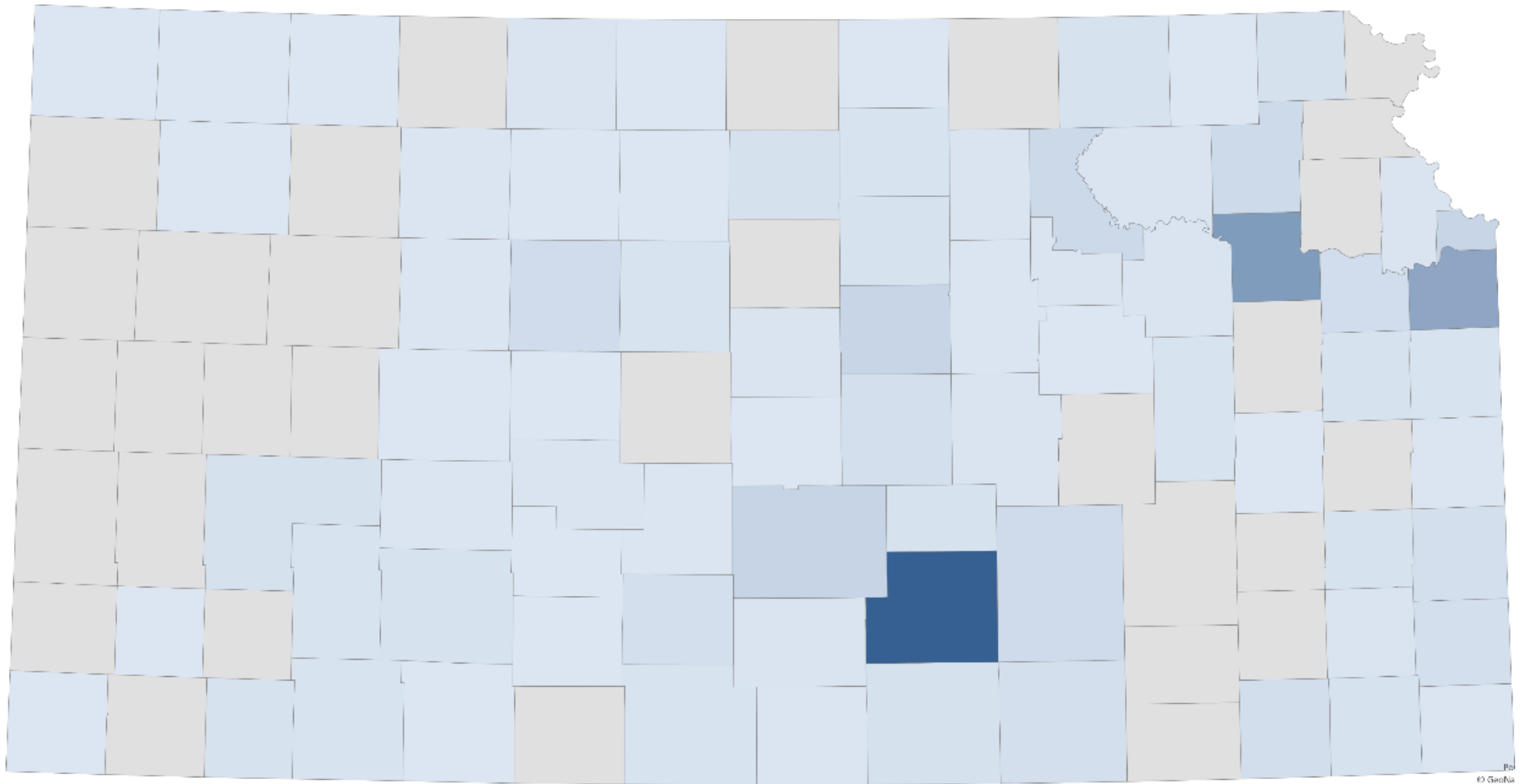
Kshub.org



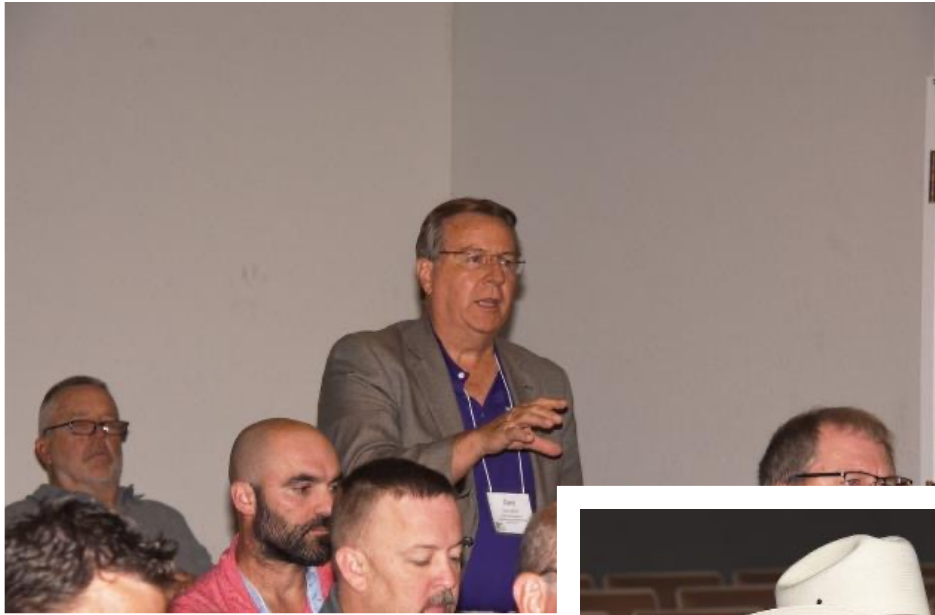
Kansas Hub 1st major action – hosting Kansas Infrastructure Summit



650+ Summit Attendees







Communities need help in these areas:

1. **Identifying needs** or project ideas to submit for grants. AND to **connect the funding** opportunities to your needs.
2. **Seeking** federal grant **dollars** or state programs (grant writing)
3. **Administering federal dollars**/meeting requirements
4. **Building** infrastructure projects



Actions underway since the Summit



Post-Summit Actions

SAVE THE DATE

Tuesday, August 2, 2022

11:00 AM—1:00 PM

Please join the Southeast Kansas Regional Planning Commission for a follow-up discussion on the SEK Infrastructure HUB Group

**20 S. Highland (SEKRPC Office, 2nd floor)
Chanute, KS 66720**

Lunch provided by SEKRPC

Join in-person or online (link to follow next week)

Local

REGIONAL DISCUSSION ANNOUNCED ON BIPARTISAN INFRASTRUCTURE LAW FUNDING OPPORTUNITIES

*Written By: Press Release from North Central Regional Planning Commission
Published Date: 08-11-2022*



North Central Regional Planning Commission

A round table discussion focused on the federally approved Bipartisan Infrastructure Law and its potential funding opportunities for North Central Kansas has been announced.

The meeting will be Tuesday, August 16th in Salina, Kansas, at the Visit Salina Annex located at 120 W. Ash Street from 10 am to 2:30 pm. Advance registration is required by Friday, August 12th. The North Central Regional Planning Commission (NCRPC), based in Beloit, Kansas, is hosting the event.

The discussion will focus on strategizing a regional approach to accessing funds through the Bipartisan Infrastructure Law (BIL) for the area representing the

Kansas Department of Transportation North Central District 2

"The NCRPC is pleased to convene this initial round table discussion to bring additional information to the region regarding this opportunity for federal funding to move forward with important projects in the region,"

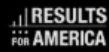
said NCRPC Strategic Development Advisor Deb Ohlde. "Kansas Department of Transportation staff have emphasized the importance of regional collaboration and we want to facilitate that over the coming months."



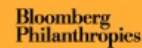
The Local Infrastructure Hub Opens Enrollment for Technical Assistance Program to Help Small, Mid-Sized Cities and Towns Access Federal Infrastructure Dollars

 Press Releases

National League of Cities and Expert Partners will Provide Specialized Support to Cities with 150,000 Residents or Less, Made Possible by \$10 Million Investment



WITH SUPPORT FROM



Local Infrastructure Hub

ABOUT SUPPORT FUNDING NEWS RESOURCES



Registration now open!

Courses to help small and mid-sized cities develop competitive infrastructure grant applications

LEARN MORE

The Local Infrastructure Hub Advantage

localinfrastructure.org





Kshub.org



[HOME](#) [ABOUT BIL](#) [GRANTS](#) [NEWS & EVEN](#)

Partnering Directory

Justin Owens Kaw Valley Engineering Private Sector	John Garris City of Independence	Brett Waggoner Governmental Assistance Services Private Sector	Sharon Quaney Gades Sales Company, Inc.	Shane Noland Augusta Kansas Wastewater Division	Marg Yaroslaski Independence Community College	Steve Hauck City of Shawnee
Tyler Dehn Wildcat Construction Co., Inc. Private Sector	Brent Chesnut Benesch Private Sector	Heather Schmidt Johnson County Government	Cyndra Kastens City of Anthony City	Ben Wilson Decker Electric, Inc. Private Sector	Keon Muldrow Kansas PTAC Other Federal Agency	Ben Nelson City of Wichita City
Jay Talreja Viaanlx, Inc. Private Sector	Bruce Fritz Viaanlx, Inc. Private Sector	JANCITA WARRINGTON KS NATIVE AMERICAN AFFAIRS - Executive Director State Agency	Megan Spence City of Olathe City	Adam Timmerman Greater Kansas City Chamber of Commerce	Deb Ohlde North Central Regional Planning Commission Other Non-Profit	Nancy Daniels K-State Research and Extension State Agency Other
Hugh Carter The Chamber of Lawrence, Kansas	Paul Bean Franklin County Development Council Non-Profit	Amanda Horn North Central Regional Planning Commission Other	Sarah Doherty GBA Private Sector	Chad Parasas WAMPO (Wichita Area MPO) Federal Agency County Other	angela kreidler Rainbow Communications Other	Deb Minkler RCED County
Rob Krewson Benesch Private Sector	Nelda Buckley University of Kansas Transportation Center State Agency	Lynn Packer Sedgwick County Public Works County	Tiffany Hartson City of Harper	Jill Kuehny KanOkla Networks Private Sector	Michael Gardner Talaferro & Browne, Inc. Private Sector	Jacob Spencer City of Columbus City
Matthew Godnez Southeast Kansas Regional Planning Commission City County Federal Agency Non-Profit	Michael McKenna Affinis Corp	Emily Thon WAMPO City County Federal Agency Non-Profit State Agency	WAMPO KS WAMPO State Agency Federal Agency City County Other	Vanessa Lamoreaux Kansas Department of Transportation State Agency	Amy Link Kansas Department of Transportation State Agency	



Build
America
Bureau
Administers

Thriving Communities Program

Building Community Capacity to Take Transformative Projects from Concept to Completion

Program Overview

Funded with \$25 million through the [Consolidated Appropriations Act of 2022](#), the U.S. Department of Transportation's (DOT) new Thriving Communities Program (TCP) aims to ensure that disadvantaged communities adversely or disproportionately affected by environmental, climate, and human health policy outcomes have the technical tools and organizational capacity to compete for federal aid and deliver quality infrastructure projects that enable their communities and neighborhoods to thrive.



TCP facilitates the planning and development of transportation and community revitalization activities and provides tools to ensure that under-resourced communities can access the historic funding provided in the [Bipartisan Infrastructure Law](#) (BIL).

The Thriving Communities Program will be administered by the [Build America Bureau](#) as part of its broader efforts to provide technical assistance to communities.

Actions Other States Have Taken





States providing matching funds for local governments

West Virginia	\$250 M	For municipalities to use on water & sewer system upgrades
Wyoming	\$210 M	State & local match funds for: <ul style="list-style-type: none">• Energy (\$100M)• Infrastructure (\$75M)• Broadband (\$25M)• Wildlife Crossing (\$10M)
Colorado	\$80 M	State & local match funds for BIL grants
Louisiana	\$20 M	State & local match funds for BIL grants



States providing staff & consultant support for local govts.

Michigan	Established Infrastructure Office that provides full-time staff and consultant services
Utah	Providing a full-time position in each of its regional planning associations for ongoing support
Colorado	Established an Infrastructure Office to manage its matching funds fund

States providing technical assistance and grant writing

State	Partnering With	Grant Writing	Tech. Assist.	Notes
Alaska* (not state funded)	Alaska Municipal League	✓	✓	Includes diagnostic, 1-hour of free consultation & referral to a grant writer
Louisiana	Louisiana League of Municipalities, County Assoc.	✓	✓	\$5M provided.
Rhode Island	Compete RI (private sector)	✓	✓	\$500,000 provided.
Delaware	University of Delaware	✓	✓	\$1.7M provided.

What can you do?

- Be an infrastructure champion.
- Advocate for strong state and local partnerships.
- Help clear up misconceptions about how this legislation works – different from CARES.





Ad Astra Simul

to the stars together

