



*Informing Policy. Improving Health.*

# Health Disparities in Kansas

Kansas Economic Policy Conference  
October 22, 2015

---

Shawna Chapman, Ph.D., M.P.H., M.A.  
Senior Analyst  
Kansas Health Institute



# Causal Chain of Health

***Why wasn't Julie in her first grade class today?***

Julie had an asthma attack this morning.

***Why?*** Black mold in her house irritates her asthma.

***Why?*** Leaky plumbing and structural decay let water intrude into the house's walls.

***Why?*** Julie's family could not afford repairs.

***Why?*** Her father is unemployed.

***Why?*** Because he was hurt at his construction job, has little formal education and cannot find another job.

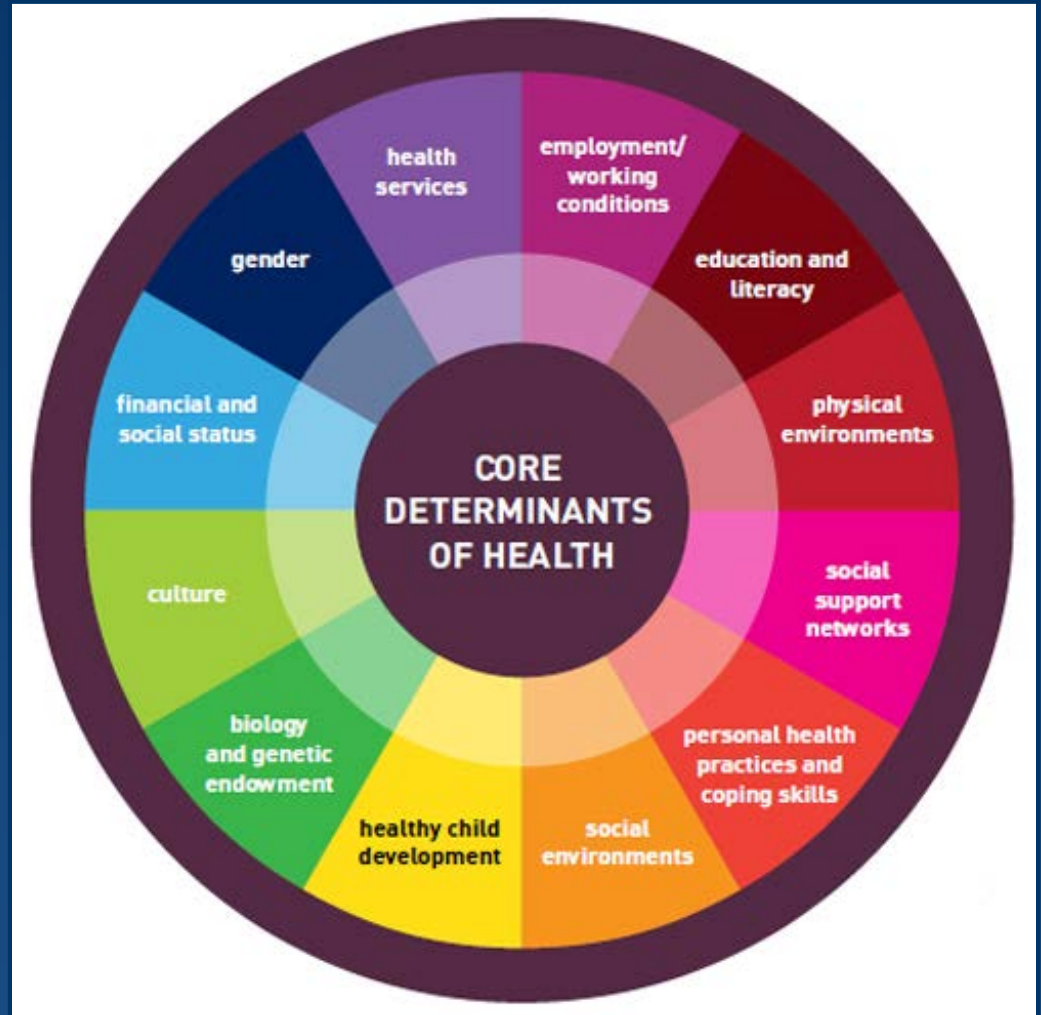
**Mold**





# Social Determinants of Health

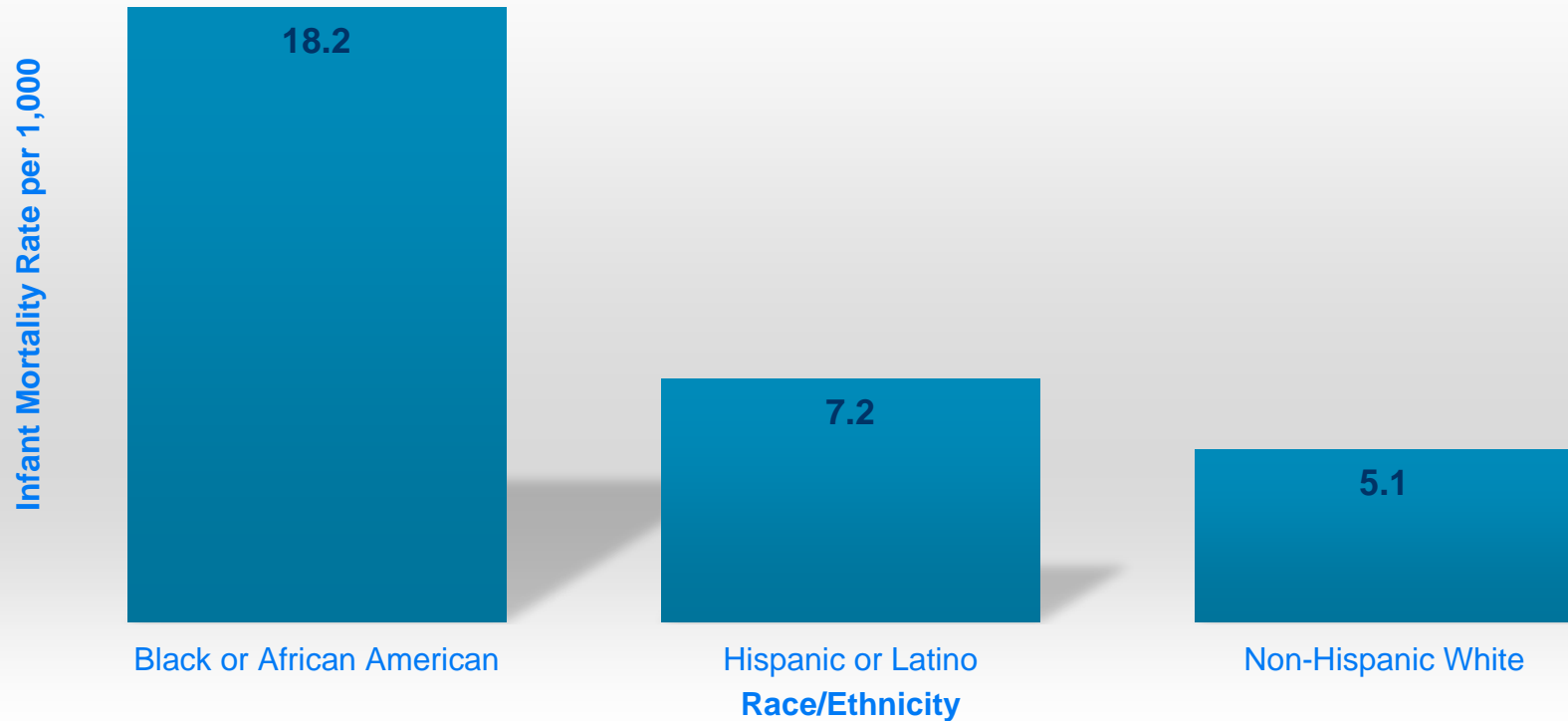
*...the environmental conditions that affect health and quality of life*





# Social Gradient in Health

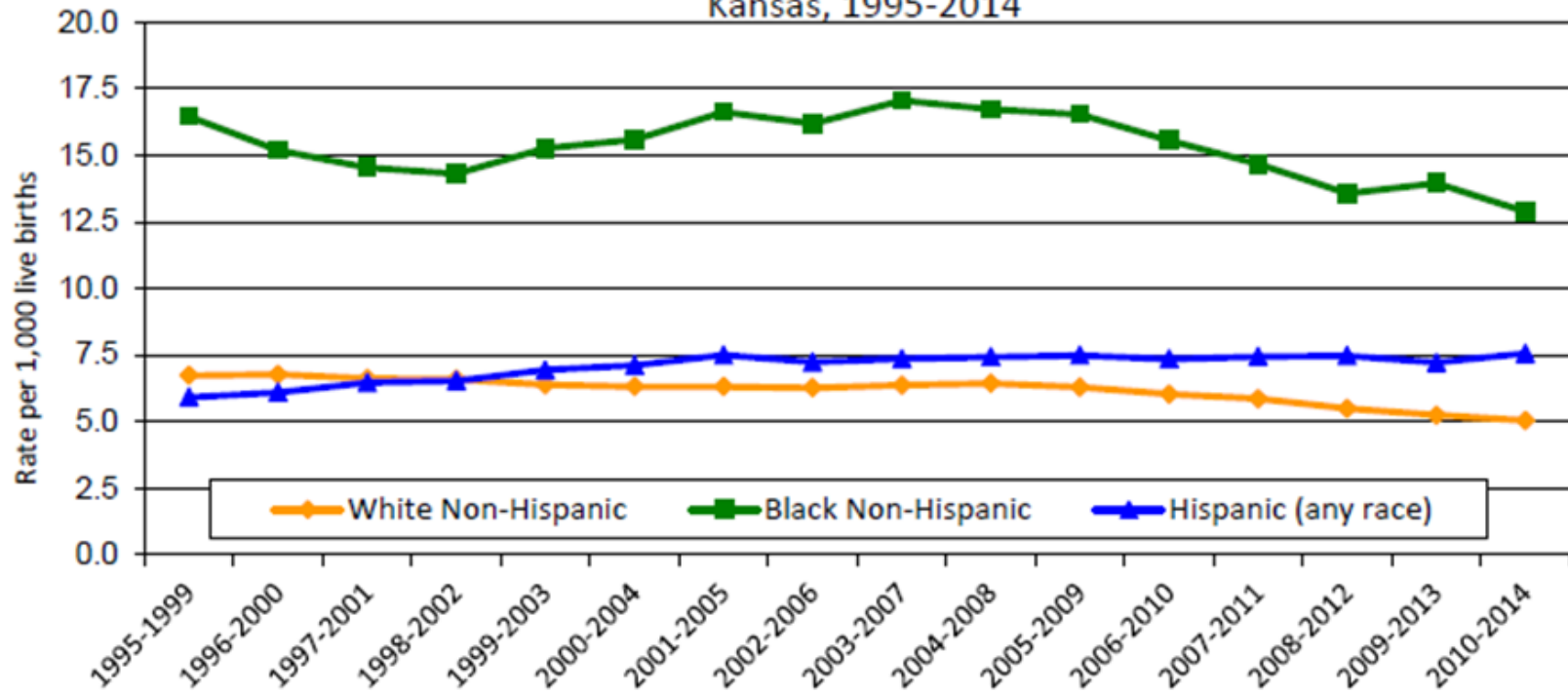
Kansas Infant Mortality Rate per 1,000 by Race (2013)





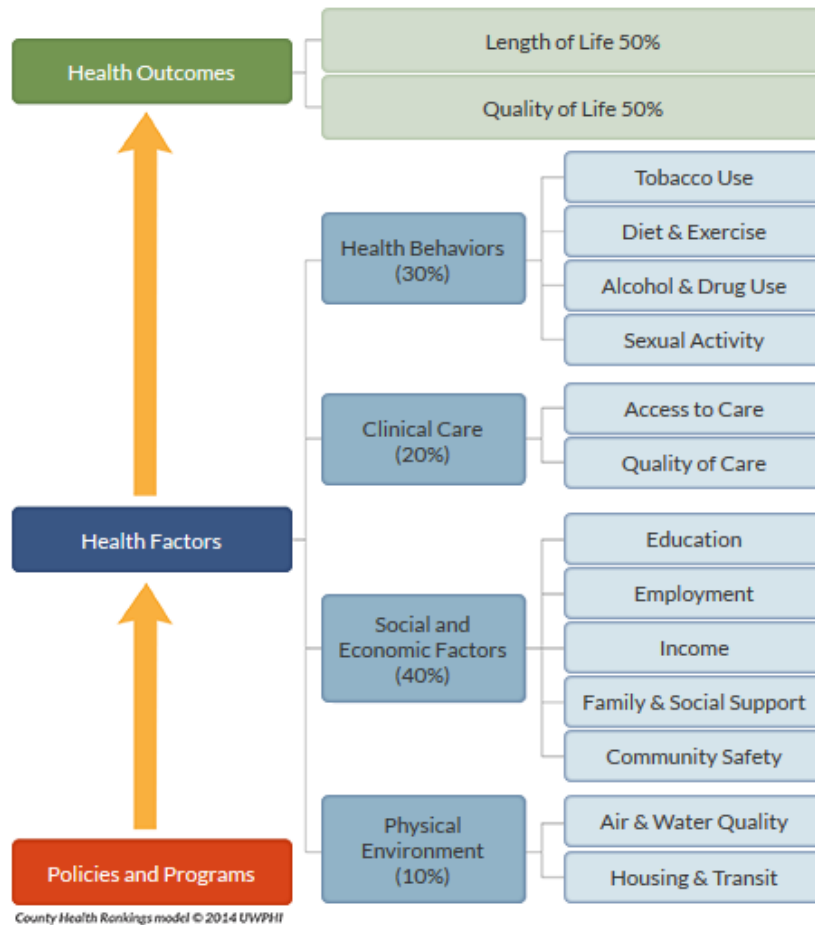
# Kansas Infant Mortality

Figure B. Five Year Average Infant Mortality Rate  
By Population Group of Mother  
Kansas, 1995-2014





# The *County Health Rankings* model of health

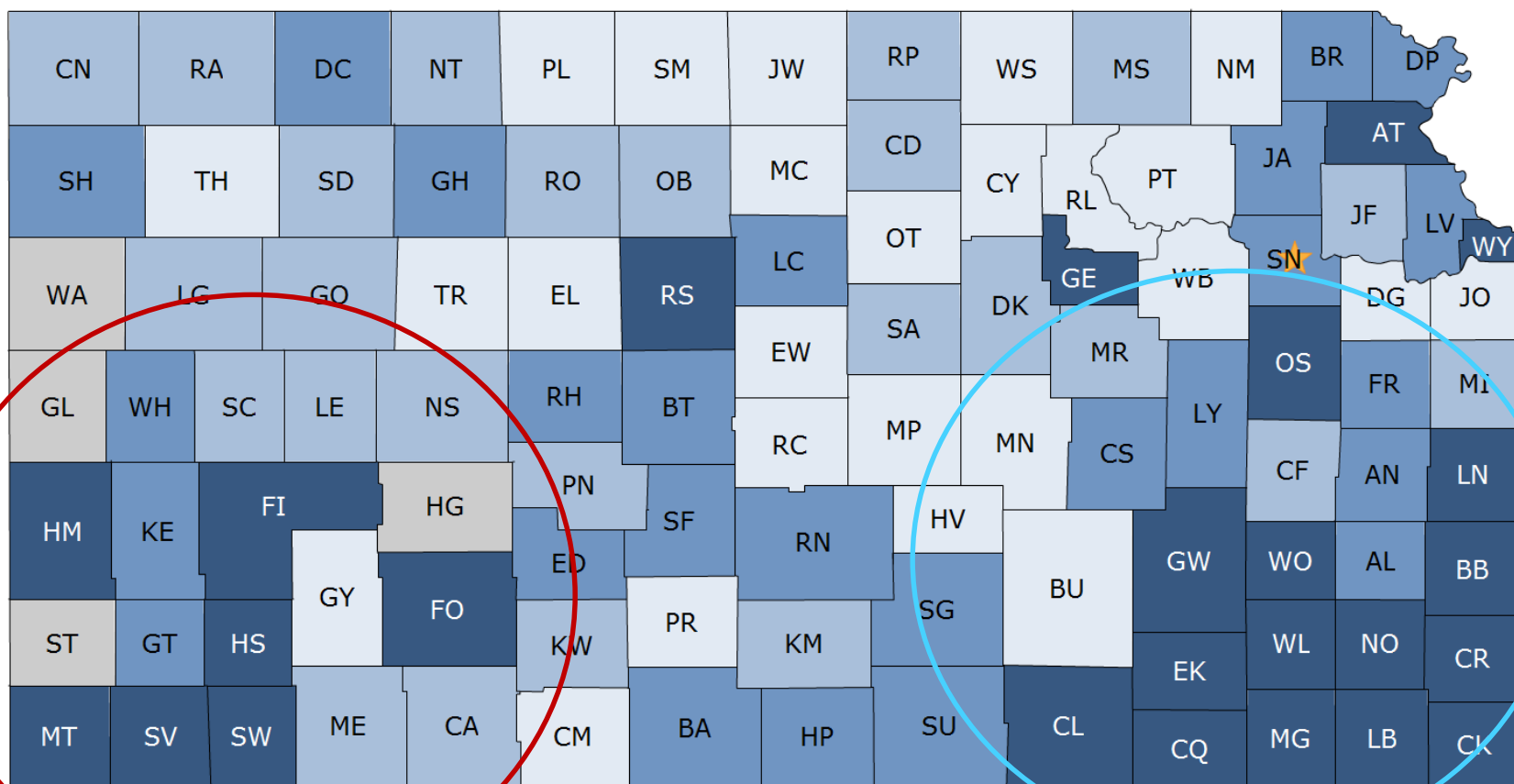


- Factors include health behaviors, access to and quality of care, socio-economic indicators, and aspects of the physical environment.
- Outcomes include length and quality of life.



# Kansas Health Factors

## 2015 Health Factors - Kansas



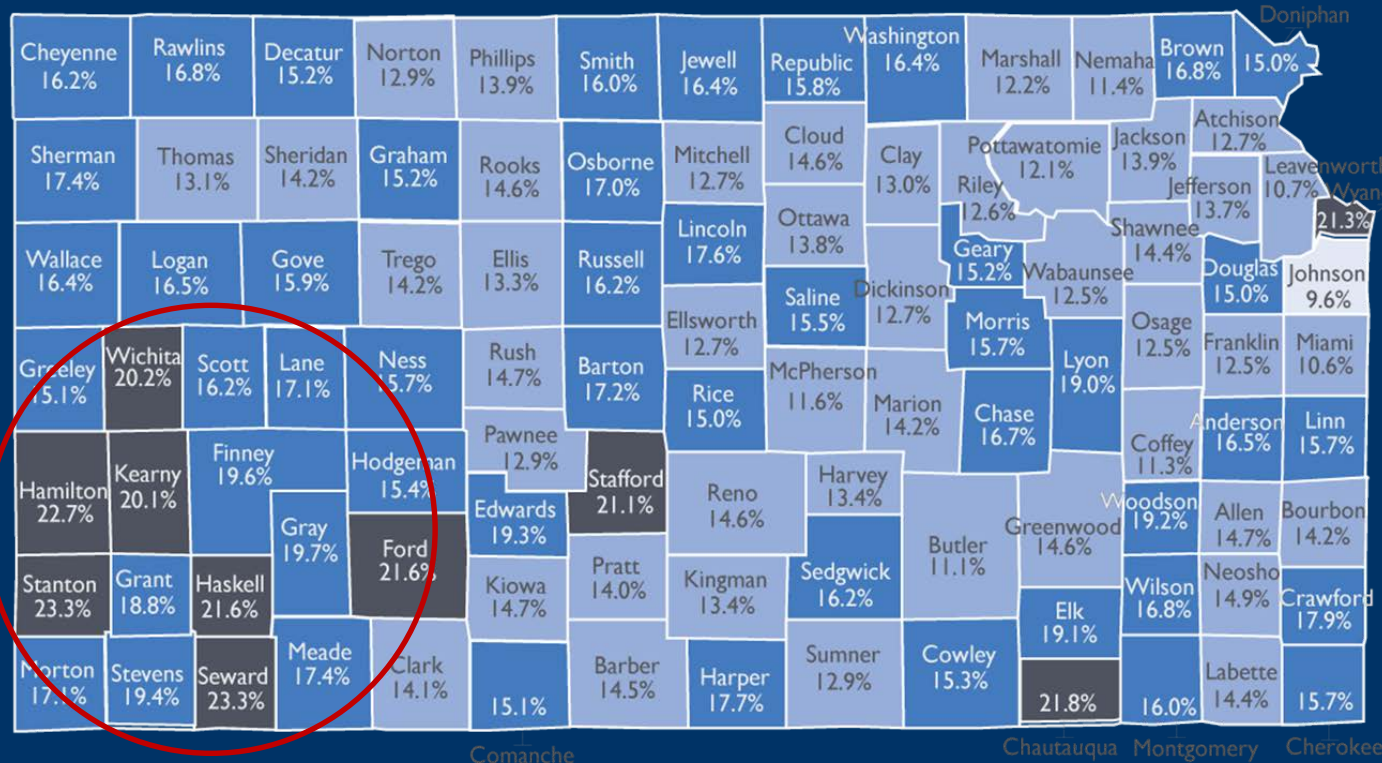
Rank 1-25   Rank 26-50   Rank 51-76   Rank 77-101   Not Ranked





# How does health policy impact disparities?

Kansans, Age 0-64: Percent of Total Uninsured, by County, 2013



In Kansas, many areas with **high socioeconomic need** also have **relatively high uninsured rates**

Uninsured Rates:

5.0%–9.9%

10.0%–14.9%

15.0%–19.9%

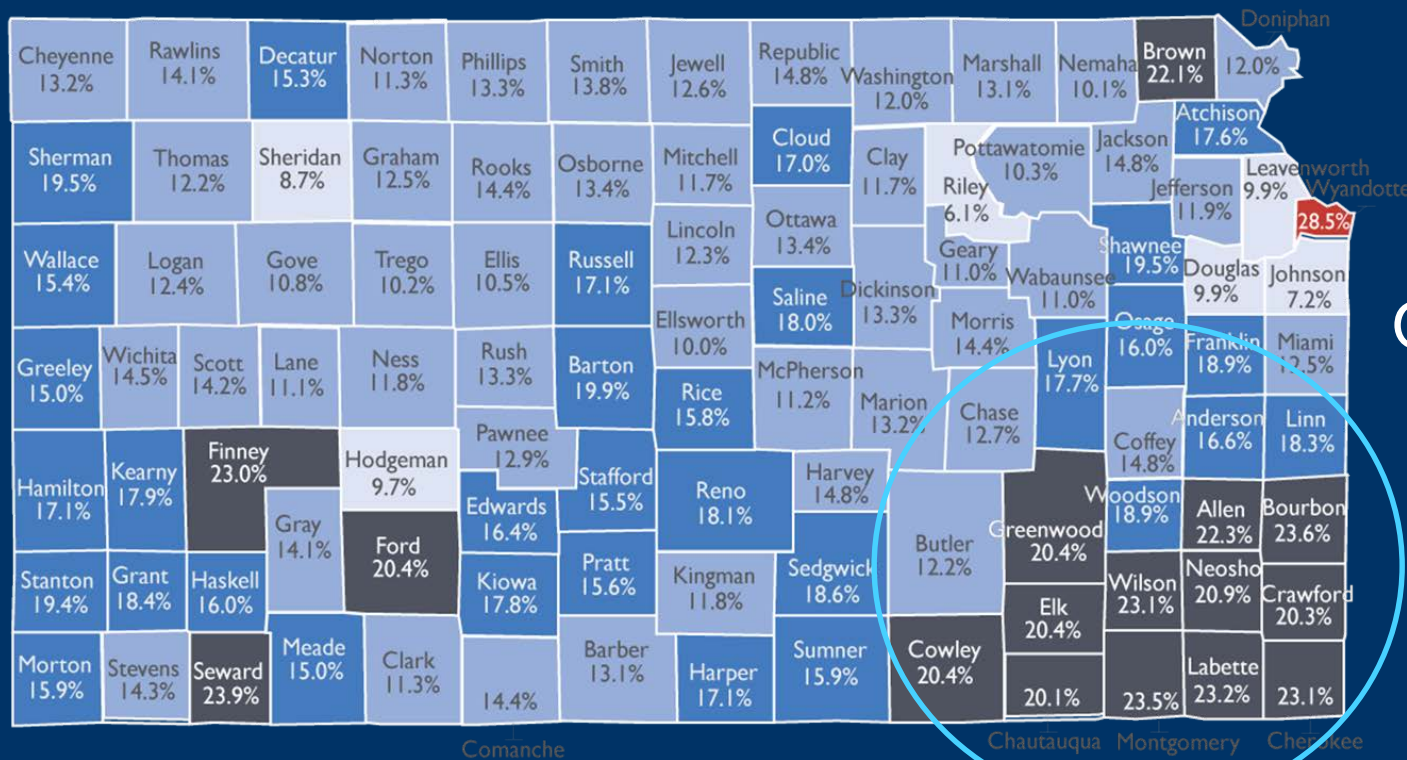
20.0%–24.9%





# How does health policy impact disparities?

Kansans, Age 0–64: Medicaid/CHIP Participation Rate by County, 2013



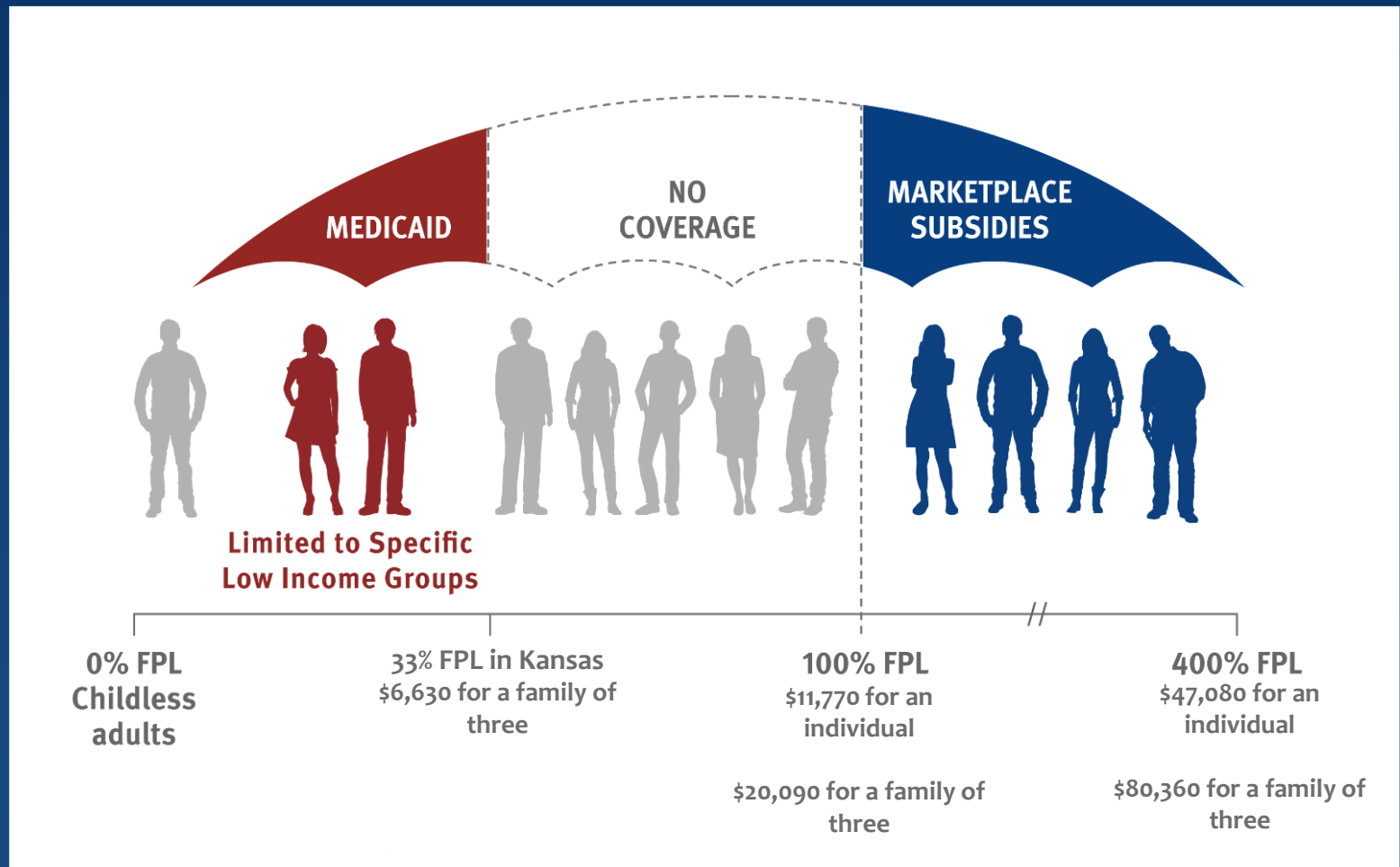
Or high rates of Medicaid Coverage already

5.0%–9.9%    10.0%–14.9%    15.0%–19.9%    20.0%–24.9%    25.0%–29.9%

Source: Kansas Health Institute (KHI) analysis of the U.S. Census Bureau's Small Area Health Insurance Estimates, 2013.



# How does health policy impact disparities?

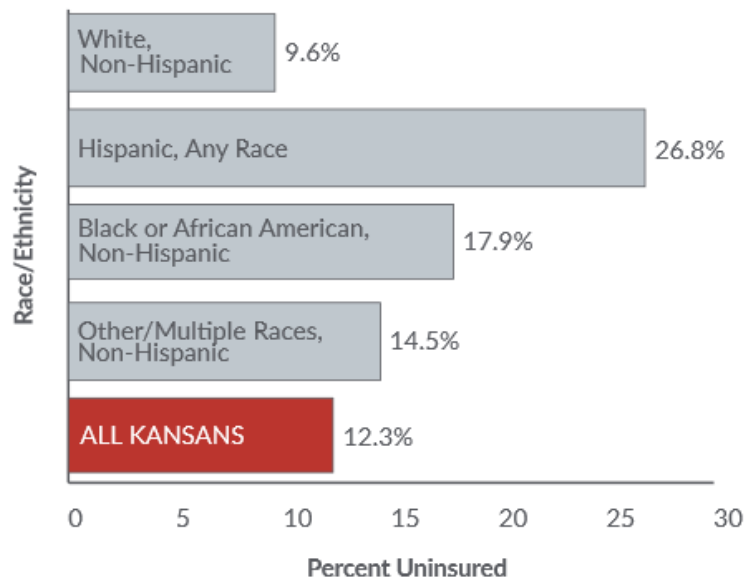


SOURCE: The Kaiser Commission on Medicaid and the Uninsured, Kaiser Family Foundation.



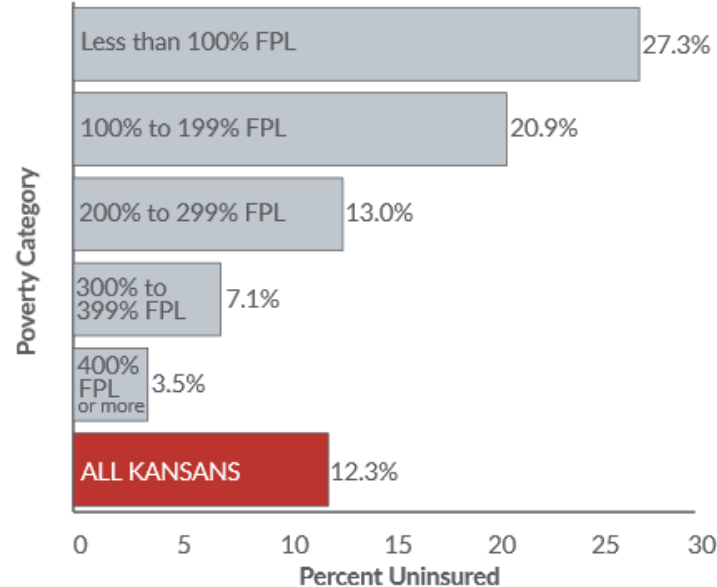
# Disparities in the Medicaid Gap

Figure 15. All Kansans: Likelihood of Being Uninsured by Race/Ethnicity, 2013



Source: KHI estimates are based on the 2013 Year American Community Survey Public Use Microdata Sample.

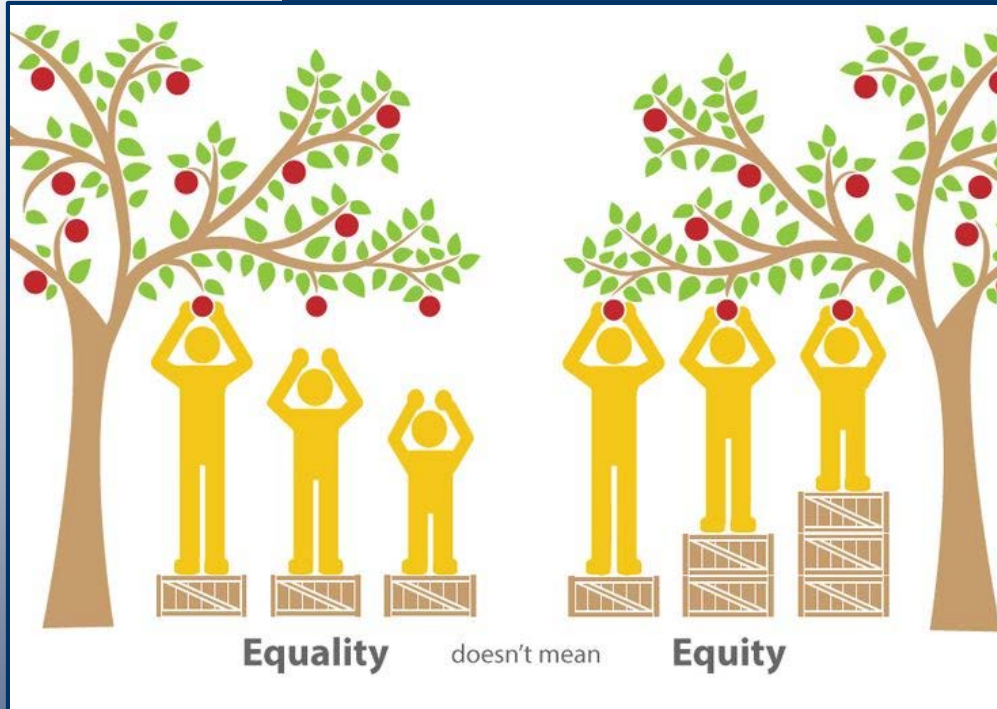
Figure 13. All Kansans: Likelihood of Being Uninsured by Poverty Category, 2013



Source: KHI estimates are based on the 2013 Year American Community Survey Public Use Microdata Sample.



# Health Equality vs. Equity



“...Achieving health equity requires valuing everyone equally with focused and ongoing societal efforts to address avoidable inequalities, historical and contemporary injustices....”  
Healthy People 2020



# Kansas Health Institute

---



*Informing Policy. Improving Health.*

KHI.org