

The Challenge of Providing Suitable and Equitable Education

	USD 512 <u>Overland Park</u>	USD 259 <u>Wichita</u>	USD 285 <u>Cedar Vale</u>	USD 395 <u>LaCrosse</u>	USD 467 <u>Leoti</u>	USD 237 <u>Smith Center</u>
Population						
09-10 FTE	26,548.0	46,226.5	144.0	294.5	427.5	433.0
00-09 % population change (county)	20.2	8.4	-14.1	-11.5	-16.7	-17.3
Taxes and local wealth						
08 Average total mill levy in city	105.183	120.237	219.122	202.064	215.024	247.431
08 Median household income	76,250	49,518	35,460	39,197	42,976	34,547
Taxable retail sales per person	132	114	43	44	72	65
County economic vitality ranking	1	14	102	105	64	98
Expenditures						
09-10 Ave. teacher salary + benefits	66,806	58,711	44,553	46,936	51,567	47,464
08-09 Expenditures per pupil	12,174	12,370	18,920	12,339	13,120	13,545
Performance and demographics						
Pupil/teacher ratio	16.1	15.6	10.7	10.9	12.2	11.4
08-09 Dropout rate (%)	1.6	2.0	0.0	0.6	1.5	0.9
08-09 % English language learners	7.9	16.0	0.0	0.0	29.5	0.4
08-09 Students with disabilities	10.1	13.0	21.1	23.1	13.9	15.6
08-09 % Economically disadvantaged	27.1	69.3	51.0	48.1	49.2	40.1
08-09 % Reading AYP	90.0	70.8	87.5	91.5	89.5	96.7
08-09 % Math AYP	89.7	67.6	84.6	83.4	82.9	90.5

All data from Kansas Department of Education unless noted below:

County population change: Institute for Policy and Social Research, University of Kansas

Average total mill levy in city: League of Kansas Municipalities

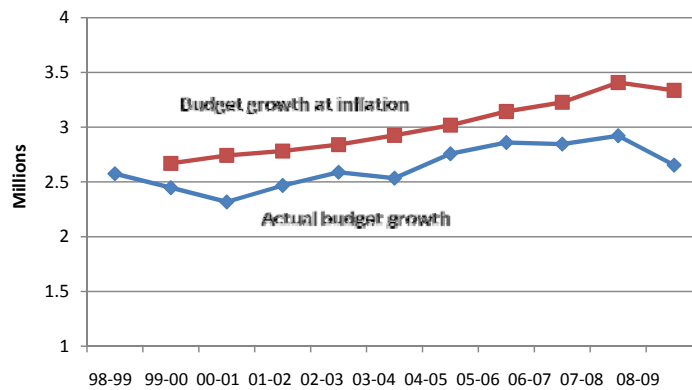
Median household income: Economic Research Service, USDA

Taxable retail sales per person: Office of Local Government, K-State Research and Extension

County economic vitality ranking: Kansas, Inc.

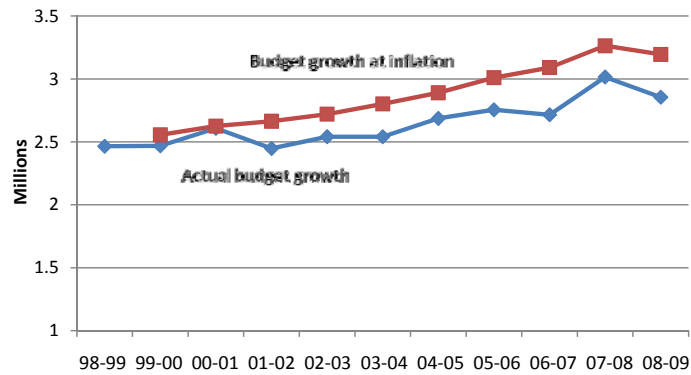
Otis-Bison USD 403						
				Total		
		Inflation	Total	Budget	Special	Budget
Year	FTE	Rate	Budget	at Inflation	Education	per FTE
1998-1999	335.5	2.14	2,575,160		97,969	7,676
1999-2000	302	3.66	2,447,308	2,669,411	127,527	8,104
2000-2001	288	2.72	2,317,670	2,742,019	122,397	8,047
2001-2002	277.5	1.46	2,467,662	2,782,052	109,337	8,892
2002-2003	253.5	2.11	2,588,495	2,840,754	297,399	10,211
2003-2004	229.5	2.99	2,534,450	2,925,692	261,618	11,043
2004-2005	218	3.17	2,757,424	3,018,437	265,631	12,649
2005-2006	218.3	4.15	2,860,068	3,143,702	302,197	13,102
2006-2007	206.4	2.66	2,845,431	3,227,324	313,854	13,786
2007-2008	185	5.6	2,921,756	3,408,054	361,034	15,793
2008-2009	171.3	-2.1	2,653,800	3,336,485	345,052	15,492

Otis-Bison USD 403 Budget Growth 1998-2009



Sharon Springs USD 241						
				Total		
		Inflation	Total	Budget	Special	Budget
Year	FTE	Rate	Budget	at Inflation	Education	per FTE
1998-1999	306	2.14	2,465,805		58,694	8,058
1999-2000	282.5	3.66	2,468,838	2,556,053	67,034	8,739
2000-2001	273	2.72	2,608,127	2,625,578	58,070	9,554
2001-2002	247.1	1.46	2,447,850	2,663,912	50,338	9,906
2002-2003	246.3	2.11	2,541,287	2,720,120	150,009	10,318
2003-2004	227.2	2.99	2,540,979	2,801,452	159,400	11,184
2004-2005	223.8	3.17	2,686,809	2,890,258	201,596	12,005
2005-2006	207	4.15	2,755,220	3,010,203	210,687	13,310
2006-2007	200.5	2.66	2,715,385	3,090,275	230,692	13,543
2007-2008	212.5	5.6	3,015,329	3,263,330	268,309	14,190
2008-2009	193.5	-2.1	2,854,871	3,194,800	209,644	14,754

Sharon Springs USD 241 Budget Growth 1998-2009



2010 - 2011 Additional Revenue Needed to Fund Current School Finance Law

Raise Base State Aid per Pupil from \$4012 to \$4492	\$314,400,000
Fund Supplemental General State Aid at 100% (currently 92%)	37,787,001
Fund Special Education at 92% of excess cost (currently 86.2%)	25,000,000
Mentor Teacher Program	2,050,000
Professional Development	8,500,000
Capital Outlay State Aid	26,000,000
School Lunch, 6 cents per meal from state (currently 4 cents)	1,043,647
National Board Certification	<u>350,000</u>
TOTAL	\$415,130,648

Where Will the Money Come From?

1. K-12 education equals 55.2% of State General Fund Expenditures in the FY 2011 Budget. To fund the extra \$415 million for K-12 within existing state general fund resources would require a 16.5 % reduction in SGF budget for all other programs and agencies.
2. \$415 million could be raised with an additional statewide mill levy of 14.75 mills
3. \$415 million could be raised with an increasing the state sales tax from 6.3% to 7.5%
4. \$415 million could be raised by increasing individual income tax rates by 17.3%