

Kansas Economic Policy Conference

The State of the Public Education Budget

October 21, 2010

State of Kansas Total Budget
\$13.7 Billion
FY 2011
(July 1, 2010 to June 30, 2011)

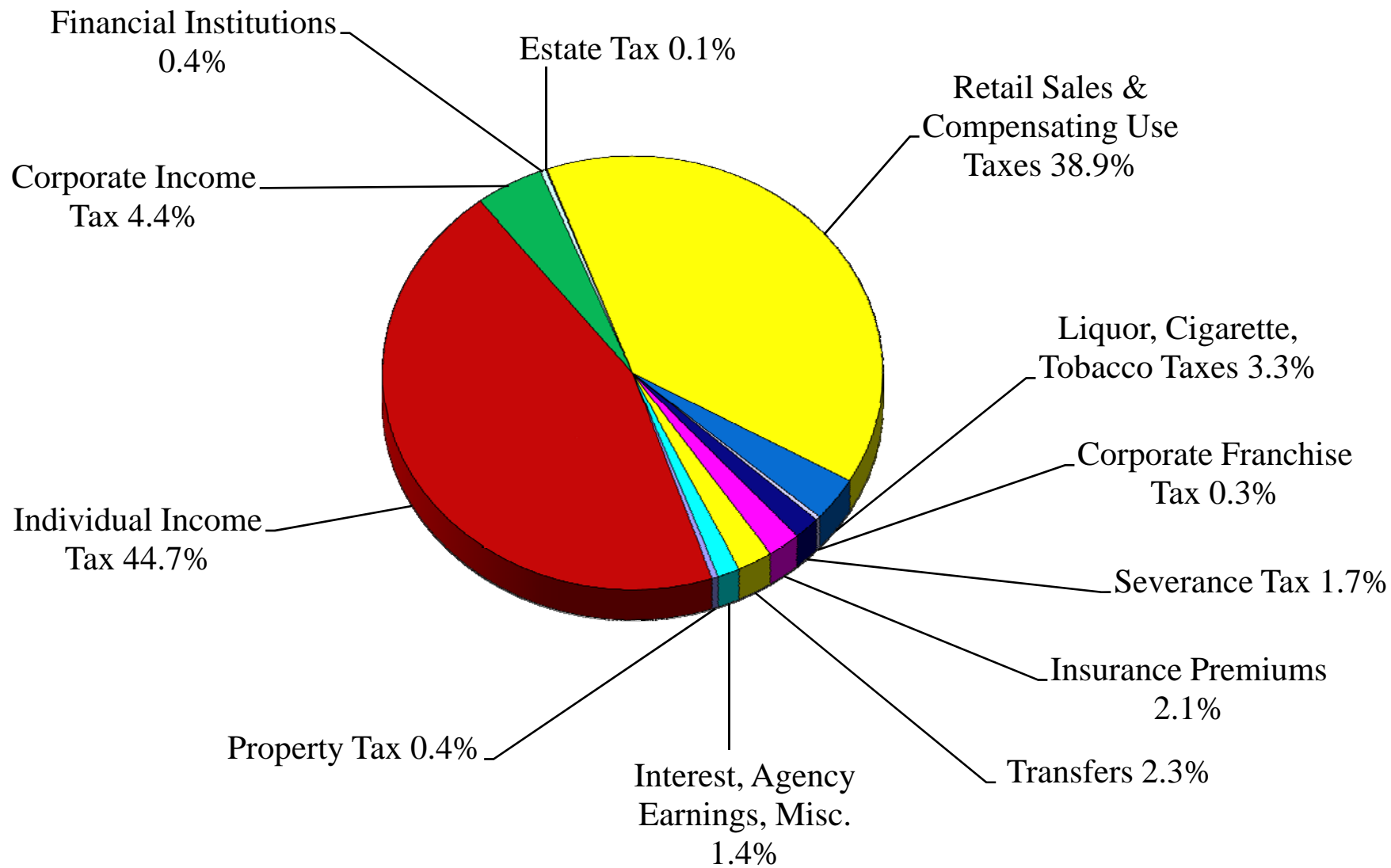
State General Fund

Highway Fund
Economic Development Initiatives Fund
Water Plan Fund
Children's Initiatives Fund
Federal Funds
Regents Special Revenue Funds
Unemployment Fund
All Other Funds

Where State Dollars Come From

State General Fund

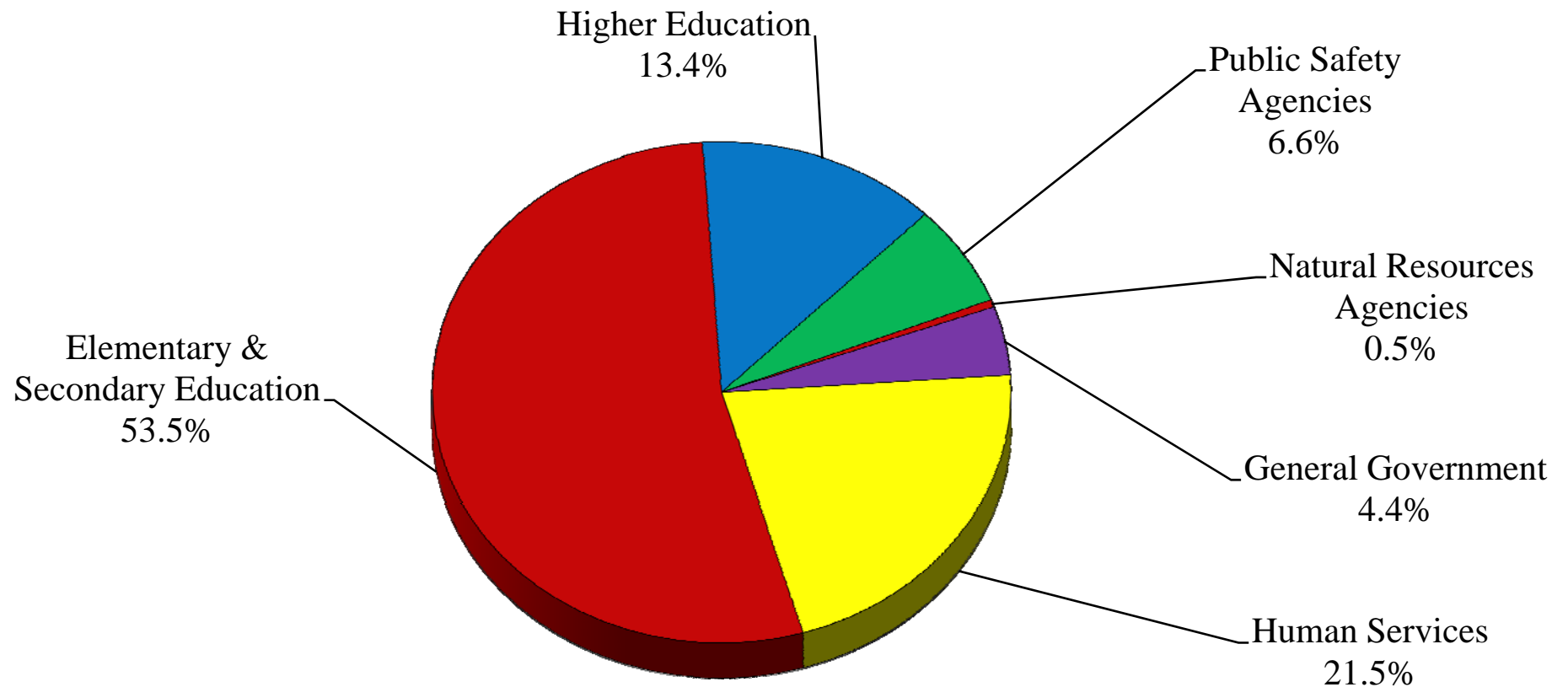
FY 2011



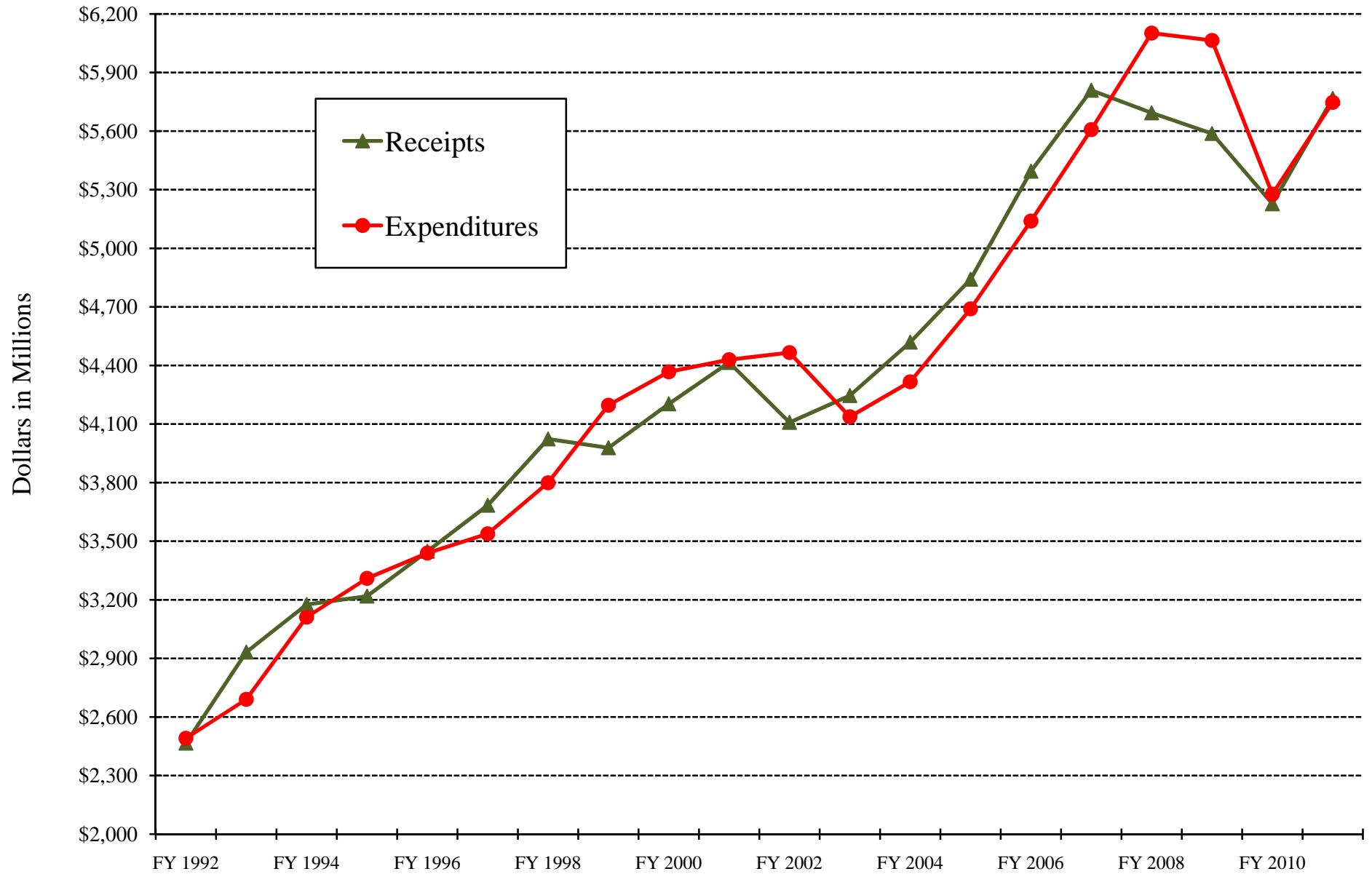
Where State Dollars Go

State General Fund

FY 2011

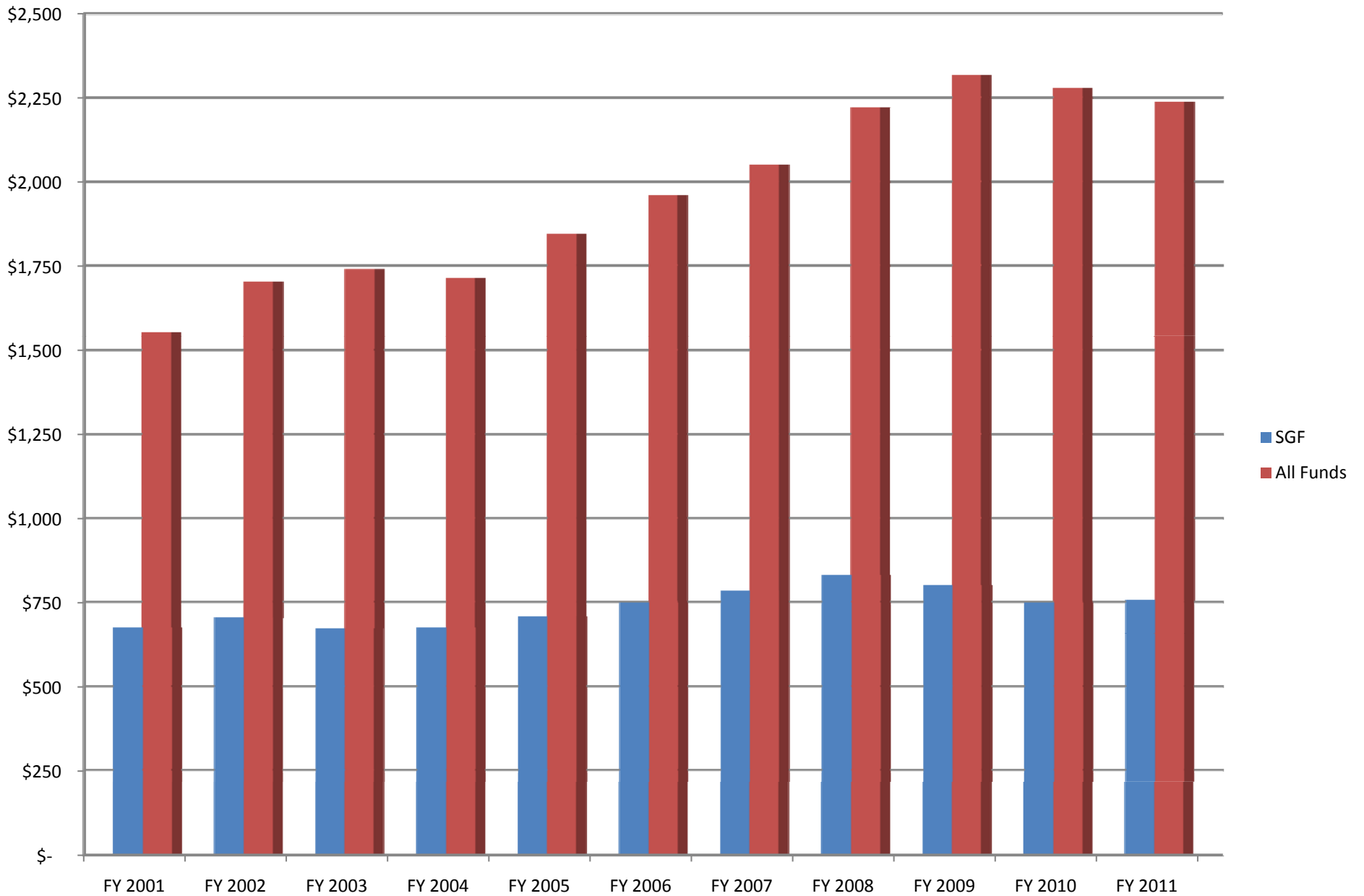


Approved Budget Adjusted for Legislative Action State General Fund Receipts and Expenditures



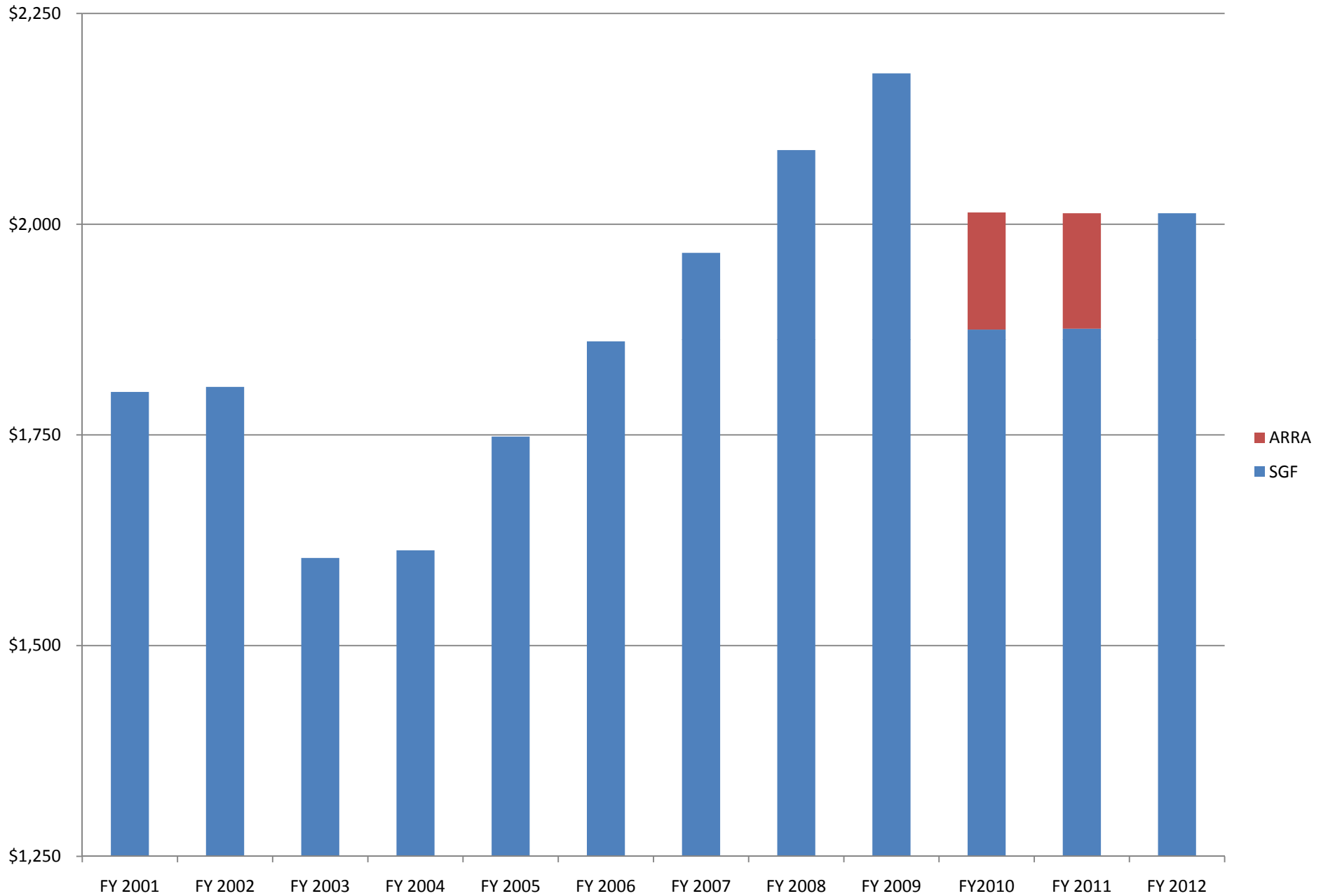
Postsecondary Education Spending

(dollars in millions)



K-12 General State Aid

(dollars in millions)



Kansas Funds

Federal Funds

40 %

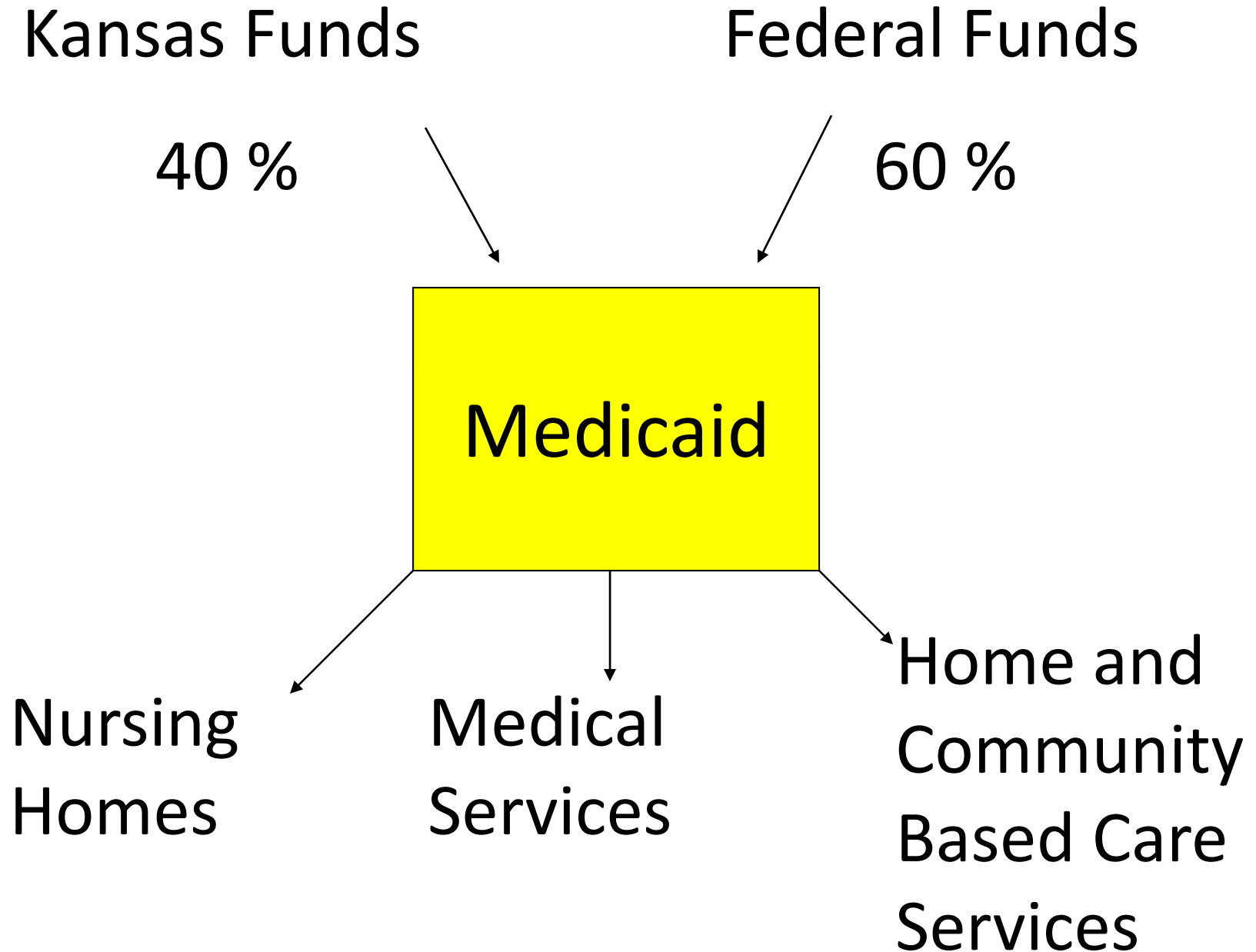
60 %

Medicaid

Nursing
Homes

Medical
Services

Home and
Community
Based Care
Services



Public Education Budget Outlook

FY 2011 Outlook: Stable

FY 2012 Outlook: To maintain stability, the State General Fund budget must go up in order to replace federal recovery act funding that currently supports education and Medicaid. Both K-12 and Postsecondary Education risk significant further program reductions if federal funds are not replaced. Recovery act “maintenance of effort” requirements will no longer apply.