

Mapping the Kansas Economy— The Natural Environment

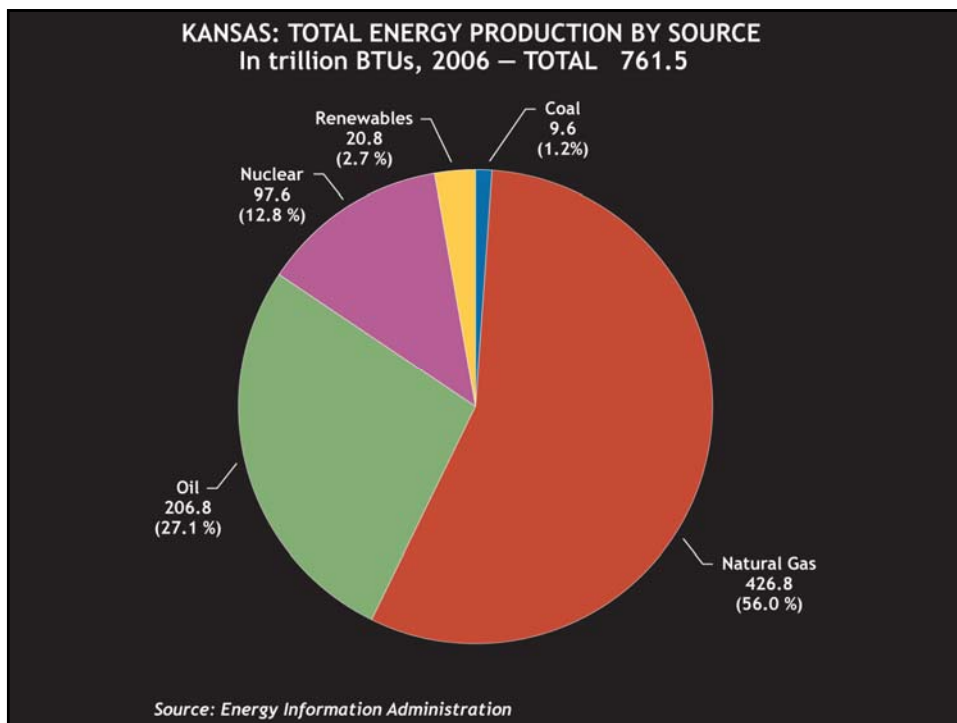
KANSAS ECONOMIC POLICY CONFERENCE
October 2009

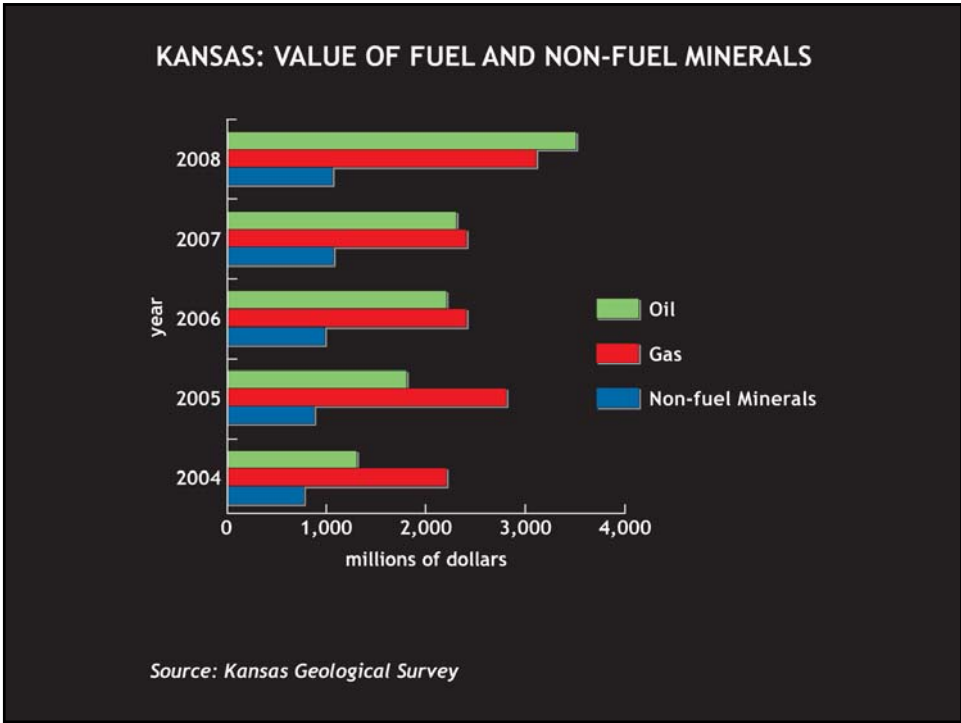
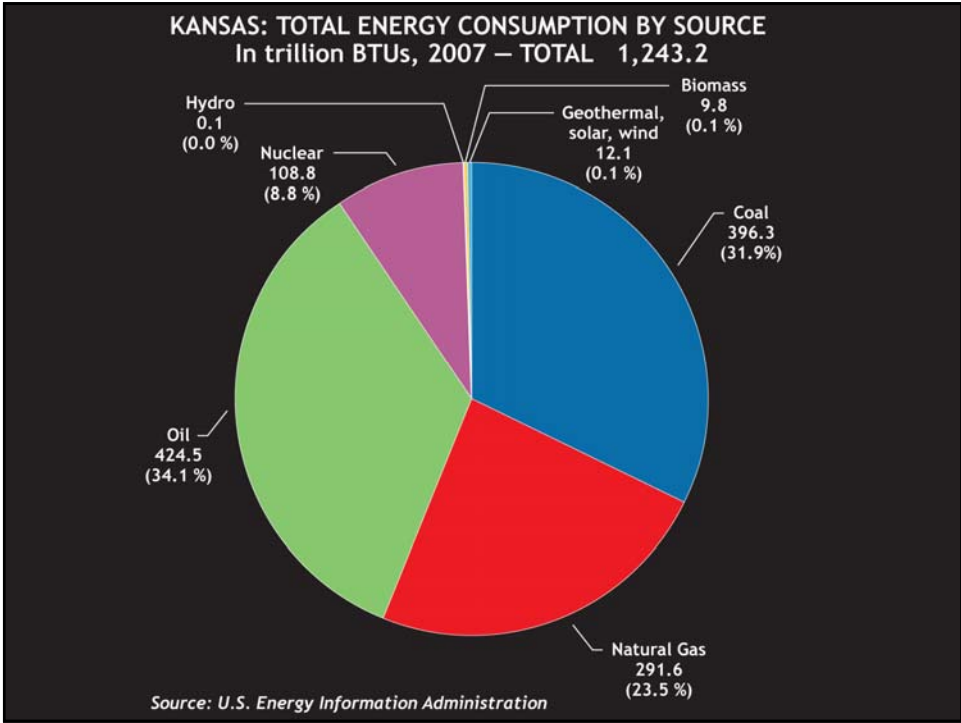
22

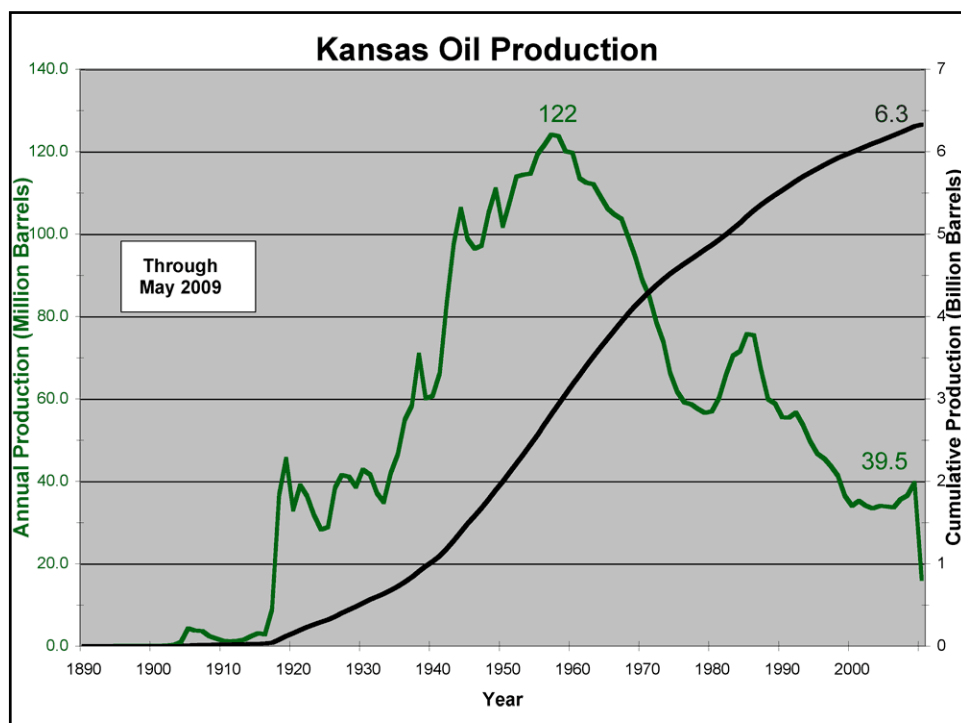
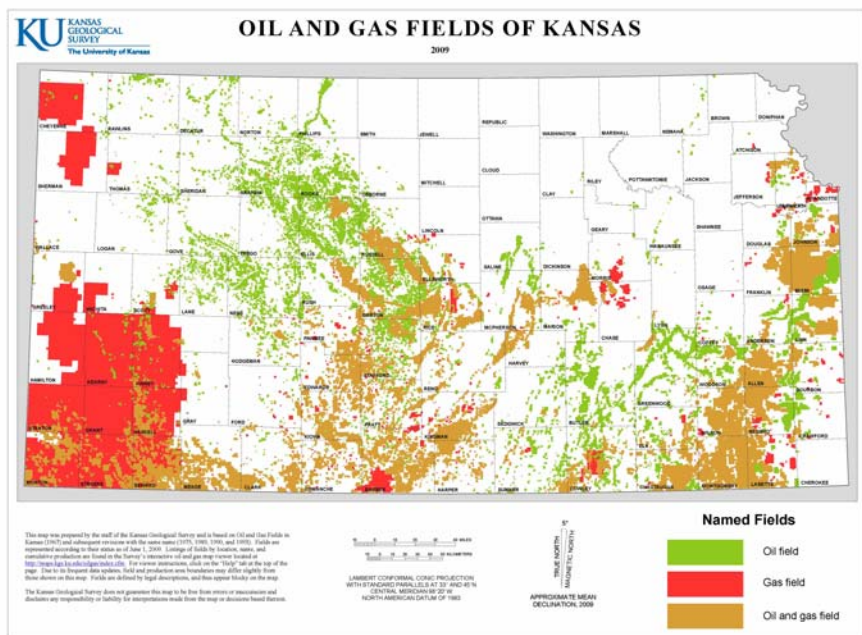
Energy Water Environment



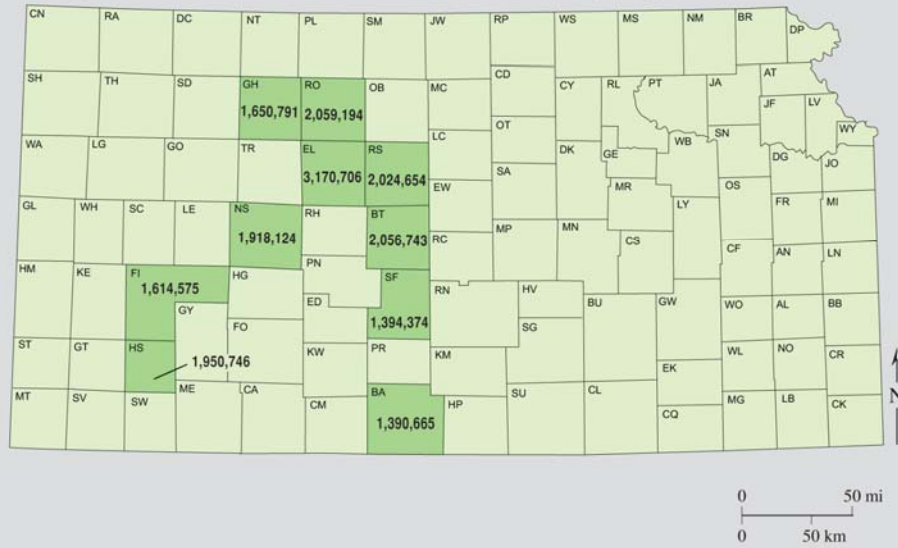
Energy



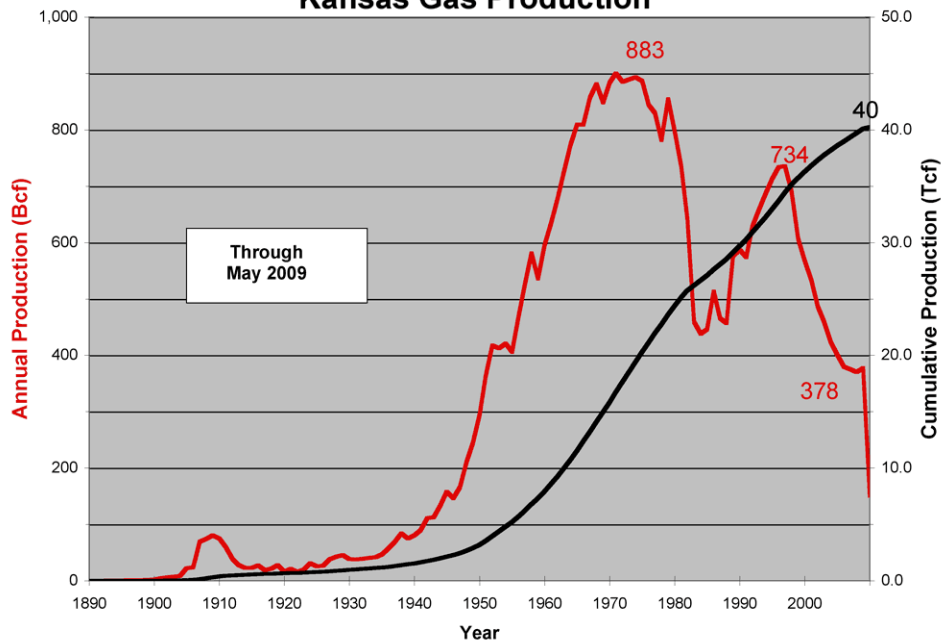




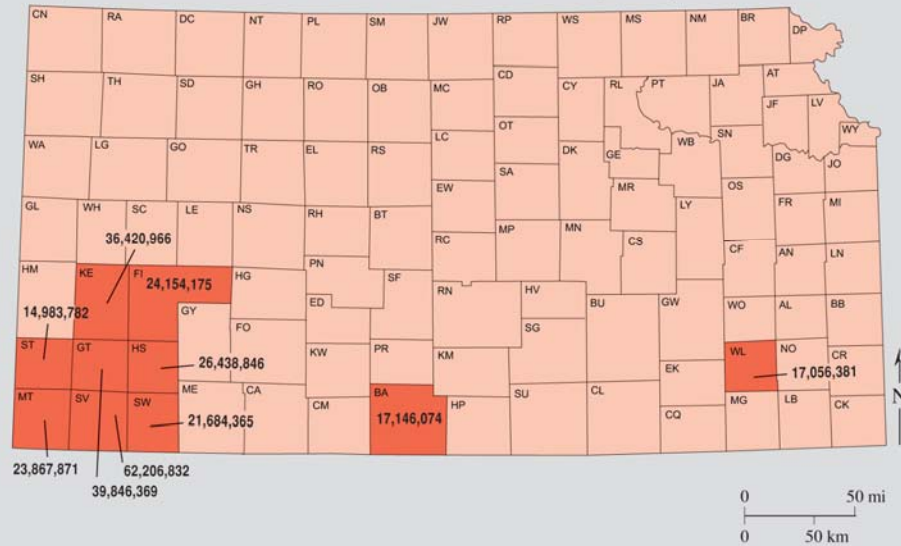
Top Ten Counties for Oil Production (bbl) in 2008



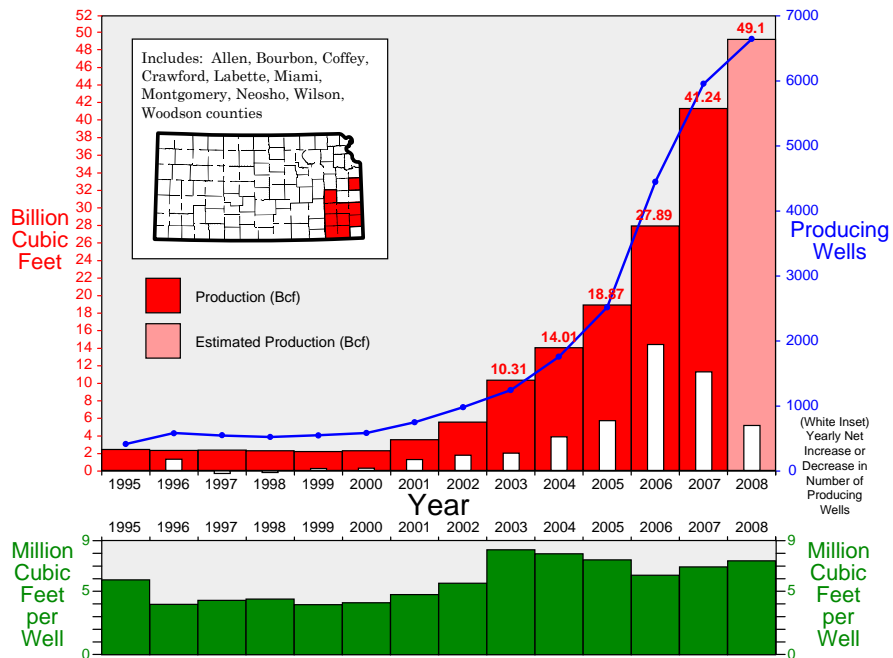
Kansas Gas Production



Top Ten Counties for Gas Production (MCF) in 2008

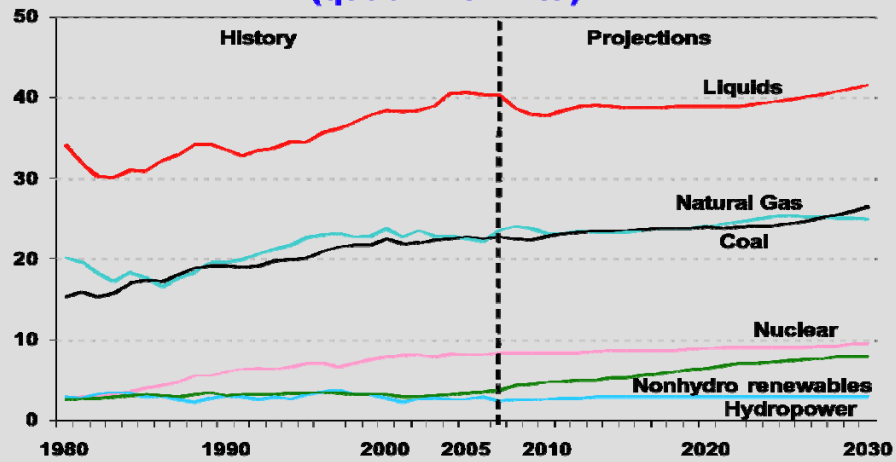


Yearly Gas Production in Southeastern Kansas



**U.S. Energy Consumption
by Fuel (1980-2030) quadrillion BTUs**

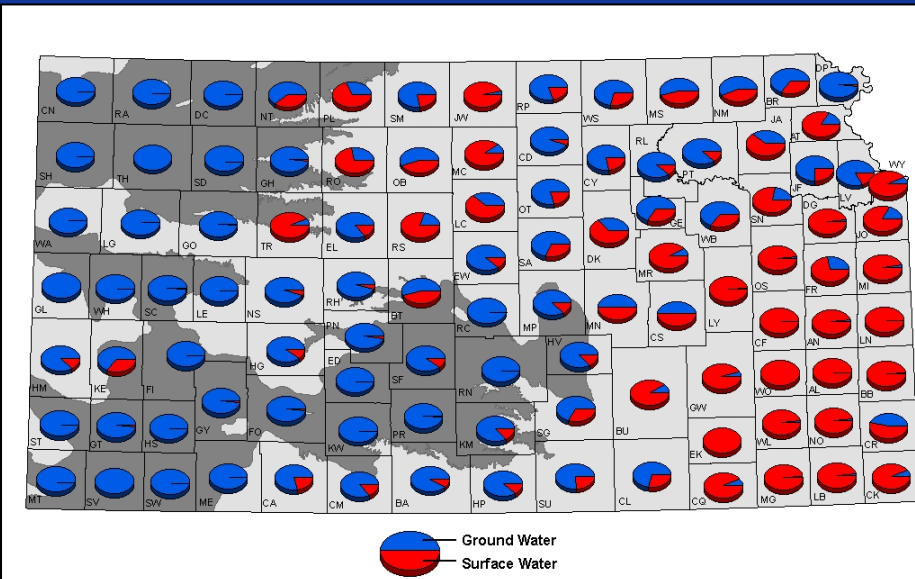
**Energy Consumption by Fuel, 1980 -2030
(quadrillion Btu)**



U.S. Energy Information Administration

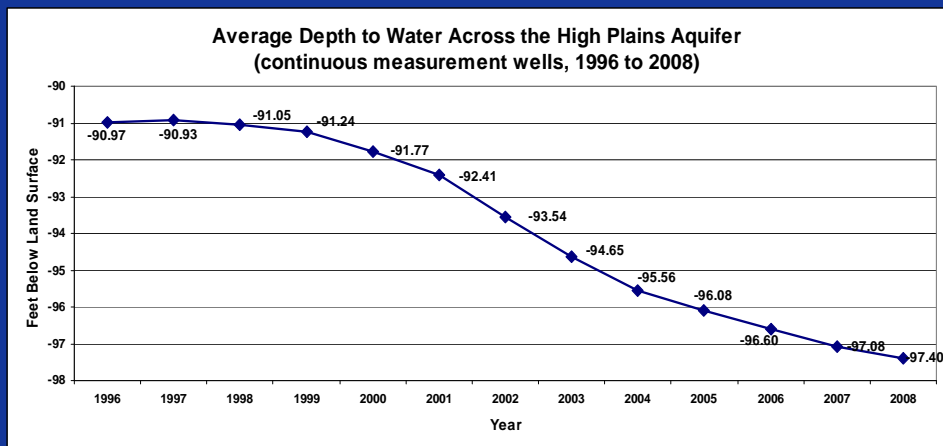
Water

Source of Water- Ground vs Surface



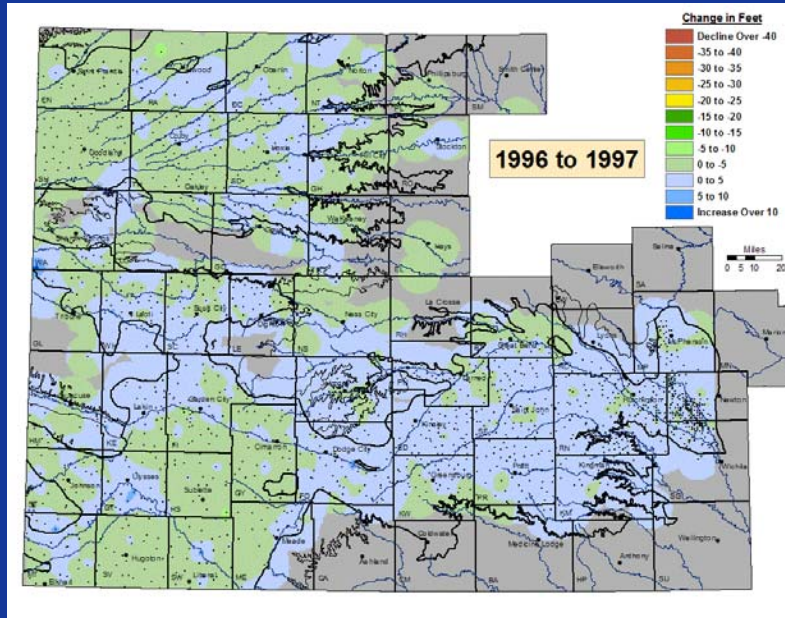
Kansas Geological Survey

Water Level Trends 1996 to 2008



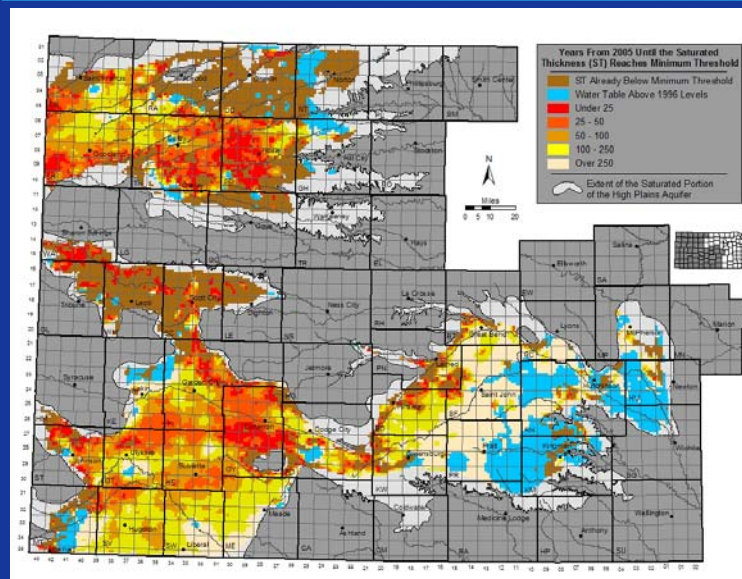
Kansas Geological Survey

Accumulated Water Level Trends 1996 to 2009



Kansas Geological Survey

Estimated Usable Lifetime: 400 gpm Varying Hydraulic Conductivity Threshold

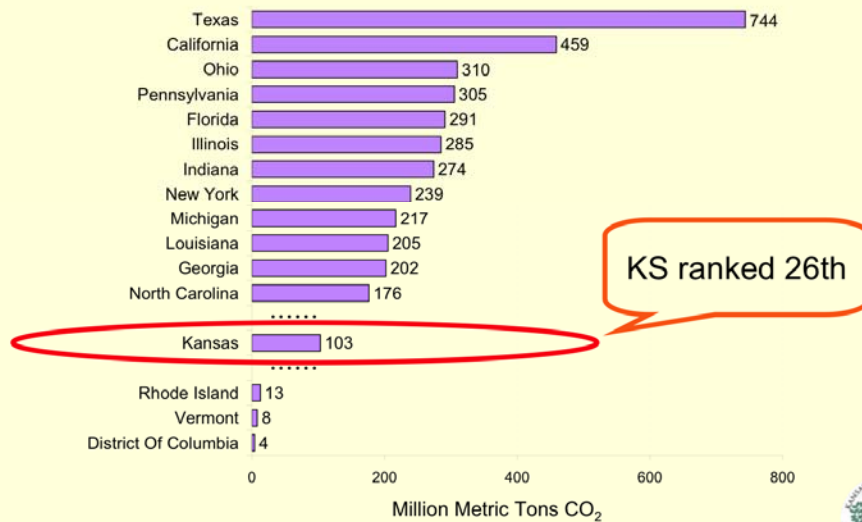


Kansas Geological Survey

Trends:
1996 to 2006

Environment

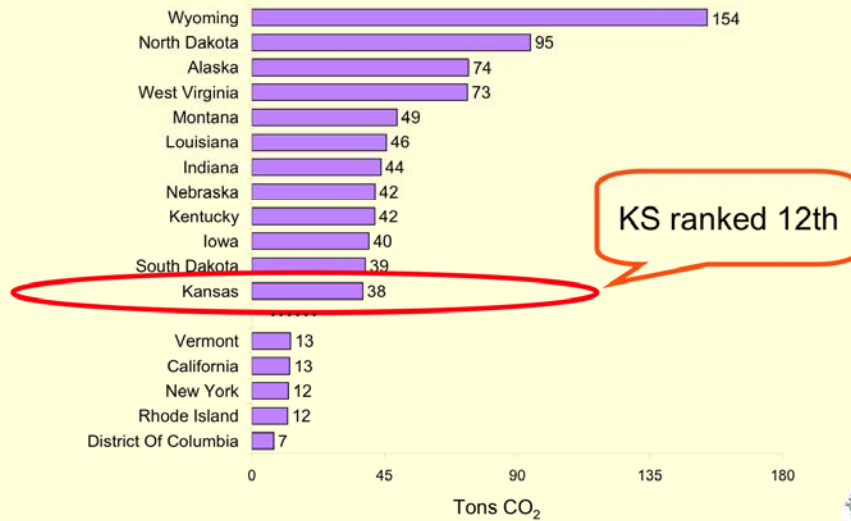
Total GHG Emissions in 2005



Climate Analysis Indicators Tool (CAIT US) Version 3.0. (Washington, DC: World Resources Institute, 2008).



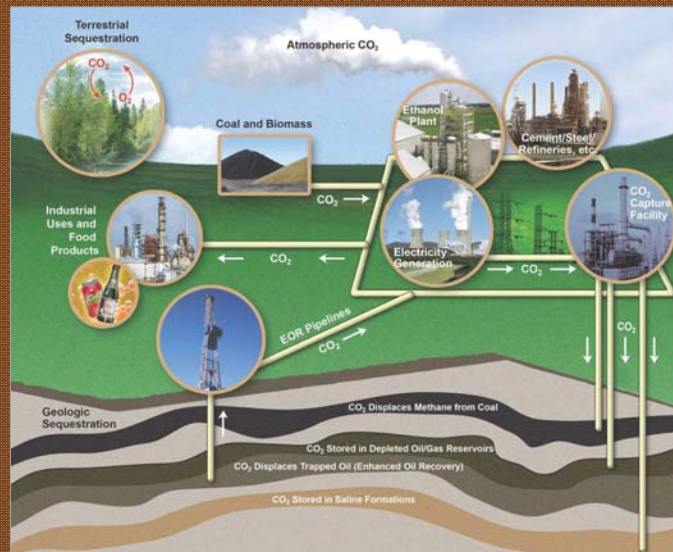
Per Capita GHG Emissions in 2005



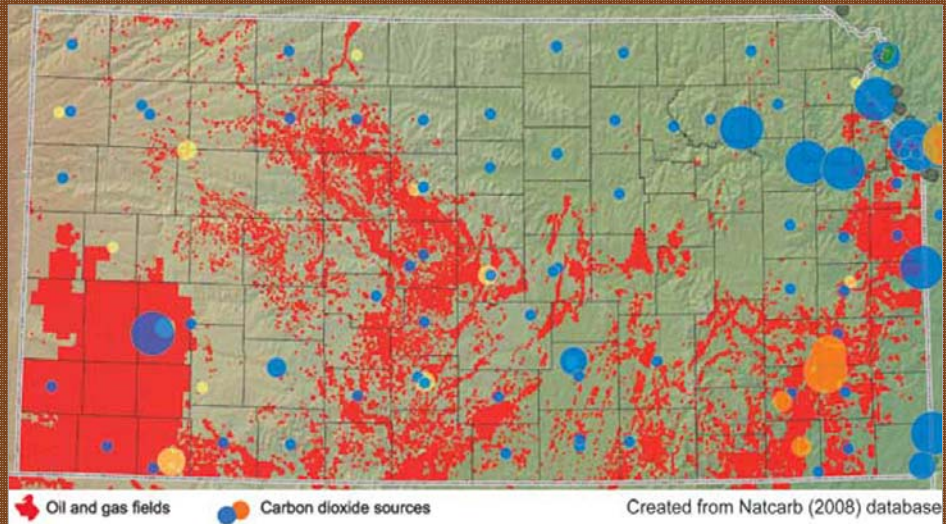
Climate Analysis Indicators Tool (CAIT US) Version 3.0. (Washington, DC: World Resources Institute, 2008).



Carbon Capture & Storage Process



CO₂ Sources & Potential Storage Sites



Kansas Geological Survey

Energy Water Environment

